

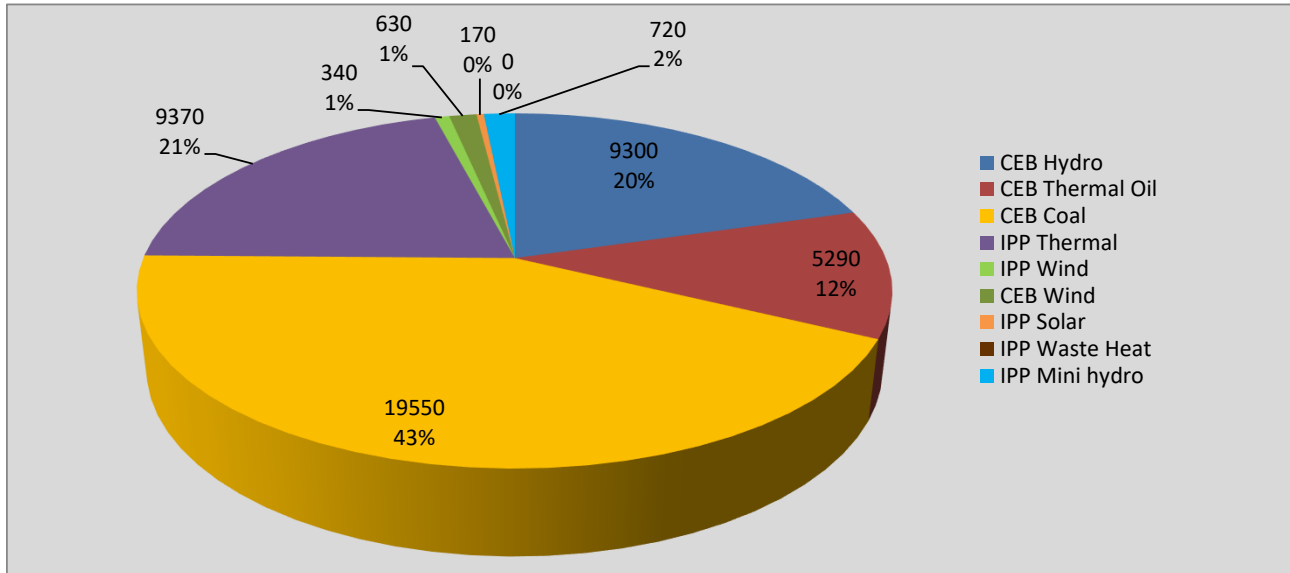
# **Generation and Reservoirs Statistics**

**February 19, 2022**



PUBLIC UTILITIES COMMISSION OF SRI LANKA

## Daily Generation Mix in MWh



**Total Generation** **45,370 MWh**

Note: Above data is excluding contribution from Roof Top Solar, 1MW Solar and certain Mini Hydro plants

## Cumulative Dispatch

Note: Following data is Excluding contribution from Roof Top Solar, 1MW solar and Mini Hydro plants

### For Current Month

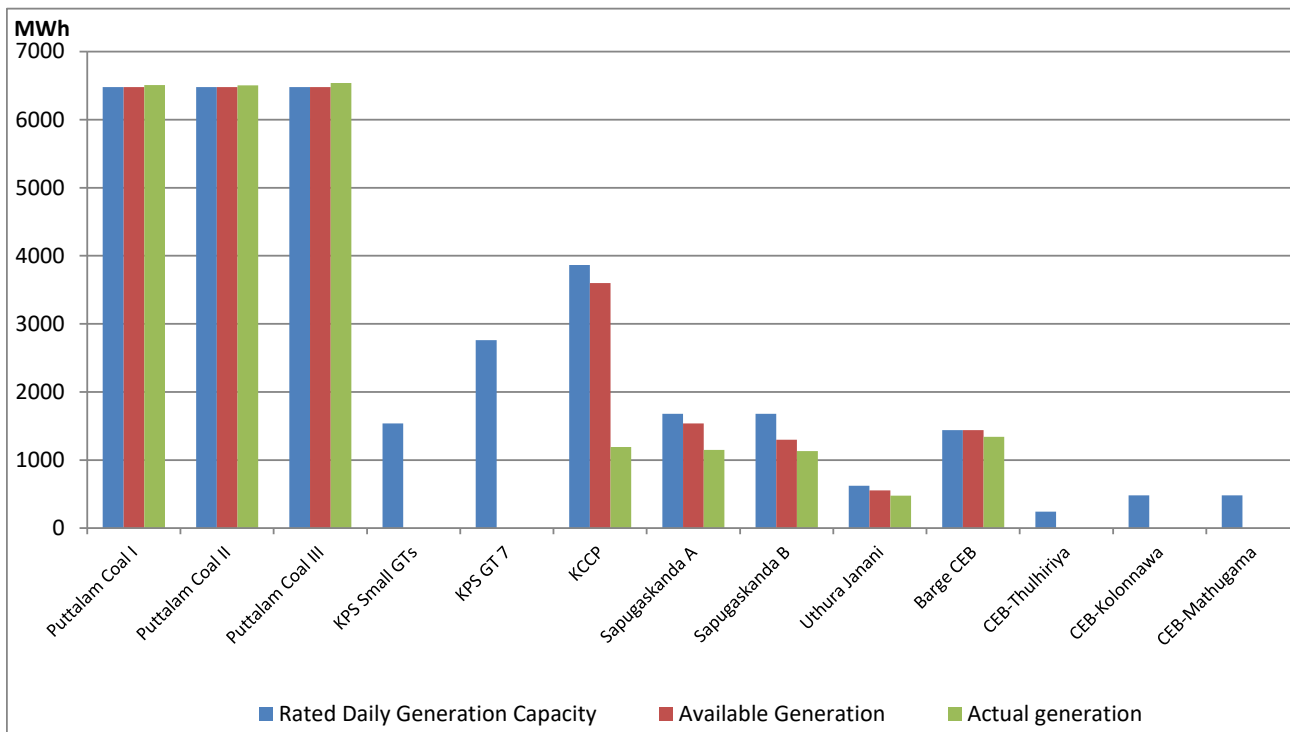
Category	Dispatch (GWh)	Percentage
CEB Hydro	191.7	22.98%
CEB Thermal Oil	115.6	13.86%
CEB Coal	361.0	43.27%
IPP Thermal	126.4	15.15%
SPP Wind	8.5	1.02%
CEB Wind	10.6	1.27%
SPP Solar	4.7	0.56%
SPP Solid Waste	1.3	0.15%
Mini Hydro	14.7	1.76%
<b>Total</b>	<b>834.2</b>	

### For Current Year

Category	Dispatch (GWh)	Percentage
CEB Hydro	599.0	27.55%
CEB Thermal Oil	359.7	16.54%
CEB Coal	768.2	35.33%
IPP Thermal	330.4	15.20%
SPP Wind	23.8	1.10%
CEB Wind	28.7	1.32%
SPP Solar	12.6	0.58%
SPP Solid Waste	9.4	0.43%
Mini Hydro	42.9	1.97%
<b>Total</b>	<b>2,174.4</b>	

## CEB owned Thermal Plant Dispatch

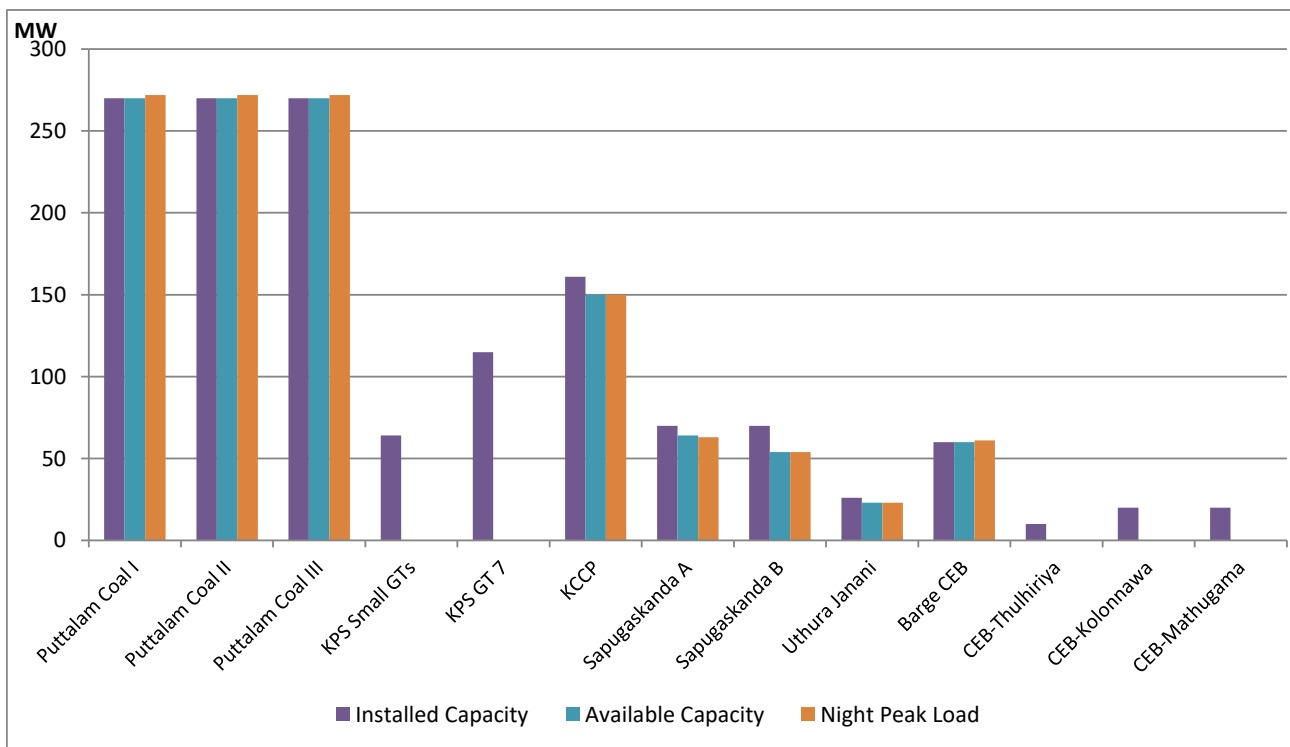
February 19, 2022



Available Generation is estimated based on plant availability at 6.00am on

February 20, 2022

## CEB owned Thermal Plant Loading at the Night Peak



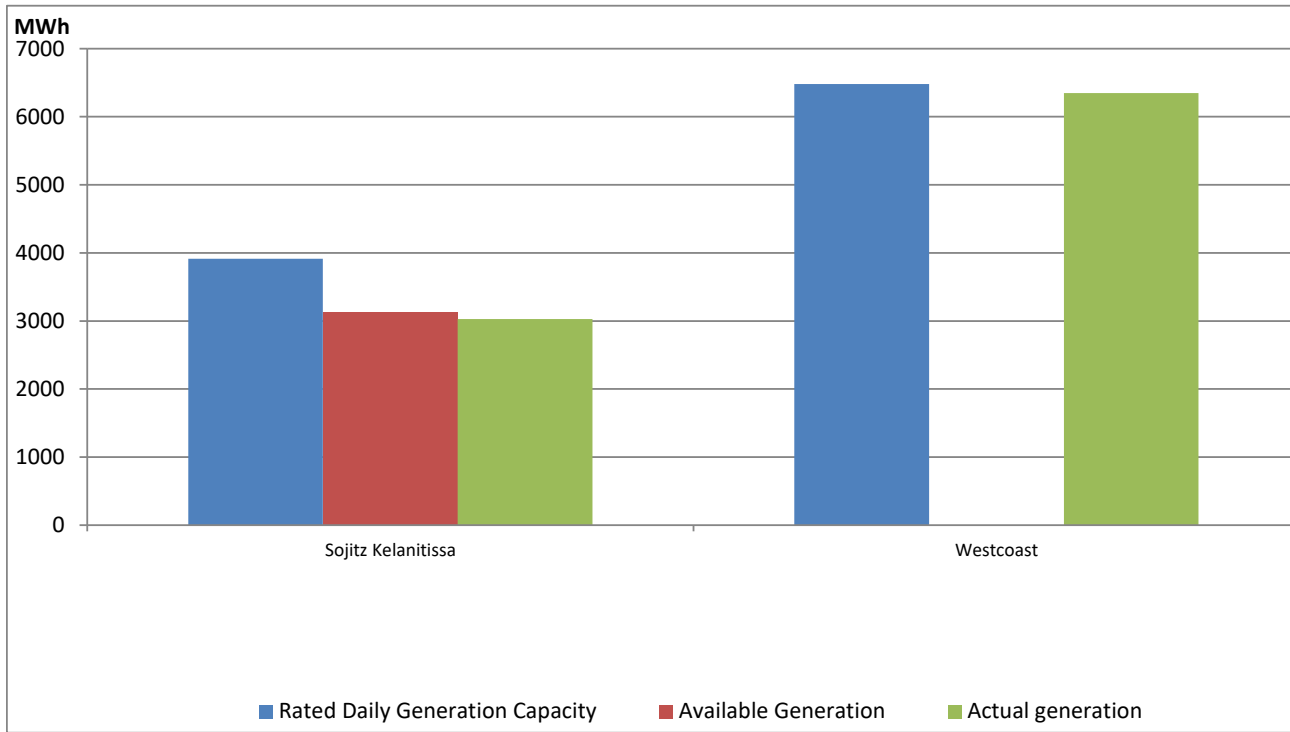
Note- Plant availability is recorded at 6.00 am on

February 20, 2022

## IPP owned Thermal Plant Dispatch

February 19, 2022

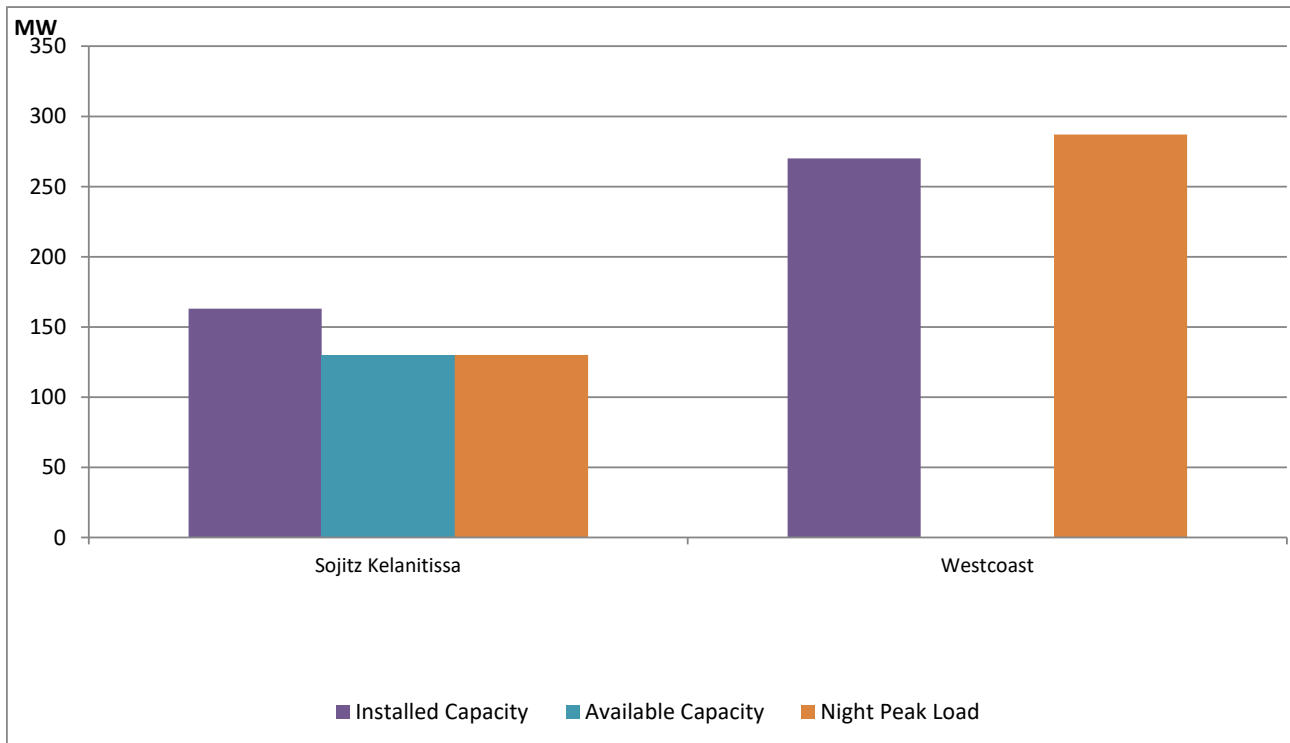
ACE Embilipitiya, ACE Matara, Asia Power, V Power Pallekale, Vpower Galle, V Power Horana, Vpower Hambantota, Vpower Valachchena and Altaqa Mahiyanganaya are not available due to expiration of PPAs



Available Generation is estimated based on plant availability at 6.00am on

February 20, 2022

## IPP owned Thermal Plant Loading at the Night Peak

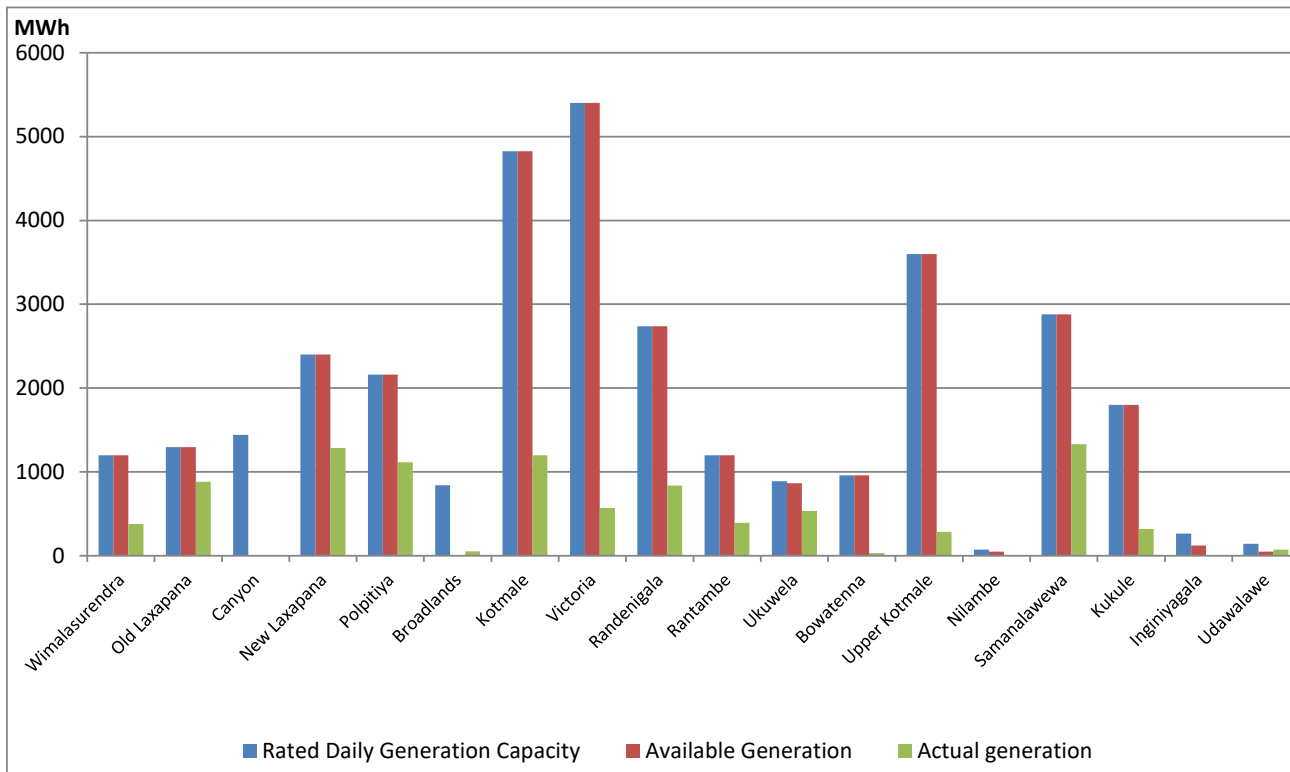


Note- Plant availability is recorded at 6.00 am on

February 20, 2022

## Major Hydro Plant Dispatch

February 19, 2022

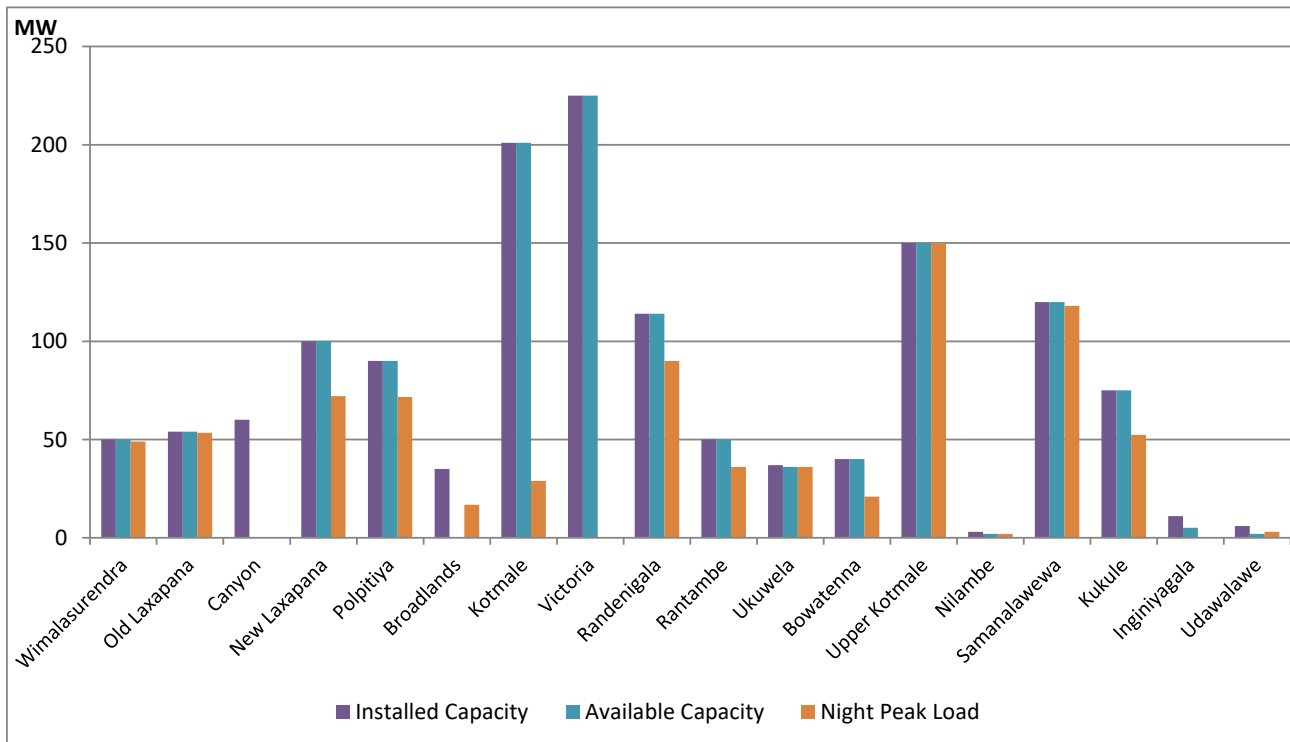


Available Generation is estimated based on plant availability at 6.00am on  
Broadlands power plant is operating in the Commissioning Stage

February 20, 2022

## Major Hydro Plant Loading at Night Peak

February 19, 2022



Note- Plant availability is recorded at 6.00 am on  
Broadlands power plant is operating in the Commissioning Stage

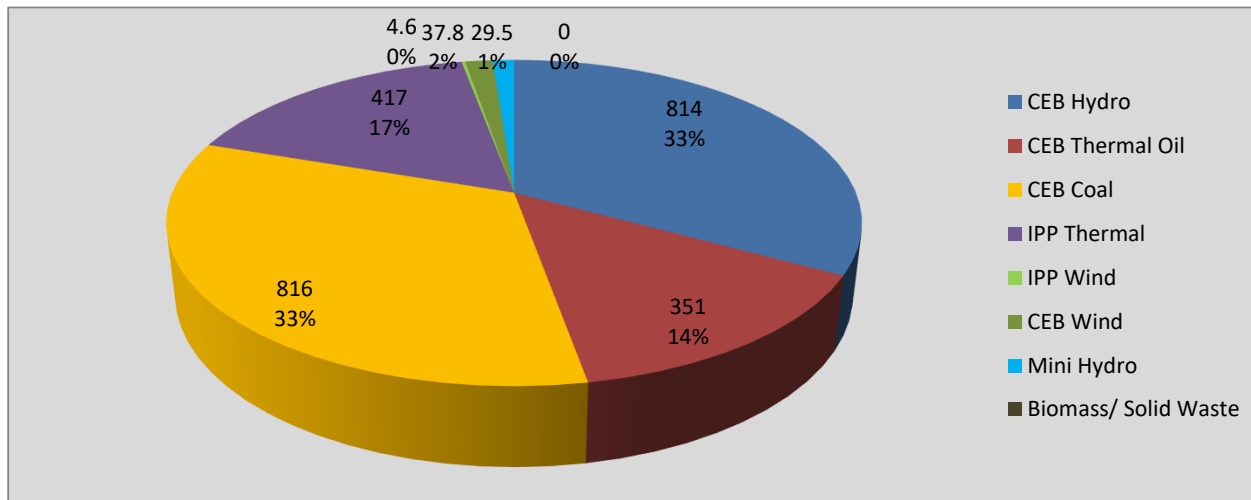
February 20, 2022

## Summary of Major Plant performance

Plant	Installed Capacity (MW)	Plant Availability (MW)	Night peak Load (MW)	Plant Dispatch (MWh)
Wimalasurendra	50	50	49	379
Old Laxapana	54	54	53	883
Canyon	60	0	0	0
New Laxapana	100	100	72	1,287
Polpitiya	90	90	72	1,115
Broadlands	35	0	17	53
Kotmale	201	201	29	1,200
Victoria	225	225	0	571
Randenigala	114	114	90	837
Rantambe	50	50	36	391
Ukuwela	37	36	36	536
Bowatenna	40	40	21	30
Upper Kotmale	150	150	150	286
Nilambe	3	2	2	5
Samanalawewa	120	120	118	1,331
Kukule	75	75	52	320
Inginiyagala	11	5	0	0
Udawalawe	6	2	3	72
Puttalam Coal I	270	270	272	6,508
Puttalam Coal II	270	270	272	6,504
Puttalam Coal III	270	270	272	6,540
KPS Small GTs	64	0	0	0
KPS GT 7	115	0	0	0
KCCP	161	150	150	1,191
Sapugaskanda A	70	64	63	1,147
Sapugaskanda B	70	54	54	1,133
Uthura Janani	26	23	23	477
Barge CEB	60	60	61	1,339
CEB-Thulhiriya	10	0	0	0
CEB-Kolonnawa	20	0	0	0
CEB-Mathugama	20	0	0	0
Sojitz Kelanitissa	163	130	130	3,026
West Coast	270	0	287	6,348
Total	3,280	2,605	2,456	45,375

Plant availability is the availability recorded at 6 am on

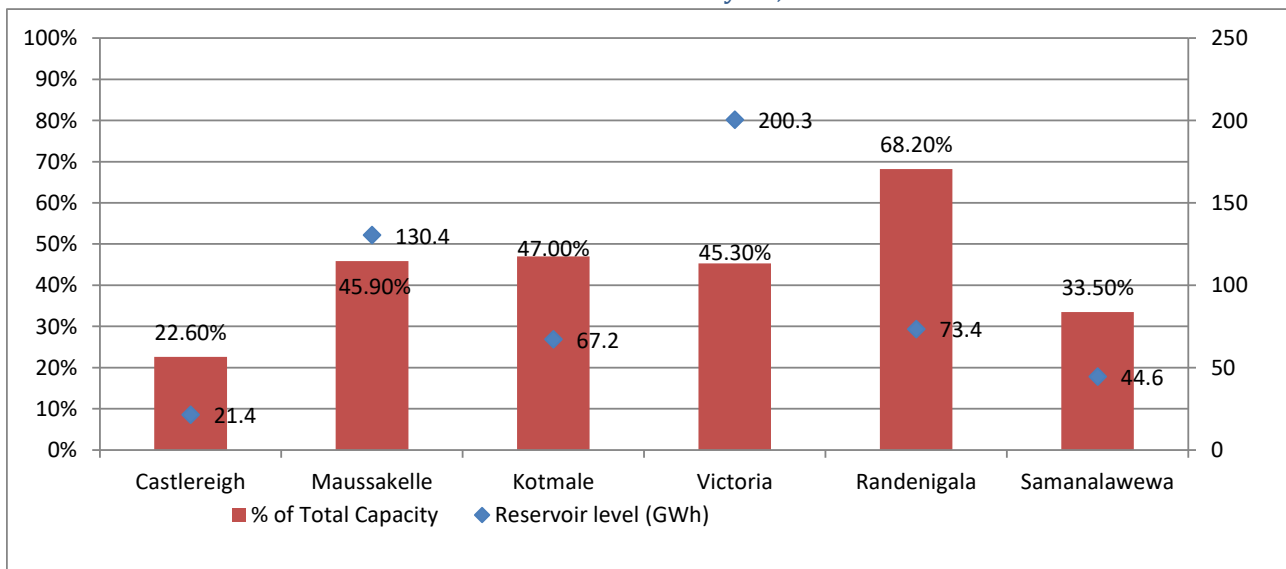
February 20, 2022



Night Peak*	2,470.1 MW
Day Peak	2,213.3 MW
Minimum Demand	1,428.0 MW

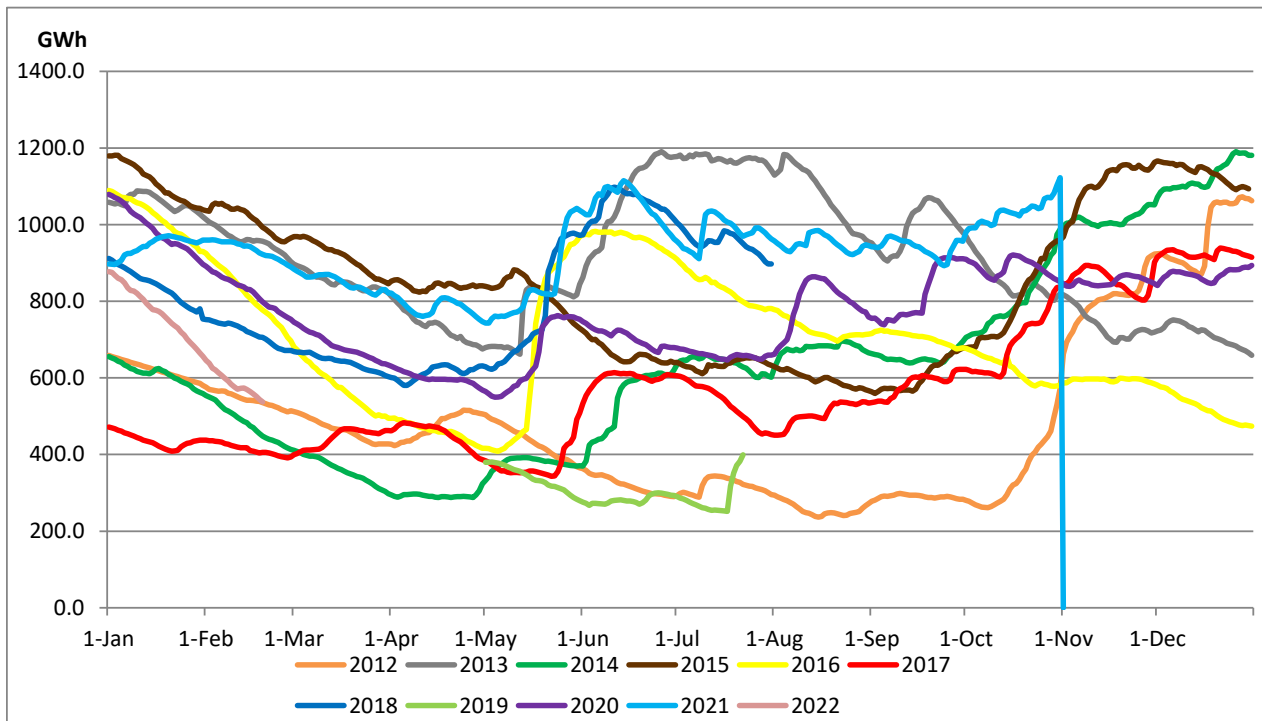
Above figures are excluding contribution from Roof Top Solar, 1MW solar, certain Wind plants and Mini Hydro plants

Reservoir Levels - as at 06.00 Hr on February 20, 2022



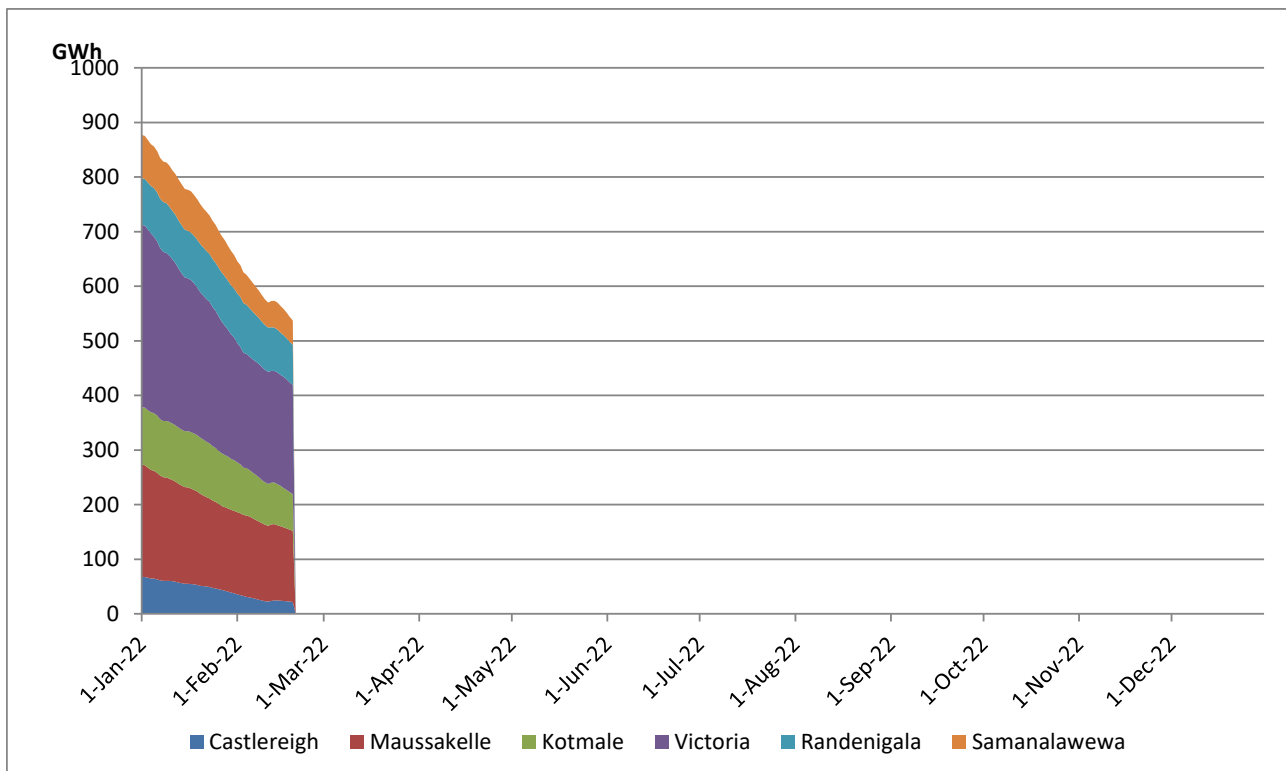
Total Reservoir Level(GWh)	537.3
% of Total capacity	43.8%

## Comparison of Total Reservoir Storage Levels with Past Years



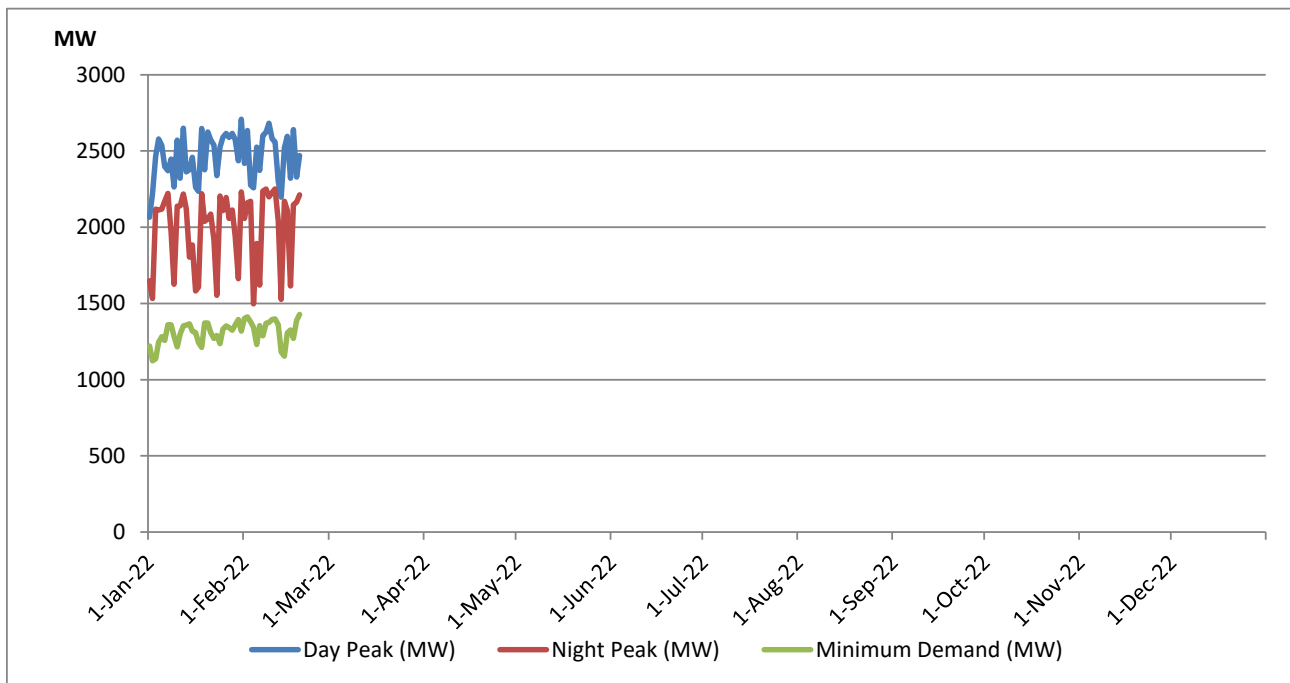
Data for 2018 and 2019 are only available for part of year.

## Variation of Major Hydro Reservoir Levels in the current year (GWh)





## Variation of Demand during the current year

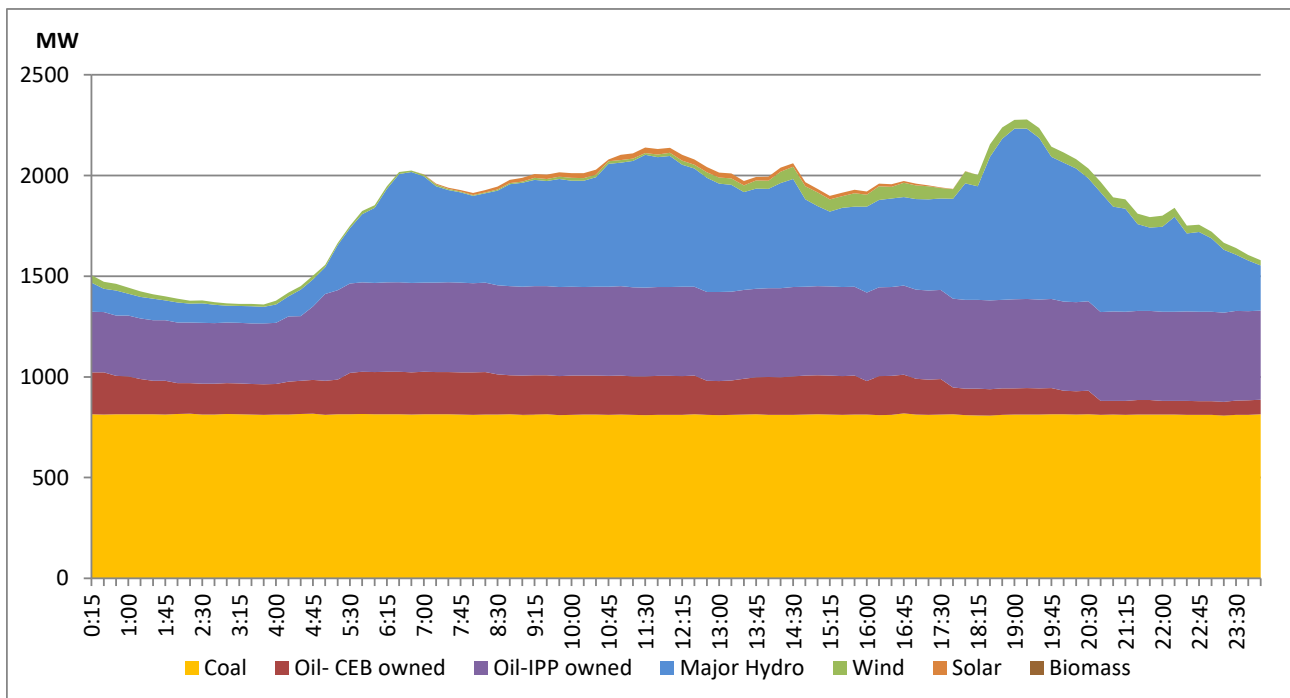


The above figures are excluding contribution from Roof Top Solar, 1MW solar, certain Wind plants and Mini Hydro plants

## Daily Load Curve of the Previous day

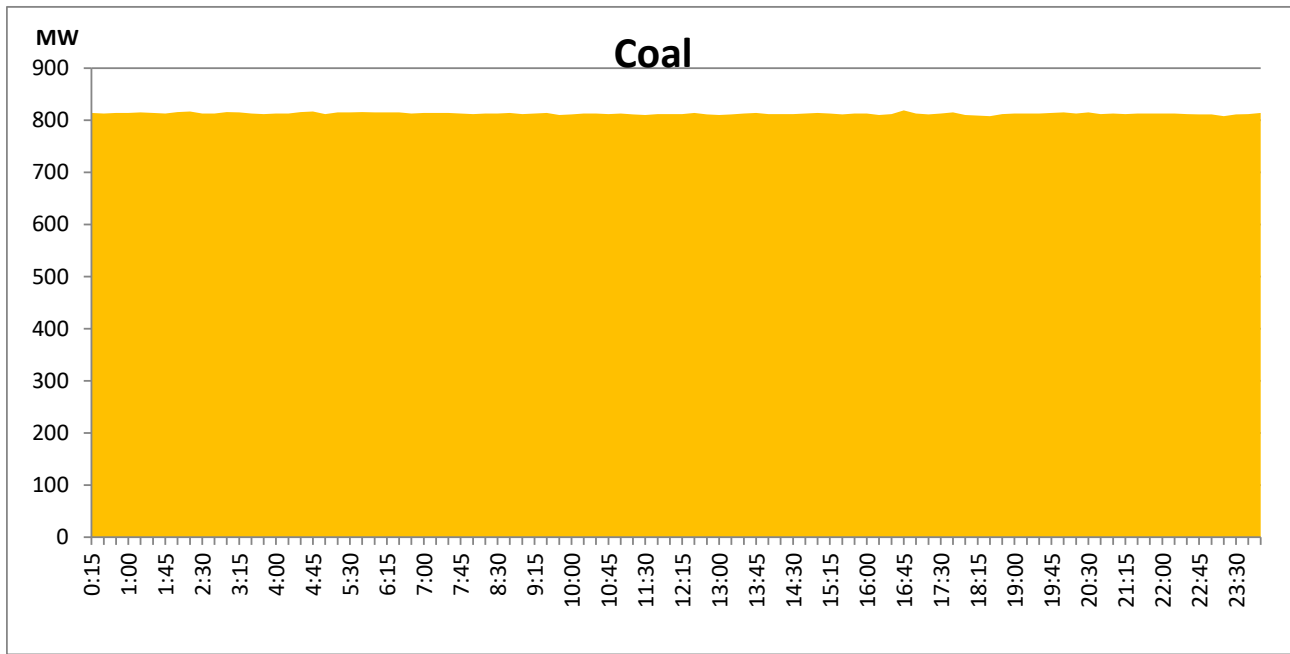
February 18, 2022

Solar and wind data is based on Telemetered Power Stations only



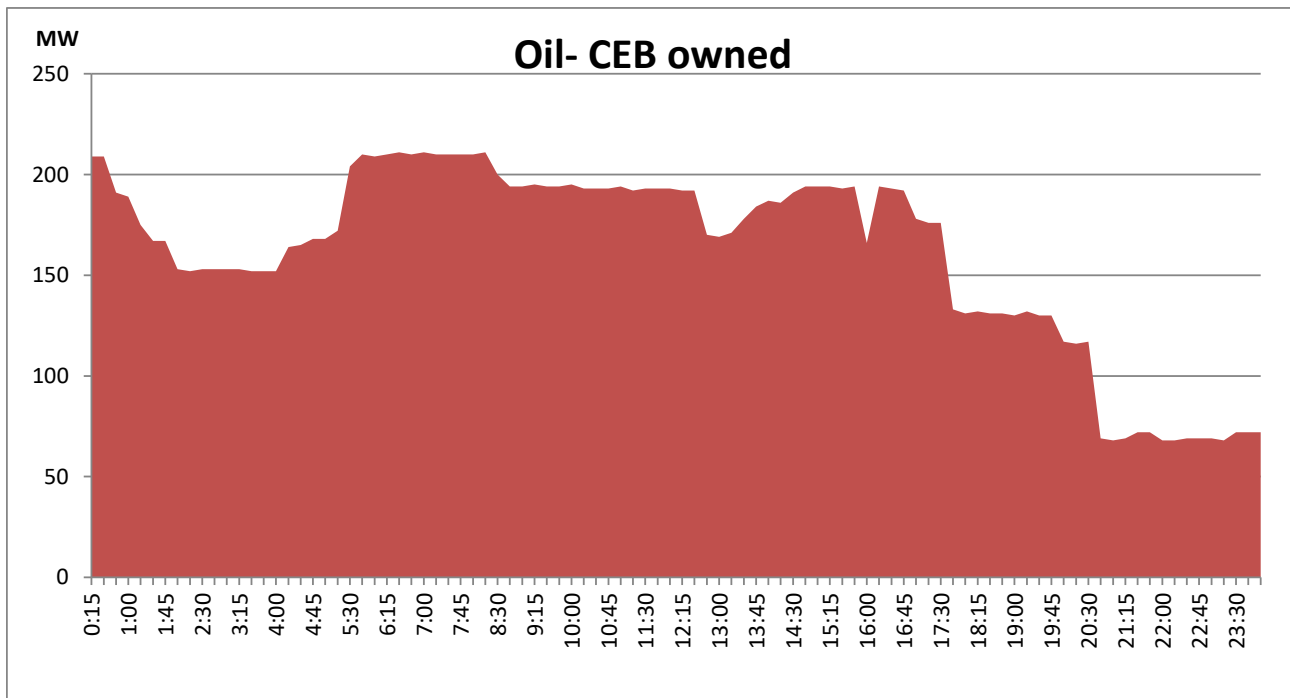
## Coal Generation during the Previous day

February 18, 2022



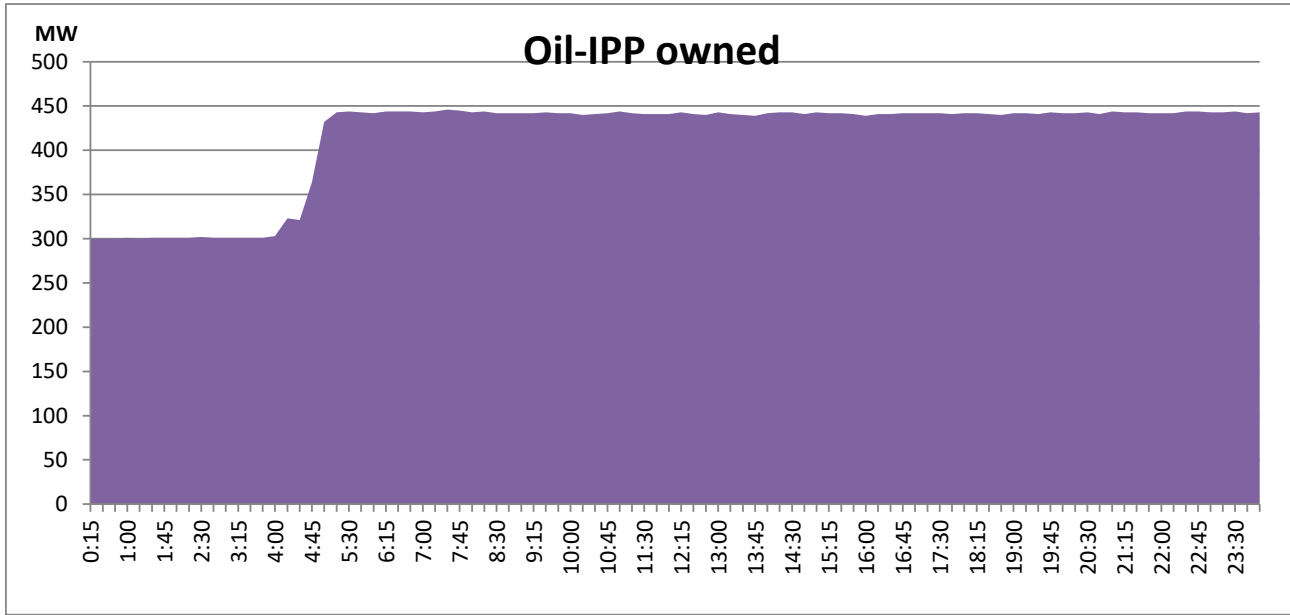
## CEB Oil Plant Generation during the Previous day

February 18, 2022



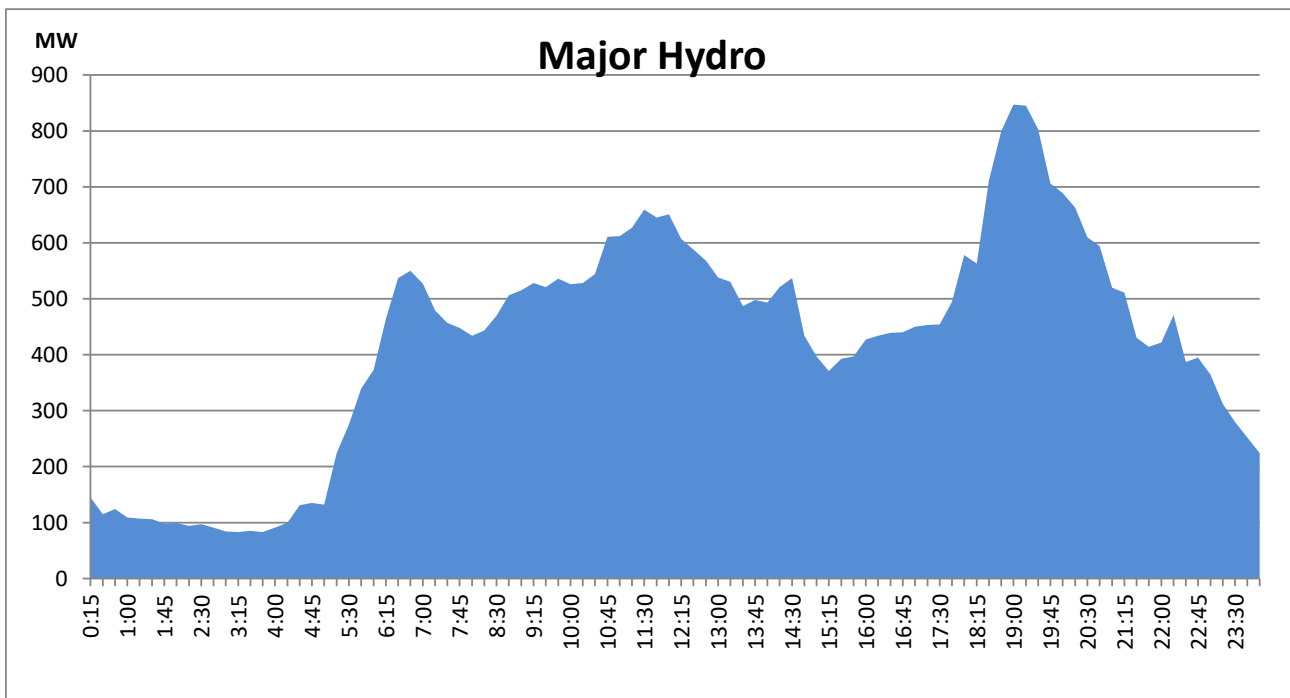
## IPP Oil Plant Generation during the Previous day

February 18, 2022



## Major Hydro Generation during the Previous day

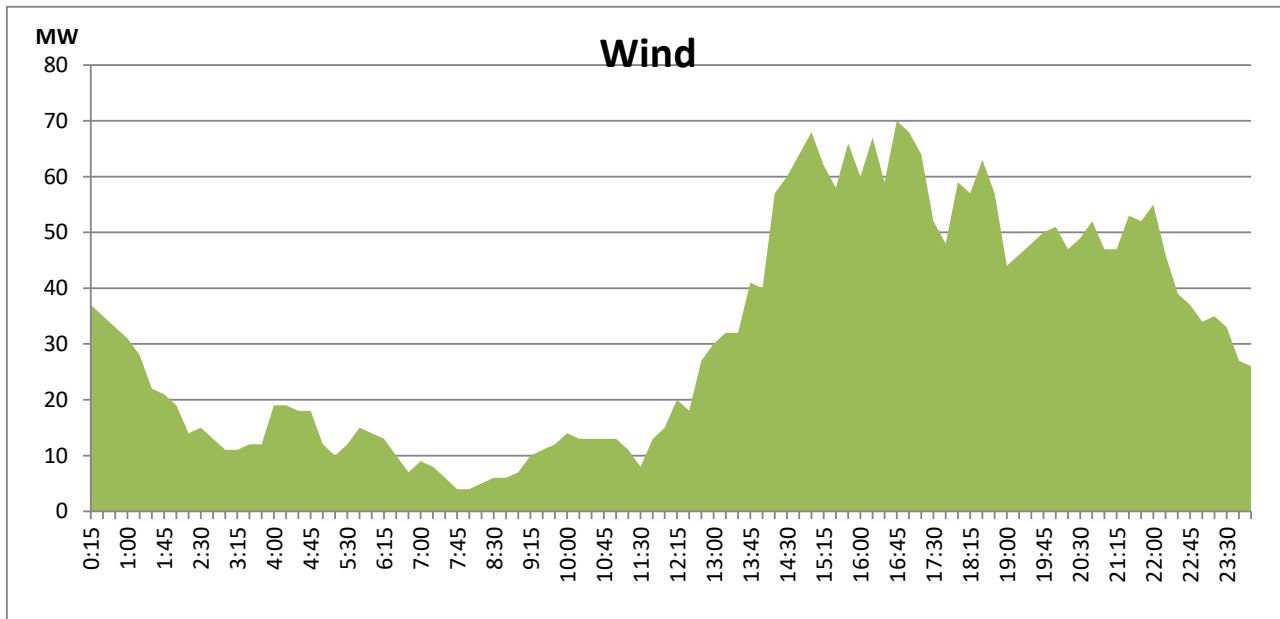
February 18, 2022



## Wind Generation during the Previous day

February 18, 2022

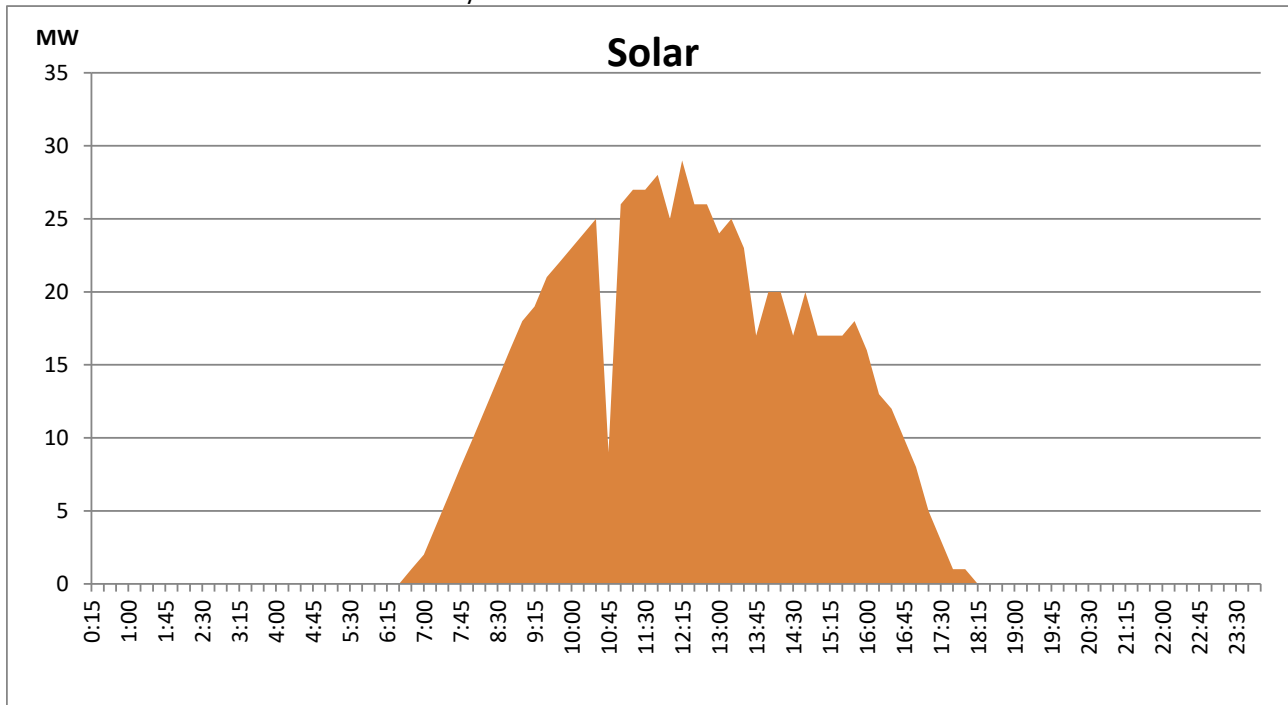
Based on Telemetered Power Stations only



## Solar Generation during the Previous day

February 18, 2022

Based on Telemetered Power Stations only



## Thermal Plant Fuel types

Power Station	Primary Fuel
CEB Thermal	
Sapugaskanda 1	Heavy Fuel
Sapugaskanda 2	Heavy Fuel
Kelanitissa Small Gas Turbines	Auto Diesel
GT 7 - Kelanitissa	Auto Diesel
Kelanitissa CCY	Naptha & Diesel
Lakvijaya 1	Coal
Lakvijaya 2	Coal
Lakvijaya 3	Coal
Uthuru Janani	Heavy Fuel
Barge CEB	Furnace Oil

Power Station	Primary Fuel
Private Thermal	
Sojitz - Kelanitissa	Auto Diesel
West Coast	Low Sulphur Furnace oil

Major Incidents during the day -as reported by CEB morning of

February 20, 2022

- 1) KCCP resumed generation at 14:46hrs after receiving adequate fuel stocks.
- 2) Manual load shedding was carried out from 14:00hrs to 18:00hrs due to the lack of fuel stocks for several thermal power plants.