

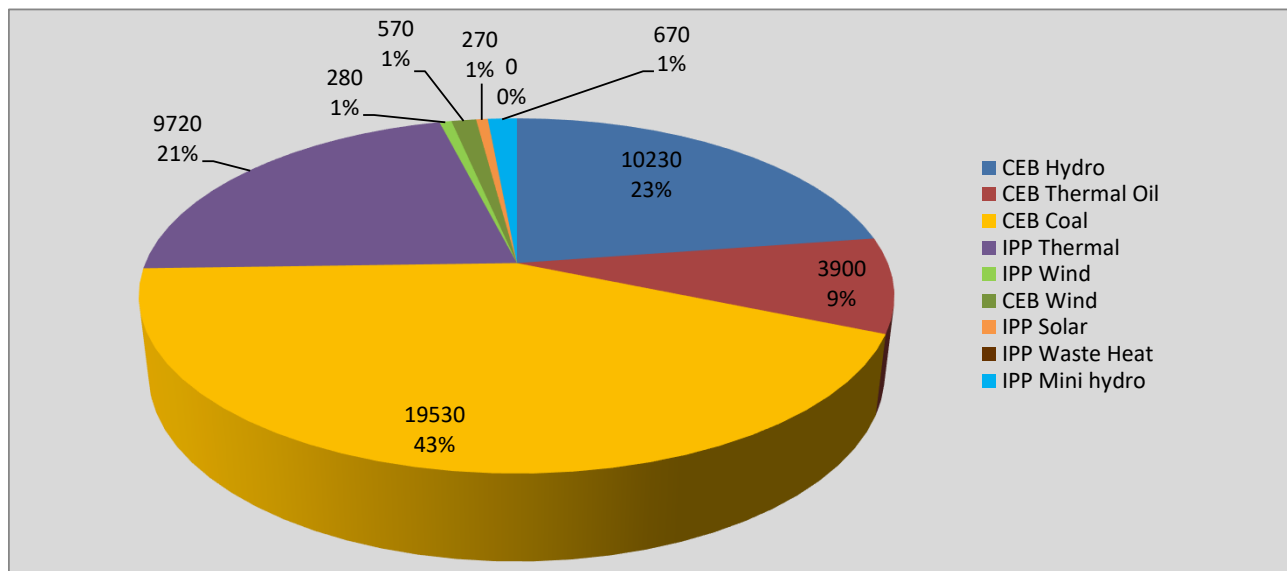
# **Generation and Reservoirs Statistics**

**February 18, 2022**



PUBLIC UTILITIES COMMISSION OF SRI LANKA

## Daily Generation Mix in MWh



**Total Generation** **45,170 MWh**

Note: Above data is excluding contribution from Roof Top Solar, 1MW Solar and certain Mini Hydro plants

## Cumulative Dispatch

Note: Following data is Excluding contribution from Roof Top Solar, 1MW solar and Mini Hydro plants

### For Current Month

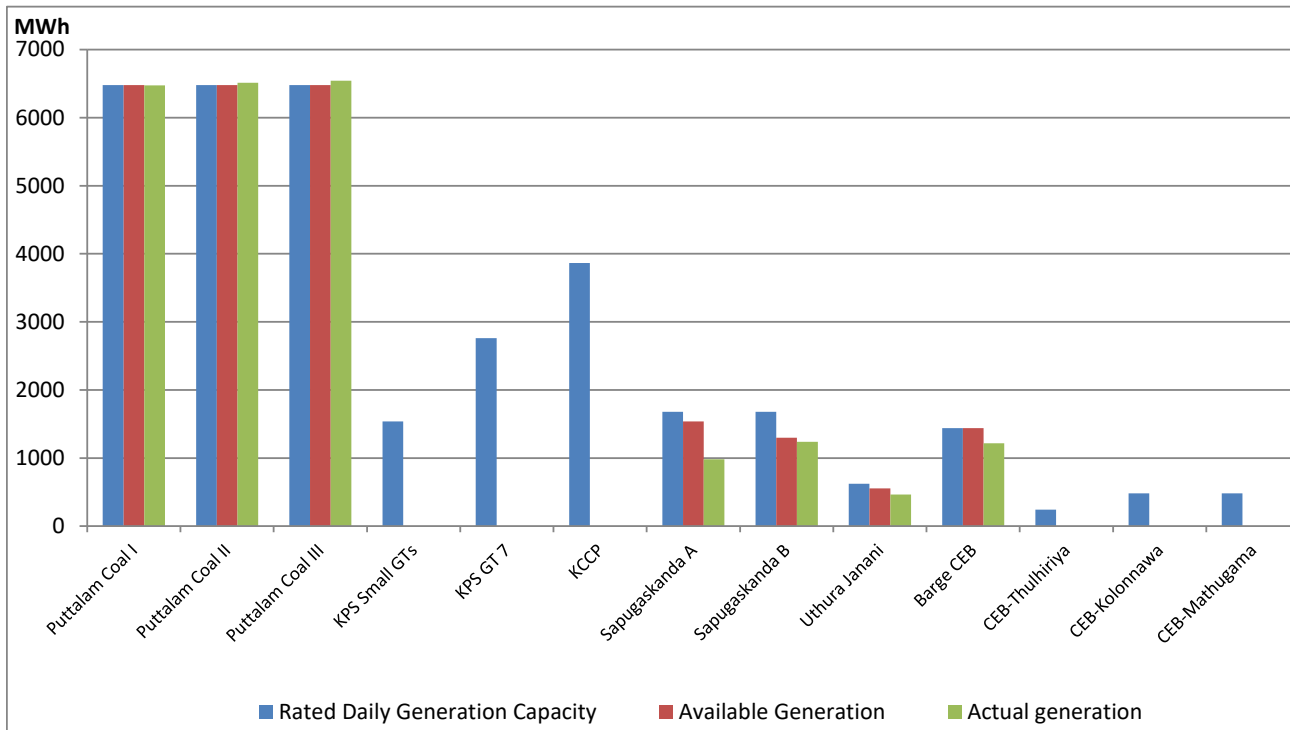
Category	Dispatch (GWh)	Percentage
CEB Hydro	182.4	23.12%
CEB Thermal Oil	110.3	13.98%
CEB Coal	341.4	43.28%
IPP Thermal	117.0	14.83%
SPP Wind	8.2	1.03%
CEB Wind	9.9	1.26%
SPP Solar	4.5	0.57%
SPP Solid Waste	1.3	0.16%
Mini Hydro	14.0	1.77%
<b>Total</b>	<b>788.8</b>	

### For Current Year

Category	Dispatch (GWh)	Percentage
CEB Hydro	589.7	27.70%
CEB Thermal Oil	354.4	16.65%
CEB Coal	748.7	35.16%
IPP Thermal	321.0	15.08%
SPP Wind	23.5	1.10%
CEB Wind	28.0	1.32%
SPP Solar	12.4	0.58%
SPP Solid Waste	9.4	0.44%
Mini Hydro	42.1	1.98%
<b>Total</b>	<b>2,129.0</b>	

## CEB owned Thermal Plant Dispatch

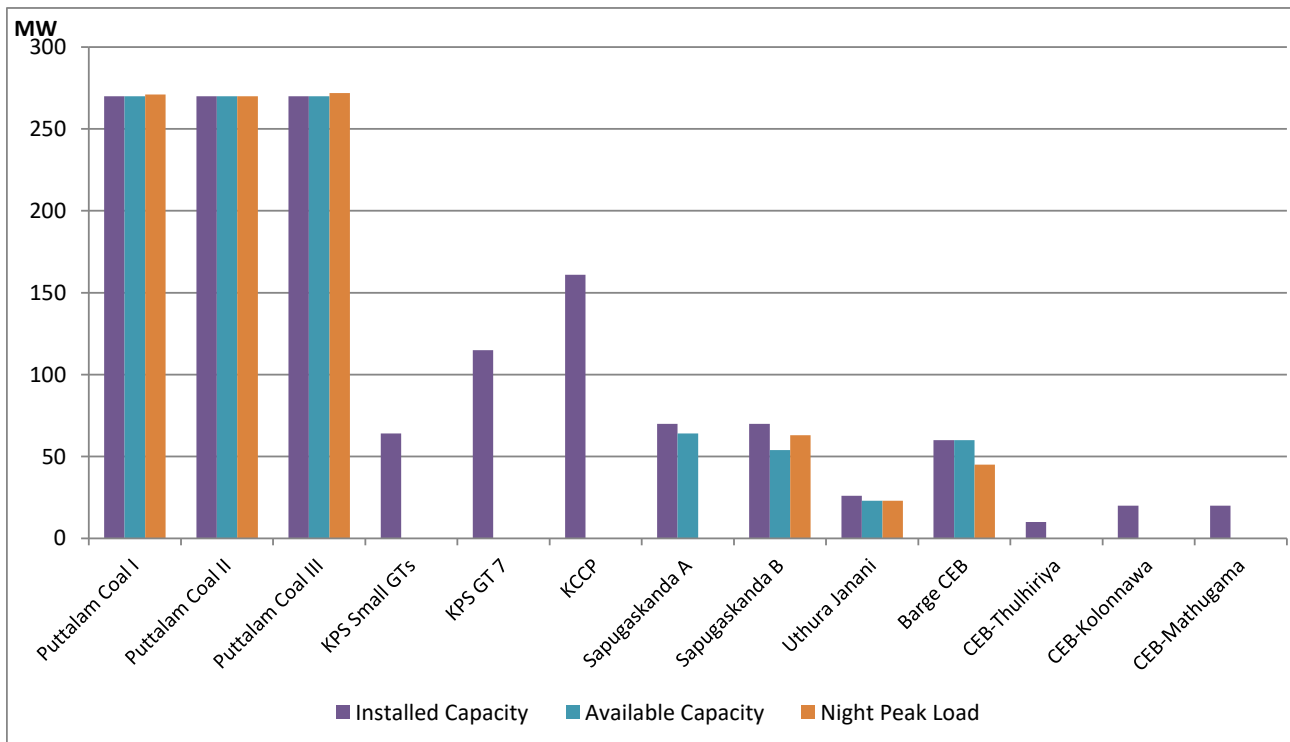
February 18, 2022



Available Generation is estimated based on plant availability at 6.00am on

February 19, 2022

## CEB owned Thermal Plant Loading at the Night Peak



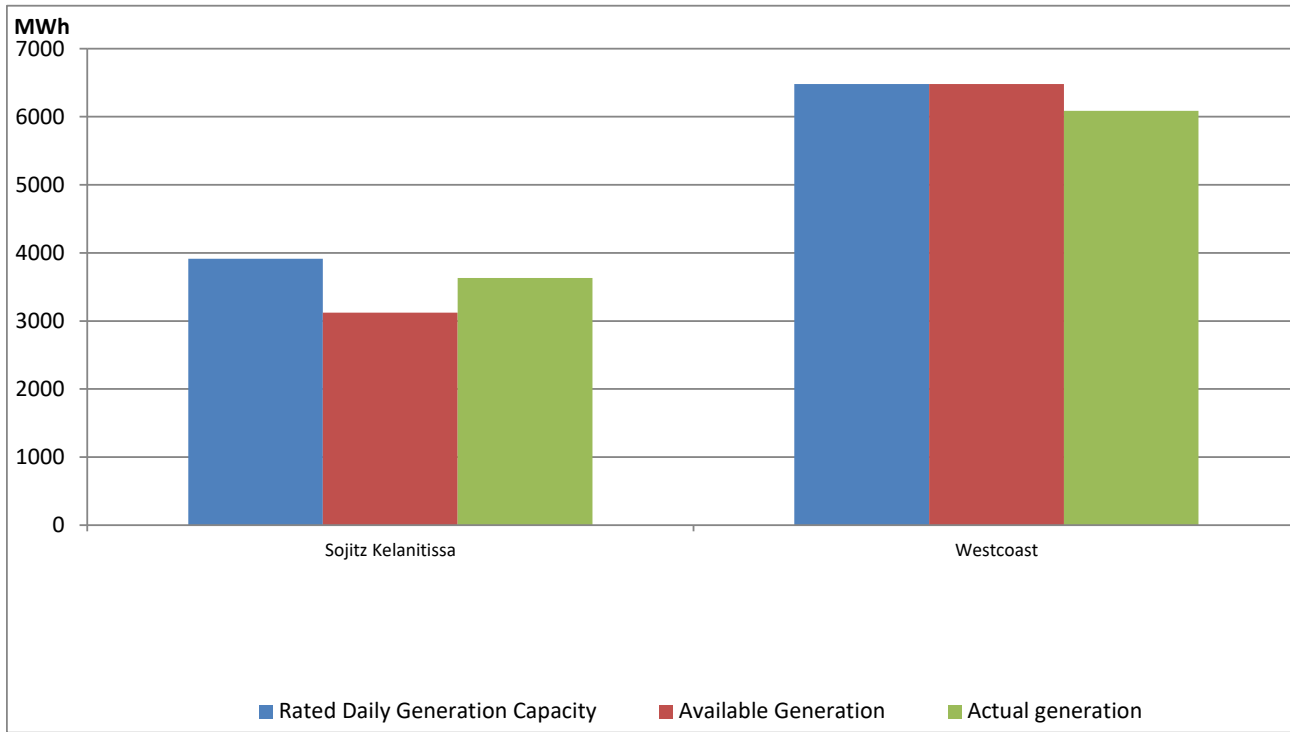
Note- Plant availability is recorded at 6.00 am on

February 19, 2022

## IPP owned Thermal Plant Dispatch

February 18, 2022

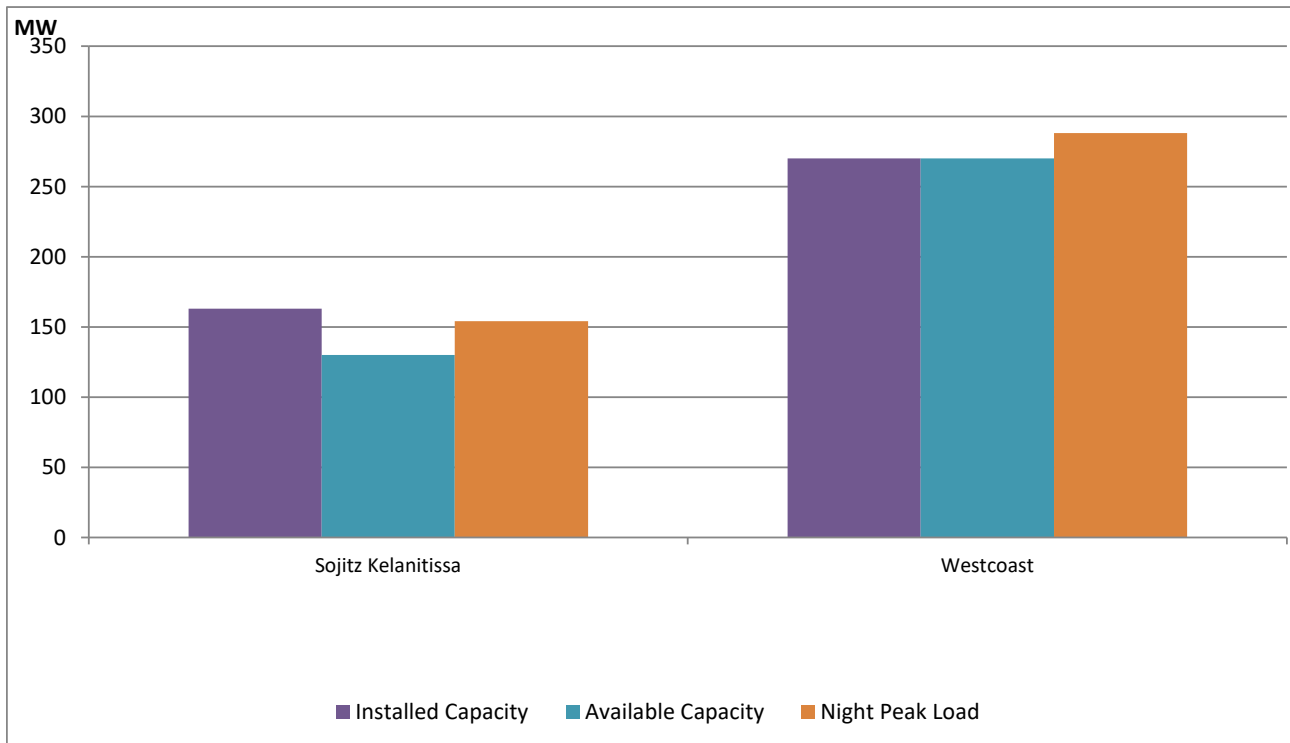
ACE Embilipitiya, ACE Matara, Asia Power, V Power Pallekale, Vpower Galle, V Power Horana, Vpower Hambantota, Vpower Valachchena and Altaqa Mahiyanganaya are not available due to expiration of PPAs



Available Generation is estimated based on plant availability at 6.00am on

February 19, 2022

## IPP owned Thermal Plant Loading at the Night Peak

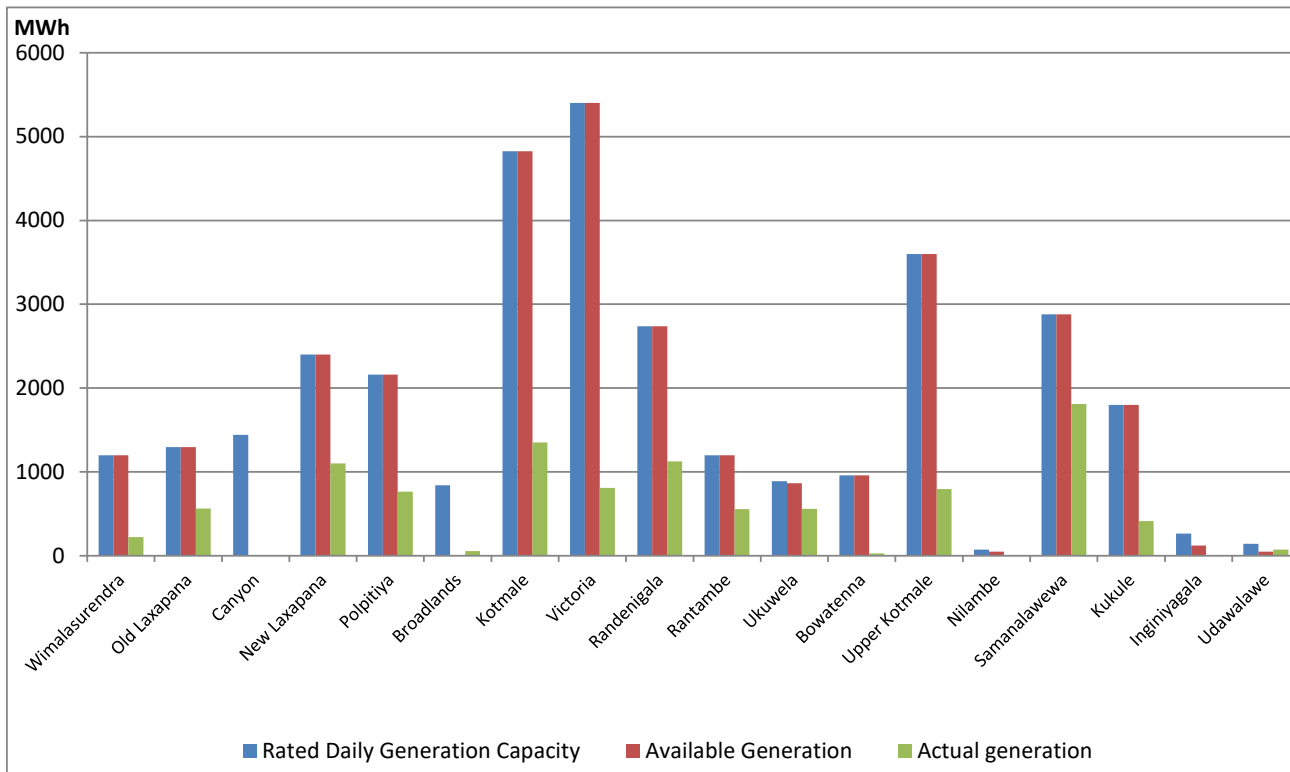


Note- Plant availability is recorded at 6.00 am on

February 19, 2022

## Major Hydro Plant Dispatch

February 18, 2022

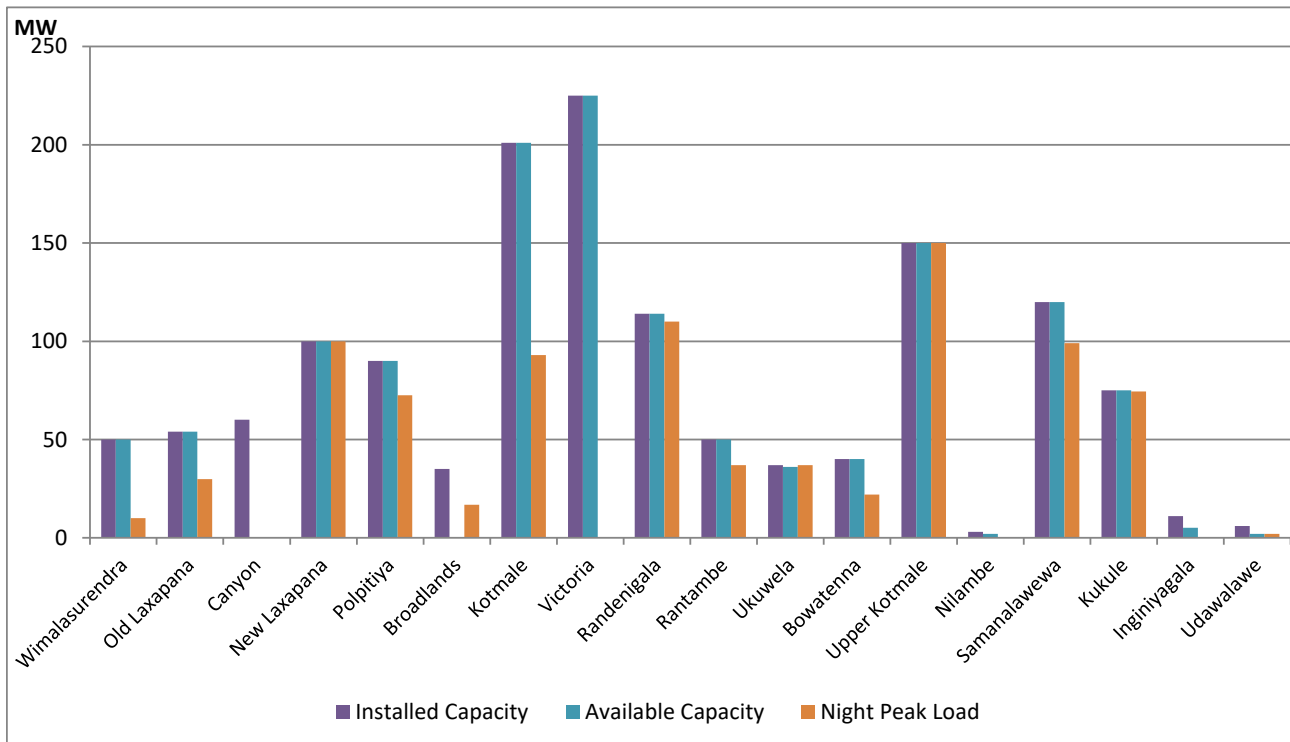


Available Generation is estimated based on plant availability at 6.00am on  
Broadlands power plant is operating in the Commissioning Stage

February 19, 2022

## Major Hydro Plant Loading at Night Peak

February 18, 2022



Note- Plant availability is recorded at 6.00 am on  
Broadlands power plant is operating in the Commissioning Stage

February 19, 2022

## Summary of Major Plant performance

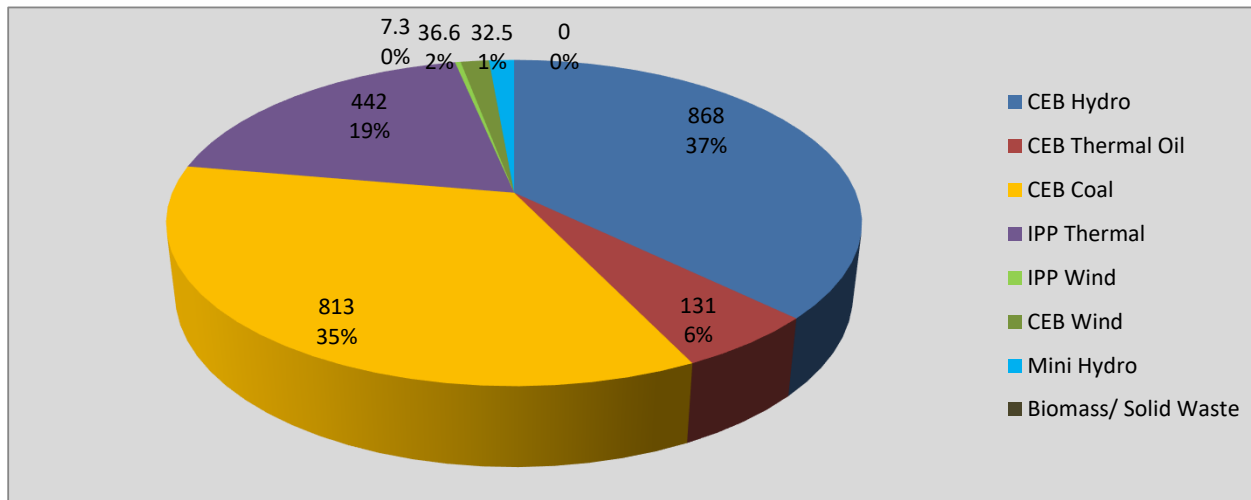
Plant	Installed Capacity (MW)	Plant Availability (MW)	Night peak Load (MW)	Plant Dispatch (MWh)
Wimalasurendra	50	50	10	222
Old Laxapana	54	54	30	562
Canyon	60	0	0	0
New Laxapana	100	100	100	1,101
Polpitiya	90	90	73	764
Broadlands	35	0	17	56
Kotmale	201	201	93	1,350
Victoria	225	225	0	809
Randenigala	114	114	110	1,127
Rantambe	50	50	37	557
Ukuwela	37	36	37	559
Bowatenna	40	40	22	28
Upper Kotmale	150	150	150	795
Nilambe	3	2	0	3
Samanalawewa	120	120	99	1,809
Kukule	75	75	74	413
Inginiyagala	11	5	0	0
Udawalawe	6	2	2	74
Puttalam Coal I	270	270	271	6,474
Puttalam Coal II	270	270	270	6,512
Puttalam Coal III	270	270	272	6,541
KPS Small GTs	64	0	0	0
KPS GT 7	115	0	0	0
KCCP	161	0	0	0
Sapugaskanda A	70	64	0	983
Sapugaskanda B	70	54	63	1,238
Uthura Janani	26	23	23	464
Barge CEB	60	60	45	1,216
CEB-Thulhiriya	10	0	0	0
CEB-Kolonnawa	20	0	0	0
CEB-Mathugama	20	0	0	0
Sojitz Kelanitissa	163	130	154	3,633
West Coast	270	270	288	6,087
Total	3,280	2,725	2,316	45,176

Plant availability is the availability recorded at 6 am on

February 19, 2022

# Contribution to the Night Peak in MW

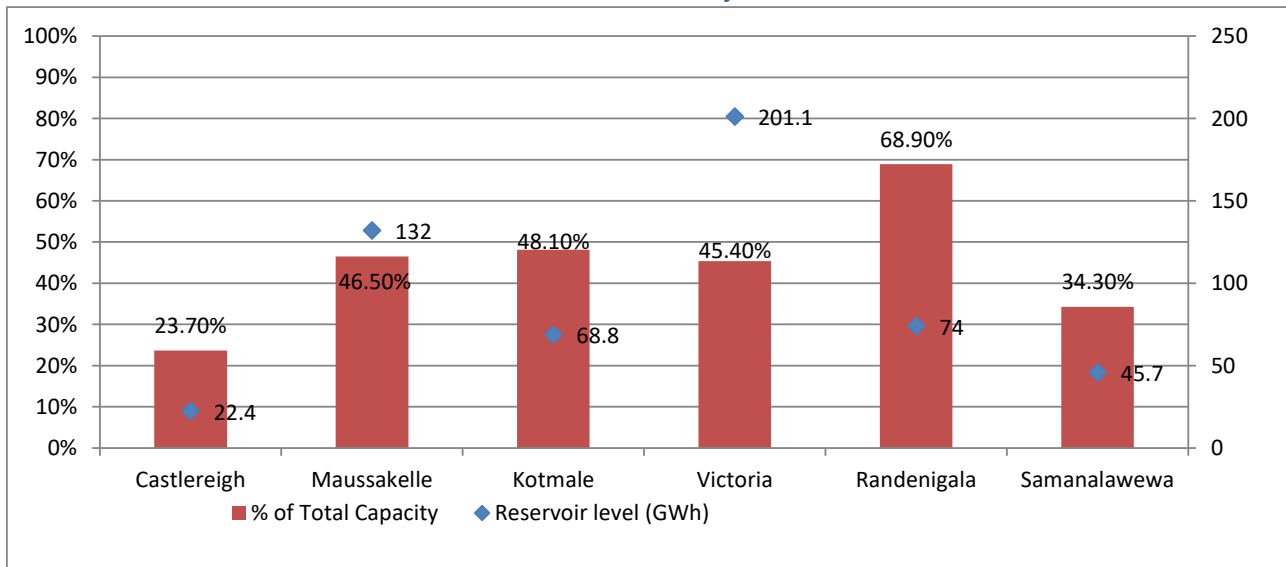
February 18, 2022



Night Peak*	2,329.9 MW
Day Peak	2,164.8 MW
Minimum Demand	1,389.5 MW

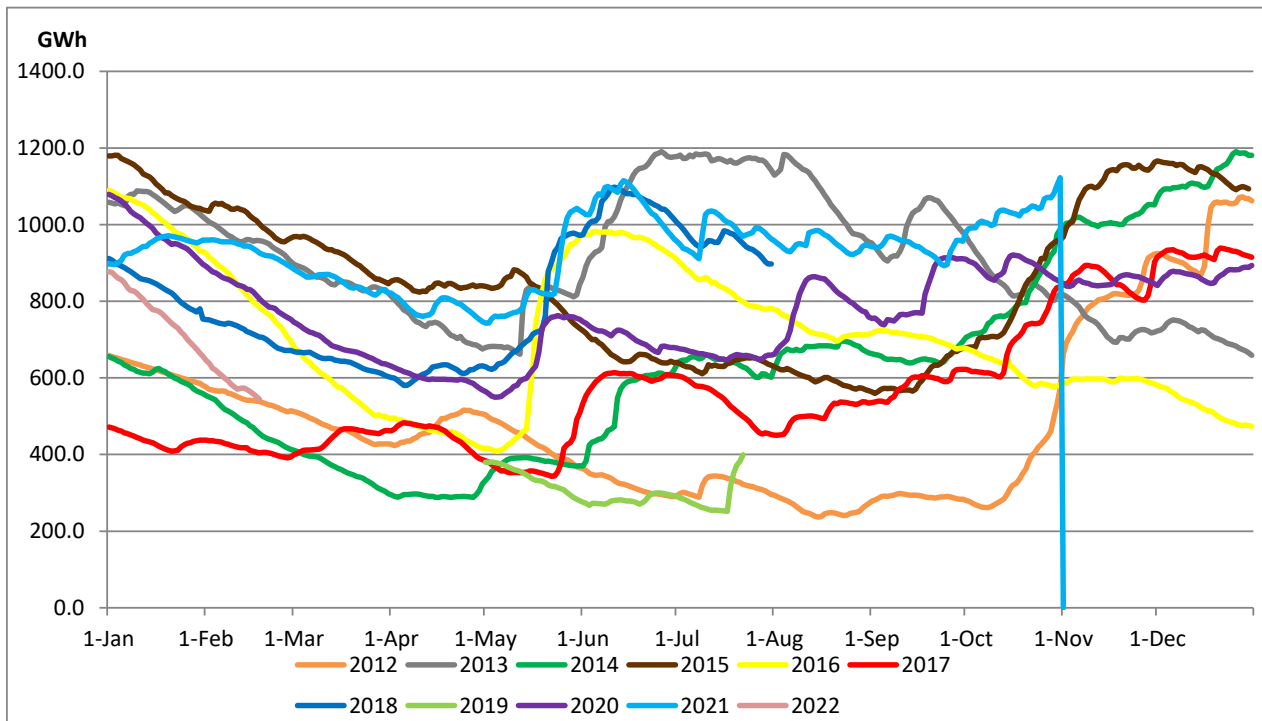
Above figures are excluding contribution from Roof Top Solar, 1MW solar, certain Wind plants and Mini Hydro plants

## Reservoir Levels - as at 06.00 Hr on February 19, 2022



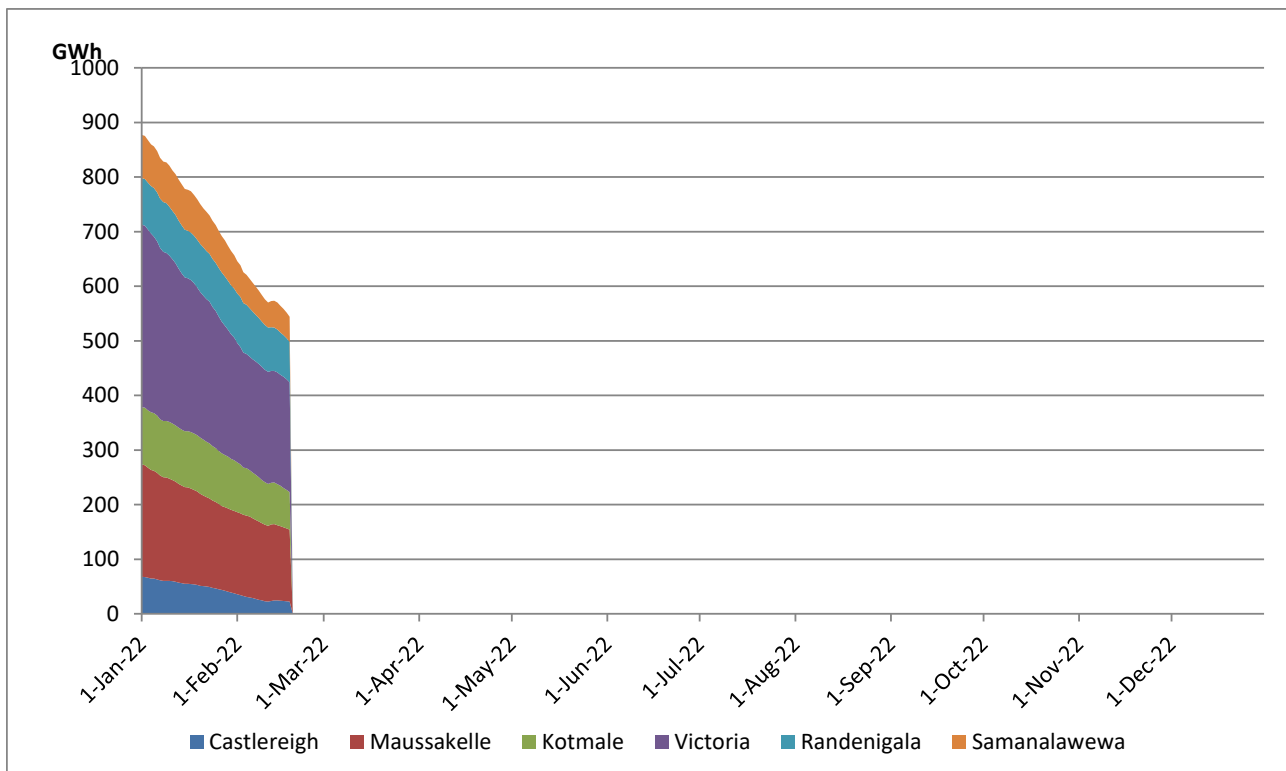
Total Reservoir Level(GWh)	544
% of Total capacity	44.5%

## Comparison of Total Reservoir Storage Levels with Past Years



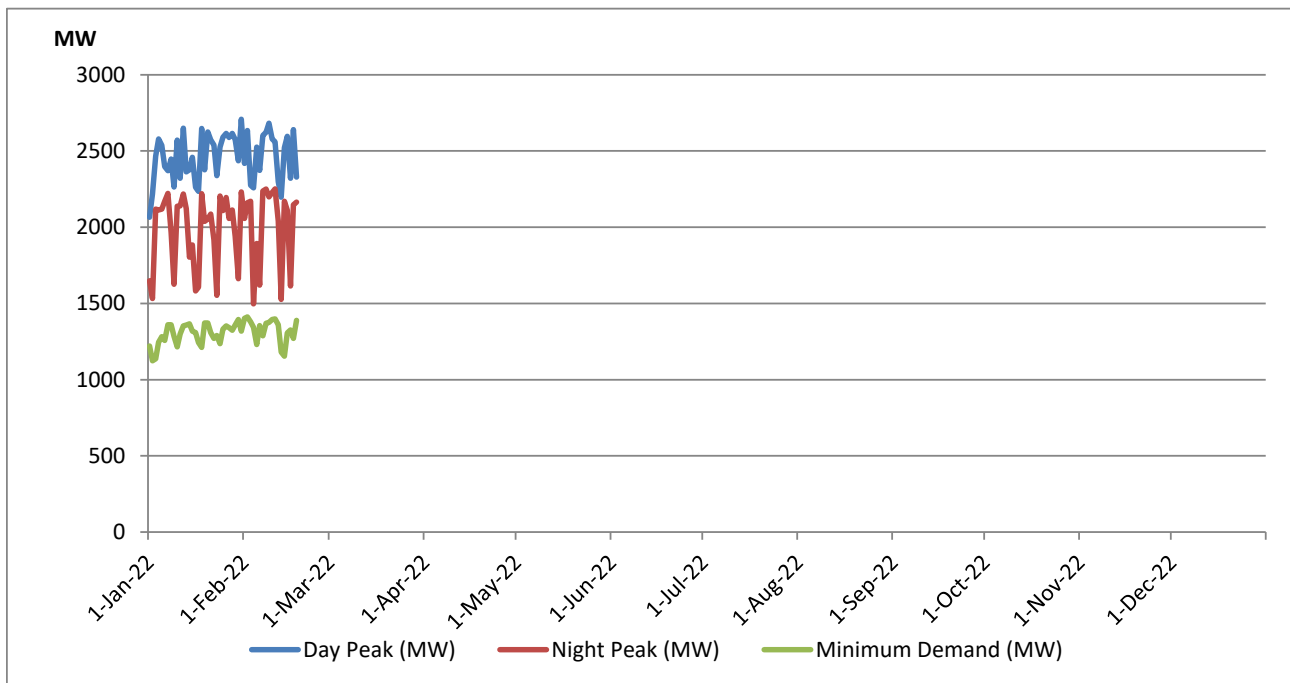
Data for 2018 and 2019 are only available for part of year.

## Variation of Major Hydro Reservoir Levels in the current year (GWh)





## Variation of Demand during the current year

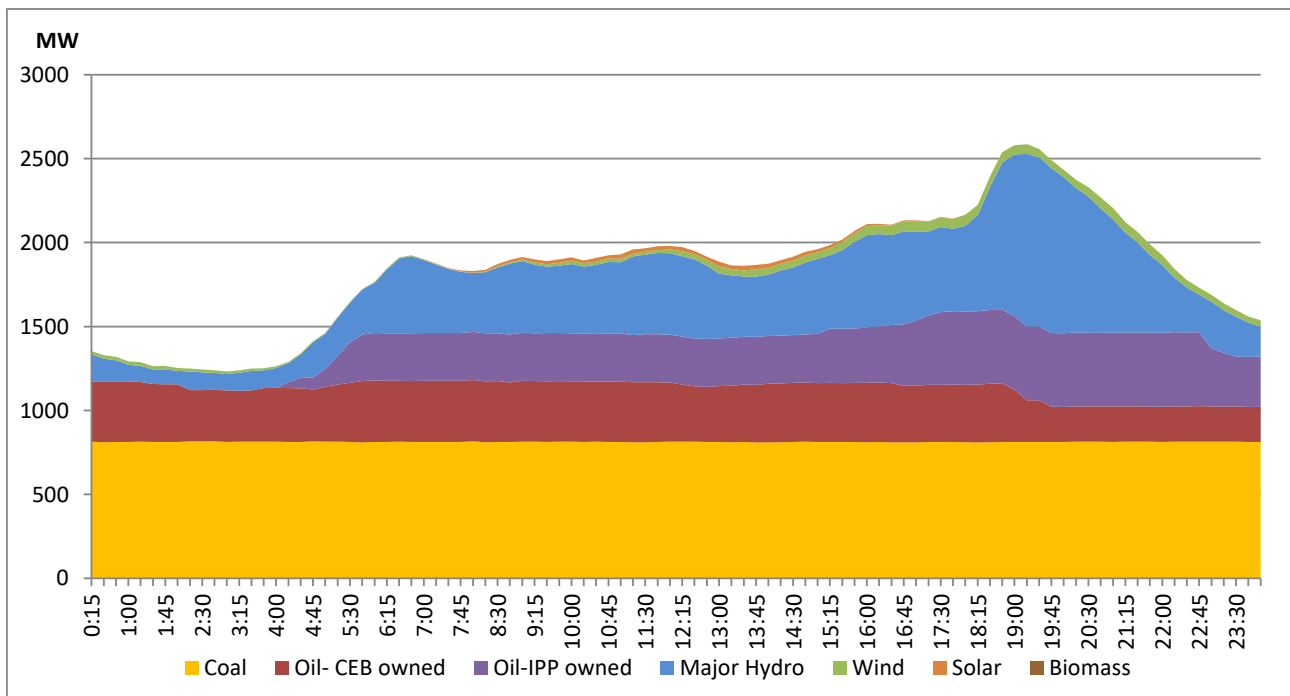


The above figures are excluding contribution from Roof Top Solar, 1MW solar, certain Wind plants and Mini Hydro plants

## Daily Load Curve of the Previous day

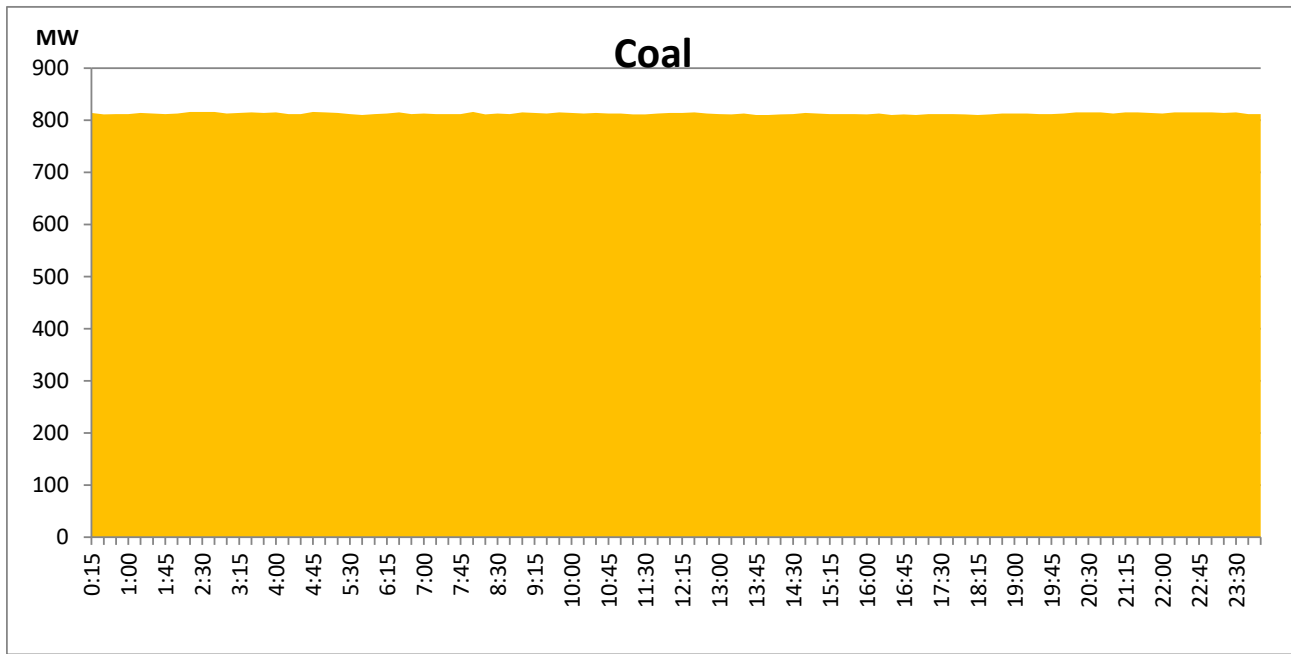
February 17, 2022

Solar and wind data is based on Telemetered Power Stations only



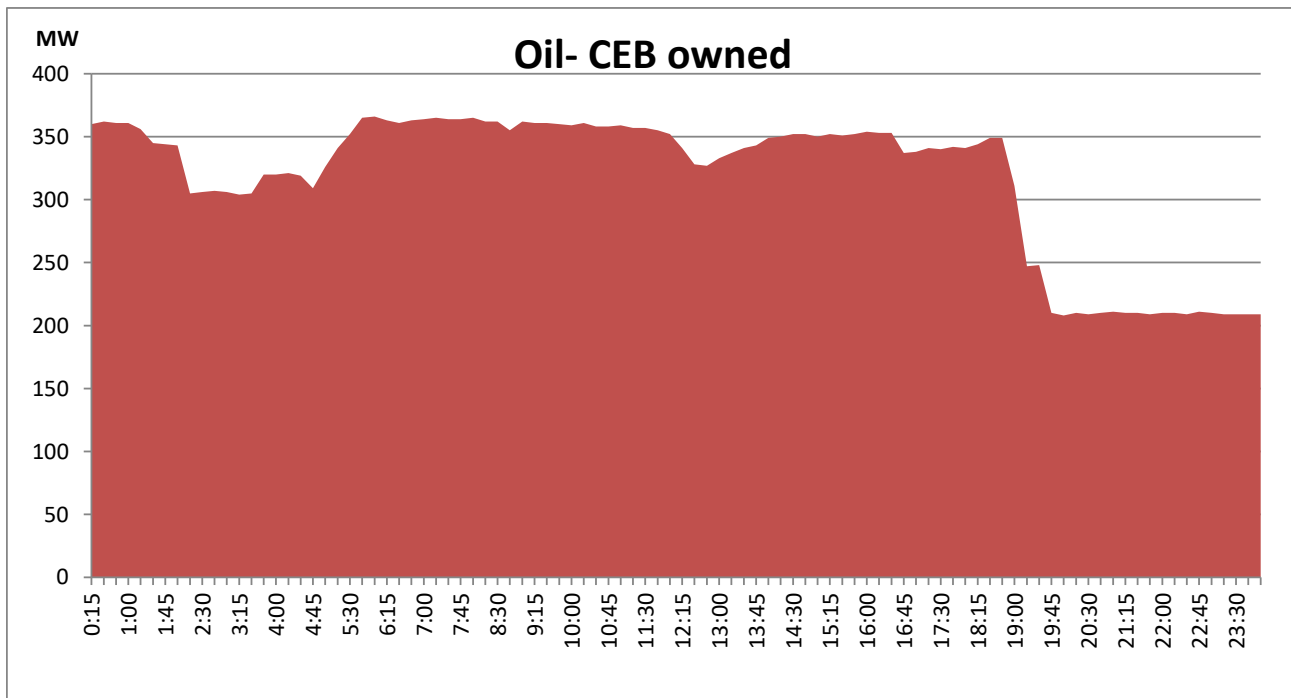
## Coal Generation during the Previous day

February 17, 2022



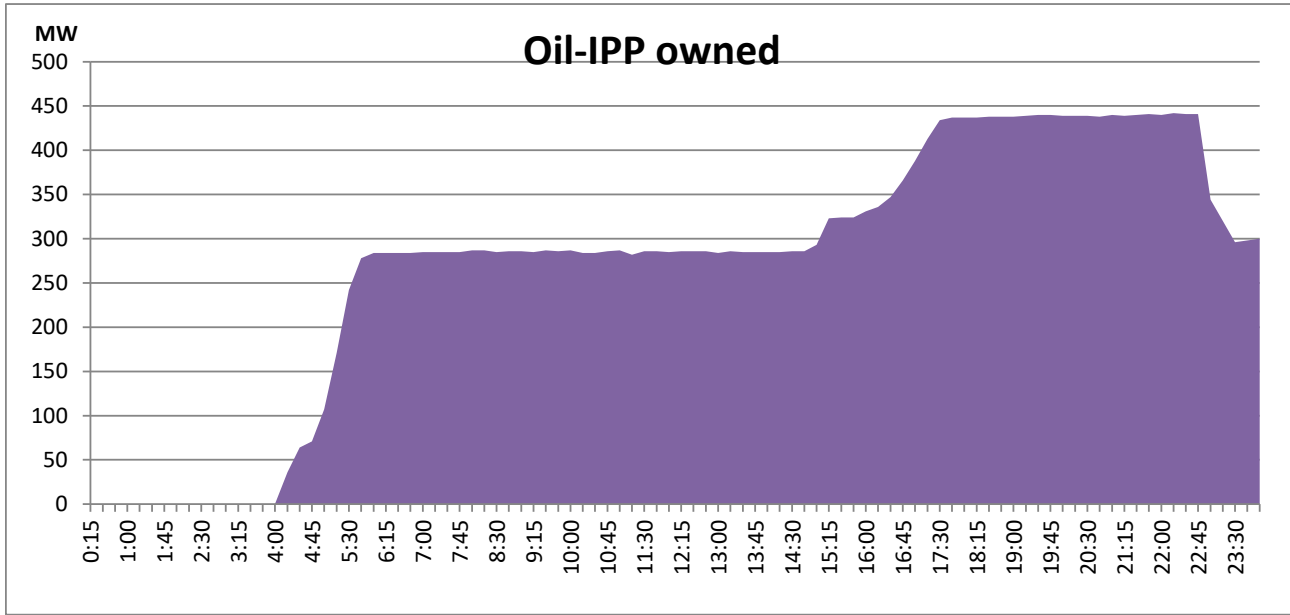
## CEB Oil Plant Generation during the Previous day

February 17, 2022



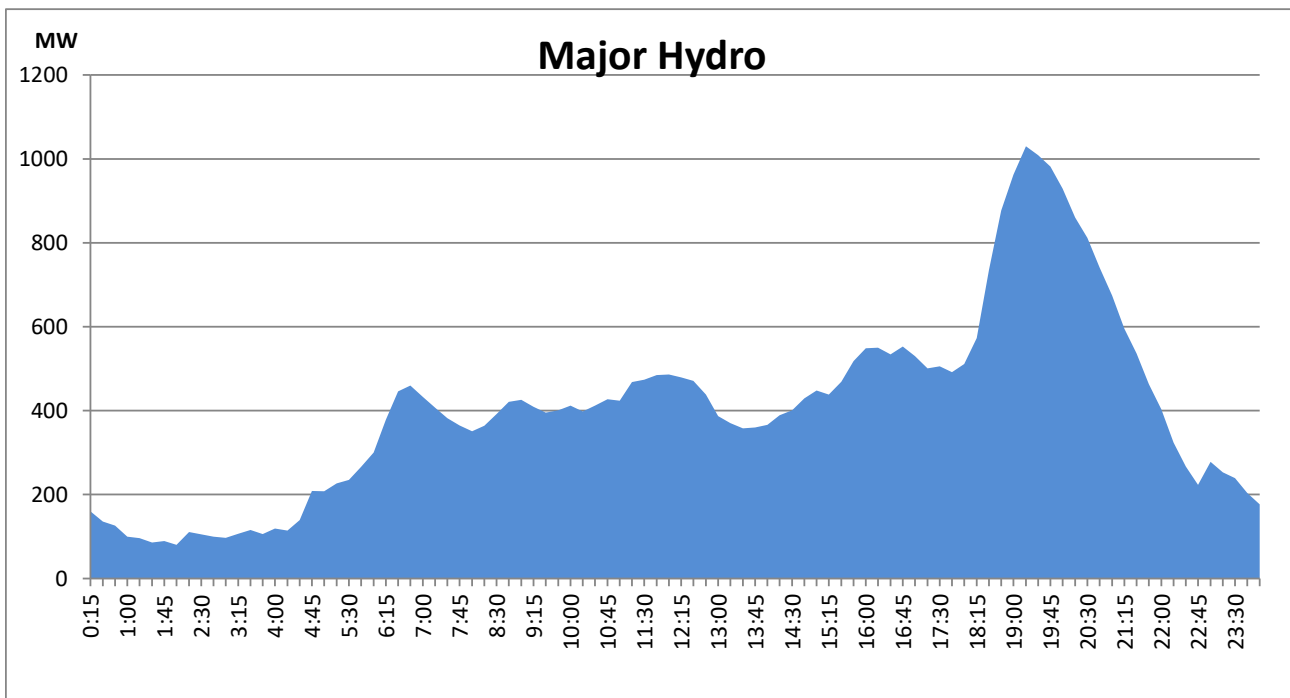
## IPP Oil Plant Generation during the Previous day

February 17, 2022



## Major Hydro Generation during the Previous day

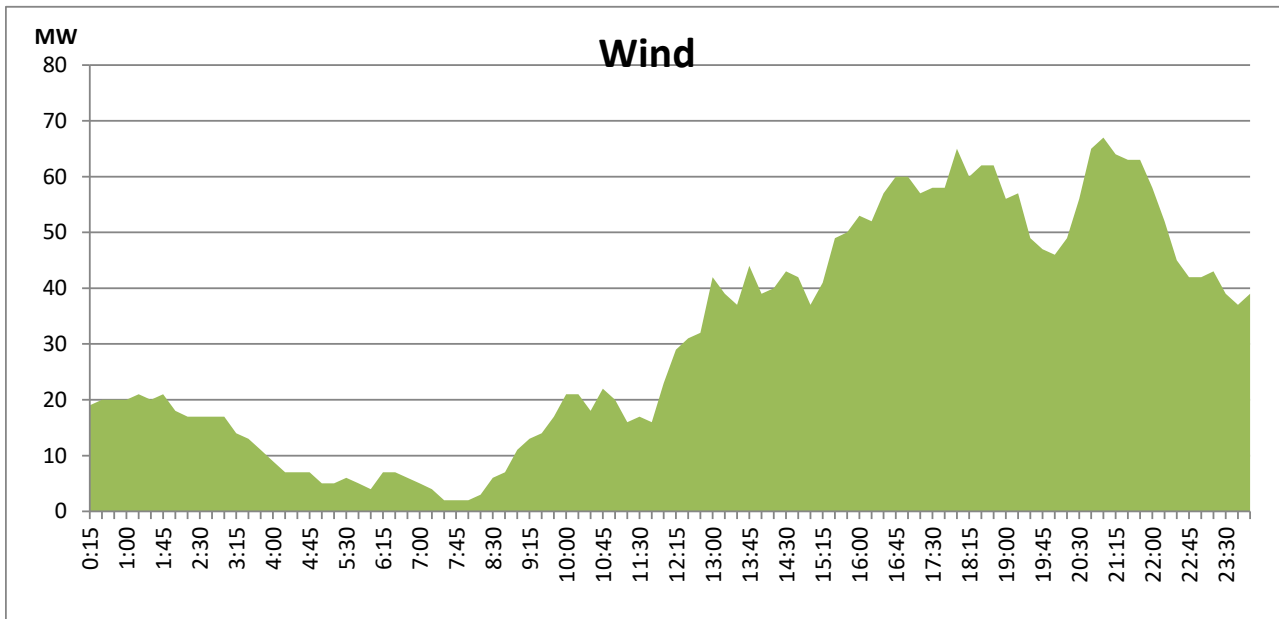
February 17, 2022



## Wind Generation during the Previous day

February 17, 2022

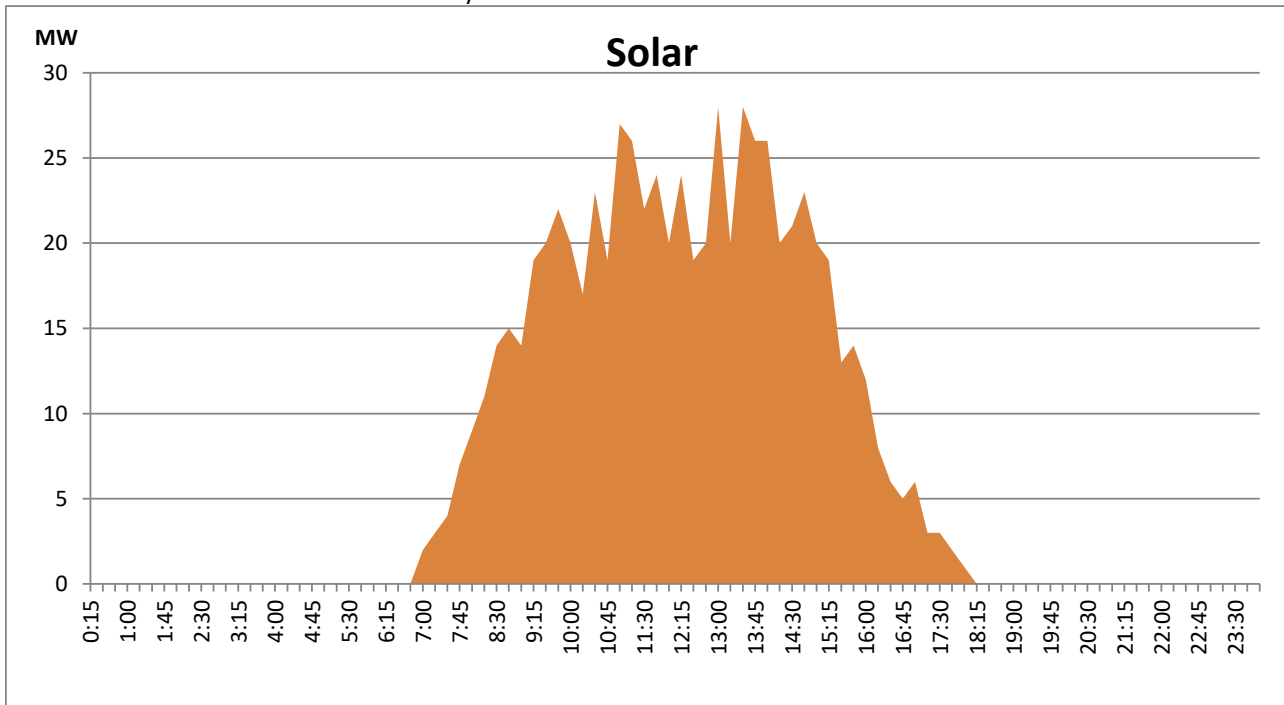
Based on Telemetered Power Stations only



## Solar Generation during the Previous day

February 17, 2022

Based on Telemetered Power Stations only



**Thermal Plant Fuel types**

<b>Power Station</b>	<b>Primary Fuel</b>
<b>CEB Thermal</b>	
<b>Sapugaskanda 1</b>	Heavy Fuel
<b>Sapugaskanda 2</b>	Heavy Fuel
<b>Kelanitissa Small Gas Turbines</b>	Auto Diesel
<b>GT 7 - Kelanitissa</b>	Auto Diesel
<b>Kelanitissa CCY</b>	Naptha & Diesel
<b>Lakvijaya 1</b>	Coal
<b>Lakvijaya 2</b>	Coal
<b>Lakvijaya 3</b>	Coal
<b>Uthuru Janani</b>	Heavy Fuel
<b>Barge CEB</b>	Furnace Oil

<b>Power Station</b>	<b>Primary Fuel</b>
<b>Private Thermal</b>	
<b>Sojitz - Kelanitissa</b>	Auto Diesel
<b>West Coast</b>	Low Sulphur Furnace oil

**Major Incidents during the day -as reported by CEB morning of****February 19, 2022**

- 1) Sapugaskanda A made forced shutdown at 17:40 hrs due to lack of fuel stocks. Sapugaskanda A made available at 3:00 hrs on 19/02/2022.
- 2) Sapugaskanda B Made forced shutdown at 20:40 hrs due to lack of fuel stocks. Sapugaskanda B resumed generation at 2:46 hrs on 19/02/2022.
- 3) Sub N-Sub F 132kV cable switched off at 20:44 hrs due to nearby fire. The cable is yet to normalize.