

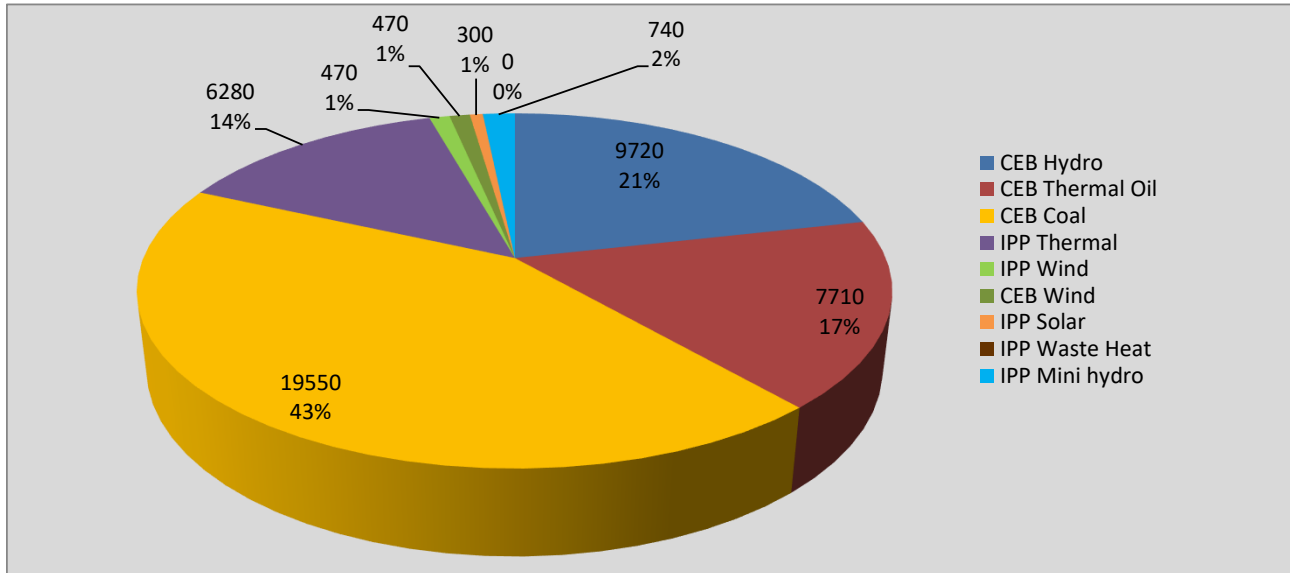
Generation and Reservoirs Statistics

February 17, 2022



PUBLIC UTILITIES COMMISSION OF SRI LANKA

Daily Generation Mix in MWh



Total Generation **45,240 MWh**

Note: Above data is excluding contribution from Roof Top Solar, 1MW Solar and certain Mini Hydro plants

Cumulative Dispatch

Note: Following data is Excluding contribution from Roof Top Solar, 1MW solar and Mini Hydro plants

For Current Month

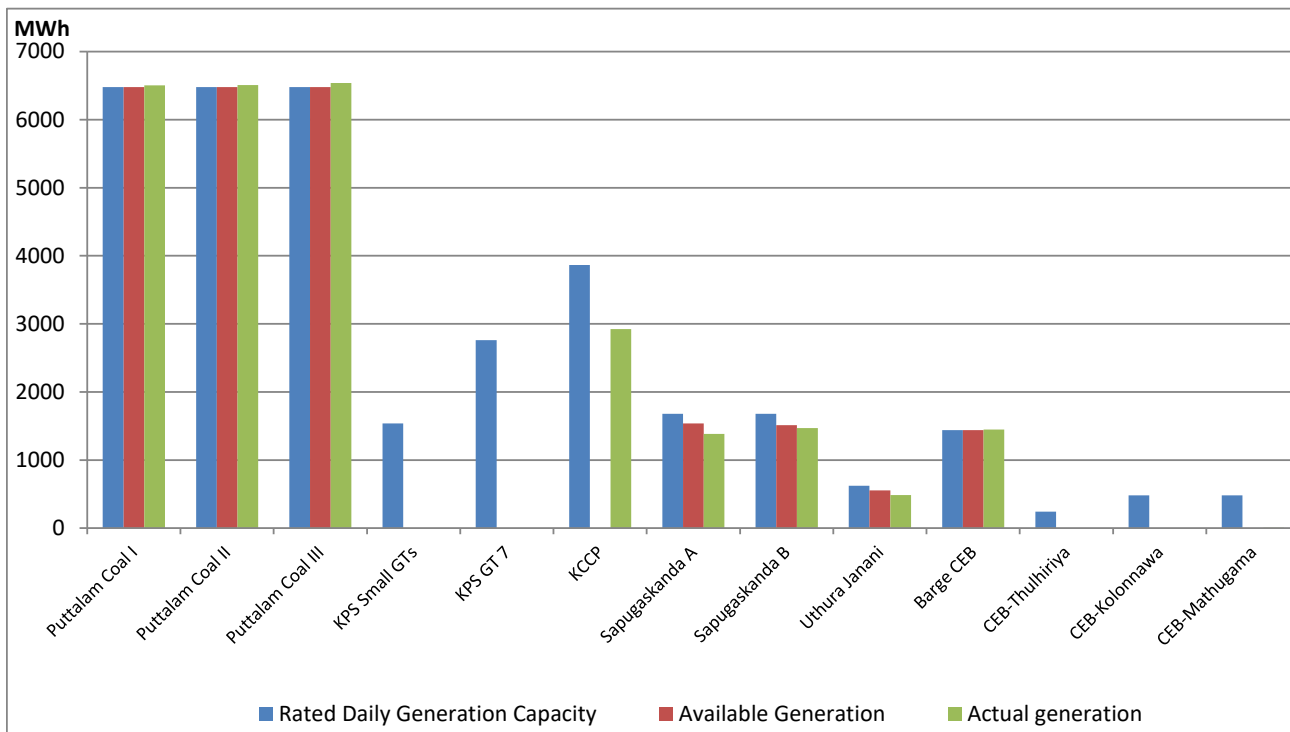
Category	Dispatch (GWh)	Percentage
CEB Hydro	172.1	23.15%
CEB Thermal Oil	106.4	14.31%
CEB Coal	321.9	43.28%
IPP Thermal	107.3	14.42%
SPP Wind	7.9	1.06%
CEB Wind	9.4	1.26%
SPP Solar	4.2	0.57%
SPP Solid Waste	1.3	0.17%
Mini Hydro	13.3	1.79%
Total	743.7	

For Current Year

Category	Dispatch (GWh)	Percentage
CEB Hydro	579.4	27.81%
CEB Thermal Oil	350.5	16.82%
CEB Coal	729.1	34.99%
IPP Thermal	311.3	14.94%
SPP Wind	23.2	1.11%
CEB Wind	27.5	1.32%
SPP Solar	12.2	0.58%
SPP Solid Waste	9.4	0.45%
Mini Hydro	41.5	1.99%
Total	2,083.8	

CEB owned Thermal Plant Dispatch

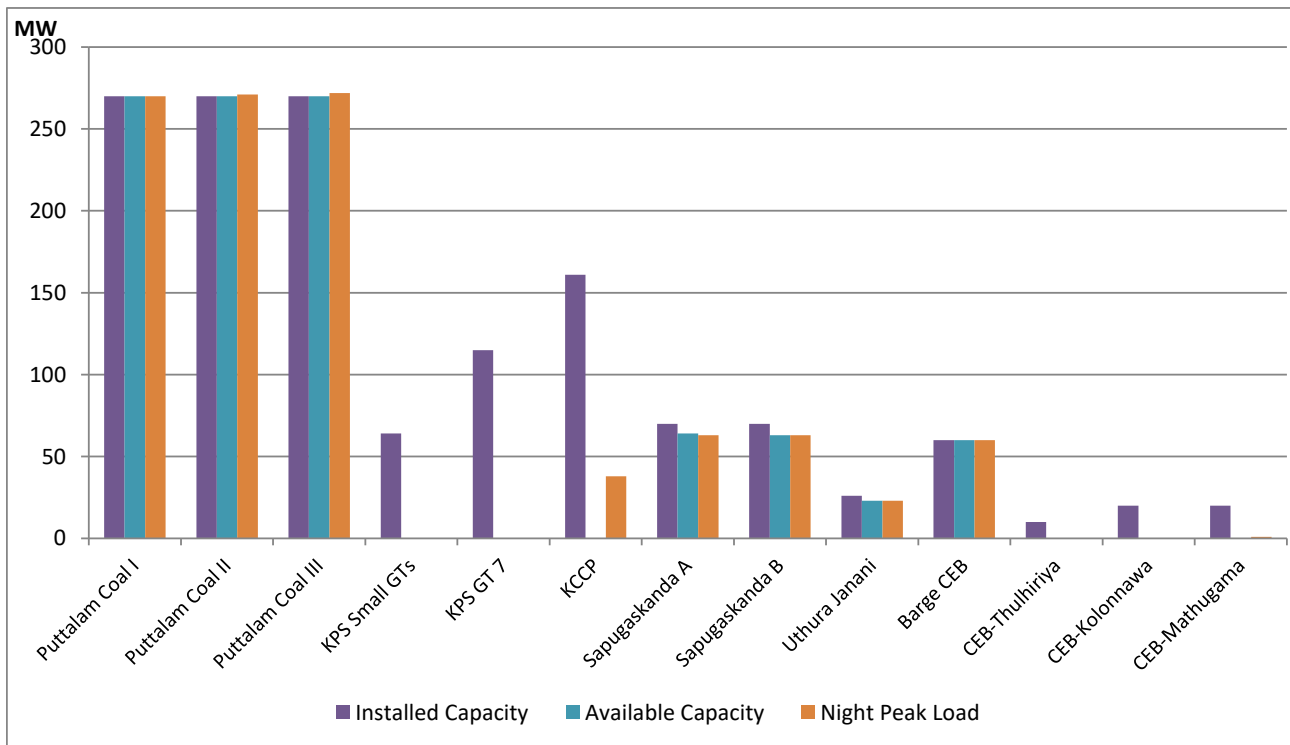
February 17, 2022



Available Generation is estimated based on plant availability at 6.00am on

February 18, 2022

CEB owned Thermal Plant Loading at the Night Peak



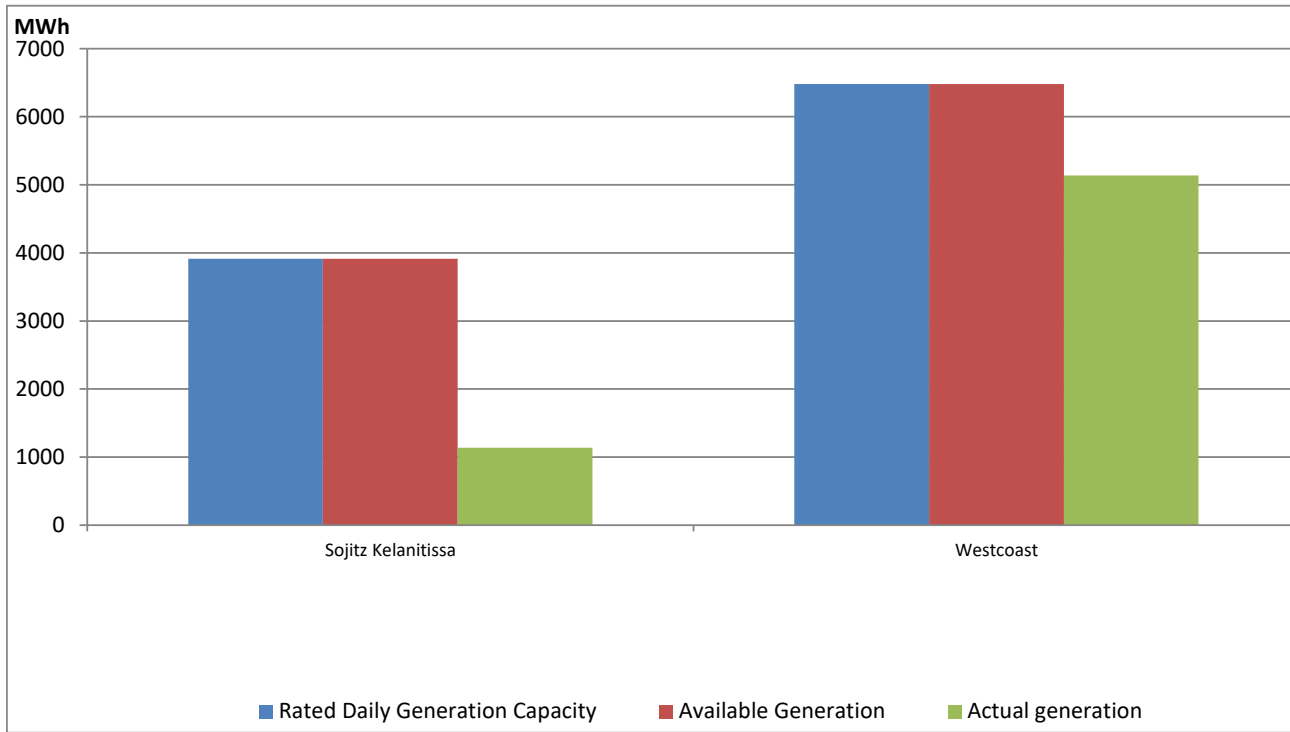
Note- Plant availability is recorded at 6.00 am on

February 18, 2022

IPP owned Thermal Plant Dispatch

February 17, 2022

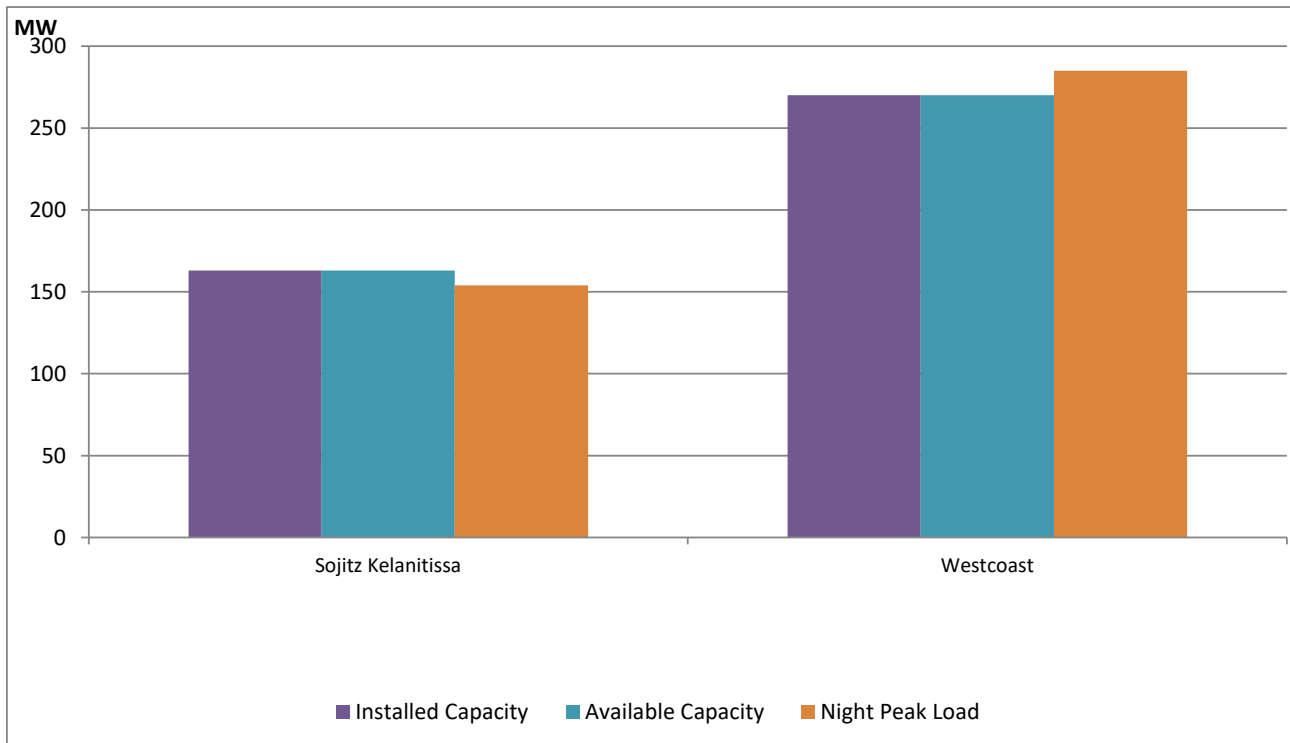
ACE Embilipitiya, ACE Matara, Asia Power, V Power Pallekale, Vpower Galle, V Power Horana, Vpower Hambantota, Vpower Valachchena and Altaqa Mahiyanganaya are not available due to expiration of PPAs



Available Generation is estimated based on plant availability at 6.00am on

February 18, 2022

IPP owned Thermal Plant Loading at the Night Peak

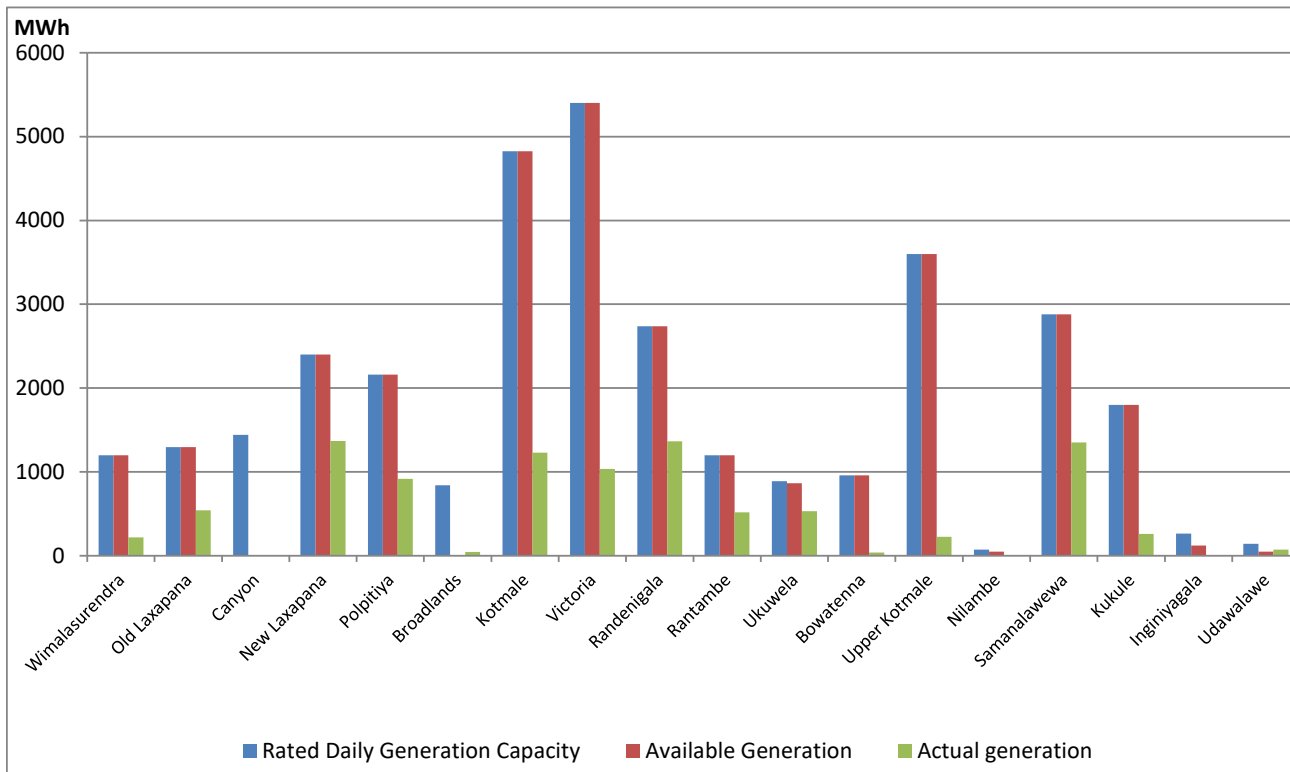


Note- Plant availability is recorded at 6.00 am on

February 18, 2022

Major Hydro Plant Dispatch

February 17, 2022

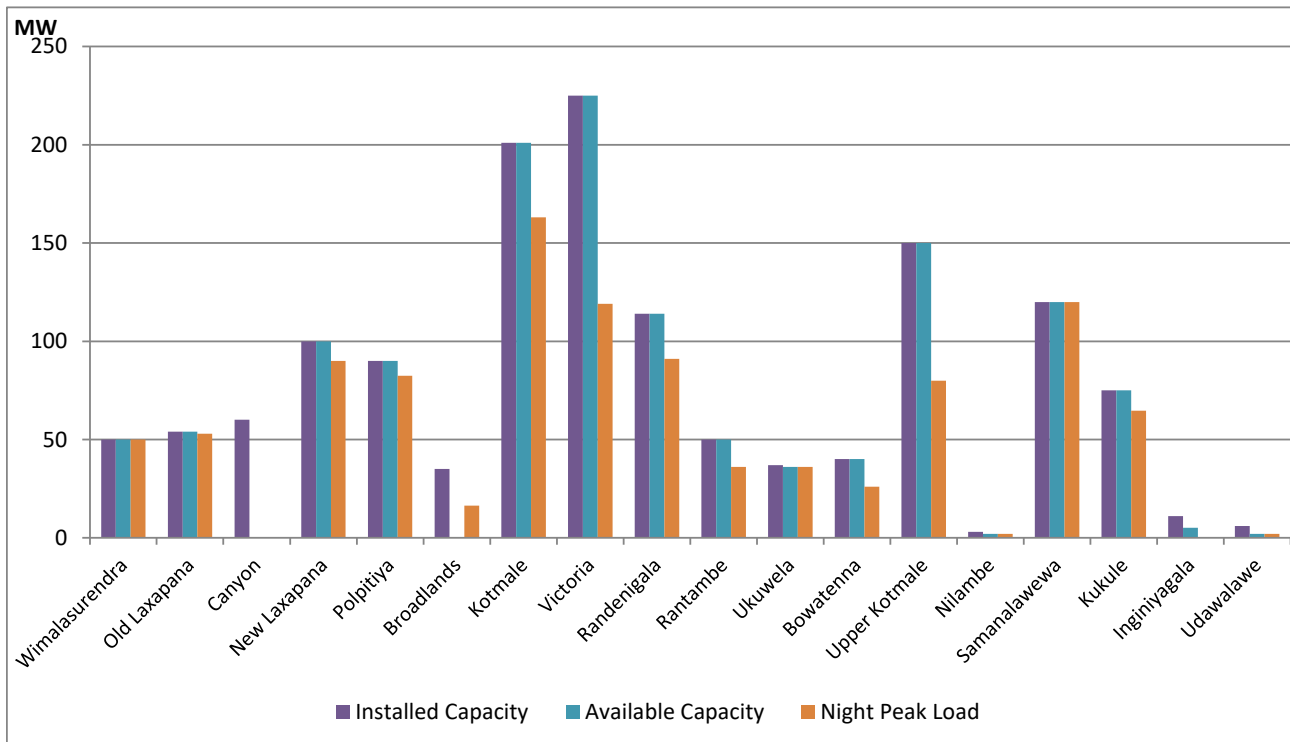


Available Generation is estimated based on plant availability at 6.00am on
Broadlands power plant is operating in the Commissioning Stage

February 18, 2022

Major Hydro Plant Loading at Night Peak

February 17, 2022



Note- Plant availability is recorded at 6.00 am on
Broadlands power plant is operating in the Commissioning Stage

February 18, 2022

Summary of Major Plant performance

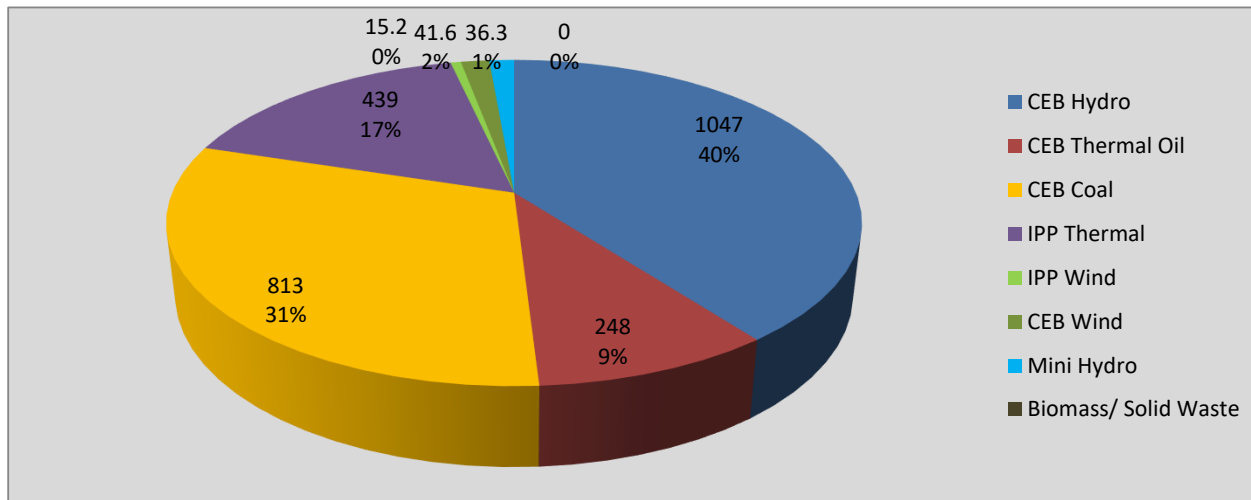
Plant	Installed Capacity (MW)	Plant Availability (MW)	Night peak Load (MW)	Plant Dispatch (MWh)
Wimalasurendra	50	50	50	218
Old Laxapana	54	54	53	542
Canyon	60	0	0	0
New Laxapana	100	100	90	1,368
Polpitiya	90	90	83	917
Broadlands	35	0	16	45
Kotmale	201	201	163	1,230
Victoria	225	225	119	1,034
Randenigala	114	114	91	1,366
Rantambe	50	50	36	518
Ukuwela	37	36	36	531
Bowatenna	40	40	26	38
Upper Kotmale	150	150	80	226
Nilambe	3	2	2	5
Samanalawewa	120	120	120	1,353
Kukule	75	75	65	259
Inginiyagala	11	5	0	0
Udawalawe	6	2	2	73
Puttalam Coal I	270	270	270	6,502
Puttalam Coal II	270	270	271	6,509
Puttalam Coal III	270	270	272	6,537
KPS Small GTs	64	0	0	0
KPS GT 7	115	0	0	0
KCCP	161	0	38	2,923
Sapugaskanda A	70	64	63	1,382
Sapugaskanda B	70	63	63	1,469
Uthura Janani	26	23	23	483
Barge CEB	60	60	60	1,448
CEB-Thulhiriya	10	0	0	0
CEB-Kolonnawa	20	0	0	0
CEB-Mathugama	20	0	1	7
Sojitz Kelanitissa	163	163	154	1,138
West Coast	270	270	285	5,139
Total	3,280	2,767	2,625	45,251

Plant availability is the availability recorded at 6 am on

February 18, 2022

Contribution to the Night Peak in MW

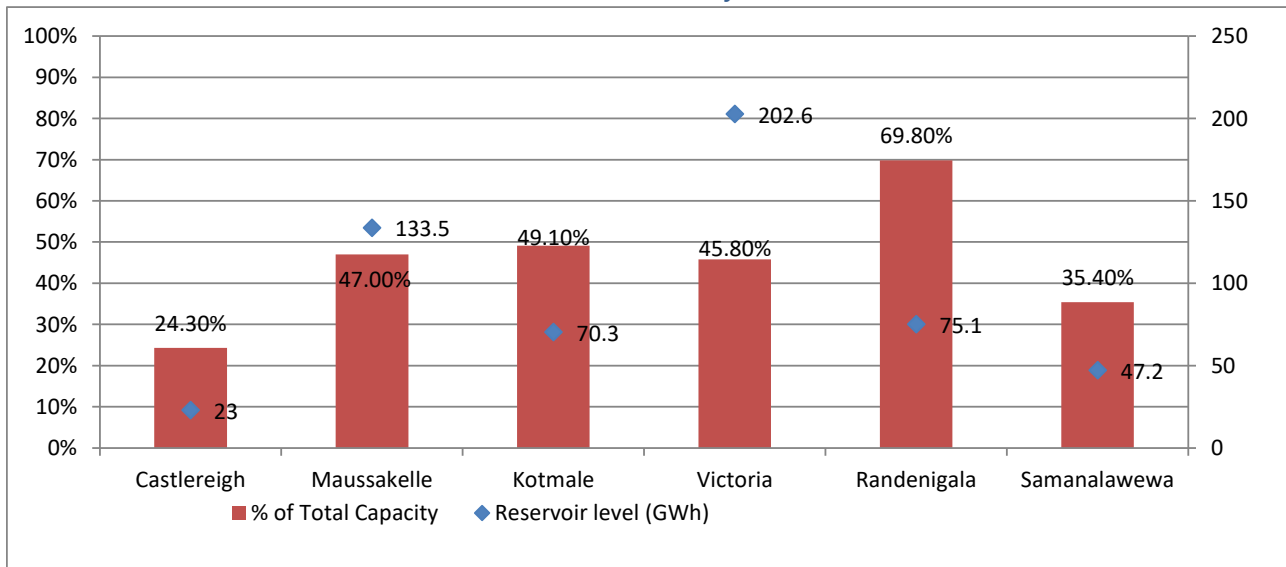
February 17, 2022



Night Peak*	2,639.7 MW
Day Peak	2,147.3 MW
Minimum Demand	1,270.8 MW

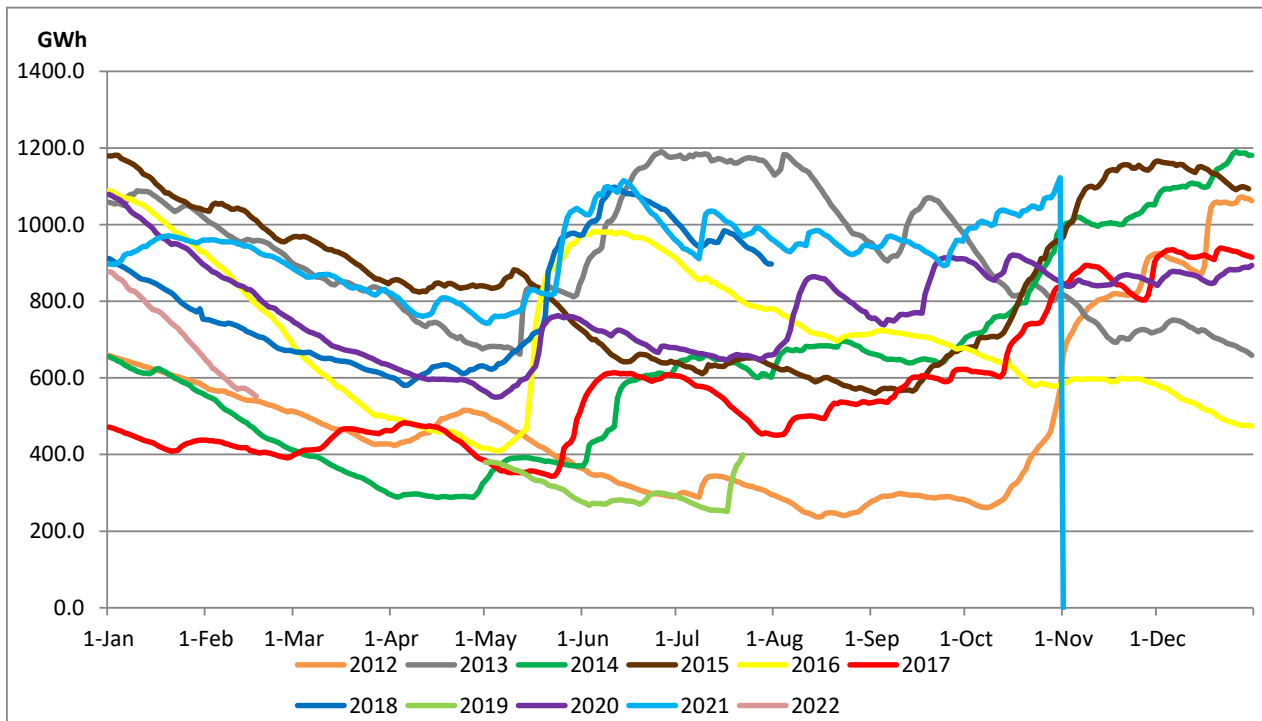
Above figures are excluding contribution from Roof Top Solar, 1MW solar, certain Wind plants and Mini Hydro plants

Reservoir Levels - as at 06.00 Hr on February 18, 2022



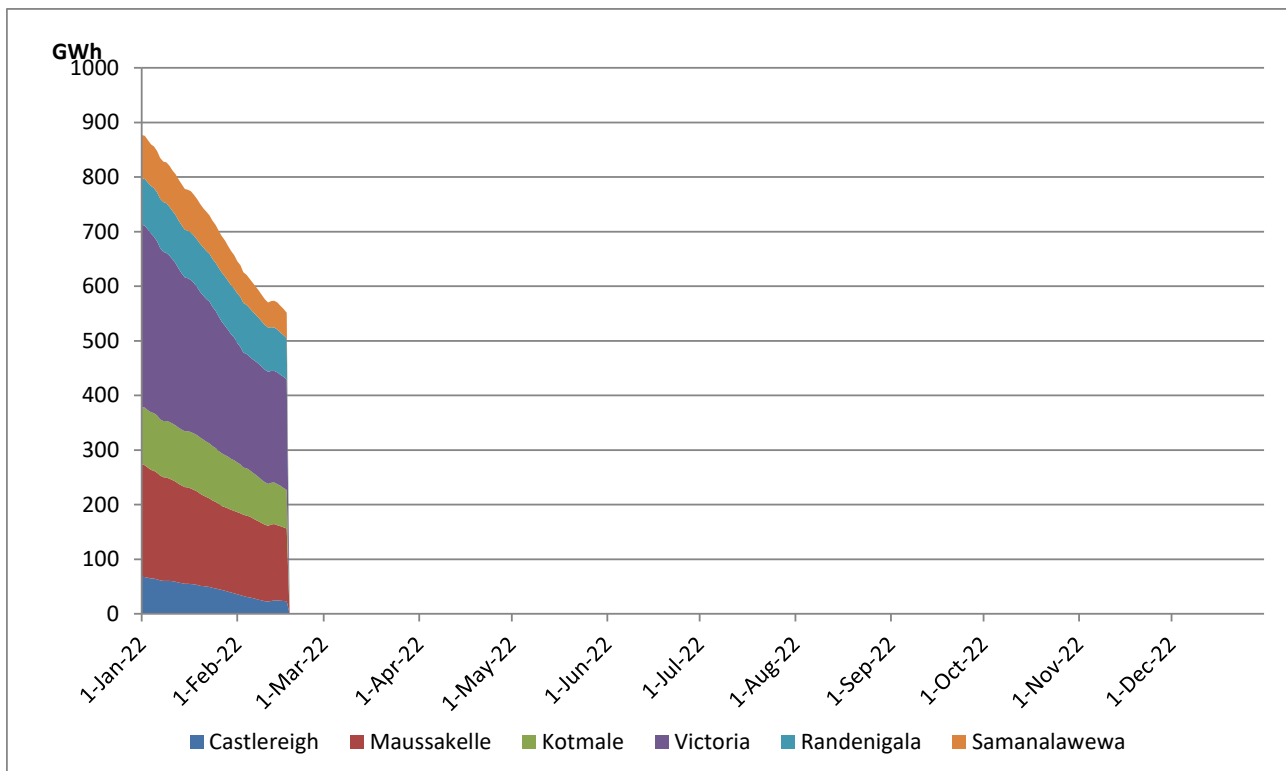
Total Reservoir Level(GWh)	551.7
% of Total capacity	45.2%

Comparison of Total Reservoir Storage Levels with Past Years

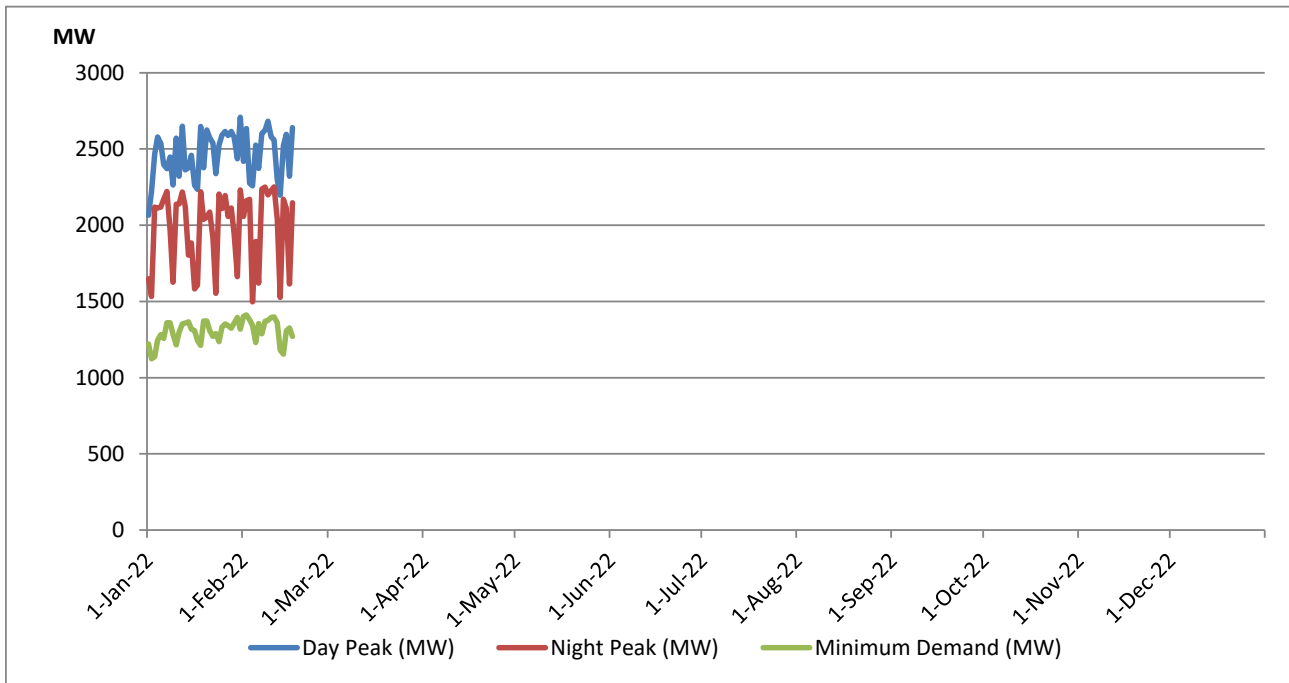


Data for 2018 and 2019 are only available for part of year.

Variation of Major Hydro Reservoir Levels in the current year (GWh)



Variation of Demand during the current year

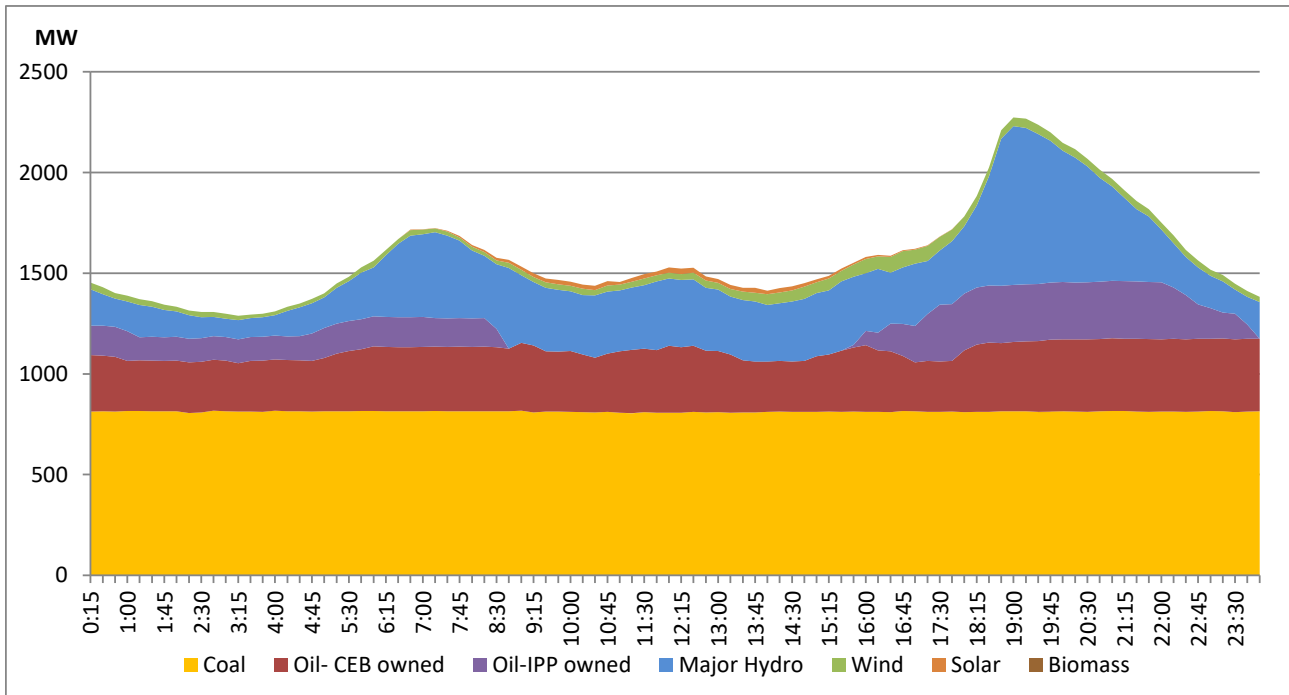


The above figures are excluding contribution from Roof Top Solar, 1MW solar, certain Wind plants and Mini Hydro plants

Daily Load Curve of the Previous day

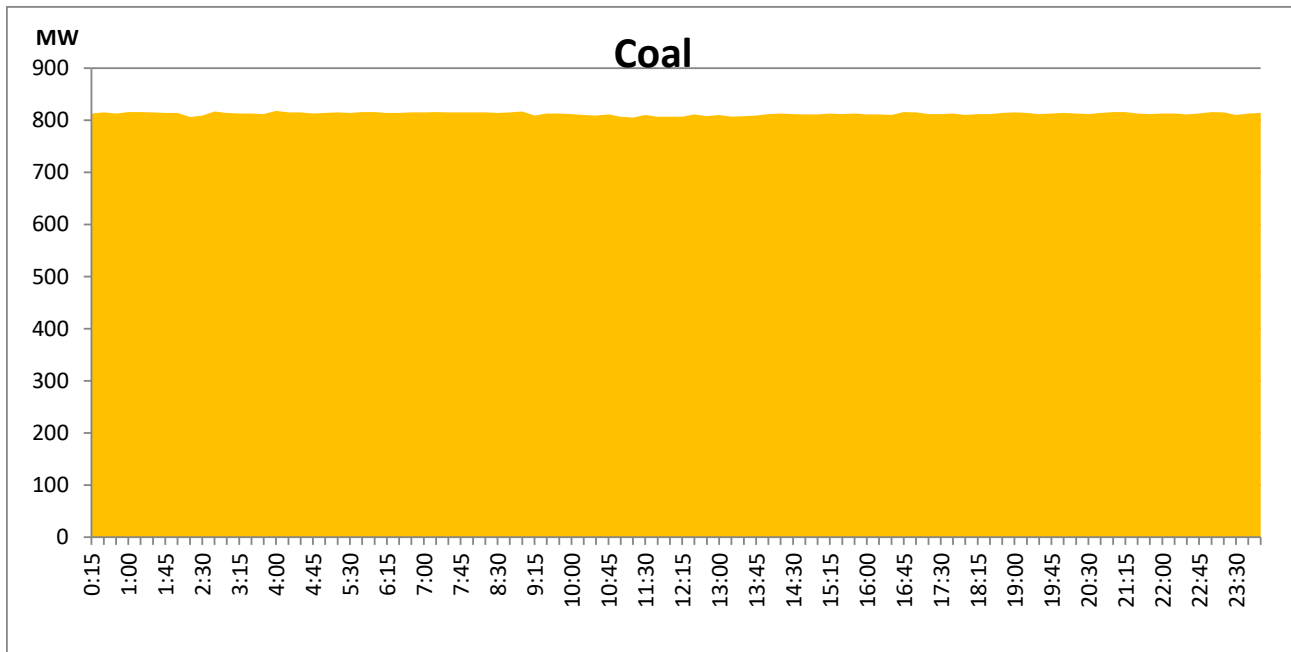
February 16, 2022

Solar and wind data is based on Telemetered Power Stations only



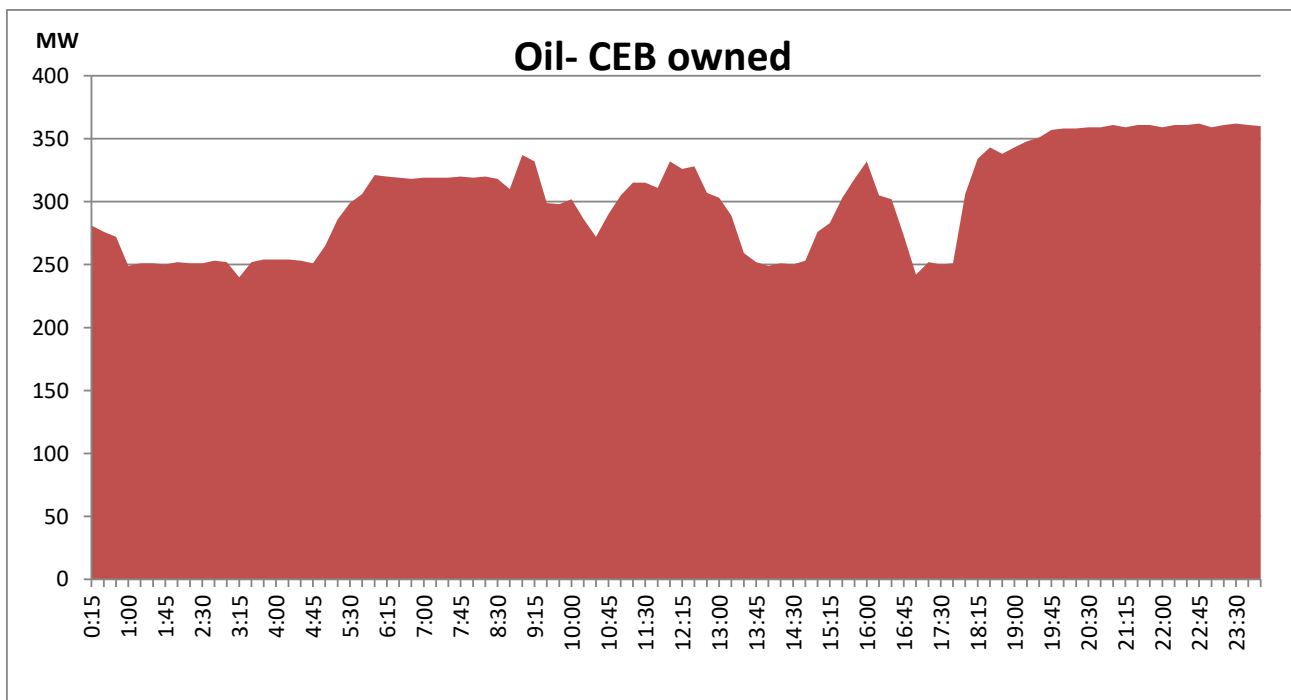
Coal Generation during the Previous day

February 16, 2022



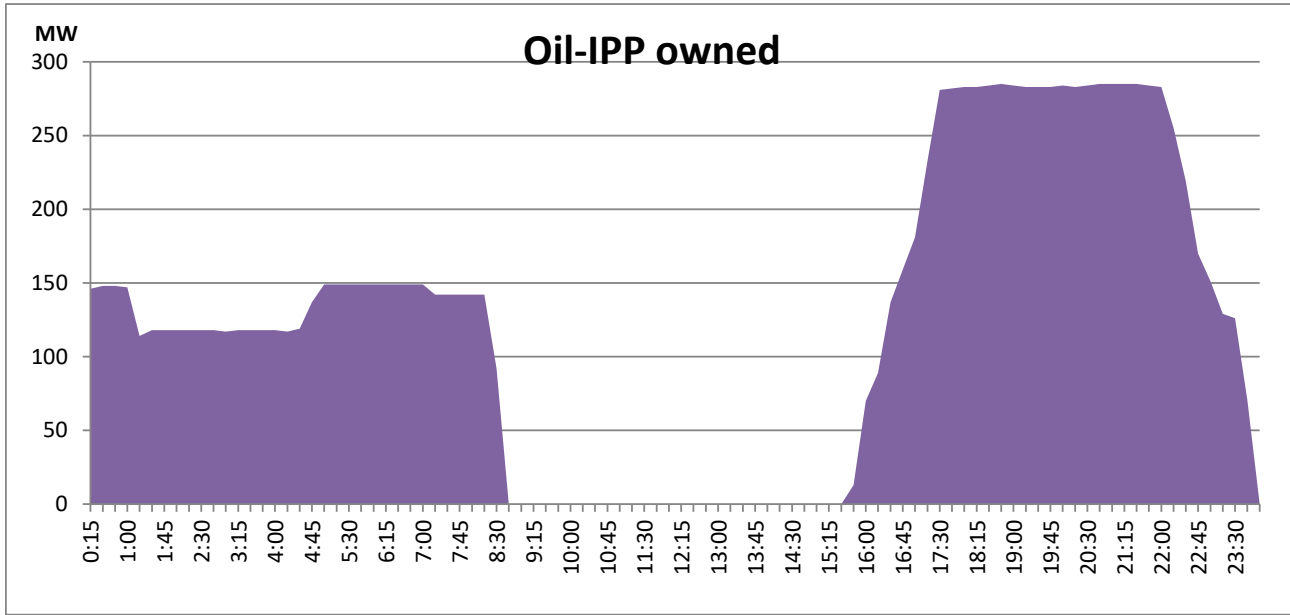
CEB Oil Plant Generation during the Previous day

February 16, 2022



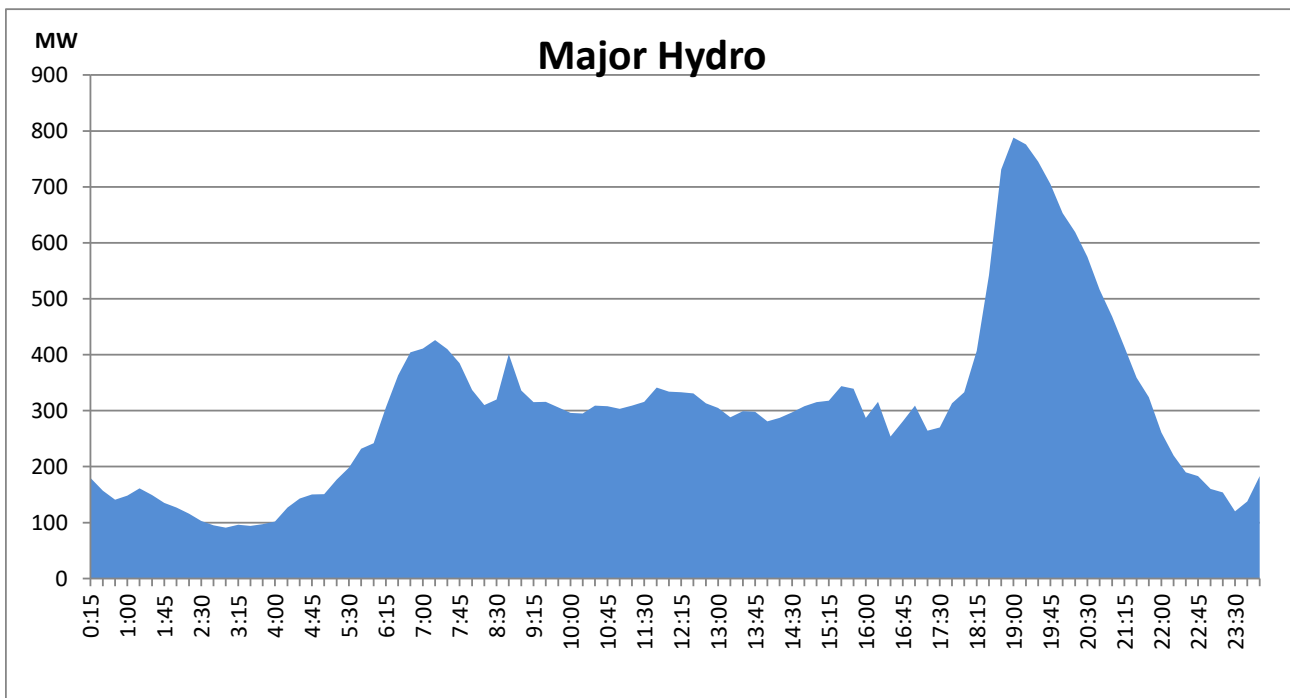
IPP Oil Plant Generation during the Previous day

February 16, 2022



Major Hydro Generation during the Previous day

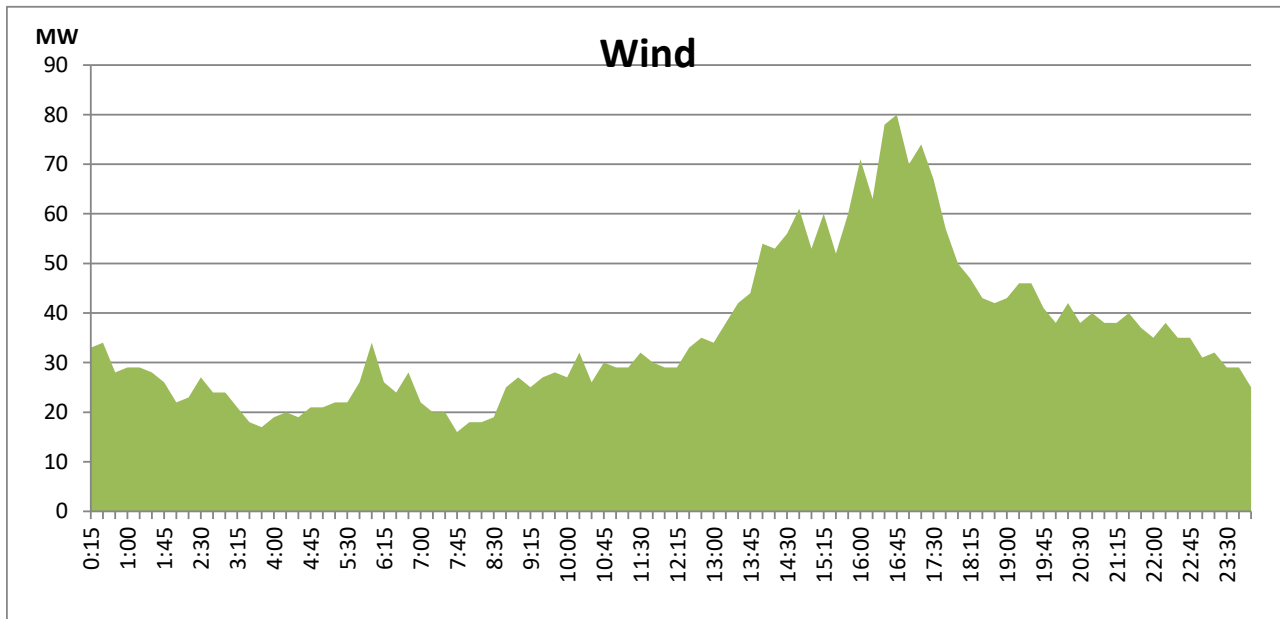
February 16, 2022



Wind Generation during the Previous day

February 16, 2022

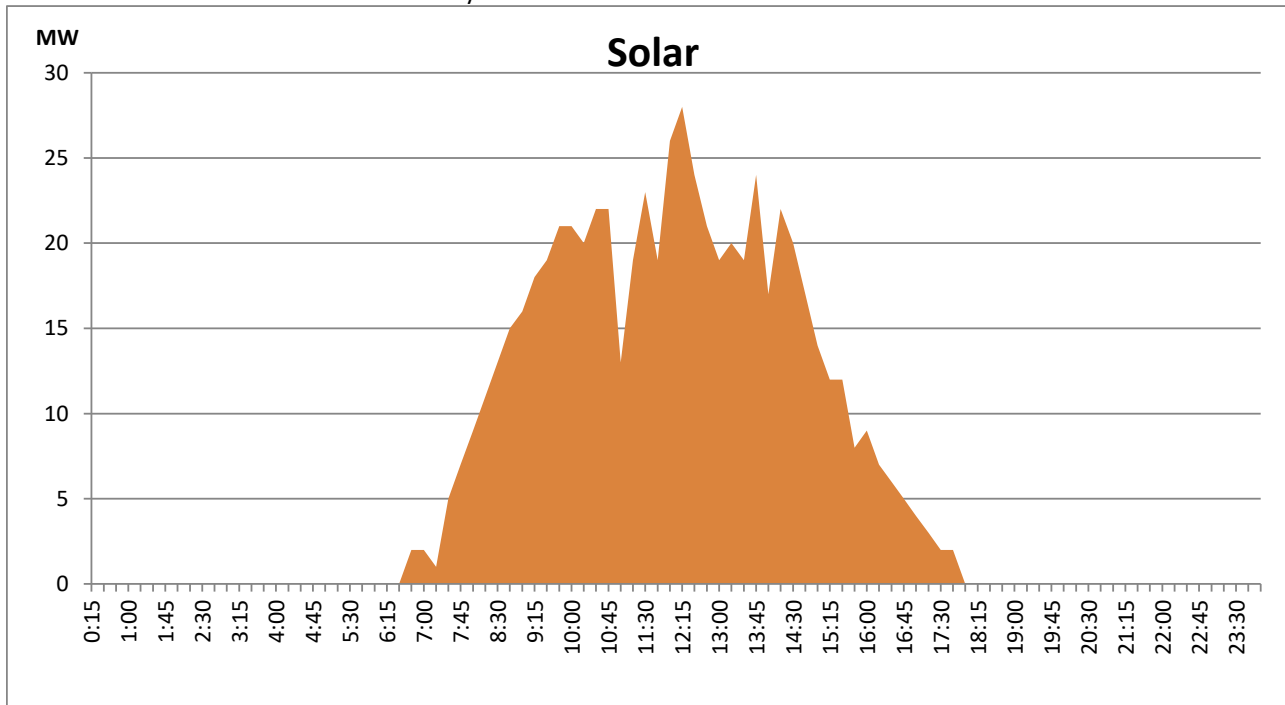
Based on Telemetered Power Stations only



Solar Generation during the Previous day

February 16, 2022

Based on Telemetered Power Stations only



Thermal Plant Fuel types

Power Station	Primary Fuel
CEB Thermal	
Sapugaskanda 1	Heavy Fuel
Sapugaskanda 2	Heavy Fuel
Kelanitissa Small Gas Turbines	Auto Diesel
GT 7 - Kelanitissa	Auto Diesel
Kelanitissa CCY	Naptha & Diesel
Lakvijaya 1	Coal
Lakvijaya 2	Coal
Lakvijaya 3	Coal
Uthuru Janani	Heavy Fuel
Barge CEB	Furnace Oil

Power Station	Primary Fuel
Private Thermal	
Sojitz - Kelanitissa	Auto Diesel
West Coast	Low Sulphur Furnace oil

Major Incidents during the day -as reported by CEB morning of

February 18, 2022

1) KCCP made forced shut down at 19:42 hrs due to lack of fuel stocks.

Dhanushka Bandara

System Control Engineer

(1) - Excluding energy contribution from Roof Top Solar, 1MW solar, certain Mini Hydro plants and Biomass plants

(2) - Excluding contribution from Roof Top Solar, 1MW solar, certain Wind plants, Mini Hydro plants and Biomass plants

(3) - Including data from 26 number of telemetered mini hydro plants (MHP) having total Installed Capacity of 129MW.

(4) - Randenigala MOL has been revised to 209 masl from 199.5 masl and Samanalawewa Spill level has been revised to 455 masl from 460 masl with effect from 01 st Feb. 2018 considering reservoir operation restrictions.

(5)- Percentage of the total capacity of Vict and Koth storage is calculated by considering downstream reservoir storage