

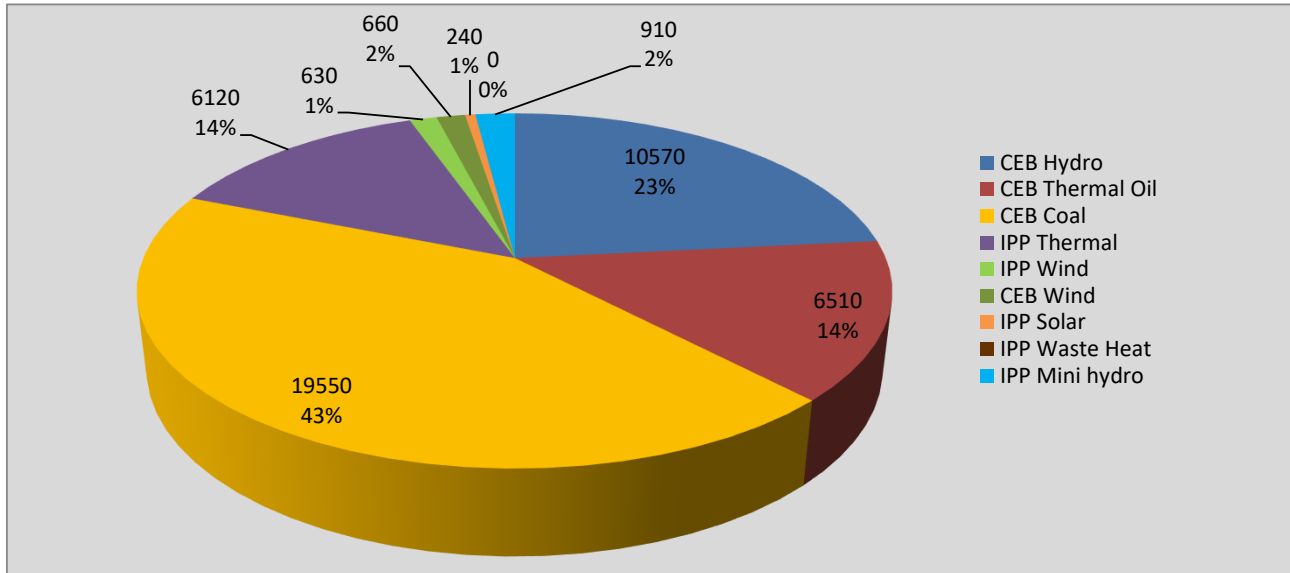
# **Generation and Reservoirs Statistics**

**February 15, 2022**



PUBLIC UTILITIES COMMISSION OF SRI LANKA

## Daily Generation Mix in MWh



**Total Generation** 45,190 MWh

Note: Above data is excluding contribution from Roof Top Solar, 1MW Solar and certain Mini Hydro plants

## Cumulative Dispatch

Note: Following data is Excluding contribution from Roof Top Solar, 1MW solar and Mini Hydro plants

### For Current Month

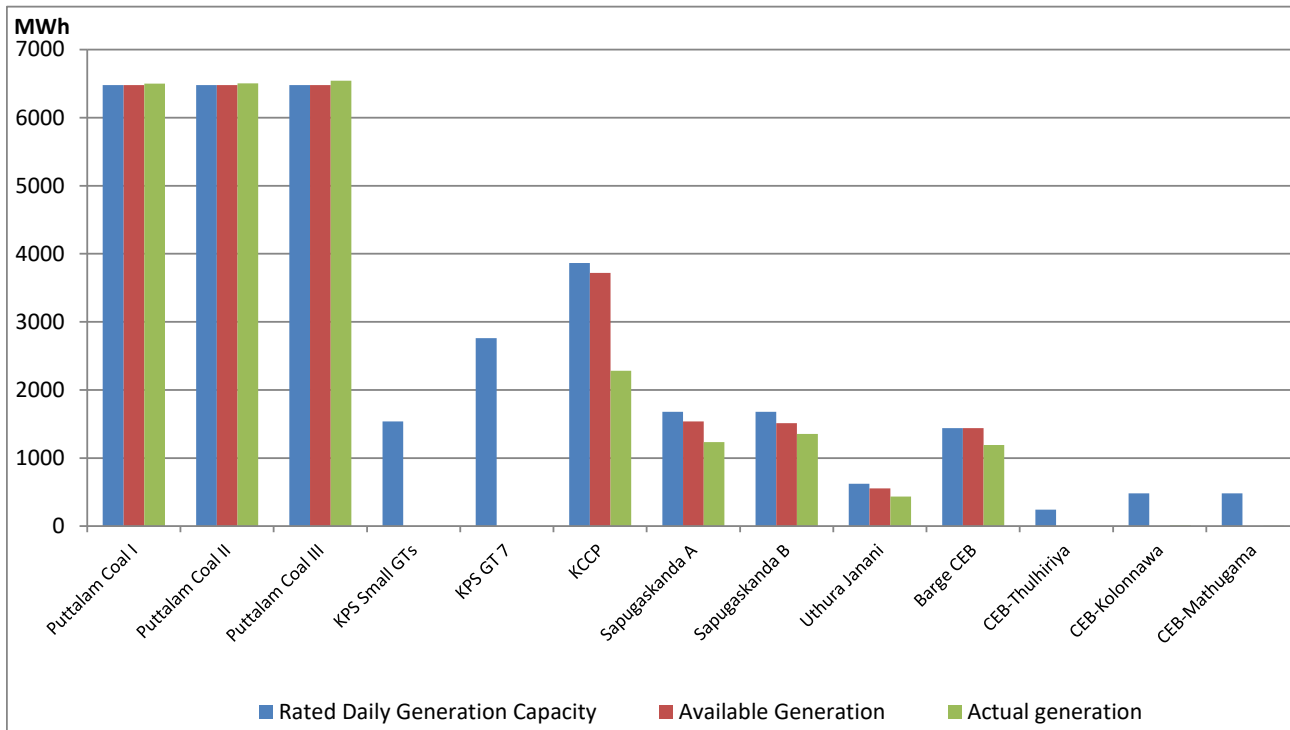
Category	Dispatch (GWh)	Percentage
CEB Hydro	155.1	23.53%
CEB Thermal Oil	91.4	13.86%
CEB Coal	282.8	42.90%
IPP Thermal	98.0	14.87%
SPP Wind	6.9	1.04%
CEB Wind	8.3	1.27%
SPP Solar	3.7	0.55%
SPP Solid Waste	1.3	0.19%
Mini Hydro	11.8	1.79%
<b>Total</b>	<b>659.2</b>	

### For Current Year

Category	Dispatch (GWh)	Percentage
CEB Hydro	562.4	28.13%
CEB Thermal Oil	335.5	16.78%
CEB Coal	690.1	34.51%
IPP Thermal	302.1	15.11%
SPP Wind	22.2	1.11%
CEB Wind	26.4	1.32%
SPP Solar	11.6	0.58%
SPP Solid Waste	9.4	0.47%
Mini Hydro	40.0	2.00%
<b>Total</b>	<b>1,999.4</b>	

## CEB owned Thermal Plant Dispatch

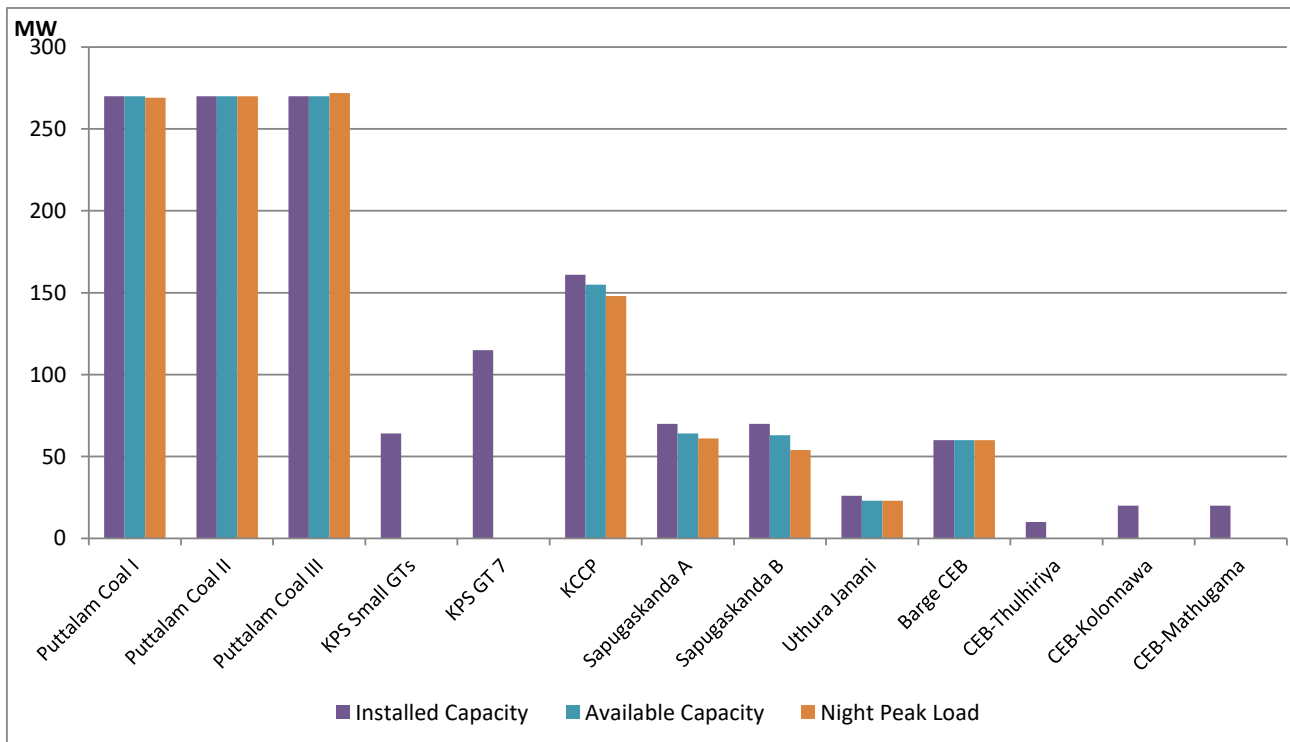
February 15, 2022



Available Generation is estimated based on plant availability at 6.00am on

February 16, 2022

## CEB owned Thermal Plant Loading at the Night Peak



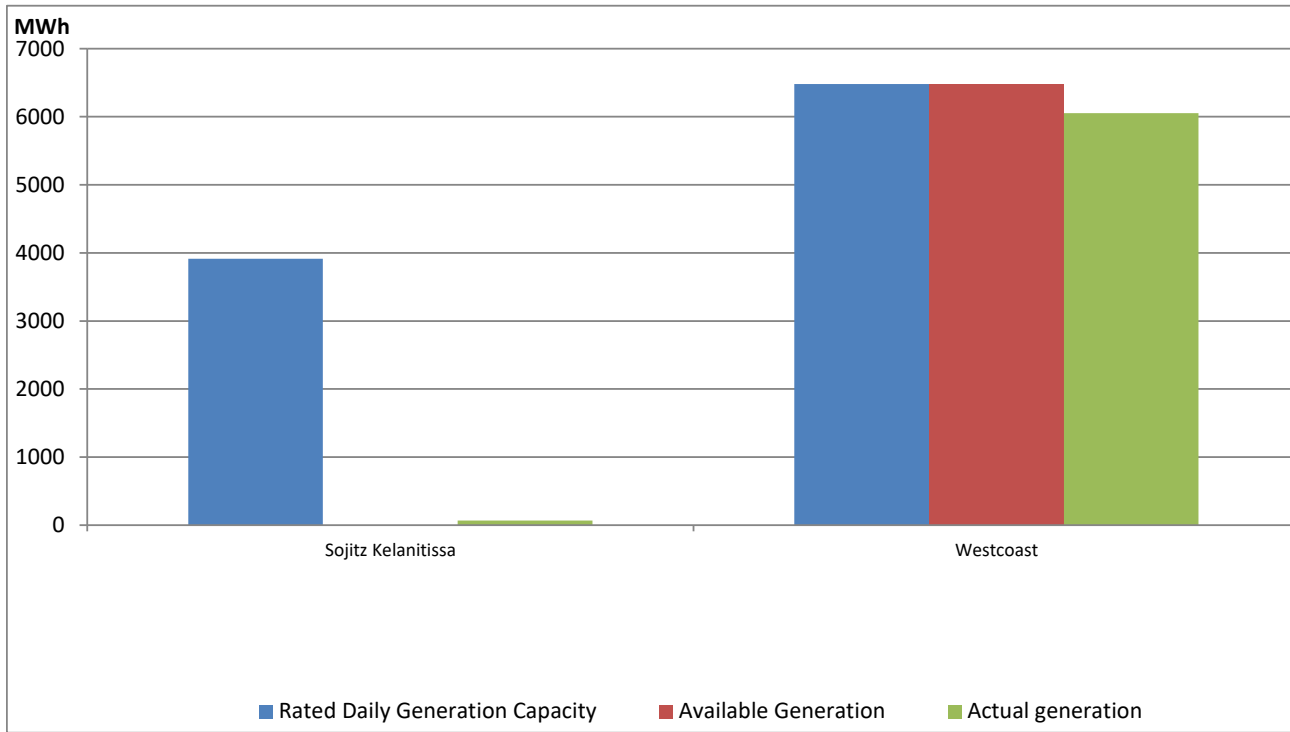
Note- Plant availability is recorded at 6.00 am on

February 16, 2022

## IPP owned Thermal Plant Dispatch

February 15, 2022

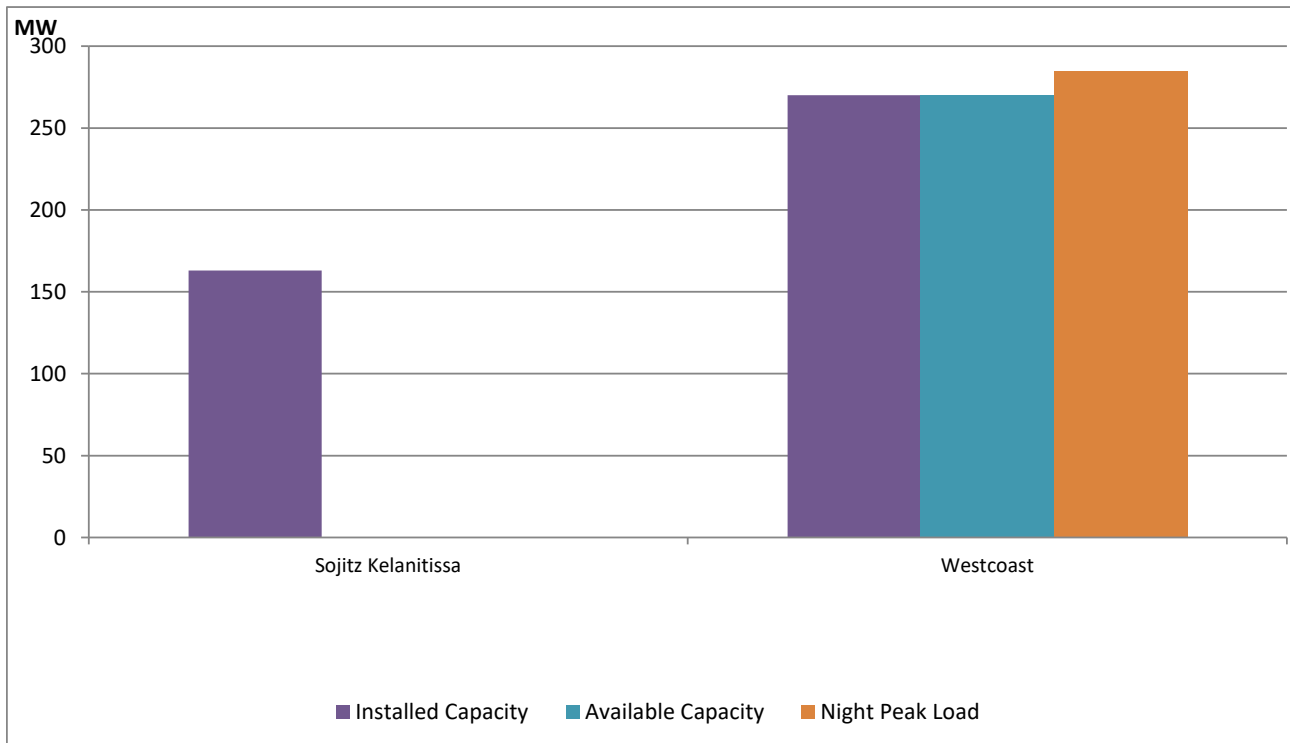
ACE Embilipitiya, ACE Matara, Asia Power, V Power Pallekale, Vpower Galle, V Power Horana, Vpower Hambantota, Vpower Valachchena and Altaqa Mahiyanganaya are not available due to expiration of PPAs



Available Generation is estimated based on plant availability at 6.00am on

February 16, 2022

## IPP owned Thermal Plant Loading at the Night Peak

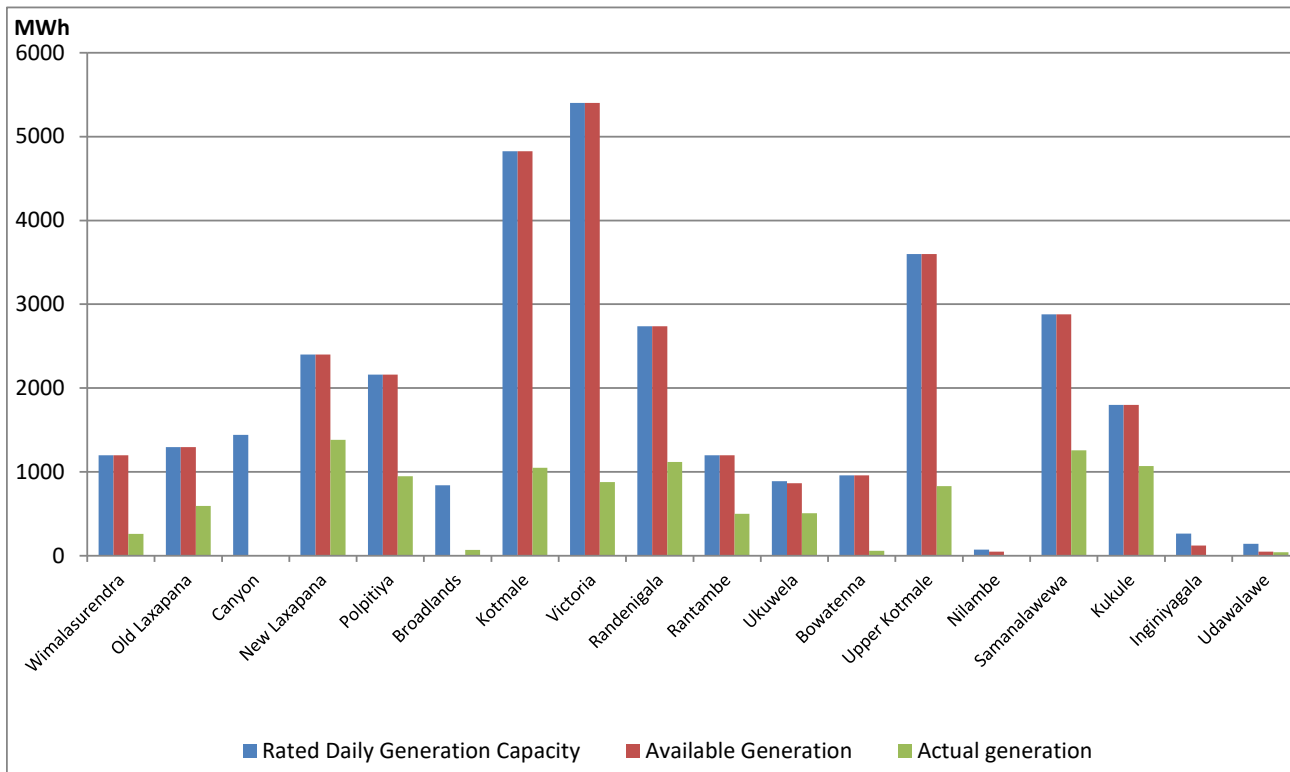


Note- Plant availability is recorded at 6.00 am on

February 16, 2022

## Major Hydro Plant Dispatch

February 15, 2022

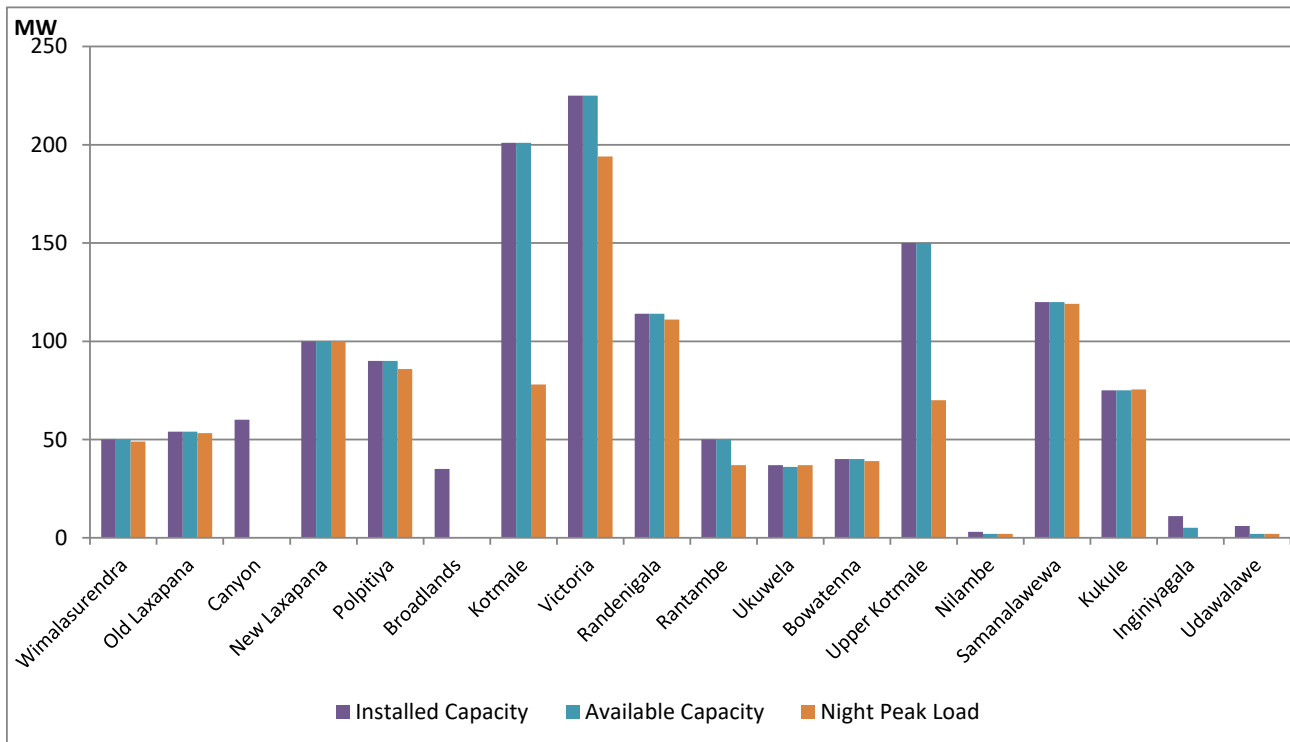


Available Generation is estimated based on plant availability at 6.00am on  
Broadlands power plant is operating in the Commissioning Stage

February 16, 2022

## Major Hydro Plant Loading at Night Peak

February 15, 2022



Note- Plant availability is recorded at 6.00 am on  
Broadlands power plant is operating in the Commissioning Stage

February 16, 2022

## Summary of Major Plant performance

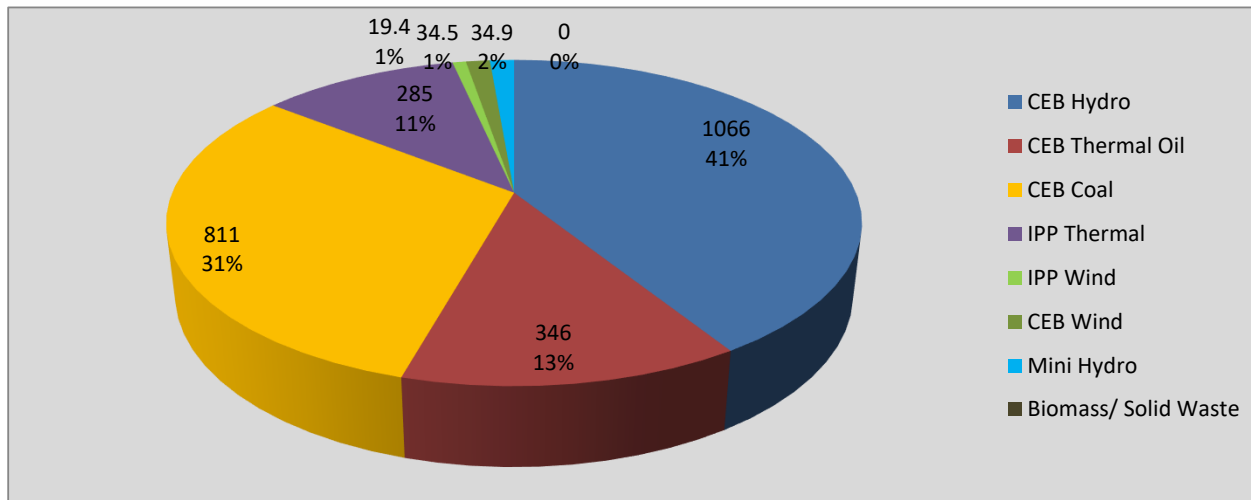
Plant	Installed Capacity (MW)	Plant Availability (MW)	Night peak Load (MW)	Plant Dispatch (MWh)
Wimalasurendra	50	50	49	259
Old Laxapana	54	54	53	593
Canyon	60	0	0	0
New Laxapana	100	100	100	1,381
Polpitiya	90	90	86	950
Broadlands	35	0	0	69
Kotmale	201	201	78	1,050
Victoria	225	225	194	880
Randenigala	114	114	111	1,117
Rantambe	50	50	37	500
Ukuwela	37	36	37	506
Bowatenna	40	40	39	60
Upper Kotmale	150	150	70	829
Nilambe	3	2	2	8
Samanalawewa	120	120	119	1,258
Kukule	75	75	76	1,069
Inginiyagala	11	5	0	0
Udawalawe	6	2	2	41
Puttalam Coal I	270	270	269	6,500
Puttalam Coal II	270	270	270	6,504
Puttalam Coal III	270	270	272	6,544
KPS Small GTs	64	0	0	0
KPS GT 7	115	0	0	0
KCCP	161	155	148	2,281
Sapugaskanda A	70	64	61	1,234
Sapugaskanda B	70	63	54	1,355
Uthura Janani	26	23	23	435
Barge CEB	60	60	60	1,192
CEB-Thulhiriya	10	0	0	0
CEB-Kolonnawa	20	0	0	12
CEB-Mathugama	20	0	0	3
Sojitz Kelanitissa	163	0	0	68
West Coast	270	270	285	6,052
Total	3,280	2,759	2,583	45,181

Plant availability is the availability recorded at 6 am on

February 16, 2022

# Contribution to the Night Peak in MW

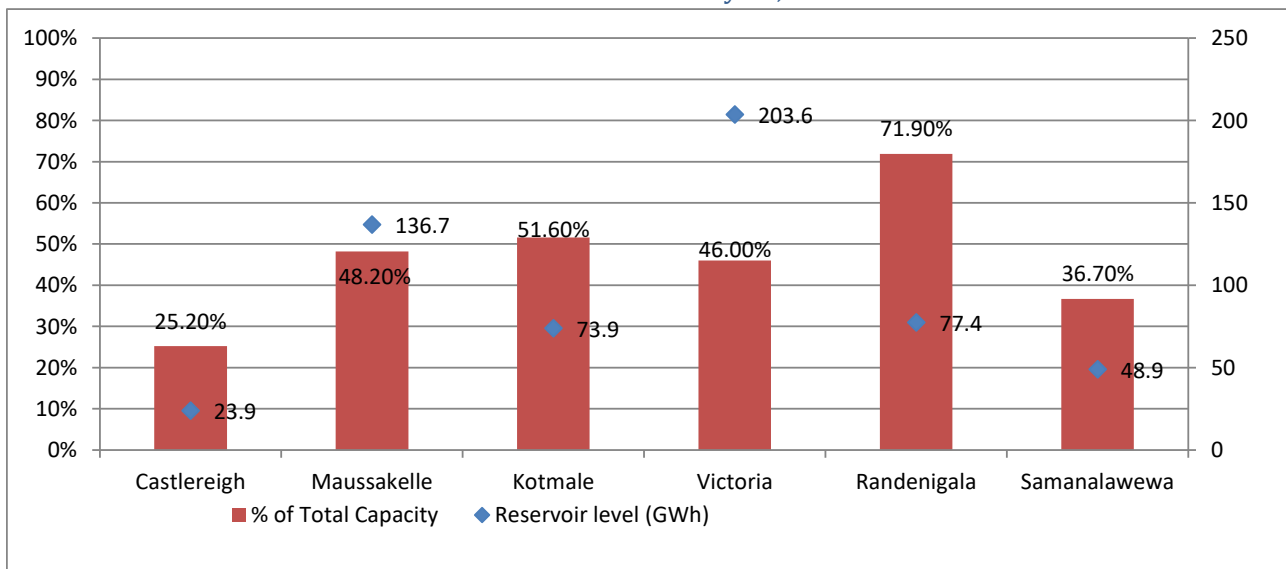
February 15, 2022



Night Peak*	2,596.4 MW
Day Peak	2,111.6 MW
Minimum Demand	1,307.6 MW

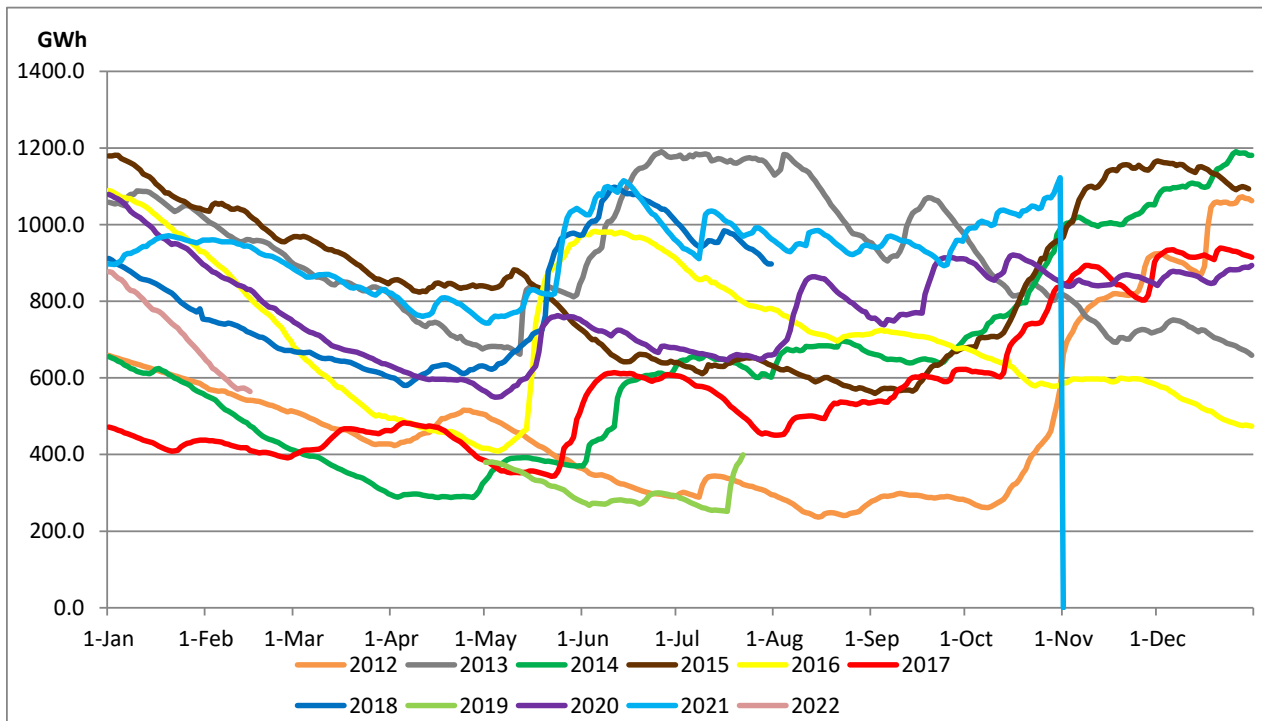
Above figures are excluding contribution from Roof Top Solar, 1MW solar, certain Wind plants and Mini Hydro plants

## Reservoir Levels - as at 06.00 Hr on February 16, 2022



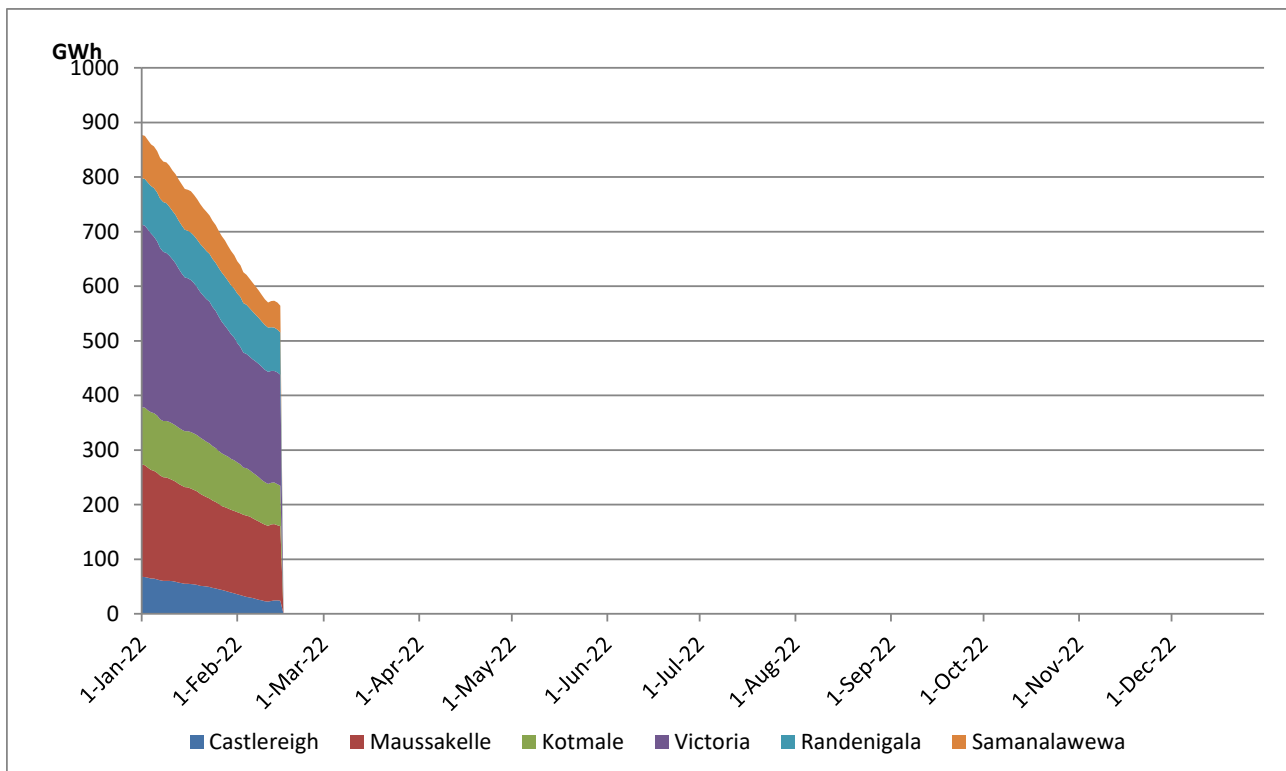
Total Reservoir Level(GWh)	564.4
% of Total capacity	46.6%

## Comparison of Total Reservoir Storage Levels with Past Years



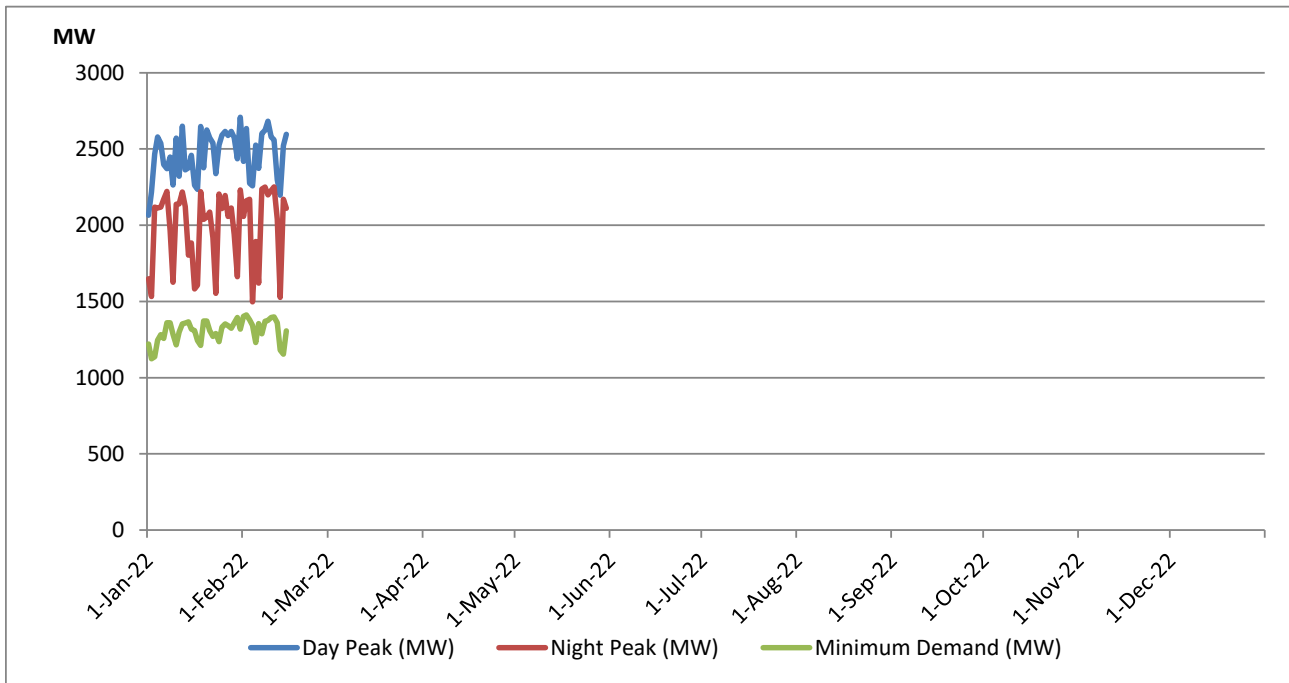
Data for 2018 and 2019 are only available for part of year.

## Variation of Major Hydro Reservoir Levels in the current year (GWh)





## Variation of Demand during the current year

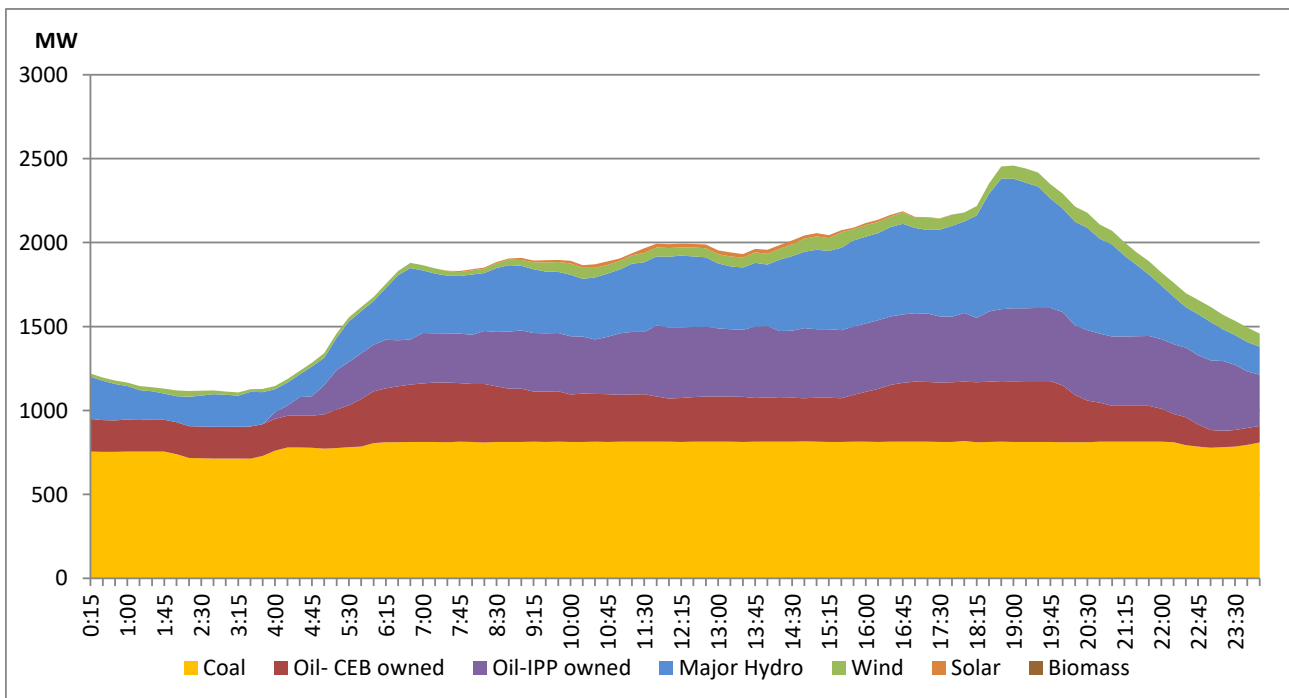


The above figures are excluding contribution from Roof Top Solar, 1MW solar, certain Wind plants and Mini Hydro plants

## Daily Load Curve of the Previous day

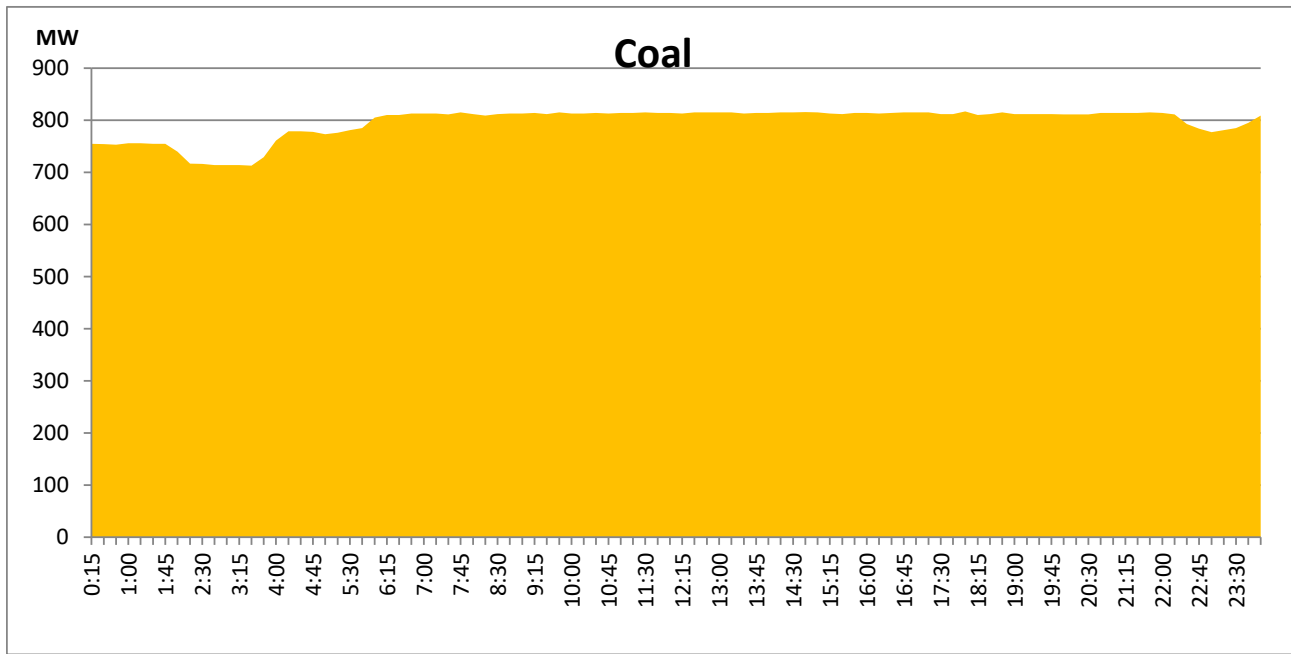
February 14, 2022

Solar and wind data is based on Telemetered Power Stations only



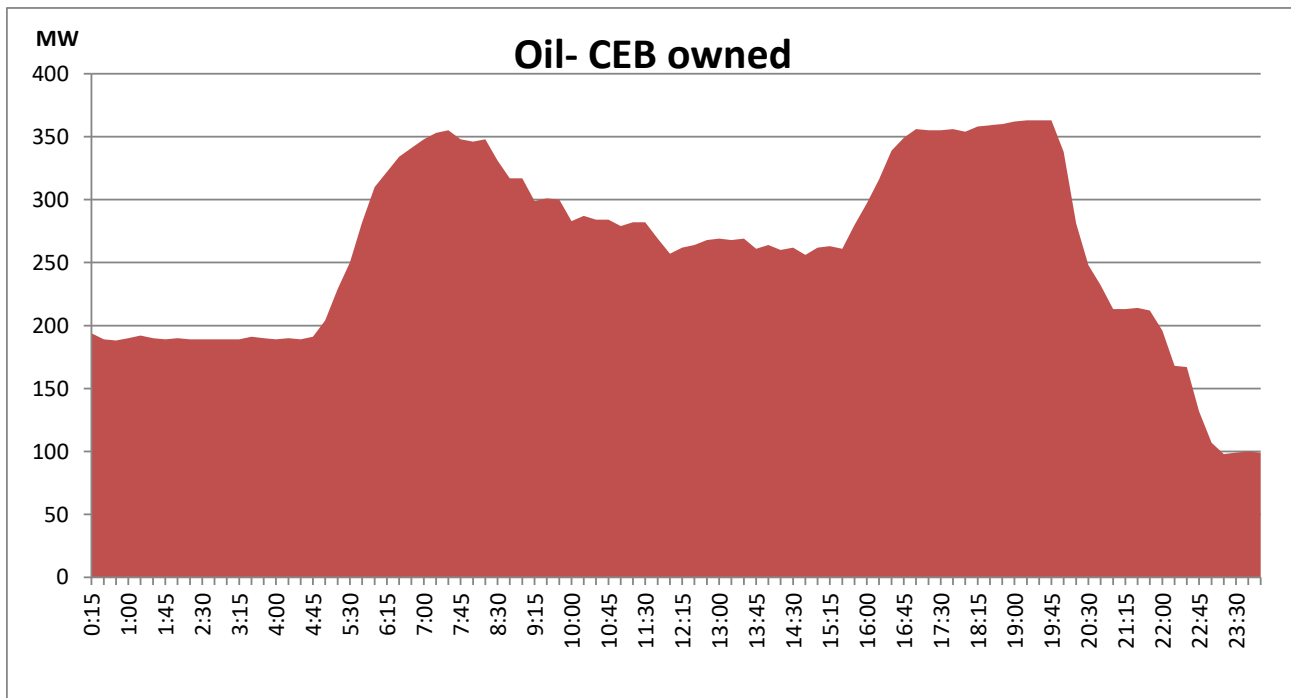
## Coal Generation during the Previous day

February 14, 2022



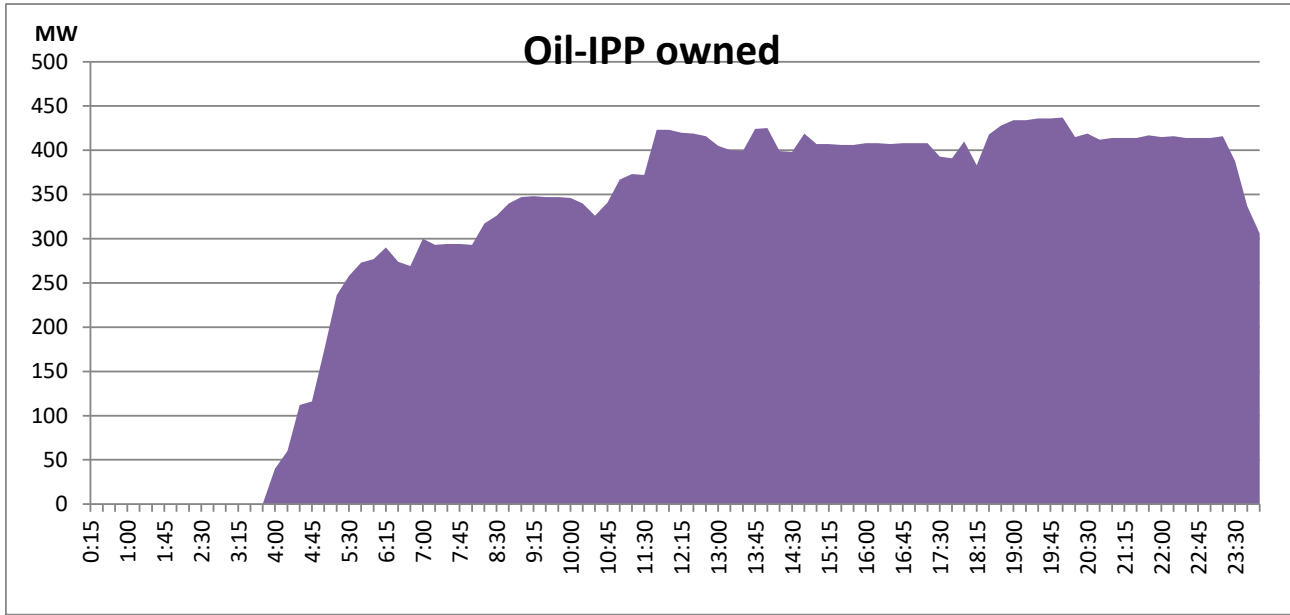
## CEB Oil Plant Generation during the Previous day

February 14, 2022



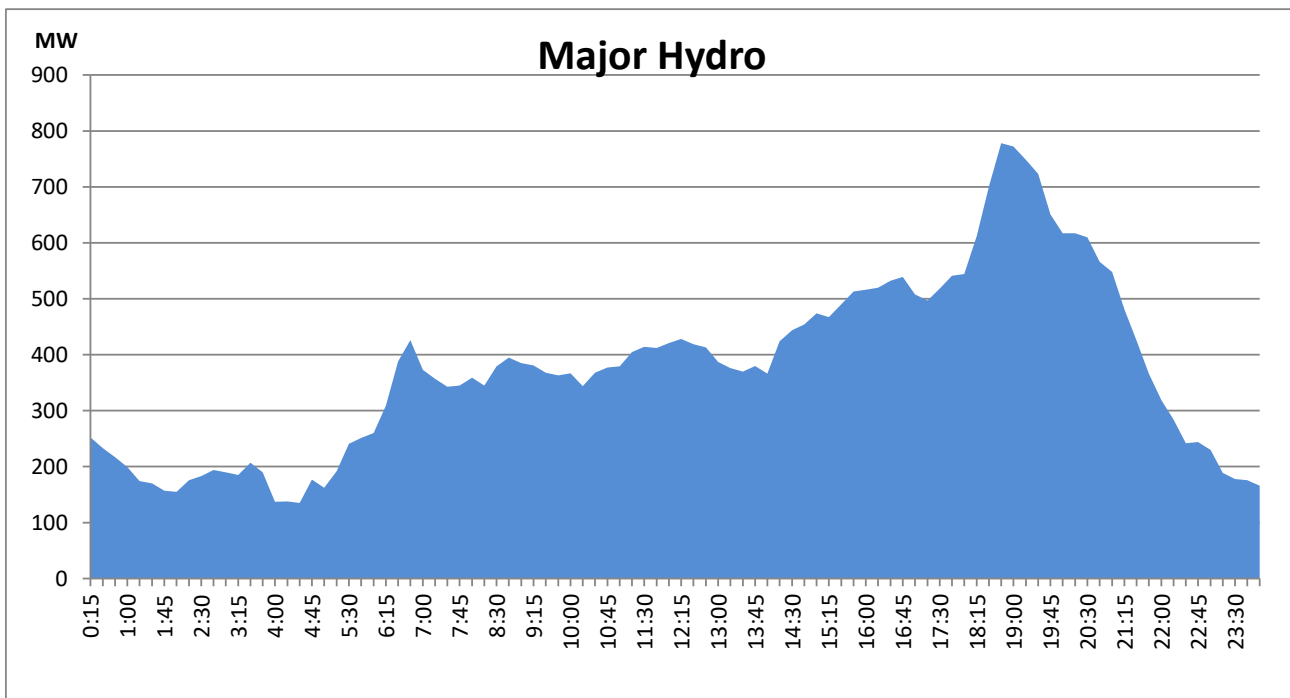
## IPP Oil Plant Generation during the Previous day

February 14, 2022



## Major Hydro Generation during the Previous day

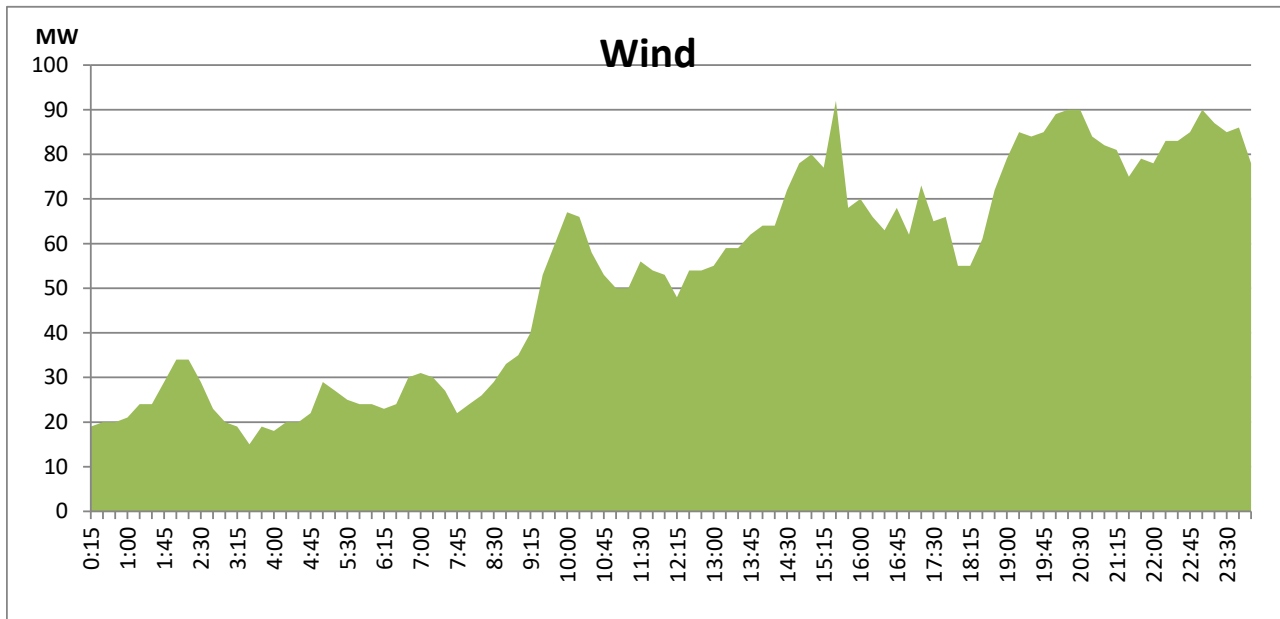
February 14, 2022



## Wind Generation during the Previous day

February 14, 2022

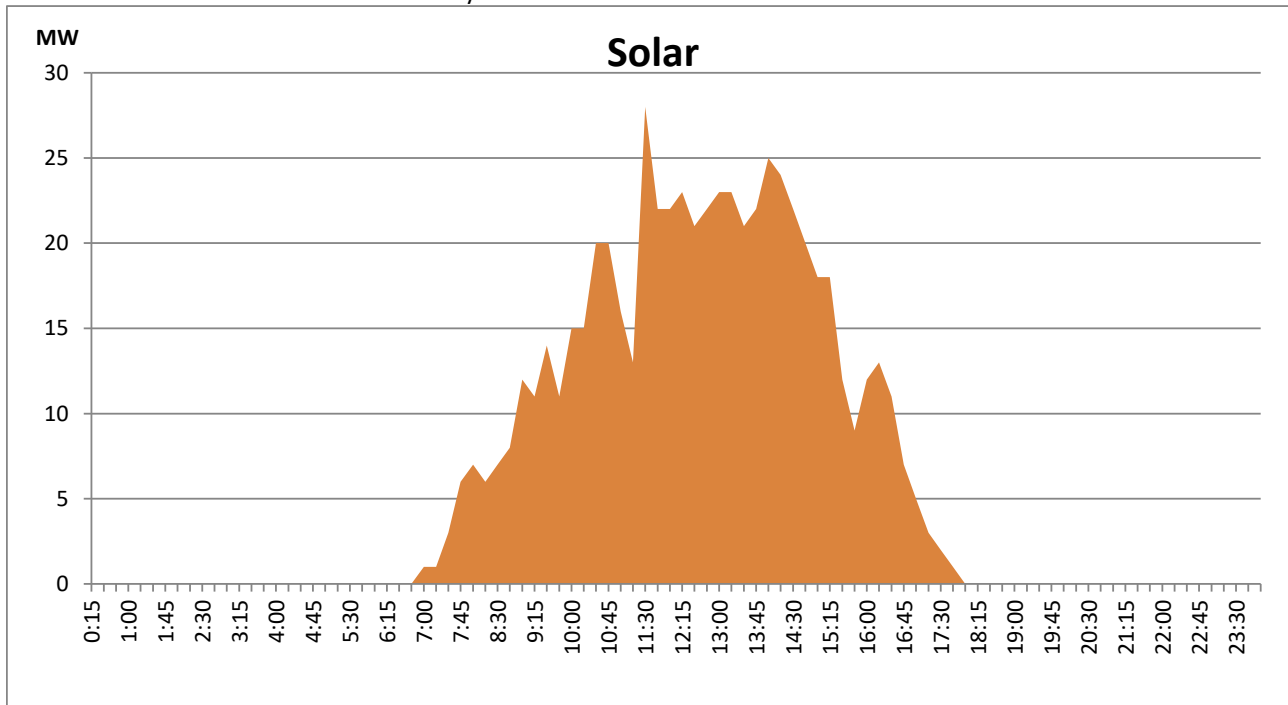
Based on Telemetered Power Stations only



## Solar Generation during the Previous day

February 14, 2022

Based on Telemetered Power Stations only



**Thermal Plant Fuel types**

<b>Power Station</b>	<b>Primary Fuel</b>
<b>CEB Thermal</b>	
<b>Sapugaskanda 1</b>	Heavy Fuel
<b>Sapugaskanda 2</b>	Heavy Fuel
<b>Kelanitissa Small Gas Turbines</b>	Auto Diesel
<b>GT 7 - Kelanitissa</b>	Auto Diesel
<b>Kelanitissa CCY</b>	Naptha & Diesel
<b>Lakvijaya 1</b>	Coal
<b>Lakvijaya 2</b>	Coal
<b>Lakvijaya 3</b>	Coal
<b>Uthuru Janani</b>	Heavy Fuel
<b>Barge CEB</b>	Furnace Oil

<b>Power Station</b>	<b>Primary Fuel</b>
<b>Private Thermal</b>	
<b>Sojitz - Kelanitissa</b>	Auto Diesel
<b>West Coast</b>	Low Sulphur Furnace oil

**Major Incidents during the day -as reported by CEB morning of**

**February 16, 2022**

Major Incidents