

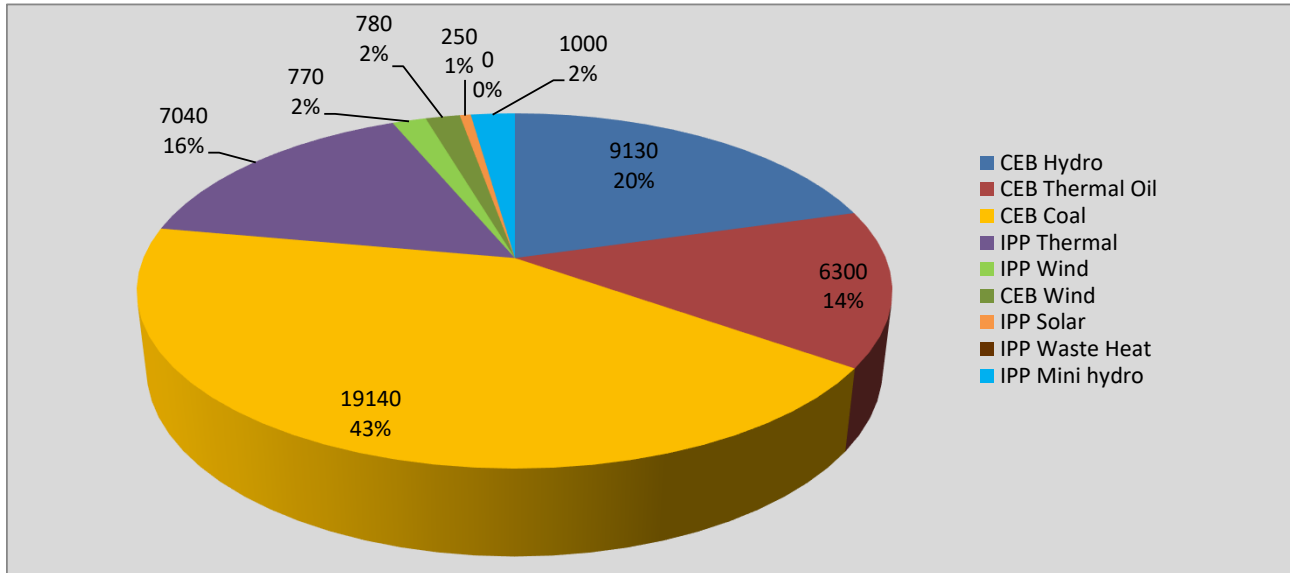
Generation and Reservoirs Statistics

February 14, 2022



PUBLIC UTILITIES COMMISSION OF SRI LANKA

Daily Generation Mix in MWh



Total Generation **44,410 MWh**

Note: Above data is excluding contribution from Roof Top Solar, 1MW Solar and certain Mini Hydro plants

Cumulative Dispatch

Note: Following data is Excluding contribution from Roof Top Solar, 1MW solar and Mini Hydro plants

For Current Month

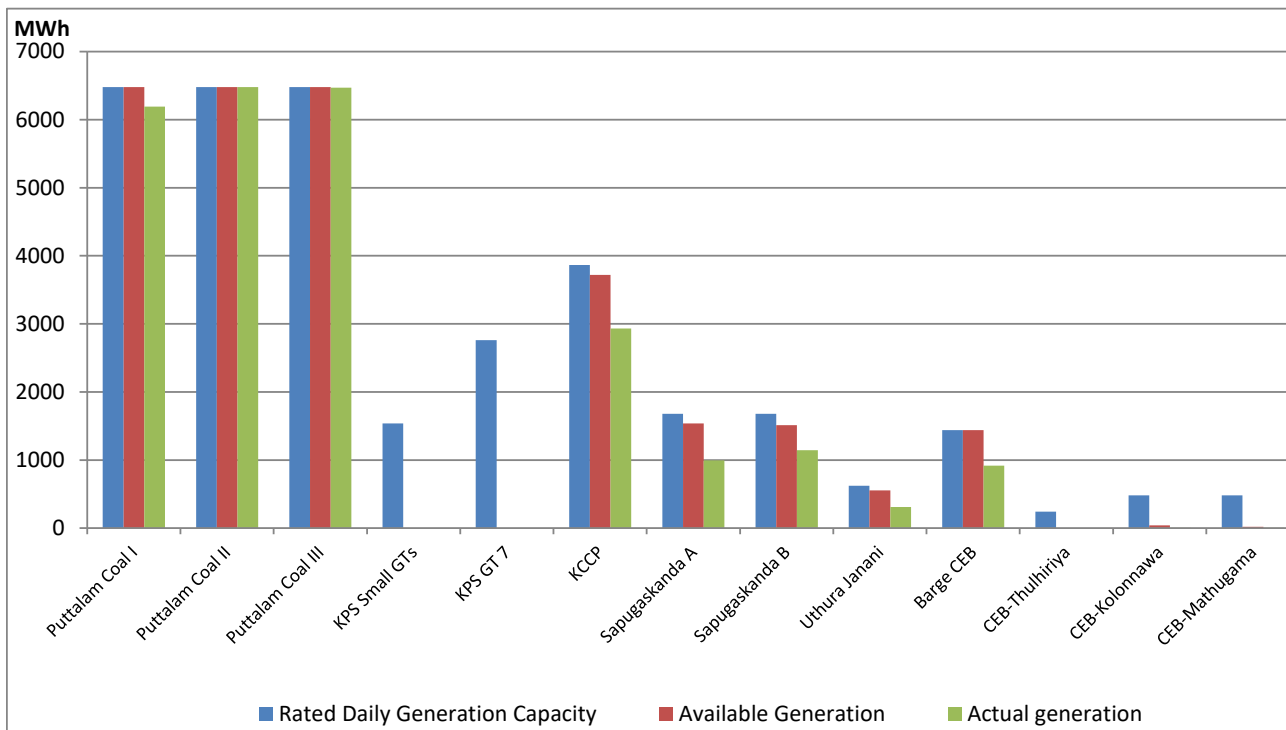
Category	Dispatch (GWh)	Percentage
CEB Hydro	144.5	23.54%
CEB Thermal Oil	84.8	13.82%
CEB Coal	263.3	42.87%
IPP Thermal	91.9	14.97%
SPP Wind	6.3	1.02%
CEB Wind	7.7	1.25%
SPP Solar	3.4	0.56%
SPP Solid Waste	1.3	0.21%
Mini Hydro	10.9	1.77%
Total	614.0	

For Current Year

Category	Dispatch (GWh)	Percentage
CEB Hydro	551.8	28.24%
CEB Thermal Oil	329.0	16.83%
CEB Coal	670.5	34.31%
IPP Thermal	296.0	15.15%
SPP Wind	21.6	1.10%
CEB Wind	25.8	1.32%
SPP Solar	11.3	0.58%
SPP Solid Waste	9.4	0.48%
Mini Hydro	39.1	2.00%
Total	1,954.2	

CEB owned Thermal Plant Dispatch

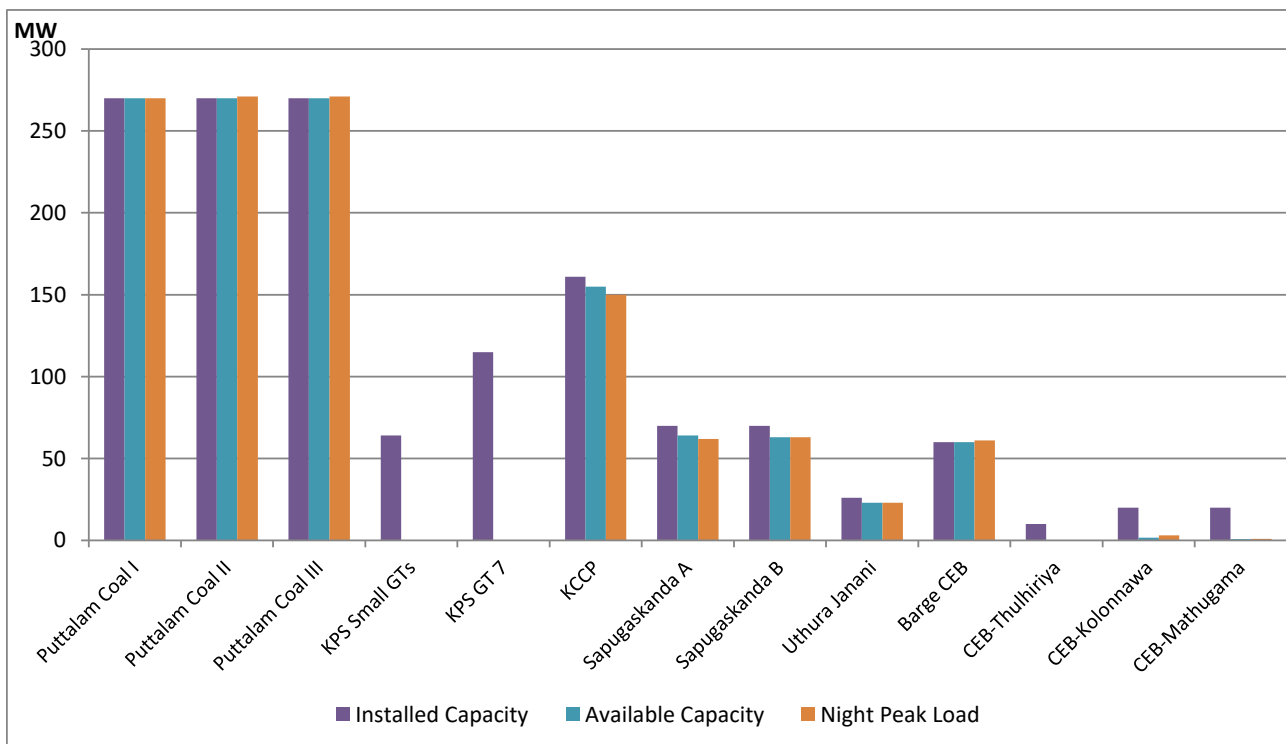
February 14, 2022



Available Generation is estimated based on plant availability at 6.00am on

February 15, 2022

CEB owned Thermal Plant Loading at the Night Peak



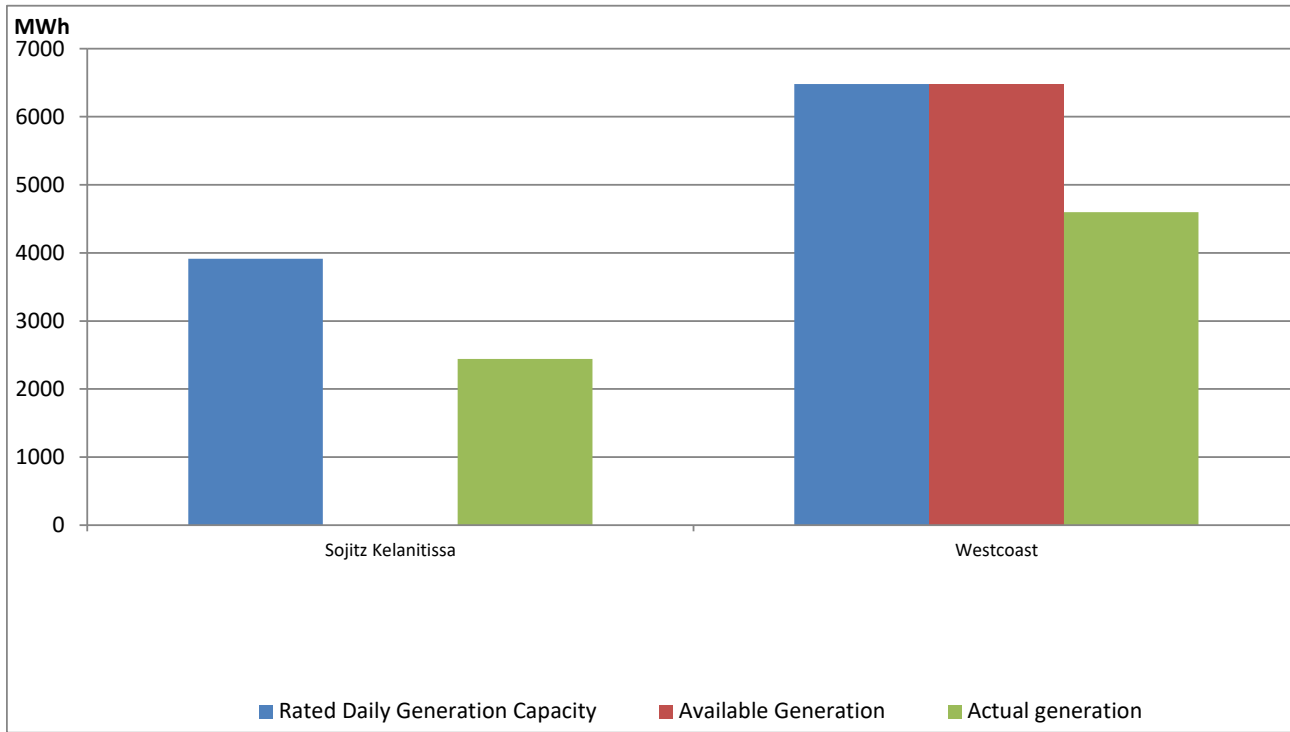
Note- Plant availability is recorded at 6.00 am on

February 15, 2022

IPP owned Thermal Plant Dispatch

February 14, 2022

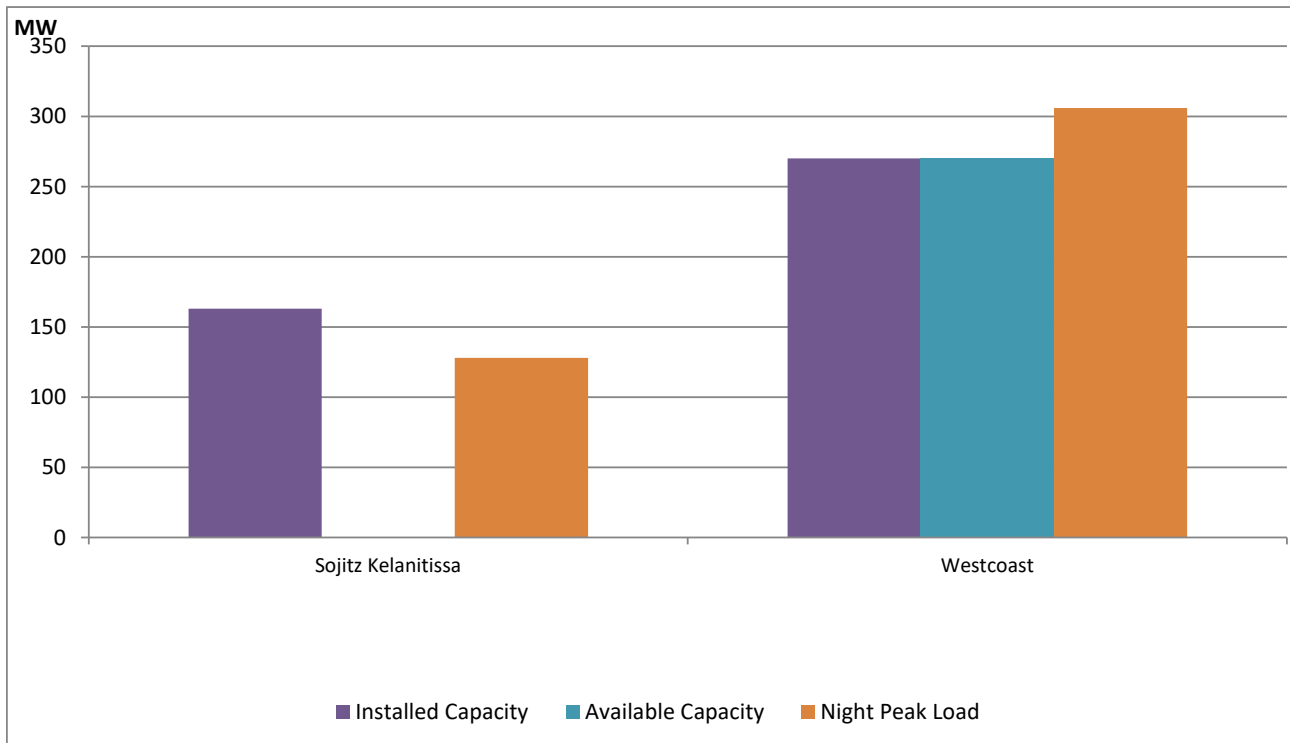
ACE Embilipitiya, ACE Matara, Asia Power, V Power Pallekale, Vpower Galle, V Power Horana, Vpower Hambantota, Vpower Valachchena and Altaqa Mahiyanganaya are not available due to expiration of PPAs



Available Generation is estimated based on plant availability at 6.00am on

February 15, 2022

IPP owned Thermal Plant Loading at the Night Peak

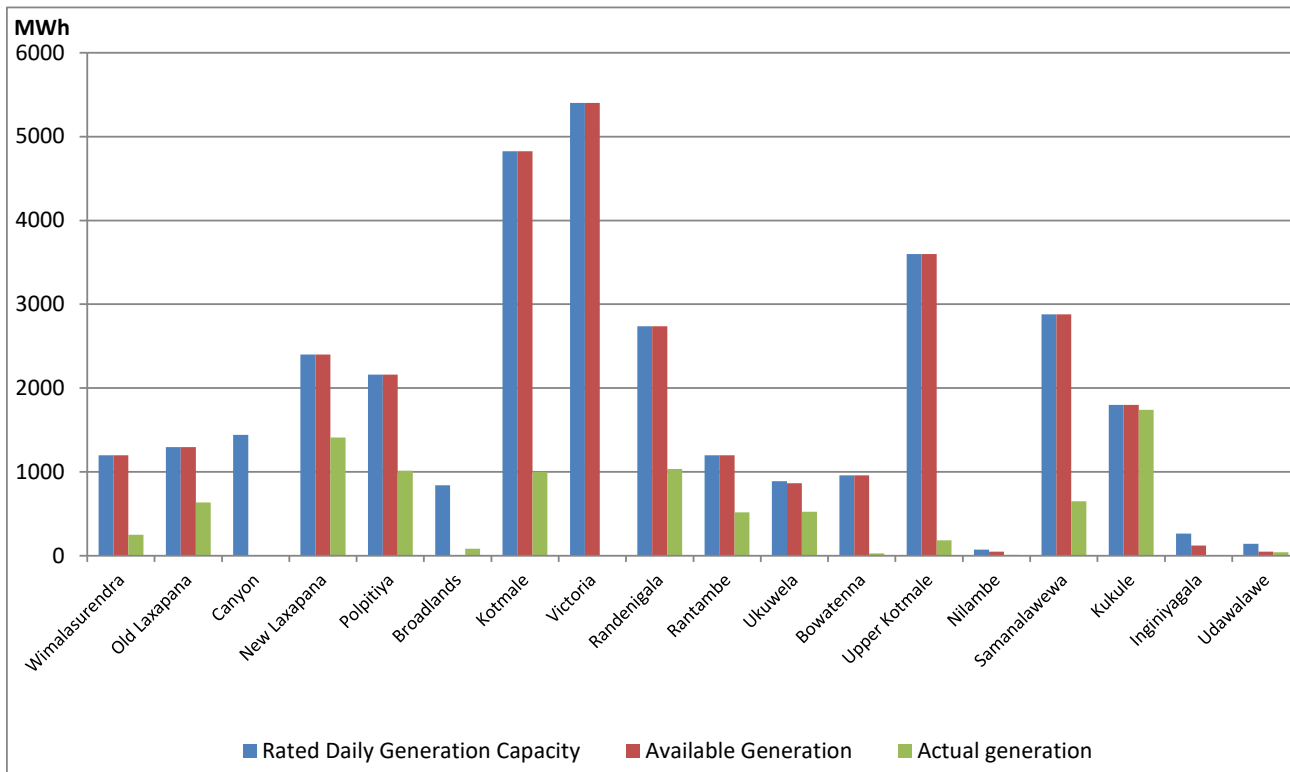


Note- Plant availability is recorded at 6.00 am on

February 15, 2022

Major Hydro Plant Dispatch

February 14, 2022

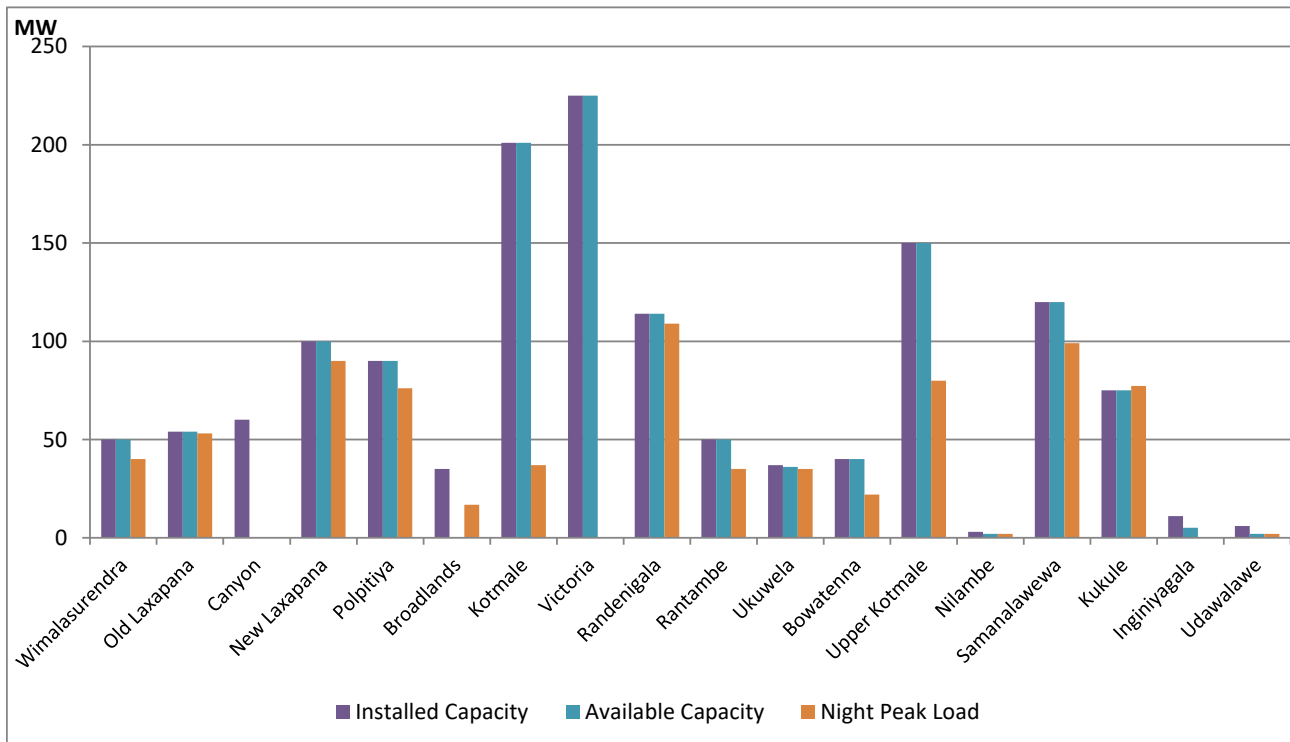


Available Generation is estimated based on plant availability at 6.00am on
Broadlands power plant is operating in the Commissioning Stage

February 15, 2022

Major Hydro Plant Loading at Night Peak

February 14, 2022



Note- Plant availability is recorded at 6.00 am on
Broadlands power plant is operating in the Commissioning Stage

February 15, 2022

Summary of Major Plant performance

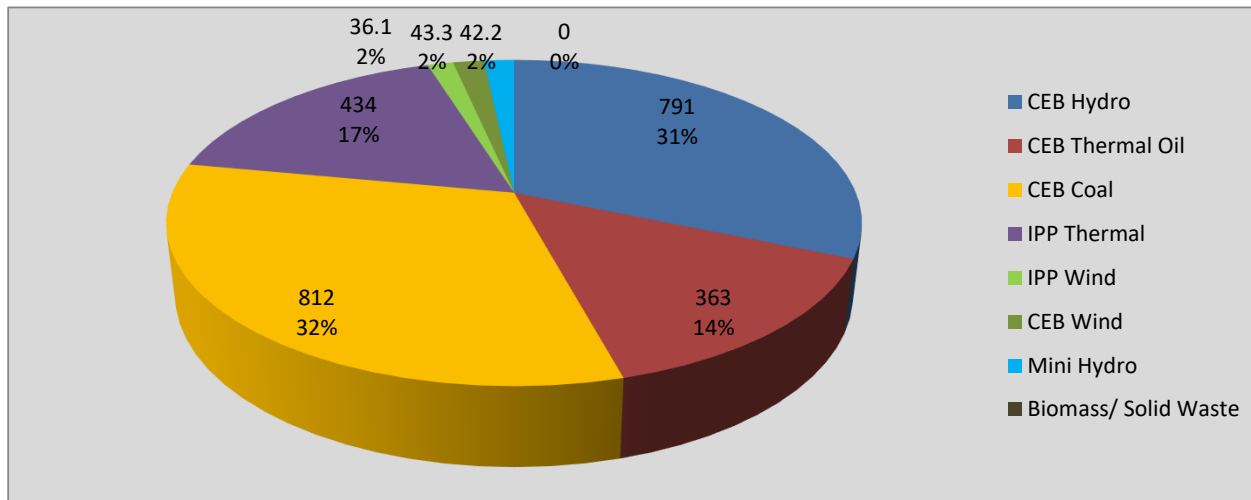
Plant	Installed Capacity (MW)	Plant Availability (MW)	Night peak Load (MW)	Plant Dispatch (MWh)
Wimalasurendra	50	50	40	250
Old Laxapana	54	54	53	636
Canyon	60	0	0	0
New Laxapana	100	100	90	1,411
Polpitiya	90	90	76	1,015
Broadlands	35	0	17	84
Kotmale	201	201	37	1,000
Victoria	225	225	0	0
Randenigala	114	114	109	1,037
Rantambe	50	50	35	518
Ukuwela	37	36	35	526
Bowatenna	40	40	22	28
Upper Kotmale	150	150	80	183
Nilambe	3	2	2	10
Samanalawewa	120	120	99	649
Kukule	75	75	77	1,741
Inginiyagala	11	5	0	0
Udawalawe	6	2	2	42
Puttalam Coal I	270	270	270	6,191
Puttalam Coal II	270	270	271	6,480
Puttalam Coal III	270	270	271	6,468
KPS Small GTs	64	0	0	0
KPS GT 7	115	0	0	0
KCCP	161	155	150	2,934
Sapugaskanda A	70	64	62	996
Sapugaskanda B	70	63	63	1,144
Uthura Janani	26	23	23	311
Barge CEB	60	60	61	916
CEB-Thulhiriya	10	0	0	0
CEB-Kolonnawa	20	2	3	2
CEB-Mathugama	20	1	1	1
Sojitz Kelanitissa	163	0	128	2,440
West Coast	270	270	306	4,600
Total	3,280	2,762	2,505	44,417

Plant availability is the availability recorded at 6 am on

February 15, 2022

Contribution to the Night Peak in MW

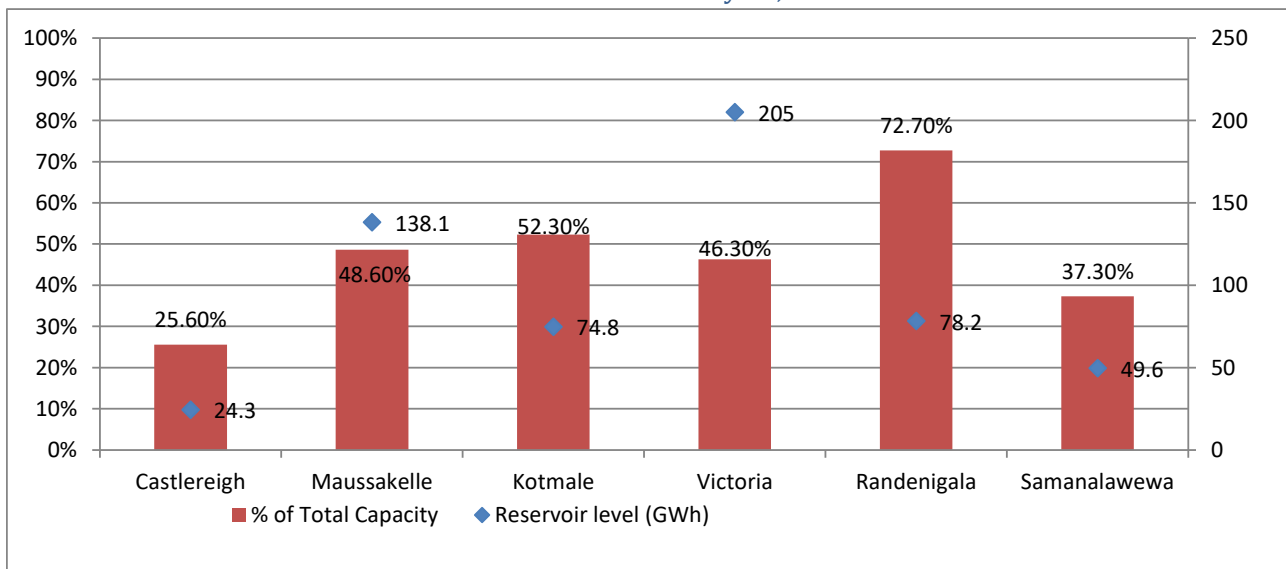
February 14, 2022



Night Peak*	2,521.9 MW
Day Peak	2,171.1 MW
Minimum Demand	1,154.3 MW

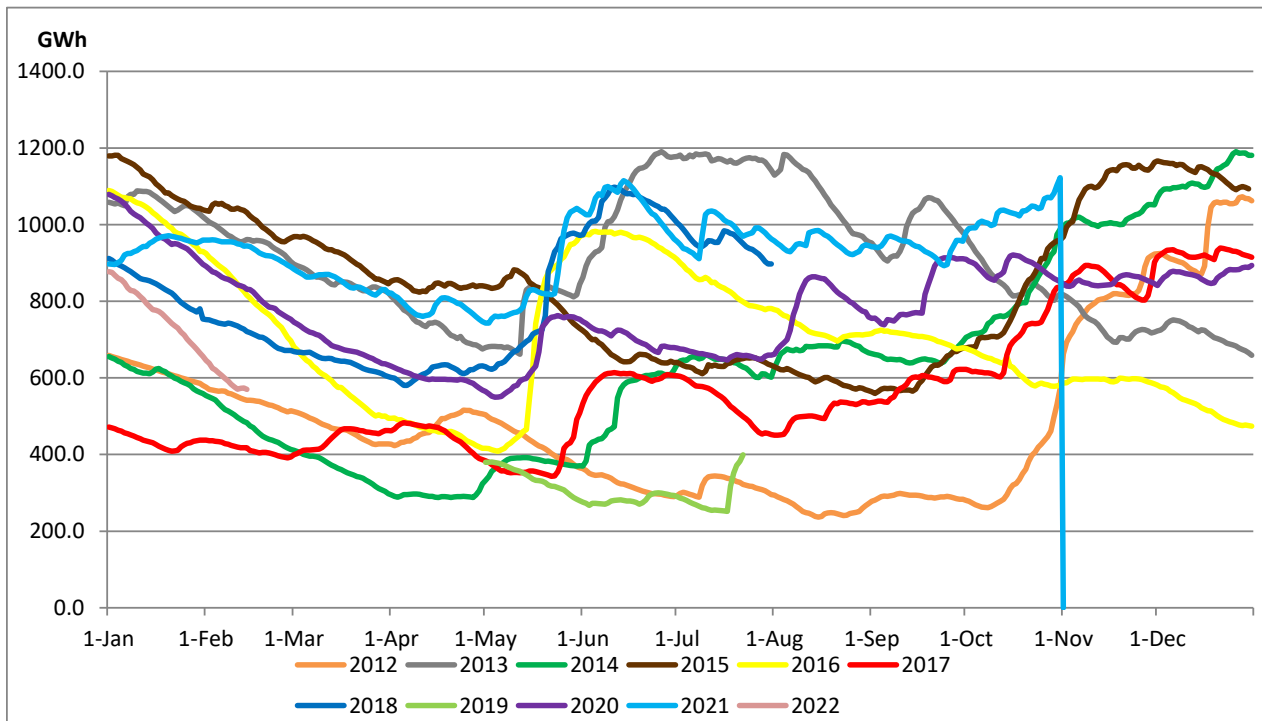
Above figures are excluding contribution from Roof Top Solar, 1MW solar, certain Wind plants and Mini Hydro plants

Reservoir Levels - as at 06.00 Hr on February 15, 2022



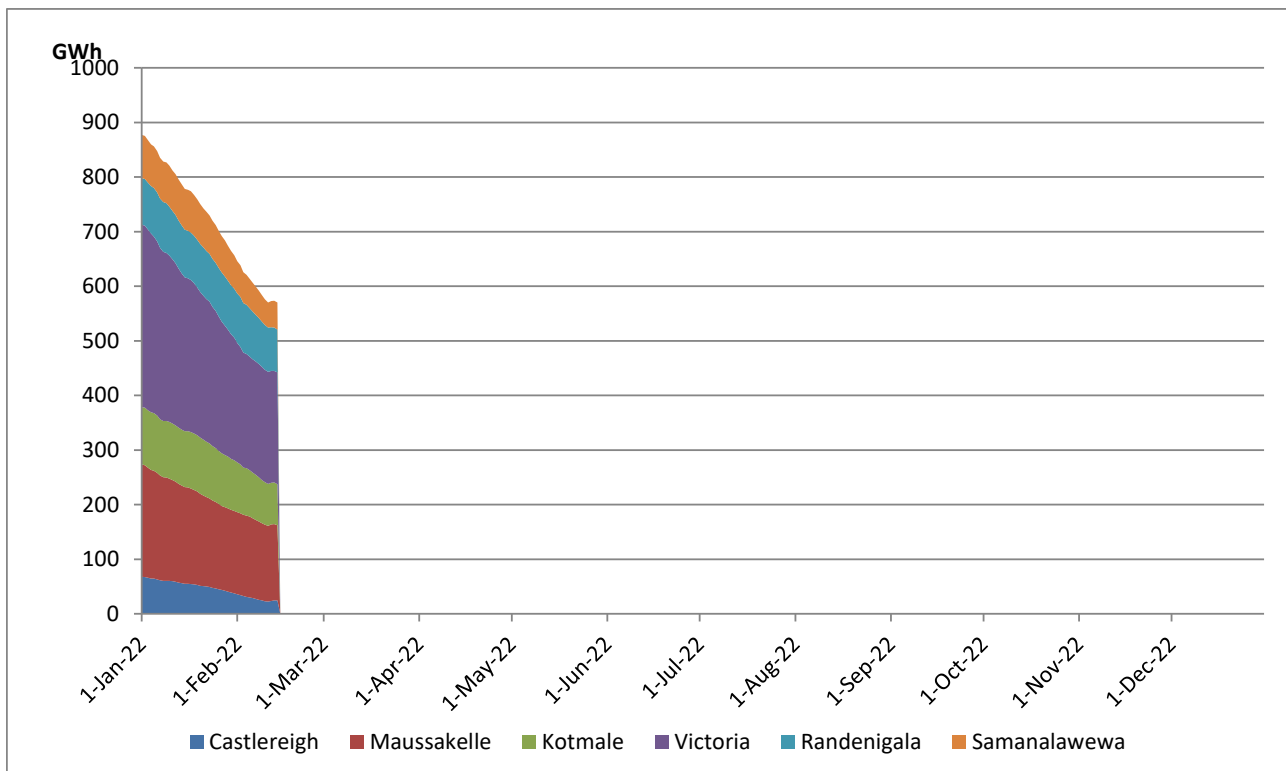
Total Reservoir Level(GWh)	570
% of Total capacity	47.1%

Comparison of Total Reservoir Storage Levels with Past Years

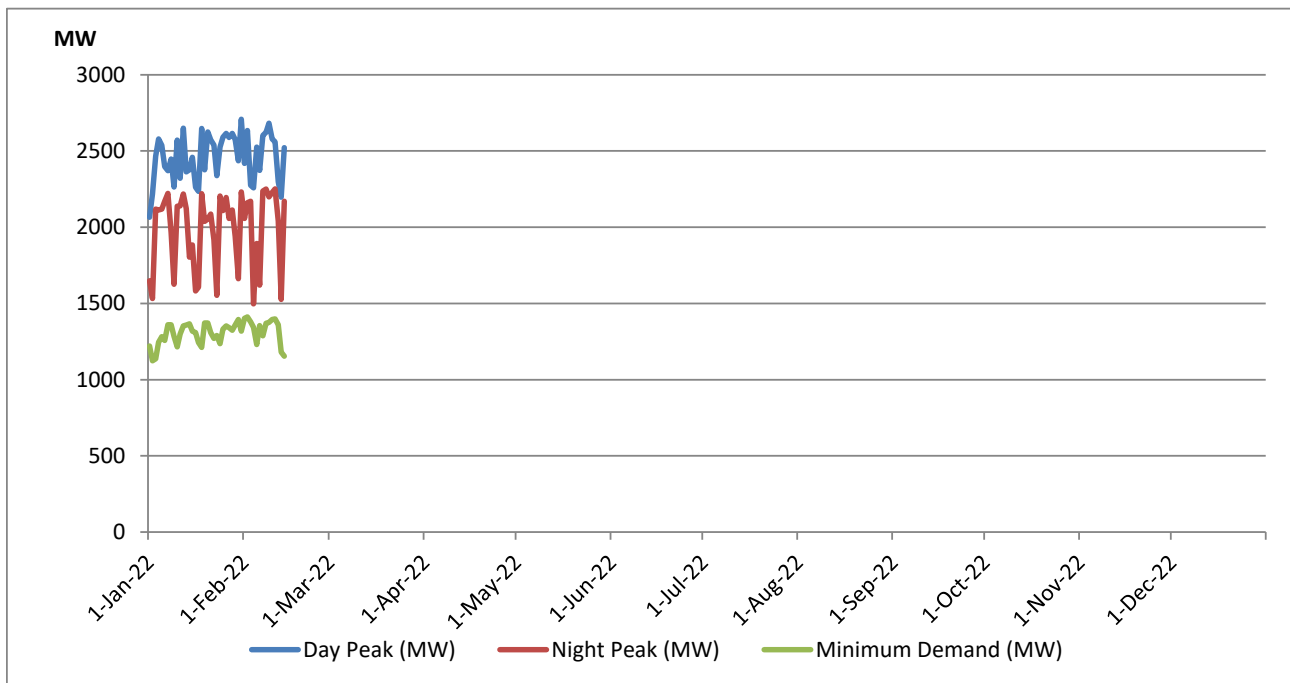


Data for 2018 and 2019 are only available for part of year.

Variation of Major Hydro Reservoir Levels in the current year (GWh)



Variation of Demand during the current year

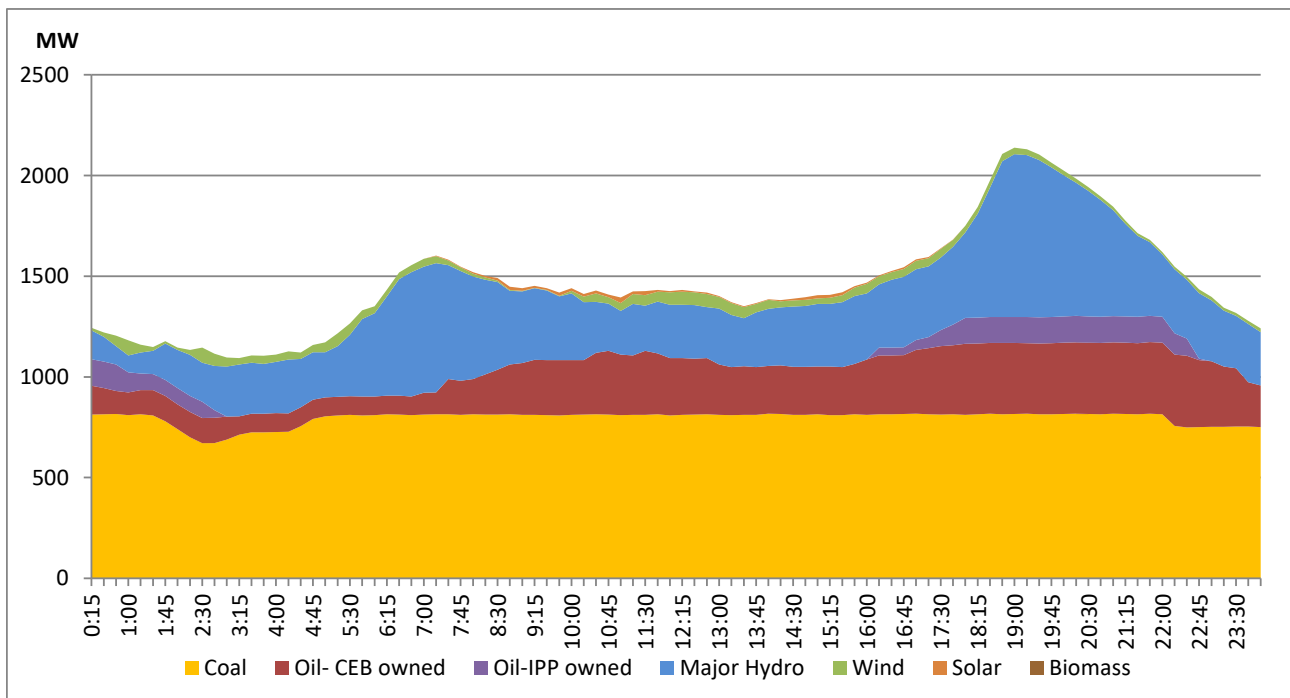


The above figures are excluding contribution from Roof Top Solar, 1MW solar, certain Wind plants and Mini Hydro plants

Daily Load Curve of the Previous day

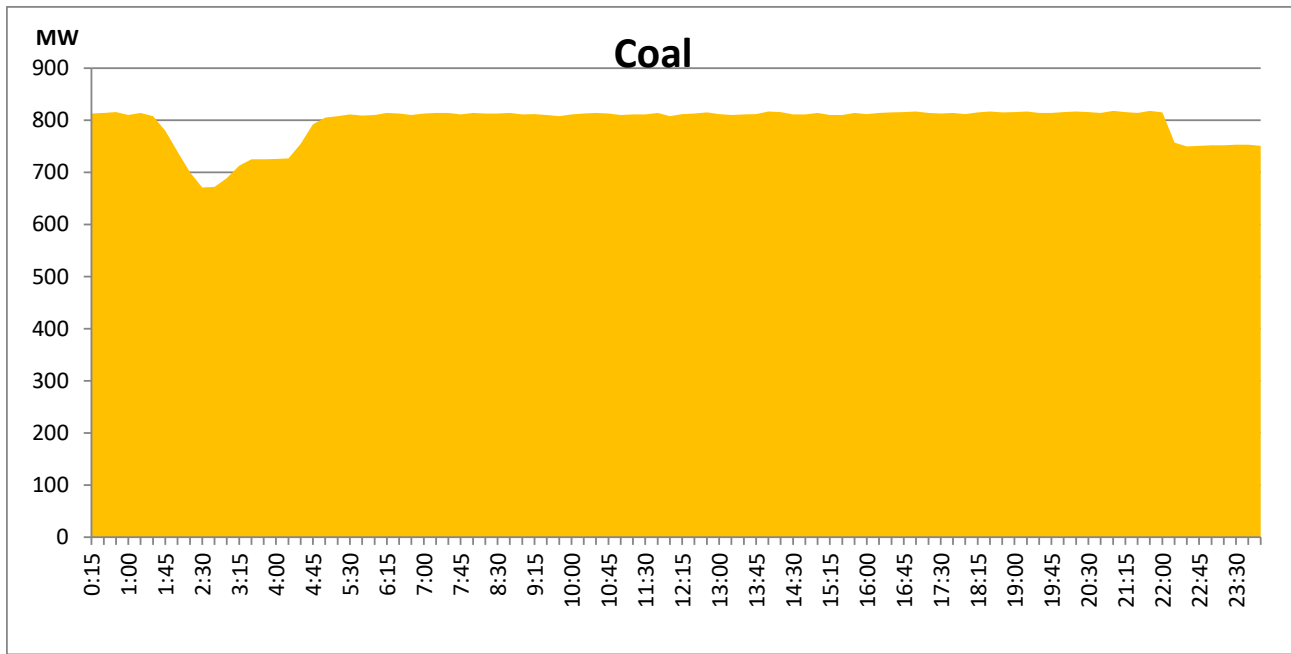
February 13, 2022

Solar and wind data is based on Telemetered Power Stations only



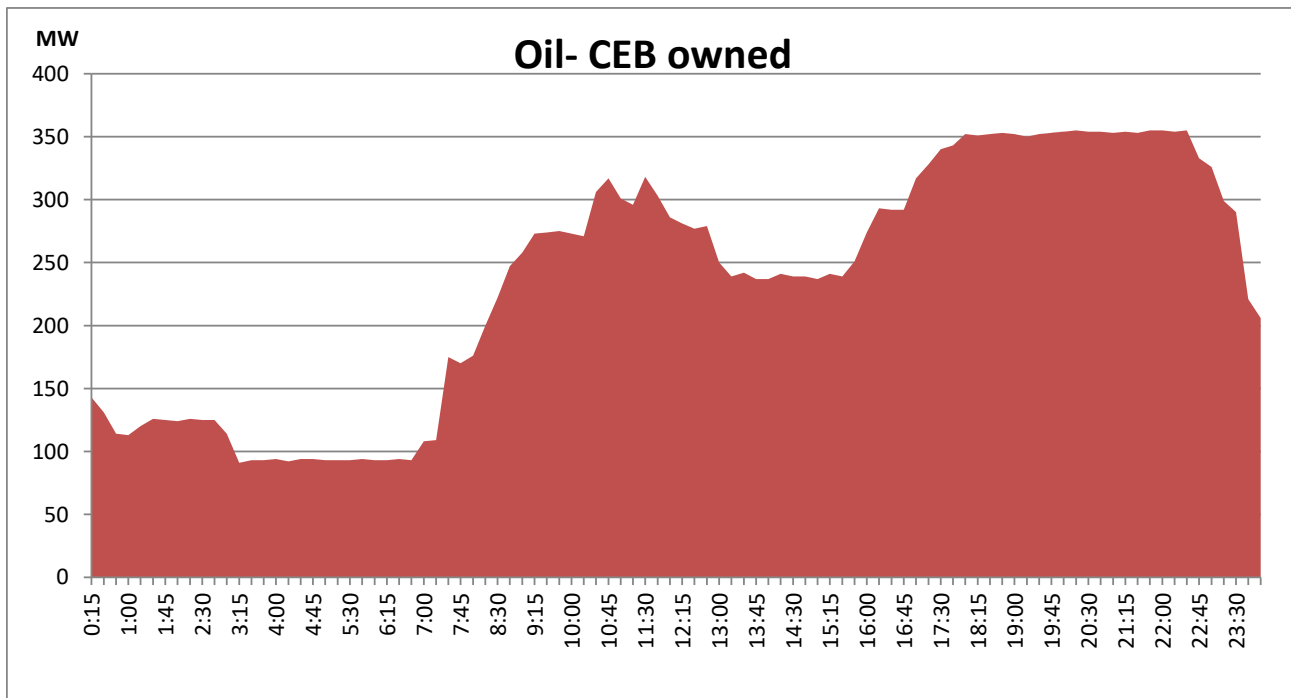
Coal Generation during the Previous day

February 13, 2022



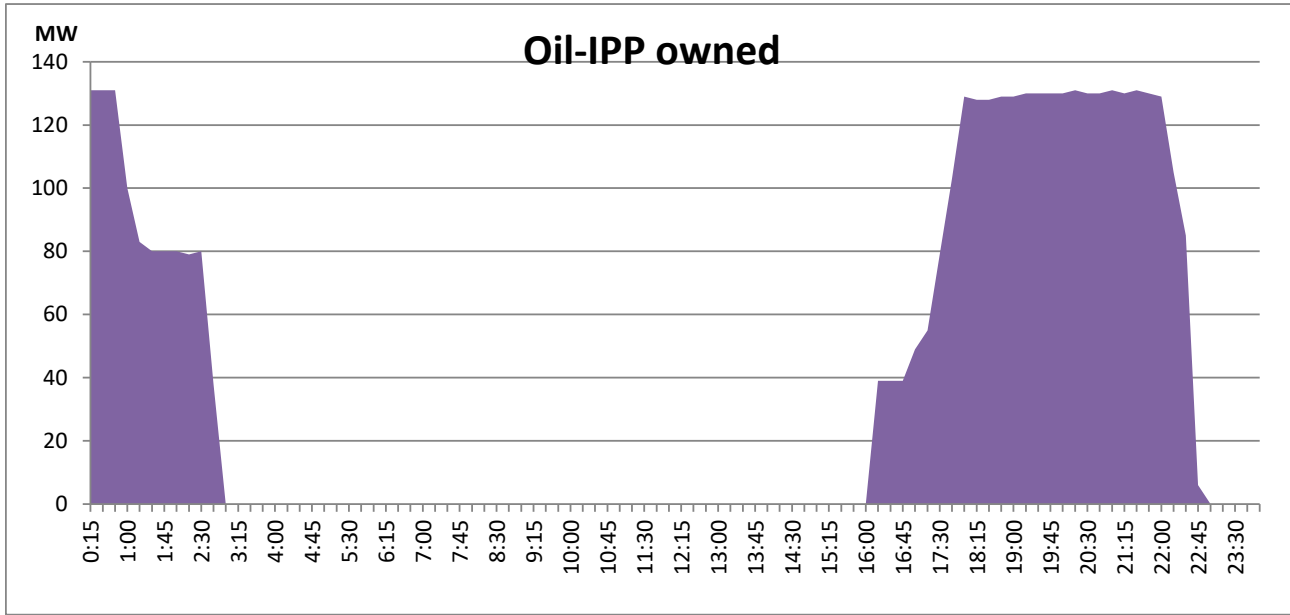
CEB Oil Plant Generation during the Previous day

February 13, 2022



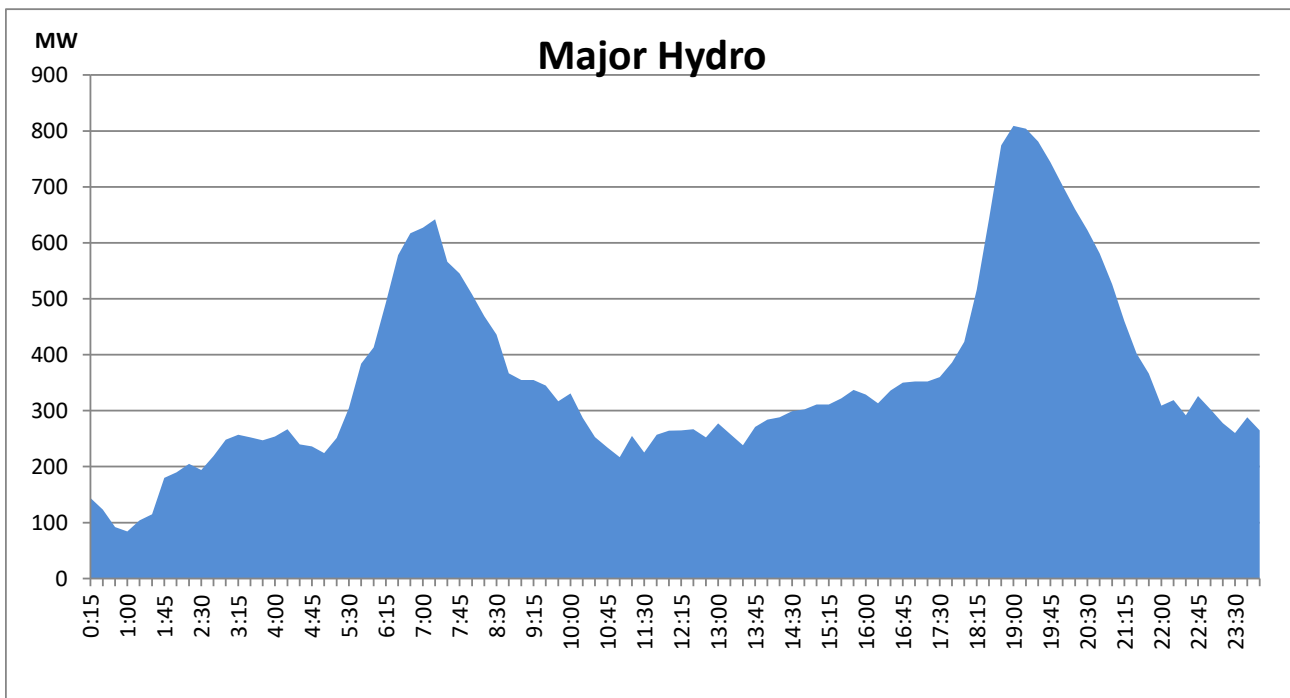
IPP Oil Plant Generation during the Previous day

February 13, 2022



Major Hydro Generation during the Previous day

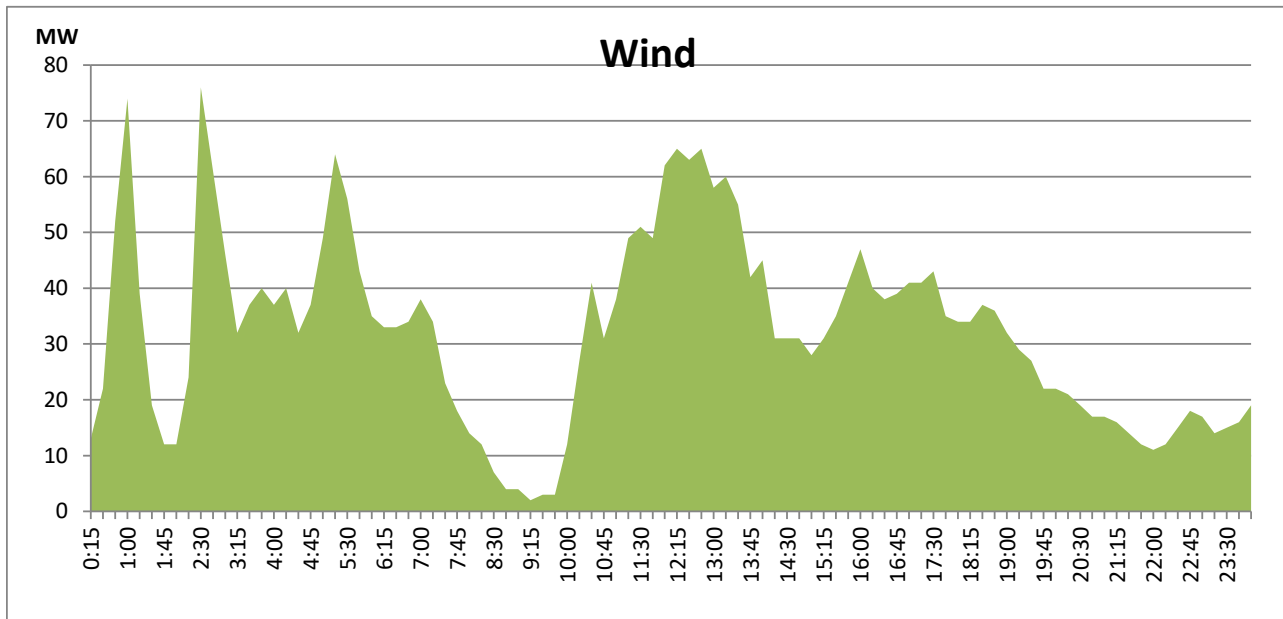
February 13, 2022



Wind Generation during the Previous day

February 13, 2022

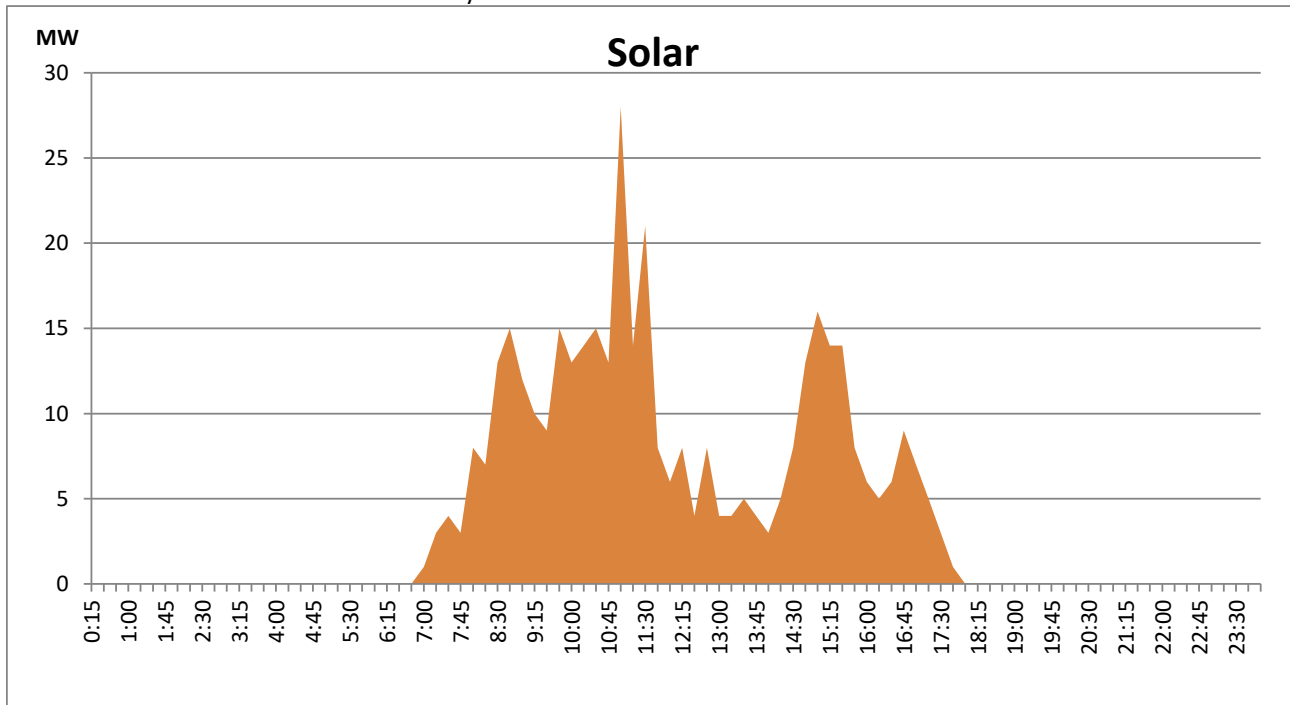
Based on Telemetered Power Stations only



Solar Generation during the Previous day

February 13, 2022

Based on Telemetered Power Stations only



Thermal Plant Fuel types

Power Station	Primary Fuel
CEB Thermal	
Sapugaskanda 1	Heavy Fuel
Sapugaskanda 2	Heavy Fuel
Kelanitissa Small Gas Turbines	Auto Diesel
GT 7 - Kelanitissa	Auto Diesel
Kelanitissa CCY	Naptha & Diesel
Lakvijaya 1	Coal
Lakvijaya 2	Coal
Lakvijaya 3	Coal
Uthuru Janani	Heavy Fuel
Barge CEB	Furnace Oil

Power Station	Primary Fuel
Private Thermal	
Sojitz - Kelanitissa	Auto Diesel
West Coast	Low Sulphur Furnace oil

Major Incidents during the day -as reported by CEB morning of

February 15, 2022

1) Sojitz performed a forced shutdown at 00:38hrs on 15.02.2022 due to lack of fuel.

Malith Premathunga

System Control Engineer

(1) - Excluding energy contribution from Roof Top Solar, 1MW solar, certain Mini Hydro plants and Biomass plants

(2) - Excluding contribution from Roof Top Solar, 1MW solar, certain Wind plants, Mini Hydro plants and Biomass plants

(3) - Including data from 26 number of telemetered mini hydro plants (MHP) having total Installed Capacity of 129MW.

(4) - Randenigala MOL has been revised to 209 masl from 199.5 masl and Samanalawewa Spill level has been revised to 455 masl from 460 masl with effect from 01 st Feb. 2018 considering reservoir operation restrictions.

(5)- Percentage of the total capacity of Vict and Koth storage is calculated by considering downstream reservoir storage