

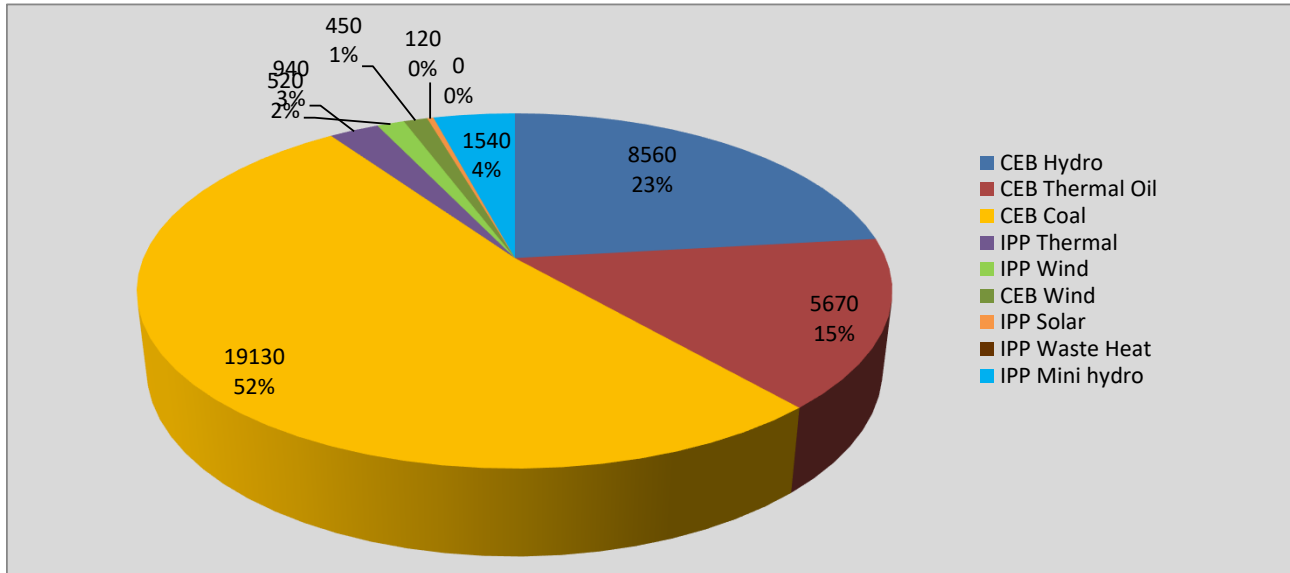
Generation and Reservoirs Statistics

February 13, 2022



PUBLIC UTILITIES COMMISSION OF SRI LANKA

Daily Generation Mix in MWh



Total Generation **36,930 MWh**

Note: Above data is excluding contribution from Roof Top Solar, 1MW Solar and certain Mini Hydro plants

Cumulative Dispatch

Note: Following data is Excluding contribution from Roof Top Solar, 1MW solar and Mini Hydro plants

For Current Month

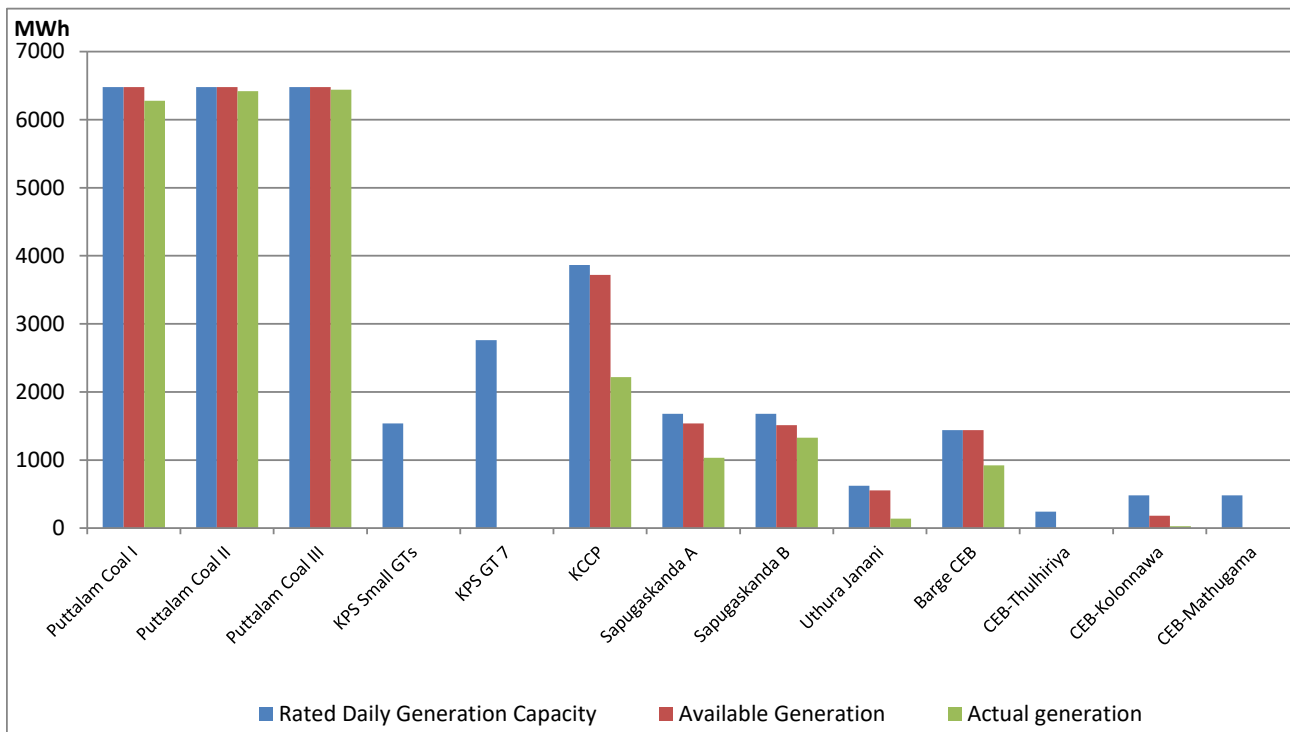
Category	Dispatch (GWh)	Percentage
CEB Hydro	135.4	23.77%
CEB Thermal Oil	78.5	13.79%
CEB Coal	244.1	42.86%
IPP Thermal	84.9	14.90%
SPP Wind	5.5	0.96%
CEB Wind	6.9	1.21%
SPP Solar	3.2	0.55%
SPP Solid Waste	1.3	0.22%
Mini Hydro	9.9	1.73%
Total	569.6	

For Current Year

Category	Dispatch (GWh)	Percentage
CEB Hydro	542.7	28.42%
CEB Thermal Oil	322.7	16.90%
CEB Coal	651.4	34.11%
IPP Thermal	288.9	15.13%
SPP Wind	20.8	1.09%
CEB Wind	25.0	1.31%
SPP Solar	11.1	0.58%
SPP Solid Waste	9.4	0.49%
Mini Hydro	38.1	1.99%
Total	1,909.8	

CEB owned Thermal Plant Dispatch

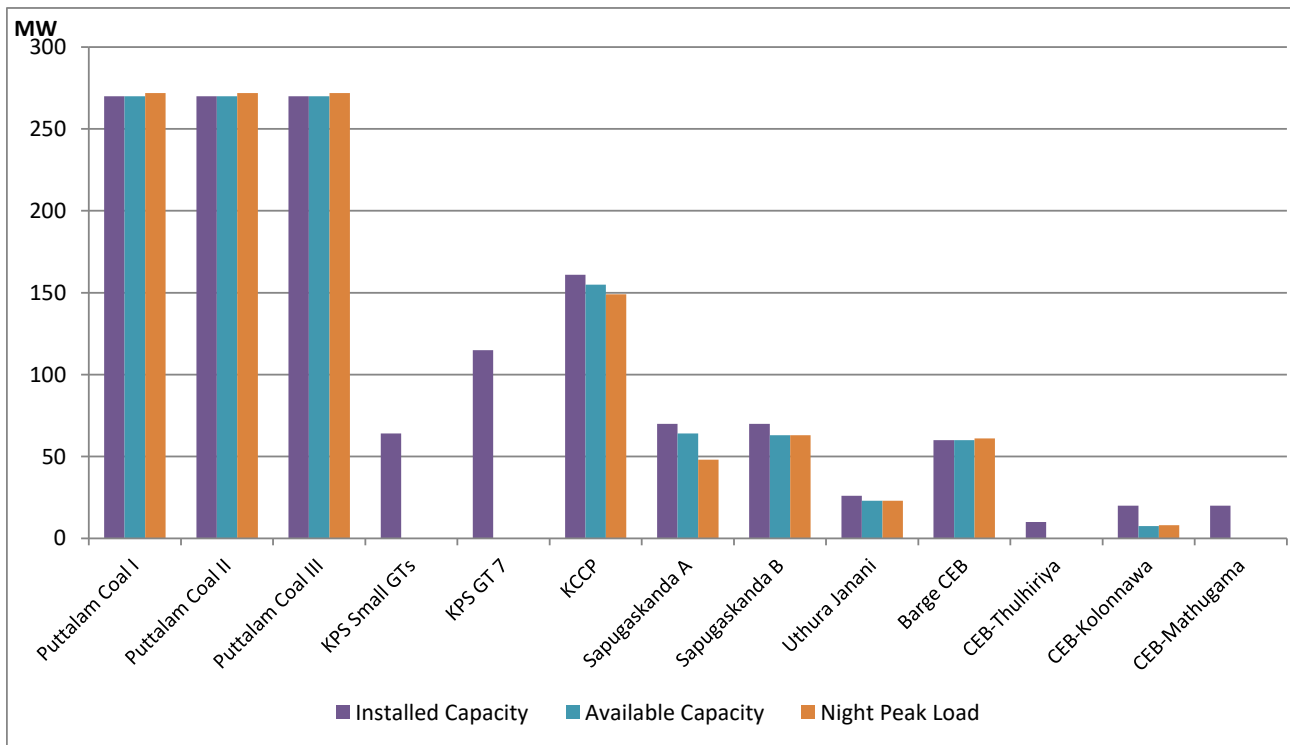
February 13, 2022



Available Generation is estimated based on plant availability at 6.00am on

February 14, 2022

CEB owned Thermal Plant Loading at the Night Peak



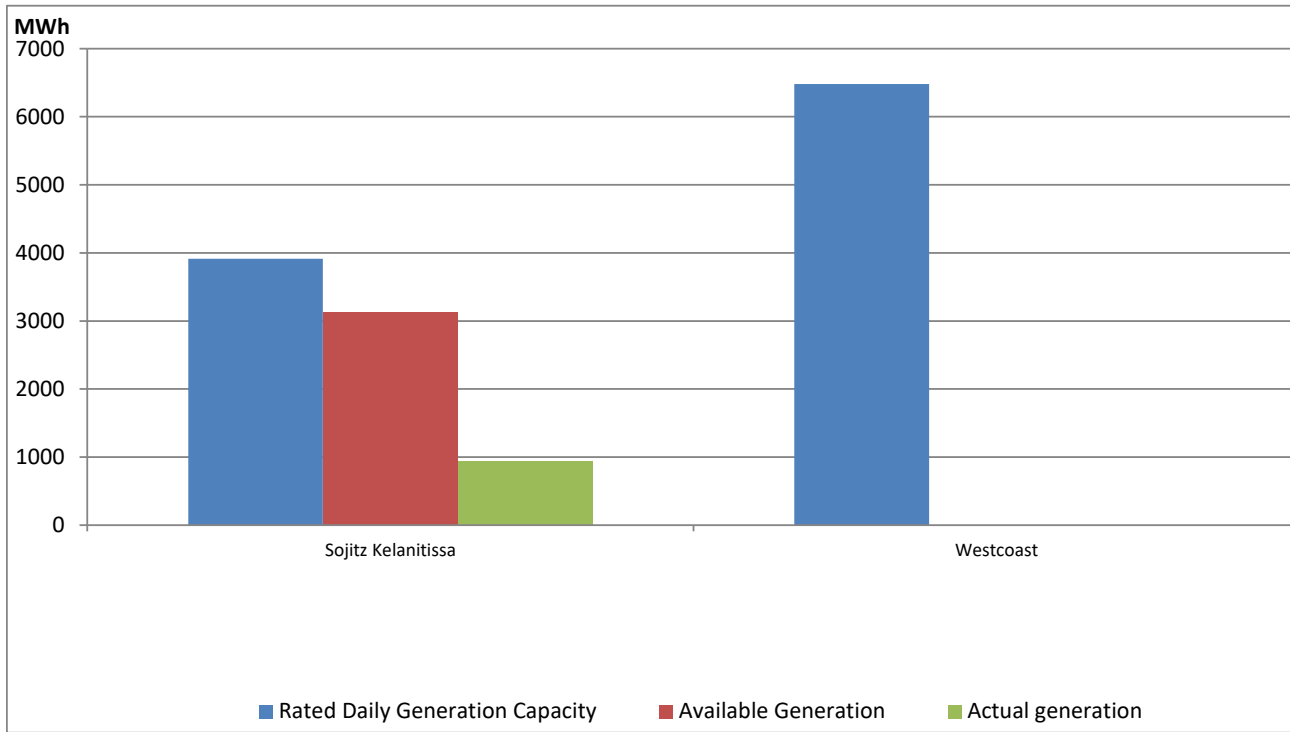
Note- Plant availability is recorded at 6.00 am on

February 14, 2022

IPP owned Thermal Plant Dispatch

February 13, 2022

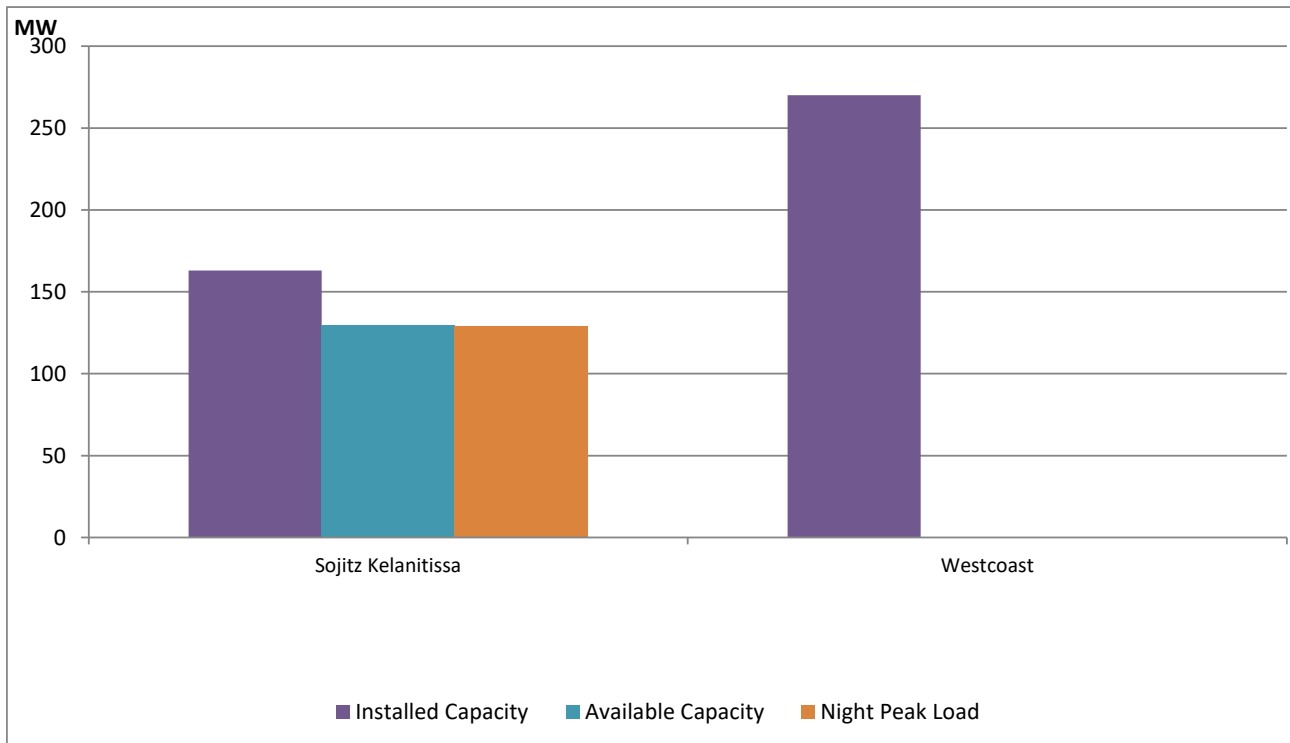
ACE Embilipitiya, ACE Matara, Asia Power, V Power Pallekale, Vpower Galle, V Power Horana, Vpower Hambantota, Vpower Valachchena and Altaqa Mahiyanganaya are not available due to expiration of PPAs



Available Generation is estimated based on plant availability at 6.00am on

February 14, 2022

IPP owned Thermal Plant Loading at the Night Peak

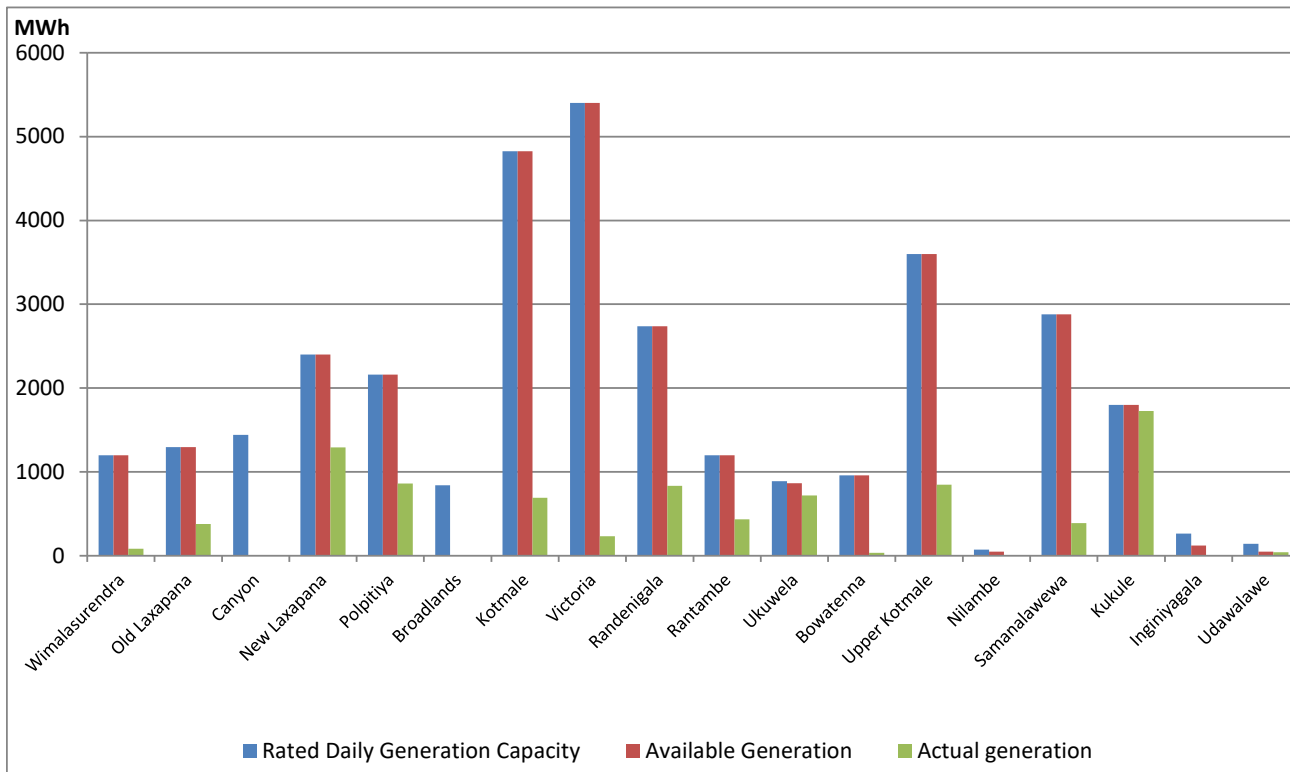


Note- Plant availability is recorded at 6.00 am on

February 14, 2022

Major Hydro Plant Dispatch

February 13, 2022

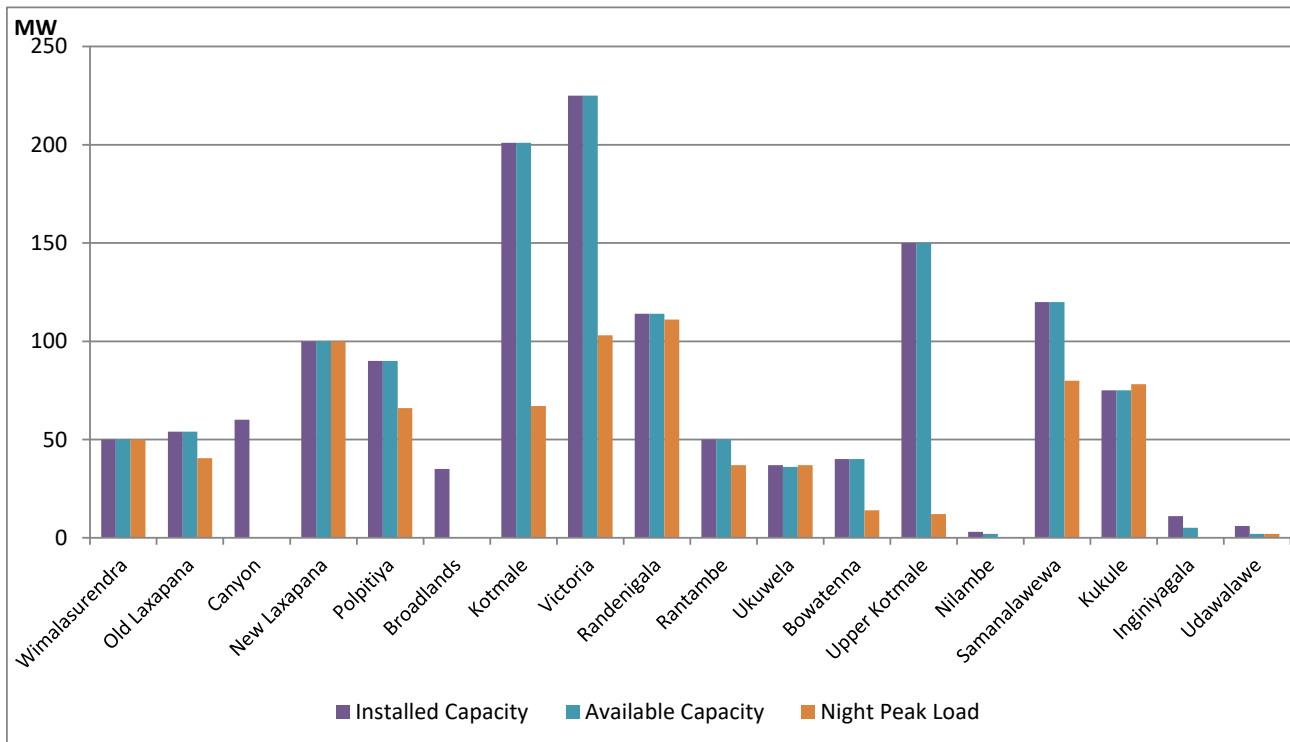


Available Generation is estimated based on plant availability at 6.00am on
Broadlands power plant is operating in the Commissioning Stage

February 14, 2022

Major Hydro Plant Loading at Night Peak

February 13, 2022



Note- Plant availability is recorded at 6.00 am on
Broadlands power plant is operating in the Commissioning Stage

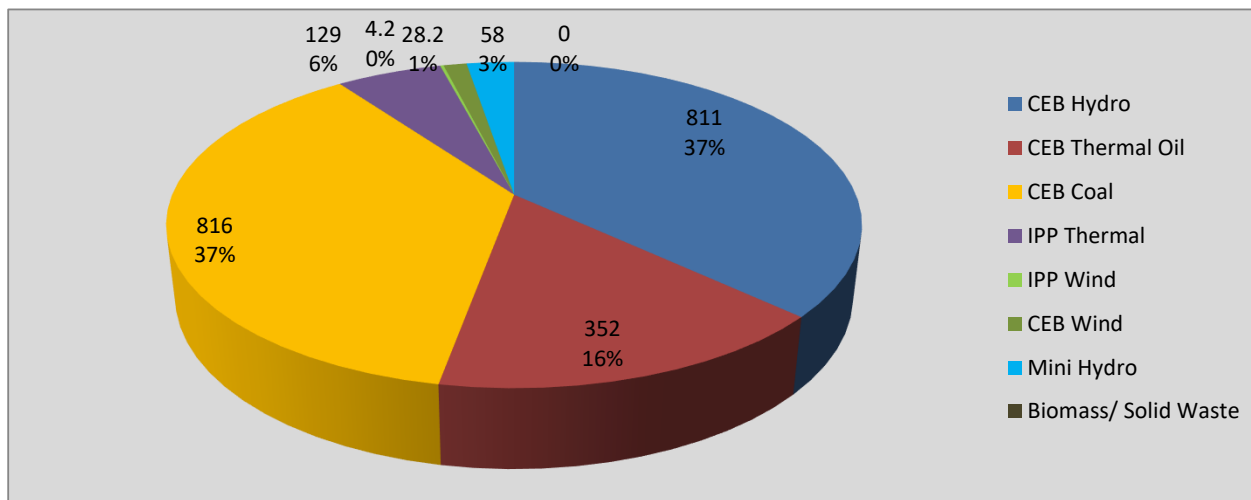
February 14, 2022

Summary of Major Plant performance

Plant	Installed Capacity (MW)	Plant Availability (MW)	Night peak Load (MW)	Plant Dispatch (MWh)
Wimalasurendra	50	50	50	83
Old Laxapana	54	54	41	380
Canyon	60	0	0	0
New Laxapana	100	100	100	1,291
Polpitiya	90	90	66	860
Broadlands	35	0	0	0
Kotmale	201	201	67	690
Victoria	225	225	103	232
Randenigala	114	114	111	835
Rantambe	50	50	37	434
Ukuwela	37	36	37	718
Bowatenna	40	40	14	34
Upper Kotmale	150	150	12	847
Nilambe	3	2	0	0
Samanalawewa	120	120	80	388
Kukule	75	75	78	1,728
Inginiyagala	11	5	0	0
Udawalawe	6	2	2	42
Puttalam Coal I	270	270	272	6,277
Puttalam Coal II	270	270	272	6,418
Puttalam Coal III	270	270	272	6,439
KPS Small GTs	64	0	0	0
KPS GT 7	115	0	0	0
KCCP	161	155	149	2,218
Sapugaskanda A	70	64	48	1,031
Sapugaskanda B	70	63	63	1,329
Uthura Janani	26	23	23	137
Barge CEB	60	60	61	923
CEB-Thulhiriya	10	0	0	0
CEB-Kolonnawa	20	8	8	29
CEB-Mathugama	20	0	0	0
Sojitz Kelanitissa	163	130	129	938
West Coast	270	0	0	0
Total	3,280	2,627	2,185	36,935

Plant availability is the availability recorded at 6 am on

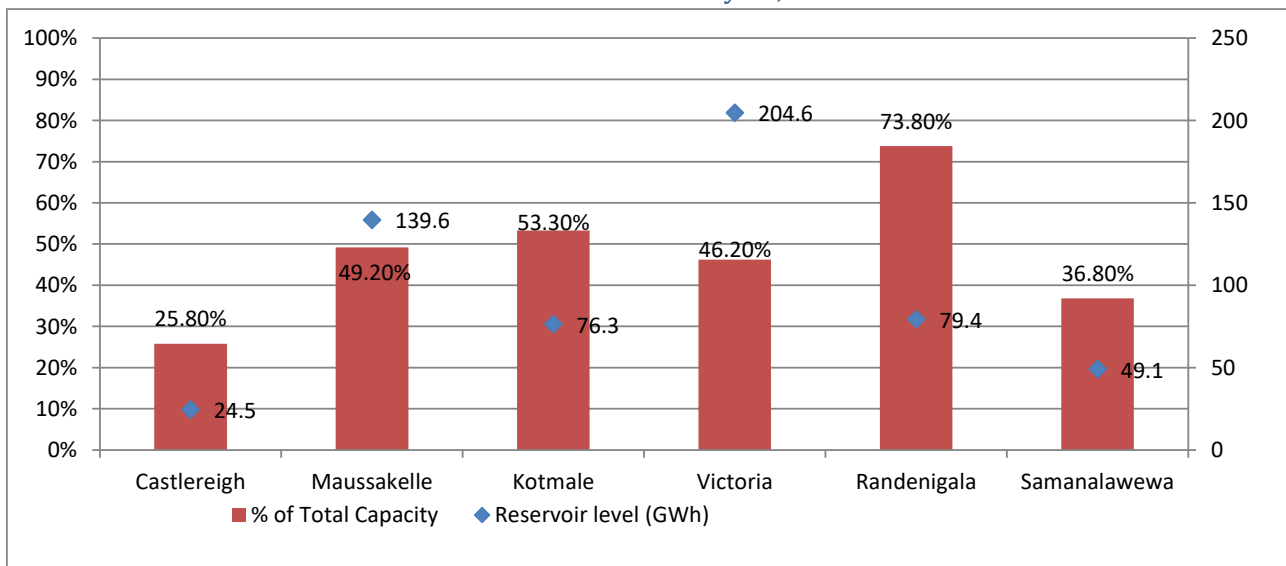
February 14, 2022



Night Peak*	2,198.0 MW
Day Peak	1,527.3 MW
Minimum Demand	1,179.9 MW

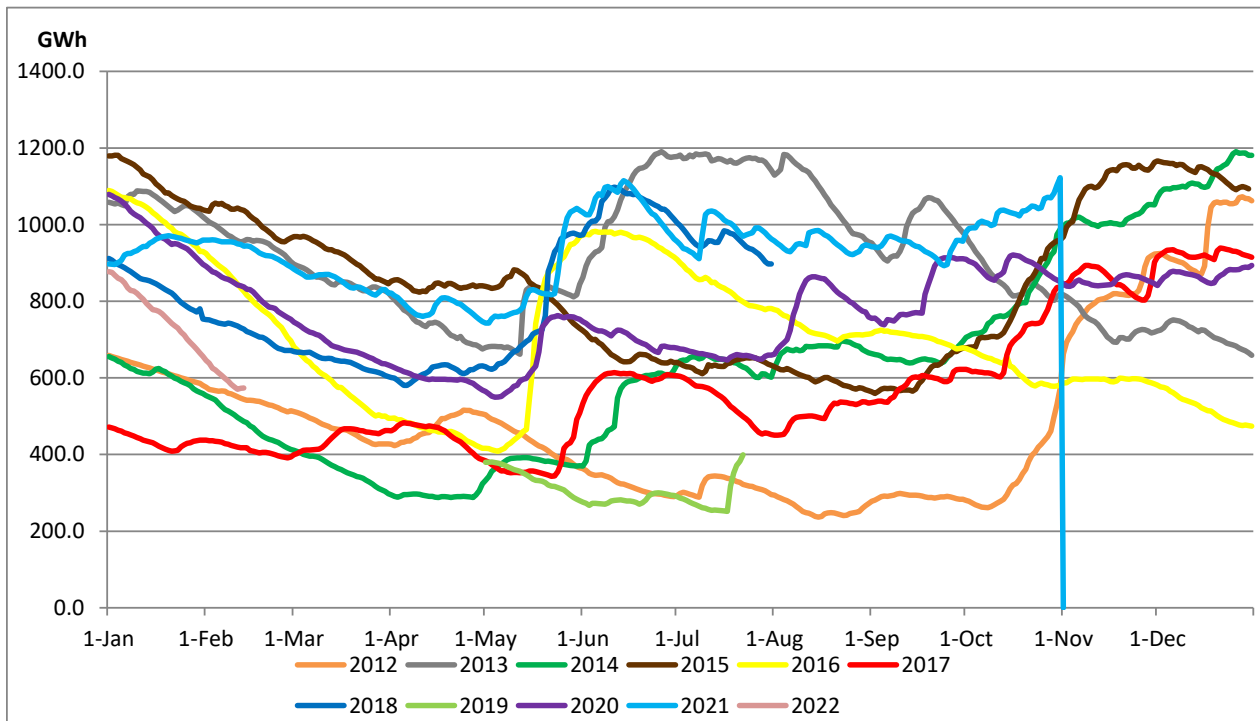
Above figures are excluding contribution from Roof Top Solar, 1MW solar, certain Wind plants and Mini Hydro plants

Reservoir Levels - as at 06.00 Hr on February 14, 2022



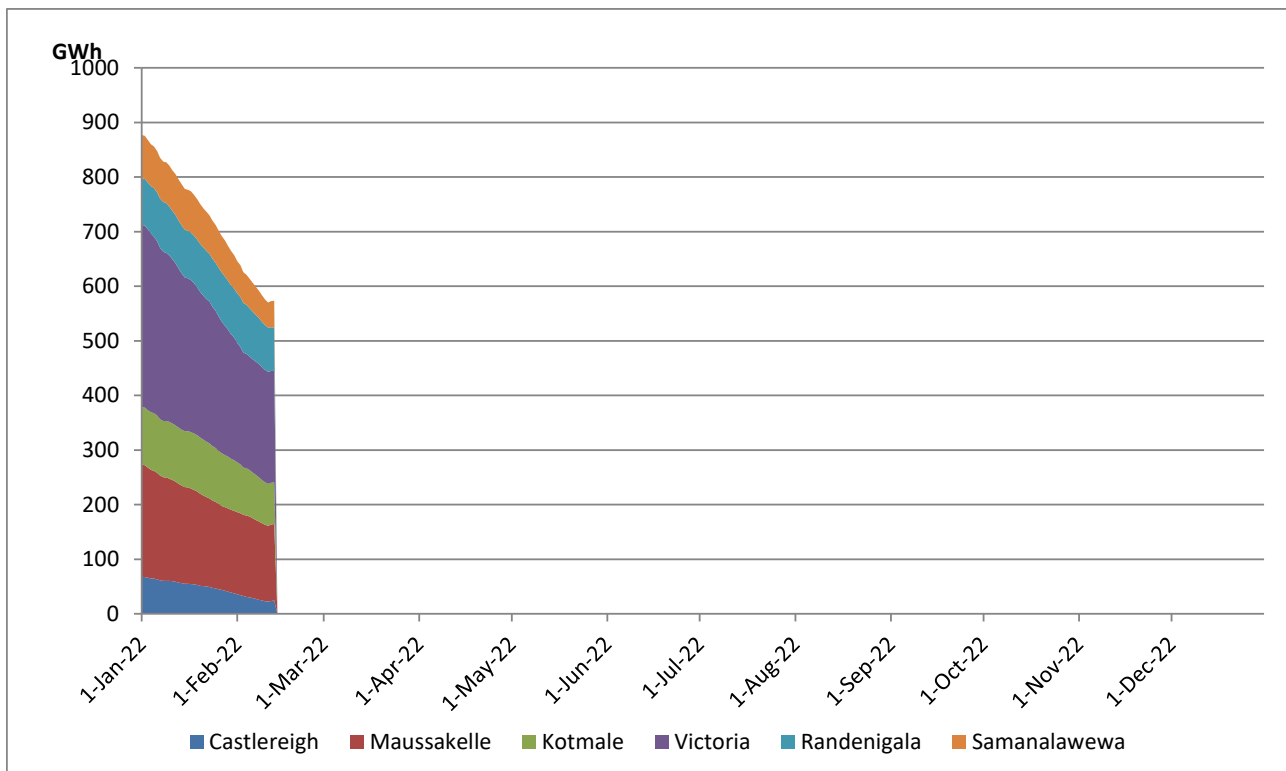
Total Reservoir Level(GWh)	573.5
% of Total capacity	47.5%

Comparison of Total Reservoir Storage Levels with Past Years

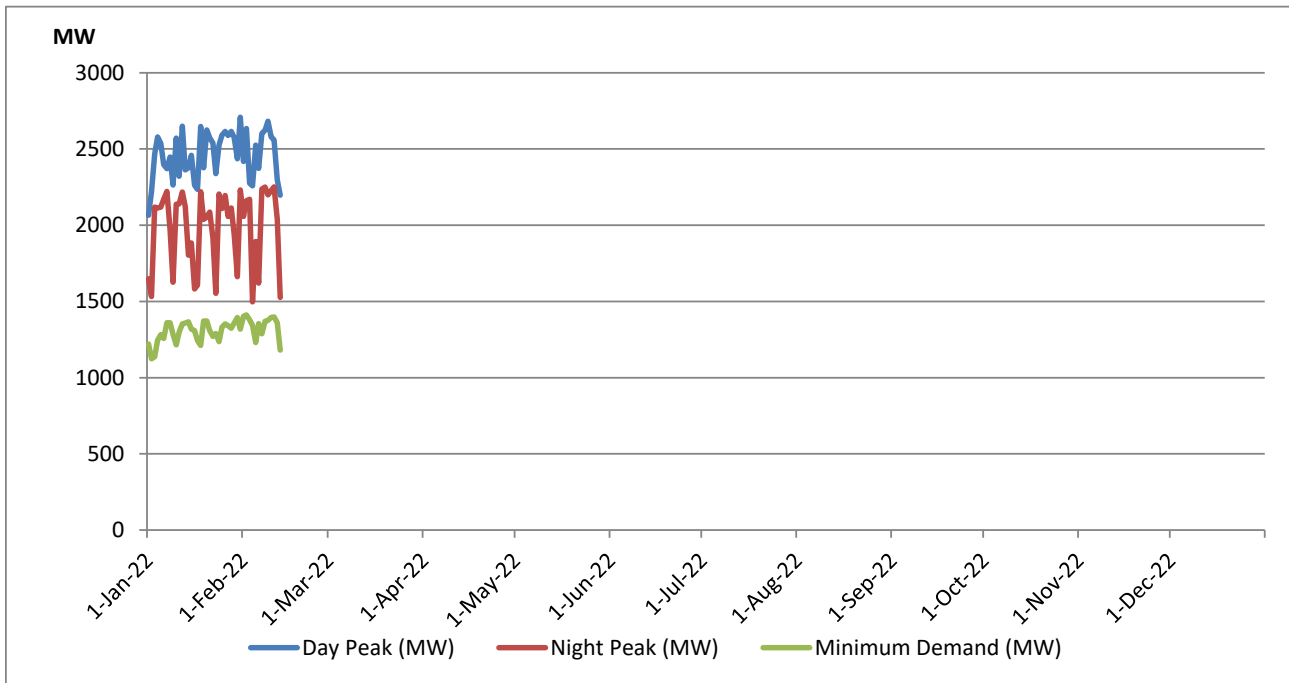


Data for 2018 and 2019 are only available for part of year.

Variation of Major Hydro Reservoir Levels in the current year (GWh)



Variation of Demand during the current year

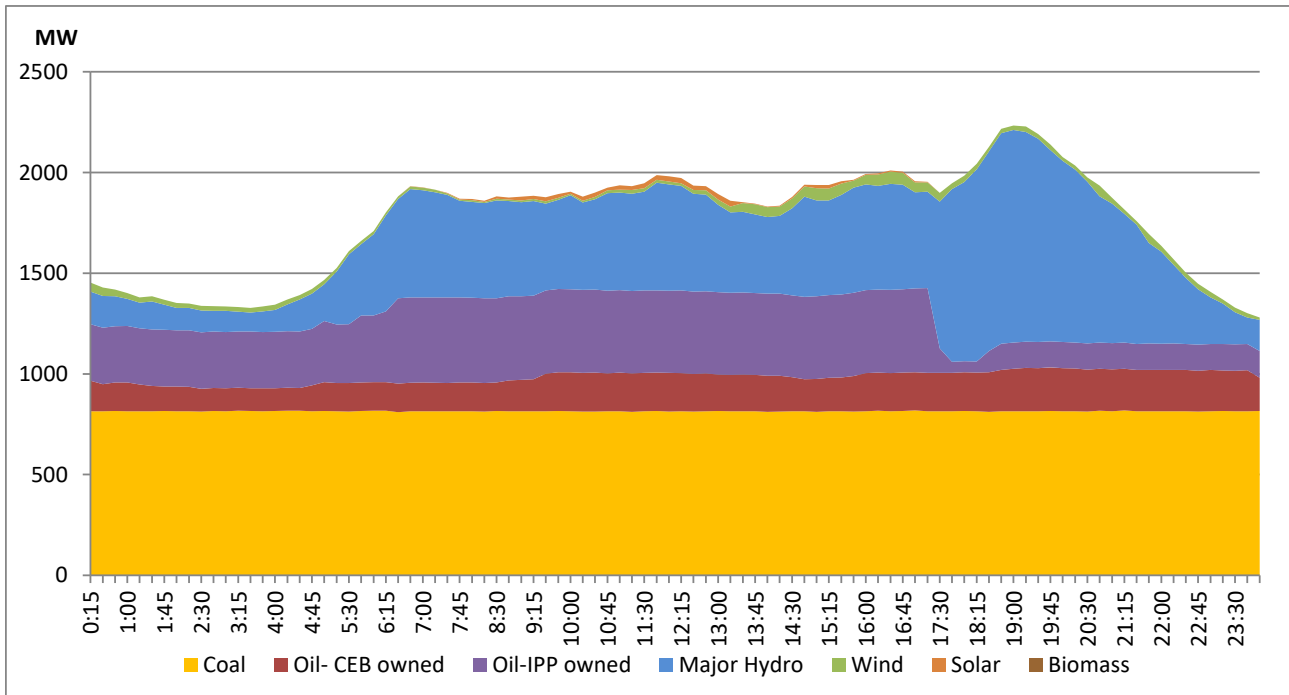


The above figures are excluding contribution from Roof Top Solar, 1MW solar, certain Wind plants and Mini Hydro plants

Daily Load Curve of the Previous day

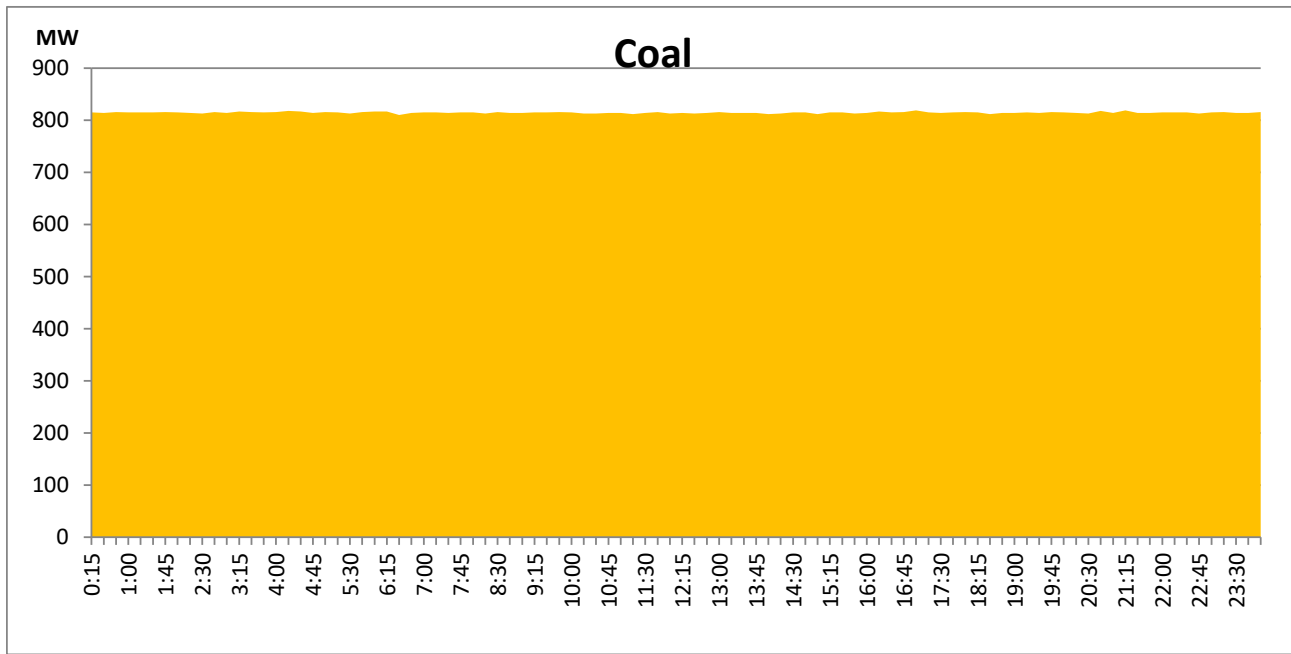
February 12, 2022

Solar and wind data is based on Telemetered Power Stations only



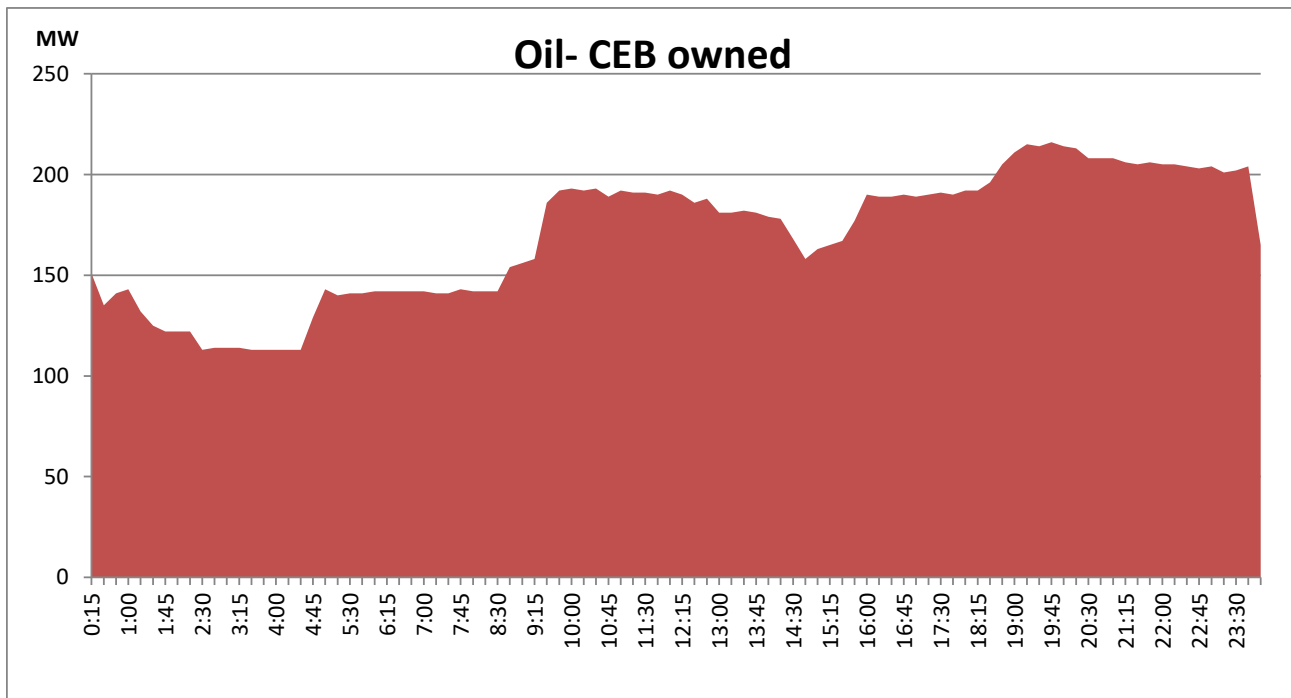
Coal Generation during the Previous day

February 12, 2022



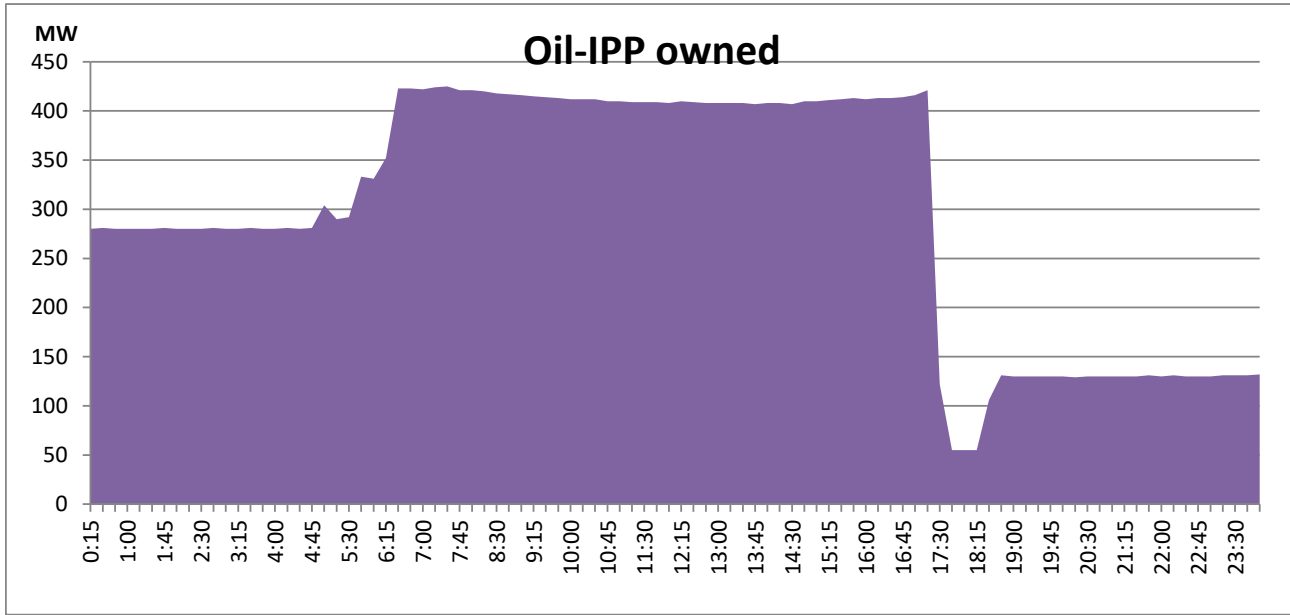
CEB Oil Plant Generation during the Previous day

February 12, 2022



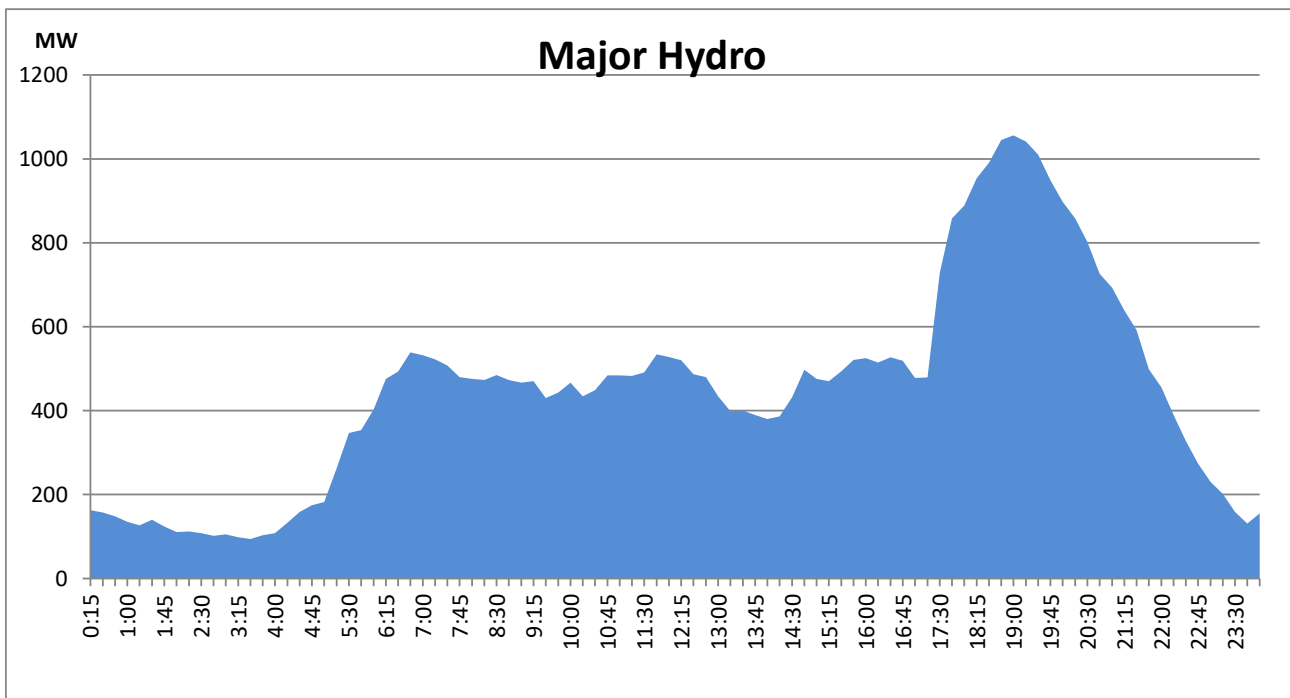
IPP Oil Plant Generation during the Previous day

February 12, 2022



Major Hydro Generation during the Previous day

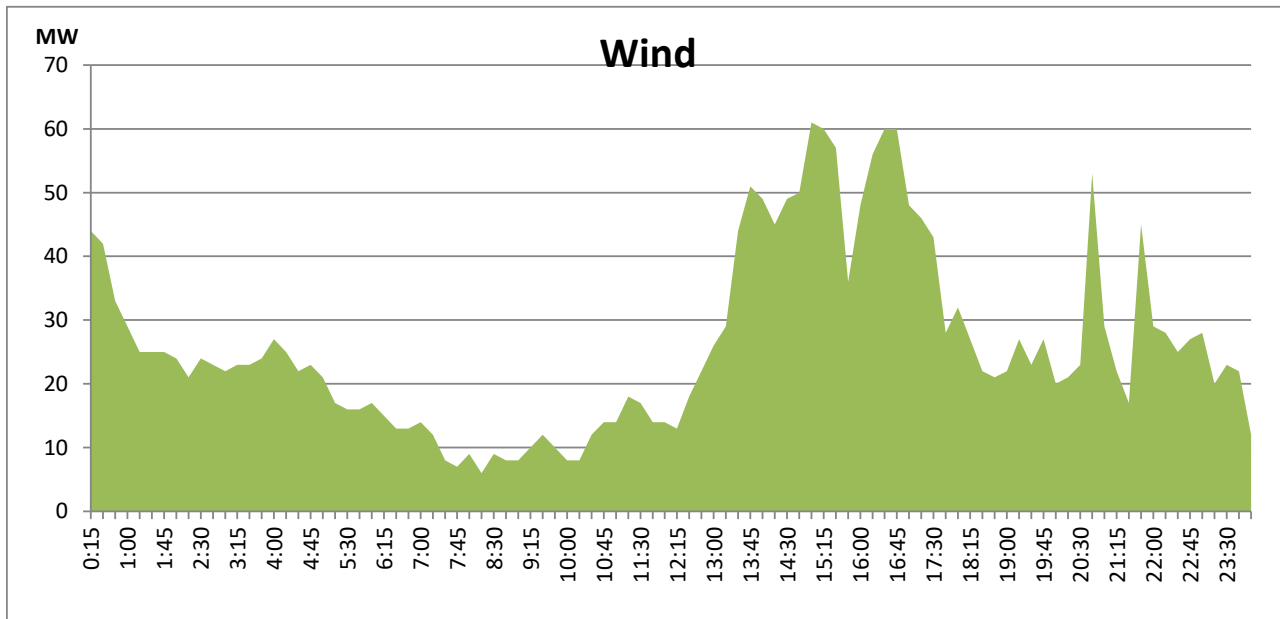
February 12, 2022



Wind Generation during the Previous day

February 12, 2022

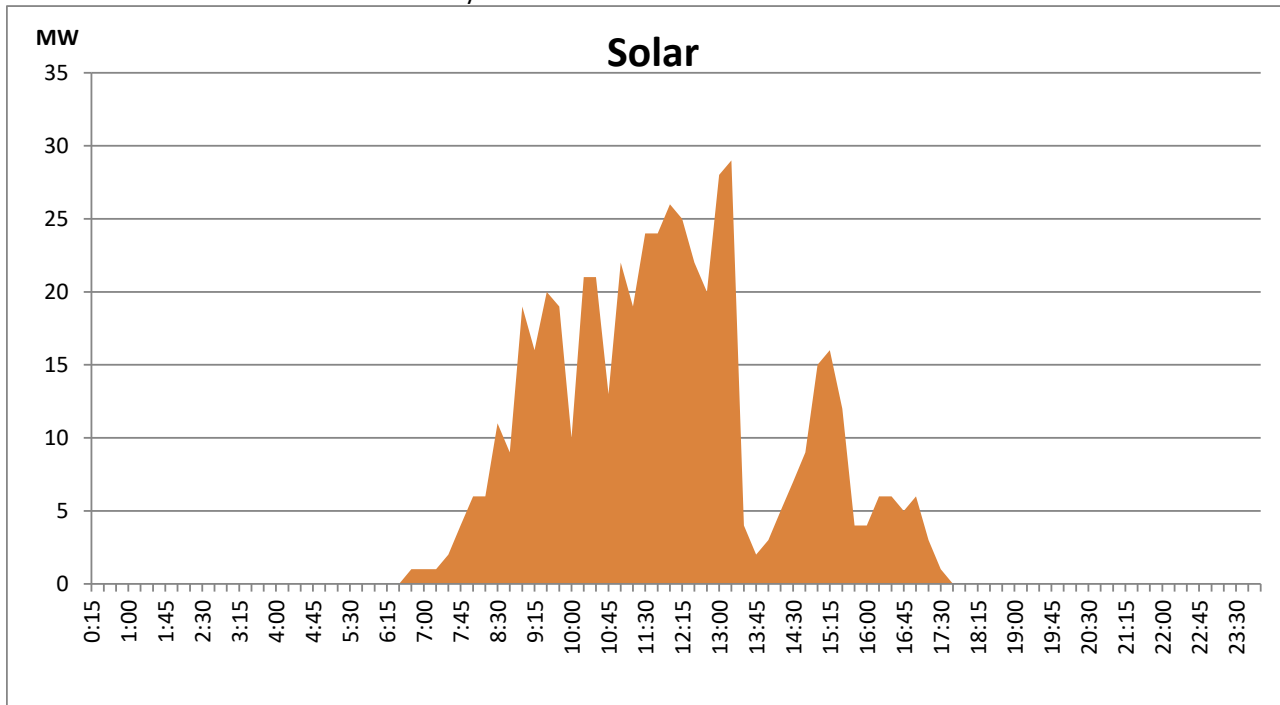
Based on Telemetered Power Stations only



Solar Generation during the Previous day

February 12, 2022

Based on Telemetered Power Stations only



Thermal Plant Fuel types

Power Station	Primary Fuel
CEB Thermal	
Sapugaskanda 1	Heavy Fuel
Sapugaskanda 2	Heavy Fuel
Kelanitissa Small Gas Turbines	Auto Diesel
GT 7 - Kelanitissa	Auto Diesel
Kelanitissa CCY	Naptha & Diesel
Lakvijaya 1	Coal
Lakvijaya 2	Coal
Lakvijaya 3	Coal
Uthuru Janani	Heavy Fuel
Barge CEB	Furnace Oil

Power Station	Primary Fuel
Private Thermal	
Sojitz - Kelanitissa	Auto Diesel
West Coast	Low Sulphur Furnace oil

Major Incidents during the day -as reported by CEB morning of

February 14, 2022

1) Kuku spilling started at 6:23 hrs and stopped 12:45 hrs.