

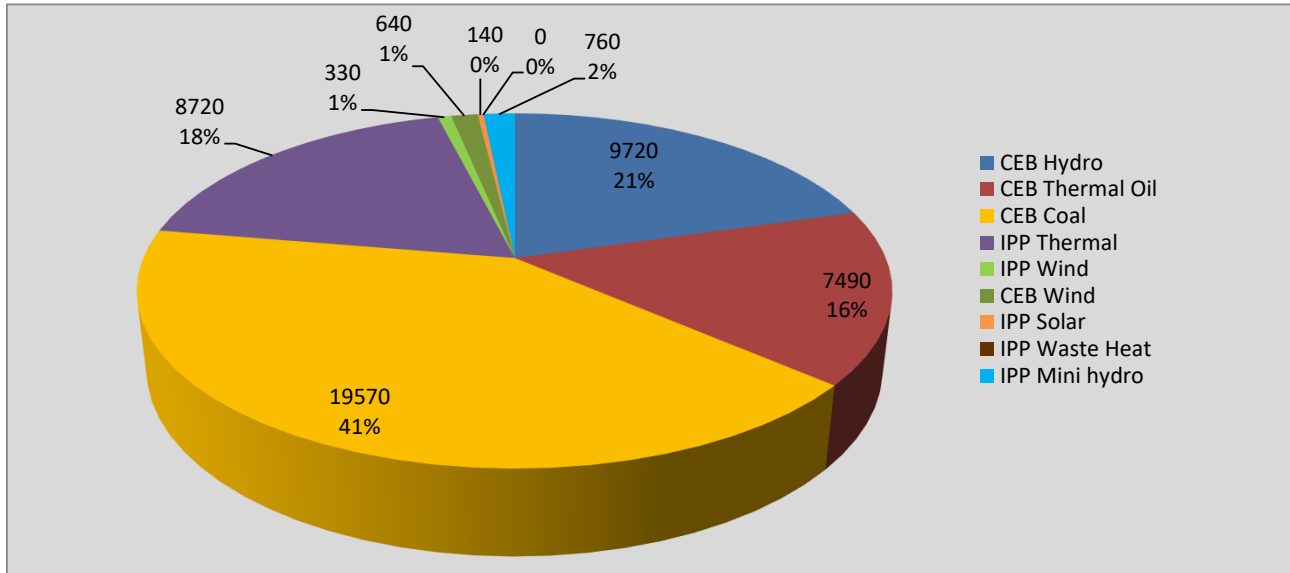
Generation and Reservoirs Statistics

February 11, 2022



PUBLIC UTILITIES COMMISSION OF SRI LANKA

Daily Generation Mix in MWh



Total Generation **47,370 MWh**

Note: Above data is excluding contribution from Roof Top Solar, 1MW Solar and certain Mini Hydro plants

Cumulative Dispatch

Note: Following data is Excluding contribution from Roof Top Solar, 1MW solar and Mini Hydro plants

For Current Month

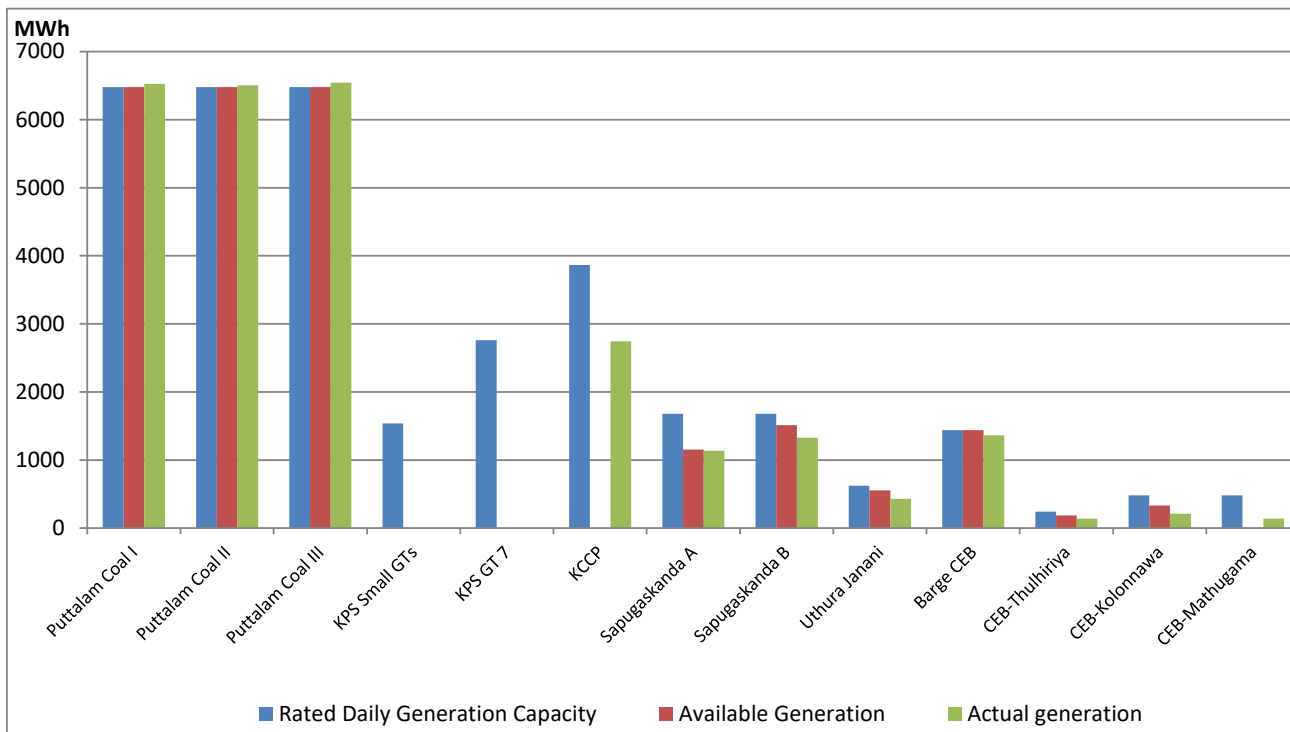
Category	Dispatch (GWh)	Percentage
CEB Hydro	116.0	23.70%
CEB Thermal Oil	68.8	14.06%
CEB Coal	205.4	41.98%
IPP Thermal	76.9	15.72%
SPP Wind	4.6	0.94%
CEB Wind	6.1	1.24%
SPP Solar	2.8	0.58%
SPP Solid Waste	1.3	0.26%
Mini Hydro	7.4	1.51%
Total	489.3	

For Current Year

Category	Dispatch (GWh)	Percentage
CEB Hydro	523.3	28.60%
CEB Thermal Oil	312.9	17.11%
CEB Coal	612.7	33.49%
IPP Thermal	281.0	15.36%
SPP Wind	19.9	1.09%
CEB Wind	24.2	1.32%
SPP Solar	10.8	0.59%
SPP Solid Waste	9.4	0.51%
Mini Hydro	35.6	1.95%
Total	1,829.5	

CEB owned Thermal Plant Dispatch

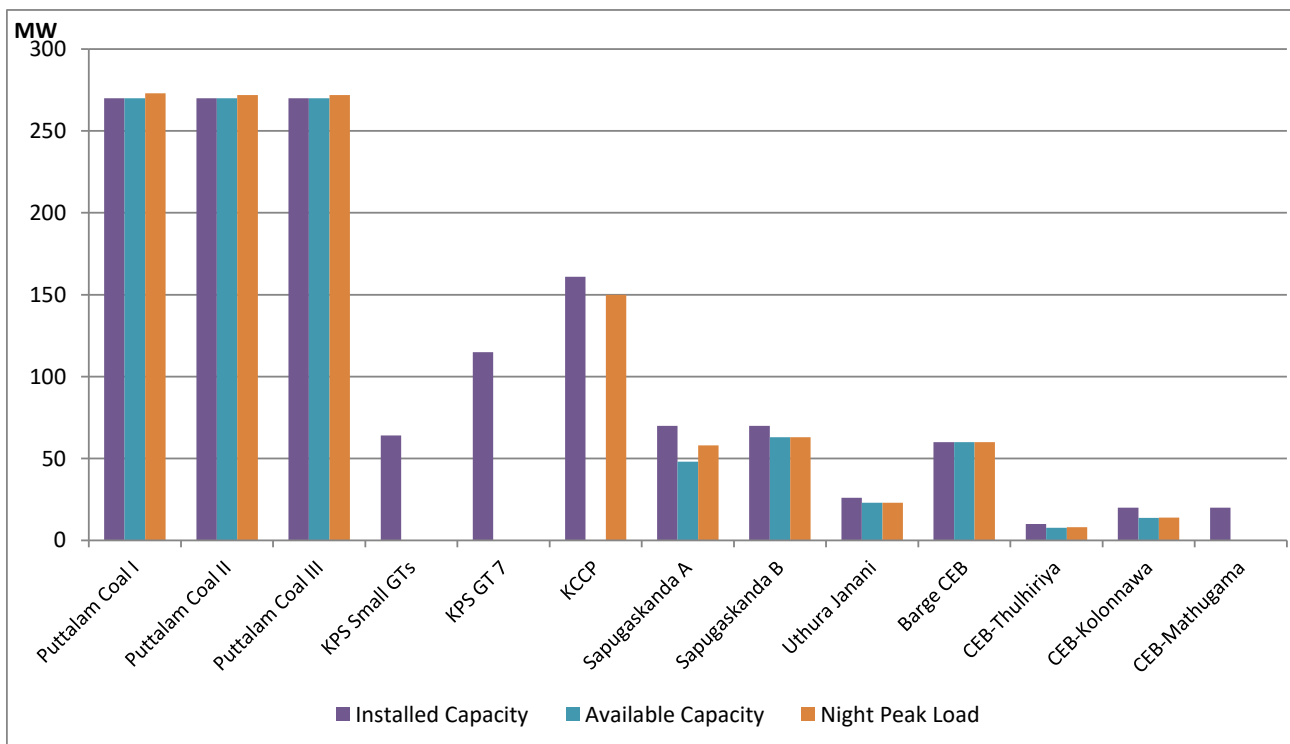
February 11, 2022



Available Generation is estimated based on plant availability at 6.00am on

February 12, 2022

CEB owned Thermal Plant Loading at the Night Peak



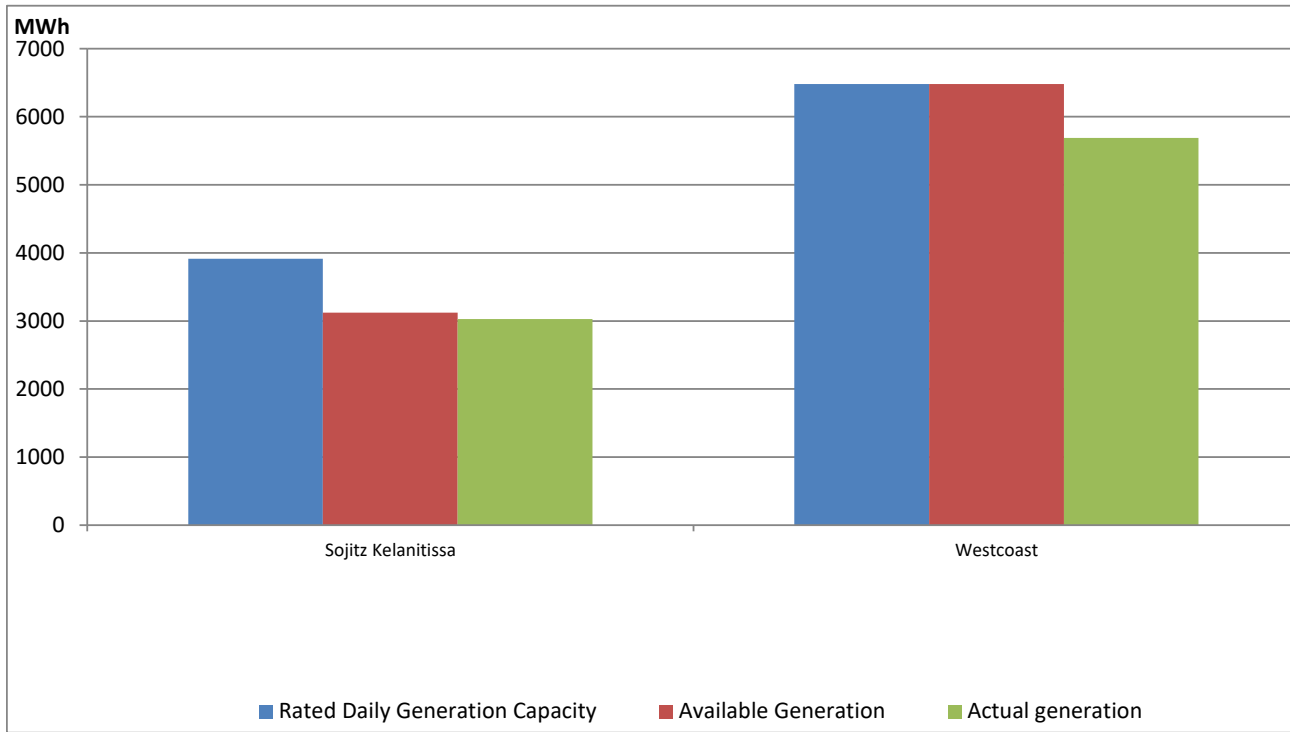
Note- Plant availability is recorded at 6.00 am on

February 12, 2022

IPP owned Thermal Plant Dispatch

February 11, 2022

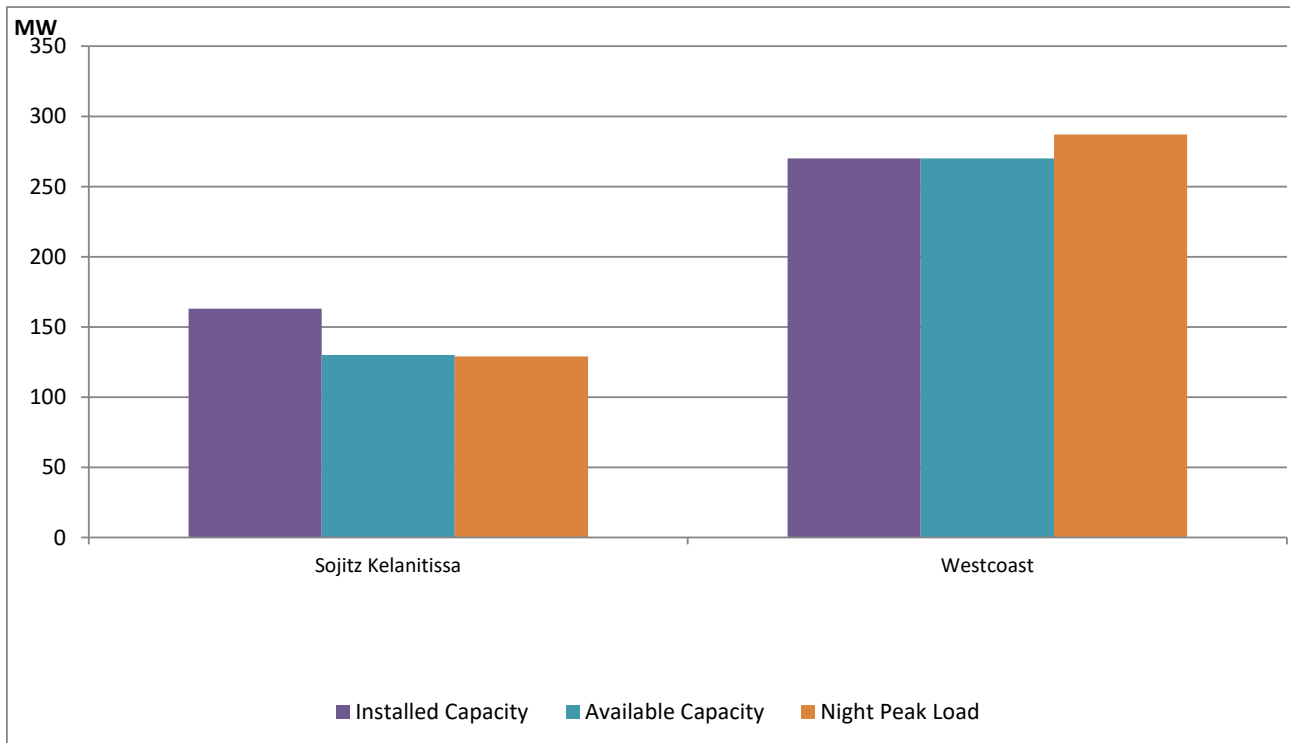
ACE Embilipitiya, ACE Matara, Asia Power, V Power Pallekale, Vpower Galle, V Power Horana, Vpower Hambantota, Vpower Valachchena and Altaqa Mahiyanganaya are not available due to expiration of PPAs



Available Generation is estimated based on plant availability at 6.00am on

February 12, 2022

IPP owned Thermal Plant Loading at the Night Peak

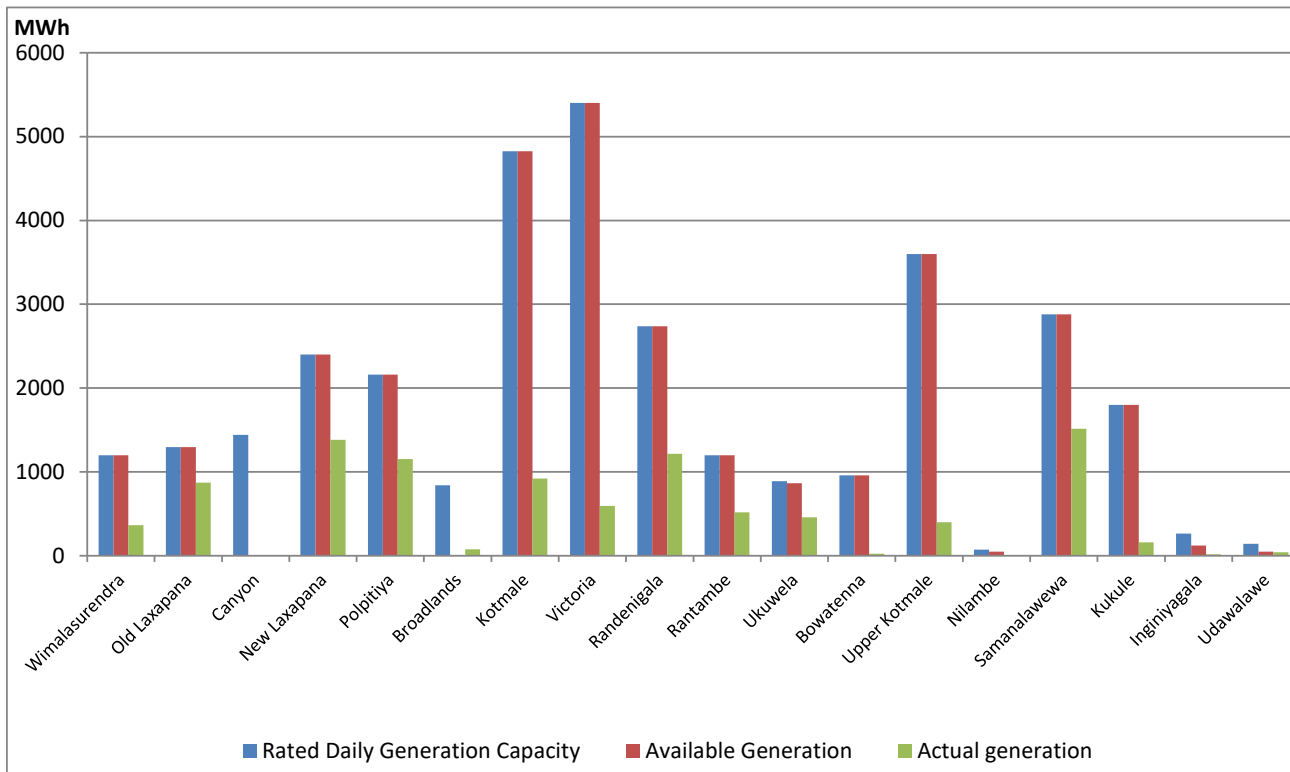


Note- Plant availability is recorded at 6.00 am on

February 12, 2022

Major Hydro Plant Dispatch

February 11, 2022

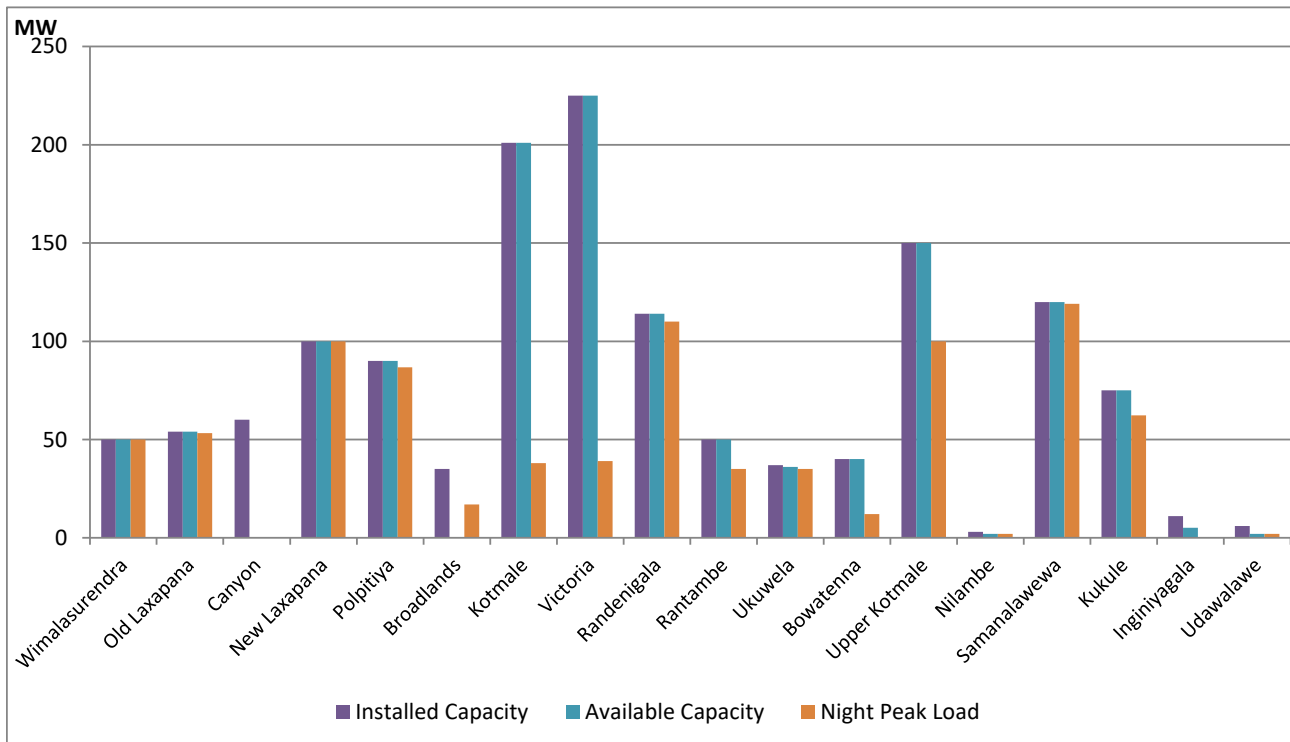


Available Generation is estimated based on plant availability at 6.00am on
Broadlands power plant is operating in the Commissioning Stage

February 12, 2022

Major Hydro Plant Loading at Night Peak

February 11, 2022



Note- Plant availability is recorded at 6.00 am on
Broadlands power plant is operating in the Commissioning Stage

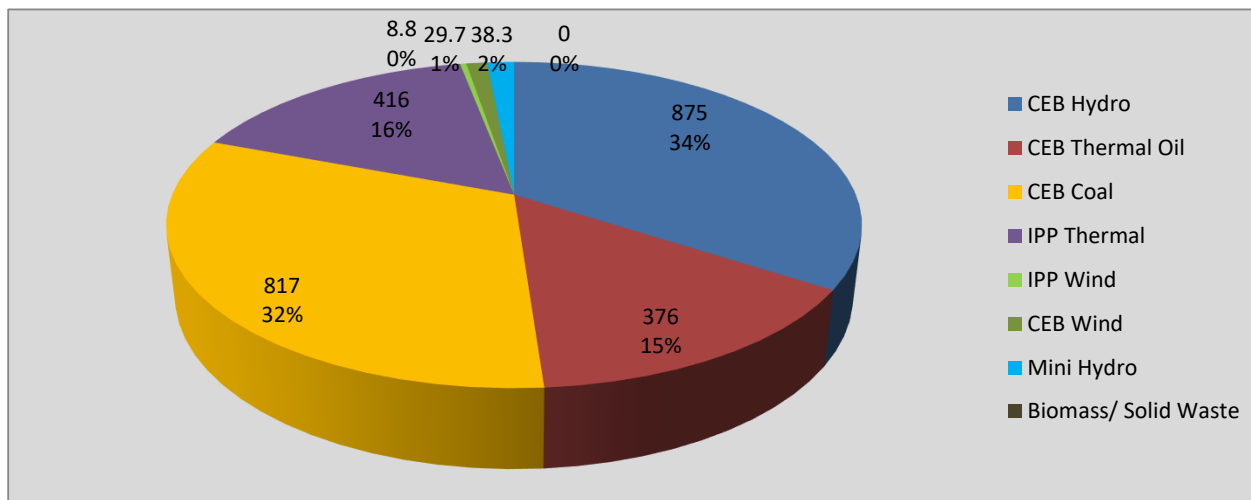
February 12, 2022

Summary of Major Plant performance

Plant	Installed Capacity (MW)	Plant Availability (MW)	Night peak Load (MW)	Plant Dispatch (MWh)
Wimalasurendra	50	50	50	365
Old Laxapana	54	54	53	871
Canyon	60	0	0	0
New Laxapana	100	100	100	1,382
Polpitiya	90	90	87	1,152
Broadlands	35	0	17	76
Kotmale	201	201	38	920
Victoria	225	225	39	593
Randenigala	114	114	110	1,217
Rantambe	50	50	35	519
Ukuwela	37	36	35	458
Bowatenna	40	40	12	24
Upper Kotmale	150	150	100	399
Nilambe	3	2	2	8
Samanalawewa	120	120	119	1,515
Kukule	75	75	62	160
Inginiyagala	11	5	0	18
Udawalawe	6	2	2	41
Puttalam Coal I	270	270	273	6,525
Puttalam Coal II	270	270	272	6,506
Puttalam Coal III	270	270	272	6,541
KPS Small GTs	64	0	0	0
KPS GT 7	115	0	0	0
KCCP	161	0	150	2,744
Sapugaskanda A	70	48	58	1,137
Sapugaskanda B	70	63	63	1,327
Uthura Janani	26	23	23	430
Barge CEB	60	60	60	1,363
CEB-Thulhiriya	10	8	8	137
CEB-Kolonnawa	20	14	14	213
CEB-Mathugama	20	0	0	137
Sojitz Kelanitissa	163	130	129	3,028
West Coast	270	270	287	5,688
Total	3,280	2,740	2,547	47,369

Plant availability is the availability recorded at 6 am on

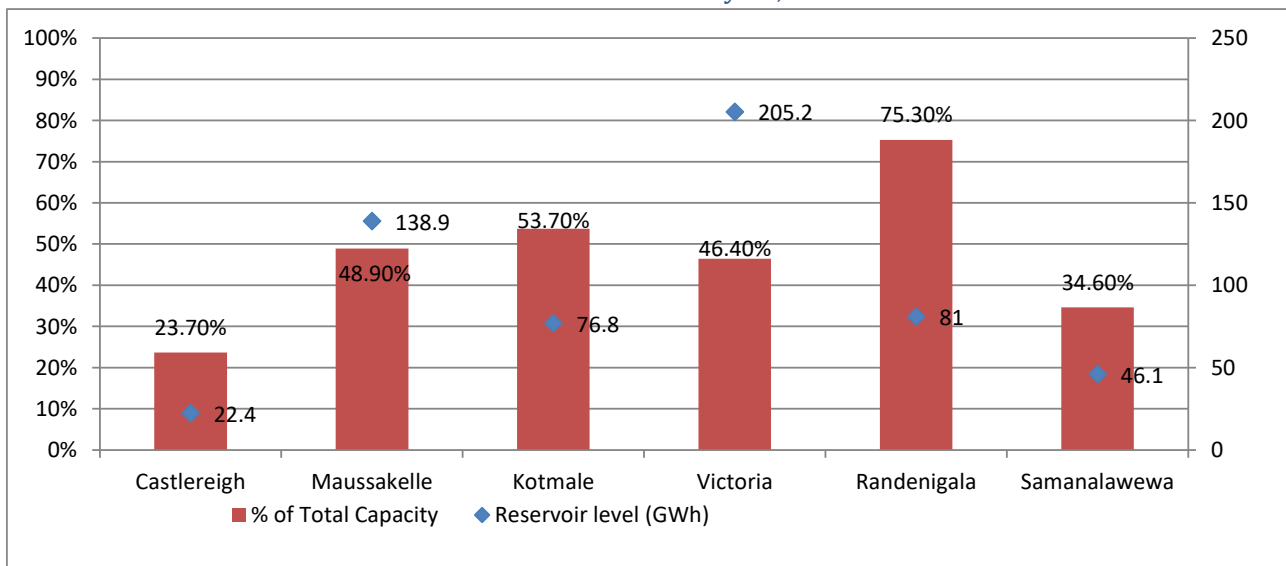
February 12, 2022



Night Peak* 2,561.0 MW
 Day Peak 2,251.5 MW
 Minimum Demand 1,397.7 MW

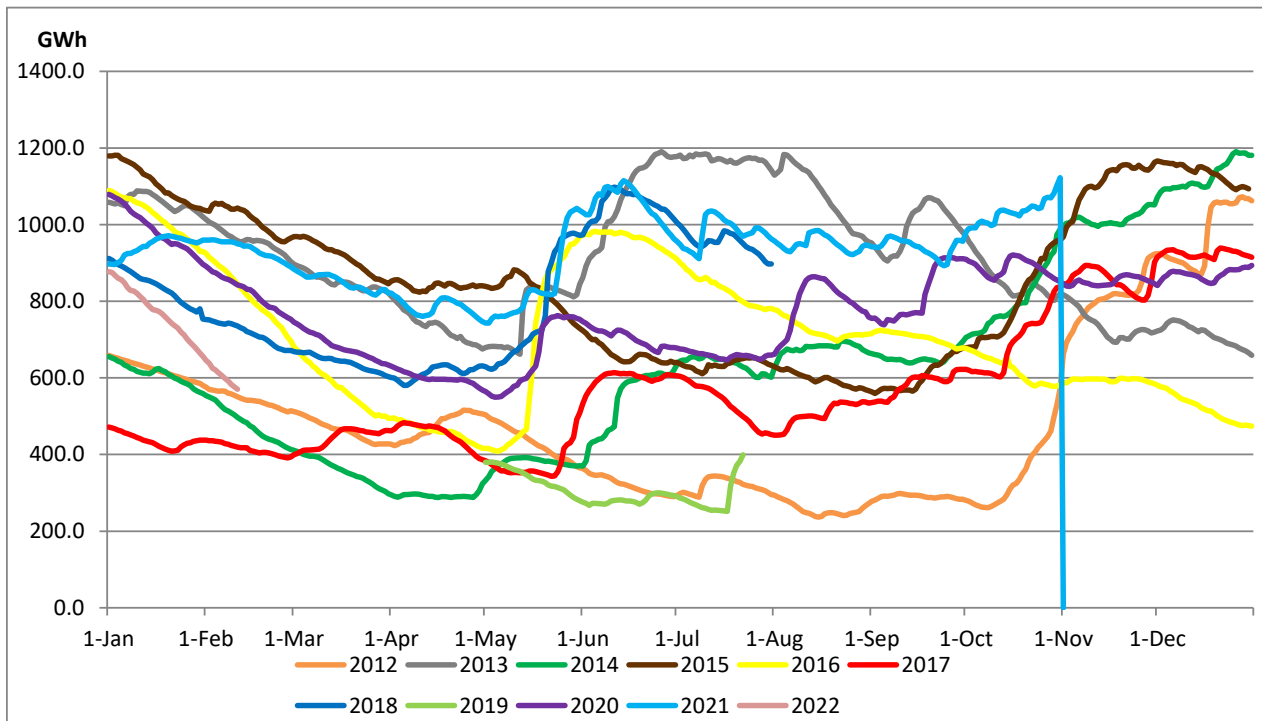
Above figures are excluding contribution from Roof Top Solar, 1MW solar, certain Wind plants and Mini Hydro plants

Reservoir Levels - as at 06.00 Hr on February 12, 2022



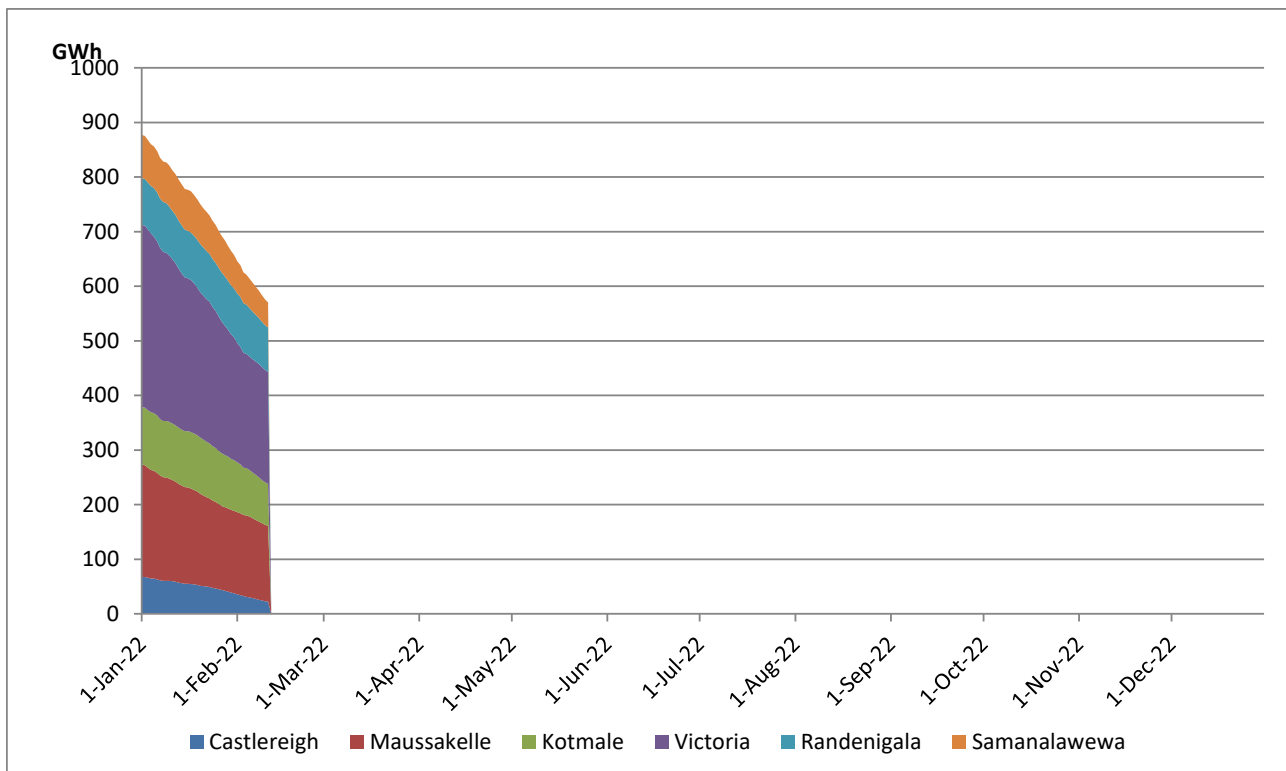
Total Reservoir Level(GWh) 570.4
 % of Total capacity 47.1%

Comparison of Total Reservoir Storage Levels with Past Years

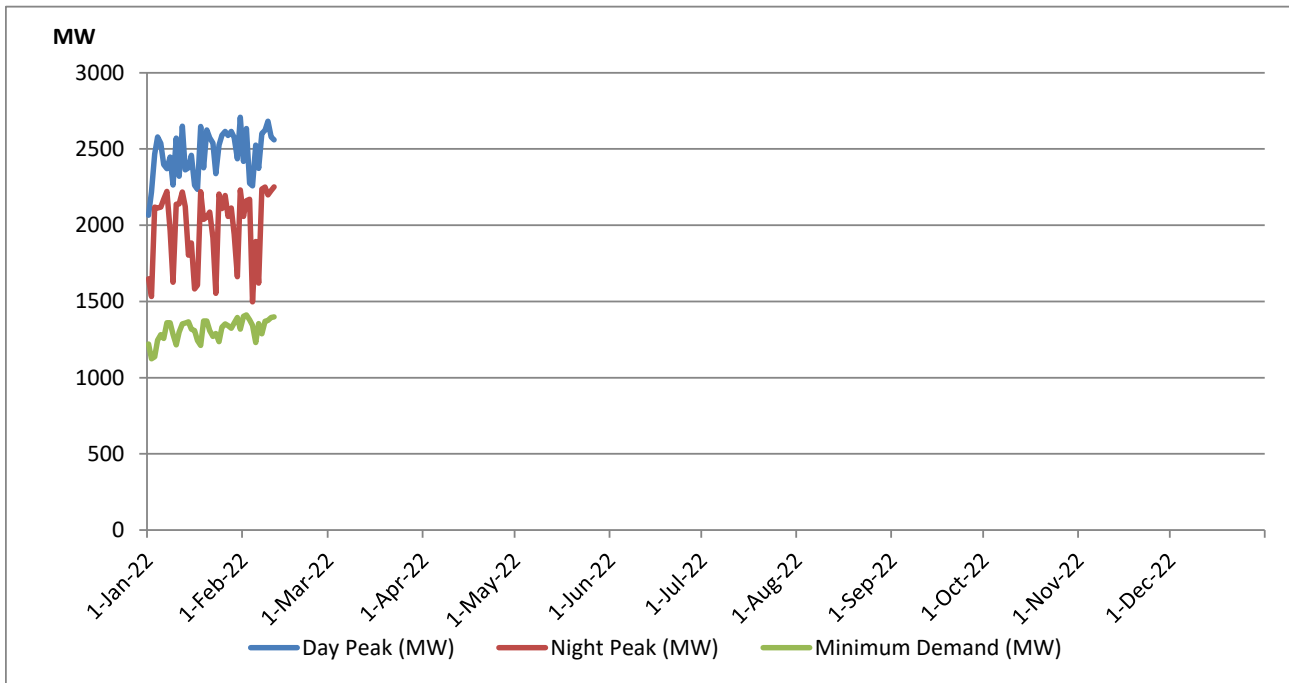


Data for 2018 and 2019 are only available for part of year.

Variation of Major Hydro Reservoir Levels in the current year (GWh)



Variation of Demand during the current year

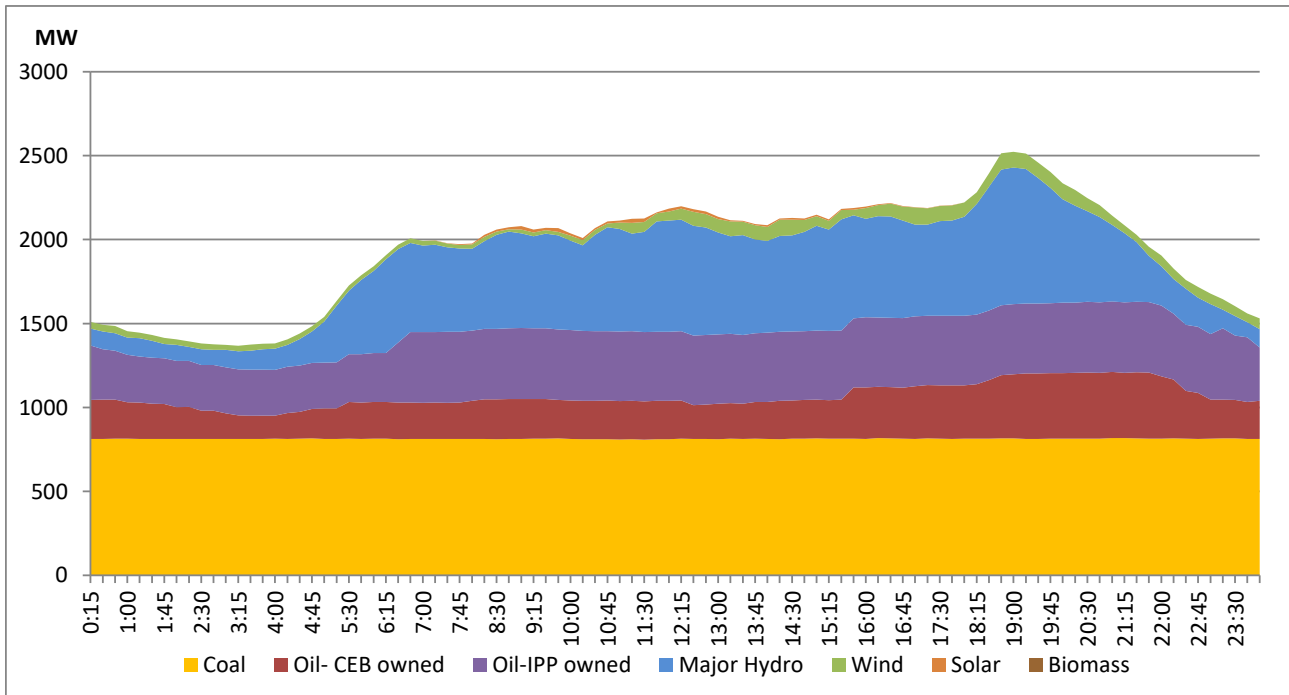


The above figures are excluding contribution from Roof Top Solar, 1MW solar, certain Wind plants and Mini Hydro plants

Daily Load Curve of the Previous day

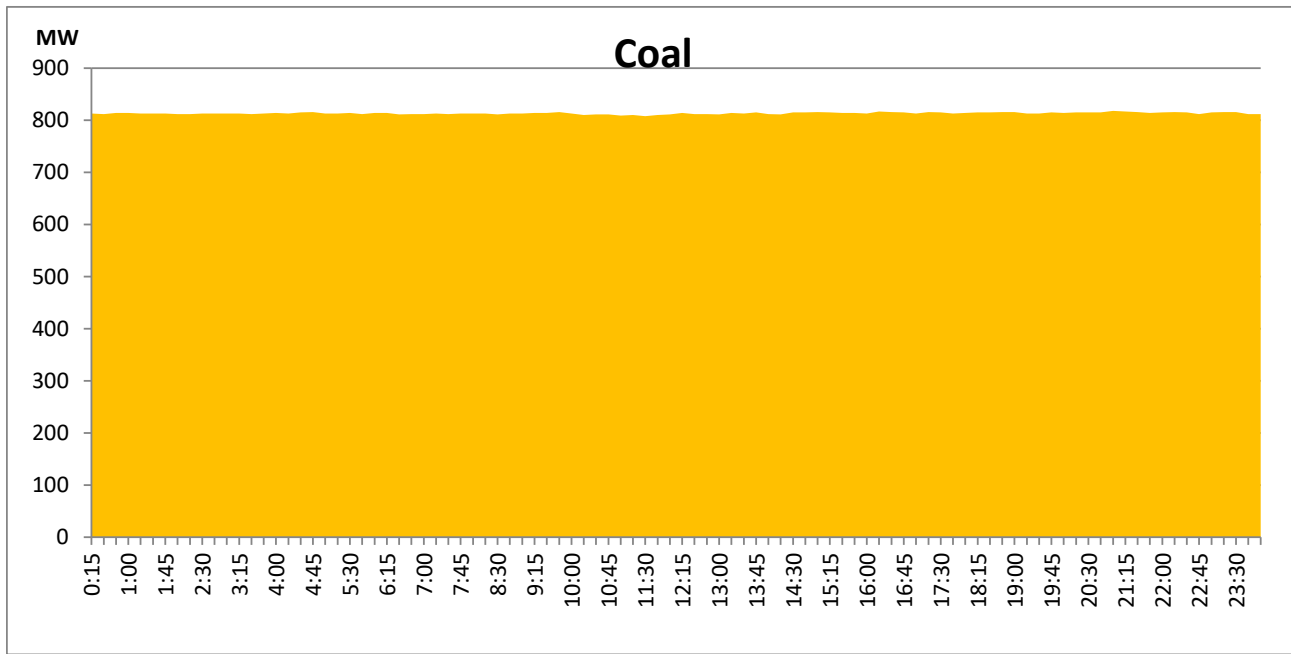
February 10, 2022

Solar and wind data is based on Telemetered Power Stations only



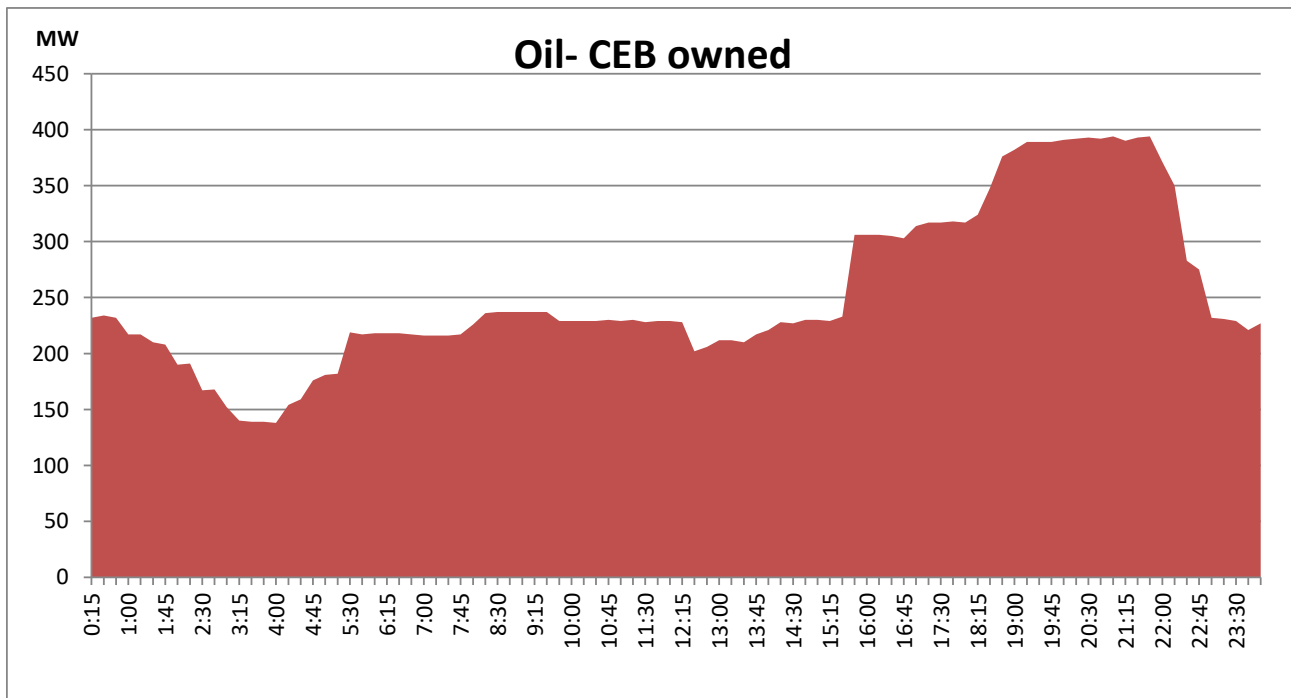
Coal Generation during the Previous day

February 10, 2022



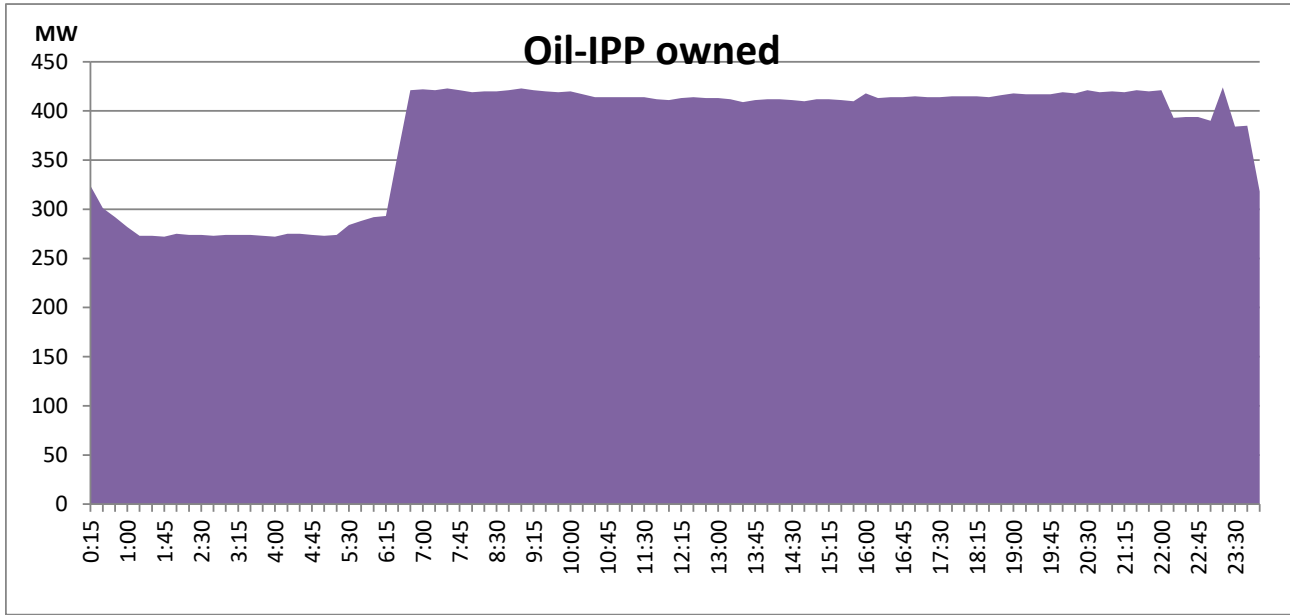
CEB Oil Plant Generation during the Previous day

February 10, 2022



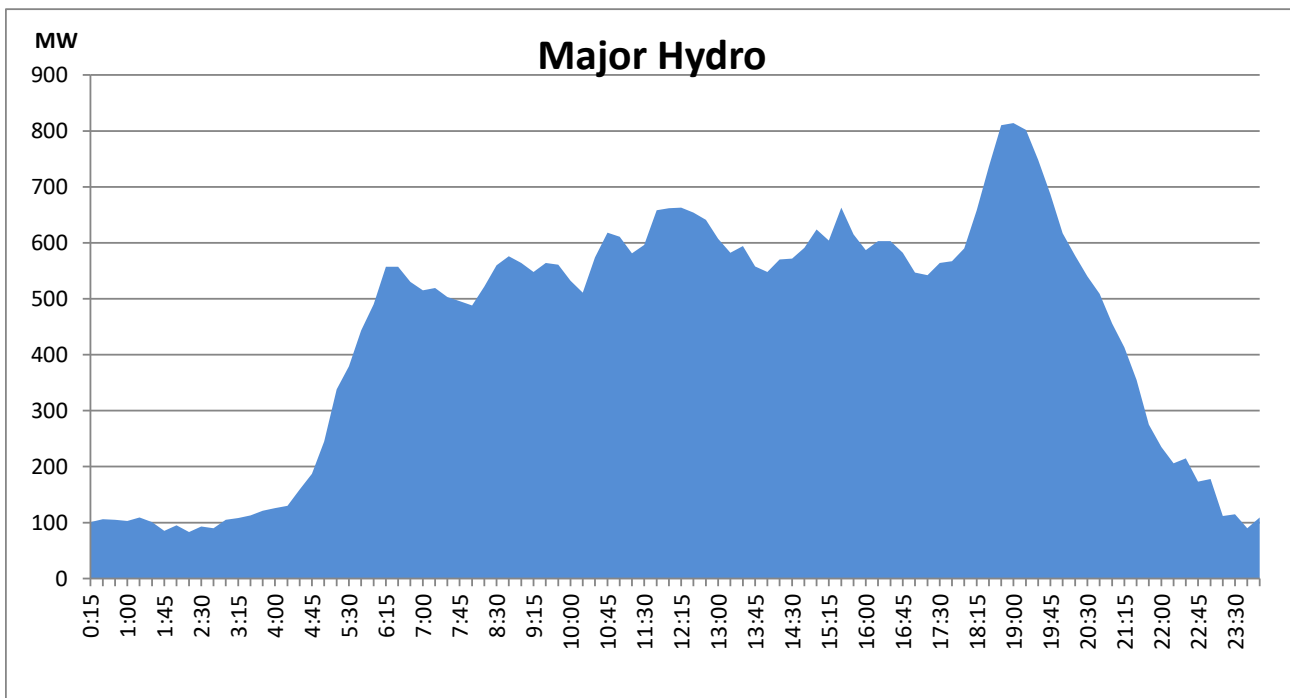
IPP Oil Plant Generation during the Previous day

February 10, 2022



Major Hydro Generation during the Previous day

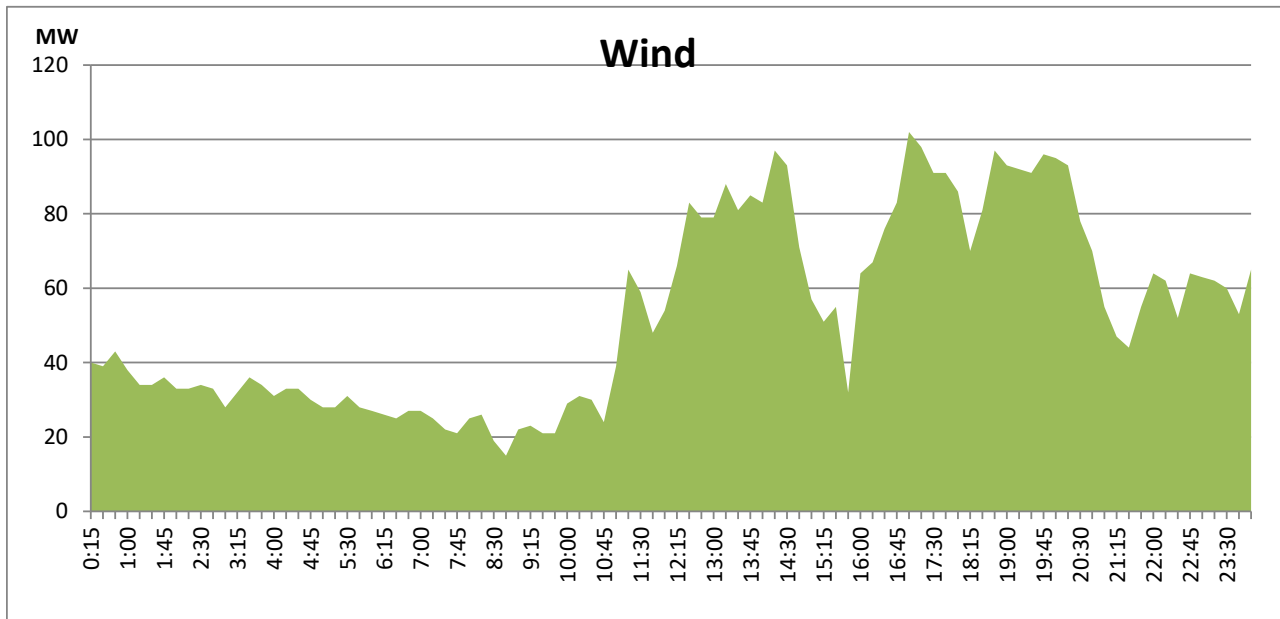
February 10, 2022



Wind Generation during the Previous day

February 10, 2022

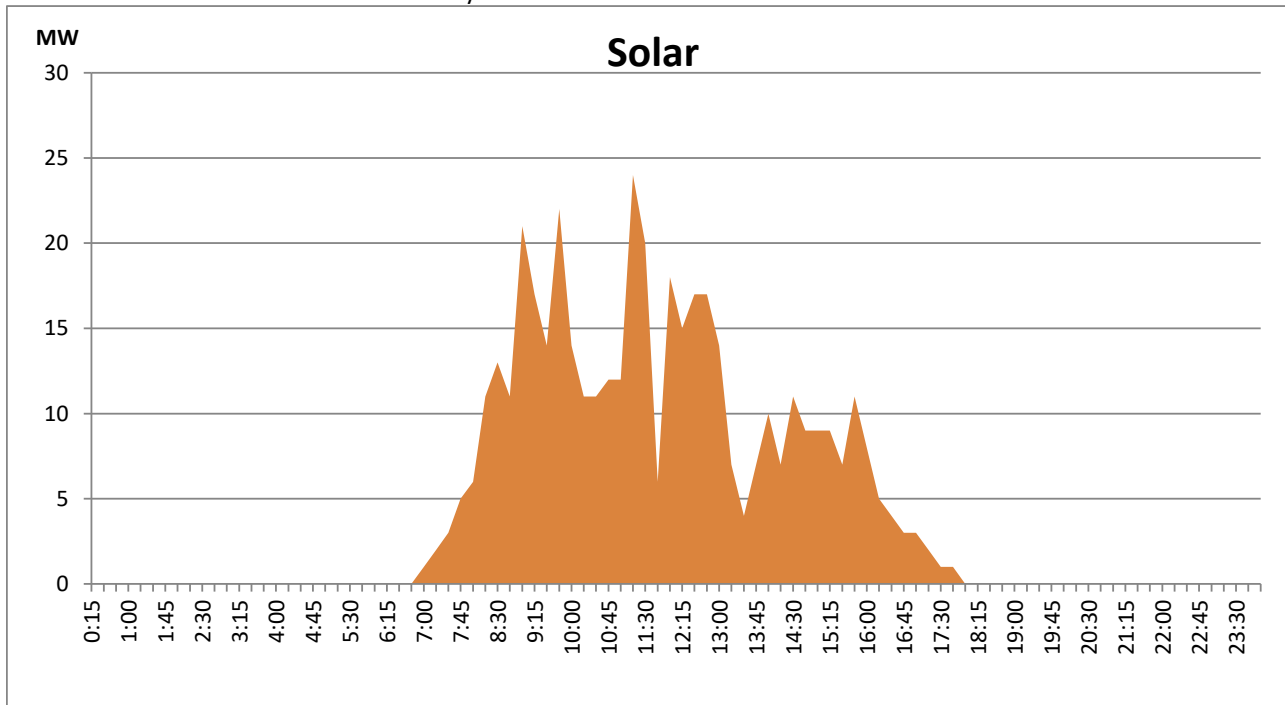
Based on Telemetered Power Stations only



Solar Generation during the Previous day

February 10, 2022

Based on Telemetered Power Stations only



Thermal Plant Fuel types

Power Station	Primary Fuel
CEB Thermal	
Sapugaskanda 1	Heavy Fuel
Sapugaskanda 2	Heavy Fuel
Kelanitissa Small Gas Turbines	Auto Diesel
GT 7 - Kelanitissa	Auto Diesel
Kelanitissa CCY	Naptha & Diesel
Lakvijaya 1	Coal
Lakvijaya 2	Coal
Lakvijaya 3	Coal
Uthuru Janani	Heavy Fuel
Barge CEB	Furnace Oil

Power Station	Primary Fuel
Private Thermal	
Sojitz - Kelanitissa	Auto Diesel
West Coast	Low Sulphur Furnace oil

Major Incidents during the day -as reported by CEB morning of

February 12, 2022

2) KPS-DPP Mathugama plant made forced shutdown at 20:00 hrs due to fuel unavailability.