

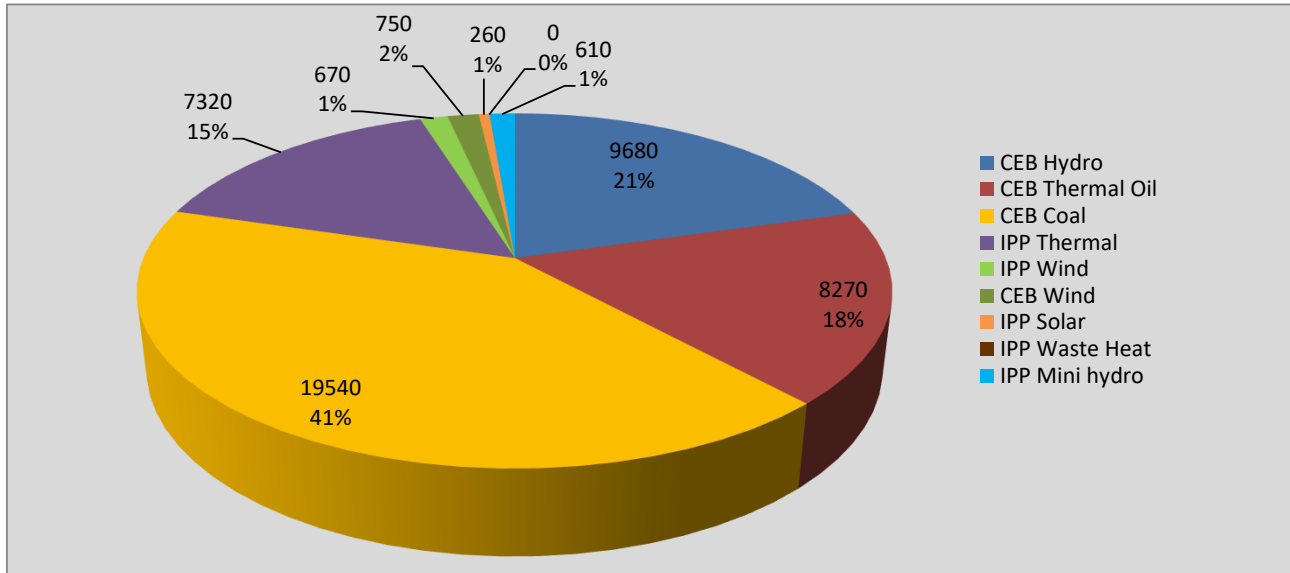
# **Generation and Reservoirs Statistics**

**February 9, 2022**



PUBLIC UTILITIES COMMISSION OF SRI LANKA

## Daily Generation Mix in MWh



Total Generation

47,100 MWh

Note: Above data is excluding contribution from Roof Top Solar, 1MW Solar and certain Mini Hydro plants

## Cumulative Dispatch

Note: Following data is Excluding contribution from Roof Top Solar, 1MW solar and Mini Hydro plants

### For Current Month

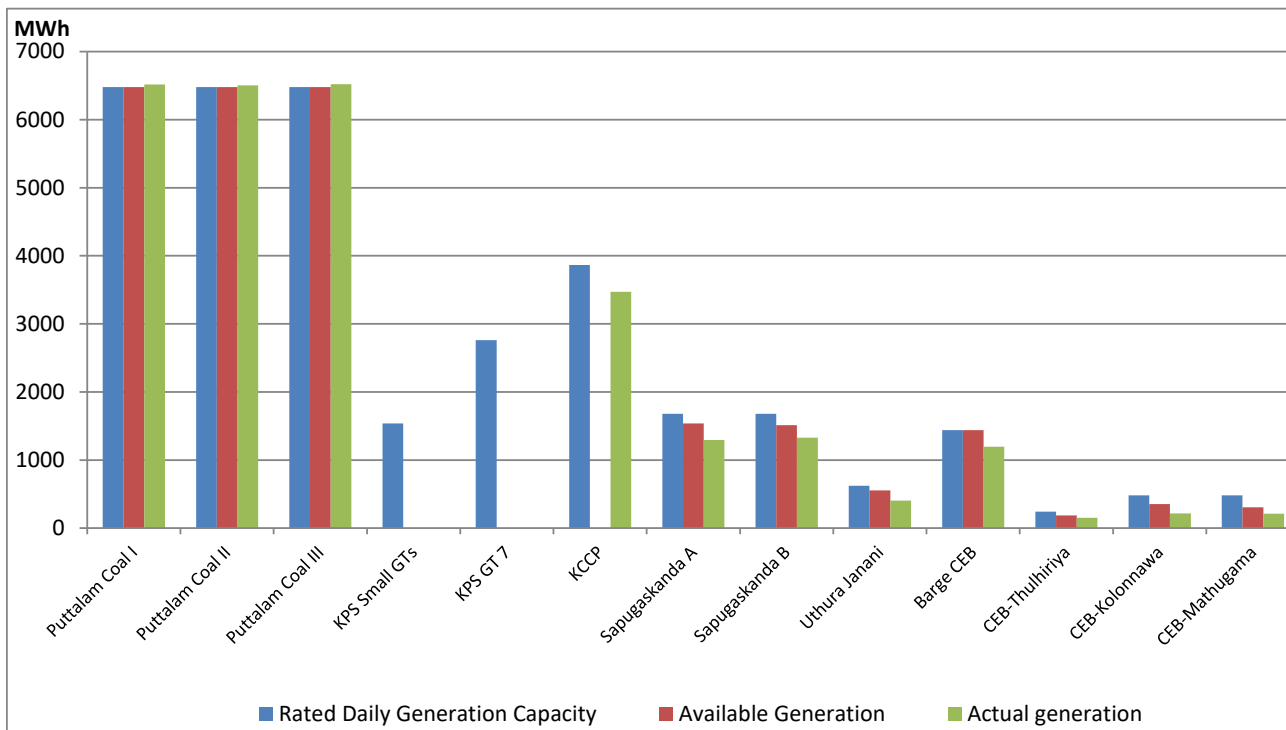
Category	Dispatch (GWh)	Percentage
CEB Hydro	95.6	24.23%
CEB Thermal Oil	55.2	13.99%
CEB Coal	166.3	42.16%
IPP Thermal	59.4	15.05%
SPP Wind	3.8	0.95%
CEB Wind	4.5	1.14%
SPP Solar	2.5	0.64%
SPP Solid Waste	1.3	0.32%
Mini Hydro	6.0	1.52%
<b>Total</b>	<b>394.5</b>	

### For Current Year

Category	Dispatch (GWh)	Percentage
CEB Hydro	502.9	28.99%
CEB Thermal Oil	299.3	17.26%
CEB Coal	573.6	33.07%
IPP Thermal	263.4	15.19%
SPP Wind	19.1	1.10%
CEB Wind	22.6	1.30%
SPP Solar	10.4	0.60%
SPP Solid Waste	9.4	0.54%
Mini Hydro	34.2	1.97%
<b>Total</b>	<b>1,734.6</b>	

## CEB owned Thermal Plant Dispatch

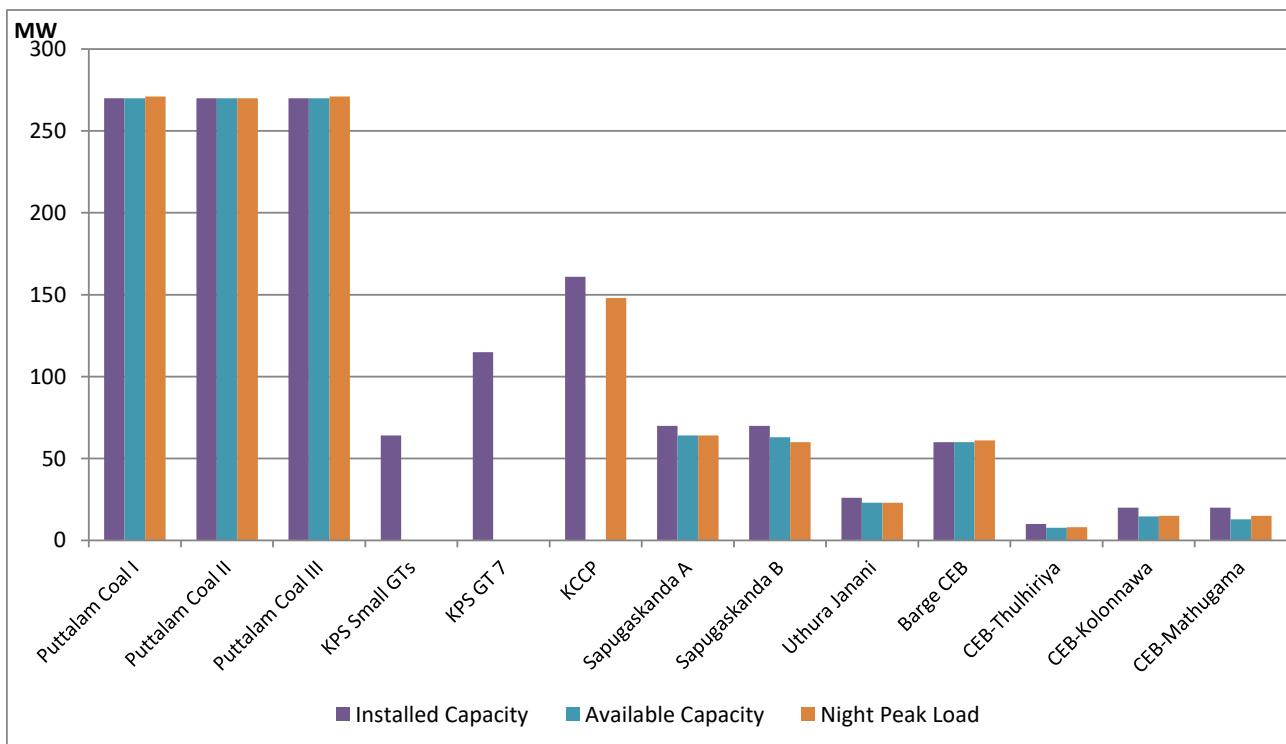
February 9, 2022



Available Generation is estimated based on plant availability at 6.00am on

February 10, 2022

## CEB owned Thermal Plant Loading at the Night Peak



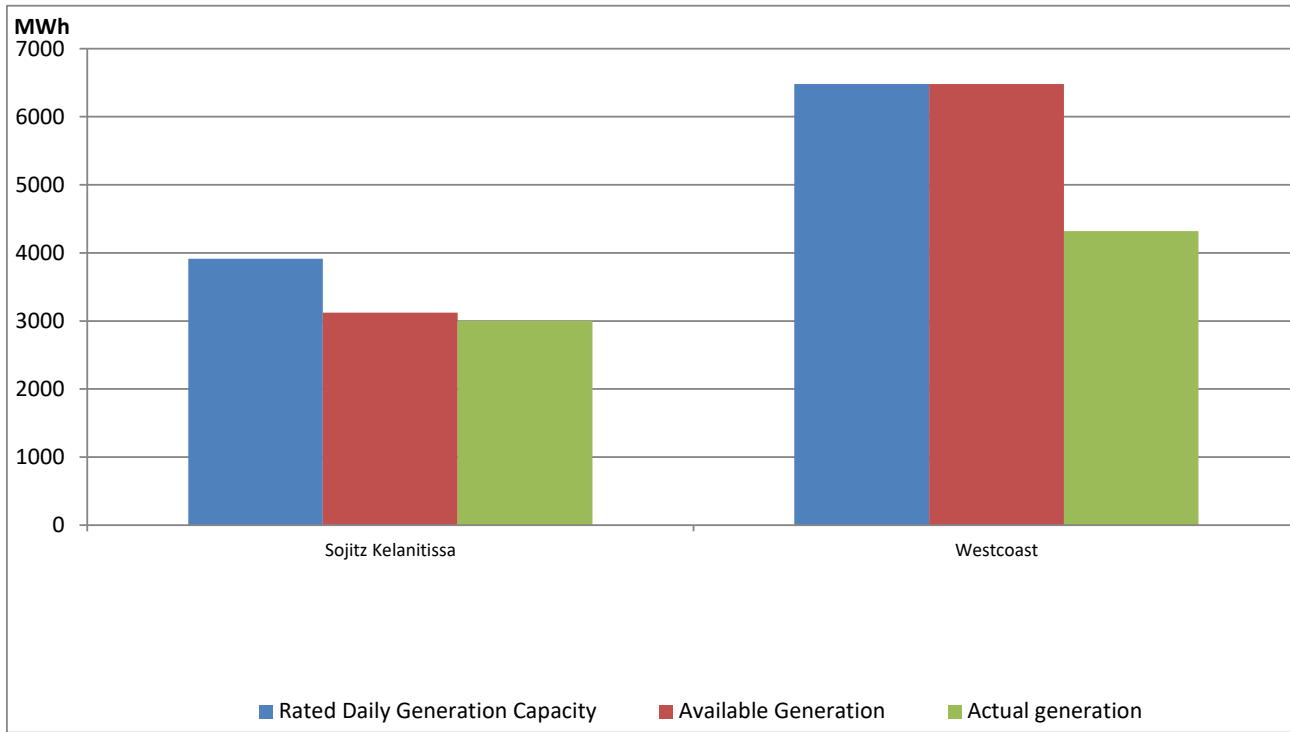
Note- Plant availability is recorded at 6.00 am on

February 10, 2022

## IPP owned Thermal Plant Dispatch

February 9, 2022

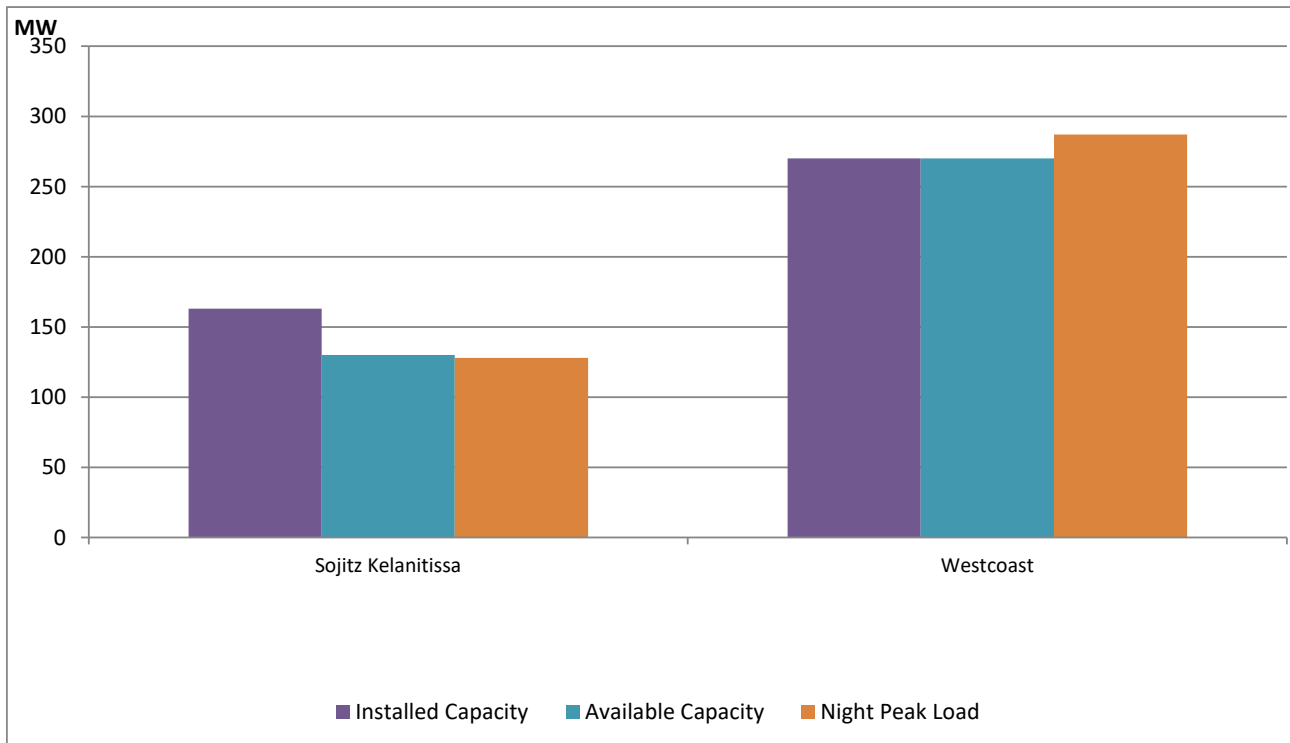
ACE Embilipitiya, ACE Matara, Asia Power, V Power Pallekale, Vpower Galle, V Power Horana, Vpower Hambantota, Vpower Valachchena and Altaqa Mahiyanganaya are not available due to expiration of PPAs



Available Generation is estimated based on plant availability at 6.00am on

February 10, 2022

## IPP owned Thermal Plant Loading at the Night Peak

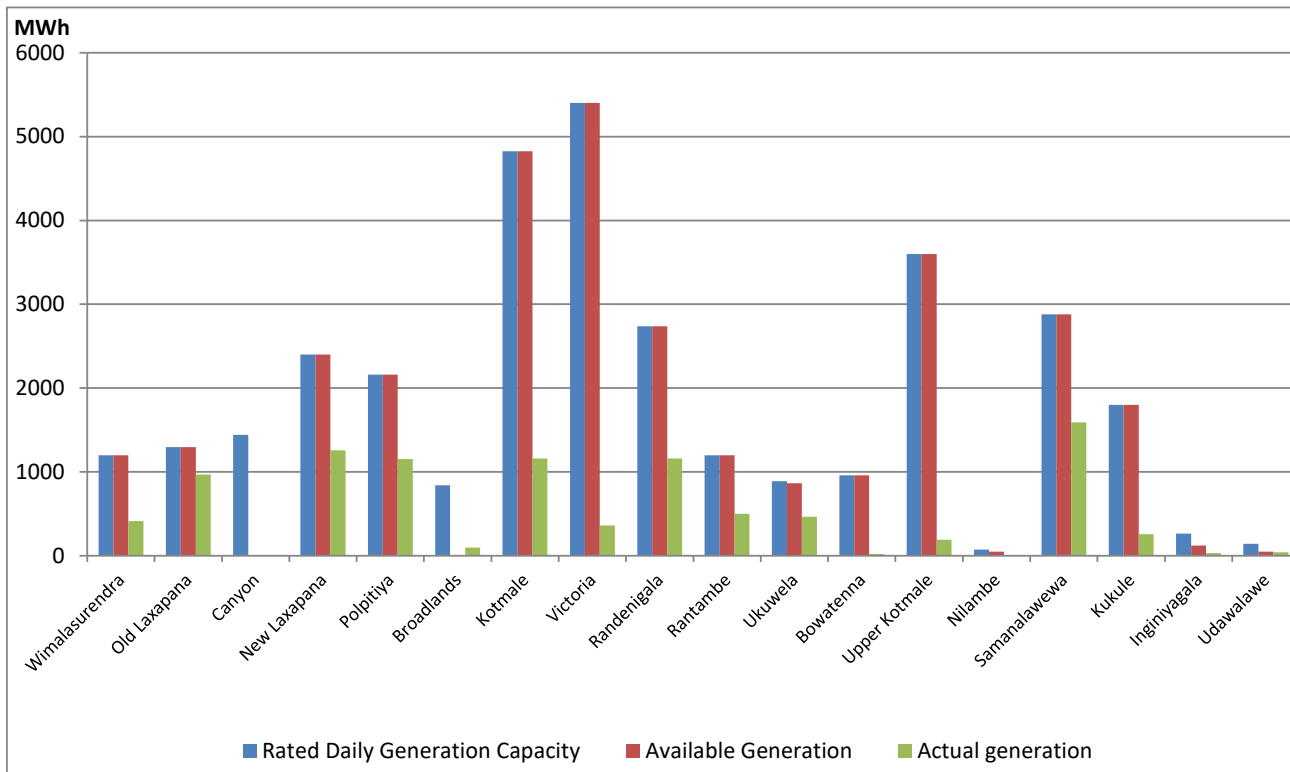


Note- Plant availability is recorded at 6.00 am on

February 10, 2022

## Major Hydro Plant Dispatch

February 9, 2022

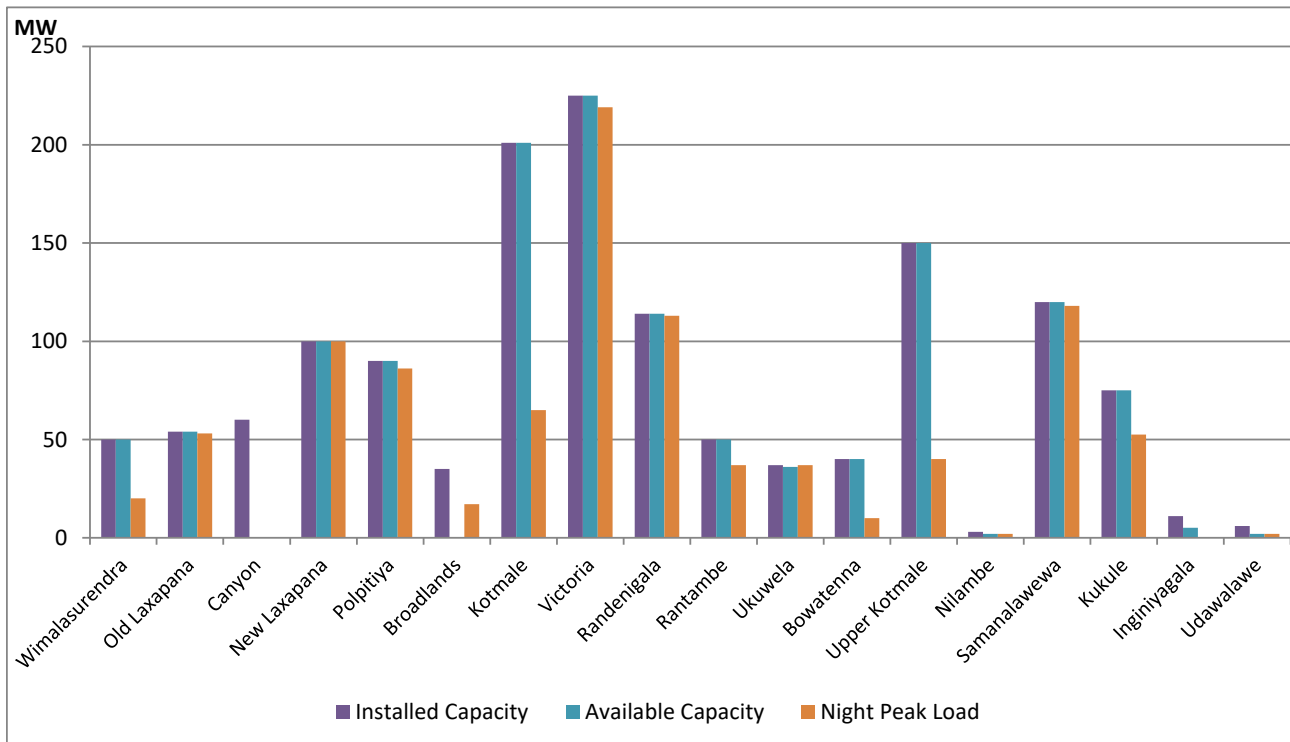


Available Generation is estimated based on plant availability at 6.00am on  
Broadlands power plant is operating in the Commissioning Stage

February 10, 2022

## Major Hydro Plant Loading at Night Peak

February 9, 2022



Note- Plant availability is recorded at 6.00 am on  
Broadlands power plant is operating in the Commissioning Stage

February 10, 2022

## Summary of Major Plant performance

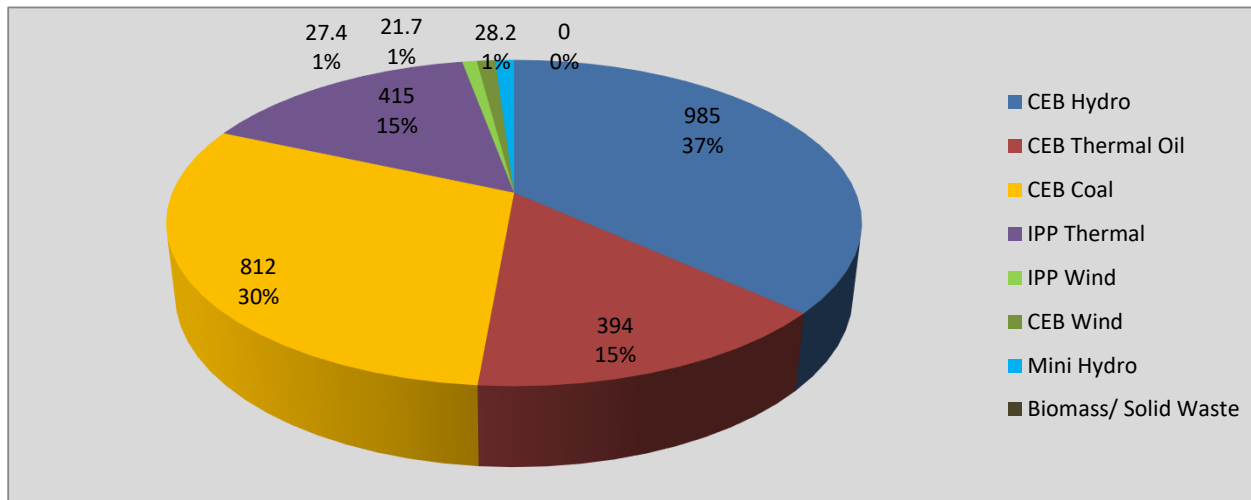
Plant	Installed Capacity (MW)	Plant Availability (MW)	Night peak Load (MW)	Plant Dispatch (MWh)
Wimalasurendra	50	50	20	412
Old Laxapana	54	54	53	969
Canyon	60	0	0	0
New Laxapana	100	100	100	1,259
Polpitiya	90	90	86	1,152
Broadlands	35	0	17	96
Kotmale	201	201	65	1,160
Victoria	225	225	219	361
Randenigala	114	114	113	1,160
Rantambe	50	50	37	502
Ukuwela	37	36	37	467
Bowatenna	40	40	10	21
Upper Kotmale	150	150	40	192
Nilambe	3	2	2	5
Samanalawewa	120	120	118	1,592
Kukule	75	75	53	256
Inginiyagala	11	5	0	30
Udawalawe	6	2	2	43
Puttalam Coal I	270	270	271	6,518
Puttalam Coal II	270	270	270	6,505
Puttalam Coal III	270	270	271	6,521
KPS Small GTs	64	0	0	0
KPS GT 7	115	0	0	0
KCCP	161	0	148	3,470
Sapugaskanda A	70	64	64	1,293
Sapugaskanda B	70	63	60	1,329
Uthura Janani	26	23	23	404
Barge CEB	60	60	61	1,197
CEB-Thulhiriya	10	8	8	150
CEB-Kolonnawa	20	15	15	217
CEB-Mathugama	20	13	15	210
Sojitz Kelanitissa	163	130	128	3,001
West Coast	270	270	287	4,320
Total	3,280	2,769	2,670	47,102

Plant availability is the availability recorded at 6 am on

February 10, 2022

# Contribution to the Night Peak in MW

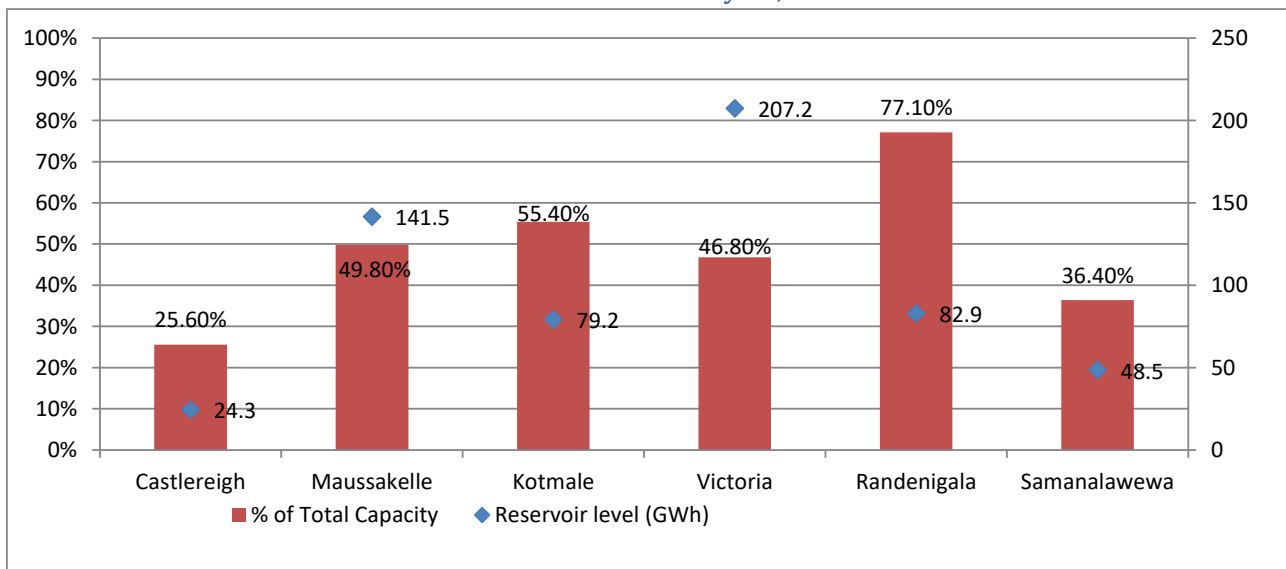
February 9, 2022



Night Peak*	2,683.1 MW
Day Peak	2,200.0 MW
Minimum Demand	1,376.5 MW

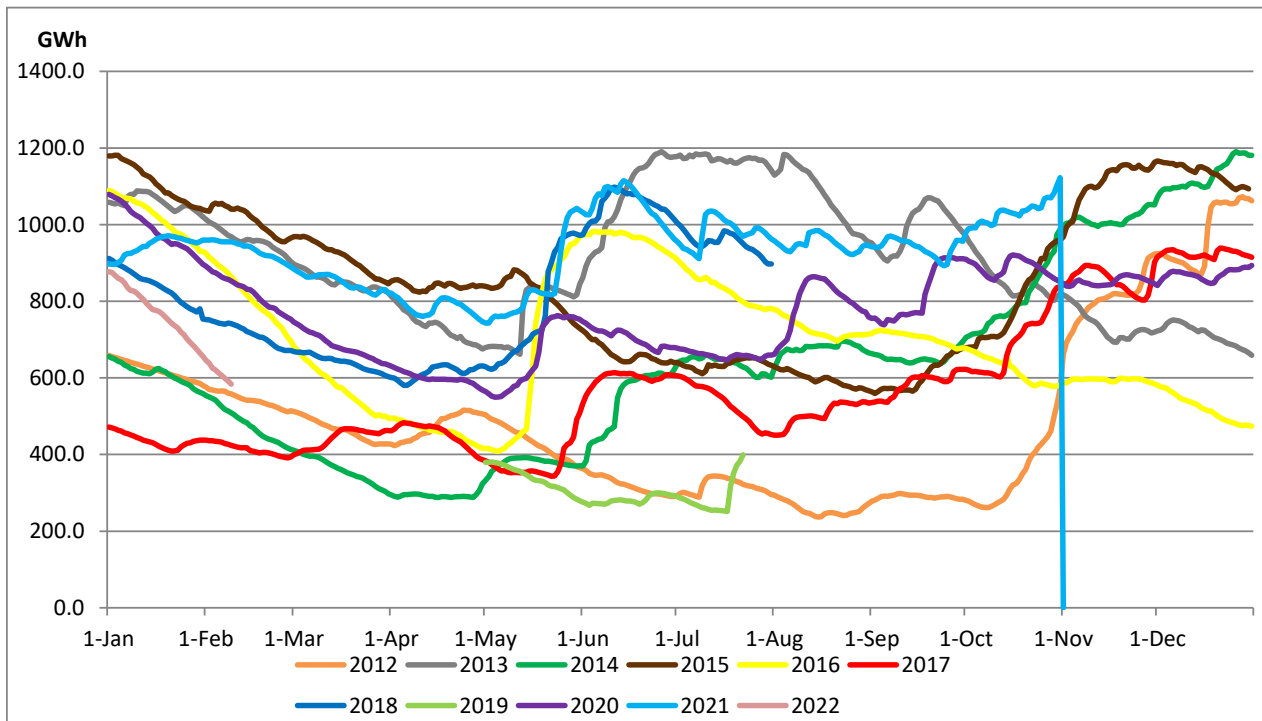
Above figures are excluding contribution from Roof Top Solar, 1MW solar, certain Wind plants and Mini Hydro plants

## Reservoir Levels - as at 06.00 Hr on February 10, 2022



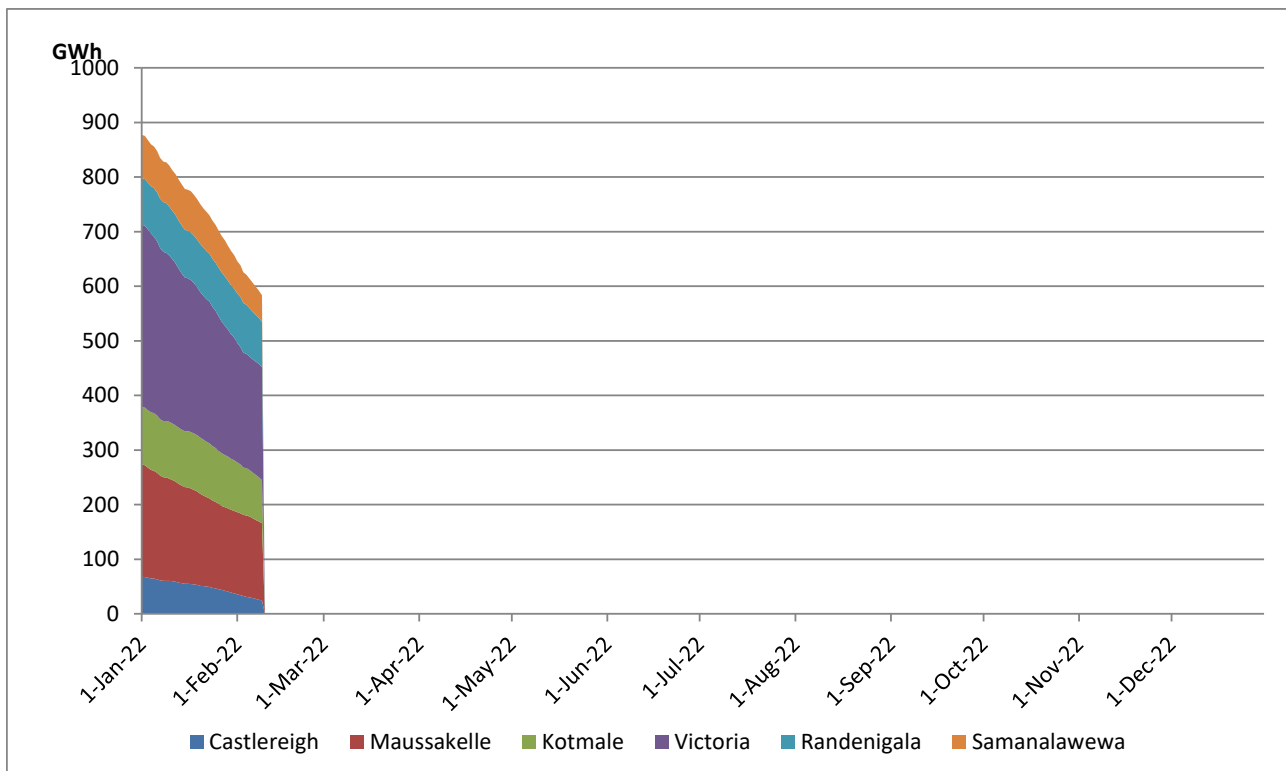
Total Reservoir Level(GWh)	583.6
% of Total capacity	48.5%

## Comparison of Total Reservoir Storage Levels with Past Years



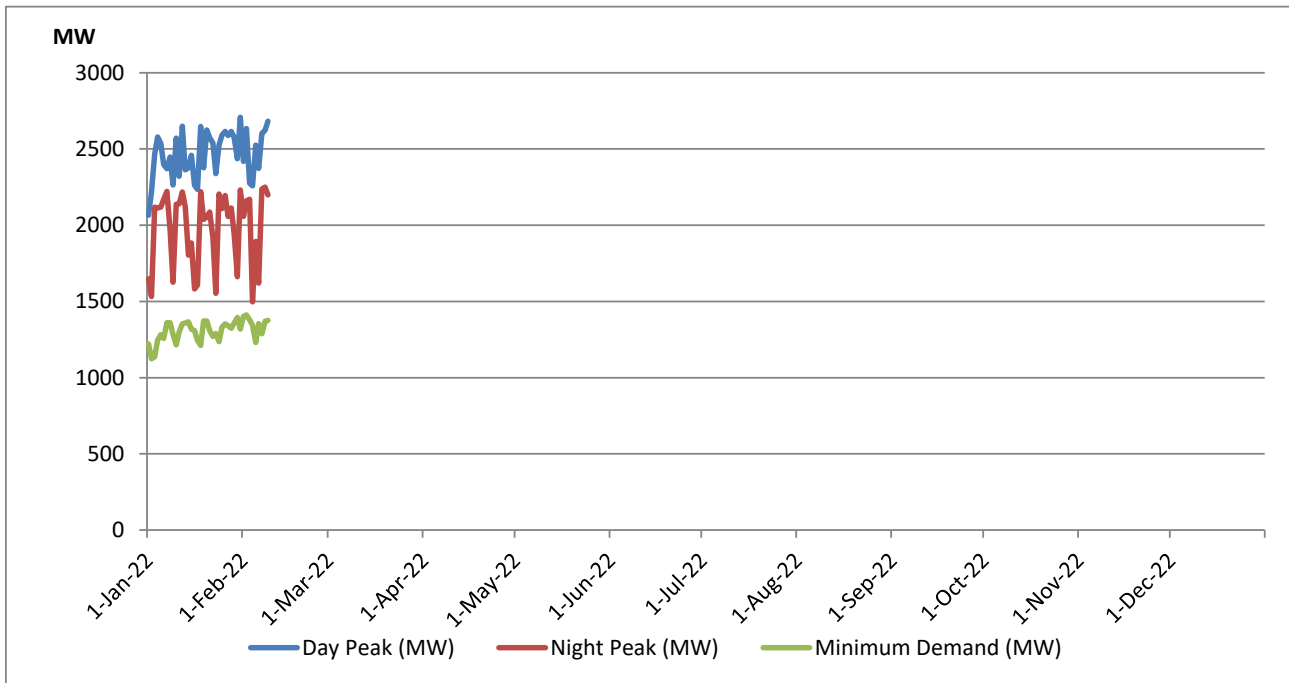
Data for 2018 and 2019 are only available for part of year.

## Variation of Major Hydro Reservoir Levels in the current year (GWh)





## Variation of Demand during the current year

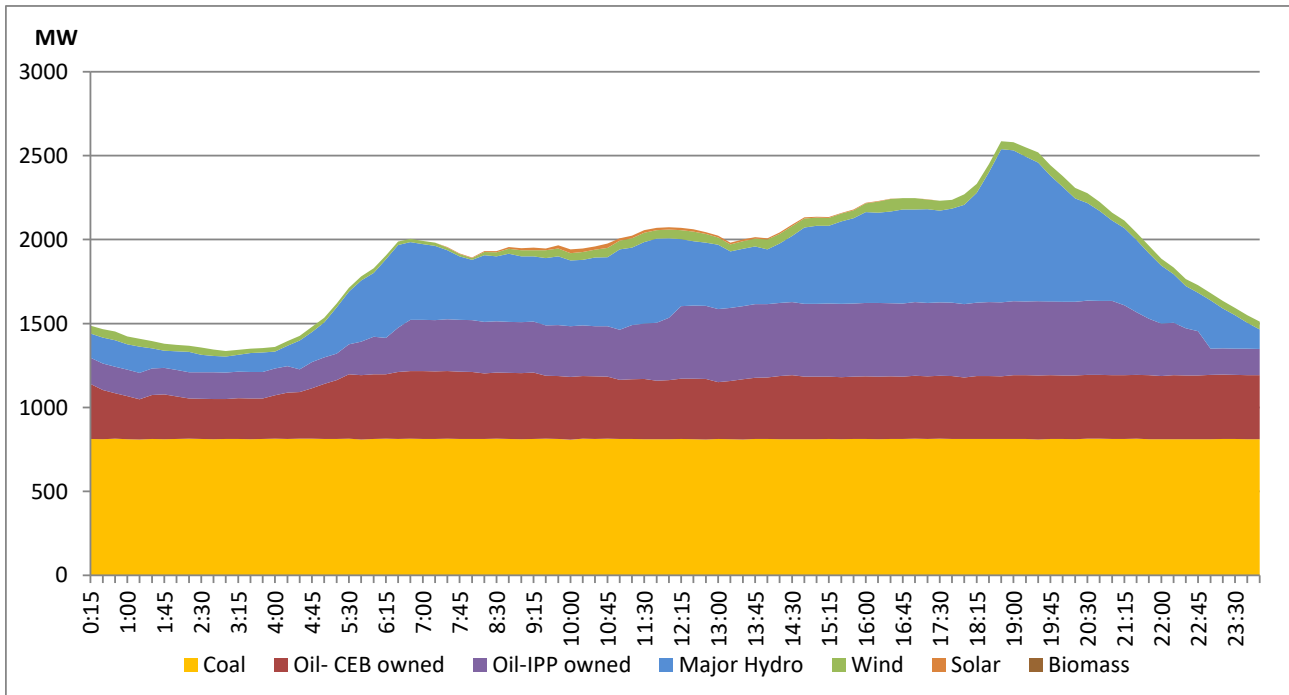


The above figures are excluding contribution from Roof Top Solar, 1MW solar, certain Wind plants and Mini Hydro plants

## Daily Load Curve of the Previous day

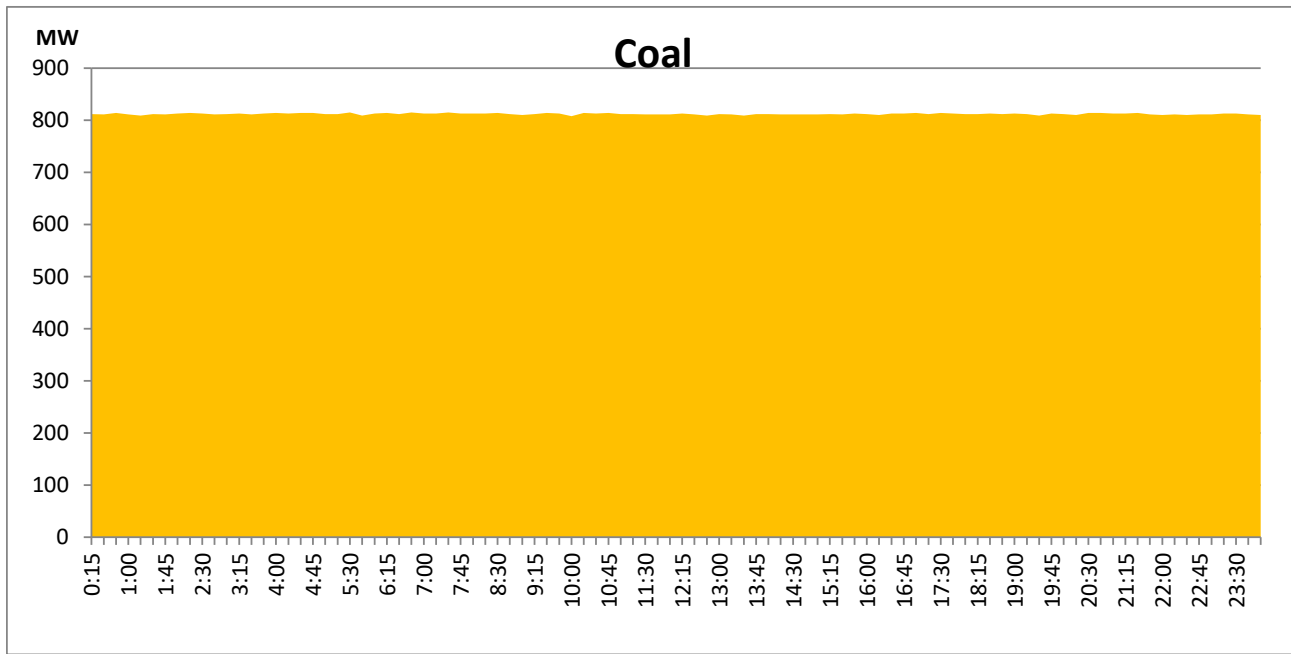
February 8, 2022

Solar and wind data is based on Telemetered Power Stations only



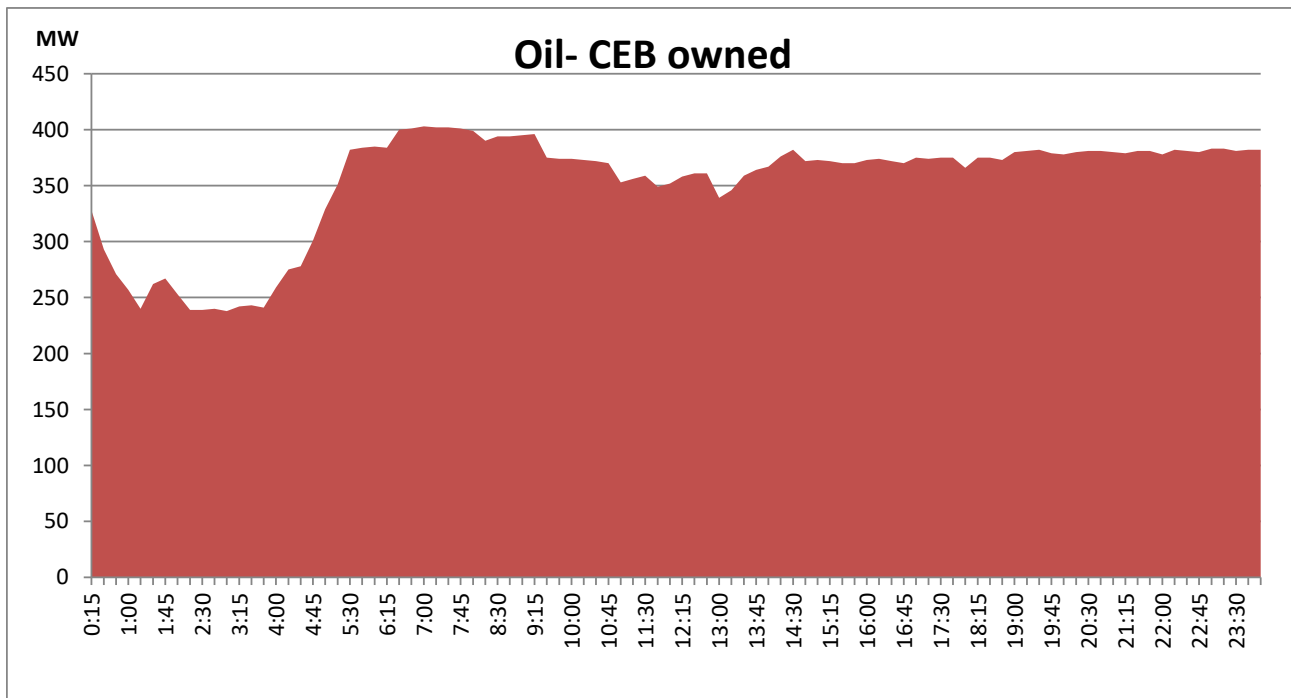
## Coal Generation during the Previous day

February 8, 2022



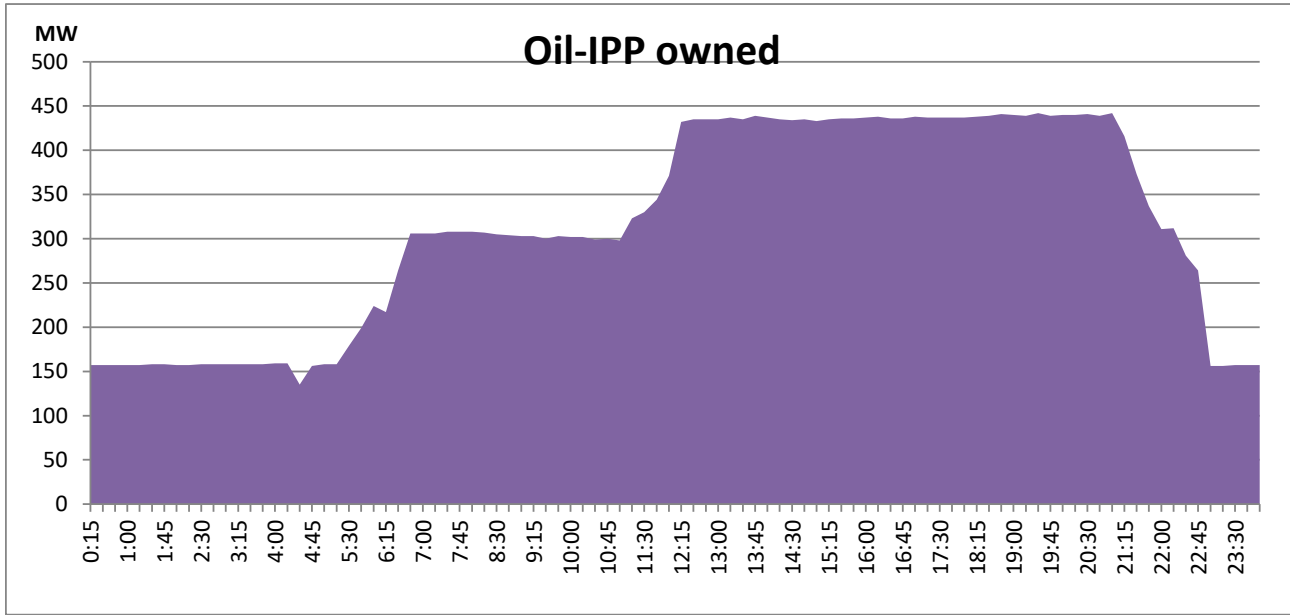
## CEB Oil Plant Generation during the Previous day

February 8, 2022



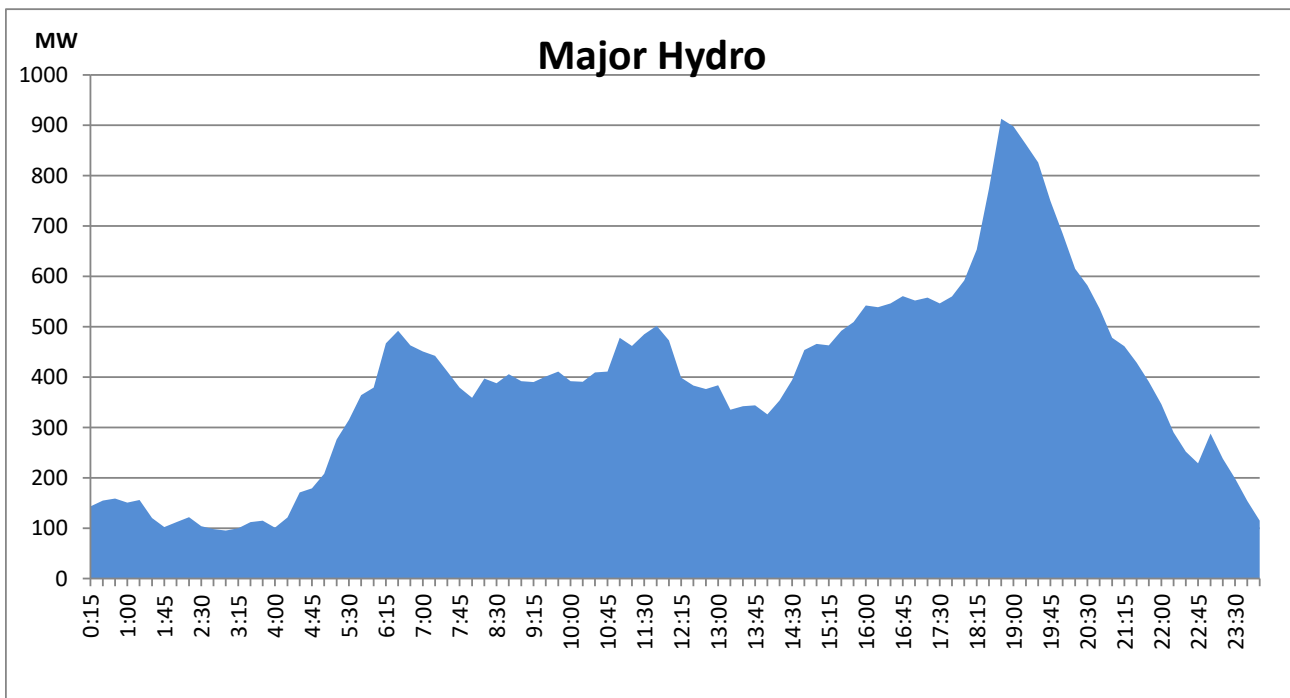
## IPP Oil Plant Generation during the Previous day

February 8, 2022



## Major Hydro Generation during the Previous day

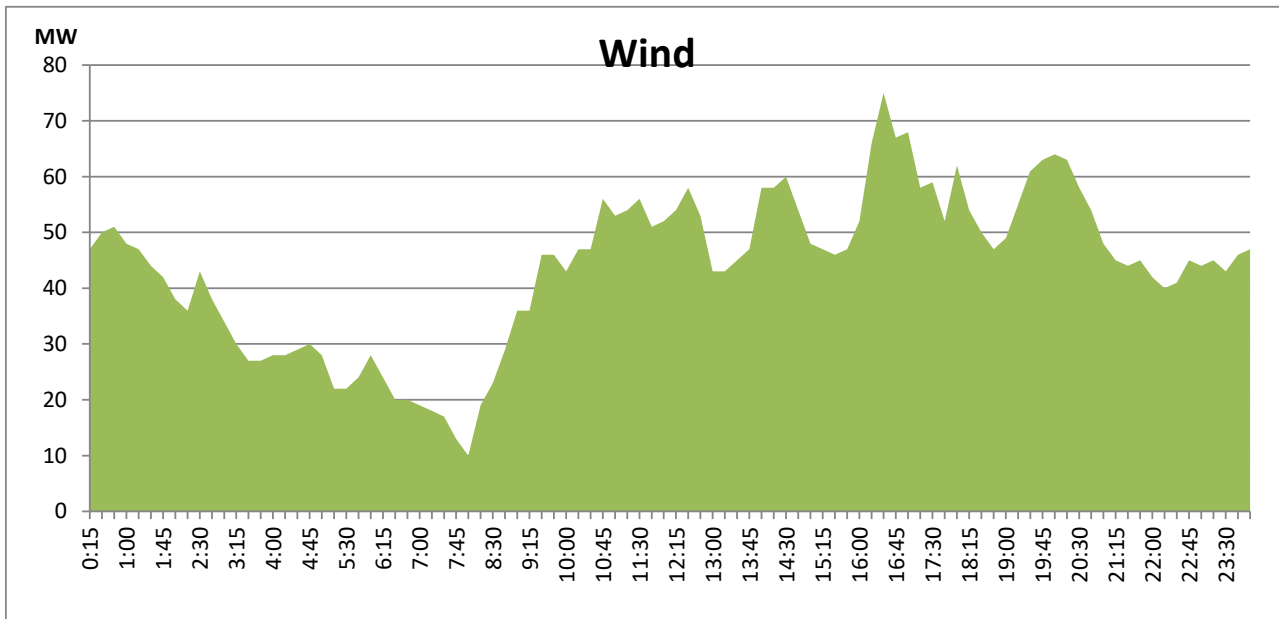
February 8, 2022



## Wind Generation during the Previous day

February 8, 2022

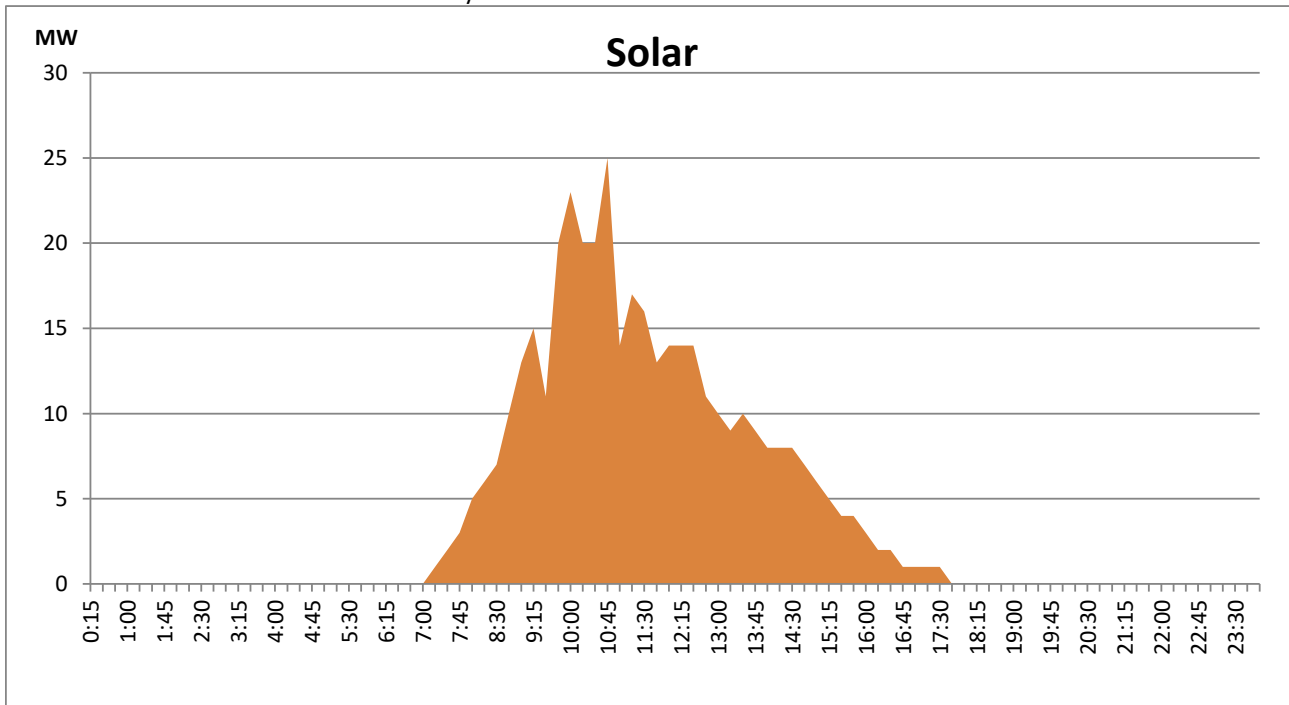
Based on Telemetered Power Stations only



## Solar Generation during the Previous day

February 8, 2022

Based on Telemetered Power Stations only



**Thermal Plant Fuel types**

<b>Power Station</b>	<b>Primary Fuel</b>
<b>CEB Thermal</b>	
<b>Sapugaskanda 1</b>	Heavy Fuel
<b>Sapugaskanda 2</b>	Heavy Fuel
<b>Kelanitissa Small Gas Turbines</b>	Auto Diesel
<b>GT 7 - Kelanitissa</b>	Auto Diesel
<b>Kelanitissa CCY</b>	Naptha & Diesel
<b>Lakvijaya 1</b>	Coal
<b>Lakvijaya 2</b>	Coal
<b>Lakvijaya 3</b>	Coal
<b>Uthuru Janani</b>	Heavy Fuel
<b>Barge CEB</b>	Furnace Oil

<b>Power Station</b>	<b>Primary Fuel</b>
<b>Private Thermal</b>	
<b>Sojitz - Kelanitissa</b>	Auto Diesel
<b>West Coast</b>	Low Sulphur Furnace oil

**Major Incidents during the day -as reported by CEB morning of**  
1) Nil.

**February 10, 2022**