

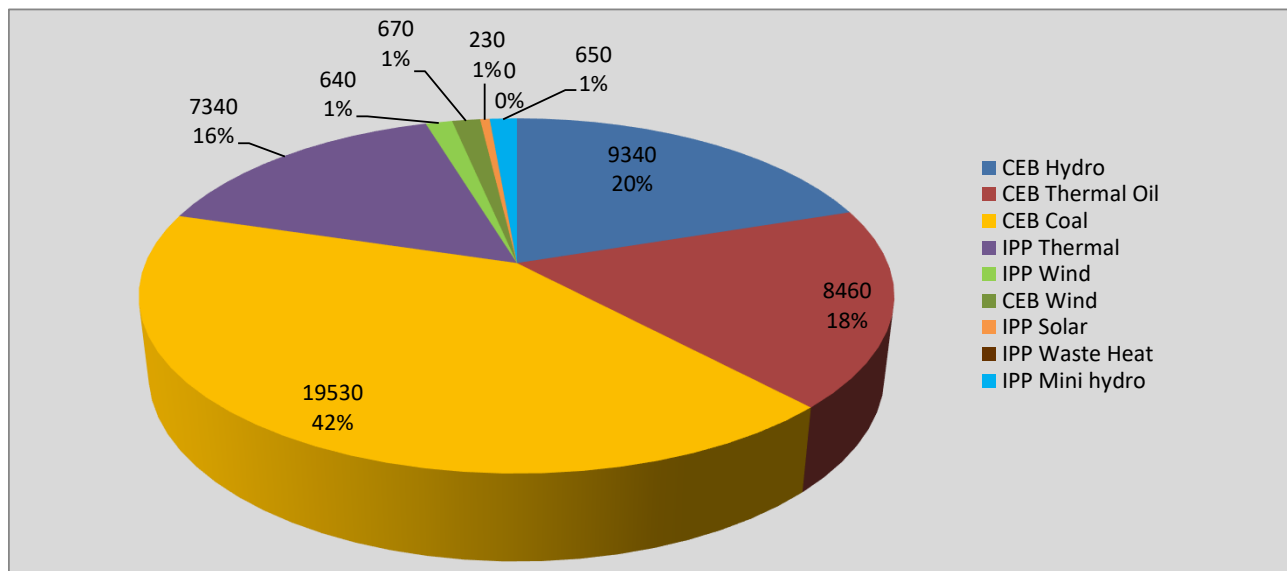
Generation and Reservoirs Statistics

February 8, 2022



PUBLIC UTILITIES COMMISSION OF SRI LANKA

Daily Generation Mix in MWh



Total Generation **46,860 MWh**

Note: Above data is excluding contribution from Roof Top Solar, 1MW Solar and certain Mini Hydro plants

Cumulative Dispatch

Note: Following data is Excluding contribution from Roof Top Solar, 1MW solar and Mini Hydro plants

For Current Month

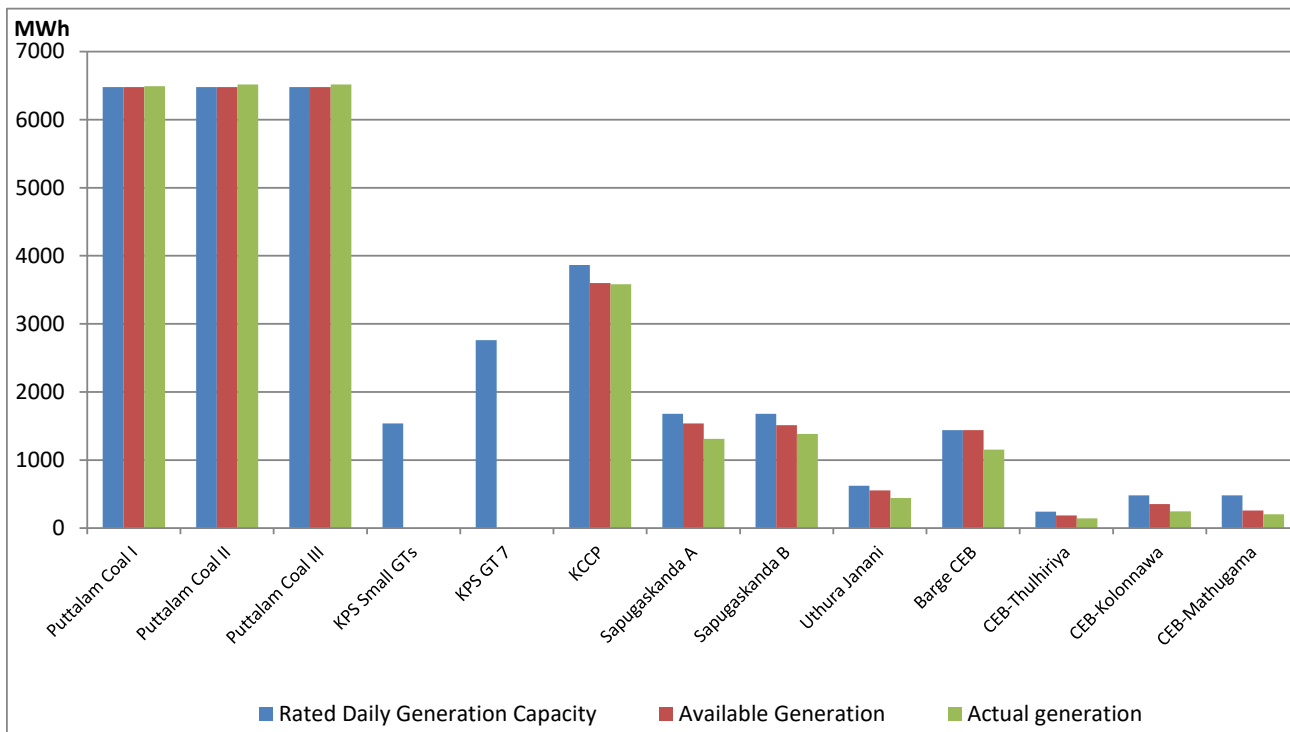
Category	Dispatch (GWh)	Percentage
CEB Hydro	85.9	24.73%
CEB Thermal Oil	46.9	13.51%
CEB Coal	146.8	42.26%
IPP Thermal	52.0	14.98%
SPP Wind	3.1	0.89%
CEB Wind	3.8	1.08%
SPP Solar	2.3	0.65%
SPP Solid Waste	1.3	0.37%
Mini Hydro	5.4	1.55%
Total	347.4	

For Current Year

Category	Dispatch (GWh)	Percentage
CEB Hydro	493.2	29.23%
CEB Thermal Oil	291.1	17.25%
CEB Coal	554.0	32.83%
IPP Thermal	256.1	15.18%
SPP Wind	18.4	1.09%
CEB Wind	21.9	1.29%
SPP Solar	10.2	0.60%
SPP Solid Waste	9.4	0.56%
Mini Hydro	33.6	1.99%
Total	1,687.5	

CEB owned Thermal Plant Dispatch

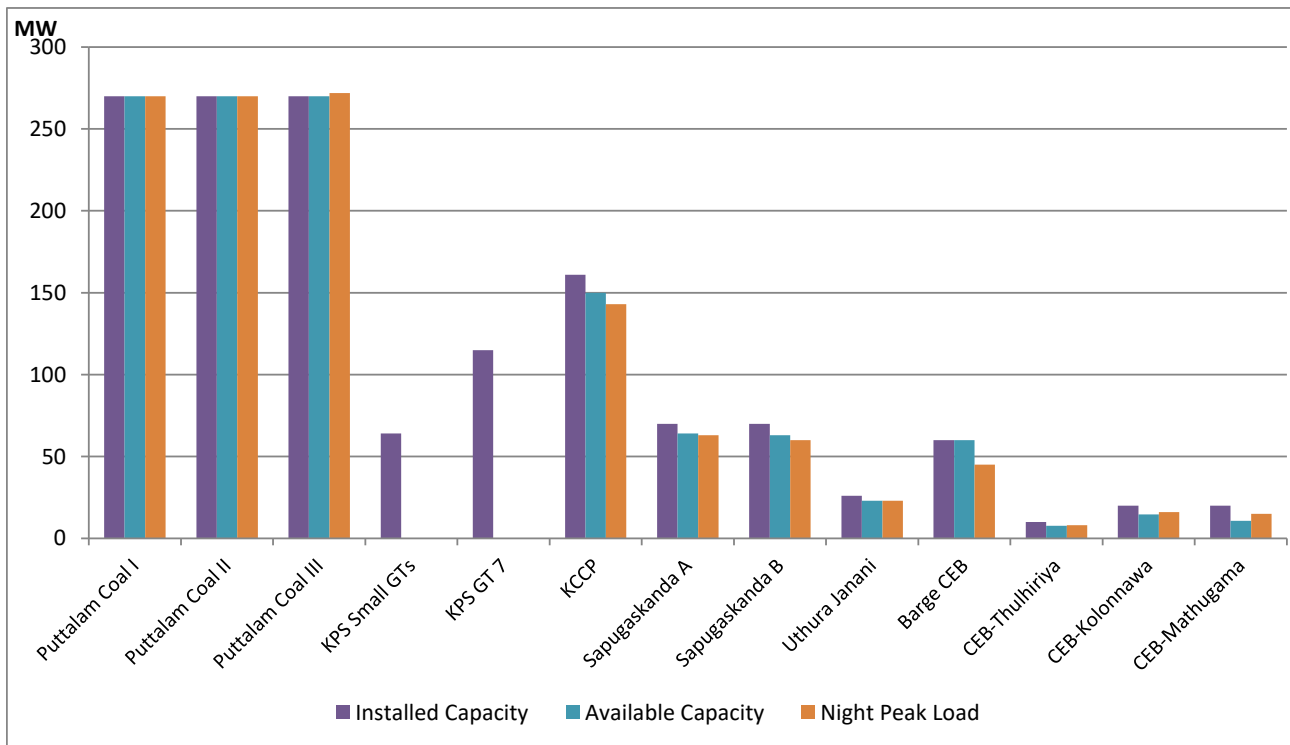
February 8, 2022



Available Generation is estimated based on plant availability at 6.00am on

February 9, 2022

CEB owned Thermal Plant Loading at the Night Peak



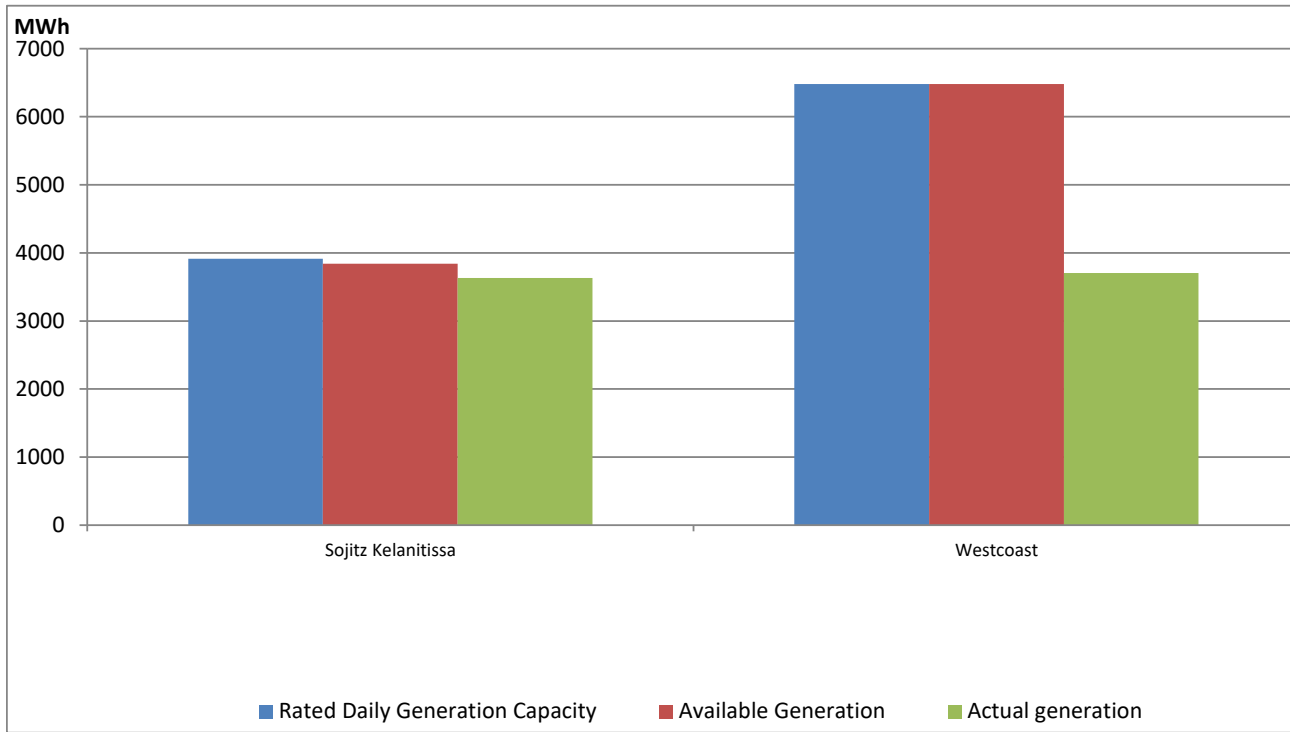
Note- Plant availability is recorded at 6.00 am on

February 9, 2022

IPP owned Thermal Plant Dispatch

February 8, 2022

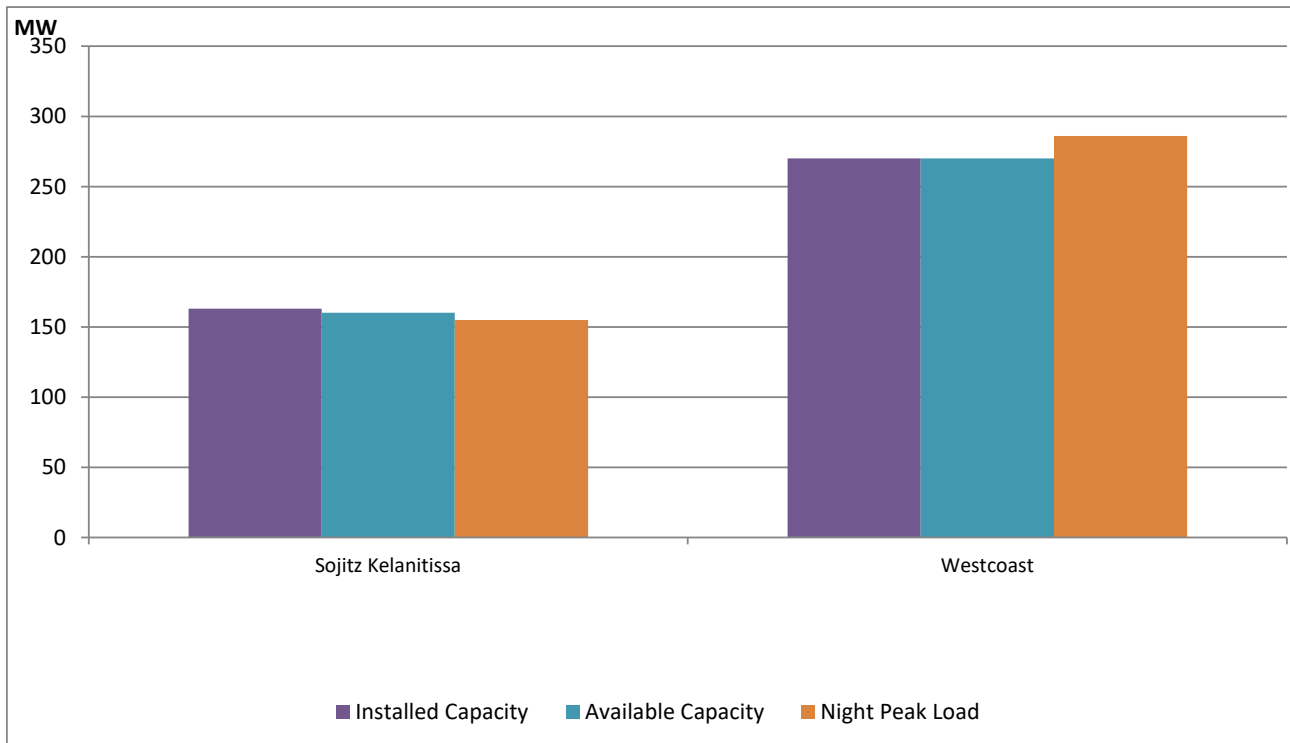
ACE Embilipitiya, ACE Matara, Asia Power, V Power Pallekale, Vpower Galle, V Power Horana, Vpower Hambantota, Vpower Valachchena and Altaqa Mahiyanganaya are not available due to expiration of PPAs



Available Generation is estimated based on plant availability at 6.00am on

February 9, 2022

IPP owned Thermal Plant Loading at the Night Peak

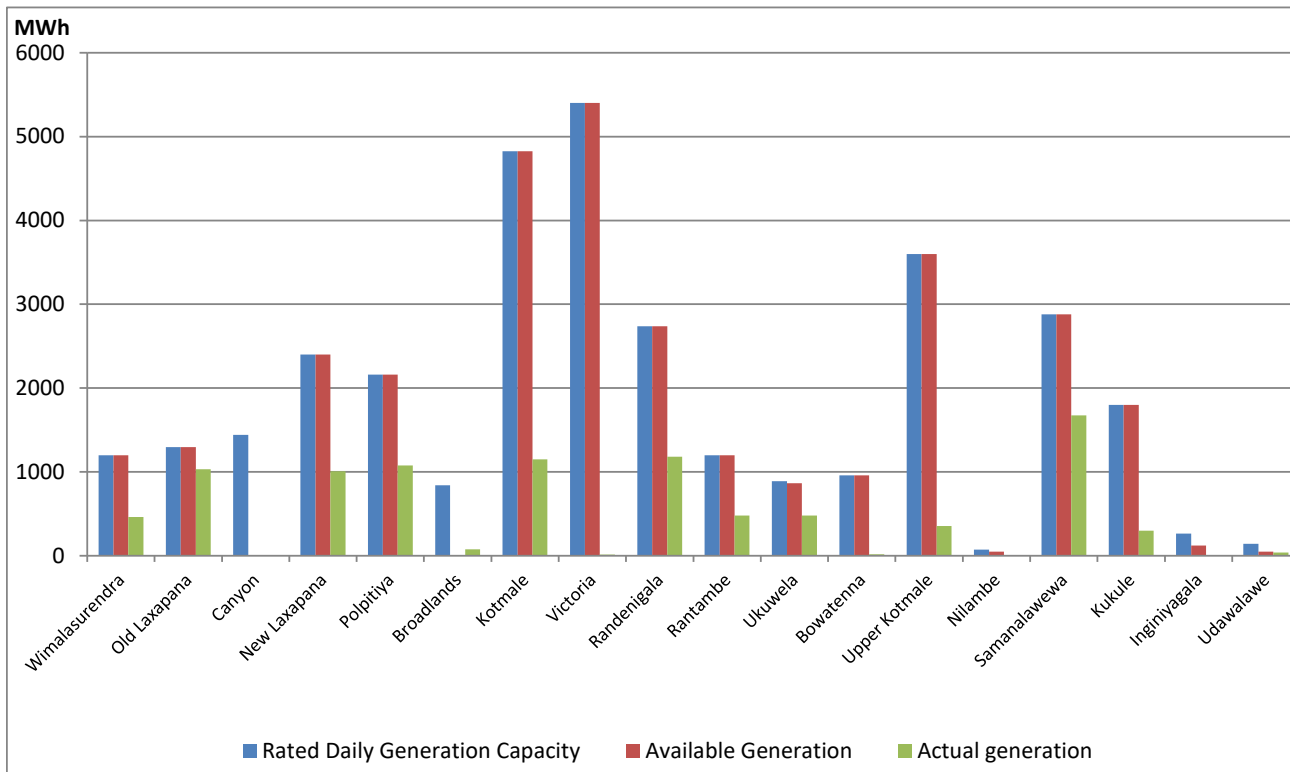


Note- Plant availability is recorded at 6.00 am on

February 9, 2022

Major Hydro Plant Dispatch

February 8, 2022

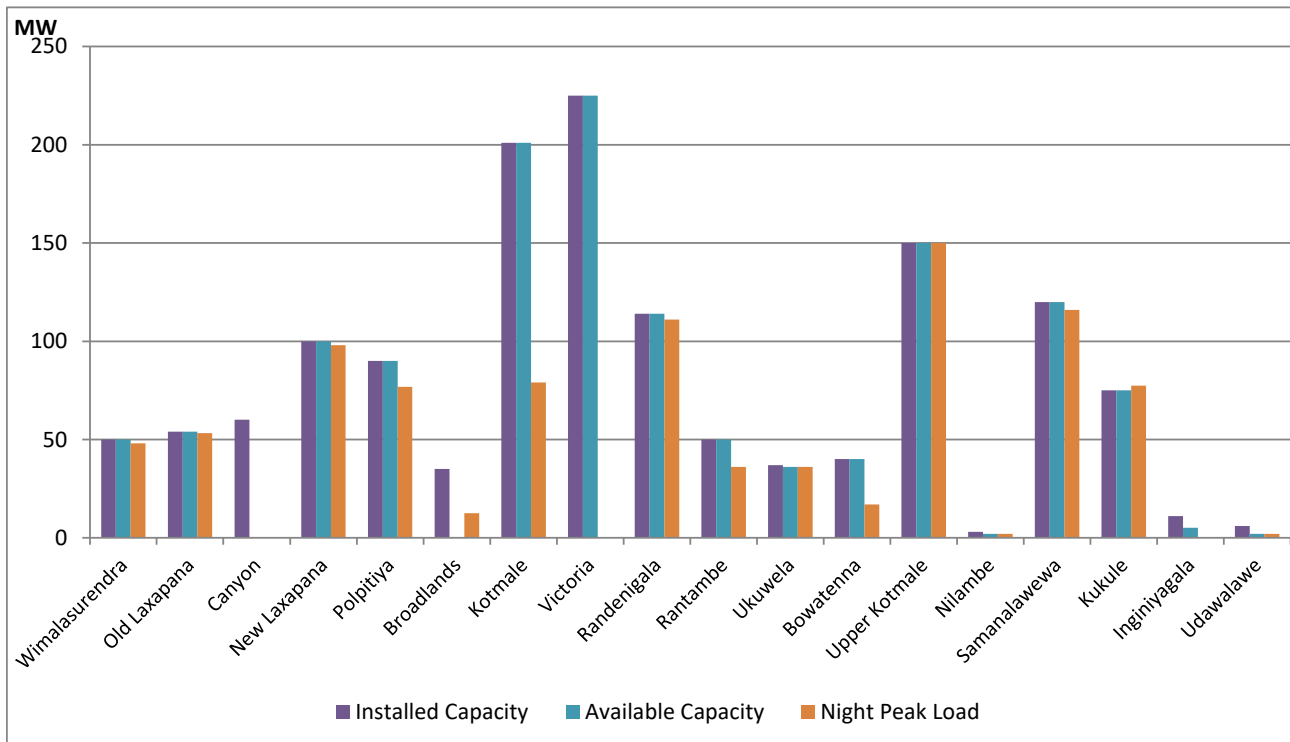


Available Generation is estimated based on plant availability at 6.00am on
Broadlands power plant is operating in the Commissioning Stage

February 9, 2022

Major Hydro Plant Loading at Night Peak

February 8, 2022



Note- Plant availability is recorded at 6.00 am on
Broadlands power plant is operating in the Commissioning Stage

February 9, 2022

Summary of Major Plant performance

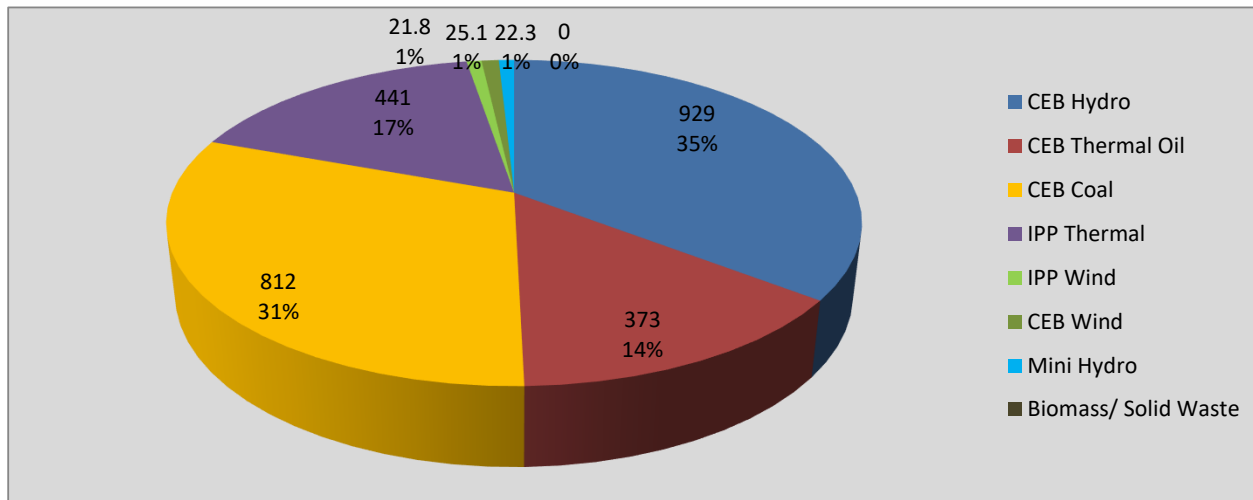
Plant	Installed Capacity (MW)	Plant Availability (MW)	Night peak Load (MW)	Plant Dispatch (MWh)
Wimalasurendra	50	50	48	463
Old Laxapana	54	54	53	1,031
Canyon	60	0	0	0
New Laxapana	100	100	98	1,006
Polpitiya	90	90	77	1,077
Broadlands	35	0	13	77
Kotmale	201	201	79	1,150
Victoria	225	225	0	14
Randenigala	114	114	111	1,180
Rantambe	50	50	36	478
Ukuwela	37	36	36	481
Bowatenna	40	40	17	19
Upper Kotmale	150	150	150	356
Nilambe	3	2	2	5
Samanalawewa	120	120	116	1,675
Kukule	75	75	77	299
Inginiyagala	11	5	0	0
Udawalawe	6	2	2	40
Puttalam Coal I	270	270	270	6,493
Puttalam Coal II	270	270	270	6,517
Puttalam Coal III	270	270	272	6,516
KPS Small GTs	64	0	0	0
KPS GT 7	115	0	0	0
KCCP	161	150	143	3,582
Sapugaskanda A	70	64	63	1,309
Sapugaskanda B	70	63	60	1,383
Uthura Janani	26	23	23	441
Barge CEB	60	60	45	1,154
CEB-Thulhiriya	10	8	8	141
CEB-Kolonnawa	20	15	16	247
CEB-Mathugama	20	11	15	204
Sojitz Kelanitissa	163	160	155	3,633
West Coast	270	270	286	3,703
Total	3,280	2,947	2,610	46,853

Plant availability is the availability recorded at 6 am on

February 9, 2022

Contribution to the Night Peak in MW

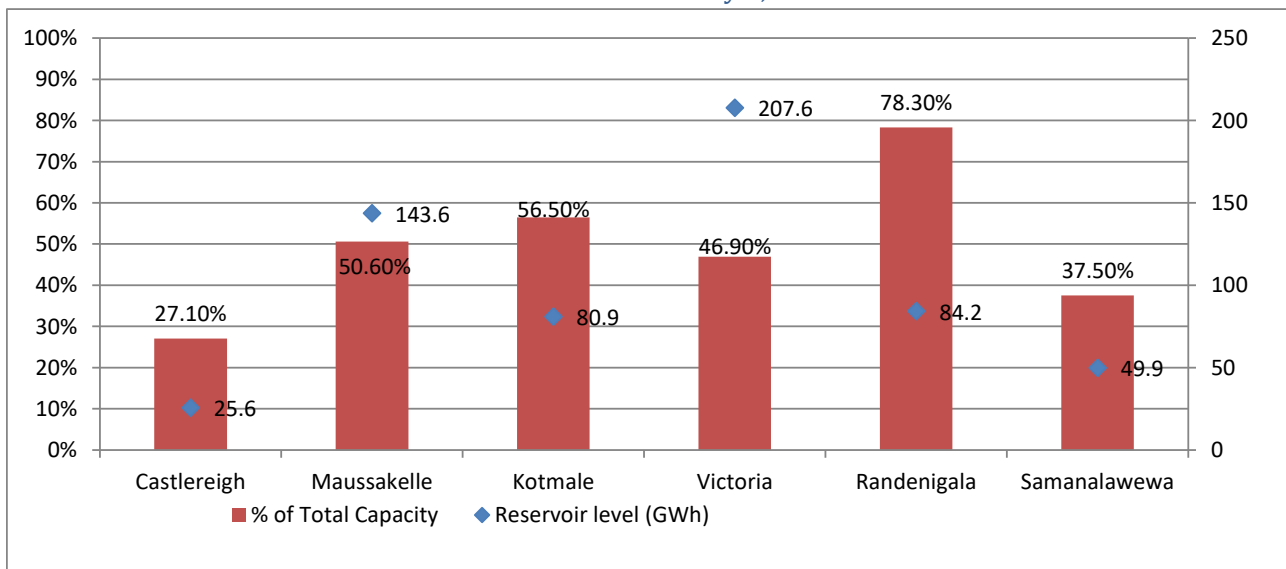
February 8, 2022



Night Peak*	2,624.1 MW
Day Peak	2,250.3 MW
Minimum Demand	1,369.1 MW

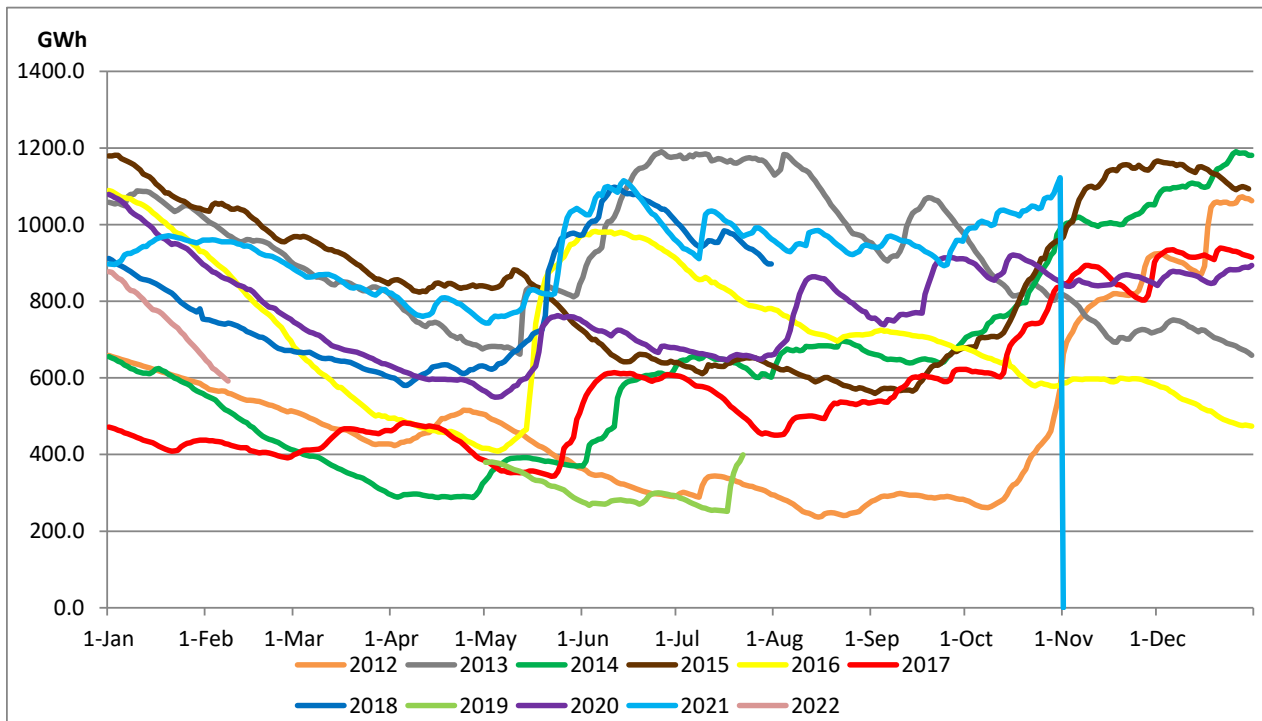
Above figures are excluding contribution from Roof Top Solar, 1MW solar, certain Wind plants and Mini Hydro plants

Reservoir Levels - as at 06.00 Hr on February 9, 2022



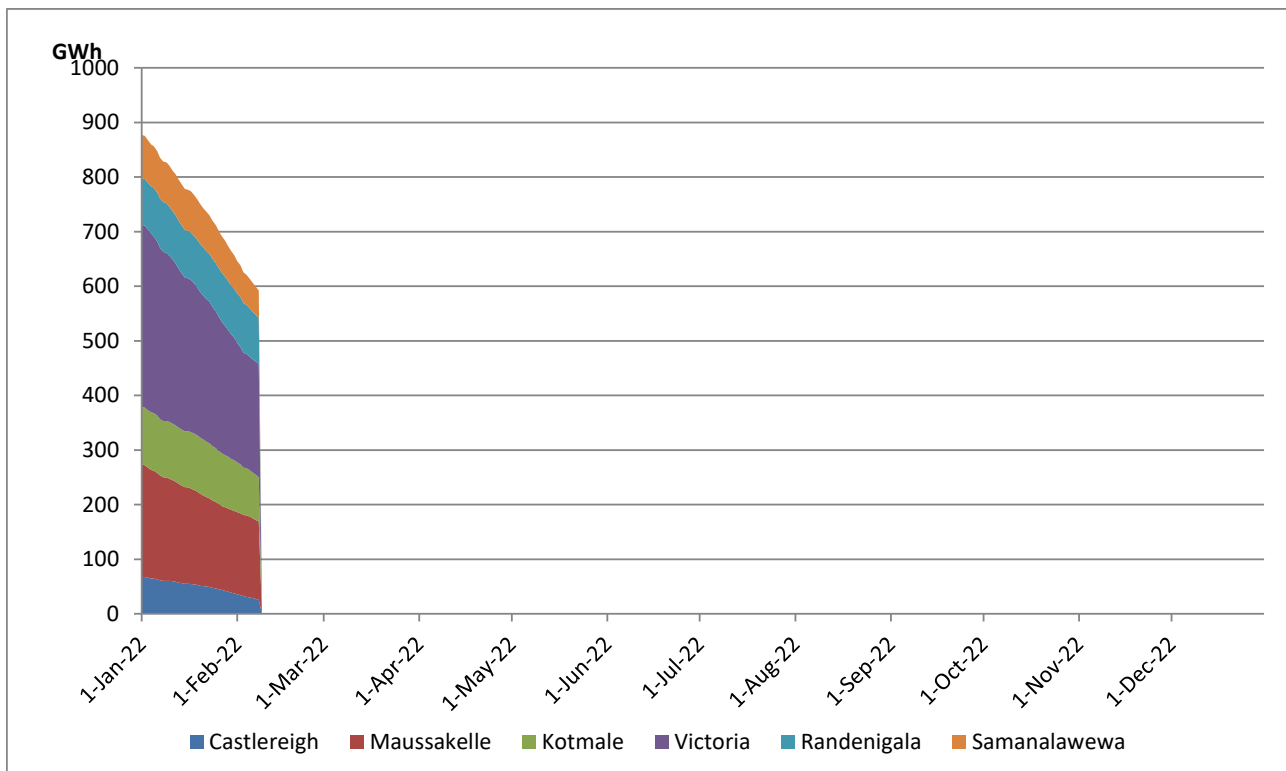
Total Reservoir Level(GWh)	591.8
% of Total capacity	49.5%

Comparison of Total Reservoir Storage Levels with Past Years

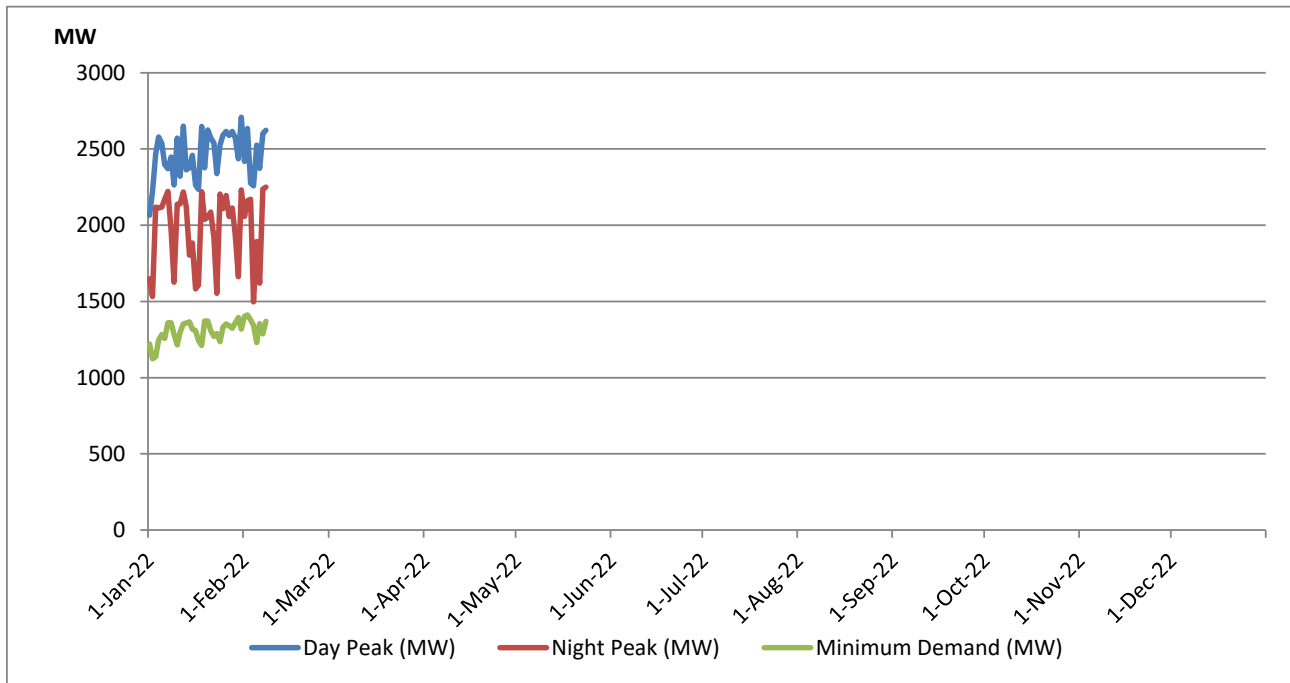


Data for 2018 and 2019 are only available for part of year.

Variation of Major Hydro Reservoir Levels in the current year (GWh)



Variation of Demand during the current year

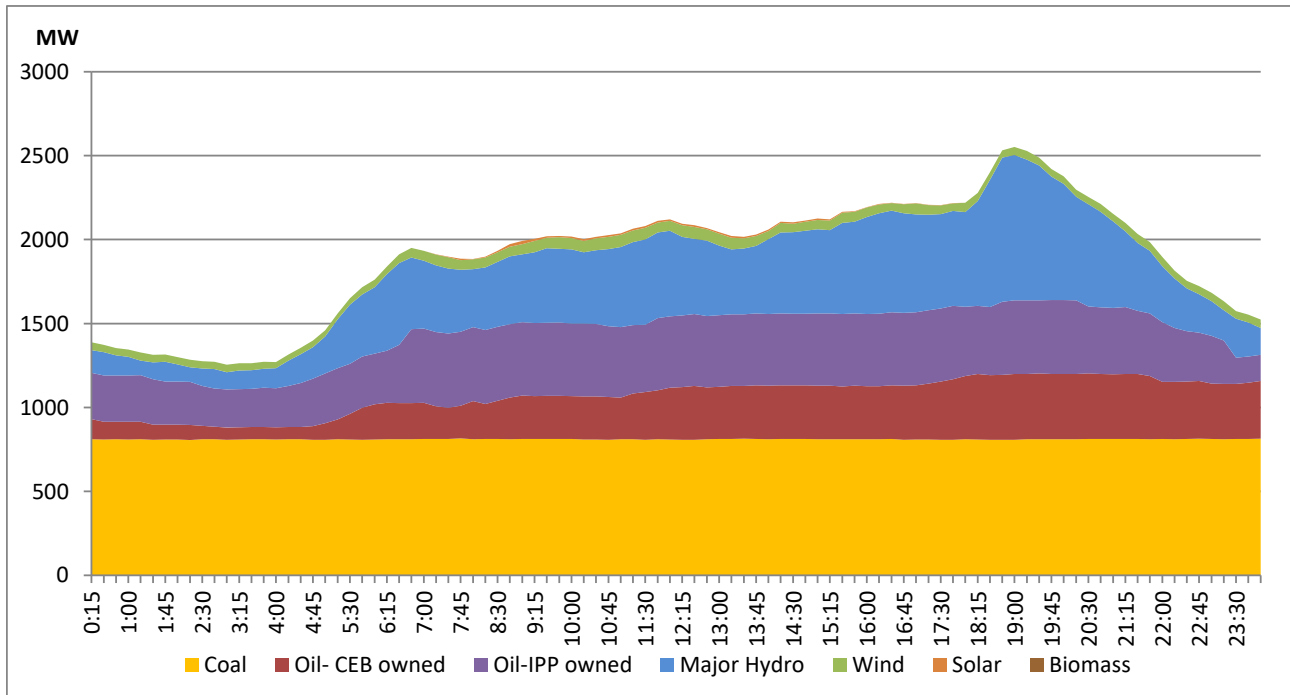


The above figures are excluding contribution from Roof Top Solar, 1MW solar, certain Wind plants and Mini Hydro plants

Daily Load Curve of the Previous day

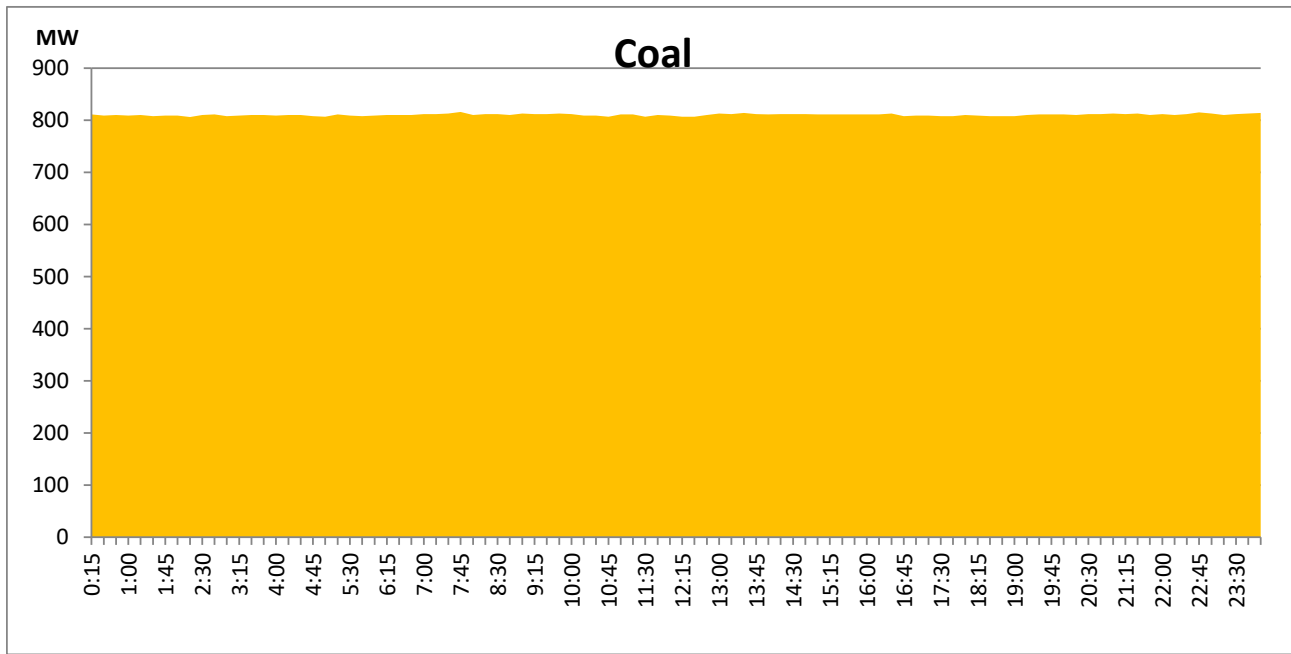
February 7, 2022

Solar and wind data is based on Telemetered Power Stations only



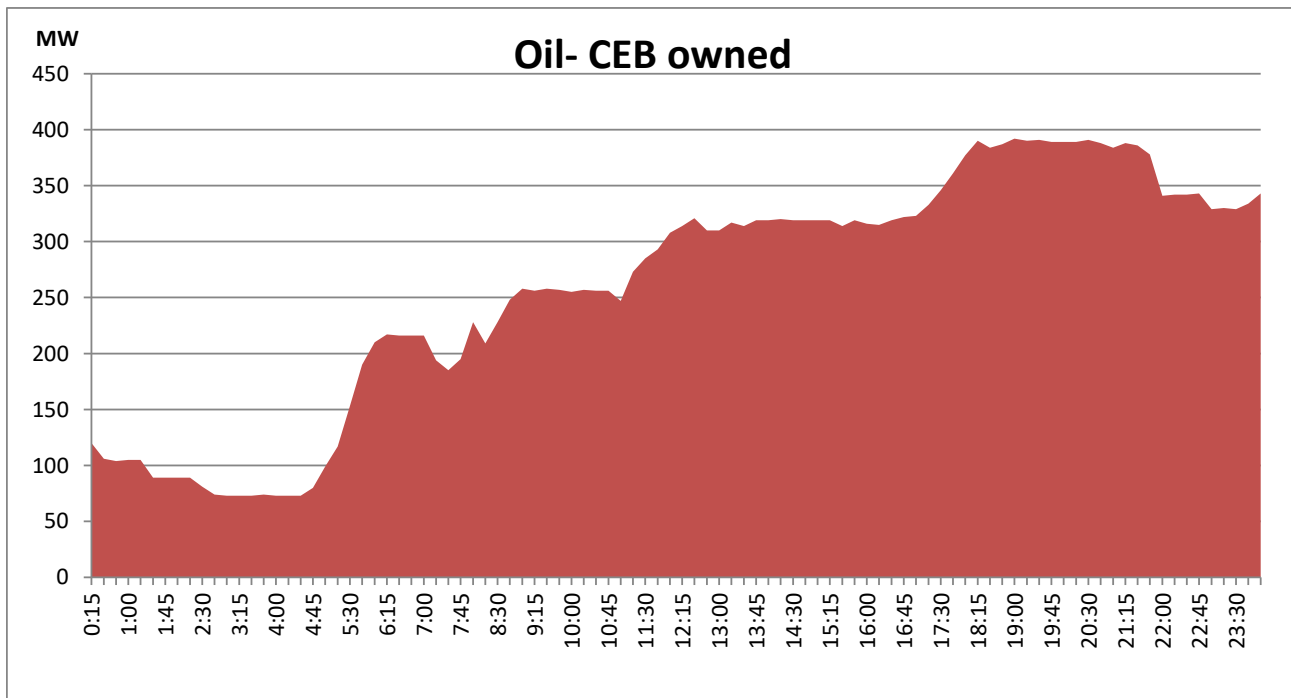
Coal Generation during the Previous day

February 7, 2022



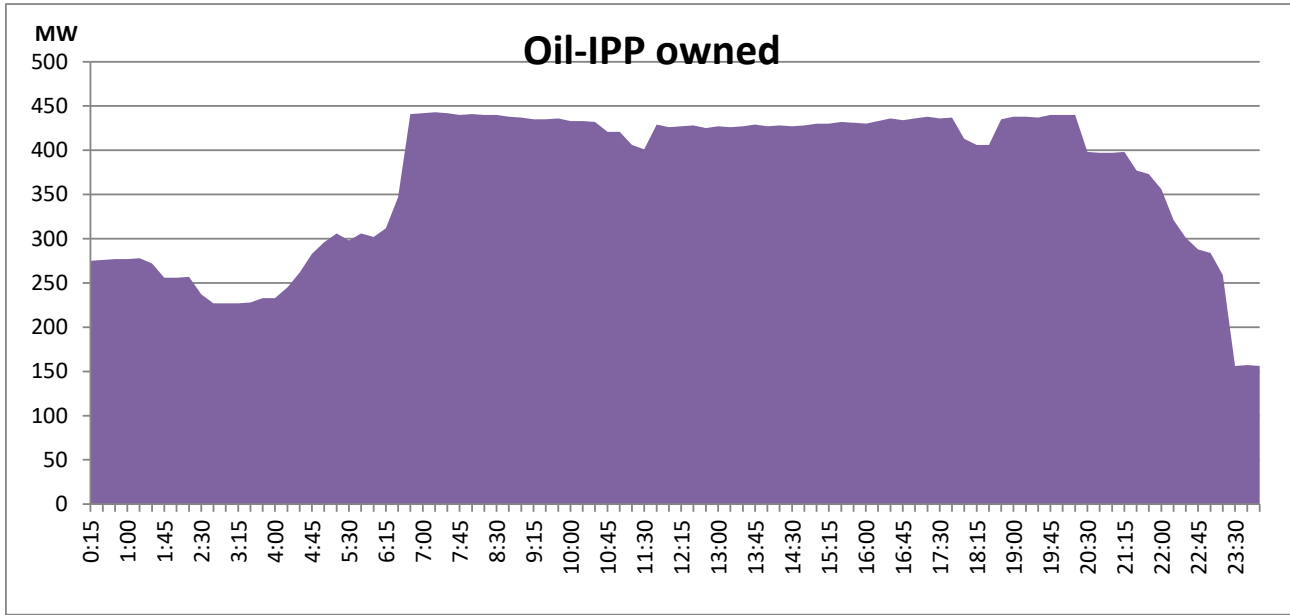
CEB Oil Plant Generation during the Previous day

February 7, 2022



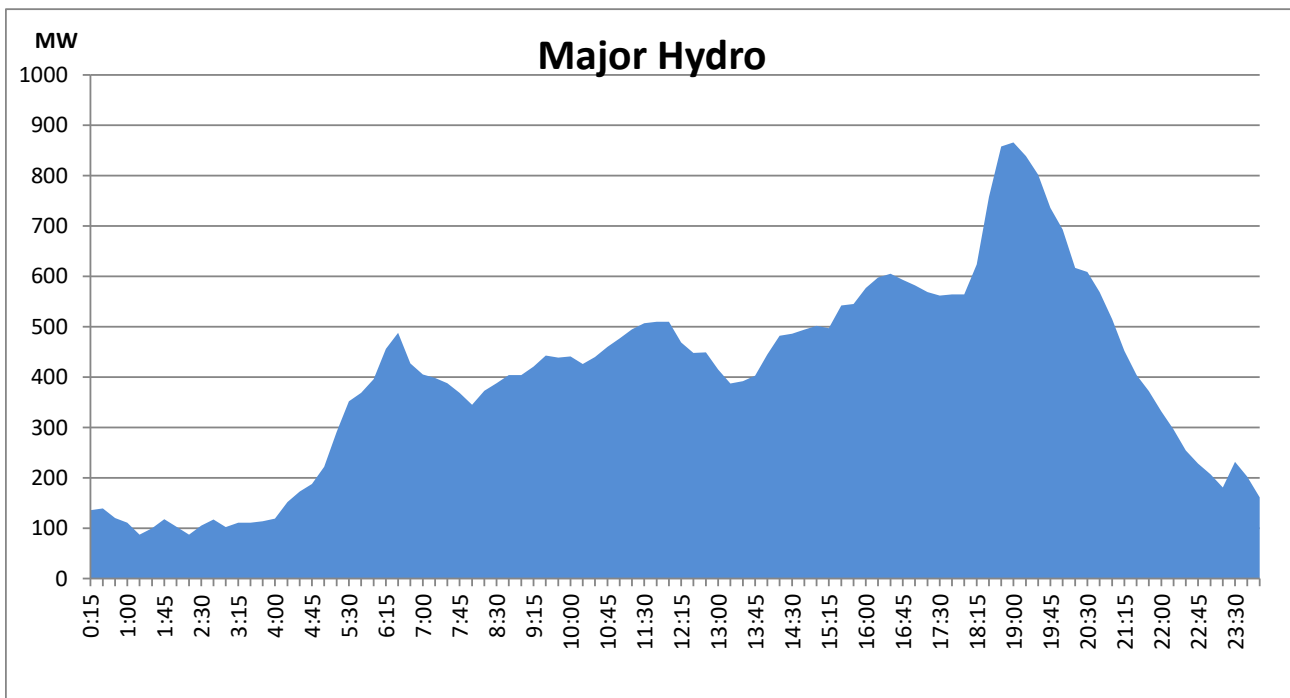
IPP Oil Plant Generation during the Previous day

February 7, 2022



Major Hydro Generation during the Previous day

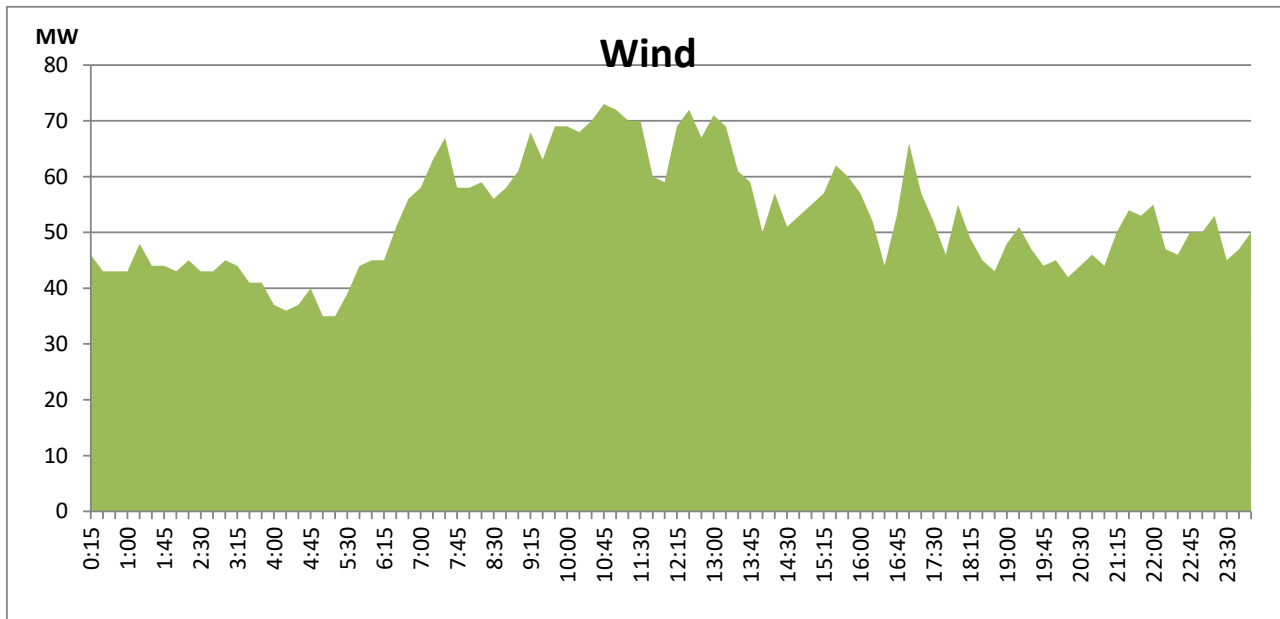
February 7, 2022



Wind Generation during the Previous day

February 7, 2022

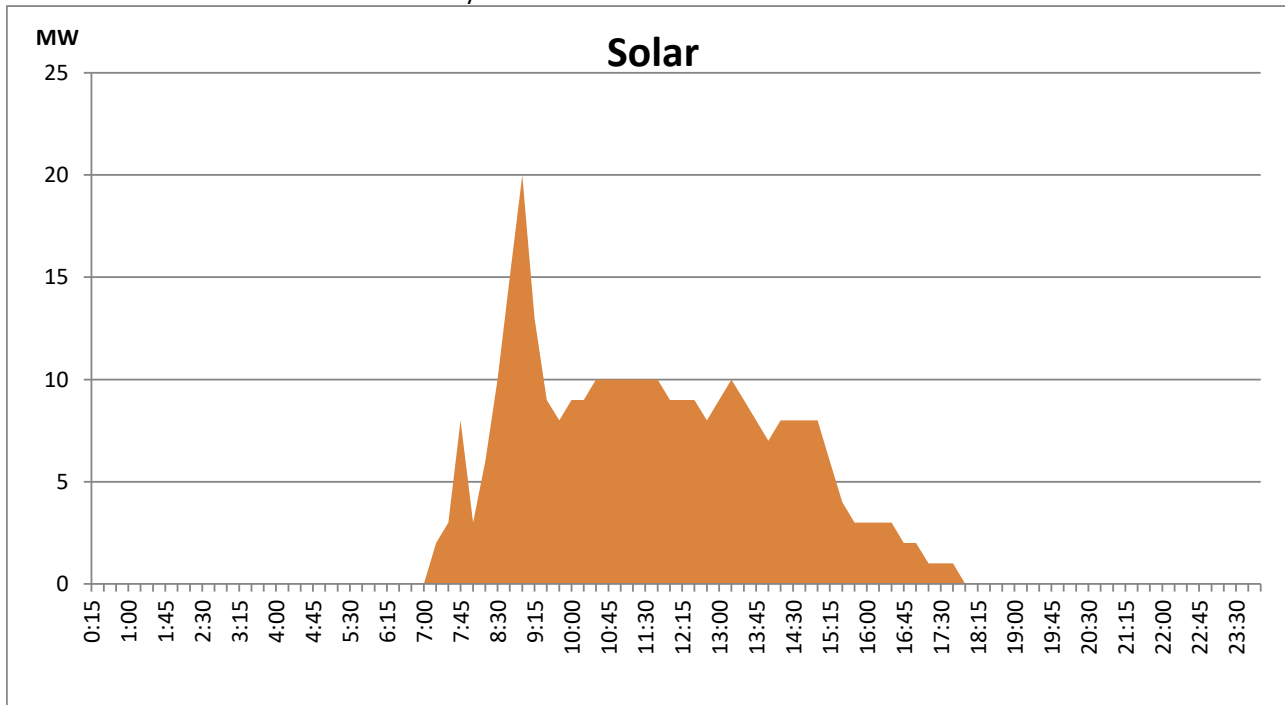
Based on Telemetered Power Stations only



Solar Generation during the Previous day

February 7, 2022

Based on Telemetered Power Stations only



Thermal Plant Fuel types

Power Station	Primary Fuel
CEB Thermal	
Sapugaskanda 1	Heavy Fuel
Sapugaskanda 2	Heavy Fuel
Kelanitissa Small Gas Turbines	Auto Diesel
GT 7 - Kelanitissa	Auto Diesel
Kelanitissa CCY	Naptha & Diesel
Lakvijaya 1	Coal
Lakvijaya 2	Coal
Lakvijaya 3	Coal
Uthuru Janani	Heavy Fuel
Barge CEB	Furnace Oil

Power Station	Primary Fuel
Private Thermal	
Sojitz - Kelanitissa	Auto Diesel
West Coast	Low Sulphur Furnace oil

Major Incidents during the day -as reported by CEB morning of

1200
1000
800
600
400
200

February 9, 2022