

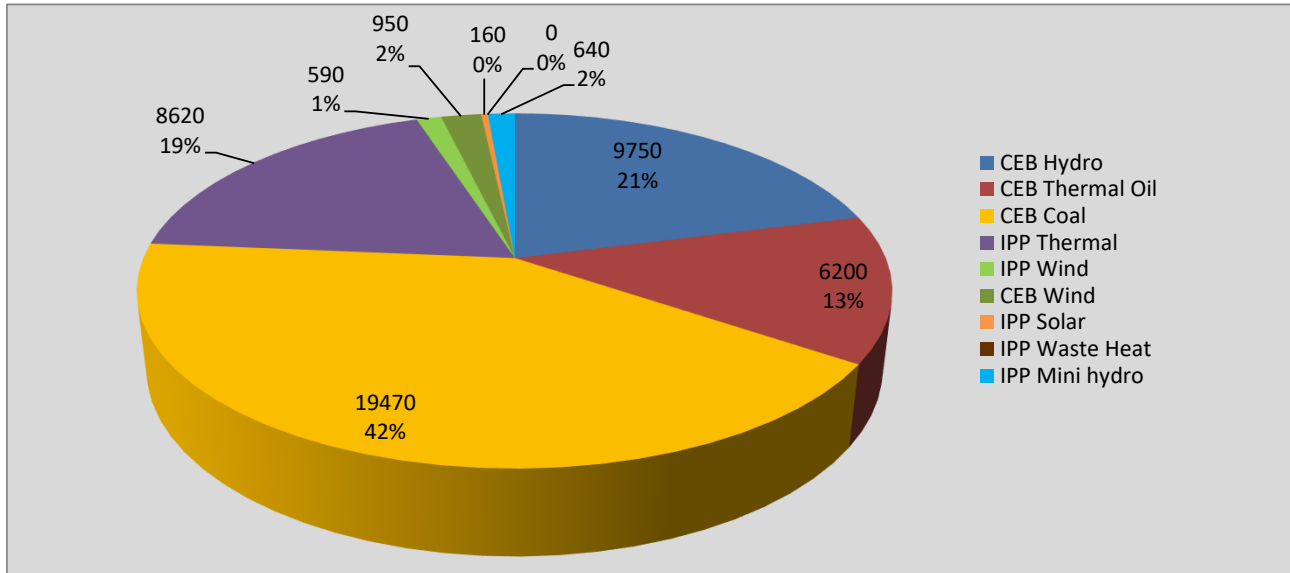
Generation and Reservoirs Statistics

February 7, 2022



PUBLIC UTILITIES COMMISSION OF SRI LANKA

Daily Generation Mix in MWh



Total Generation **46,380 MWh**

Note: Above data is excluding contribution from Roof Top Solar, 1MW Solar and certain Mini Hydro plants

Cumulative Dispatch

Note: Following data is Excluding contribution from Roof Top Solar, 1MW solar and Mini Hydro plants

For Current Month

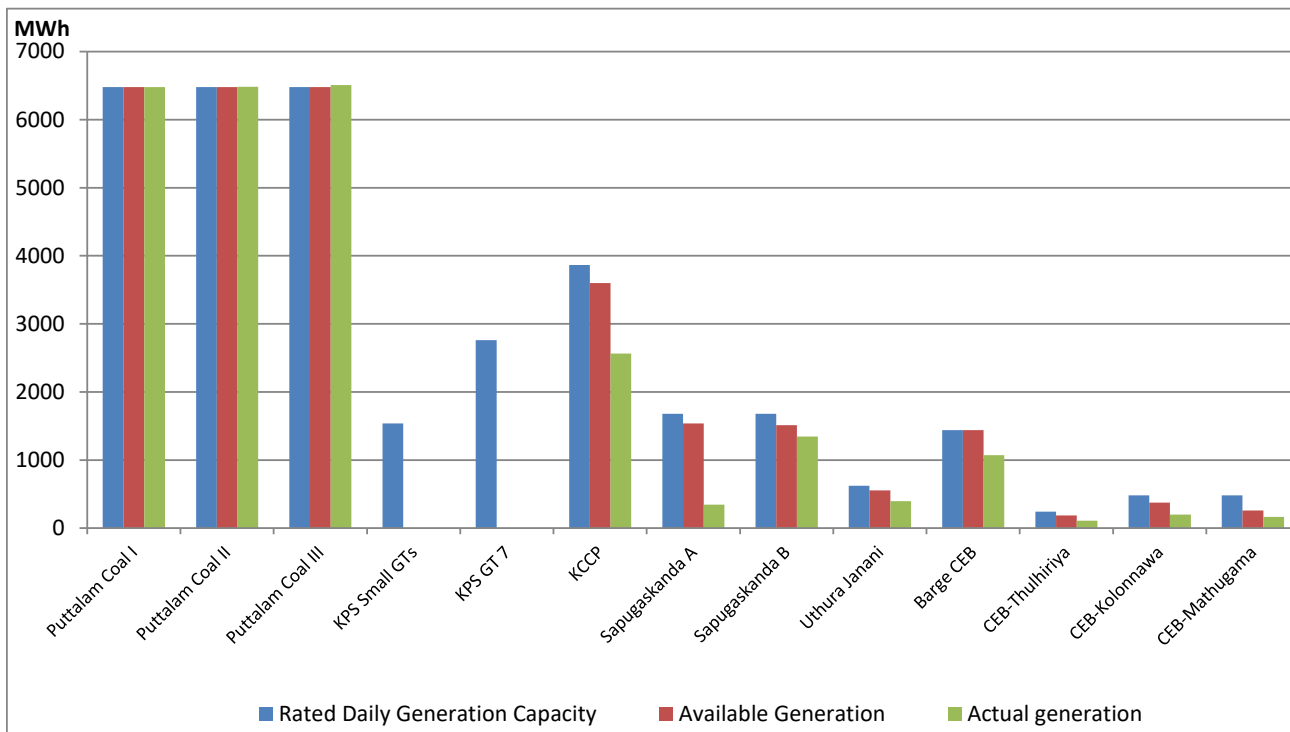
Category	Dispatch (GWh)	Percentage
CEB Hydro	76.6	25.48%
CEB Thermal Oil	38.5	12.80%
CEB Coal	127.3	42.35%
IPP Thermal	44.7	14.87%
SPP Wind	2.4	0.81%
CEB Wind	3.1	1.02%
SPP Solar	2.0	0.67%
SPP Solid Waste	1.3	0.42%
Mini Hydro	4.7	1.57%
Total	300.5	

For Current Year

Category	Dispatch (GWh)	Percentage
CEB Hydro	483.9	29.49%
CEB Thermal Oil	282.6	17.22%
CEB Coal	534.5	32.58%
IPP Thermal	248.8	15.16%
SPP Wind	17.8	1.08%
CEB Wind	21.2	1.29%
SPP Solar	10.0	0.61%
SPP Solid Waste	9.4	0.57%
Mini Hydro	32.9	2.01%
Total	1,640.7	

CEB owned Thermal Plant Dispatch

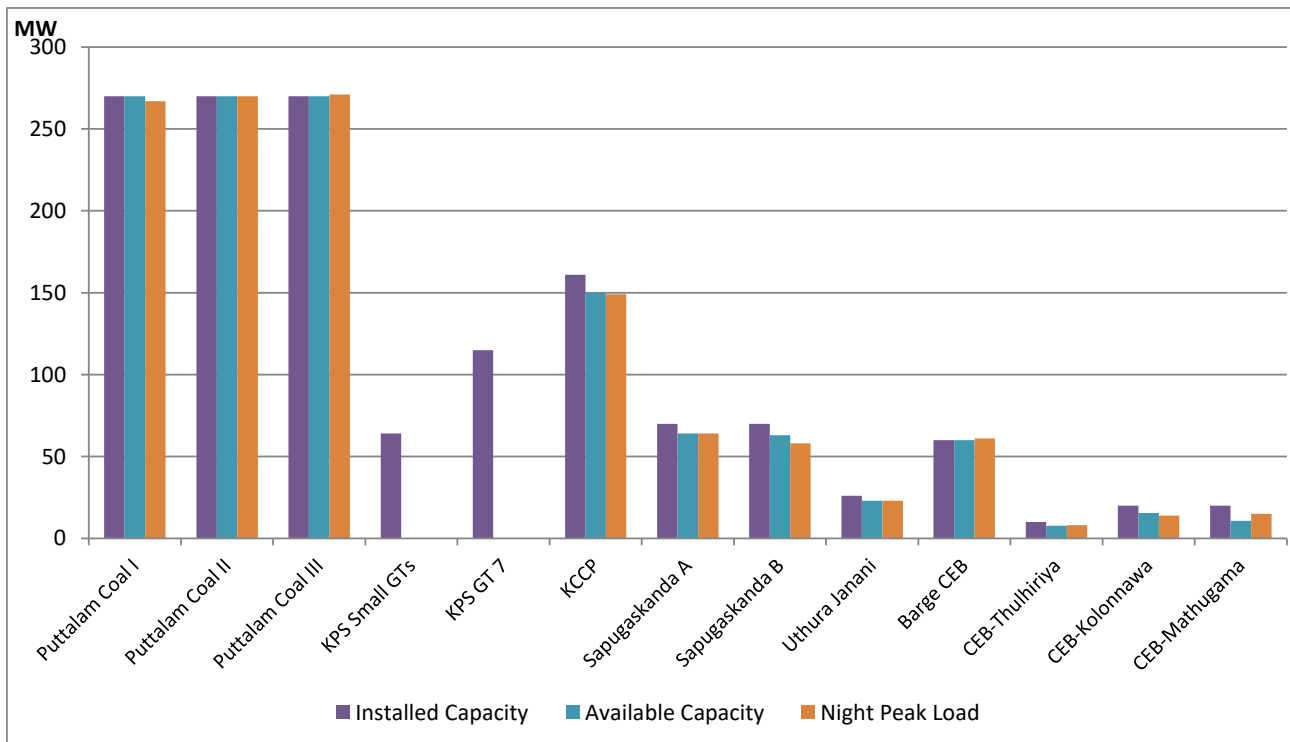
February 7, 2022



Available Generation is estimated based on plant availability at 6.00am on

February 8, 2022

CEB owned Thermal Plant Loading at the Night Peak



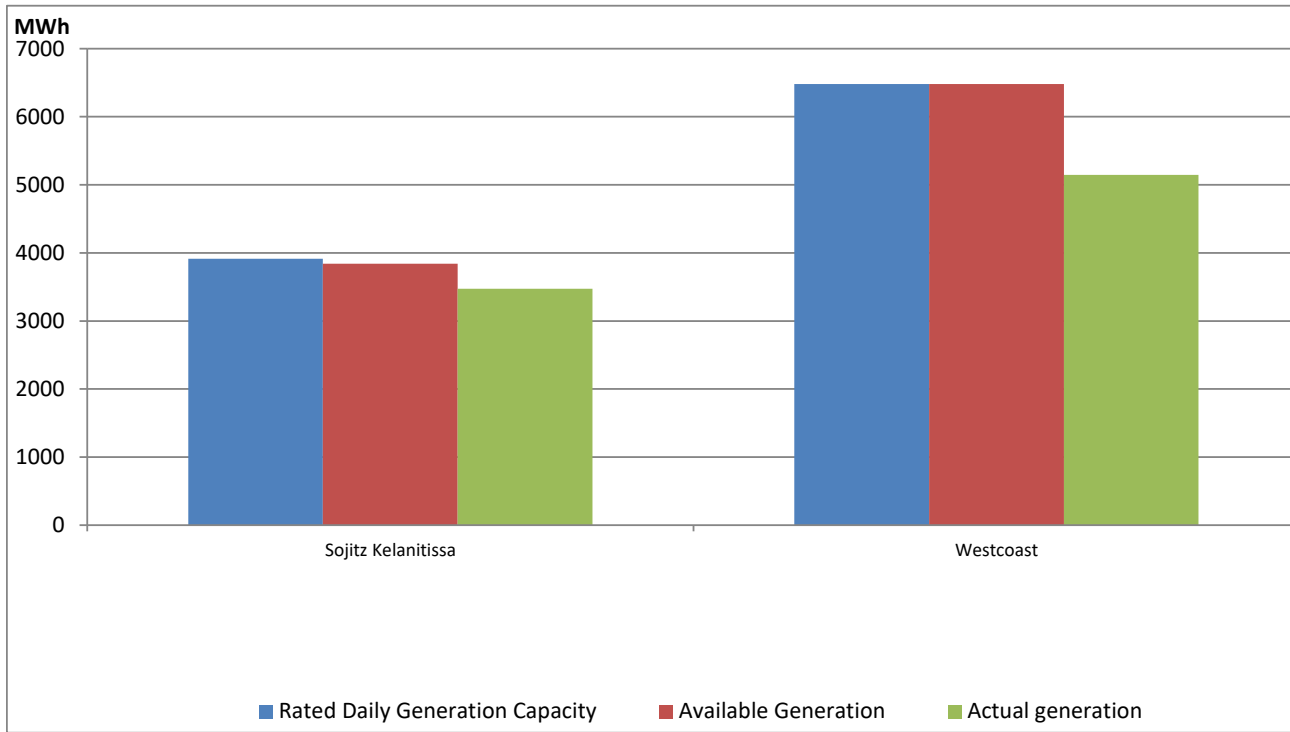
Note- Plant availability is recorded at 6.00 am on

February 8, 2022

IPP owned Thermal Plant Dispatch

February 7, 2022

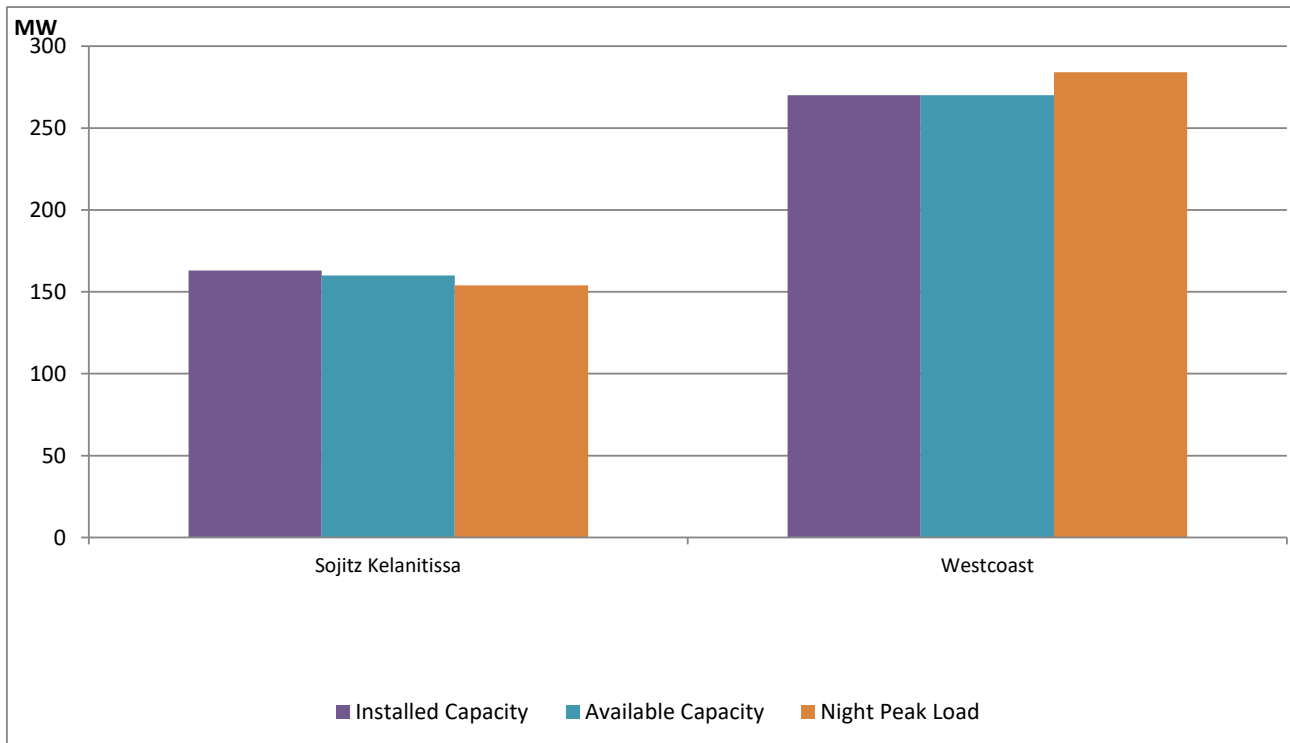
ACE Embilipitiya, ACE Matara, Asia Power, V Power Pallekale, Vpower Galle, V Power Horana, Vpower Hambantota, Vpower Valachchena and Altaqa Mahiyanganaya are not available due to expiration of PPAs



Available Generation is estimated based on plant availability at 6.00am on

February 8, 2022

IPP owned Thermal Plant Loading at the Night Peak

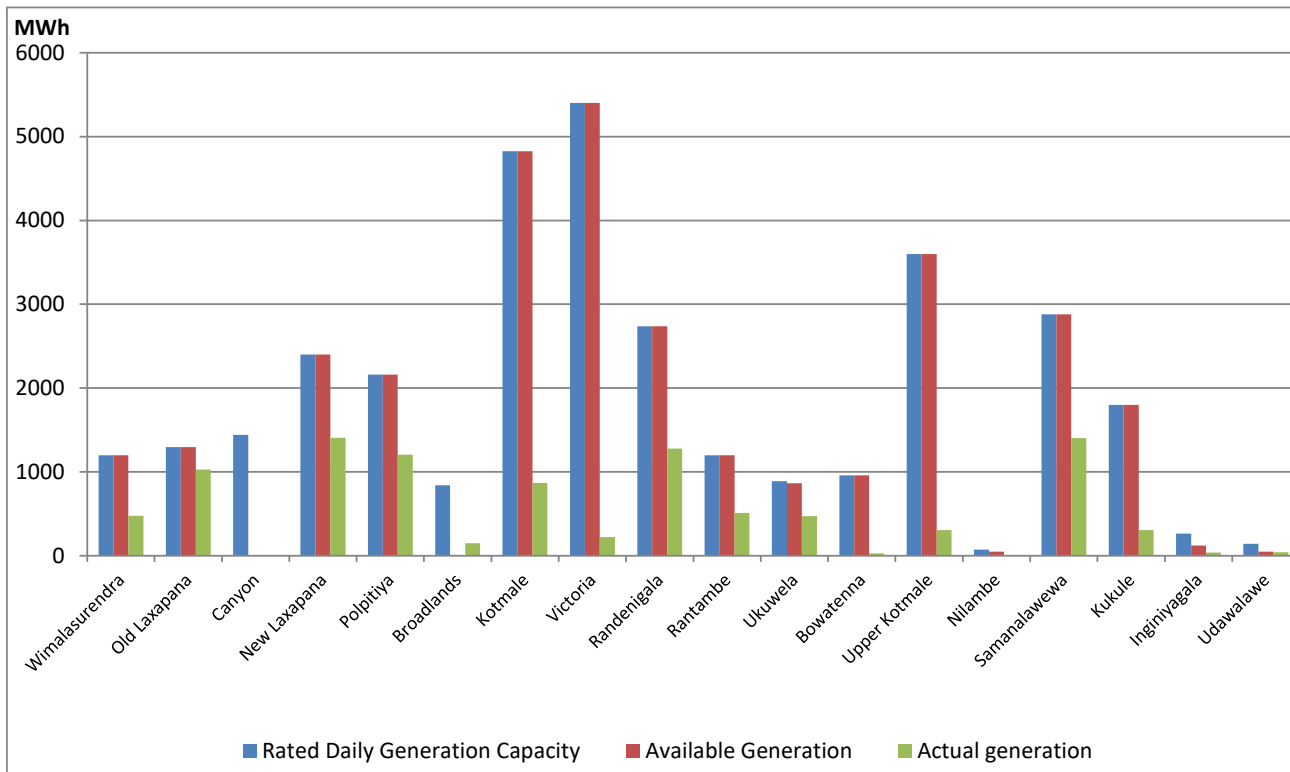


Note- Plant availability is recorded at 6.00 am on

February 8, 2022

Major Hydro Plant Dispatch

February 7, 2022

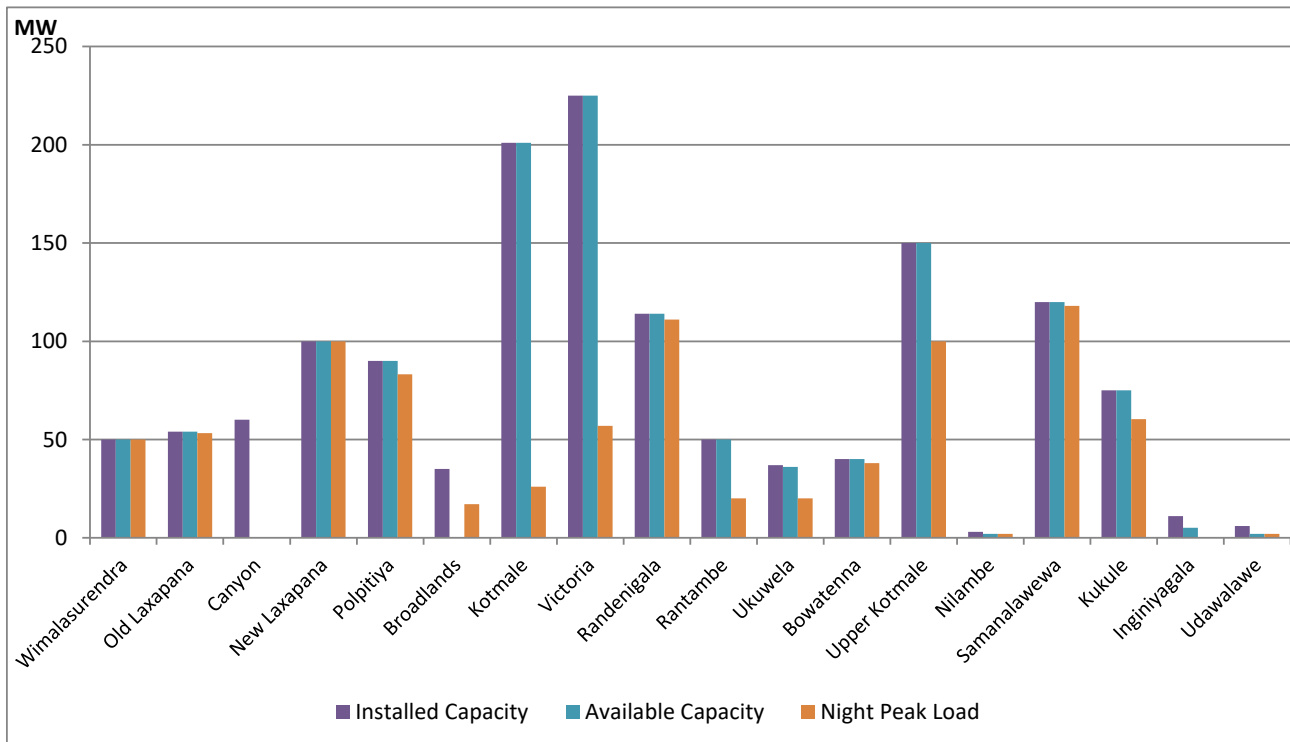


Available Generation is estimated based on plant availability at 6.00am on
Broadlands power plant is operating in the Commissioning Stage

February 8, 2022

Major Hydro Plant Loading at Night Peak

February 7, 2022



Note- Plant availability is recorded at 6.00 am on
Broadlands power plant is operating in the Commissioning Stage

February 8, 2022

Summary of Major Plant performance

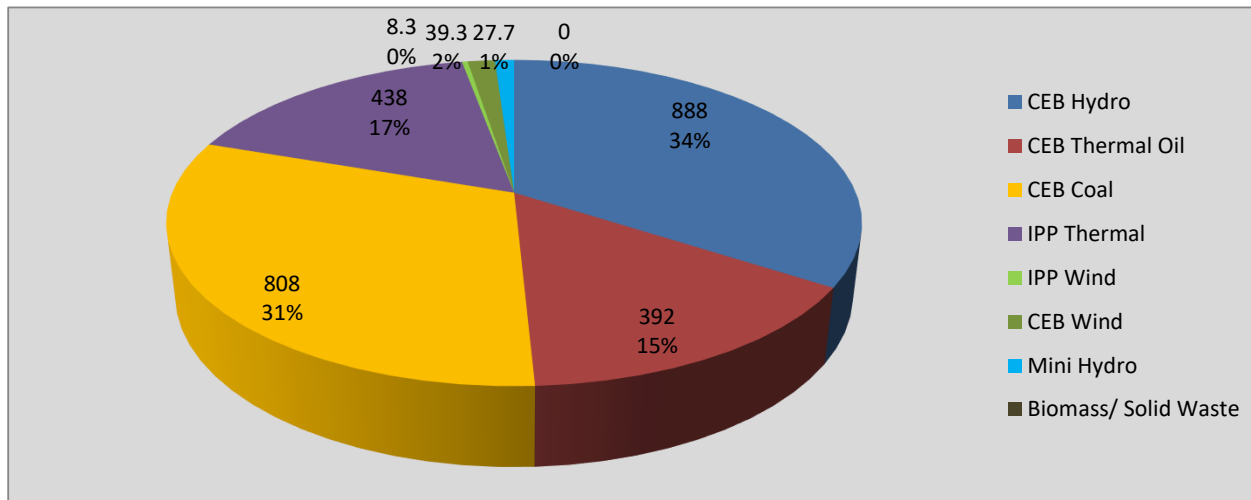
Plant	Installed Capacity (MW)	Plant Availability (MW)	Night peak Load (MW)	Plant Dispatch (MWh)
Wimalasurendra	50	50	50	475
Old Laxapana	54	54	53	1,029
Canyon	60	0	0	0
New Laxapana	100	100	100	1,408
Polpitiya	90	90	83	1,204
Broadlands	35	0	17	150
Kotmale	201	201	26	870
Victoria	225	225	57	224
Randenigala	114	114	111	1,277
Rantambe	50	50	20	510
Ukuwela	37	36	20	473
Bowatenna	40	40	38	29
Upper Kotmale	150	150	100	305
Nilambe	3	2	2	4
Samanalawewa	120	120	118	1,403
Kukule	75	75	60	307
Inginiyagala	11	5	0	40
Udawalawe	6	2	2	43
Puttalam Coal I	270	270	267	6,477
Puttalam Coal II	270	270	270	6,482
Puttalam Coal III	270	270	271	6,510
KPS Small GTs	64	0	0	0
KPS GT 7	115	0	0	0
KCCP	161	150	149	2,565
Sapugaskanda A	70	64	64	346
Sapugaskanda B	70	63	58	1,346
Uthura Janani	26	23	23	397
Barge CEB	60	60	61	1,073
CEB-Thulhiriya	10	8	8	110
CEB-Kolonnawa	20	16	14	199
CEB-Mathugama	20	11	15	166
Sojitz Kelanitissa	163	160	154	3,473
West Coast	270	270	284	5,146
Total	3,280	2,948	2,571	46,391

Plant availability is the availability recorded at 6 am on

February 8, 2022

Contribution to the Night Peak in MW

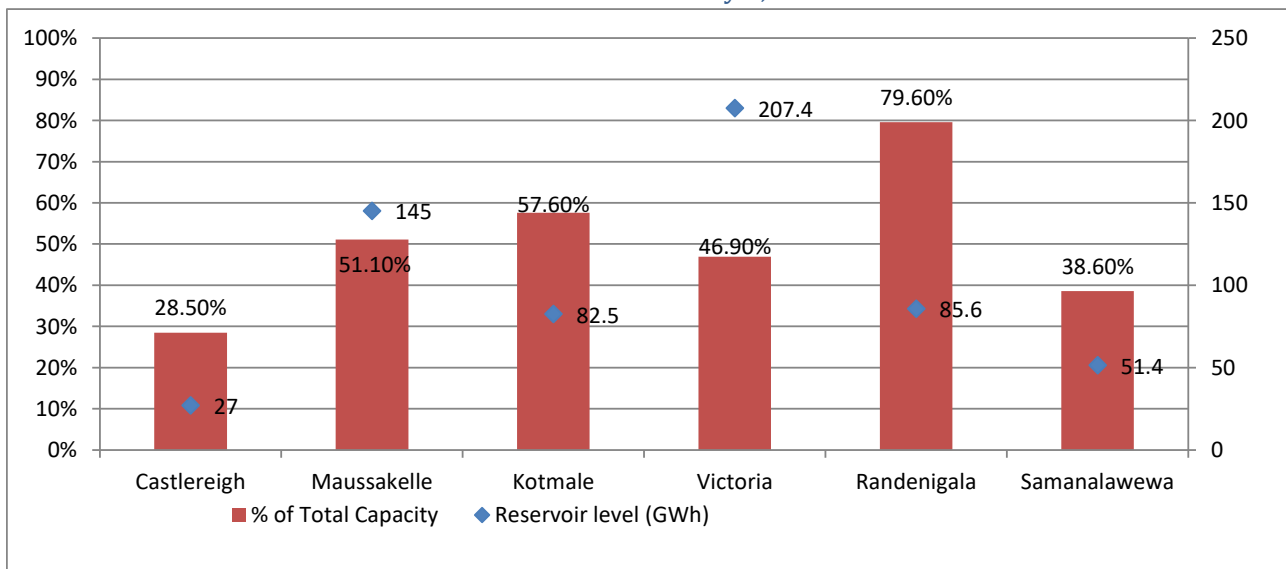
February 7, 2022



Night Peak*	2,601.3 MW
Day Peak	2,236.5 MW
Minimum Demand	1,286.8 MW

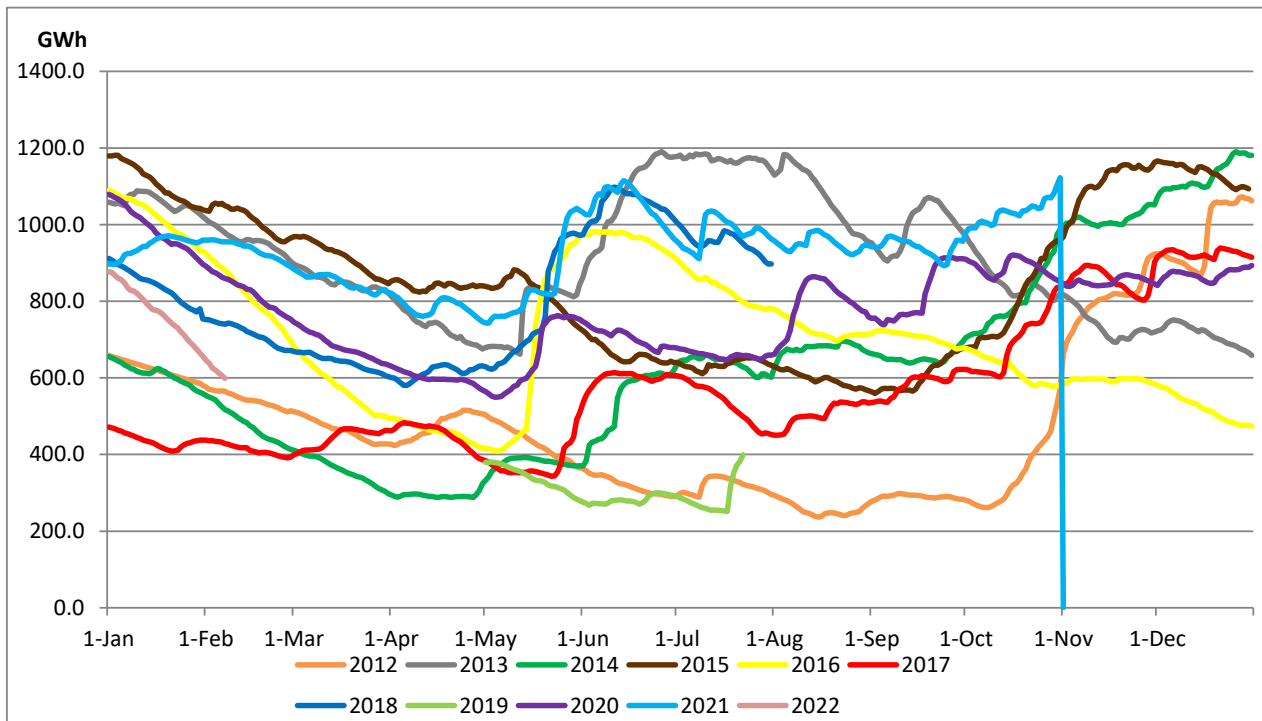
Above figures are excluding contribution from Roof Top Solar, 1MW solar, certain Wind plants and Mini Hydro plants

Reservoir Levels - as at 06.00 Hr on February 8, 2022



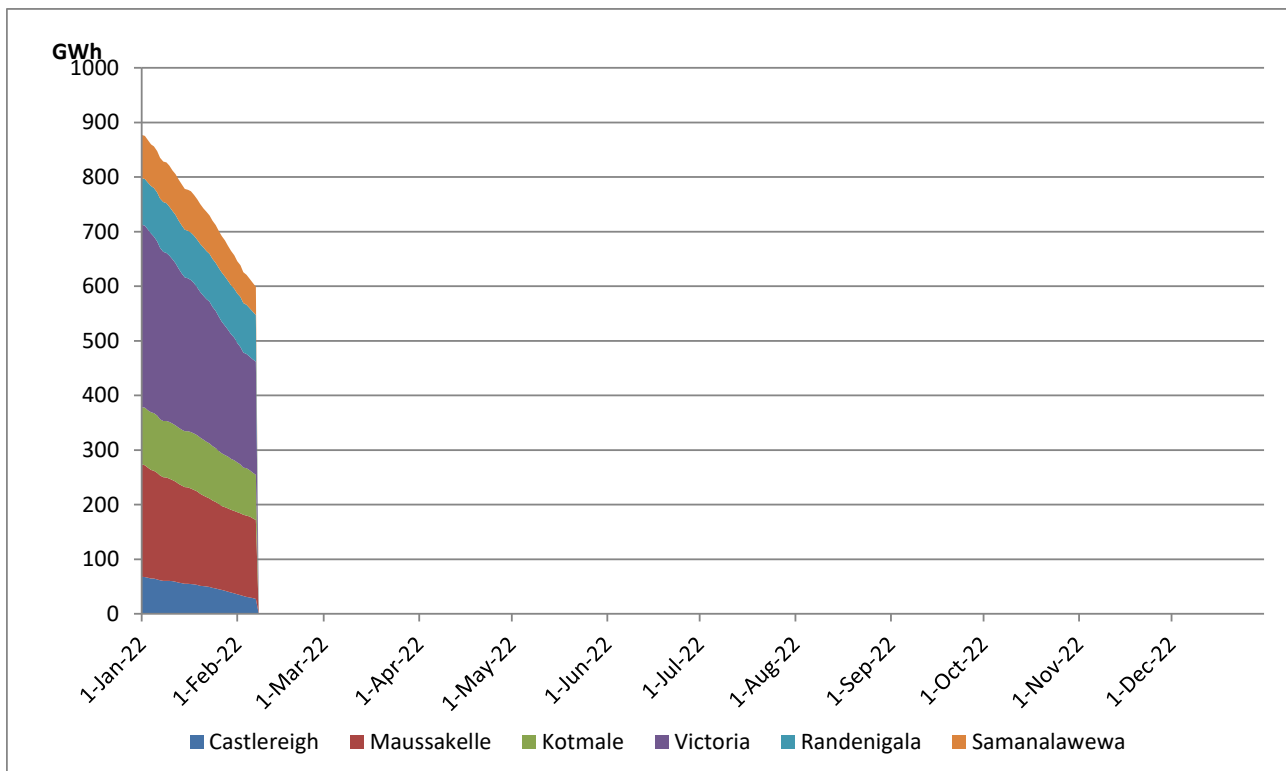
Total Reservoir Level(GWh)	598.9
% of Total capacity	50.4%

Comparison of Total Reservoir Storage Levels with Past Years

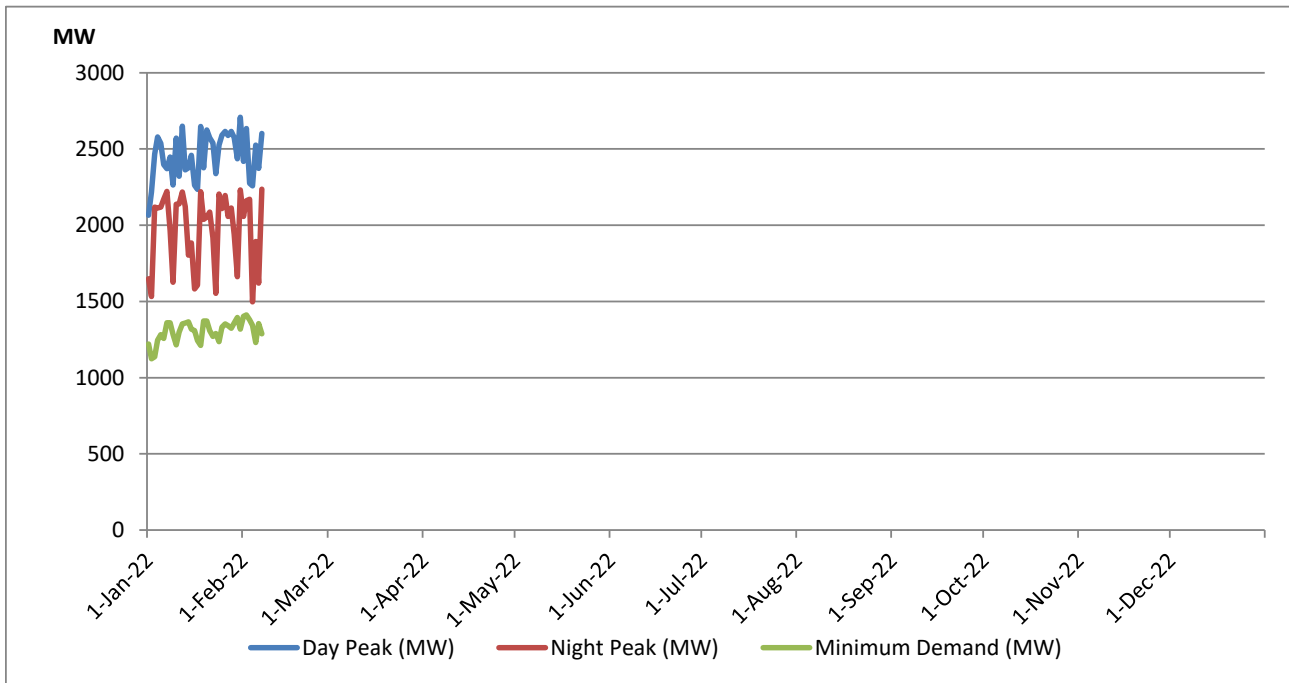


Data for 2018 and 2019 are only available for part of year.

Variation of Major Hydro Reservoir Levels in the current year (GWh)



Variation of Demand during the current year

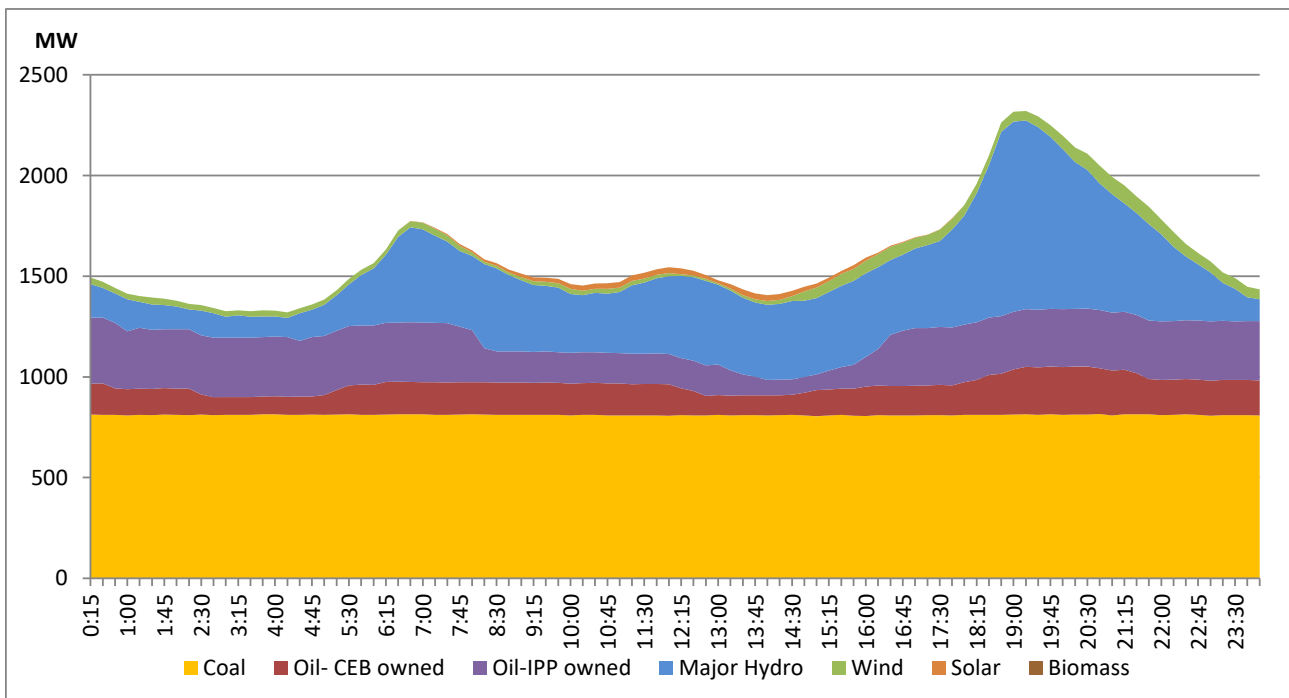


The above figures are excluding contribution from Roof Top Solar, 1MW solar, certain Wind plants and Mini Hydro plants

Daily Load Curve of the Previous day

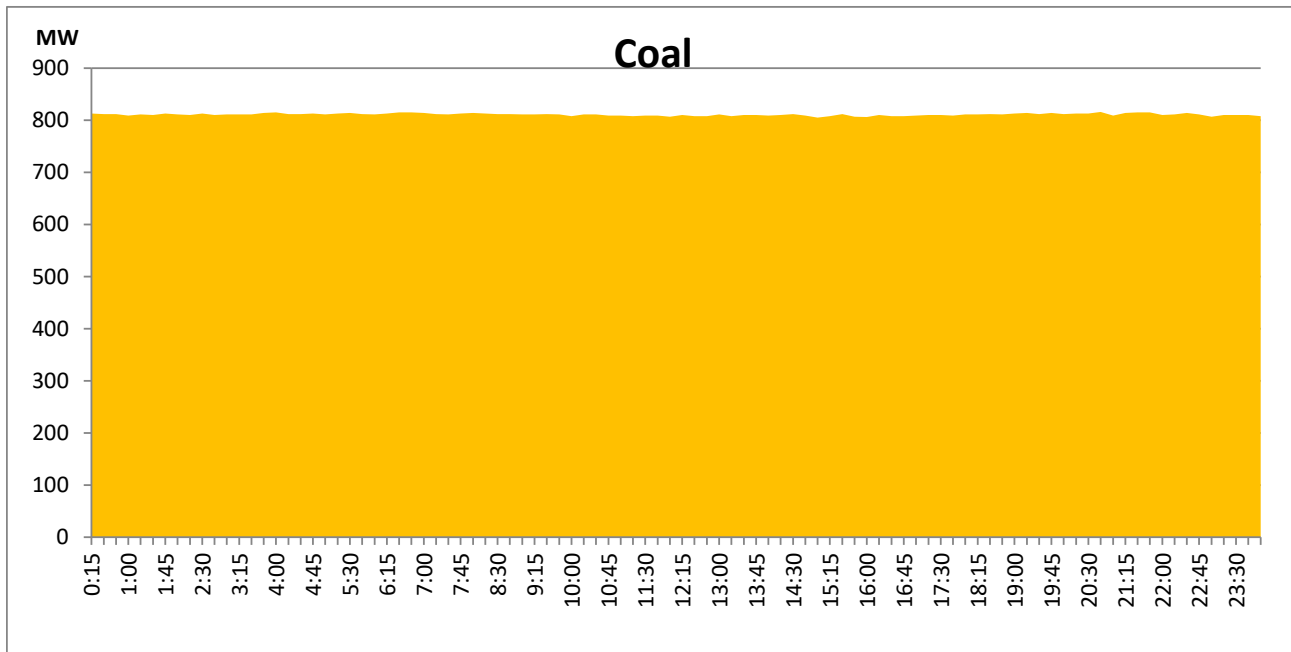
February 6, 2022

Solar and wind data is based on Telemetered Power Stations only



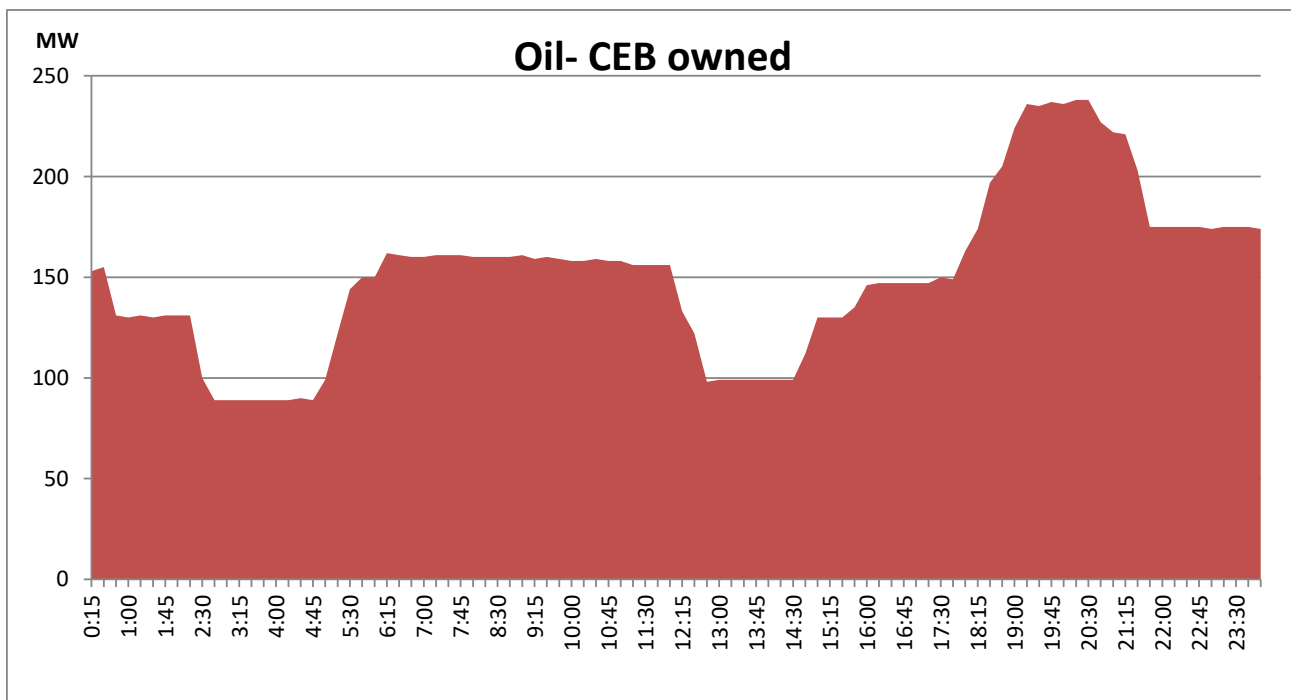
Coal Generation during the Previous day

February 6, 2022



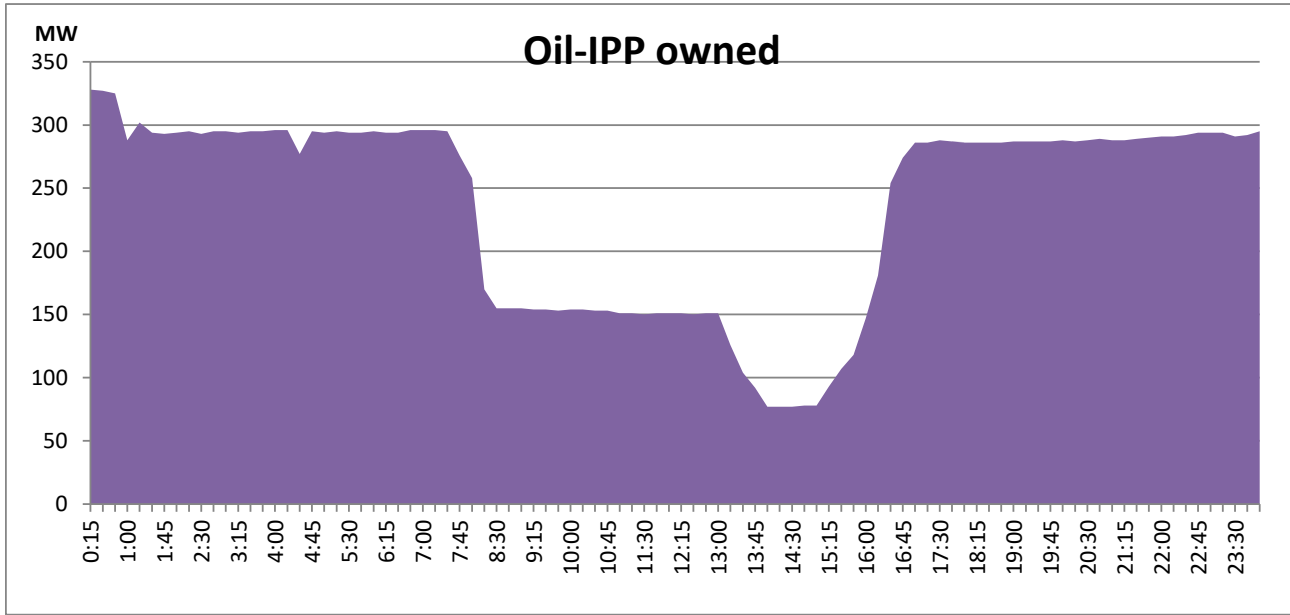
CEB Oil Plant Generation during the Previous day

February 6, 2022



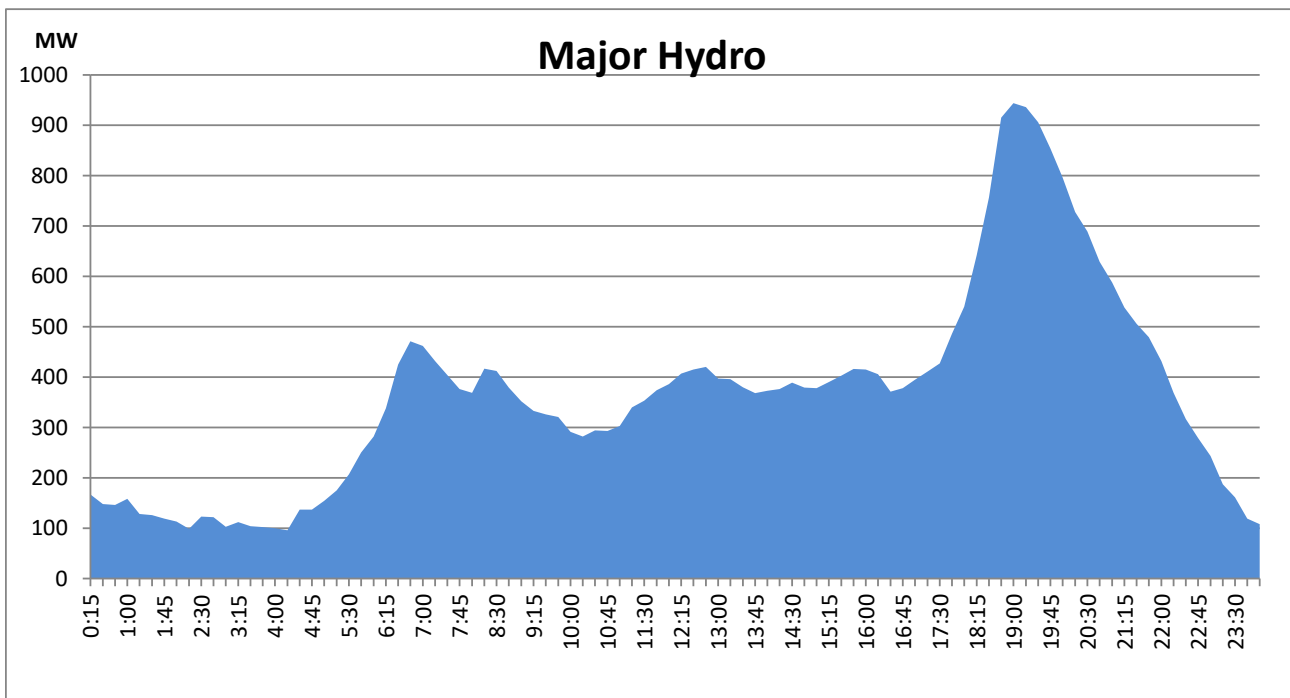
IPP Oil Plant Generation during the Previous day

February 6, 2022



Major Hydro Generation during the Previous day

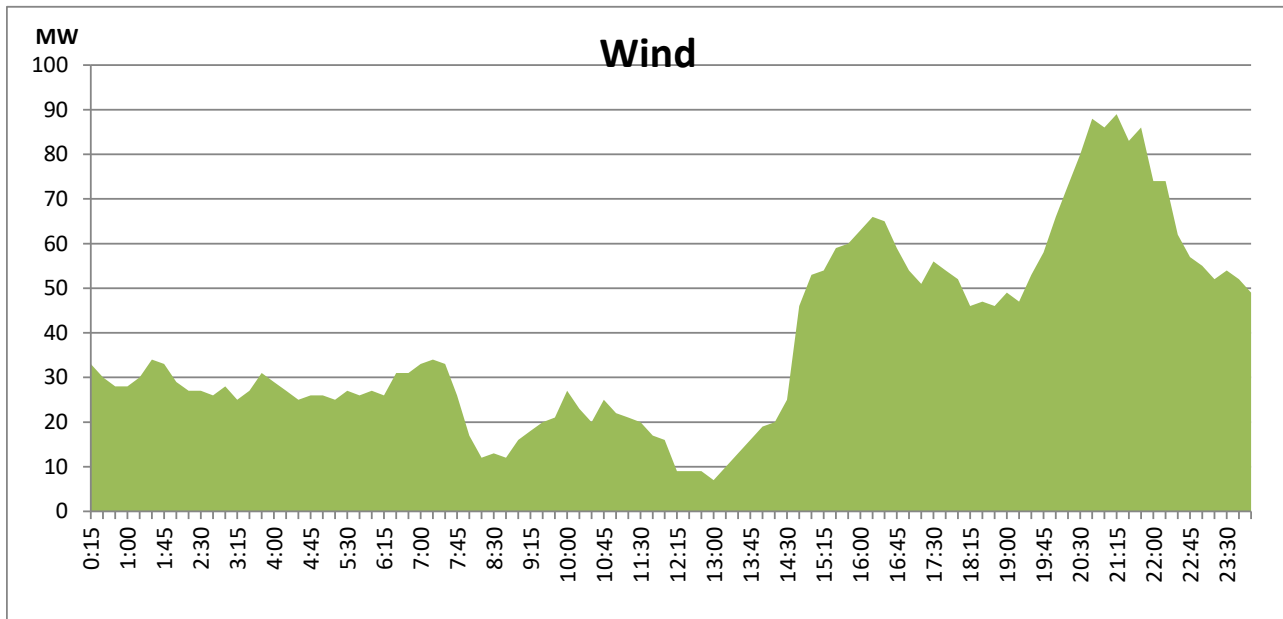
February 6, 2022



Wind Generation during the Previous day

February 6, 2022

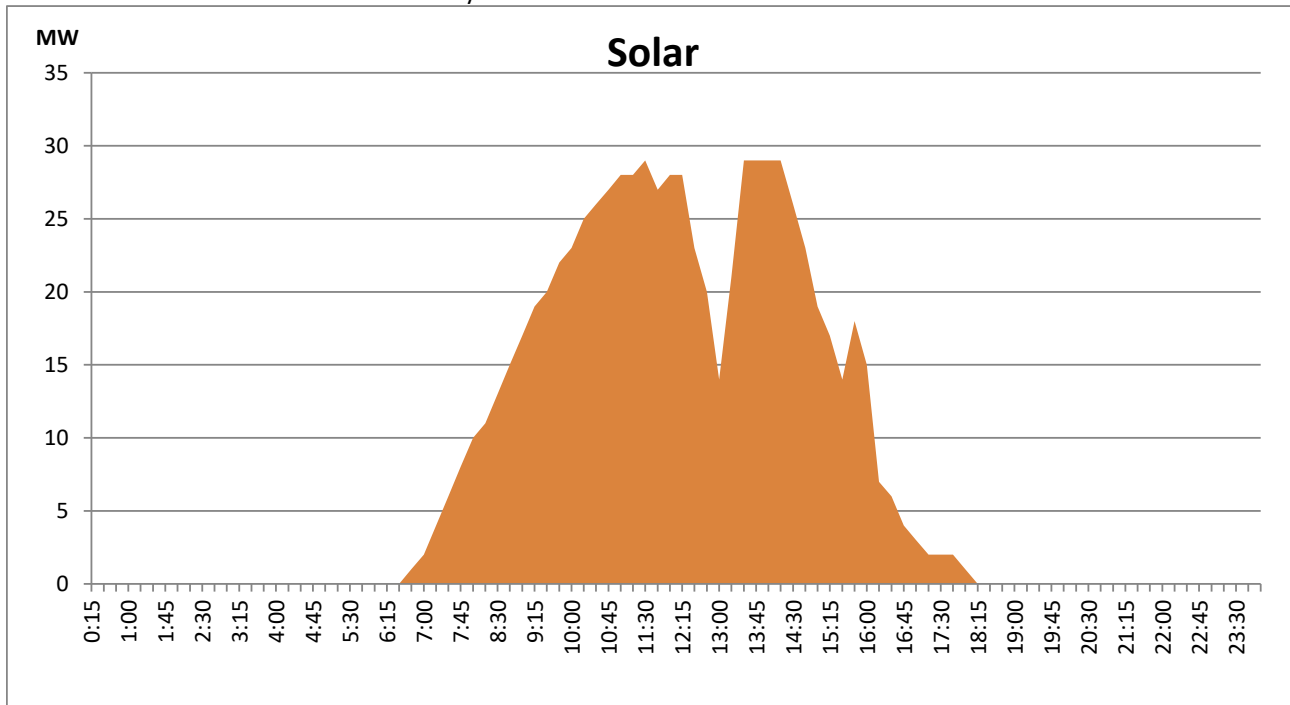
Based on Telemetered Power Stations only



Solar Generation during the Previous day

February 6, 2022

Based on Telemetered Power Stations only



Thermal Plant Fuel types

Power Station	Primary Fuel
CEB Thermal	
Sapugaskanda 1	Heavy Fuel
Sapugaskanda 2	Heavy Fuel
Kelanitissa Small Gas Turbines	Auto Diesel
GT 7 - Kelanitissa	Auto Diesel
Kelanitissa CCY	Naptha & Diesel
Lakvijaya 1	Coal
Lakvijaya 2	Coal
Lakvijaya 3	Coal
Uthuru Janani	Heavy Fuel
Barge CEB	Furnace Oil

Power Station	Primary Fuel
Private Thermal	
Sojitz - Kelanitissa	Auto Diesel
West Coast	Low Sulphur Furnace oil

Major Incidents during the day -as reported by CEB morning of
1) Nil.

February 8, 2022