

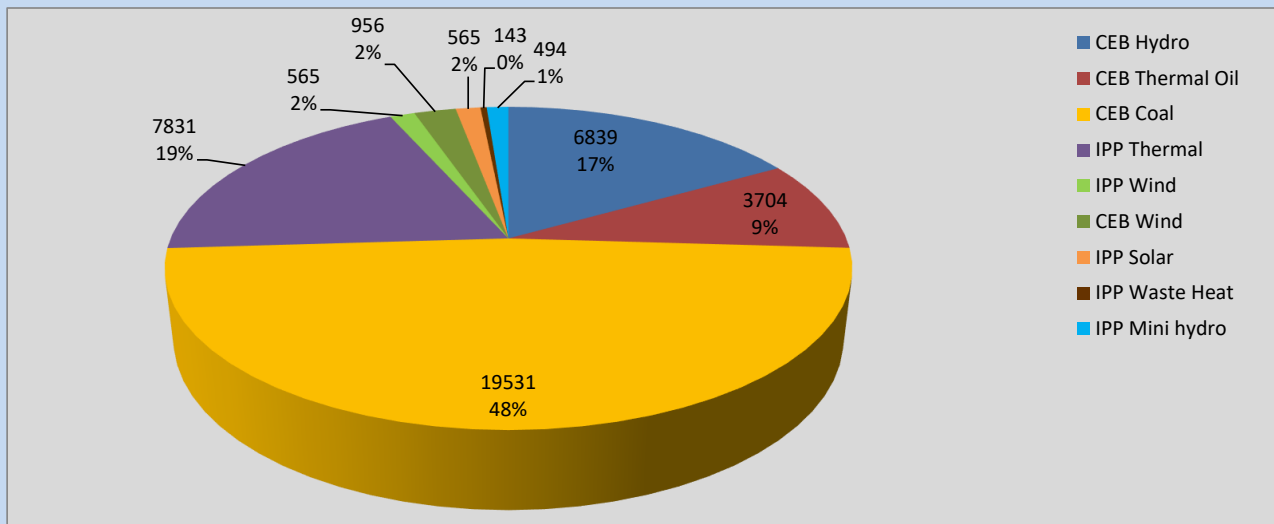
Generation and Reservoirs Statistics

March 6, 2022



PUBLIC UTILITIES COMMISSION OF SRI LANKA

Daily Generation Mix in MWh



Total Generation **40,386 MWh**

Note: Above data is excluding contribution from Roof Top Solar, 1MW Solar and certain Mini Hydro plants

Cumulative Dispatch

Note: Following data is Excluding contribution from Roof Top Solar, 1MW solar and Mini Hydro plants

For Current Month

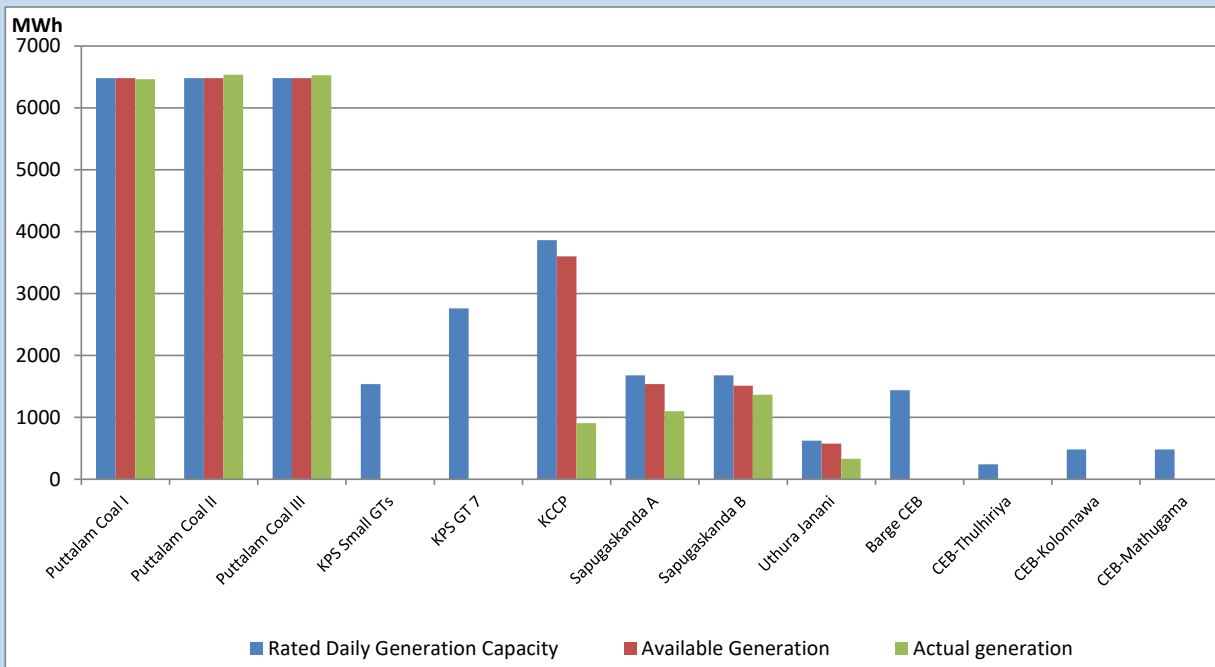
Category	Dispatch (GWh)	Percentage
CEB Hydro	52.76	20.64%
CEB Thermal Oil	31.49	12.32%
CEB Coal	117.36	45.92%
IPP Thermal	37.75	14.77%
SPP Wind	4.28	1.67%
CEB Wind	6.11	2.39%
SPP Solar	1.31	0.51%
SPP Solid Waste	1.29	0.50%
Mini Hydro	3.24	1.27%
Total	255.59	

For Current Year

Category	Dispatch (GWh)	Percentage
CEB Hydro	730.6	25.92%
CEB Thermal Oil	443.7	15.74%
CEB Coal	1,060.9	37.64%
IPP Thermal	429.2	15.23%
SPP Wind	32.4	1.15%
CEB Wind	40.4	1.43%
SPP Solar	16.6	0.59%
SPP Solid Waste	12.4	0.44%
Mini Hydro	52.9	1.88%
Total	2,818.8	

CEB owned Thermal Plant Dispatch

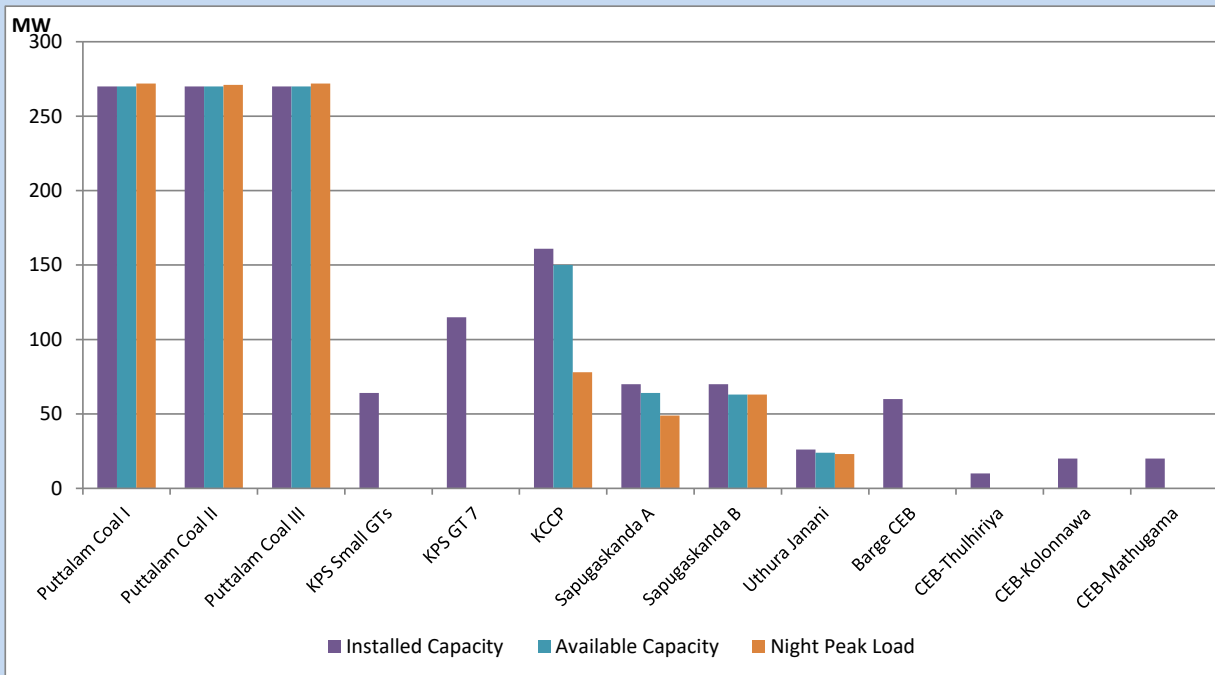
March 6, 2022



Available Generation is estimated based on plant availability at 6.00am on

March 7, 2022

CEB owned Thermal Plant Loading at the Night Peak



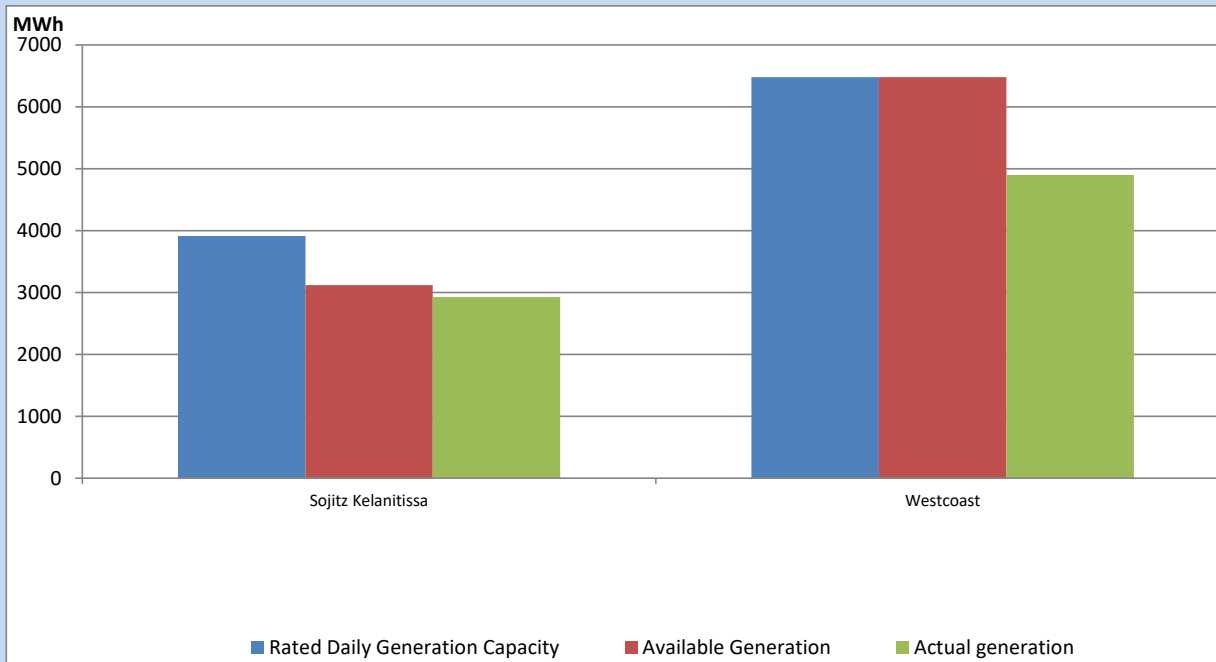
Note- Plant availability is recorded at 6.00 am on

March 7, 2022

IPP owned Thermal Plant Dispatch

March 6, 2022

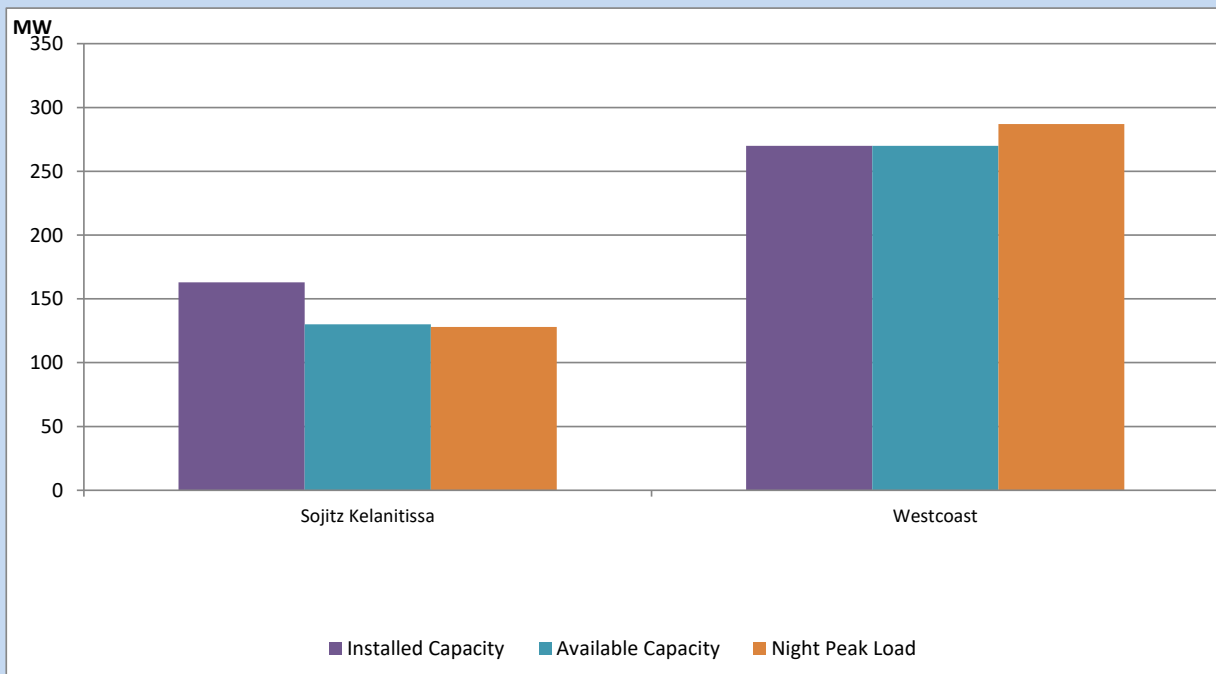
ACE Embilipitiya, ACE Matara, Asia Power, V Power Pallekale, Vpower Galle, V Power Horana, Vpower Hambantota, Vpower Valachchena and Altaqa Mahiyanganaya are not available due to expiration of PPAs



Available Generation is estimated based on plant availability at 6.00am on

March 7, 2022

IPP owned Thermal Plant Loading at the Night Peak

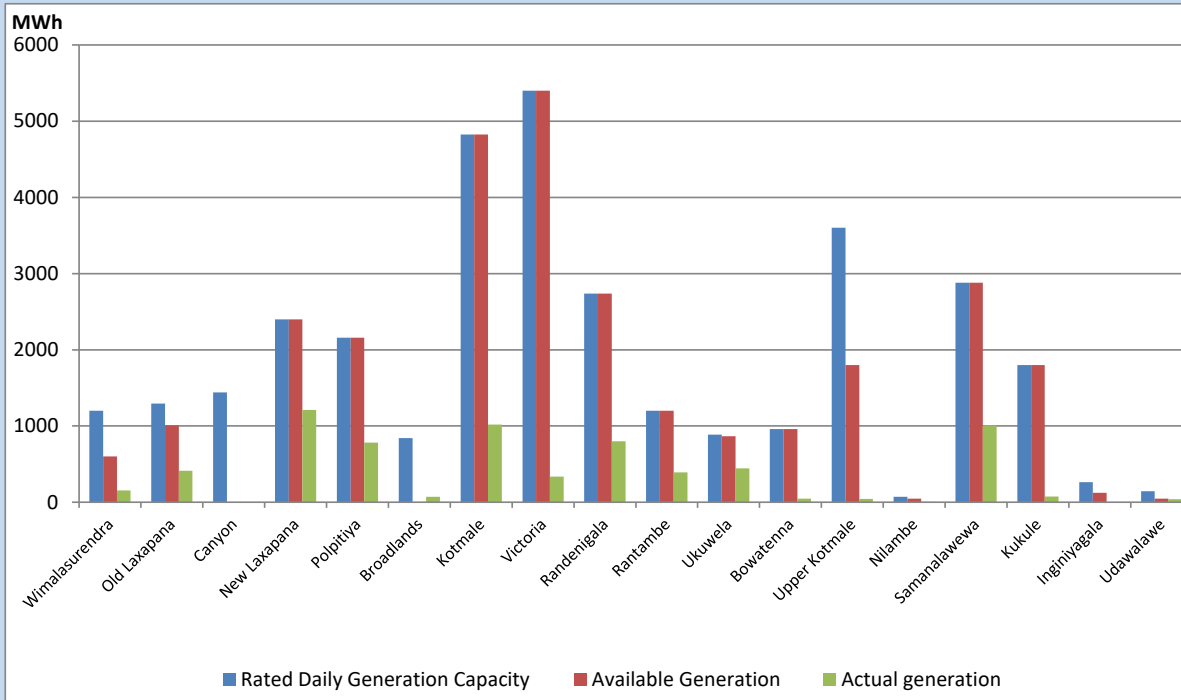


Note- Plant availability is recorded at 6.00 am on

March 7, 2022

Major Hydro Plant Dispatch

March 6, 2022

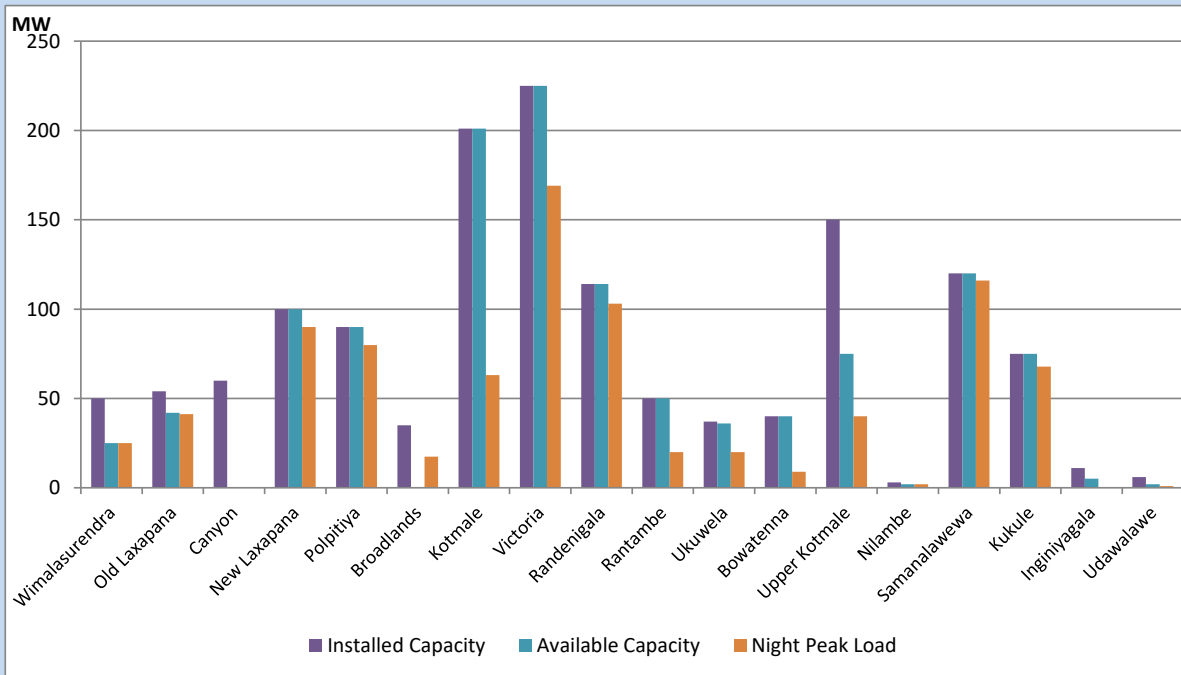


Available Generation is estimated based on plant availability at 6.00am on
Broadlands power plant is operating in the Commissioning Stage

March 7, 2022

Major Hydro Plant Loading at Night Peak

March 6, 2022



Note- Plant availability is recorded at 6.00 am on
Broadlands power plant is operating in the Commissioning Stage

March 7, 2022

Summary of Major Plant performance

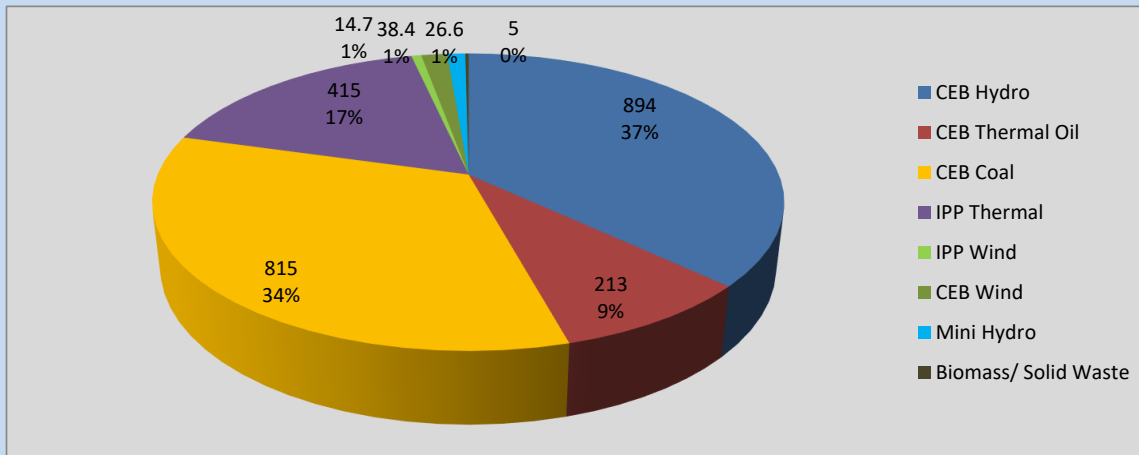
Plant	Installed Capacity	Plant Availability	Night peak Load	Plant Dispatch
	(MW)	(MW)	(MW)	(MWh)
Wimalasurendra	50	25	25	153
Old Laxapana	54	42	41	414
Canyon	60	0	0	0
New Laxapana	100	100	90	1,212
Polpitiya	90	90	80	782
Broadlands	35	0	17	71
Kotmale	201	201	63	1,020
Victoria	225	225	169	336
Randenigala	114	114	103	801
Rantambe	50	50	20	391
Ukuwela	37	36	20	445
Bowatenna	40	40	9	45
Upper Kotmale	150	75	40	44
Nilambe	3	2	2	4
Samanalawewa	120	120	116	1,009
Kukule	75	75	68	74
Inginiyagala	11	5	0	0
Udawalawe	6	2	1	38
Puttalam Coal I	270	270	272	6,464
Puttalam Coal II	270	270	271	6,538
Puttalam Coal III	270	270	272	6,529
KPS Small GTs	64	0	0	0
KPS GT 7	115	0	0	0
KCCP	161	150	78	905
Sapugaskanda A	70	64	49	1,101
Sapugaskanda B	70	63	63	1,366
Uthura Janani	26	24	23	332
Barge CEB	60	0	0	0
CEB-Thulhiriya	10	0	0	0
CEB-Kolonnawa	20	0	0	0
CEB-Mathugama	20	0	0	0
Sojitz Kelanitissa	163	130	128	2,928
West Coast	270	270	287	4,903
Total	3,280	2,713	2,392	40,386

Plant availability is the availability recorded at 6 am on

March 7, 2022

Contribution to the Night Peak in MW

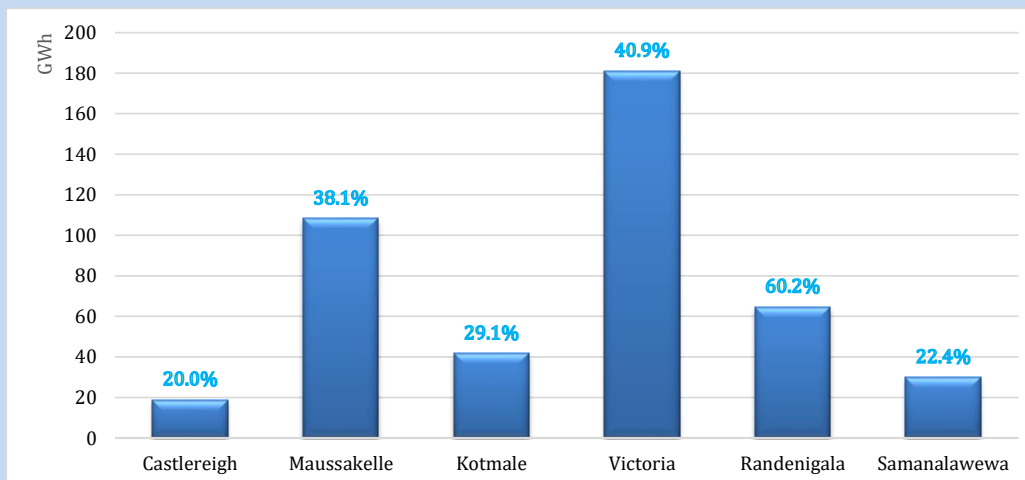
March 6, 2022



Night Peak*	2,422.0 MW
Day Peak	1,551.4 MW
Minimum Demand	1,446.1 MW

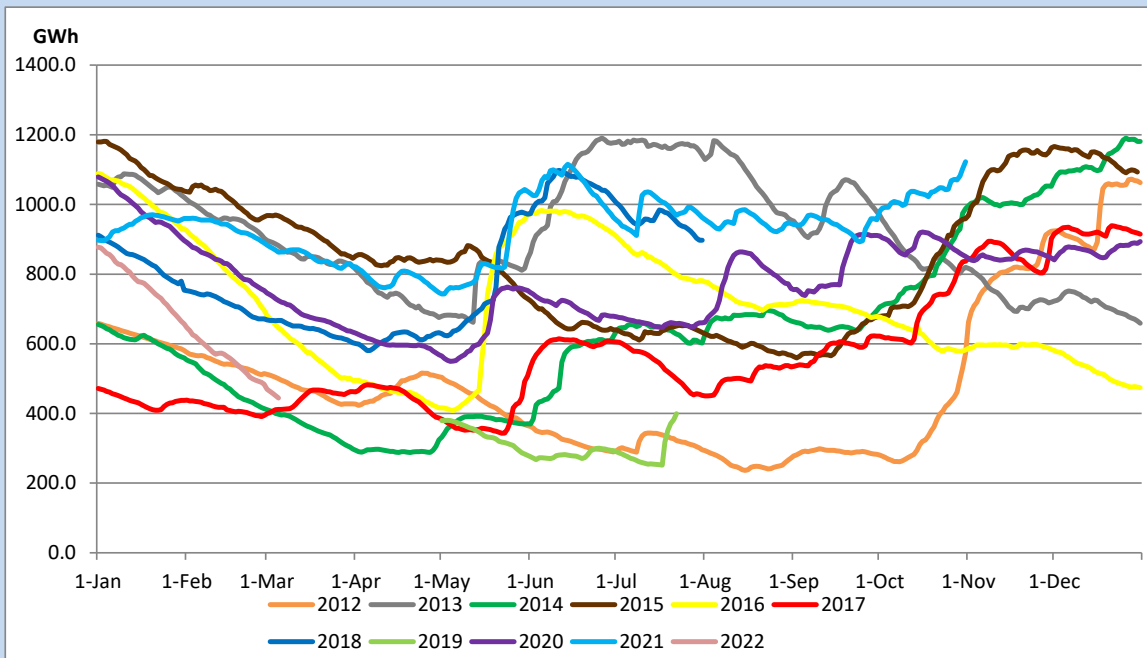
Above figures are excluding contribution from Roof Top Solar, 1MW solar, certain Wind plants and Mini Hydro plants

Reservoir Levels - as at 06.00 Hr on March 7, 2022



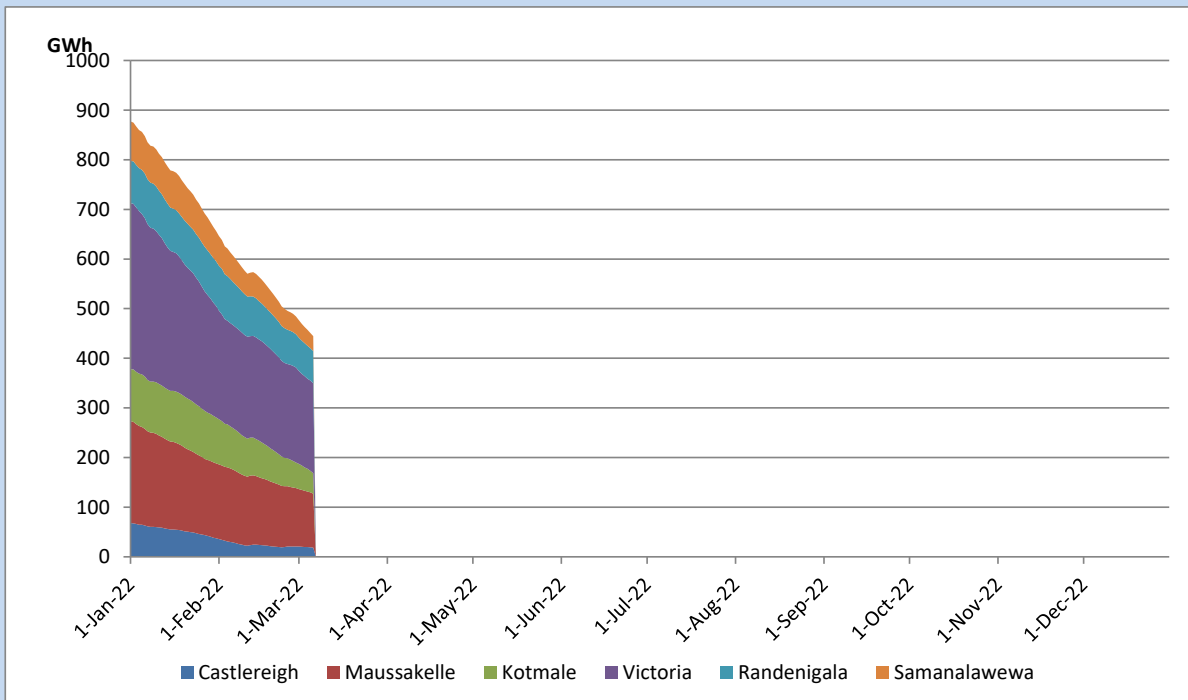
Total Reservoir Level	444.4 GWh
% of Total capacity	35.1%

Comparison of Total Reservoir Storage Levels with Past Years

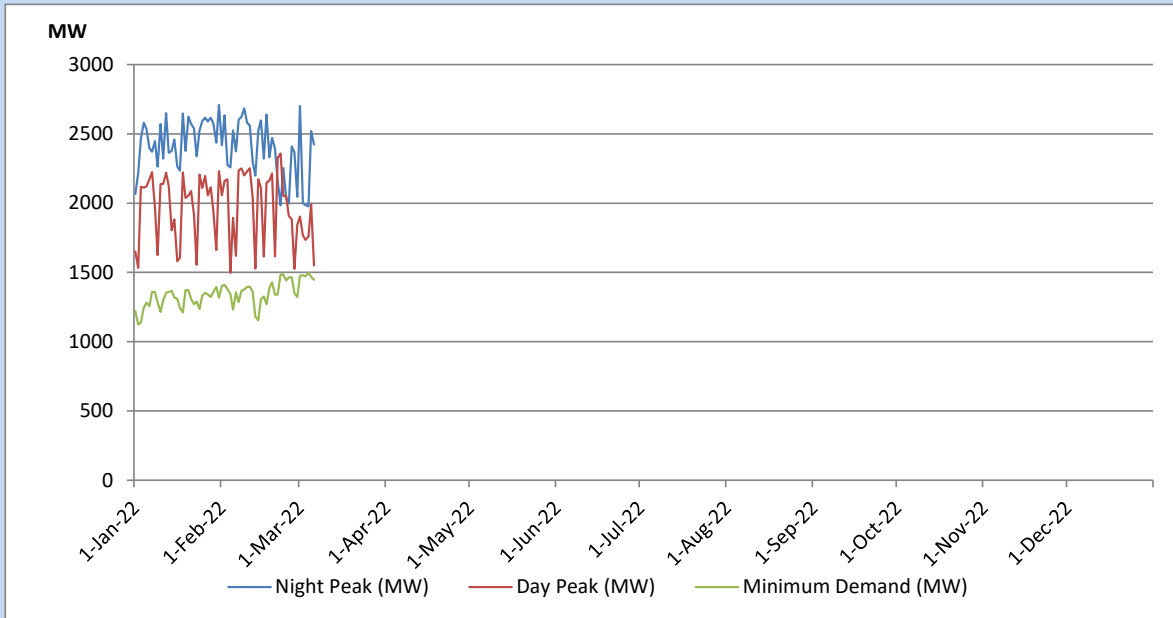


Data for 2018 and 2019 are only available for part of year.

Variation of Major Hydro Reservoir Levels in the current year (GWh)



Variation of Demand during the current year

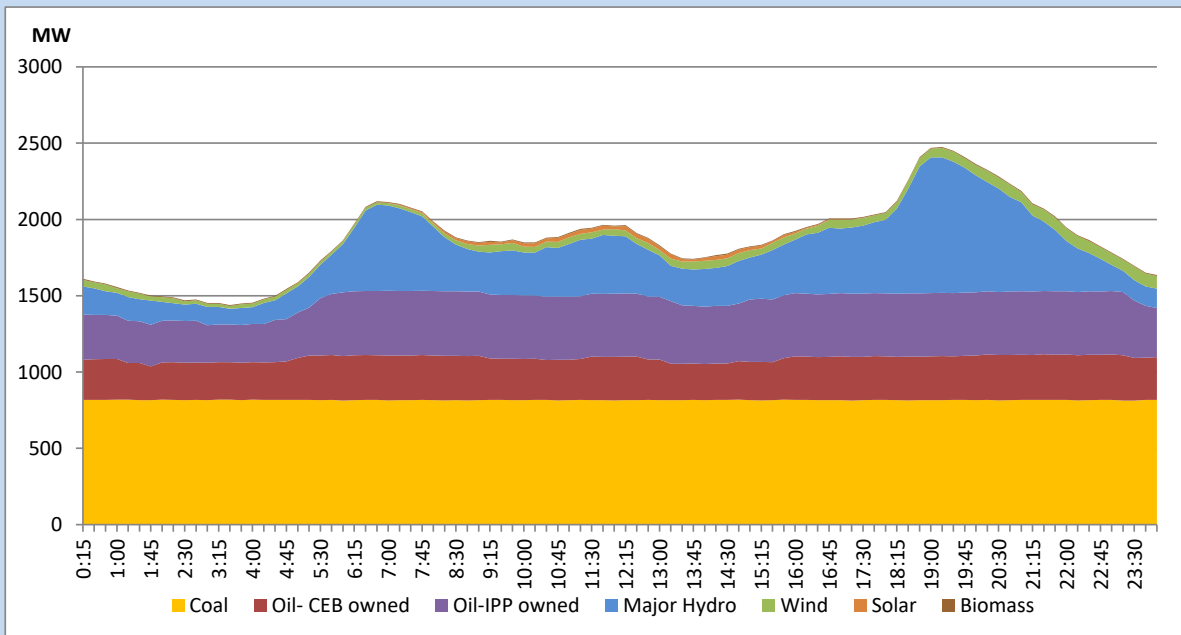


The above figures are excluding contribution from Roof Top Solar, 1MW solar, certain Wind plants and Mini Hydro plants

Daily Load Curve of the Previous day

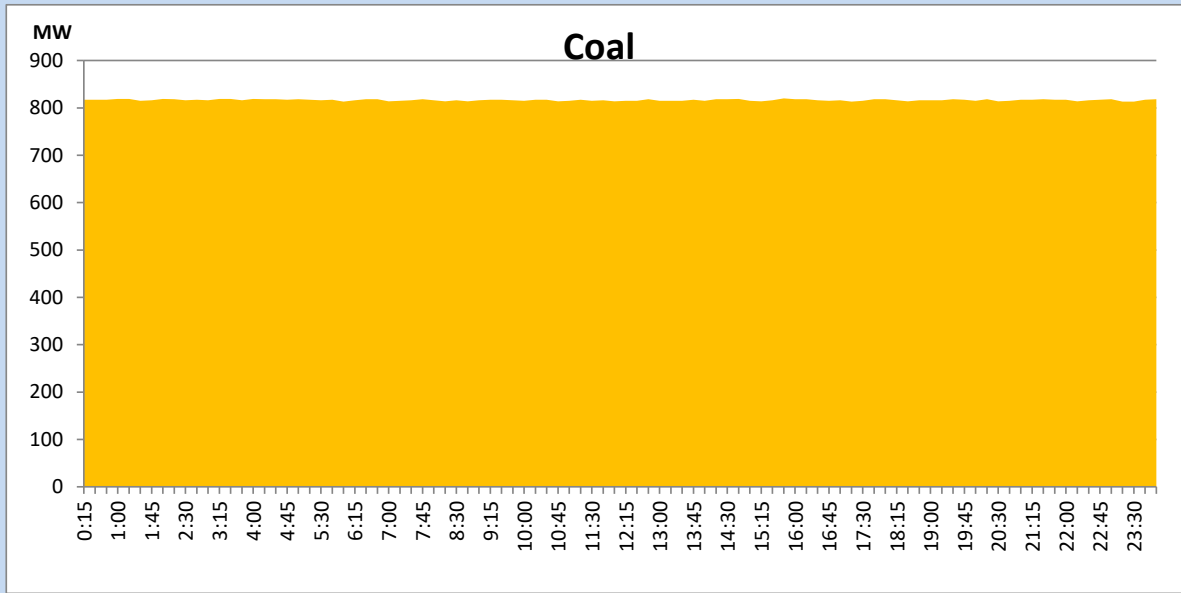
March 5, 2022

Solar and wind data is based on Telemetered Power Stations only



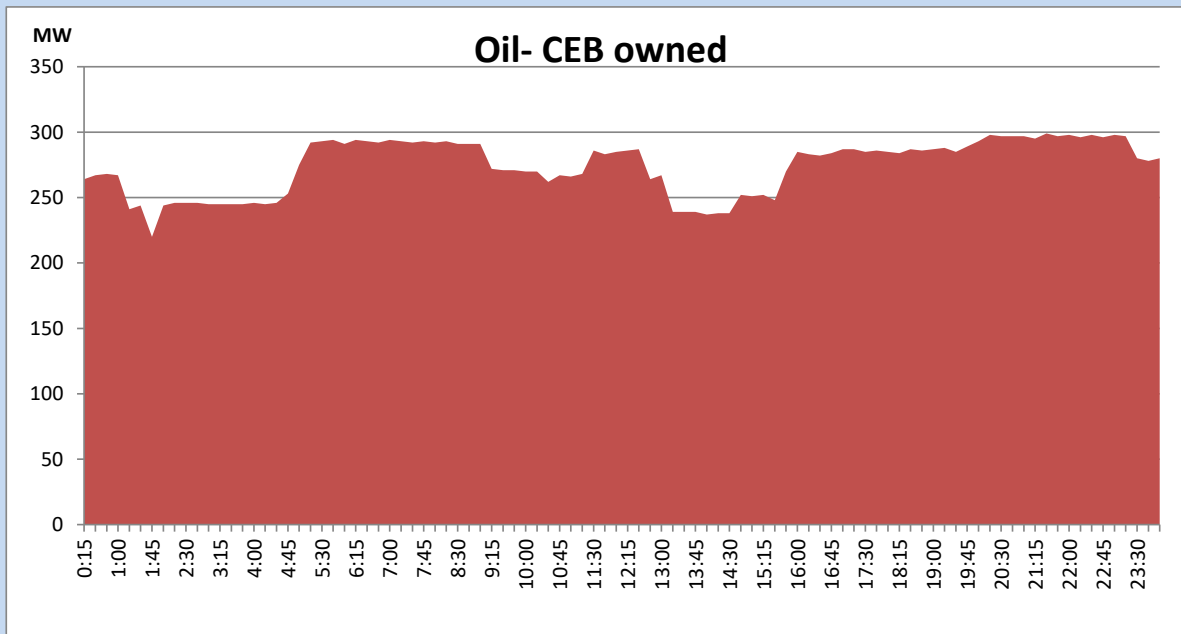
Coal Generation during the Previous day

March 5, 2022



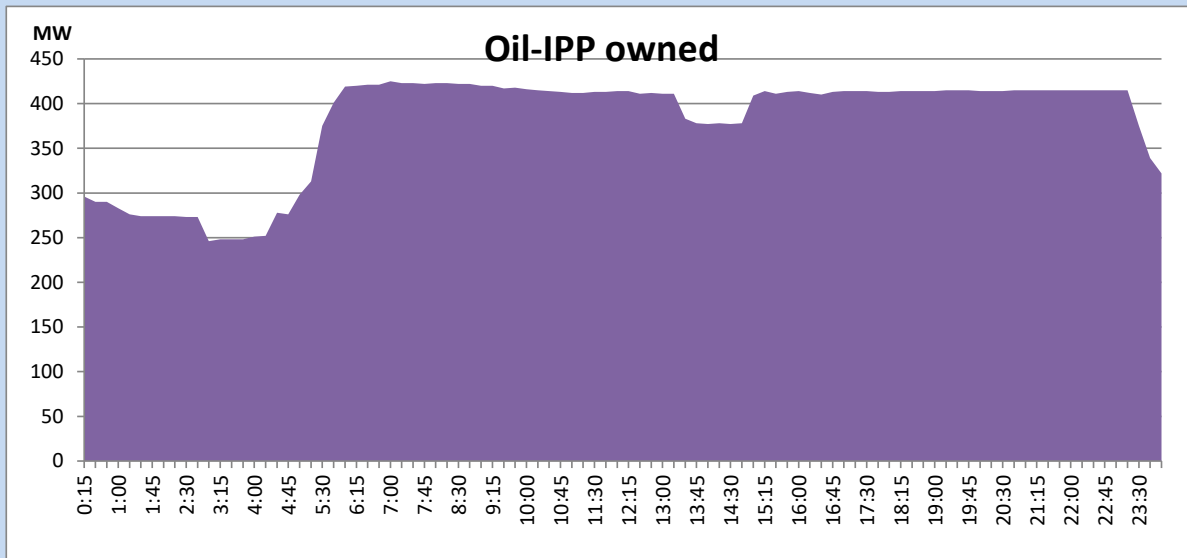
CEB Oil Plant Generation during the Previous day

March 5, 2022



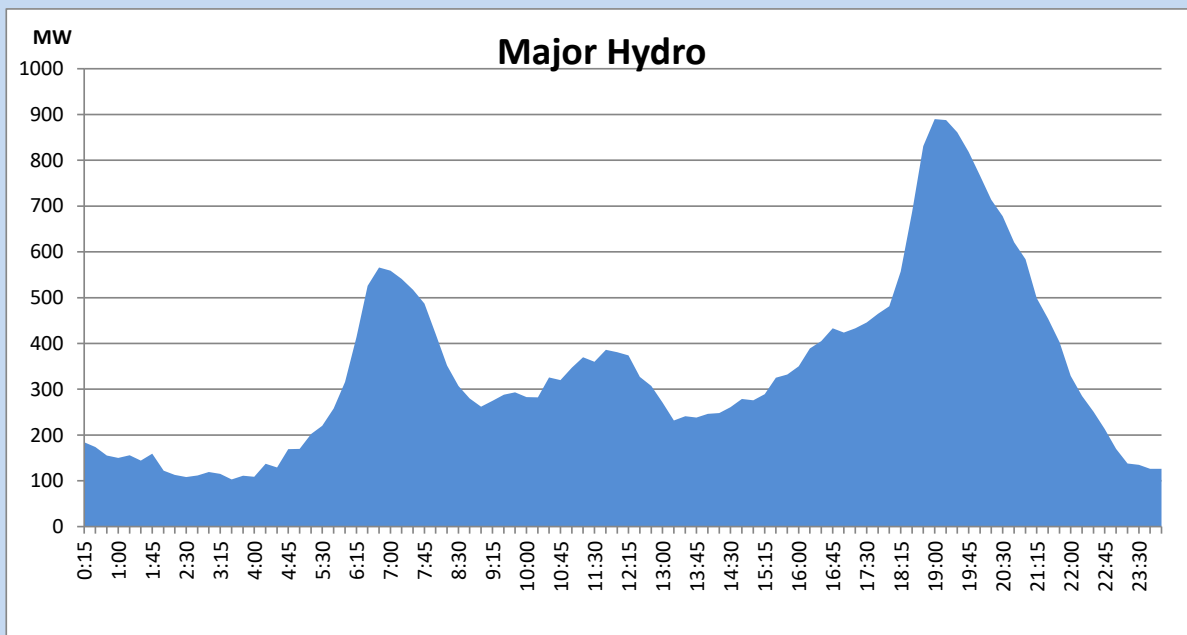
IPP Oil Plant Generation during the Previous day

March 5, 2022



Major Hydro Generation during the Previous day

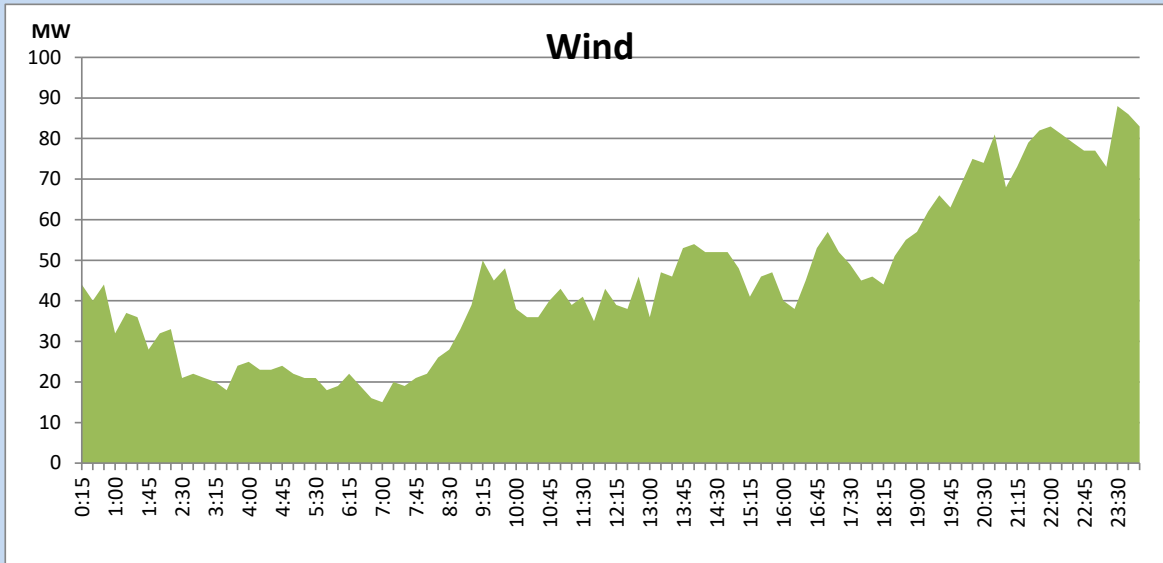
March 5, 2022



Wind Generation during the Previous day

March 5, 2022

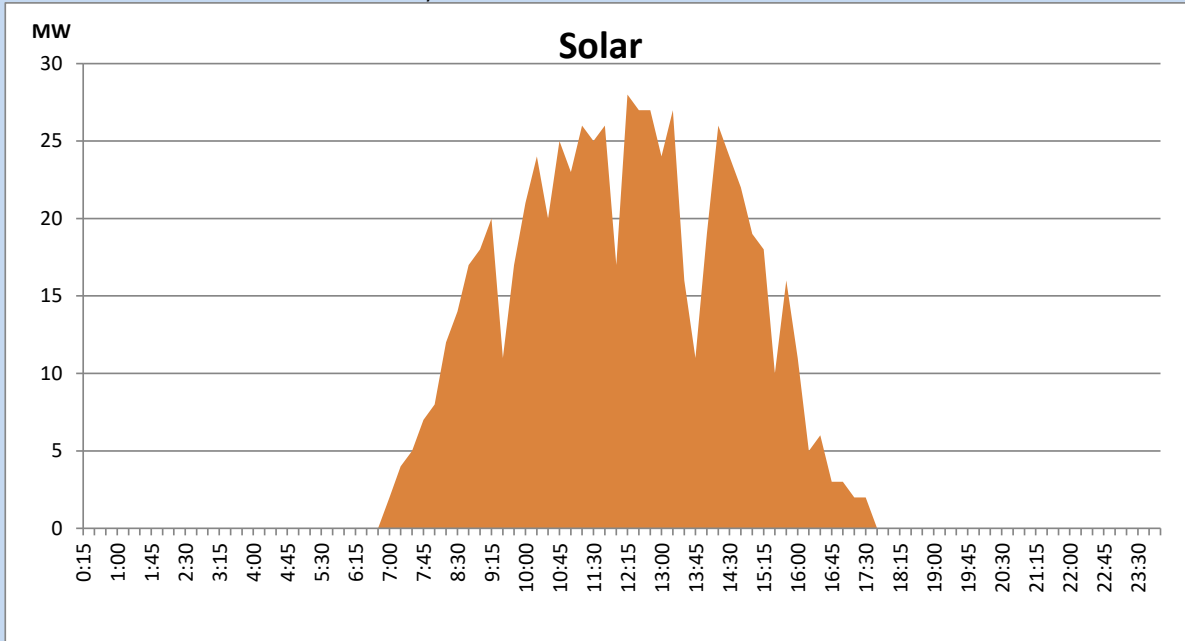
Based on Telemetered Power Stations only



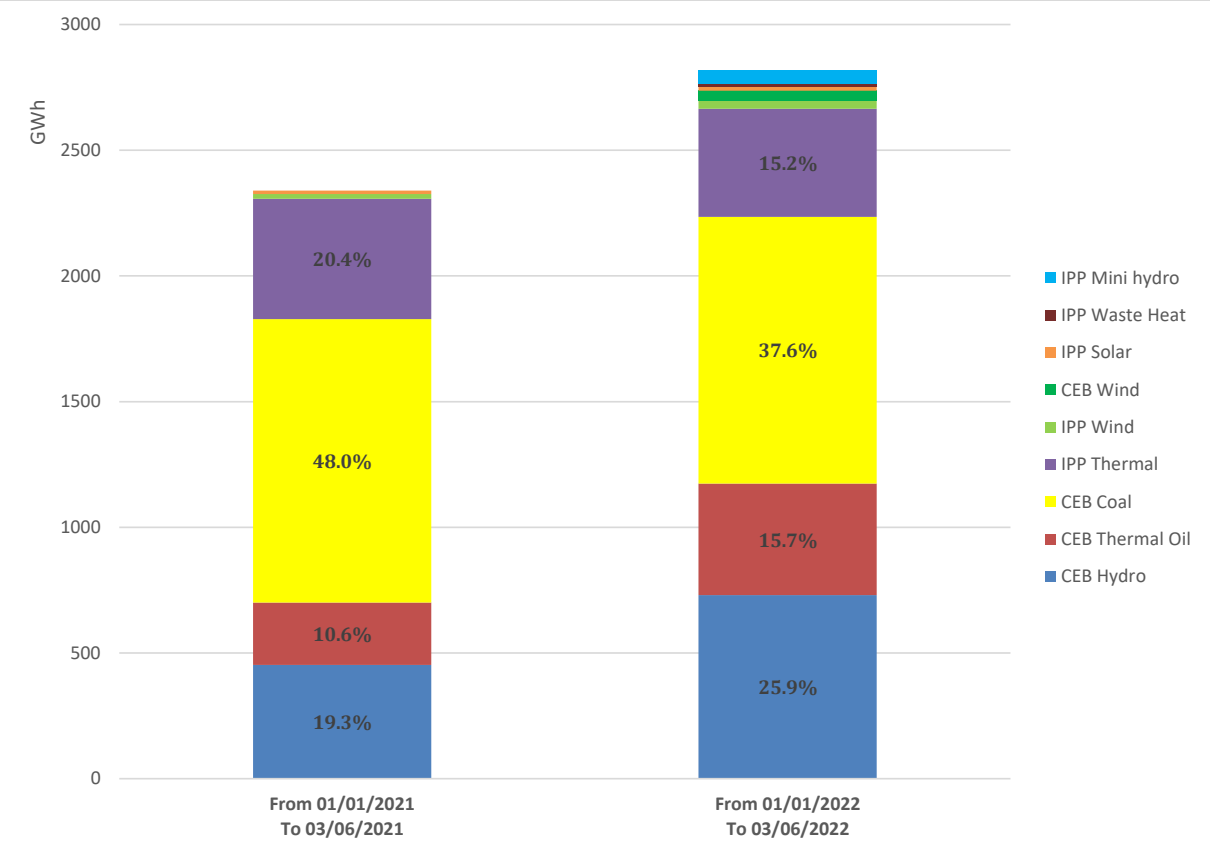
Solar Generation during the Previous day

March 5, 2022

Based on Telemetered Power Stations only



Cumulative Dispatch Comparison with Last Year



Thermal Plant Fuel types

Power Station	Primary Fuel
CEB Thermal	
Sapugaskanda 1	Heavy Fuel
Sapugaskanda 2	Heavy Fuel
Kelanitissa Small Gas Turbines	Auto Diesel
GT 7 - Kelanitissa	Auto Diesel
Kelanitissa CCY	Naphtha & Diesel
Lakvijaya 1	Coal
Lakvijaya 2	Coal
Lakvijaya 3	Coal
Uthuru Janani	Heavy Fuel
Barge CEB	Heavy Fuel

Power Station	Primary Fuel
Private Thermal	
Sojitz - Kelanitissa	Auto Diesel
West Coast	Auto Diesel

Major Incidents during the day -as reported by CEB morning of

March 7, 2022

- 1) Rotational manual load shedding was carried out from 09:00hrs to 16:00hrs.
- 2) Kappalture 132/33 kV T/F 01 tripped at 17:54hrs due to the operation of differential protection . T/F 01 yet to be energized.
- 3) Panni -Kesbewa and Panni -Panad- Kalutara cct tripped at 19:23hrs from Panni end due to O/C protection with sudden deloading of Kukule both m/cs (due to head loss high alarm) causing Panad, Kalutara ,Kesbewa , Horana ,Matugama, Ambal, and New Galle GSS to be dead.
Panni - Kesbewa and Panni -Panad-Kalutara ccts energized at 19:34hrs and 19:36hrs respectively. All affected GSS were energized by 19:43hrs.
Kukule both m/cs made available from 22:18hrs
- 4) KCCP and KPS GT07 resumed generation at 17:18hrs and 04:52hrs(07/03/2022) respectively after receiving fuel.
- 5) Sojitz performed a forced shutdown at 00:58hrs (07/03/2022) due to lack of fuel.