

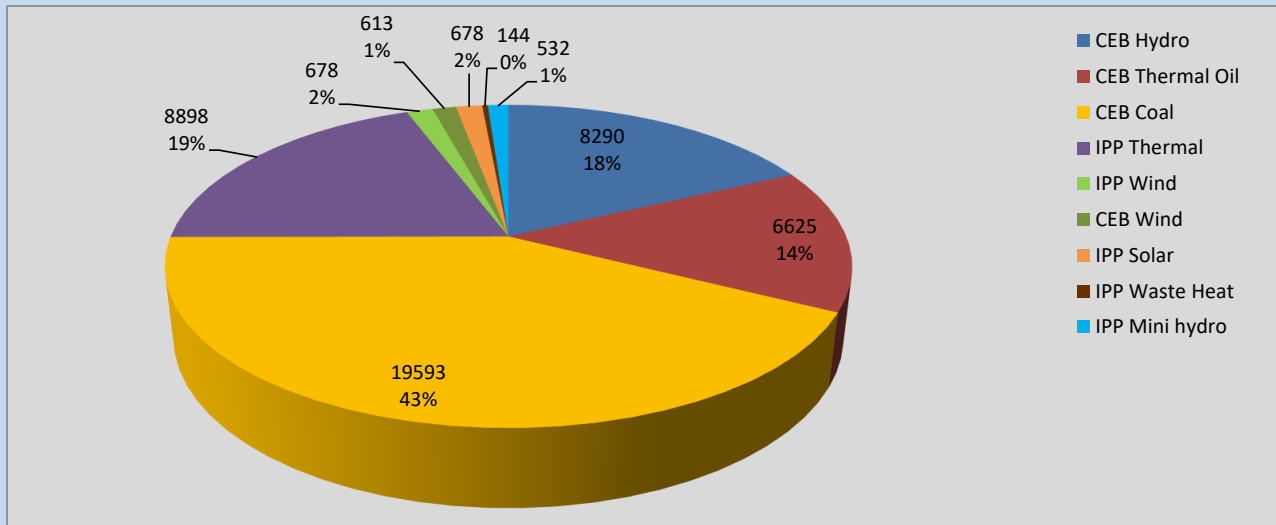
Generation and Reservoirs Statistics

March 5, 2022



PUBLIC UTILITIES COMMISSION OF SRI LANKA

Daily Generation Mix in MWh



Total Generation **45,670 MWh**

Note: Above data is excluding contribution from Roof Top Solar, 1MW Solar and certain Mini Hydro plants

Cumulative Dispatch

Note: Following data is Excluding contribution from Roof Top Solar, 1MW solar and Mini Hydro plants

For Current Month

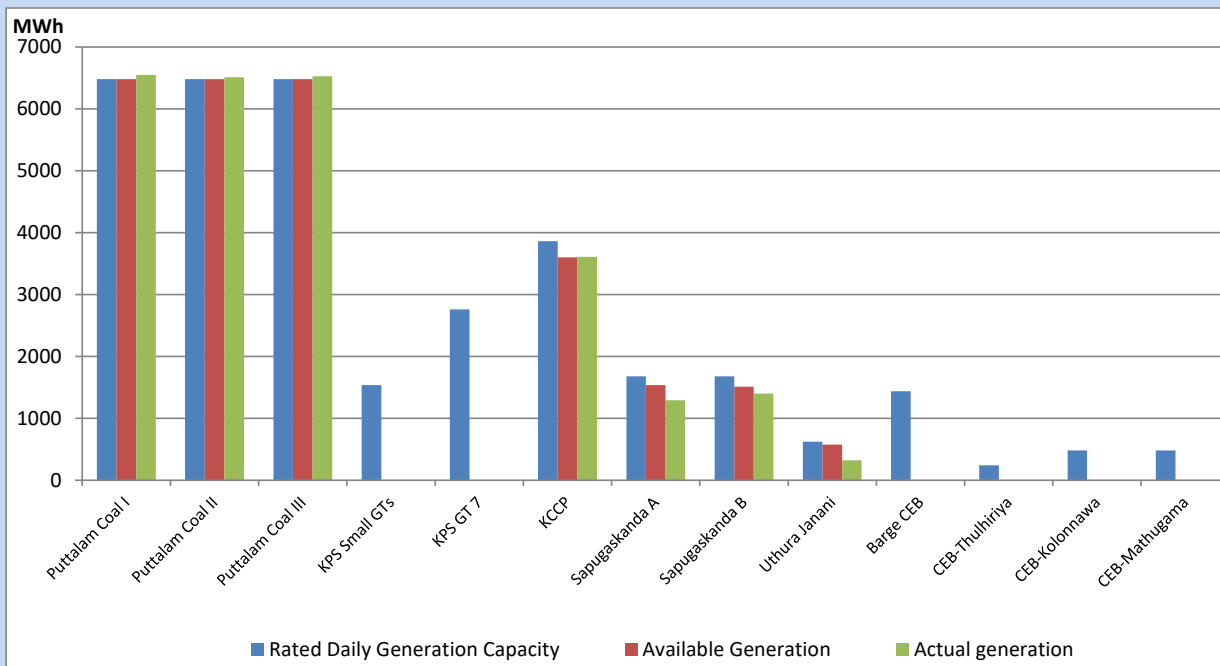
Category	Dispatch (GWh)	Percentage
CEB Hydro	45.92	21.34%
CEB Thermal Oil	27.79	12.91%
CEB Coal	97.83	45.46%
IPP Thermal	29.92	13.90%
SPP Wind	3.71	1.72%
CEB Wind	5.15	2.39%
SPP Solar	0.99	0.46%
SPP Solid Waste	1.15	0.53%
Mini Hydro	2.74	1.27%
Total	215.20	

For Current Year

Category	Dispatch (GWh)	Percentage
CEB Hydro	723.7	26.05%
CEB Thermal Oil	440.0	15.84%
CEB Coal	1,041.4	37.48%
IPP Thermal	421.3	15.16%
SPP Wind	31.8	1.15%
CEB Wind	39.4	1.42%
SPP Solar	16.3	0.59%
SPP Solid Waste	12.3	0.44%
Mini Hydro	52.4	1.89%
Total	2,778.4	

CEB owned Thermal Plant Dispatch

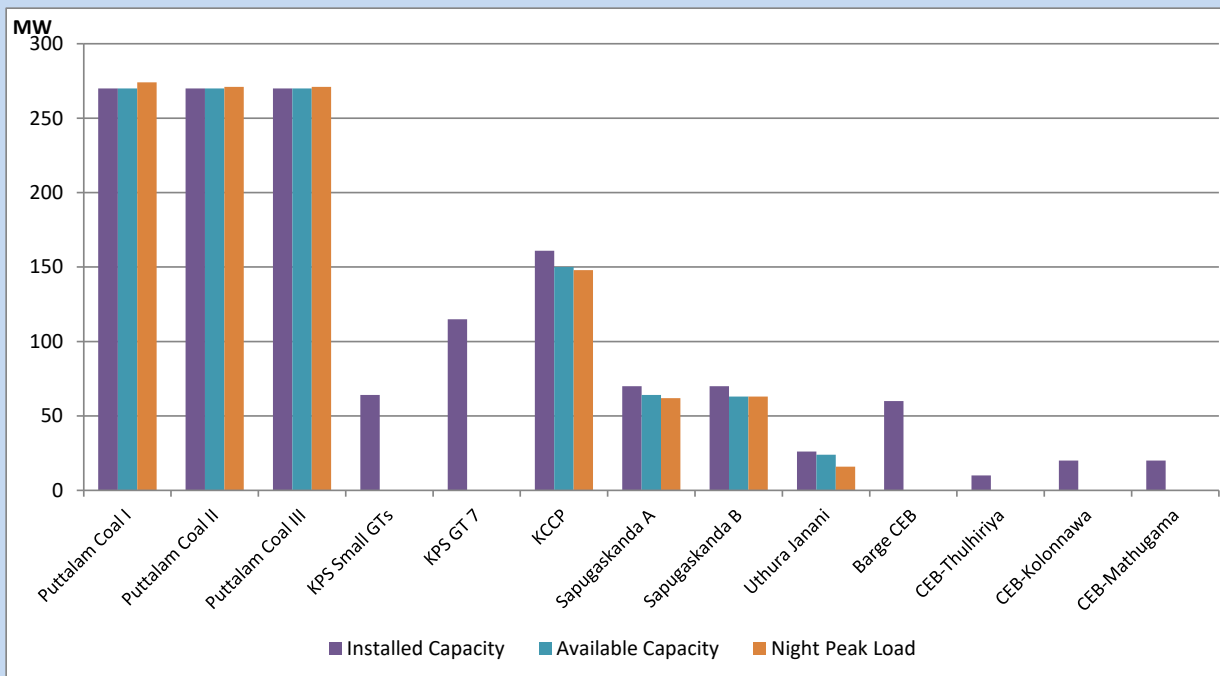
March 5, 2022



Available Generation is estimated based on plant availability at 6.00am on

March 6, 2022

CEB owned Thermal Plant Loading at the Night Peak



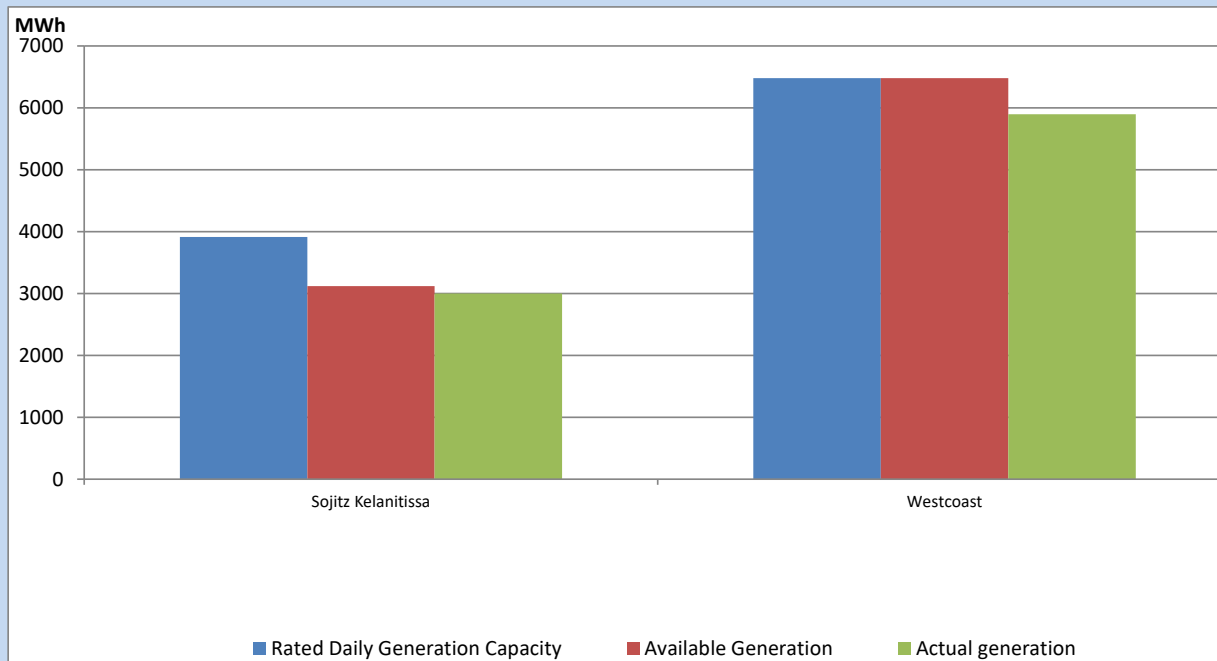
Note- Plant availability is recorded at 6.00 am on

March 6, 2022

IPP owned Thermal Plant Dispatch

March 5, 2022

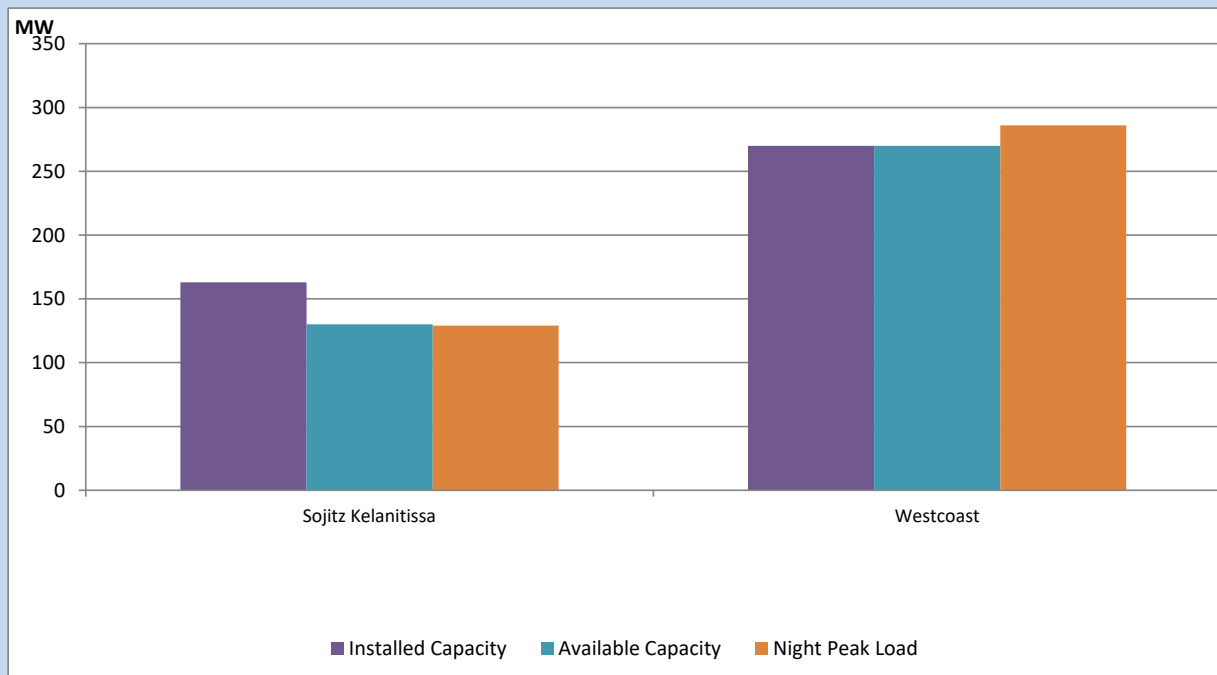
ACE Embilipitiya, ACE Matara, Asia Power, V Power Pallekale, Vpower Galle, V Power Horana, Vpower Hambantota, Vpower Valachchena and Altaqa Mahiyanganaya are not available due to expiration of PPAs



Available Generation is estimated based on plant availability at 6.00am on

March 6, 2022

IPP owned Thermal Plant Loading at the Night Peak

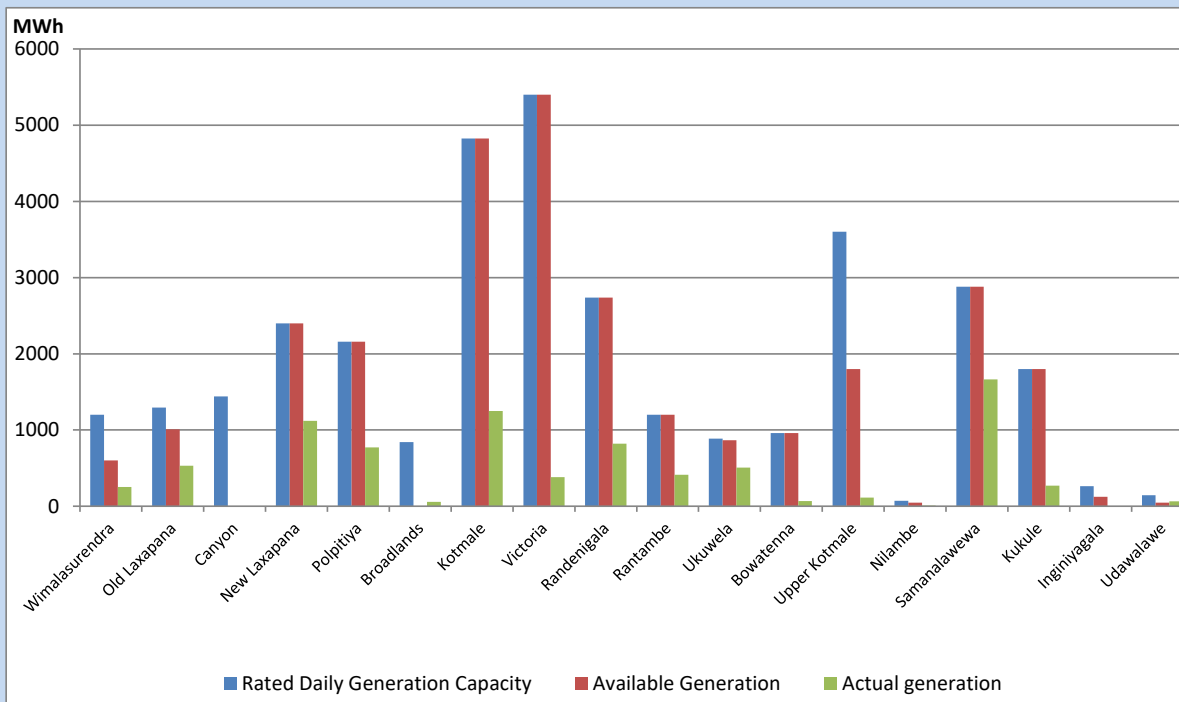


Note- Plant availability is recorded at 6.00 am on

March 6, 2022

Major Hydro Plant Dispatch

March 5, 2022

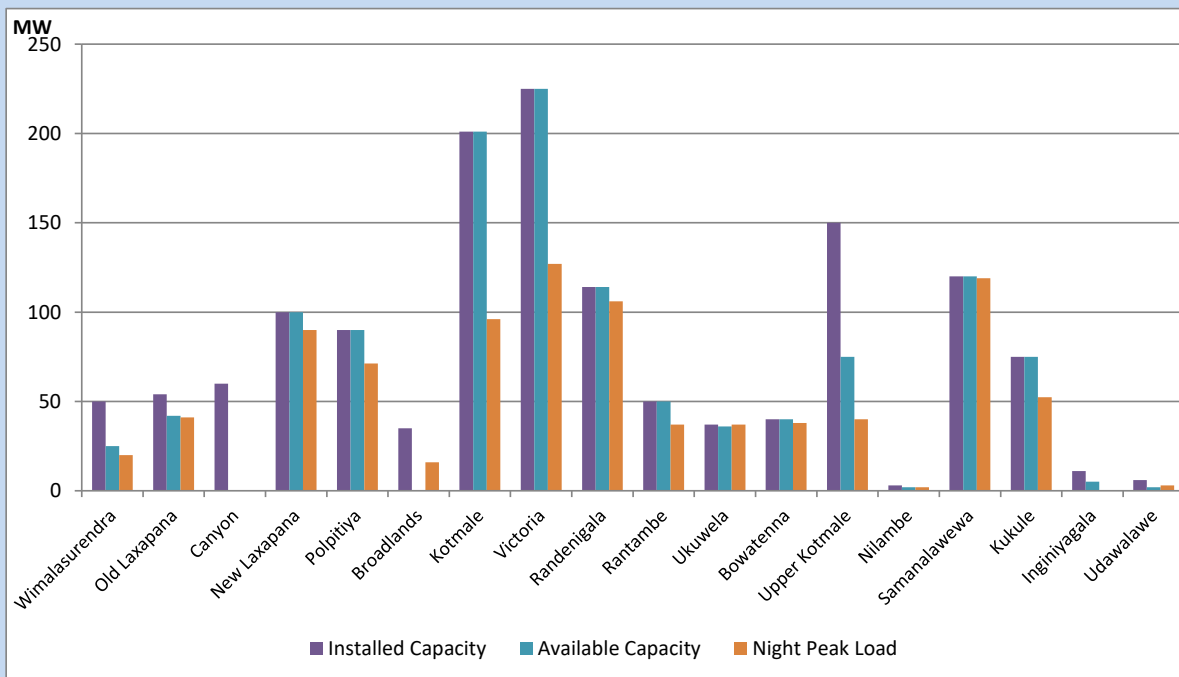


Available Generation is estimated based on plant availability at 6.00am on
Broadlands power plant is operating in the Commissioning Stage

March 6, 2022

Major Hydro Plant Loading at Night Peak

March 5, 2022



Note- Plant availability is recorded at 6.00 am on
Broadlands power plant is operating in the Commissioning Stage

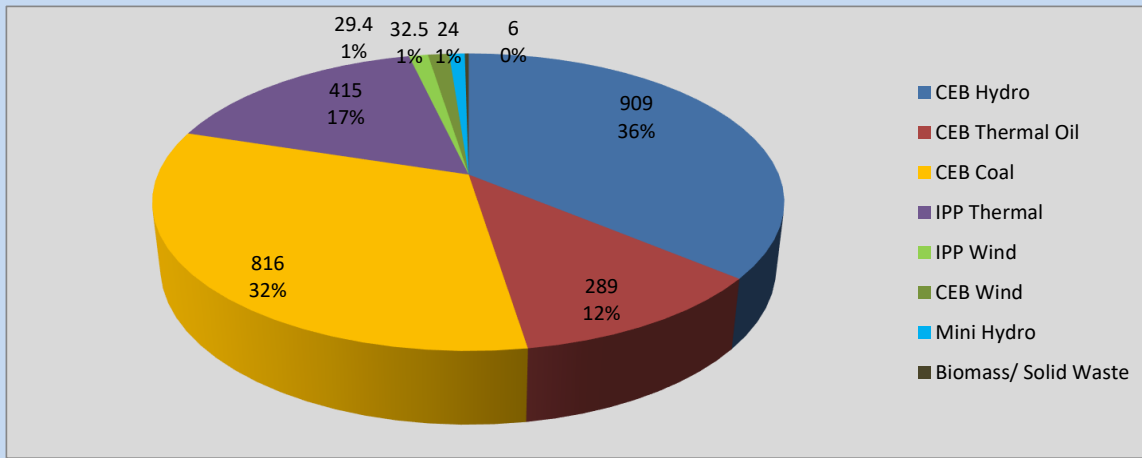
March 6, 2022

Summary of Major Plant performance

Plant	Installed Capacity	Plant Availability	Night peak Load	Plant Dispatch
	(MW)	(MW)	(MW)	(MWh)
Wimalasurendra	50	25	20	254
Old Laxapana	54	42	41	531
Canyon	60	0	0	0
New Laxapana	100	100	90	1,121
Polpitiya	90	90	71	773
Broadlands	35	0	16	56
Kotmale	201	201	96	1,250
Victoria	225	225	127	380
Randenigala	114	114	106	819
Rantambe	50	50	37	414
Ukuwela	37	36	37	507
Bowatenna	40	40	38	67
Upper Kotmale	150	75	40	112
Nilambe	3	2	2	7
Samanalawewa	120	120	119	1,665
Kukule	75	75	52	269
Inginiyagala	11	5	0	0
Udawalawe	6	2	3	65
Puttalam Coal I	270	270	274	6,550
Puttalam Coal II	270	270	271	6,513
Puttalam Coal III	270	270	271	6,530
KPS Small GTs	64	0	0	0
KPS GT 7	115	0	0	0
KCCP	161	150	148	3,610
Sapugaskanda A	70	64	62	1,293
Sapugaskanda B	70	63	63	1,401
Uthura Janani	26	24	16	321
Barge CEB	60	0	0	0
CEB-Thulhiriya	10	0	0	0
CEB-Kolonnawa	20	0	0	0
CEB-Mathugama	20	0	0	0
Sojitz Kelanitissa	163	130	129	3,000
West Coast	270	270	286	5,898
Total	3,280	2,713	2,508	45,670

Plant availability is the availability recorded at 6 am on

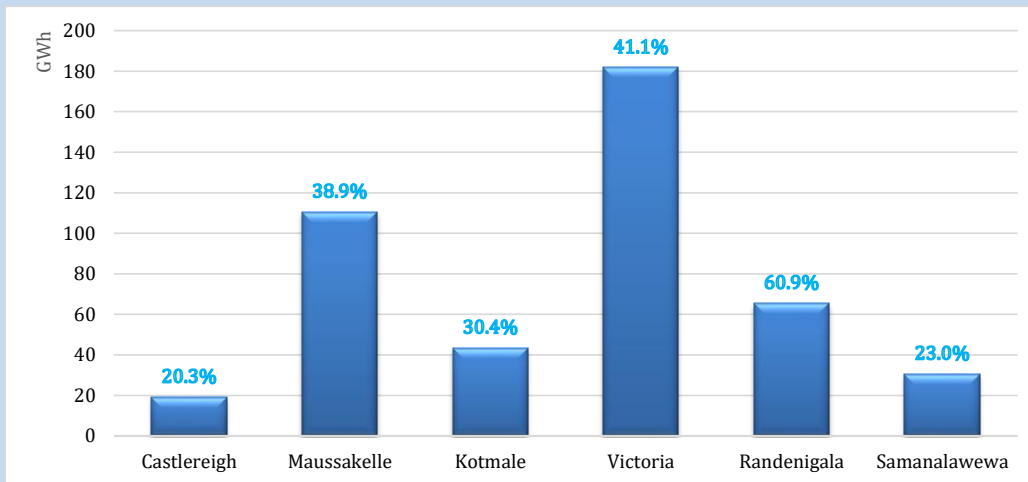
March 6, 2022



Night Peak* 2,520.5 MW
 Day Peak 1,990.1 MW
 Minimum Demand 1,468.5 MW

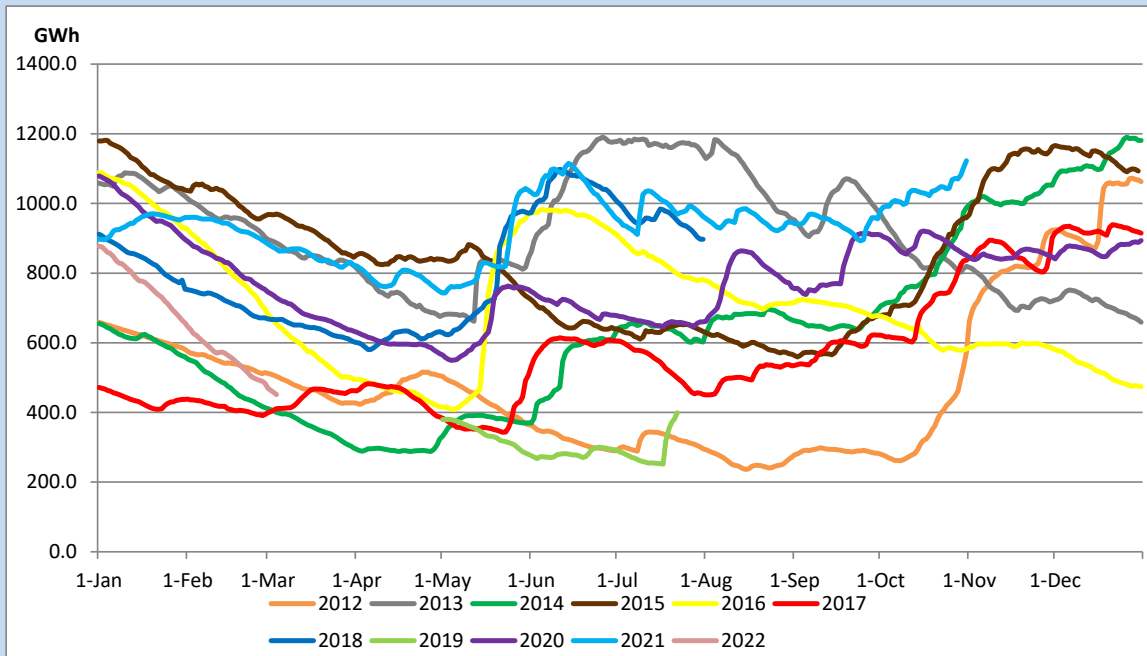
Above figures are excluding contribution from Roof Top Solar, 1MW solar, certain Wind plants and Mini Hydro plants

Reservoir Levels - as at 06.00 Hr on March 6, 2022



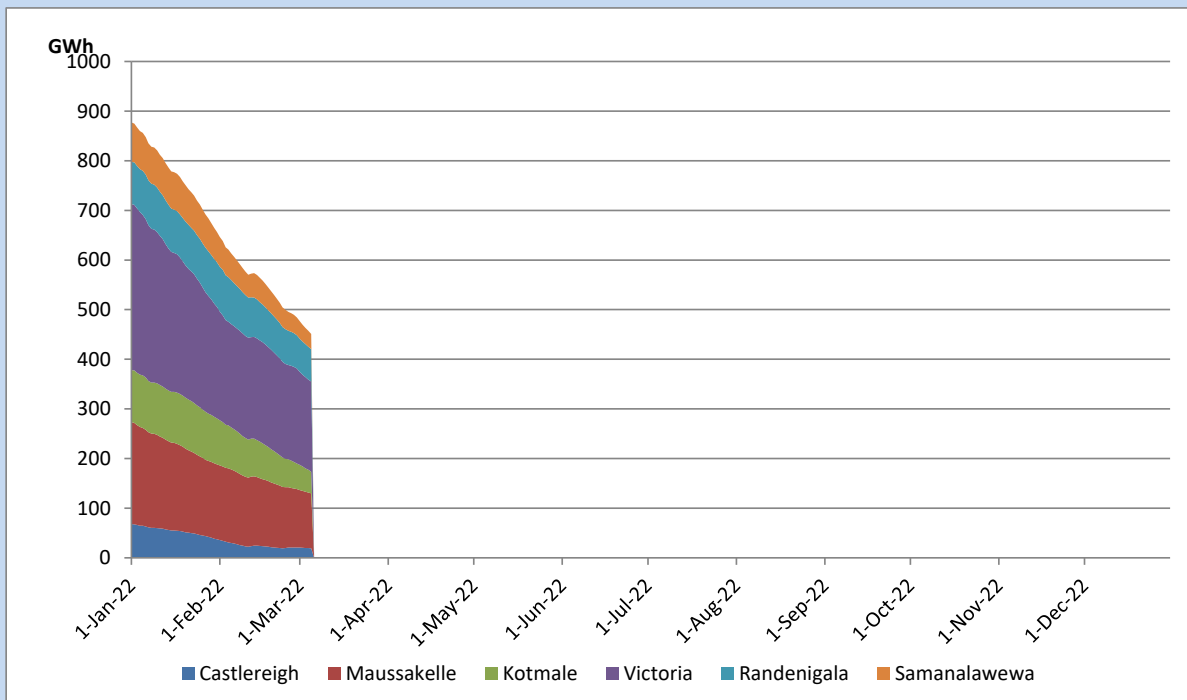
Total Reservoir Level 451.2 GWh
 % of Total capacity 35.8%

Comparison of Total Reservoir Storage Levels with Past Years

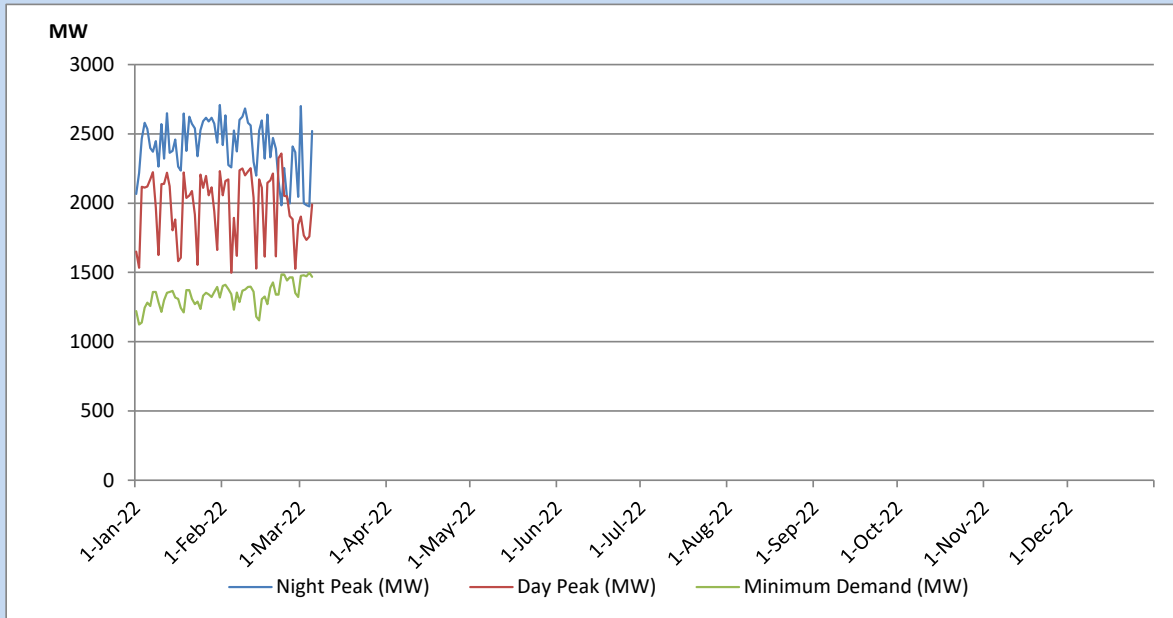


Data for 2018 and 2019 are only available for part of year.

Variation of Major Hydro Reservoir Levels in the current year (GWh)



Variation of Demand during the current year

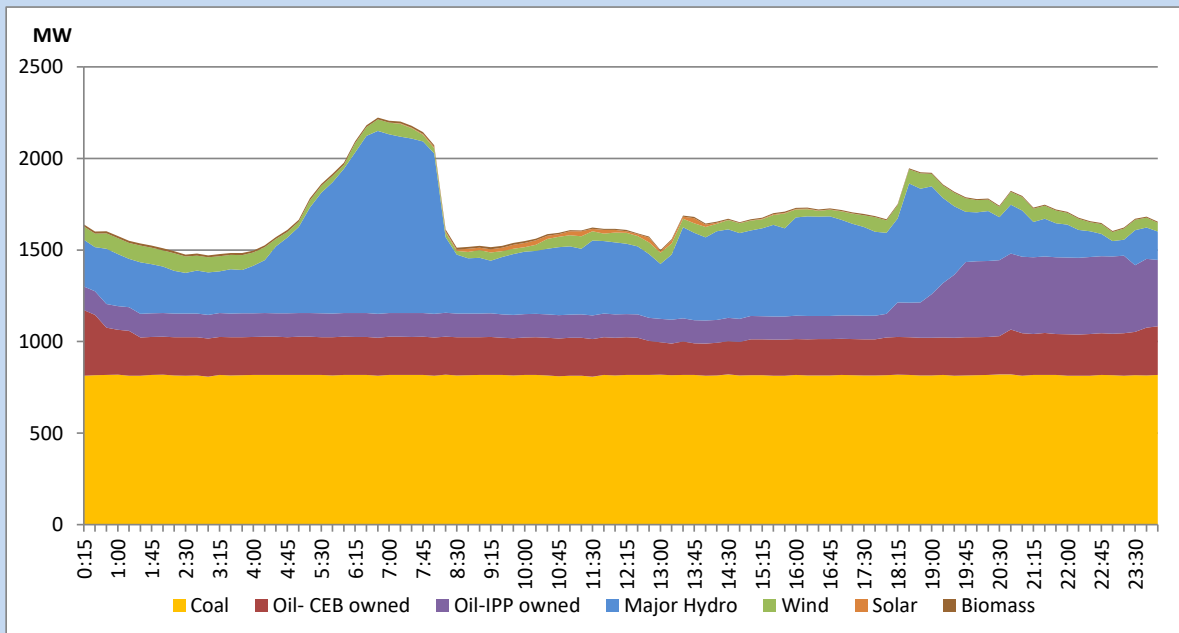


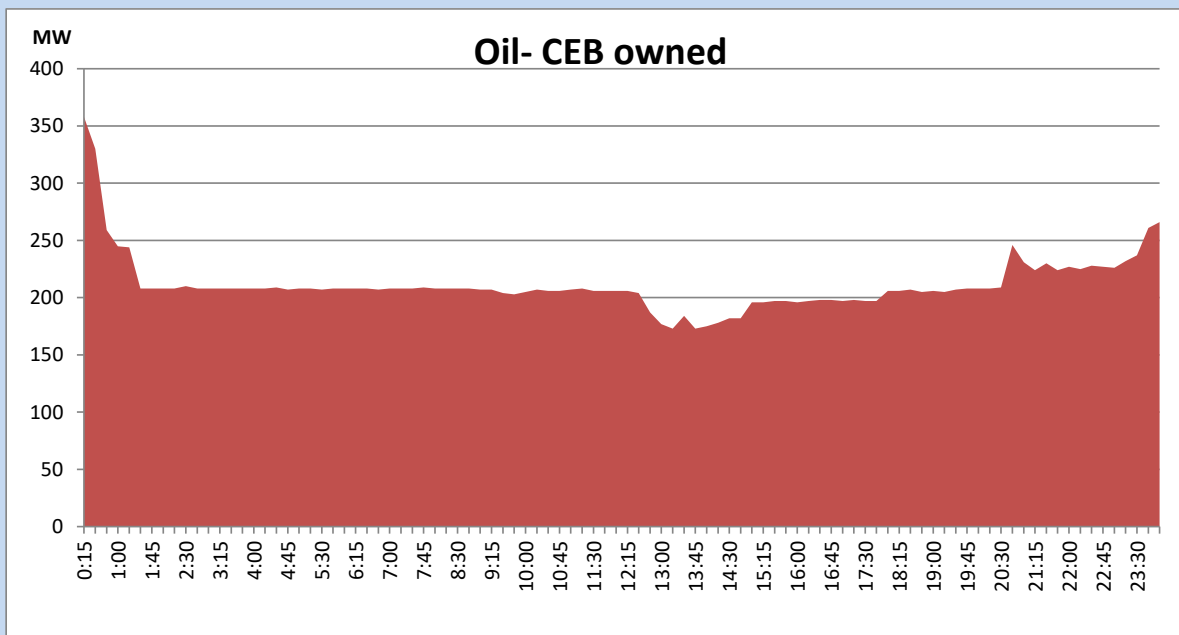
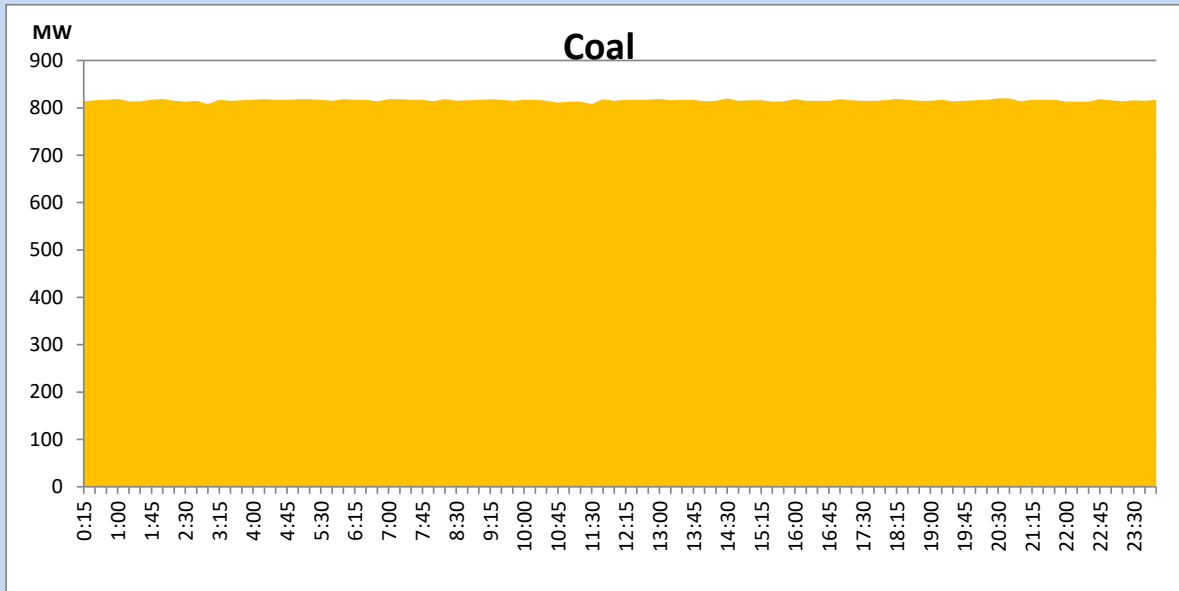
The above figures are excluding contribution from Roof Top Solar, 1MW solar, certain Wind plants and Mini Hydro plants

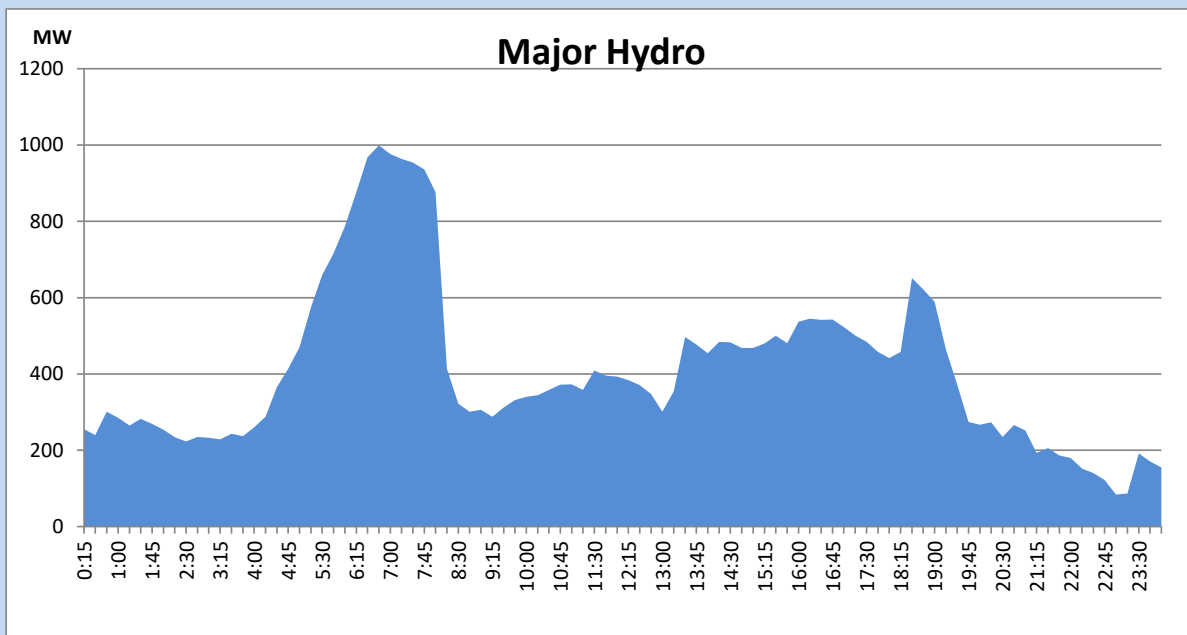
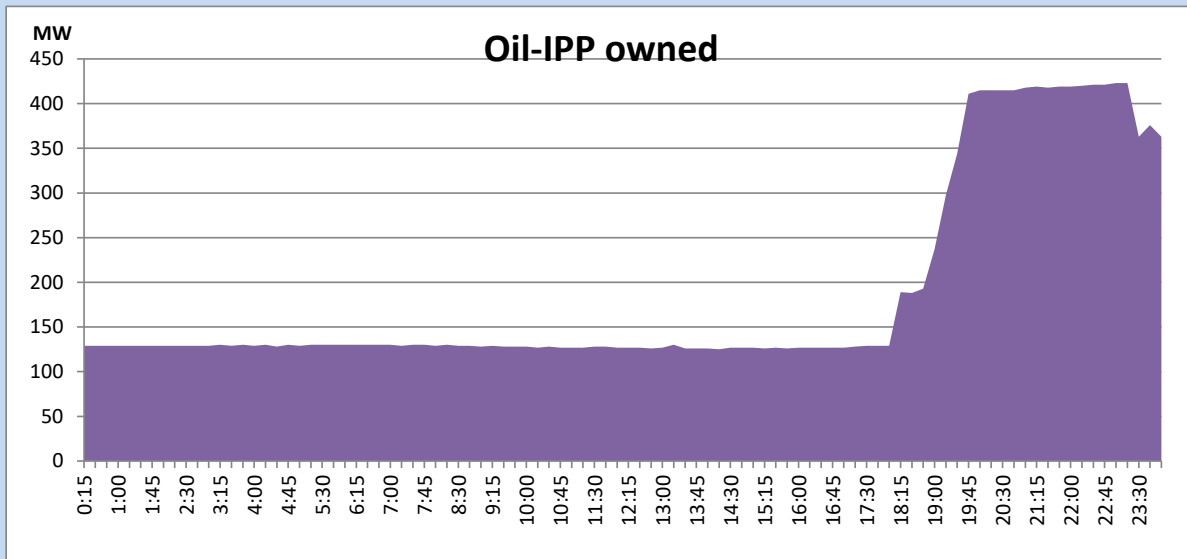
Daily Load Curve of the Previous day

March 4, 2022

Solar and wind data is based on Telemetered Power Stations only



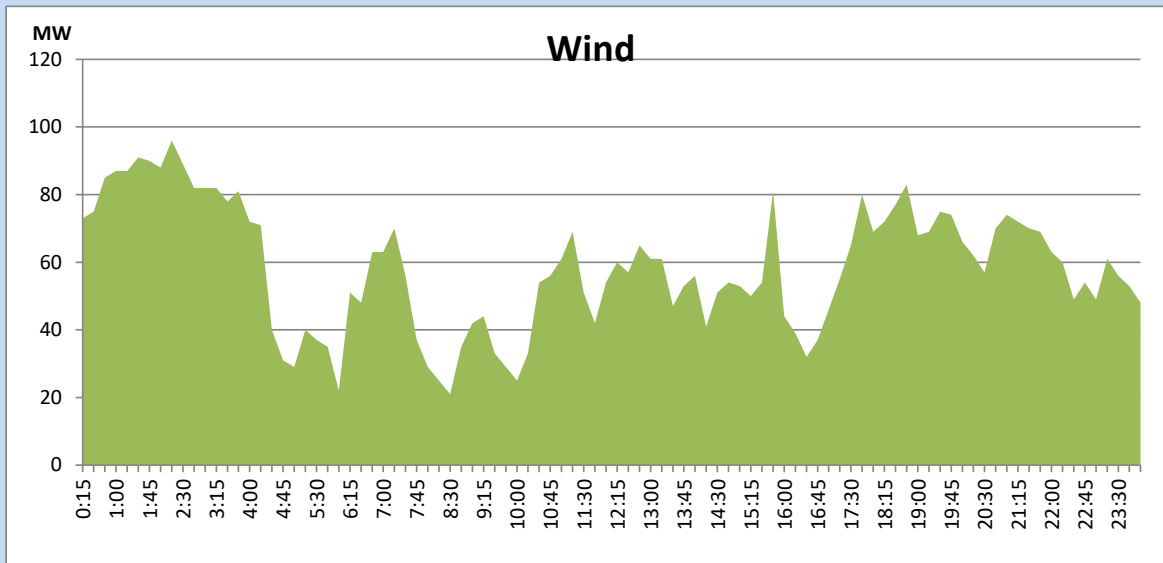




Wind Generation during the Previous day

March 4, 2022

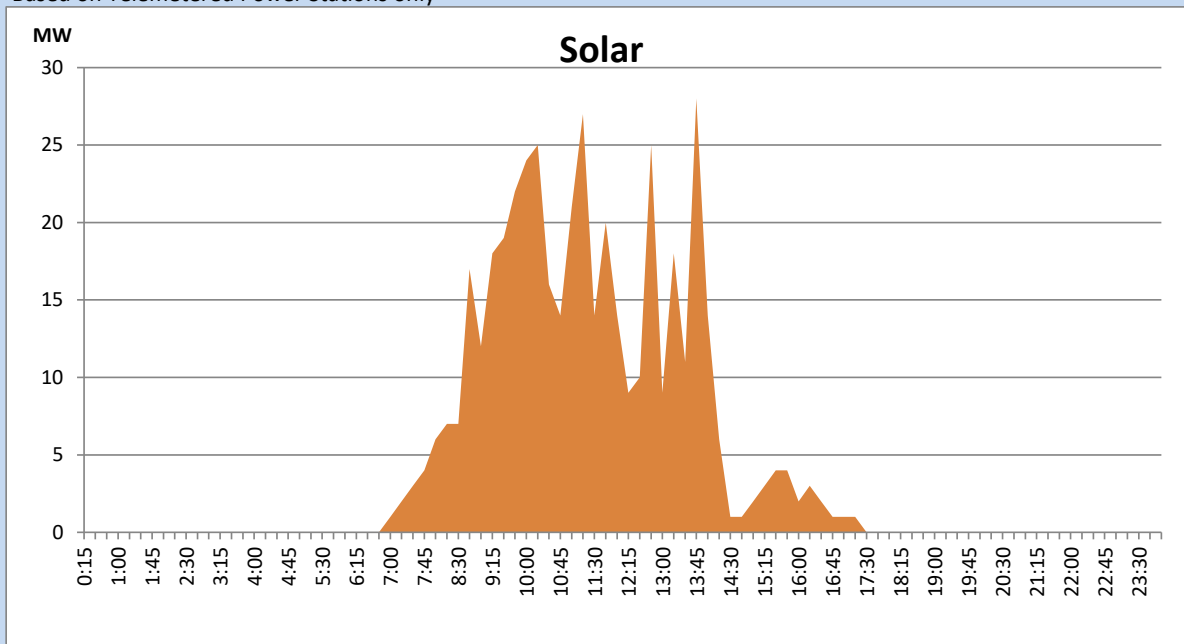
Based on Telemetered Power Stations only



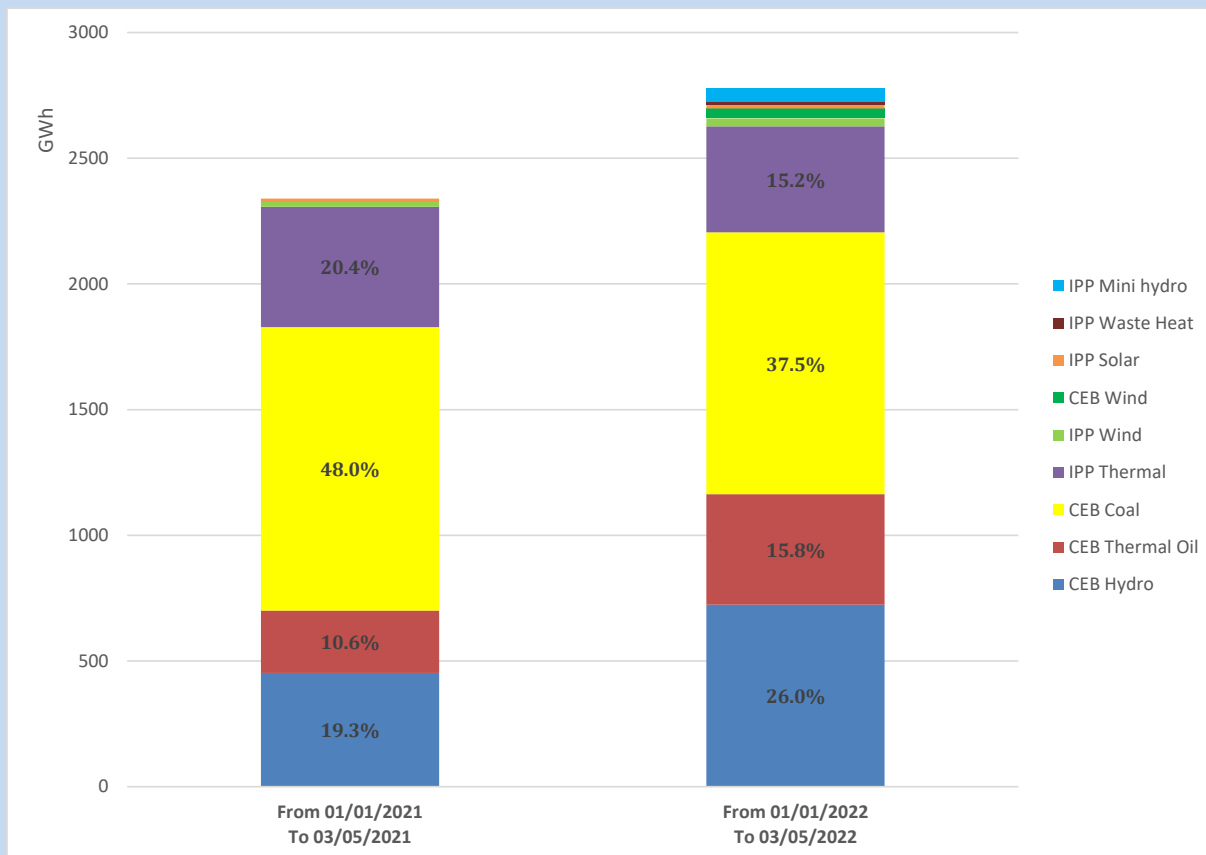
Solar Generation during the Previous day

March 4, 2022

Based on Telemetered Power Stations only



Cumulative Dispatch Comparison with Last Year



Thermal Plant Fuel types

Power Station	Primary Fuel
CEB Thermal	
Sapugaskanda 1	Heavy Fuel
Sapugaskanda 2	Heavy Fuel
Kelanitissa Small Gas Turbines	Auto Diesel
GT 7 - Kelanitissa	Auto Diesel
Kelanitissa CCY	Naphtha & Diesel
Lakvijaya 1	Coal
Lakvijaya 2	Coal
Lakvijaya 3	Coal
Uthuru Janani	Heavy Fuel
Barge CEB	Heavy Fuel

Power Station	Primary Fuel
Private Thermal	
Sojitz - Kelanitissa	Auto Diesel
West Coast	Auto Diesel

Major Incidents during the day -as reported by CEB morning of

March 6, 2022

1) O'Lax - WPS GSS 132kV cct 02 tripped from O'Lax end at 14:40hrs due to operation of inverse E/F protection.
O'Lax - WPS GSS cct 02 restored at 16:39hrs.

2) KCCP performed a forced shutdown at 01:36hrs (06/03/2022) due to lack of fuel.

Jagath Jayaranga

System Control Engineer

(1) - Excluding energy contribution from Roof Top Solar, 1MW solar, certain Mini Hydro plants and Biomass plants

(2) - Excluding contribution from Roof Top Solar, 1MW solar, certain Wind plants, Mini Hydro plants and Biomass plants

(3) - Including data from 26 number of telemetered mini hydro plants (MHP) having total Installed Capacity of 129MW.

(4) - Randenigala MOL has been revised to 209 masl from 199.5 masl and Samanalawewa Spill level has been revised to 455 masl from 460 masl with effect from 01 st Feb. 2018 considering reservoir operation restrictions.

(5)- Percentage of the total capacity of Vict and Koth storage is calculated by considering downstream reservoir storage

System Control Centre-Transmission Division