

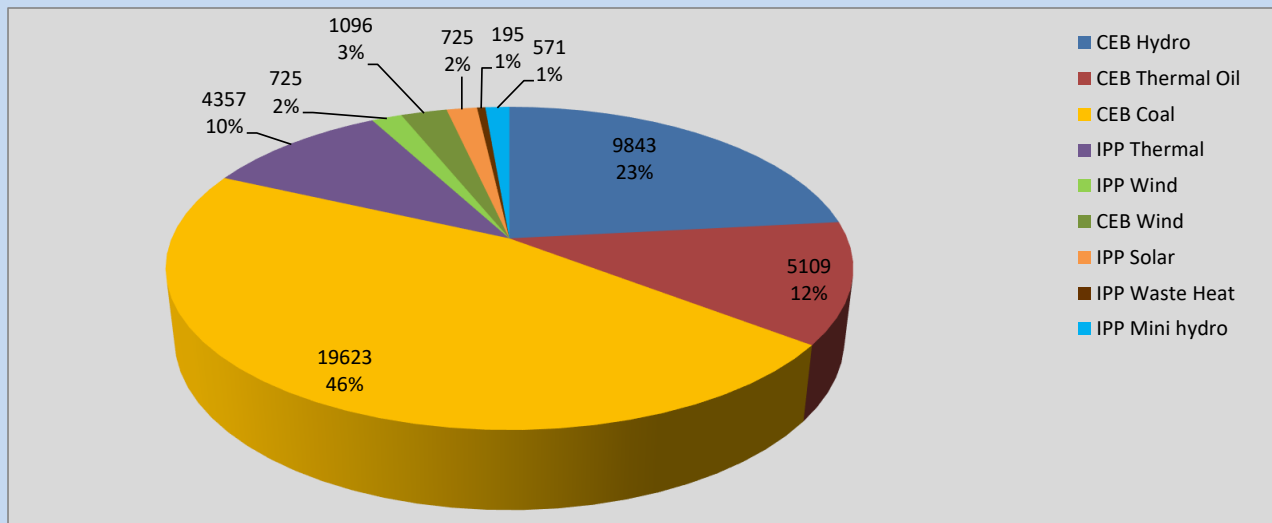
# Generation and Reservoirs Statistics

March 4, 2022



PUBLIC UTILITIES COMMISSION OF SRI LANKA

## Daily Generation Mix in MWh



**Total Generation** **41,652 MWh**

Note: Above data is excluding contribution from Roof Top Solar, 1MW Solar and certain Mini Hydro plants

## Cumulative Dispatch

Note: Following data is Excluding contribution from Roof Top Solar, 1MW solar and Mini Hydro plants

### For Current Month

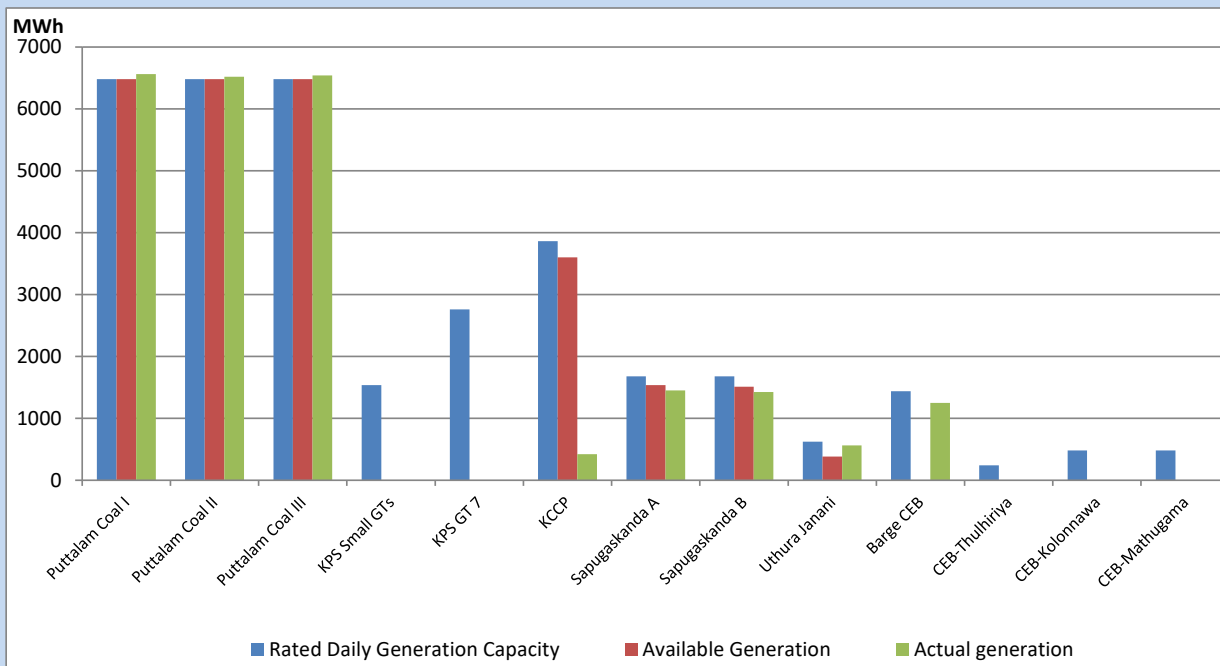
Category	Dispatch (GWh)	Percentage
CEB Hydro	37.63	22.20%
CEB Thermal Oil	21.17	12.49%
CEB Coal	78.24	46.15%
IPP Thermal	21.02	12.40%
SPP Wind	3.03	1.79%
CEB Wind	4.54	2.68%
SPP Solar	0.69	0.41%
SPP Solid Waste	1.01	0.60%
Mini Hydro	2.20	1.30%
<b>Total</b>	<b>169.53</b>	

### For Current Year

Category	Dispatch (GWh)	Percentage
CEB Hydro	715.5	26.18%
CEB Thermal Oil	433.4	15.86%
CEB Coal	1,021.8	37.39%
IPP Thermal	412.4	15.09%
SPP Wind	31.2	1.14%
CEB Wind	38.8	1.42%
SPP Solar	16.0	0.59%
SPP Solid Waste	12.1	0.44%
Mini Hydro	51.9	1.90%
<b>Total</b>	<b>2,732.8</b>	

## CEB owned Thermal Plant Dispatch

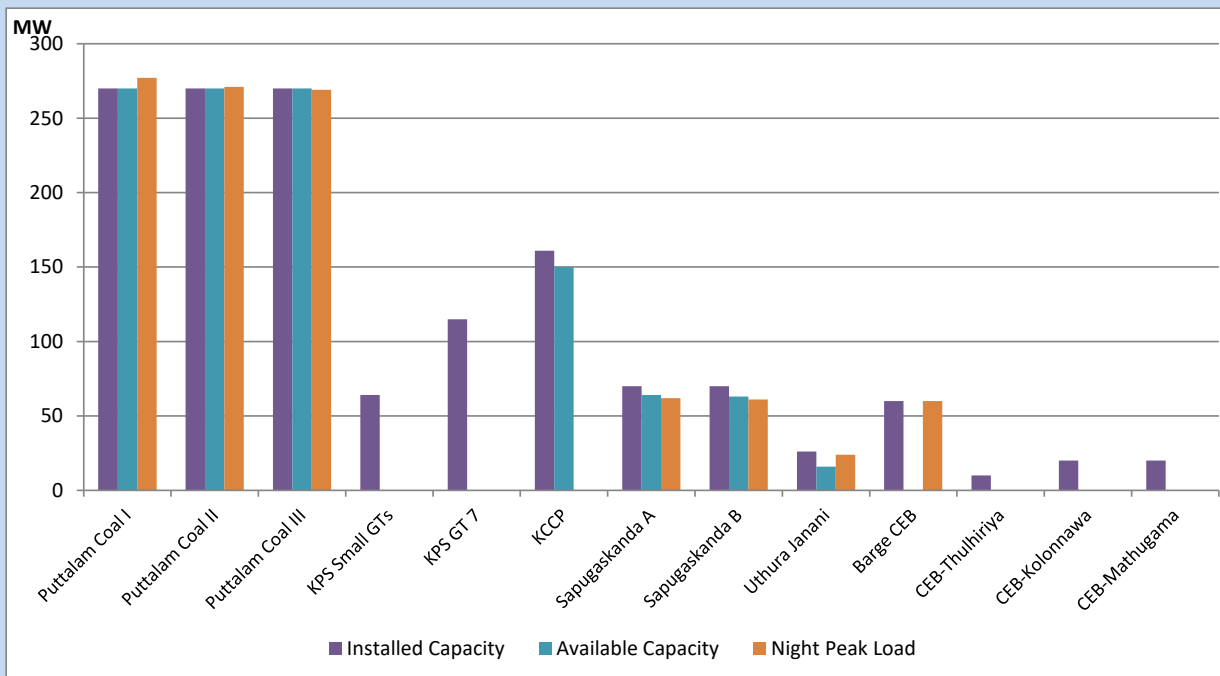
March 4, 2022



Available Generation is estimated based on plant availability at 6.00am on

March 5, 2022

## CEB owned Thermal Plant Loading at the Night Peak



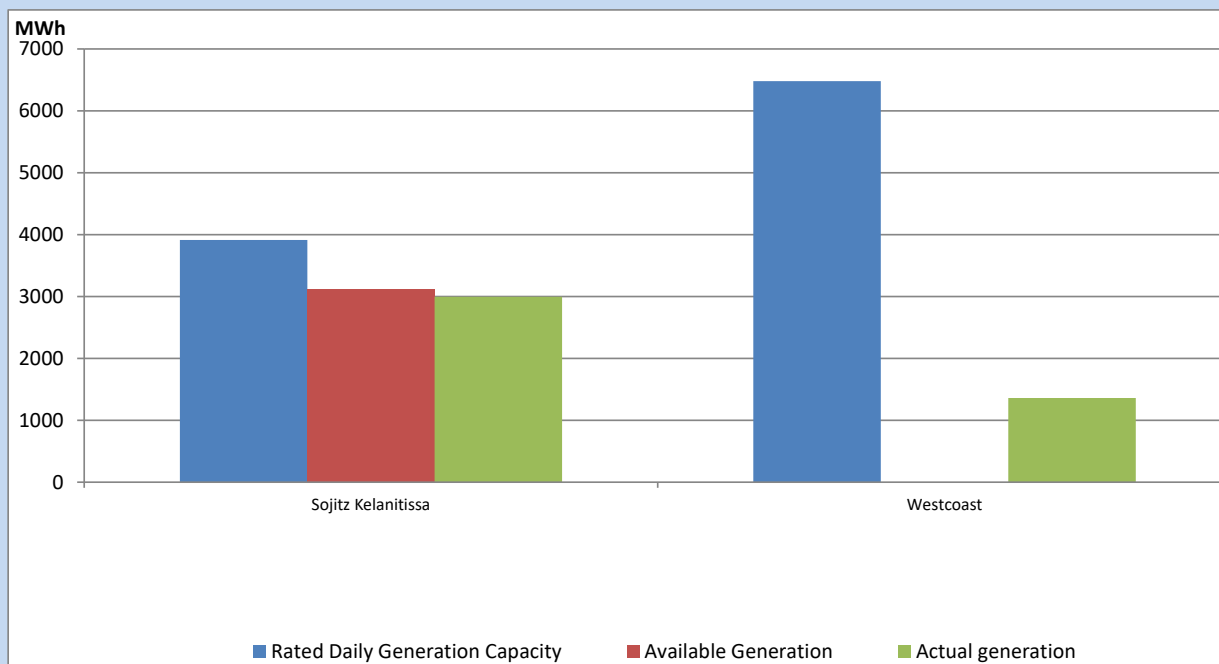
Note- Plant availability is recorded at 6.00 am on

March 5, 2022

## IPP owned Thermal Plant Dispatch

March 4, 2022

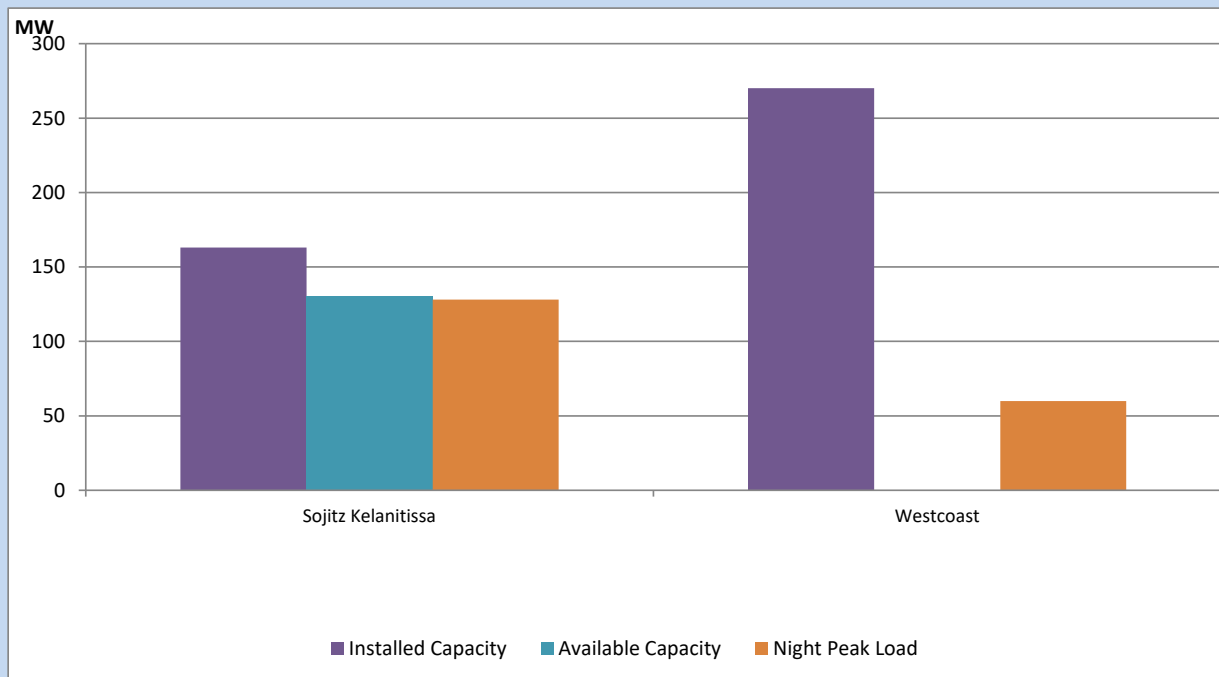
ACE Embilipitiya, ACE Matara, Asia Power, V Power Pallekale, Vpower Galle, V Power Horana, Vpower Hambantota, Vpower Valachchena and Altaqa Mahiyanganaya are not available due to expiration of PPAs



Available Generation is estimated based on plant availability at 6.00am on

March 5, 2022

## IPP owned Thermal Plant Loading at the Night Peak

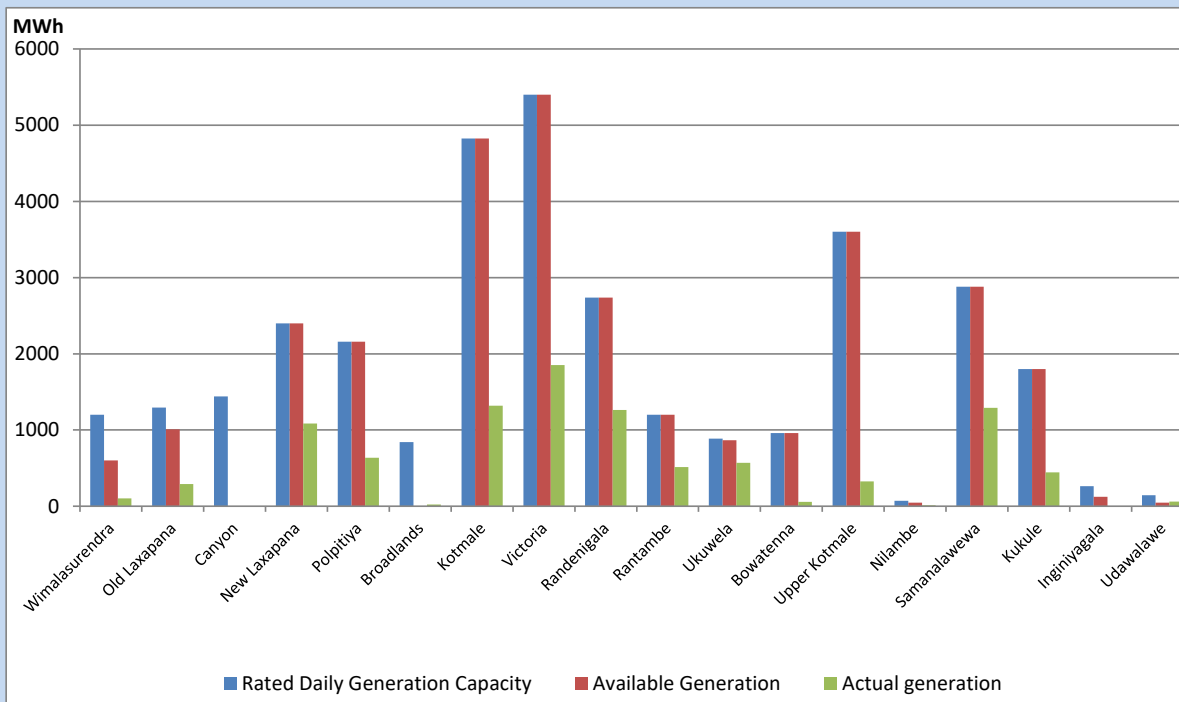


Note- Plant availability is recorded at 6.00 am on

March 5, 2022

## Major Hydro Plant Dispatch

March 4, 2022

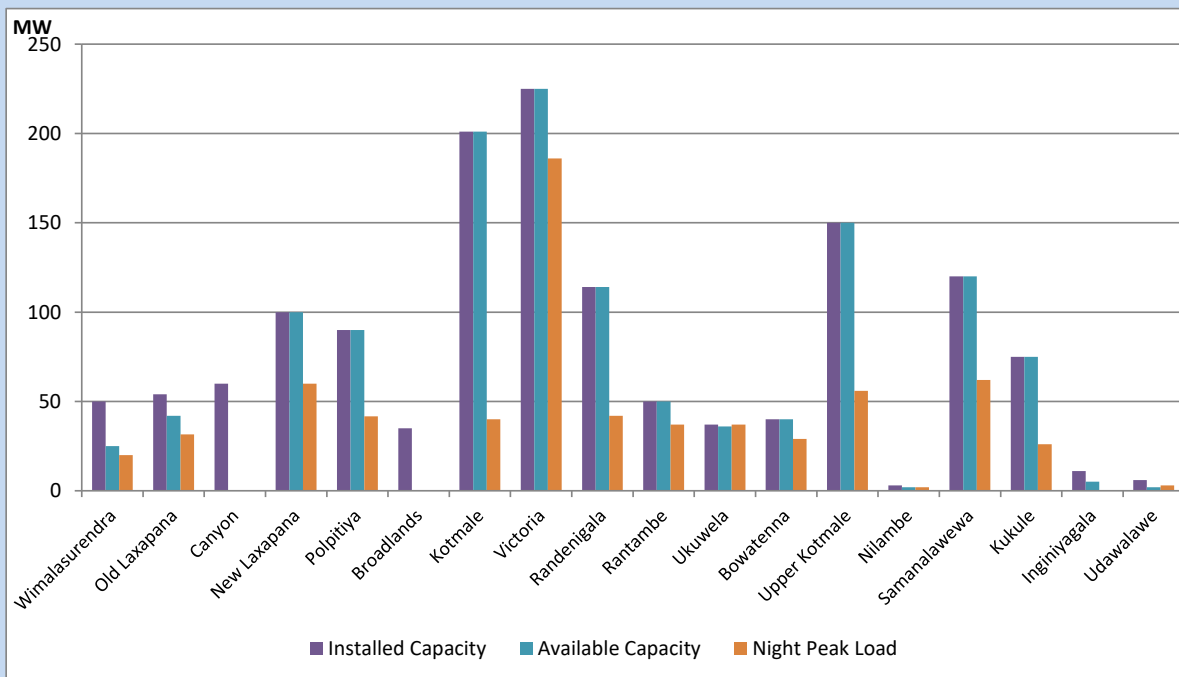


Available Generation is estimated based on plant availability at 6.00am on  
Broadlands power plant is operating in the Commissioning Stage

March 5, 2022

## Major Hydro Plant Loading at Night Peak

March 4, 2022



Note- Plant availability is recorded at 6.00 am on  
Broadlands power plant is operating in the Commissioning Stage

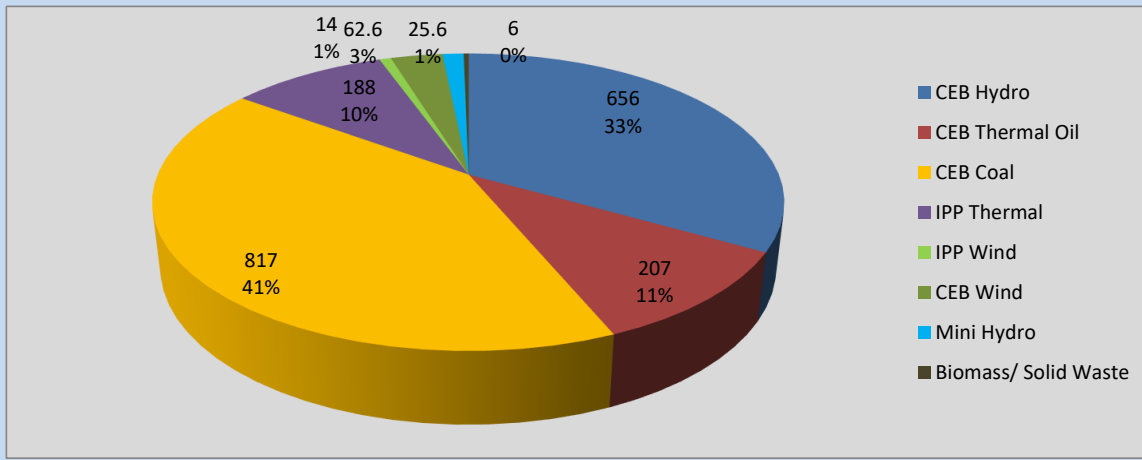
March 5, 2022

## Summary of Major Plant performance

Plant	Installed Capacity	Plant Availability	Night peak Load	Plant Dispatch
	(MW)	(MW)	(MW)	(MWh)
Wimalasurendra	50	25	20	103
Old Laxapana	54	42	32	289
Canyon	60	0	0	0
New Laxapana	100	100	60	1,084
Polpitiya	90	90	42	634
Broadlands	35	0	0	23
Kotmale	201	201	40	1,320
Victoria	225	225	186	1,851
Randenigala	114	114	42	1,262
Rantambe	50	50	37	515
Ukuwela	37	36	37	570
Bowatenna	40	40	29	58
Upper Kotmale	150	150	56	327
Nilambe	3	2	2	11
Samanalawewa	120	120	62	1,292
Kukule	75	75	26	443
Inginiyagala	11	5	0	0
Udawalawe	6	2	3	61
Puttalam Coal I	270	270	277	6,565
Puttalam Coal II	270	270	271	6,518
Puttalam Coal III	270	270	269	6,540
KPS Small GTs	64	0	0	0
KPS GT 7	115	0	0	0
KCCP	161	150	0	420
Sapugaskanda A	70	64	62	1,452
Sapugaskanda B	70	63	61	1,425
Uthura Janani	26	16	24	562
Barge CEB	60	0	60	1,250
CEB-Thulhiriya	10	0	0	0
CEB-Kolonnawa	20	0	0	0
CEB-Mathugama	20	0	0	0
Sojitz Kelanitissa	163	130	128	2,996
West Coast	270	0	60	1,361
<b>Total</b>	<b>3,280</b>	<b>2,510</b>	<b>1,994</b>	<b>41,652</b>

Plant availability is the availability recorded at 6 am on

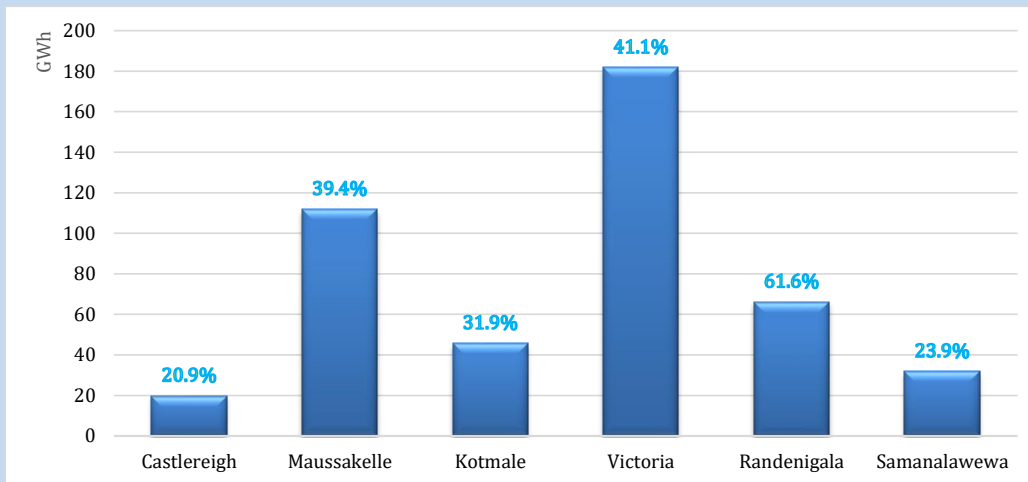
March 5, 2022



Night Peak\* 1,976.5 MW  
 Day Peak 1,759.6 MW  
 Minimum Demand 1,498.0 MW

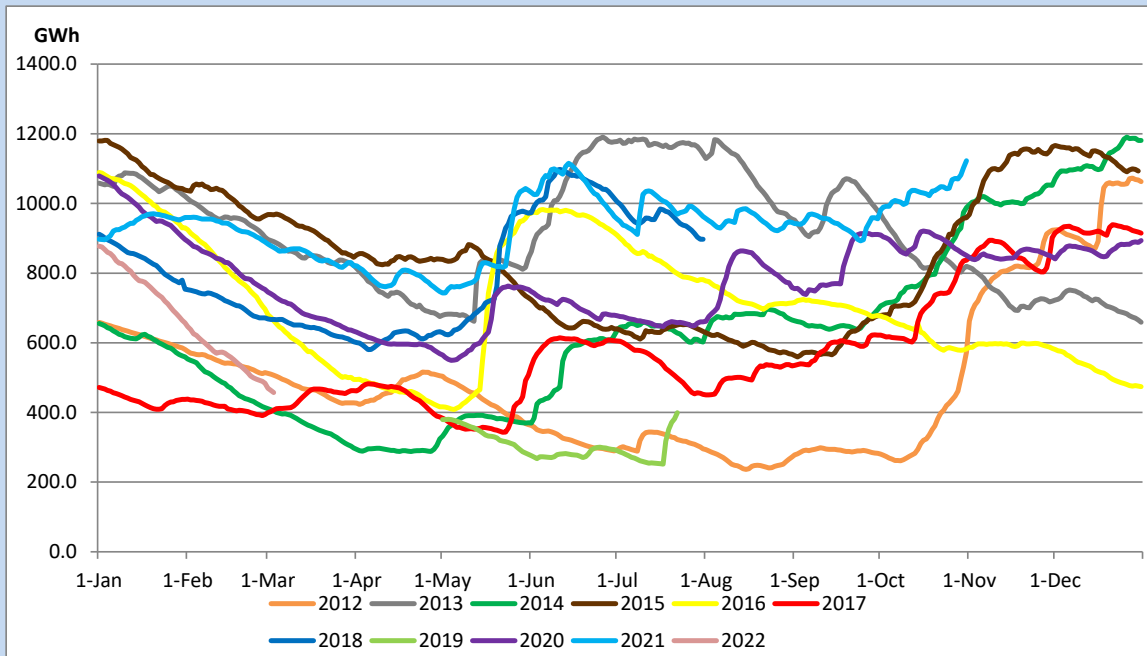
Above figures are excluding contribution from Roof Top Solar, 1MW solar, certain Wind plants and Mini Hydro plants

Reservoir Levels - as at 06.00 Hr on March 5, 2022



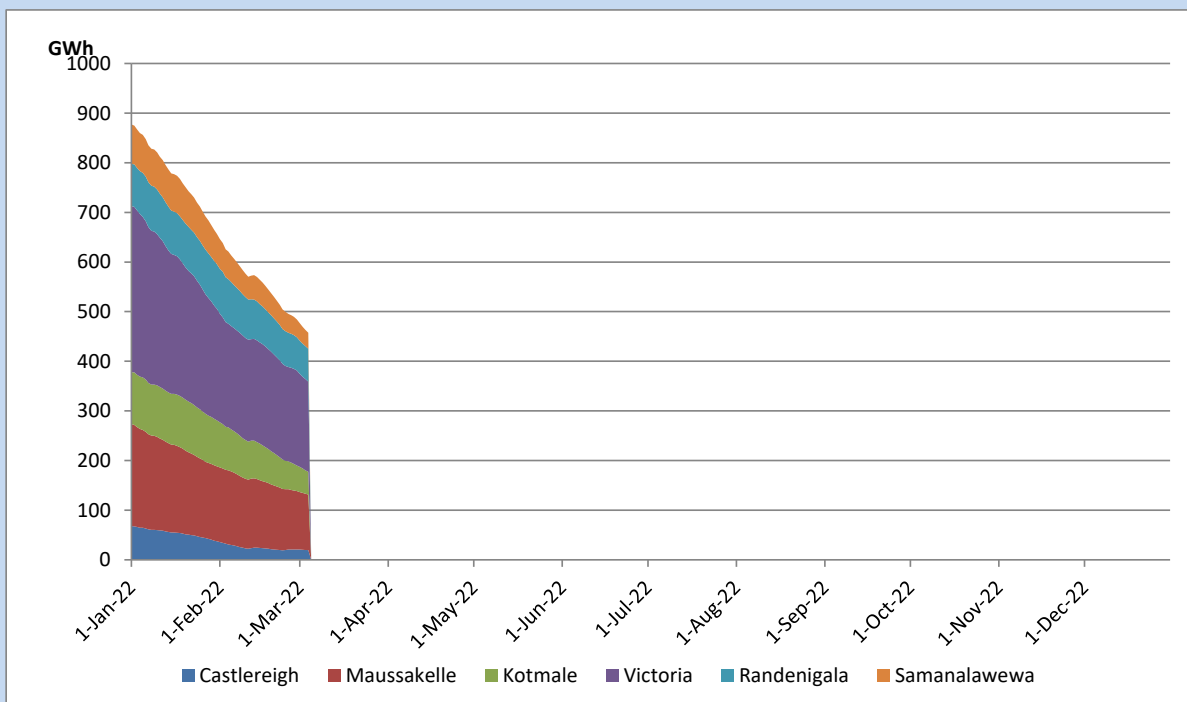
Total Reservoir Level 457.2 GWh  
 % of Total capacity 36.5%

## Comparison of Total Reservoir Storage Levels with Past Years



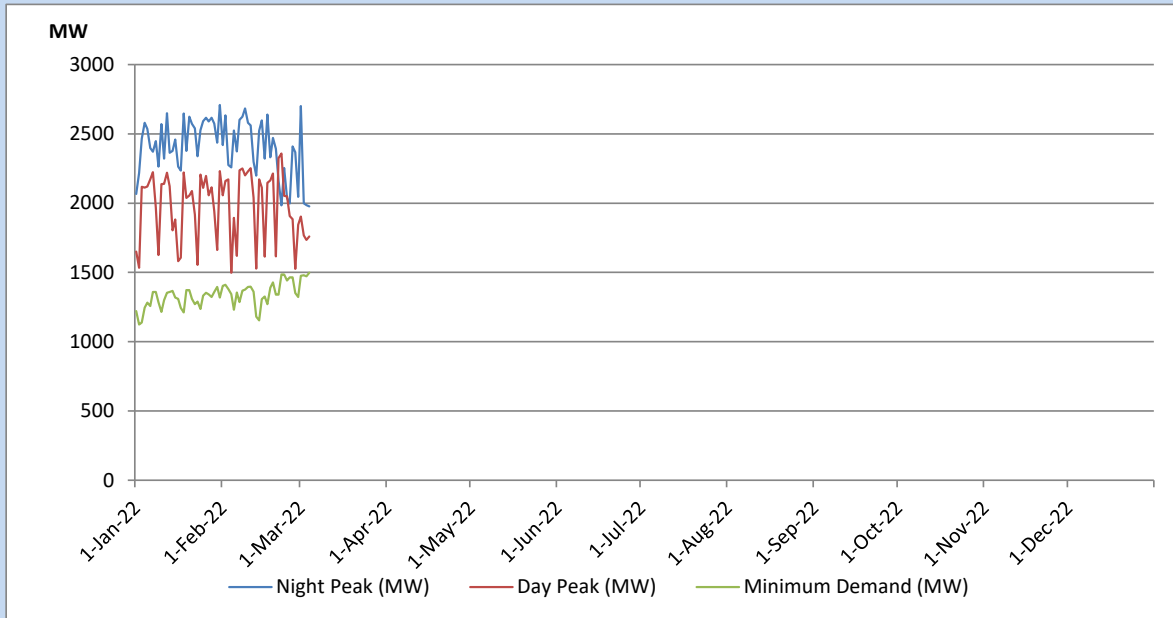
Data for 2018 and 2019 are only available for part of year.

## Variation of Major Hydro Reservoir Levels in the current year (GWh)





## Variation of Demand during the current year

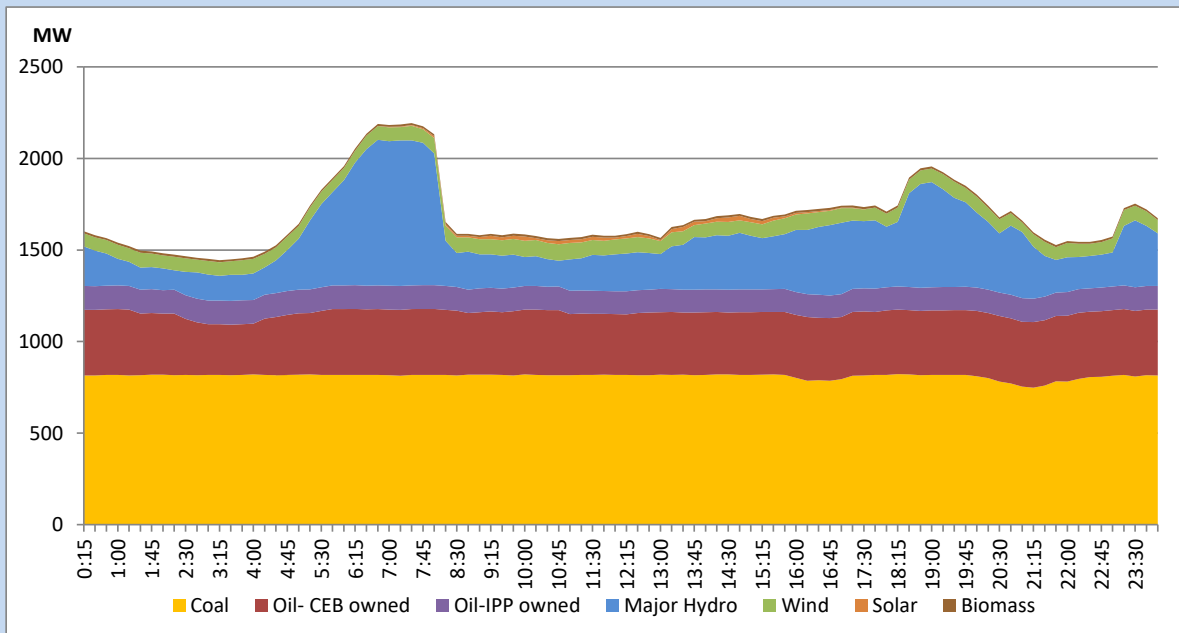


The above figures are excluding contribution from Roof Top Solar, 1MW solar, certain Wind plants and Mini Hydro plants

## Daily Load Curve of the Previous day

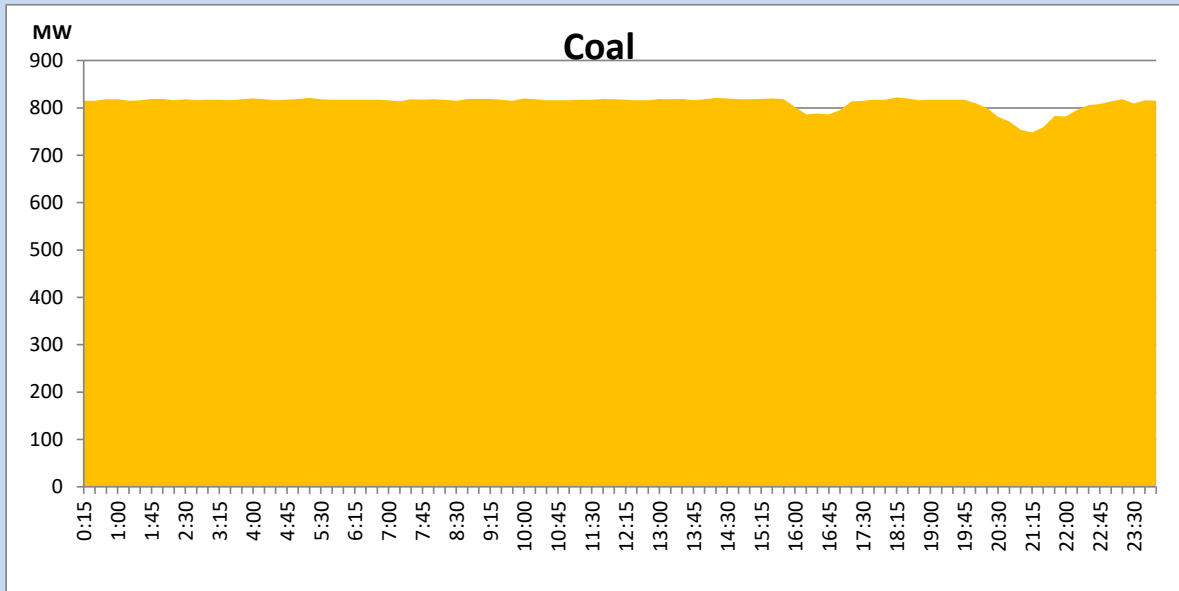
March 3, 2022

Solar and wind data is based on Telemetered Power Stations only



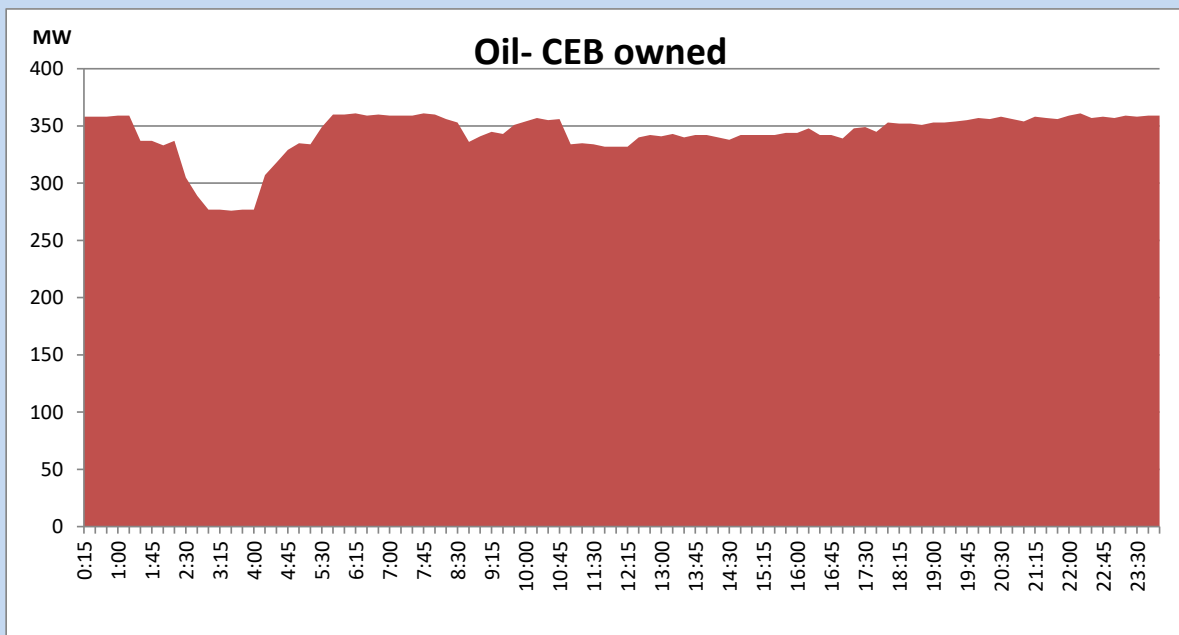
## Coal Generation during the Previous day

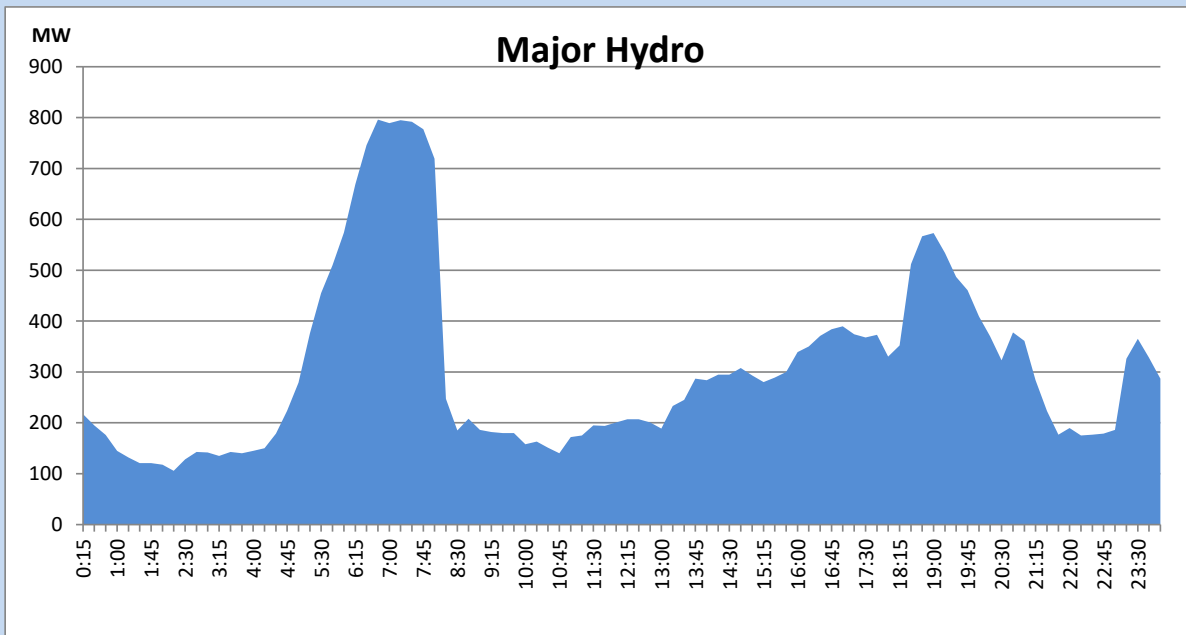
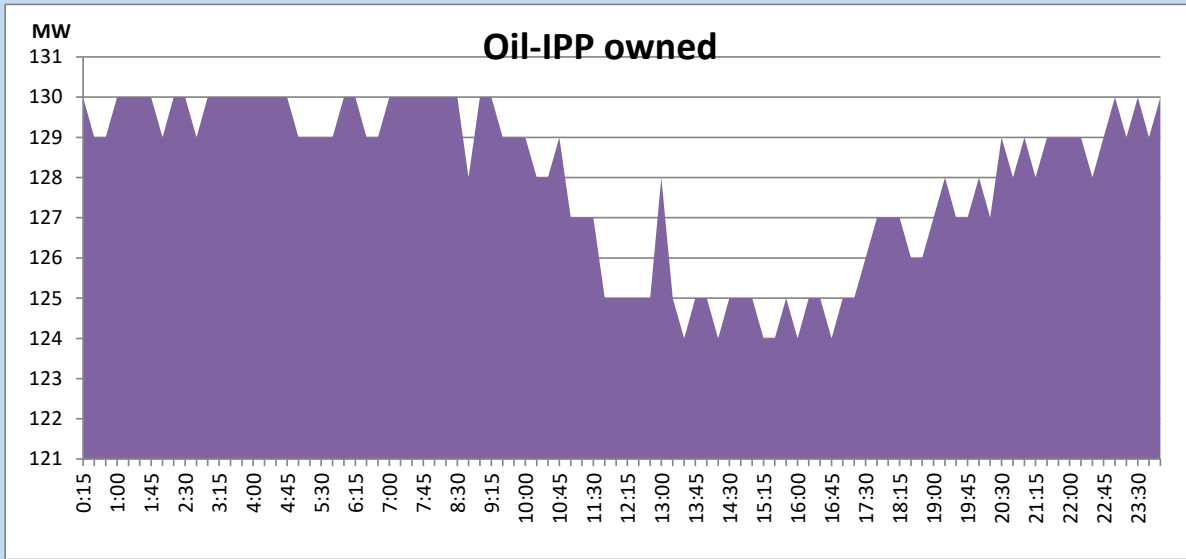
March 3, 2022



## CEB Oil Plant Generation during the Previous day

March 3, 2022

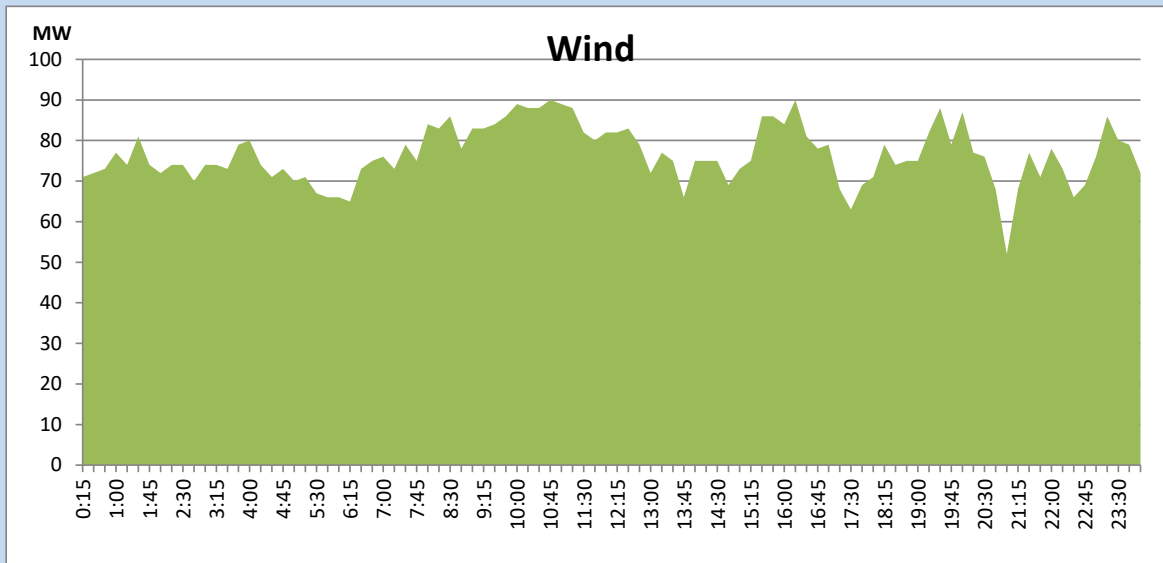




## Wind Generation during the Previous day

March 3, 2022

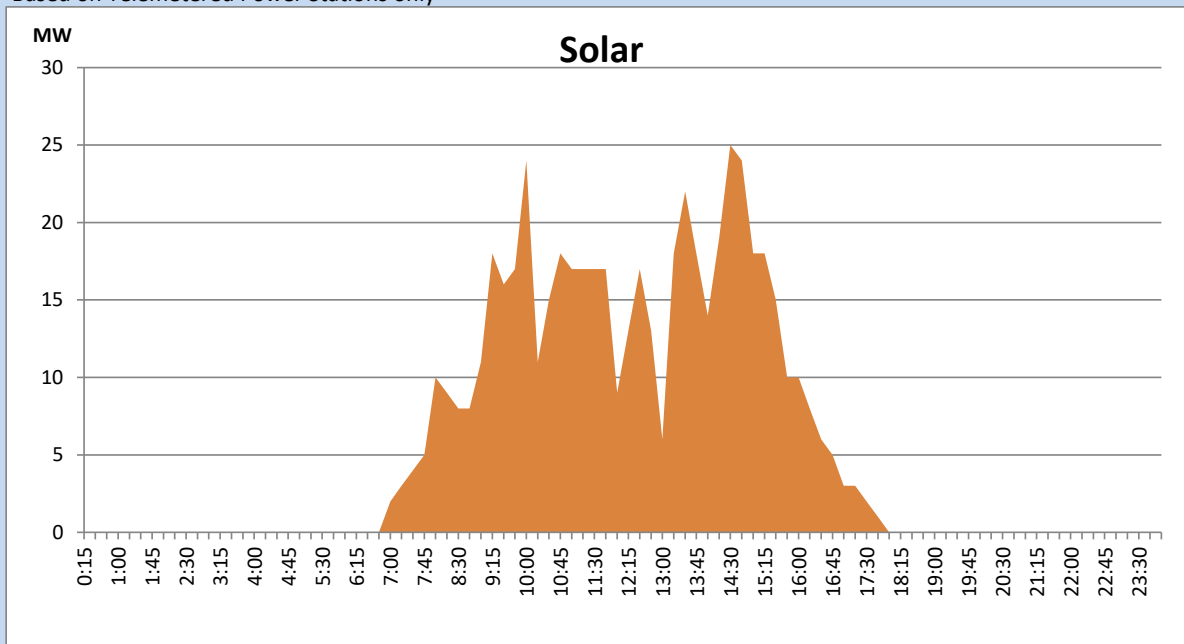
Based on Telemetered Power Stations only



## Solar Generation during the Previous day

March 3, 2022

Based on Telemetered Power Stations only



# Cumulative Dispatch Comparison with Last Year



## Thermal Plant Fuel types

Power Station	Primary Fuel
CEB Thermal	
Sapugaskanda 1	Heavy Fuel
Sapugaskanda 2	Heavy Fuel
Kelanitissa Small Gas Turbines	Auto Diesel
GT 7 - Kelanitissa	Auto Diesel
Kelanitissa CCY	Naphtha & Diesel
Lakvijaya 1	Coal
Lakvijaya 2	Coal
Lakvijaya 3	Coal
Uthuru Janani	Heavy Fuel
Barge CEB	Heavy Fuel

Power Station	Primary Fuel
Private Thermal	
Sojitz - Kelanitissa	Auto Diesel
West Coast	Auto Diesel

### Major Incidents during the day -as reported by CEB morning of

March 5, 2022

- 1) Rotational manual load shedding was carried out from 08:00hrs to 23:00hrs .
- 2) WCP resumed generation at 18:05hrs after receiving fuel.
- 3) KCCP resumed generation at 20:39hrs after receiving fuel..
- 4) Power Barge performed a forced shutdown at 21:00hrs due to lack of fuel.