

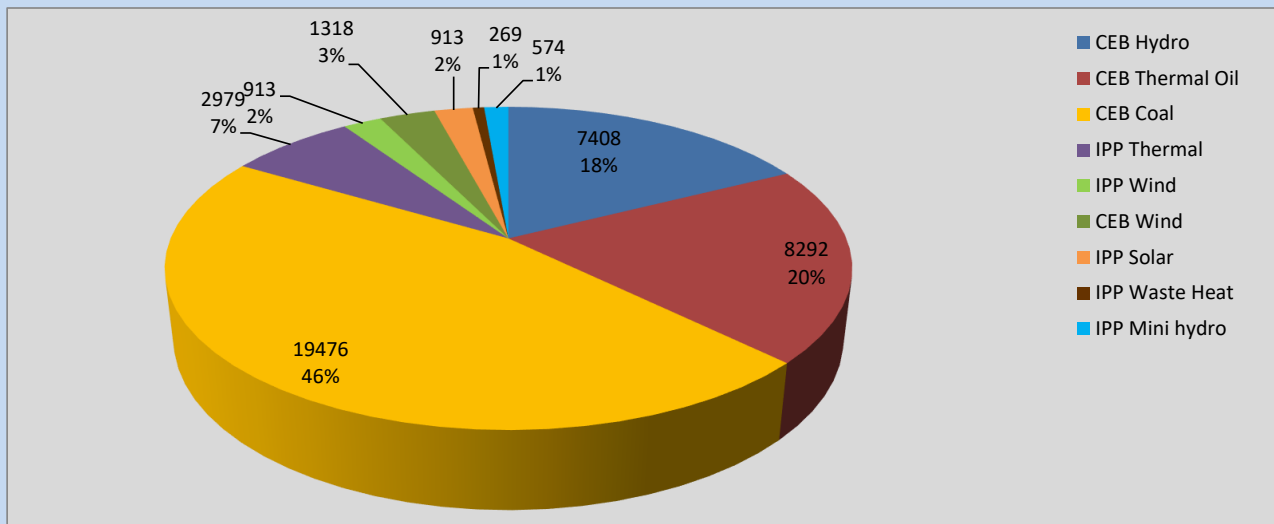
# Generation and Reservoirs Statistics

March 3, 2022



PUBLIC UTILITIES COMMISSION OF SRI LANKA

## Daily Generation Mix in MWh



Total Generation

41,381 MWh

Note: Above data is excluding contribution from Roof Top Solar, 1MW Solar and certain Mini Hydro plants

## Cumulative Dispatch

Note: Following data is Excluding contribution from Roof Top Solar, 1MW solar and Mini Hydro plants

### For Current Month

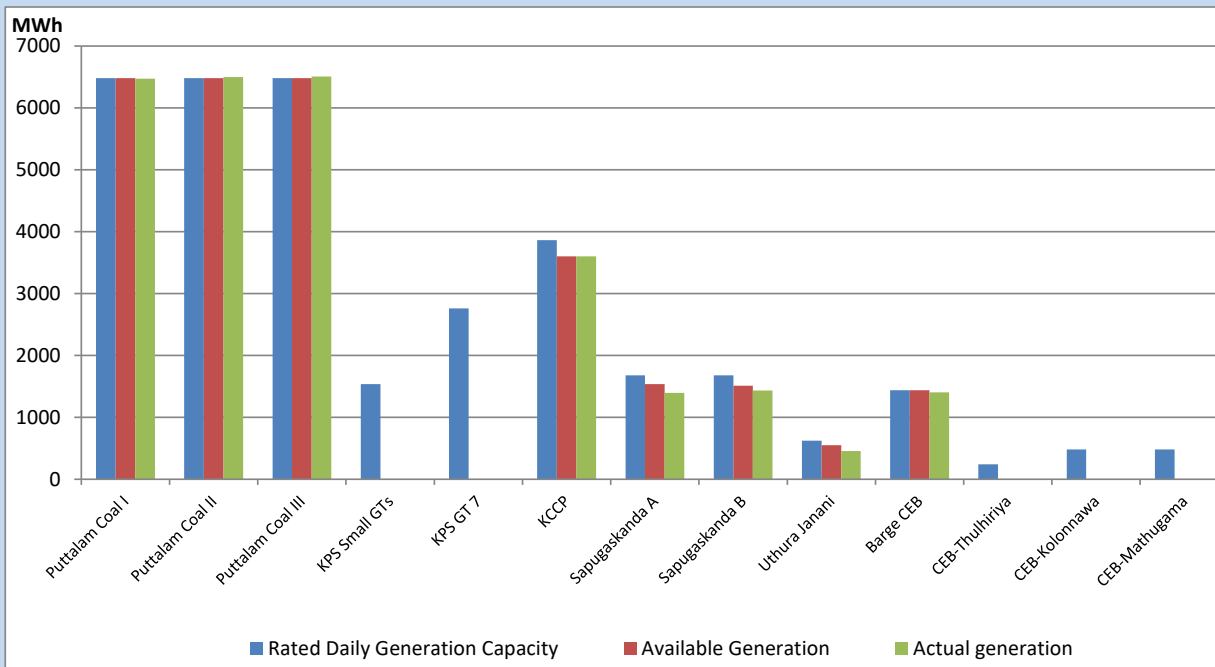
Category	Dispatch (GWh)	Percentage
CEB Hydro	27.79	21.73%
CEB Thermal Oil	16.06	12.56%
CEB Coal	58.62	45.84%
IPP Thermal	16.66	13.03%
SPP Wind	2.30	1.80%
CEB Wind	3.44	2.69%
SPP Solar	0.56	0.44%
SPP Solid Waste	0.81	0.63%
Mini Hydro	1.63	1.27%
<b>Total</b>	<b>127.87</b>	

### For Current Year

Category	Dispatch (GWh)	Percentage
CEB Hydro	705.6	26.22%
CEB Thermal Oil	428.3	15.91%
CEB Coal	1,002.2	37.24%
IPP Thermal	408.1	15.16%
SPP Wind	30.4	1.13%
CEB Wind	37.7	1.40%
SPP Solar	15.9	0.59%
SPP Solid Waste	11.9	0.44%
Mini Hydro	51.3	1.91%
<b>Total</b>	<b>2,691.1</b>	

## CEB owned Thermal Plant Dispatch

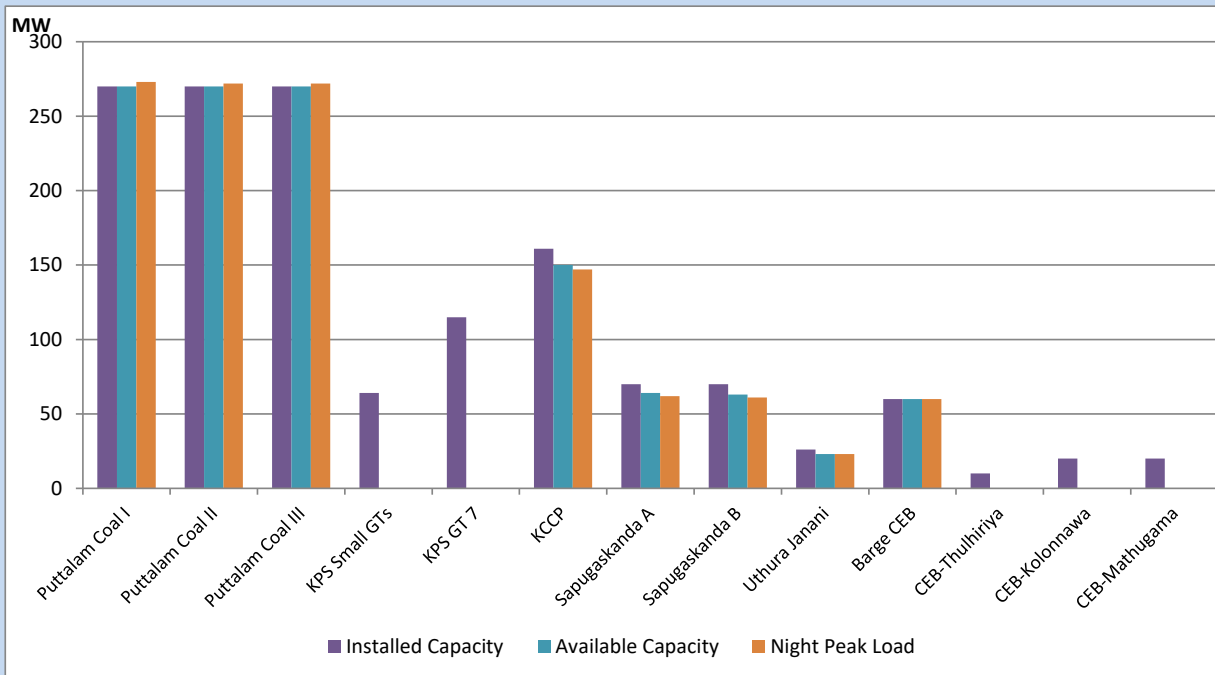
March 3, 2022



Available Generation is estimated based on plant availability at 6.00am on

March 4, 2022

## CEB owned Thermal Plant Loading at the Night Peak



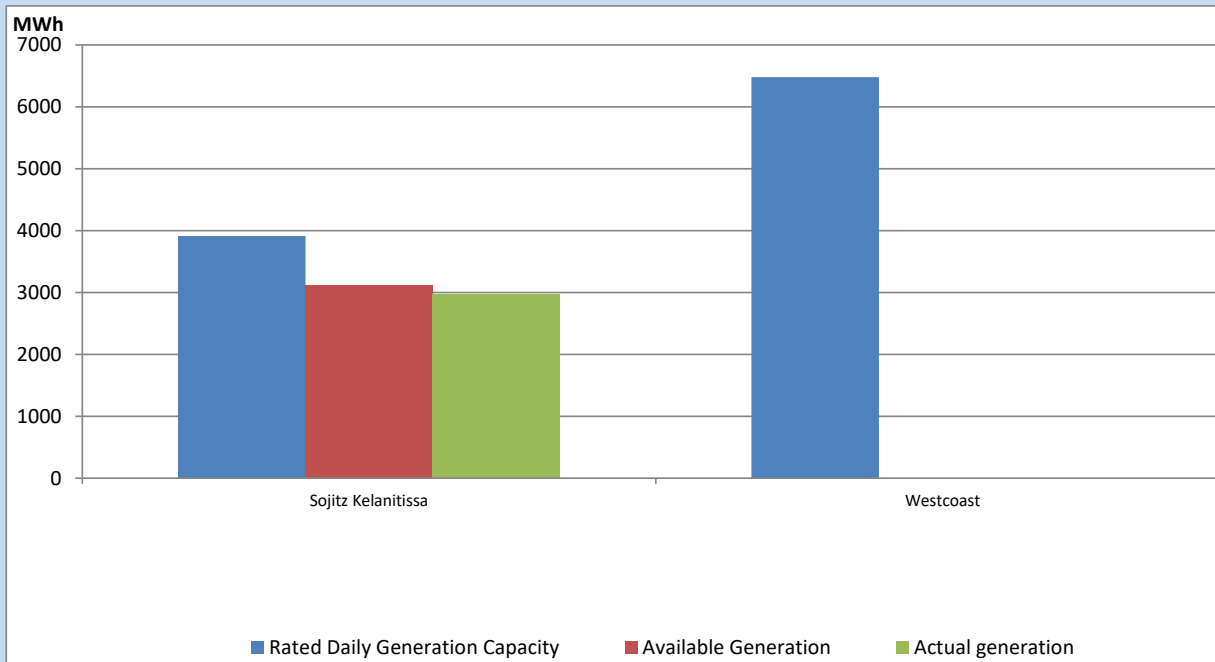
Note- Plant availability is recorded at 6.00 am on

March 4, 2022

## IPP owned Thermal Plant Dispatch

March 3, 2022

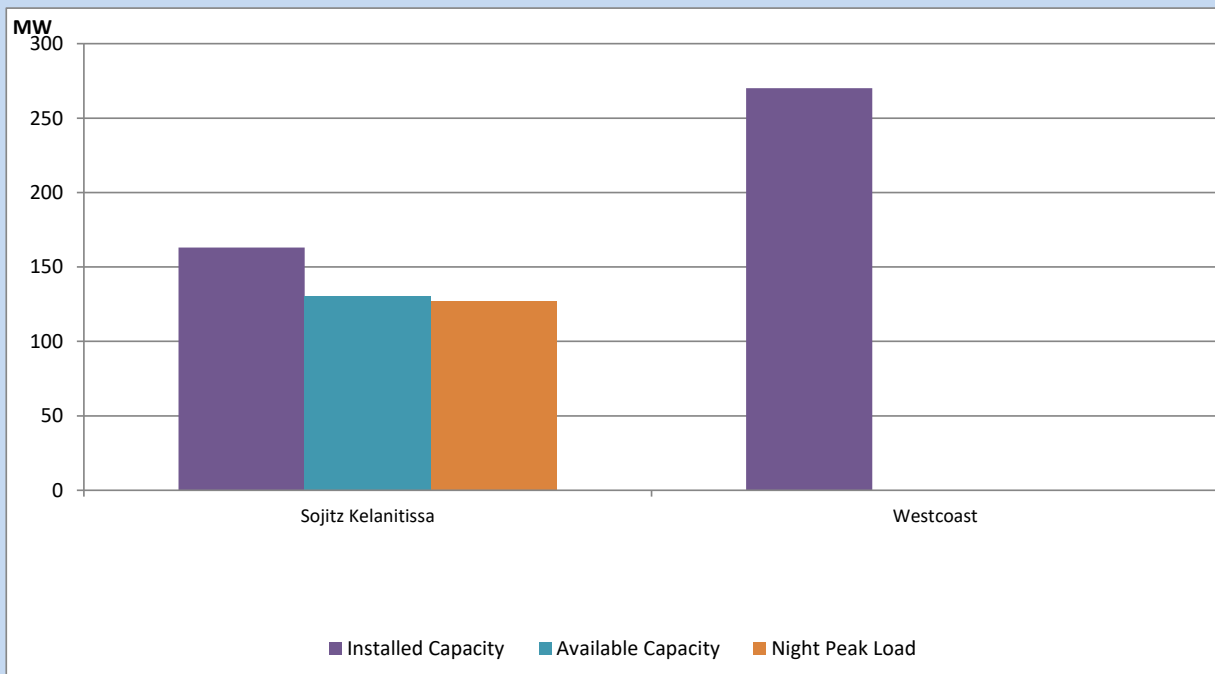
ACE Embilipitiya, ACE Matara, Asia Power, V Power Pallekale, Vpower Galle, V Power Horana, Vpower Hambantota, Vpower Valachchena and Altaqa Mahiyanganaya are not available due to expiration of PPAs



Available Generation is estimated based on plant availability at 6.00am on

March 4, 2022

## IPP owned Thermal Plant Loading at the Night Peak

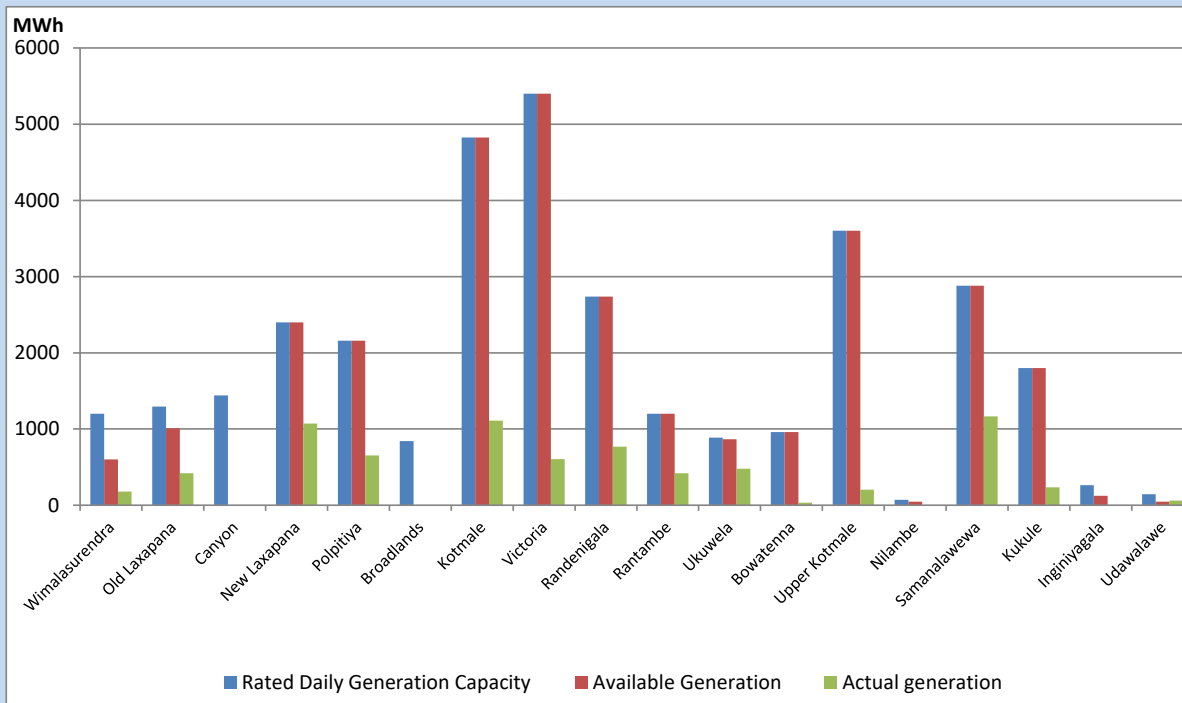


Note- Plant availability is recorded at 6.00 am on

March 4, 2022

## Major Hydro Plant Dispatch

March 3, 2022

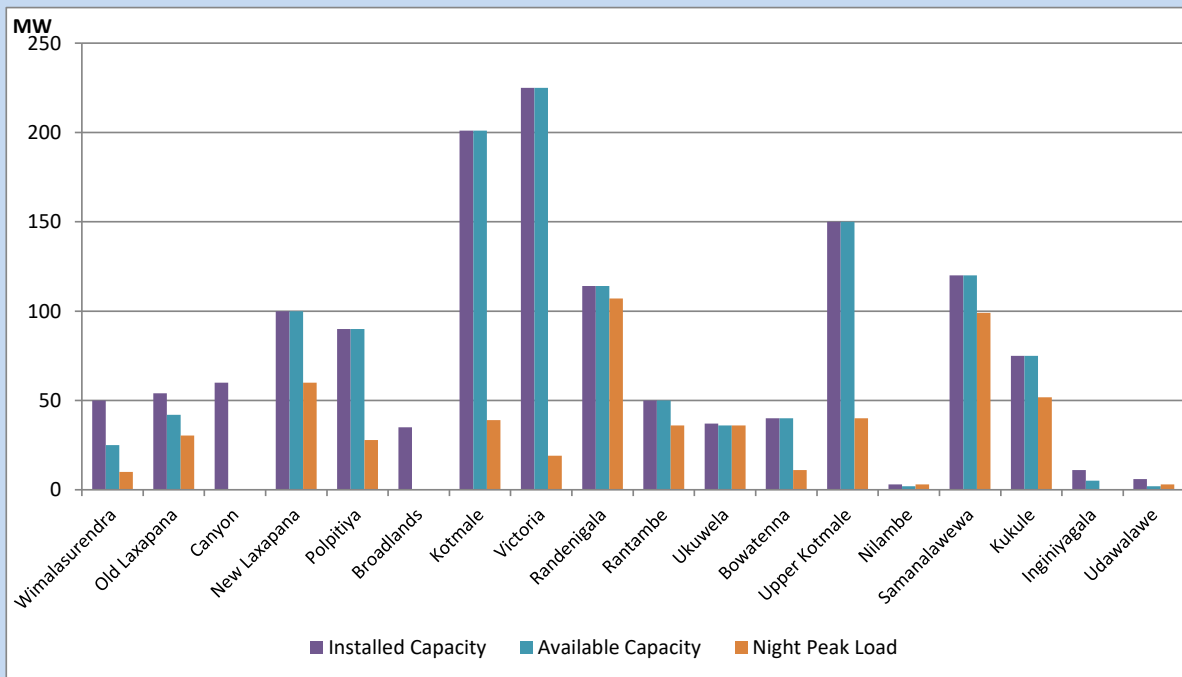


Available Generation is estimated based on plant availability at 6.00am on  
Broadlands power plant is operating in the Commissioning Stage

March 4, 2022

## Major Hydro Plant Loading at Night Peak

March 3, 2022



Note- Plant availability is recorded at 6.00 am on  
Broadlands power plant is operating in the Commissioning Stage

March 4, 2022

## Summary of Major Plant performance

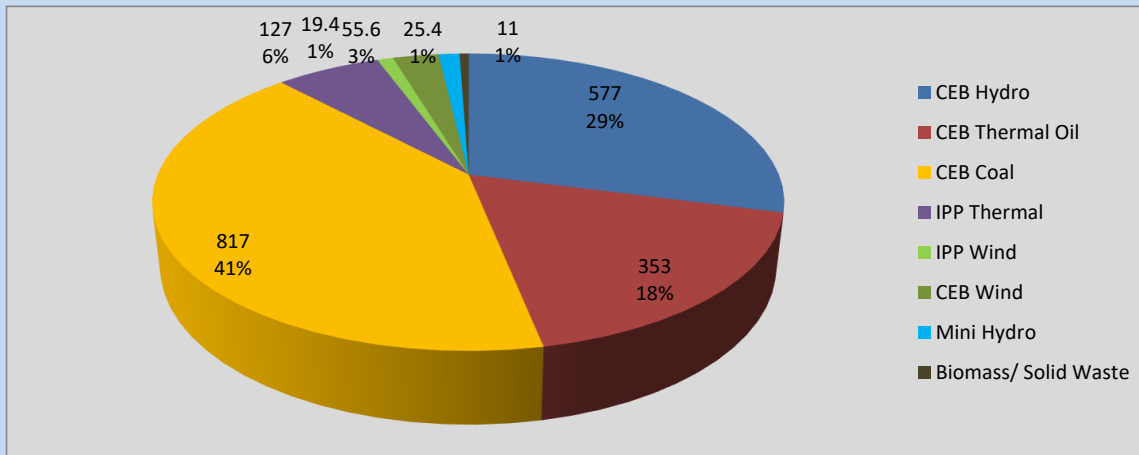
Plant	Installed Capacity	Plant Availability	Night peak Load	Plant Dispatch
	(MW)	(MW)	(MW)	(MWh)
Wimalasurendra	50	25	10	180
Old Laxapana	54	42	30	420
Canyon	60	0	0	0
New Laxapana	100	100	60	1,072
Polpitiya	90	90	28	654
Broadlands	35	0	0	0
Kotmale	201	201	39	1,110
Victoria	225	225	19	606
Randenigala	114	114	107	769
Rantambe	50	50	36	420
Ukuwela	37	36	36	480
Bowatenna	40	40	11	32
Upper Kotmale	150	150	40	204
Nilambe	3	2	3	0
Samanalawewa	120	120	99	1,167
Kukule	75	75	52	234
Inginiyagala	11	5	0	0
Udawalawe	6	2	3	60
Puttalam Coal I	270	270	273	6,474
Puttalam Coal II	270	270	272	6,497
Puttalam Coal III	270	270	272	6,505
KPS Small GTs	64	0	0	0
KPS GT 7	115	0	0	0
KCCP	161	150	147	3,600
Sapugaskanda A	70	64	62	1,394
Sapugaskanda B	70	63	61	1,436
Uthura Janani	26	23	23	456
Barge CEB	60	60	60	1,406
CEB-Thulhiriya	10	0	0	0
CEB-Kolonnawa	20	0	0	0
CEB-Mathugama	20	0	0	0
Sojitz Kelanitissa	163	130	127	2,979
West Coast	270	0	0	0
<b>Total</b>	<b>3,280</b>	<b>2,577</b>	<b>1,981</b>	<b>41,381</b>

Plant availability is the availability recorded at 6 am on

March 4, 2022

## Contribution to the Night Peak in MW

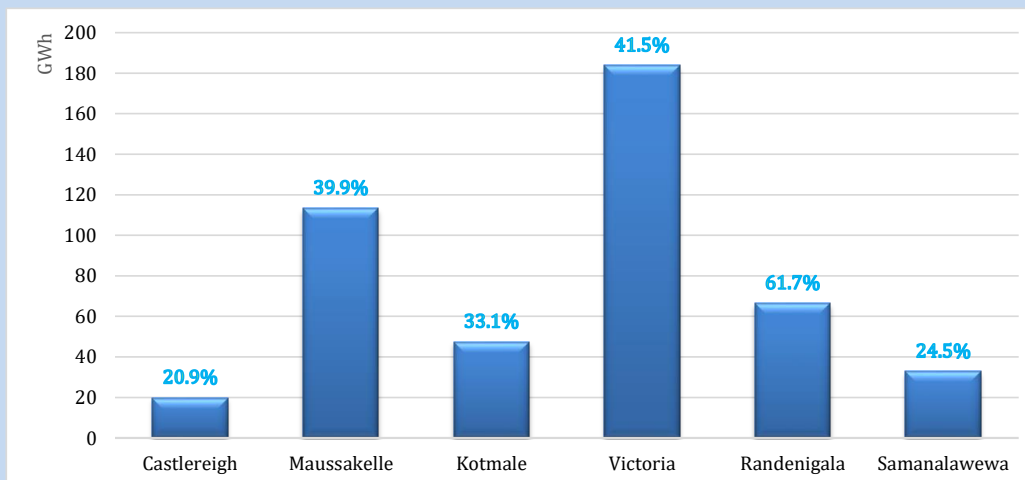
March 3, 2022



Night Peak*	1,985.4 MW
Day Peak	1,734.9 MW
Minimum Demand	1,472.5 MW

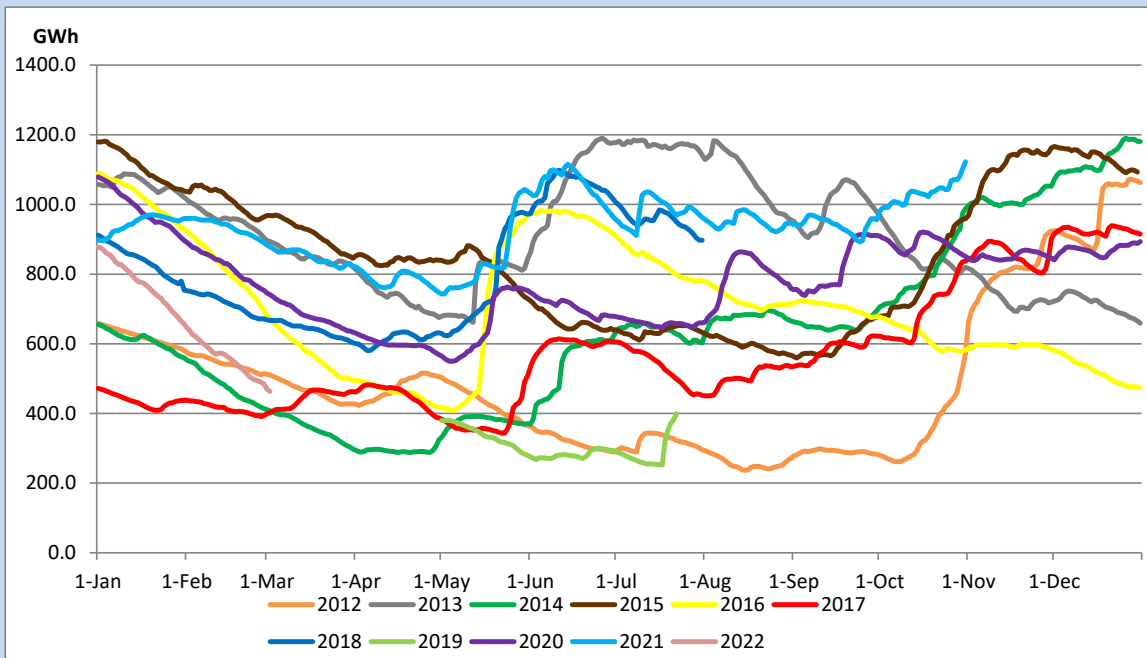
Above figures are excluding contribution from Roof Top Solar, 1MW solar, certain Wind plants and Mini Hydro plants

## Reservoir Levels - as at 06.00 Hr on March 4, 2022



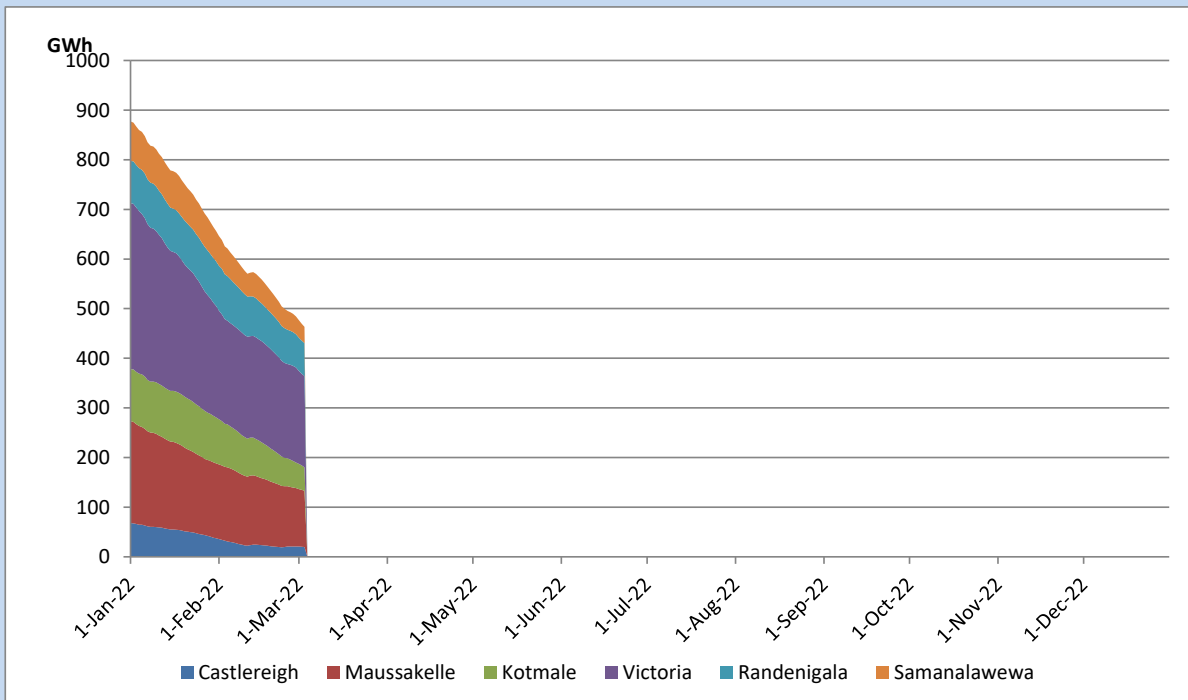
Total Reservoir Level	463.3 GWh
% of Total capacity	36.9%

## Comparison of Total Reservoir Storage Levels with Past Years



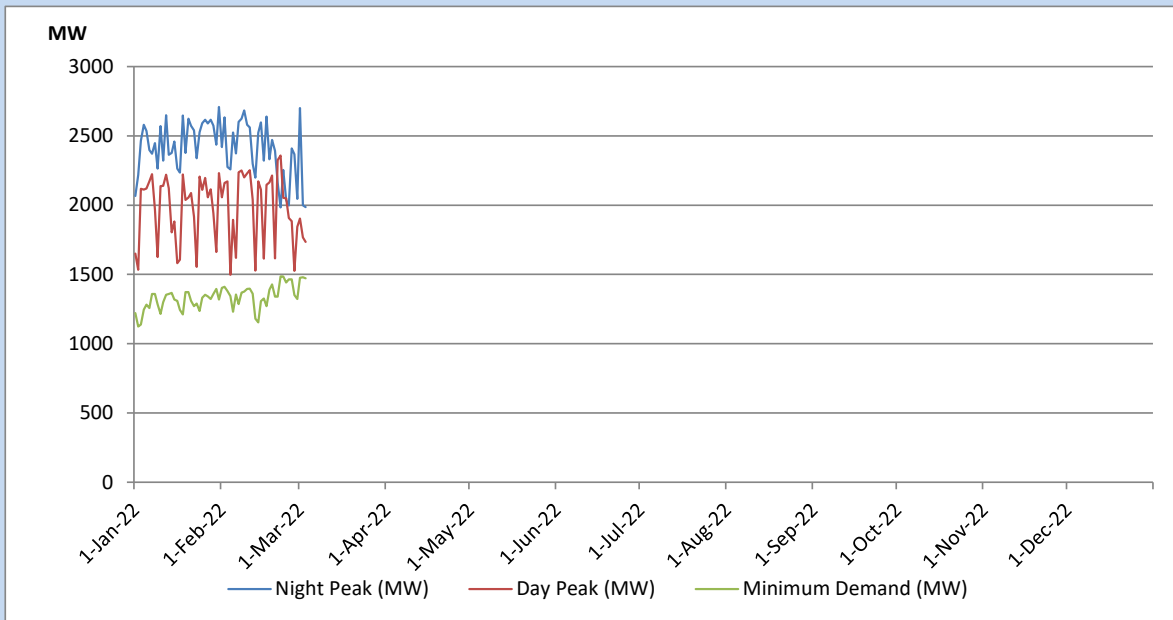
Data for 2018 and 2019 are only available for part of year.

## Variation of Major Hydro Reservoir Levels in the current year (GWh)





## Variation of Demand during the current year

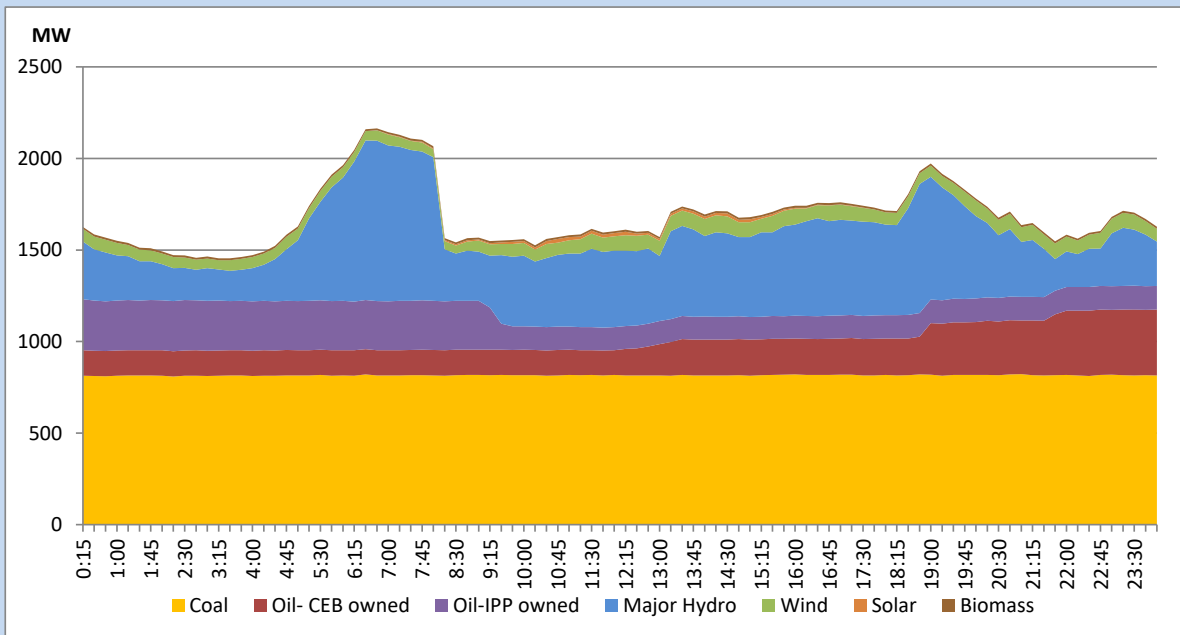


The above figures are excluding contribution from Roof Top Solar, 1MW solar, certain Wind plants and Mini Hydro plants

## Daily Load Curve of the Previous day

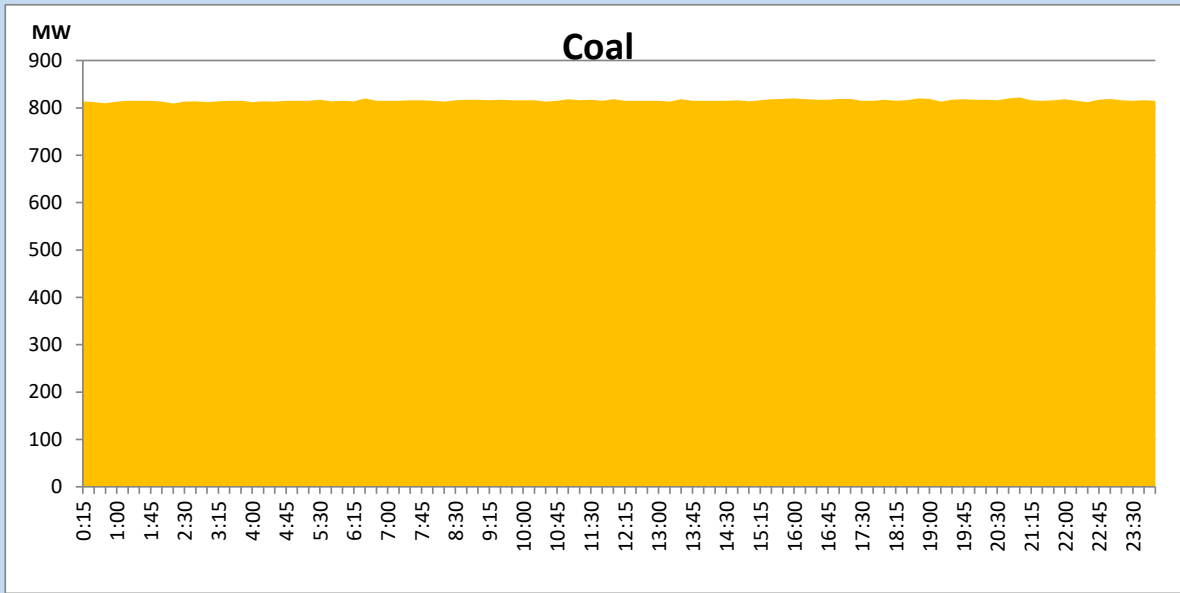
March 2, 2022

Solar and wind data is based on Telemetered Power Stations only



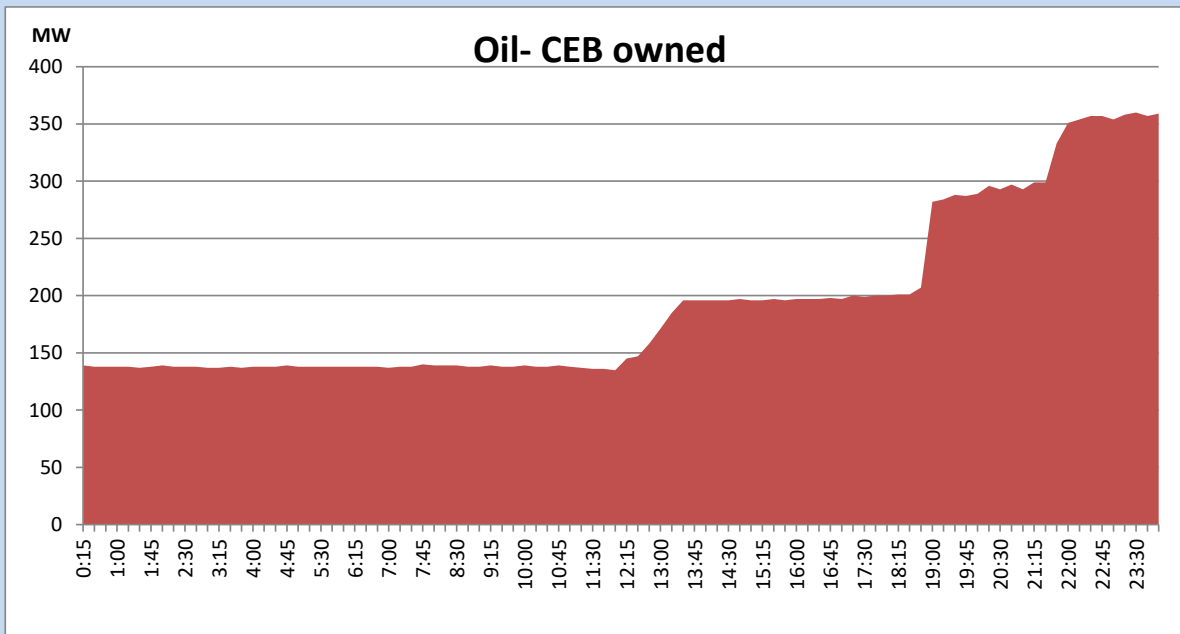
## Coal Generation during the Previous day

March 2, 2022



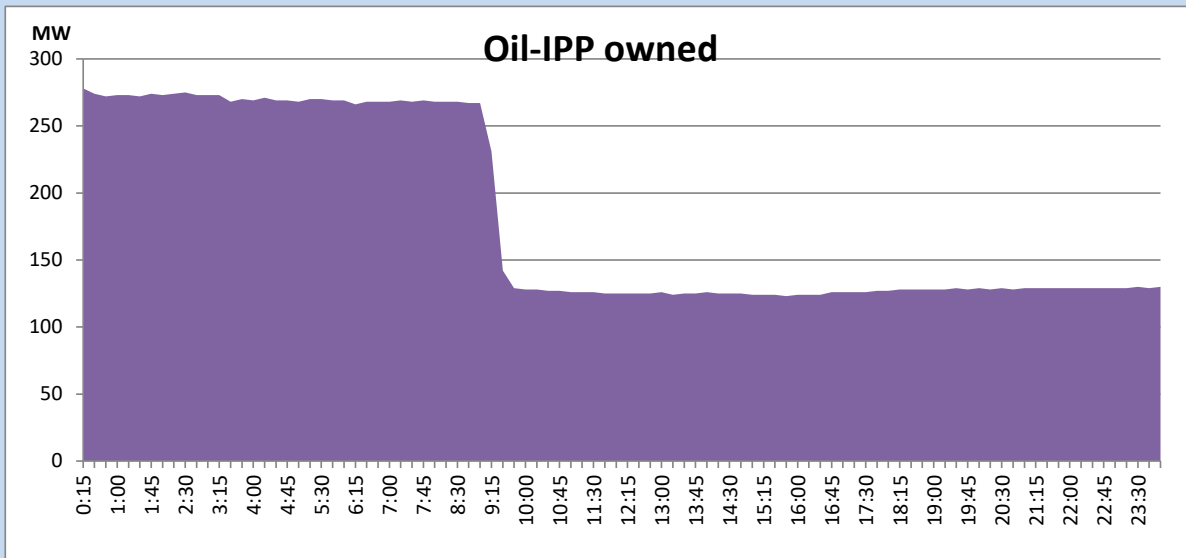
## CEB Oil Plant Generation during the Previous day

March 2, 2022



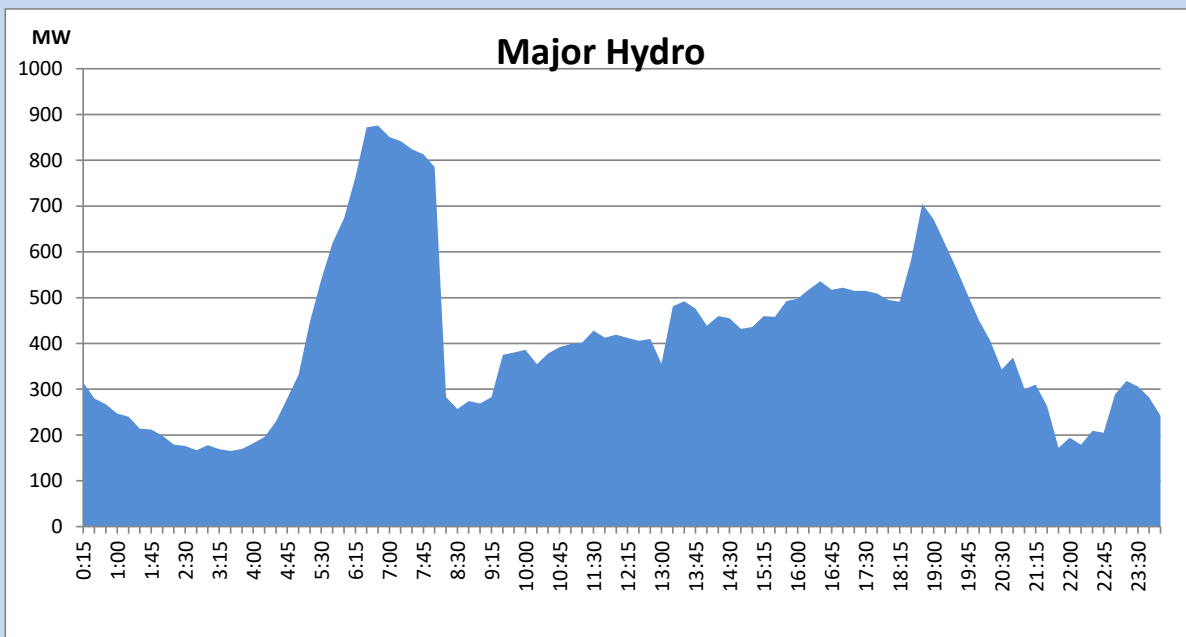
## IPP Oil Plant Generation during the Previous day

March 2, 2022



## Major Hydro Generation during the Previous day

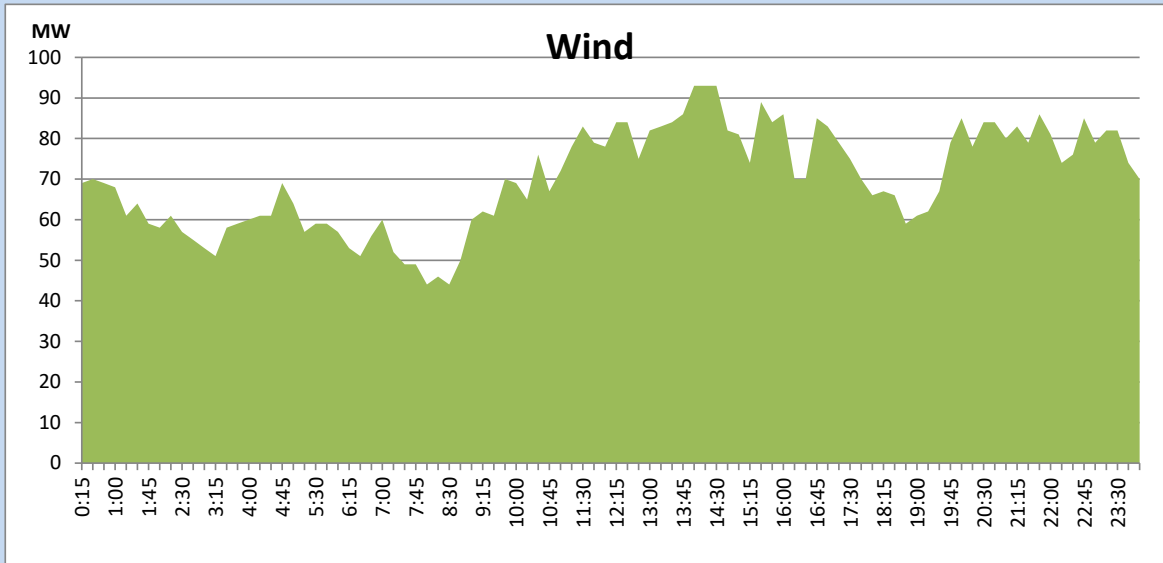
March 2, 2022



## Wind Generation during the Previous day

March 2, 2022

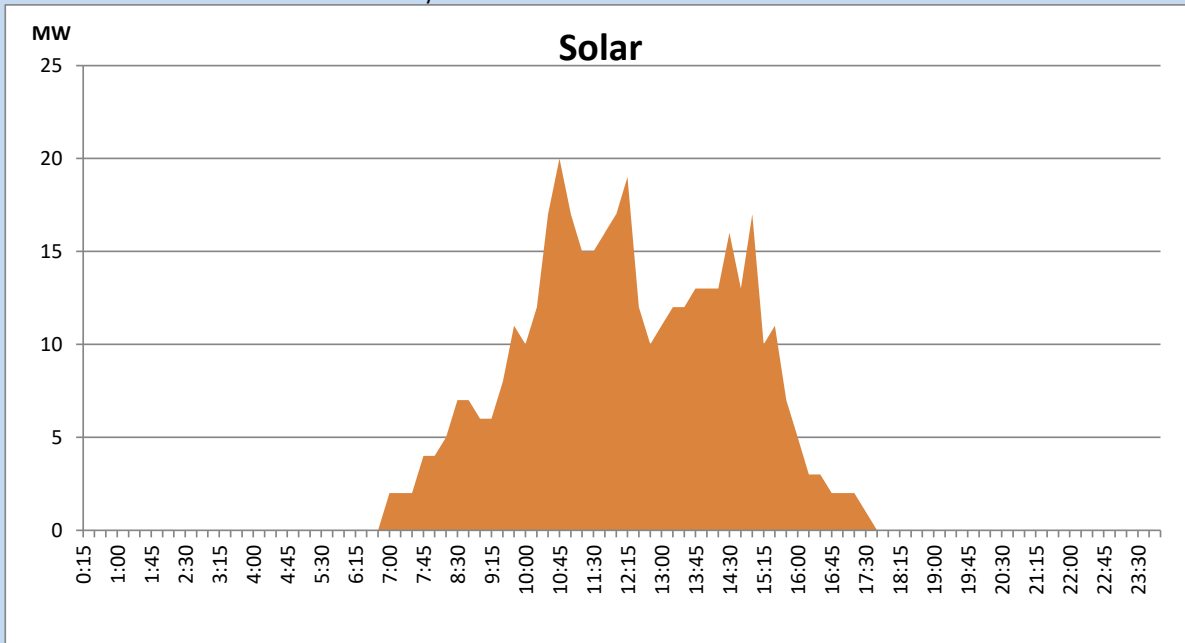
Based on Telemetered Power Stations only



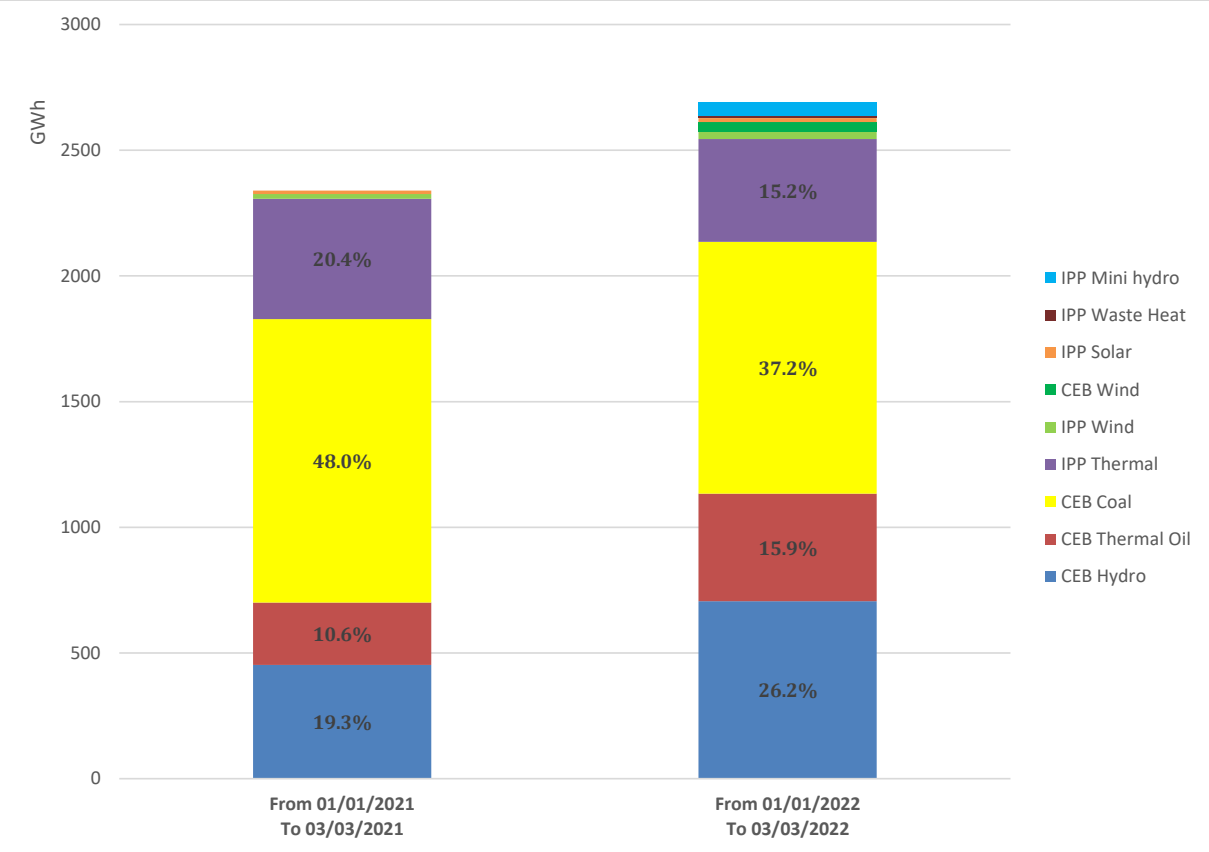
## Solar Generation during the Previous day

March 2, 2022

Based on Telemetered Power Stations only



# Cumulative Dispatch Comparison with Last Year



## Thermal Plant Fuel types

Power Station	Primary Fuel
CEB Thermal	
Sapugaskanda 1	Heavy Fuel
Sapugaskanda 2	Heavy Fuel
Kelanitissa Small Gas Turbines	Auto Diesel
GT 7 - Kelanitissa	Auto Diesel
Kelanitissa CCY	Naphtha & Diesel
Lakvijaya 1	Coal
Lakvijaya 2	Coal
Lakvijaya 3	Coal
Uthuru Janani	Heavy Fuel
Barge CEB	Heavy Fuel

Power Station	Primary Fuel
Private Thermal	
Sojitz - Kelanitissa	Auto Diesel
West Coast	Auto Diesel

### Major Incidents during the day -as reported by CEB morning of

March 4, 2022

- 1) Rotational manual load shedding was carried out from 08:00hrs to 23:00hrs .
- 2) Kelaniya-Sapugaskanda cct-02 tripped at 17:58 hrs from both ends due to operation of DEF protection. Cct restored at 19:30 hrs.
- 3) KCCP made forced shutdown at 00:20 hrs (on 04/03/2022) due to lack of fuel.