

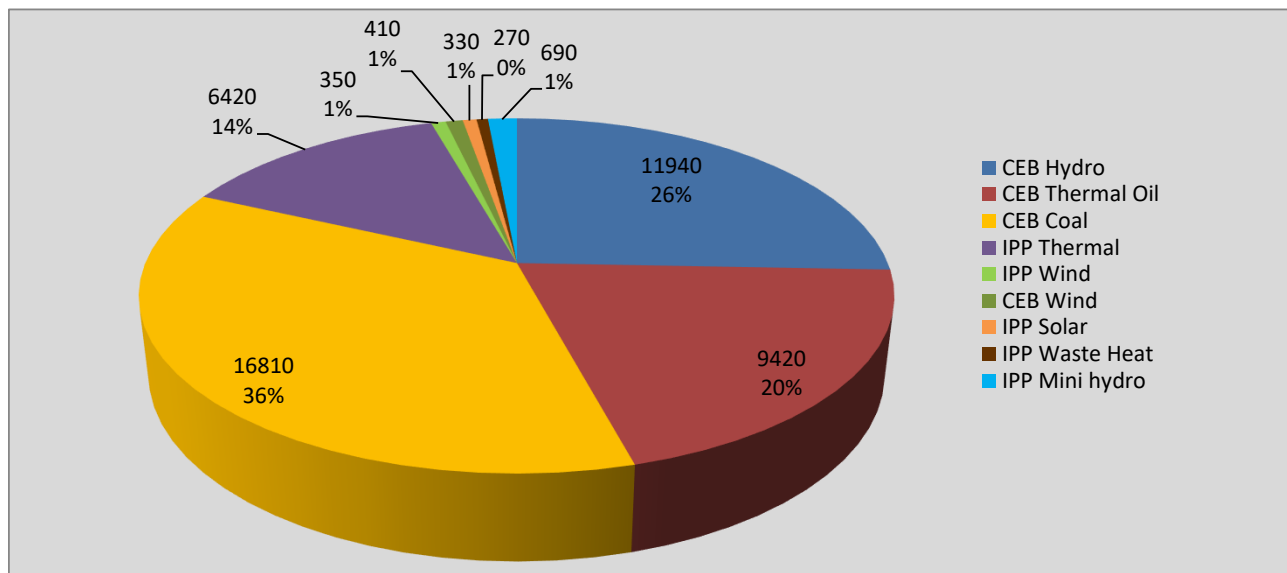
Generation and Reservoirs Statistics

February 2, 2022



PUBLIC UTILITIES COMMISSION OF SRI LANKA

Daily Generation Mix in MWh



Total Generation **46,640 MWh**

Note: Above data is excluding contribution from Roof Top Solar, 1MW Solar and certain Mini Hydro plants

Cumulative Dispatch

Note: Following data is Excluding contribution from Roof Top Solar, 1MW solar and Mini Hydro plants

For Current Month

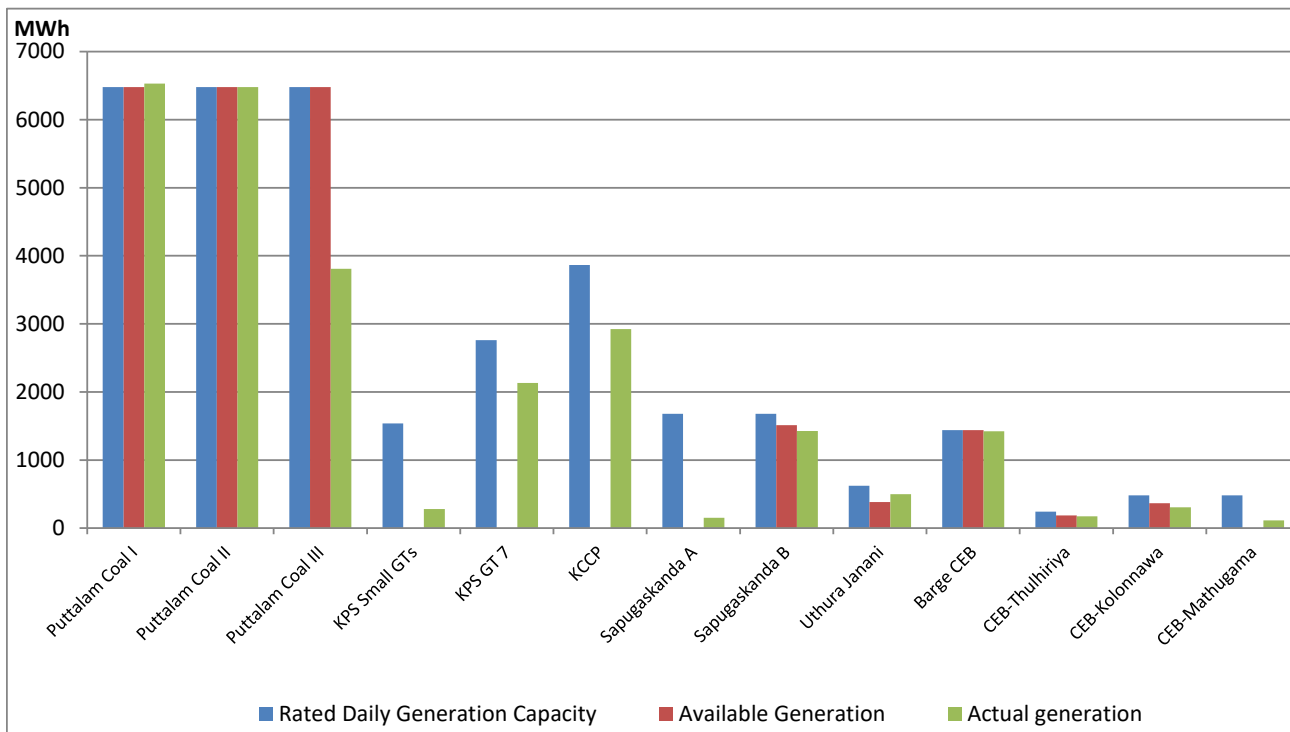
Category	Dispatch (GWh)	Percentage
CEB Hydro	25.6	27.95%
CEB Thermal Oil	18.8	20.55%
CEB Coal	29.8	32.45%
IPP Thermal	13.0	14.15%
SPP Wind	0.9	0.94%
CEB Wind	1.0	1.06%
SPP Solar	0.6	0.70%
SPP Solid Waste	0.5	0.59%
Mini Hydro	1.5	1.61%
Total	91.7	

For Current Year

Category	Dispatch (GWh)	Percentage
CEB Hydro	432.9	30.23%
CEB Thermal Oil	263.0	18.37%
CEB Coal	437.0	30.52%
IPP Thermal	217.0	15.16%
SPP Wind	16.2	1.13%
CEB Wind	19.1	1.33%
SPP Solar	8.6	0.60%
SPP Solid Waste	8.7	0.61%
Mini Hydro	29.7	2.07%
Total	1,431.8	

CEB owned Thermal Plant Dispatch

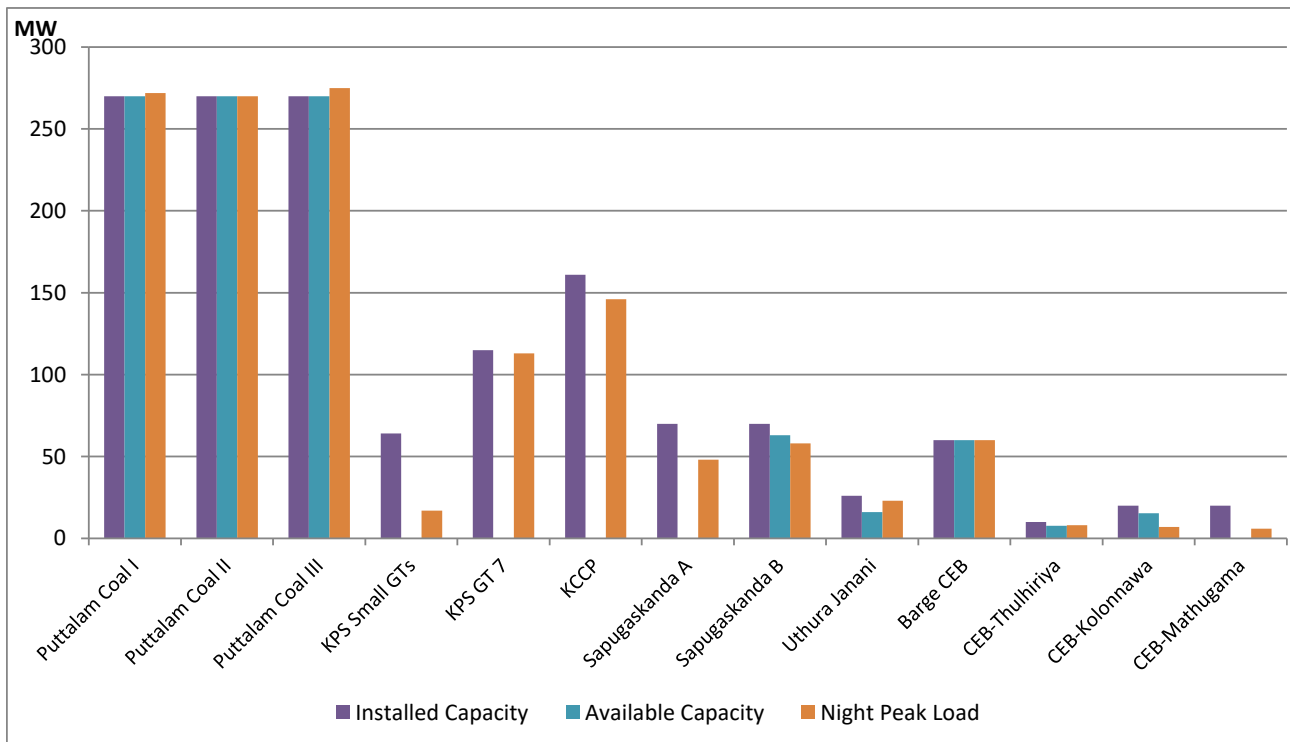
February 2, 2022



Available Generation is estimated based on plant availability at 6.00am on

February 3, 2022

CEB owned Thermal Plant Loading at the Night Peak



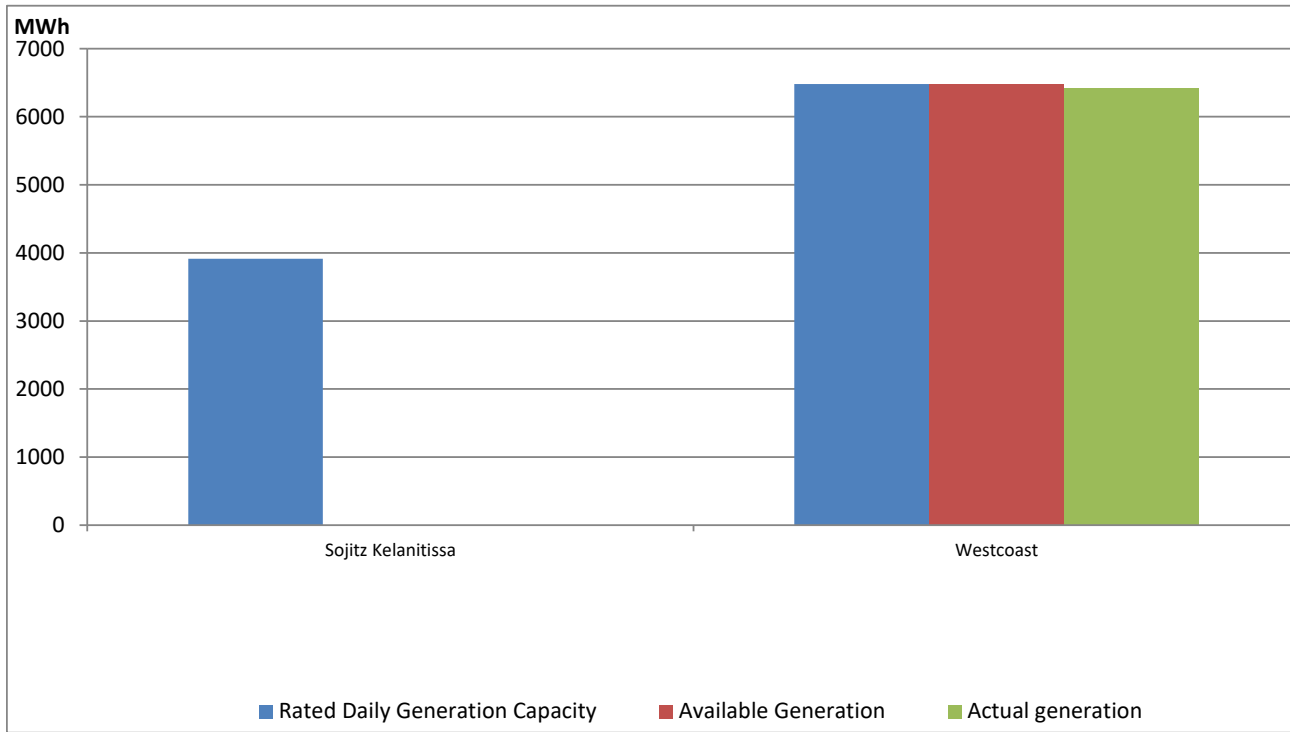
Note- Plant availability is recorded at 6.00 am on

February 3, 2022

IPP owned Thermal Plant Dispatch

February 2, 2022

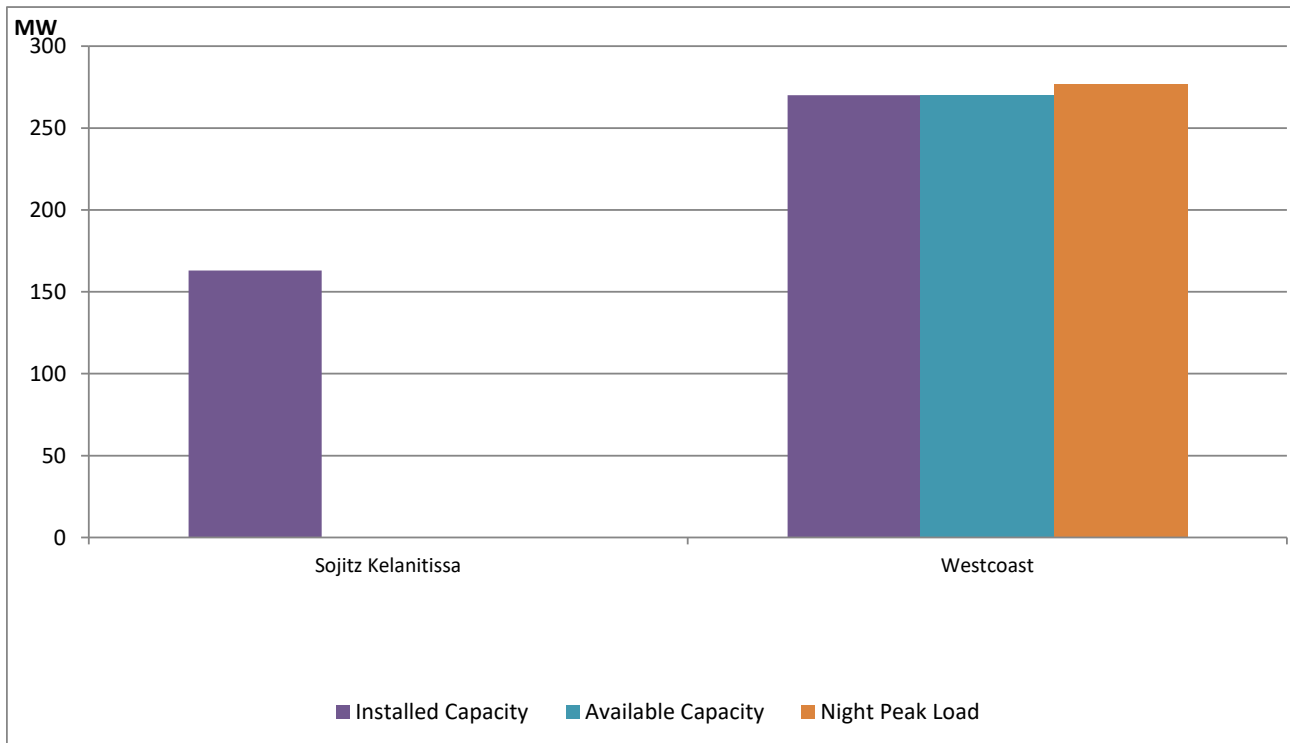
ACE Embilipitiya, ACE Matara, Asia Power, V Power Pallekale, Vpower Galle, V Power Horana, Vpower Hambantota, Vpower Valachchena and Altaqa Mahiyanganaya are not available due to expiration of PPAs



Available Generation is estimated based on plant availability at 6.00am on

February 3, 2022

IPP owned Thermal Plant Loading at the Night Peak

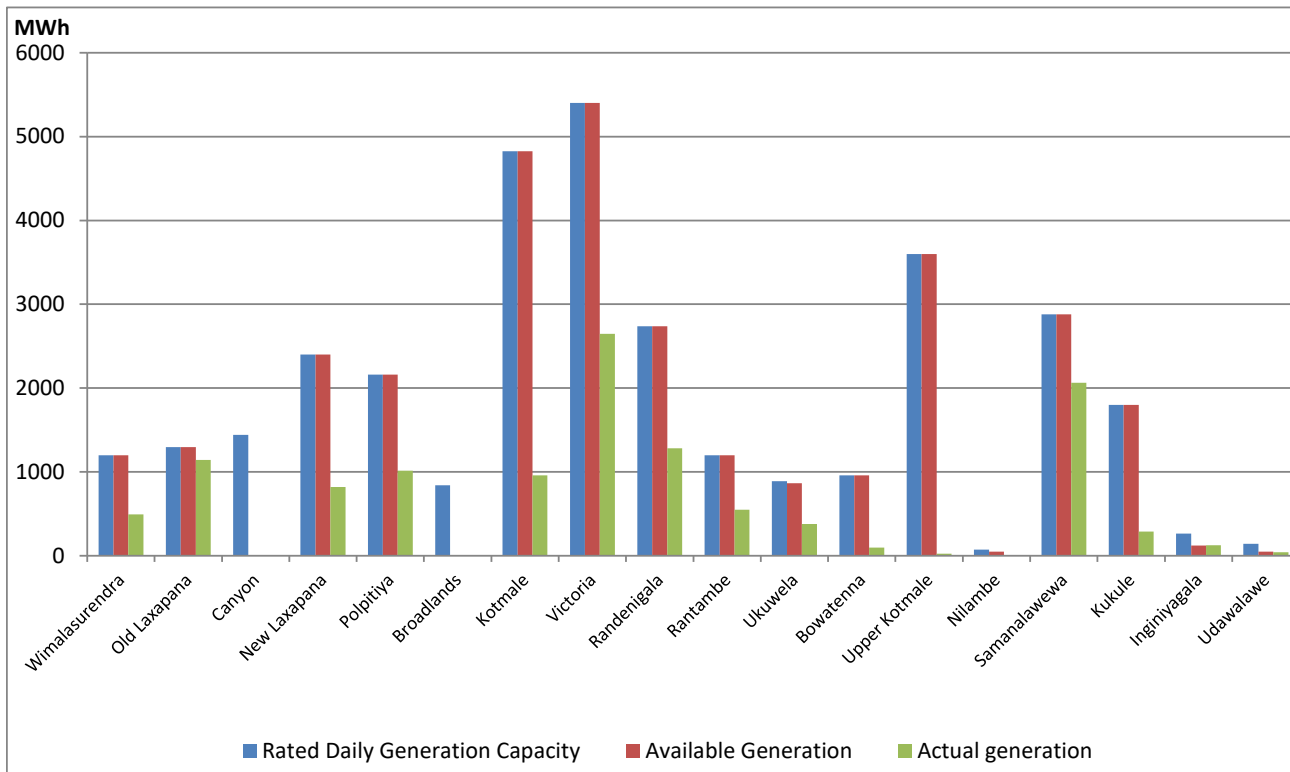


Note- Plant availability is recorded at 6.00 am on

February 3, 2022

Major Hydro Plant Dispatch

February 2, 2022

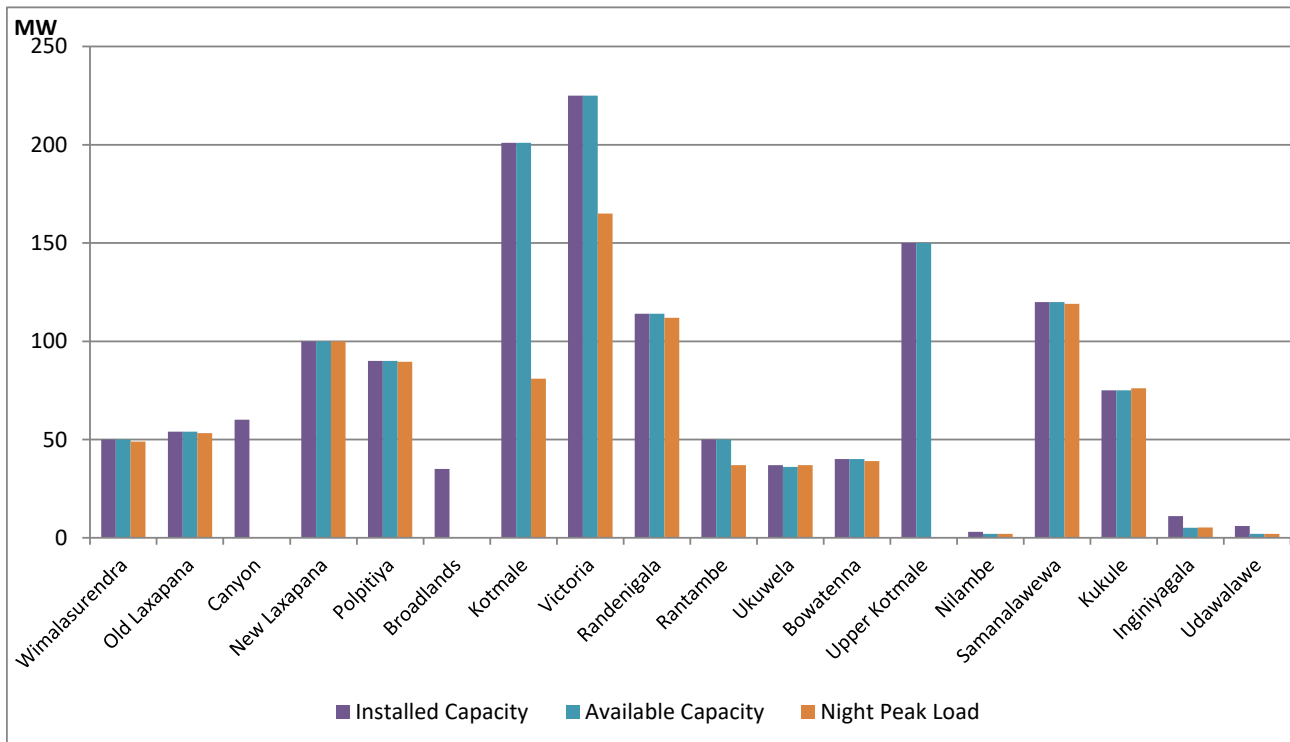


Available Generation is estimated based on plant availability at 6.00am on
Broadlands power plant is operating in the Commissioning Stage

February 3, 2022

Major Hydro Plant Loading at Night Peak

February 2, 2022



Note- Plant availability is recorded at 6.00 am on
Broadlands power plant is operating in the Commissioning Stage

February 3, 2022

Summary of Major Plant performance

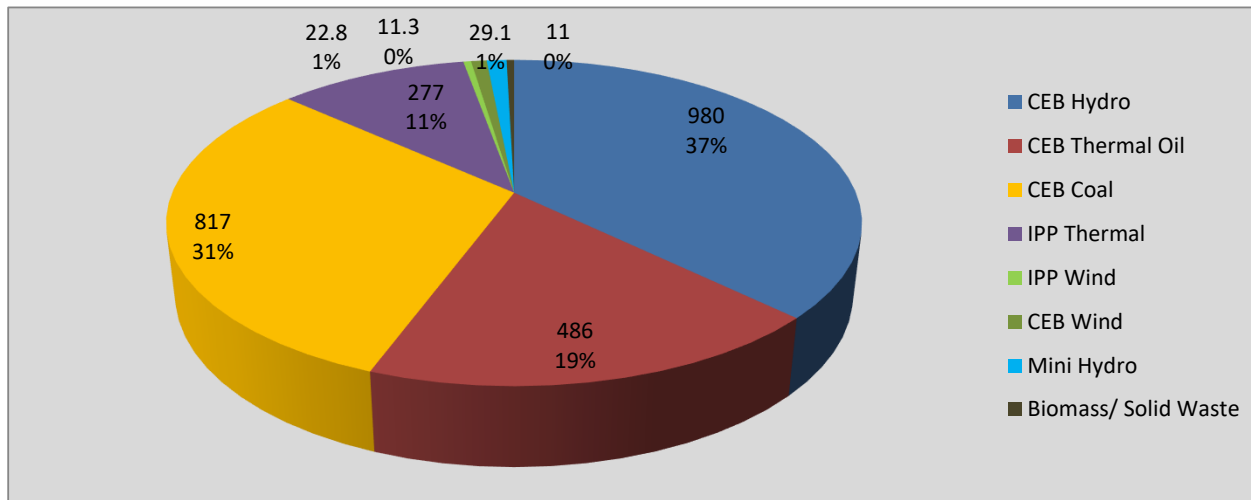
Plant	Installed Capacity (MW)	Plant Availability (MW)	Night peak Load (MW)	Plant Dispatch (MWh)
Wimalasurendra	50	50	49	493
Old Laxapana	54	54	53	1,144
Canyon	60	0	0	0
New Laxapana	100	100	100	821
Polpitiya	90	90	90	1,015
Broadlands	35	0	0	0
Kotmale	201	201	81	960
Victoria	225	225	165	2,647
Randenigala	114	114	112	1,281
Rantambe	50	50	37	550
Ukuwela	37	36	37	379
Bowatenna	40	40	39	99
Upper Kotmale	150	150	0	25
Nilambe	3	2	2	6
Samanalawewa	120	120	119	2,062
Kukule	75	75	76	289
Inginiyagala	11	5	5	124
Udawalawe	6	2	2	43
Puttalam Coal I	270	270	272	6,530
Puttalam Coal II	270	270	270	6,477
Puttalam Coal III	270	270	275	3,807
KPS Small GTs	64	0	17	280
KPS GT 7	115	0	113	2,130
KCCP	161	0	146	2,923
Sapugaskanda A	70	0	48	153
Sapugaskanda B	70	63	58	1,426
Uthura Janani	26	16	23	499
Barge CEB	60	60	60	1,421
CEB-Thulhiriya	10	8	8	174
CEB-Kolonnawa	20	15	7	306
CEB-Mathugama	20	0	6	112
Sojitz Kelanitissa	163	0	0	0
West Coast	270	270	277	6,418
Total	3,280	2,556	2,621	46,643

Plant availability is the availability recorded at 6 am on

February 3, 2022

Contribution to the Night Peak in MW

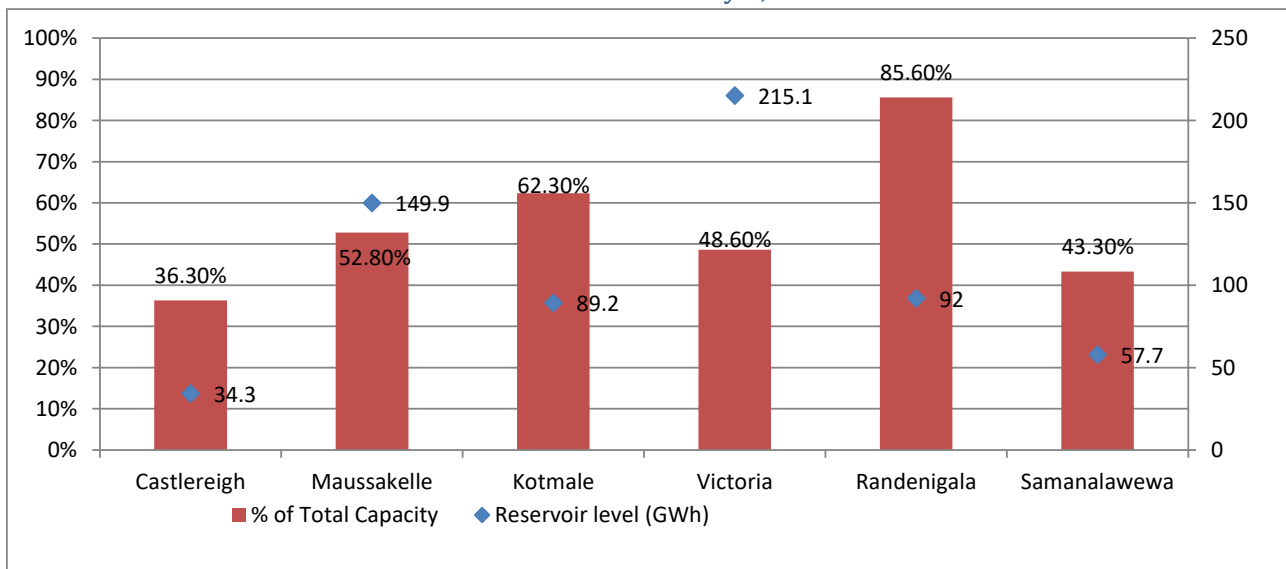
February 2, 2022



Night Peak*	2,634.4 MW
Day Peak	2,161.0 MW
Minimum Demand	1,411.5 MW

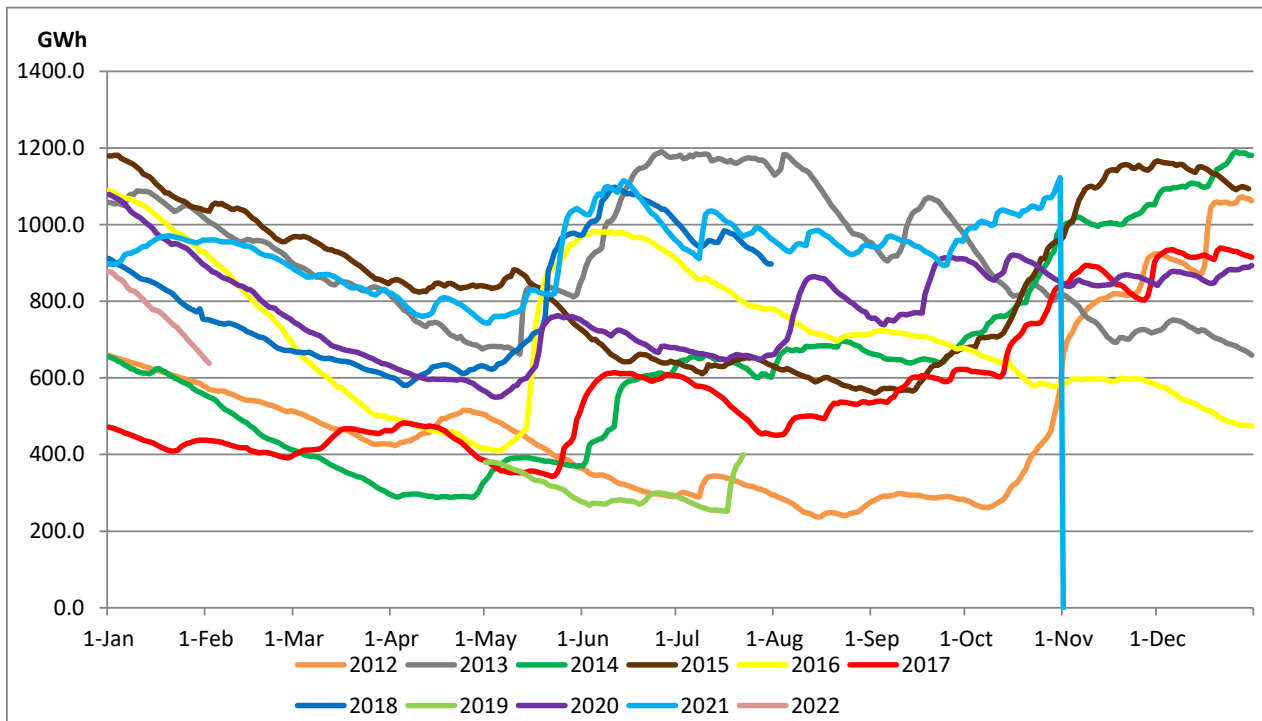
Above figures are excluding contribution from Roof Top Solar, 1MW solar, certain Wind plants and Mini Hydro plants

Reservoir Levels - as at 06.00 Hr on February 3, 2022



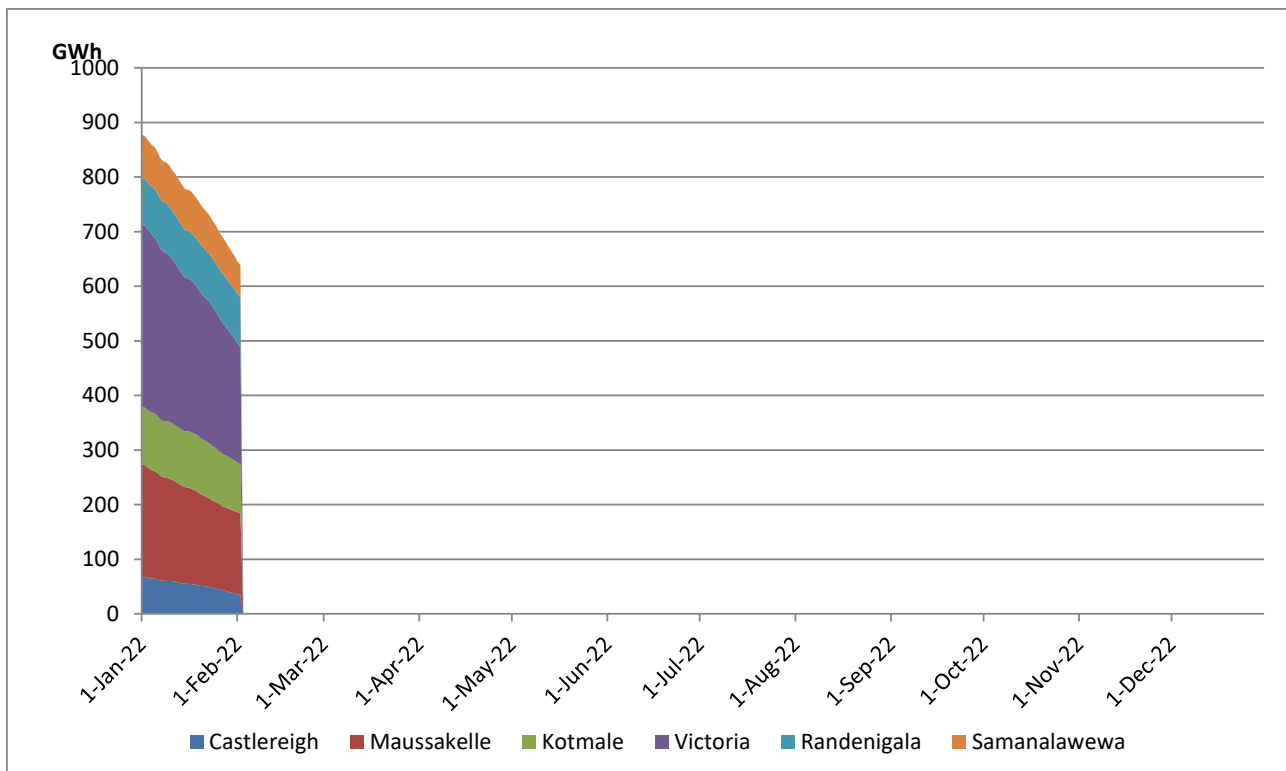
Total Reservoir Level(GWh)	638.2
% of Total capacity	54.8%

Comparison of Total Reservoir Storage Levels with Past Years

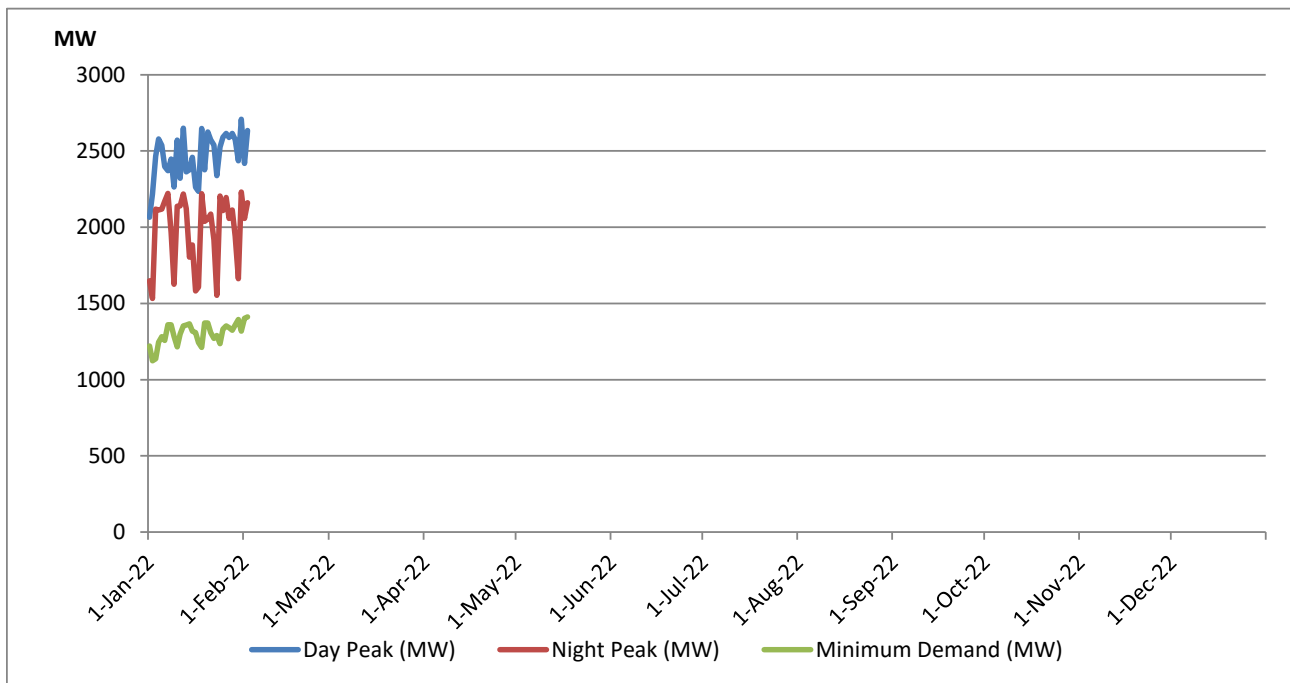


Data for 2018 and 2019 are only available for part of year.

Variation of Major Hydro Reservoir Levels in the current year (GWh)



Variation of Demand during the current year

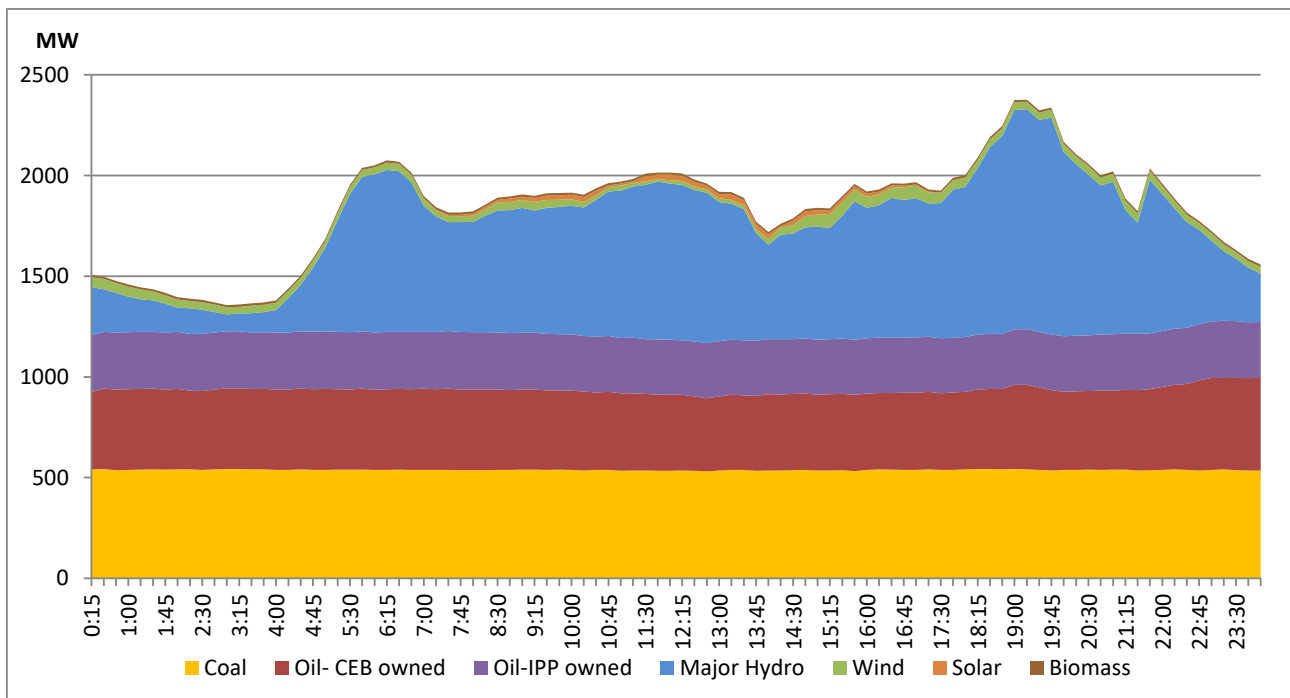


The above figures are excluding contribution from Roof Top Solar, 1MW solar, certain Wind plants and Mini Hydro plants

Daily Load Curve of the Previous day

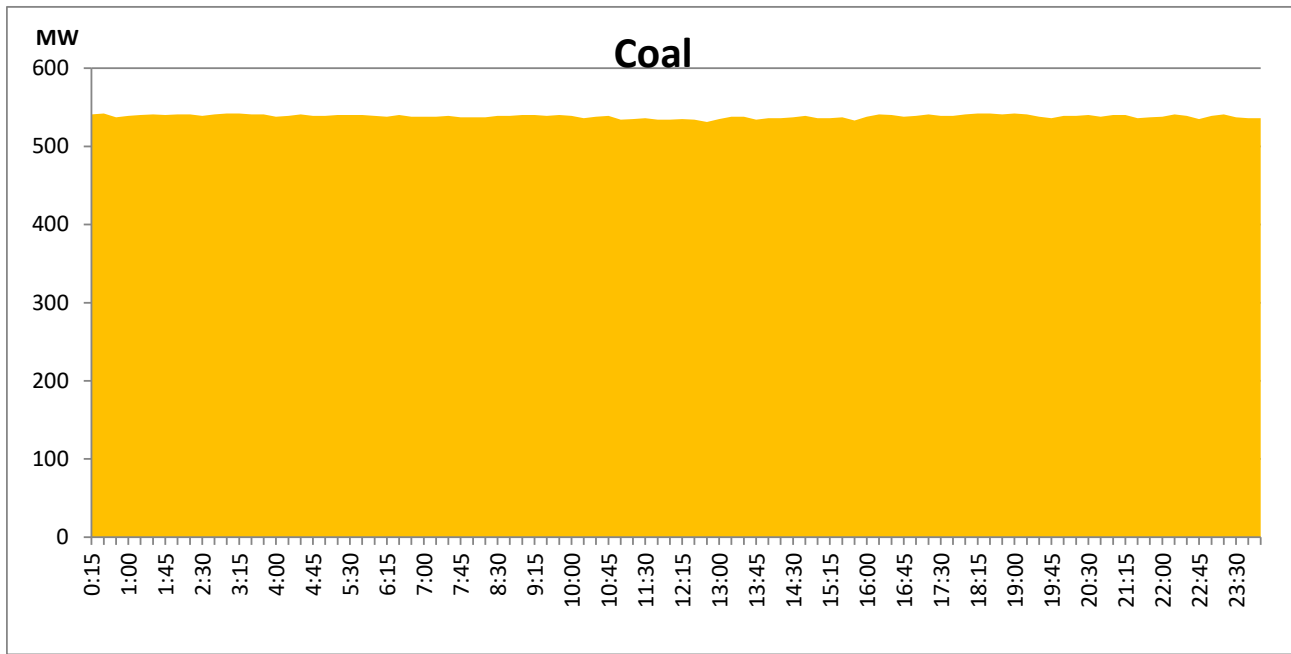
February 1, 2022

Solar and wind data is based on Telemetered Power Stations only



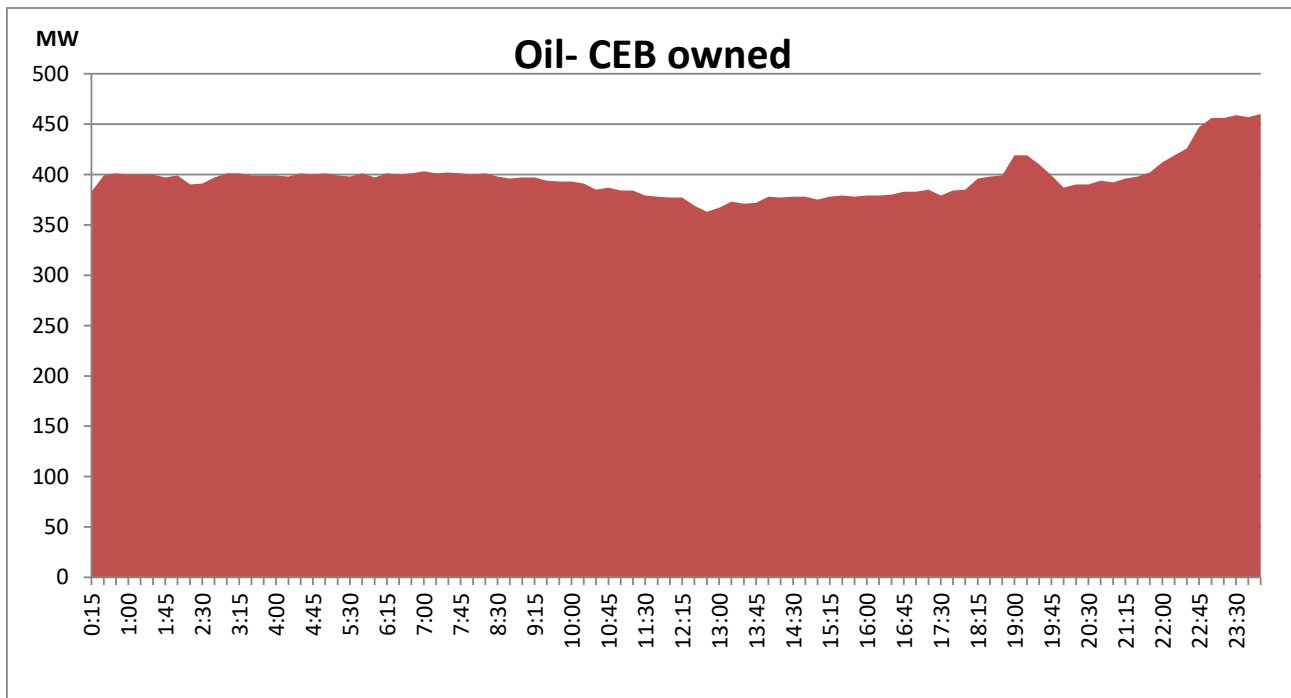
Coal Generation during the Previous day

February 1, 2022



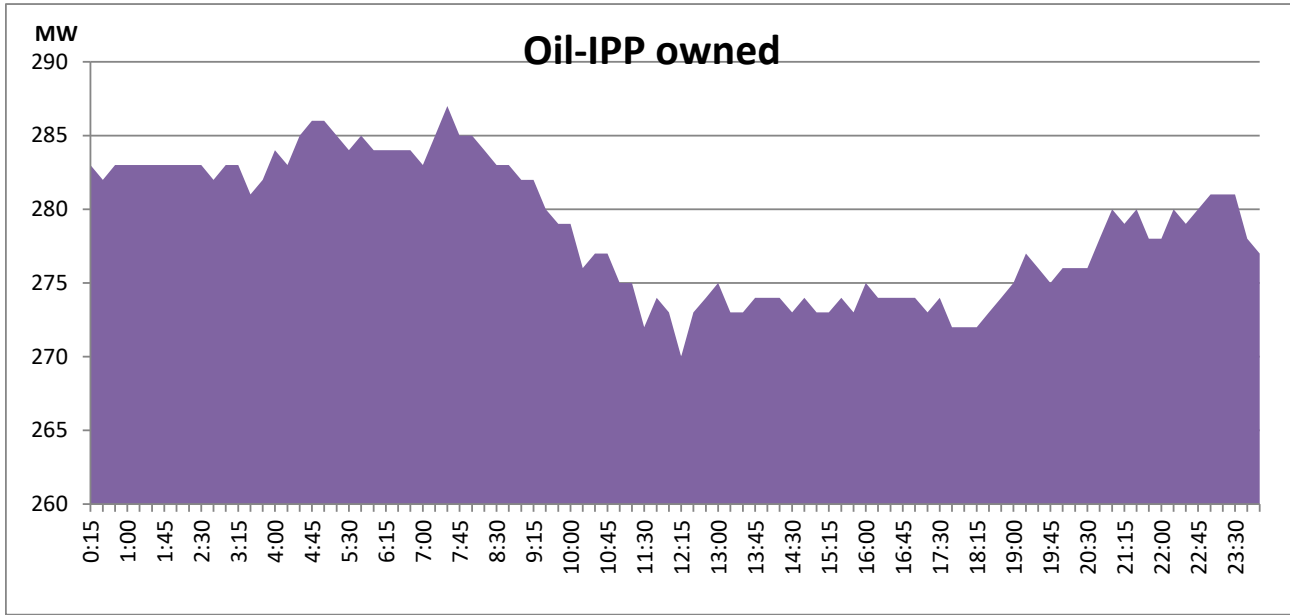
CEB Oil Plant Generation during the Previous day

February 1, 2022



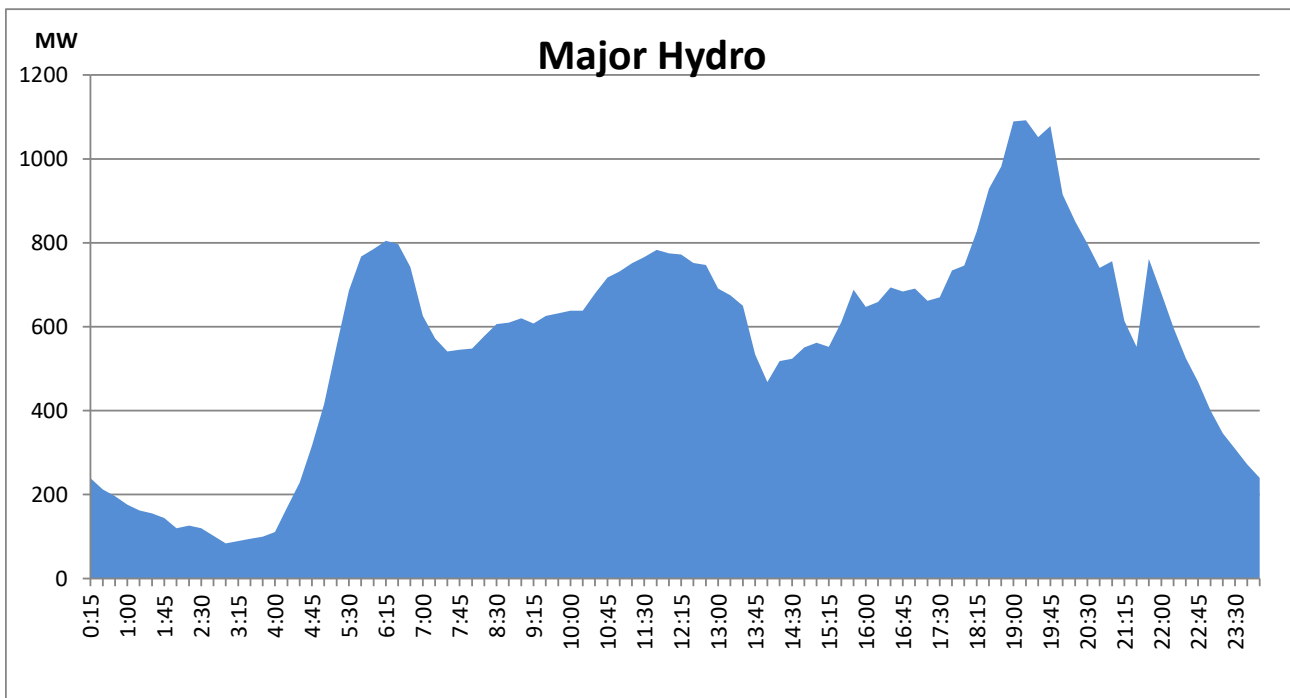
IPP Oil Plant Generation during the Previous day

February 1, 2022



Major Hydro Generation during the Previous day

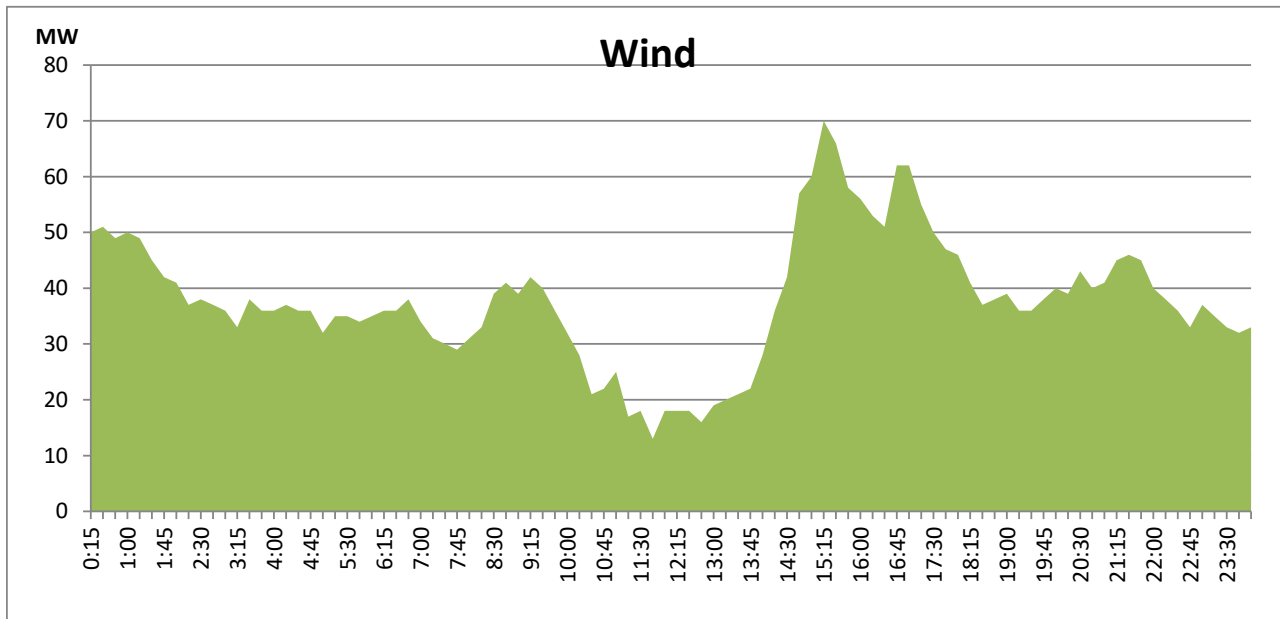
February 1, 2022



Wind Generation during the Previous day

February 1, 2022

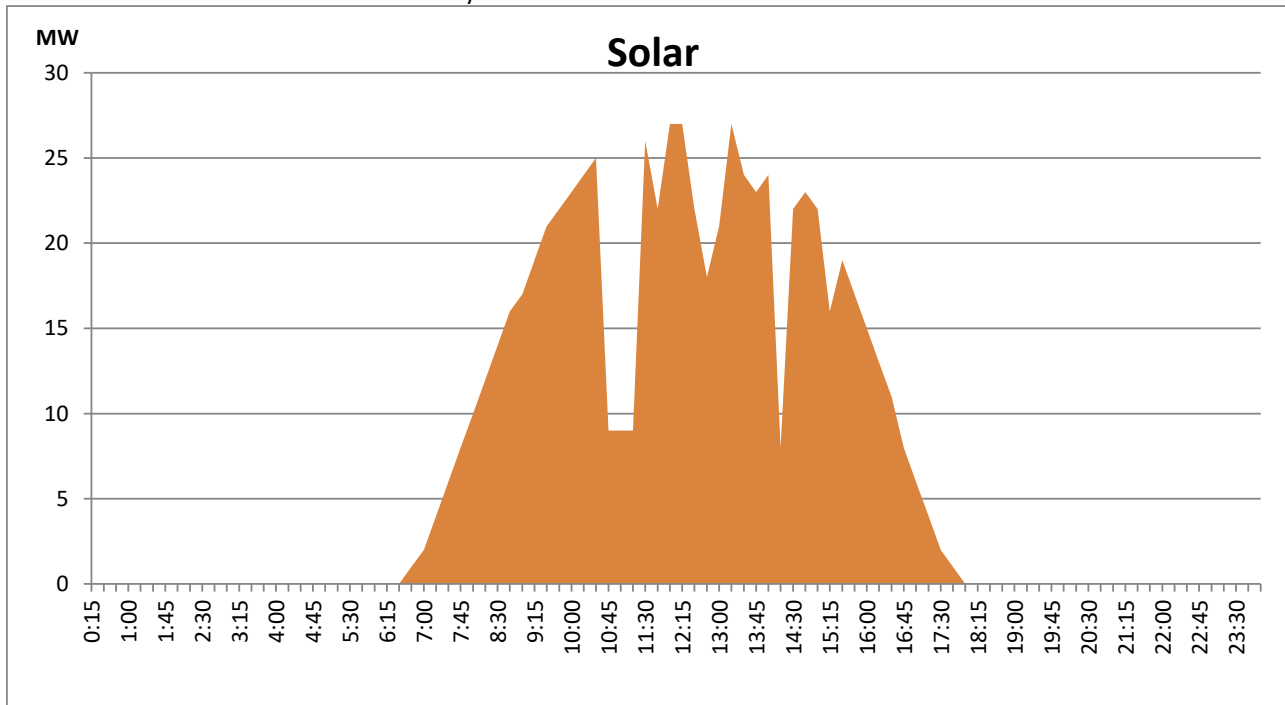
Based on Telemetered Power Stations only



Solar Generation during the Previous day

February 1, 2022

Based on Telemetered Power Stations only



Thermal Plant Fuel types

Power Station	Primary Fuel
CEB Thermal	
Sapugaskanda 1	Heavy Fuel
Sapugaskanda 2	Heavy Fuel
Kelanitissa Small Gas Turbines	Auto Diesel
GT 7 - Kelanitissa	Auto Diesel
Kelanitissa CCY	Naptha & Diesel
Lakvijaya 1	Coal
Lakvijaya 2	Coal
Lakvijaya 3	Coal
Uthuru Janani	Heavy Fuel
Barge CEB	Furnace Oil

Power Station	Primary Fuel
Private Thermal	
Sojitz - Kelanitissa	Auto Diesel
West Coast	Low Sulphur Furnace oil

Major Incidents during the day -as reported by CEB morning of

February 3, 2022

2) KCCP, KPS GT-07 and KPS GT-02 stopped at 20:03hrs, 20:28hrs and 20:42hrs respectively, due to the lack of fuel stocks.