

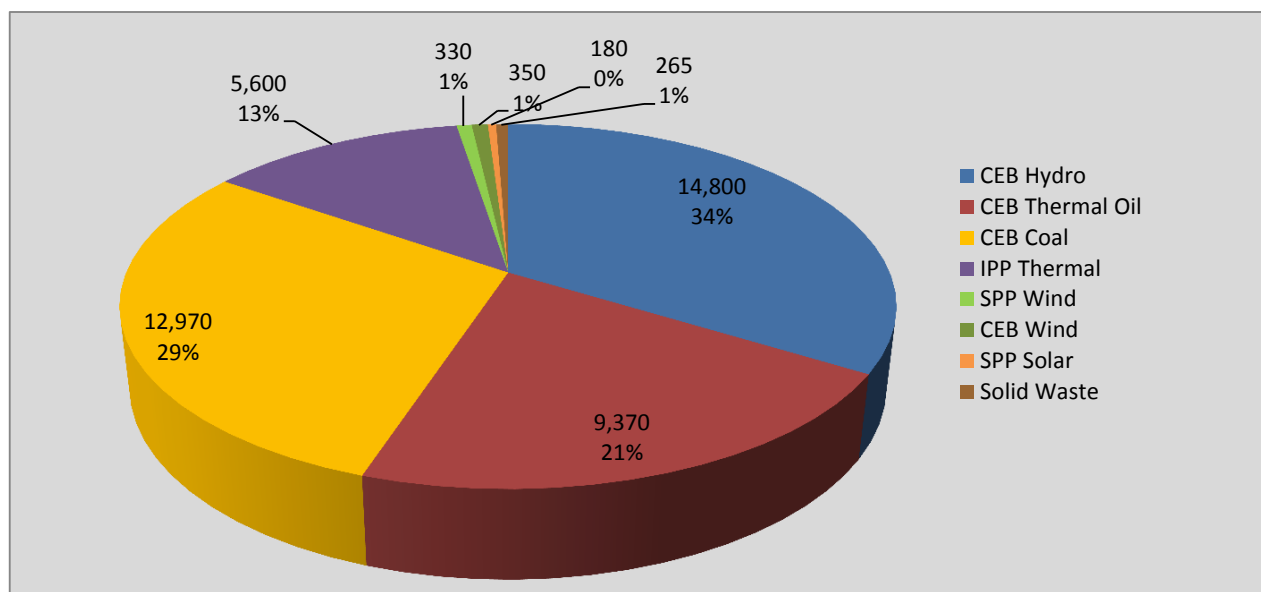
Generation and Reservoirs Statistics

January 10, 2022



PUBLIC UTILITIES COMMISSION OF SRI LANKA

Daily Generation Mix in MWh



Total Generation **43,852 MWh**

Note: Above data is Excluding contribution from Roof Top Solar, 1MW solar and Mini Hydro plants

Cumulative Dispatch

Note: Following data is Excluding contribution from Roof Top Solar, 1MW solar and Mini Hydro plants

For Current Month

Category	Dispatch (GWh)	
CEB Hydro	141.2	34.21%
CEB Thermal Oil	65.0	15.75%
CEB Coal	130.0	31.48%
IPP Thermal	56.8	13.75%
SPP Wind	6.9	1.66%
CEB Wind	8.4	2.03%
SPP Solar	2.1	0.51%
SPP Solid Waste	2.5	0.61%
Total	412.9	

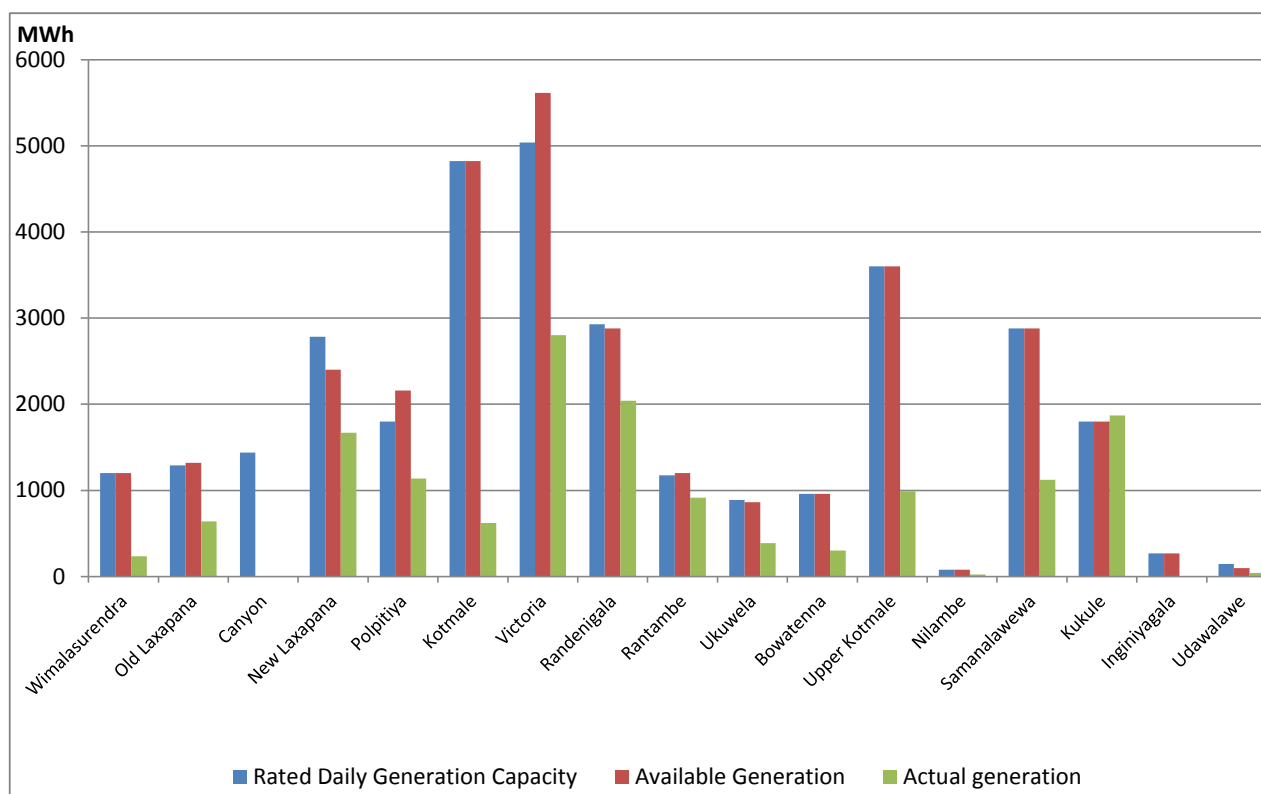
For Current Year

Category	Dispatch (GWh)	
CEB Hydro	141.2	34.21%
CEB Thermal Oil	65.0	15.75%
CEB Coal	130.0	31.48%
IPP Thermal	56.8	13.75%
SPP Wind	6.9	1.66%
CEB Wind	8.4	2.03%
SPP Solar	2.1	0.51%
SPP Waste Heat	2.5	0.61%
Total	412.9	

January 11, 2022

Major Hydro Plant Dispatch

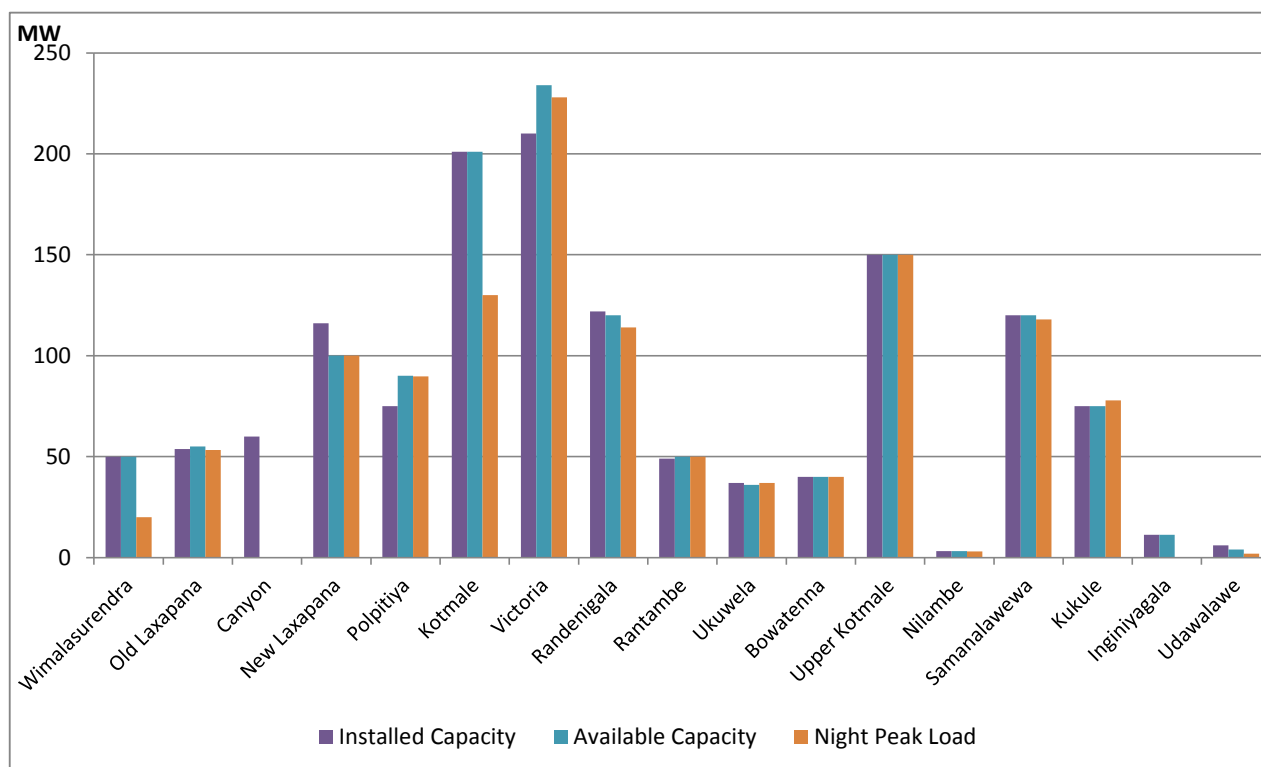
January 10, 2022



Note- Available Generation is estimated based on plant availability at 6.00am on January 11, 2022

Major Hydro Plant Loading at Night Peak

January 10, 2022



Note- Plant availability is recorded at 6.00 am on January 11, 2022

Summary of Major Plant performance

Plant	Installed Capacity	Plant Availability	Night peak Load	Dispatch
	(MW)	(MW)	(MW)	(GWh)
Wimalasurendra	50.00	50.00	20.00	234.00
Old Laxapana	53.80	55.00	53.30	639.00
Canyon	60.00	-	-	-
New Laxapana	116.00	100.00	100.00	1,668.00
Polpitiya	75.00	90.00	89.70	1,137.00
Kotmale	201.00	201.00	130.00	620.00
Victoria	210.00	234.00	228.00	2,801.00
Randenigala	122.00	120.00	114.00	2,042.00
Rantambe	49.00	50.00	50.00	914.00
Ukuwela	37.00	36.00	37.00	386.00
Bowatenna	40.00	40.00	40.00	301.00
Upper Kotmale	150.00	150.00	150.00	988.00
Nilambe	3.20	3.20	3.00	23.00
Samanalawewa	120.00	120.00	118.00	1,124.00
Kukule	75.00	75.00	77.90	1,868.00
Inginiyagala	11.25	11.25	-	-
Udawalawe	6.00	4.00	2.00	43.00
Puttalam Coal I	275.00	270.00	272.00	6,495.00
Puttalam Coal II	275.00	270.00	269.00	6,470.00
Puttalam Coal III	275.00	-	-	-
KPS Small GTs	65.20	16.00	16.00	184.00
KPS GT 7	113.00	115.00	113.00	1,513.00
KCCP	161.00	150.00	148.00	3,623.00
Sapugaskanda A	69.60	49.00	49.00	1,036.00
Sapugaskanda B	69.60	54.00	54.00	1,190.00
Uthura Janani	26.01	16.00	16.00	360.00
Barge CEB	60.00	45.00	45.00	936.00
CEB-Thulhiriya	10.00	7.70	8.00	136.00
CEB-Kolonnawa	20.00	14.10	16.00	225.00
CEB-Mathugama	20.00	13.00	15.00	168.00
Sojitz Kelanitissa	163.00	130.00	128.00	3,026.00
Westcoast	270.00	130.00	139.00	2,574.00
Vpower-Valach.	24.00	-	-	-
Solar	68.00		-	178.00
Wind	248.00		19.70	682.00
MH and BM	441.00		40.30	Not available
Total without NCRE	3,538.46	2,619.25		

Night peak load of MH and BM only include loading of Minihydro plants of total capacity MW

129

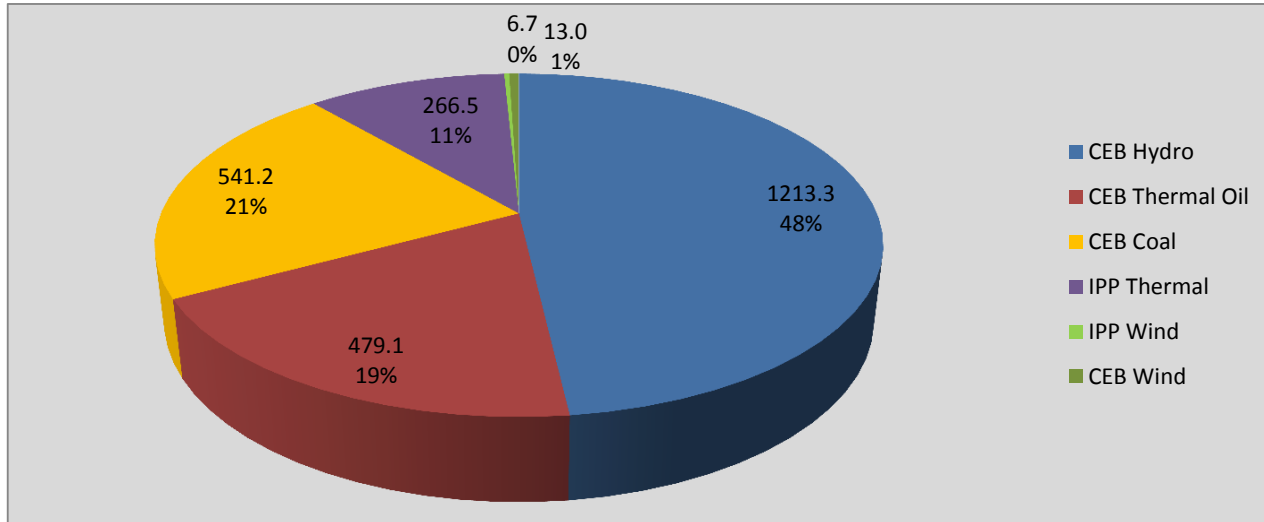
Installed capacity of Solar, wind, Mini-hydro and Biomass plants are as of end of December 2019

Plant availability is the availability recorded at 6 am on

January 11, 2022

Contribution to the Night Peak in MW

January 10, 2022



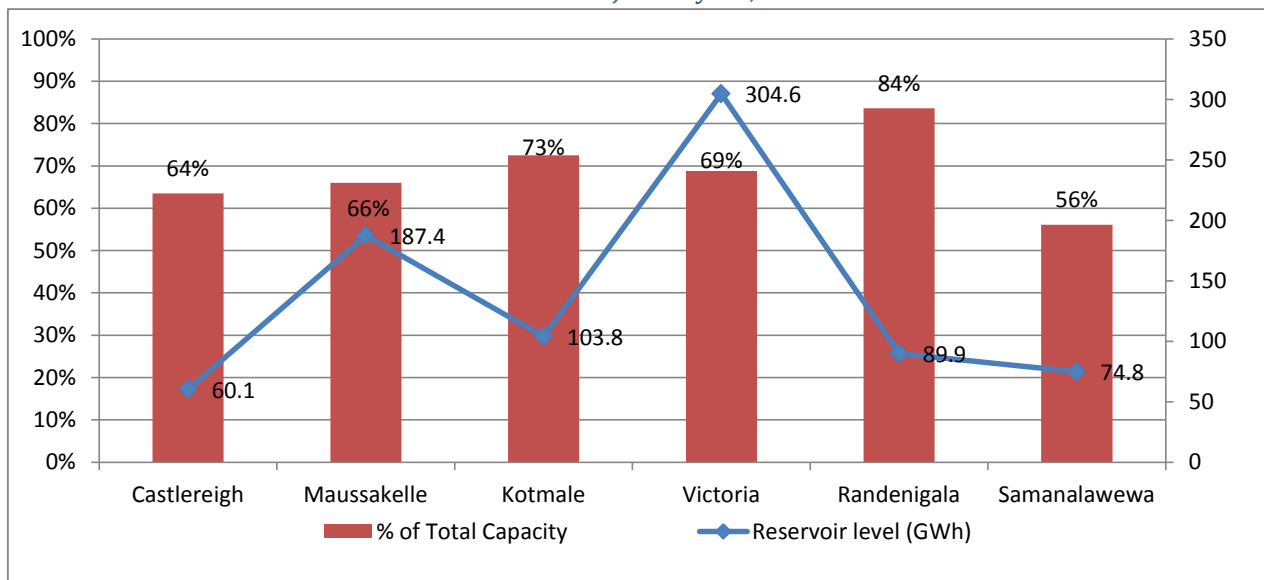
Night Peak*	2,519.8 MW
Day Peak	2,137.6 MW
Minimum Demand	1,215.8 MW

Above figures are excluding contribution from Roof Top Solar, 1MW solar, certain Wind plants and Mini Hydro plants

* in addition to the night peak figure presented above, Kerawalapitiya solid waste plant and 26 no. of MiniHydro Plants has contributed 51.30 MW to the night peak

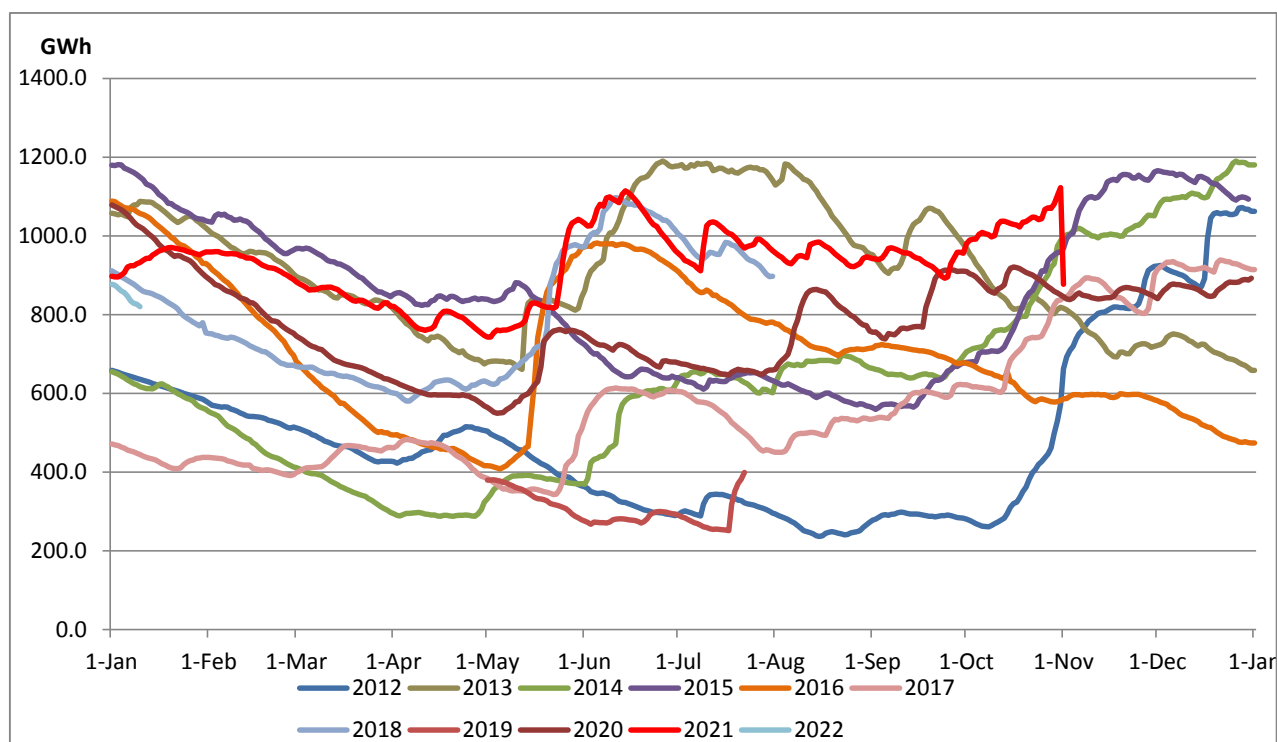
Reservoir Levels -

as at 06.00 Hr on January 11, 2022



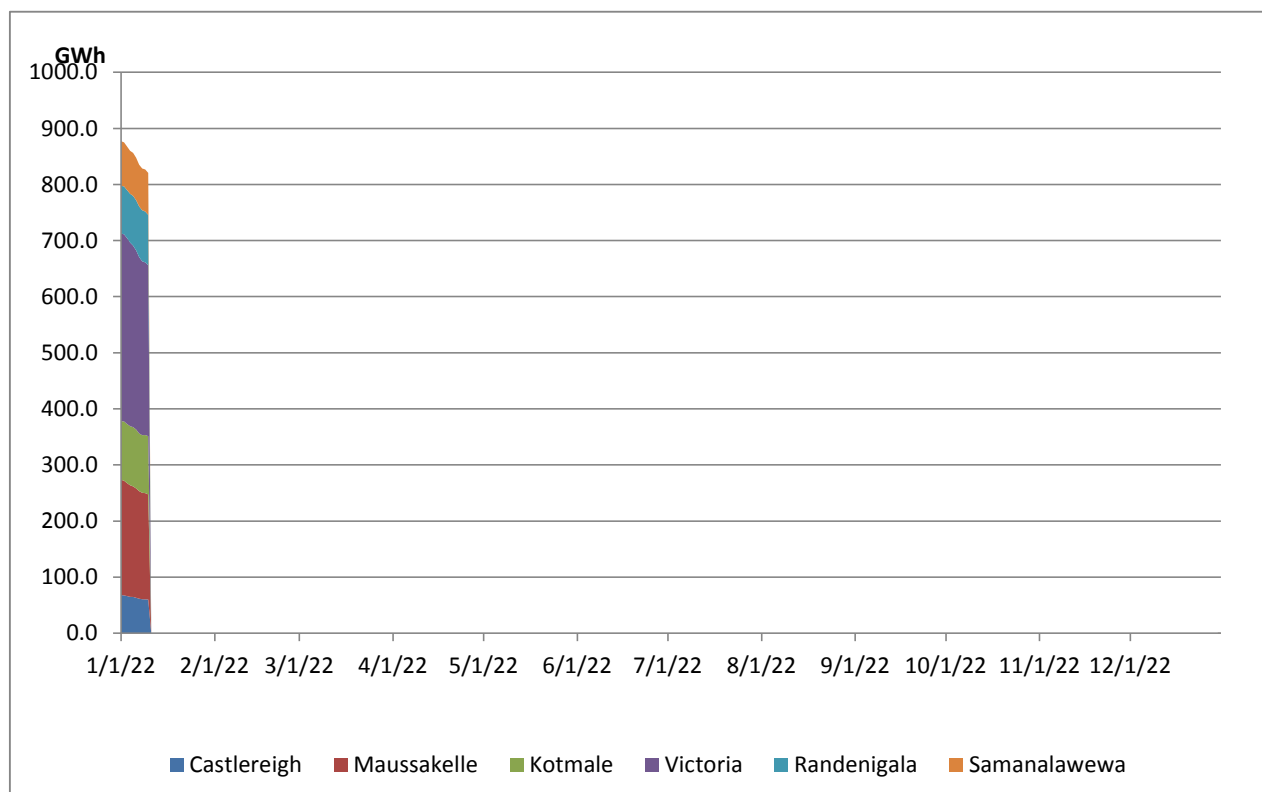
Total Reservoir Level(GWh)	820.6
% of Total capacity	0.0%

Comparison of Total Reservoir Storage Levels with Past Years

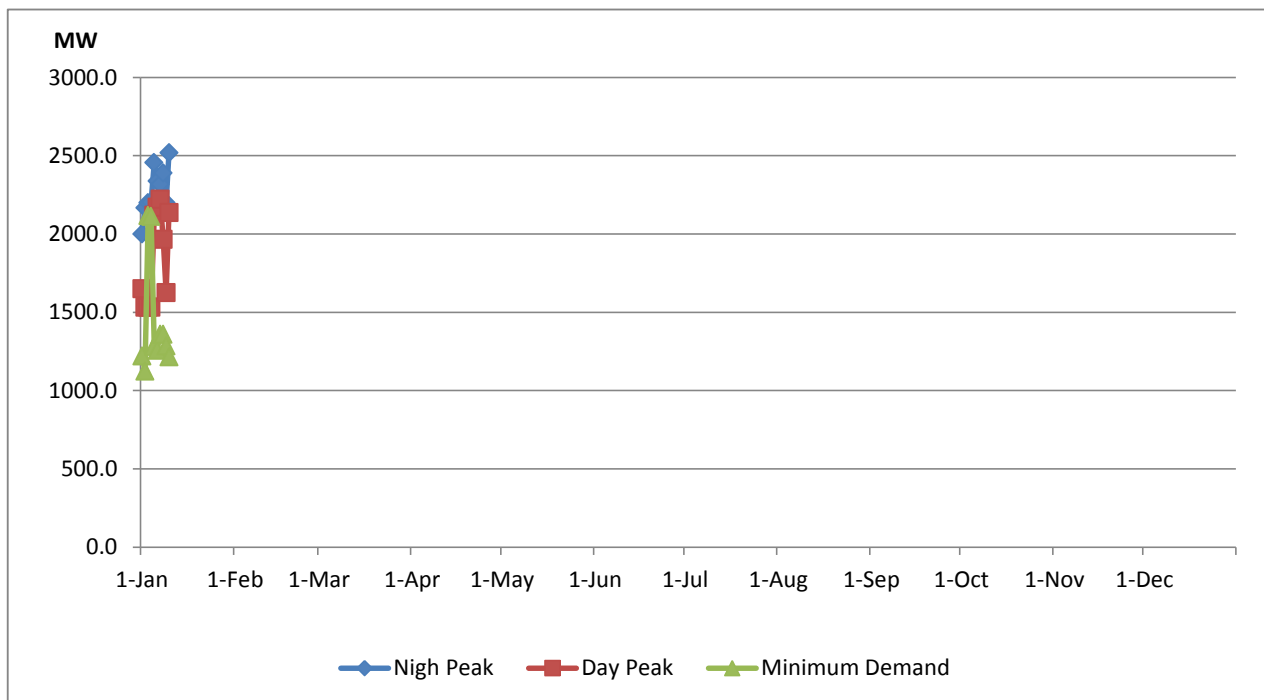


Data for 2018 and 2019 are only available for part of year.

Variation of Major Hydro Reservoir Levels in the current year (GWh)



Variation of Demand during the current year

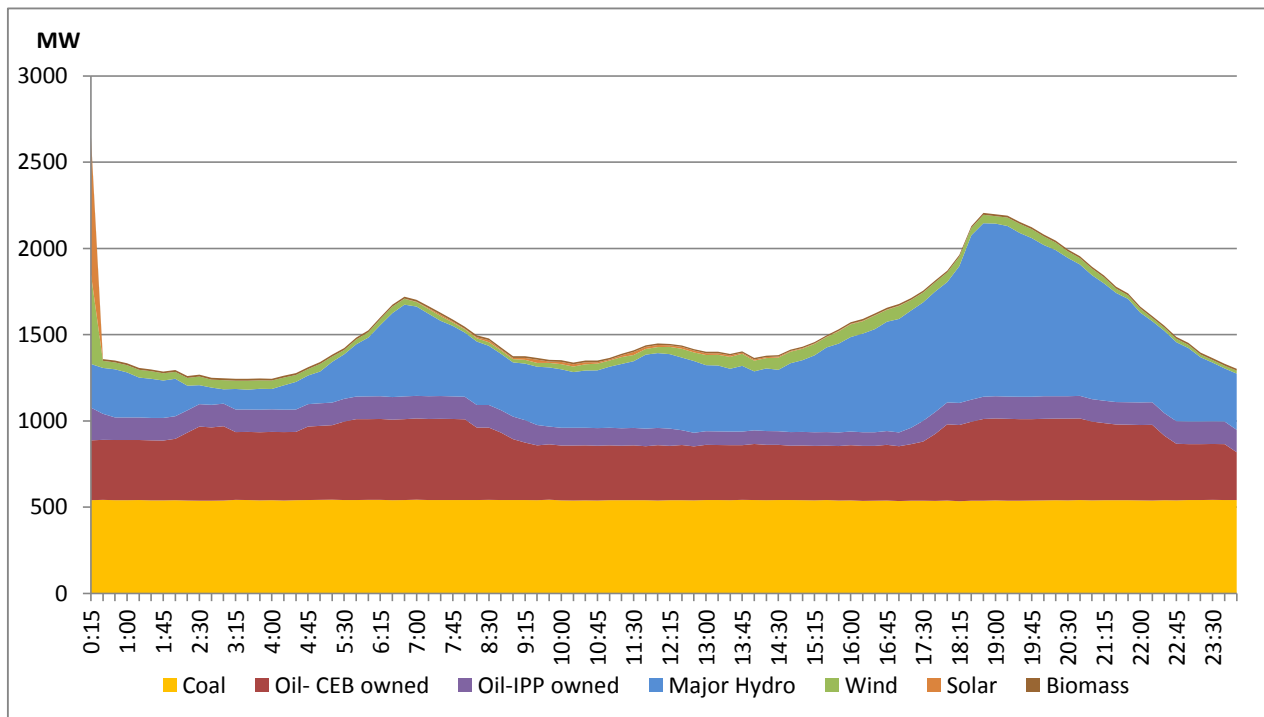


as: The above figures are excluding contribution from Roof Top Solar, 1MW solar, certain Wind plants and Mini Hydro plants

Daily Load Curve of the Previous day

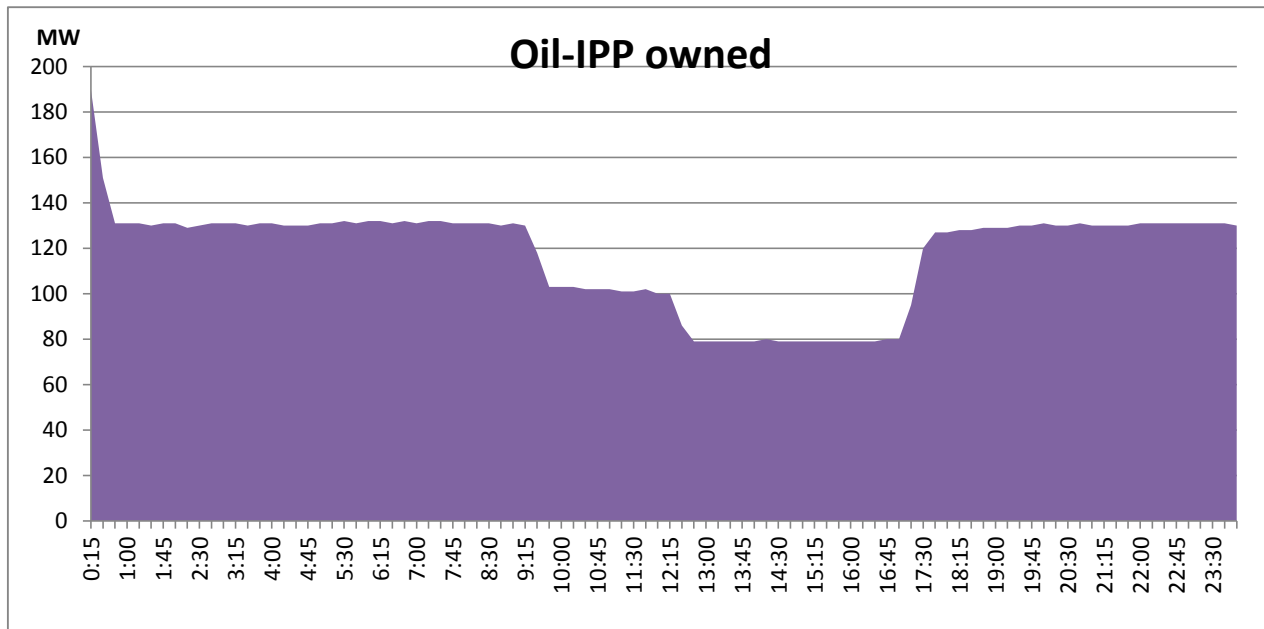
January 9, 2022

Solar and wind data is based on Telemetered Power Stations only



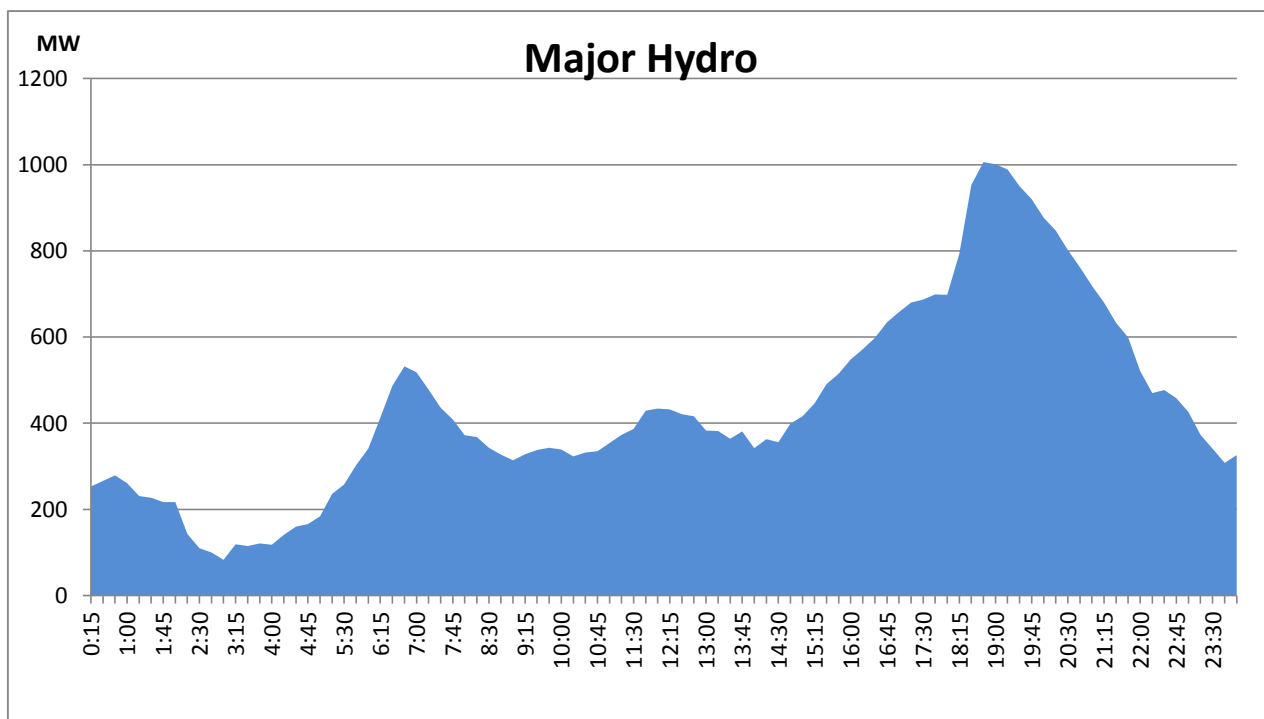
IPP Oil Plant Generation during the Previous day

January 9, 2022



Major Hydro Generation during the Previous day

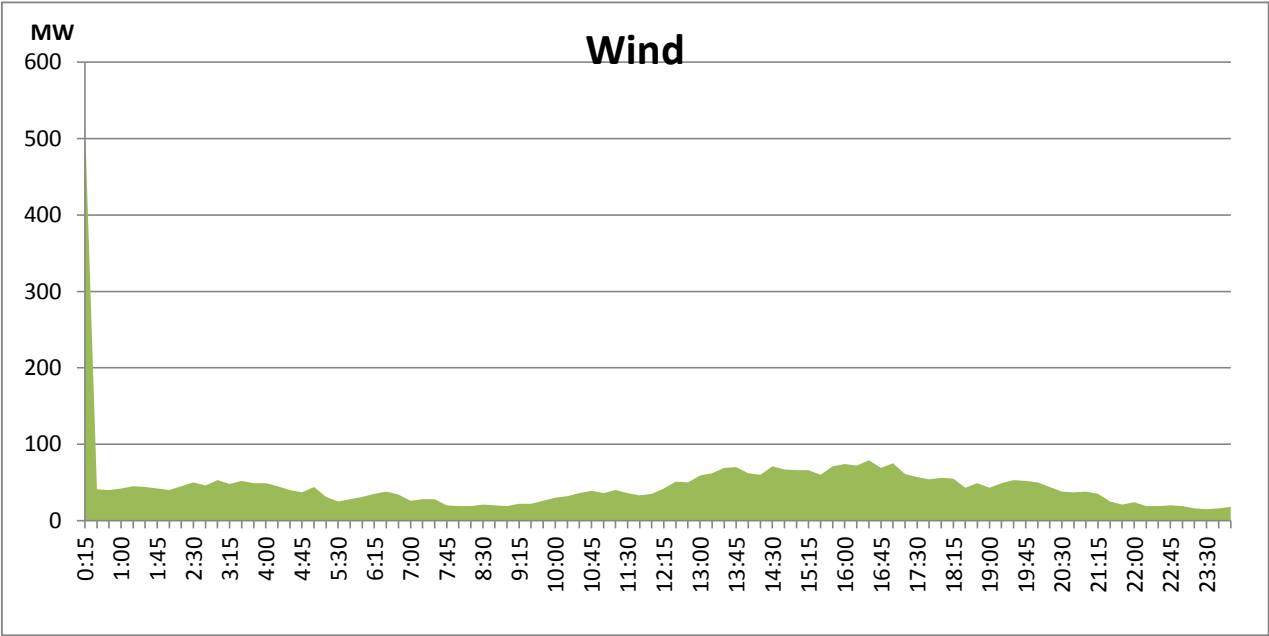
January 9, 2022



Wind Generation during the Previous day

January 9, 2022

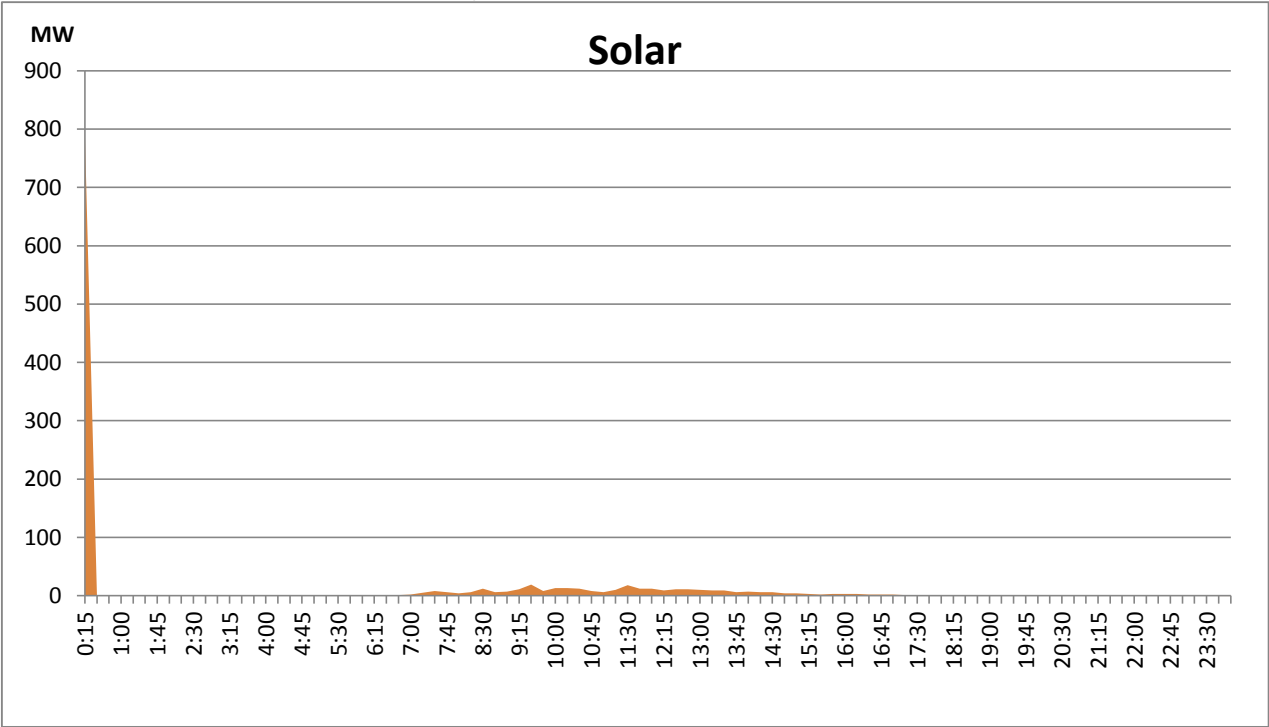
Based on Telemetered Power Stations only



Solar Generation during the Previous day

January 9, 2022

Based on Telemetered Power Stations only



Thermal Plant Fuel types

Power Station	Primary Fuel
CEB Thermal	
Sapugaskanda 1	Heavy Fuel
Sapugaskanda 2	Heavy Fuel
Kelanitissa Small Gas Turbines	Auto Diesel
GT 7 - Kelanitissa	Auto Diesel
Kelanitissa CCY	Naptha & Diesel
Lakvijaya 1	Coal
Lakvijaya 2	Coal
Lakvijaya 3	Coal
Uthuru Janani	Heavy Fuel
Barge CEB	Furnace Oil

Power Station	Primary Fuel
Private Thermal	
Sojitz - Kelanitissa	Auto Diesel
West Coast	Low Sulphur Furnace oil

Major Incidents during the day -as reported by CEB morning of

1) Kukule spilling stopped at 13:40hrs.

January 11, 2022