

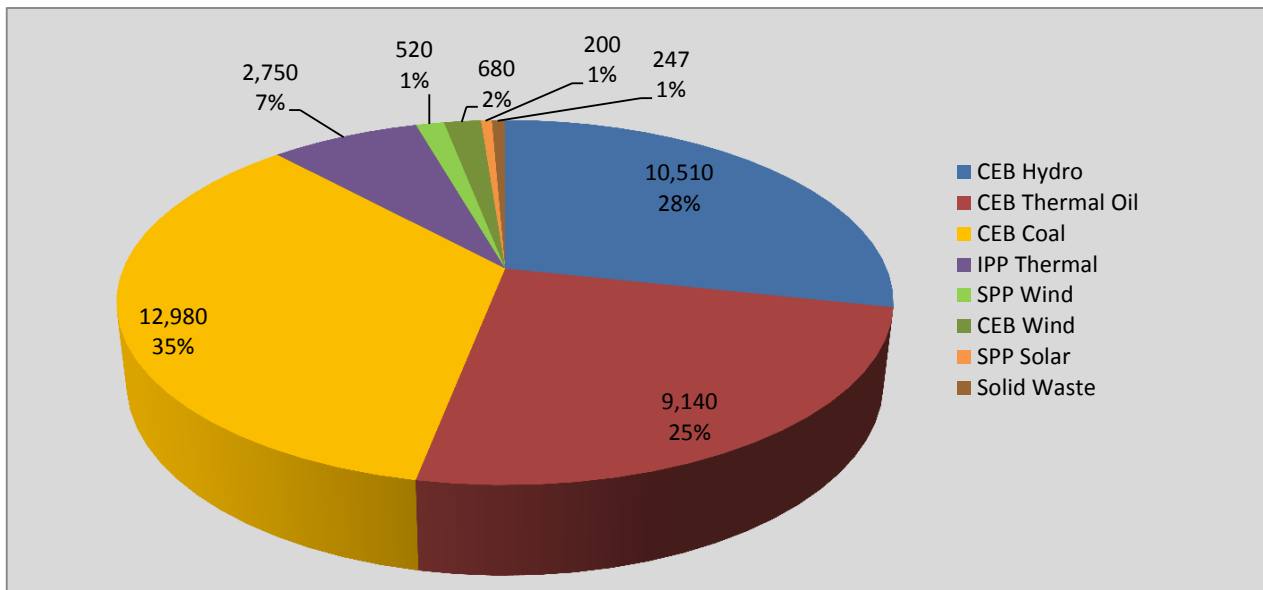
Generation and Reservoirs Statistics

January 9, 2022



PUBLIC UTILITIES COMMISSION OF SRI LANKA

Daily Generation Mix in MWh



Total Generation **37,026 MWh**

Note: Above data is Excluding contribution from Roof Top Solar, 1MW solar and Mini Hydro plants

Cumulative Dispatch

Note: Following data is Excluding contribution from Roof Top Solar, 1MW solar and Mini Hydro plants

For Current Month

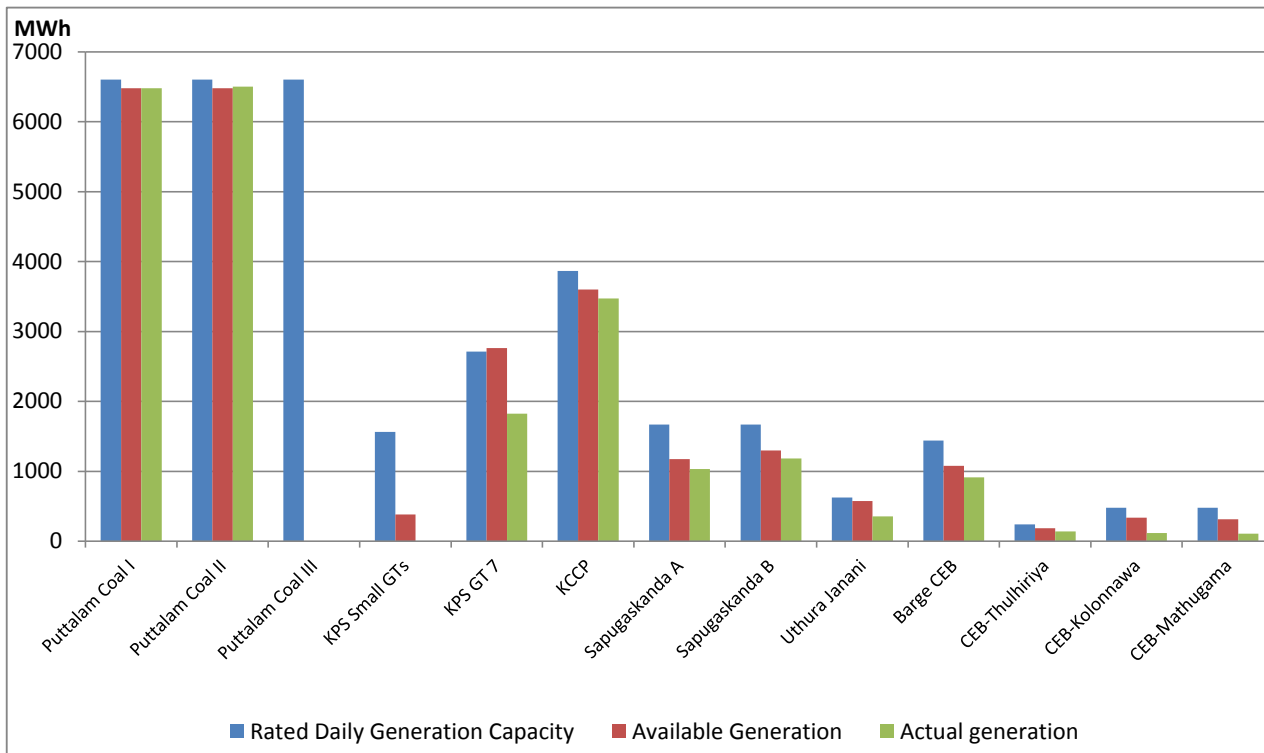
| Category | Dispatch (GWh) | Percentage |
|-----------------|----------------|------------|
| CEB Hydro | 126.4 | 34.27% |
| CEB Thermal Oil | 55.7 | 15.08% |
| CEB Coal | 117.0 | 31.71% |
| IPP Thermal | 51.2 | 13.87% |
| SPP Wind | 6.5 | 1.77% |
| CEB Wind | 8.0 | 2.18% |
| SPP Solar | 1.9 | 0.52% |
| SPP Solid Waste | 2.2 | 0.61% |
| Total | 369.0 | |

For Current Year

| Category | Dispatch (GWh) | Percentage |
|-----------------|----------------|------------|
| CEB Hydro | 126.4 | 34.27% |
| CEB Thermal Oil | 55.7 | 15.08% |
| CEB Coal | 117.0 | 31.71% |
| IPP Thermal | 51.2 | 13.87% |
| SPP Wind | 6.5 | 1.77% |
| CEB Wind | 8.0 | 2.18% |
| SPP Solar | 1.9 | 0.52% |
| SPP Waste Heat | 2.2 | 0.61% |
| Total | 369.0 | |

CEB owned Thermal Plant Dispatch

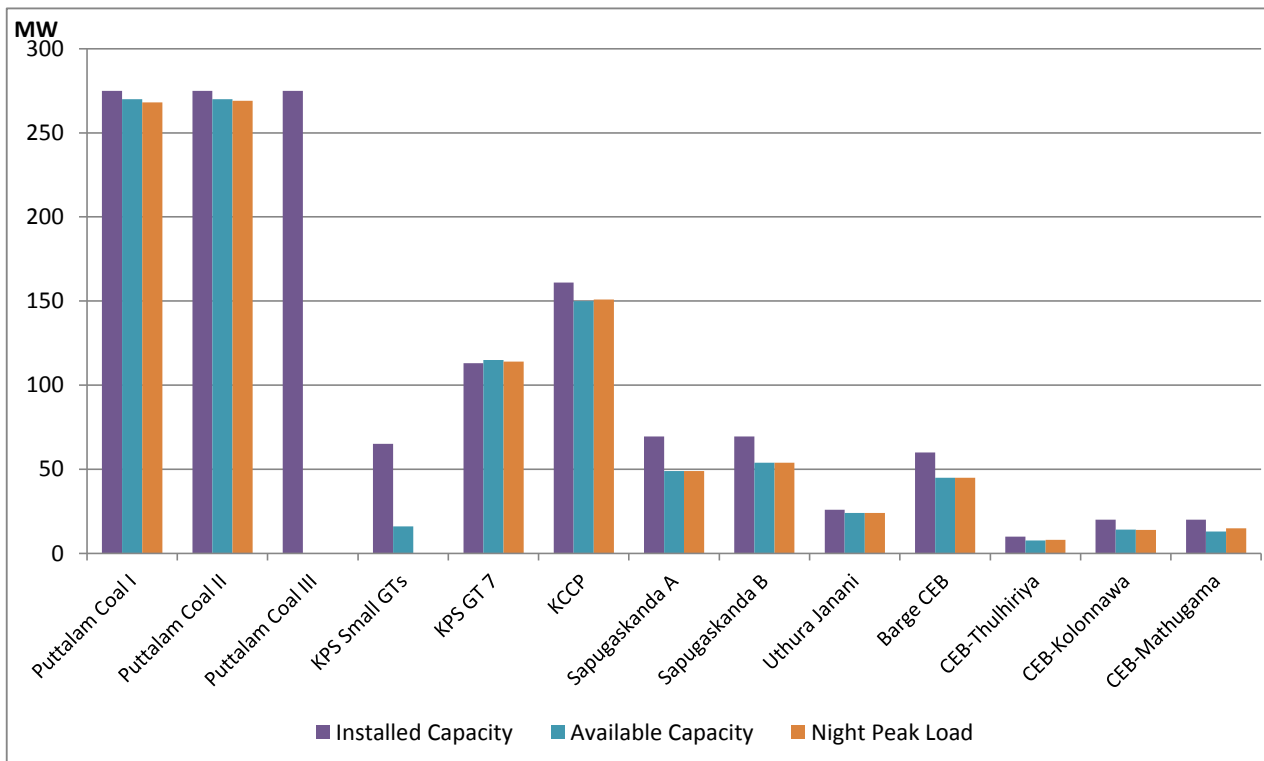
January 9, 2022



Available Generation is estimated based on plant availability at 6.00am on

January 10, 2022

CEB owned Thermal Plant Loading at the Night Peak



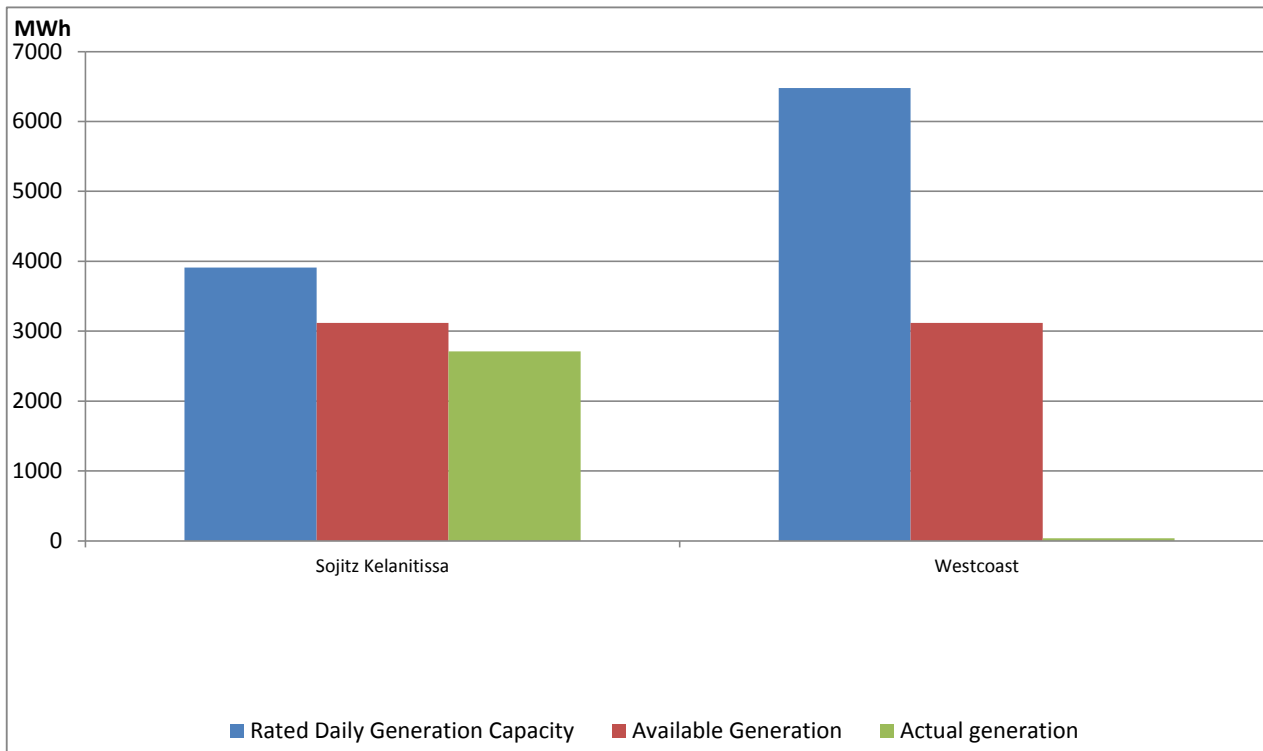
Note- Plant availability is recorded at 6.00 am on

January 10, 2022

IPP owned Thermal Plant Dispatch

January 9, 2022

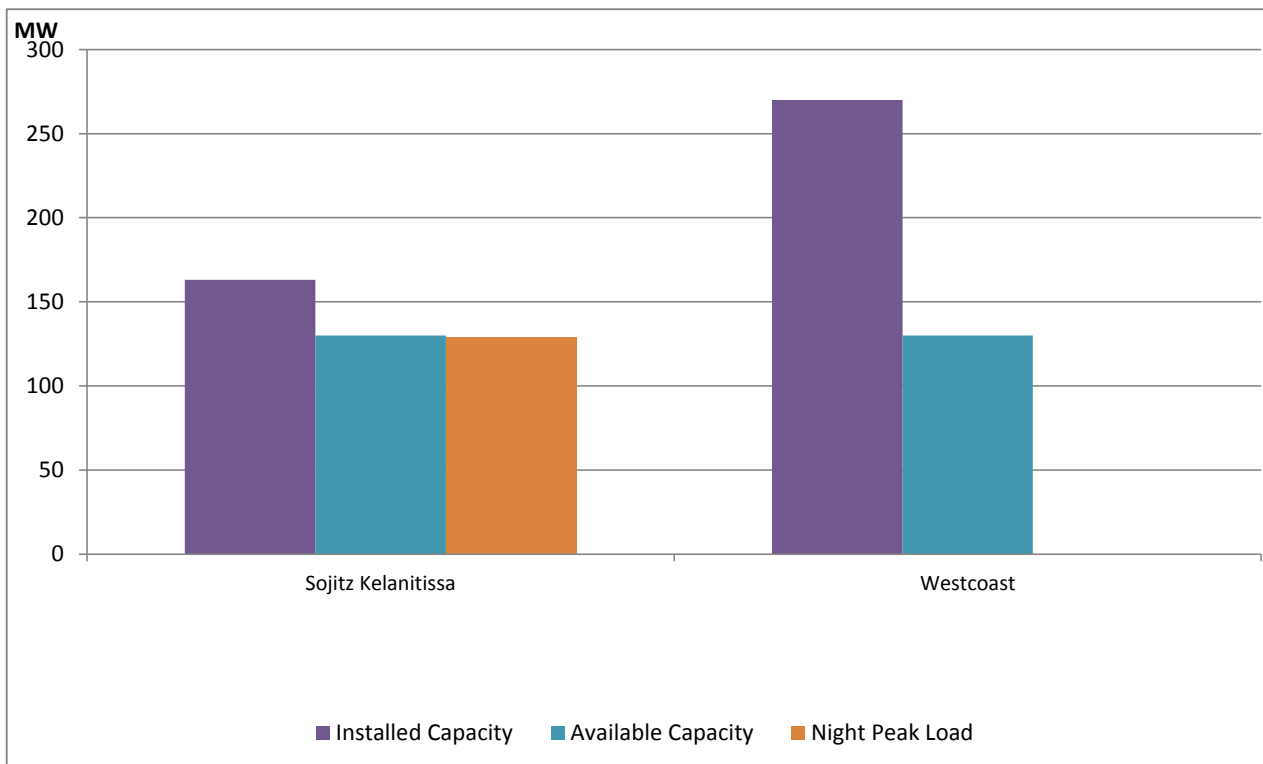
ACE Embilipitiya, ACE Matara, Asia Power, V Power Pallekale, Vpower Galle, V Power Horana, Vpower Hambantota, Vpower Valachchena and Altaqa Mahiyanganaya are not available due to expiration of PPAs



Available Generation is estimated based on plant availability at 6.00am on

January 10, 2022

IPP owned Thermal Plant Loading at the Night Peak

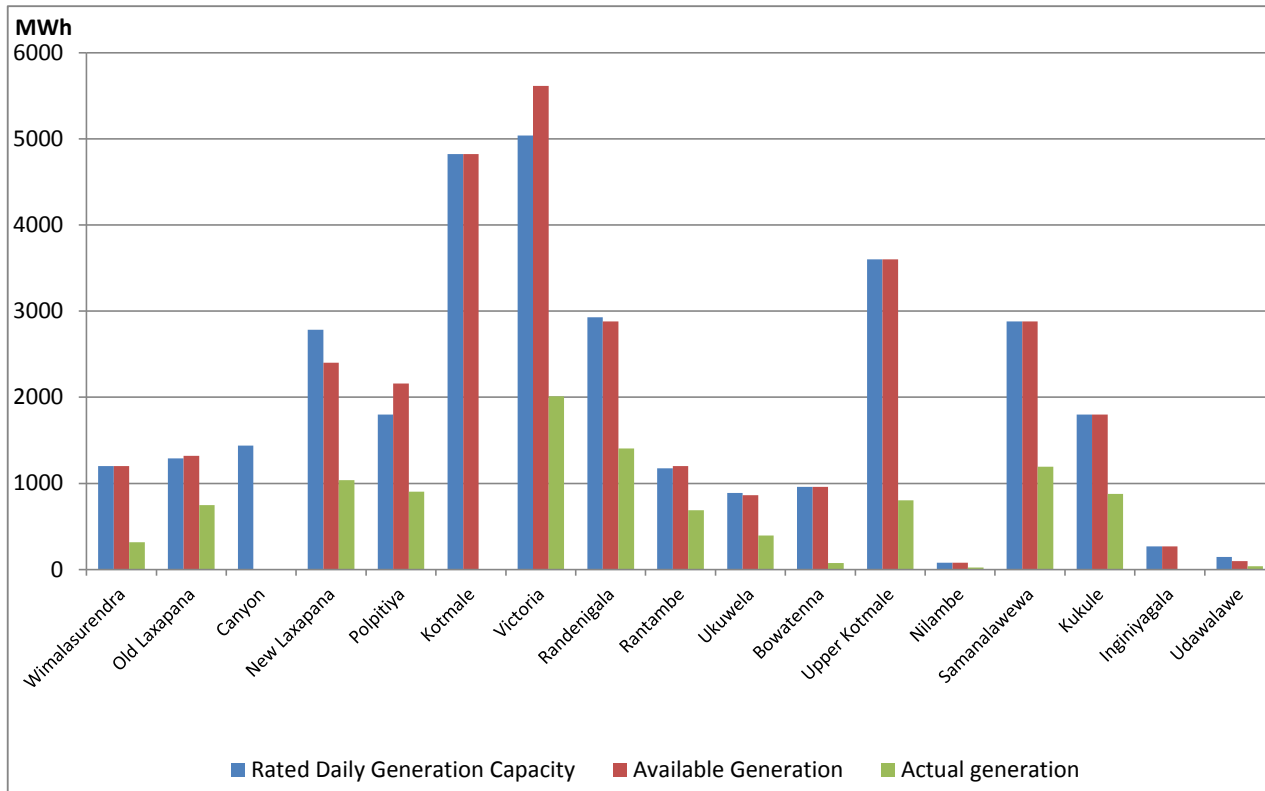


Note- Plant availability is recorded at 6.00 am on

January 10, 2022

Major Hydro Plant Dispatch

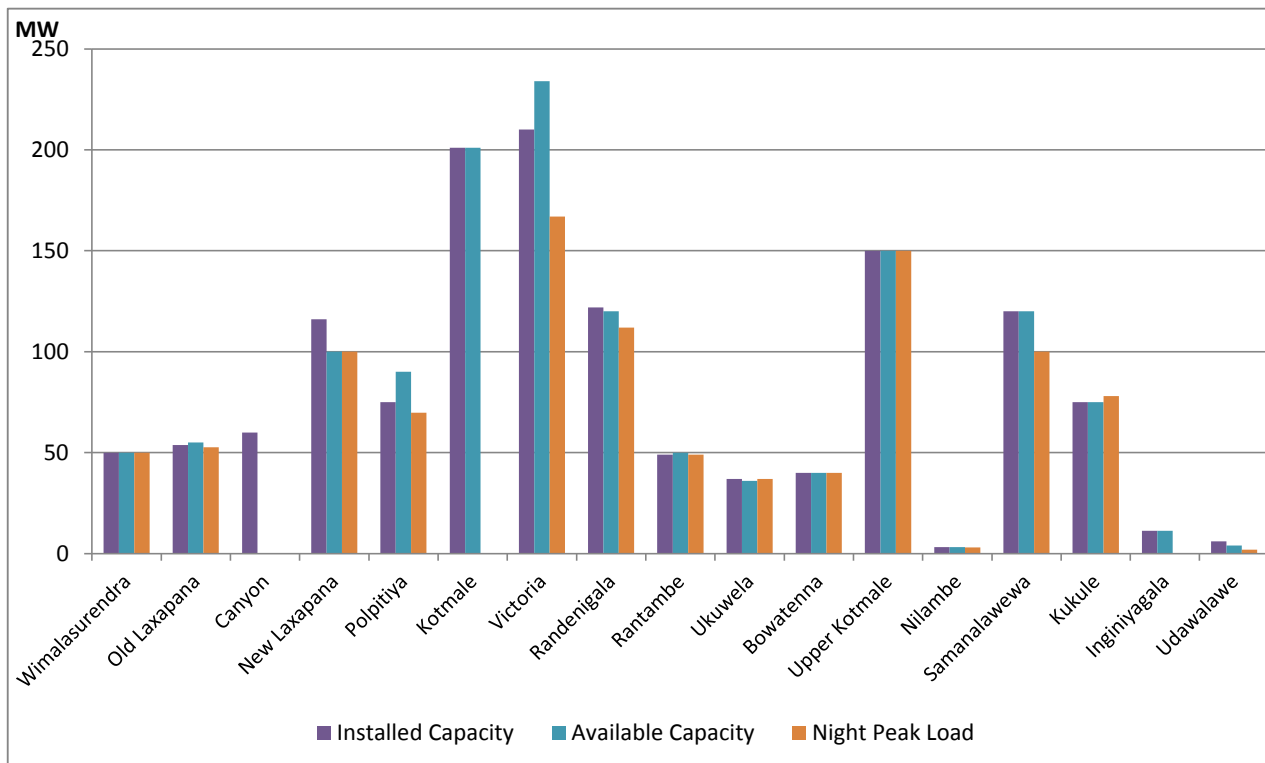
January 9, 2022



Note- Available Generation is estimated based on plant availability at 6.00am on January 10, 2022

Major Hydro Plant Loading at Night Peak

January 9, 2022



Note- Plant availability is recorded at 6.00 am on January 10, 2022

Summary of Major Plant performance

| Plant | Installed Capacity (MW) | Plant Availability (MW) | Night peak Load (MW) | Dispatch (GWh) |
|--------------------|----------------------------|----------------------------|-------------------------|-------------------|
| Wimalasurendra | 50.00 | 50.00 | 50.00 | 318.00 |
| Old Laxapana | 53.80 | 55.00 | 52.70 | 746.00 |
| Canyon | 60.00 | - | - | - |
| New Laxapana | 116.00 | 100.00 | 100.00 | 1,037.00 |
| Polpitiya | 75.00 | 90.00 | 69.80 | 903.00 |
| Kotmale | 201.00 | 201.00 | - | - |
| Victoria | 210.00 | 234.00 | 167.00 | 2,011.00 |
| Randenigala | 122.00 | 120.00 | 112.00 | 1,407.00 |
| Rantambe | 49.00 | 50.00 | 49.00 | 688.00 |
| Ukuwela | 37.00 | 36.00 | 37.00 | 393.00 |
| Bowatenna | 40.00 | 40.00 | 40.00 | 74.00 |
| Upper Kotmale | 150.00 | 150.00 | 150.00 | 803.00 |
| Nilambe | 3.20 | 3.20 | 3.00 | 22.00 |
| Samanalawewa | 120.00 | 120.00 | 100.00 | 1,192.00 |
| Kukule | 75.00 | 75.00 | 78.00 | 878.00 |
| Inginiyagala | 11.25 | 11.25 | - | - |
| Udawalawe | 6.00 | 4.00 | 2.00 | 38.00 |
| Puttalam Coal I | 275.00 | 270.00 | 268.00 | 6,480.00 |
| Puttalam Coal II | 275.00 | 270.00 | 269.00 | 6,500.00 |
| Puttalam Coal III | 275.00 | - | - | - |
| KPS Small GTs | 65.20 | 16.00 | - | - |
| KPS GT 7 | 113.00 | 115.00 | 114.00 | 1,824.00 |
| KCCP | 161.00 | 150.00 | 151.00 | 3,473.00 |
| Sapugaskanda A | 69.60 | 49.00 | 49.00 | 1,033.00 |
| Sapugaskanda B | 69.60 | 54.00 | 54.00 | 1,181.00 |
| Uthura Janani | 26.01 | 24.00 | 24.00 | 355.00 |
| Barge CEB | 60.00 | 45.00 | 45.00 | 914.00 |
| CEB-Thulhiriya | 10.00 | 7.70 | 8.00 | 141.00 |
| CEB-Kolonnawa | 20.00 | 14.10 | 14.00 | 118.00 |
| CEB-Mathugama | 20.00 | 13.00 | 15.00 | 106.00 |
| Sojitz Kelanitissa | 163.00 | 130.00 | 129.00 | 2,711.00 |
| Westcoast | 270.00 | 130.00 | - | 37.00 |
| Vpower-Valach. | 24.00 | - | - | - |
| Solar | 68.00 | | - | 203.00 |
| Wind | 248.00 | | 48.50 | 1,198.00 |
| MH and BM | 441.00 | | 52.00 | Not available |
| Total without NCRE | 3,538.46 | 2,627.25 | | |

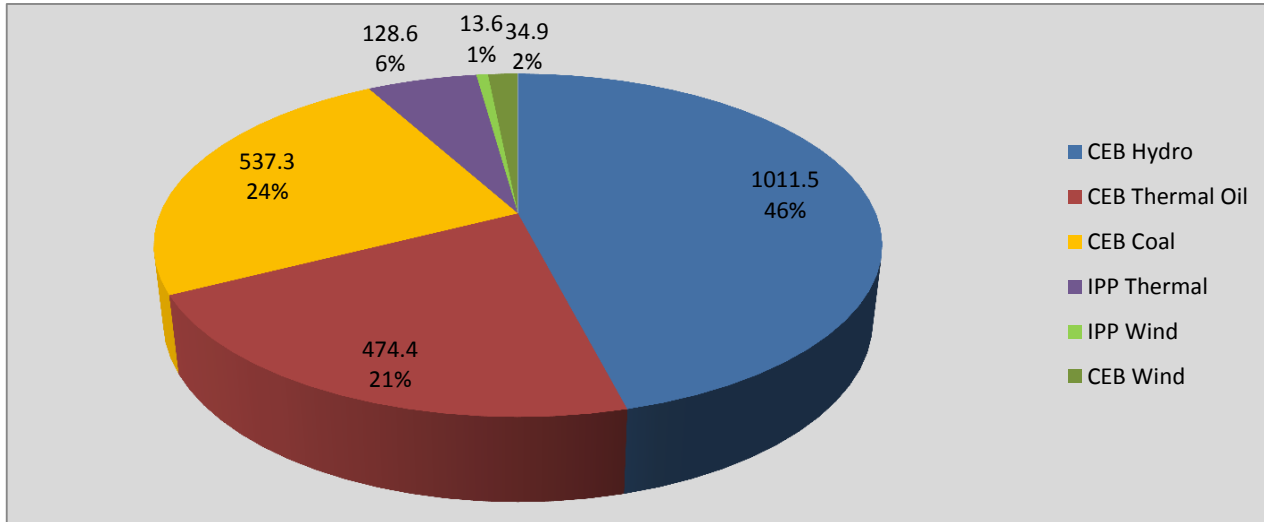
Night peak load of MH and BM only include loading of Minihydro plants of total capacity MW 129

Installed capacity of Solar, wind, Mini-hydro and Biomass plants are as of end of December 2019

Plant availability is the availability recorded at 6 am on January 10, 2022

Contribution to the Night Peak in MW

January 9, 2022

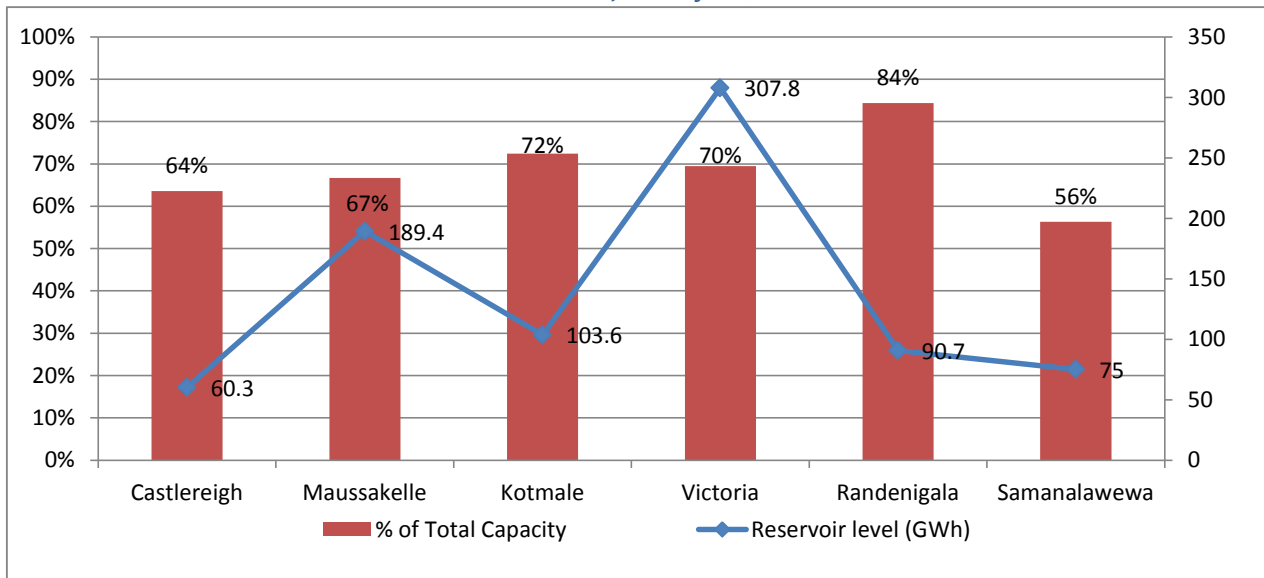


| | |
|----------------|------------|
| Night Peak* | 2,200.3 MW |
| Day Peak | 1,625.8 MW |
| Minimum Demand | 1,284.5 MW |

Above figures are excluding contribution from Roof Top Solar, 1MW solar, certain Wind plants and Mini Hydro plants

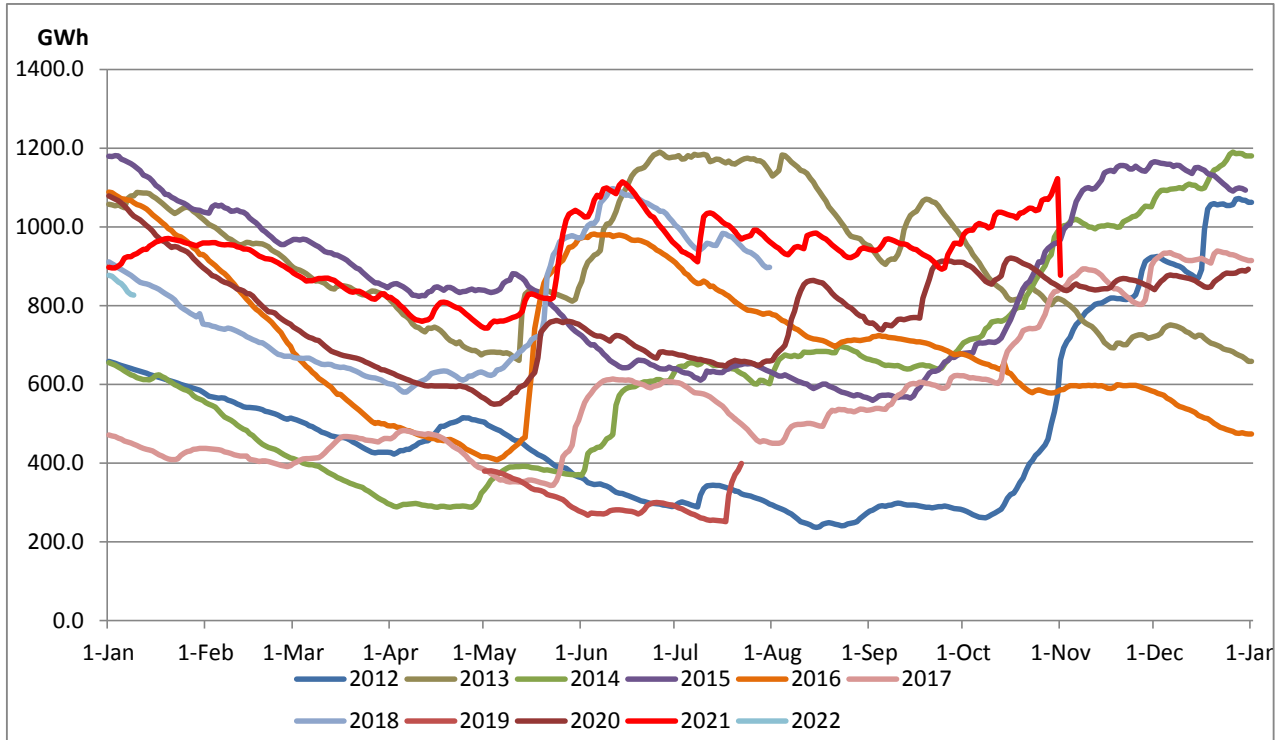
* in addition to the night peak figure presented above, Kerawalapitiya solid waste plant and 26 no. of MiniHydro Plants has contributed 62.80 MW to the night peak

Reservoir Levels - as at 06.00 Hr on January 10, 2022



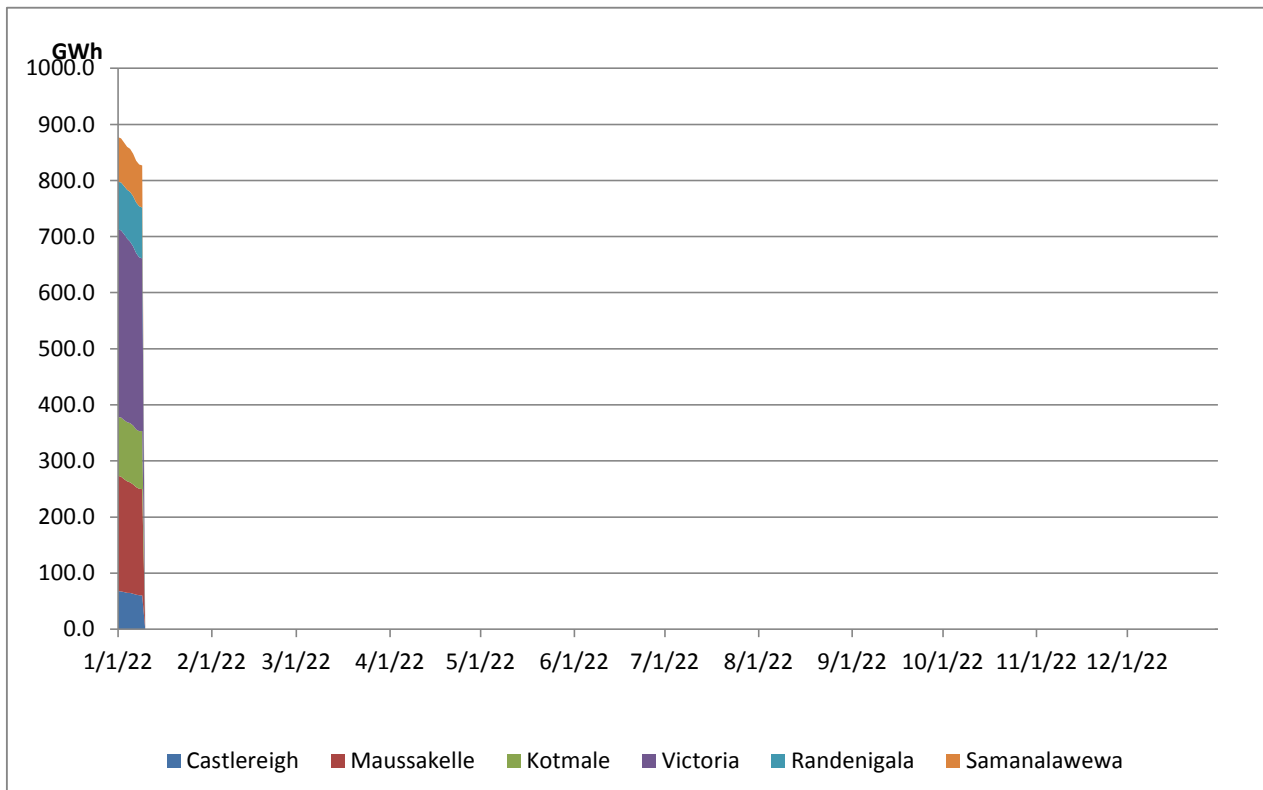
| | |
|----------------------------|-------|
| Total Reservoir Level(GWh) | 826.8 |
| % of Total capacity | 68.6% |

Comparison of Total Reservoir Storage Levels with Past Years

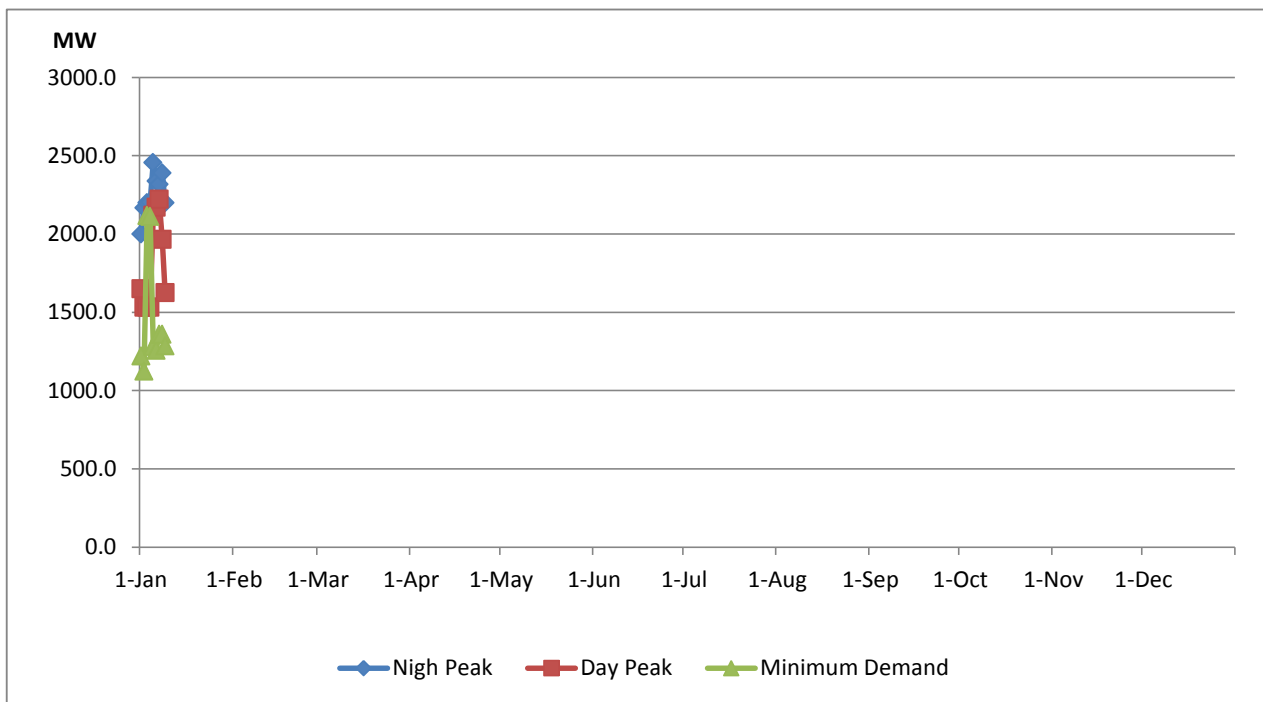


Data for 2018 and 2019 are only available for part of year.

Variation of Major Hydro Reservoir Levels in the current year (GWh)



Variation of Demand during the current year

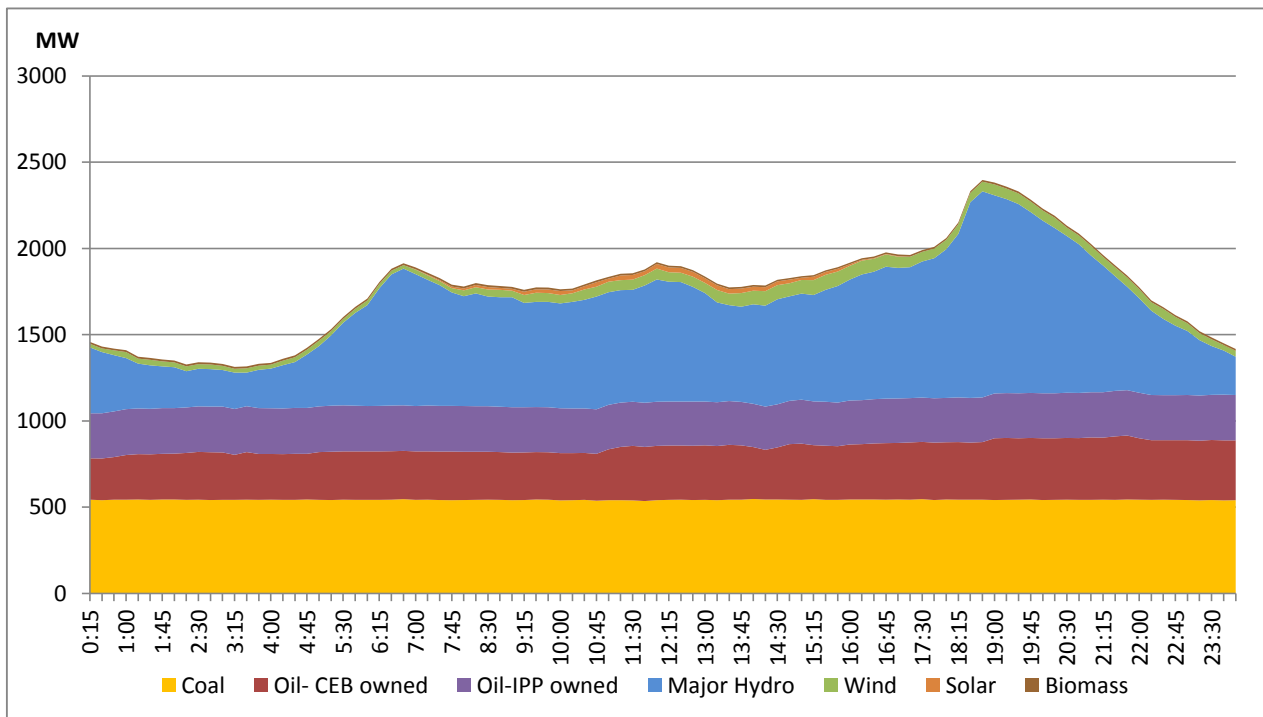


as: The above figures are excluding contribution from Roof Top Solar, 1MW solar, certain Wind plants and Mini Hydro plants

Daily Load Curve of the Previous day

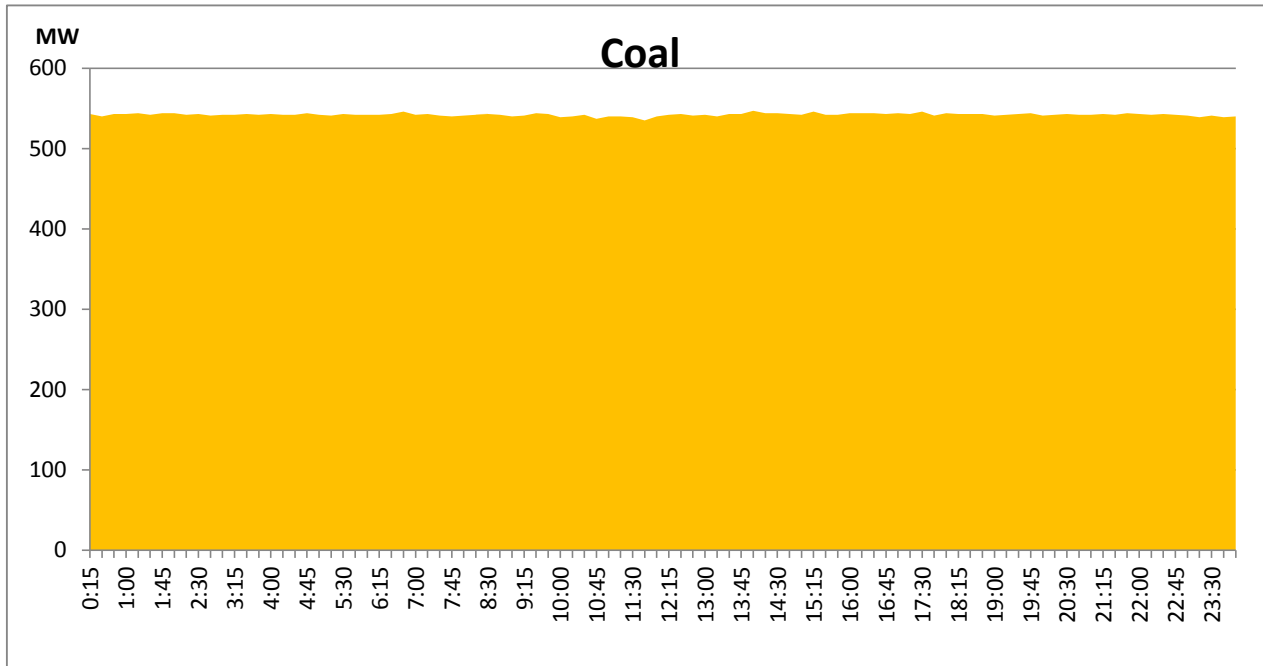
January 8, 2022

Solar and wind data is based on Telemetered Power Stations only



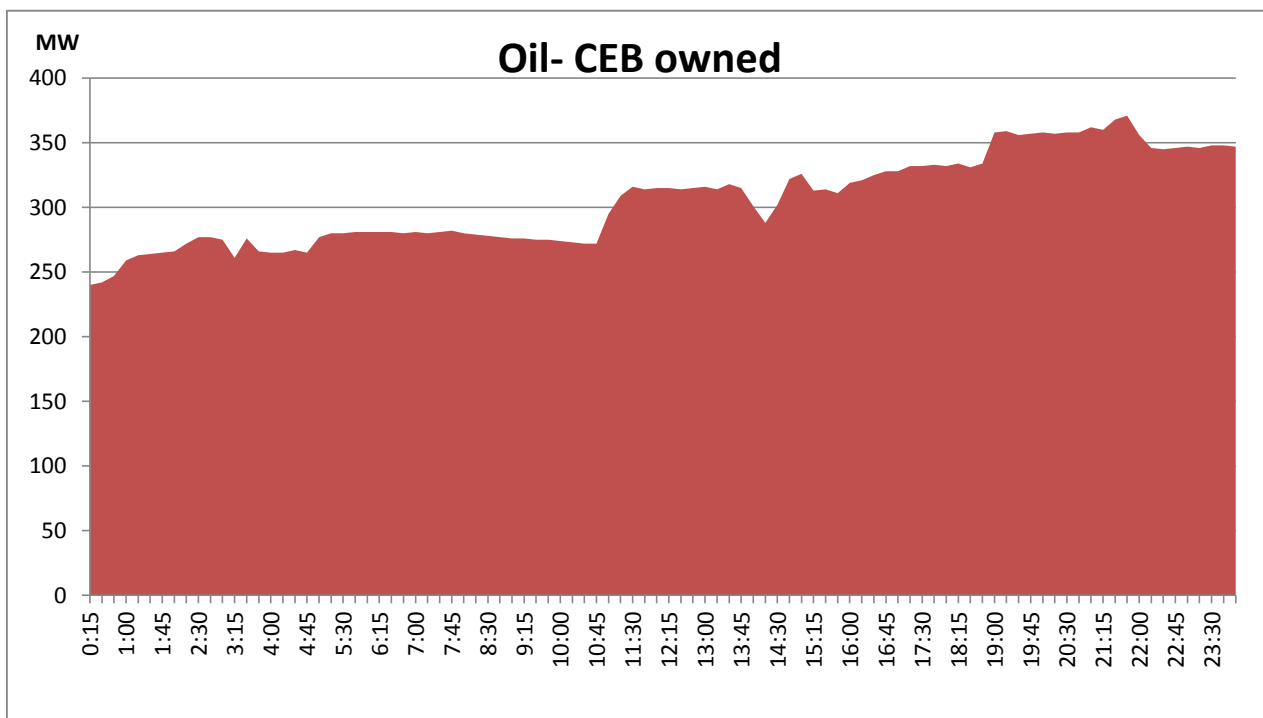
Coal Generation during the Previous day

January 8, 2022



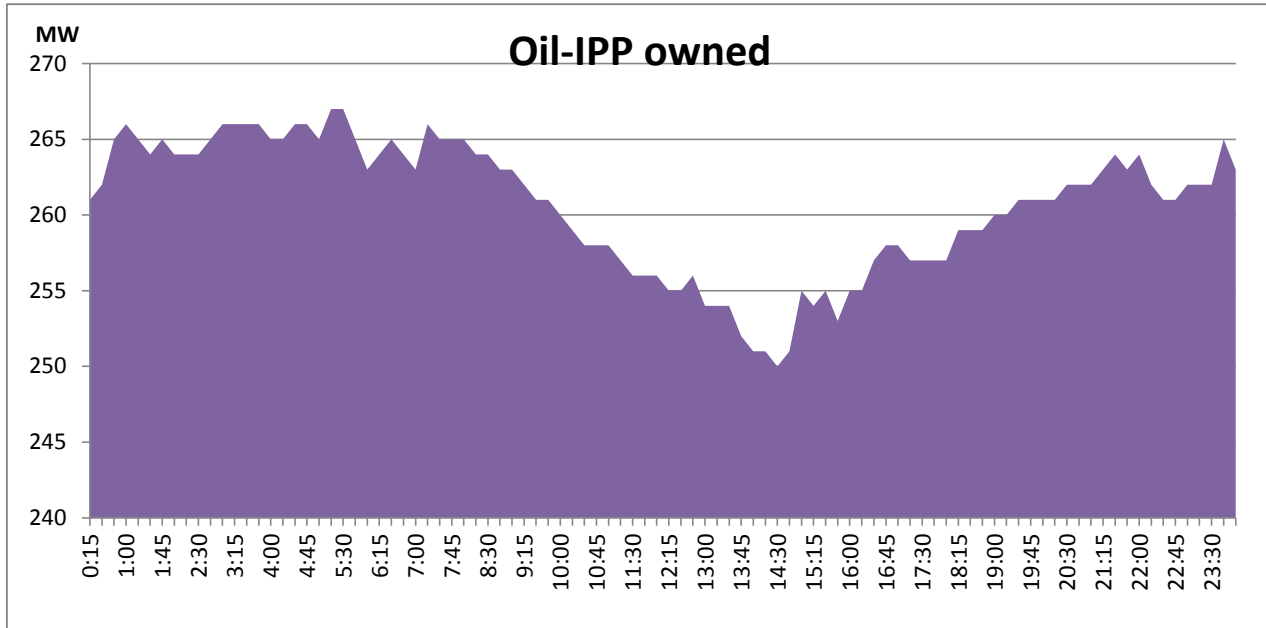
CEB Oil Plant Generation during the Previous day

January 8, 2022



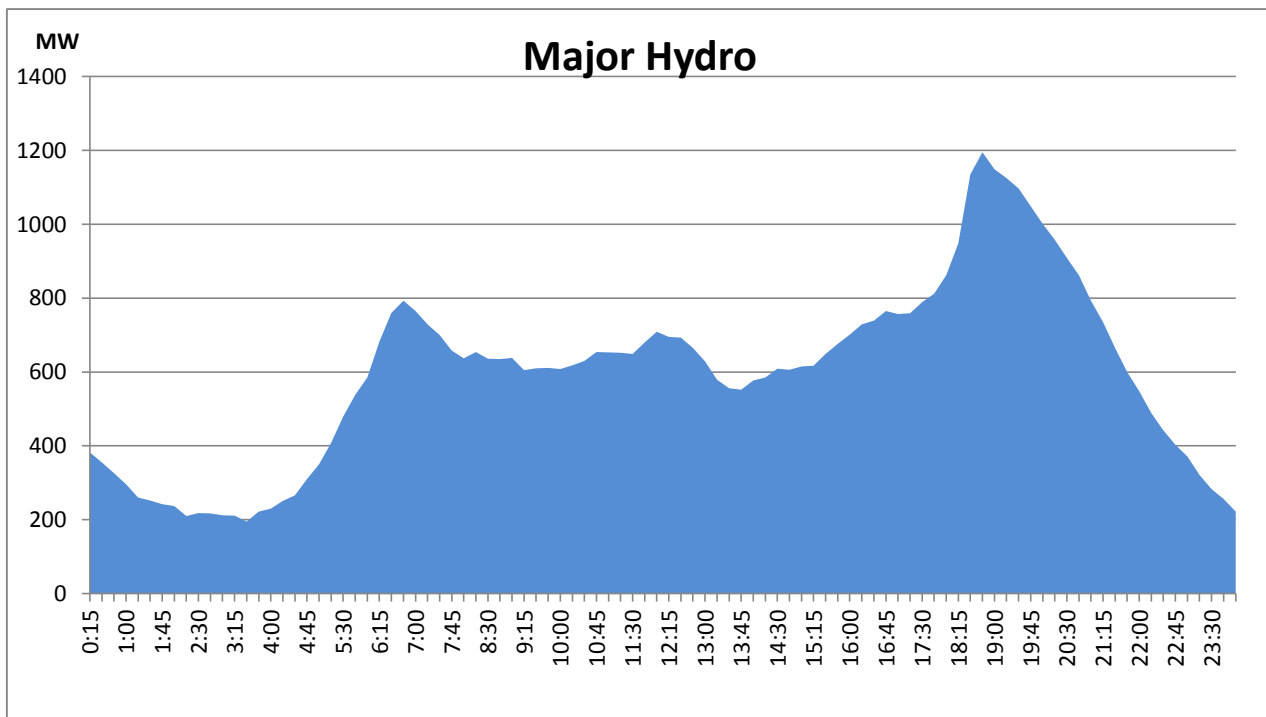
IPP Oil Plant Generation during the Previous day

January 8, 2022



Major Hydro Generation during the Previous day

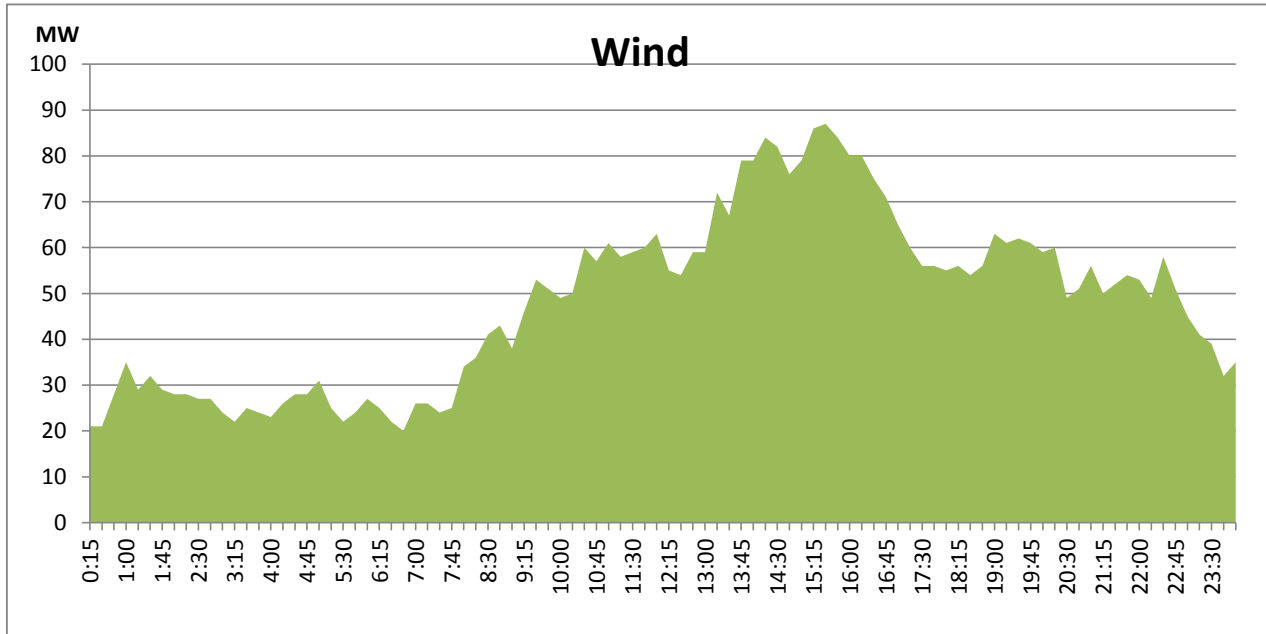
January 8, 2022



Wind Generation during the Previous day

January 8, 2022

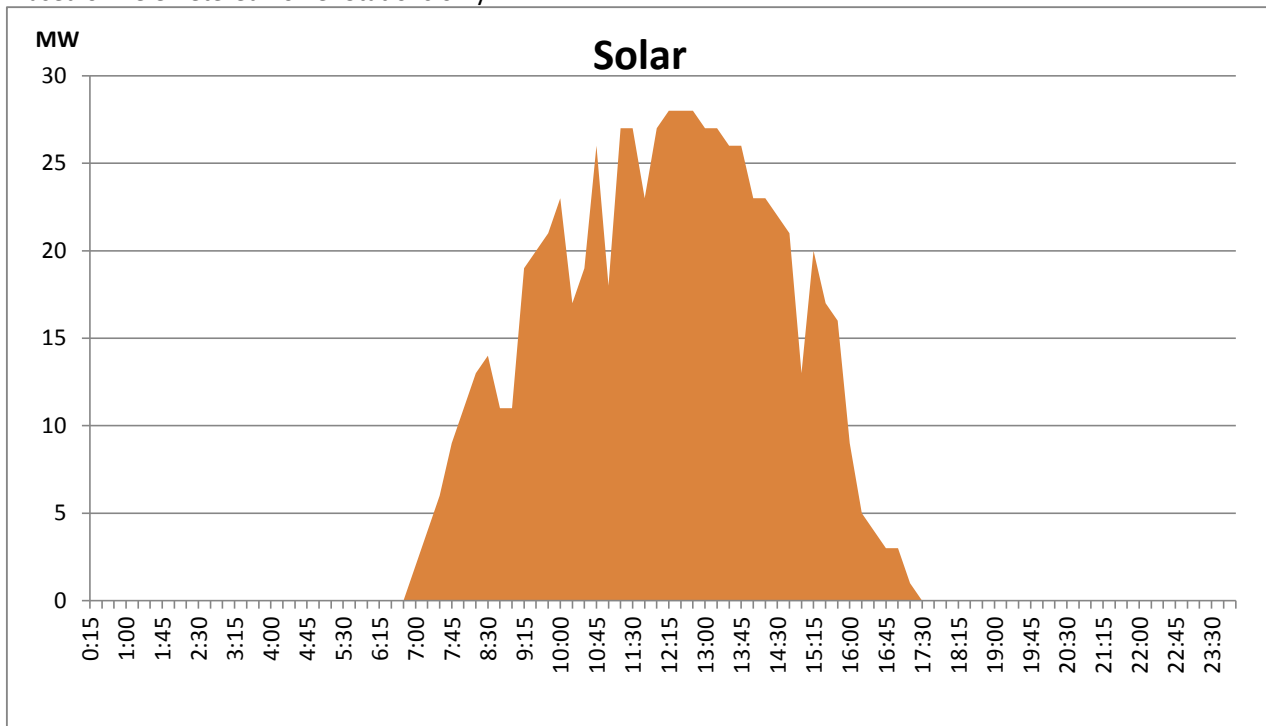
Based on Telemetered Power Stations only



Solar Generation during the Previous day

January 8, 2022

Based on Telemetered Power Stations only



Thermal Plant Fuel types

| Power Station | Primary Fuel |
|---------------------------------------|---------------------|
| CEB Thermal | |
| Sapugaskanda 1 | Heavy Fuel |
| Sapugaskanda 2 | Heavy Fuel |
| Kelanitissa Small Gas Turbines | Auto Diesel |
| GT 7 - Kelanitissa | Auto Diesel |
| Kelanitissa CCY | Naptha & Diesel |
| Lakvijaya 1 | Coal |
| Lakvijaya 2 | Coal |
| Lakvijaya 3 | Coal |
| Uthuru Janani | Heavy Fuel |
| Barge CEB | Furnace Oil |
| | |

| Power Station | Primary Fuel |
|-----------------------------|-------------------------|
| Private Thermal | |
| Sojitz - Kelanitissa | Auto Diesel |
| West Coast | Low Sulphur Furnace oil |
| | |
| | |

Major Incidents during the day -as reported by CEB morning of

January 10, 2022

1) Kappalthurai 132/33kV T/F 02 tripped at 11:40hrs due to Earthing T/F Buchholz trip causing all 33kV feeders to be dead. Kappalthurai T/F 02 energized at 17:44hrs and all affected feeders normalized at 18:03hrs.

2) Kukule spilling started at 19:30hrs and continue to present hour.