

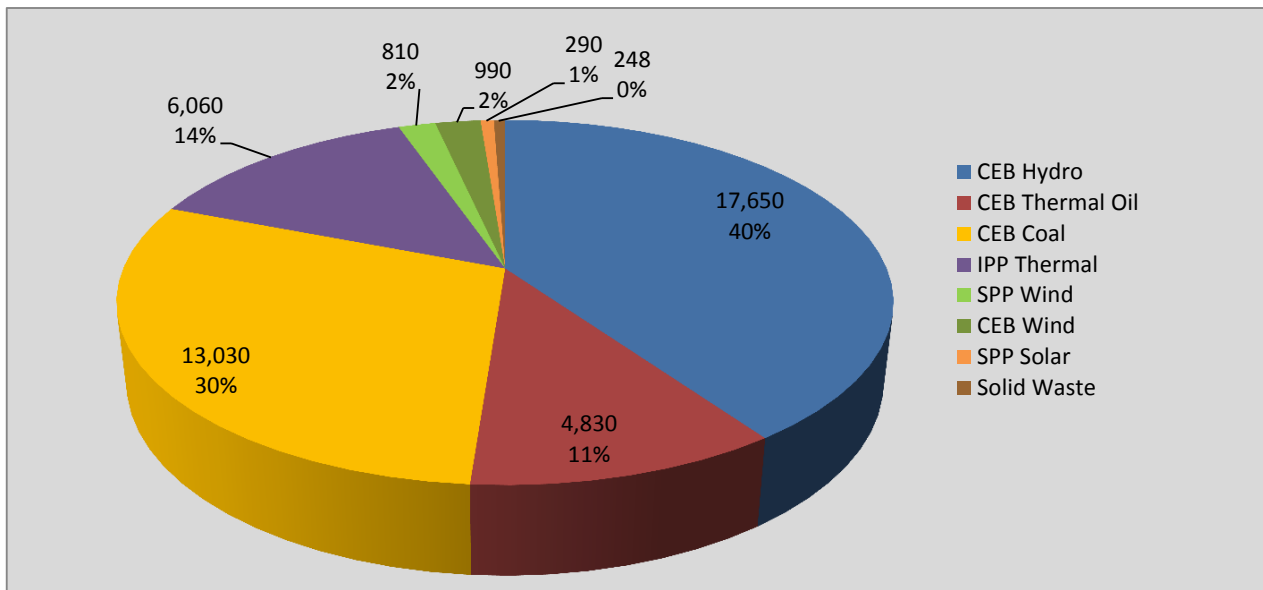
# **Generation and Reservoirs Statistics**

**January 6, 2022**



**PUBLIC UTILITIES COMMISSION OF SRI LANKA**

## Daily Generation Mix in MWh



**Total Generation** **43,901 MWh**

Note: Above data is Excluding contribution from Roof Top Solar, 1MW solar and Mini Hydro plants

## Cumulative Dispatch

Note: Following data is Excluding contribution from Roof Top Solar, 1MW solar and Mini Hydro plants

### For Current Month

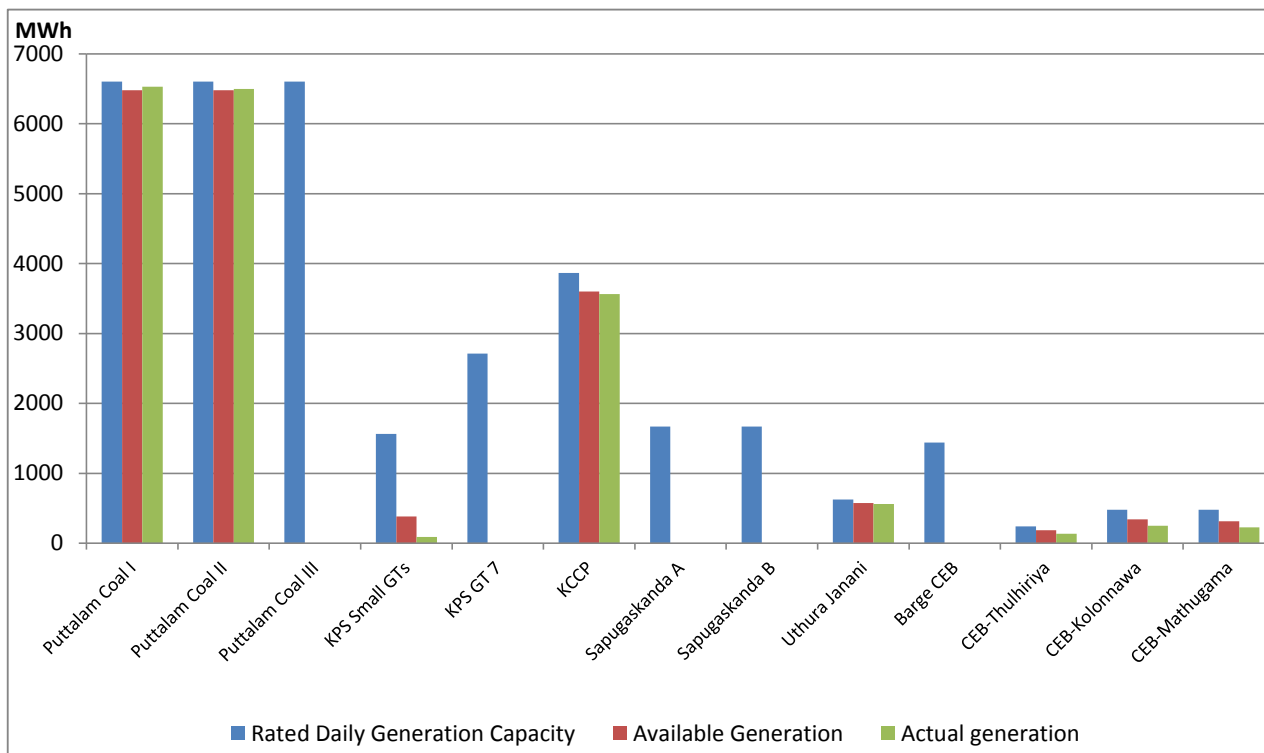
Category	Dispatch (GWh)	Percentage
CEB Hydro	82.3	33.65%
CEB Thermal Oil	34.1	13.94%
CEB Coal	78.0	31.90%
IPP Thermal	36.3	14.85%
SPP Wind	5.0	2.05%
CEB Wind	6.1	2.50%
SPP Solar	1.2	0.49%
SPP Solid Waste	1.5	0.62%
<b>Total</b>	<b>244.4</b>	

### For Current Year

Category	Dispatch (GWh)	Percentage
CEB Hydro	82.3	33.65%
CEB Thermal Oil	34.1	13.94%
CEB Coal	78.0	31.90%
IPP Thermal	36.3	14.85%
SPP Wind	5.0	2.05%
CEB Wind	6.1	2.50%
SPP Solar	1.2	0.49%
SPP Waste Heat	1.5	0.62%
<b>Total</b>	<b>244.4</b>	

## CEB owned Thermal Plant Dispatch

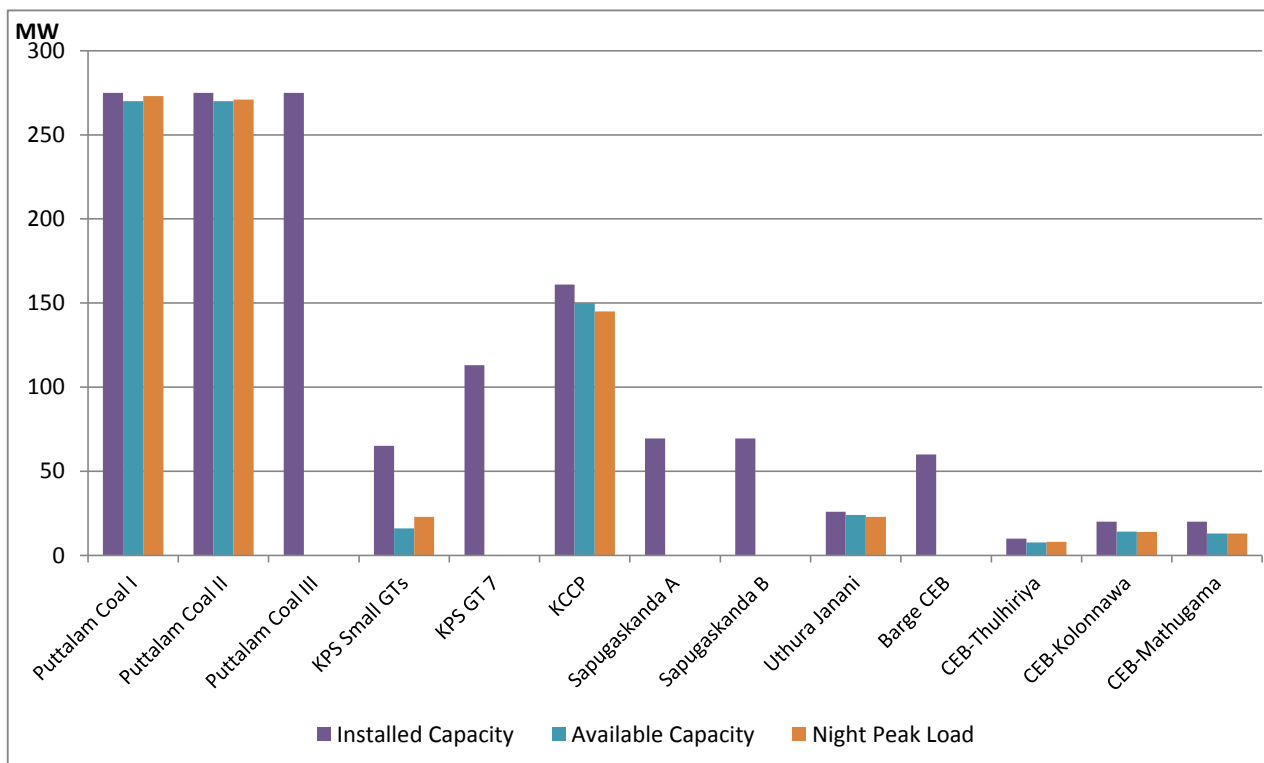
January 6, 2022



Available Generation is estimated based on plant availability at 6.00am on

January 7, 2022

## CEB owned Thermal Plant Loading at the Night Peak



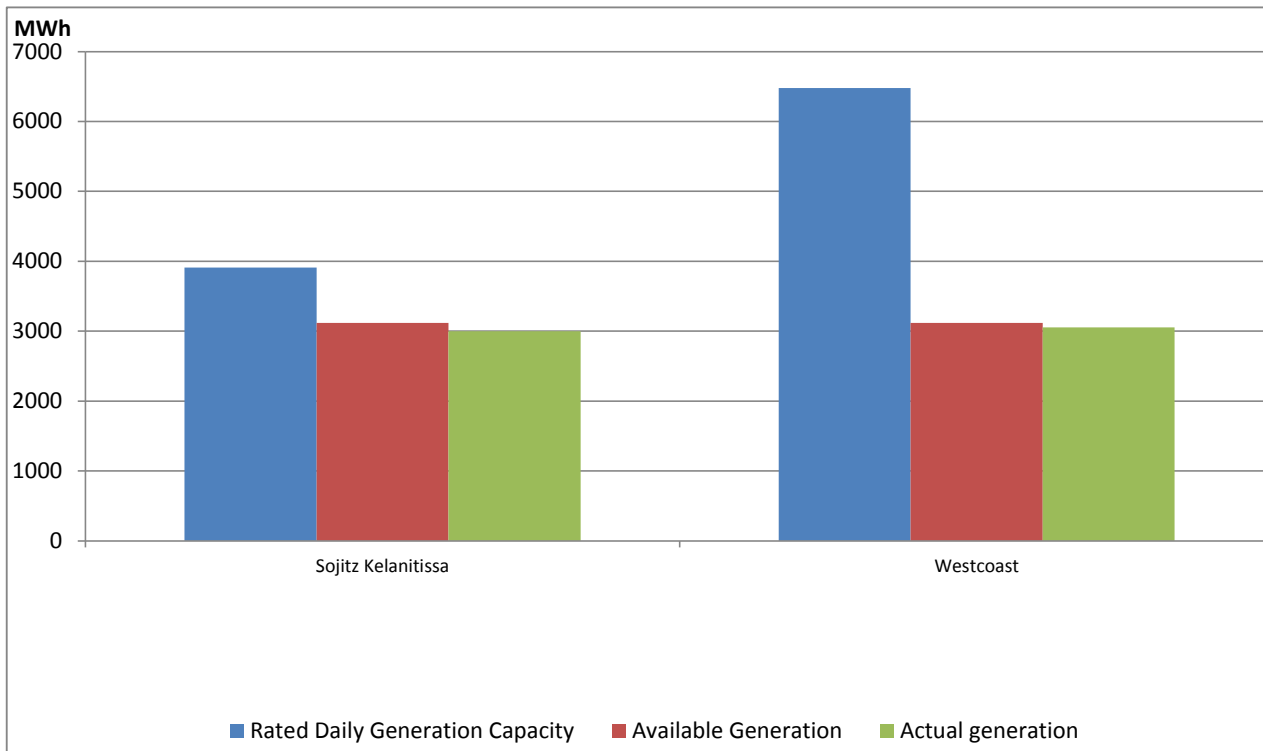
Note- Plant availability is recorded at 6.00 am on

January 7, 2022

## IPP owned Thermal Plant Dispatch

January 6, 2022

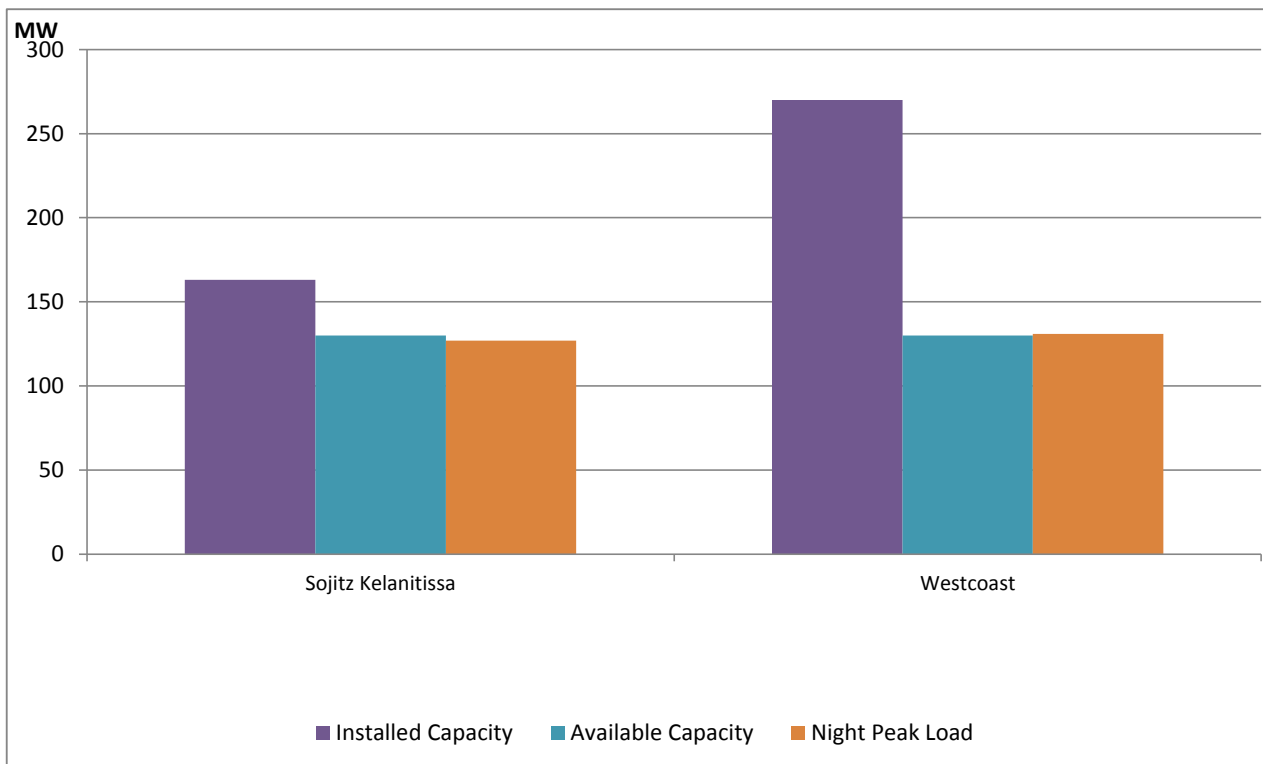
ACE Embilipitiya, ACE Matara, Asia Power, V Power Pallekale, Vpower Galle, V Power Horana, Vpower Hambantota, Vpower Valachchena and Altaqa Mahiyanganaya are not available due to expiration of PPAs



Available Generation is estimated based on plant availability at 6.00am on

January 7, 2022

## IPP owned Thermal Plant Loading at the Night Peak

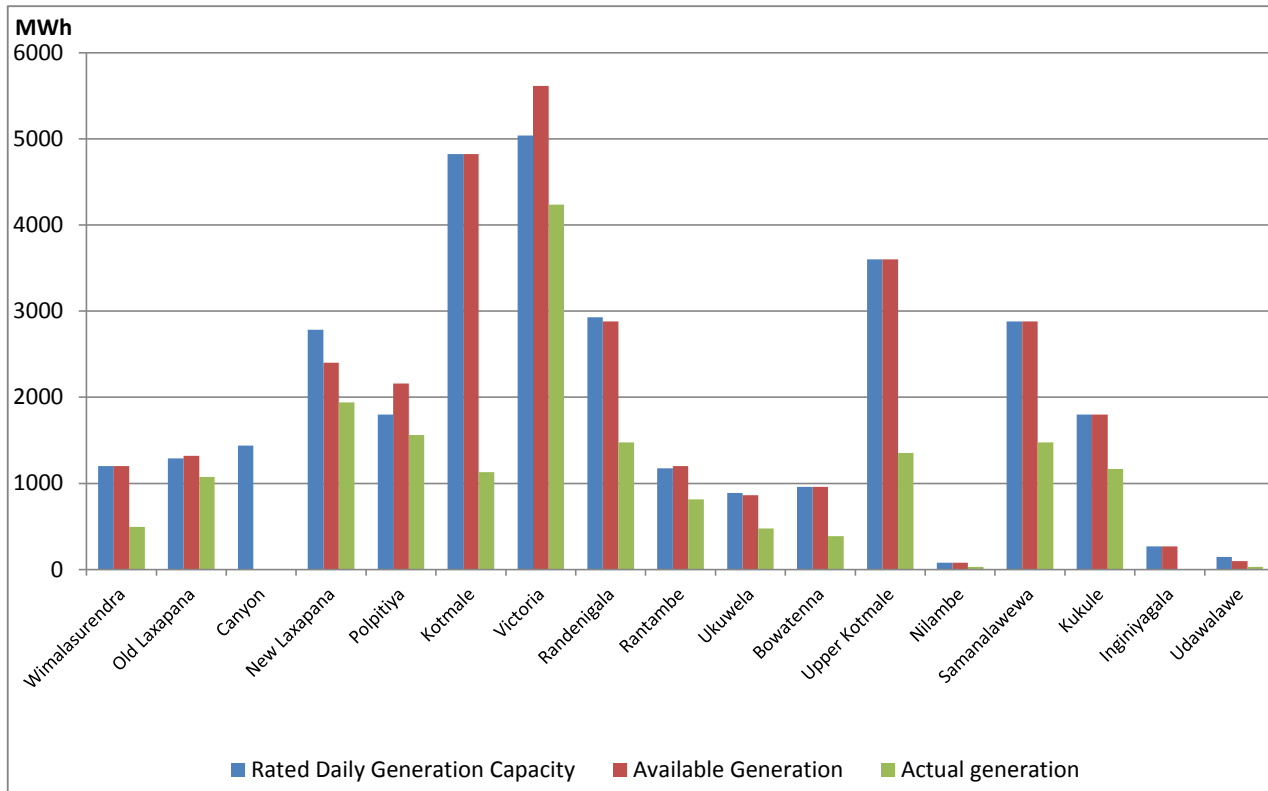


Note- Plant availability is recorded at 6.00 am on

January 7, 2022

## Major Hydro Plant Dispatch

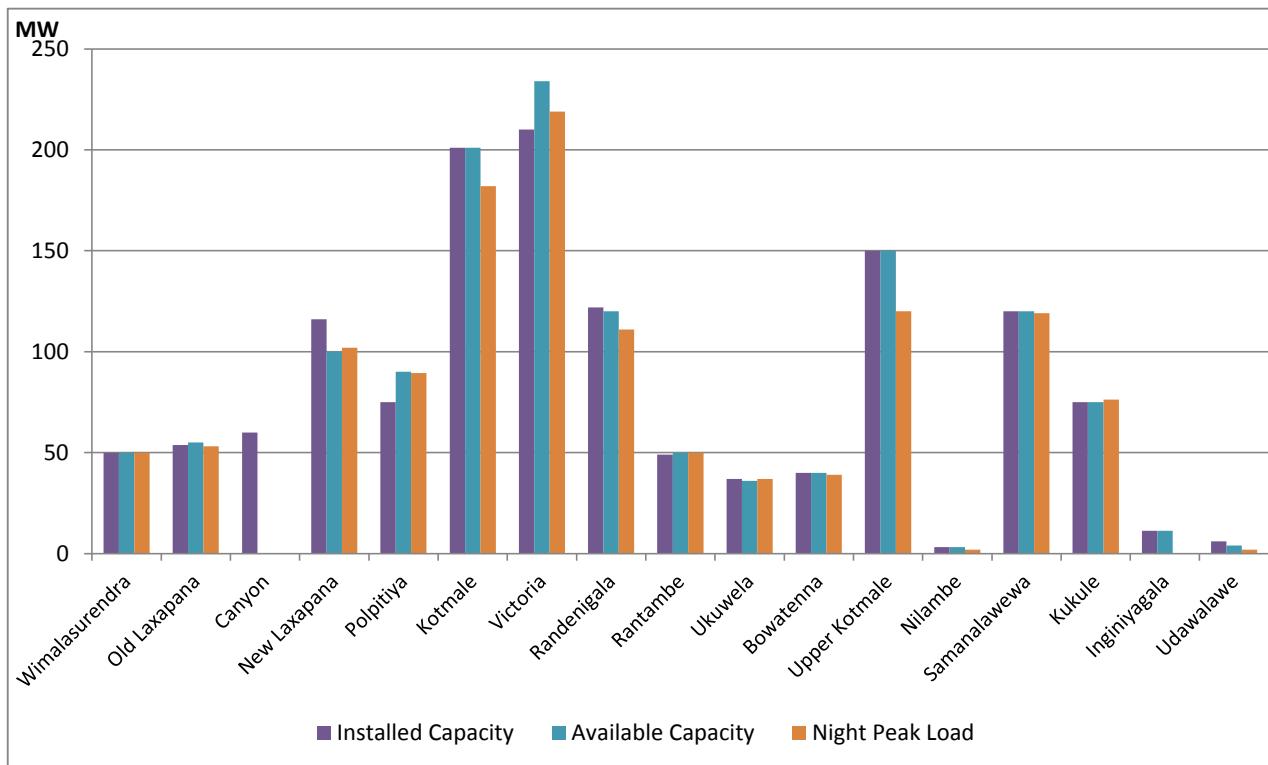
January 6, 2022



Note- Available Generation is estimated based on plant availability at 6.00am on January 7, 2022

## Major Hydro Plant Loading at Night Peak

January 6, 2022



Note- Plant availability is recorded at 6.00 am on January 7, 2022

Summary of Major Plant performance

Plant	Installed Capacity (MW)	Plant Availability (MW)	Night peak Load (MW)	Dispatch (GWh)
Wimalasurendra	50.00	50.00	50.00	496.00
Old Laxapana	53.80	55.00	53.20	1,074.00
Canyon	60.00	-	-	-
New Laxapana	116.00	100.00	102.00	1,939.00
Polpitiya	75.00	90.00	89.40	1,563.00
Kotmale	201.00	201.00	182.00	1,130.00
Victoria	210.00	234.00	219.00	4,235.00
Randenigala	122.00	120.00	111.00	1,474.00
Rantambe	49.00	50.00	50.00	814.00
Ukuwela	37.00	36.00	37.00	476.00
Bowatenna	40.00	40.00	39.00	386.00
Upper Kotmale	150.00	150.00	120.00	1,354.00
Nilambe	3.20	3.20	2.00	32.00
Samanalawewa	120.00	120.00	119.00	1,476.00
Kukule	75.00	75.00	76.30	1,168.00
Inginiyagala	11.25	11.25	-	-
Udawalawe	6.00	4.00	2.00	32.00
Puttalam Coal I	275.00	270.00	273.00	6,530.00
Puttalam Coal II	275.00	270.00	271.00	6,499.00
Puttalam Coal III	275.00	-	-	-
KPS Small GTs	65.20	16.00	23.00	91.00
KPS GT 7	113.00	-	-	1.00
KCCP	161.00	150.00	145.00	3,563.00
Sapugaskanda A	69.60	-	-	-
Sapugaskanda B	69.60	-	-	-
Uthura Janani	26.01	24.00	23.00	560.00
Barge CEB	60.00	-	-	-
CEB-Thulhiriya	10.00	7.70	8.00	137.00
CEB-Kolonnawa	20.00	14.20	14.00	249.00
CEB-Mathugama	20.00	13.00	13.00	226.00
Sojitz Kelanitissa	163.00	130.00	127.00	3,001.00
Westcoast	270.00	130.00	131.00	3,055.00
Vpower-Valach.	24.00	-	-	-
Solar	68.00		-	290.00
Wind	248.00		59.70	1,802.00
MH and BM	441.00		48.80	Not available
Total without NCRE	3,538.46	2,364.35		

Night peak load of MH and BM only include loading of Minihydro plants of total capacity MW

129

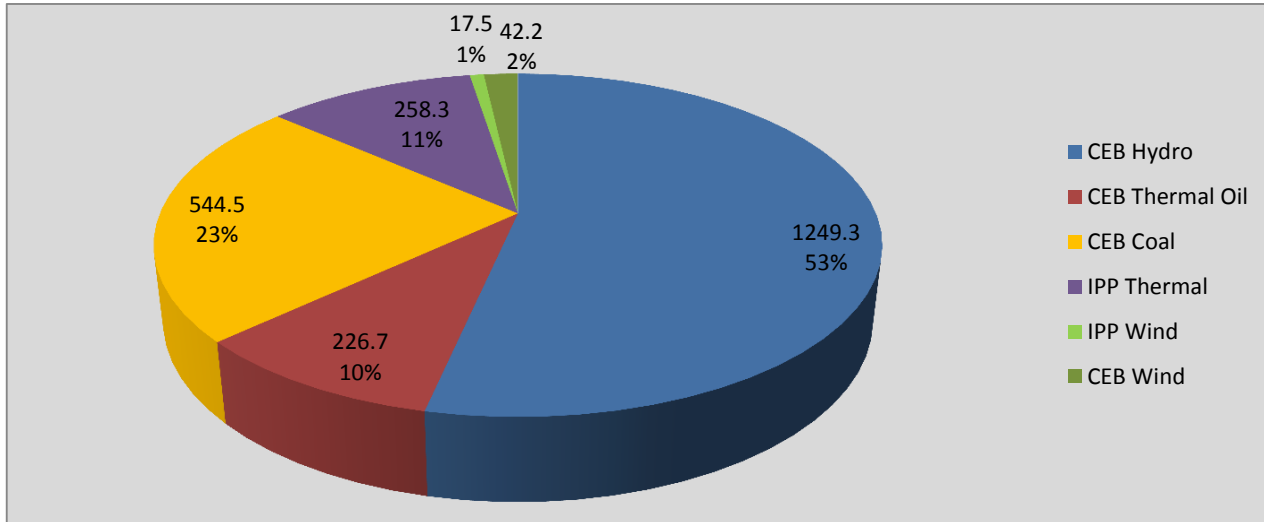
Installed capacity of Solar, wind, Mini-hydro and Biomass plants are as of end of December 2019

Plant availability is the availability recorded at 6 am on

January 7, 2022

## Contribution to the Night Peak in MW

January 6, 2022

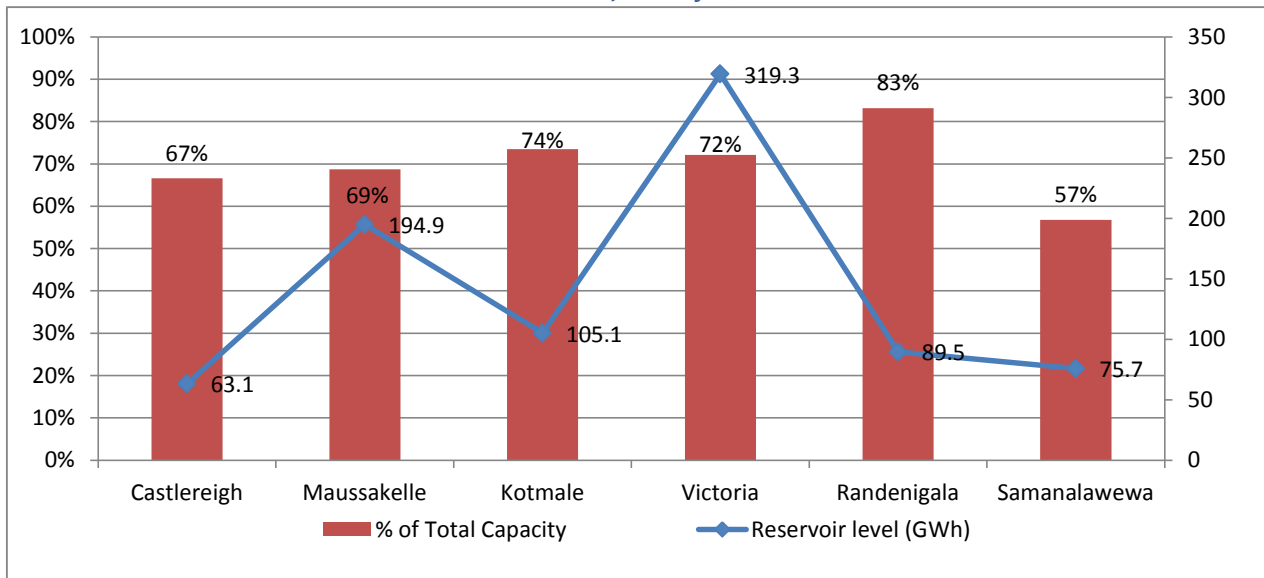


Night Peak*	2,338.4 MW
Day Peak	2,171.0 MW
Minimum Demand	1,257.7 MW

Above figures are excluding contribution from Roof Top Solar, 1MW solar, certain Wind plants and Mini Hydro plants

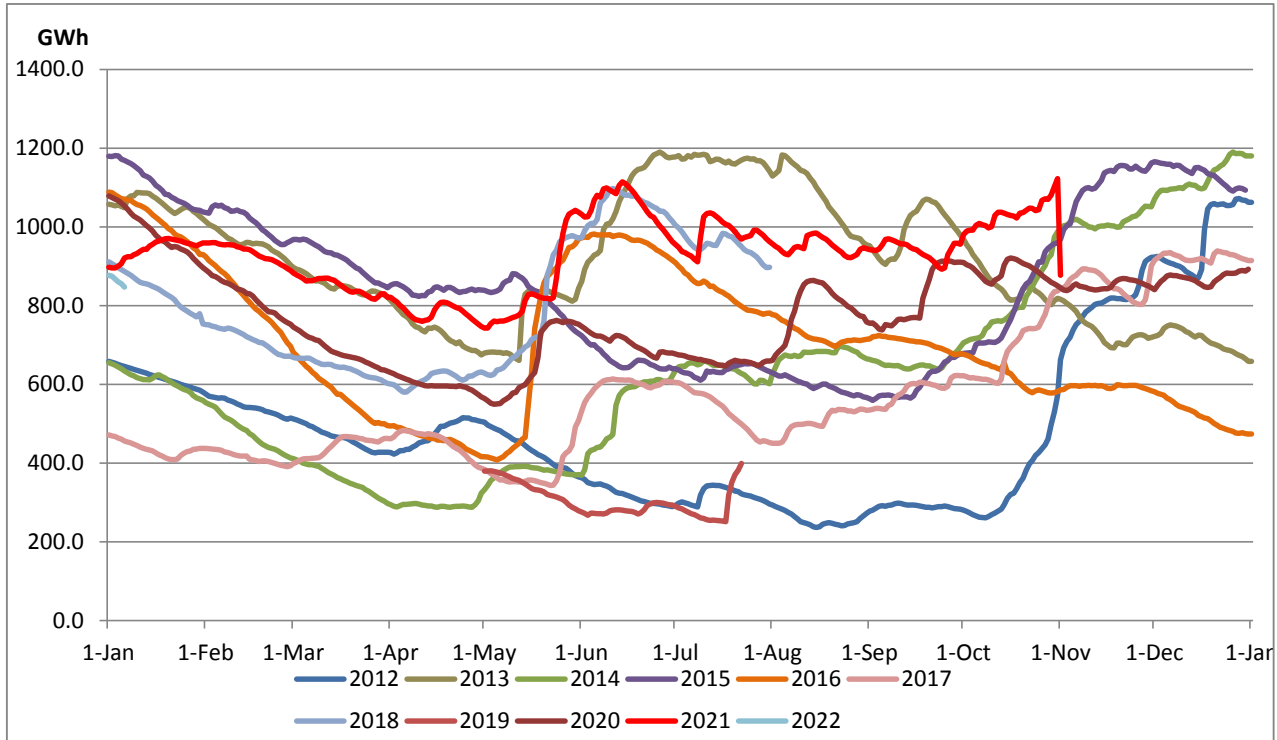
\* in addition to the night peak figure presented above, Kerawalapitiya solid waste plant and 26 no. of MiniHydro Plants has contributed 59.40 MW to the night peak

## Reservoir Levels - as at 06.00 Hr on January 7, 2022



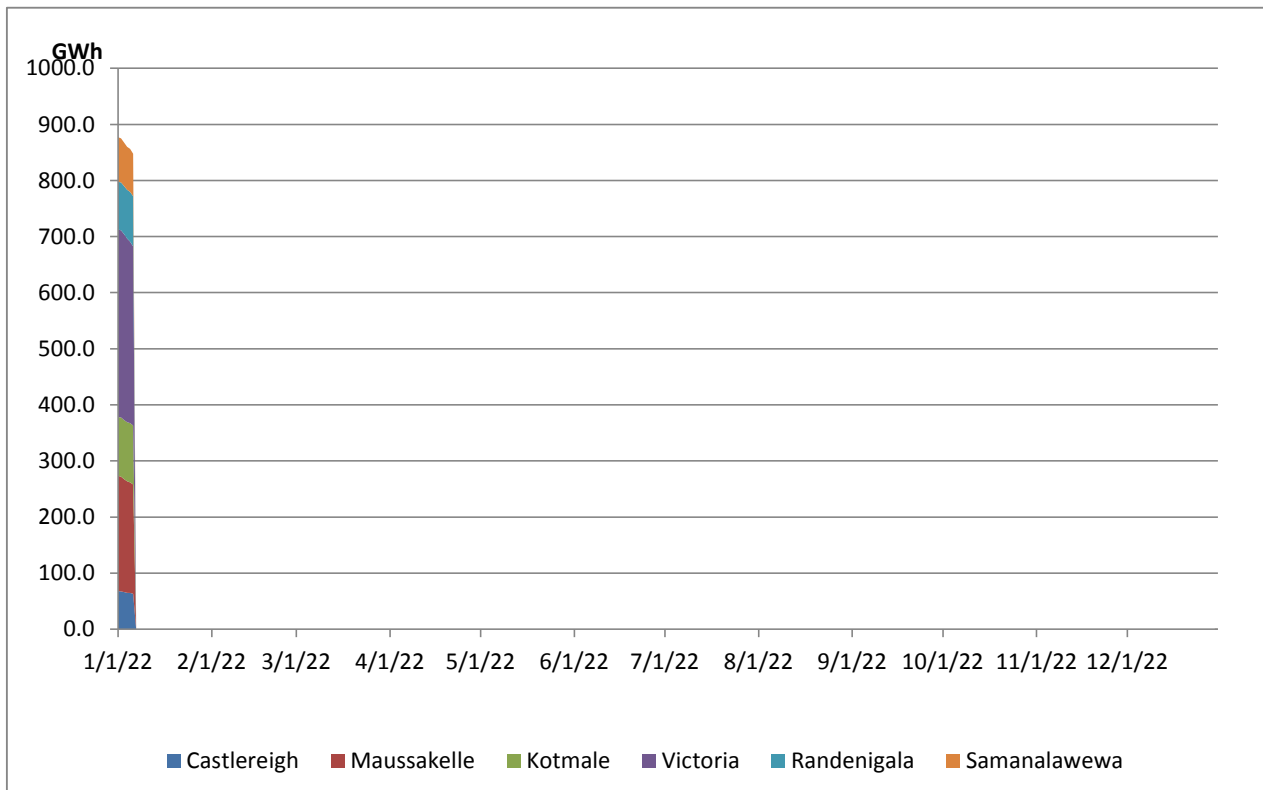
Total Reservoir Level(GWh)	847.6
% of Total capacity	70.3%

## Comparison of Total Reservoir Storage Levels with Past Years



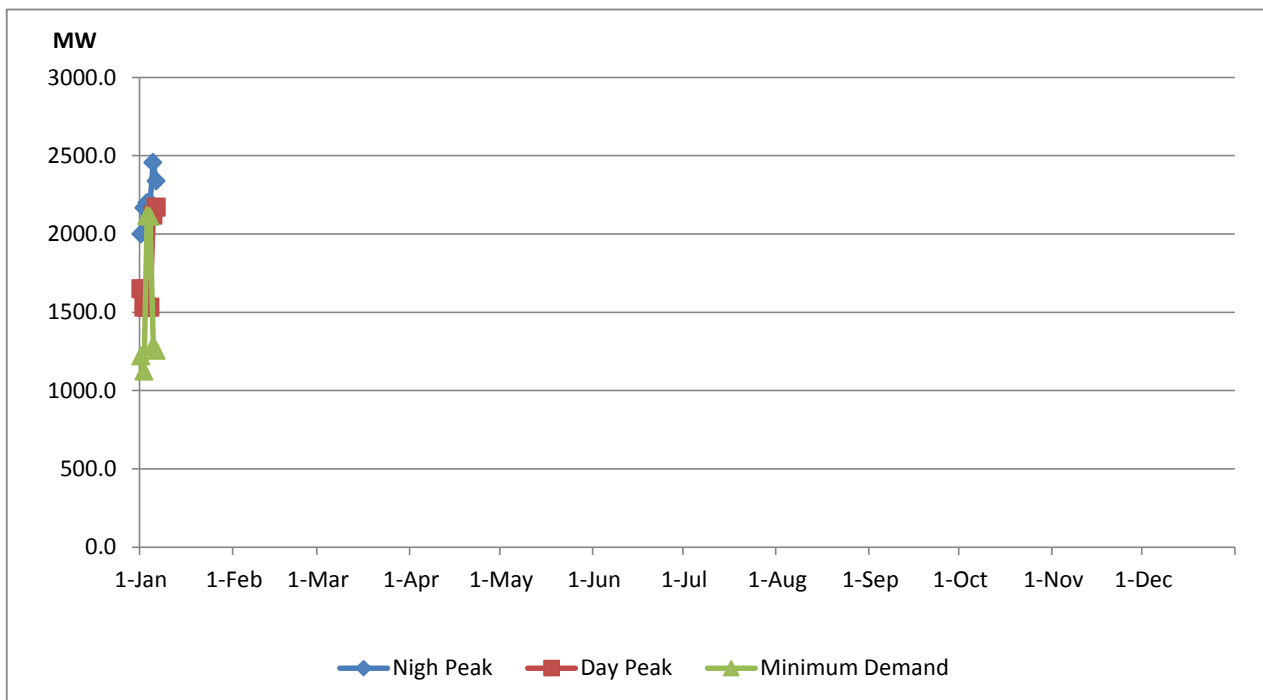
Data for 2018 and 2019 are only available for part of year.

## Variation of Major Hydro Reservoir Levels in the current year (GWh)





## Variation of Demand during the current year

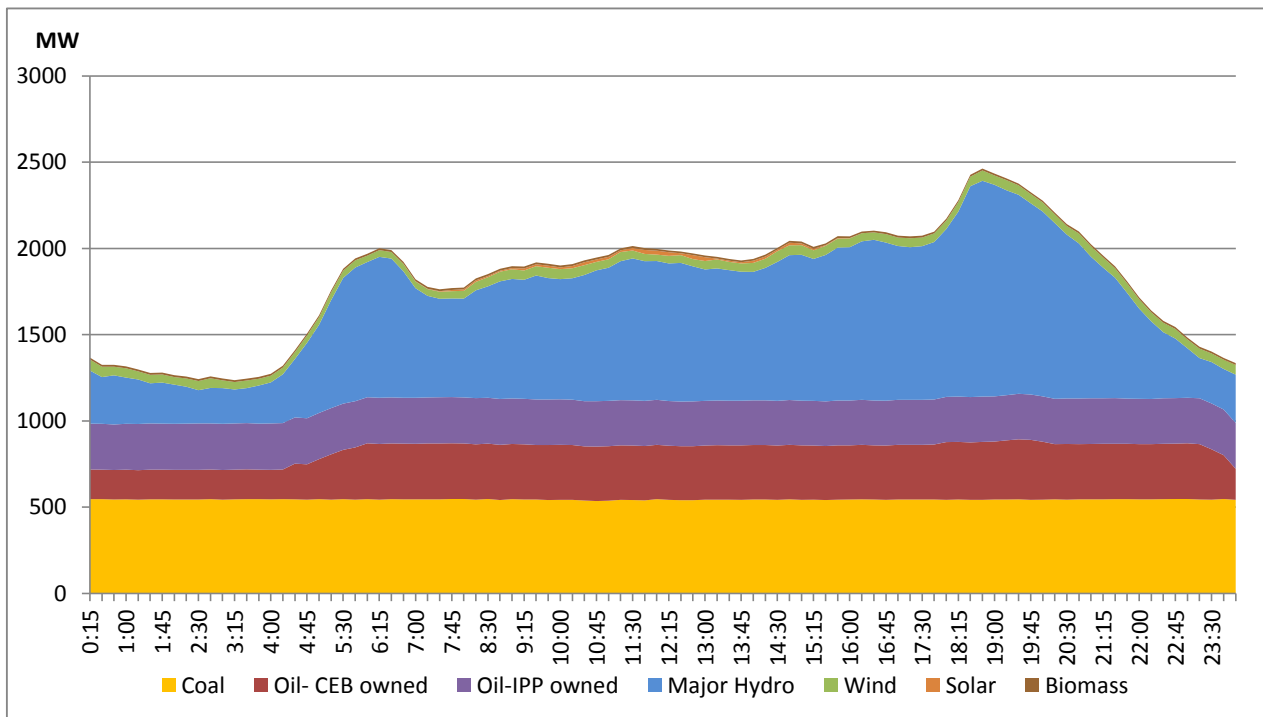


as: The above figures are excluding contribution from Roof Top Solar, 1MW solar, certain Wind plants and Mini Hydro plants

## Daily Load Curve of the Previous day

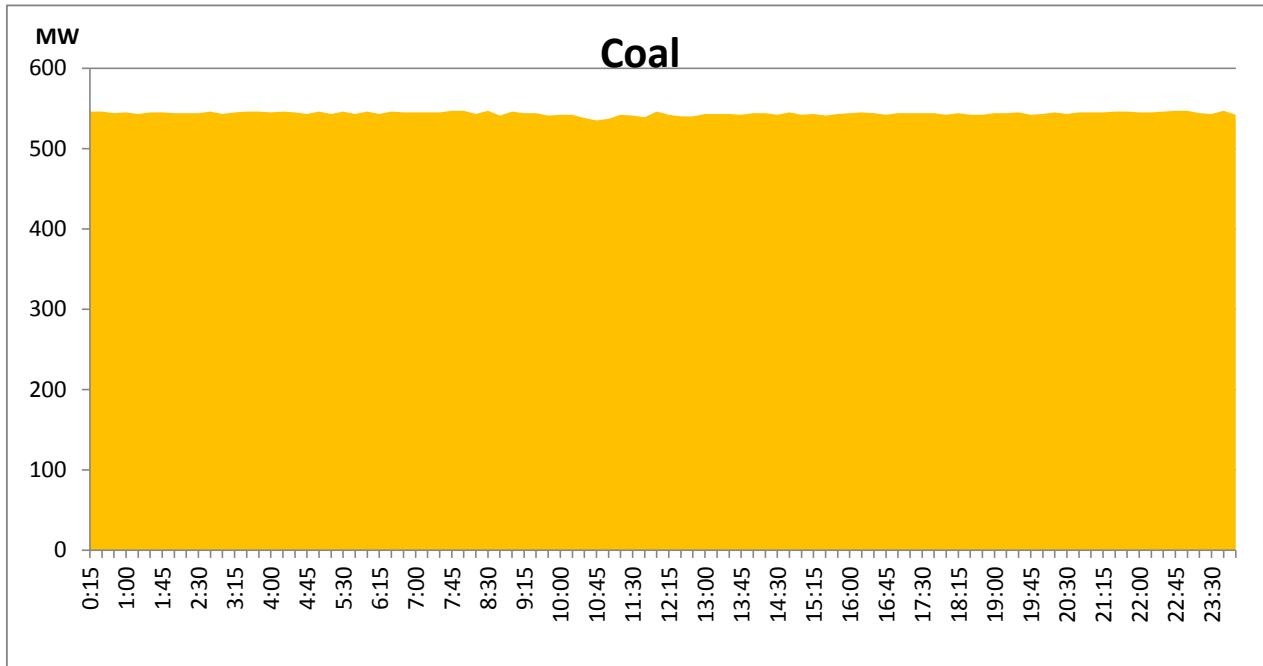
January 5, 2022

Solar and wind data is based on Telemetered Power Stations only



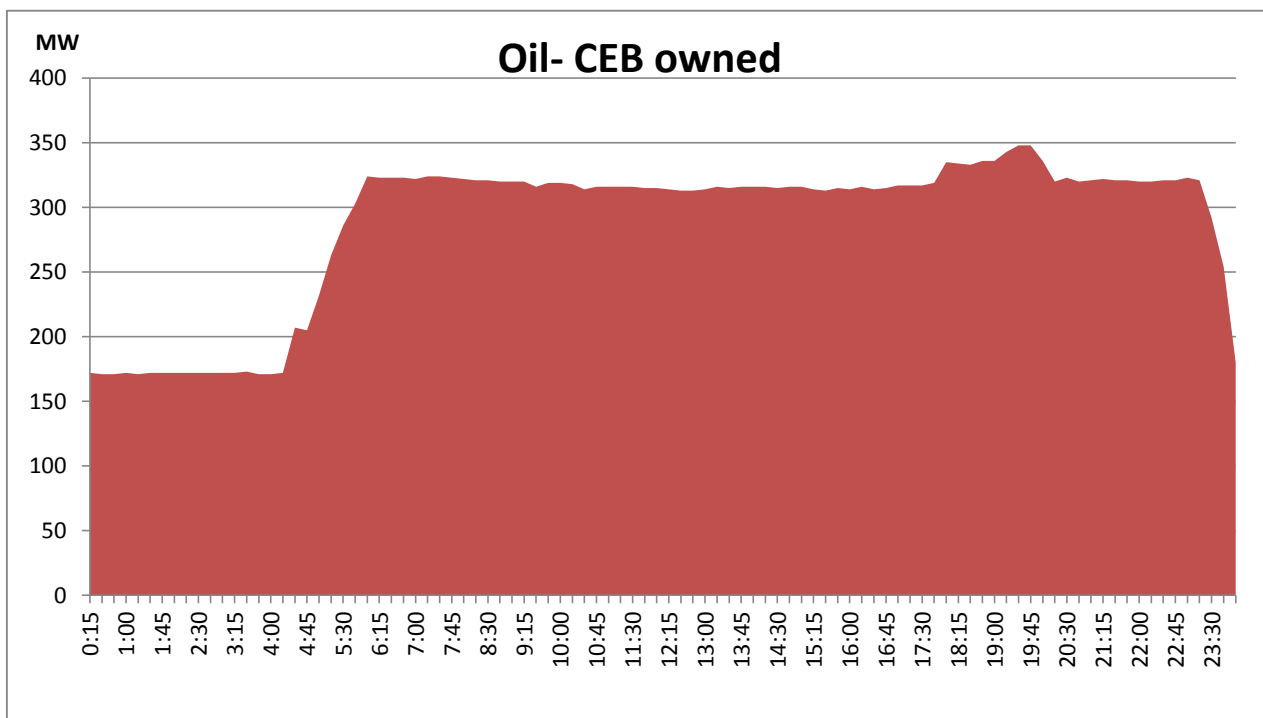
## Coal Generation during the Previous day

January 5, 2022



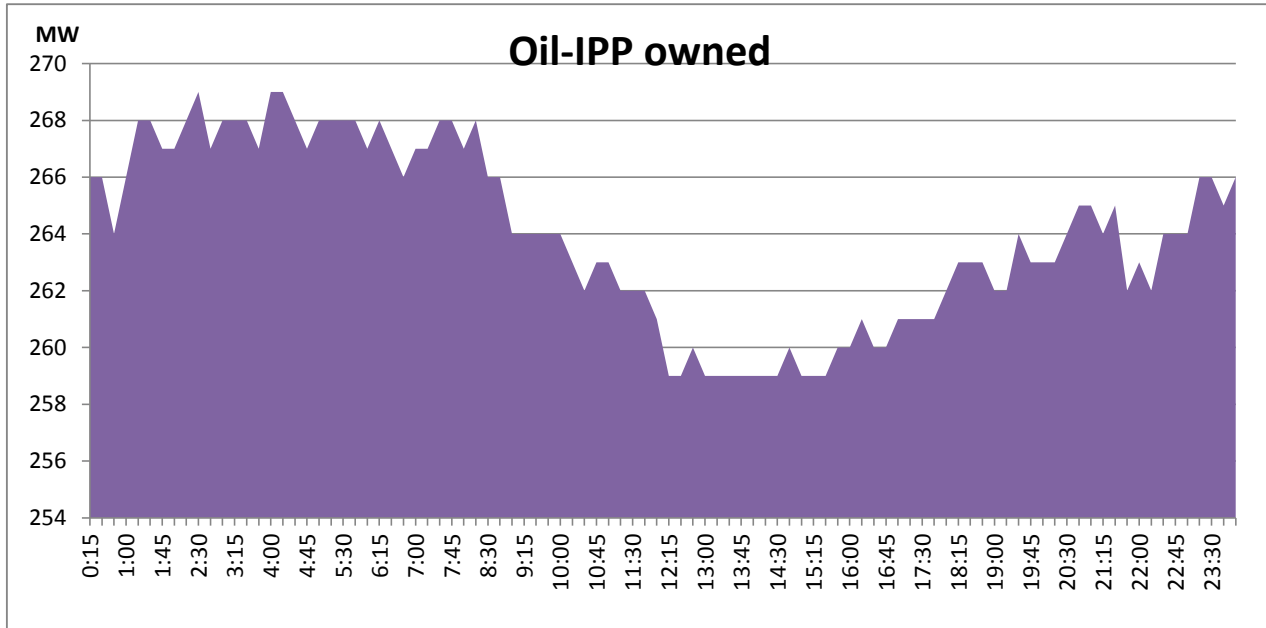
## CEB Oil Plant Generation during the Previous day

January 5, 2022



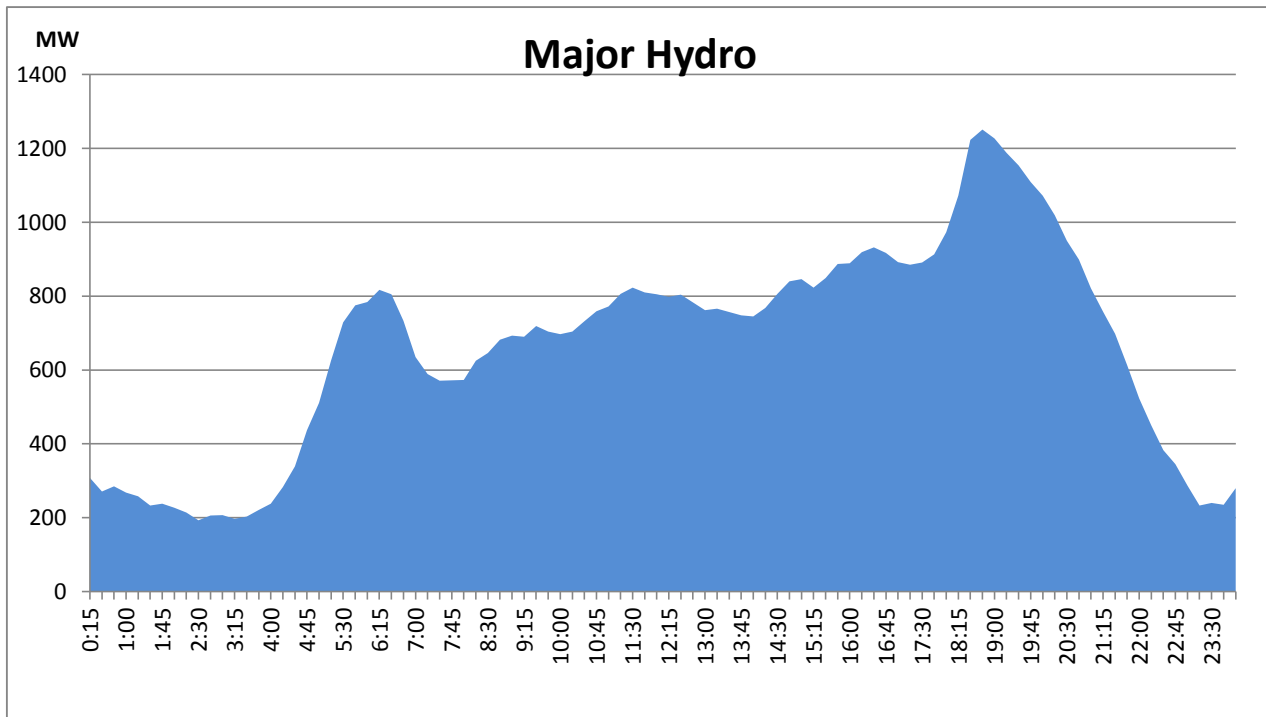
## IPP Oil Plant Generation during the Previous day

January 5, 2022



## Major Hydro Generation during the Previous day

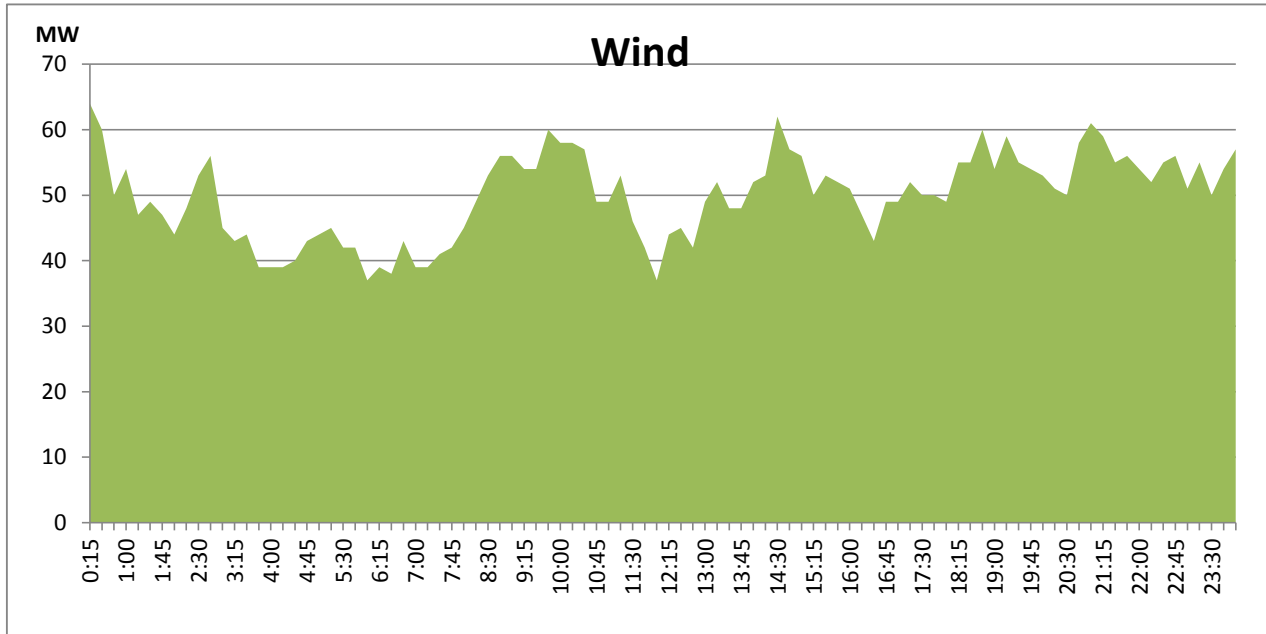
January 5, 2022



## Wind Generation during the Previous day

January 5, 2022

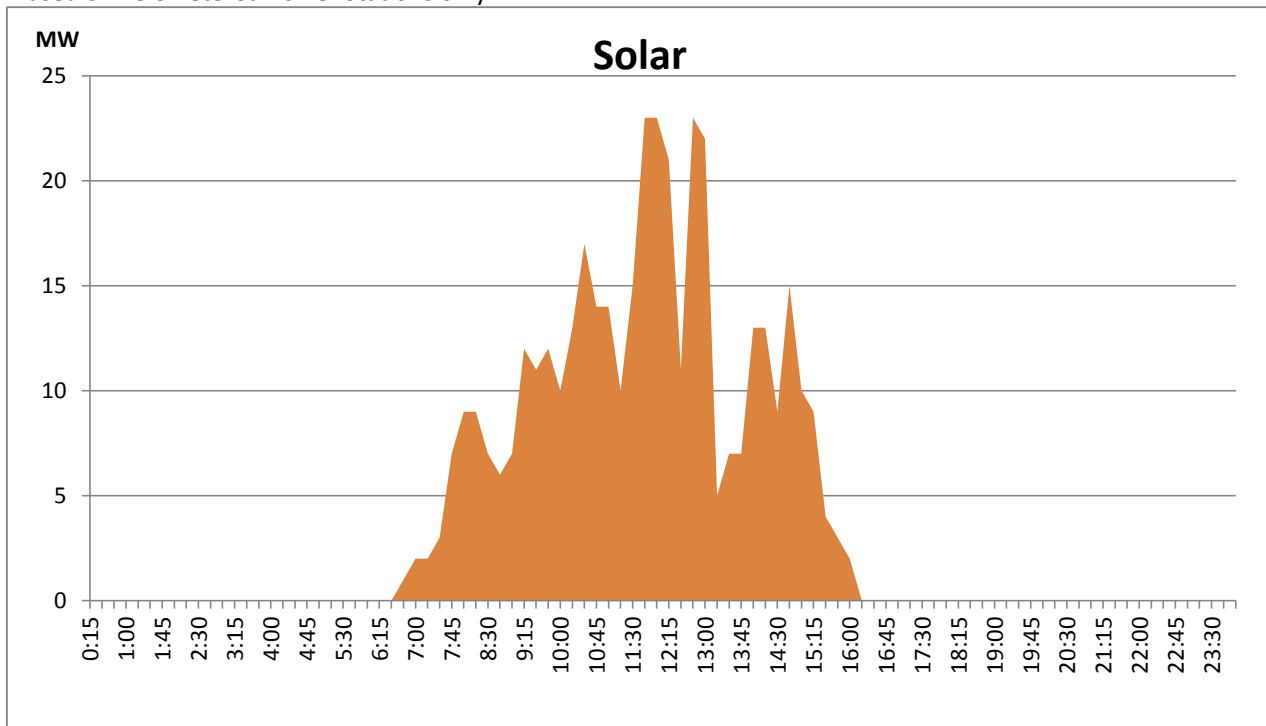
Based on Telemetered Power Stations only



## Solar Generation during the Previous day

January 5, 2022

Based on Telemetered Power Stations only



**Thermal Plant Fuel types**

<b>Power Station</b>	<b>Primary Fuel</b>
<b>CEB Thermal</b>	
<b>Sapugaskanda 1</b>	Heavy Fuel
<b>Sapugaskanda 2</b>	Heavy Fuel
<b>Kelanitissa Small Gas Turbines</b>	Auto Diesel
<b>GT 7 - Kelanitissa</b>	Auto Diesel
<b>Kelanitissa CCY</b>	Naptha & Diesel
<b>Lakvijaya 1</b>	Coal
<b>Lakvijaya 2</b>	Coal
<b>Lakvijaya 3</b>	Coal
<b>Uthuru Janani</b>	Heavy Fuel
<b>Barge CEB</b>	Furnace Oil

<b>Power Station</b>	<b>Primary Fuel</b>
<b>Private Thermal</b>	
<b>Sojitz - Kelanitissa</b>	Auto Diesel
<b>West Coast</b>	Low Sulphur Furnace oil

**Major Incidents during the day -as reported by CEB morning of**

**January 7, 2022**

1) N'Anu -Kappalthurai cct tripped and A/R from both ends at 11:51hrs, and cct tripped at 11:53hrs from both ends due to the operation of distance protection . Cct restored at 13:09hrs.

2) Balangoda - New Galle cct tripped and A/R from both ends at 18:36hrs due to the operation of distance protection.

3) KPS GT 07 startup failed at 04:20 hrs (06/01/2022) due to an issue in starter motor . KPS GT07 yet to resume generation.

4) Rantembe Gen 01 made unavailable from 04:55hrs (06/01/2022) due to a fault in excitation system. Rant gen 01 yet to resume generation.