

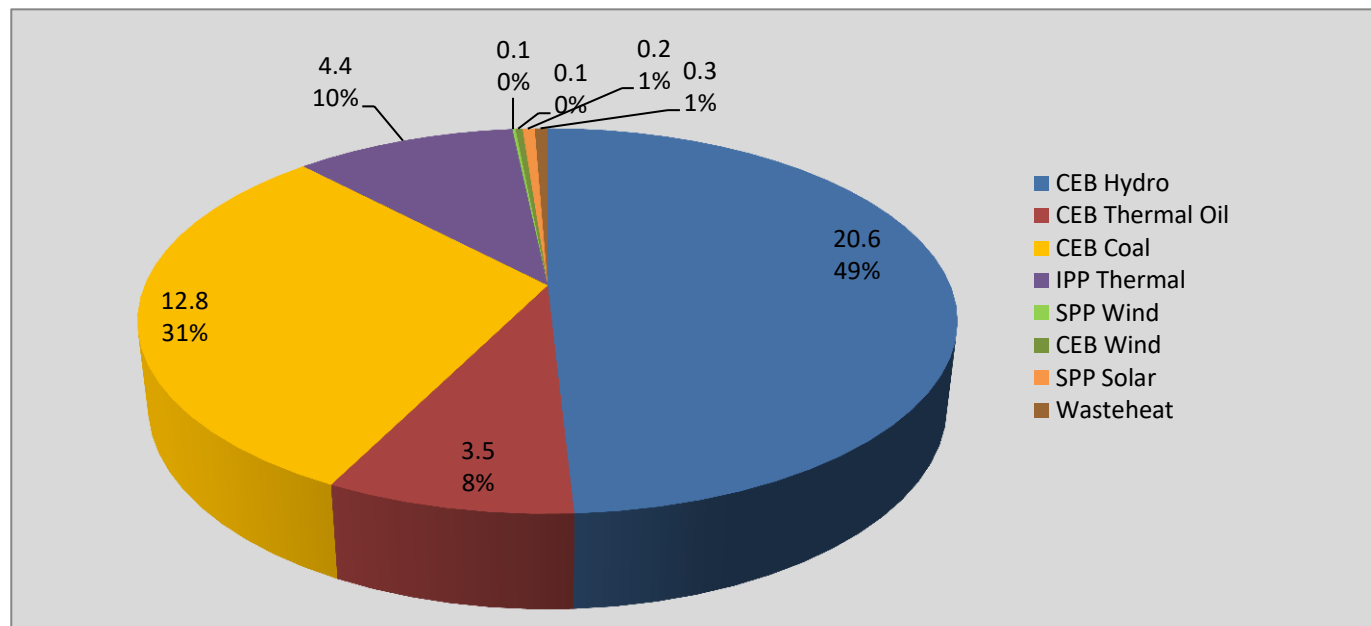
Generation and Reservoirs Statistics

October 25, 2021



PUBLIC UTILITIES COMMISSION OF SRI LANKA

Daily Generation Mix in MWh



Total Generation 41,931 MWh

Note: Above data is Excluding contribution from Roof Top Solar, 1MW solar, Mini Hydro plants and Biomass/ waste heat (except 10 MW Waste heat plant at Kerawalapitiya) plants

Cumulative Dispatch

Note: Following data is Excluding contribution from Roof Top Solar, 1MW solar, Mini Hydro plants and Biomass/ waste heat (except 10 MW Waste heat plant at Kerawalapitiya) plants

For Current Month

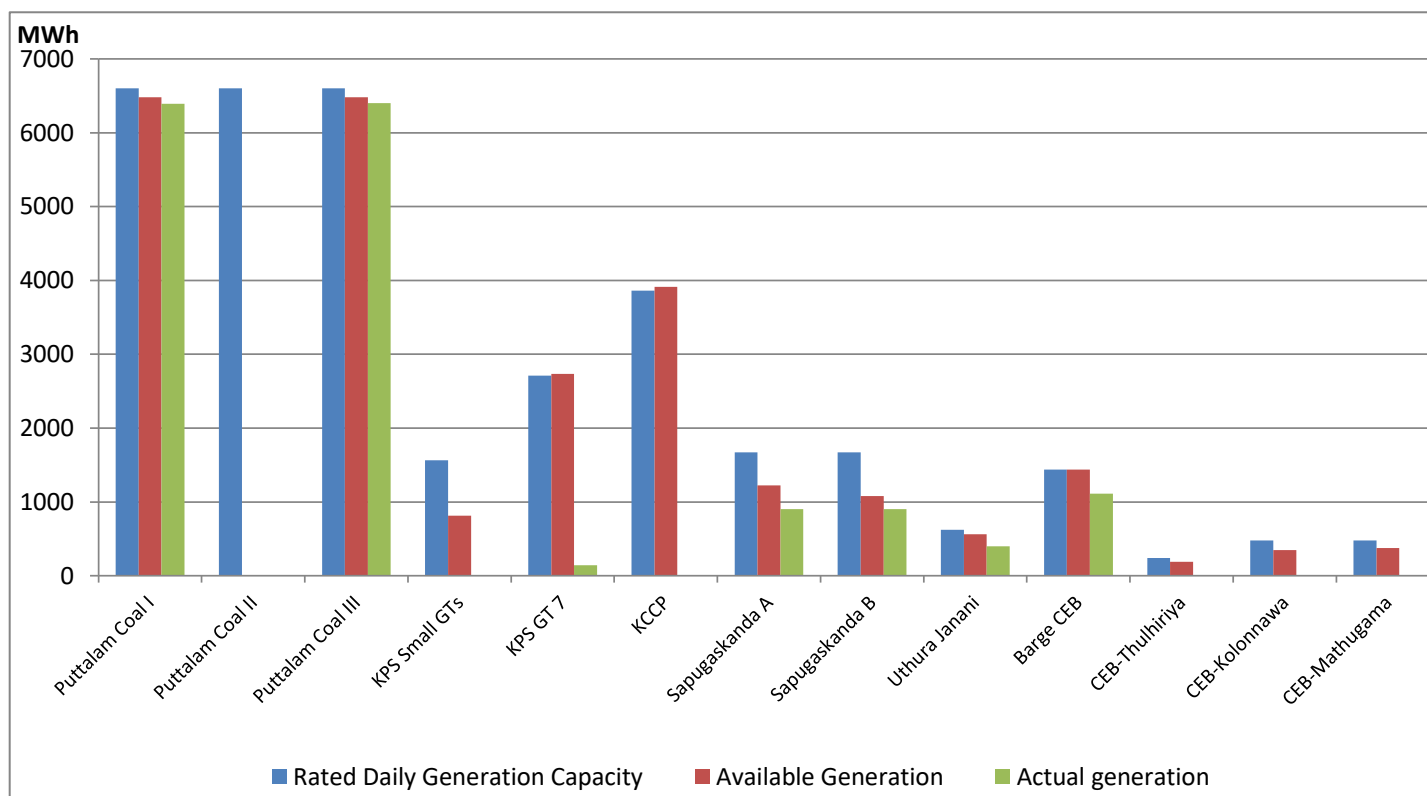
| Category | Dispatch (GWh) | |
|-----------------|----------------|--------|
| CEB Hydro | 468.7 | 47.16% |
| CEB Thermal Oil | 58.4 | 5.87% |
| CEB Coal | 362.7 | 36.49% |
| IPP Thermal | 37.1 | 3.73% |
| SPP Wind | 25.6 | 2.58% |
| CEB Wind | 30.2 | 3.03% |
| SPP Solar | 6.7 | 0.68% |
| SPP Waste Heat | 4.7 | 0.48% |
| Total | 994.0 | |

For Current Year

| Category | Dispatch (GWh) | |
|-----------------|-----------------|--------|
| CEB Hydro | 4,159.4 | 34.55% |
| CEB Thermal Oil | 1,033.9 | 8.59% |
| CEB Coal | 4,869.1 | 40.45% |
| IPP Thermal | 1,265.2 | 10.51% |
| SPP Wind | 207.5 | 1.72% |
| CEB Wind | 281.4 | 2.34% |
| SPP Solar | 80.3 | 0.67% |
| SPP Waste Heat | 31.9 | 0.26% |
| Total | 12,038.5 | |

CEB owned Thermal Plant Dispatch

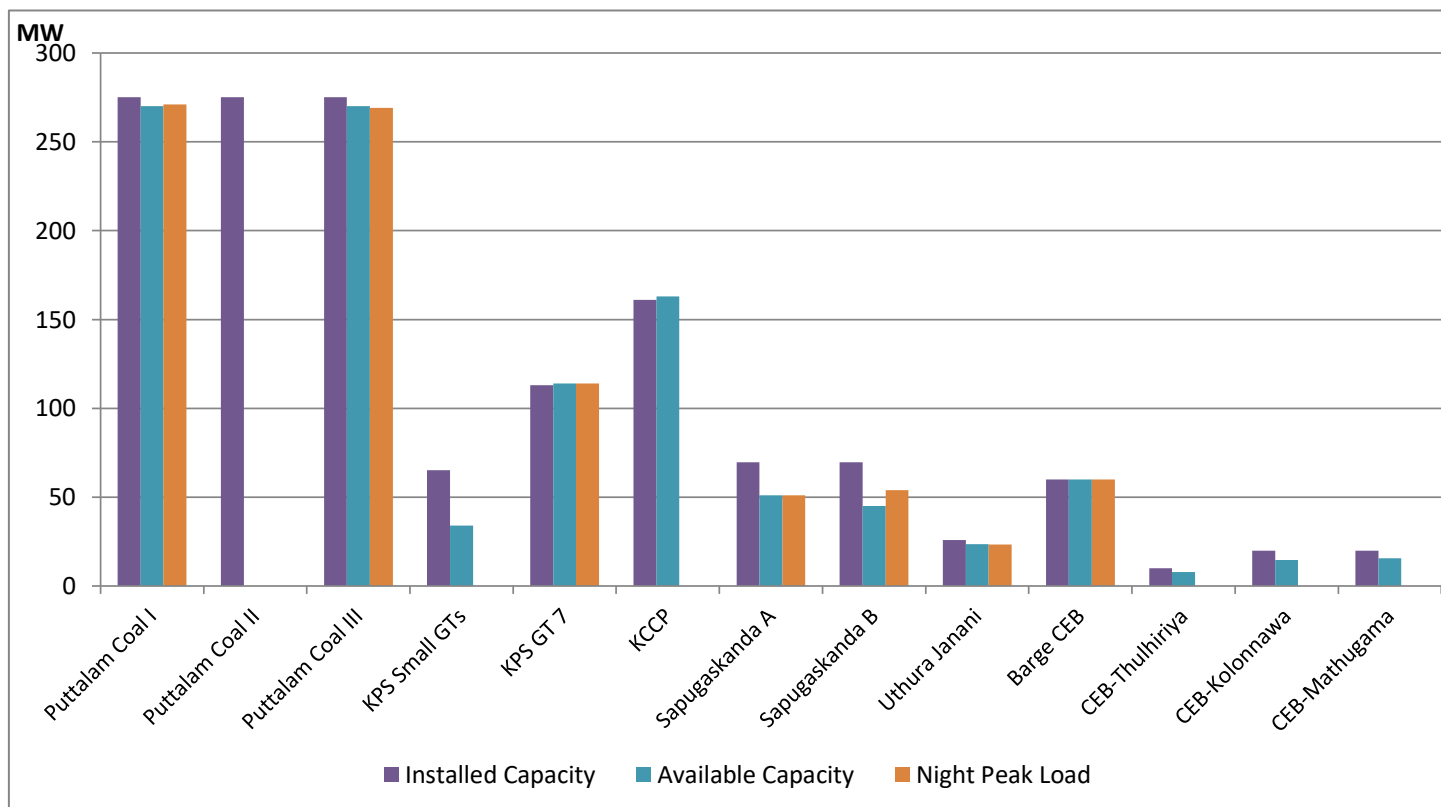
October 25, 2021



Available Generation is estimated based on plant availability at 6.00am on

October 26, 2021

CEB owned Thermal Plant Loading at the Night Peak



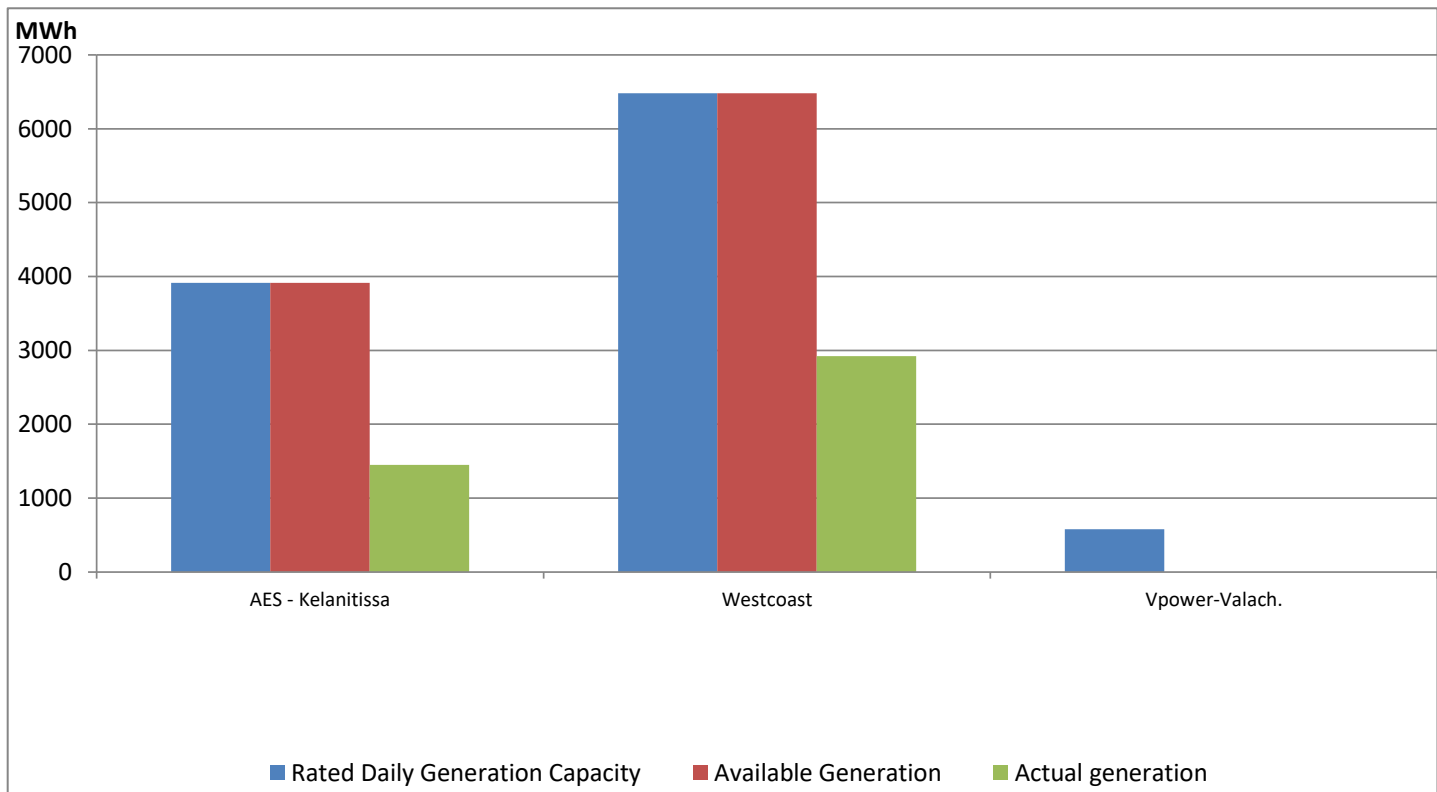
Note- Plant availability is recorded at 6.00 am on

October 26, 2021

IPP owned Thermal Plant Dispatch

October 25, 2021

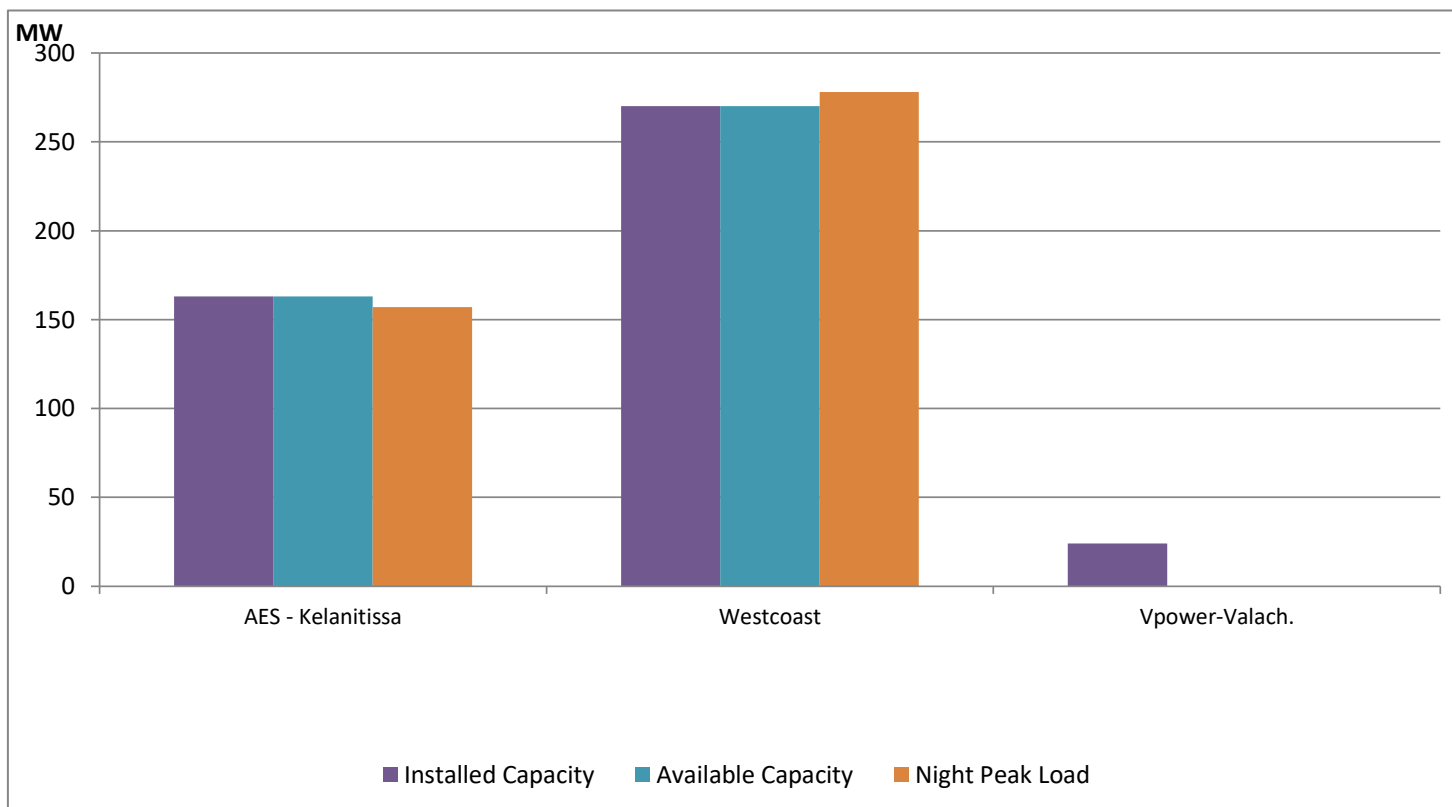
ACE Embilipitiya, ACE Matara, Asia Power, V Power Pallekale, Vpower Galle, V Power Horana, Vpower Hambantota and Altaqa Mahiyanganaya are not available due to expiration of PPAs



Available Generation is estimated based on plant availability at 6.00am on

October 26, 2021

IPP owned Thermal Plant Loading at the Night Peak

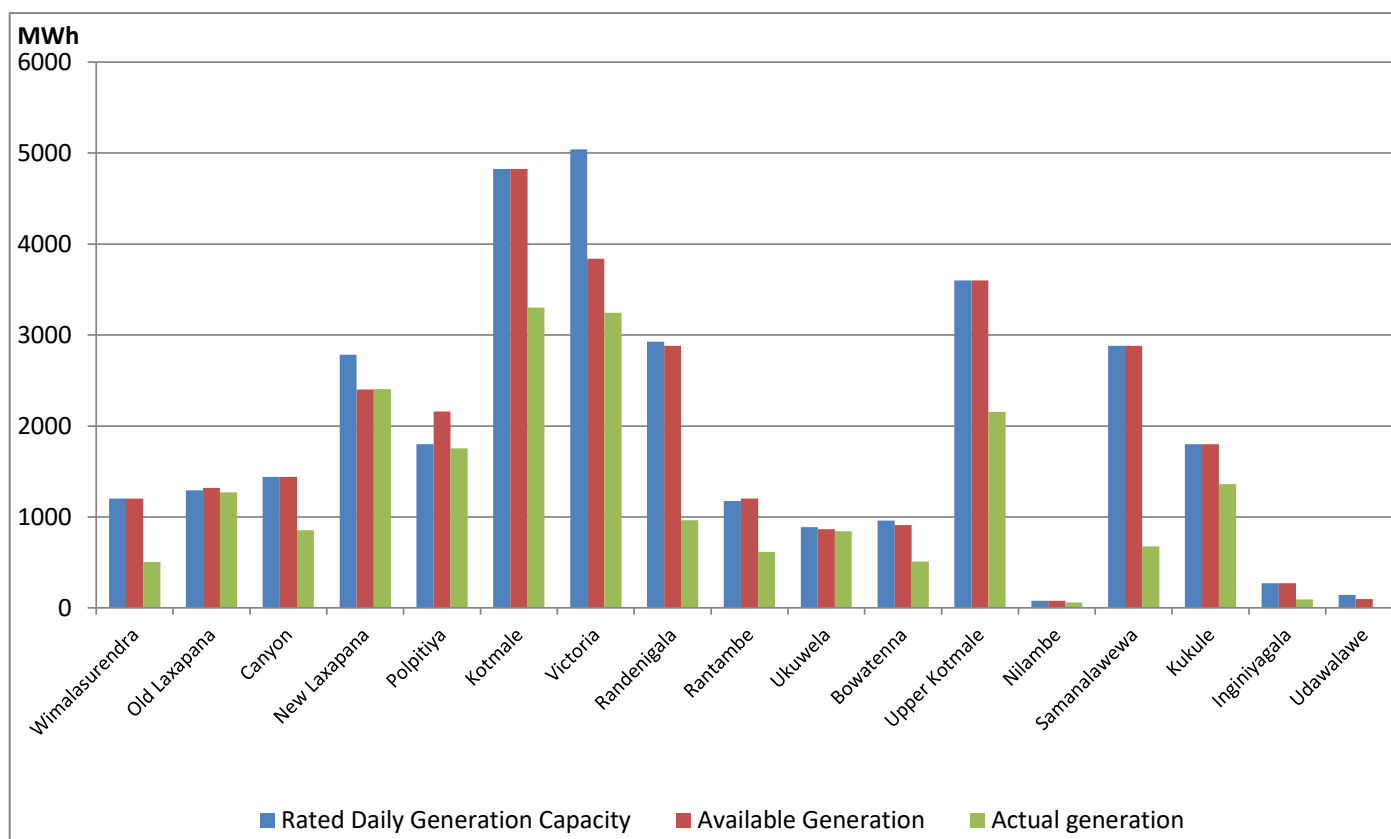


Note- Plant availability is recorded at 6.00 am on

October 26, 2021

Major Hydro Plant Dispatch

October 25, 2021

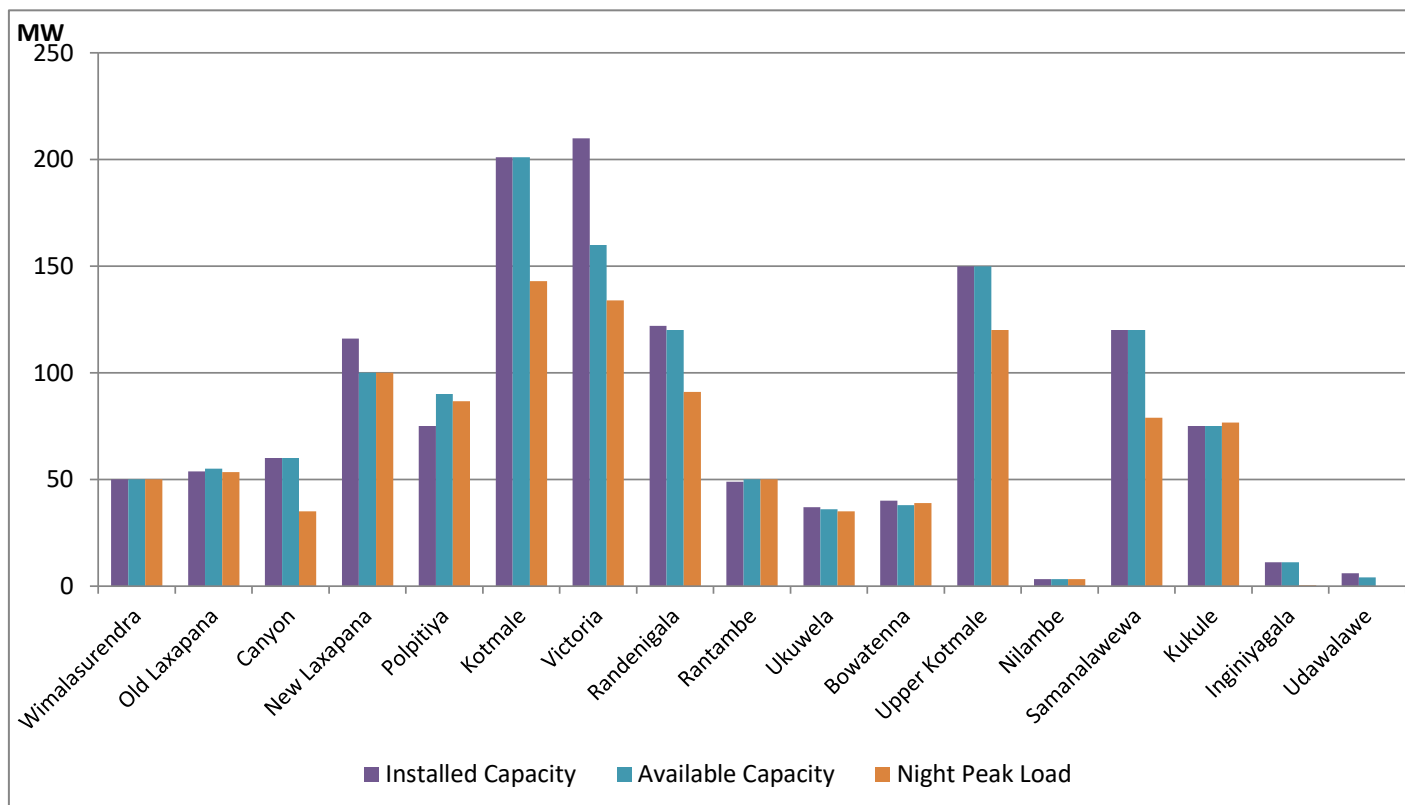


Note- Available Generation is estimated based on plant availability at 6.00am on

October 26, 2021

Major Hydro Plant Loading at Night Peak

October 25, 2021



Note- Plant availability is recorded at 6.00 am on

October 26, 2021

Summary of Major Plant performance

| Plant | Installed Capacity | Plant Availability | Night peak Load | Plant Dispatch |
|--------------------|--------------------|--------------------|-----------------|----------------|
| | (MW) | (MW) | (MW) | (GWh) |
| Wimalasurendra | 50.00 | 50.00 | 50.00 | 504.00 |
| Old Laxapana | 53.80 | 55.00 | 53.50 | 1,271.00 |
| Canyon | 60.00 | 60.00 | 35.00 | 853.00 |
| New Laxapana | 116.00 | 100.00 | 100.00 | 2,405.00 |
| Polpitiya | 75.00 | 90.00 | 86.70 | 1,755.00 |
| Kotmale | 201.00 | 201.00 | 143.00 | 3,300.00 |
| Victoria | 210.00 | 160.00 | 134.00 | 3,246.00 |
| Randenigala | 122.00 | 120.00 | 91.00 | 965.00 |
| Rantambe | 49.00 | 50.00 | 50.00 | 614.00 |
| Ukuwela | 37.00 | 36.00 | 35.00 | 844.00 |
| Bowatenna | 40.00 | 38.00 | 39.00 | 508.00 |
| Upper Kotmale | 150.00 | 150.00 | 120.00 | 2,156.00 |
| Nilambe | 3.20 | 3.20 | 3.20 | 60.00 |
| Samanalawewa | 120.00 | 120.00 | 79.00 | 675.00 |
| Kukule | 75.00 | 75.00 | 76.70 | 1,359.00 |
| Inginiyagala | 11.25 | 11.25 | 0.40 | 92.00 |
| Udawalawe | 6.00 | 4.00 | - | - |
| Puttalam Coal I | 275.00 | 270.00 | 271.00 | 6,393.00 |
| Puttalam Coal II | 275.00 | - | - | - |
| Puttalam Coal III | 275.00 | 270.00 | 269.00 | 6,402.00 |
| KPS Small GTs | 65.20 | 34.00 | - | - |
| KPS GT 7 | 113.00 | 114.00 | 114.00 | 144.00 |
| KCCP | 161.00 | 163.00 | - | - |
| Sapugaskanda A | 69.60 | 51.00 | 51.00 | 902.00 |
| Sapugaskanda B | 69.60 | 45.00 | 54.00 | 904.00 |
| Uthura Janani | 26.01 | 23.50 | 23.40 | 399.00 |
| Barge CEB | 60.00 | 60.00 | 60.00 | 1,112.00 |
| CEB-Thulhiriya | 10.00 | 8.00 | - | - |
| CEB-Kolonnawa | 20.00 | 14.60 | - | - |
| CEB-Mathugama | 20.00 | 15.60 | - | - |
| AES - Kelanitissa | 163.00 | 163.00 | 157.00 | 1,449.00 |
| Westcoast | 270.00 | 270.00 | 278.00 | 2,921.00 |
| Vpower-Valach. | 24.00 | - | - | - |
| Solar | 68.00 | | - | 239.00 |
| Wind | 248.00 | | 7.20 | 200.00 |
| MH and BM | 441.00 | | 84.00 | Not available |
| Total without NCRE | 3,538.46 | 2,825.15 | | |

Night peak load of MH and BM only include loading of Minihydro plants of total capacity MW

129

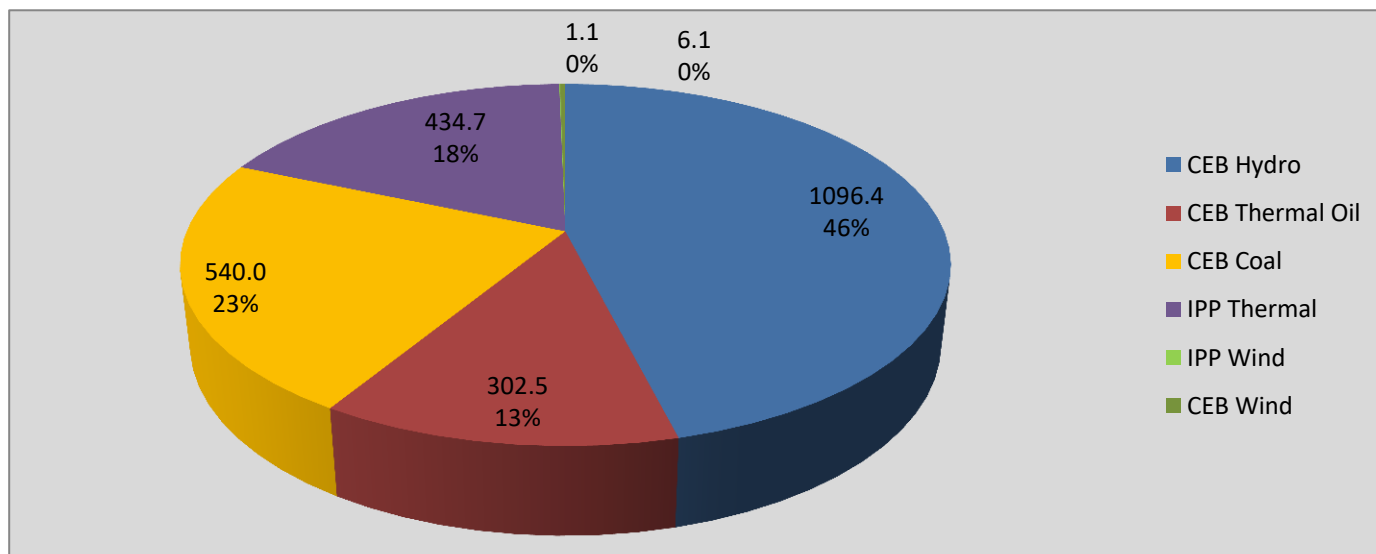
Installed capacity of Solar, wind, Mini-hydro and Biomass plants are as of end of December 2019

Plant availability is the availability recorded at 6 am on

October 26, 2021

Contribution to the Night Peak in MW

October 25, 2021

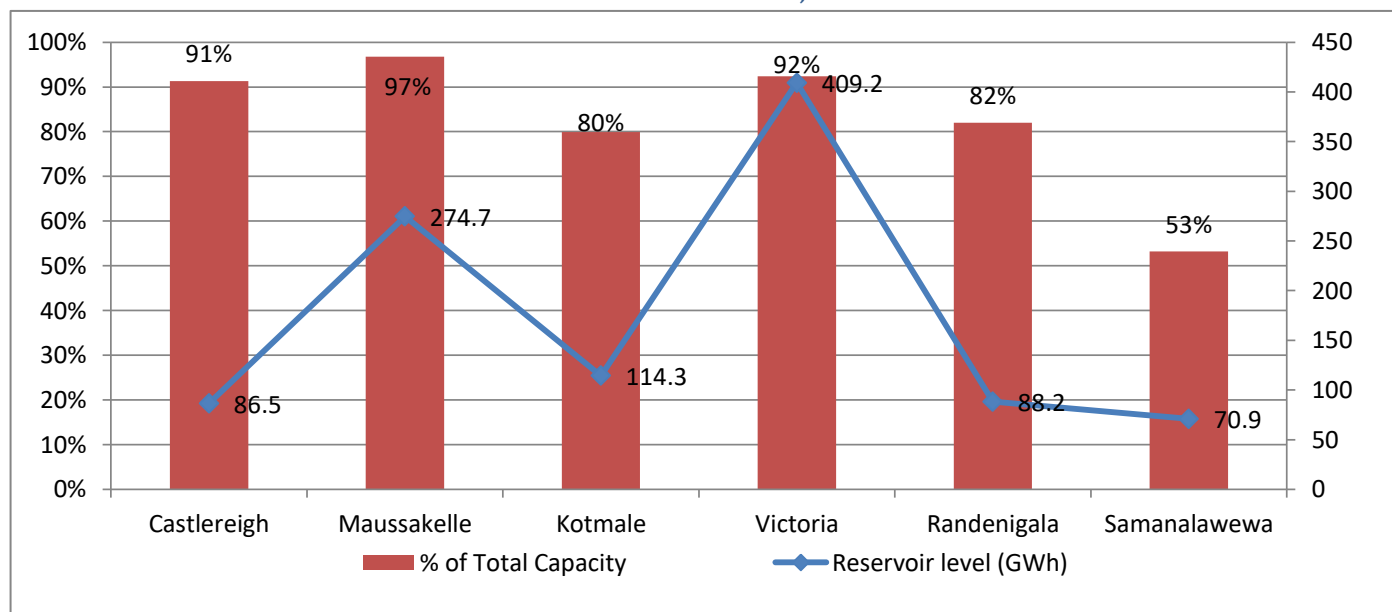


Night Peak* 2,380.7 MW
 Day Peak 2,200.4 MW
 Minimum Demand 1,200.1 MW

Notes: Above figures are excluding contribution from Roof Top Solar, 1MW solar, certain Wind plants and all Mini Hydro plants and Biomass plants

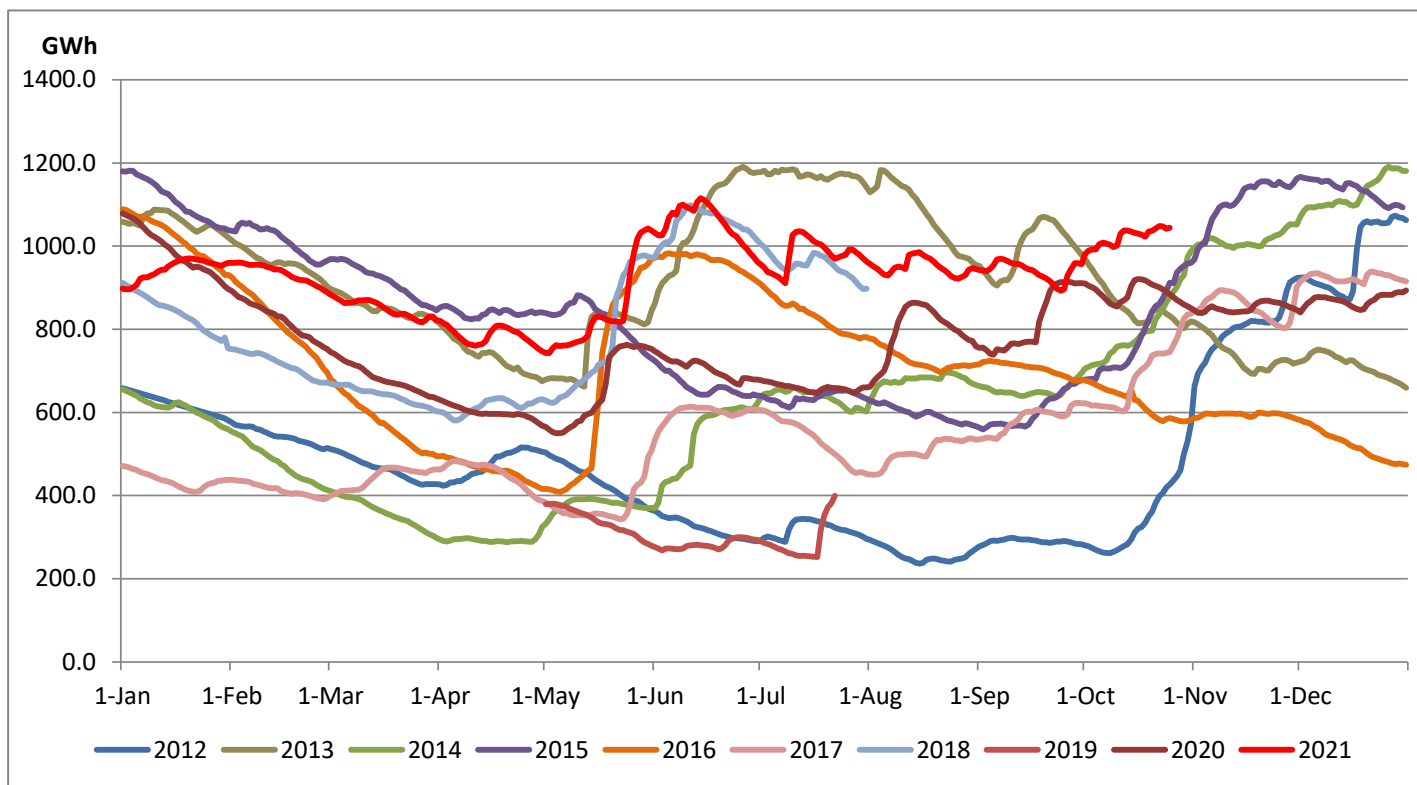
* in addition to the night peak figure presented above, Kerawalapitiya waste heat plant, other MiniHydro and Biomass Plants of installed capacity 129.00 MW has recorded total 94.90 MW at night peak

Reservoir Levels - as at 06.00 Hr on October 26, 2021



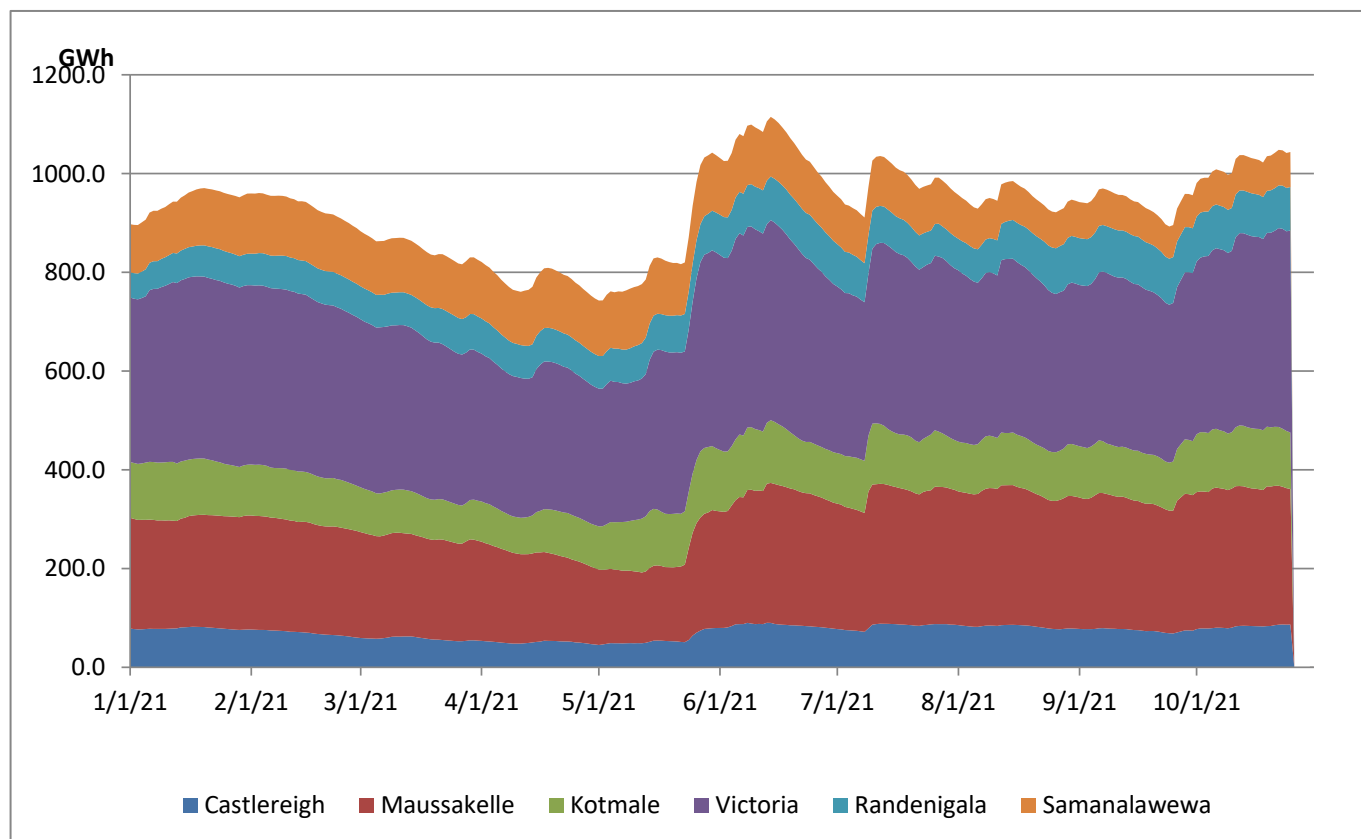
Total Reservoir Level(GWh) 1043.8
 % of Total capacity 86.6%

Comparison of Total Reservoir Storage Levels with Past Years

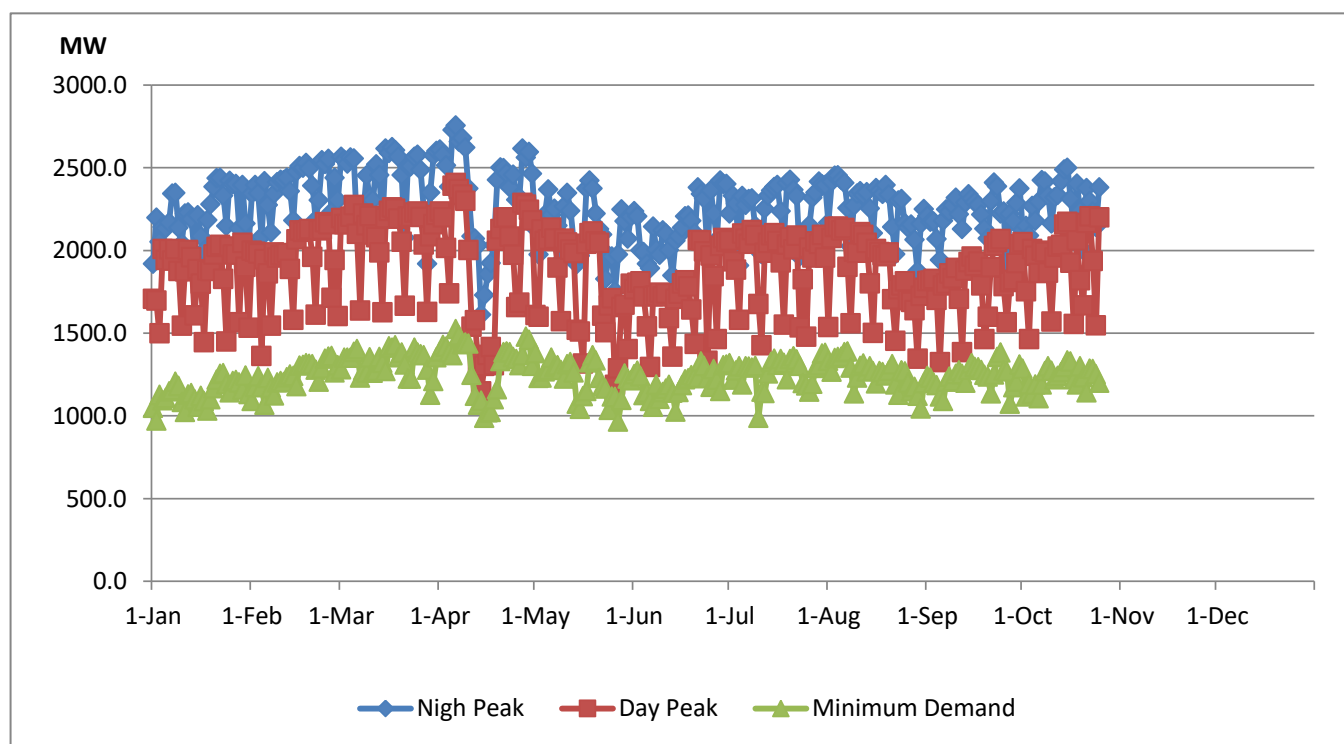


Data for 2018 and 2019 are only available for part of year.

Variation of Major Hydro Reservoir Levels in the current year (GWh)



Variation of Demand during the current year



Notes:

The night peak is excluding the contribution from Minihydro and biomass power plants

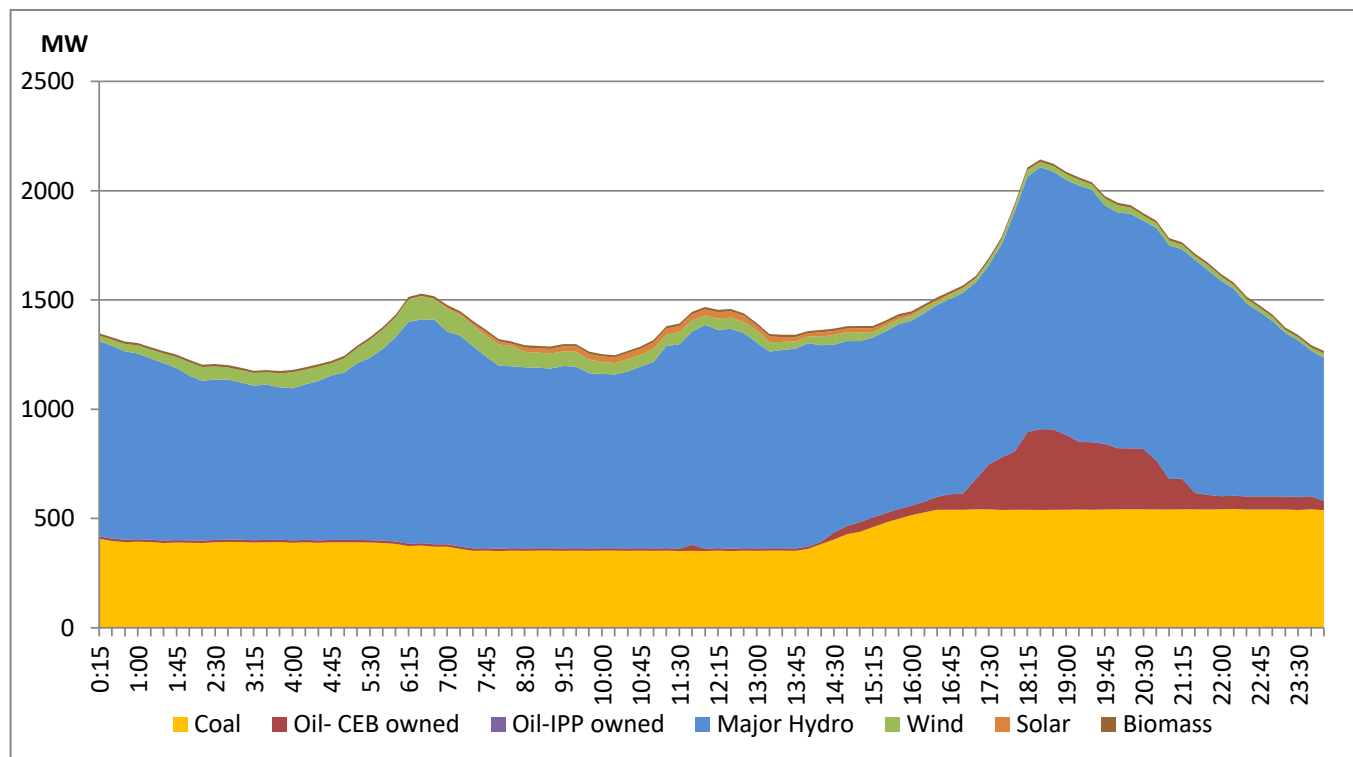
Day peak and minimum demand graphs includes the contribution from Moragahakanda power plant

All graphs include the contribution from telemetered solar and wind plants

Daily Load Curve of the Previous day

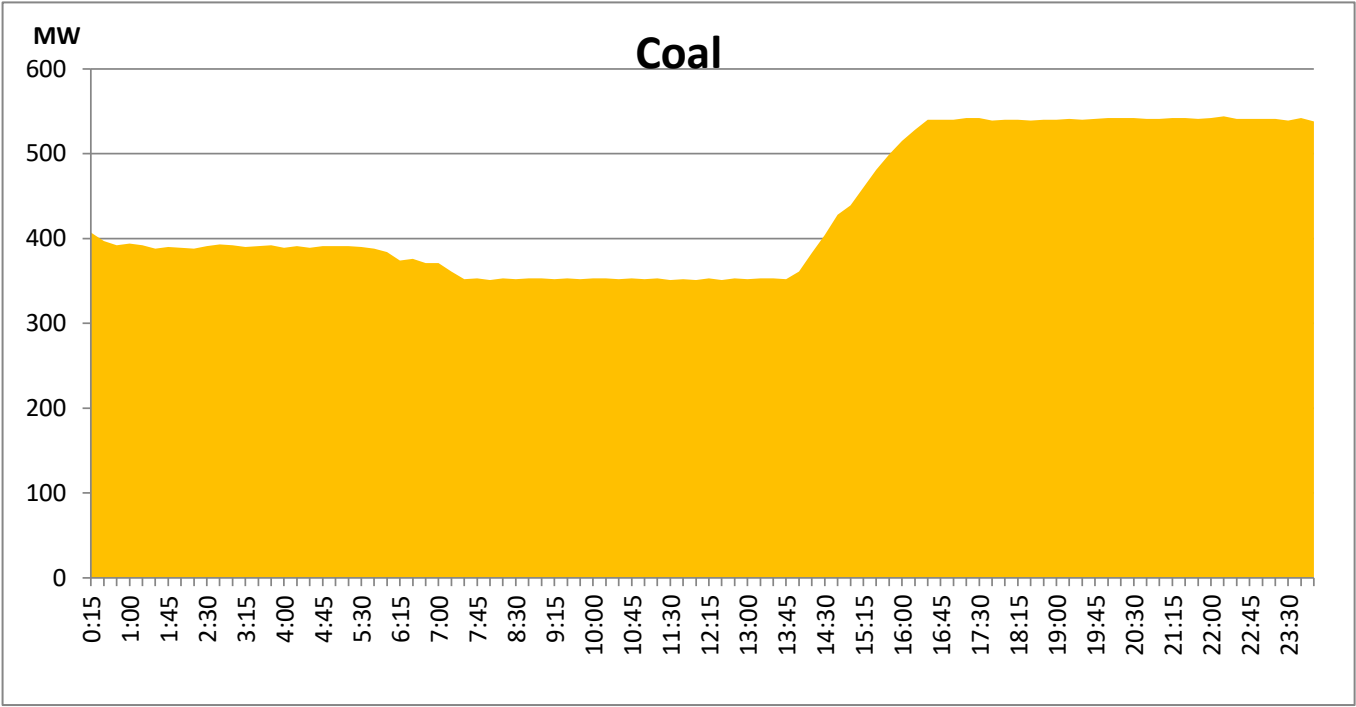
October 24, 2021

Solar and wind data is based on Telemetered Power Stations only



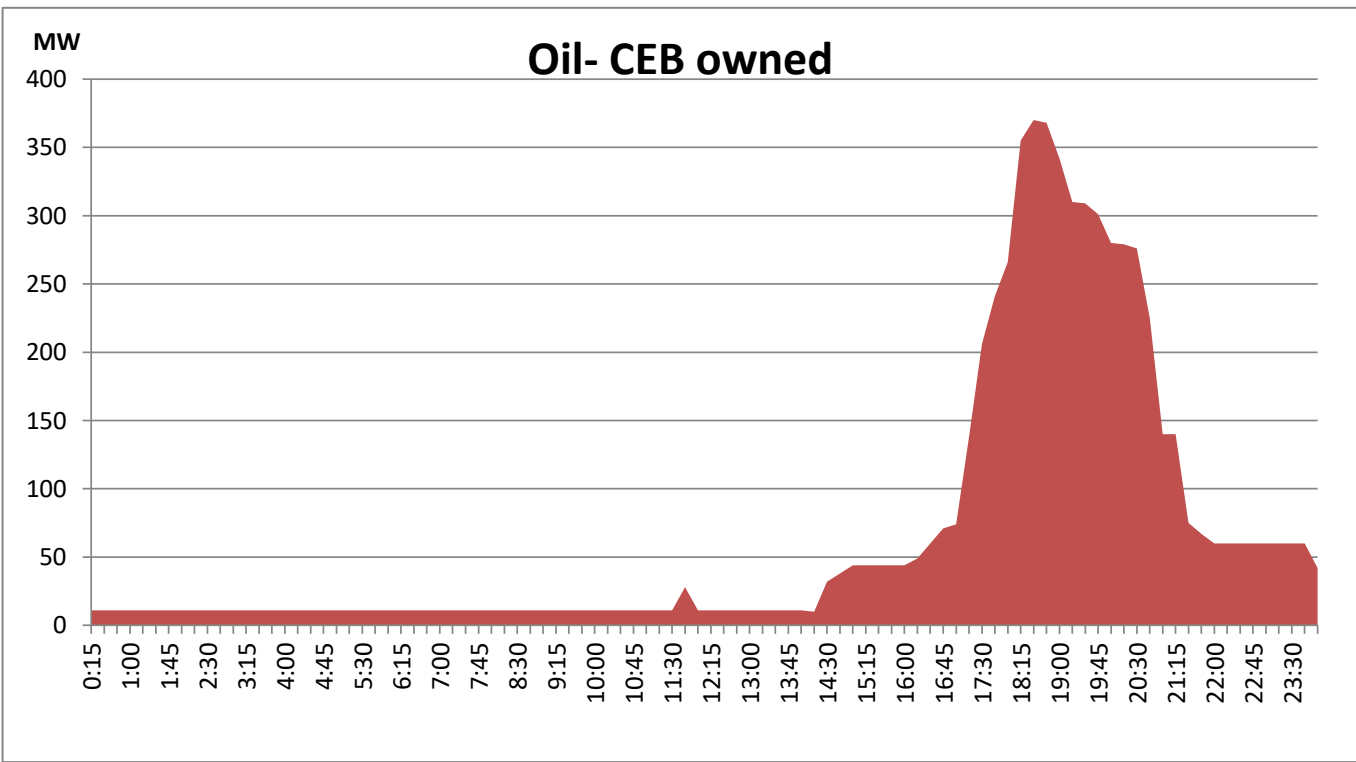
Coal Generation during the Previous day

October 24, 2021



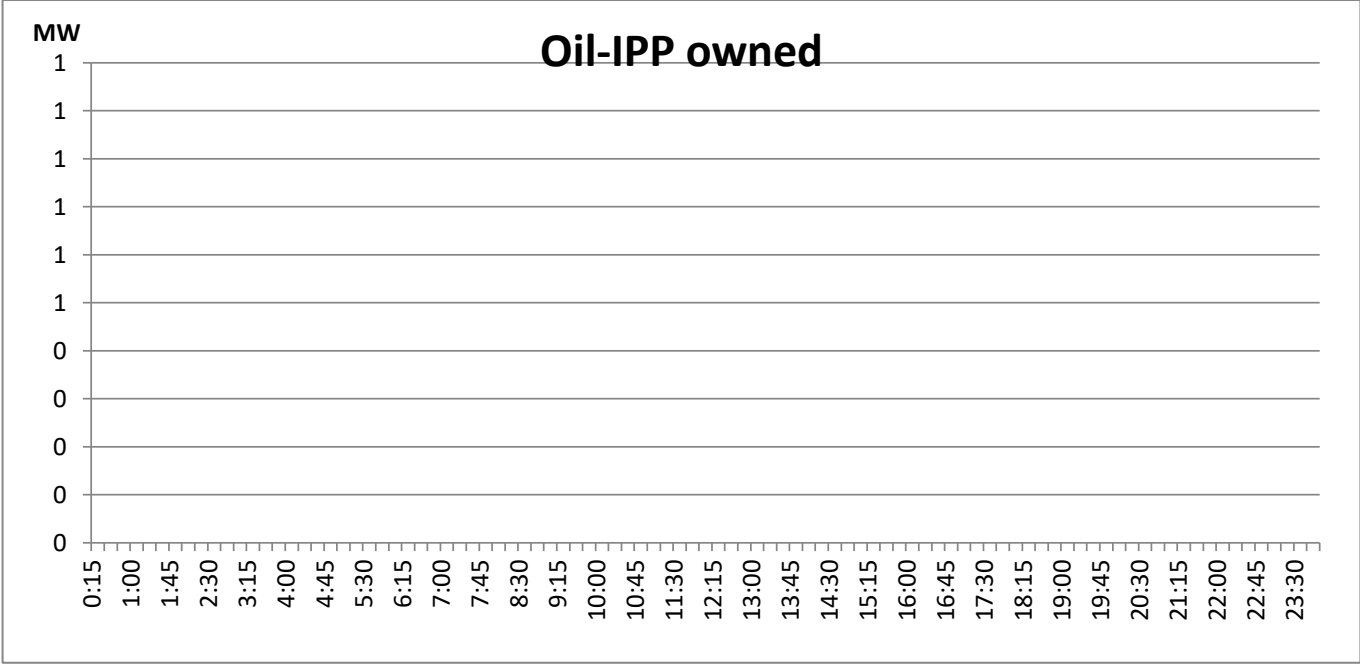
CEB Oil Plant Generation during the Previous day

October 24, 2021



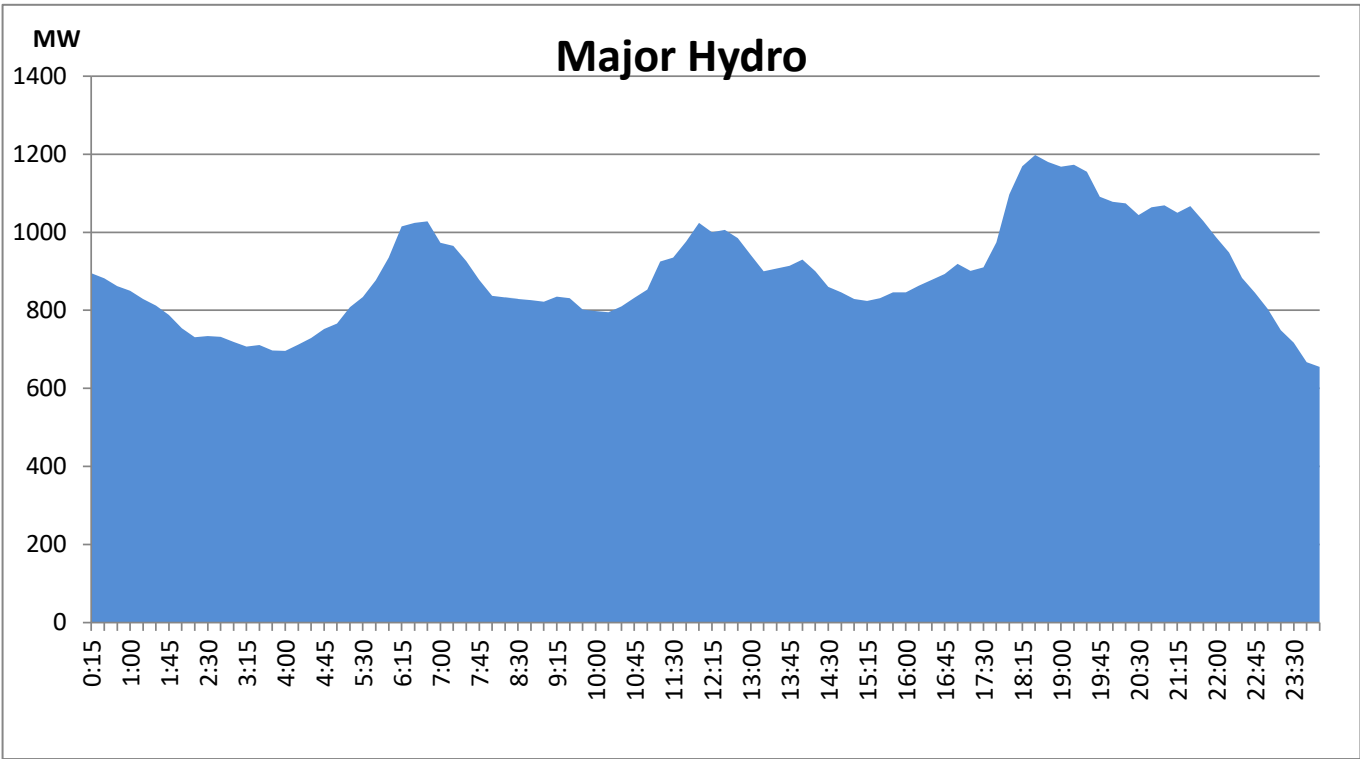
IPP Oil Plant Generation during the Previous day

October 24, 2021



Major Hydro Generation during the Previous day

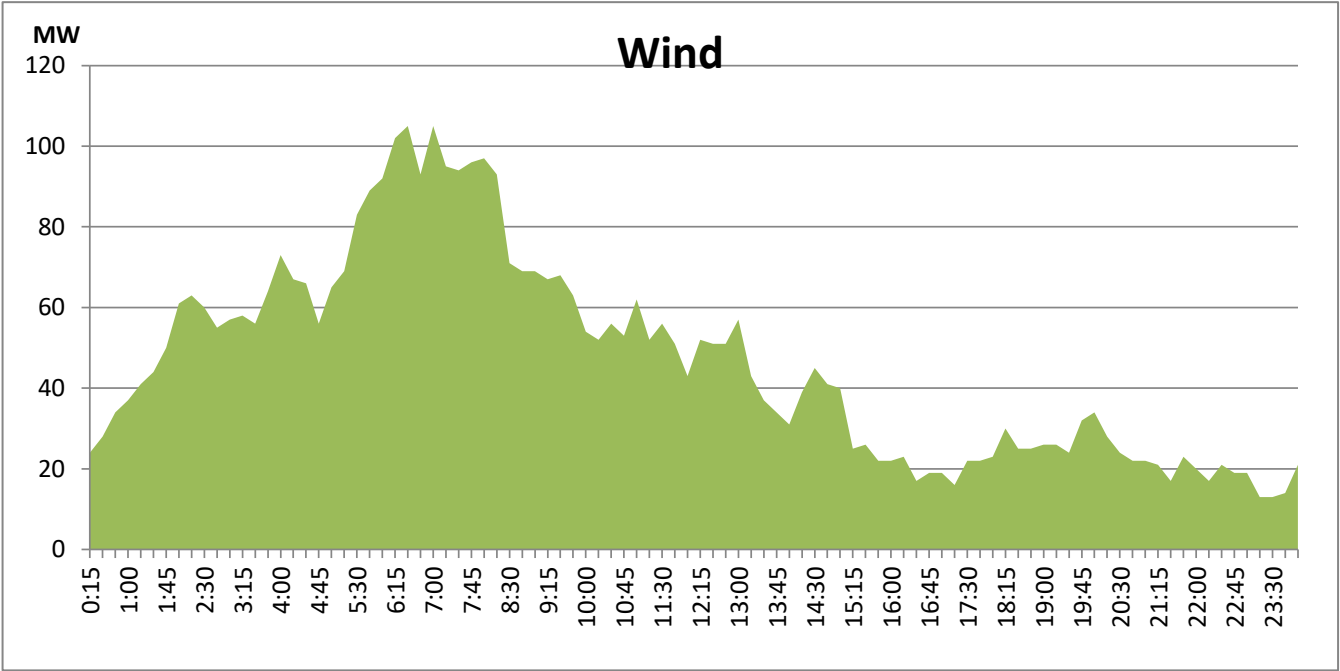
October 24, 2021



Wind Generation during the Previous day

October 24, 2021

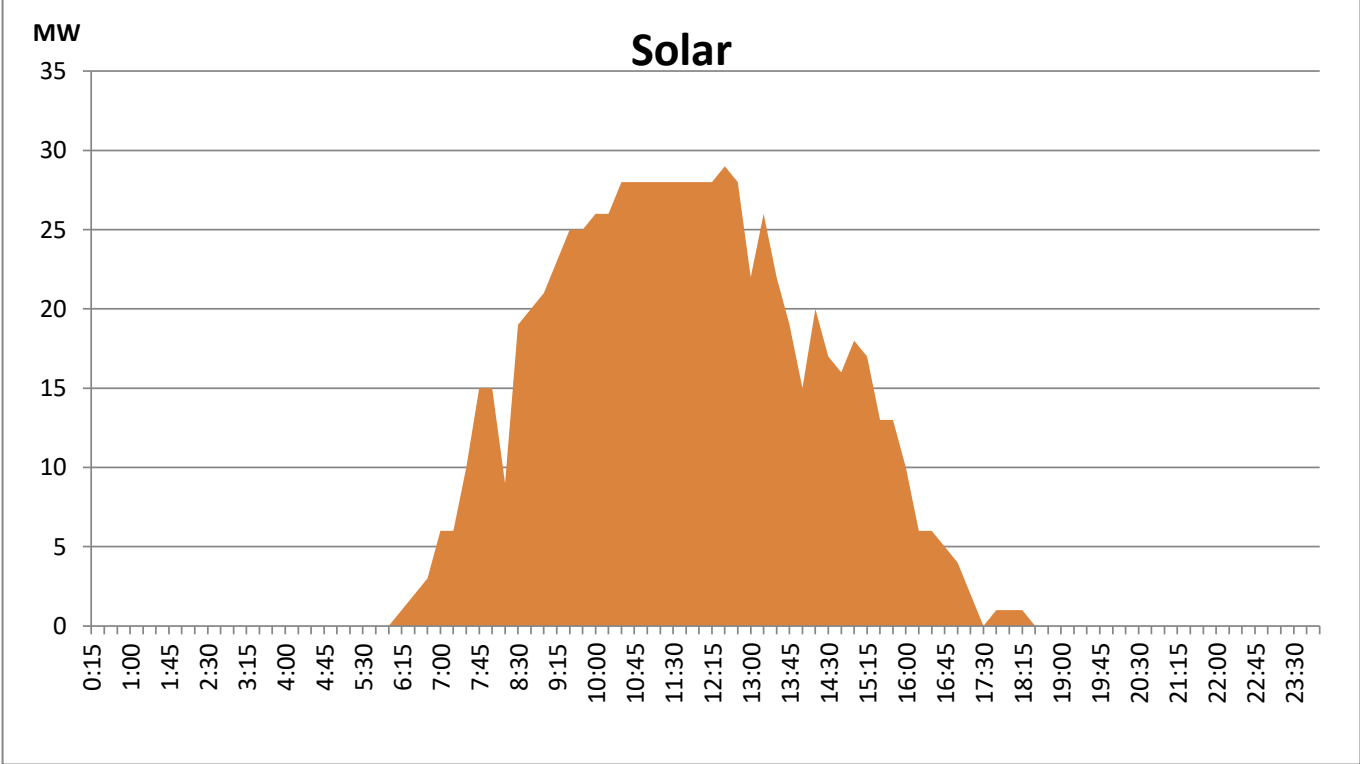
Based on Telemetered Power Stations only



Solar Generation during the Previous day

October 24, 2021

Based on Telemetered Power Stations only



Thermal Plant Fuel types

| Power Station | Primary Fuel |
|--------------------------------|-----------------|
| CEB Thermal | |
| Sapugaskanda 1 | Heavy Fuel |
| Sapugaskanda 2 | Heavy Fuel |
| Kelanitissa Small Gas Turbines | Auto Diesel |
| GT 7 - Kelanitissa | Auto Diesel |
| Kelanitissa CCY | Naptha & Diesel |
| Lakvijaya 1 | Coal |
| Lakvijaya 2 | Coal |
| Lakvijaya 3 | Coal |
| Uthuru Janani | Heavy Fuel |
| Barge CEB | Furnace Oil |
| | |

| Power Station | Primary Fuel |
|-----------------|----------------------------|
| Private Thermal | |
| Sojitz - | Auto Diesel |
| West Coast | Low Sulphur Furnace oil |
| | |
| | |

Major Incidents during the day -as reported by CEB morning of

October 26, 2021

- 1) N'Anuradhapura - Trinco 132kV cct 02 tripped & A/R at 12:39hrs due to operation of distance protection from N'Anuradhapura end.
- 2) N'Anuradhapura - Puttalam 132kV cct 01 tripped & A/R at 14:16hrs due to operation of distance protection from N'Anuradhapura end.
- 3) Polpitiya unit 02 made force shut down at 18:39hrs and 22:17hrs, respectively due to water leak in power house. Polpitiya unit 02 resumed generation at 21:27hrs and 00:04hrs (26/10/2021), respectively.
- 4) Kukule both units tripped at 1:14hrs (26/10/2021) due to control card error rejecting 75MW from system. Kukule both units made available at 1:47hrs (29/10/2021).