

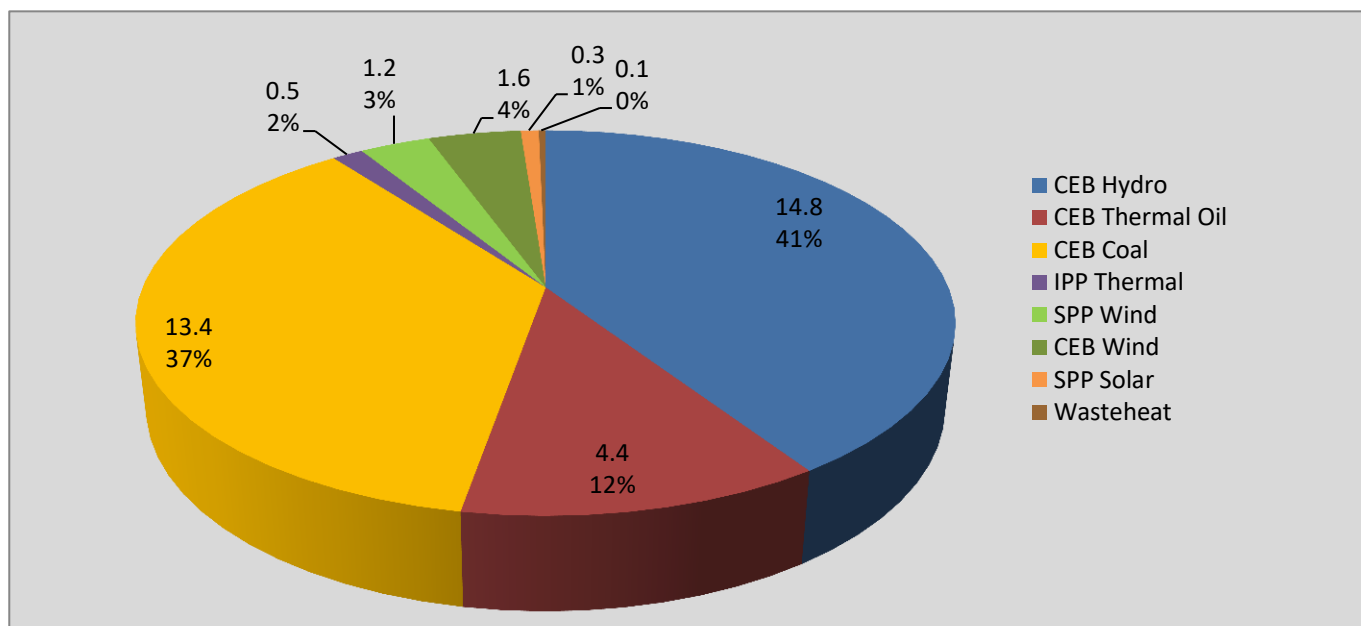
# **Generation and Reservoirs Statistics**

**October 10, 2021**



PUBLIC UTILITIES COMMISSION OF SRI LANKA

## Daily Generation Mix in MWh



### Total Generation

**36,401 MWh**

Note: Above data is Excluding contribution from Roof Top Solar, 1MW solar, Mini Hydro plants and Biomass/ waste heat (except 10 MW Waste heat plant at Kerawalapitiya) plants

## Cumulative Dispatch

Note: Following data is Excluding contribution from Roof Top Solar, 1MW solar, Mini Hydro plants and Biomass/ waste heat (except 10 MW Waste heat plant at Kerawalapitiya) plants

### For Current Month

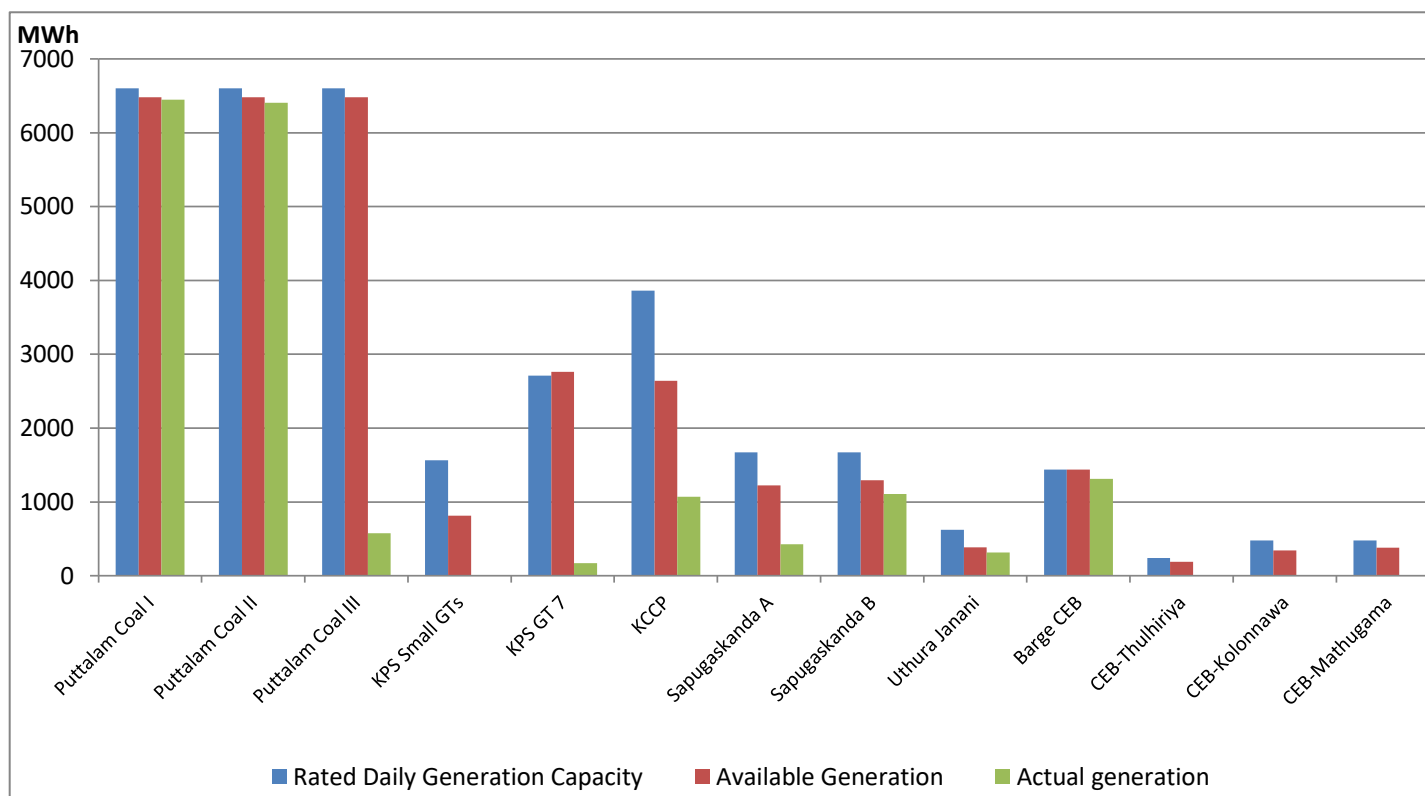
Category	Dispatch (GWh)	
CEB Hydro	177.4	45.79%
CEB Thermal Oil	31.3	8.07%
CEB Coal	127.8	32.97%
IPP Thermal	27.4	7.06%
SPP Wind	8.3	2.14%
CEB Wind	11.2	2.90%
SPP Solar	2.4	0.62%
SPP Waste Heat	1.8	0.46%
<b>Total</b>	<b>387.5</b>	

### For Current Year

Category	Dispatch (GWh)	
CEB Hydro	3,868.1	34.00%
CEB Thermal Oil	1,006.8	8.85%
CEB Coal	4,634.2	40.74%
IPP Thermal	1,255.5	11.04%
SPP Wind	190.2	1.67%
CEB Wind	262.5	2.31%
SPP Solar	76.0	0.67%
SPP Waste Heat	28.9	0.25%
<b>Total</b>	<b>11,376.3</b>	

## CEB owned Thermal Plant Dispatch

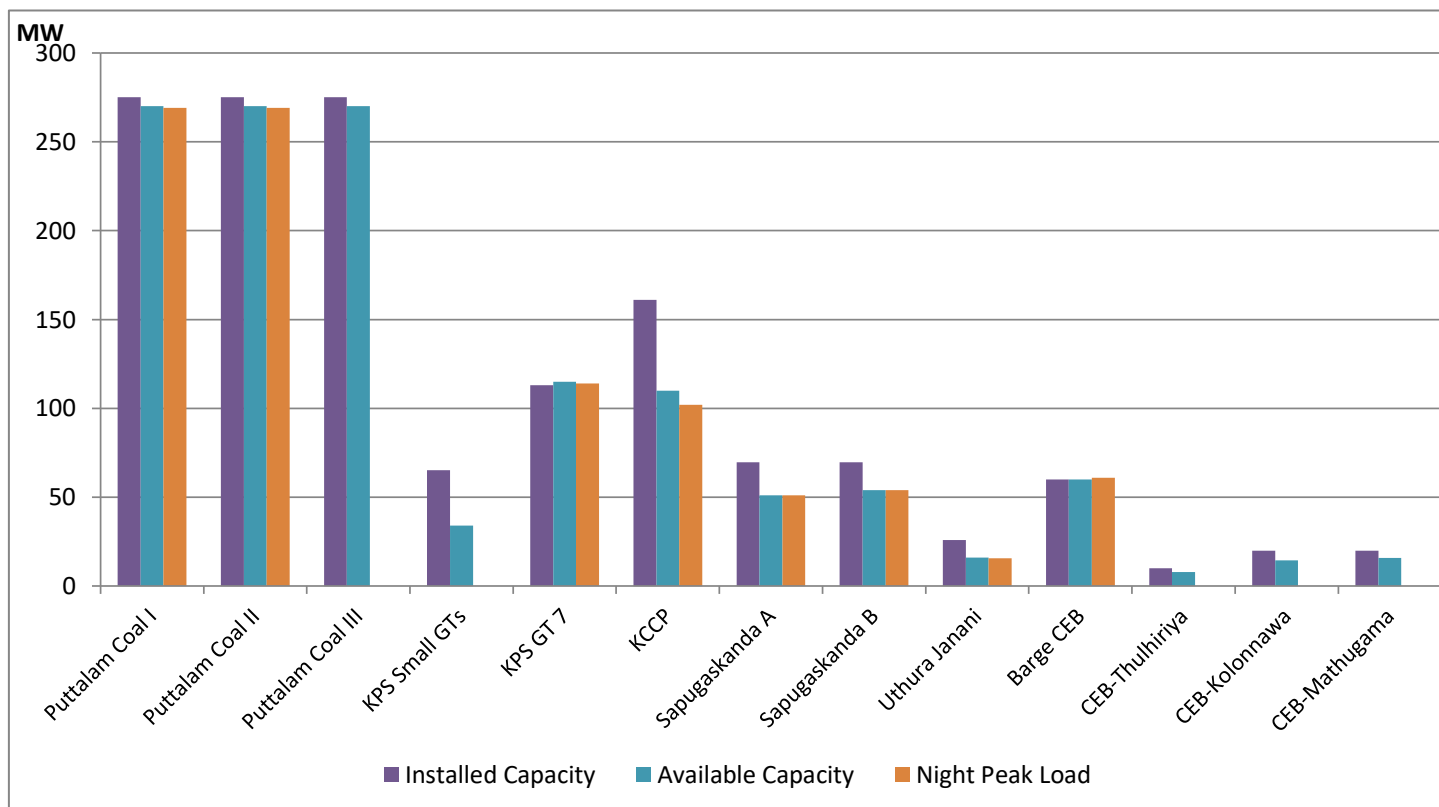
October 10, 2021



Available Generation is estimated based on plant availability at 6.00am on

October 11, 2021

## CEB owned Thermal Plant Loading at the Night Peak



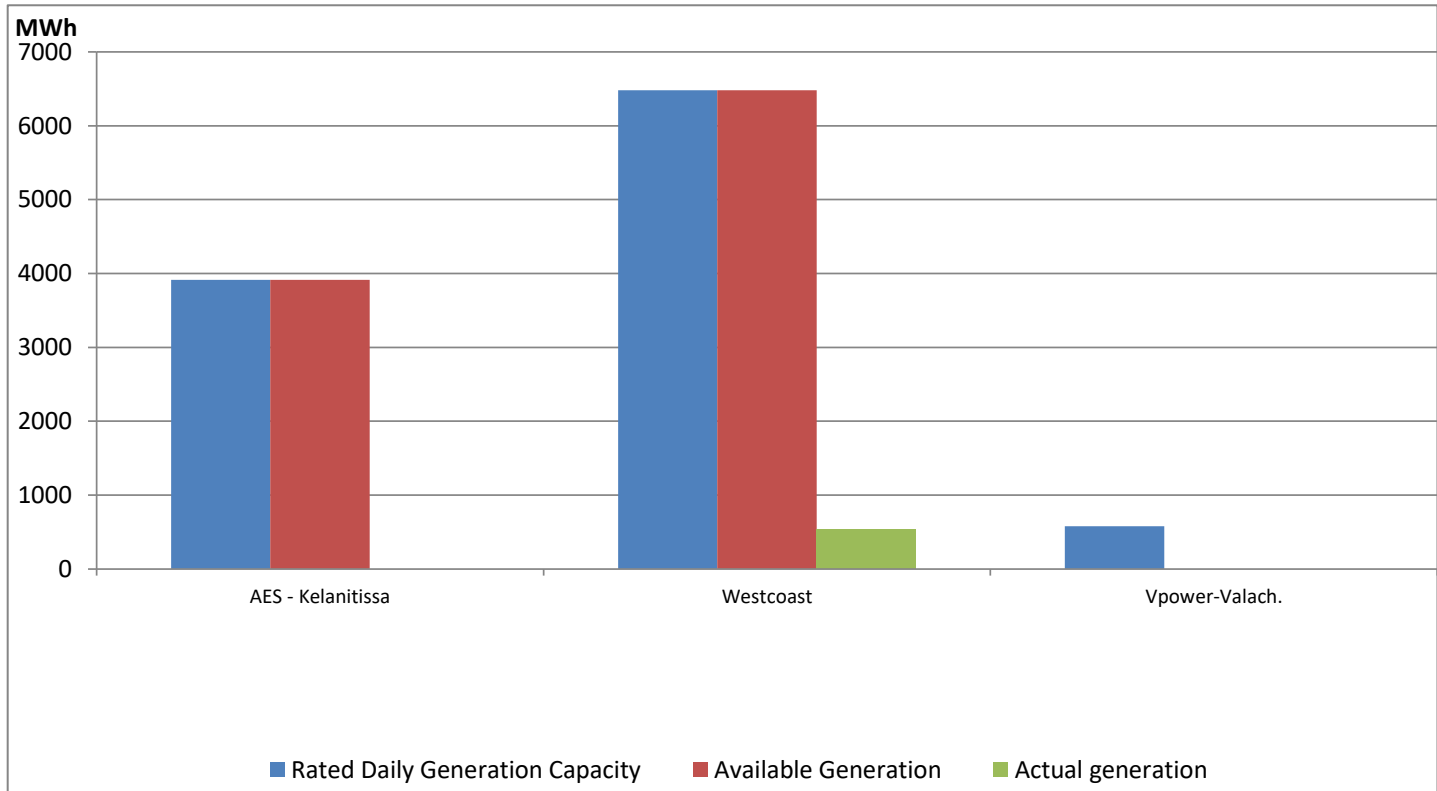
Note- Plant availability is recorded at 6.00 am on

October 11, 2021

## IPP owned Thermal Plant Dispatch

October 10, 2021

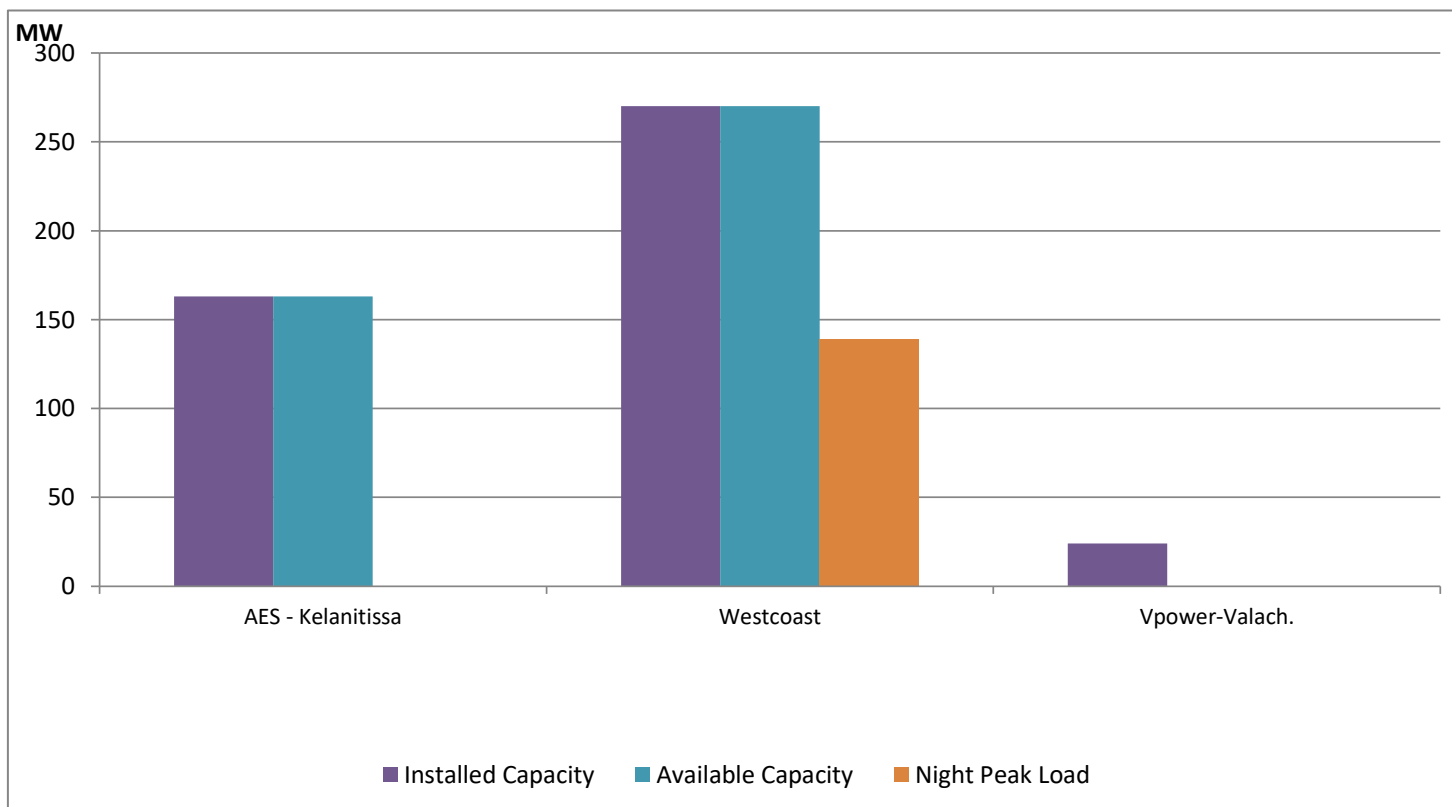
ACE Embilipitiya, ACE Matara, Asia Power, V Power Pallekale, Vpower Galle, V Power Horana, Vpower Hambantota and Altaqa Mahiyanganaya are not available due to expiration of PPAs



Available Generation is estimated based on plant availability at 6.00am on

October 11, 2021

## IPP owned Thermal Plant Loading at the Night Peak

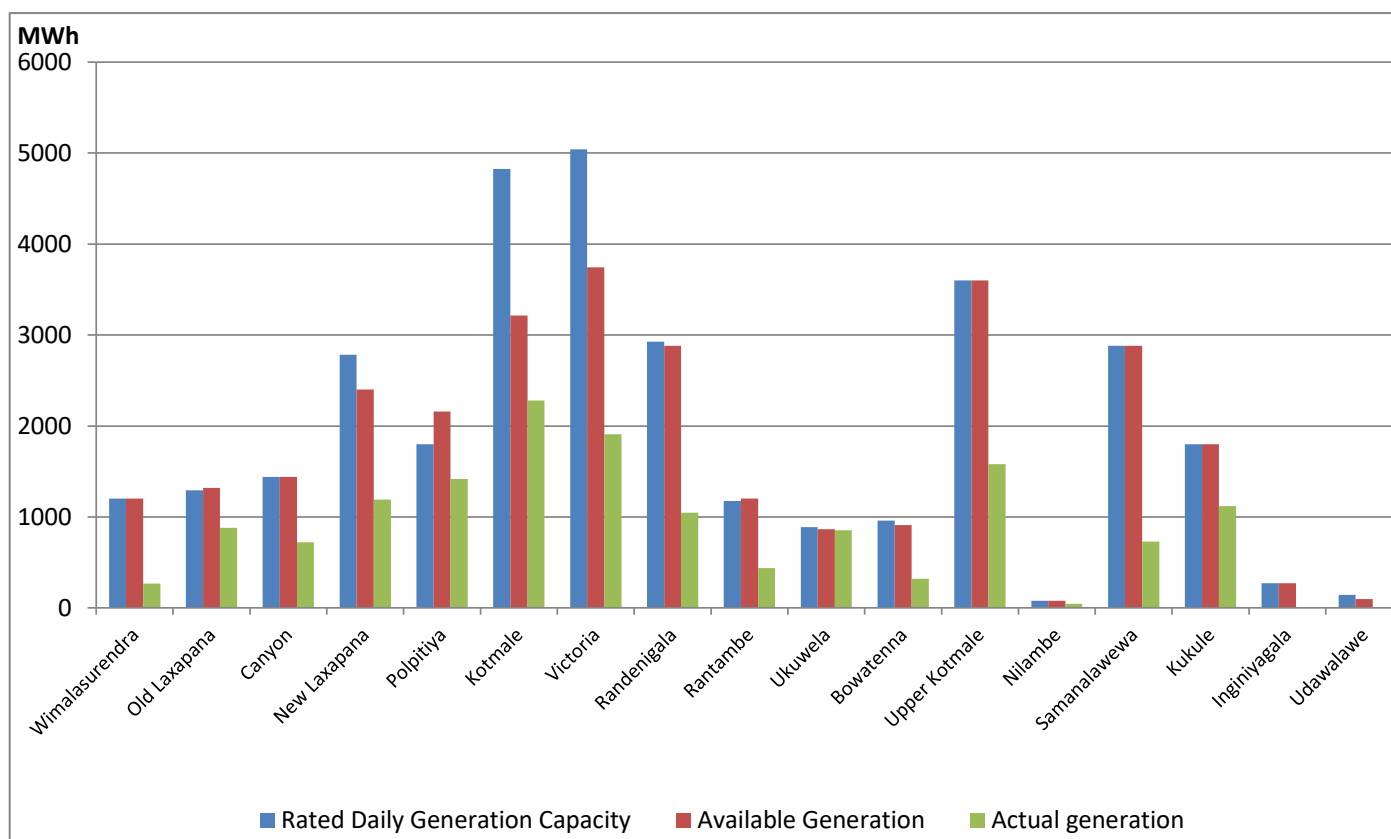


Note- Plant availability is recorded at 6.00 am on

October 11, 2021

## Major Hydro Plant Dispatch

October 10, 2021

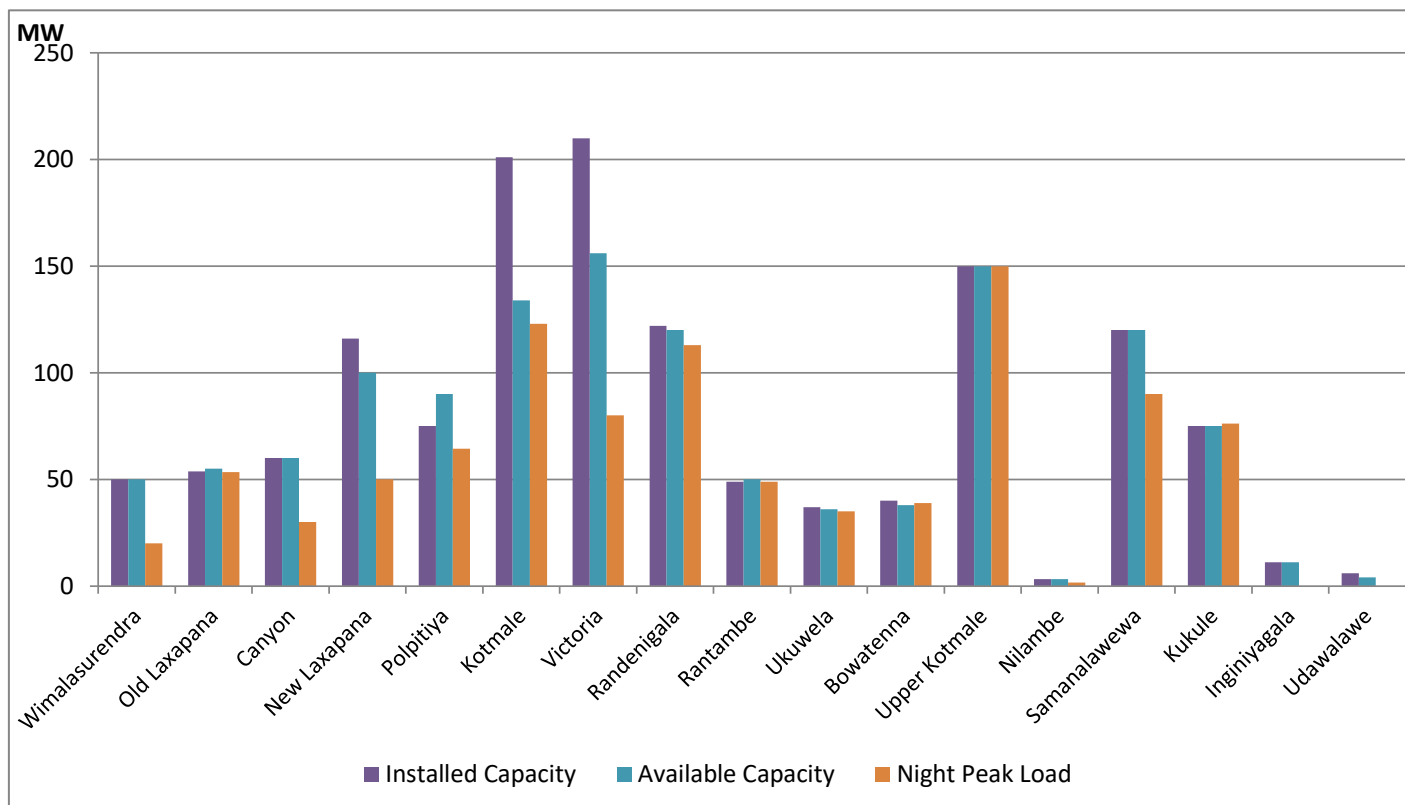


Note- Available Generation is estimated based on plant availability at 6.00am on

October 11, 2021

## Major Hydro Plant Loading at Night Peak

October 10, 2021



Note- Plant availability is recorded at 6.00 am on

October 11, 2021

Summary of Major Plant performance

Plant	Installed Capacity	Plant Availability	Night peak Load	Plant Dispatch
	(MW)	(MW)	(MW)	(GWh)
Wimalasurendra	50.00	50.00	20.00	268.00
Old Laxapana	53.80	55.00	53.50	881.00
Canyon	60.00	60.00	30.00	723.00
New Laxapana	116.00	100.00	50.00	1,189.00
Polpitiya	75.00	90.00	64.40	1,419.00
Kotmale	201.00	134.00	123.00	2,280.00
Victoria	210.00	156.00	80.00	1,908.00
Randenigala	122.00	120.00	113.00	1,047.00
Rantambe	49.00	50.00	49.00	436.00
Ukuwela	37.00	36.00	35.00	855.00
Bowatenna	40.00	38.00	39.00	320.00
Upper Kotmale	150.00	150.00	150.00	1,582.00
Nilambe	3.20	3.20	1.60	46.00
Samanalawewa	120.00	120.00	90.00	729.00
Kukule	75.00	75.00	76.20	1,118.00
Inginiyagala	11.25	11.25	-	-
Udawalawe	6.00	4.00	-	-
Puttalam Coal I	275.00	270.00	269.00	6,448.00
Puttalam Coal II	275.00	270.00	269.00	6,407.00
Puttalam Coal III	275.00	270.00	-	576.00
KPS Small GTs	65.20	34.00	-	-
KPS GT 7	113.00	115.00	114.00	170.00
KCCP	161.00	110.00	102.00	1,070.00
Sapugaskanda A	69.60	51.00	51.00	429.00
Sapugaskanda B	69.60	54.00	54.00	1,109.00
Uthura Janani	26.01	16.00	15.60	314.00
Barge CEB	60.00	60.00	61.00	1,311.00
CEB-Thulhiriya	10.00	8.00	-	-
CEB-Kolonnawa	20.00	14.40	-	-
CEB-Mathugama	20.00	15.80	-	-
AES - Kelanitissa	163.00	163.00	-	-
Westcoast	270.00	270.00	139.00	534.00
Vpower-Valach.	24.00	-	-	-
Solar	68.00		-	312.00
Wind	248.00		114.90	2,805.00
MH and BM	441.00		83.00	Not available
Total without NCRE	3,538.46	2,973.65		

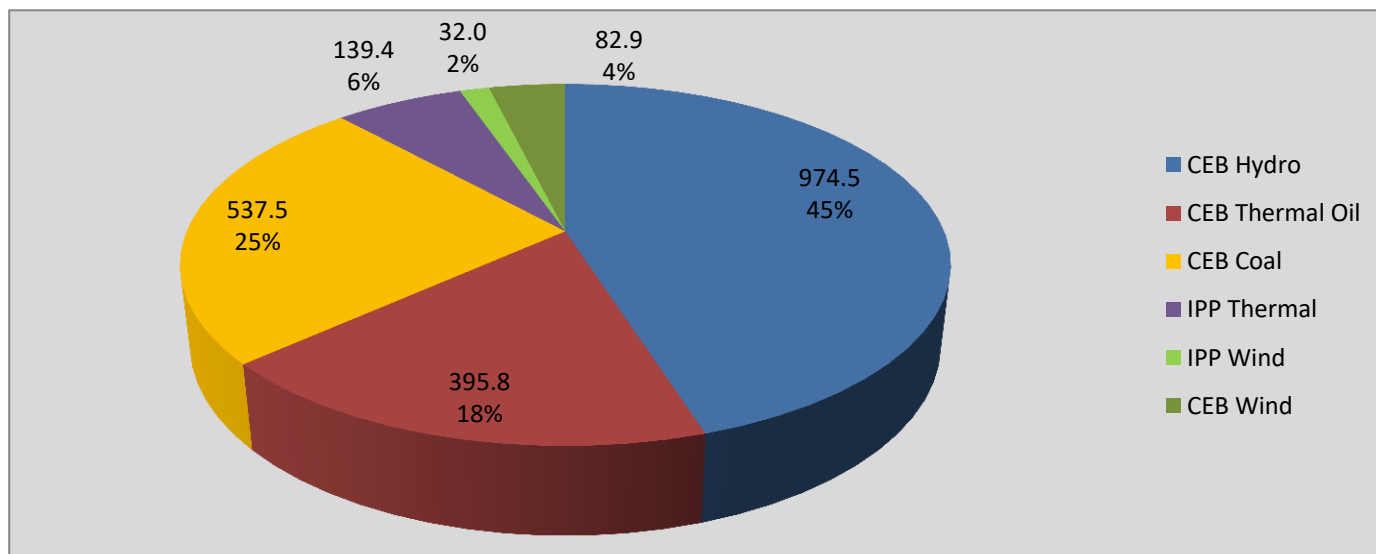
Night peak load of MH and BM only include loading of Minihydro plants of total capacity MW 181

Installed capacity of Solar, wind, Mini-hydro and Biomass plants are as of end of December 2019

Plant availability is the availability recorded at 6 am on October 11, 2021

## Contribution to the Night Peak in MW

October 10, 2021

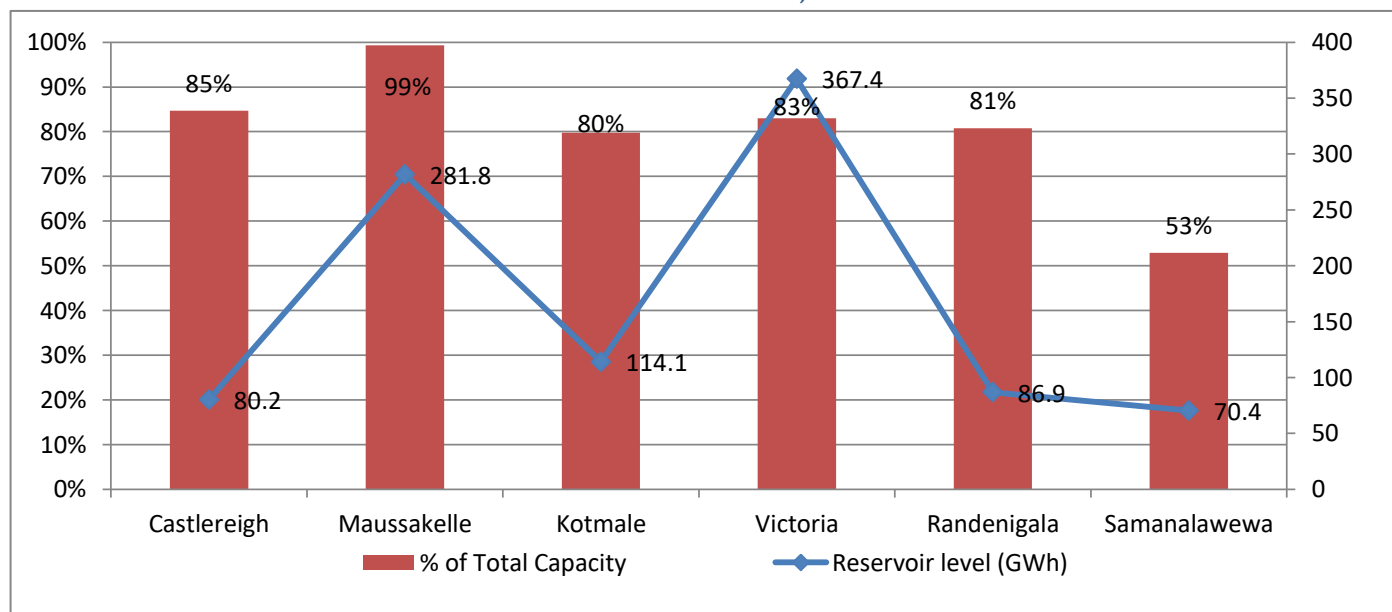


Night Peak\* 2,162.1 MW  
 Day Peak 1,570.3 MW  
 Minimum Demand 1,273.5 MW

Notes: Above figures are excluding contribution from Roof Top Solar, 1MW solar, certain Wind plants and all Mini Hydro plants and Biomass plants

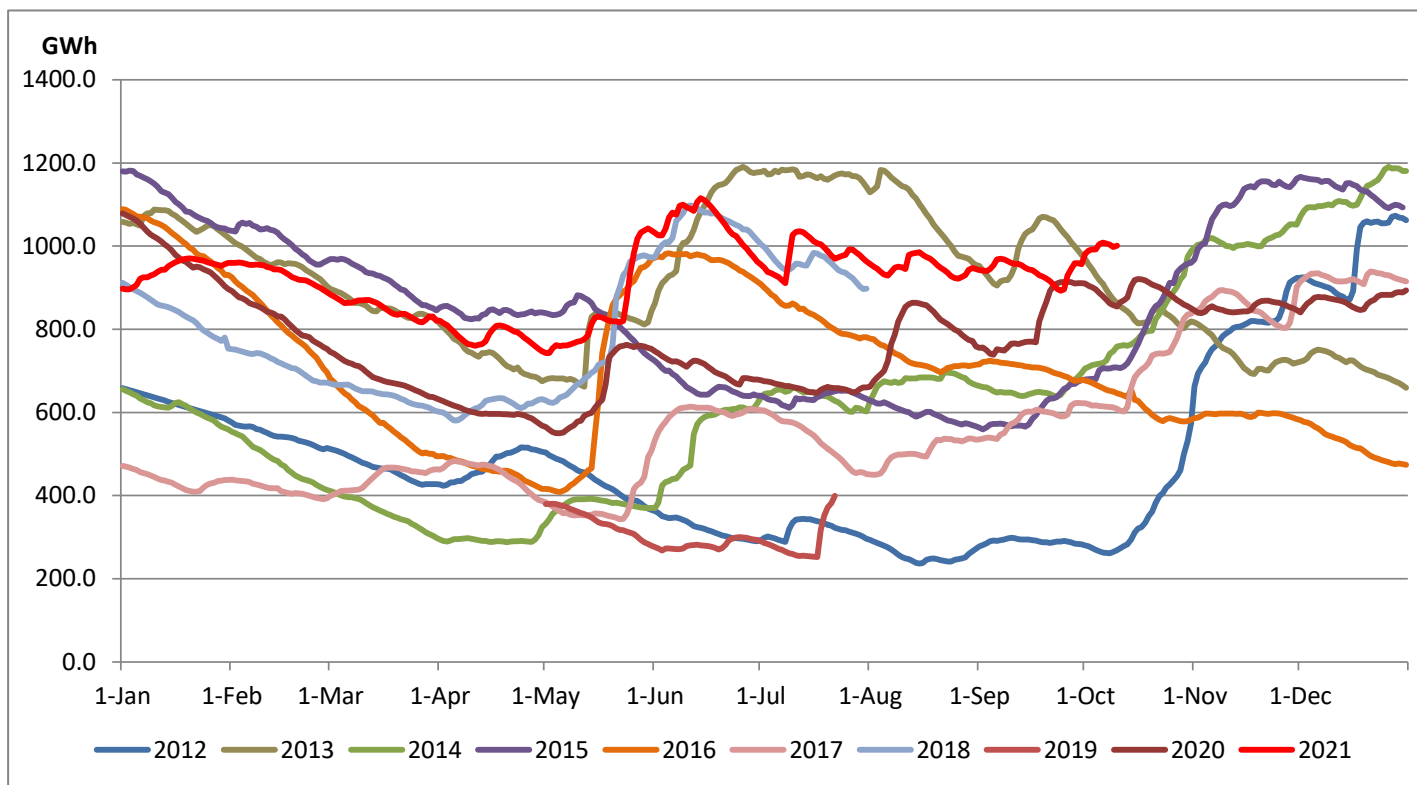
\* in addition to the night peak figure presented above, Kerawalapitiya waste heat plant, other MiniHydro and Biomass Plants of installed capacity 181.00 MW has recorded total 88.90 MW at night peak

## Reservoir Levels - as at 06.00 Hr on October 11, 2021



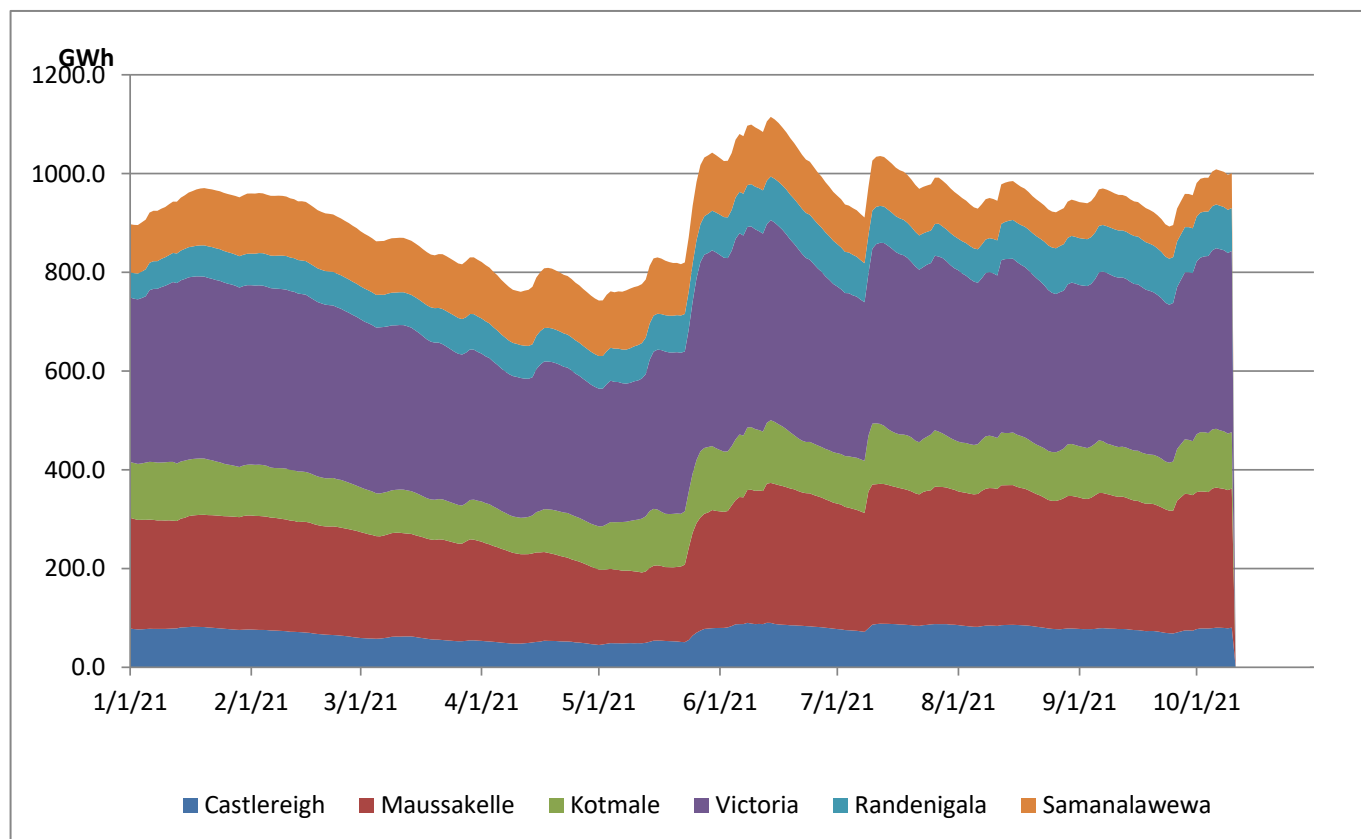
Total Reservoir Level(GWh) 1000.8  
 % of Total capacity 83.1%

## Comparison of Total Reservoir Storage Levels with Past Years



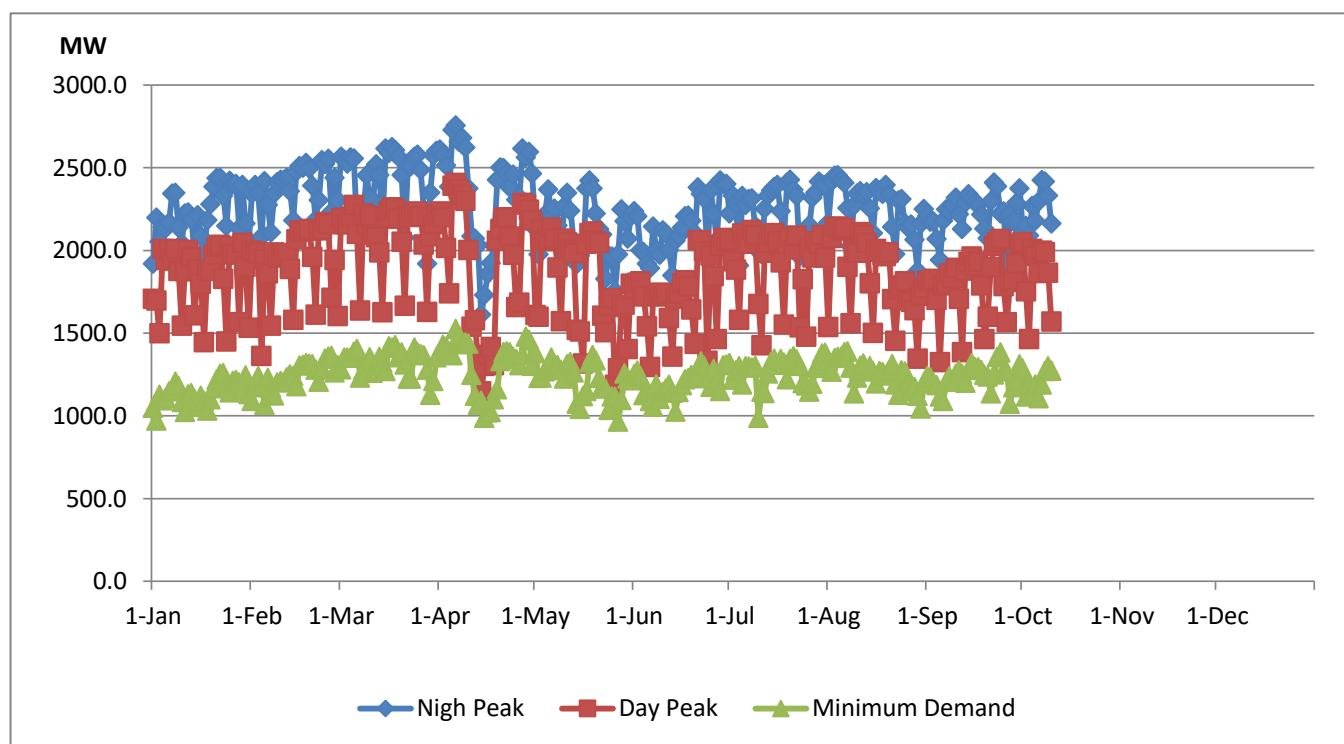
Data for 2018 and 2019 are only available for part of year.

## Variation of Major Hydro Reservoir Levels in the current year (GWh)





## Variation of Demand during the current year



### Notes:

The night peak is excluding the contribution from Mini hydro and biomass power plants

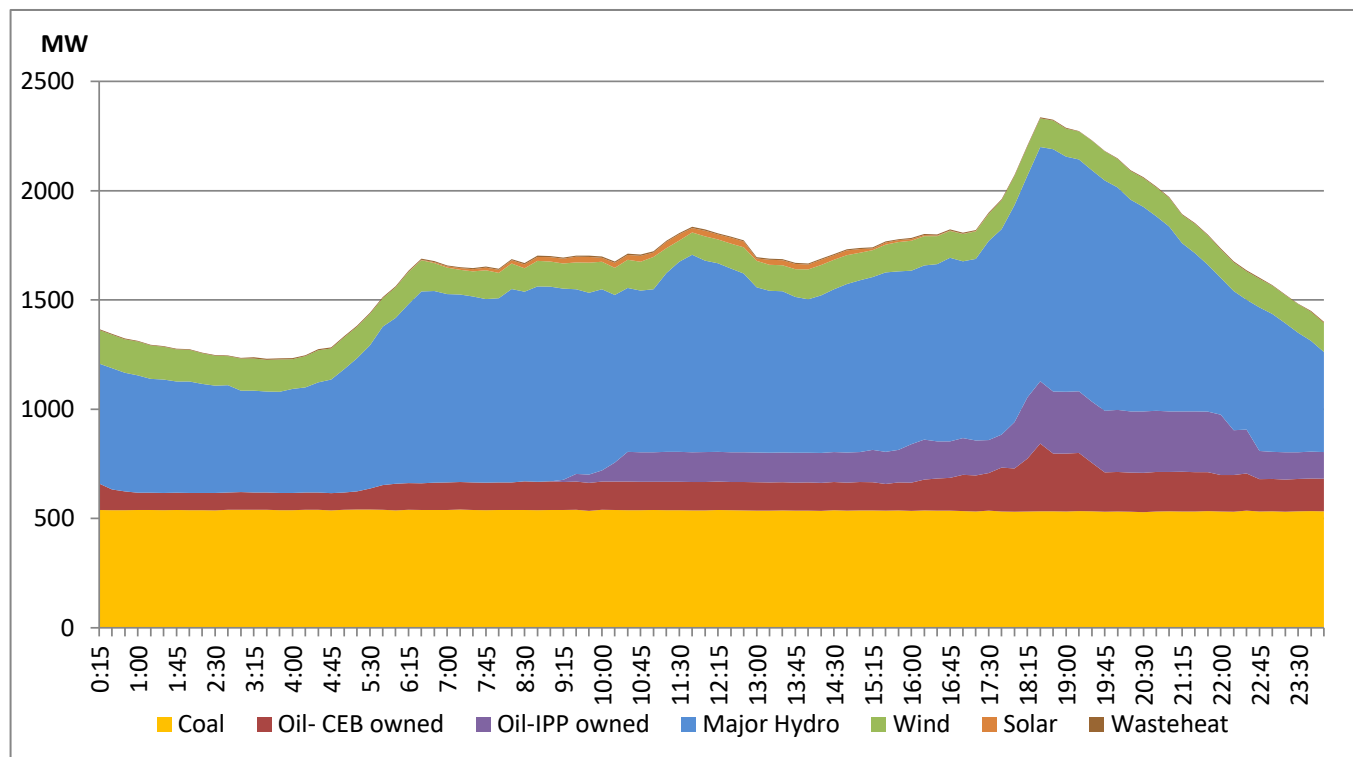
Day peak and minimum demand graphs includes the contribution from Moragahakanda power plant

All graphs include the contribution from telemetered solar and wind plants

## Daily Load Curve of the Previous day

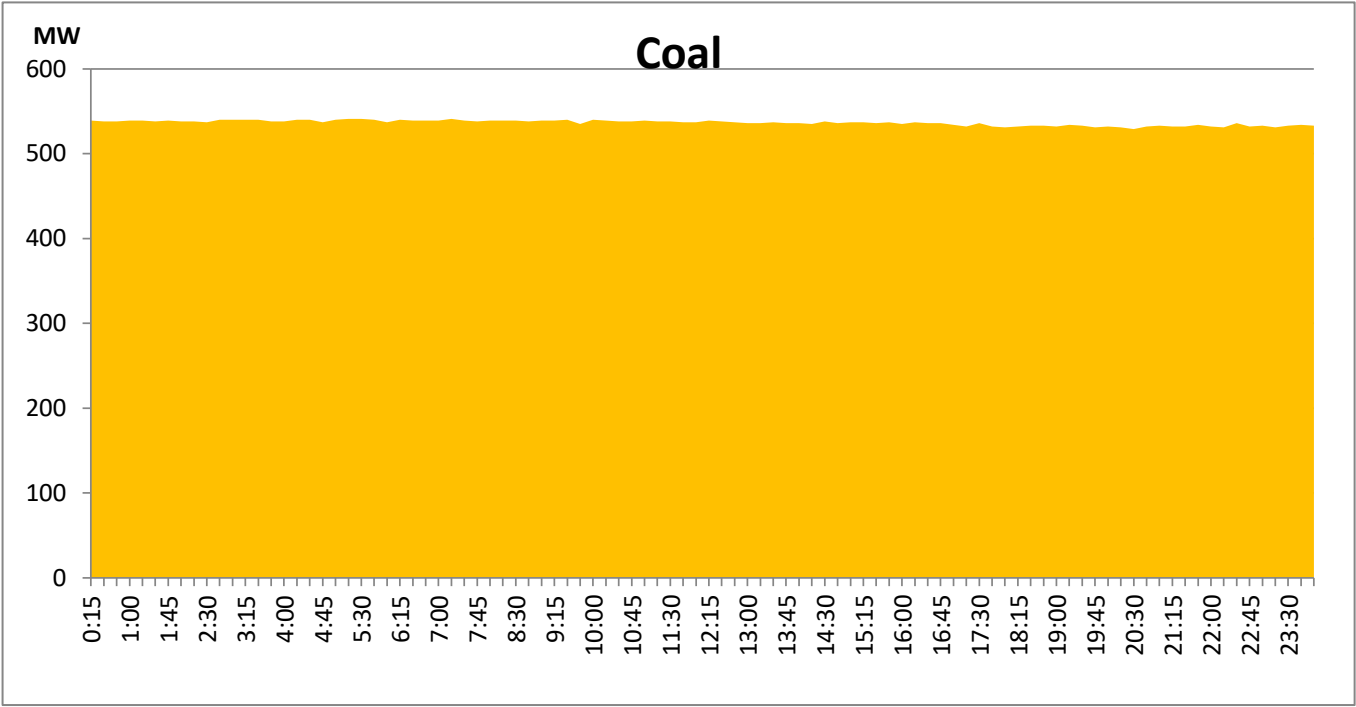
October 9, 2021

Solar and wind data is based on Telemetered Power Stations only



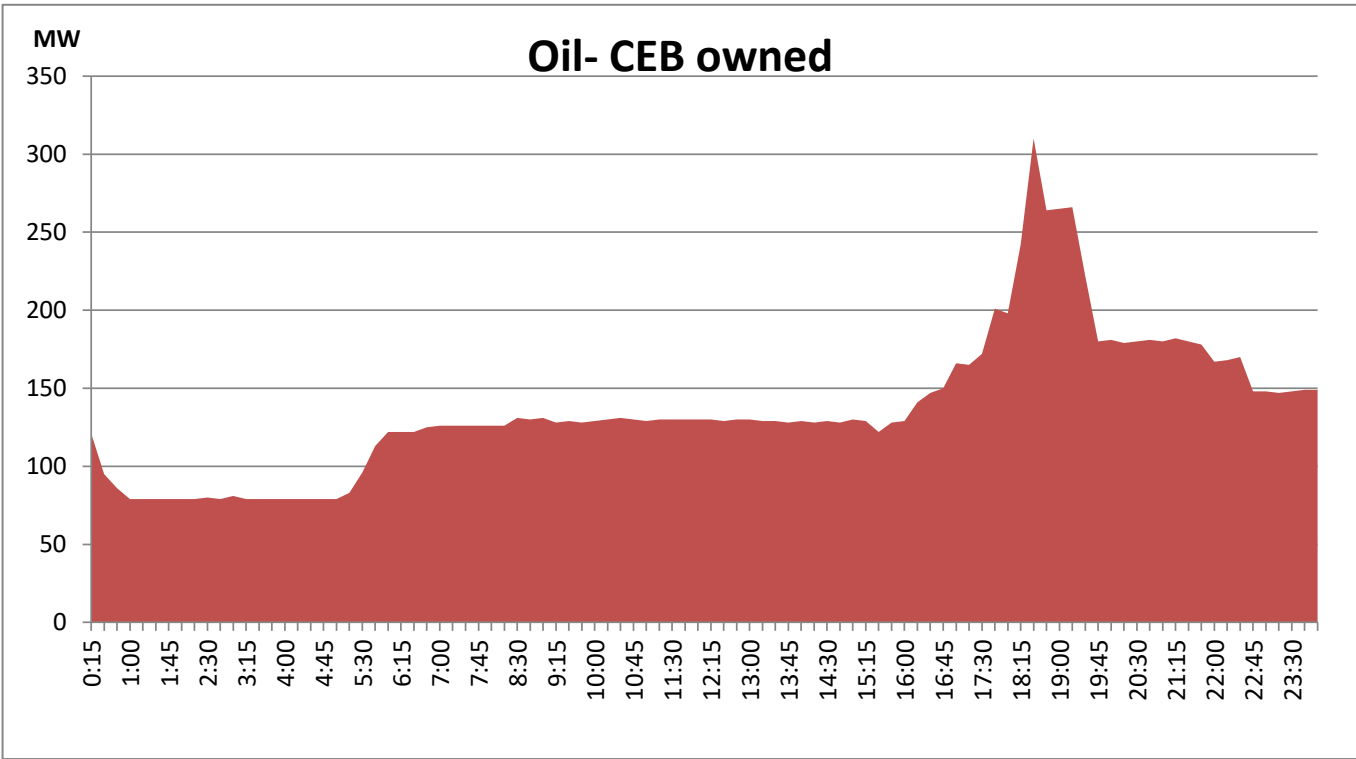
Coal Generation during the Previous day

October 9, 2021



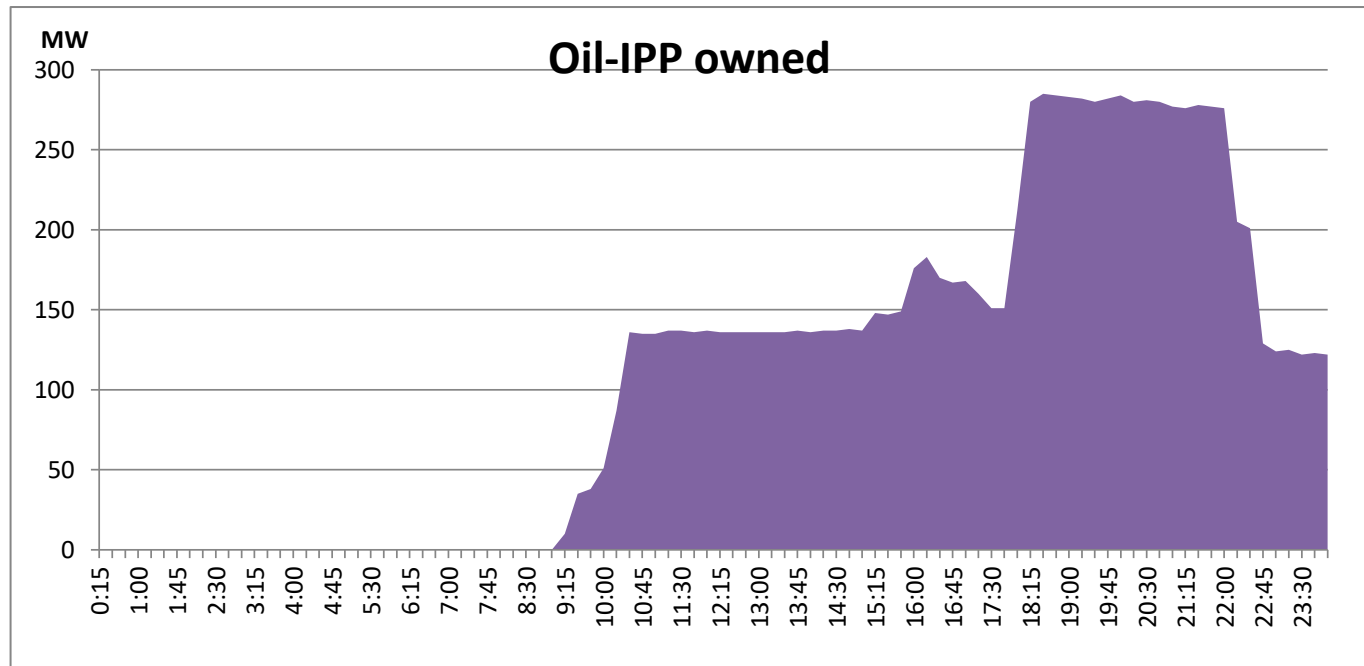
CEB Oil Plant Generation during the Previous day

October 9, 2021



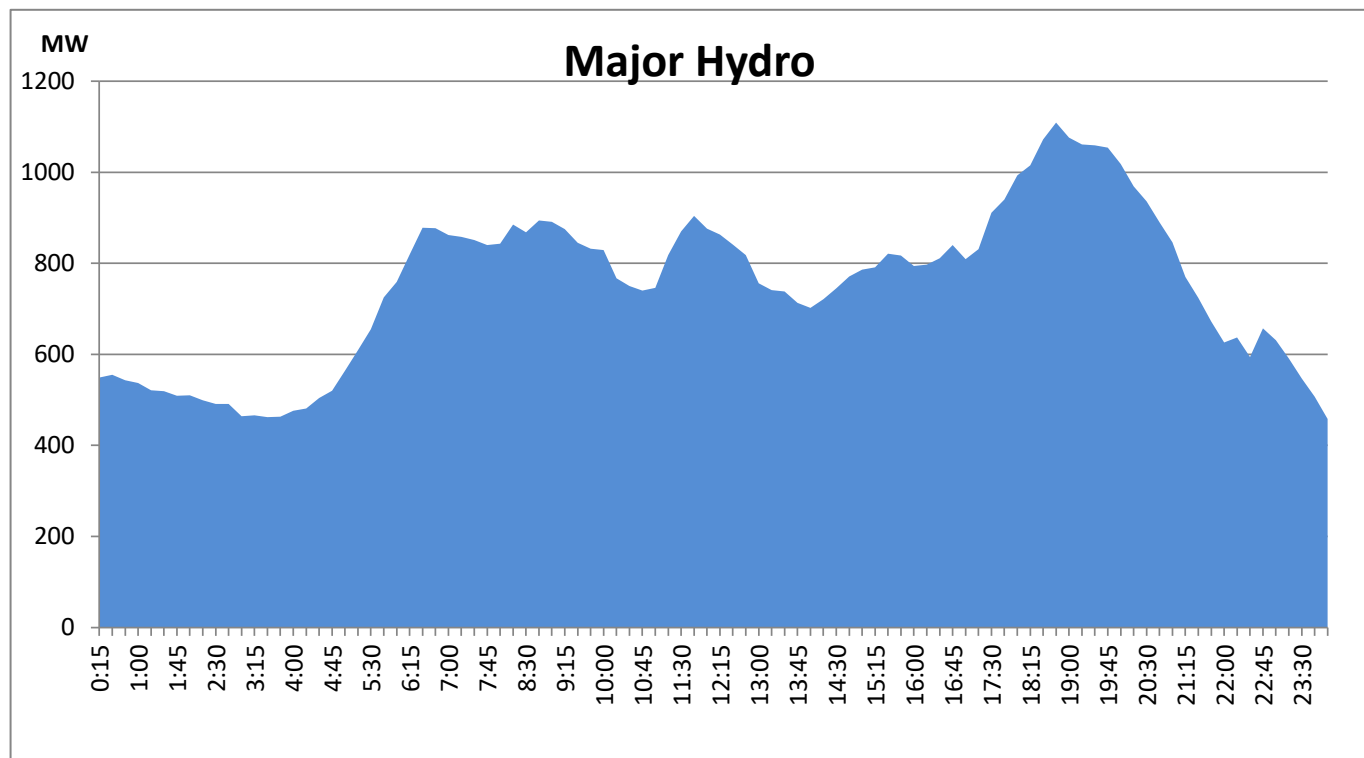
## IPP Oil Plant Generation during the Previous day

October 9, 2021



## Major Hydro Generation during the Previous day

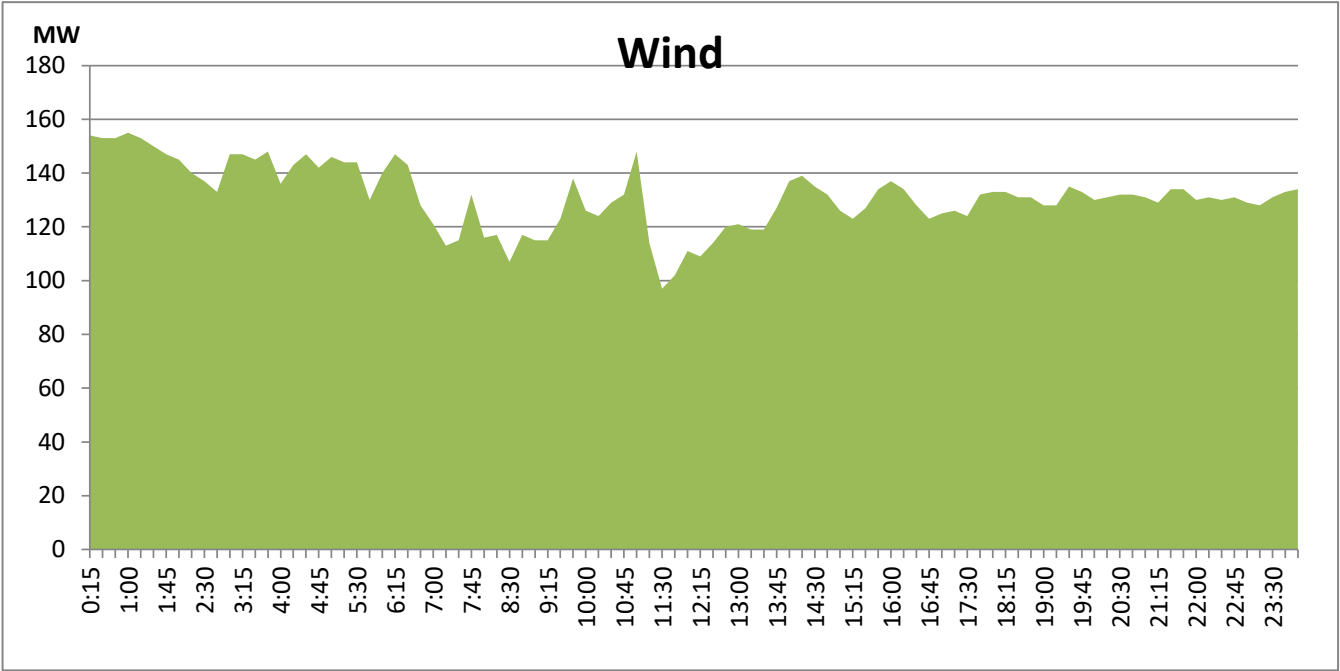
October 9, 2021



Wind Generation during the Previous day

October 9, 2021

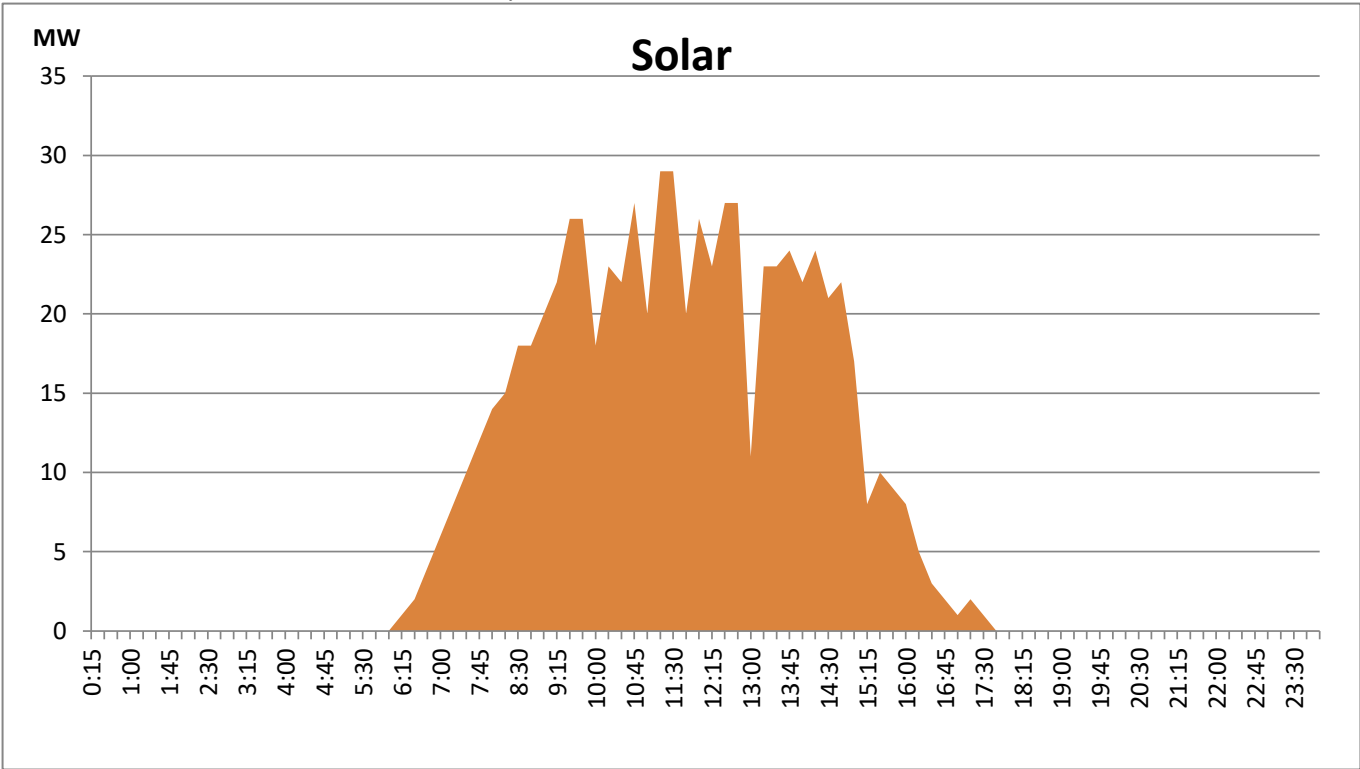
Based on Telemetered Power Stations only



Solar Generation during the Previous day

October 9, 2021

Based on Telemetered Power Stations only



**Thermal Plant Fuel types**

<b>Power Station</b>	<b>Primary Fuel</b>
<b>CEB Thermal</b>	
<b>Sapugaskanda 1</b>	Heavy Fuel
<b>Sapugaskanda 2</b>	Heavy Fuel
<b>Kelanitissa Small Gas Turbines</b>	Auto Diesel
<b>GT 7 - Kelanitissa</b>	Auto Diesel
<b>Kelanitissa CCY</b>	Naptha & Diesel
<b>Lakvijaya 1</b>	Coal
<b>Lakvijaya 2</b>	Coal
<b>Lakvijaya 3</b>	Coal
<b>Uthuru Janani</b>	Heavy Fuel
<b>Barge CEB</b>	Furnace Oil

<b>Power Station</b>	<b>Primary Fuel</b>
<b>Private Thermal</b>	
<b>Sojitz -</b>	Auto Diesel
<b>West Coast</b>	Low Sulphur Furnace oil

**Major Incidents during the day -as reported by CEB morning of****October 11, 2021**