

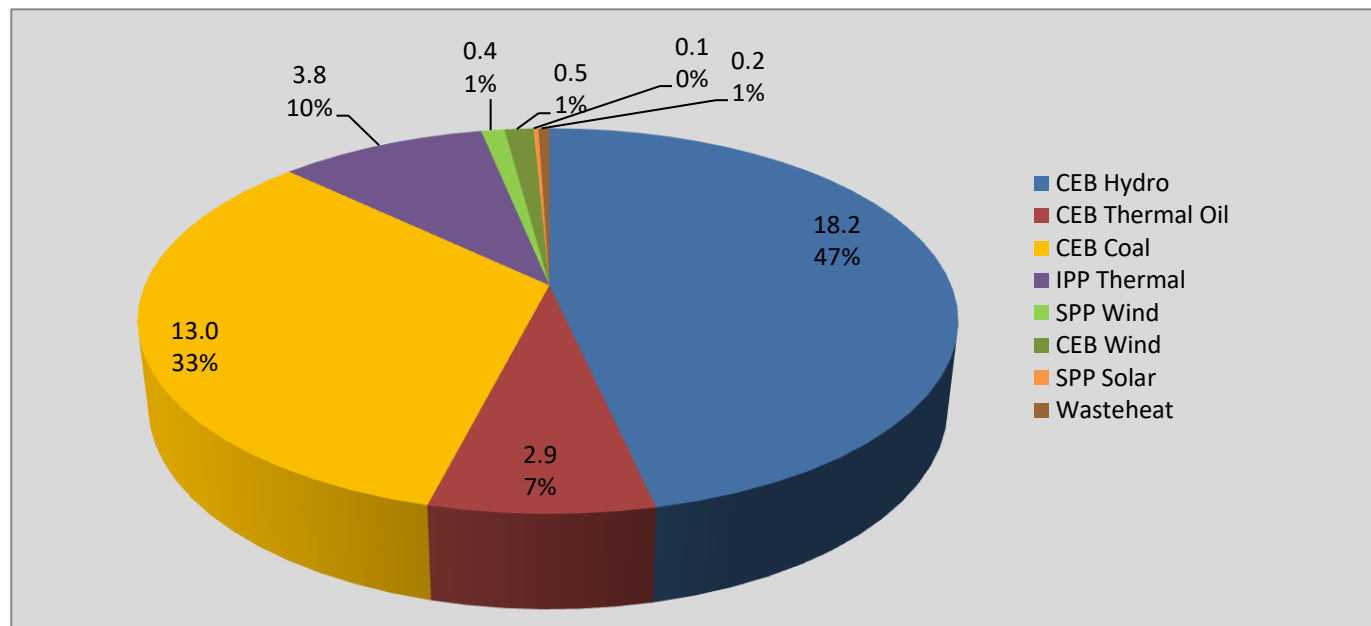
# **Generation and Reservoirs Statistics**

**October 5, 2021**



PUBLIC UTILITIES COMMISSION OF SRI LANKA

## Daily Generation Mix in MWh



**Total Generation 39,121 MWh**

Note: Above data is Excluding contribution from Roof Top Solar, 1MW solar, Mini Hydro plants and Biomass/ waste heat (except 10 MW Waste heat plant at Kerawalapitiya) plants

## Cumulative Dispatch

Note: Following data is Excluding contribution from Roof Top Solar, 1MW solar, Mini Hydro plants and Biomass/ waste heat (except 10 MW Waste heat plant at Kerawalapitiya) plants

### For Current Month

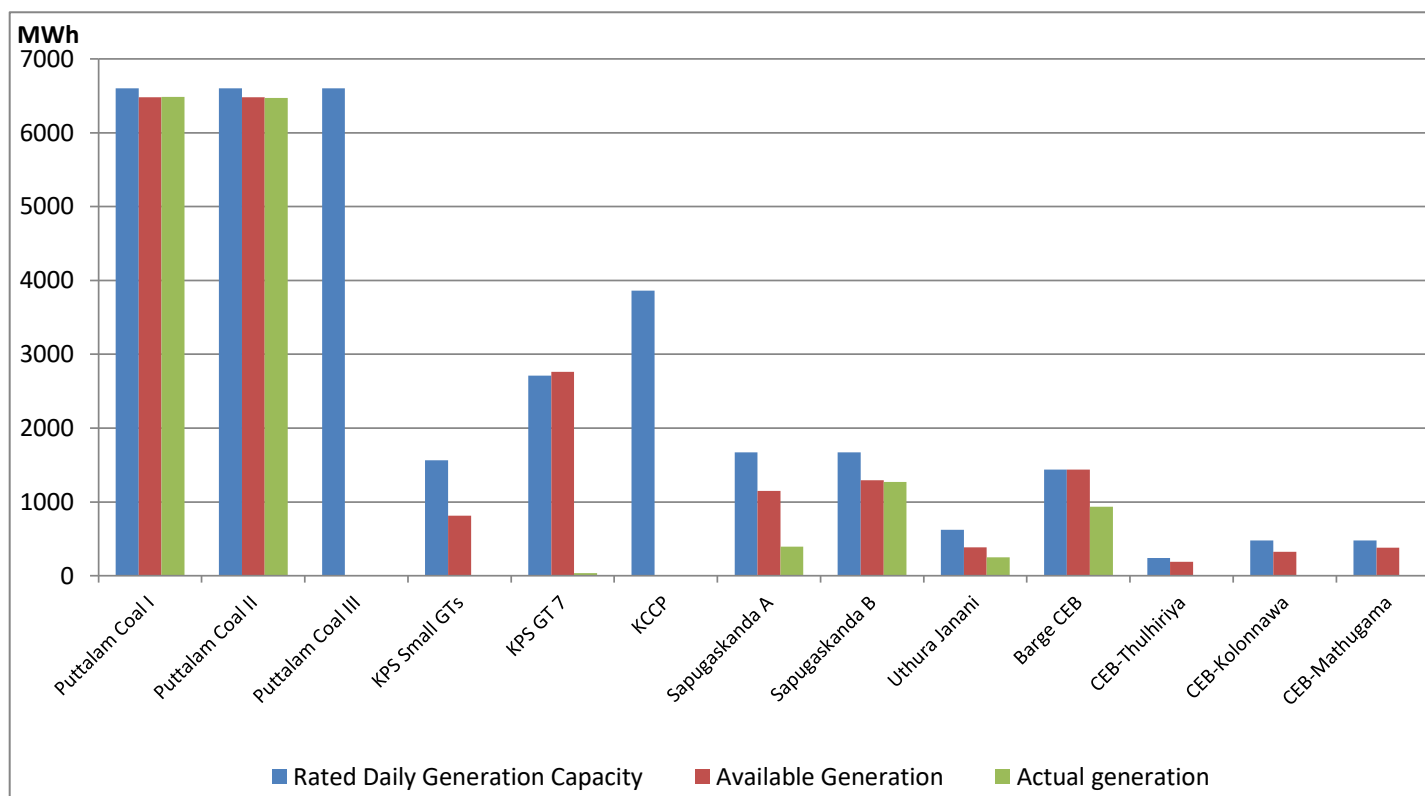
Category	Dispatch (GWh)	
CEB Hydro	90.0	47.73%
CEB Thermal Oil	13.4	7.10%
CEB Coal	62.9	33.32%
IPP Thermal	17.0	9.02%
SPP Wind	1.6	0.87%
CEB Wind	1.7	0.91%
SPP Solar	0.9	0.47%
SPP Waste Heat	1.1	0.57%
<b>Total</b>	<b>188.7</b>	

### For Current Year

Category	Dispatch (GWh)	
CEB Hydro	3,780.8	33.88%
CEB Thermal Oil	988.9	8.86%
CEB Coal	4,569.3	40.94%
IPP Thermal	1,245.1	11.16%
SPP Wind	183.6	1.64%
CEB Wind	253.0	2.27%
SPP Solar	74.5	0.67%
SPP Waste Heat	28.2	0.25%
<b>Total</b>	<b>11,159.7</b>	

## CEB owned Thermal Plant Dispatch

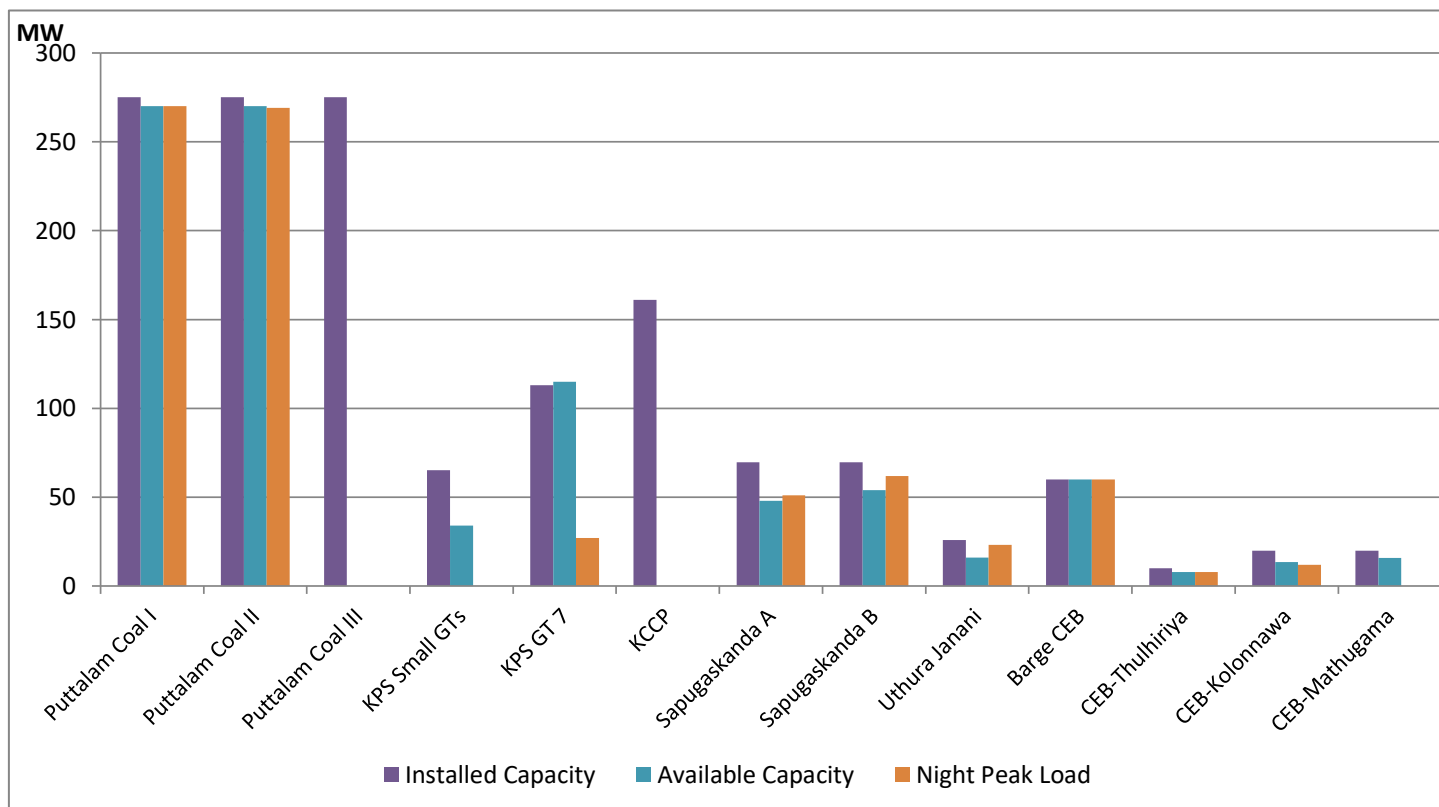
October 5, 2021



Available Generation is estimated based on plant availability at 6.00am on

October 6, 2021

## CEB owned Thermal Plant Loading at the Night Peak



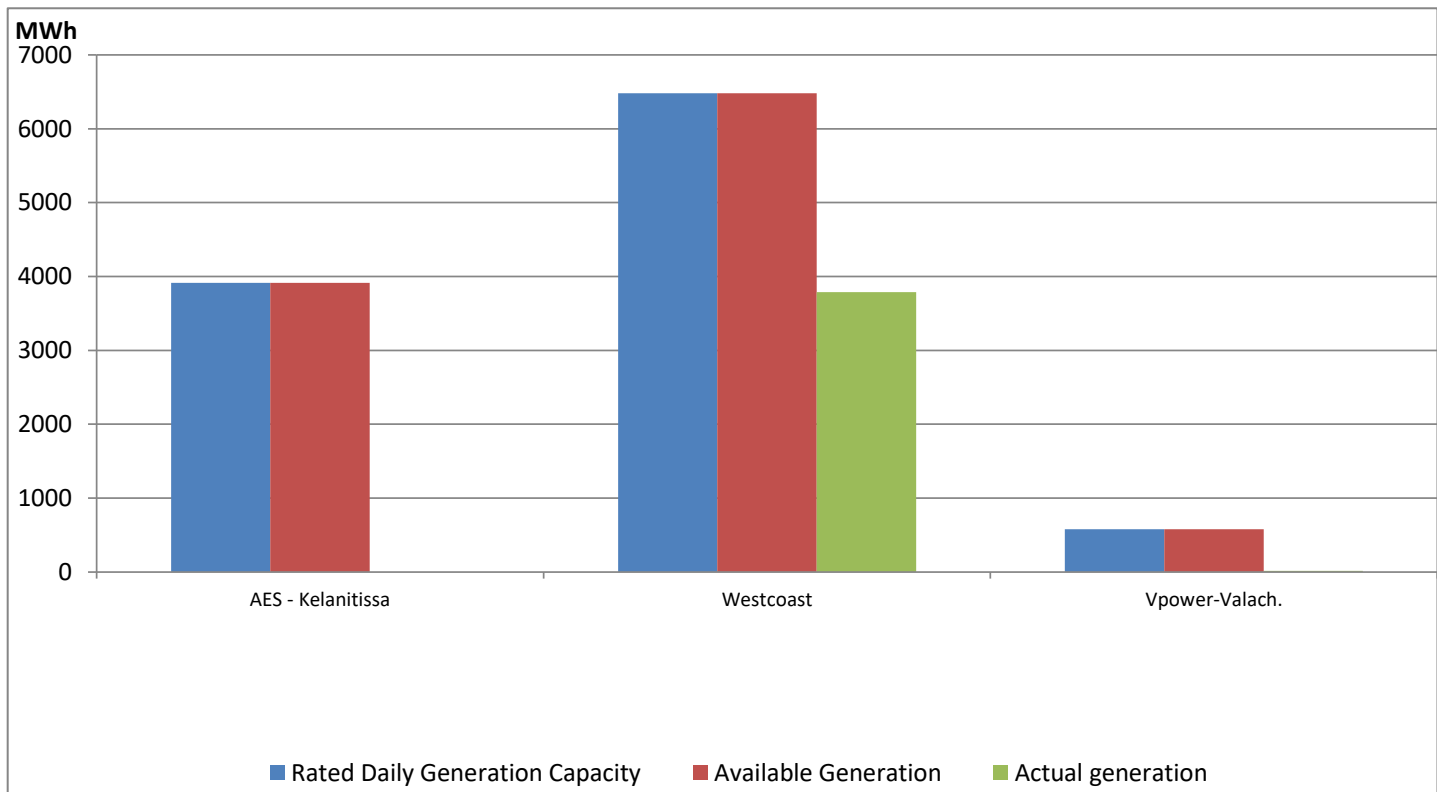
Note- Plant availability is recorded at 6.00 am on

October 6, 2021

## IPP owned Thermal Plant Dispatch

October 5, 2021

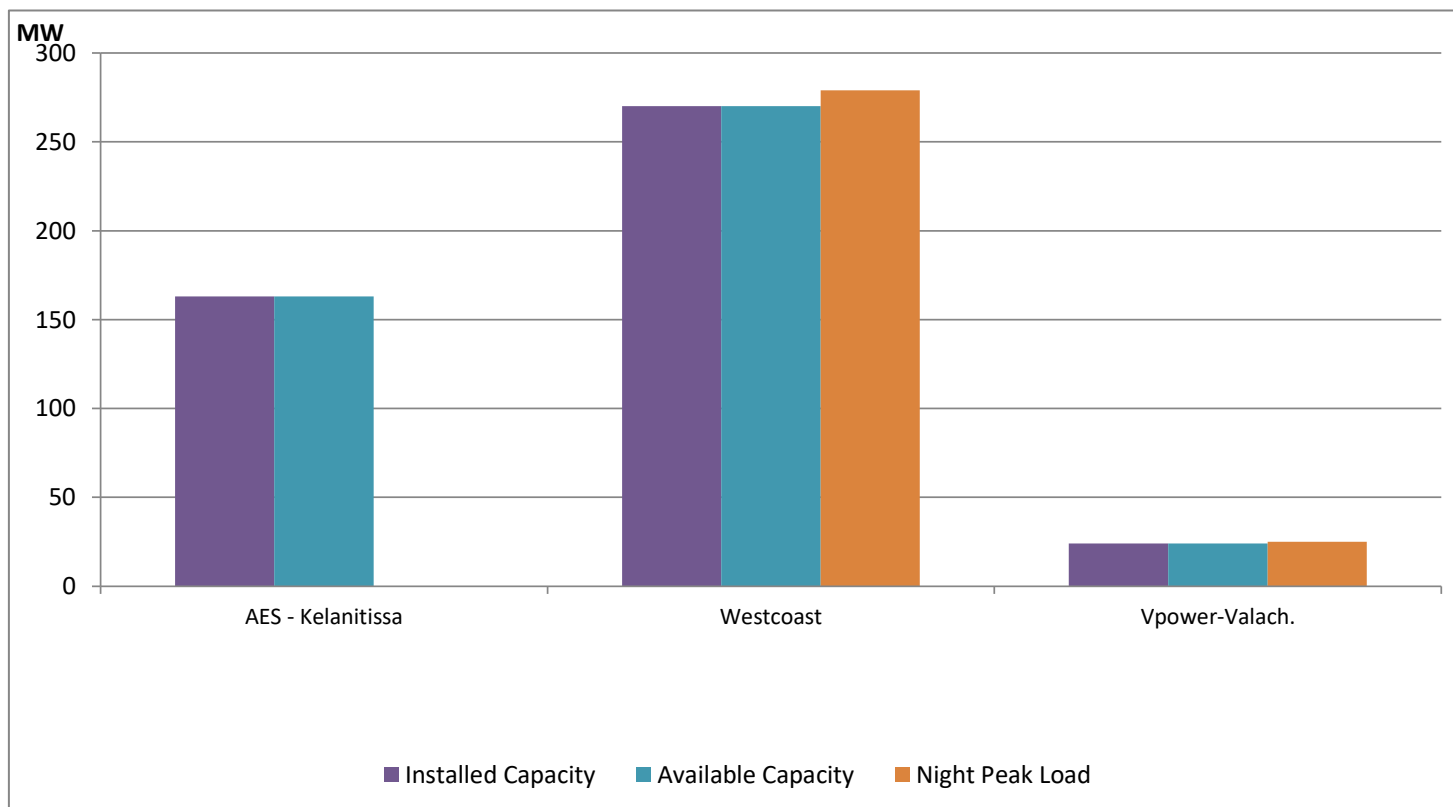
ACE Embilipitiya, ACE Matara, Asia Power, V Power Pallekale, Vpower Galle, V Power Horana, Vpower Hambantota and Altaqa Mahiyanganaya are not available due to expiration of PPAs



Available Generation is estimated based on plant availability at 6.00am on

October 6, 2021

## IPP owned Thermal Plant Loading at the Night Peak

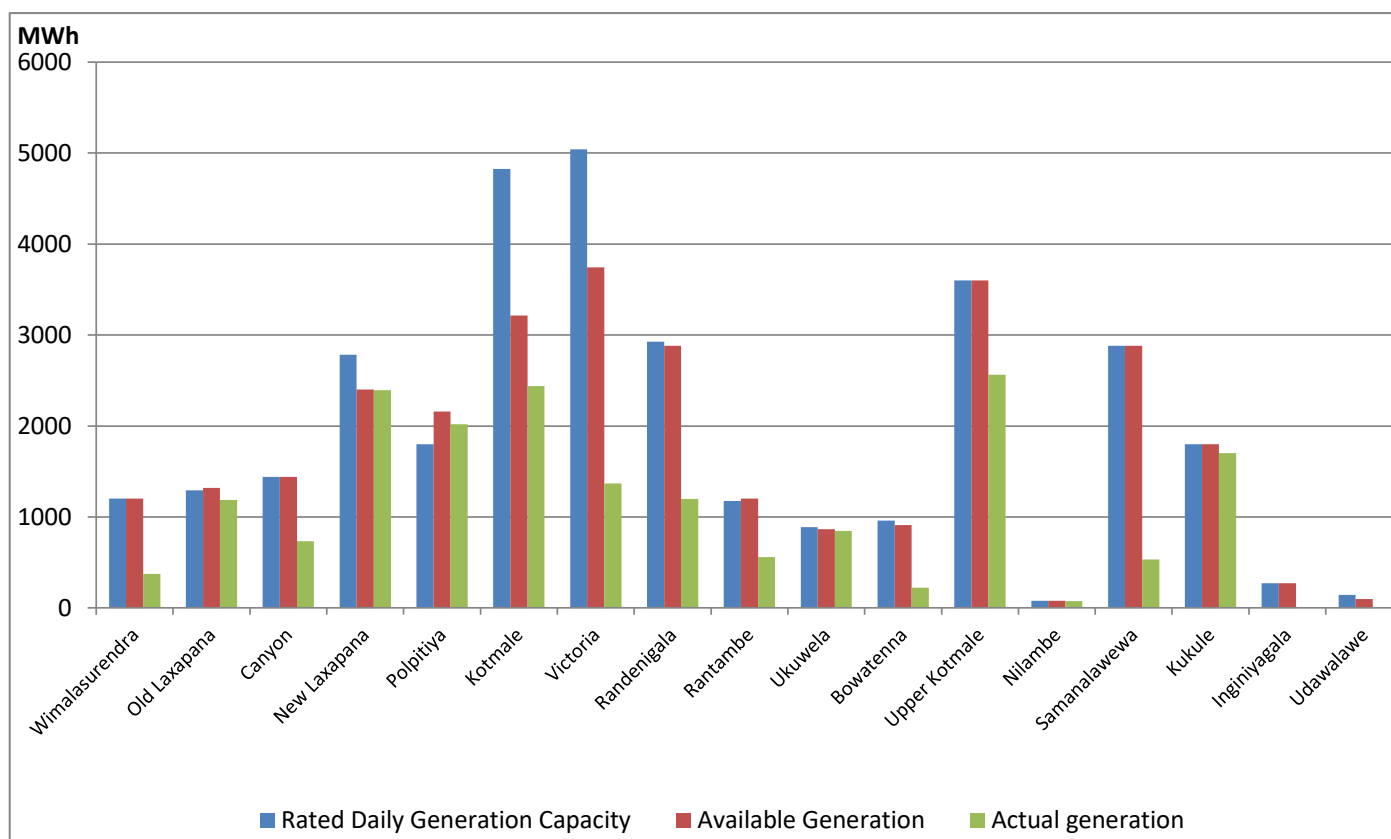


Note- Plant availability is recorded at 6.00 am on

October 6, 2021

## Major Hydro Plant Dispatch

October 5, 2021

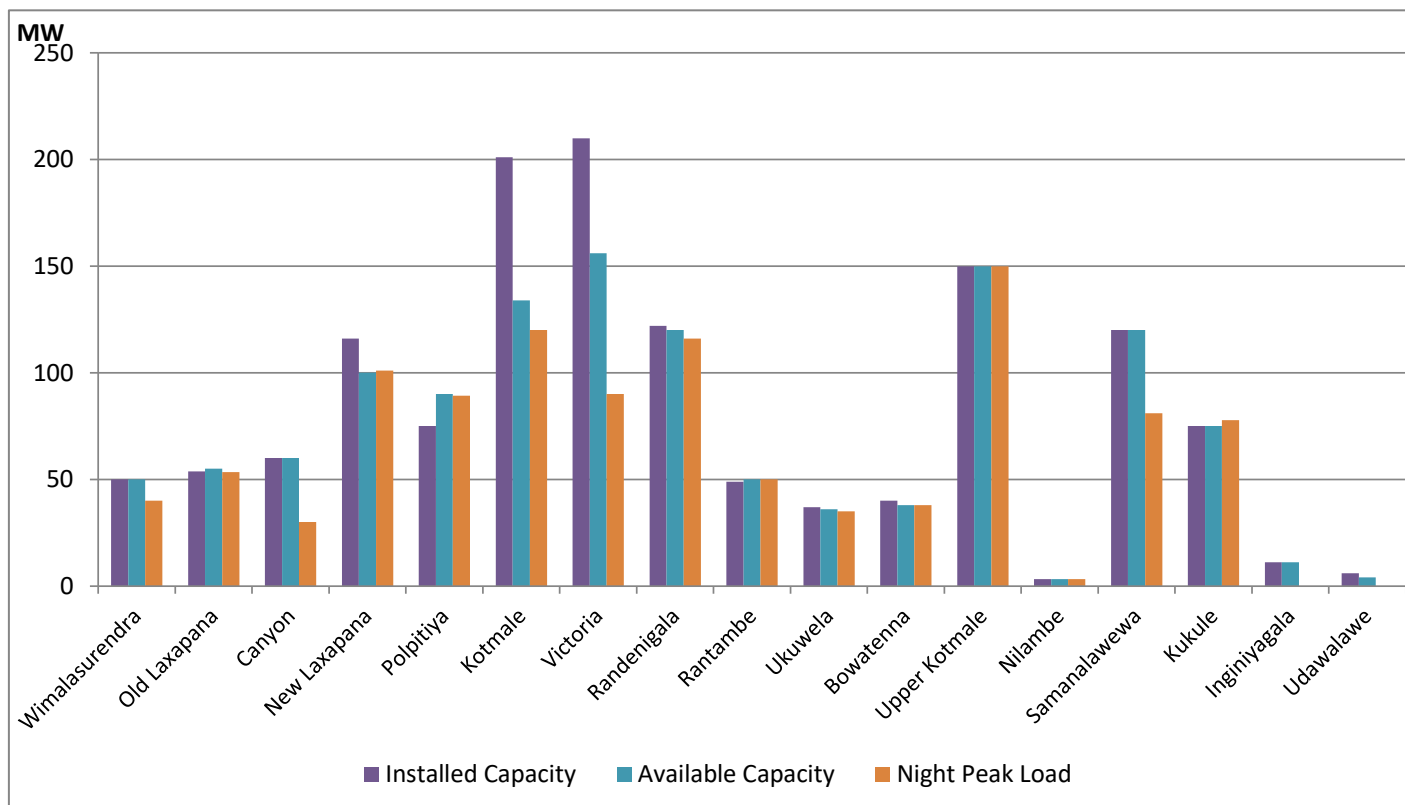


Note- Available Generation is estimated based on plant availability at 6.00am on

October 6, 2021

## Major Hydro Plant Loading at Night Peak

October 5, 2021



Note- Plant availability is recorded at 6.00 am on

October 6, 2021

Summary of Major Plant performance

Plant	Installed Capacity	Plant Availability	Night peak Load	Plant Dispatch
	(MW)	(MW)	(MW)	(GWh)
Wimalasurendra	50.00	50.00	40.00	375.00
Old Laxapana	53.80	55.00	53.40	1,186.00
Canyon	60.00	60.00	30.00	731.00
New Laxapana	116.00	100.00	101.00	2,392.00
Polpitiya	75.00	90.00	89.30	2,018.00
Kotmale	201.00	134.00	120.00	2,440.00
Victoria	210.00	156.00	90.00	1,370.00
Randenigala	122.00	120.00	116.00	1,198.00
Rantambe	49.00	50.00	50.00	557.00
Ukuwela	37.00	36.00	35.00	846.00
Bowatenna	40.00	38.00	38.00	223.00
Upper Kotmale	150.00	150.00	150.00	2,565.00
Nilambe	3.20	3.20	3.20	76.00
Samanalawewa	120.00	120.00	81.00	534.00
Kukule	75.00	75.00	77.80	1,700.00
Inginiyagala	11.25	11.25	-	-
Udawalawe	6.00	4.00	-	-
Puttalam Coal I	275.00	270.00	270.00	6,484.00
Puttalam Coal II	275.00	270.00	269.00	6,470.00
Puttalam Coal III	275.00	-	-	-
KPS Small GTs	65.20	34.00	-	-
KPS GT 7	113.00	115.00	27.00	37.00
KCCP	161.00	-	-	10.00
Sapugaskanda A	69.60	48.00	51.00	393.00
Sapugaskanda B	69.60	54.00	62.00	1,272.00
Uthura Janani	26.01	16.00	23.20	252.00
Barge CEB	60.00	60.00	60.00	934.00
CEB-Thulhiriya	10.00	8.00	8.00	3.00
CEB-Kolonnawa	20.00	13.60	12.00	5.00
CEB-Mathugama	20.00	15.80	-	-
AES - Kelanitissa	163.00	163.00	-	-
Westcoast	270.00	270.00	279.00	3,787.00
Vpower-Valach.	24.00	24.00	25.00	16.00
Solar	68.00		-	91.00
Wind	248.00		17.20	957.00
MH and BM	441.00		115.00	Not available
Total without NCRE	3,538.46	2,613.85		

Night peak load of MH and BM only include loading of Minihydro plants of total capacity MW 170

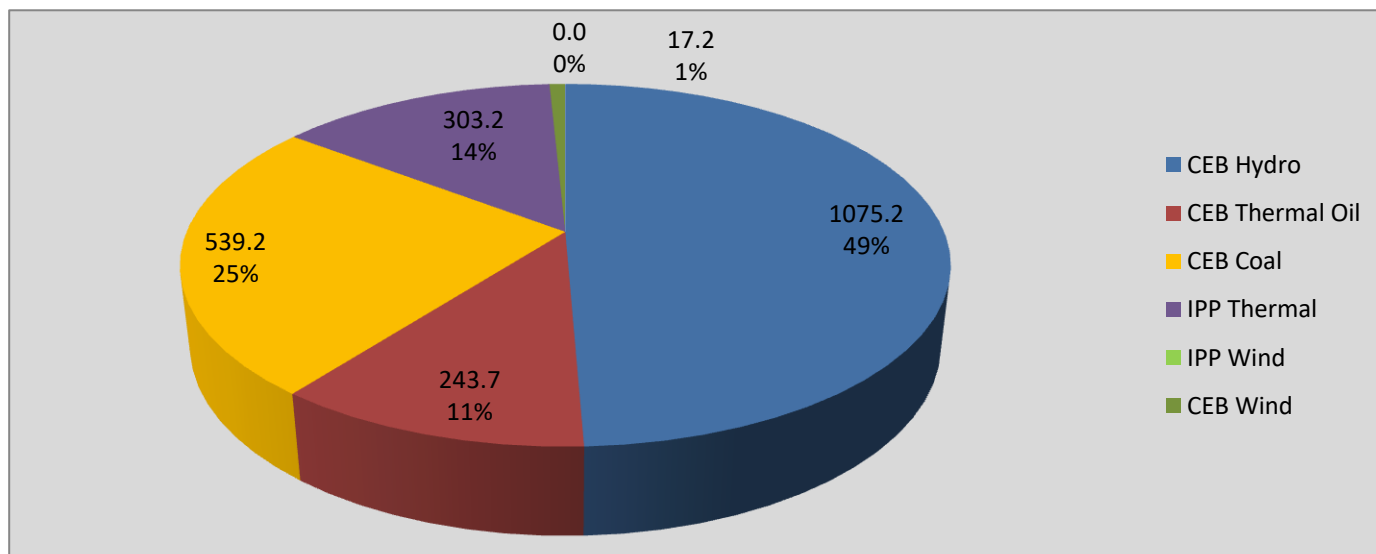
Installed capacity of Solar, wind, Mini-hydro and Biomass plants are as of end of December 2019

Plant availability is the availability recorded at 6 am on

October 6, 2021

## Contribution to the Night Peak in MW

October 5, 2021

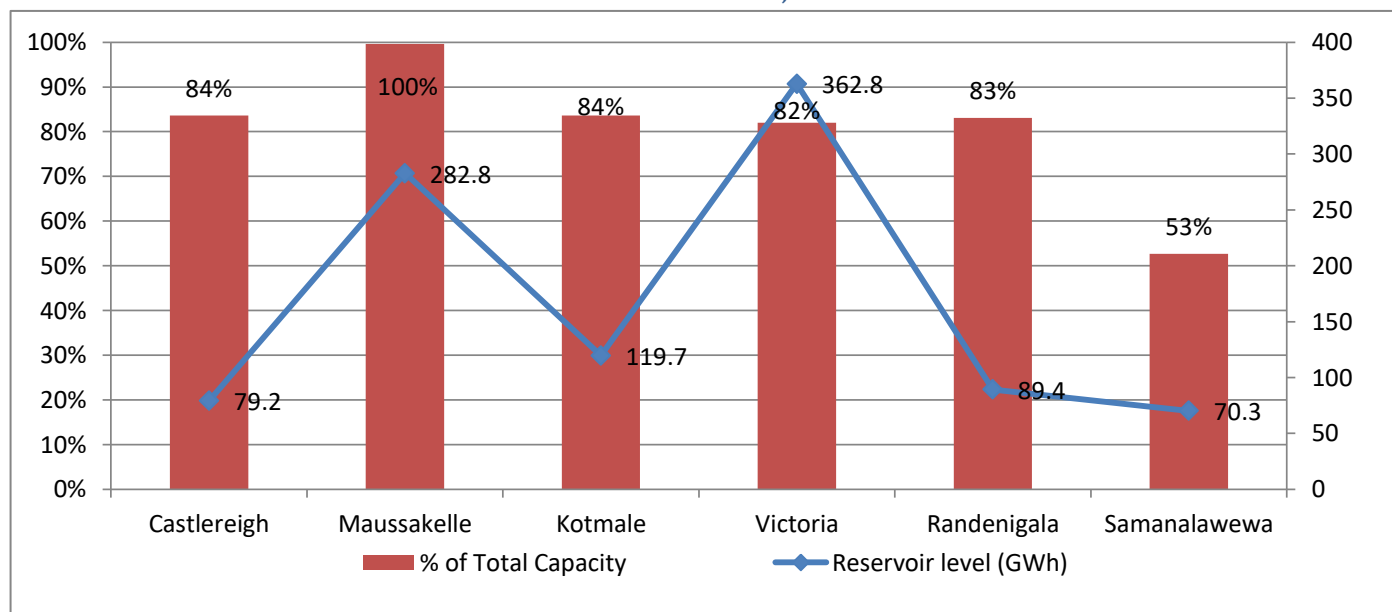


Night Peak\* 2,178.4 MW  
 Day Peak 1,966.9 MW  
 Minimum Demand 1,189.5 MW

Notes: Above figures are excluding contribution from Roof Top Solar, 1MW solar, certain Wind plants and all Mini Hydro plants and Biomass plants

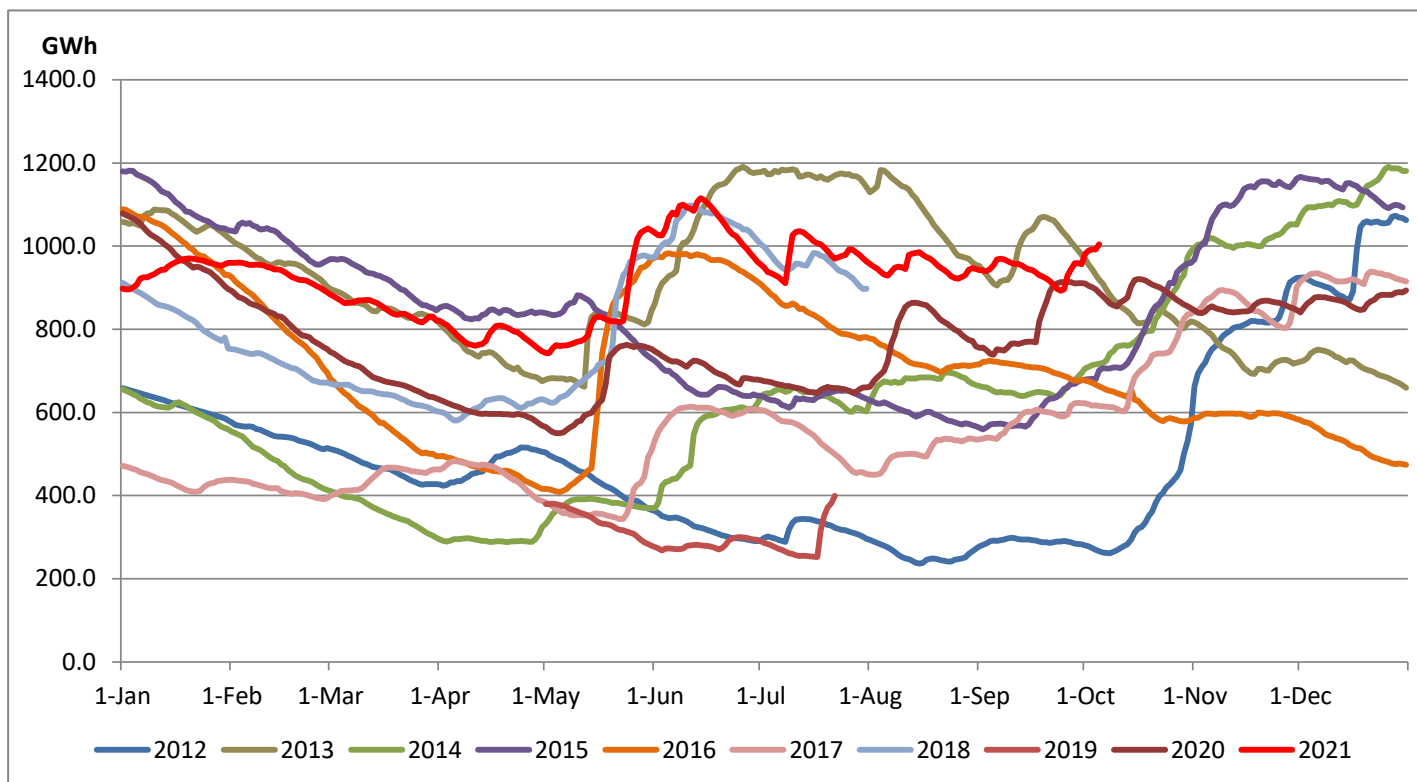
\* in addition to the night peak figure presented above, Kerawalapitiya waste heat plant, other MiniHydro and Biomass Plants of installed capacity 170.00 MW has recorded total 123.90 MW at night peak

## Reservoir Levels - as at 06.00 Hr on October 6, 2021



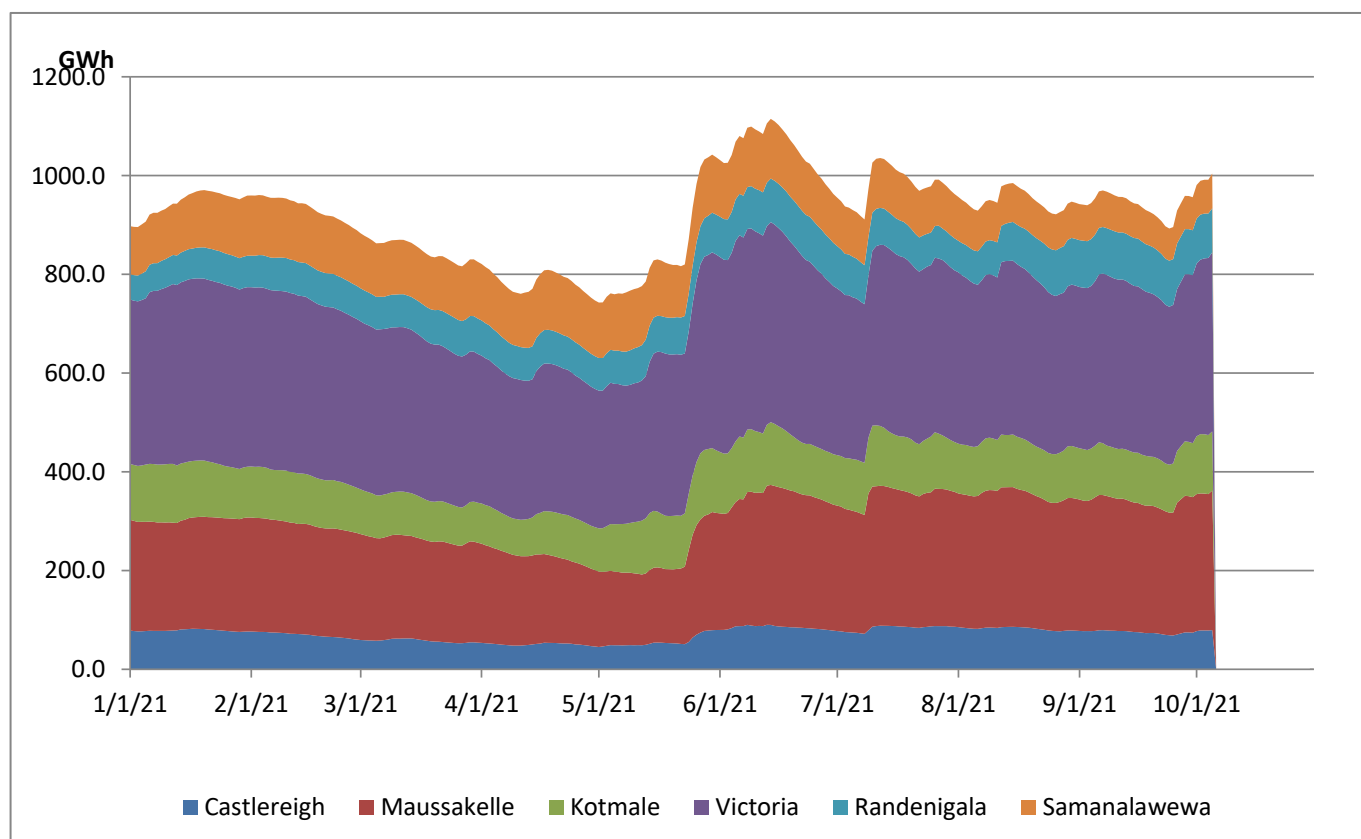
Total Reservoir Level(GWh) 1004.2  
 % of Total capacity 83.3%

## Comparison of Total Reservoir Storage Levels with Past Years



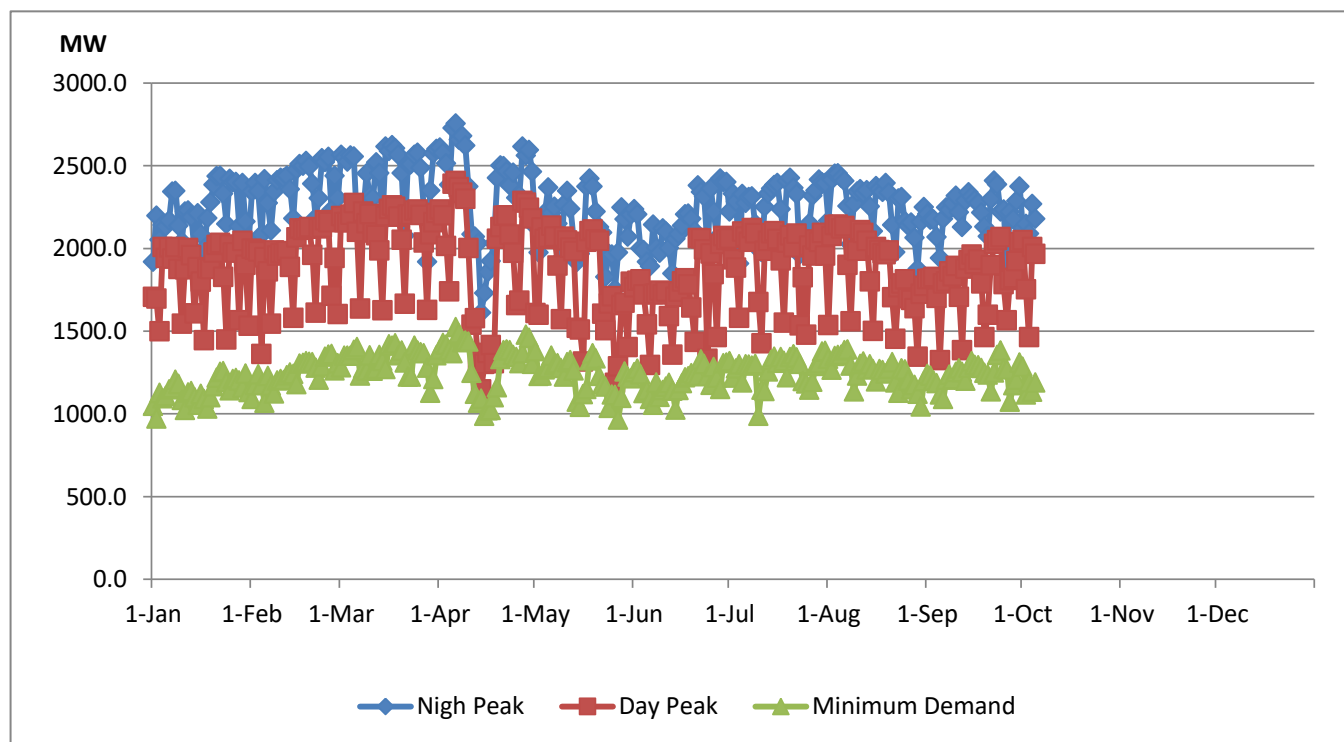
Data for 2018 and 2019 are only available for part of year.

## Variation of Major Hydro Reservoir Levels in the current year (GWh)





## Variation of Demand during the current year



### Notes:

The night peak is excluding the contribution from Minihydro and biomass power plants

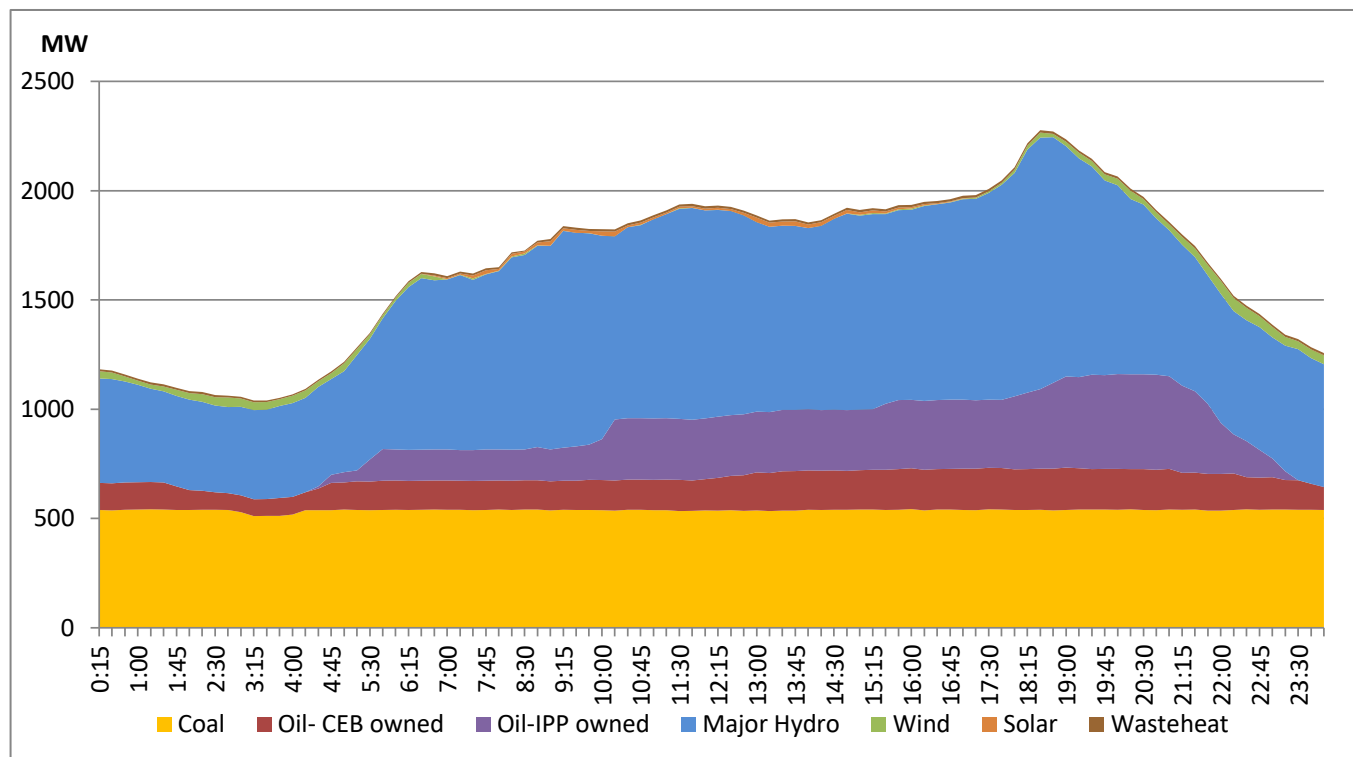
Day peak and minimum demand graphs includes the contribution from Moragahakanda power plant

All graphs include the contribution from telemetered solar and wind plants

## Daily Load Curve of the Previous day

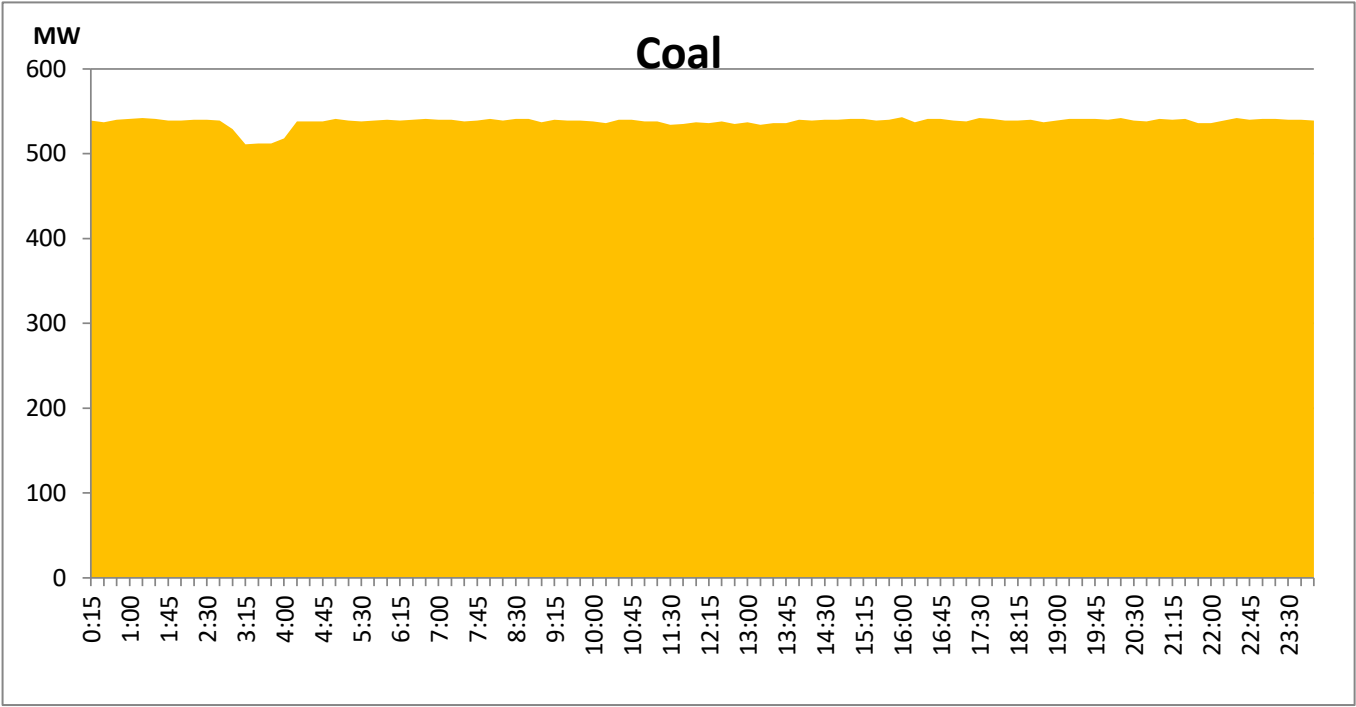
October 4, 2021

Solar and wind data is based on Telemetered Power Stations only



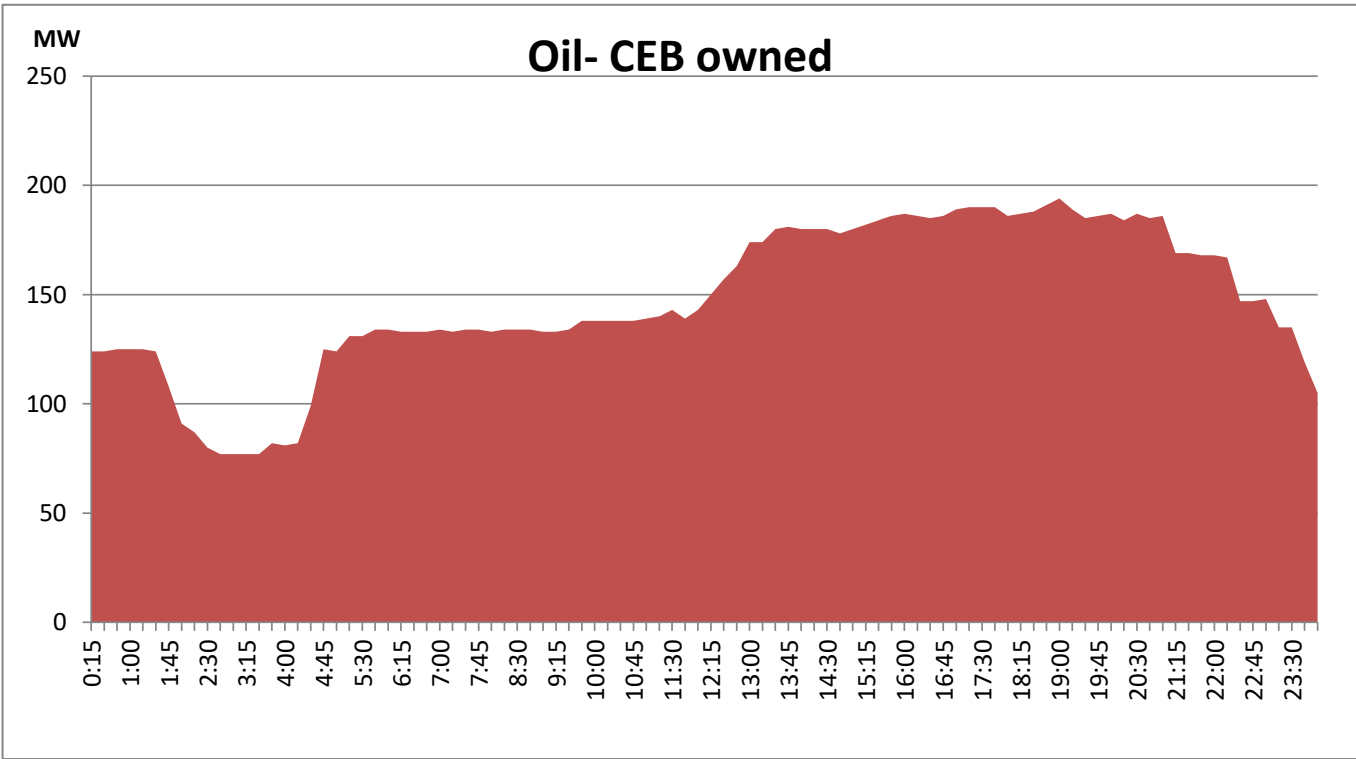
Coal Generation during the Previous day

October 4, 2021



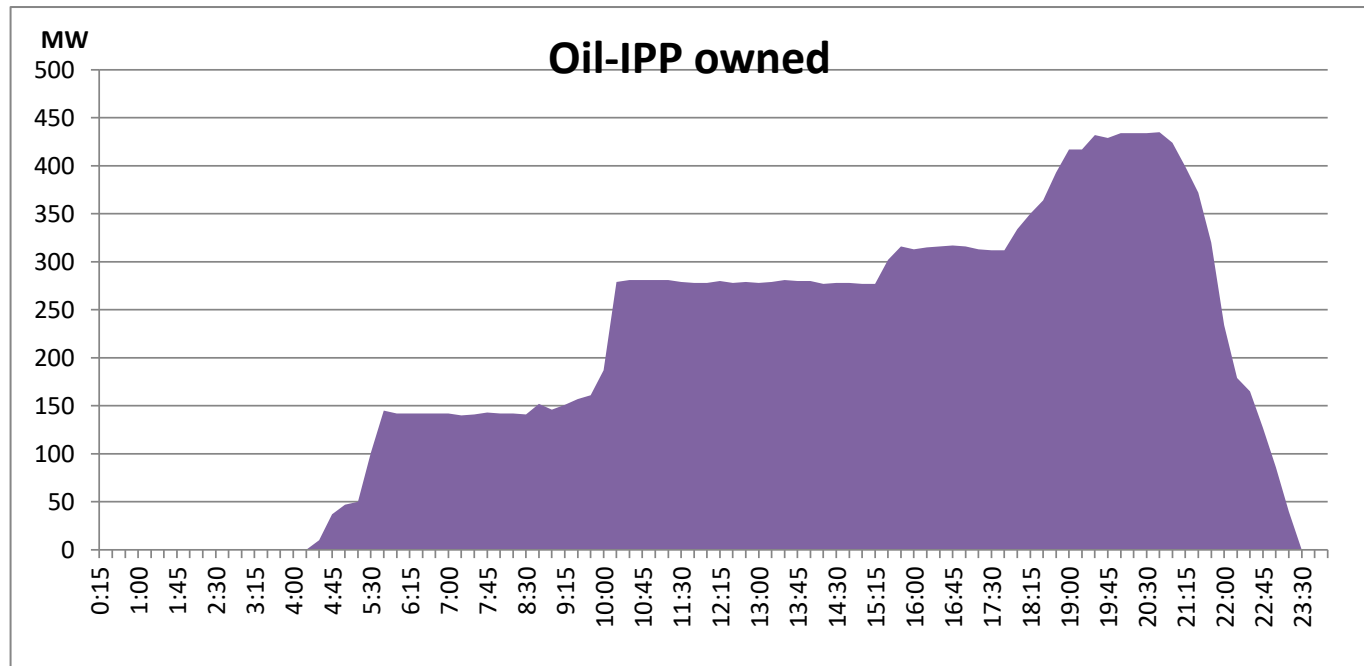
CEB Oil Plant Generation during the Previous day

October 4, 2021



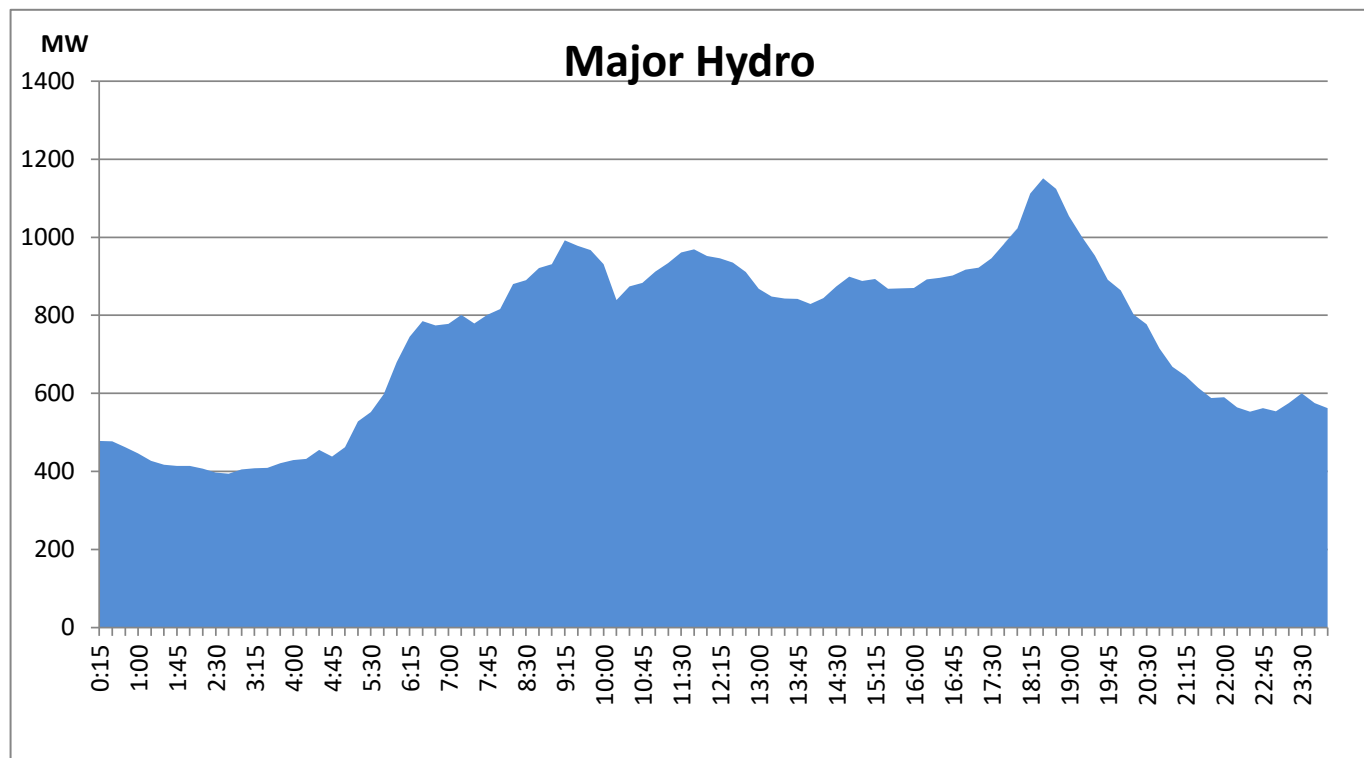
## IPP Oil Plant Generation during the Previous day

October 4, 2021



## Major Hydro Generation during the Previous day

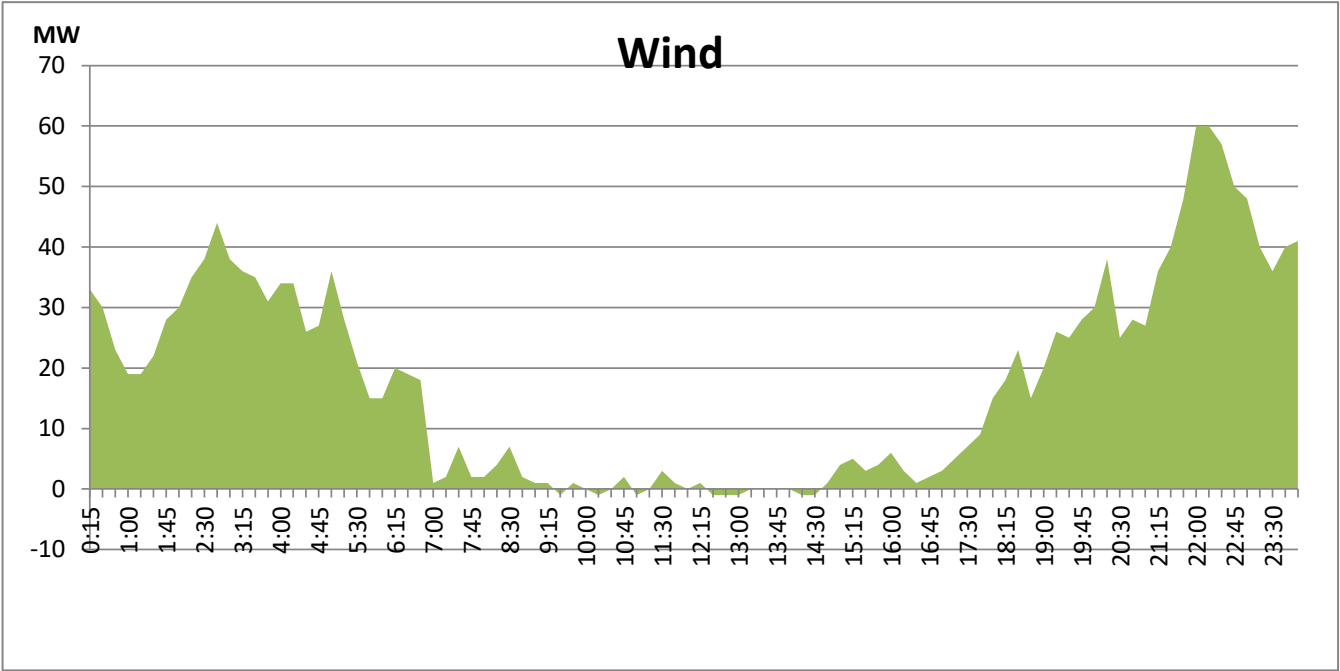
October 4, 2021



Wind Generation during the Previous day

October 4, 2021

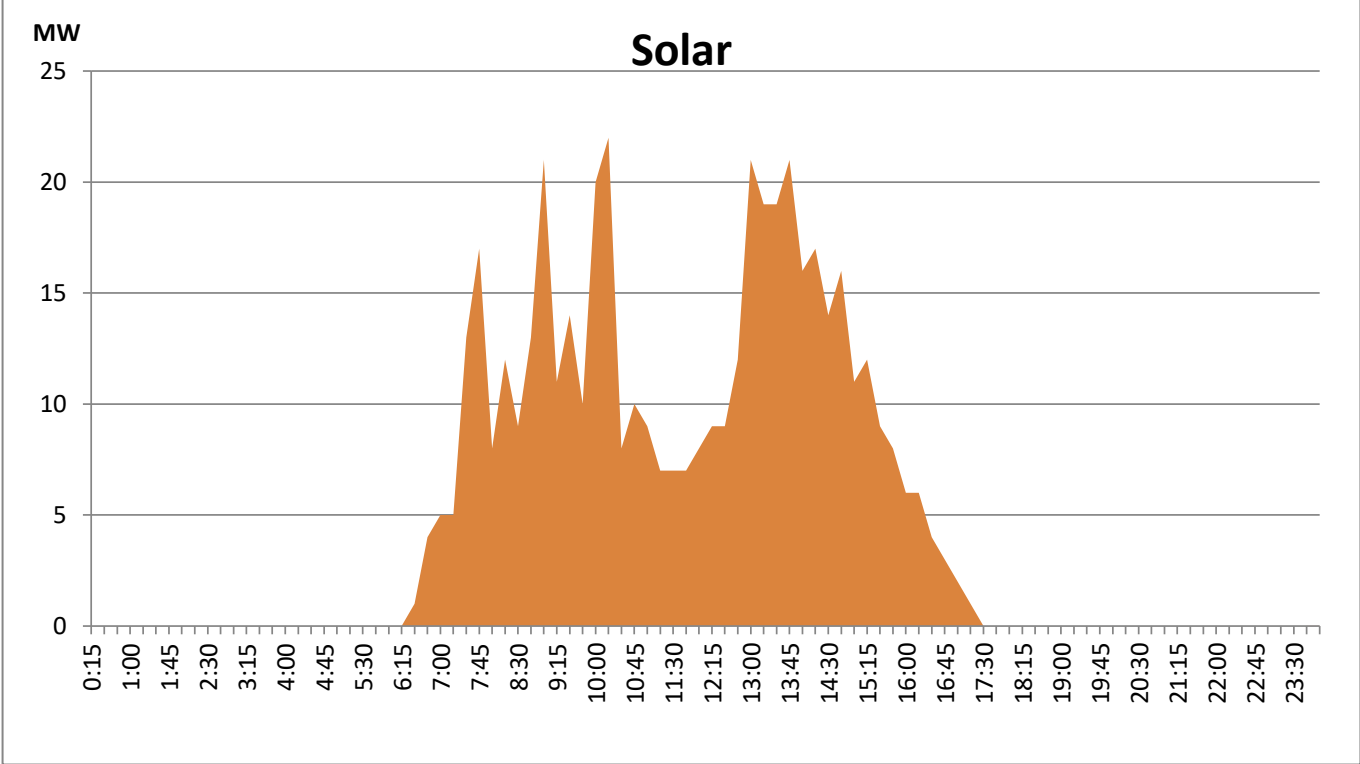
Based on Telemetered Power Stations only



Solar Generation during the Previous day

October 4, 2021

Based on Telemetered Power Stations only



## Thermal Plant Fuel types

Power Station	Primary Fuel
CEB Thermal	
Sapugaskanda 1	Heavy Fuel
Sapugaskanda 2	Heavy Fuel
Kelanitissa Small Gas Turbines	Auto Diesel
GT 7 - Kelanitissa	Auto Diesel
Kelanitissa CCY	Naptha & Diesel
Lakvijaya 1	Coal
Lakvijaya 2	Coal
Lakvijaya 3	Coal
Uthuru Janani	Heavy Fuel
Barge CEB	Furnace Oil

Power Station	Primary Fuel
Private Thermal	
Sojitz -	Auto Diesel
West Coast	Low Sulphur Furnace oil

### Major Incidents during the day -as reported by CEB morning of

**October 6, 2021**

- 1) Pannipitiya-Biyagama both ccts tripped from Panni end and tripped and A/R from Biya end at 11:22hrs due to the operation of distance protection causing Panni, Ratmala, Dehiwala, Panadura, Horana, Matugama, Ambalan and New Galle GSSs to be dead. Consequently N'Lax -Balan cct 01 tripped from N'Lax end on backup O/C protection ( N'Lax -Balan cct 02 had released for maintenance) causing Balan, Deniyaya, Embilipitiya, Hamban, Ratnapura, Wewalwatta, Beliatta and Matara GSSs to be dead. Kukule both m/cs and S'wewa Gen 02 also tripped rejecting 75 MW and 30 MW respectively. N'Lax -Balan cct 01 restored at 11:37hrs. Panni -Biya both ccts restored by 11:57hrs. All affected GSSs were restored by 12:12hrs. S'wewa Gen 02 and both Kukule m/cs resumed generation by 12:00 hrs and 13:32hrs respectively.
- 2) Kolon -Athuru cct 02 tripped and A/R from both ends at 11:22 hrs due to the operation of distance protection.
- 3) Kothmale Biyagama cct 02 tripped and A/R from both ends at 12:21hrs due to the operation of distance protection.
- 4) Kukule spilling continues to the present hour.
- 5) Canyon Pond spilling started at 00:04hrs on 06.10.2021 and stopped at 5:35hrs.
- 6) Laxapana Pond spilling started at 03:26hrs on 06.10.2021 and stopped at 5:50 hrs.