

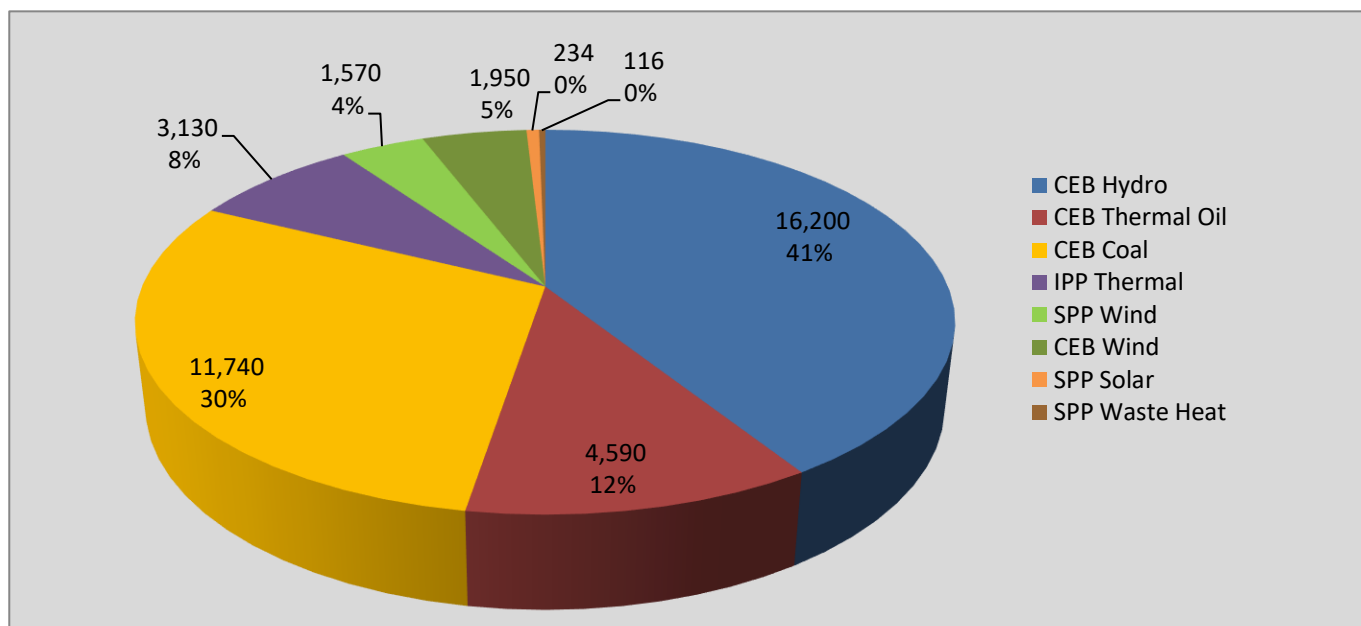
# **Generation and Reservoirs Statistics**

**September 1, 2021**



**PUBLIC UTILITIES COMMISSION OF SRI LANKA**

## Daily Generation Mix in MWh



**Total Generation** **39,540 MWh**

Note: Minihydro and Biomass and waste heat (except 10 MW WH plant at Kerawalapitiya) power plant energy is not included

## Cumulative Dispatch

Note: Minihydro and Biomass and waste heat (except 10 MW WH plant at Kerawalapitiya) power plant energy is not included

### For Current Month

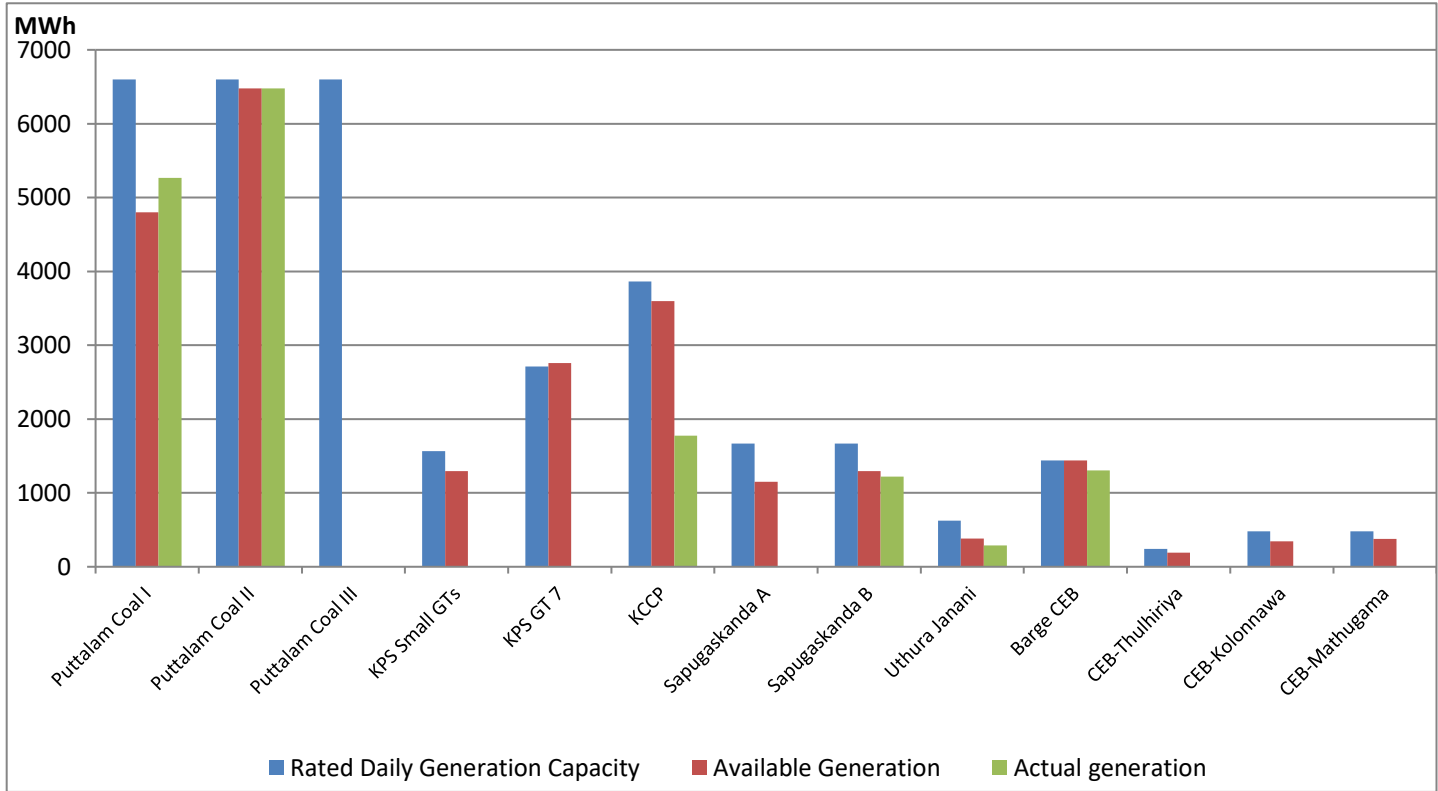
Category	Dispatch (GWh)	Percentage
CEB Hydro	16.2	40.97%
CEB Thermal Oil	4.6	11.61%
CEB Coal	11.7	29.69%
IPP Thermal	3.1	7.92%
SPP Wind	1.6	3.97%
CEB Wind	2.0	4.93%
SPP Solar	0.2	0.59%
SPP Waste Heat	0.1	0.29%
<b>Total</b>	<b>39.5</b>	

### For Current Year

Category	Dispatch (GWh)	Percentage
CEB Hydro	3,242.1	33.08%
CEB Thermal Oil	902.0	9.20%
CEB Coal	4,038.2	41.21%
IPP Thermal	1,185.5	12.10%
SPP Wind	139.9	1.43%
CEB Wind	204.8	2.09%
SPP Solar	65.5	0.67%
SPP Waste Heat	21.6	0.22%
<b>Total</b>	<b>9,799.6</b>	

## CEB owned Thermal Plant Dispatch

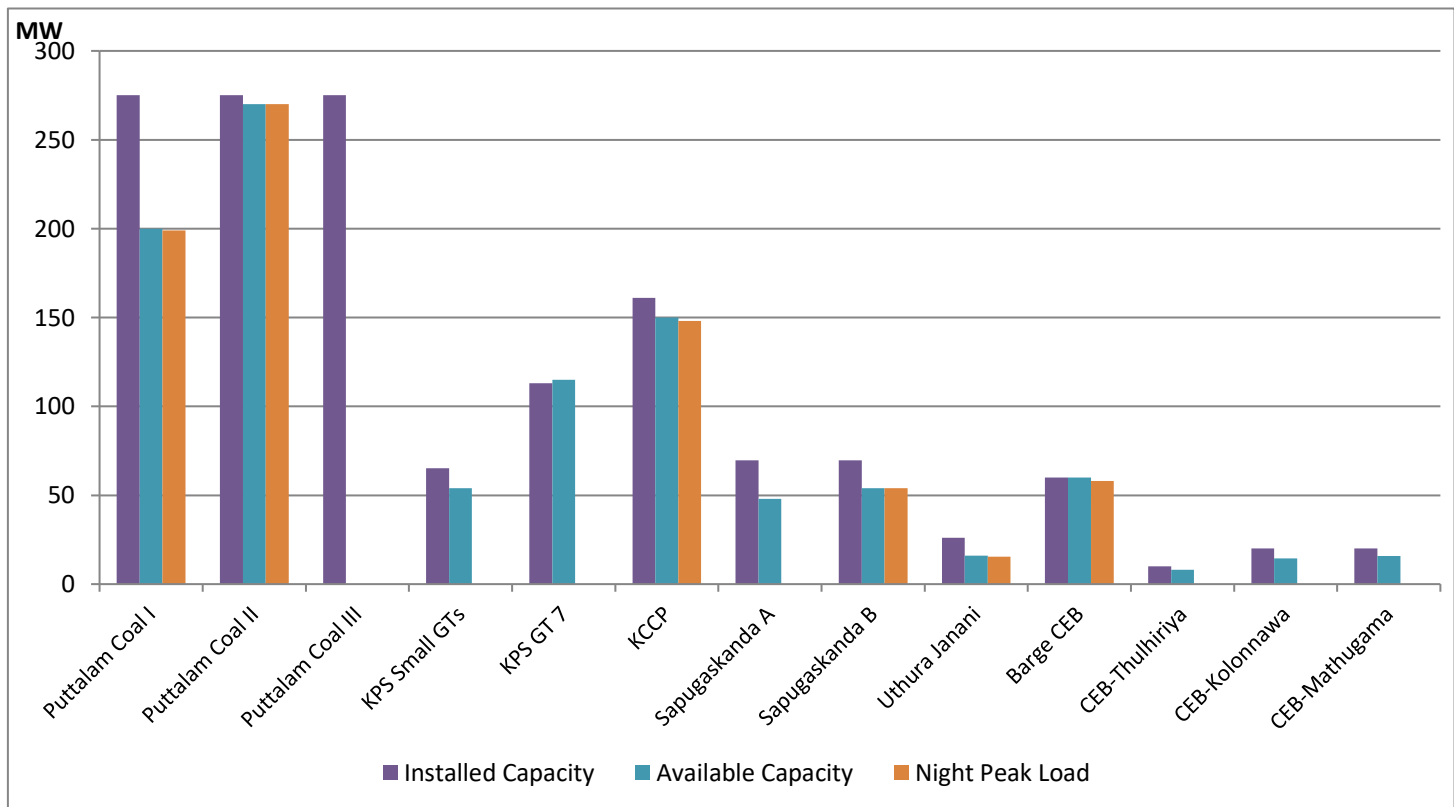
September 1, 2021



Available Generation is estimated based on plant availability at 6.00am on

September 2, 2021

## CEB owned Thermal Plant Loading at the Night Peak



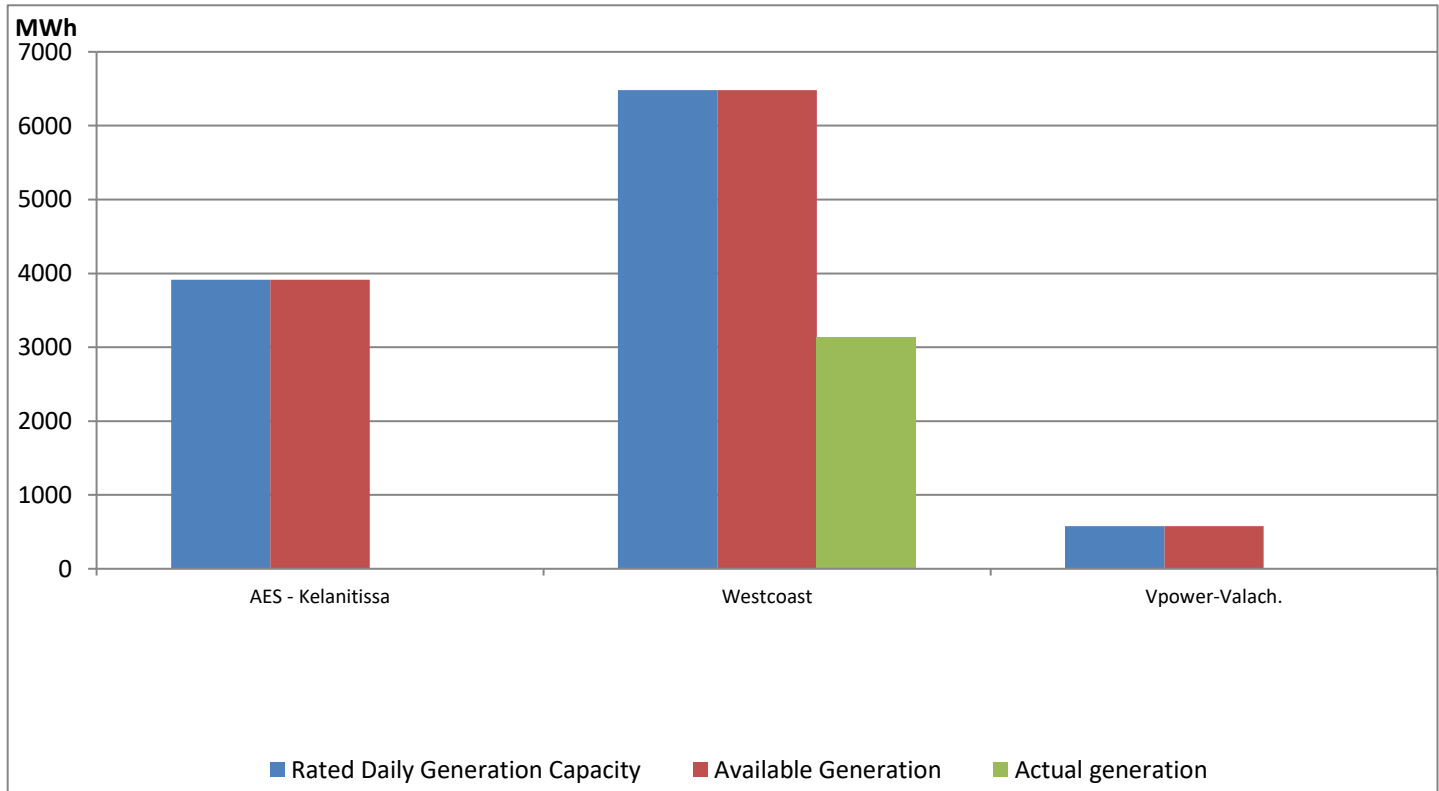
Note- Plant availability is recorded at 6.00 am on

September 2, 2021

## IPP owned Thermal Plant Dispatch

September 1, 2021

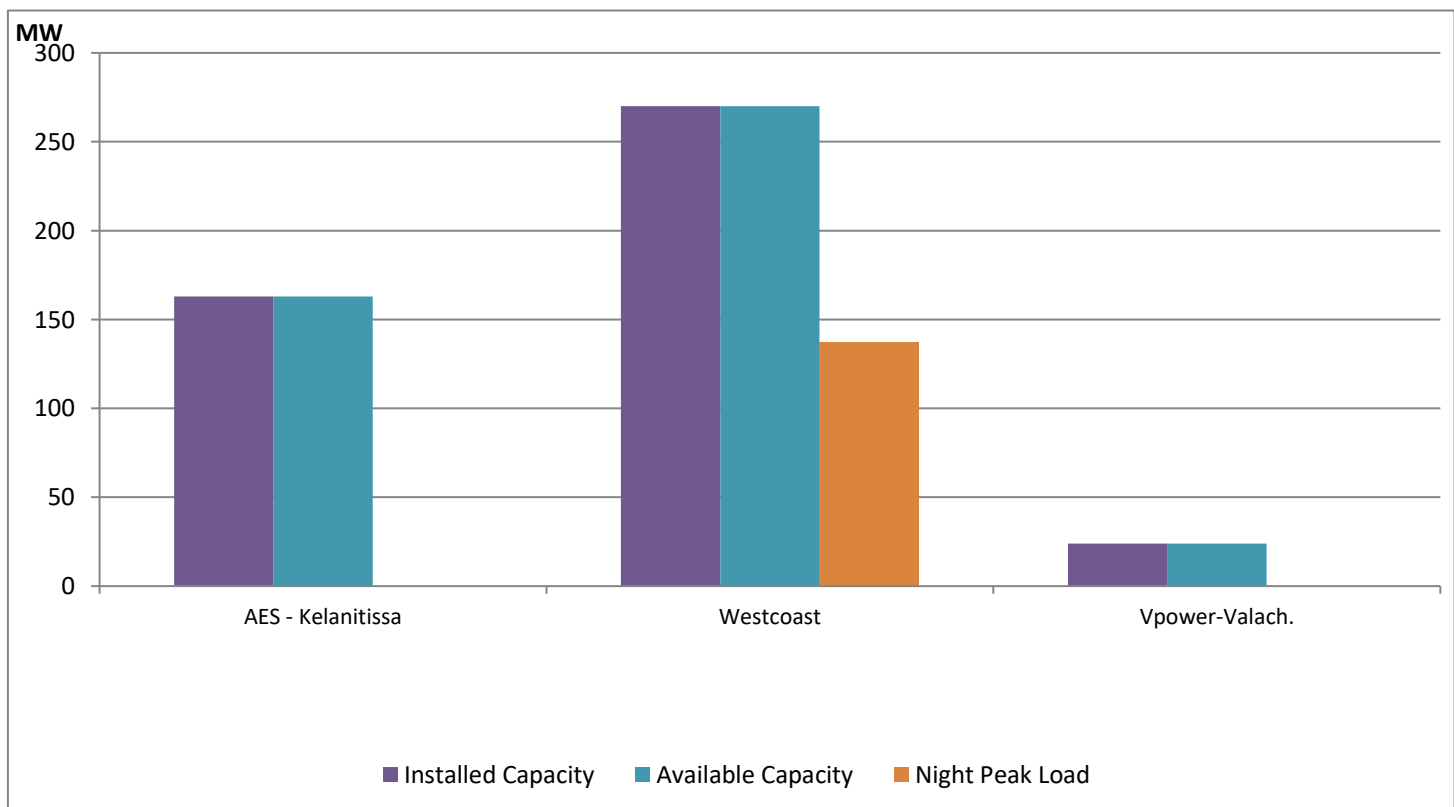
ACE Embilipitiya, ACE Matara, Asia Power, V Power Pallekale, Vpower Galle, V Power Horana, Vpower Hambantota and Altaqa Mahiyanganaya are not available due to expiration of PPAs



Available Generation is estimated based on plant availability at 6.00am on

September 2, 2021

## IPP owned Thermal Plant Loading at the Night Peak

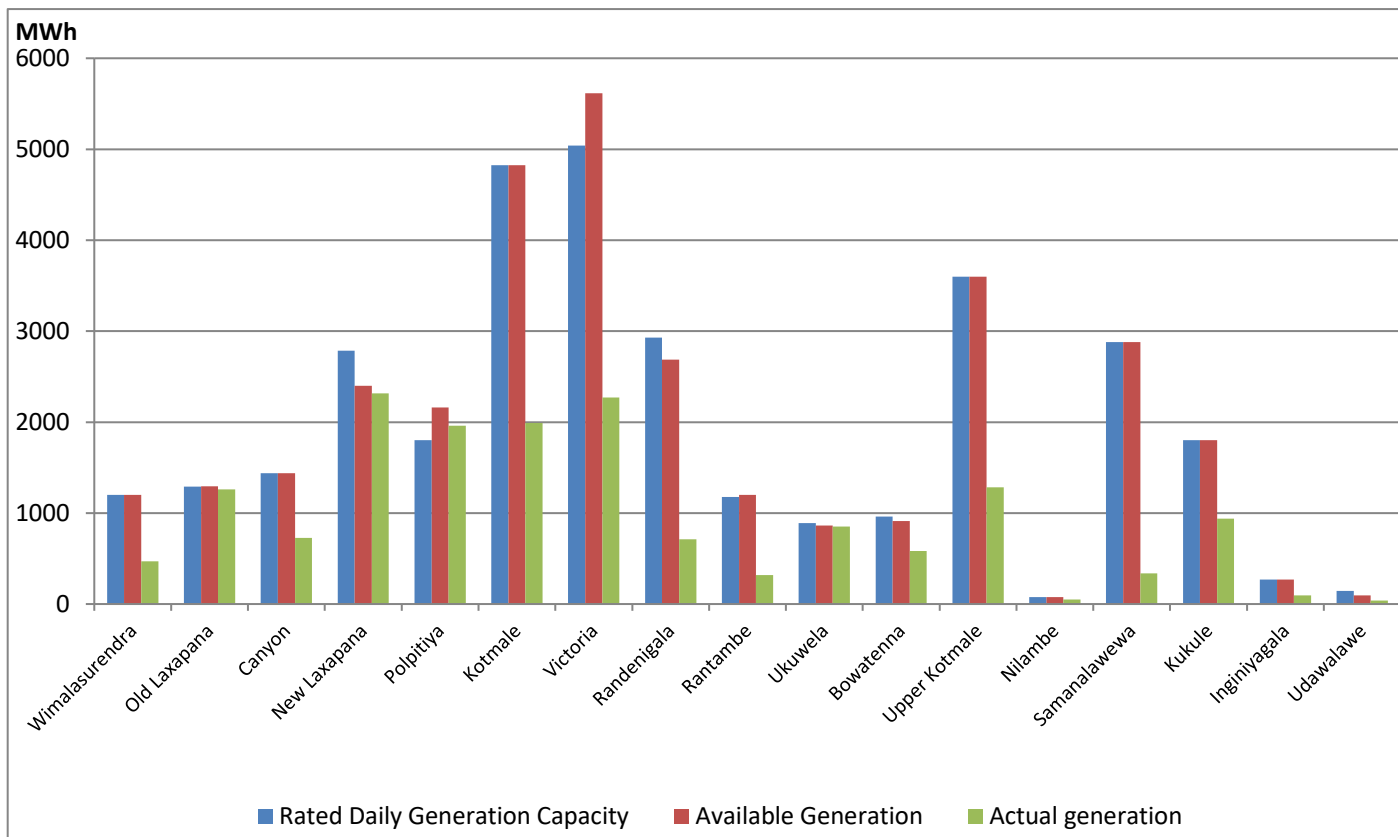


Note- Plant availability is recorded at 6.00 am on

September 2, 2021

## Major Hydro Plant Dispatch

September 1, 2021

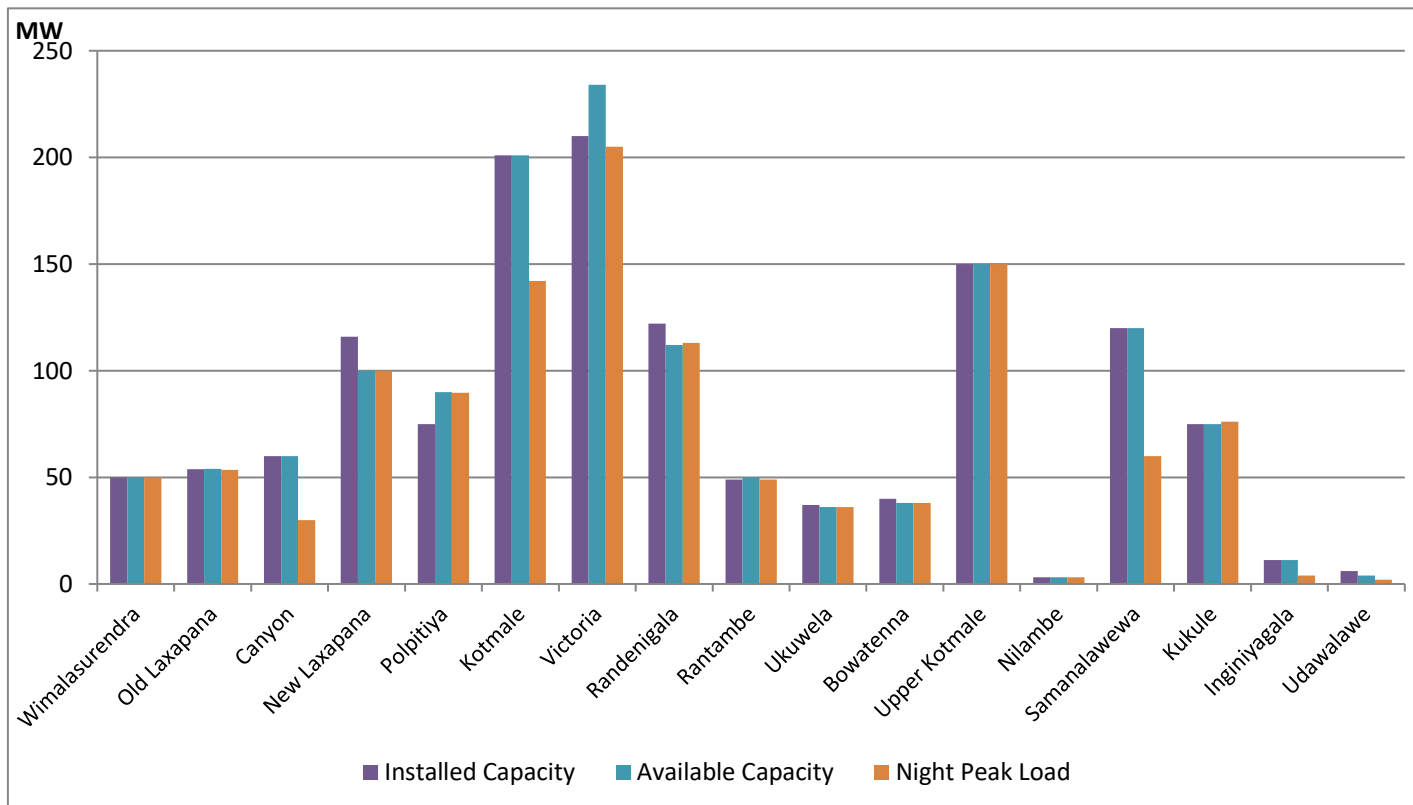


Note- Available Generation is estimated based on plant availability at 6.00am on

September 2, 2021

## Major Hydro Plant Loading at Night Peak

September 1, 2021



Note- Plant availability is recorded at 6.00 am on

September 2, 2021

Summary of Major Plant performance

Plant	Installed Capacity (MW)	Plant Availability (MW)	Night peak Load (MW)	Plant Dispatch (GWh)
Wimalasurendra	50.00	50.00	50.00	470.00
Old Laxapana	53.80	54.00	53.50	1,260.00
Canyon	60.00	60.00	30.00	727.00
New Laxapana	116.00	100.00	100.00	2,317.00
Polpitiya	75.00	90.00	89.60	1,960.00
Kotmale	201.00	201.00	142.00	1,990.00
Victoria	210.00	234.00	205.00	2,269.00
Randenigala	122.00	112.00	113.00	713.00
Rantambe	49.00	50.00	49.00	318.00
Ukuwela	37.00	36.00	36.00	850.00
Bowatenna	40.00	38.00	38.00	585.00
Upper Kotmale	150.00	150.00	150.00	1,284.00
Nilambe	3.20	3.20	3.20	49.00
Samanalawewa	120.00	120.00	60.00	336.00
Kukule	75.00	75.00	76.00	940.00
Inginiyagala	11.25	11.25	4.00	94.00
Udawalawe	6.00	4.00	2.00	39.00
Puttalam Coal I	275.00	200.00	199.00	5,267.00
Puttalam Coal II	275.00	270.00	270.00	6,476.00
Puttalam Coal III	275.00	-	-	-
KPS Small GTs	65.20	54.00	-	-
KPS GT 7	113.00	115.00	-	-
KCCP	161.00	150.00	148.00	1,774.00
Sapugaskanda A	69.60	48.00	-	-
Sapugaskanda B	69.60	54.00	54.00	1,222.00
Uthura Janani	26.01	16.00	15.50	289.00
Barge CEB	60.00	60.00	58.00	1,307.00
CEB-Thulhiriya	10.00	8.00	-	-
CEB-Kolonnawa	20.00	14.40	-	-
CEB-Mathugama	20.00	15.80	-	-
AES - Kelanitissa	163.00	163.00	-	-
Westcoast	270.00	270.00	137.00	3,134.00
Vpower-Valach.	24.00	24.00	-	-
Solar	58.00		-	233.00
Wind	128.00		124.50	3,524.00
MH and BM	394.00		103.10	Not available
Total without NCRE	3,538.46	2,850.65		

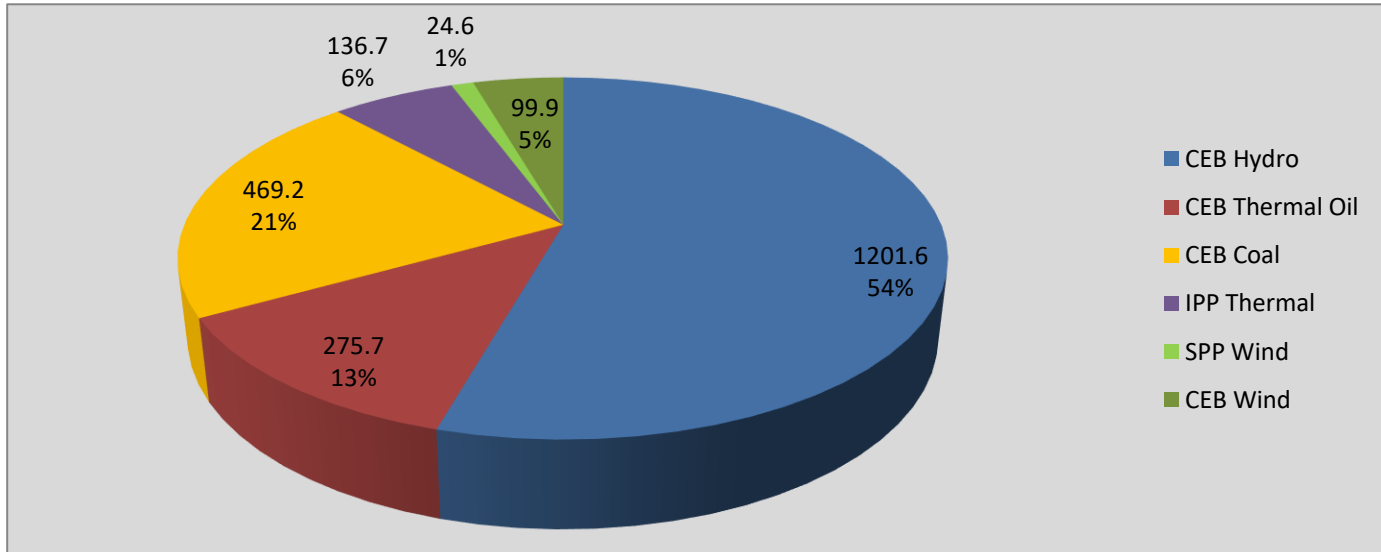
Night peak load of MH and BM only include loading of Minihydro plants of total capacity MW 194

Installed capacity of Solar, wind, Mini-hydro and Biomass plants are as of end of December 2019

Plant availability is the availability recorded at 6 am on September 2, 2021

## Contribution to the Night Peak in MW

September 1, 2021



Night Peak*	2,207.8 MW
Day Peak	1,814.9 MW
Minimum Demand	1,240.7 MW

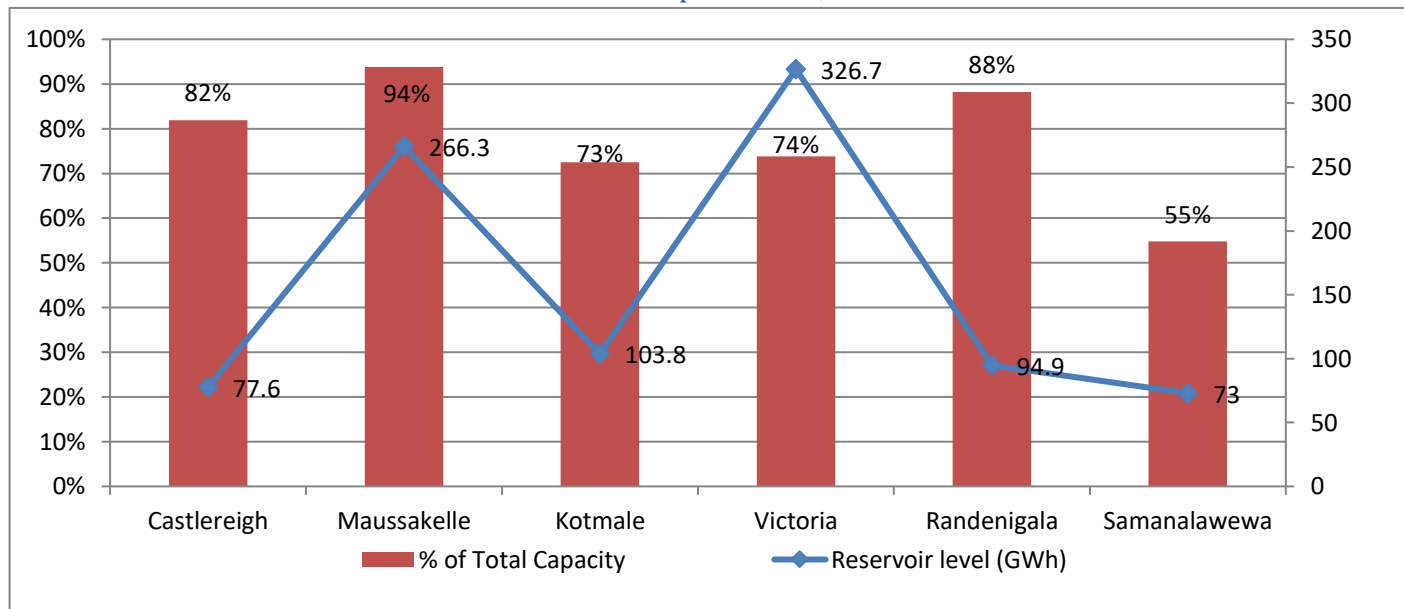
Notes:

\*The above chart pattern and night peak figure is presented excluding the contribution of Moragahakanda, other minihydro and biomass power plants

\*\*Day peak and Minimum demand includes the contribution from Moragahakanda, wind and solar plants

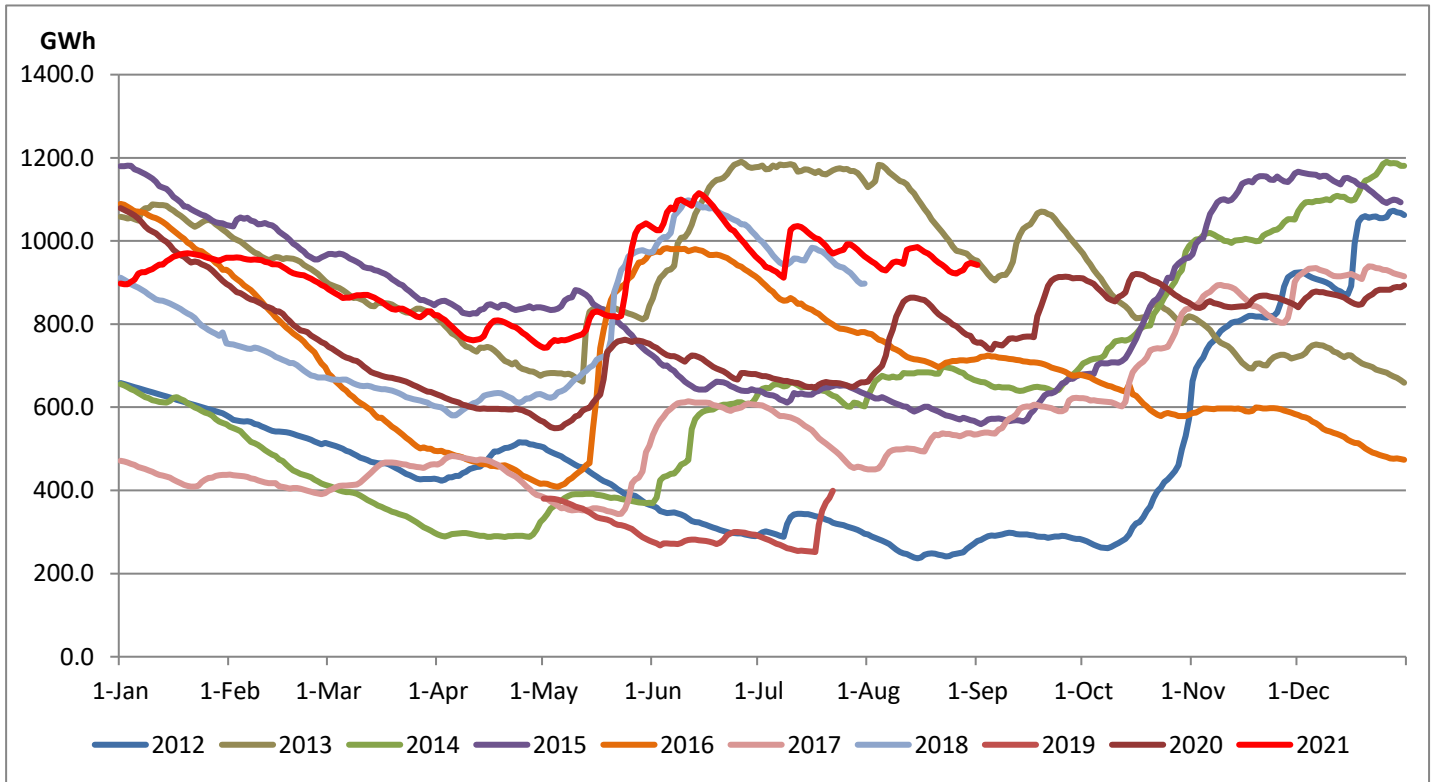
\* in addition to the night peak figure presented above, Kerawalapitiya waste heat plant, other MiniHydro and Biomass Plants of installed capacity 194.00 MW has recorded total 103.10 MW at night peak

## Reservoir Levels - as at 06.00 Hr on September 2, 2021



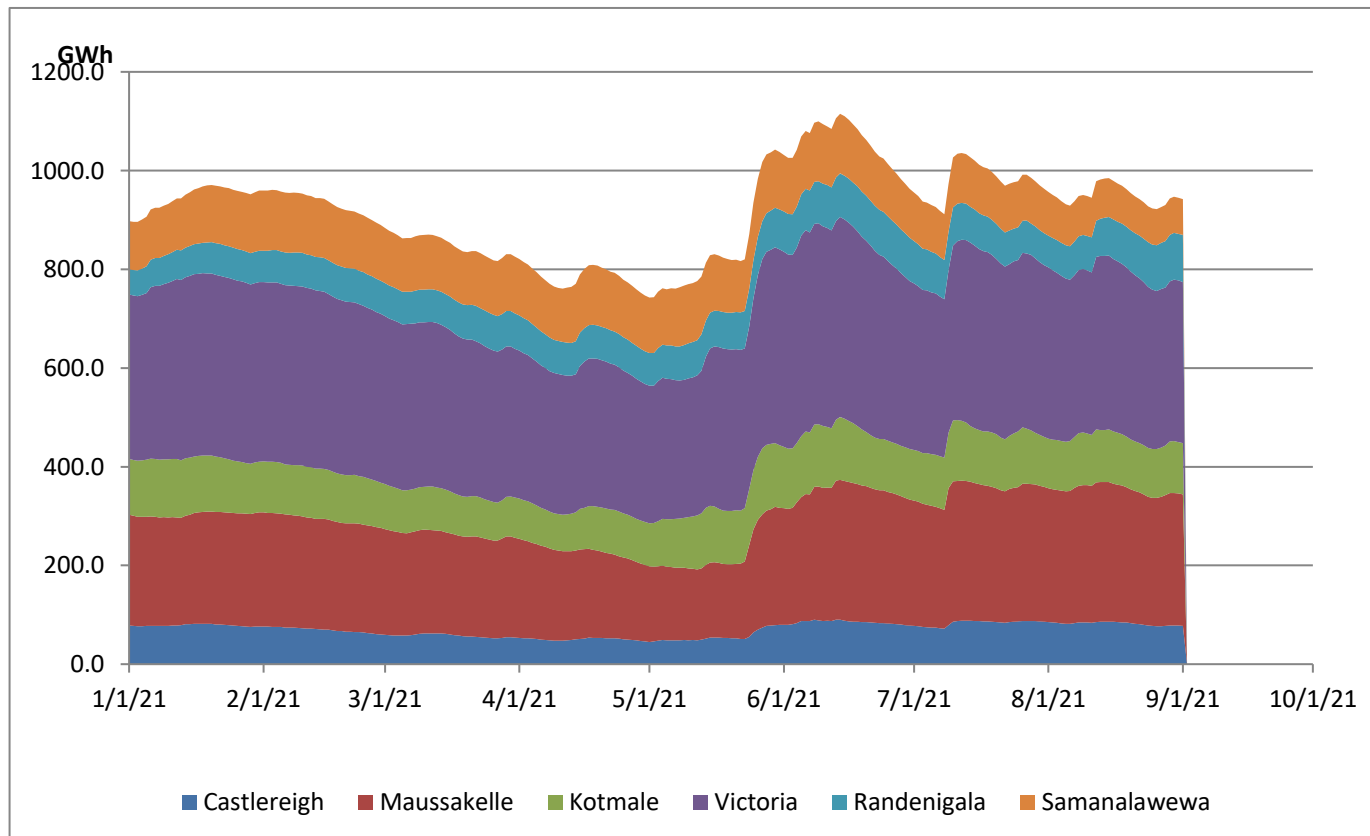
Total Reservoir Level(GWh)	942.3
% of Total capacity	78.2%

## Comparison of Total Reservoir Storage Levels with Past Years



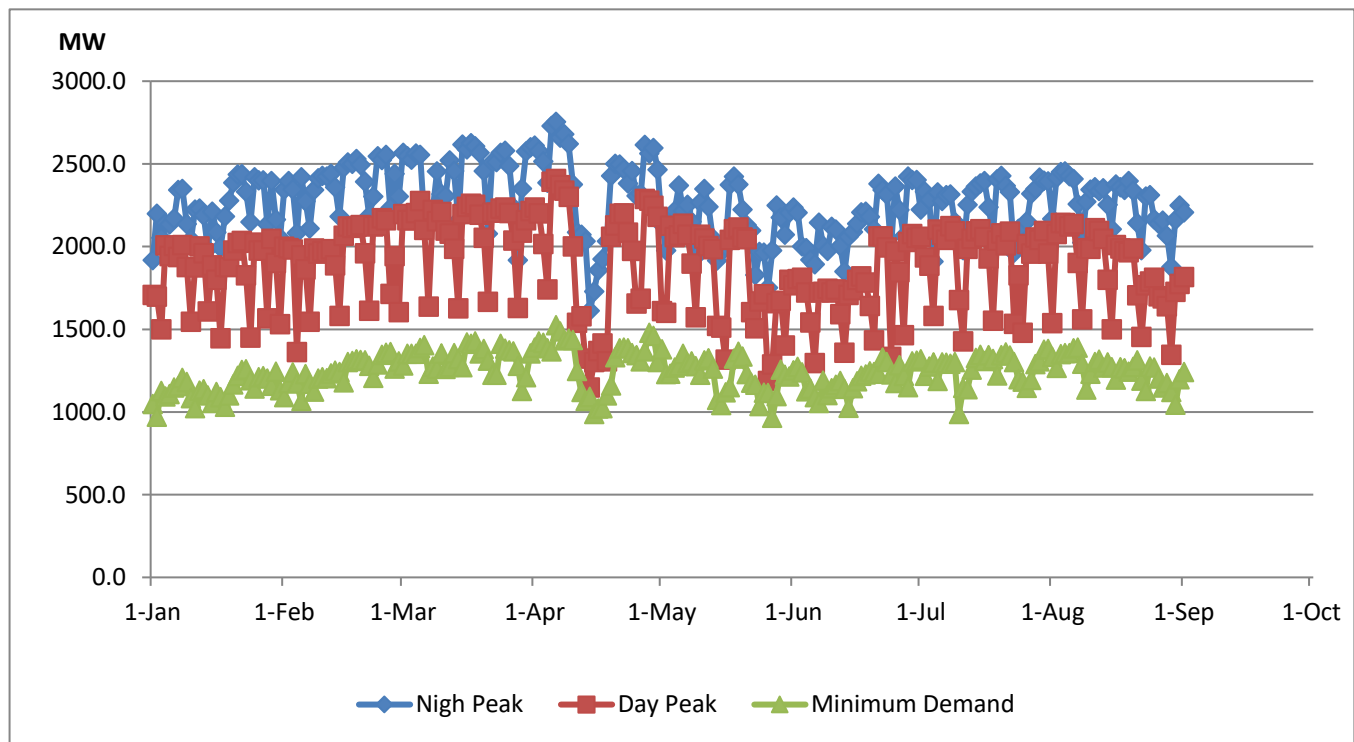
Data for 2018 and 2019 are only available for part of year.

## Variation of Major Hydro Reservoir Levels in the current year (GWh)





## Variation of Demand during the current year



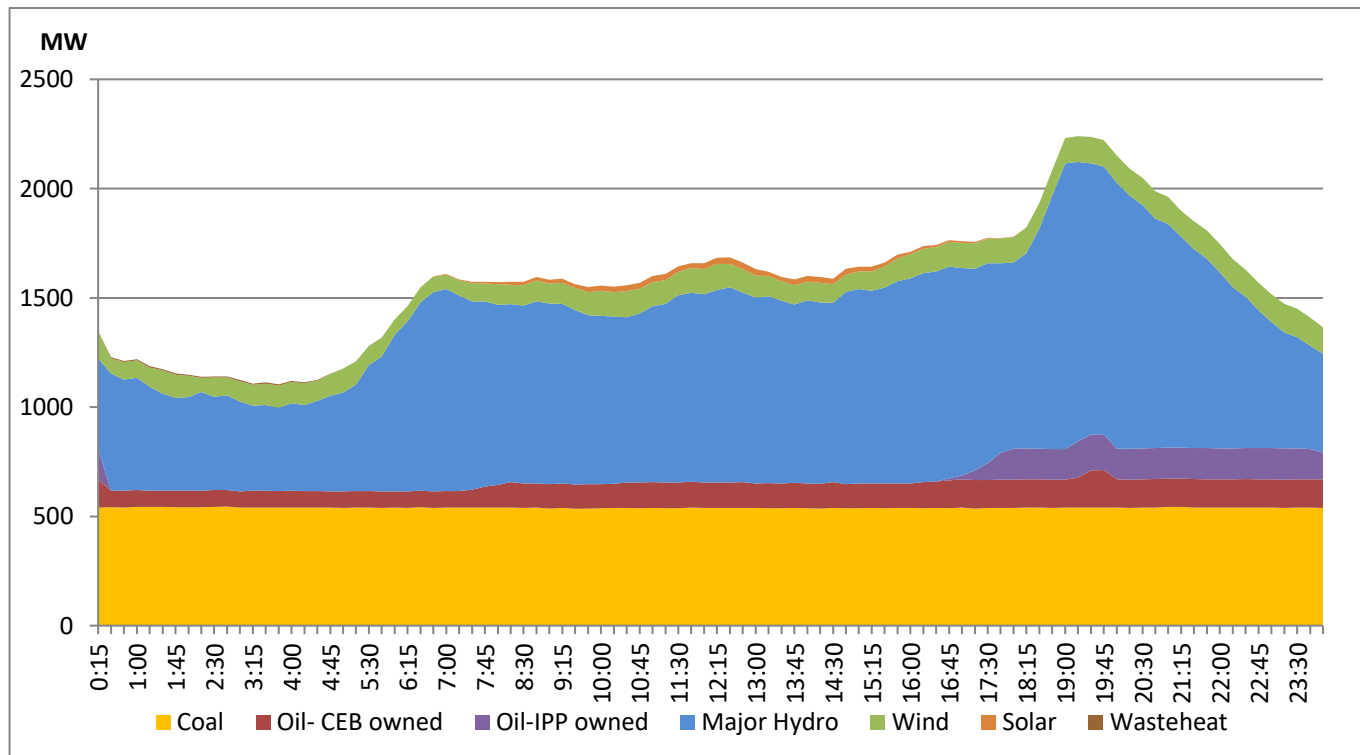
### Notes:

The night peak is excluding the contribution from Minihydro and biomass power plants  
 Day peak and minimum demand graphs includes the contribution from Moragahakanda power plant  
 All graphs include the contribution from telemetered solar and wind plants

## Daily Load Curve of the Previous day

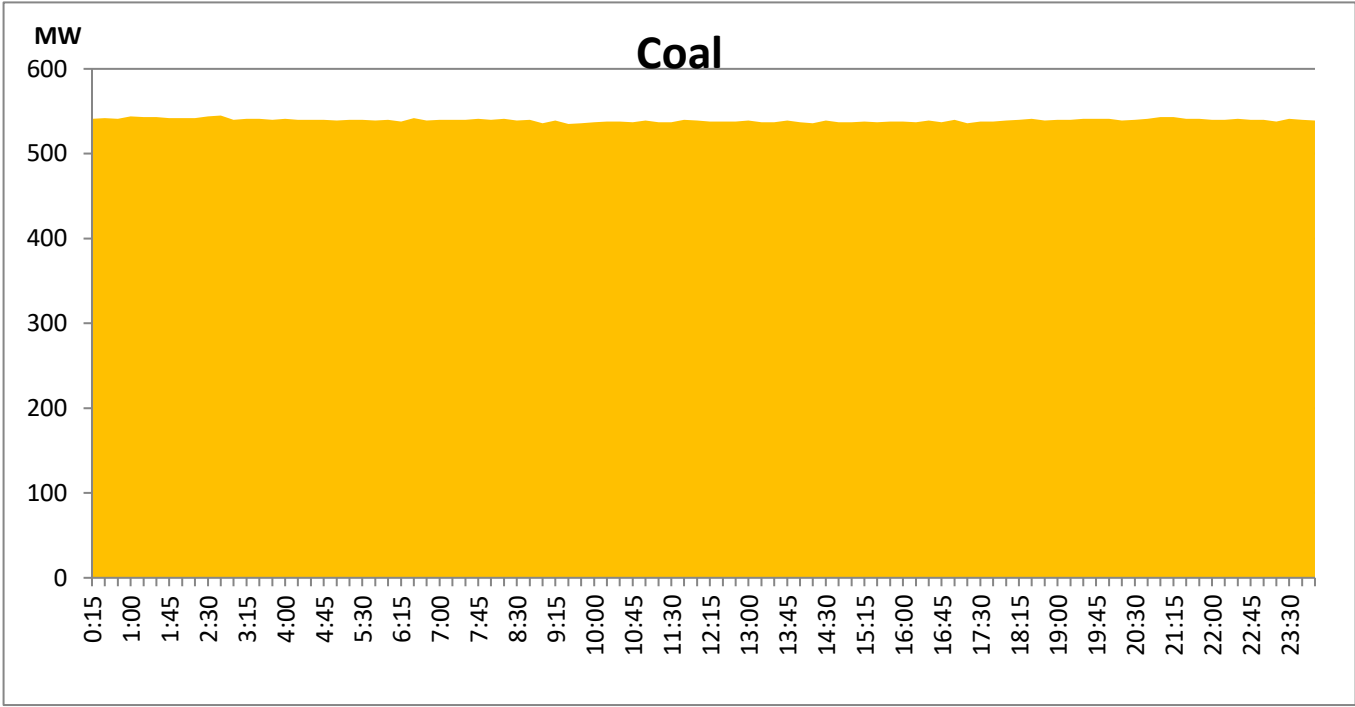
August 31, 2021

Solar and wind data is based on Telemetered Power Stations only



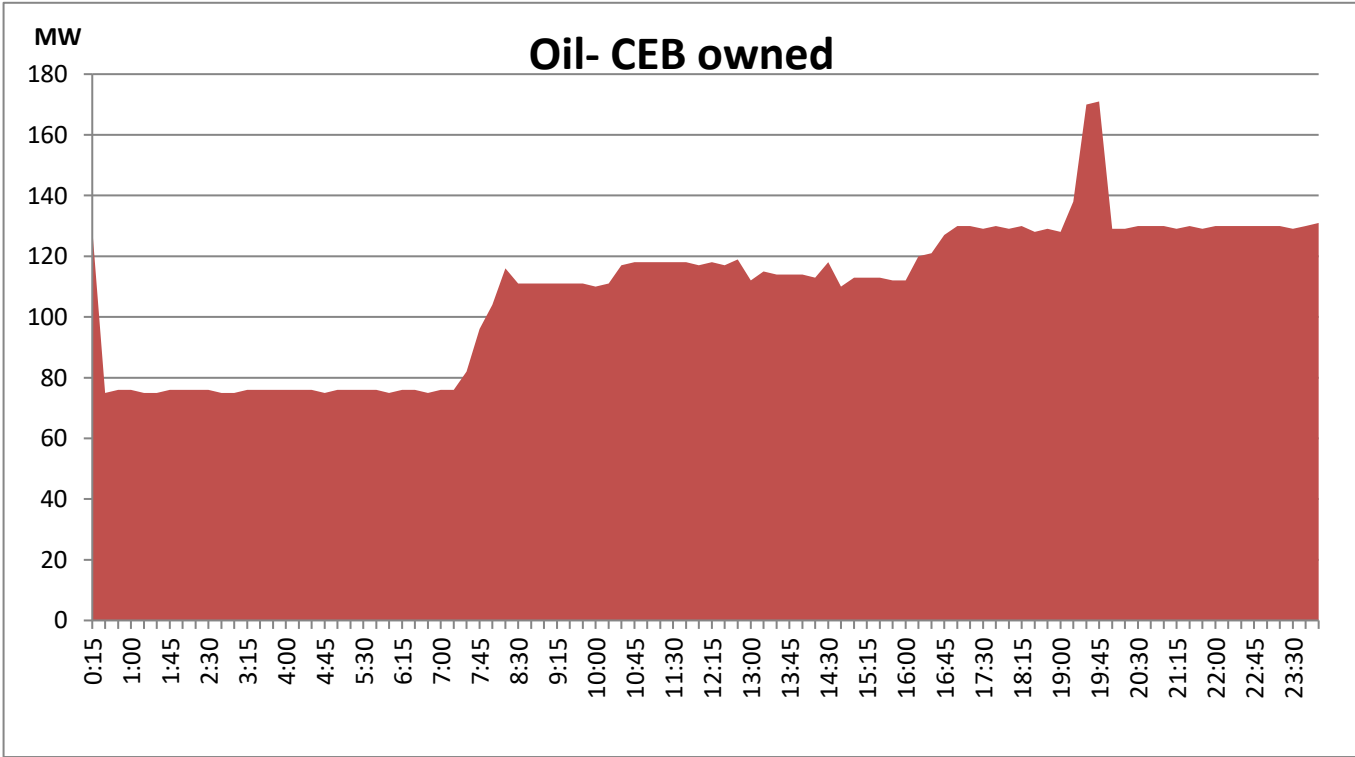
Coal Generation during the Previous day

August 31, 2021



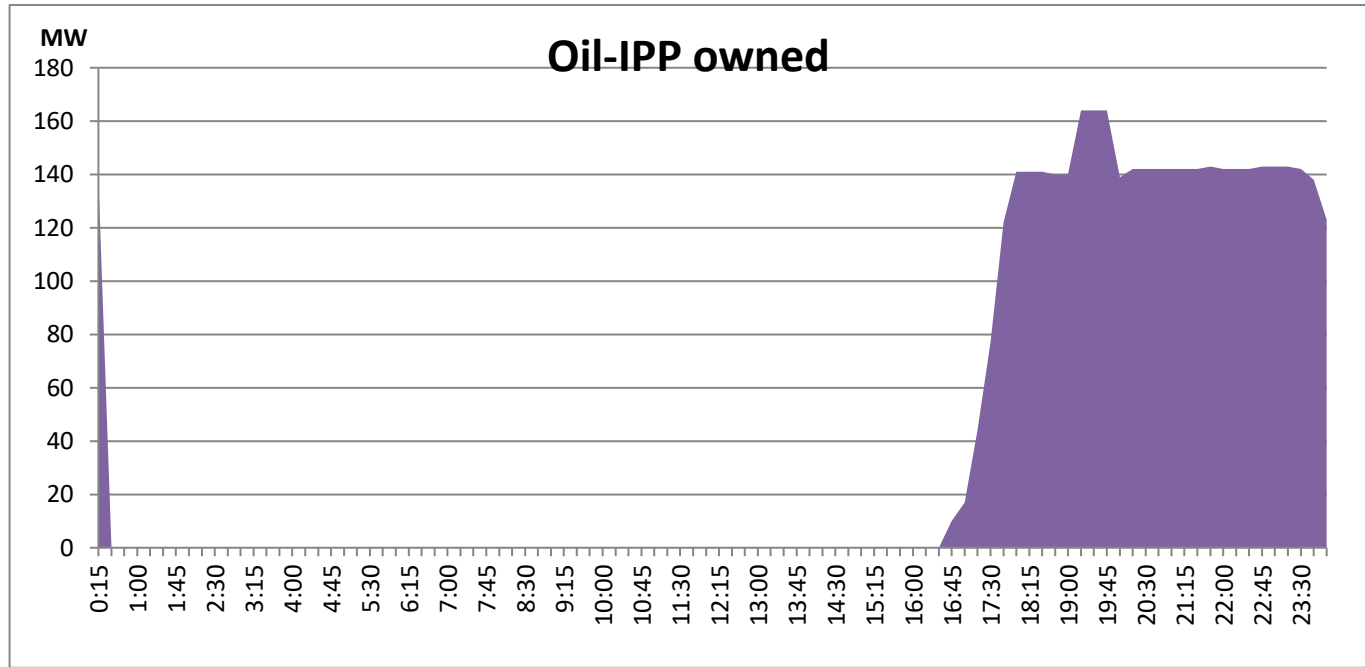
CEB Oil Plant Generation during the Previous day

August 31, 2021



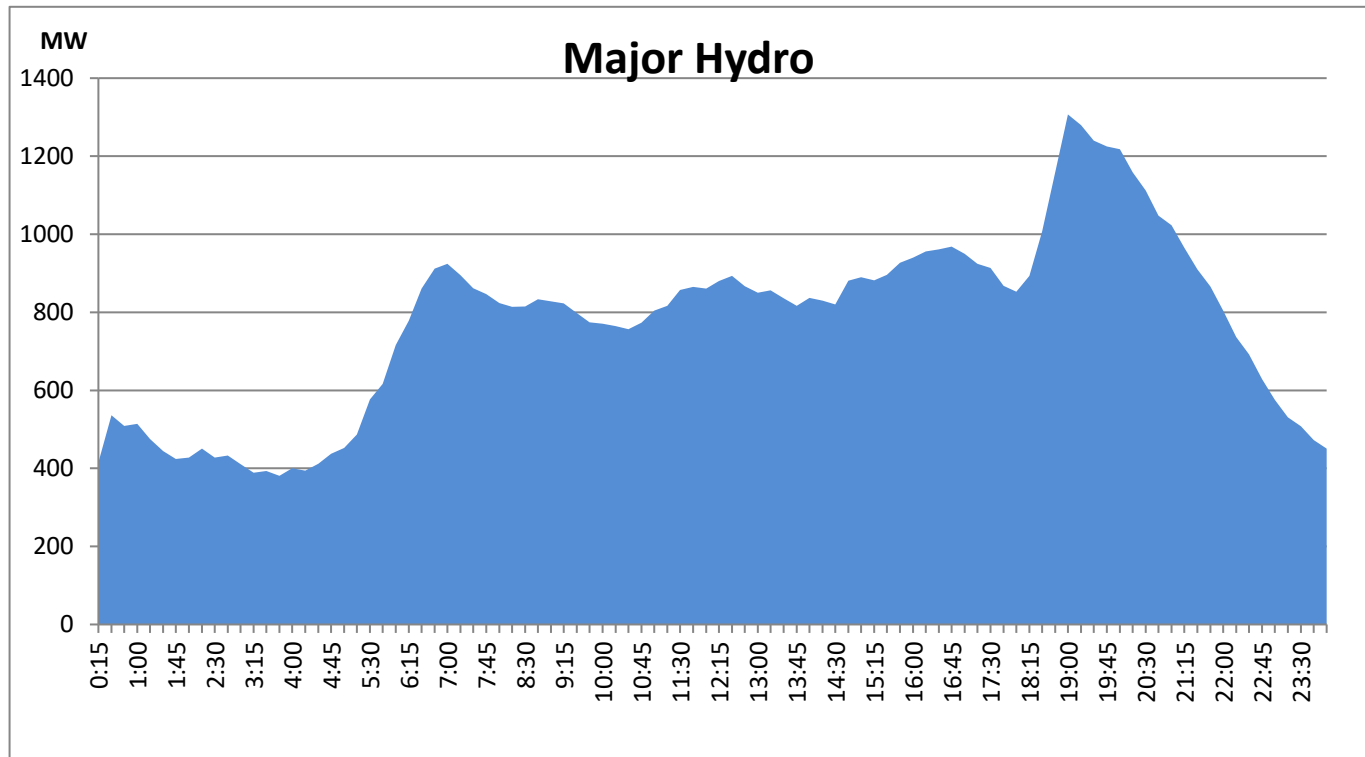
### IPP Oil Plant Generation during the Previous day

August 31, 2021



### Major Hydro Generation during the Previous day

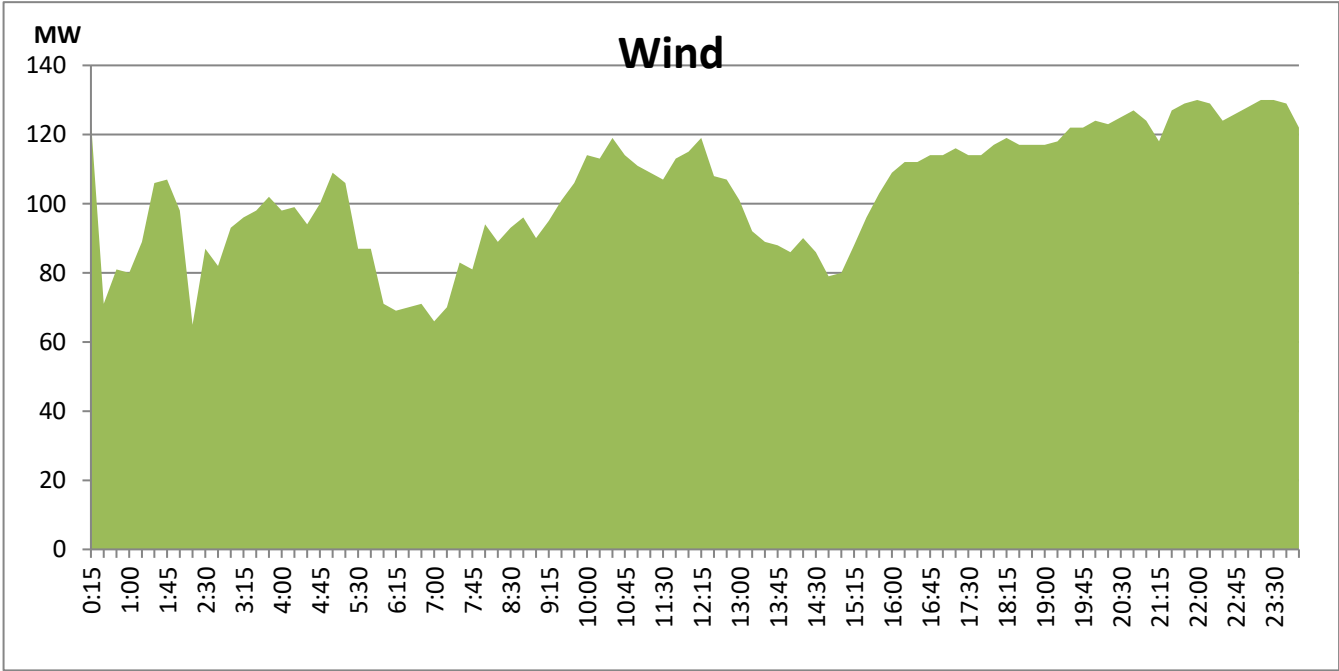
August 31, 2021



# Wind Generation during the Previous day

August 31, 2021

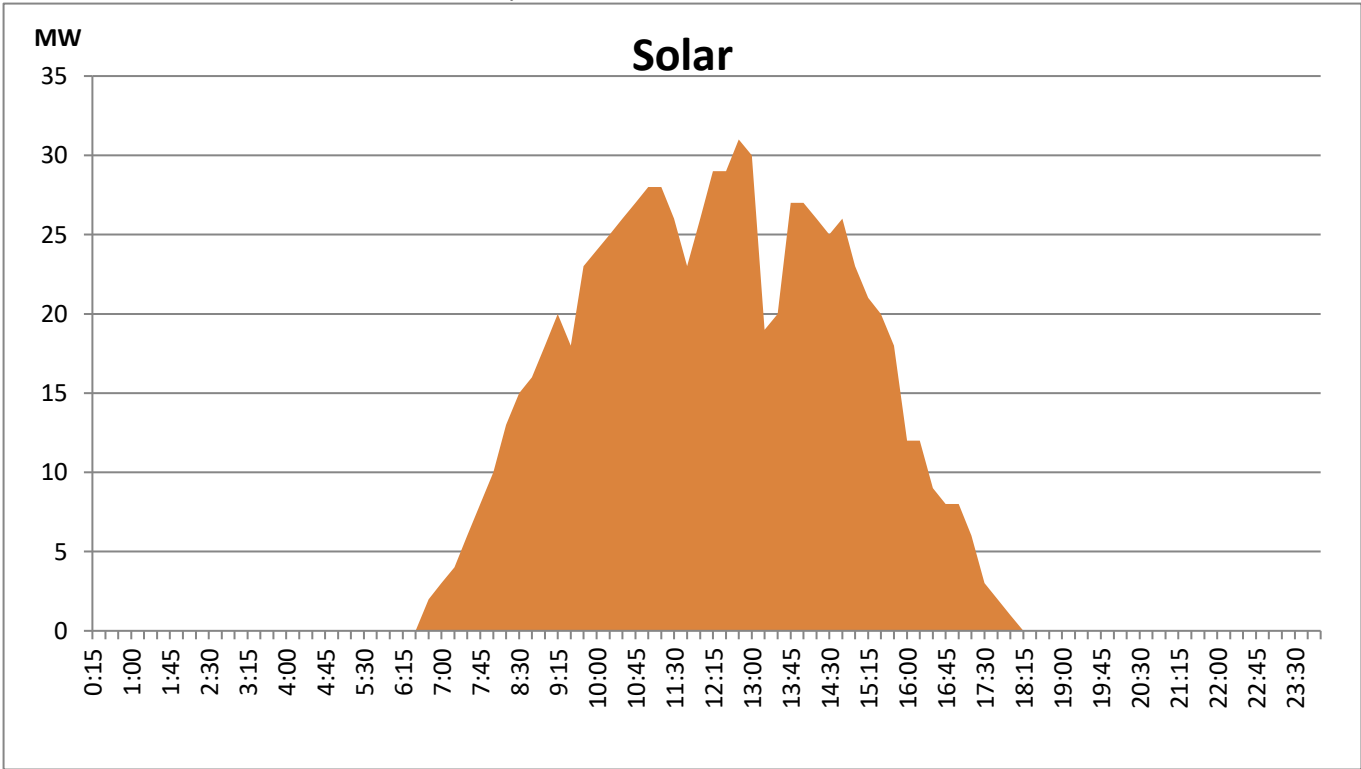
Based on Telemetered Power Stations only



# Solar Generation during the Previous day

August 31, 2021

Based on Telemetered Power Stations only



## Thermal Plant Fuel types

Power Station	Primary Fuel
CEB Thermal	
Sapugaskanda 1	Heavy Fuel
Sapugaskanda 2	Heavy Fuel
Kelanitissa Small Gas Turbines	Auto Diesel
GT 7 - Kelanitissa	Auto Diesel
Kelanitissa CCY	Naptha & Diesel
Lakvijaya 1	Coal
Lakvijaya 2	Coal
Lakvijaya 3	Coal
Uthuru Janani	Heavy Fuel
Barge CEB	Furnace Oil

Power Station	Primary Fuel
Private Thermal	
Sojitz -	Auto Diesel
West Coast	Low Sulphur Furnace oil

### Major Incidents during the day -as reported by CEB morning of

September 2, 2021

1) Randenigala unit 01 tripped at 16:13hrs rejecting 45MW from the system due to operation of Lower Guide bearing reservoir oil low/high alarm. Randenigala unit 01 made available at 16:22hrs.