

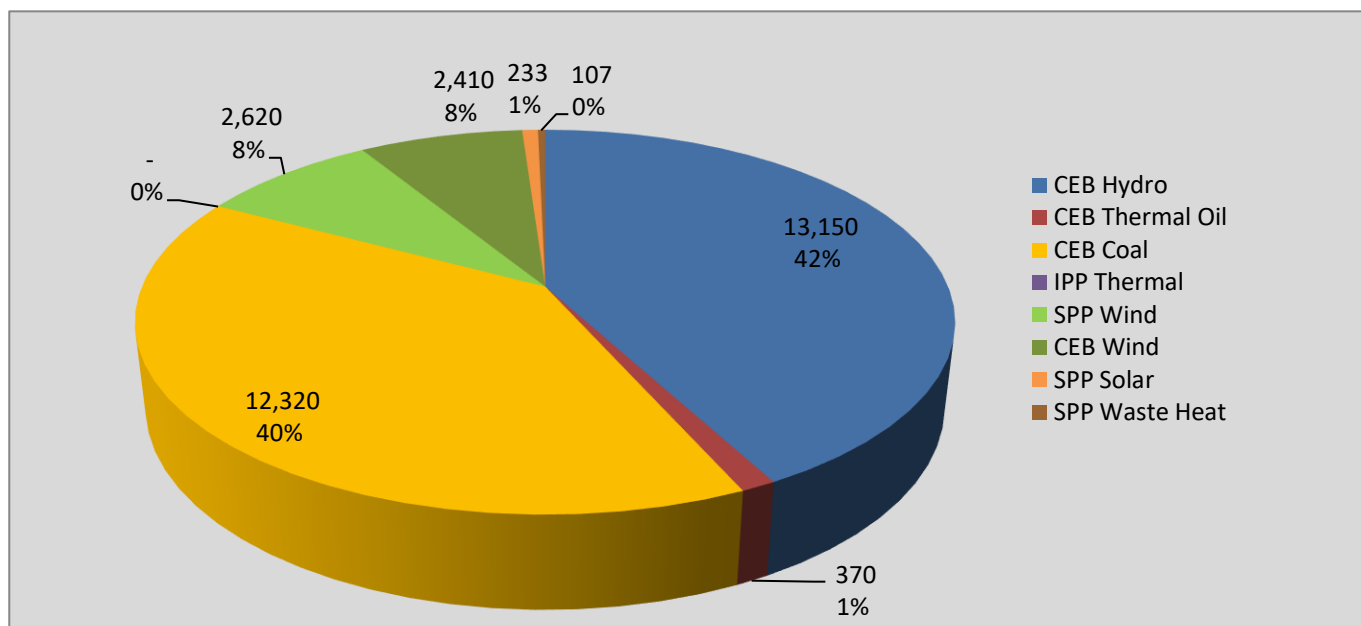
Generation and Reservoirs Statistics

August 29, 2021



PUBLIC UTILITIES COMMISSION OF SRI LANKA

Daily Generation Mix in MWh



Total Generation 31,210 MWh

Note: Minihydro and Biomass and waste heat (except 10 MW WH plant at Kerawalapitiya) power plant energy is not included

Cumulative Dispatch

Note: Minihydro and Biomass and waste heat (except 10 MW WH plant at Kerawalapitiya) power plant energy is not included

For Current Month

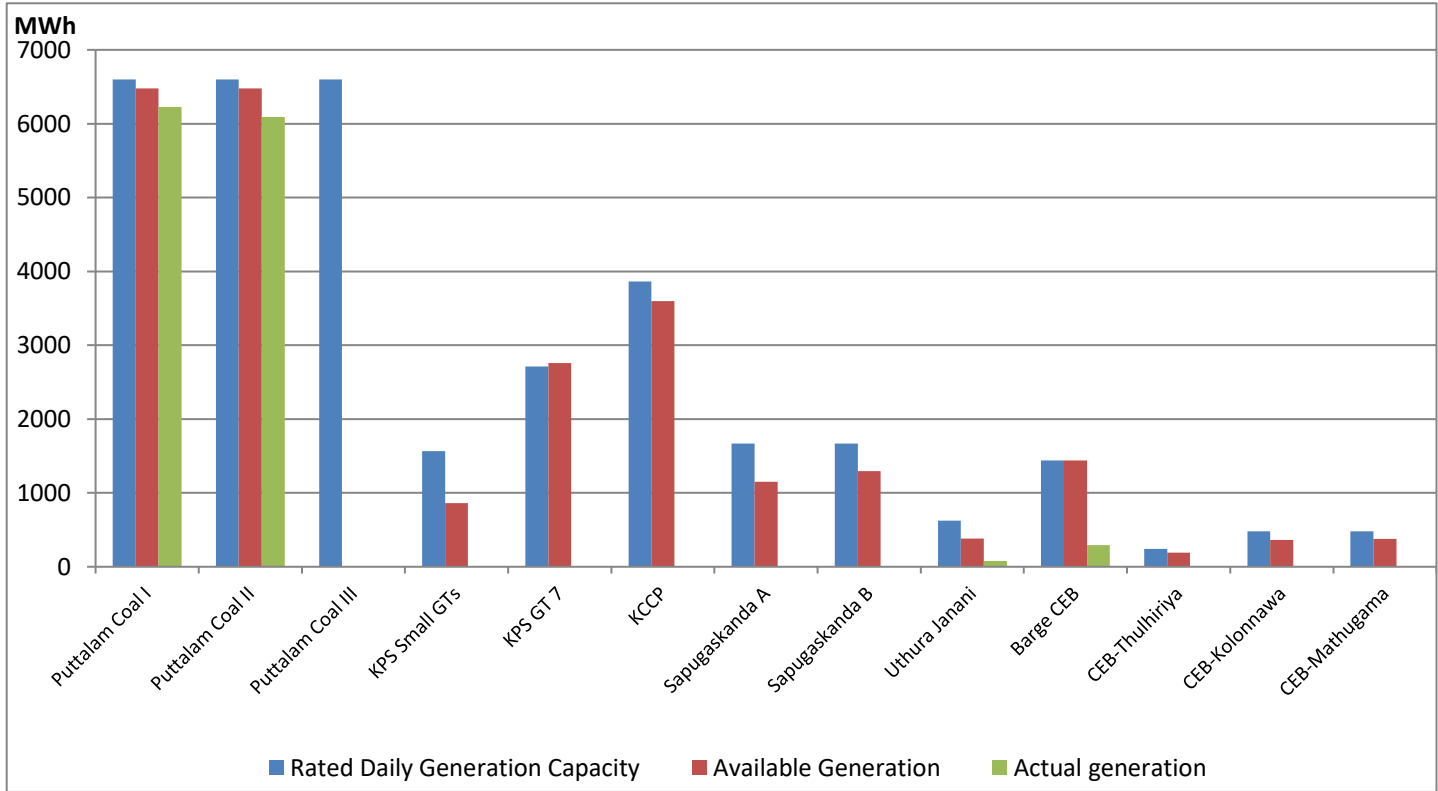
| Category | Dispatch (GWh) | Percentage |
|-----------------|----------------|------------|
| CEB Hydro | 453.6 | 38.89% |
| CEB Thermal Oil | 64.0 | 5.49% |
| CEB Coal | 532.7 | 45.68% |
| IPP Thermal | 21.6 | 1.85% |
| SPP Wind | 30.5 | 2.61% |
| CEB Wind | 49.8 | 4.27% |
| SPP Solar | 7.8 | 0.67% |
| SPP Waste Heat | 6.4 | 0.55% |
| Total | 1,166.3 | |

For Current Year

| Category | Dispatch (GWh) | Percentage |
|-----------------|----------------|------------|
| CEB Hydro | 3,189.2 | 32.93% |
| CEB Thermal Oil | 893.7 | 9.23% |
| CEB Coal | 4,001.0 | 41.31% |
| IPP Thermal | 1,180.8 | 12.19% |
| SPP Wind | 135.1 | 1.40% |
| CEB Wind | 199.3 | 2.06% |
| SPP Solar | 64.6 | 0.67% |
| SPP Waste Heat | 21.1 | 0.22% |
| Total | 9,684.8 | |

CEB owned Thermal Plant Dispatch

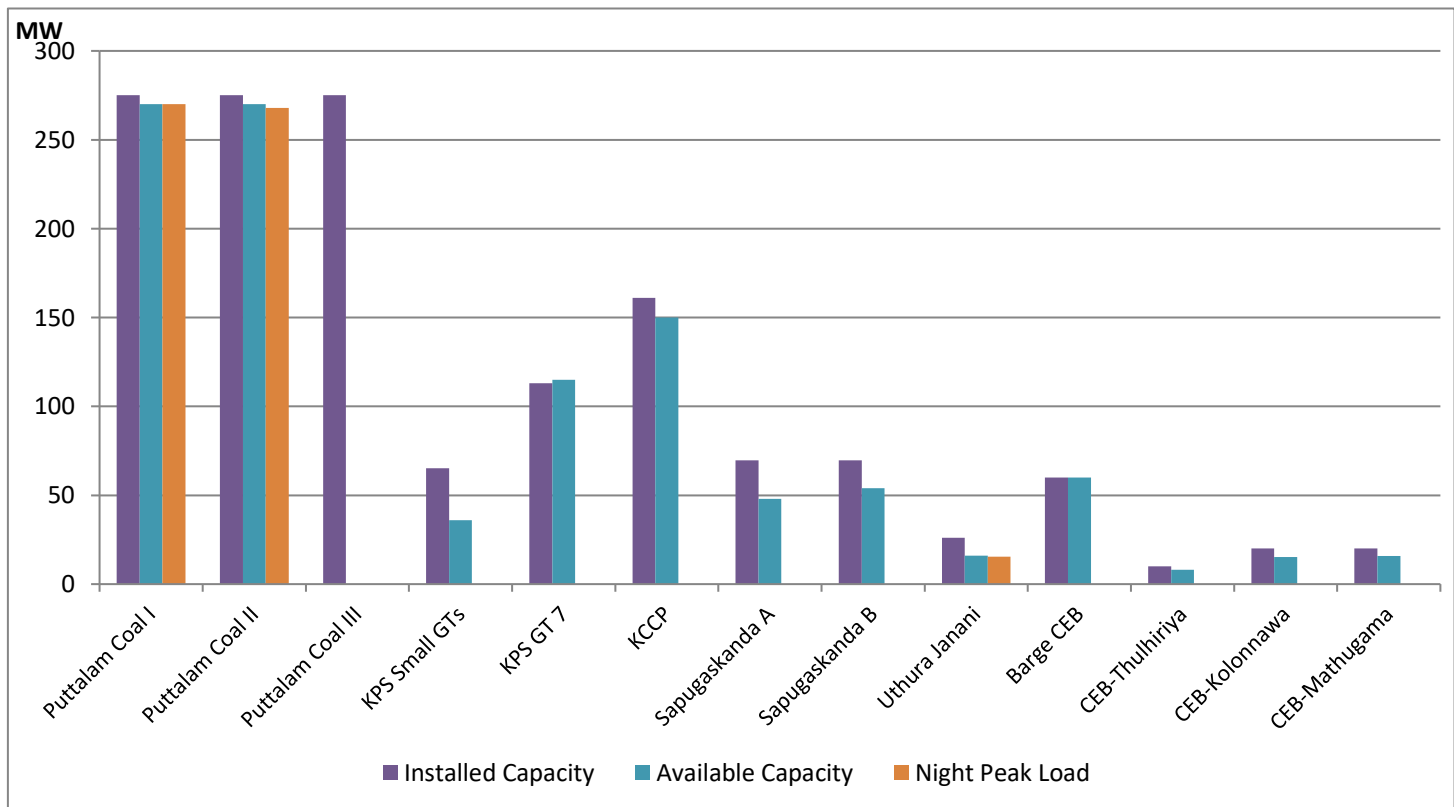
August 29, 2021



Available Generation is estimated based on plant availability at 6.00am on

August 30, 2021

CEB owned Thermal Plant Loading at the Night Peak



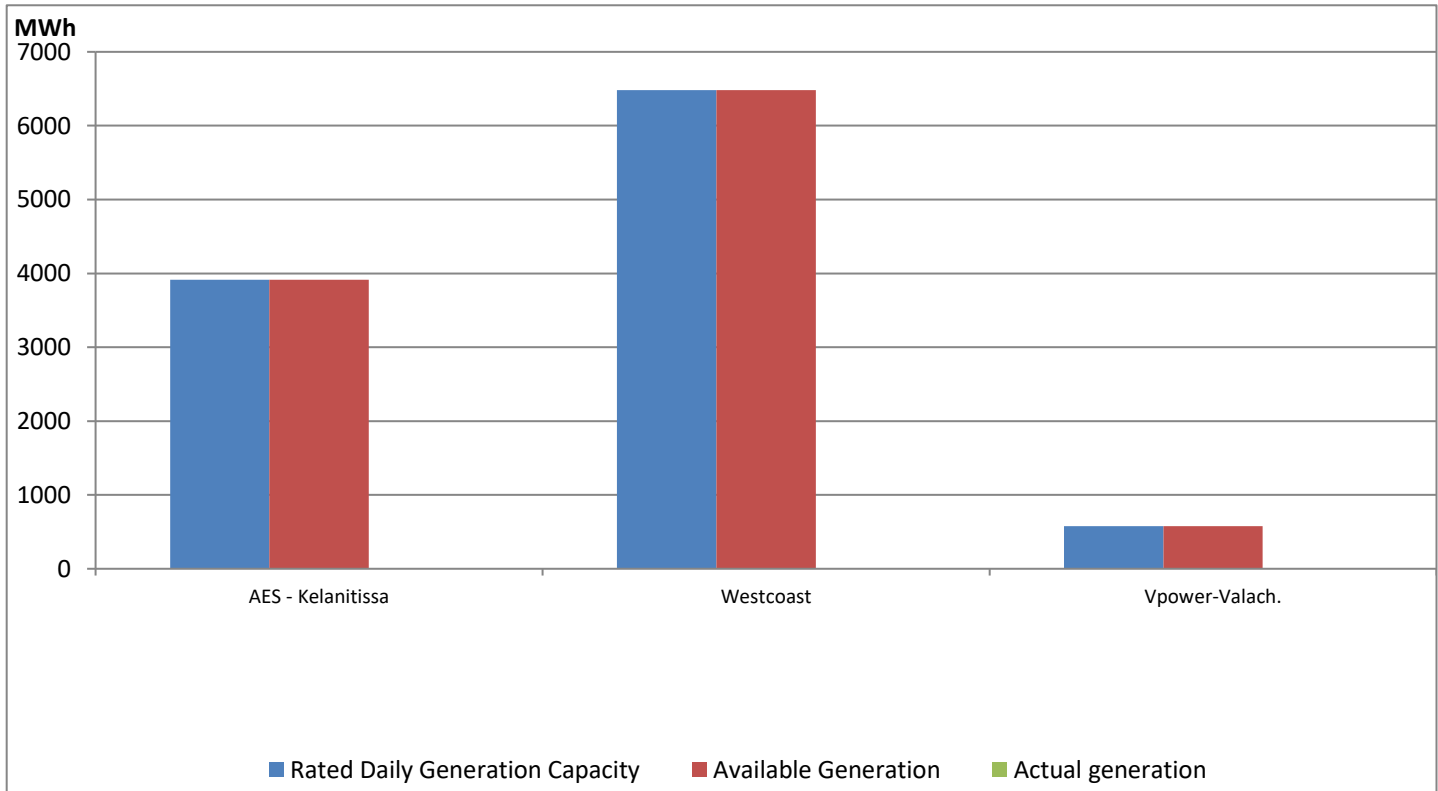
Note- Plant availability is recorded at 6.00 am on

August 30, 2021

IPP owned Thermal Plant Dispatch

August 29, 2021

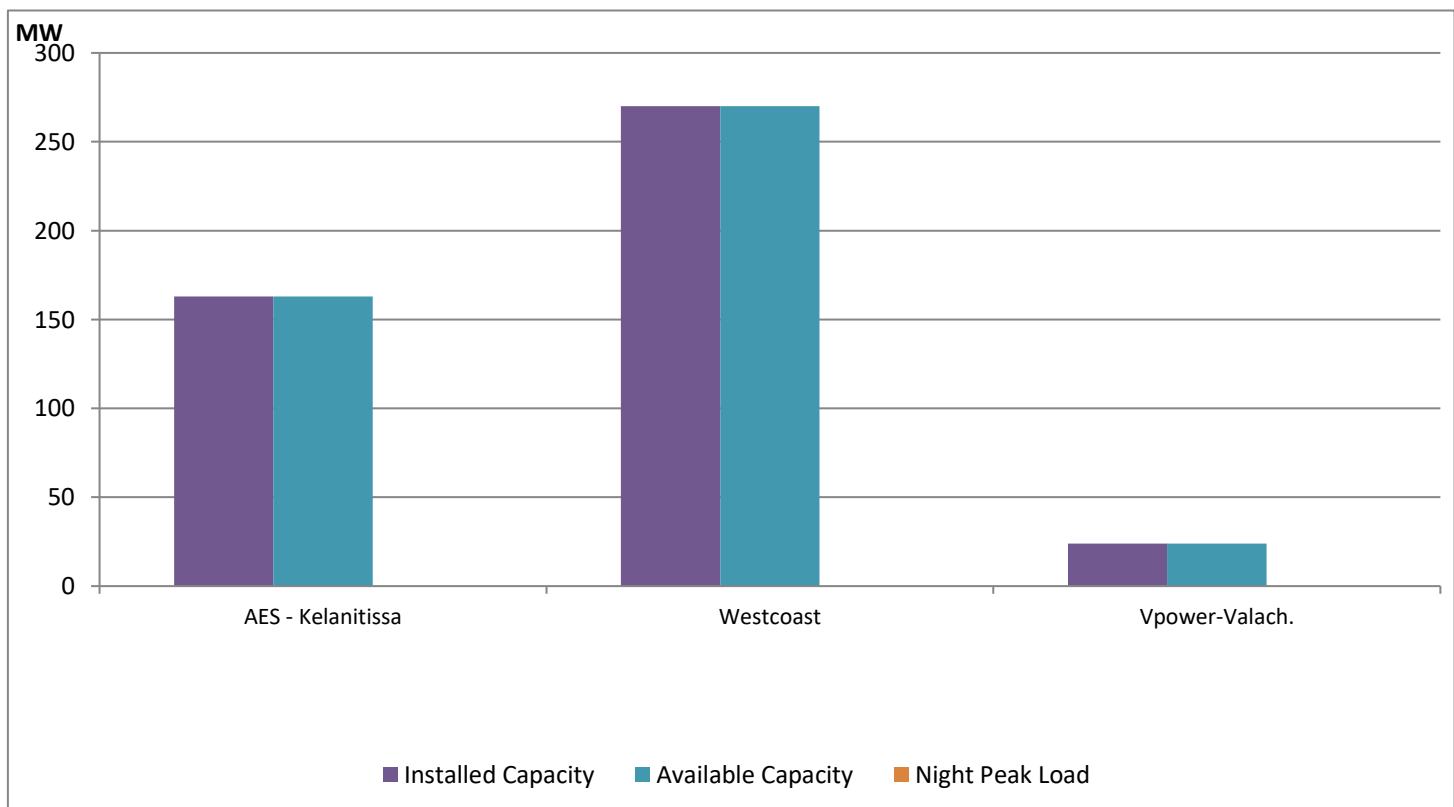
ACE Embilipitiya, ACE Matara, Asia Power, V Power Pallekale, Vpower Galle, V Power Horana, Vpower Hambantota and Altaqa Mahiyanganaya are not available due to expiration of PPAs



Available Generation is estimated based on plant availability at 6.00am on

August 30, 2021

IPP owned Thermal Plant Loading at the Night Peak

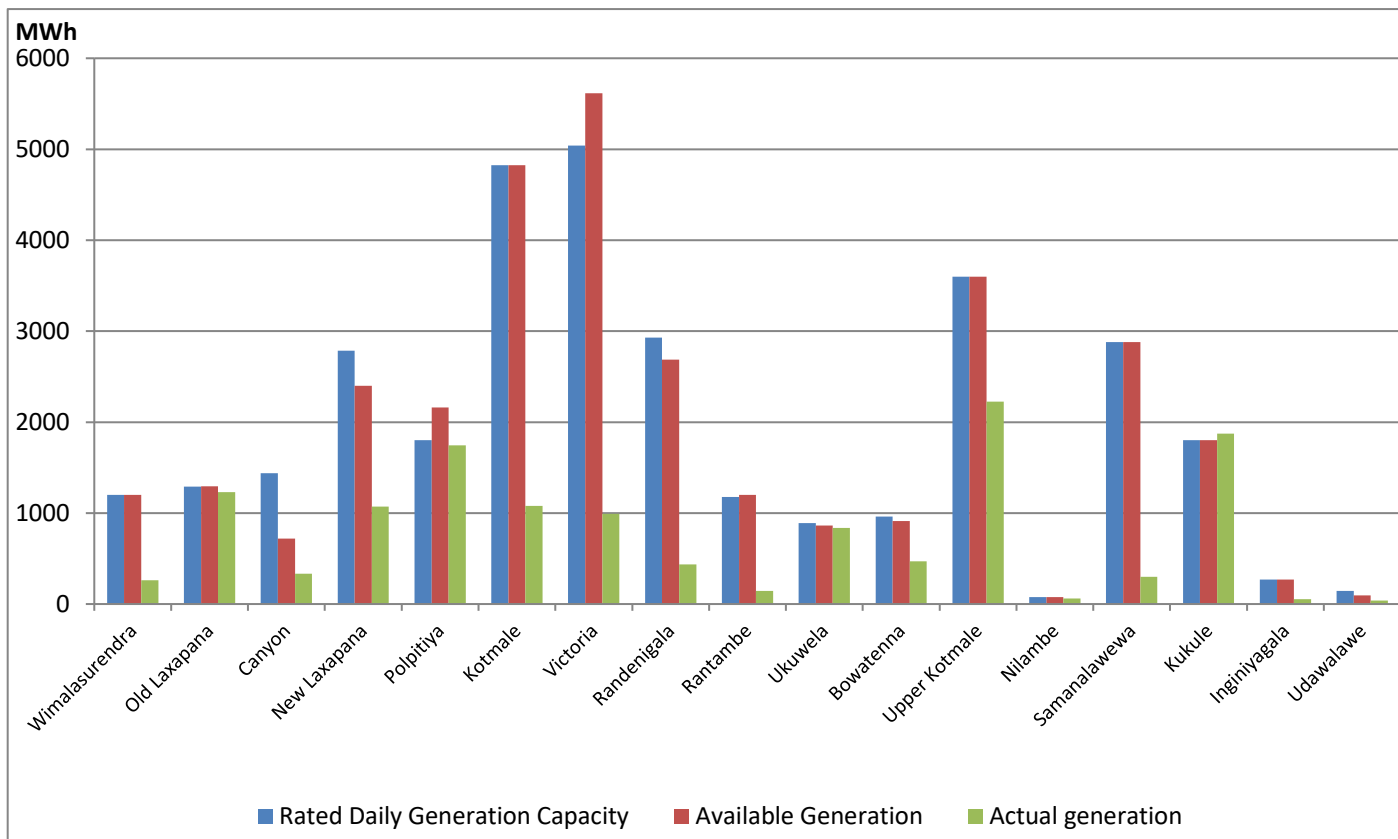


Note- Plant availability is recorded at 6.00 am on

August 30, 2021

Major Hydro Plant Dispatch

August 29, 2021

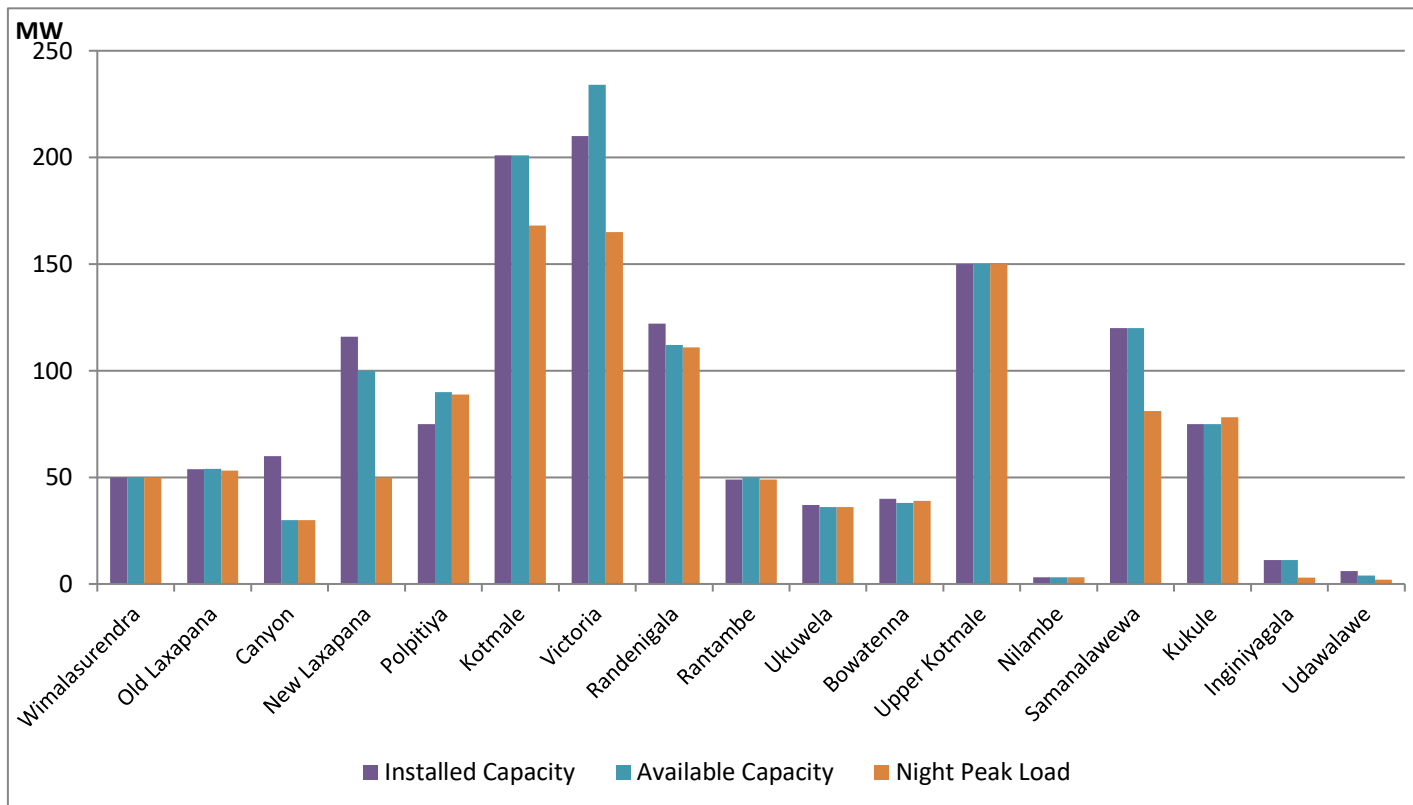


Note- Available Generation is estimated based on plant availability at 6.00am on

August 30, 2021

Major Hydro Plant Loading at Night Peak

August 29, 2021



Note- Plant availability is recorded at 6.00 am on

August 30, 2021

Summary of Major Plant performance

| Plant | Installed Capacity (MW) | Plant Availability (MW) | Night peak Load (MW) | Plant Dispatch (GWh) |
|--------------------|----------------------------|----------------------------|-------------------------|-------------------------|
| Wimalasurendra | 50.00 | 50.00 | 50.00 | 261.00 |
| Old Laxapana | 53.80 | 54.00 | 53.20 | 1,229.00 |
| Canyon | 60.00 | 30.00 | 30.00 | 335.00 |
| New Laxapana | 116.00 | 100.00 | 50.00 | 1,070.00 |
| Polpitiya | 75.00 | 90.00 | 88.90 | 1,744.00 |
| Kotmale | 201.00 | 201.00 | 168.00 | 1,080.00 |
| Victoria | 210.00 | 234.00 | 165.00 | 992.00 |
| Randenigala | 122.00 | 112.00 | 111.00 | 434.00 |
| Rantambe | 49.00 | 50.00 | 49.00 | 146.00 |
| Ukuwela | 37.00 | 36.00 | 36.00 | 835.00 |
| Bowatenna | 40.00 | 38.00 | 39.00 | 470.00 |
| Upper Kotmale | 150.00 | 150.00 | 150.00 | 2,225.00 |
| Nilambe | 3.20 | 3.20 | 3.20 | 60.00 |
| Samanalawewa | 120.00 | 120.00 | 81.00 | 300.00 |
| Kukule | 75.00 | 75.00 | 78.20 | 1,874.00 |
| Inginiyagala | 11.25 | 11.25 | 2.90 | 55.00 |
| Udawalawe | 6.00 | 4.00 | 2.00 | 40.00 |
| Puttalam Coal I | 275.00 | 270.00 | 270.00 | 6,224.00 |
| Puttalam Coal II | 275.00 | 270.00 | 268.00 | 6,093.00 |
| Puttalam Coal III | 275.00 | - | - | - |
| KPS Small GTs | 65.20 | 36.00 | - | - |
| KPS GT 7 | 113.00 | 115.00 | - | - |
| KCCP | 161.00 | 150.00 | - | - |
| Sapugaskanda A | 69.60 | 48.00 | - | - |
| Sapugaskanda B | 69.60 | 54.00 | - | - |
| Uthura Janani | 26.01 | 16.00 | 15.50 | 80.00 |
| Barge CEB | 60.00 | 60.00 | - | 293.00 |
| CEB-Thulhiriya | 10.00 | 8.00 | - | - |
| CEB-Kolonnawa | 20.00 | 15.20 | - | - |
| CEB-Mathugama | 20.00 | 15.80 | - | - |
| AES - Kelanitissa | 163.00 | 163.00 | - | - |
| Westcoast | 270.00 | 270.00 | - | - |
| Vpower-Valach. | 24.00 | 24.00 | - | - |
| Solar | 58.00 | | - | 232.00 |
| Wind | 128.00 | | 163.10 | 5,029.00 |
| MH and BM | 394.00 | | 137.70 | Not available |
| Total without NCRE | 3,538.46 | 2,873.45 | | |

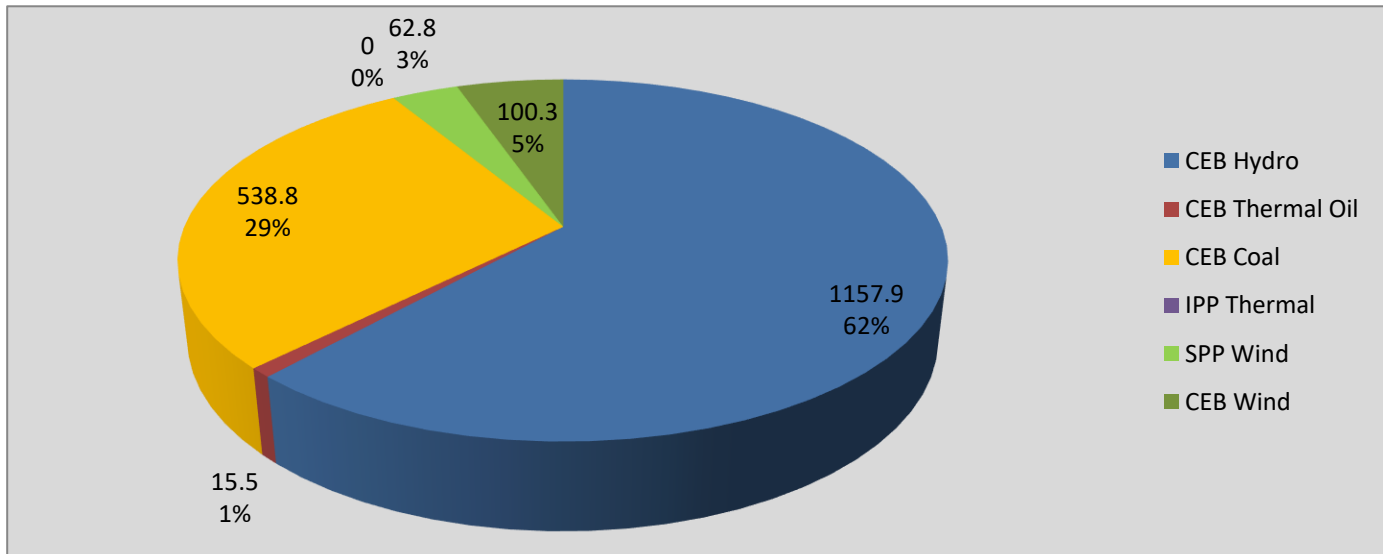
Night peak load of MH and BM only include loading of Minihydro plants of total capacity MW 199

Installed capacity of Solar, wind, Mini-hydro and Biomass plants are as of end of December 2019

Plant availability is the availability recorded at 6 am on August 30, 2021

Contribution to the Night Peak in MW

August 29, 2021

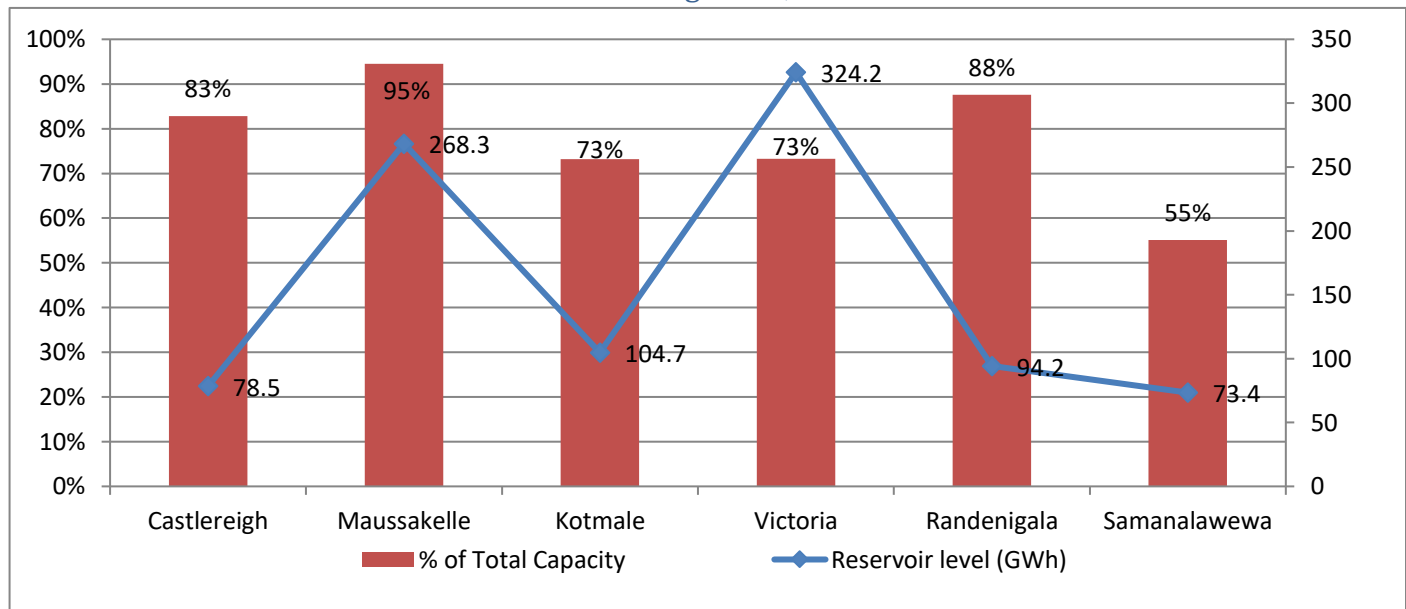


| | |
|----------------|------------|
| Night Peak* | 1,875.3 MW |
| Day Peak | 1,346.1 MW |
| Minimum Demand | 1,120.8 MW |

Notes: *The above chart pattern and night peak figure is presented excluding the contribution of Moragahakanda, other minihydro and biomass power plants
 **Day peak and Minimum demand includes the contribution from Moragahakanda, wind and solar plants

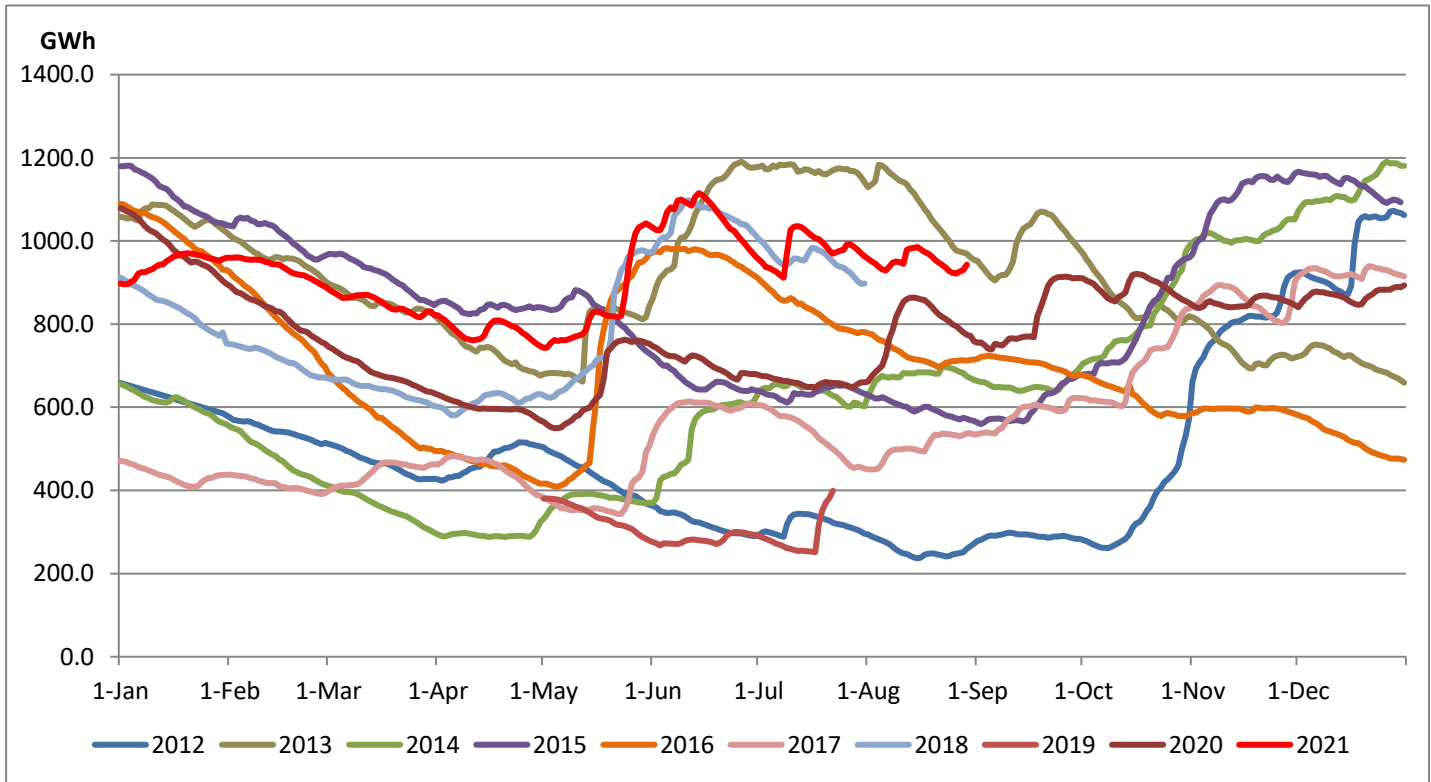
* in addition to the night peak figure presented above, Kerawalapitiya waste heat plant, other MiniHydro and Biomass Plants of installed capacity 199.00 MW has recorded total 137.70 MW at night peak

Reservoir Levels - as at 06.00 Hr on August 30, 2021



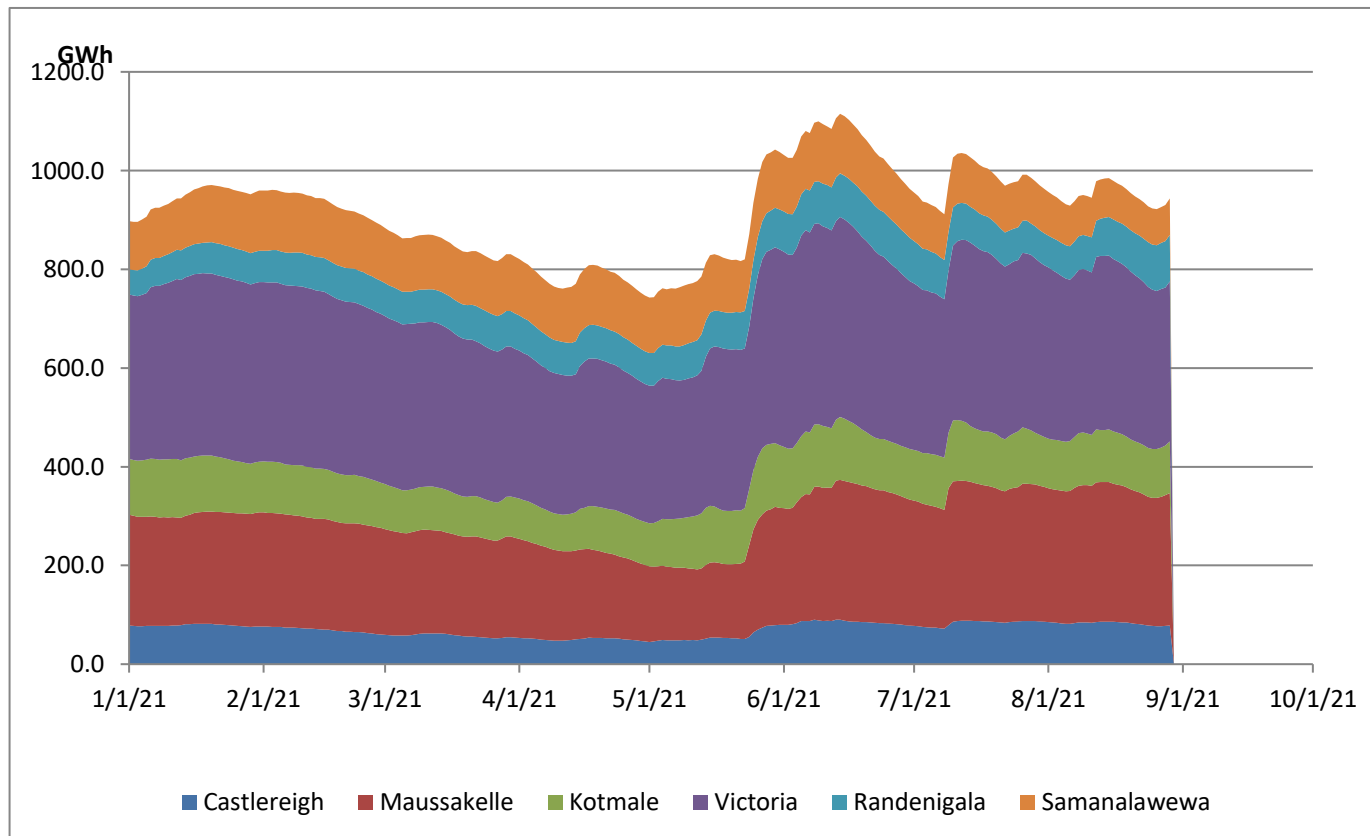
| | |
|----------------------------|-------|
| Total Reservoir Level(GWh) | 943.3 |
| % of Total capacity | 78.3% |

Comparison of Total Reservoir Storage Levels with Past Years

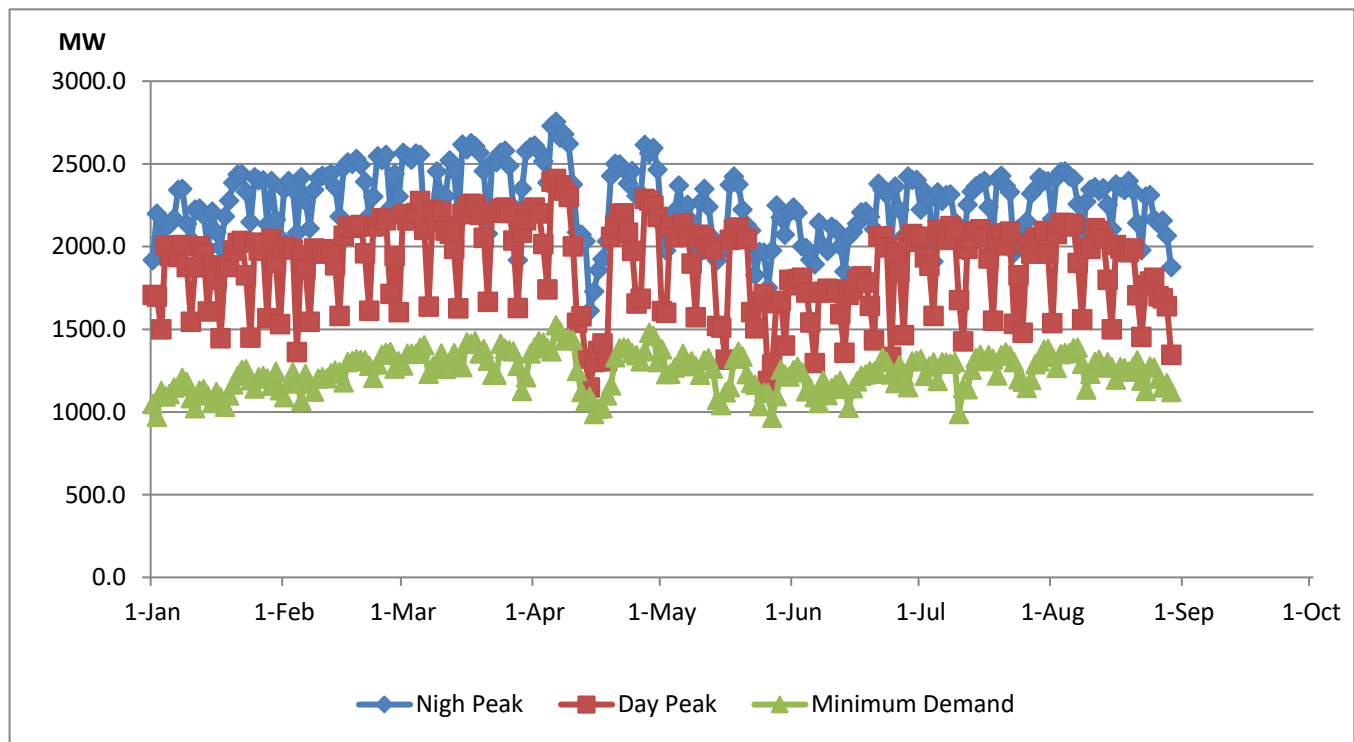


Data for 2018 and 2019 are only available for part of year.

Variation of Major Hydro Reservoir Levels in the current year (GWh)



Variation of Demand during the current year



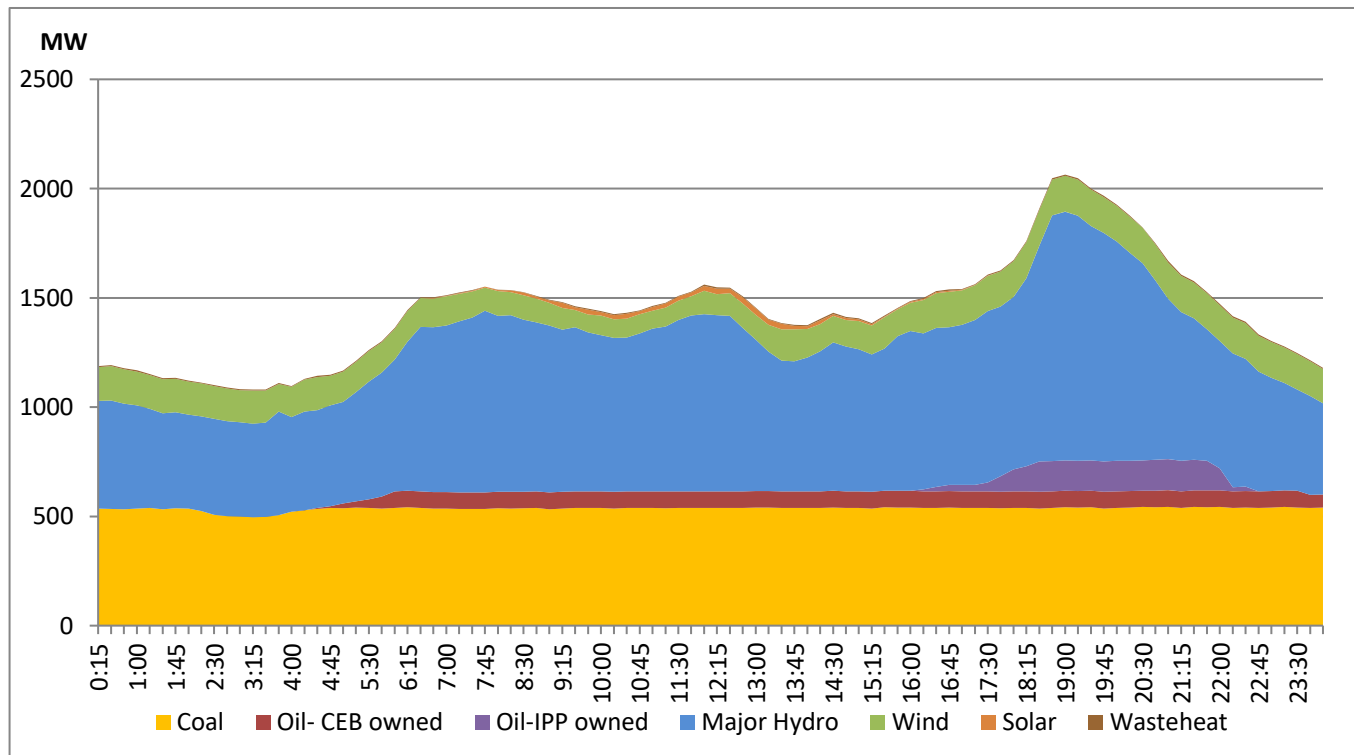
Notes:

The night peak is excluding the contribution from Minihydro and biomass power plants
 Day peak and minimum demand graphs includes the contribution from Moragahakanda power plant
 All graphs include the contribution from telemetered solar and wind plants

Daily Load Curve of the Previous day

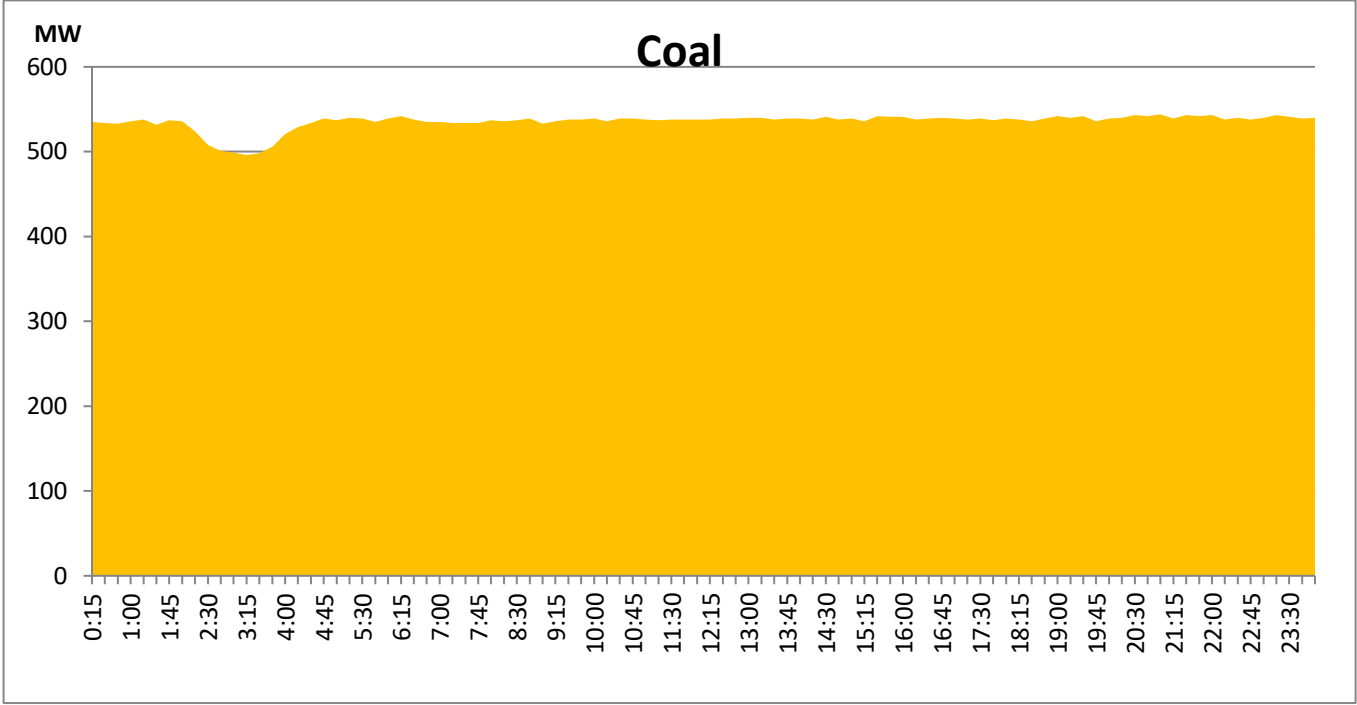
August 28, 2021

Solar and wind data is based on Telemetered Power Stations only



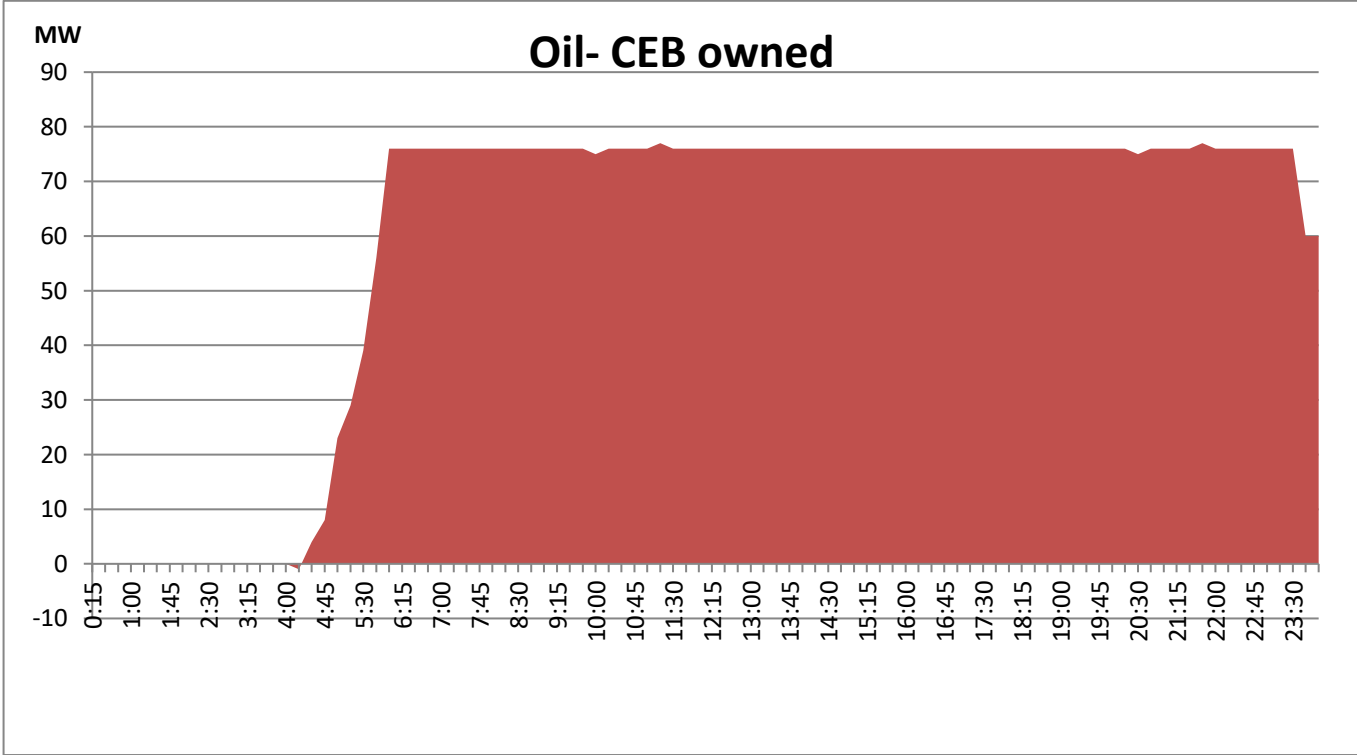
Coal Generation during the Previous day

August 28, 2021



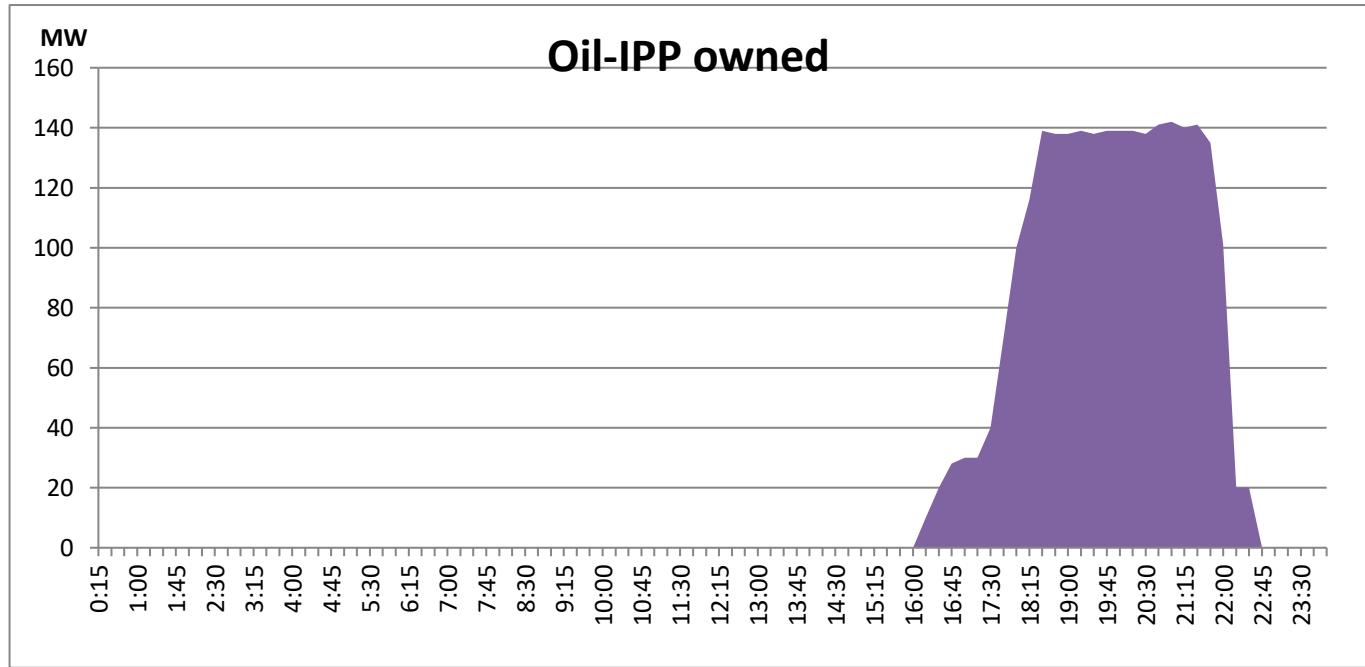
CEB Oil Plant Generation during the Previous day

August 28, 2021



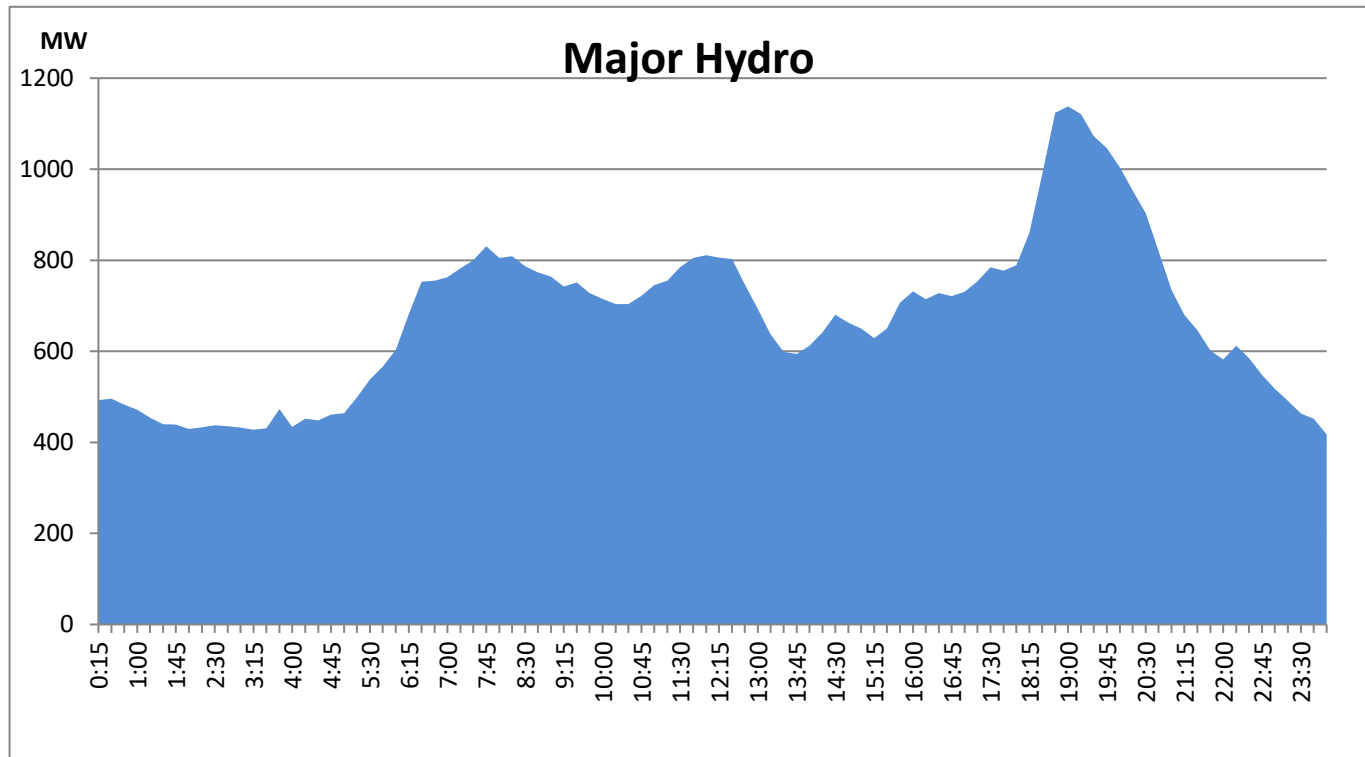
IPP Oil Plant Generation during the Previous day

August 28, 2021



Major Hydro Generation during the Previous day

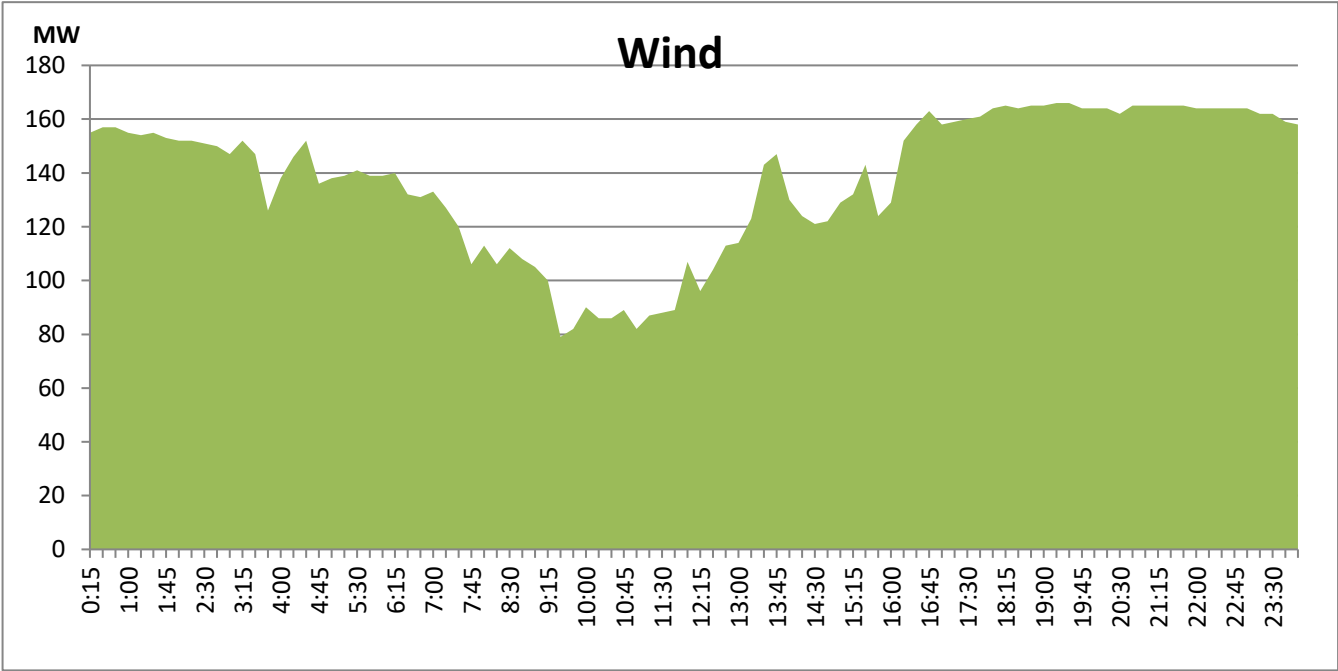
August 28, 2021



Wind Generation during the Previous day

August 28, 2021

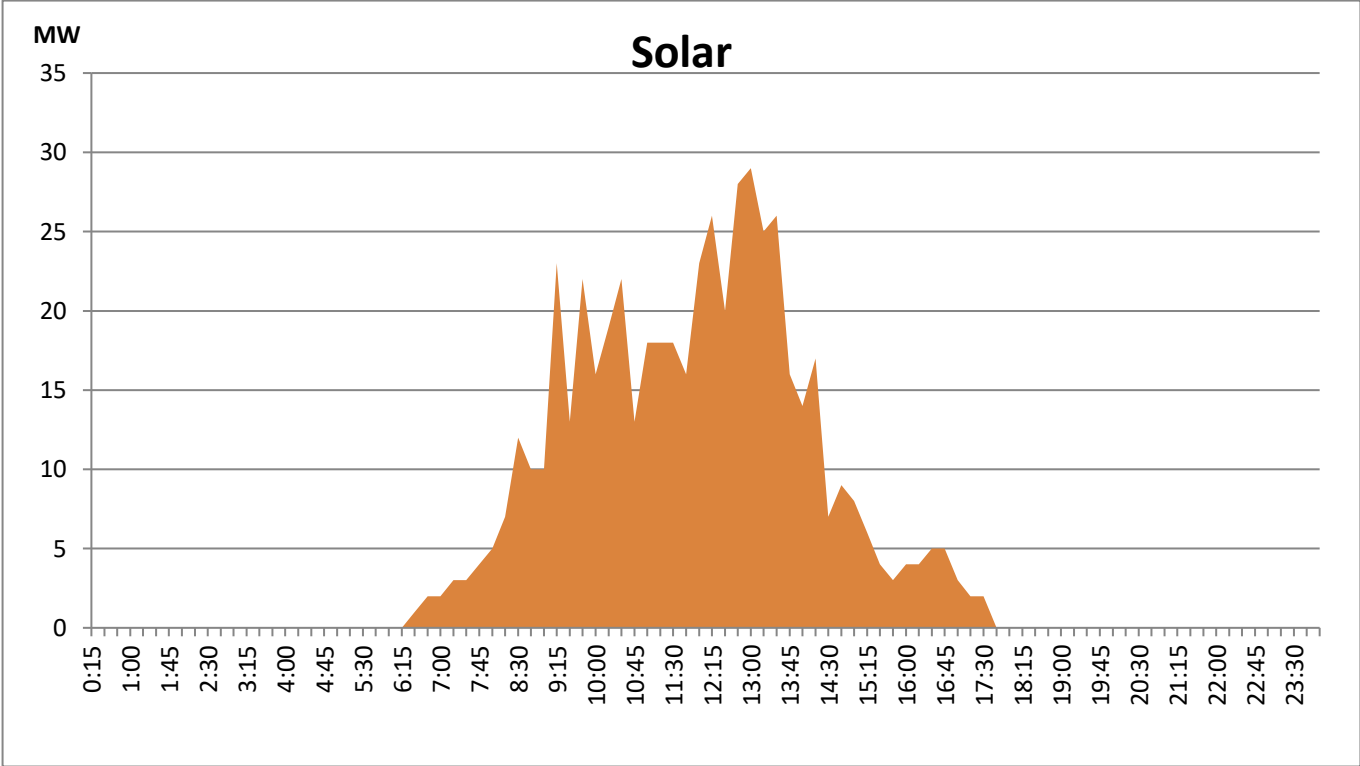
Based on Telemetered Power Stations only



Solar Generation during the Previous day

August 28, 2021

Based on Telemetered Power Stations only



Thermal Plant Fuel types

| Power Station | Primary Fuel |
|--------------------------------|-----------------|
| CEB Thermal | |
| Sapugaskanda 1 | Heavy Fuel |
| Sapugaskanda 2 | Heavy Fuel |
| Kelanitissa Small Gas Turbines | Auto Diesel |
| GT 7 - Kelanitissa | Auto Diesel |
| Kelanitissa CCY | Naptha & Diesel |
| Lakvijaya 1 | Coal |
| Lakvijaya 2 | Coal |
| Lakvijaya 3 | Coal |
| Uthuru Janani | Heavy Fuel |
| Barge CEB | Furnace Oil |
| | |

| Power Station | Primary Fuel |
|-----------------|-------------------------|
| Private Thermal | |
| Sojitz - | Auto Diesel |
| West Coast | Low Sulphur Furnace oil |
| | |
| | |

Major Incidents during the day -as reported by CEB morning of

August 30, 2021

1) Kukule spilling started at 06:30hrs and continues to the present hour.

2) Norton Pond spilling started at 19:40hrs and stopped at 20:46hrs.

3) N'Lax gen 01 could not be started for night peak following routine maintenance due to a fault in MIV . N'Lax Gen 01 resumed generation at 21:31hrs.