

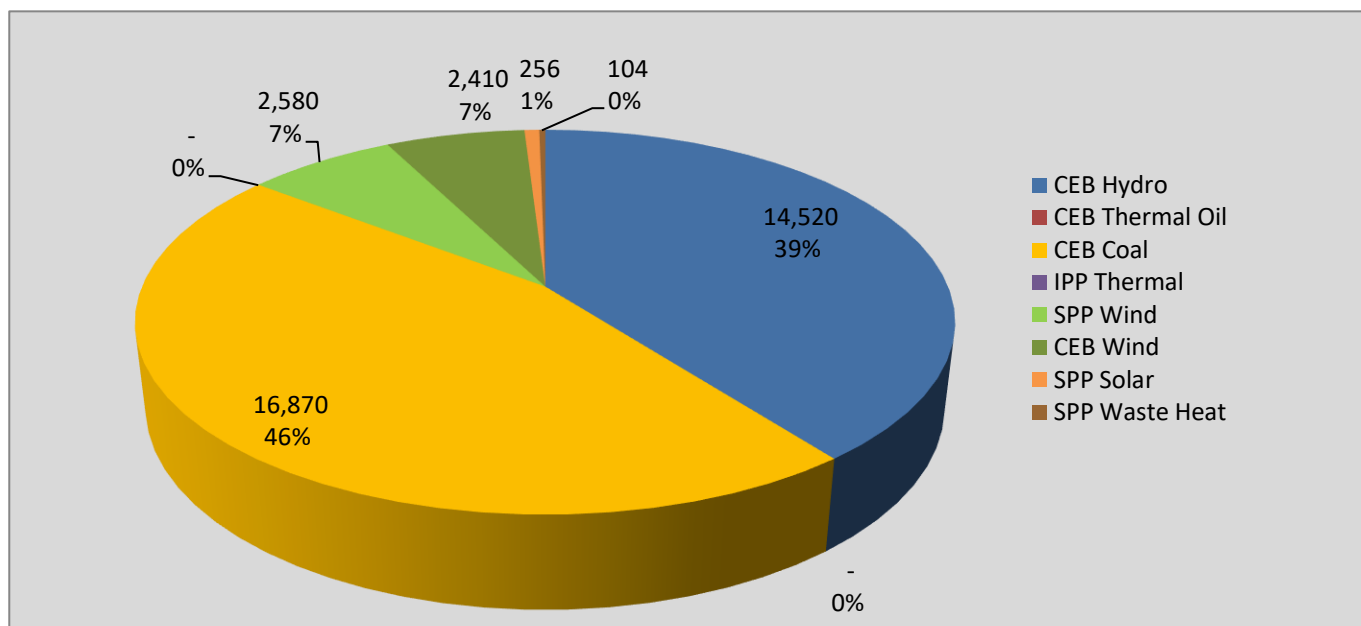
Generation and Reservoirs Statistics

August 27, 2021



PUBLIC UTILITIES COMMISSION OF SRI LANKA

Daily Generation Mix in MWh



Total Generation 36,740 MWh

Note: Minihydro and Biomass and waste heat (except 10 MW WH plant at Kerawalapitiya) power plant energy is not included

Cumulative Dispatch

Note: Minihydro and Biomass and waste heat (except 10 MW WH plant at Kerawalapitiya) power plant energy is not included

For Current Month

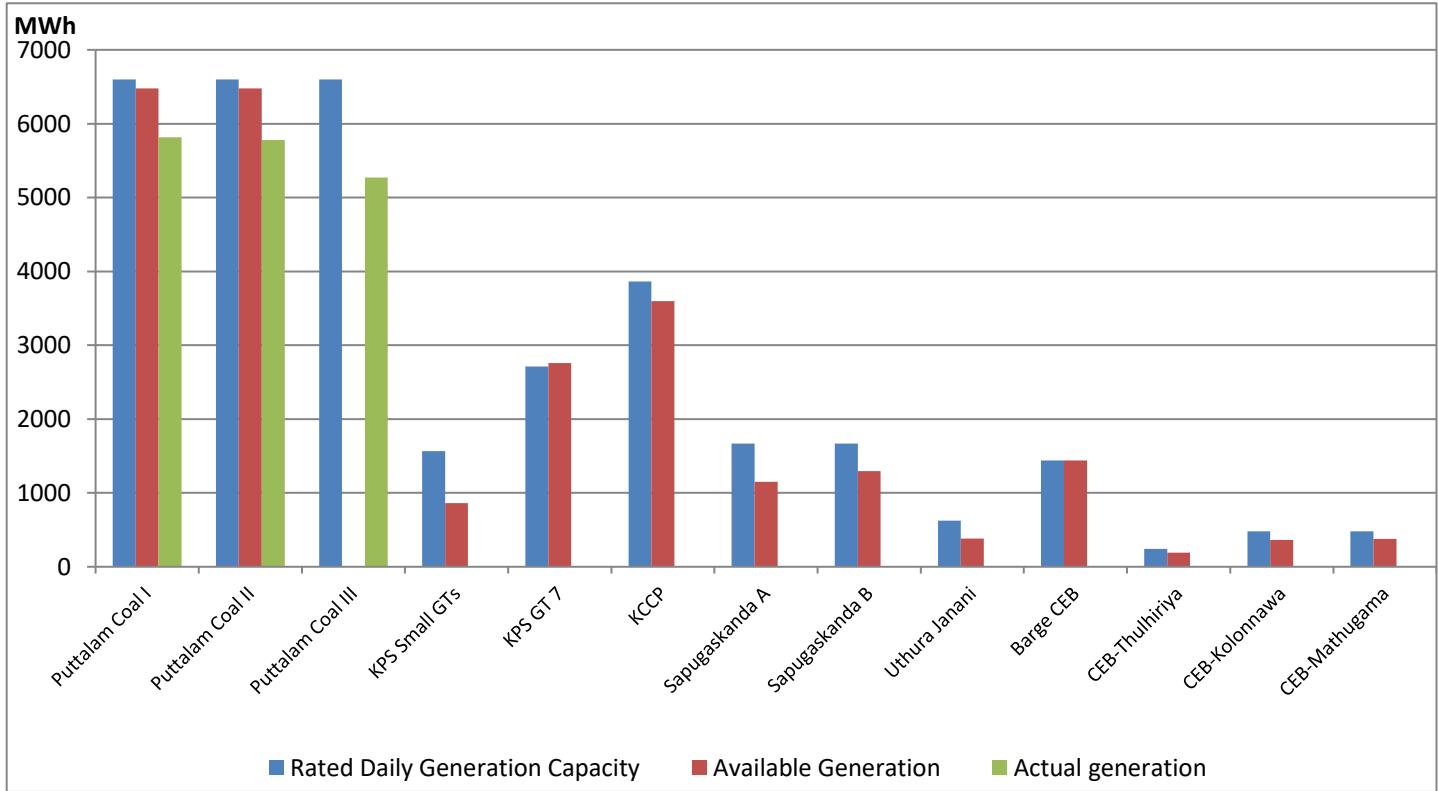
Category	Dispatch (GWh)	Percentage
CEB Hydro	424.2	38.59%
CEB Thermal Oil	62.2	5.66%
CEB Coal	507.5	46.18%
IPP Thermal	20.9	1.91%
SPP Wind	25.4	2.31%
CEB Wind	45.4	4.13%
SPP Solar	7.3	0.67%
SPP Waste Heat	6.2	0.56%
Total	1,099.1	

For Current Year

Category	Dispatch (GWh)	Percentage
CEB Hydro	3,159.8	32.85%
CEB Thermal Oil	892.0	9.27%
CEB Coal	3,975.9	41.34%
IPP Thermal	1,180.2	12.27%
SPP Wind	130.1	1.35%
CEB Wind	194.9	2.03%
SPP Solar	64.2	0.67%
SPP Waste Heat	20.9	0.22%
Total	9,617.6	

CEB owned Thermal Plant Dispatch

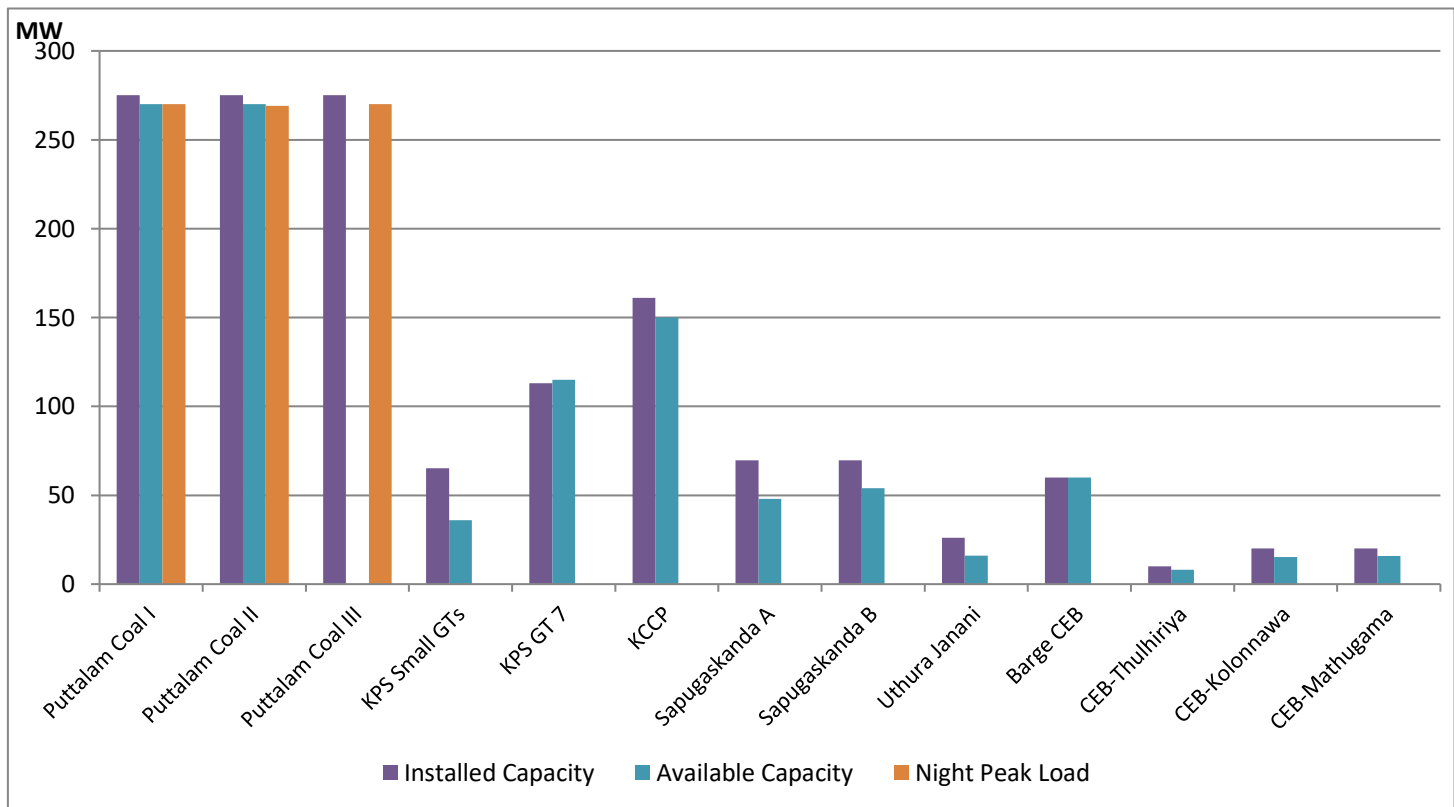
August 27, 2021



Available Generation is estimated based on plant availability at 6.00am on

August 28, 2021

CEB owned Thermal Plant Loading at the Night Peak



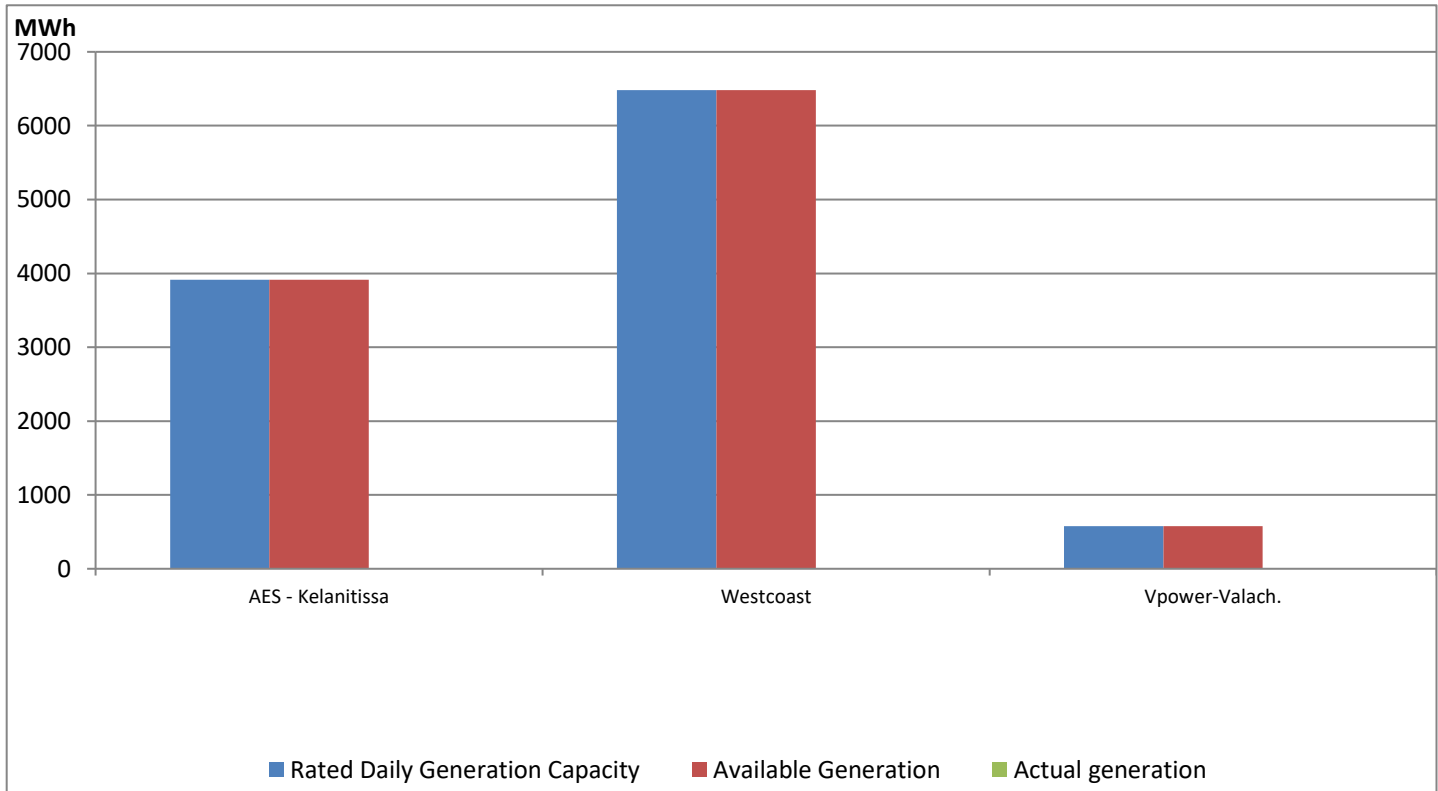
Note- Plant availability is recorded at 6.00 am on

August 28, 2021

IPP owned Thermal Plant Dispatch

August 27, 2021

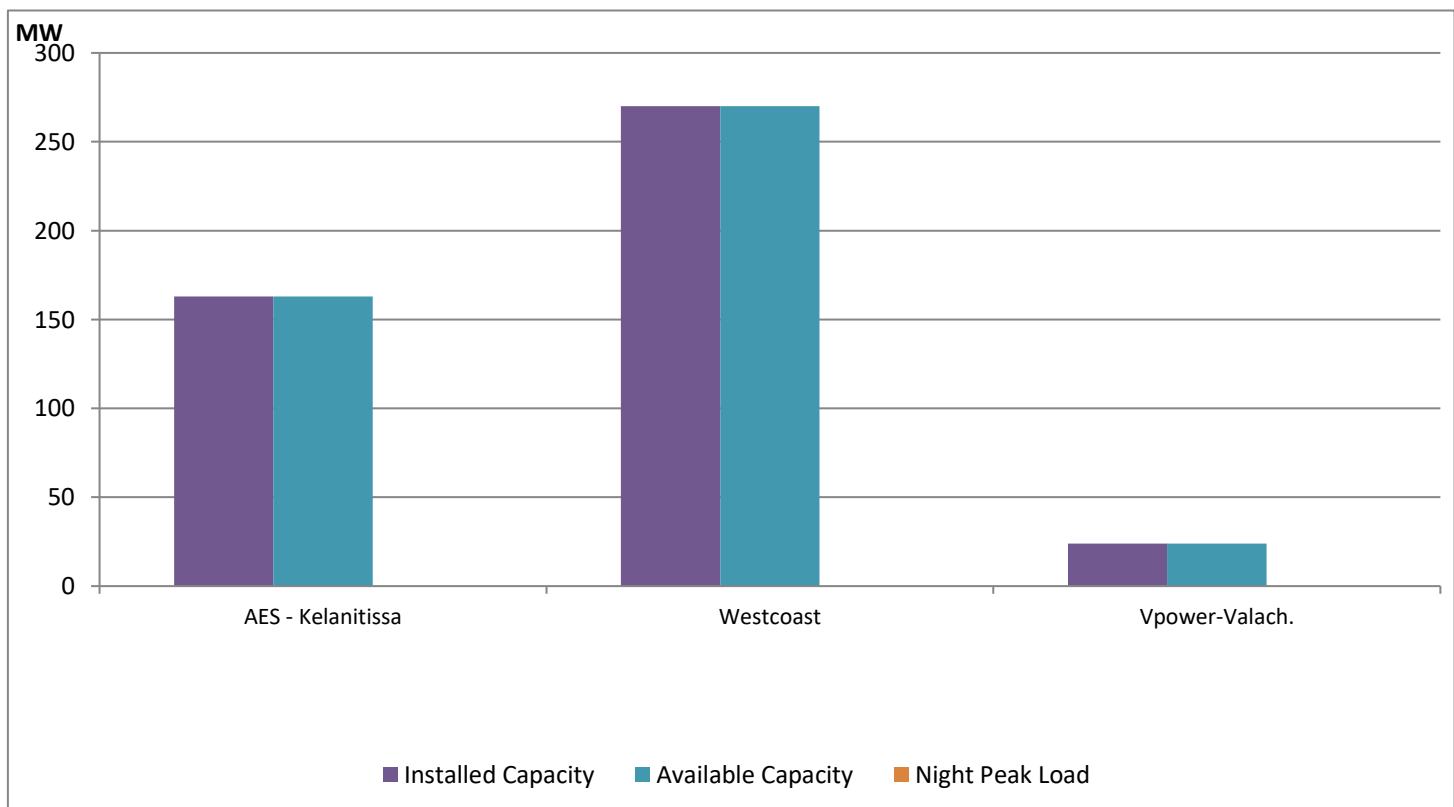
ACE Embilipitiya, ACE Matara, Asia Power, V Power Pallekale, Vpower Galle, V Power Horana, Vpower Hambantota and Altaqa Mahiyanganaya are not available due to expiration of PPAs



Available Generation is estimated based on plant availability at 6.00am on

August 28, 2021

IPP owned Thermal Plant Loading at the Night Peak

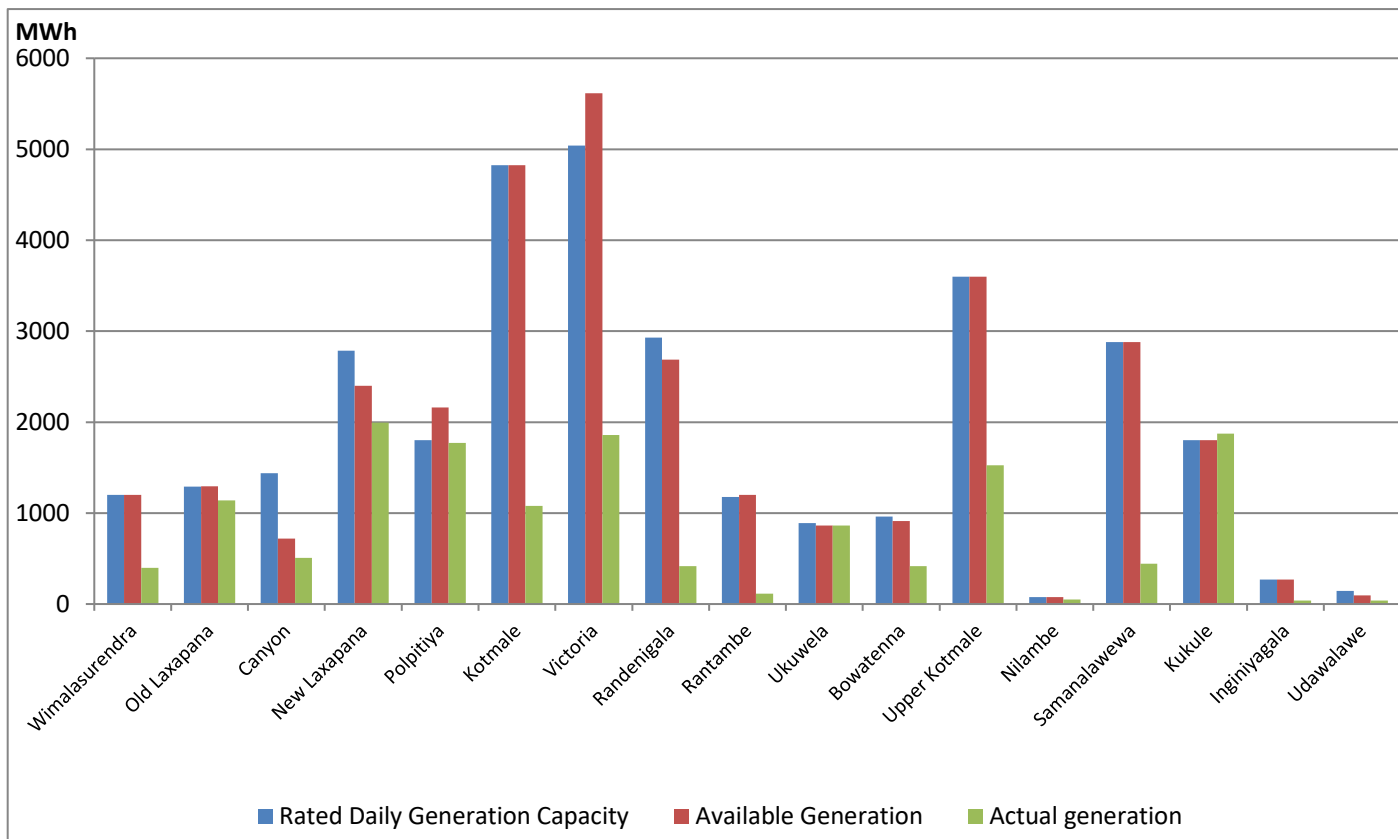


Note- Plant availability is recorded at 6.00 am on

August 28, 2021

Major Hydro Plant Dispatch

August 27, 2021

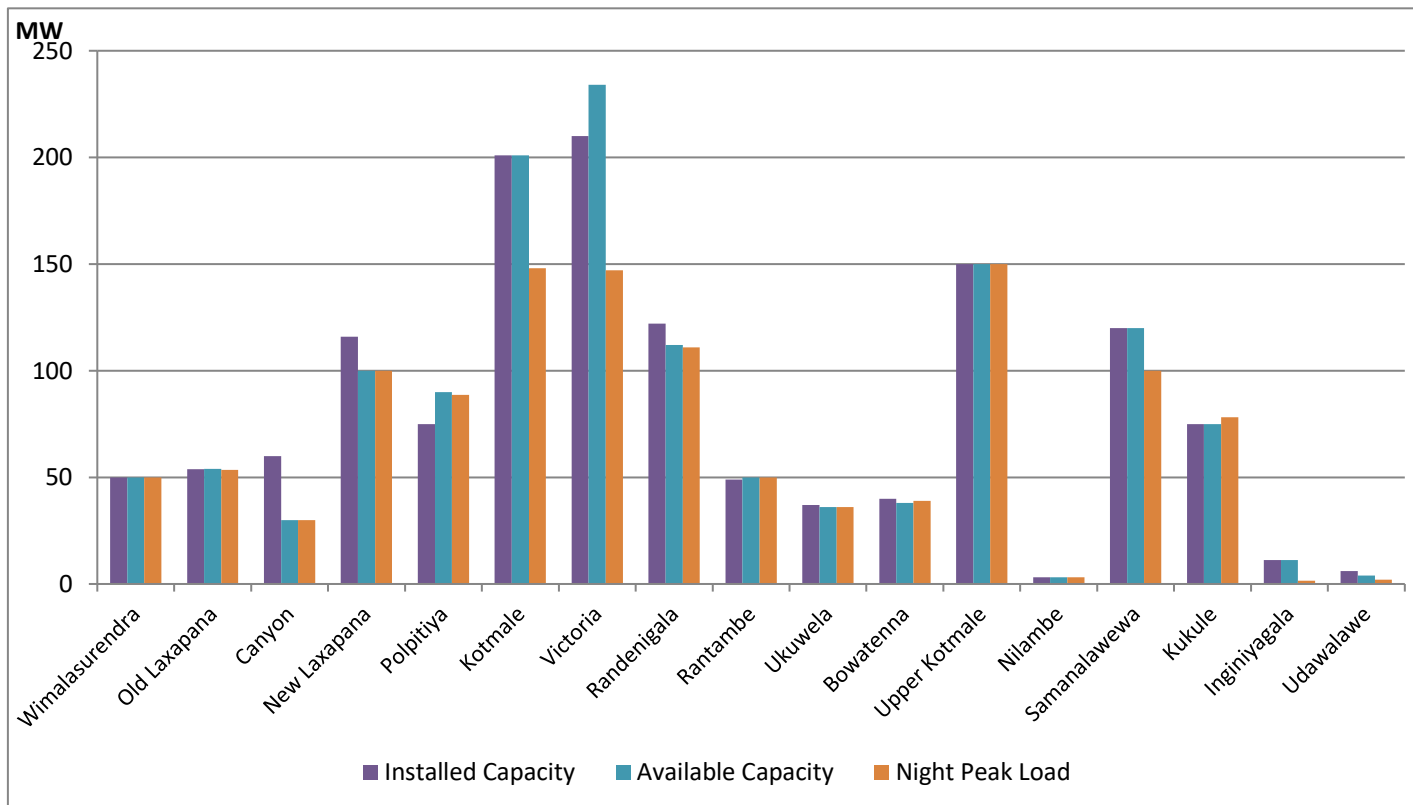


Note- Available Generation is estimated based on plant availability at 6.00am on

August 28, 2021

Major Hydro Plant Loading at Night Peak

August 27, 2021



Note- Plant availability is recorded at 6.00 am on

August 28, 2021

Summary of Major Plant performance

Plant	Installed Capacity (MW)	Plant Availability (MW)	Night peak Load (MW)	Plant Dispatch (GWh)
Wimalasurendra	50.00	50.00	50.00	396.00
Old Laxapana	53.80	54.00	53.50	1,140.00
Canyon	60.00	30.00	30.00	506.00
New Laxapana	116.00	100.00	100.00	1,996.00
Polpitiya	75.00	90.00	88.70	1,773.00
Kotmale	201.00	201.00	148.00	1,080.00
Victoria	210.00	234.00	147.00	1,857.00
Randenigala	122.00	112.00	111.00	415.00
Rantambe	49.00	50.00	50.00	113.00
Ukuwela	37.00	36.00	36.00	862.00
Bowatenna	40.00	38.00	39.00	418.00
Upper Kotmale	150.00	150.00	150.00	1,525.00
Nilambe	3.20	3.20	3.20	49.00
Samanalawewa	120.00	120.00	100.00	445.00
Kukule	75.00	75.00	78.10	1,873.00
Inginiyagala	11.25	11.25	1.50	38.00
Udawalawe	6.00	4.00	2.00	38.00
Puttalam Coal I	275.00	270.00	270.00	5,818.00
Puttalam Coal II	275.00	270.00	269.00	5,780.00
Puttalam Coal III	275.00	-	270.00	5,272.00
KPS Small GTs	65.20	36.00	-	-
KPS GT 7	113.00	115.00	-	-
KCCP	161.00	150.00	-	-
Sapugaskanda A	69.60	48.00	-	-
Sapugaskanda B	69.60	54.00	-	-
Uthura Janani	26.01	16.00	-	-
Barge CEB	60.00	60.00	-	-
CEB-Thulhiriya	10.00	8.00	-	-
CEB-Kolonnawa	20.00	15.20	-	-
CEB-Mathugama	20.00	15.80	-	-
AES - Kelanitissa	163.00	163.00	-	-
Westcoast	270.00	270.00	-	-
Vpower-Valach.	24.00	24.00	-	-
Solar	58.00		-	255.00
Wind	128.00		161.00	4,983.00
MH and BM	394.00		106.70	Not available
Total without NCRE	3,538.46	2,873.45		

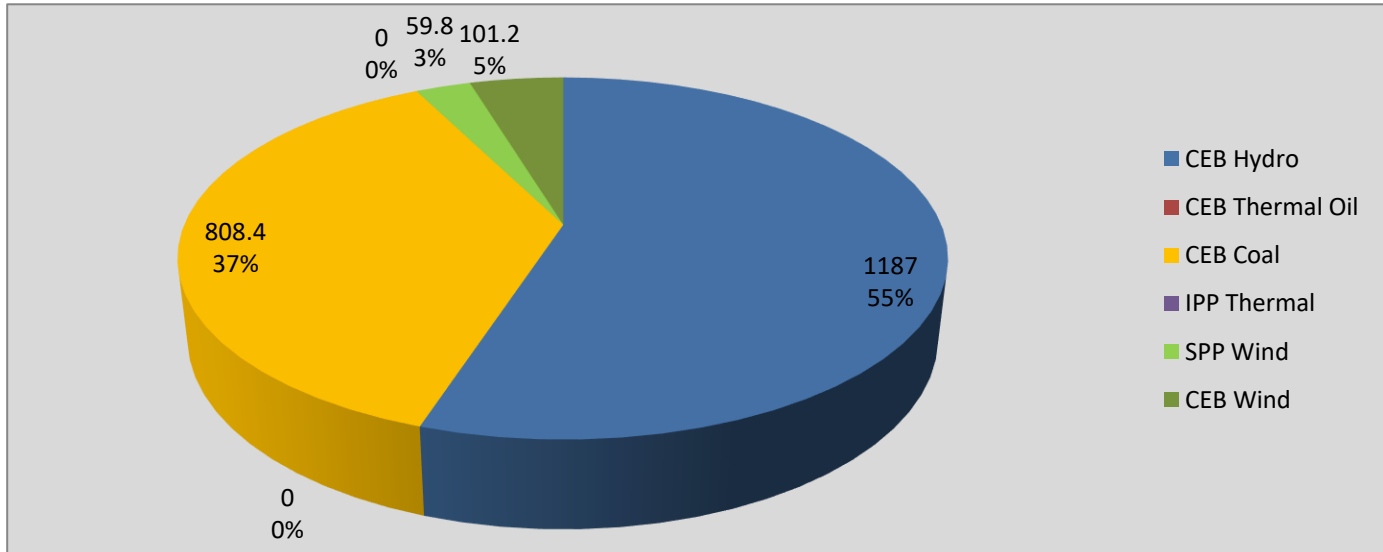
Night peak load of MH and BM only include loading of Minihydro plants of total capacity MW 198

Installed capacity of Solar, wind, Mini-hydro and Biomass plants are as of end of December 2019

Plant availability is the availability recorded at 6 am on August 28, 2021

Contribution to the Night Peak in MW

August 27, 2021



Night Peak*	2,156.3 MW
Day Peak	1,687.8 MW
Minimum Demand	1,148.3 MW

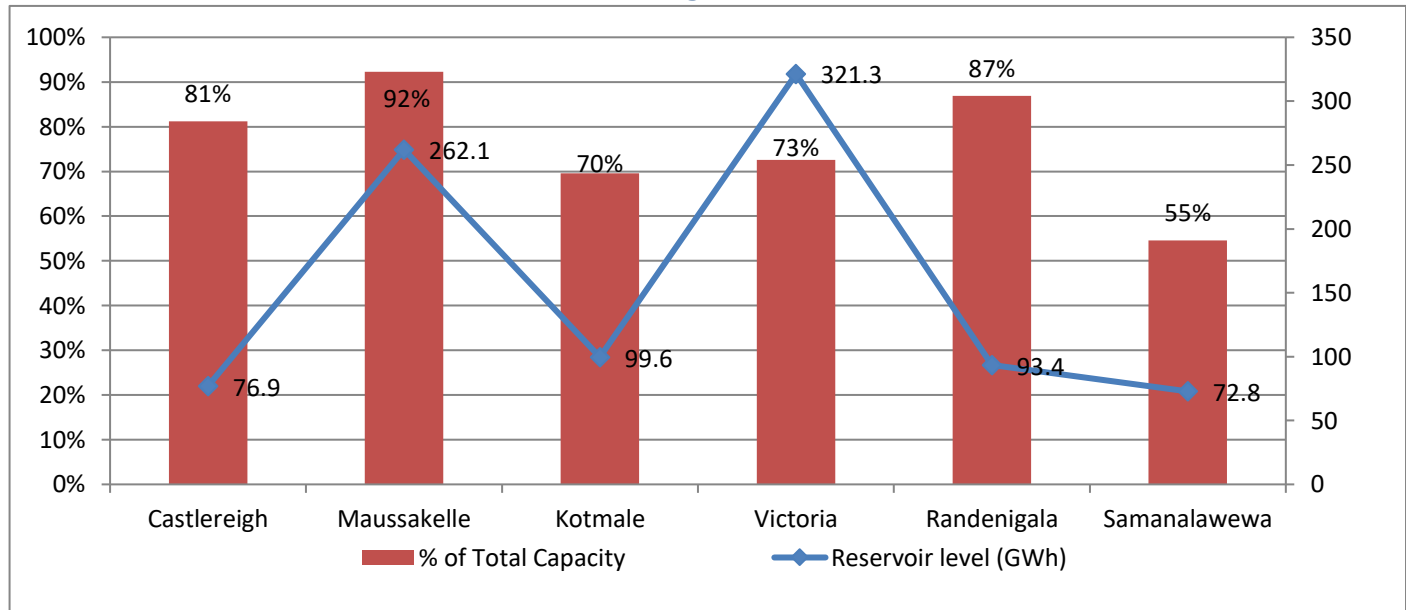
Notes:

*The above chart pattern and night peak figure is presented excluding the contribution of Moragahakanda, other minihydro and biomass power plants

**Day peak and Minimum demand includes the contribution from Moragahakanda, wind and solar plants

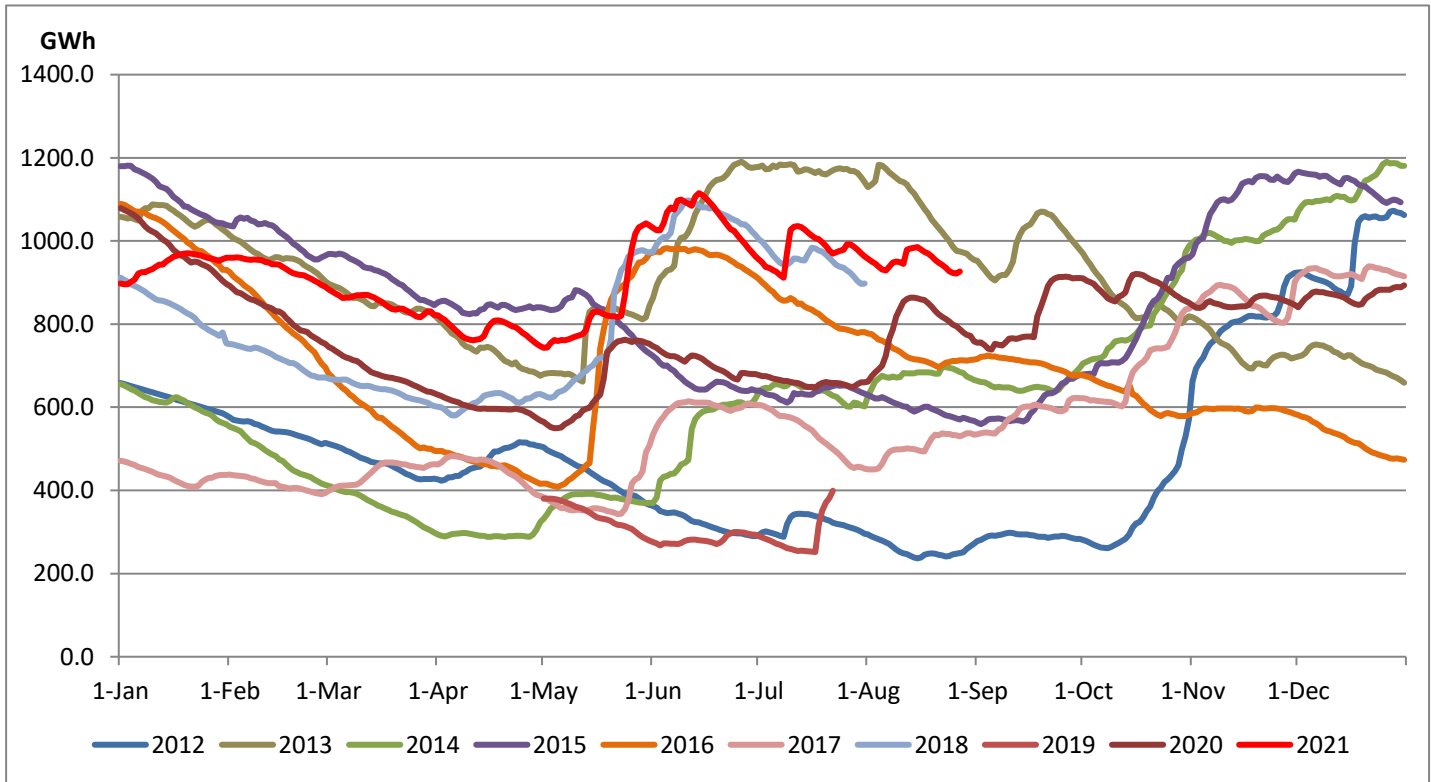
* in addition to the night peak figure presented above, Kerawalapitiya waste heat plant, other MiniHydro and Biomass Plants of installed capacity 198.00 MW has recorded total 106.70 MW at night peak

Reservoir Levels - as at 06.00 Hr on August 28, 2021



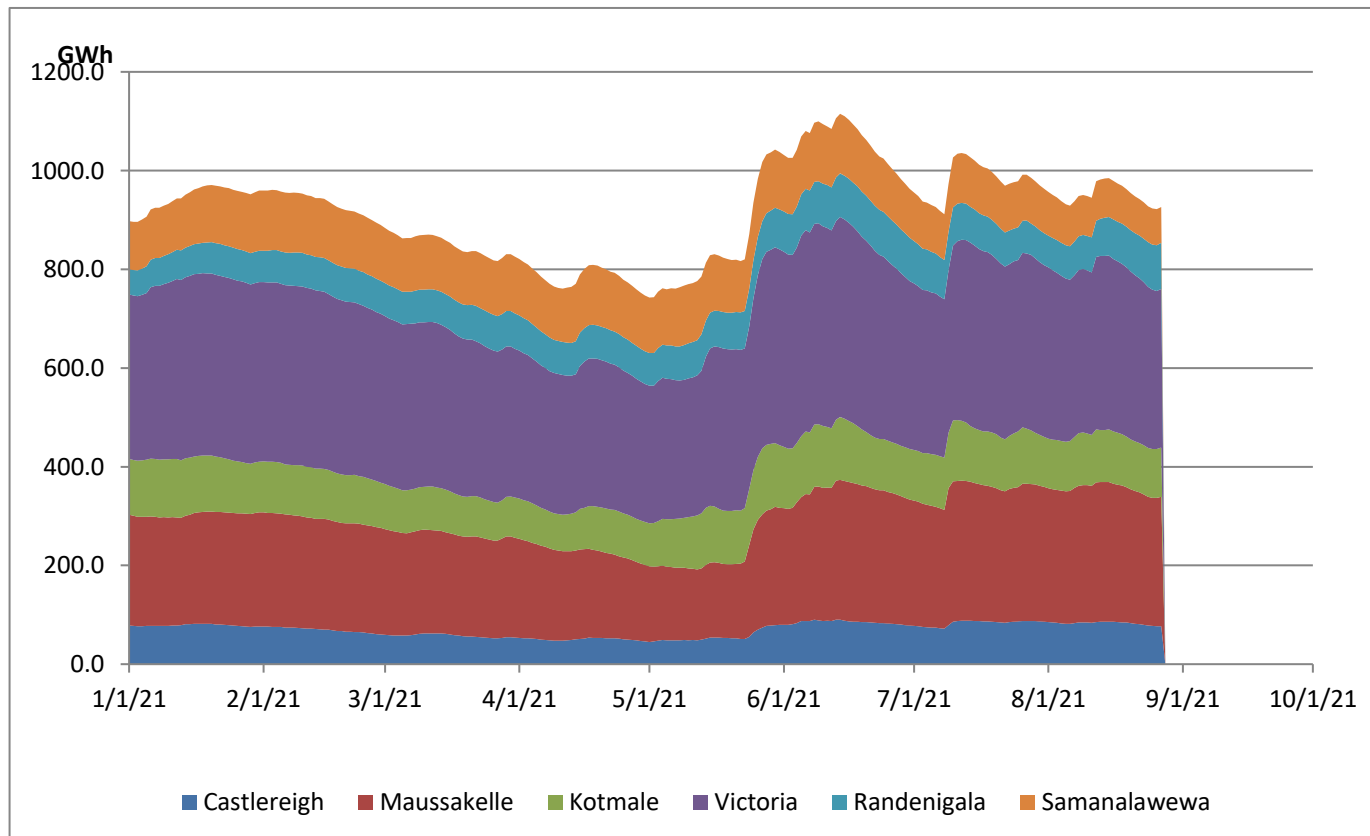
Total Reservoir Level(GWh)	926.1
% of Total capacity	76.8%

Comparison of Total Reservoir Storage Levels with Past Years

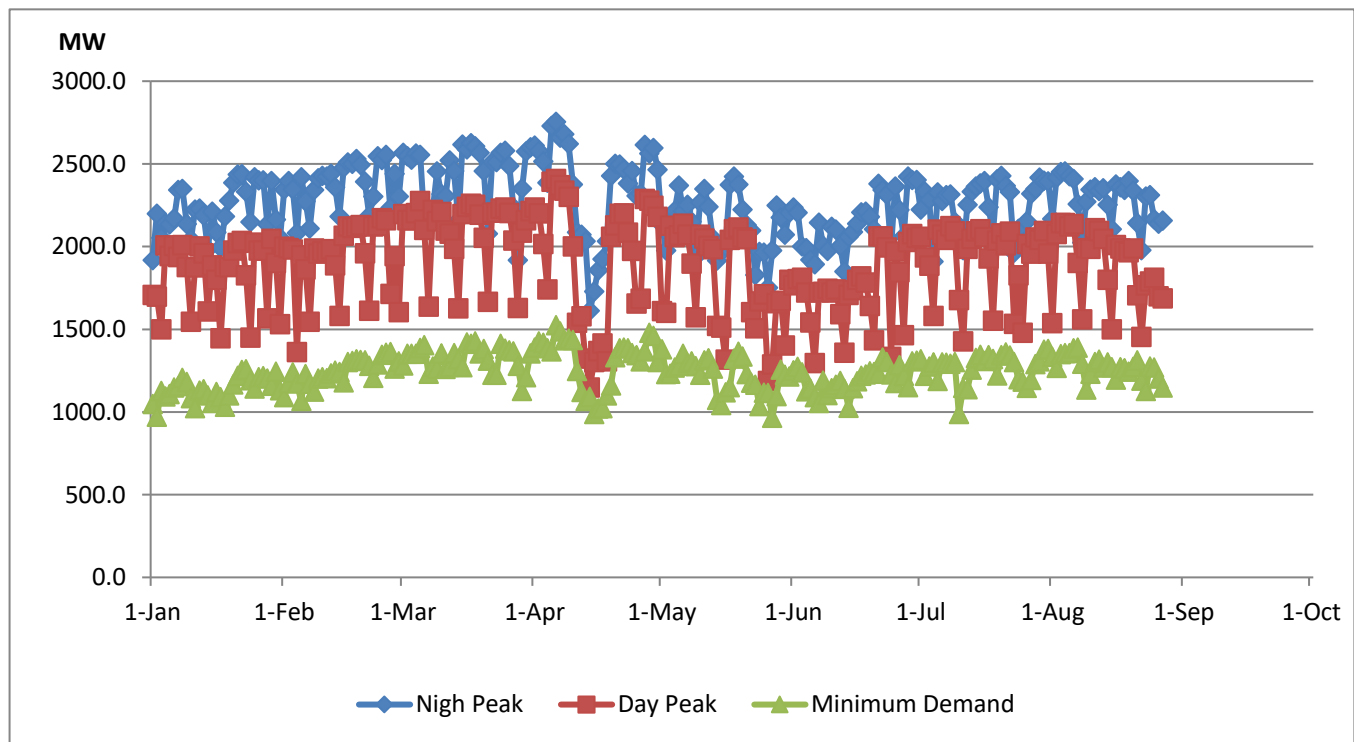


Data for 2018 and 2019 are only available for part of year.

Variation of Major Hydro Reservoir Levels in the current year (GWh)



Variation of Demand during the current year



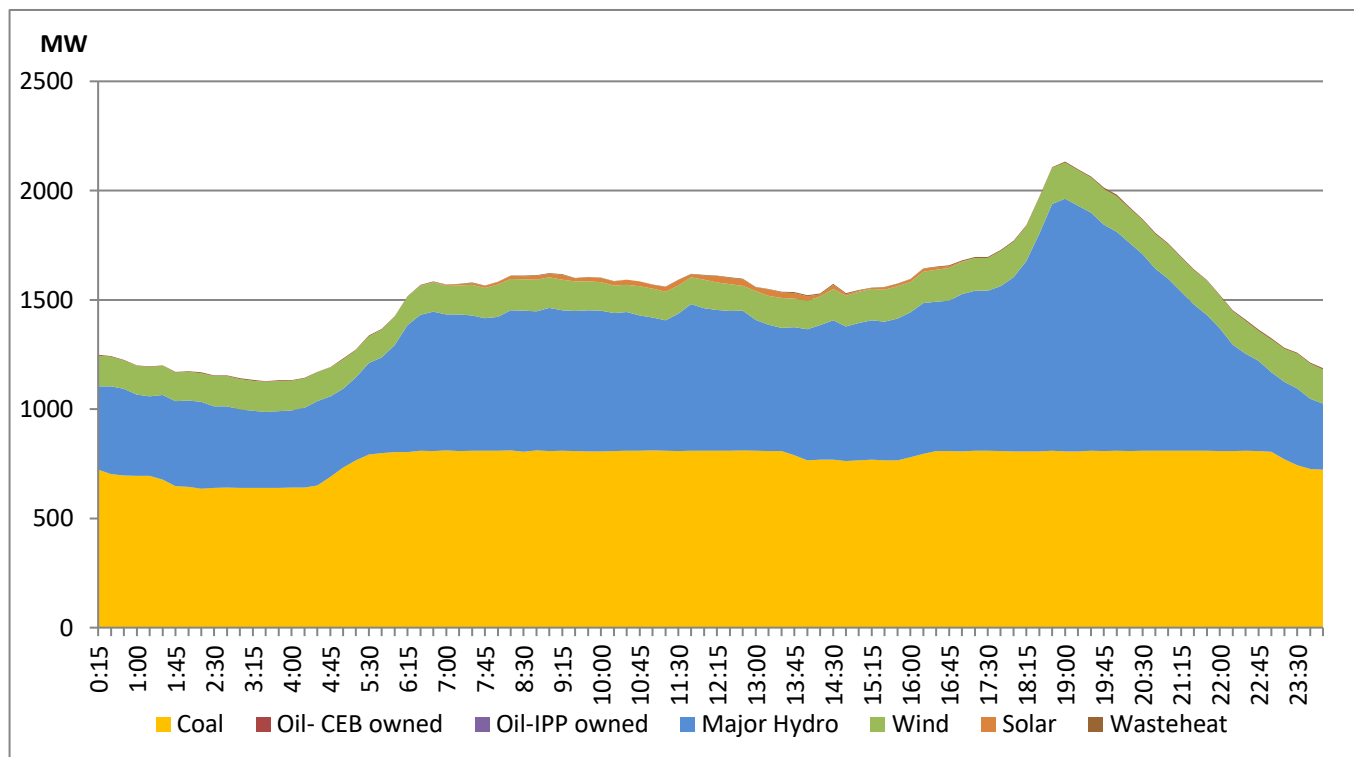
Notes:

The night peak is excluding the contribution from Minihydro and biomass power plants
 Day peak and minimum demand graphs includes the contribution from Moragahakanda power plant
 All graphs include the contribution from telemetered solar and wind plants

Daily Load Curve of the Previous day

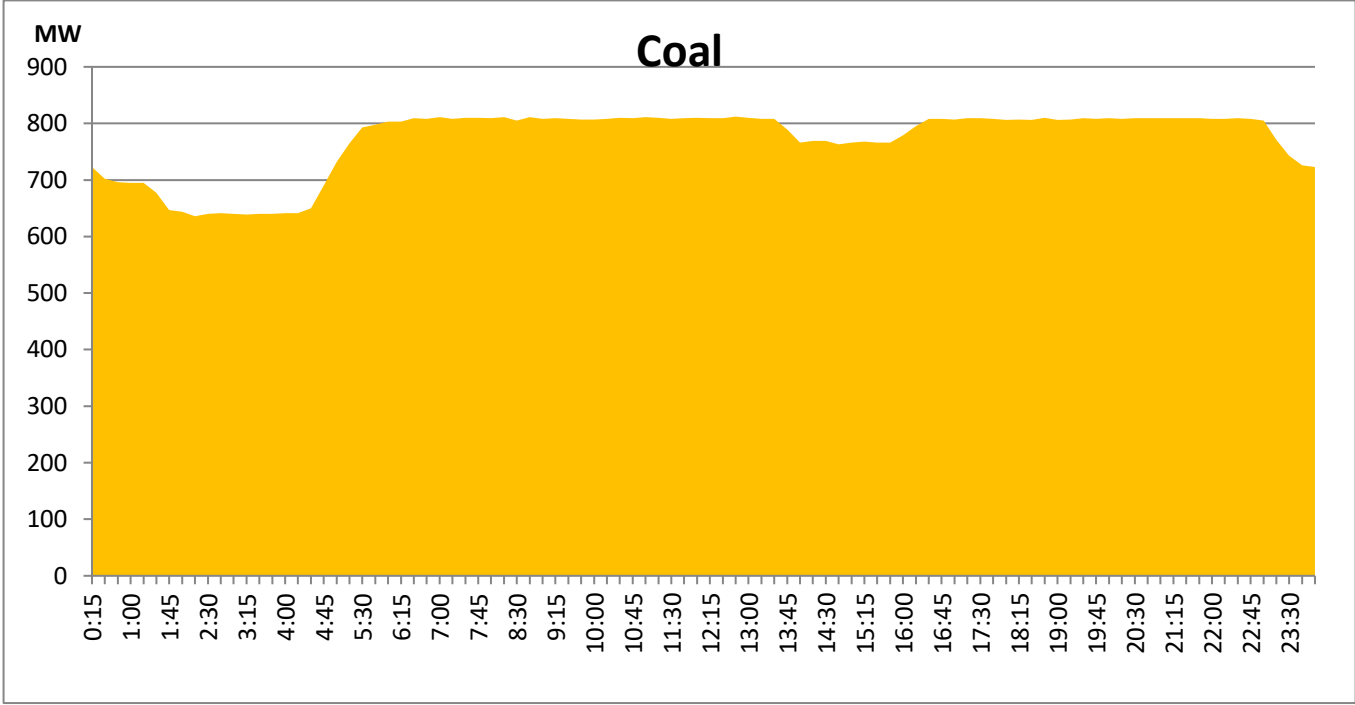
August 26, 2021

Solar and wind data is based on Telemetered Power Stations only



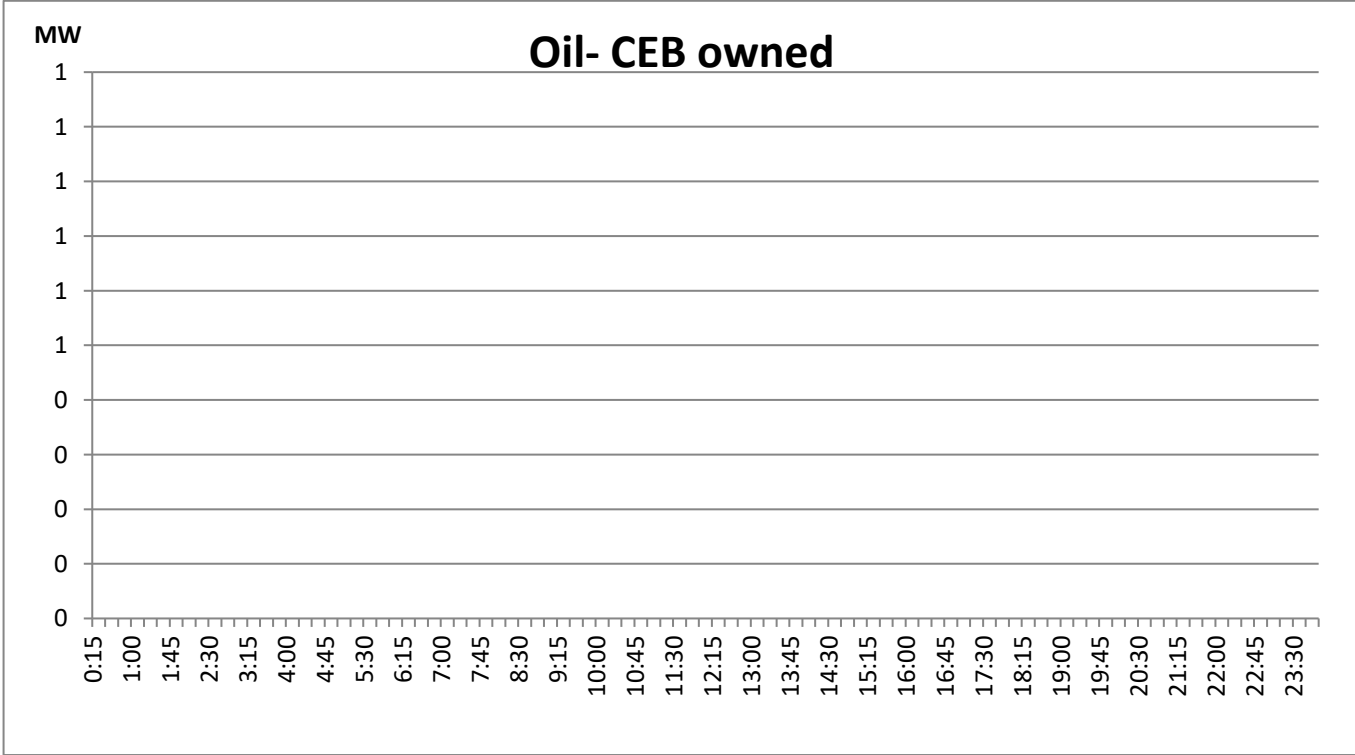
Coal Generation during the Previous day

August 26, 2021



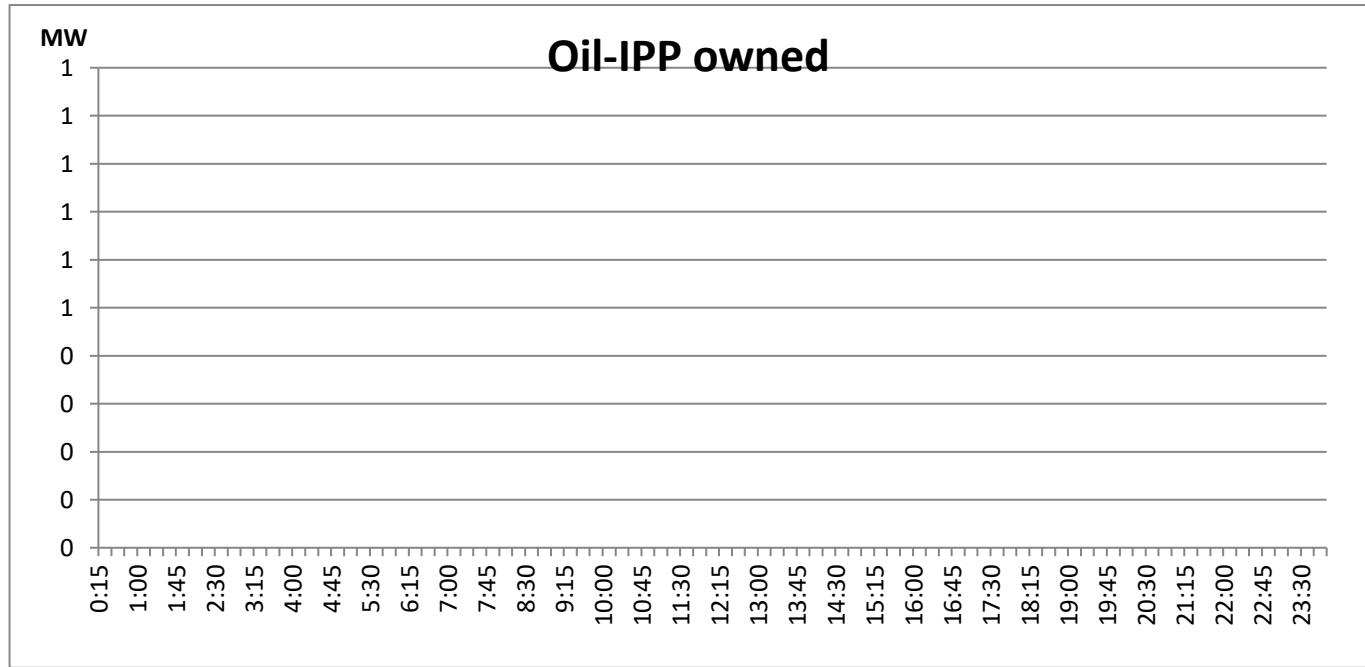
CEB Oil Plant Generation during the Previous day

August 26, 2021



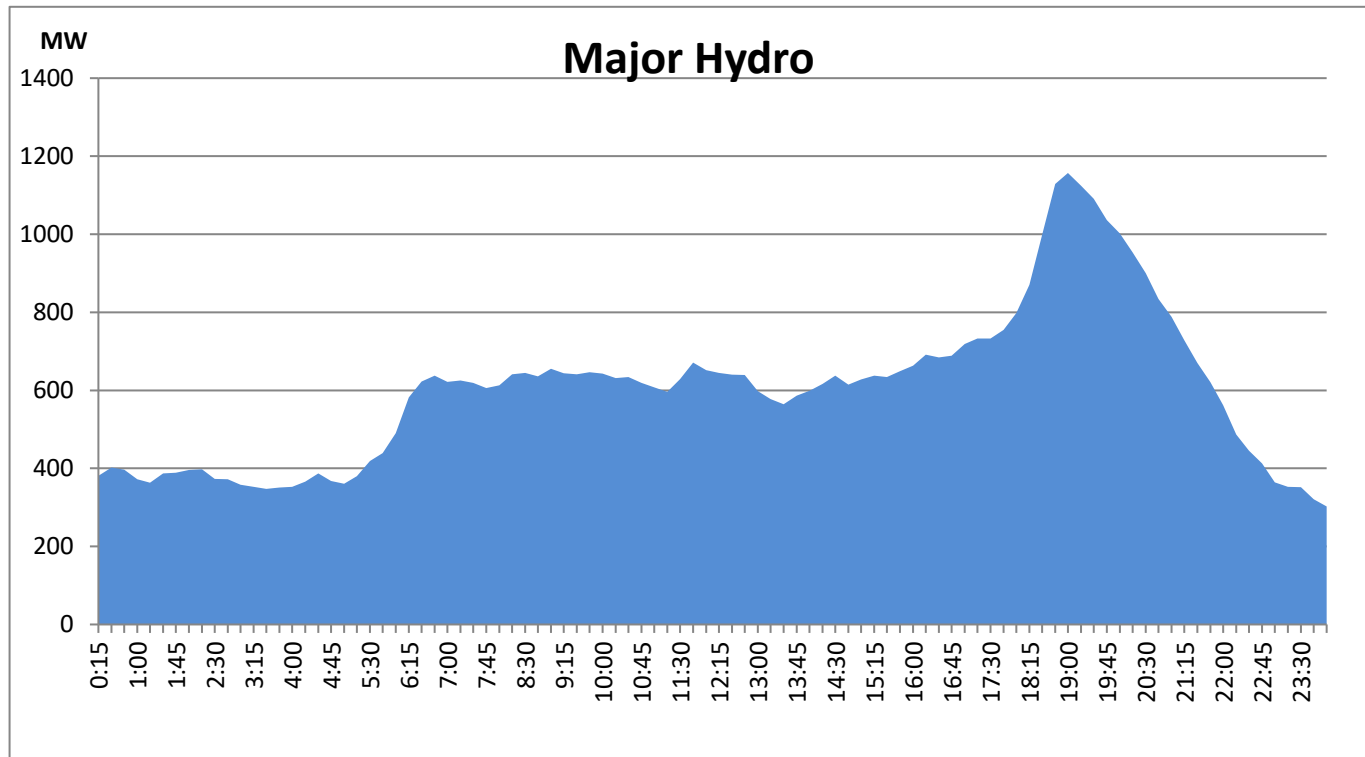
IPP Oil Plant Generation during the Previous day

August 26, 2021



Major Hydro Generation during the Previous day

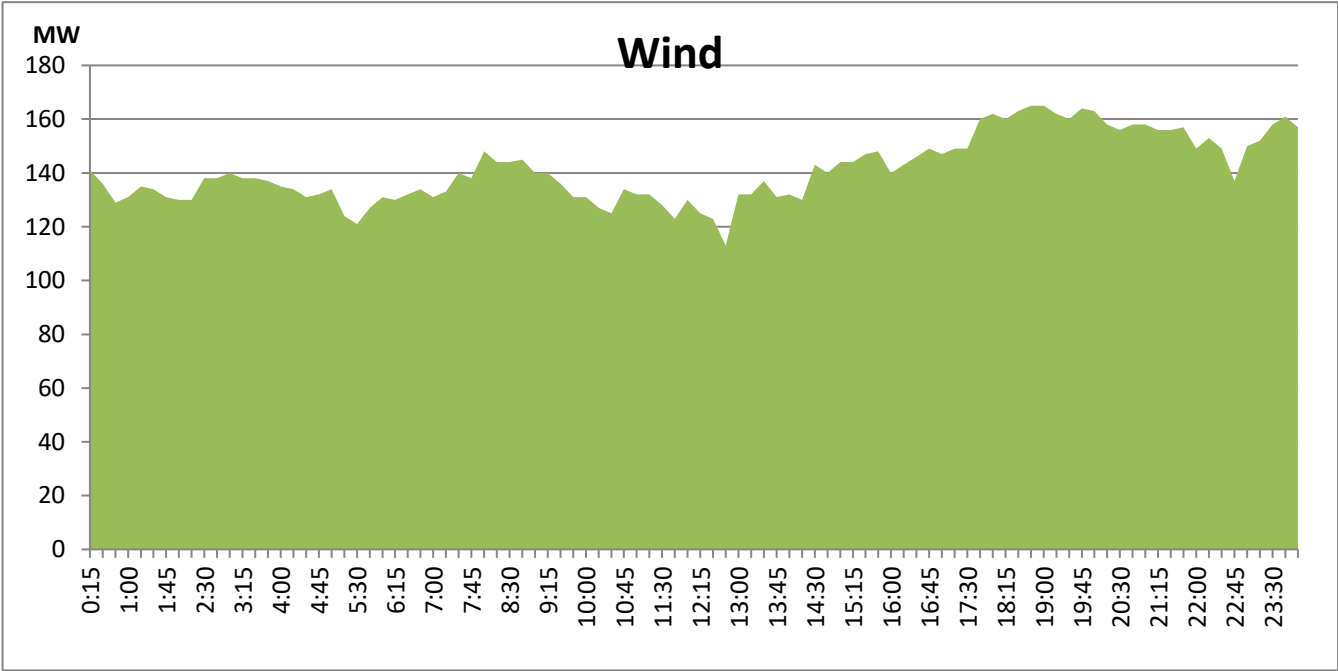
August 26, 2021



Wind Generation during the Previous day

August 26, 2021

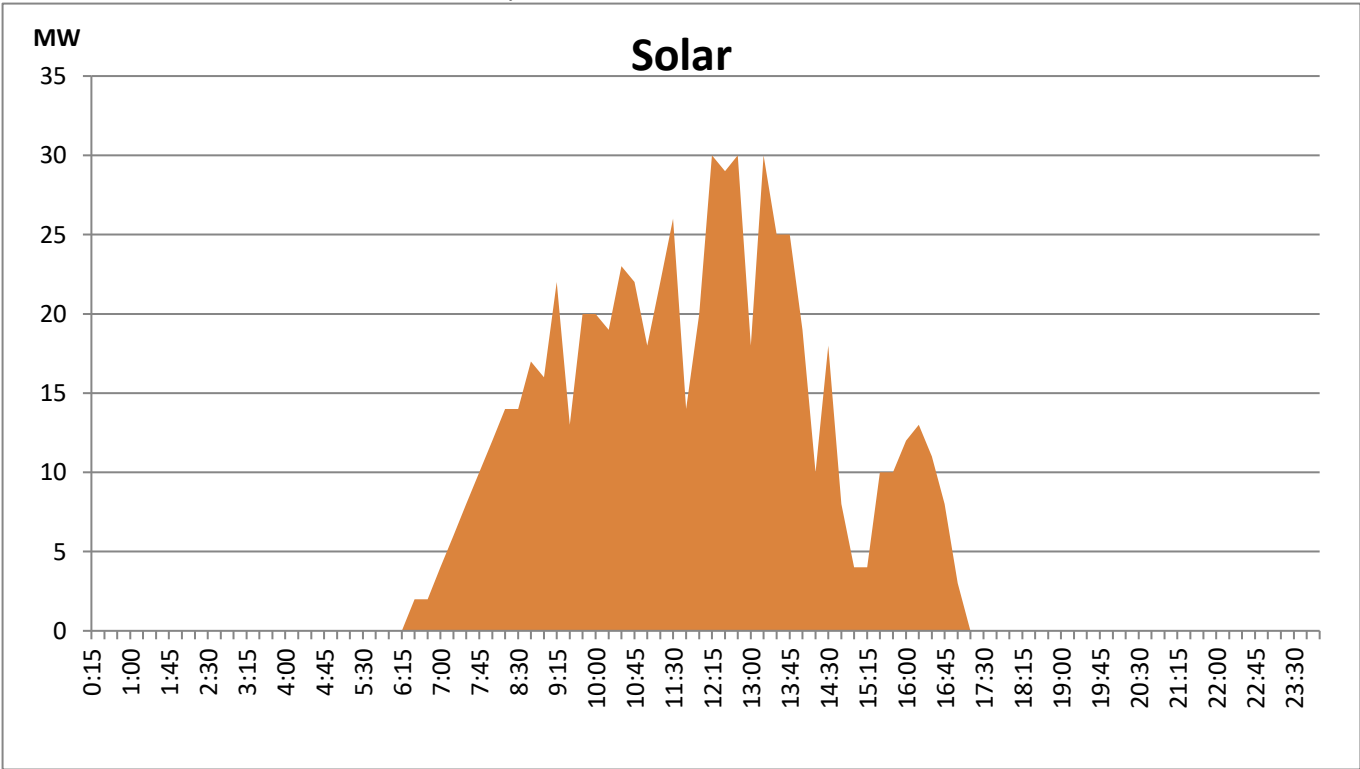
Based on Telemetered Power Stations only



Solar Generation during the Previous day

August 26, 2021

Based on Telemetered Power Stations only



Thermal Plant Fuel types

Power Station	Primary Fuel
CEB Thermal	
Sapugaskanda 1	Heavy Fuel
Sapugaskanda 2	Heavy Fuel
Kelanitissa Small Gas Turbines	Auto Diesel
GT 7 - Kelanitissa	Auto Diesel
Kelanitissa CCY	Naptha & Diesel
Lakvijaya 1	Coal
Lakvijaya 2	Coal
Lakvijaya 3	Coal
Uthuru Janani	Heavy Fuel
Barge CEB	Furnace Oil

Power Station	Primary Fuel
Private Thermal	
Sojitz -	Auto Diesel
West Coast	Low Sulphur Furnace oil

Major Incidents during the day -as reported by CEB morning of
0

August 28, 2021