

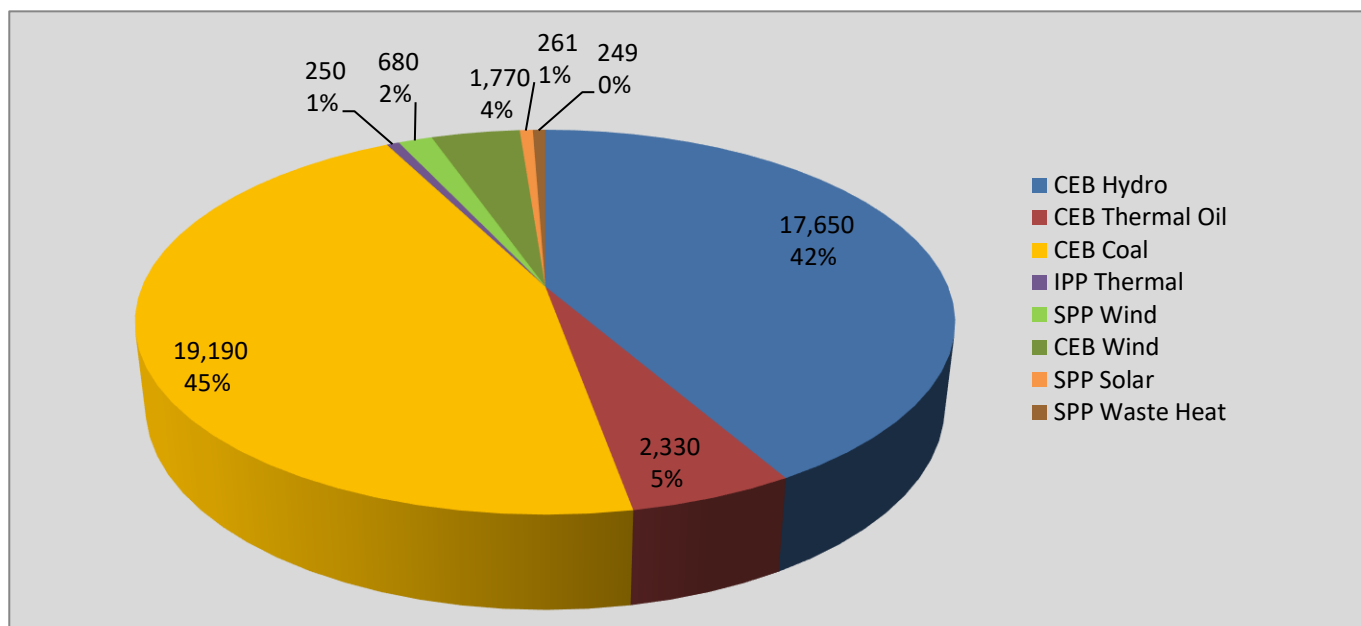
# **Generation and Reservoirs Statistics**

**August 20, 2021**



**PUBLIC UTILITIES COMMISSION OF SRI LANKA**

## Daily Generation Mix in MWh



**Total Generation 42,380 MWh**

Note: Minihydro and Biomass and waste heat (except 10 MW WH plant at Kerawalapitiya) power plant energy is not included

## Cumulative Dispatch

Note: Minihydro and Biomass and waste heat (except 10 MW WH plant at Kerawalapitiya) power plant energy is not included

### For Current Month

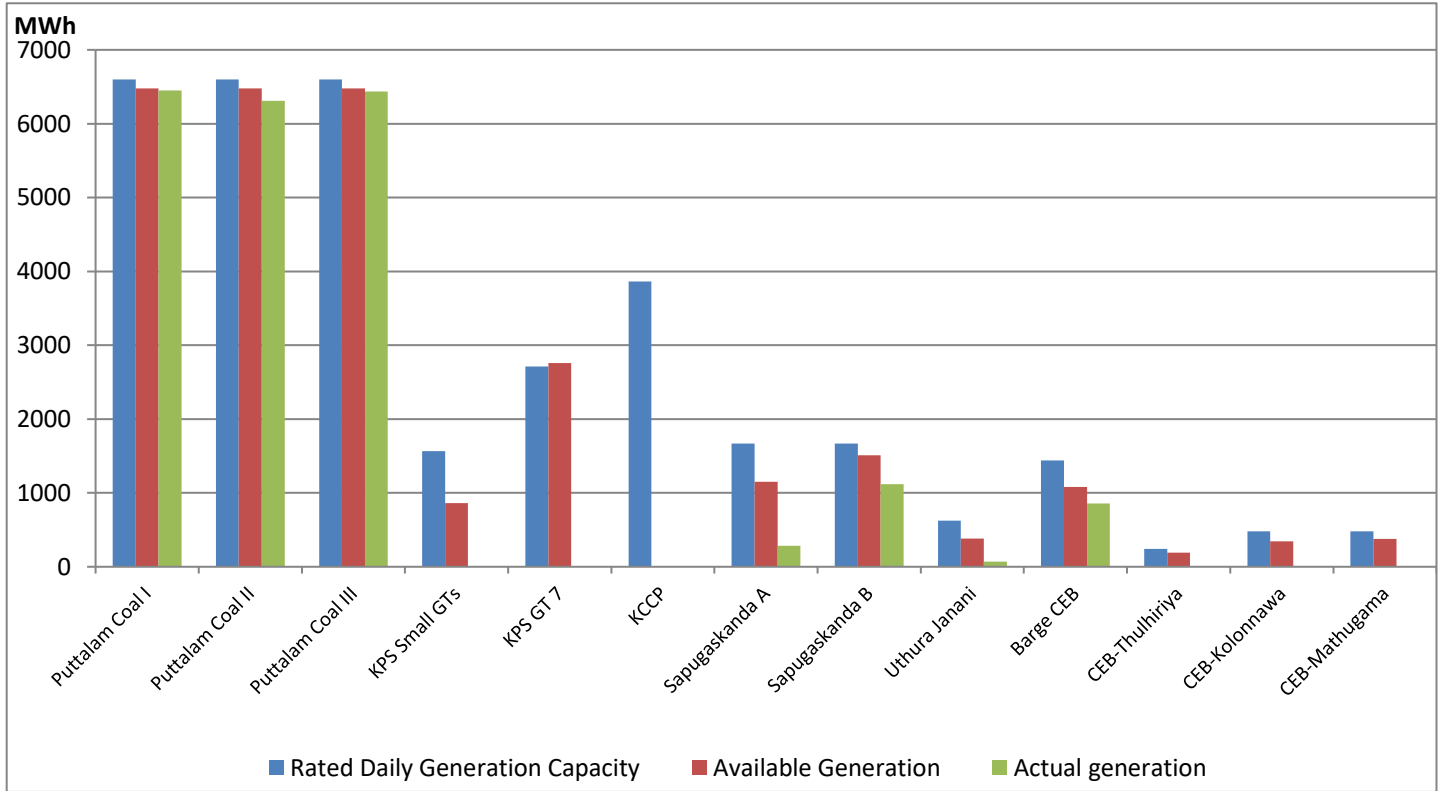
| Category        | Dispatch (GWh) | Percentage |
|-----------------|----------------|------------|
| CEB Hydro       | 320.4          | 38.38%     |
| CEB Thermal Oil | 57.0           | 6.82%      |
| CEB Coal        | 376.9          | 45.15%     |
| IPP Thermal     | 20.9           | 2.51%      |
| SPP Wind        | 16.3           | 1.96%      |
| CEB Wind        | 33.0           | 3.95%      |
| SPP Solar       | 5.6            | 0.67%      |
| SPP Waste Heat  | 4.8            | 0.58%      |
| <b>Total</b>    | <b>834.7</b>   |            |

### For Current Year

| Category        | Dispatch (GWh) | Percentage |
|-----------------|----------------|------------|
| CEB Hydro       | 3,056.1        | 32.67%     |
| CEB Thermal Oil | 886.7          | 9.48%      |
| CEB Coal        | 3,845.2        | 41.11%     |
| IPP Thermal     | 1,180.1        | 12.62%     |
| SPP Wind        | 121.0          | 1.29%      |
| CEB Wind        | 182.5          | 1.95%      |
| SPP Solar       | 62.4           | 0.67%      |
| SPP Waste Heat  | 19.6           | 0.21%      |
| <b>Total</b>    | <b>9,353.3</b> |            |

## CEB owned Thermal Plant Dispatch

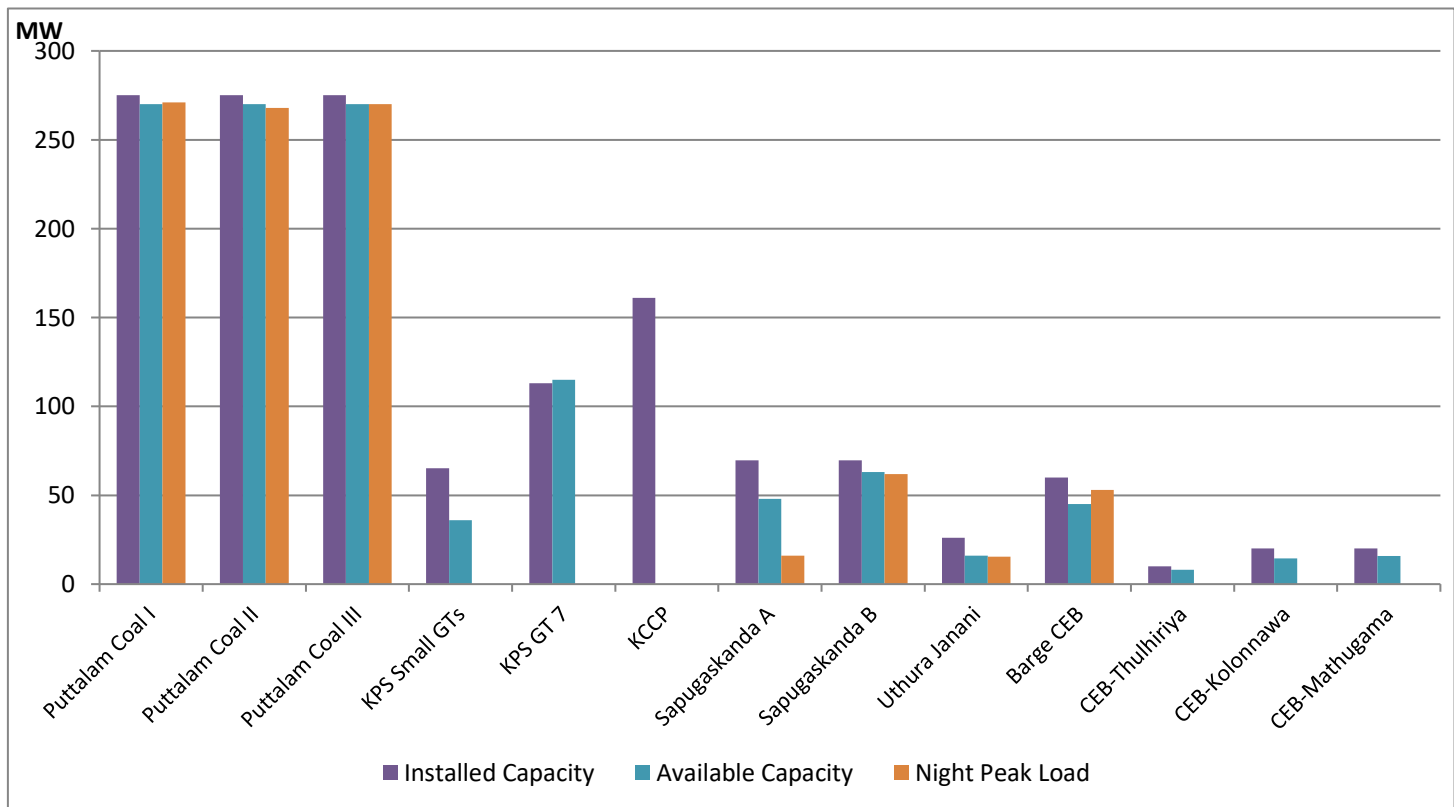
August 20, 2021



Available Generation is estimated based on plant availability at 6.00am on

August 21, 2021

## CEB owned Thermal Plant Loading at the Night Peak



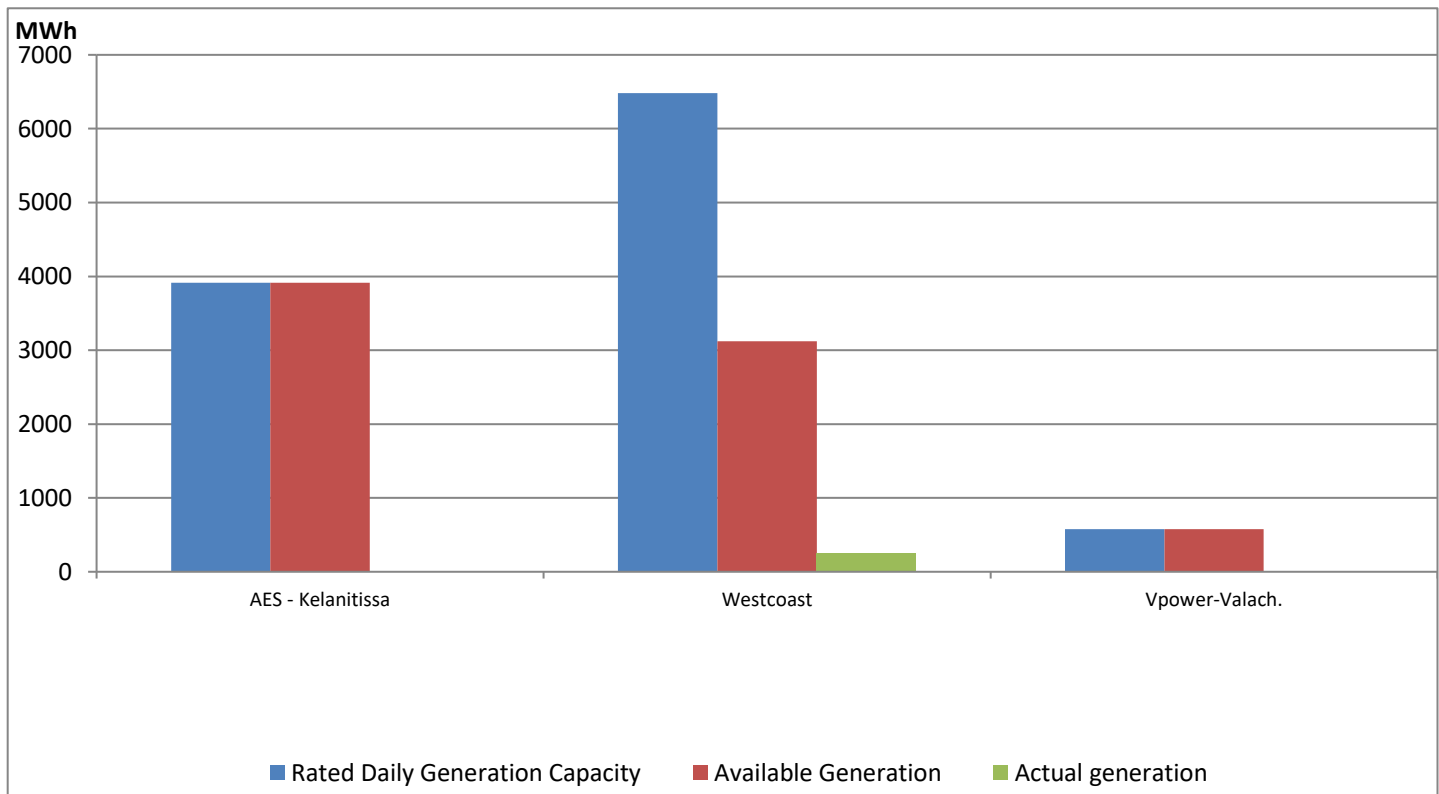
Note- Plant availability is recorded at 6.00 am on

August 21, 2021

## IPP owned Thermal Plant Dispatch

August 20, 2021

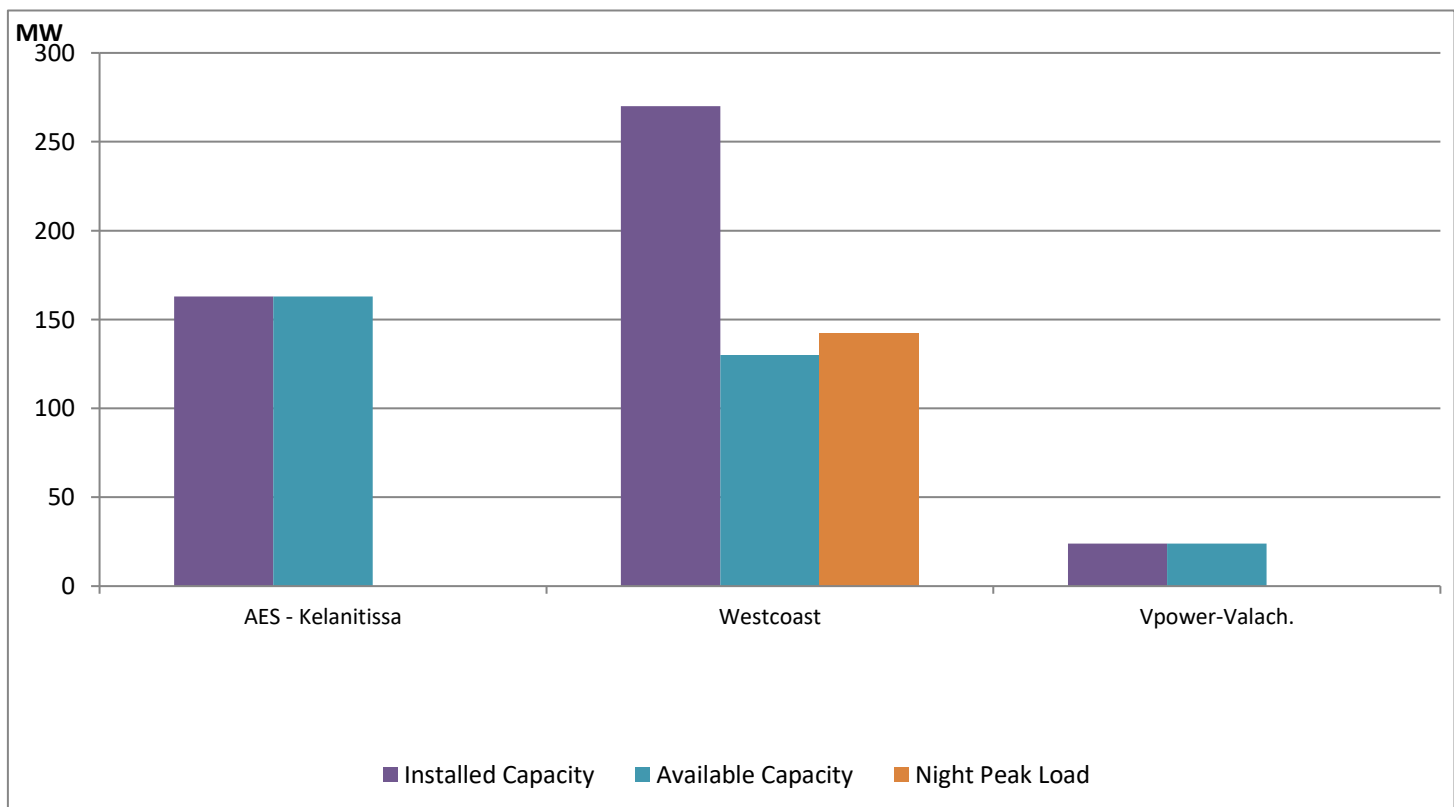
ACE Embilipitiya, ACE Matara, Asia Power, V Power Pallekale, Vpower Galle, V Power Horana, Vpower Hambantota and Altaqa Mahiyanganaya are not available due to expiration of PPAs



Available Generation is estimated based on plant availability at 6.00am on

August 21, 2021

## IPP owned Thermal Plant Loading at the Night Peak

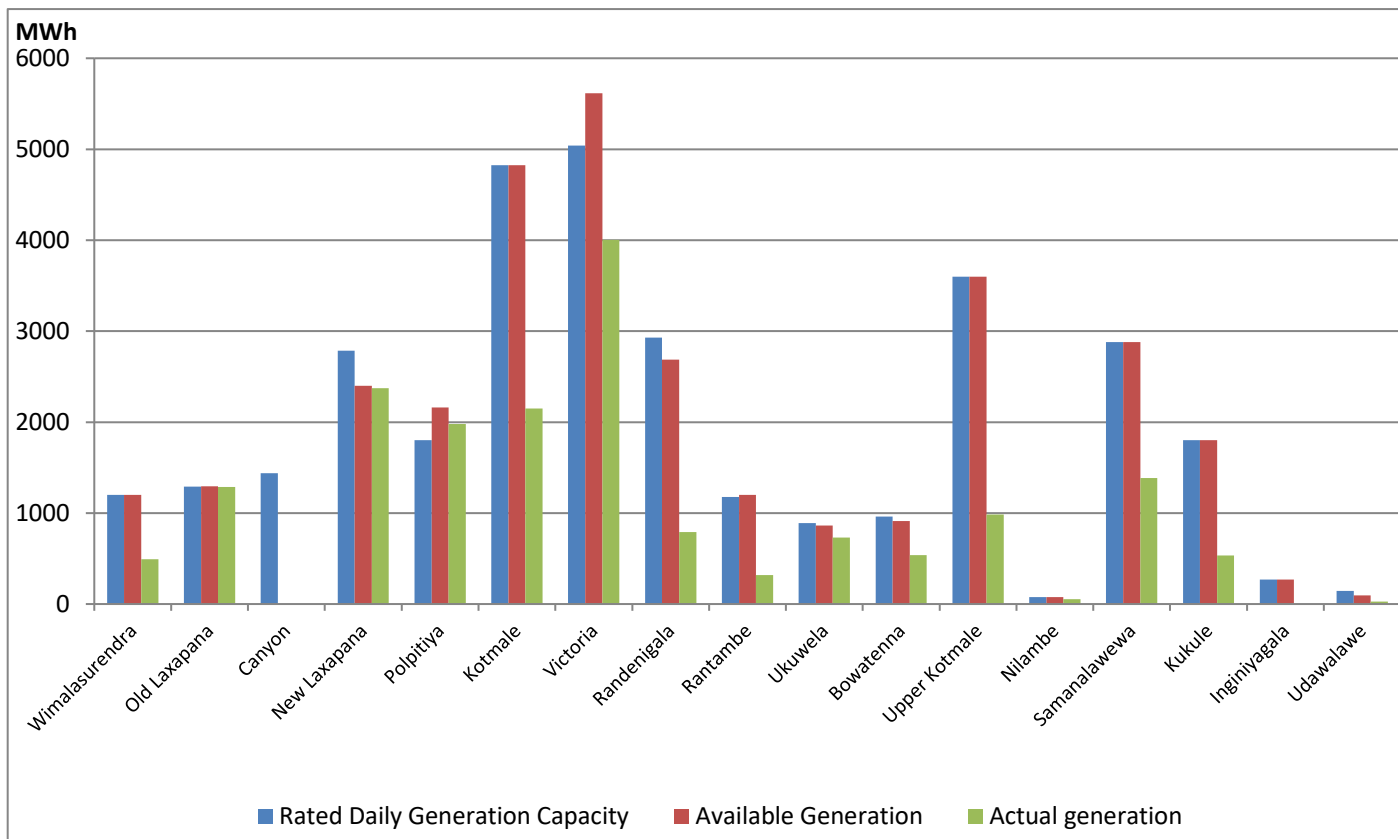


Note- Plant availability is recorded at 6.00 am on

August 21, 2021

## Major Hydro Plant Dispatch

August 20, 2021

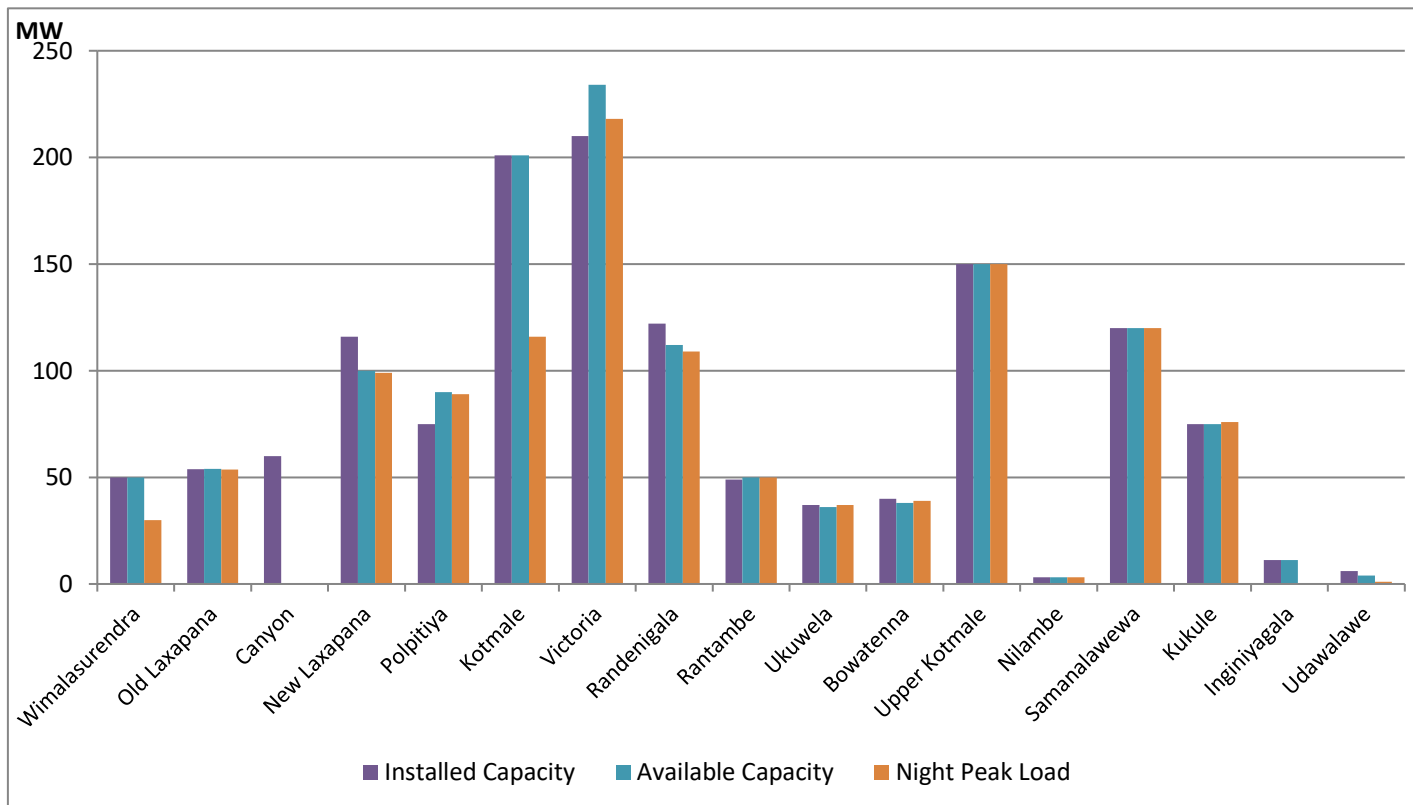


Note- Available Generation is estimated based on plant availability at 6.00am on

August 21, 2021

## Major Hydro Plant Loading at Night Peak

August 20, 2021



Note- Plant availability is recorded at 6.00 am on

August 21, 2021

Summary of Major Plant performance

| Plant              | Installed Capacity<br>(MW) | Plant Availability<br>(MW) | Night peak Load<br>(MW) | Plant Dispatch<br>(GWh) |
|--------------------|----------------------------|----------------------------|-------------------------|-------------------------|
| Wimalasurendra     | 50.00                      | 50.00                      | 30.00                   | 491.00                  |
| Old Laxapana       | 53.80                      | 54.00                      | 53.60                   | 1,287.00                |
| Canyon             | 60.00                      | -                          | -                       | -                       |
| New Laxapana       | 116.00                     | 100.00                     | 99.00                   | 2,373.00                |
| Polpitiya          | 75.00                      | 90.00                      | 89.00                   | 1,980.00                |
| Kotmale            | 201.00                     | 201.00                     | 116.00                  | 2,150.00                |
| Victoria           | 210.00                     | 234.00                     | 218.00                  | 4,004.00                |
| Randenigala        | 122.00                     | 112.00                     | 109.00                  | 792.00                  |
| Rantambe           | 49.00                      | 50.00                      | 50.00                   | 319.00                  |
| Ukuwela            | 37.00                      | 36.00                      | 37.00                   | 730.00                  |
| Bowatenna          | 40.00                      | 38.00                      | 39.00                   | 538.00                  |
| Upper Kotmale      | 150.00                     | 150.00                     | 150.00                  | 985.00                  |
| Nilambe            | 3.20                       | 3.20                       | 3.20                    | 54.00                   |
| Samanalawewa       | 120.00                     | 120.00                     | 120.00                  | 1,385.00                |
| Kukule             | 75.00                      | 75.00                      | 75.90                   | 534.00                  |
| Inginiyagala       | 11.25                      | 11.25                      | -                       | -                       |
| Udawalawe          | 6.00                       | 4.00                       | 1.00                    | 28.00                   |
| Puttalam Coal I    | 275.00                     | 270.00                     | 271.00                  | 6,448.00                |
| Puttalam Coal II   | 275.00                     | 270.00                     | 268.00                  | 6,310.00                |
| Puttalam Coal III  | 275.00                     | 270.00                     | 270.00                  | 6,435.00                |
| KPS Small GTs      | 65.20                      | 36.00                      | -                       | -                       |
| KPS GT 7           | 113.00                     | 115.00                     | -                       | -                       |
| KCCP               | 161.00                     | -                          | -                       | -                       |
| Sapugaskanda A     | 69.60                      | 48.00                      | 16.00                   | 285.00                  |
| Sapugaskanda B     | 69.60                      | 63.00                      | 62.00                   | 1,120.00                |
| Uthura Janani      | 26.01                      | 16.00                      | 15.50                   | 69.00                   |
| Barge CEB          | 60.00                      | 45.00                      | 53.00                   | 859.00                  |
| CEB-Thulhiriya     | 10.00                      | 8.00                       | -                       | -                       |
| CEB-Kolonnawa      | 20.00                      | 14.40                      | -                       | -                       |
| CEB-Mathugama      | 20.00                      | 15.80                      | -                       | -                       |
| AES - Kelanitissa  | 163.00                     | 163.00                     | -                       | -                       |
| Westcoast          | 270.00                     | 130.00                     | 142.00                  | 247.00                  |
| Vpower-Valach.     | 24.00                      | 24.00                      | -                       | -                       |
| Solar              | 58.00                      |                            | -                       | 260.00                  |
| Wind               | 128.00                     |                            | 52.60                   | 2,447.00                |
| MH and BM          | 394.00                     |                            | 82.00                   | Not available           |
| Total without NCRE | 3,538.46                   | 2,816.65                   |                         |                         |

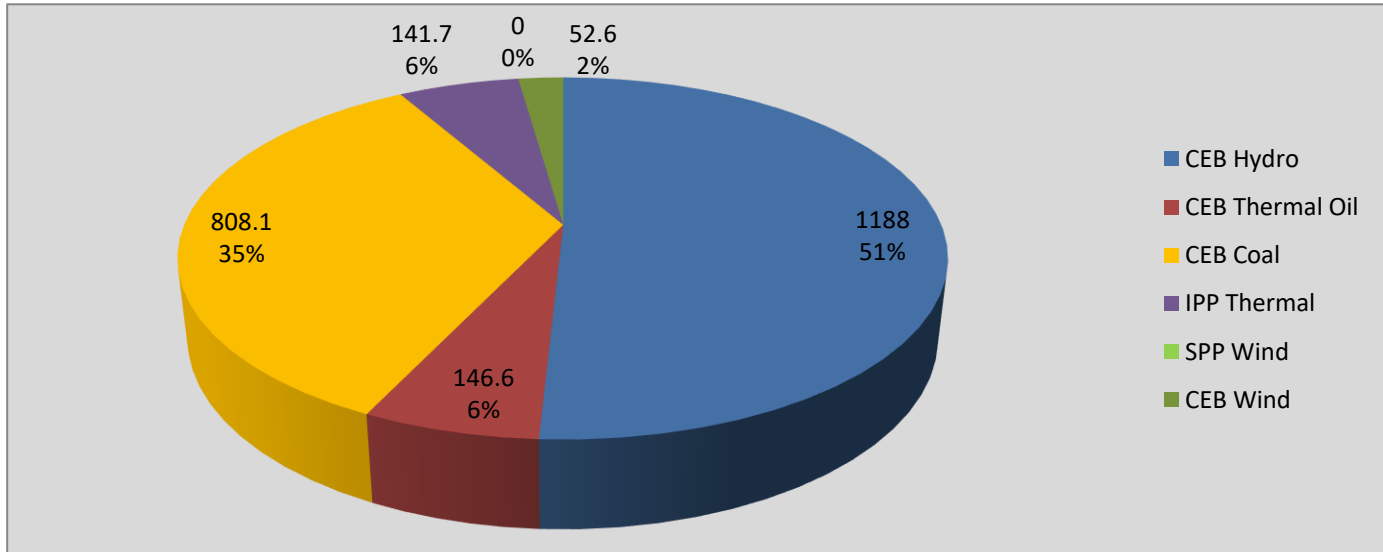
Night peak load of MH and BM only include loading of Minihydro plants of total capacity MW 190

Installed capacity of Solar, wind, Mini-hydro and Biomass plants are as of end of December 2019

Plant availability is the availability recorded at 6 am on August 21, 2021

## Contribution to the Night Peak in MW

August 20, 2021

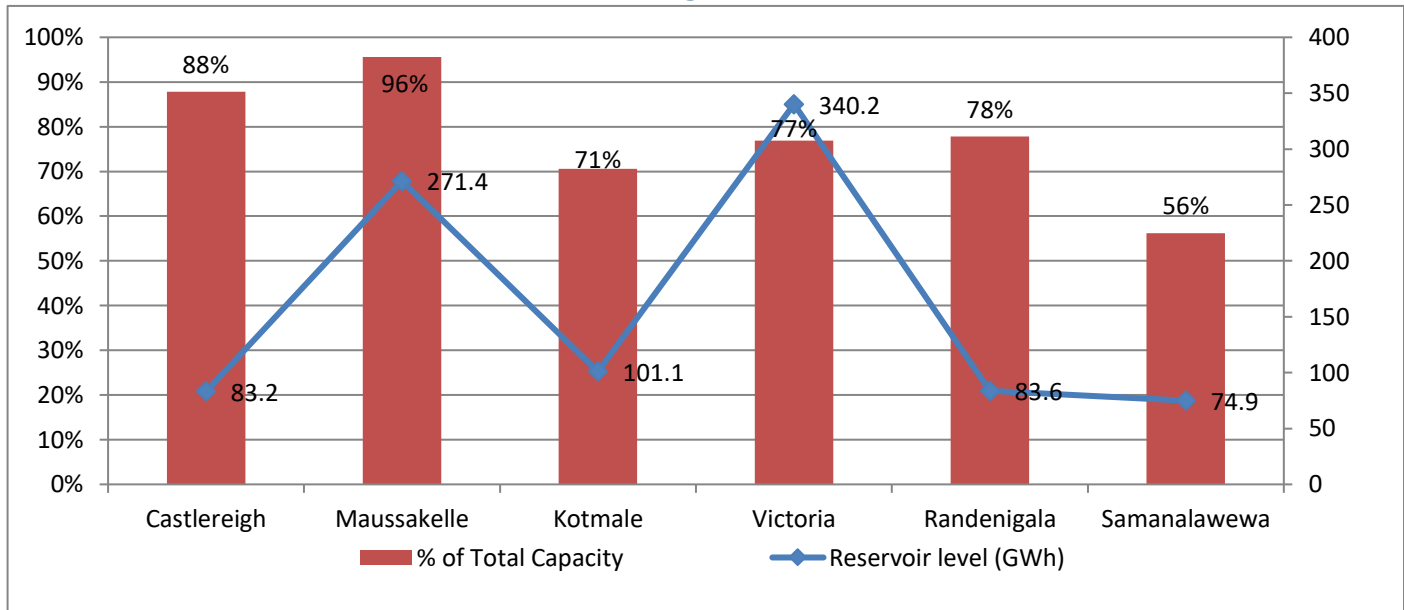


|                |            |
|----------------|------------|
| Night Peak*    | 2,337.0 MW |
| Day Peak       | 1,988.3 MW |
| Minimum Demand | 1,272.1 MW |

Notes: \*The above chart pattern and night peak figure is presented excluding the contribution of Moragahakanda, other minihydro and biomass power plants  
 \*\*Day peak and Minimum demand includes the contribution from Moragahakanda, wind and solar plants

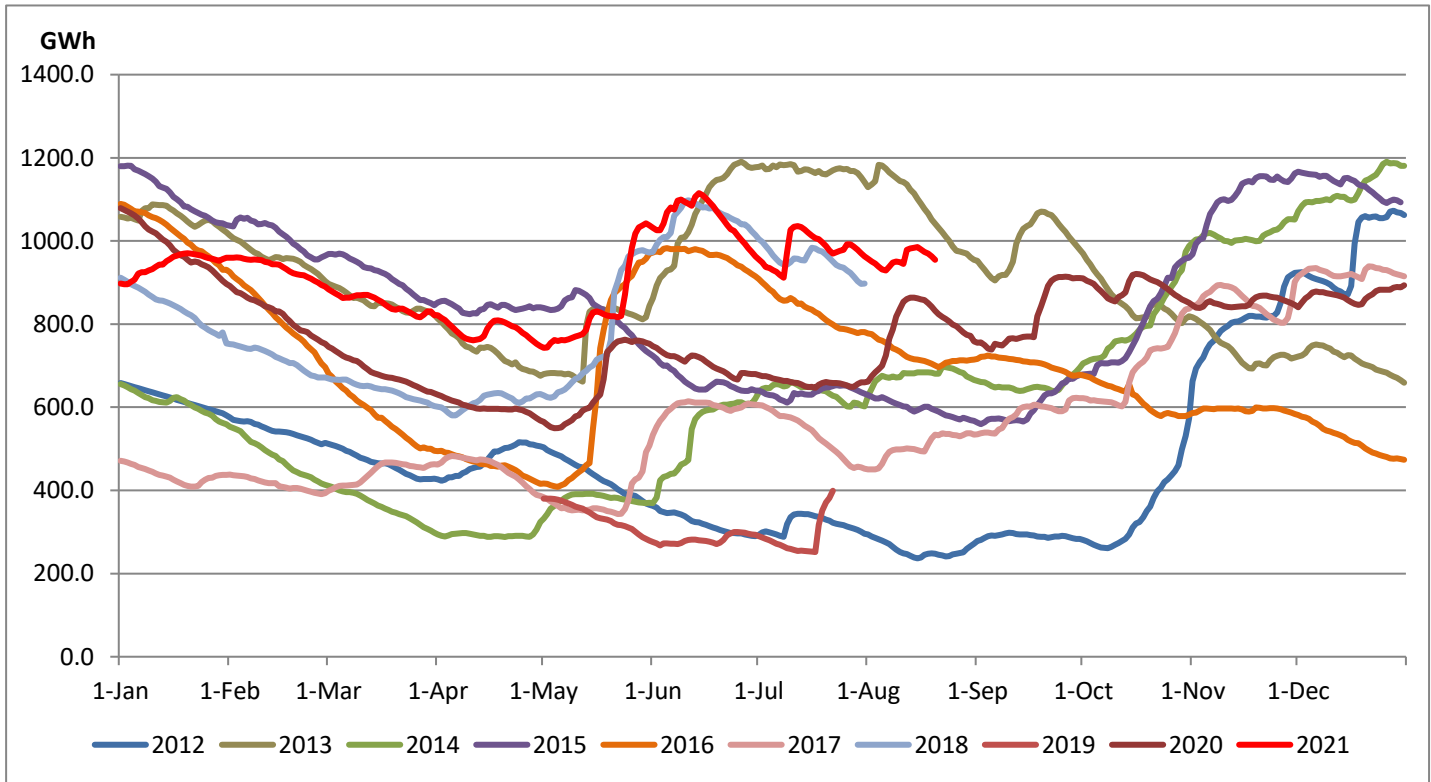
\* in addition to the night peak figure presented above, Kerawalapitiya waste heat plant, other MiniHydro and Biomass Plants of installed capacity 190.00 MW has recorded total 82.00 MW at night peak

## Reservoir Levels - as at 06.00 Hr on August 21, 2021



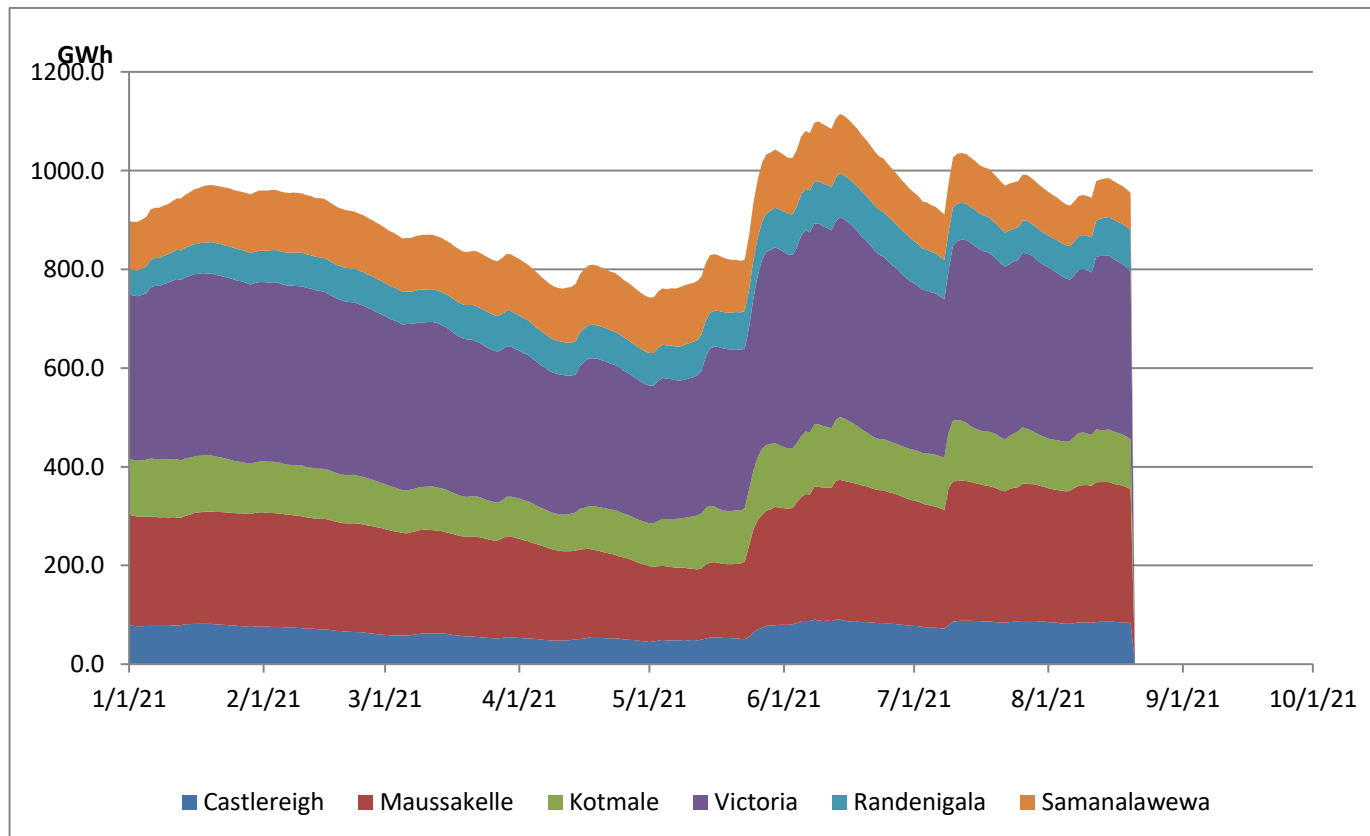
|                            |       |
|----------------------------|-------|
| Total Reservoir Level(GWh) | 954.4 |
| % of Total capacity        | 79.2% |

## Comparison of Total Reservoir Storage Levels with Past Years



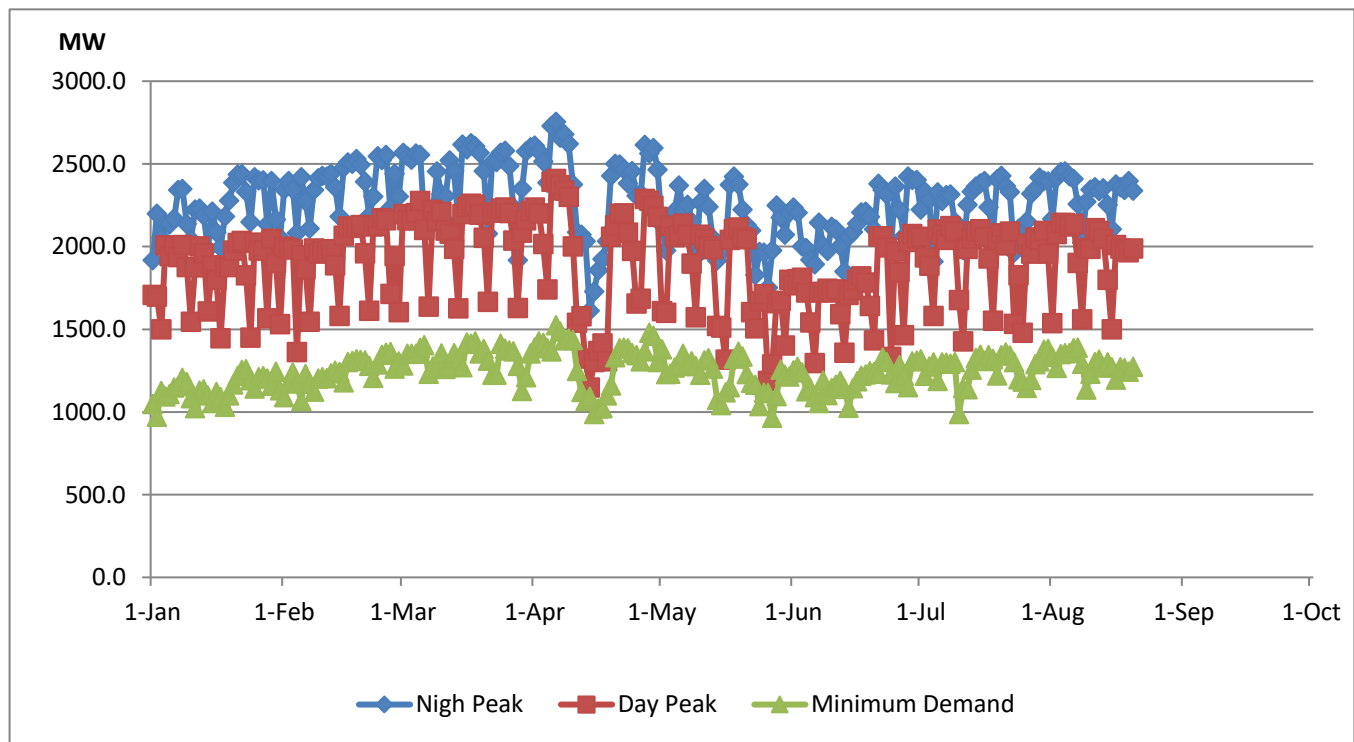
Data for 2018 and 2019 are only available for part of year.

## Variation of Major Hydro Reservoir Levels in the current year (GWh)





## Variation of Demand during the current year



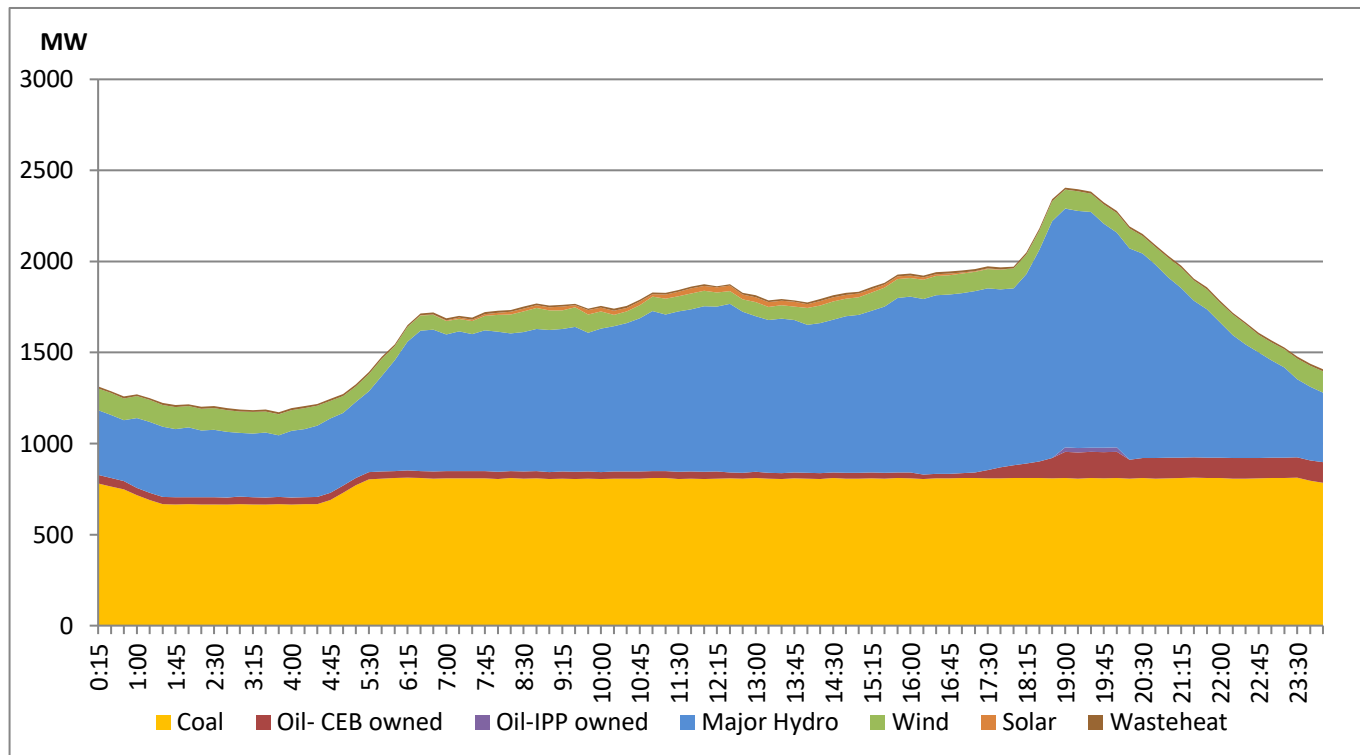
### Notes:

The night peak is excluding the contribution from Minihydro and biomass power plants  
 Day peak and minimum demand graphs includes the contribution from Moragahakanda power plant  
 All graphs include the contribution from telemetered solar and wind plants

## Daily Load Curve of the Previous day

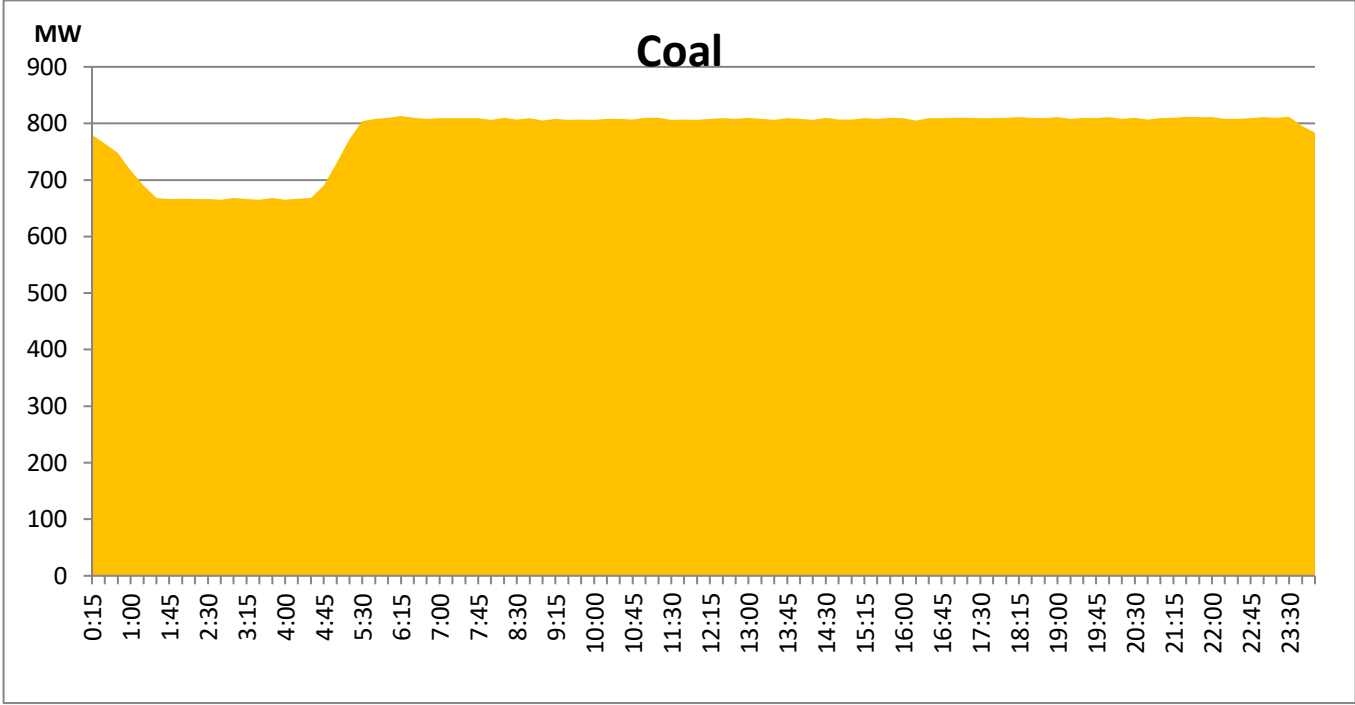
August 19, 2021

Solar and wind data is based on Telemetered Power Stations only



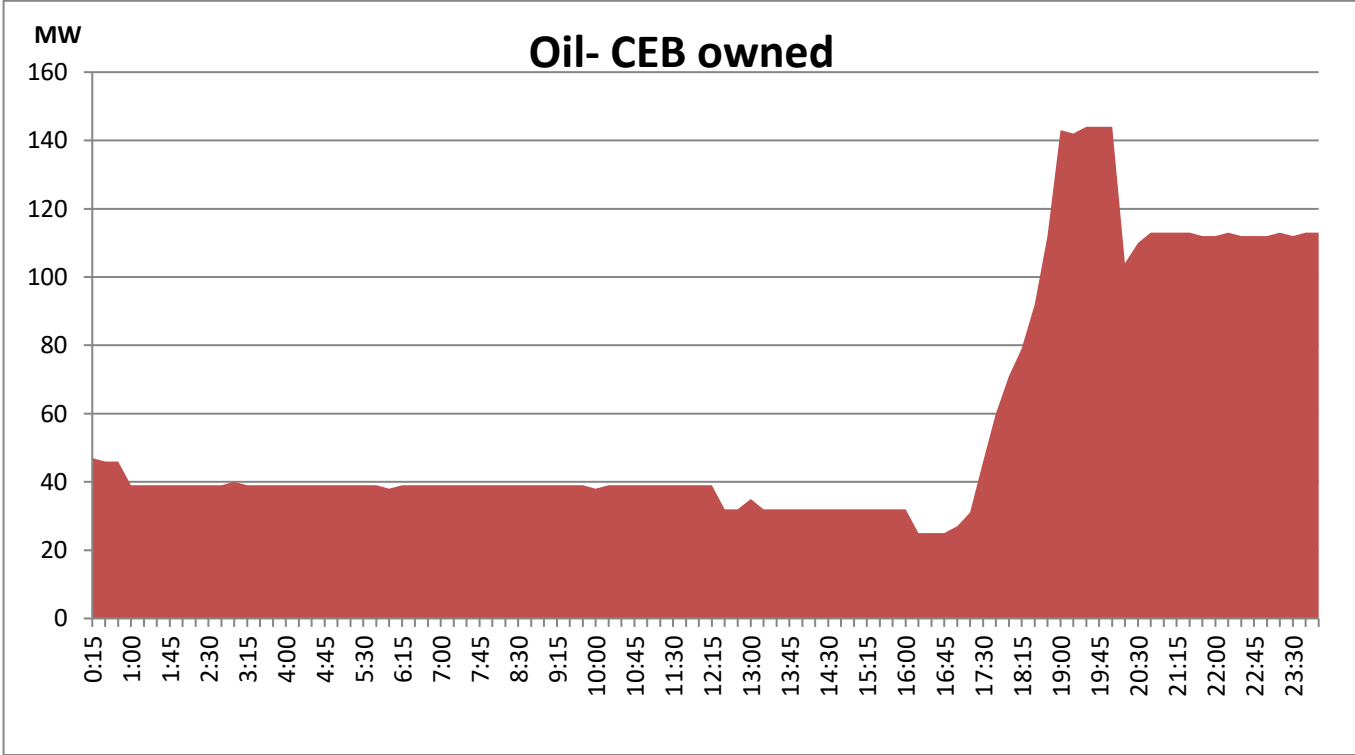
Coal Generation during the Previous day

August 19, 2021



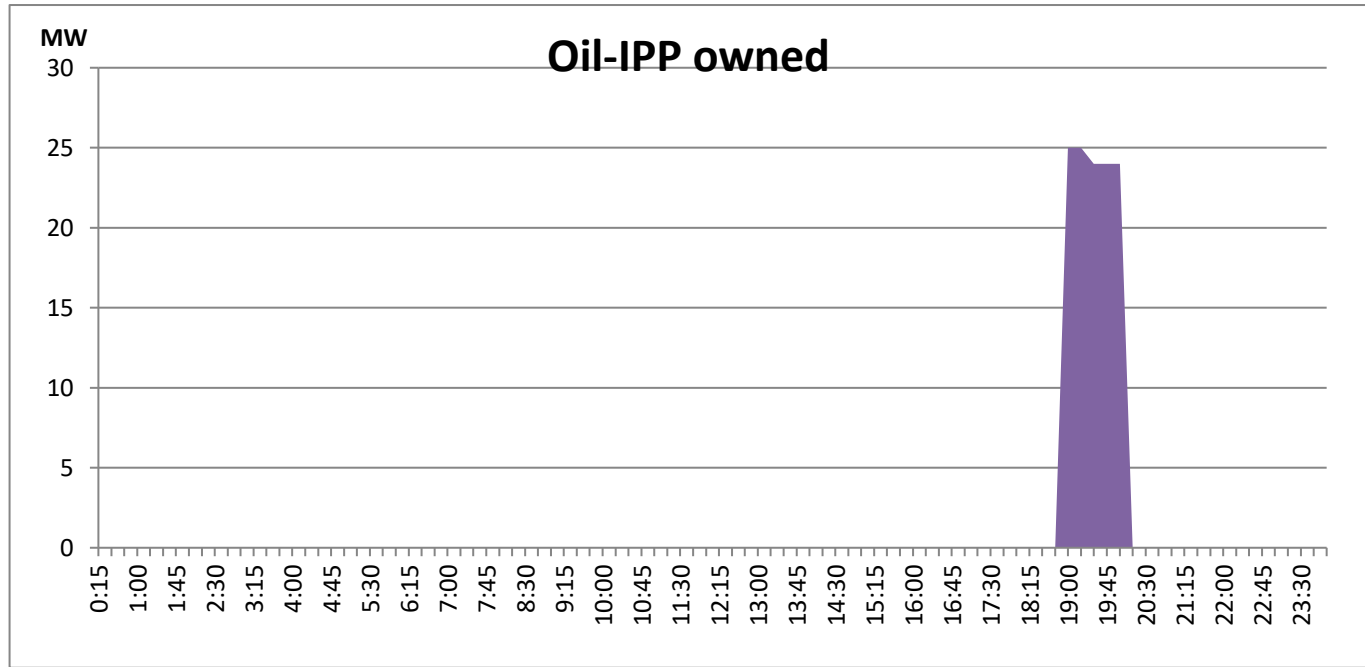
CEB Oil Plant Generation during the Previous day

August 19, 2021



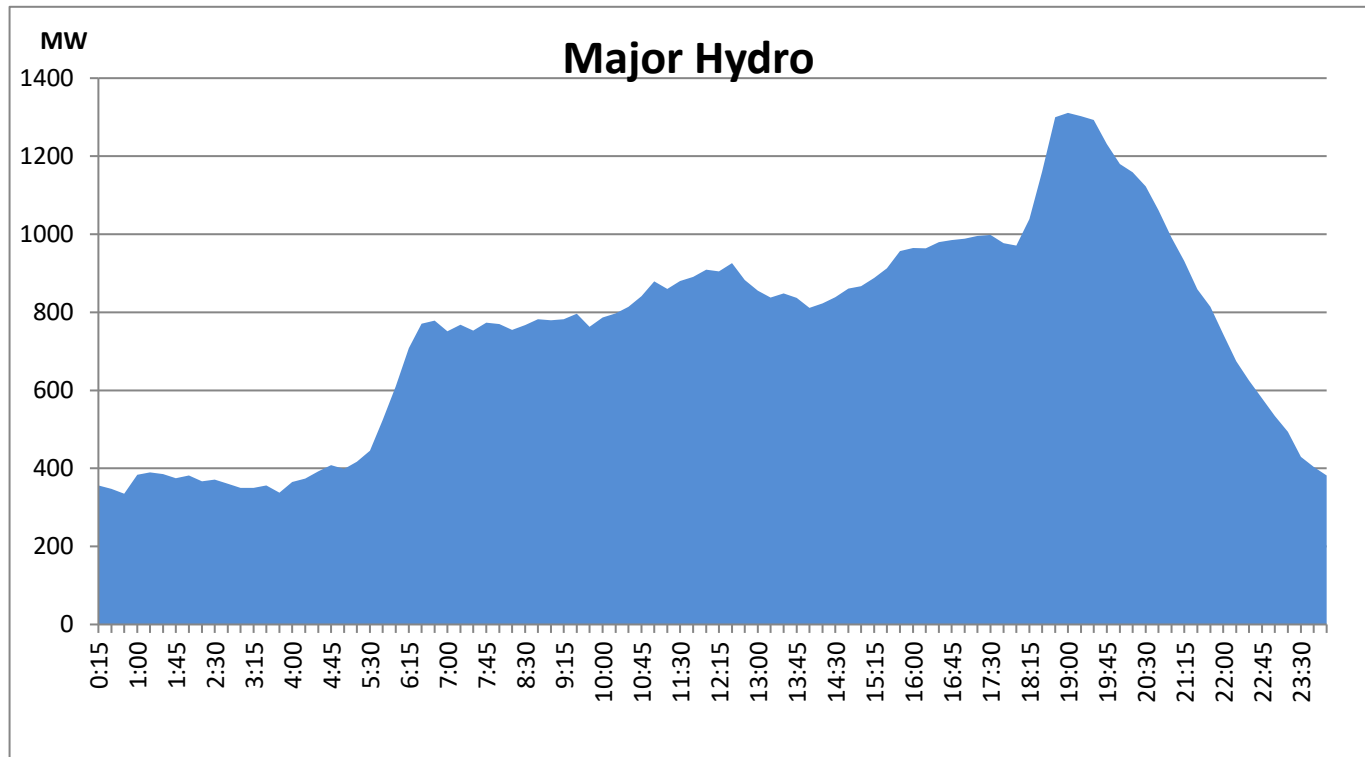
### IPP Oil Plant Generation during the Previous day

August 19, 2021



### Major Hydro Generation during the Previous day

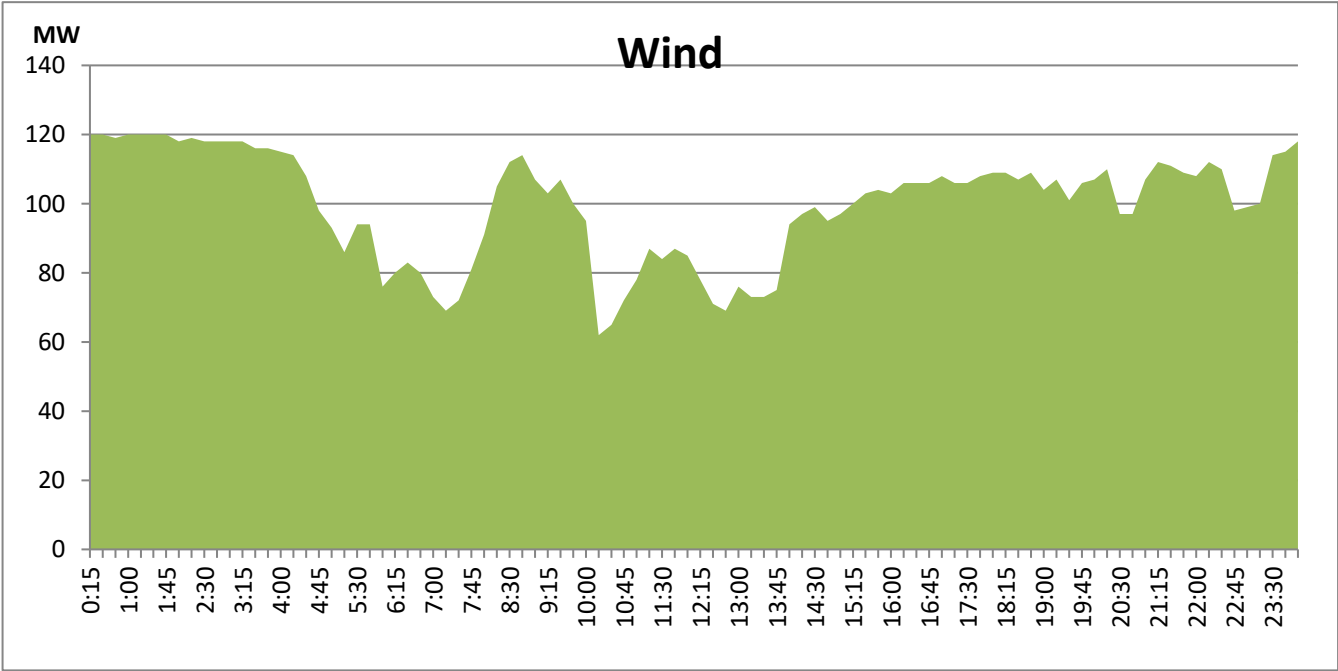
August 19, 2021



# Wind Generation during the Previous day

August 19, 2021

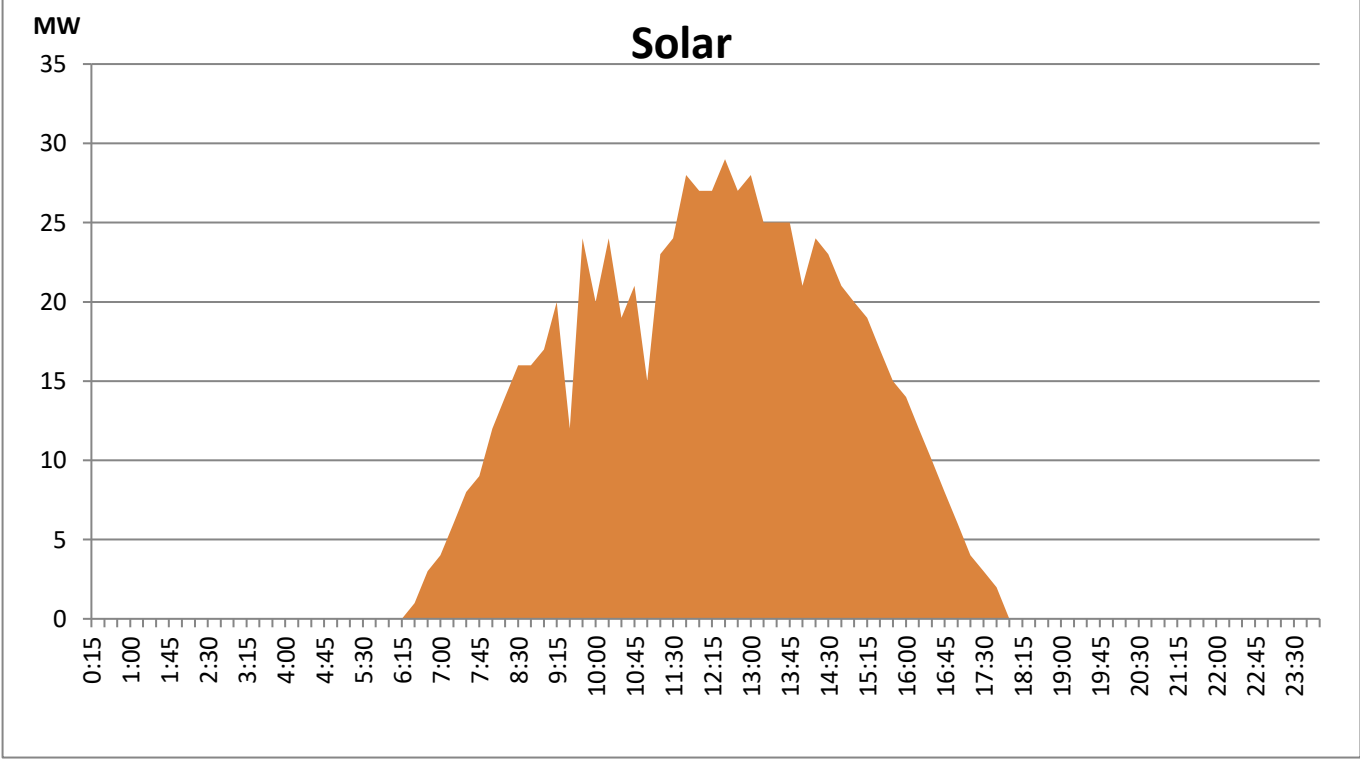
Based on Telemetered Power Stations only



# Solar Generation during the Previous day

August 19, 2021

Based on Telemetered Power Stations only



## Thermal Plant Fuel types

| Power Station                  | Primary Fuel    |
|--------------------------------|-----------------|
| CEB Thermal                    |                 |
| Sapugaskanda 1                 | Heavy Fuel      |
| Sapugaskanda 2                 | Heavy Fuel      |
| Kelanitissa Small Gas Turbines | Auto Diesel     |
| GT 7 - Kelanitissa             | Auto Diesel     |
| Kelanitissa CCY                | Naptha & Diesel |
| Lakvijaya 1                    | Coal            |
| Lakvijaya 2                    | Coal            |
| Lakvijaya 3                    | Coal            |
| Uthuru Janani                  | Heavy Fuel      |
| Barge CEB                      | Furnace Oil     |
|                                |                 |

| Power Station   | Primary Fuel               |
|-----------------|----------------------------|
| Private Thermal |                            |
| Sojitz -        | Auto Diesel                |
| West Coast      | Low Sulphur<br>Furnace oil |
|                 |                            |
|                 |                            |

### Major Incidents during the day -as reported by CEB morning of

**August 21, 2021**

1) N'Polpitiya-Thulhiriya-Athurugiriya cct trpped from all ends at 12:52hrs due to the operation of distance protection. The cct was restored at 13:04hrs.

2) Matara 132/33kV T/F 03 tripped at 18:18hrs and was restored at 18:34hrs.