

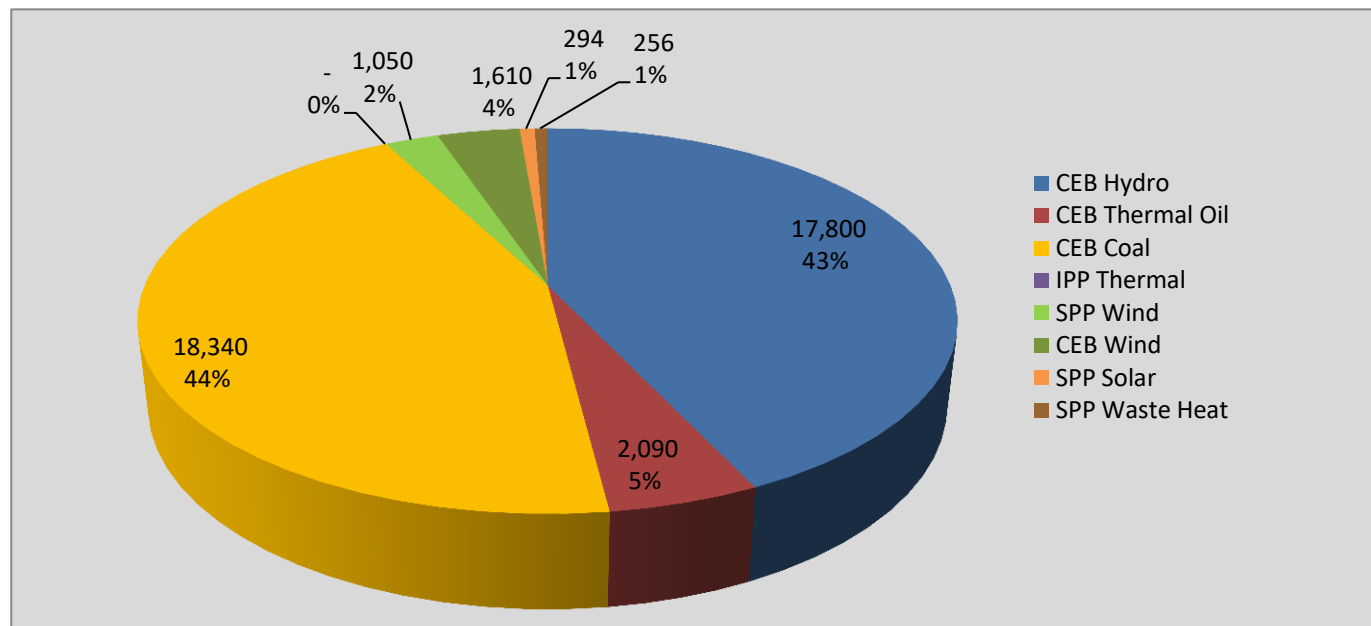
# **Generation and Reservoirs Statistics**

**August 10, 2021**



PUBLIC UTILITIES COMMISSION OF SRI LANKA

## Daily Generation Mix in MWh



### Total Generation

**41,440 MWh**

Note: Minihydro and Biomass and waste heat (except 10 MW WH plant at Kerawalapitiya) power plant energy is not included

## Cumulative Dispatch

Note: Minihydro and Biomass and waste heat (except 10 MW WH plant at Kerawalapitiya) power plant energy is not included

### For Current Month

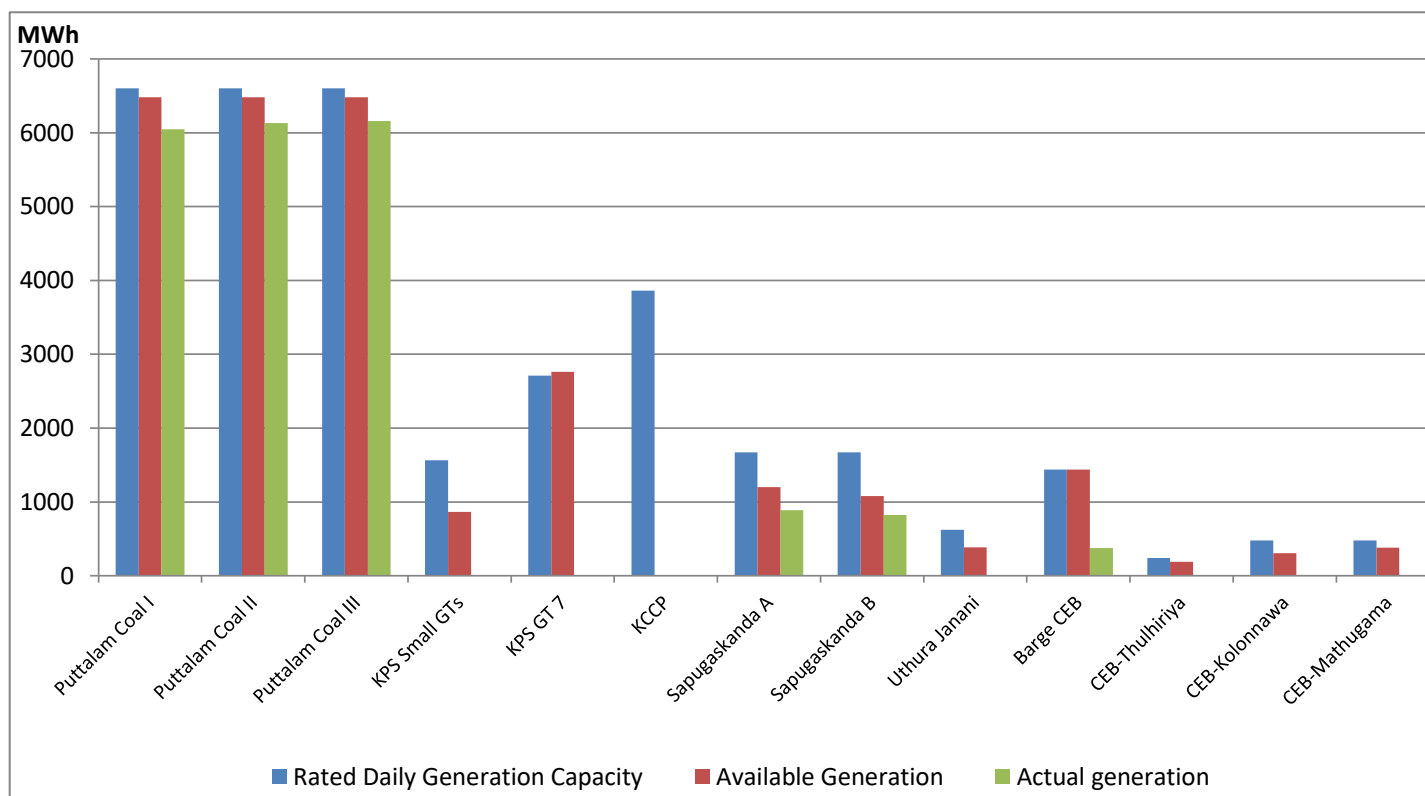
Category	Dispatch (GWh)	
CEB Hydro	147.6	35.00%
CEB Thermal Oil	33.7	8.00%
CEB Coal	187.7	44.52%
IPP Thermal	20.2	4.80%
SPP Wind	9.6	2.27%
CEB Wind	17.6	4.18%
SPP Solar	2.9	0.69%
SPP Waste Heat	2.3	0.56%
<b>Total</b>	<b>421.6</b>	

### For Current Year

Category	Dispatch (GWh)	
CEB Hydro	2,883.2	32.25%
CEB Thermal Oil	863.5	9.66%
CEB Coal	3,656.0	40.89%
IPP Thermal	1,179.4	13.19%
SPP Wind	114.2	1.28%
CEB Wind	167.1	1.87%
SPP Solar	59.7	0.67%
SPP Waste Heat	17.1	0.19%
<b>Total</b>	<b>8,940.2</b>	

## CEB owned Thermal Plant Dispatch

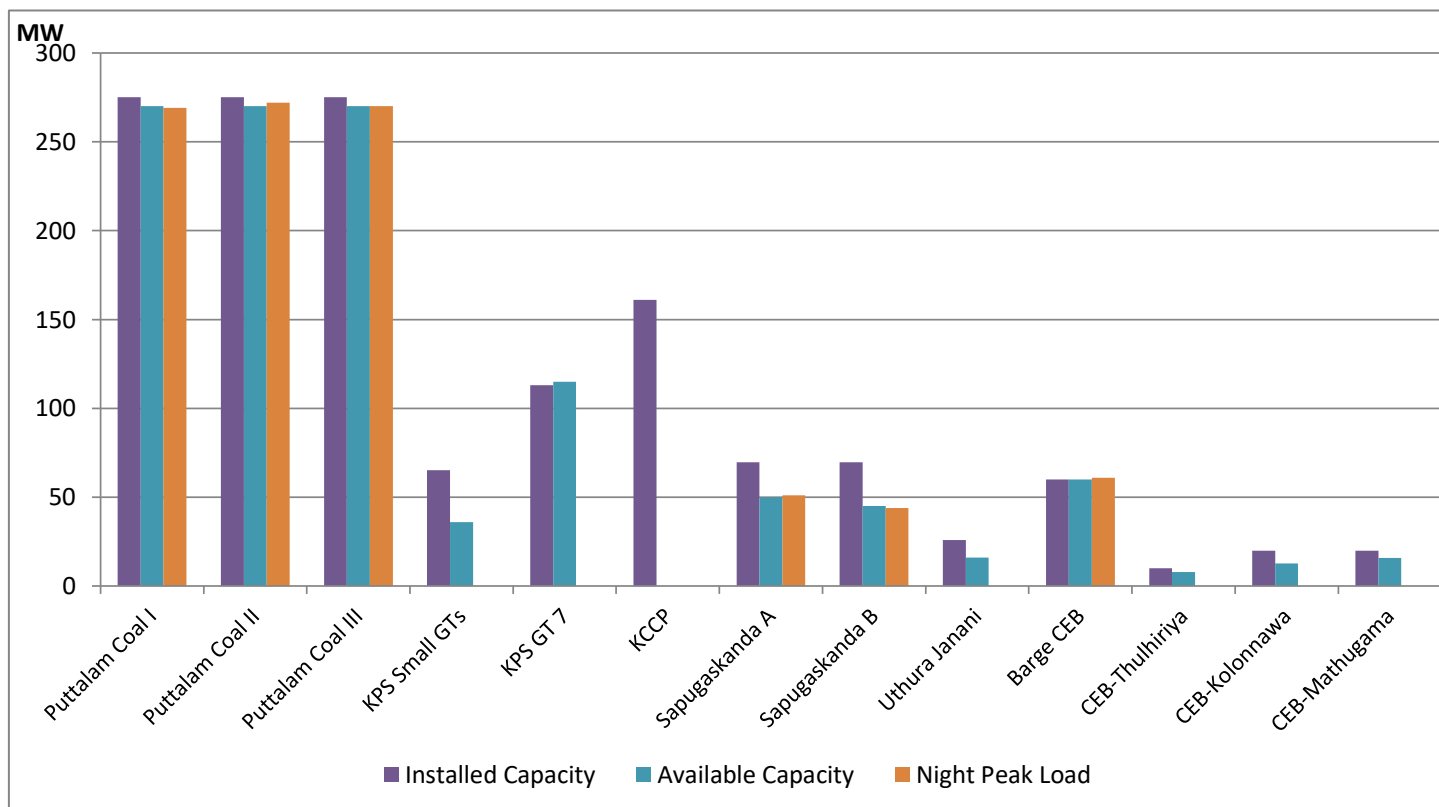
August 10, 2021



Available Generation is estimated based on plant availability at 6.00am on

August 11, 2021

## CEB owned Thermal Plant Loading at the Night Peak



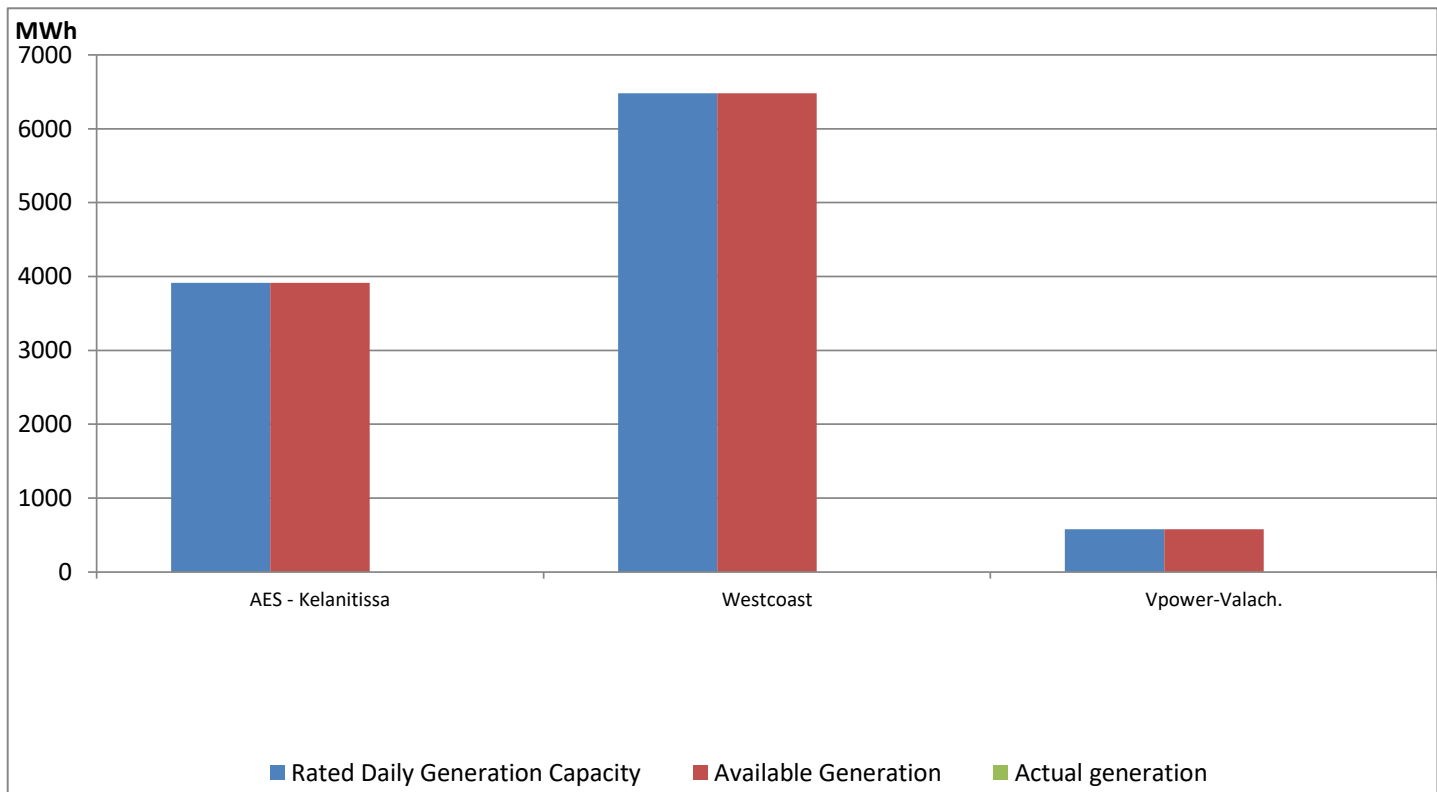
Note- Plant availability is recorded at 6.00 am on

August 11, 2021

## IPP owned Thermal Plant Dispatch

August 10, 2021

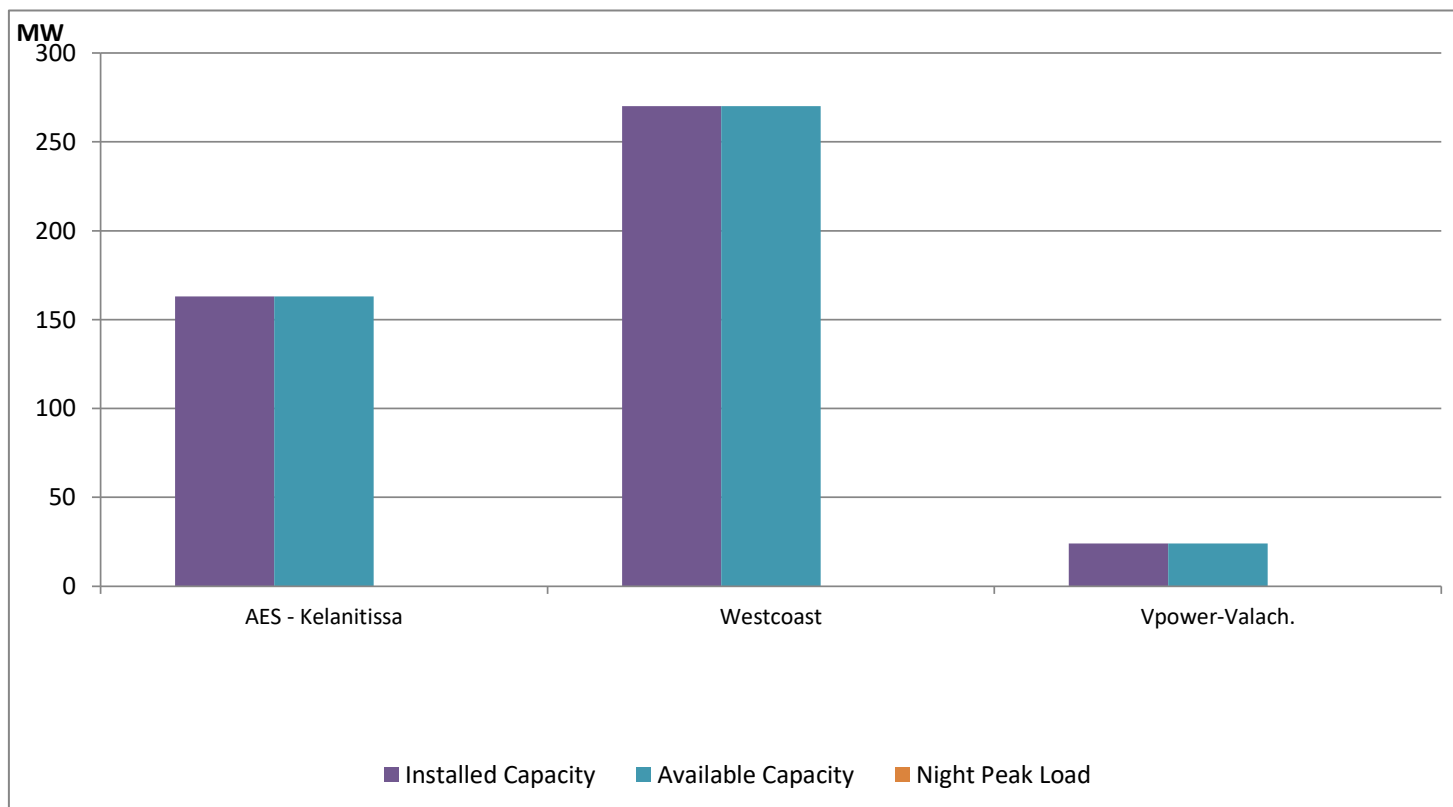
ACE Embilipitiya, ACE Matara, Asia Power, V Power Pallekale, Vpower Galle, V Power Horana, Vpower Hambantota and Altaqa Mahiyanganaya are not available due to expiration of PPAs



Available Generation is estimated based on plant availability at 6.00am on

August 11, 2021

## IPP owned Thermal Plant Loading at the Night Peak

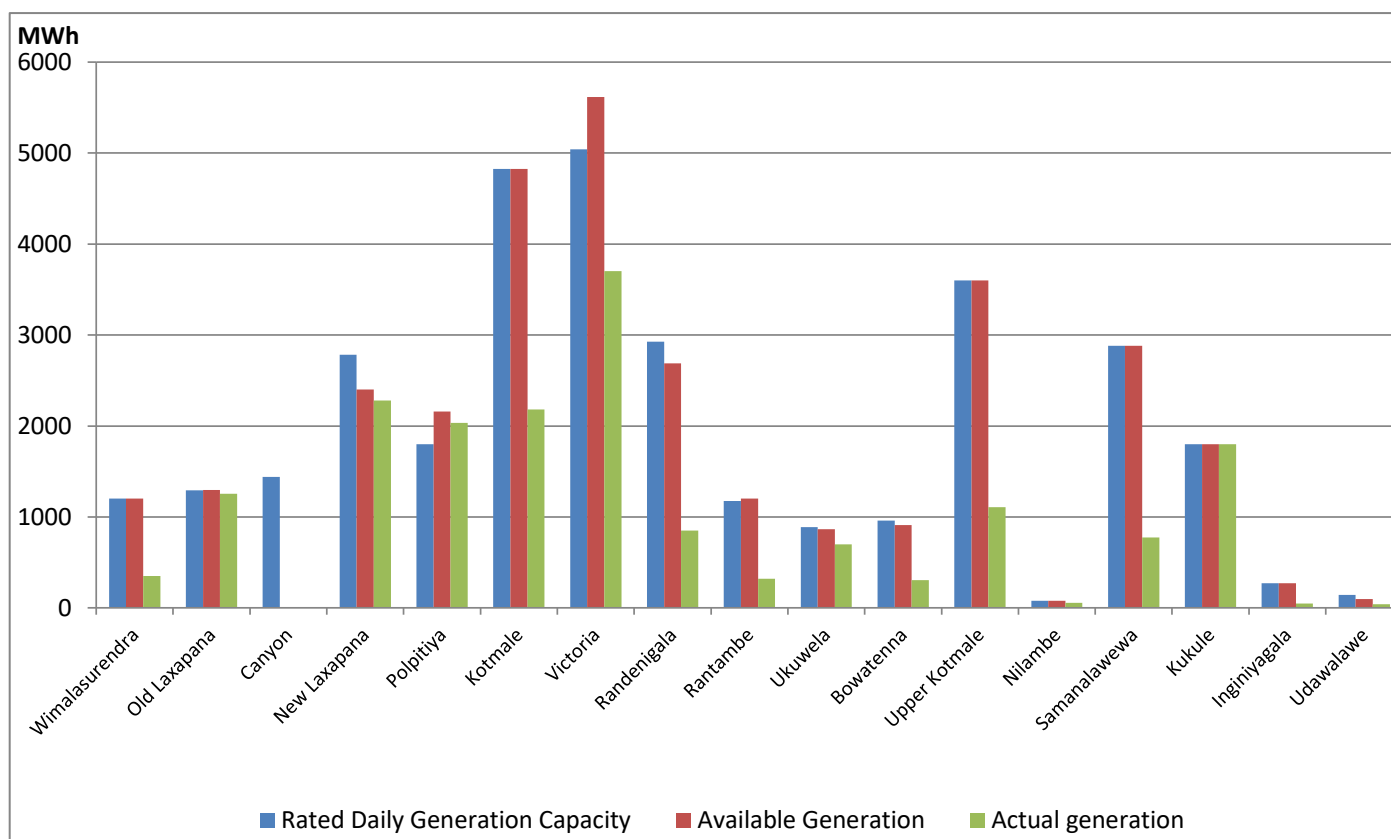


Note- Plant availability is recorded at 6.00 am on

August 11, 2021

## Major Hydro Plant Dispatch

August 10, 2021

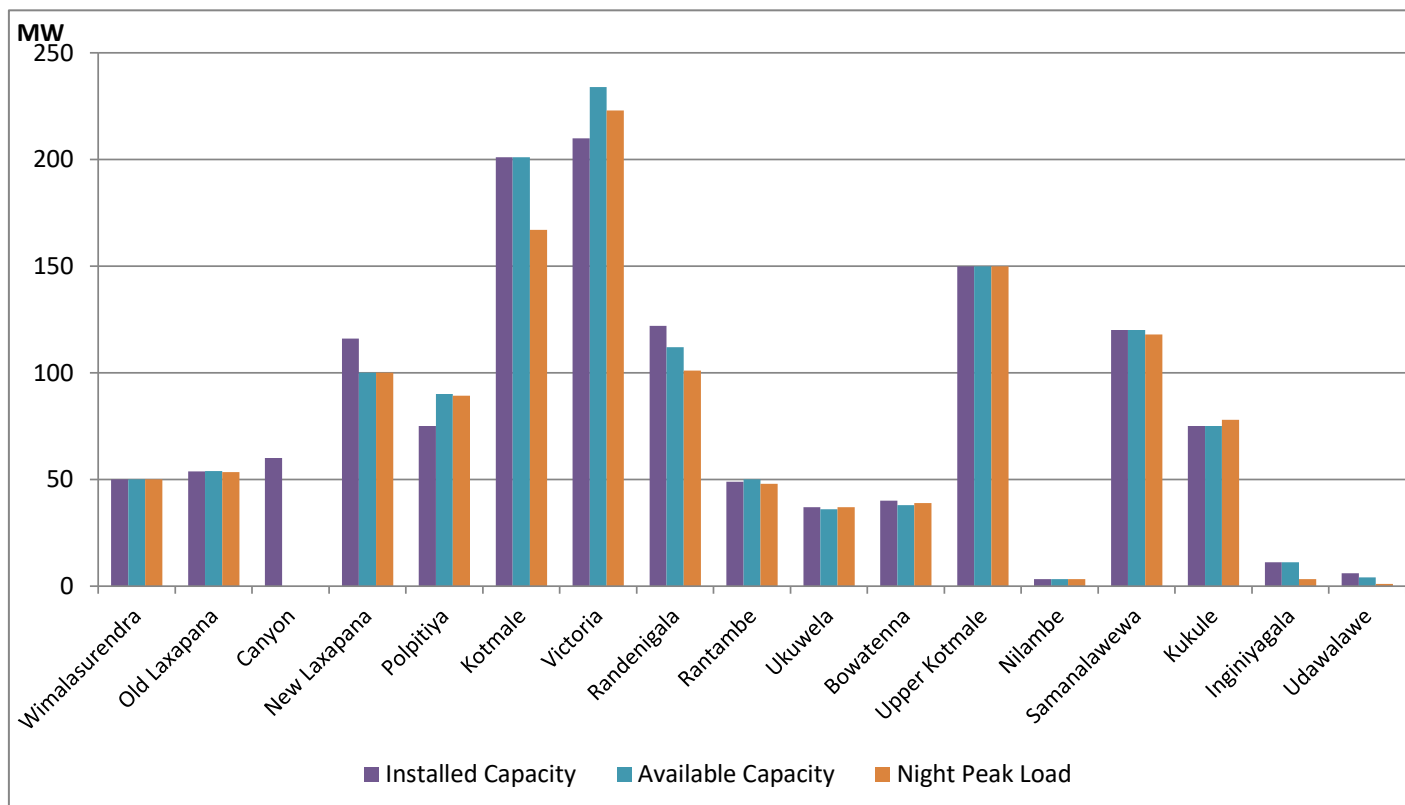


Note- Available Generation is estimated based on plant availability at 6.00am on

August 11, 2021

## Major Hydro Plant Loading at Night Peak

August 10, 2021



Note- Plant availability is recorded at 6.00 am on

August 11, 2021

Summary of Major Plant performance

Plant	Installed Capacity	Plant Availability	Night peak Load	Plant Dispatch
	(MW)	(MW)	(MW)	(GWh)
Wimalasurendra	50.00	50.00	50.00	350.00
Old Laxapana	53.80	54.00	53.40	1,254.00
Canyon	60.00	-	-	-
New Laxapana	116.00	100.00	100.00	2,281.00
Polpitiya	75.00	90.00	89.30	2,035.00
Kotmale	201.00	201.00	167.00	2,180.00
Victoria	210.00	234.00	223.00	3,703.00
Randenigala	122.00	112.00	101.00	849.00
Rantambe	49.00	50.00	48.00	321.00
Ukuwela	37.00	36.00	37.00	699.00
Bowatenna	40.00	38.00	39.00	306.00
Upper Kotmale	150.00	150.00	150.00	1,109.00
Nilambe	3.20	3.20	3.20	56.00
Samanalawewa	120.00	120.00	118.00	775.00
Kukule	75.00	75.00	77.90	1,800.00
Inginiyagala	11.25	11.25	3.20	47.00
Udawalawe	6.00	4.00	1.00	41.00
Puttalam Coal I	275.00	270.00	269.00	6,045.00
Puttalam Coal II	275.00	270.00	272.00	6,133.00
Puttalam Coal III	275.00	270.00	270.00	6,161.00
KPS Small GTs	65.20	36.00	-	-
KPS GT 7	113.00	115.00	-	-
KCCP	161.00	-	-	-
Sapugaskanda A	69.60	50.00	51.00	889.00
Sapugaskanda B	69.60	45.00	44.00	825.00
Uthura Janani	26.01	16.00	-	-
Barge CEB	60.00	60.00	61.00	375.00
CEB-Thulhiriya	10.00	8.00	-	-
CEB-Kolonnawa	20.00	12.80	-	-
CEB-Mathugama	20.00	15.80	-	-
AES - Kelanitissa	163.00	163.00	-	-
Westcoast	270.00	270.00	-	-
Vpower-Valach.	24.00	24.00	-	-
Solar	58.00		-	293.00
Wind	128.00		115.10	2,654.00
MH and BM	394.00		117.70	Not available
Total without NCRE	3,538.46	2,954.05		

Night peak load of MH and BM only include loading of Minihydro plants of total capacity MW

174

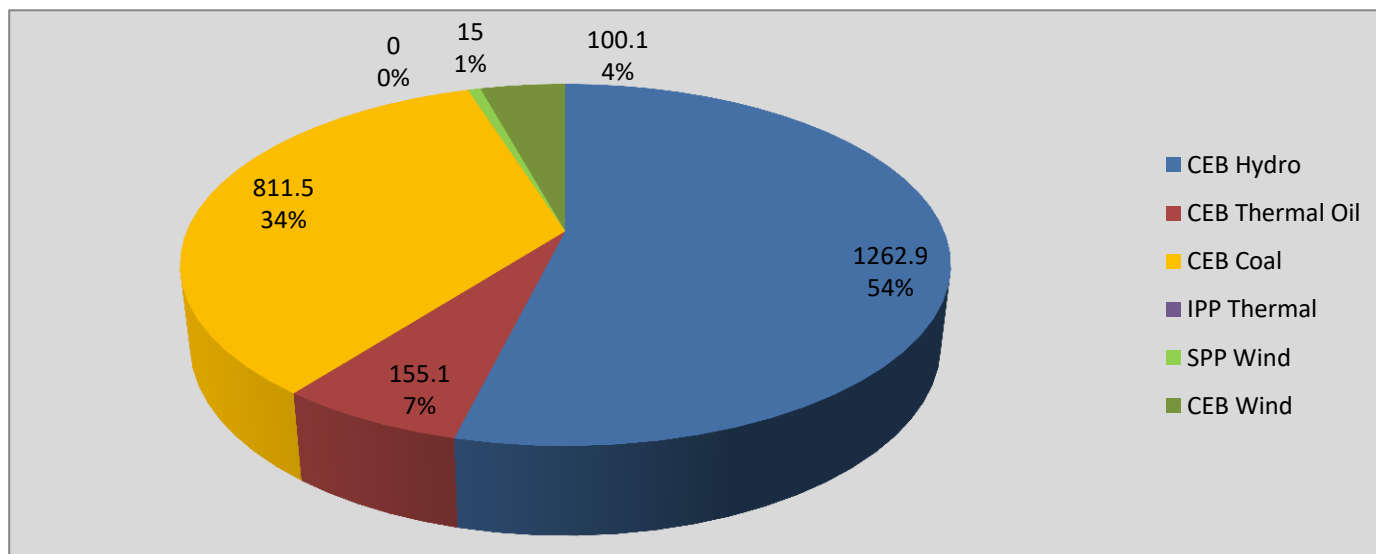
Installed capacity of Solar, wind, Mini-hydro and Biomass plants are as of end of December 2019

Plant availability is the availability recorded at 6 am on

August 11, 2021

## Contribution to the Night Peak in MW

August 10, 2021



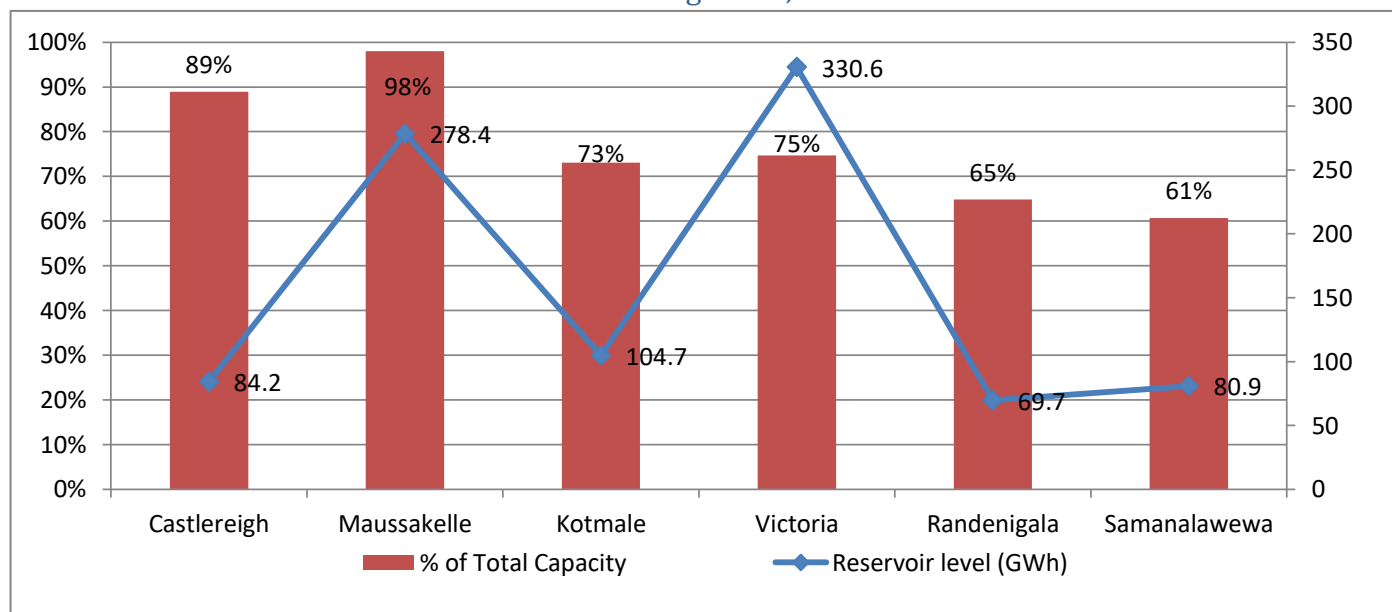
Night Peak\* 2,344.6 MW  
 Day Peak 1,986.9 MW  
 Minimum Demand 1,232.1 MW

Notes: \*The above chart pattern and night peak figure is presented excluding the contribution of Moragahakanda, other minihydro and biomass power plants

\*\*Day peak and Minimum demand includes the contribution from Moragahakanda, wind and solar plants

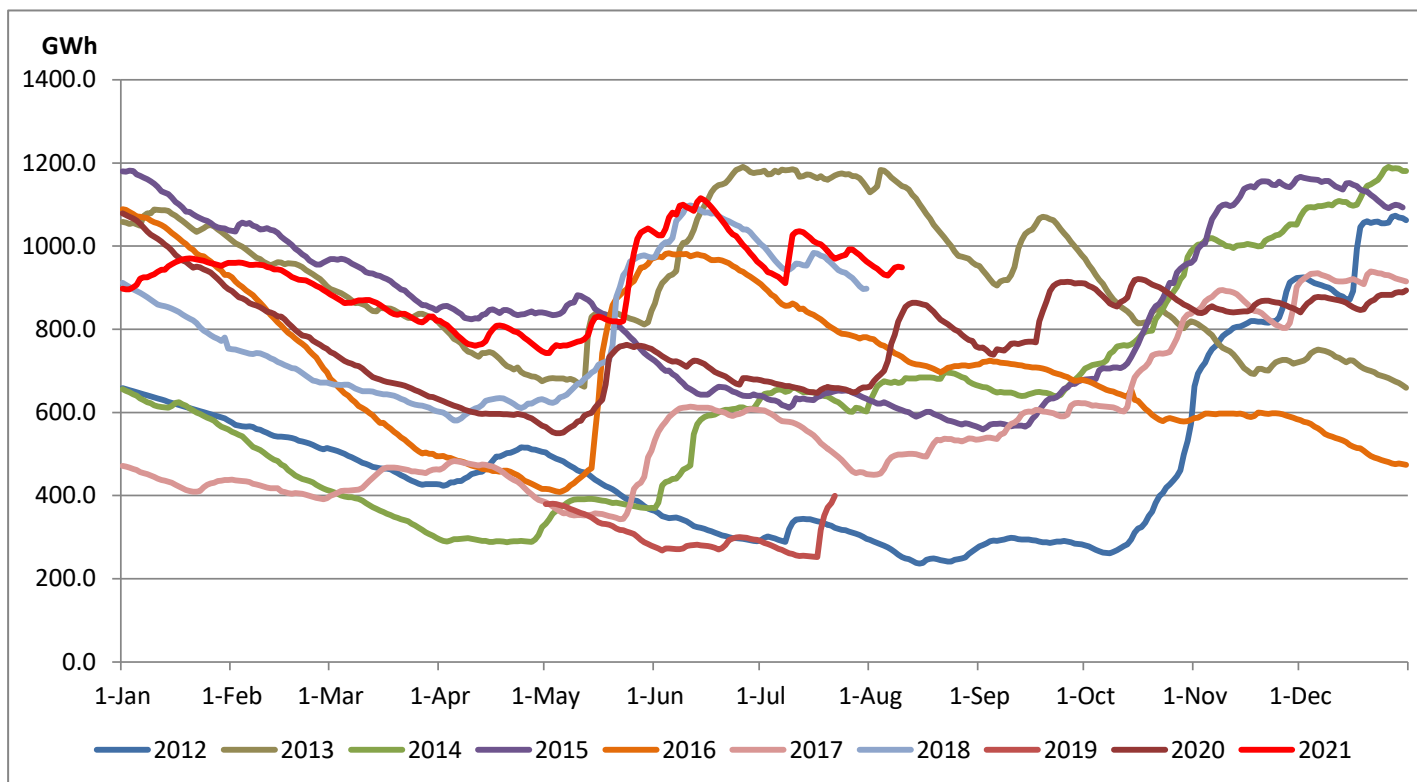
\* in addition to the night peak figure presented above, Kerawalapitiya waste heat plant, other MiniHydro and Biomass Plants of installed capacity 174.00 MW has recorded total 117.70 MW at night peak

## Reservoir Levels - as at 06.00 Hr on August 11, 2021



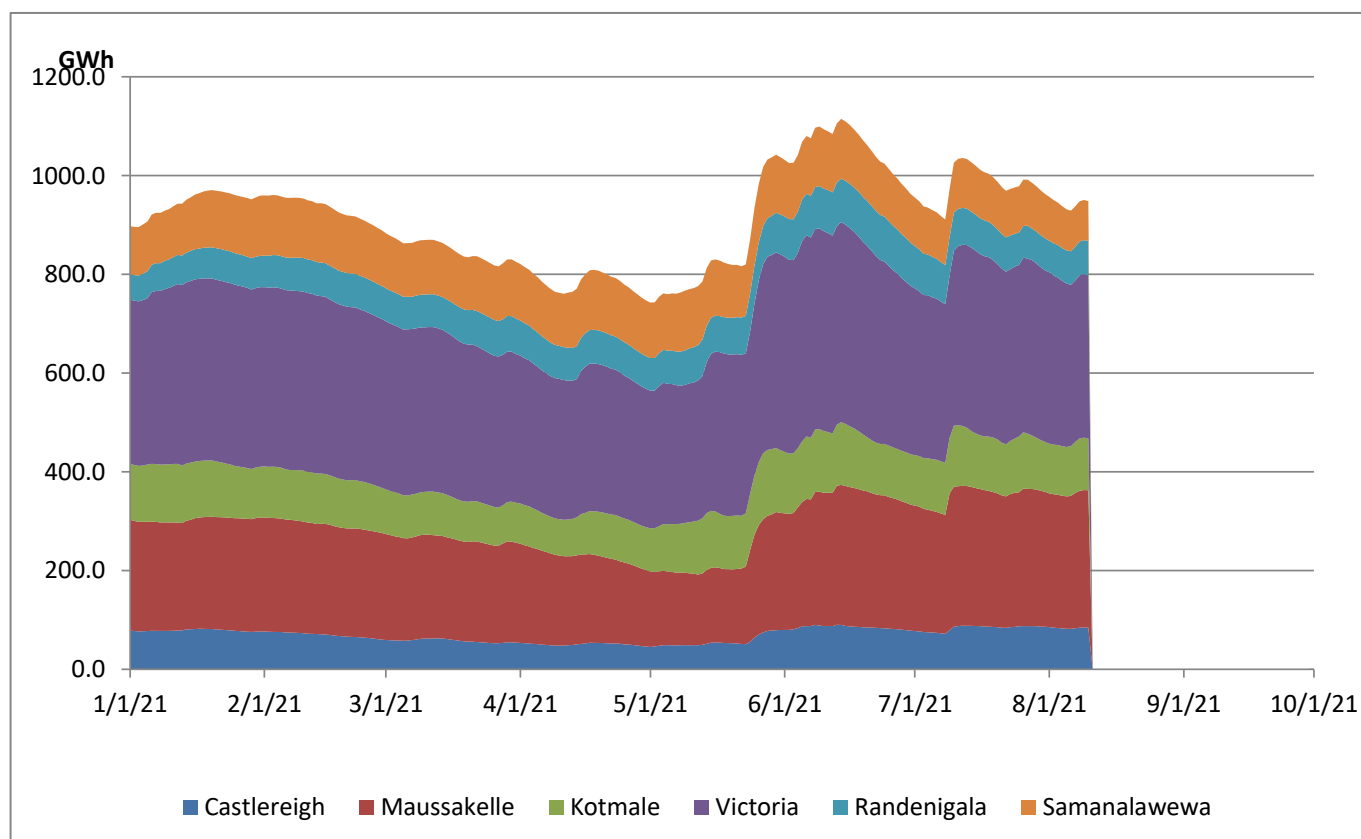
Total Reservoir Level(GWh) 948.5  
 % of Total capacity 78.7%

## Comparison of Total Reservoir Storage Levels with Past Years



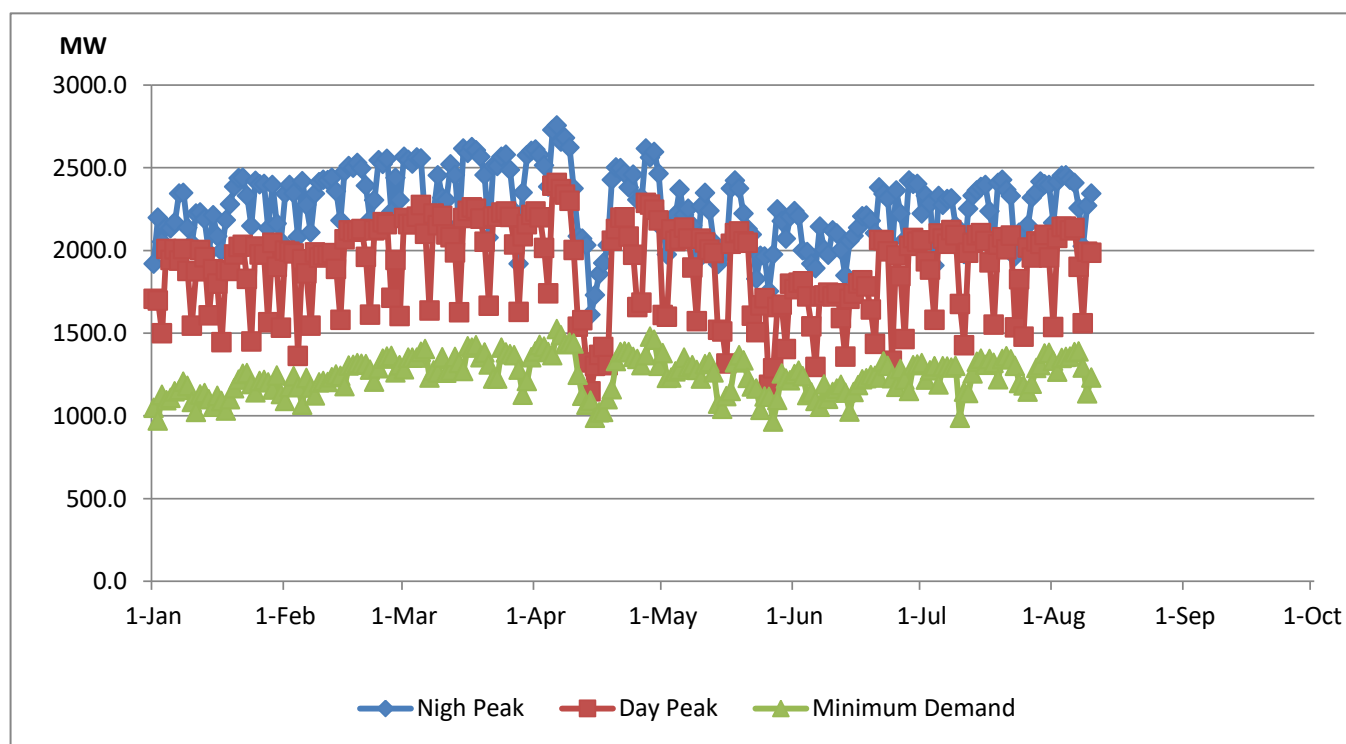
Data for 2018 and 2019 are only available for part of year.

## Variation of Major Hydro Reservoir Levels in the current year (GWh)





## Variation of Demand during the current year



### Notes:

The night peak is excluding the contribution from Minihydro and biomass power plants

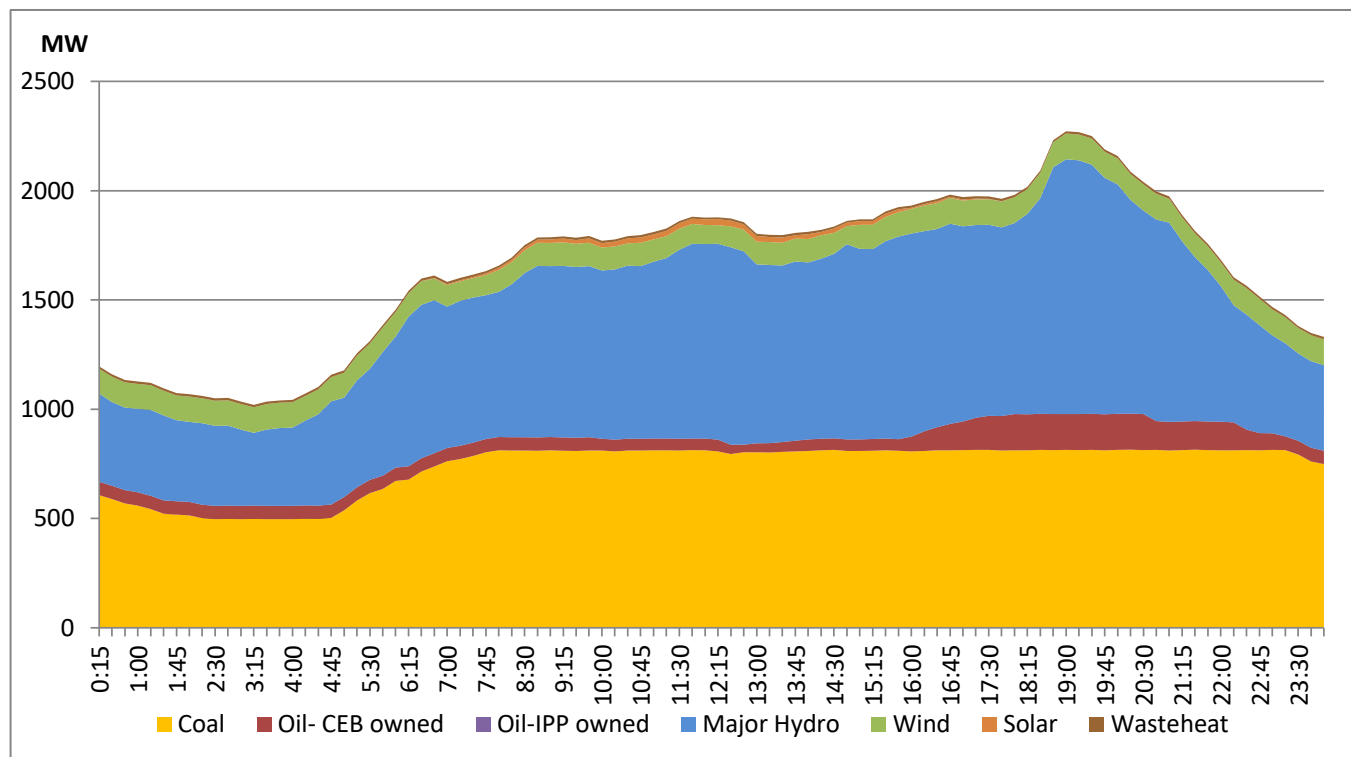
Day peak and minimum demand graphs includes the contribution from Moragahakanda power plant

All graphs include the contribution from telemetered solar and wind plants

## Daily Load Curve of the Previous day

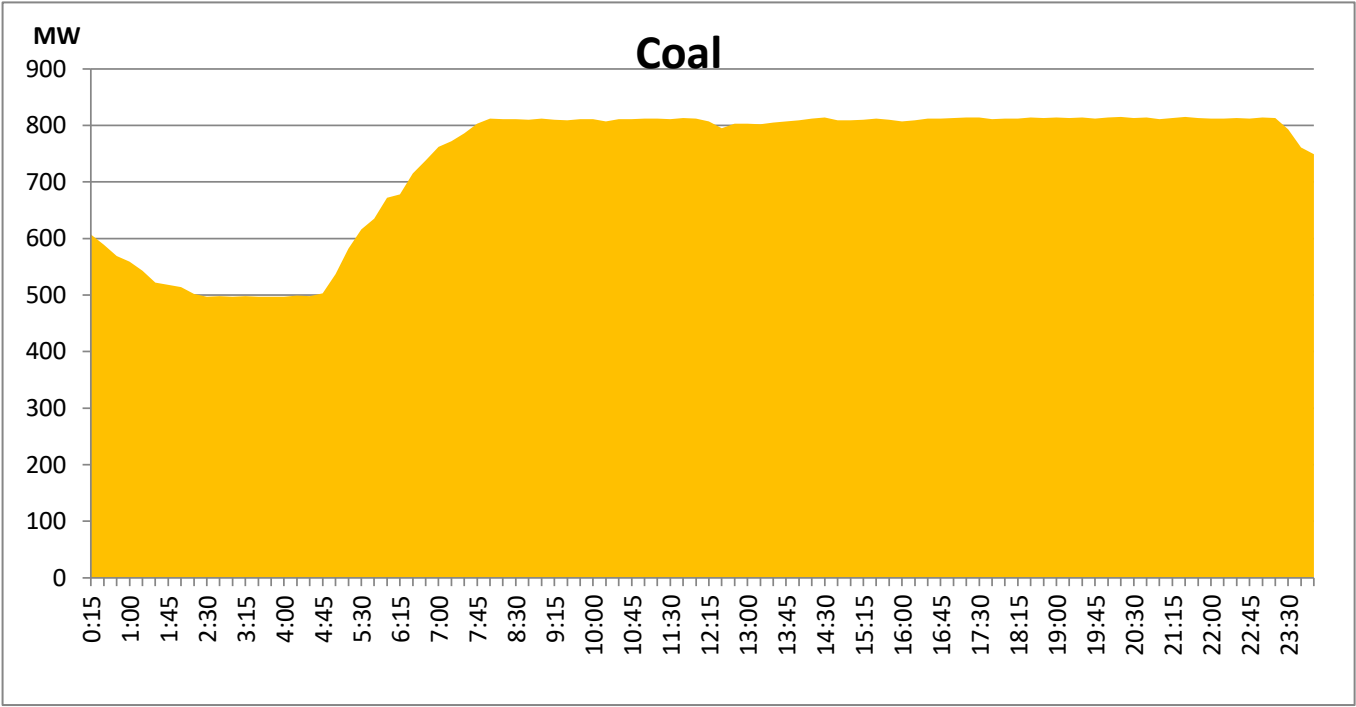
August 9, 2021

Solar and wind data is based on Telemetered Power Stations only



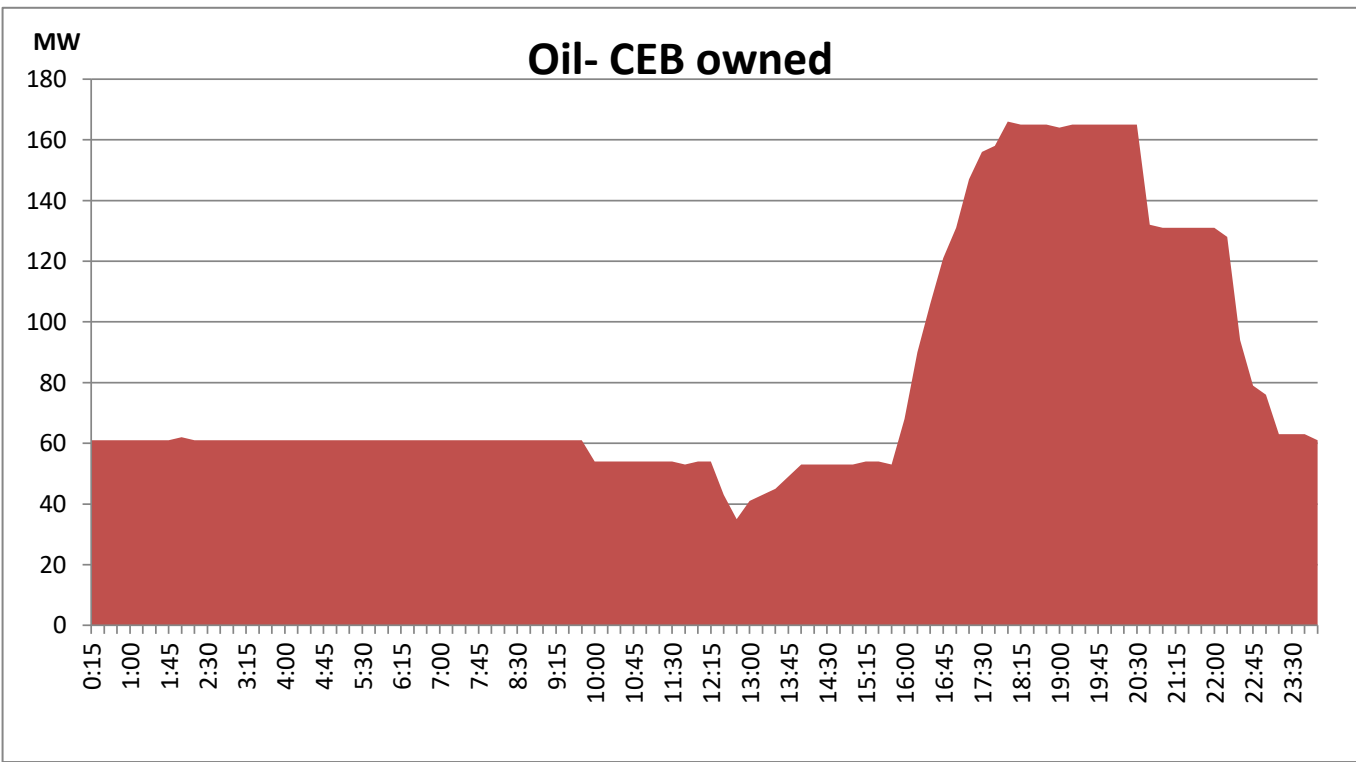
Coal Generation during the Previous day

August 9, 2021



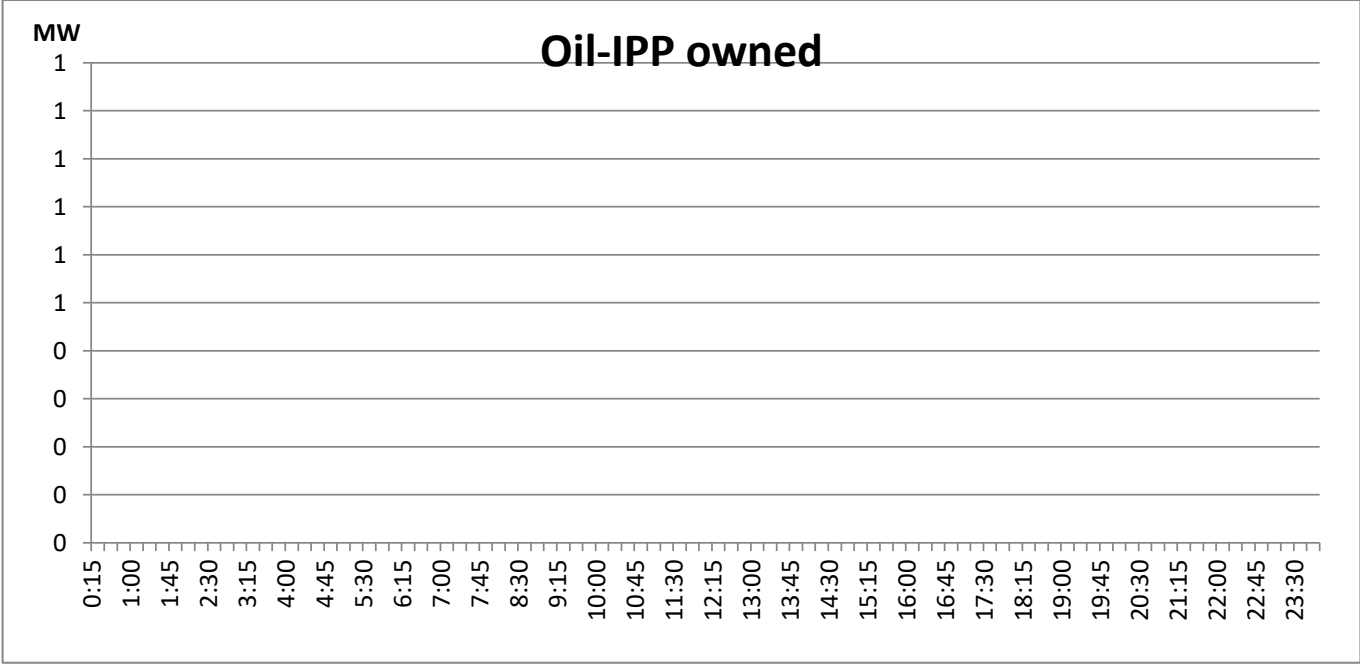
CEB Oil Plant Generation during the Previous day

August 9, 2021



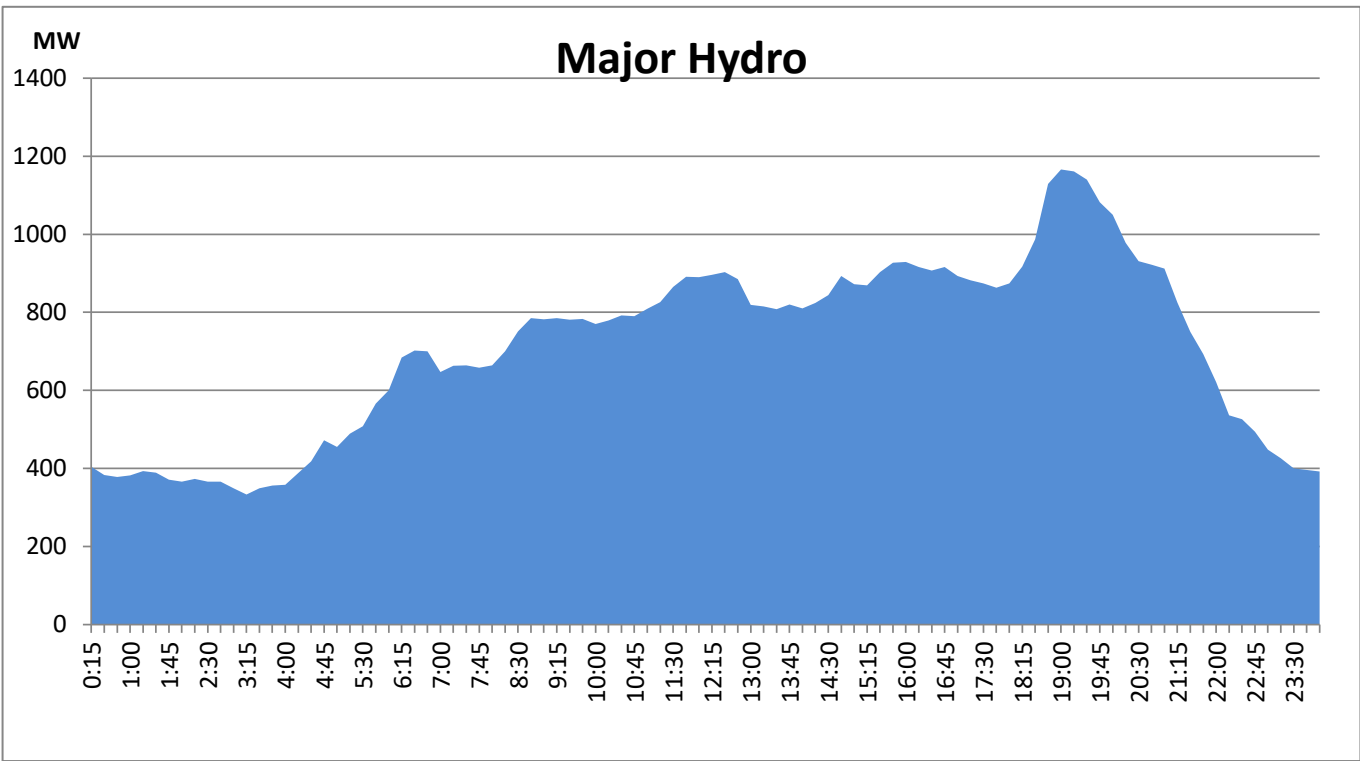
IPP Oil Plant Generation during the Previous day

August 9, 2021



Major Hydro Generation during the Previous day

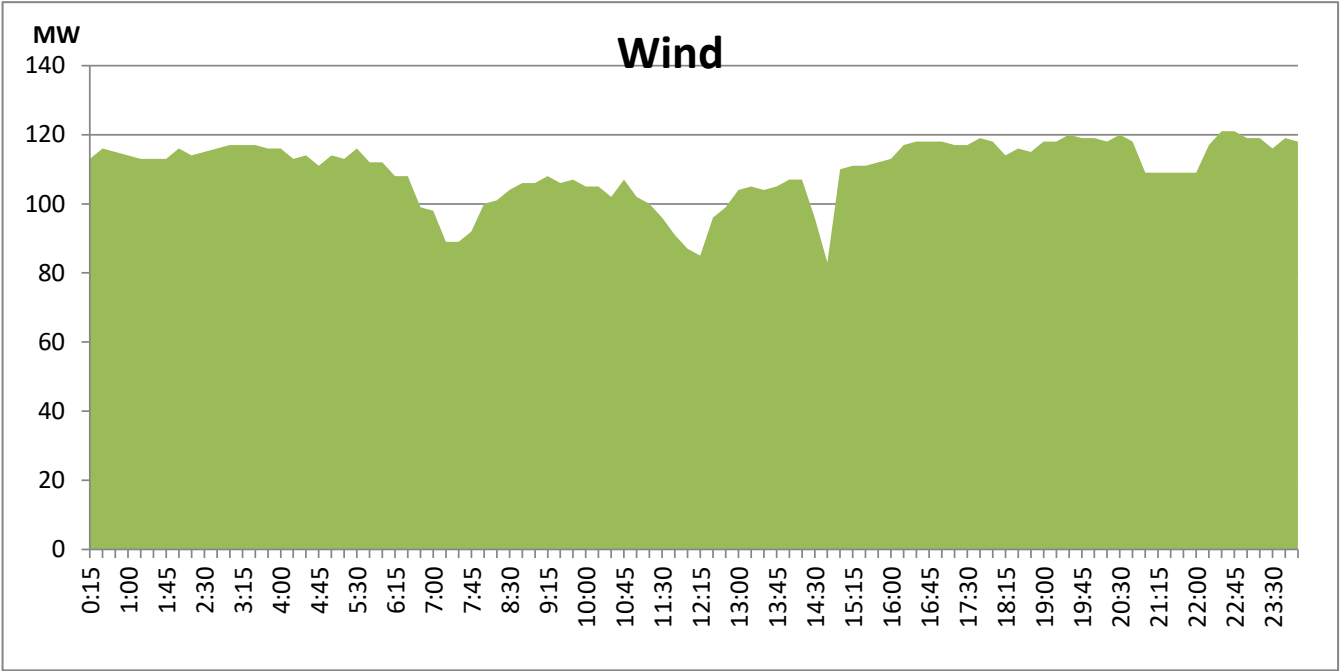
August 9, 2021



Wind Generation during the Previous day

August 9, 2021

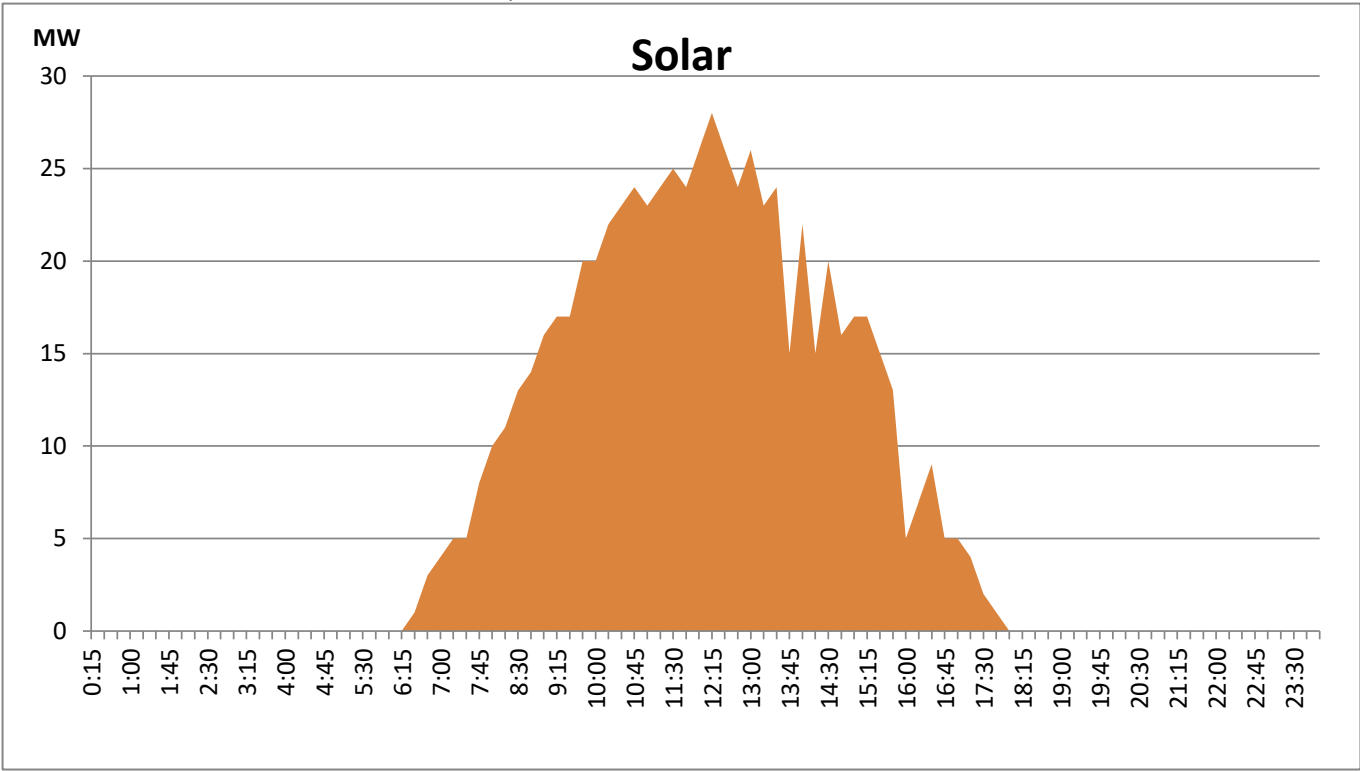
Based on Telemetered Power Stations only



Solar Generation during the Previous day

August 9, 2021

Based on Telemetered Power Stations only



## Thermal Plant Fuel types

Power Station	Primary Fuel
CEB Thermal	
Sapugaskanda 1	Heavy Fuel
Sapugaskanda 2	Heavy Fuel
Kelanitissa Small Gas Turbines	Auto Diesel
GT 7 - Kelanitissa	Auto Diesel
Kelanitissa CCY	Naptha & Diesel
Lakvijaya 1	Coal
Lakvijaya 2	Coal
Lakvijaya 3	Coal
Uthuru Janani	Heavy Fuel
Barge CEB	Furnace Oil

Power Station	Primary Fuel
Private Thermal	
Sojitz -	Auto Diesel
West Coast	Low Sulphur Furnace oil

### Major Incidents during the day -as reported by CEB morning of

**August 11, 2021**

1) Laxapana pond spilling started at 09:35 hrs and stopped at 13:13 hrs. Laxapana pond spilling again started at 21:15 hrs and stopped 22:55 hrs.

2) Bolawatta T/F-02 and T/F-03 tripped at 08:21 hrs causing Bolawatta feeders to be dead (T/F-01 was released for planned maintenance). Bolawatta T/F-02 & 03 along with affected feeders normalized at 09:05 hrs.

3) N'Chilaw-Veyangoda-01 tripped at 12:53 hrs from both ends due to operation of differential protection. Cct restored at 14:05hrs.