

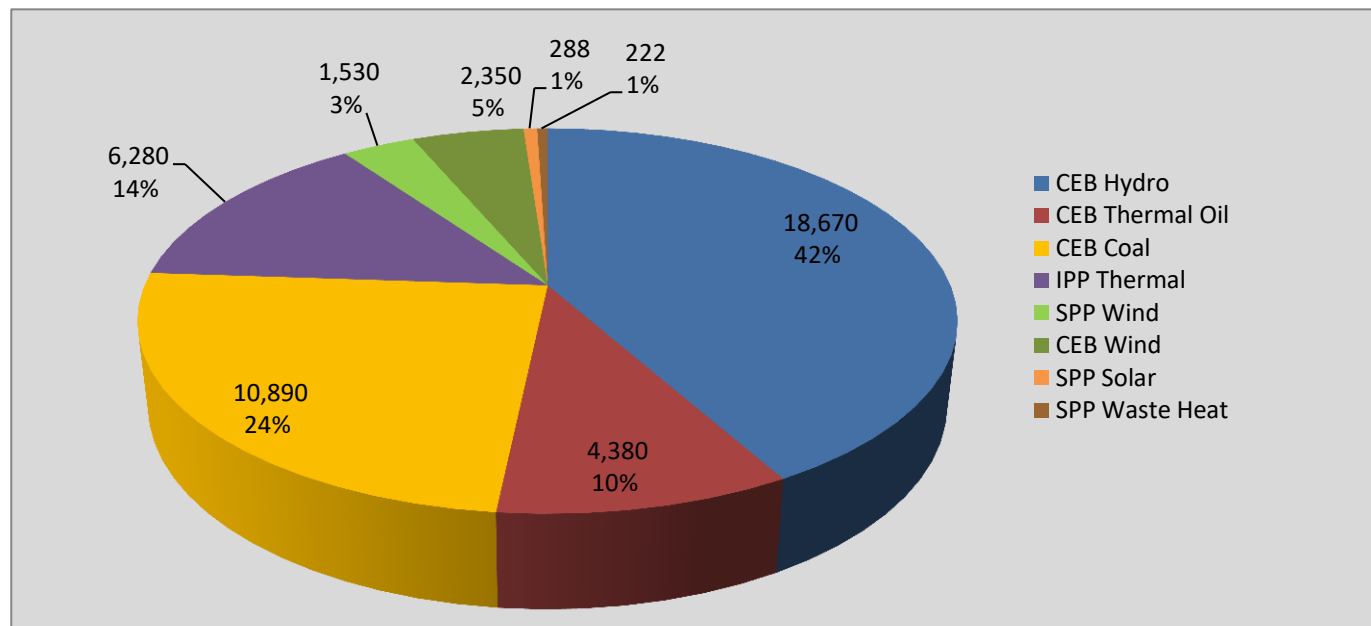
Generation and Reservoirs Statistics

July 22, 2021



PUBLIC UTILITIES COMMISSION OF SRI LANKA

Daily Generation Mix in MWh



Total Generation

44,620 MWh

Note: Minihydro and Biomass and waste heat (except 10 MW WH plant at Kerawalapitiya) power plant energy is not included

Cumulative Dispatch

Note: Minihydro and Biomass and waste heat (except 10 MW WH plant at Kerawalapitiya) power plant energy is not included

For Current Month

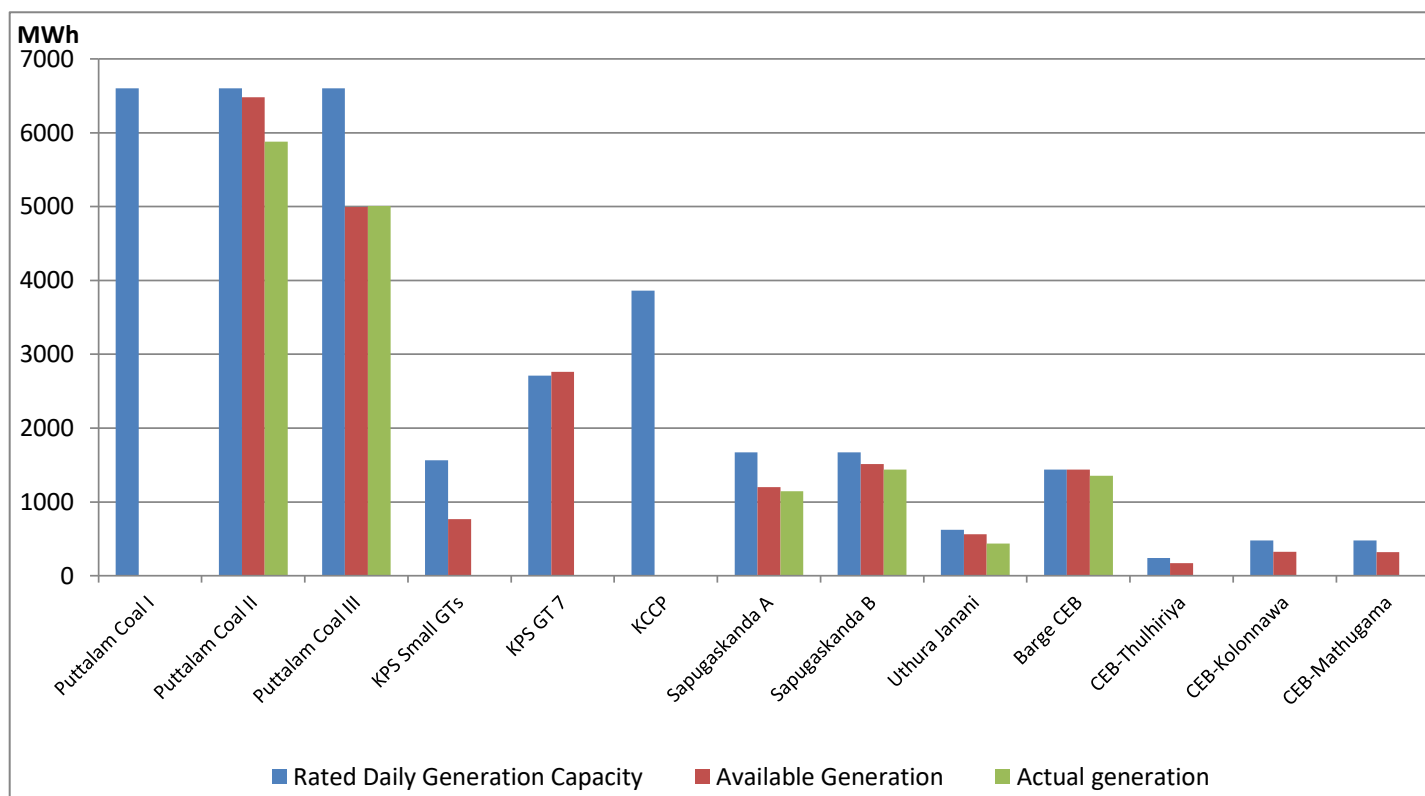
Category	Dispatch (GWh)	
CEB Hydro	410.2	45.49%
CEB Thermal Oil	84.5	9.38%
CEB Coal	260.3	28.87%
IPP Thermal	85.9	9.52%
SPP Wind	17.7	1.96%
CEB Wind	32.0	3.54%
SPP Solar	6.2	0.69%
SPP Waste Heat	4.8	0.54%
Total	901.5	

For Current Year

Category	Dispatch (GWh)	
CEB Hydro	2,568.8	31.49%
CEB Thermal Oil	799.3	9.80%
CEB Coal	3,355.3	41.14%
IPP Thermal	1,140.4	13.98%
SPP Wind	94.1	1.15%
CEB Wind	131.6	1.61%
SPP Solar	54.0	0.66%
SPP Waste Heat	13.0	0.16%
Total	8,156.5	

CEB owned Thermal Plant Dispatch

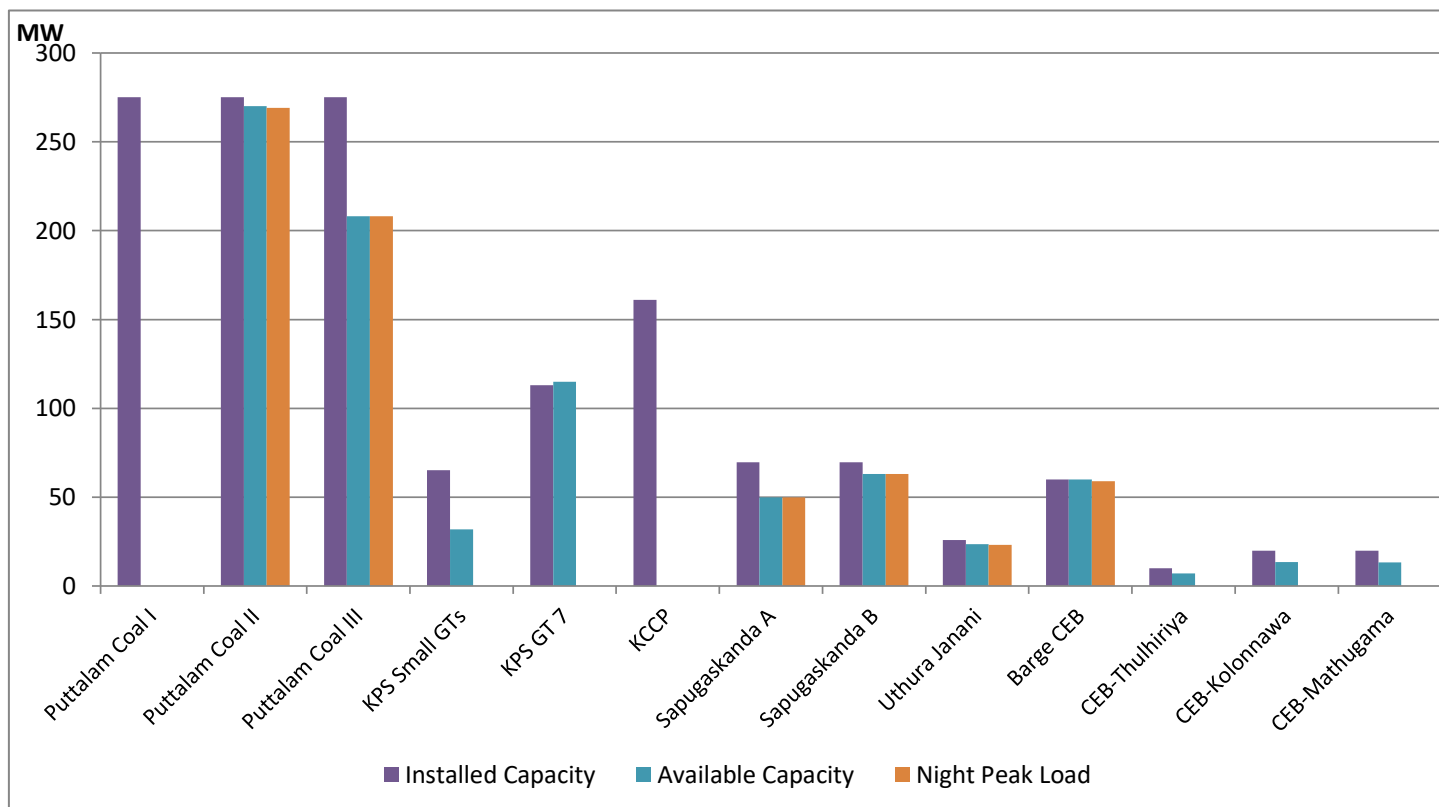
July 22, 2021



Available Generation is estimated based on plant availability at 6.00am on

July 23, 2021

CEB owned Thermal Plant Loading at the Night Peak



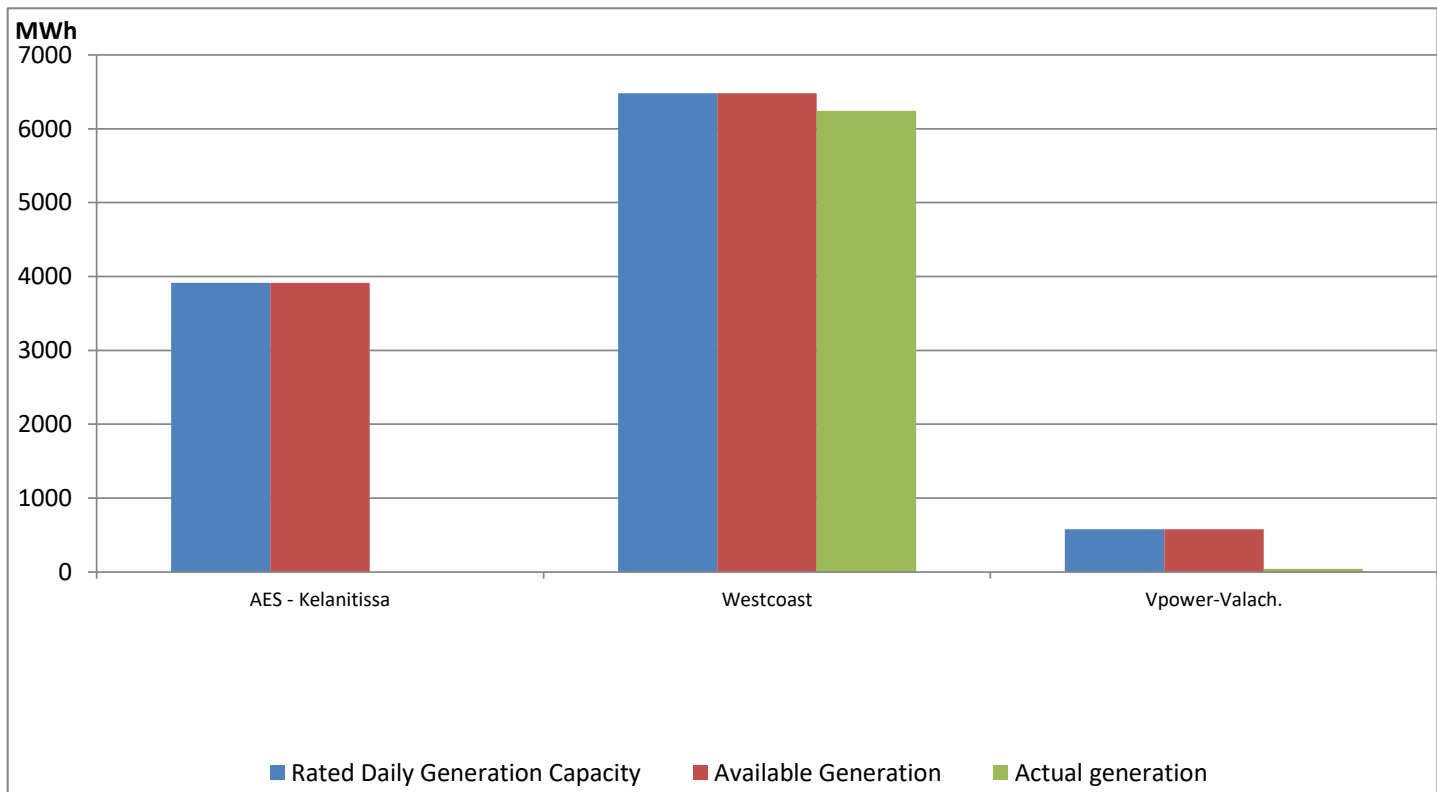
Note- Plant availability is recorded at 6.00 am on

July 23, 2021

IPP owned Thermal Plant Dispatch

July 22, 2021

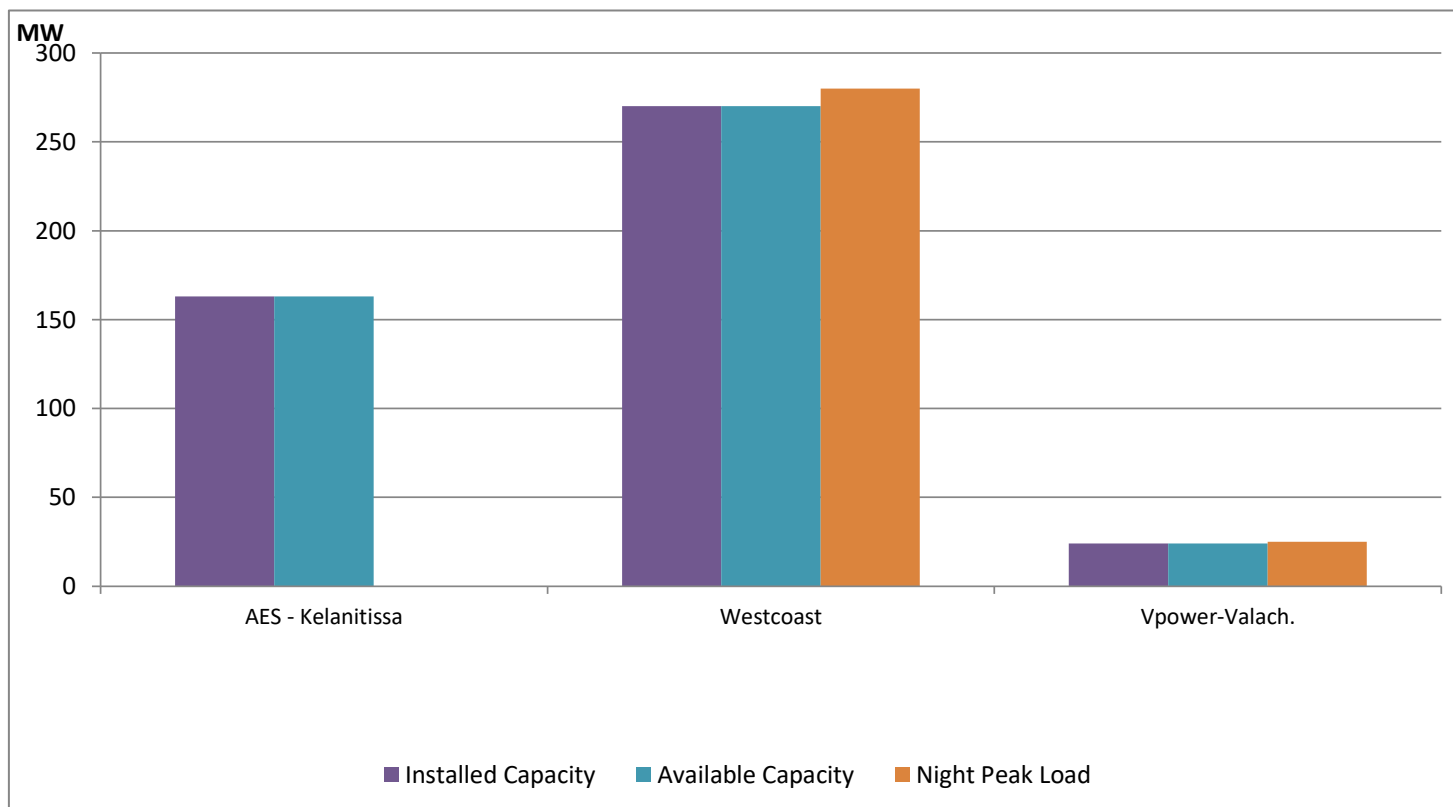
ACE Embilipitiya, ACE Matara, Asia Power, V Power Pallekale, Vpower Galle, V Power Horana, Vpower Hambantota and Altaqa Mahiyanganaya are not available due to expiration of PPAs



Available Generation is estimated based on plant availability at 6.00am on

July 23, 2021

IPP owned Thermal Plant Loading at the Night Peak

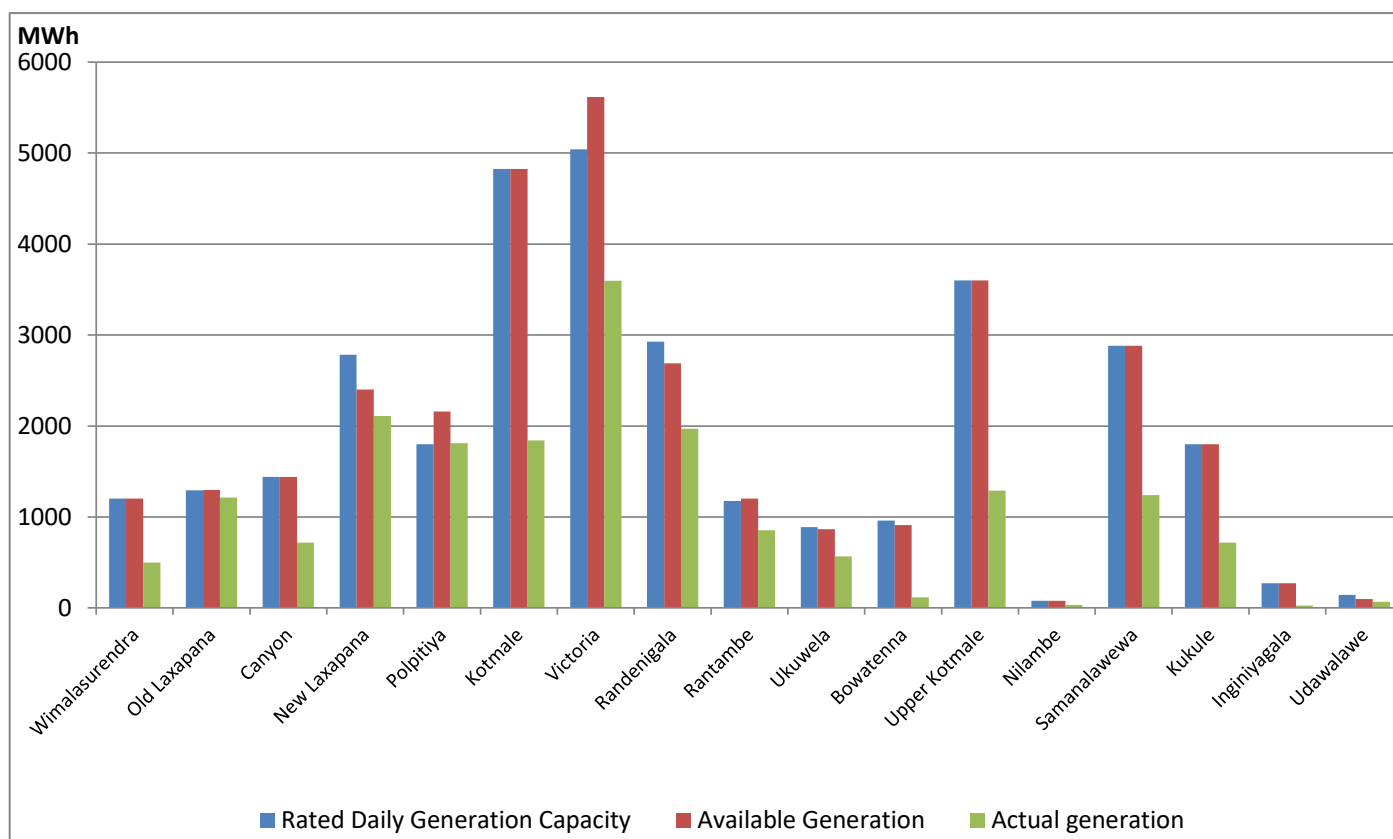


Note- Plant availability is recorded at 6.00 am on

July 23, 2021

Major Hydro Plant Dispatch

July 22, 2021

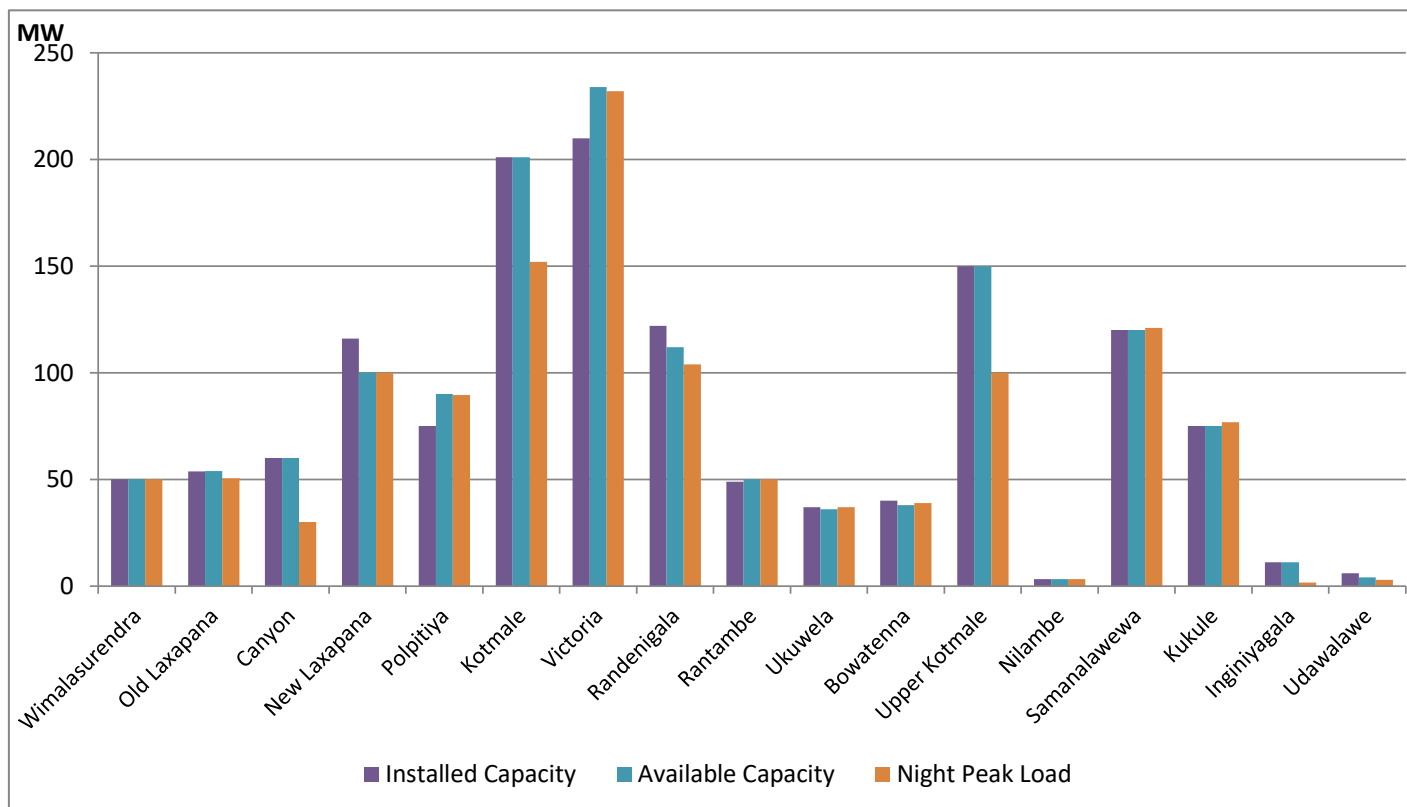


Note- Available Generation is estimated based on plant availability at 6.00am on

July 23, 2021

Major Hydro Plant Loading at Night Peak

July 22, 2021



Note- Plant availability is recorded at 6.00 am on

July 23, 2021

Summary of Major Plant performance

Plant	Installed Capacity	Plant Availability	Night peak Load	Plant Dispatch
	(MW)	(MW)	(MW)	(GWh)
Wimalasurendra	50.00	50.00	50.00	498.00
Old Laxapana	53.80	54.00	50.60	1,215.00
Canyon	60.00	60.00	30.00	717.00
New Laxapana	116.00	100.00	100.00	2,110.00
Polpitiya	75.00	90.00	89.60	1,809.00
Kotmale	201.00	201.00	152.00	1,840.00
Victoria	210.00	234.00	232.00	3,598.00
Randenigala	122.00	112.00	104.00	1,970.00
Rantambe	49.00	50.00	50.00	854.00
Ukuwela	37.00	36.00	37.00	567.00
Bowatenna	40.00	38.00	39.00	118.00
Upper Kotmale	150.00	150.00	100.00	1,290.00
Nilambe	3.20	3.20	3.20	34.00
Samanalawewa	120.00	120.00	121.00	1,240.00
Kukule	75.00	75.00	76.90	719.00
Inginiyagala	11.25	11.25	1.70	26.00
Udawalawe	6.00	4.00	3.00	66.00
Puttalam Coal I	275.00	-	-	-
Puttalam Coal II	275.00	270.00	269.00	5,879.00
Puttalam Coal III	275.00	208.00	208.00	5,010.00
KPS Small GTs	65.20	32.00	-	-
KPS GT 7	113.00	115.00	-	-
KCCP	161.00	-	-	-
Sapugaskanda A	69.60	50.00	50.00	1,145.00
Sapugaskanda B	69.60	63.00	63.00	1,441.00
Uthura Janani	26.01	23.50	23.20	437.00
Barge CEB	60.00	60.00	59.00	1,355.00
CEB-Thulhiriya	10.00	7.20	-	1.00
CEB-Kolonnawa	20.00	13.60	-	1.00
CEB-Mathugama	20.00	13.40	-	-
AES - Kelanitissa	163.00	163.00	-	-
Westcoast	270.00	270.00	280.00	6,243.00
Vpower-Valach.	24.00	24.00	25.00	42.00
Solar	58.00		-	289.00
Wind	128.00		115.60	3,887.00
MH and BM	394.00		93.40	Not available
Total without NCRE	3,538.46	2,701.15		

Night peak load of MH and BM only include loading of Minihydro plants of total capacity MW 190

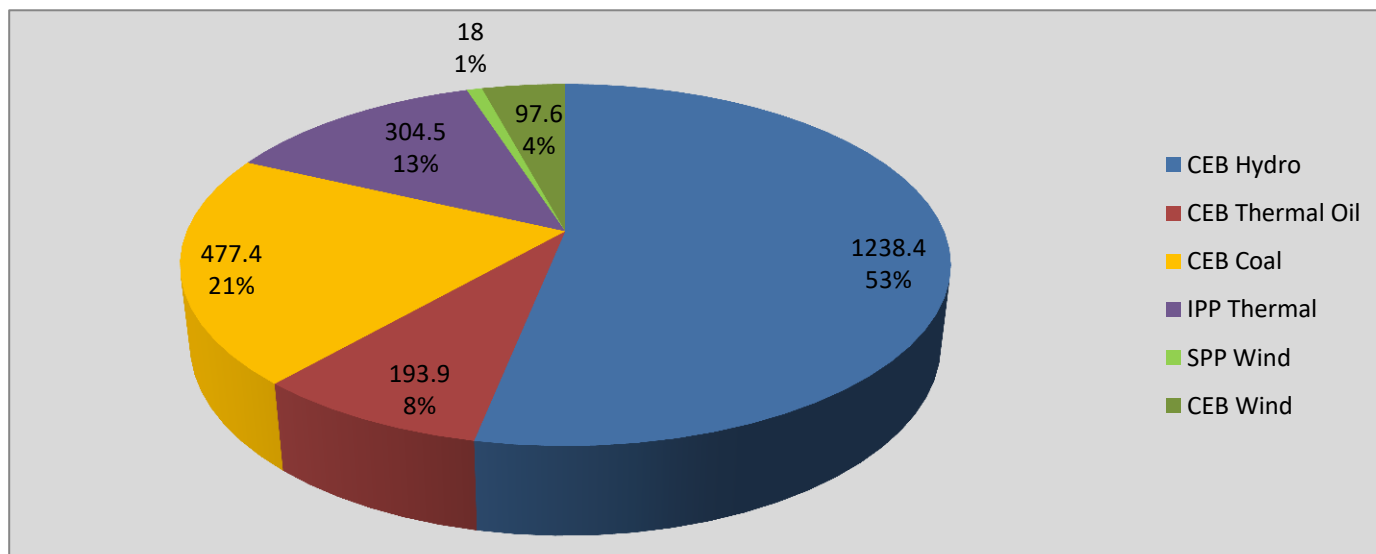
Installed capacity of Solar, wind, Mini-hydro and Biomass plants are as of end of December 2019

Plant availability is the availability recorded at 6 am on

July 23, 2021

Contribution to the Night Peak in MW

July 22, 2021



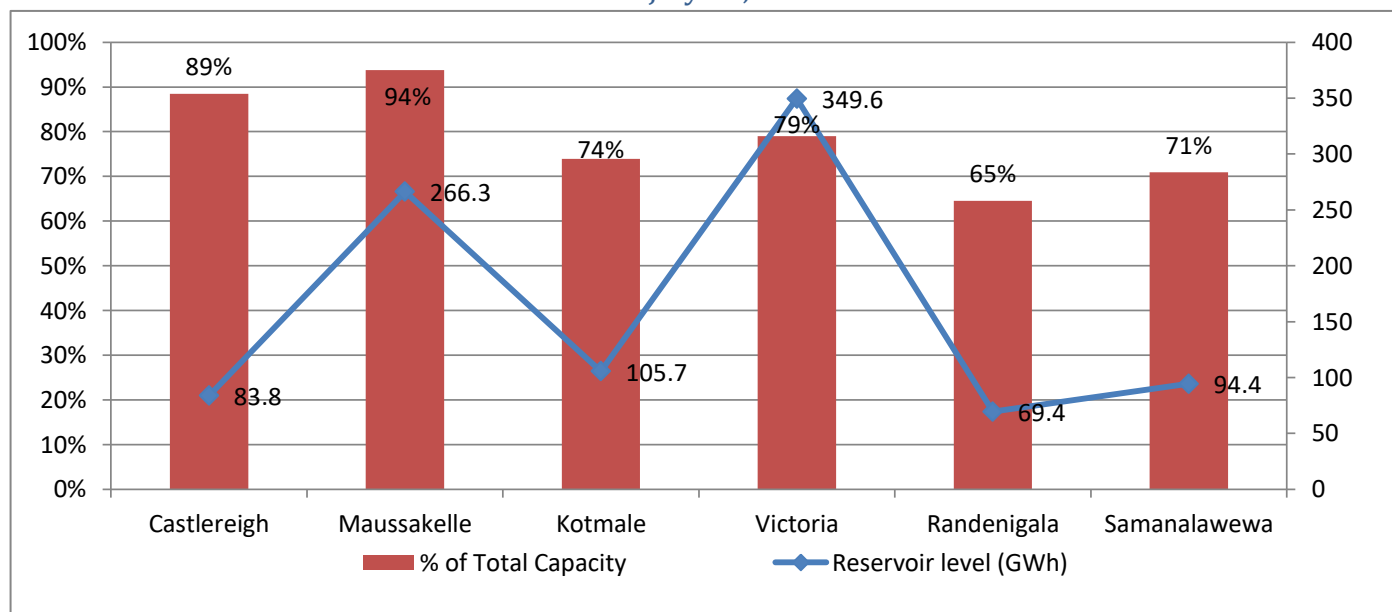
Night Peak* 2,329.8 MW
 Day Peak 2,089.5 MW
 Minimum Demand 1,341.4 MW

Notes: *The above chart pattern and night peak figure is presented excluding the contribution of Moragahakanda, other minihydro and biomass power plants

**Day peak and Minimum demand includes the contribution from Moragahakanda, wind and solar plants

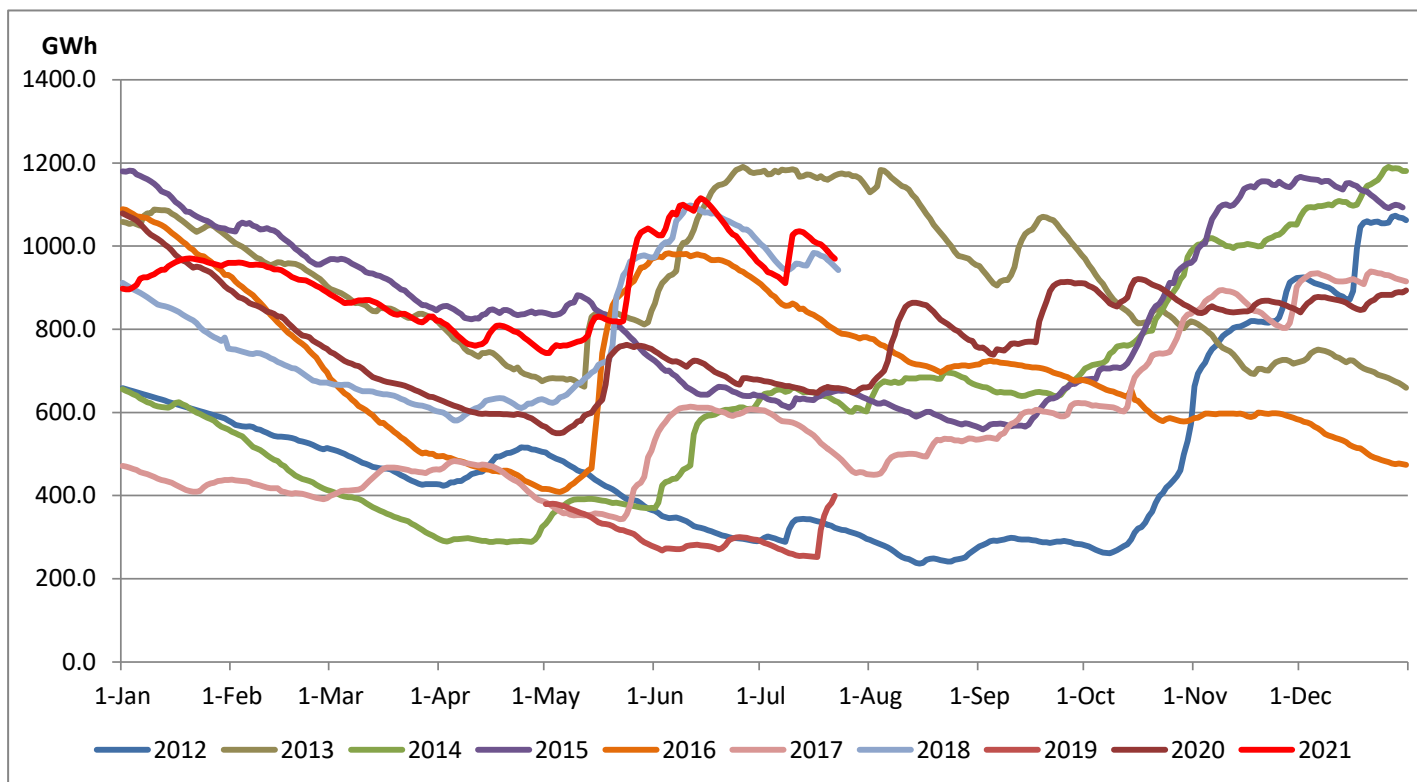
* in addition to the night peak figure presented above, Kerawalapitiya waste heat plant, other MiniHydro and Biomass Plants of installed capacity 190.00 MW has recorded total 93.40 MW at night peak

Reservoir Levels - as at 06.00 Hr on July 23, 2021



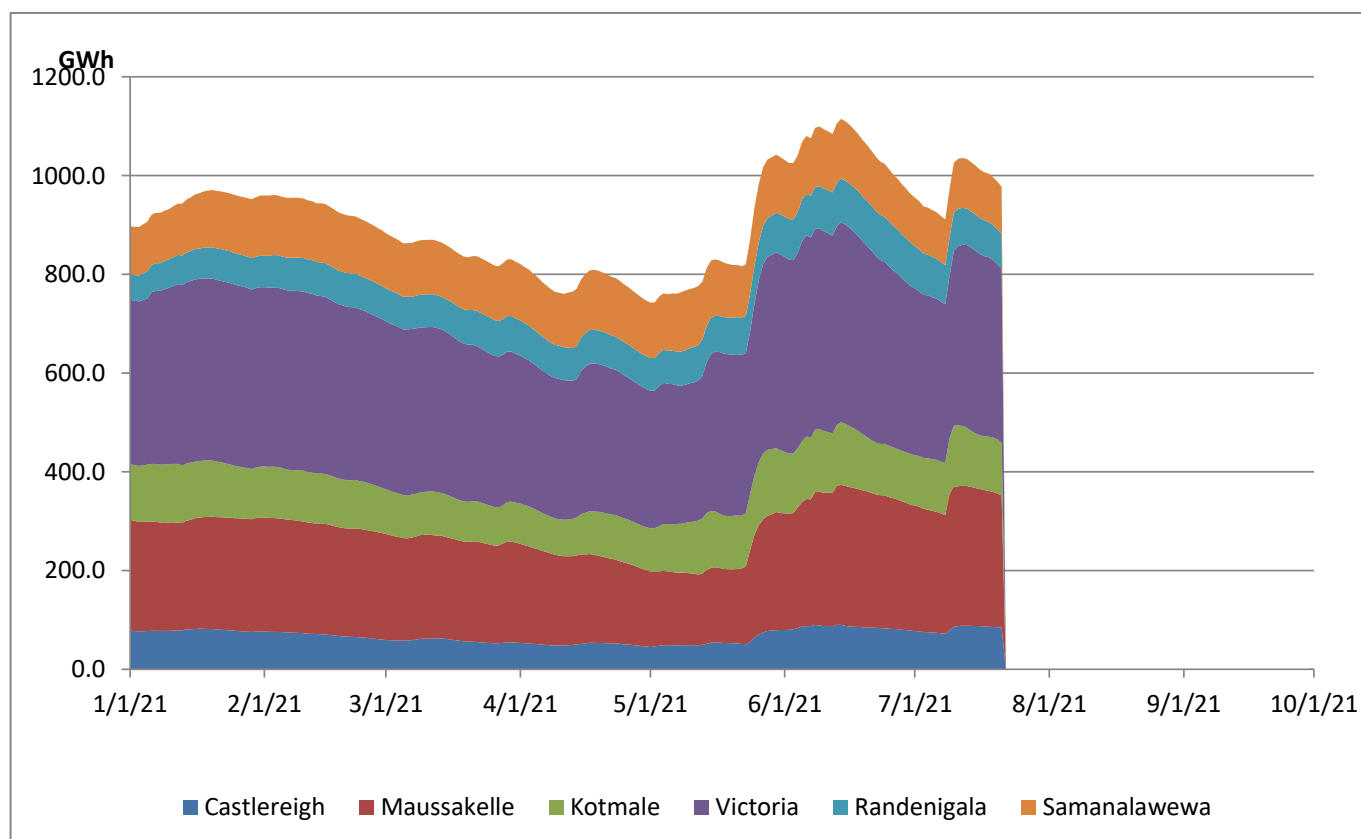
Total Reservoir Level(GWh) 969.2
 % of Total capacity 0.4%

Comparison of Total Reservoir Storage Levels with Past Years

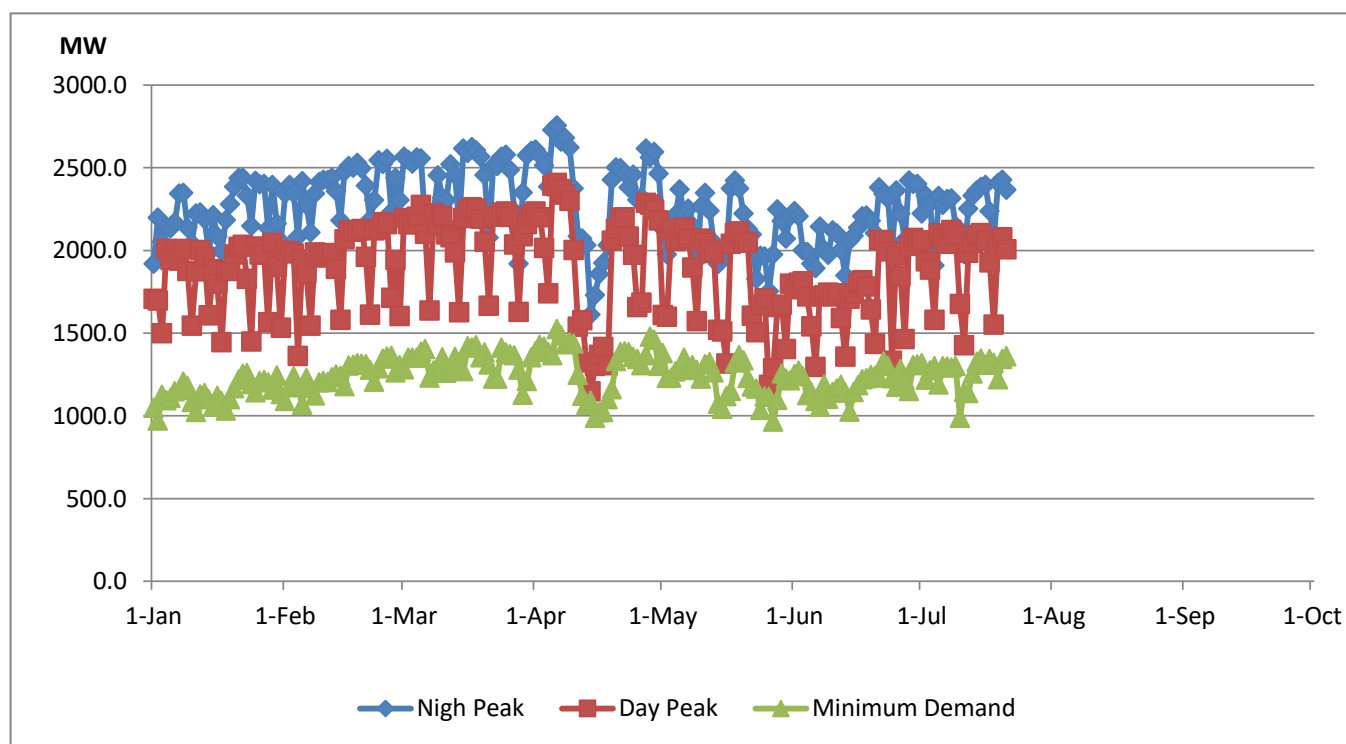


Data for 2018 and 2019 are only available for part of year.

Variation of Major Hydro Reservoir Levels in the current year (GWh)



Variation of Demand during the current year



Notes:

The night peak is excluding the contribution from Minihydro and biomass power plants

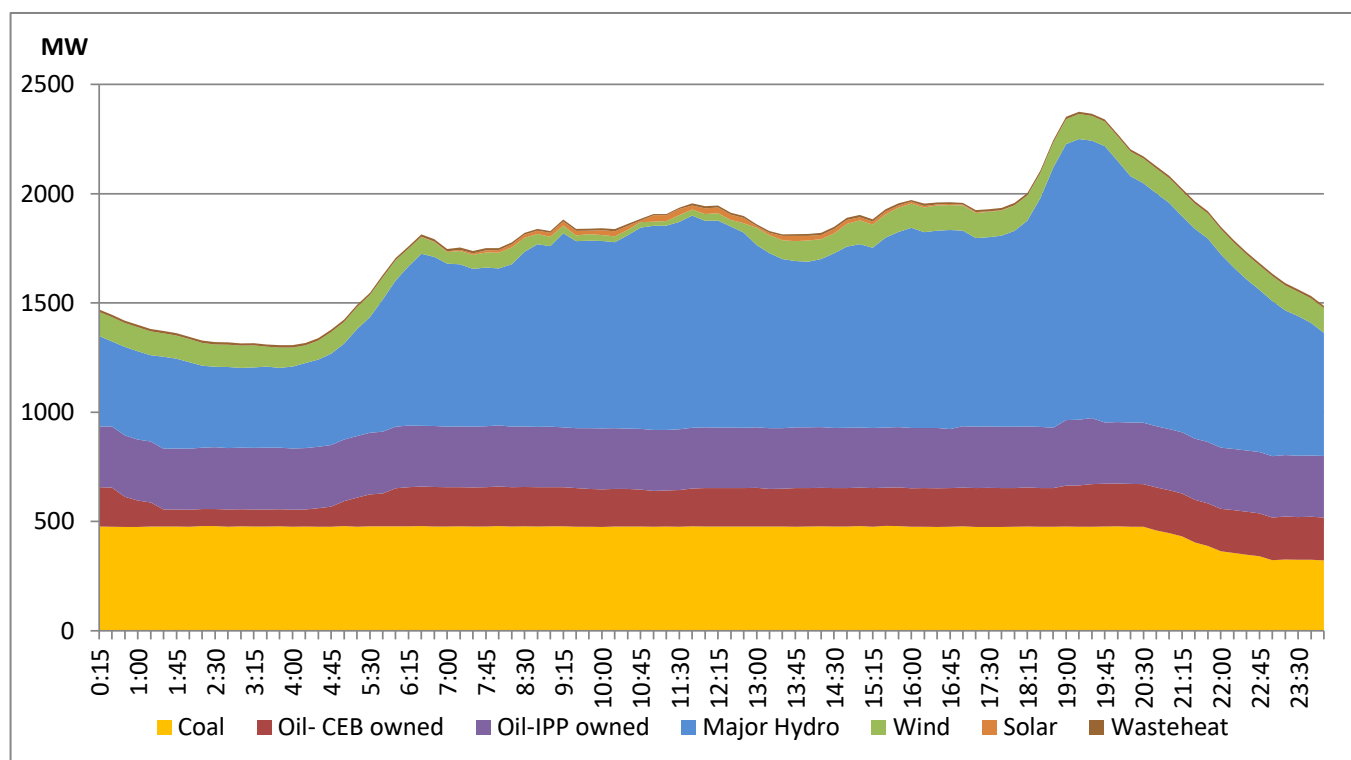
Day peak and minimum demand graphs includes the contribution from Moragahakanda power plant

All graphs include the contribution from telemetered solar and wind plants

Daily Load Curve of the Previous day

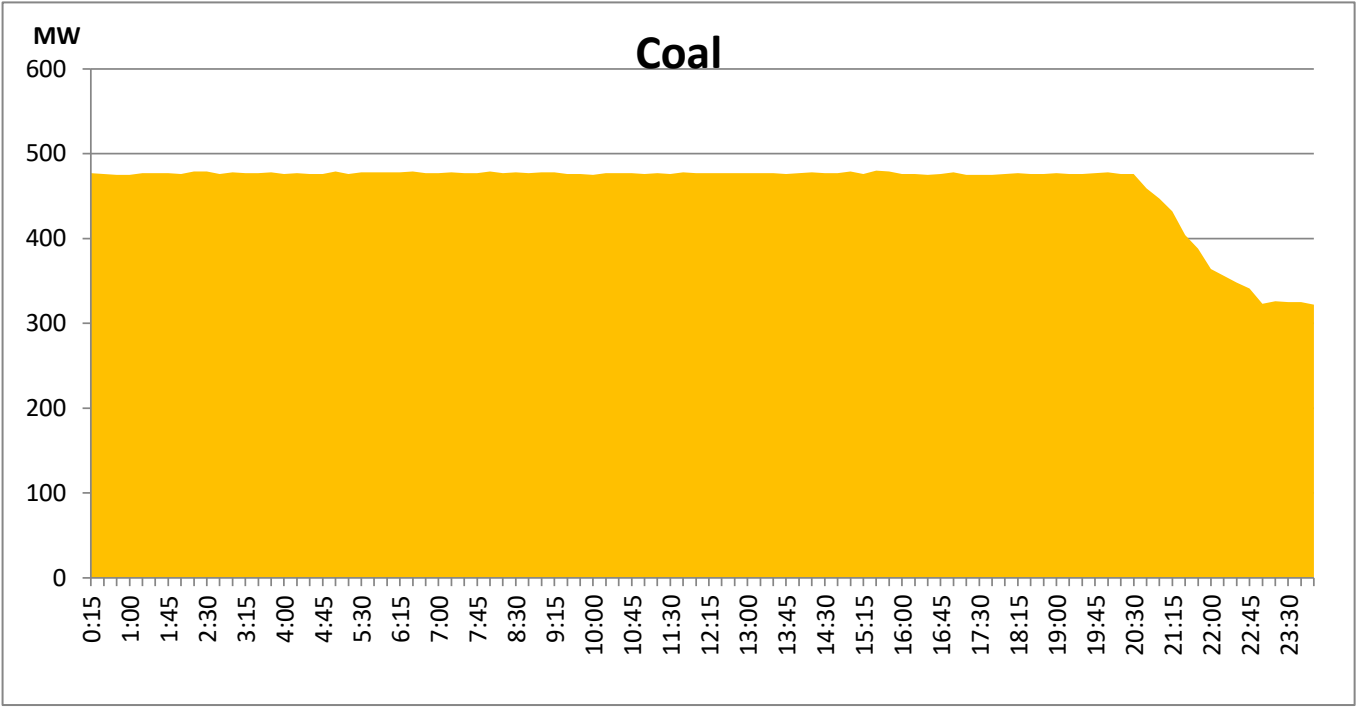
July 21, 2021

Solar and wind data is based on Telemetered Power Stations only



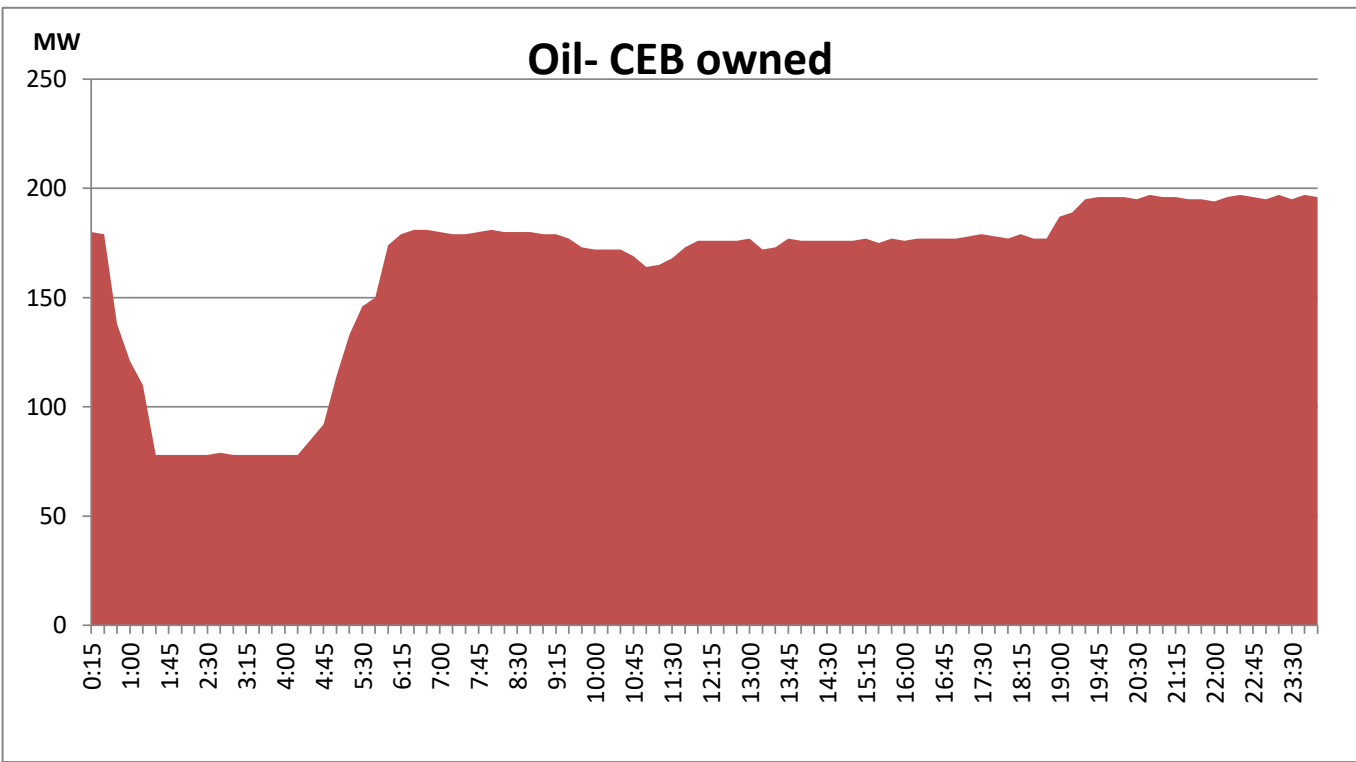
Coal Generation during the Previous day

July 21, 2021



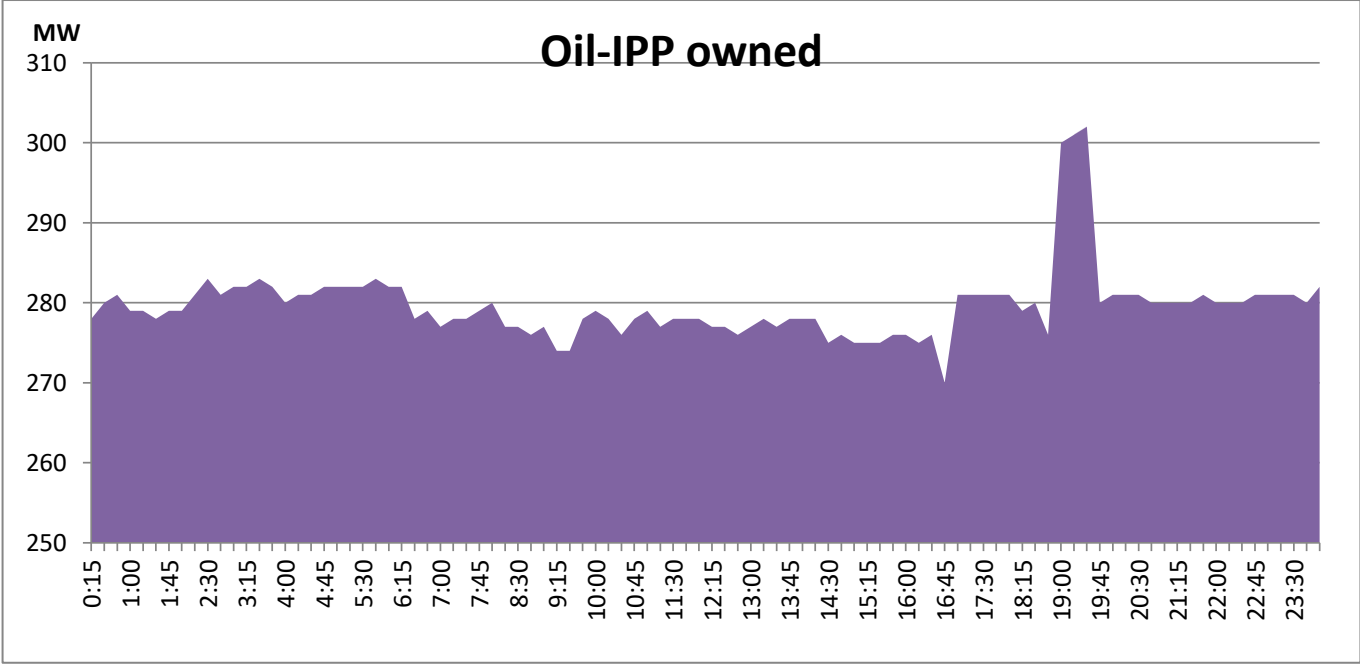
CEB Oil Plant Generation during the Previous day

July 21, 2021



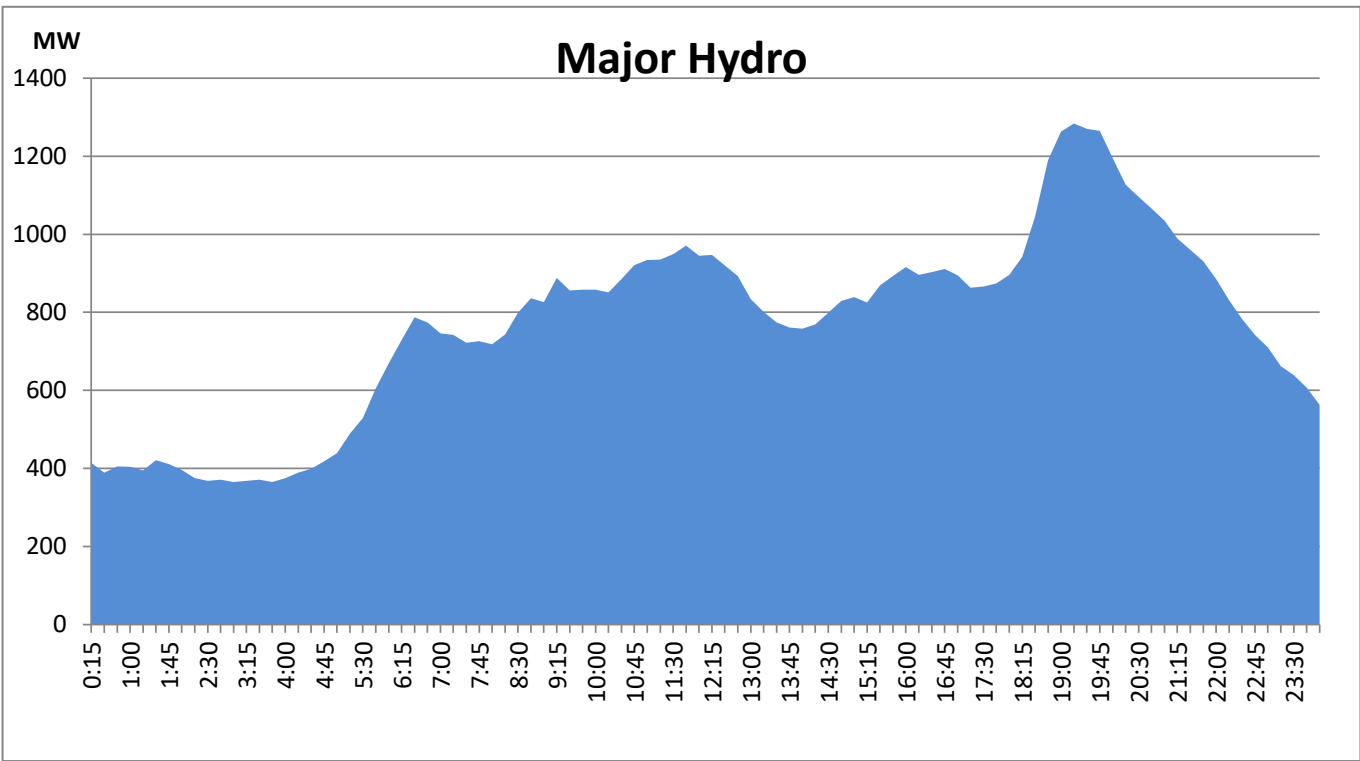
IPP Oil Plant Generation during the Previous day

July 21, 2021



Major Hydro Generation during the Previous day

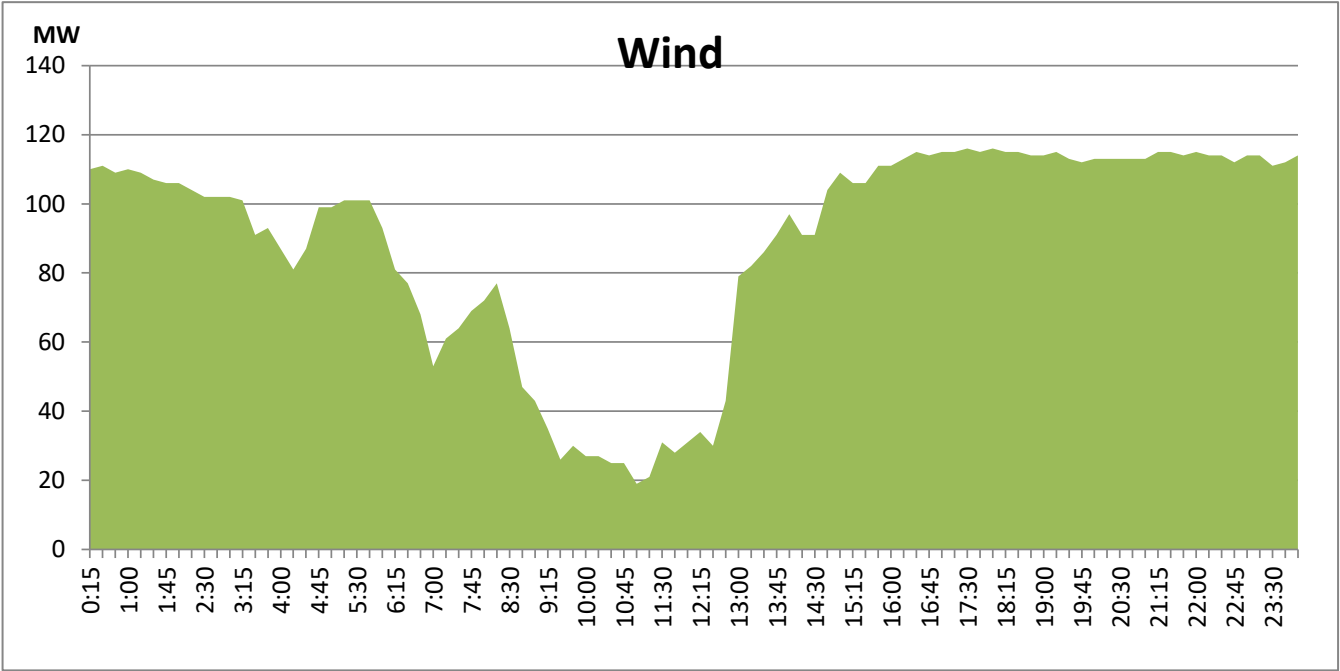
July 21, 2021



Wind Generation during the Previous day

July 21, 2021

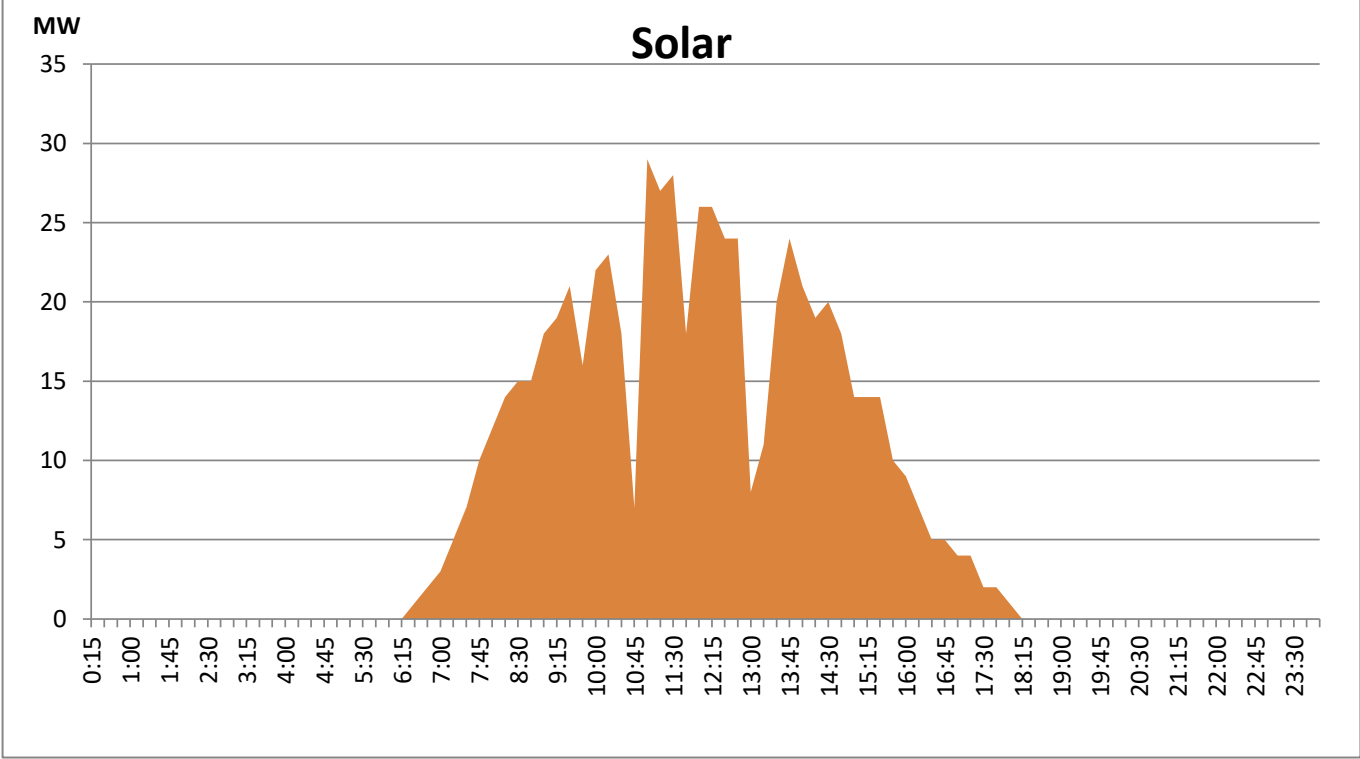
Based on Telemetered Power Stations only



Solar Generation during the Previous day

July 21, 2021

Based on Telemetered Power Stations only



Thermal Plant Fuel types

Power Station	Primary Fuel
CEB Thermal	
Sapugaskanda 1	Heavy Fuel
Sapugaskanda 2	Heavy Fuel
Kelanitissa Small Gas Turbines	Auto Diesel
GT 7 - Kelanitissa	Auto Diesel
Kelanitissa CCY	Naptha & Diesel
Lakvijaya 1	Coal
Lakvijaya 2	Coal
Lakvijaya 3	Coal
Uthuru Janani	Heavy Fuel
Barge CEB	Furnace Oil

Power Station	Primary Fuel
Private Thermal	
Asia Power	Heavy Fuel
Sojitz -	Auto Diesel
West Coast	Low Sulphur Furnace oil
ACE Embilipitiya	Furnace Oil

Major Incidents during the day -as reported by CEB morning of

July 23, 2021

1) Galle-Deniyaya cct tripped and auto-reclosed at 11:19 hrs due to operation of distance protection.

2) Matara 132/33kV T/F 02 tripped at 15:35 hrs due to operation of REF protection. The T/F was normalized by 15:48 hrs.

3) New Anuradhapura 220/132/33kV T/F 01 tripped at 18:02 hrs from 220kV side while switching the T/F on after breaker failure protection modification work. The T/F was switched on from 220kV and 132kV sides at 18:32 hrs. The T/F was normalized at 19:50 hrs.

4) Galle-Matara cct 01 tripped and auto-reclosed at 21:07 hrs due to operation of differential protection. At the same time,

Galle-Matara cct 02 tripped from Galle end. Then, Galle-Matara cct 01 tripped again from Galle end and tripped and auto reclosed from Matara end at 21:16 hrs. The ccts were normalized by 21:50 hrs.