

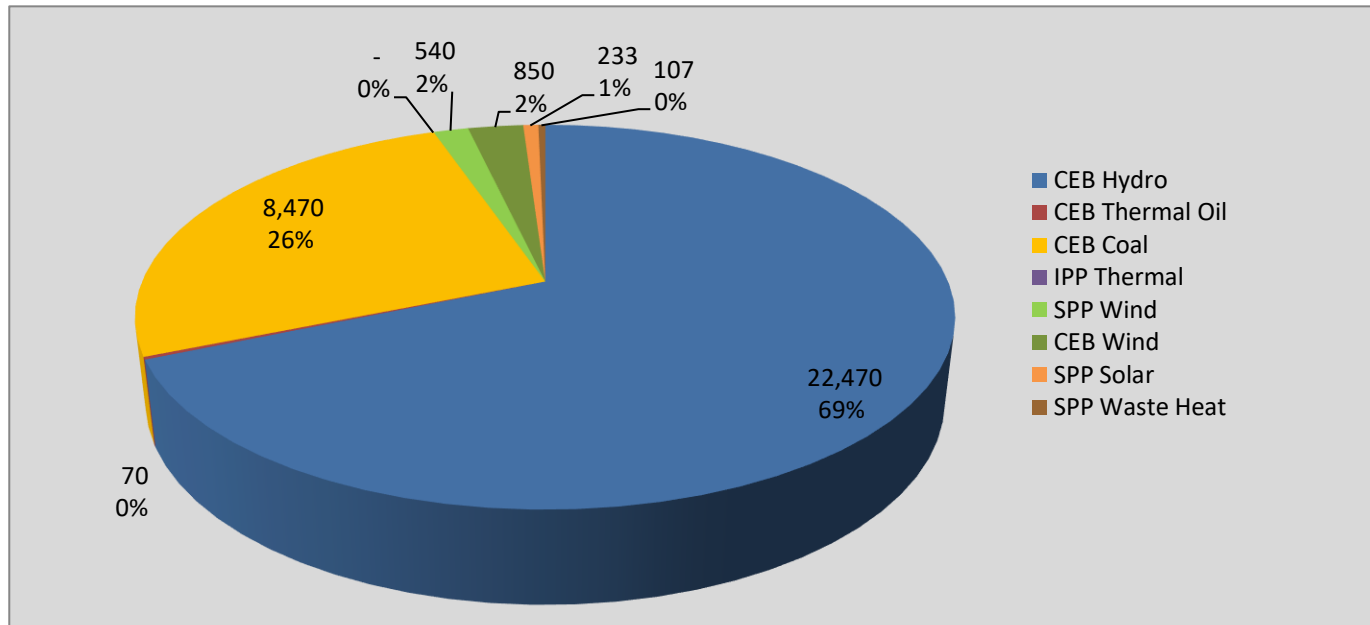
# **Generation and Reservoirs Statistics**

**June 5, 2021**



**PUBLIC UTILITIES COMMISSION OF SRI LANKA**

## Daily Generation Mix in MWh



### Total Generation

**32,730 MWh**

Note: Minihydro and Biomass and waste heat (except 10 MW WH plant at Kerawalapitiya) power plant energy is not included

## Cumulative Dispatch

Note: Minihydro and Biomass and waste heat (except 10 MW WH plant at Kerawalapitiya) power plant energy is not included

### For Current Month

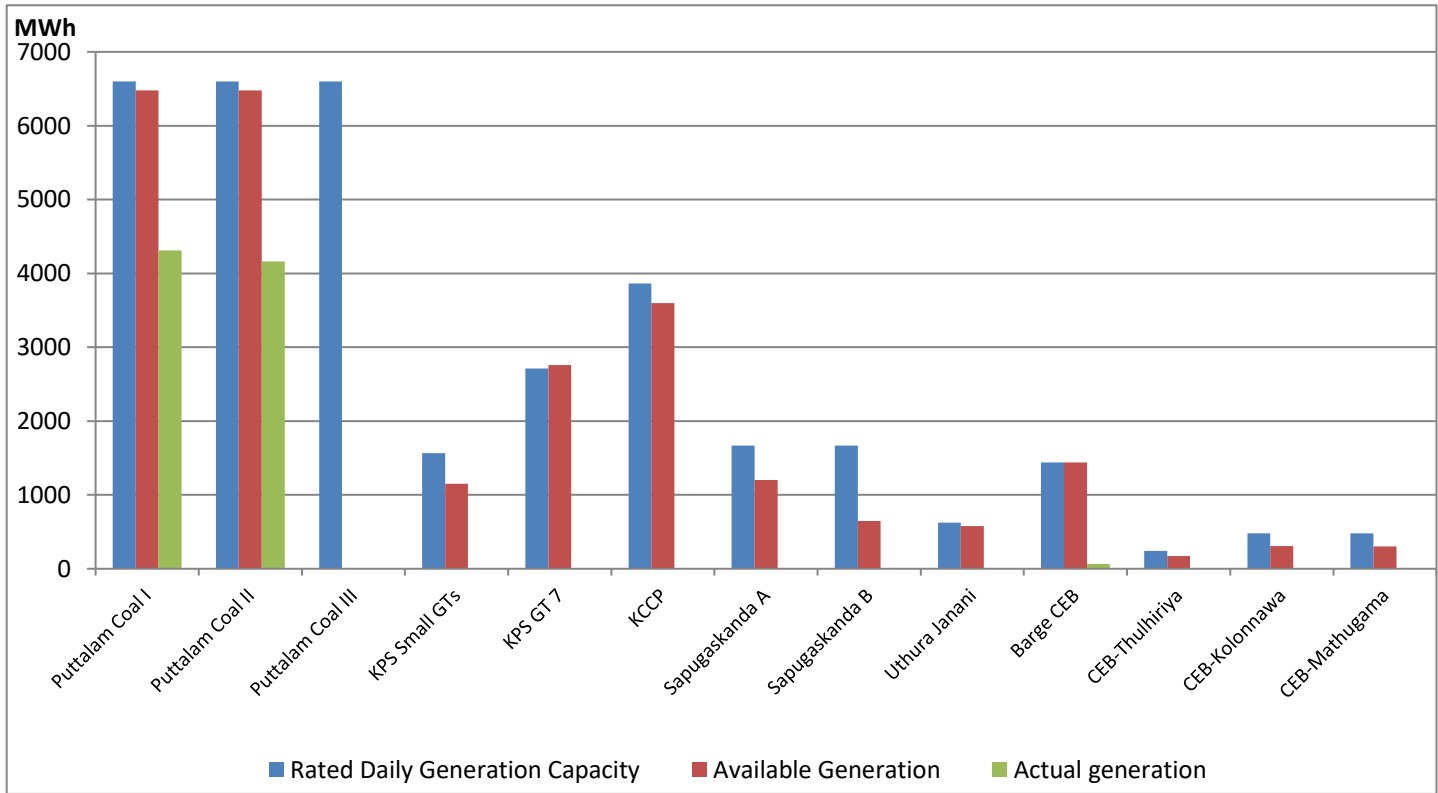
Category	Dispatch (GWh)	Percentage
CEB Hydro	116.4	63.51%
CEB Thermal Oil	0.6	0.34%
CEB Coal	53.1	28.99%
IPP Thermal	2.3	1.28%
SPP Wind	2.6	1.39%
CEB Wind	6.0	3.25%
SPP Solar	1.4	0.78%
SPP Waste Heat	0.9	0.47%
<b>Total</b>	<b>183.2</b>	

### For Current Year

Category	Dispatch (GWh)	Percentage
CEB Hydro	1,611.4	25.54%
CEB Thermal Oil	690.8	10.95%
CEB Coal	2,823.5	44.76%
IPP Thermal	1,034.3	16.39%
SPP Wind	53.4	0.85%
CEB Wind	52.7	0.83%
SPP Solar	40.2	0.64%
SPP Waste Heat	2.7	0.04%
<b>Total</b>	<b>6,308.8</b>	

# CEB owned Thermal Plant Dispatch

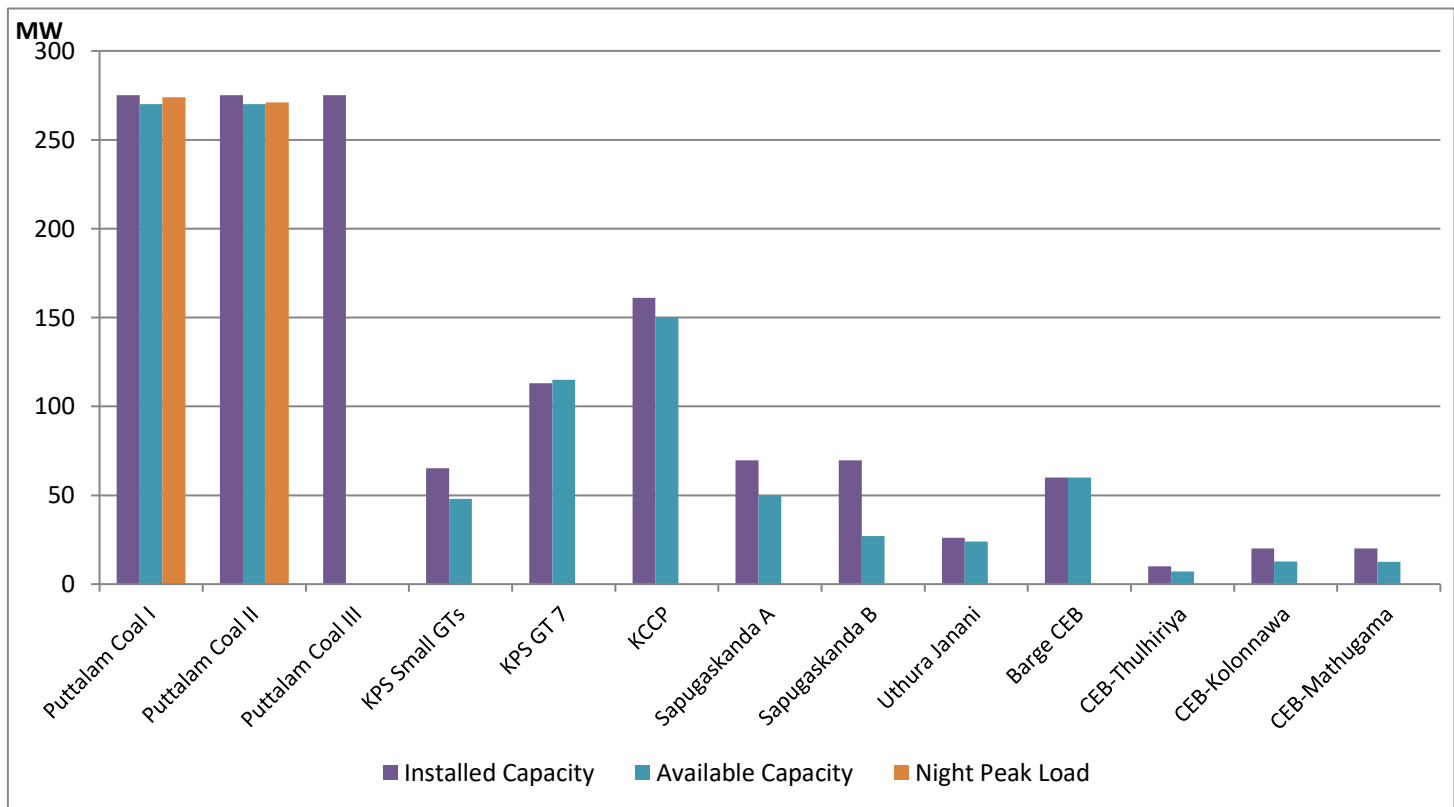
June 5, 2021



Available Generation is estimated based on plant availability at 6.00am on

June 6, 2021

# CEB owned Thermal Plant Loading at the Night Peak



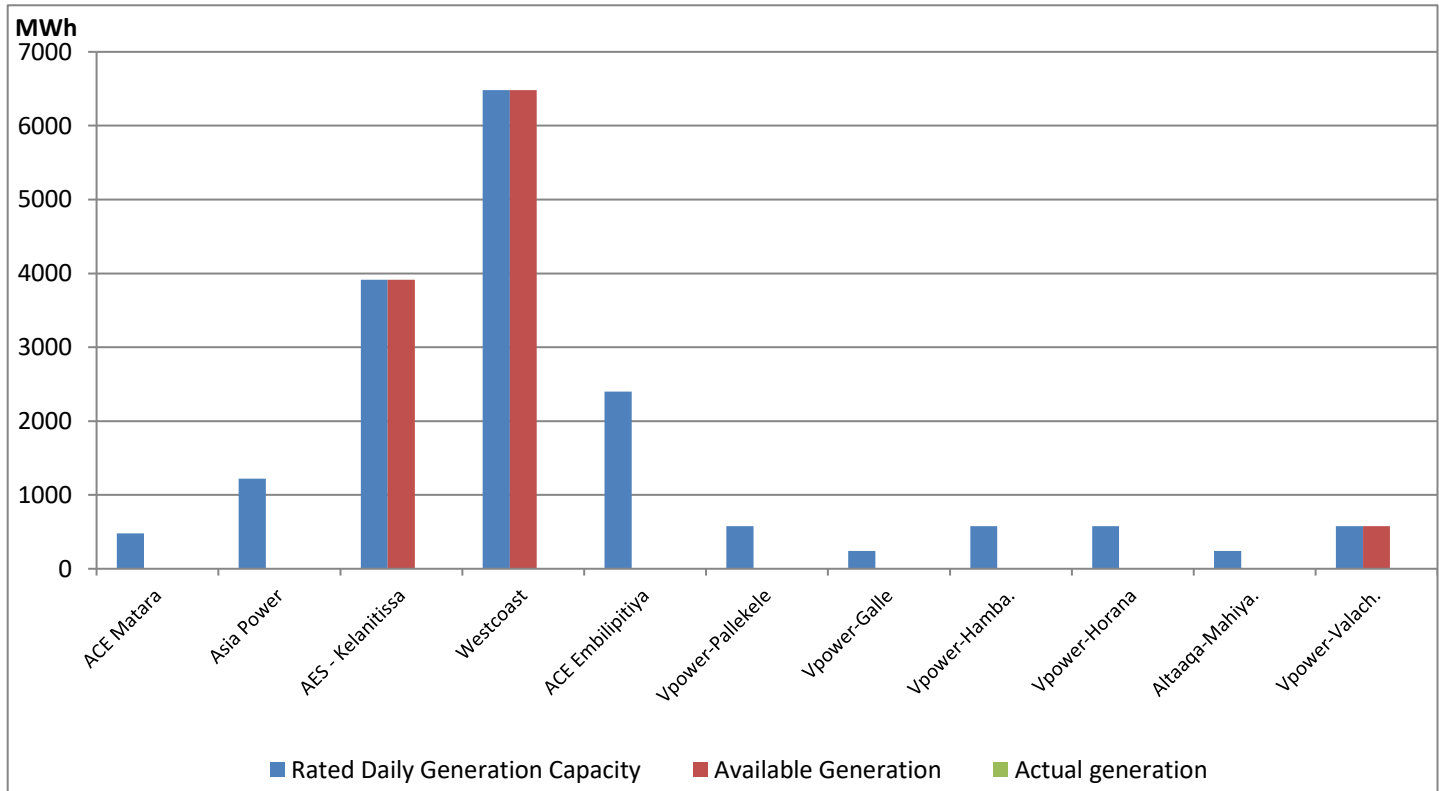
Note- Plant availability is recorded at 6.00 am on

June 6, 2021

## IPP owned Thermal Plant Dispatch

June 5, 2021

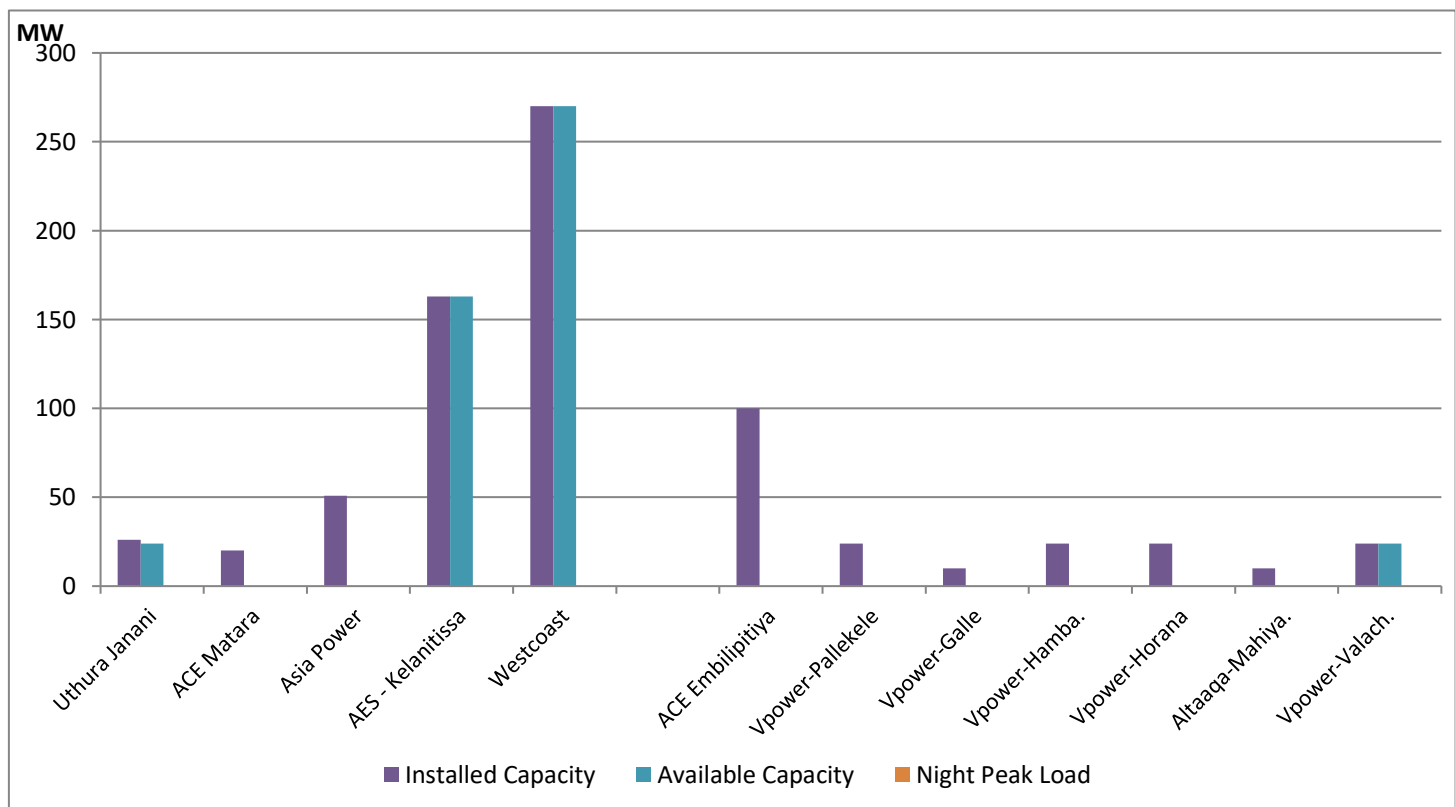
ACE Embilipitiya, ACE Matara, Asia Power, V Power Pallekale, Vpower Galle, V Power Horana, Vpower Hambantota and Altaqa Mahiyangaya are not available due to expiration of PPAs



Available Generation is estimated based on plant availability at 6.00am on

June 6, 2021

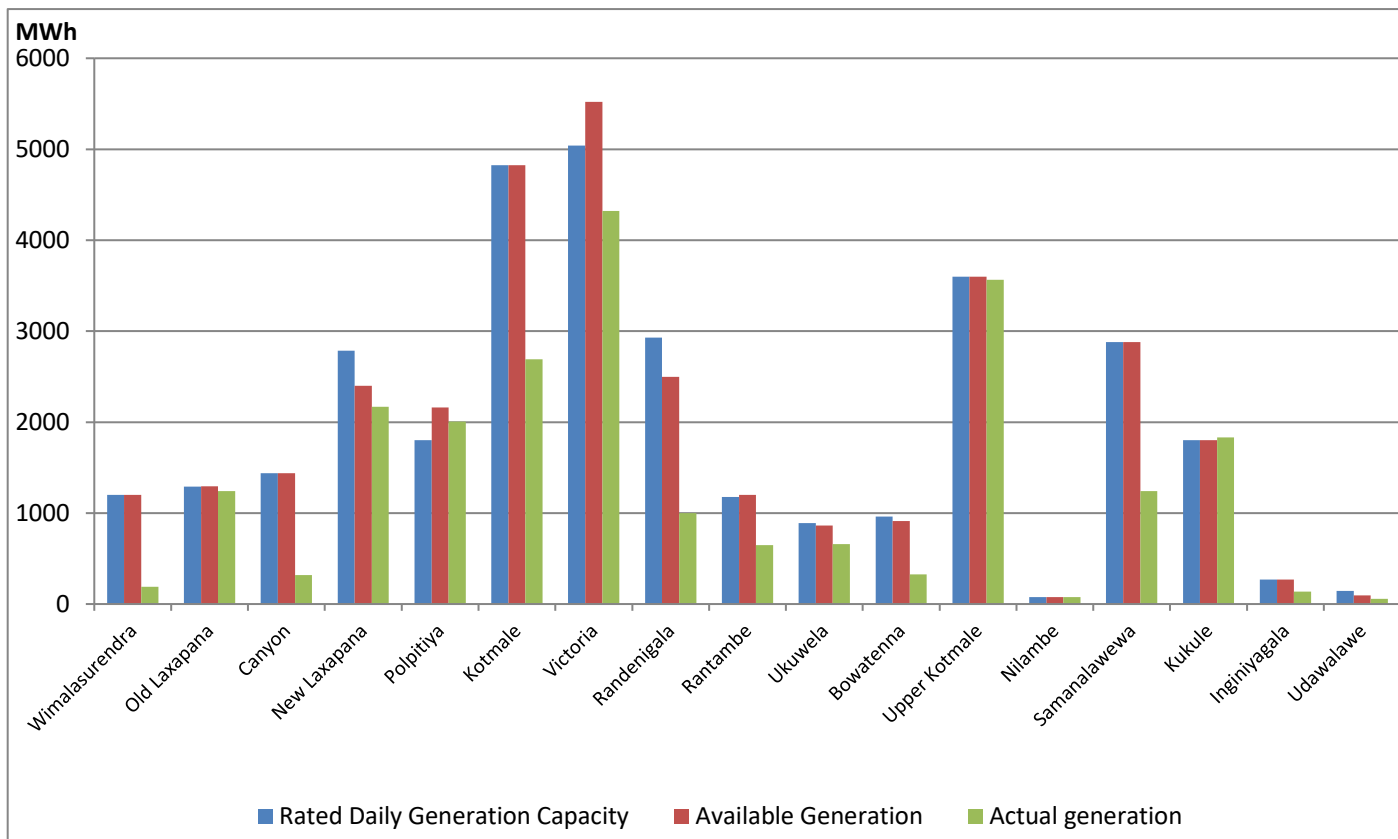
## IPP owned Thermal Plant Loading at the Night Peak



Note- Plant availability is recorded at 6.00 am on June 6, 2021

## Major Hydro Plant Dispatch

June 5, 2021

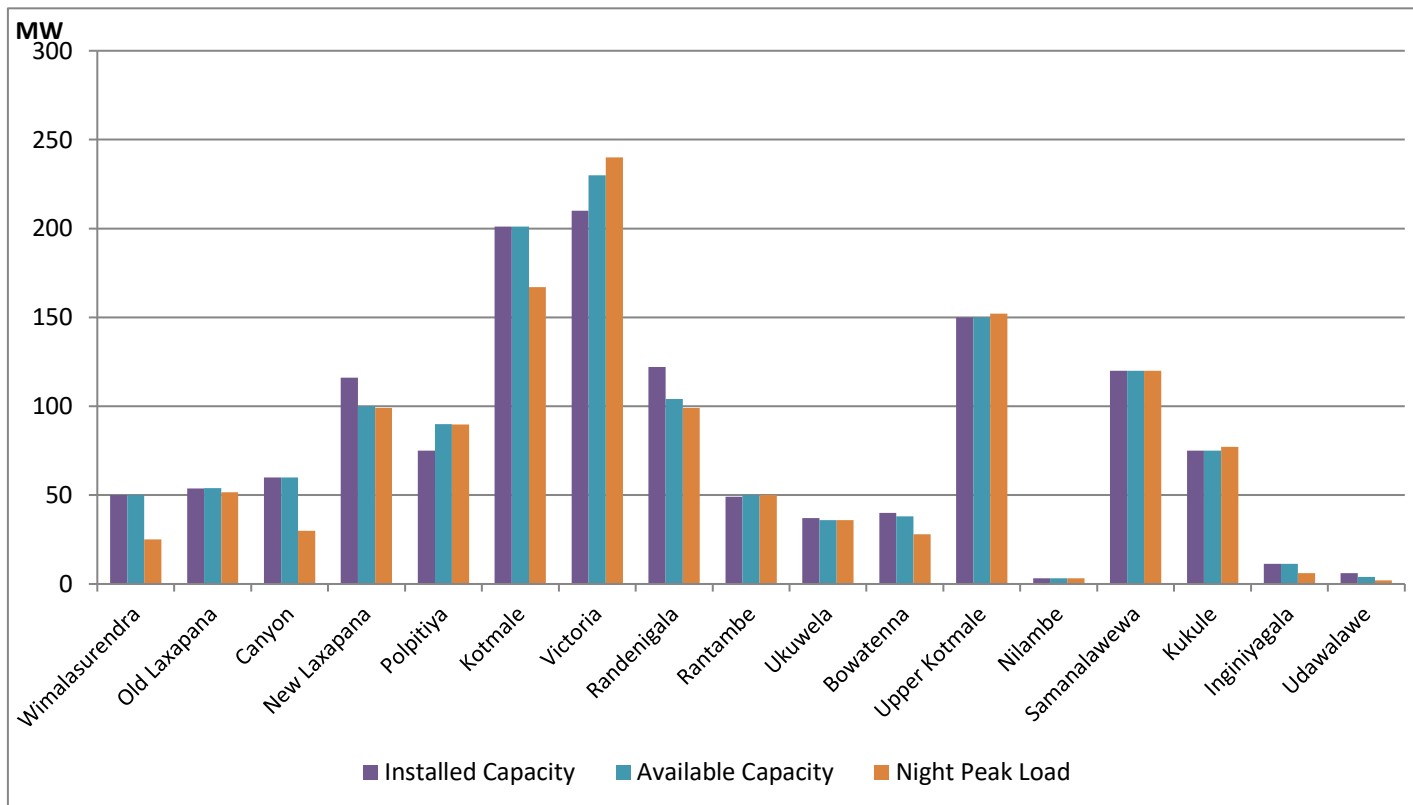


Note- Available Generation is estimated based on plant availability at 6.00am on

June 6, 2021

## Major Hydro Plant Loading at Night Peak

June 5, 2021

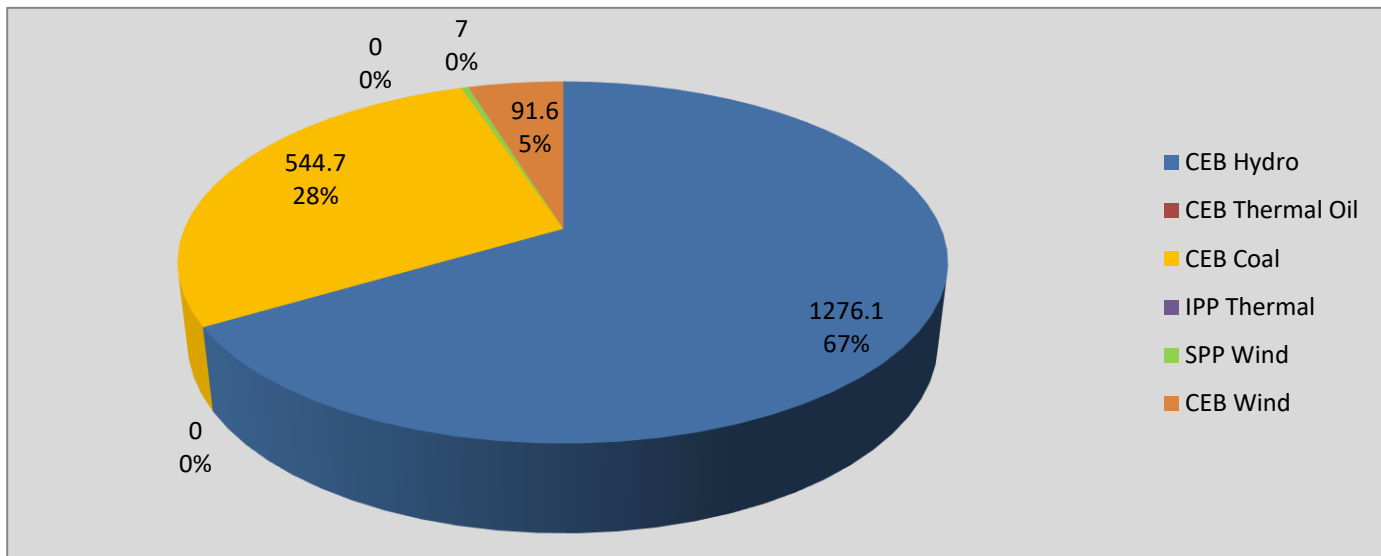


Note- Plant availability is recorded at 6.00 am on

June 6, 2021

## Contribution to the Night Peak in MW

June 5, 2021



Night Peak*	1,919.3 MW
Day Peak	1,540.9 MW
Minimum Demand	1,142.8 MW

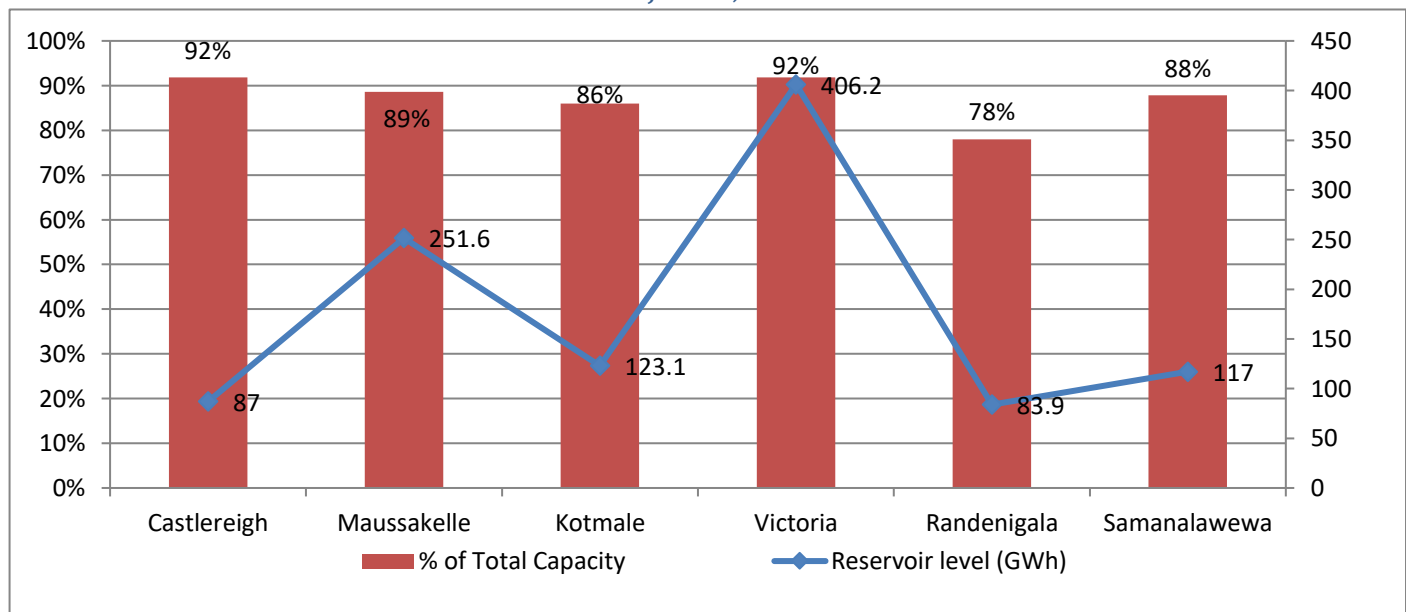
Notes:

\*The above chart pattern and night peak figure is presented excluding the contribution of Moragahakanda, other minihydro and biomass power plants

\*\*Day peak and Minimum demand includes the contribution from Moragahakanda, wind and solar plants

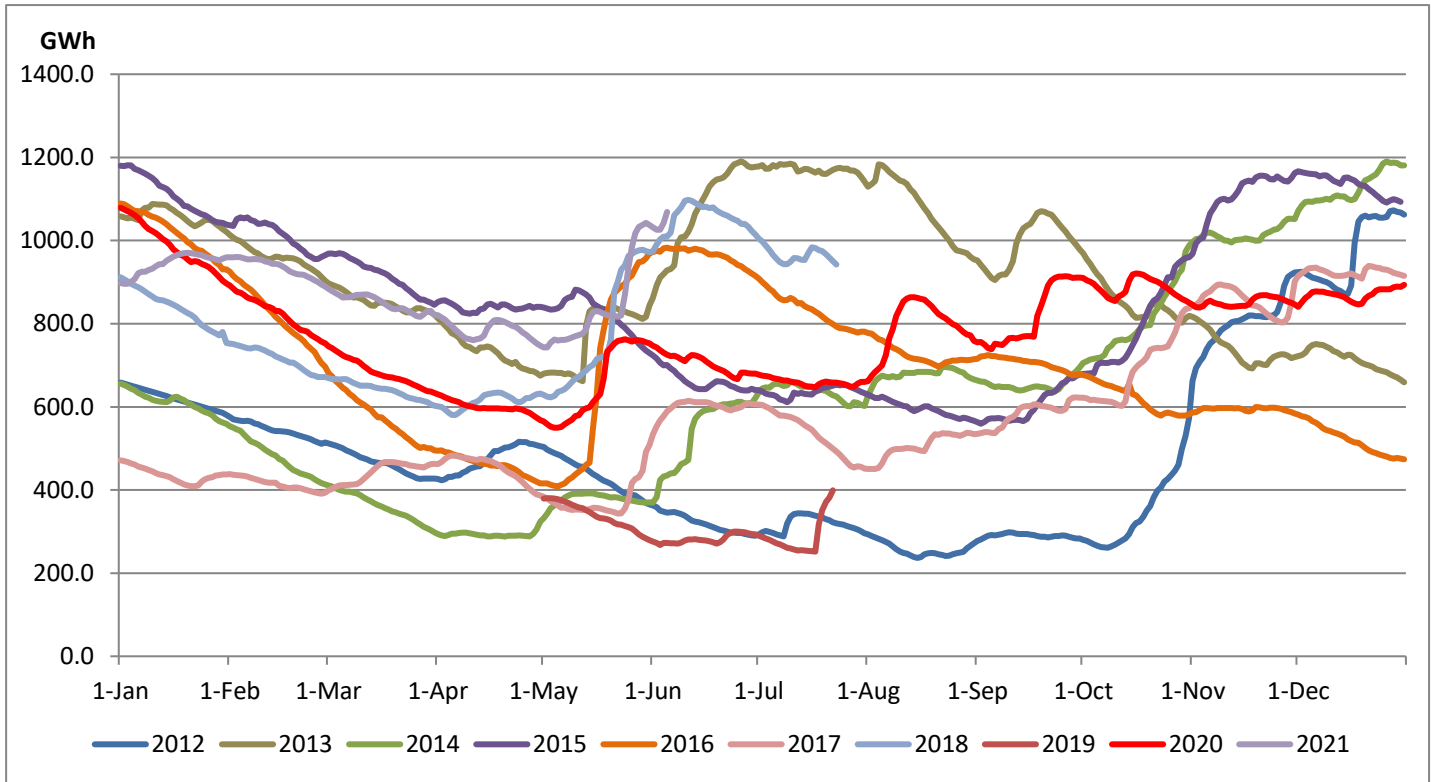
\* in addition to the night peak figure presented above, Kerawalapitiya waste heat plant, other MiniHydro and Biomass Plants of installed capacity 192.00 MW has recorded total 150.40 MW at night peak

## Reservoir Levels - as at 06.00 Hr on June 6, 2021



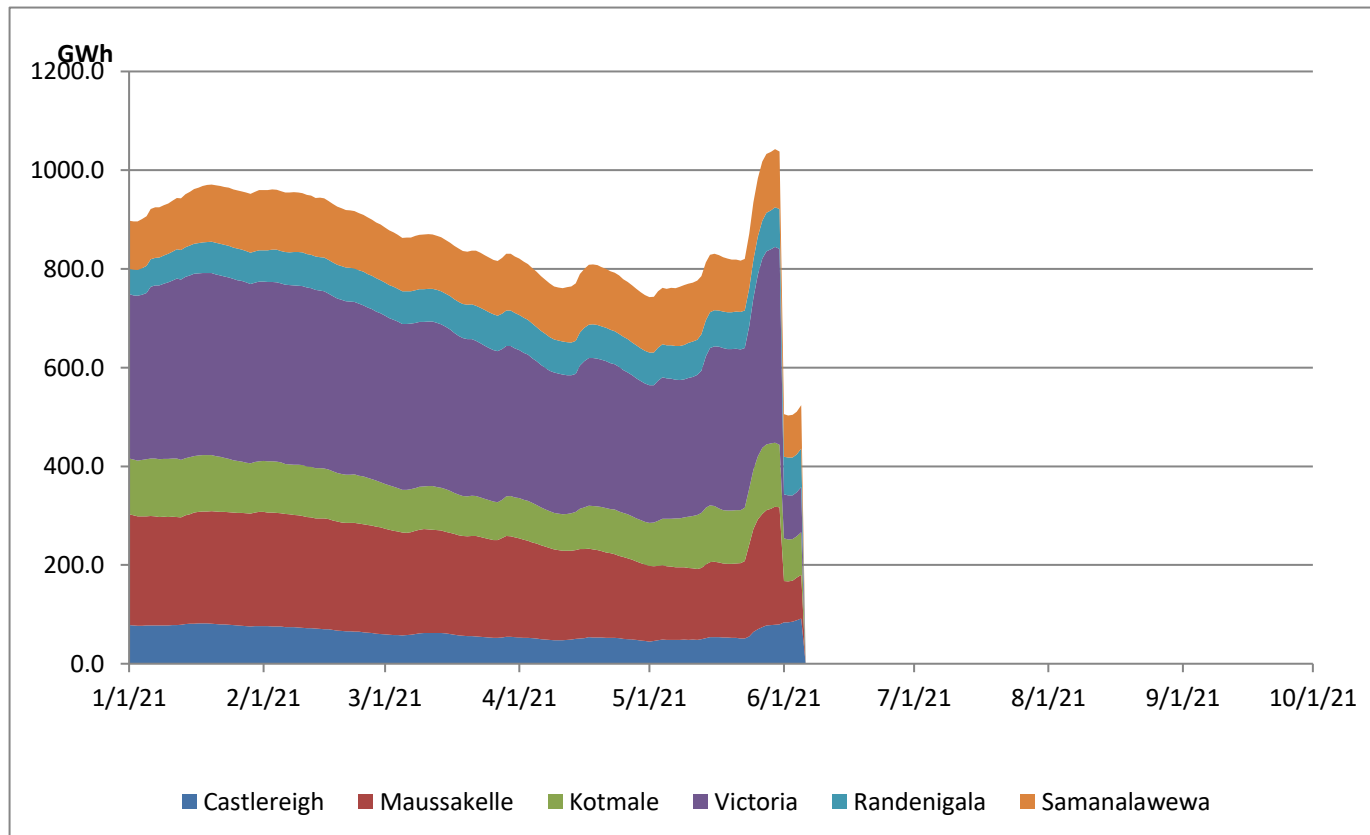
Total Reservoir Level(GWh)	1068.8
% of Total capacity	88.7%

## Comparison of Total Reservoir Storage Levels with Past Years

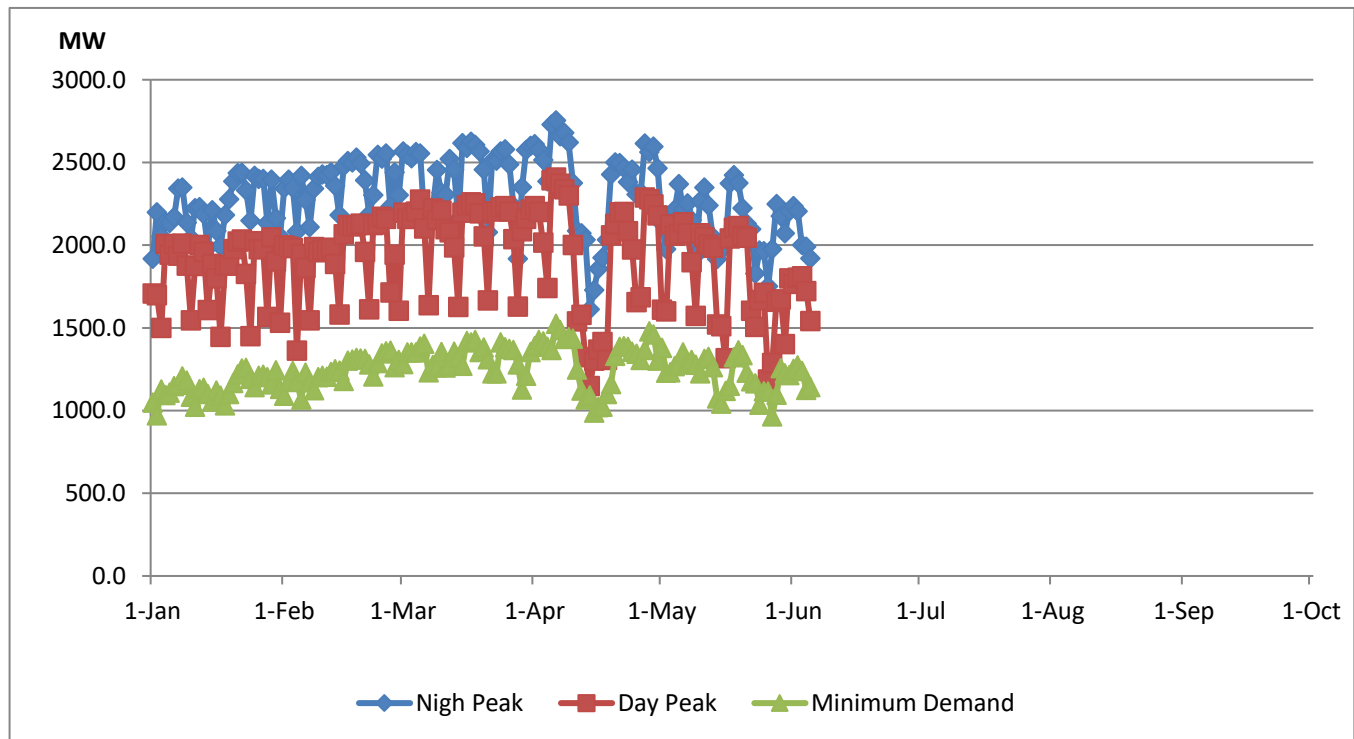


Data for 2018 and 2019 are only available for part of year.

## Variation of Major Hydro Reservoir Levels in the current year (GWh)



## Variation of Demand during the current year



### Notes:

The night peak is excluding the contribution from Minihydro and biomass power plants

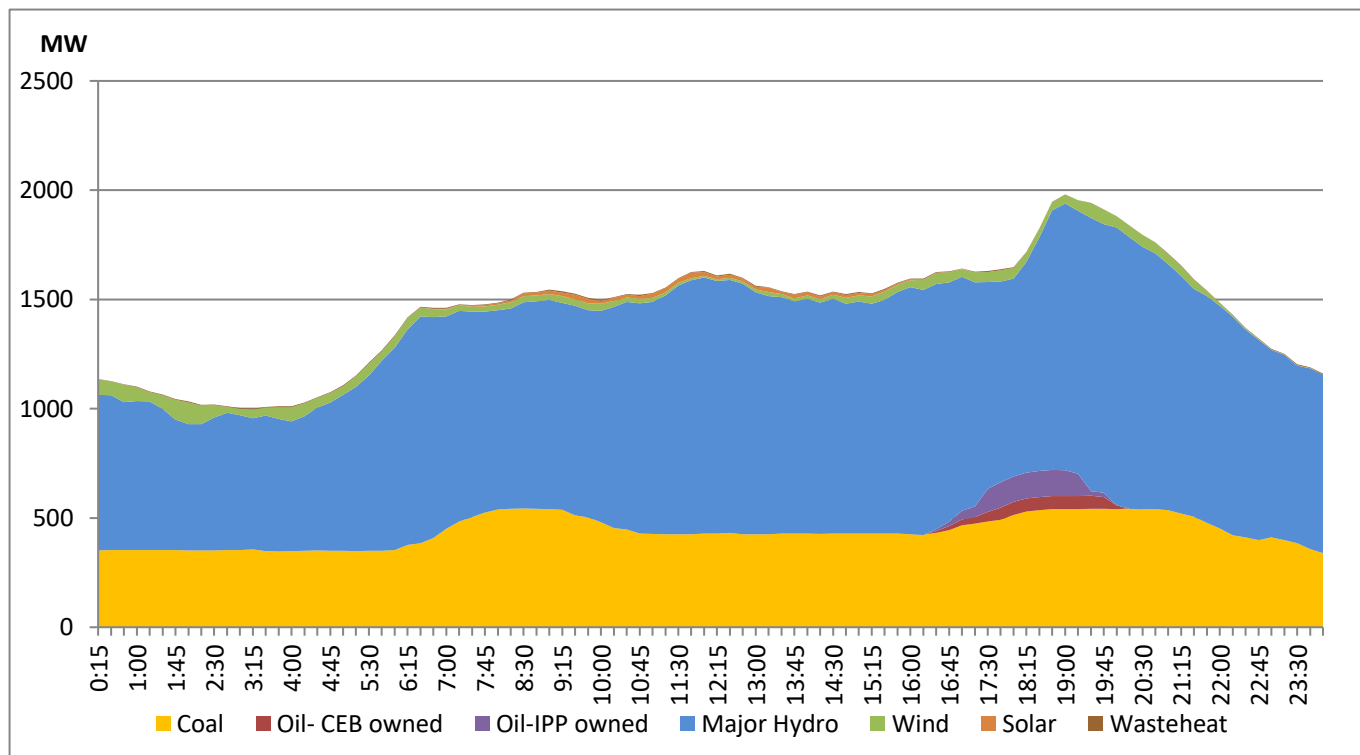
Day peak and minimum demand graphs includes the contribution from Moragahakanda power plant

All graphs include the contribution from telemetered solar and wind plants

## Daily Load Curve of the Previous day

June 4, 2021

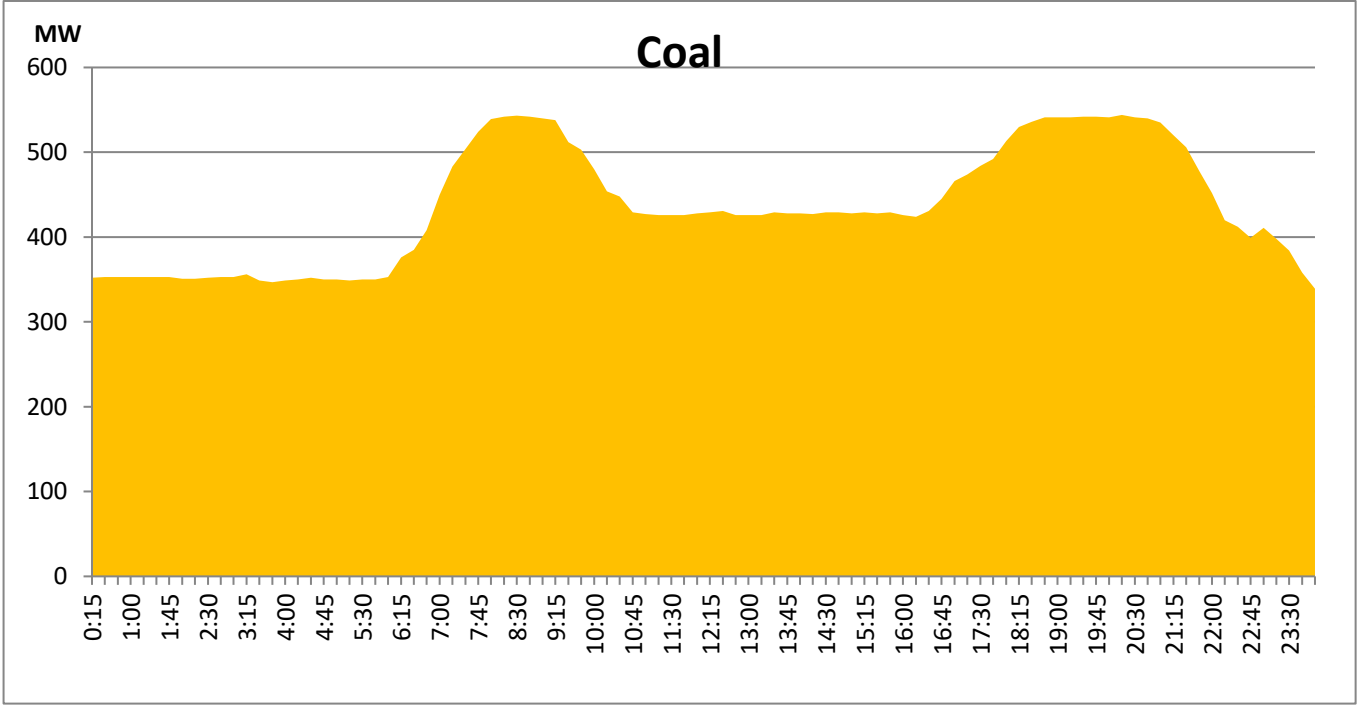
Solar and wind data is based on Telemetered Power Stations only





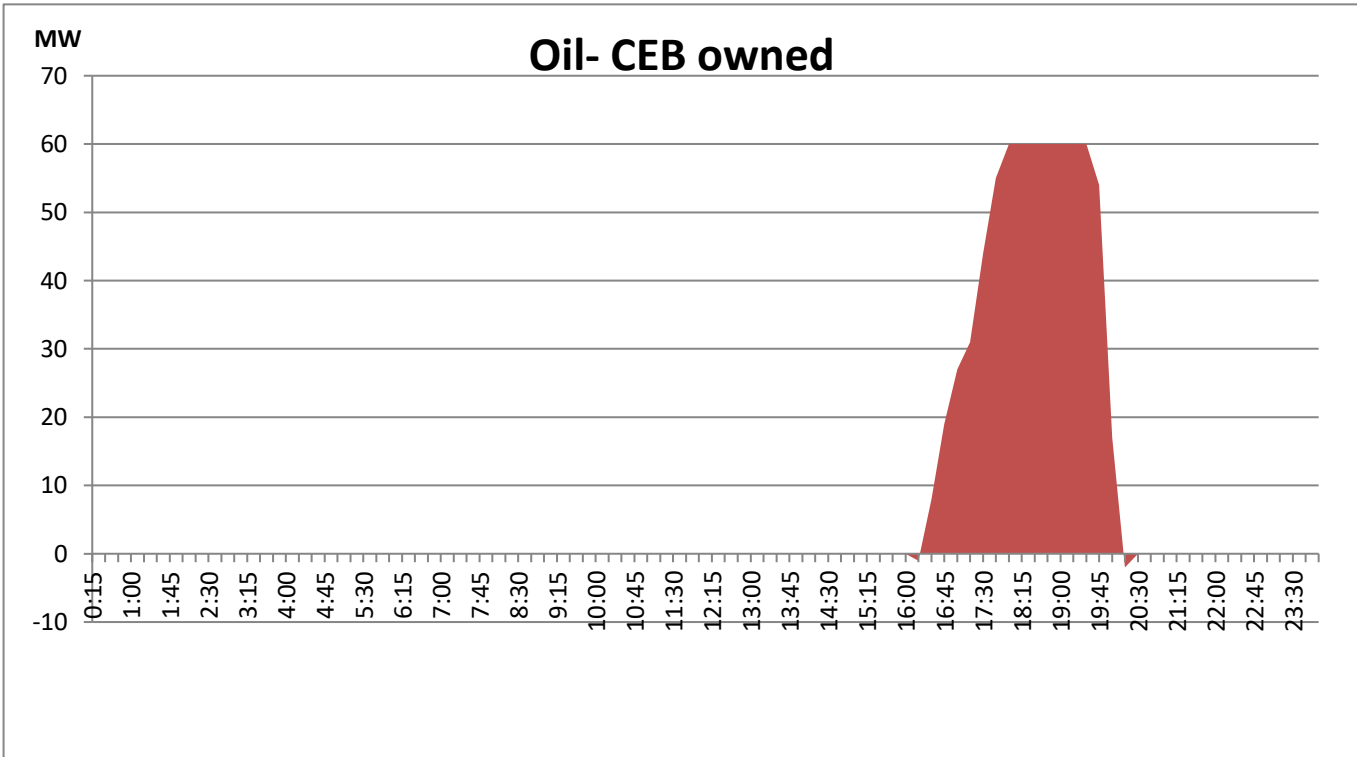
Coal Generation during the Previous day

June 4, 2021



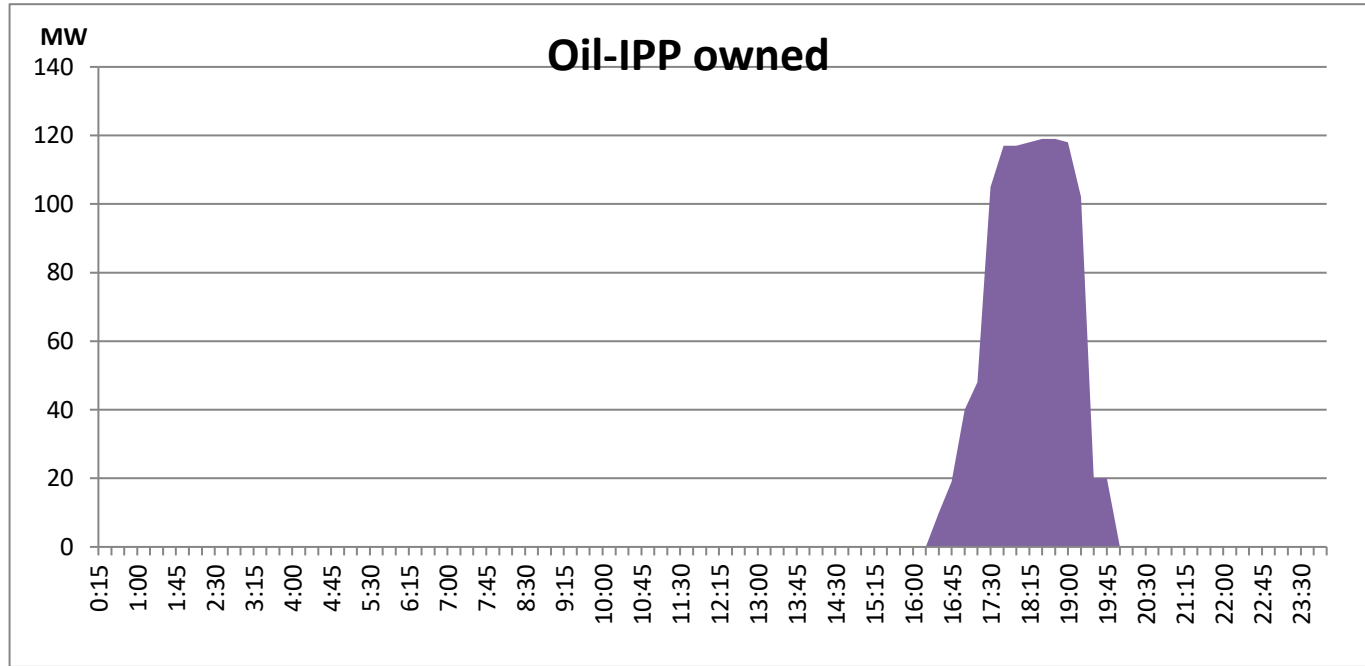
CEB Oil Plant Generation during the Previous day

June 4, 2021



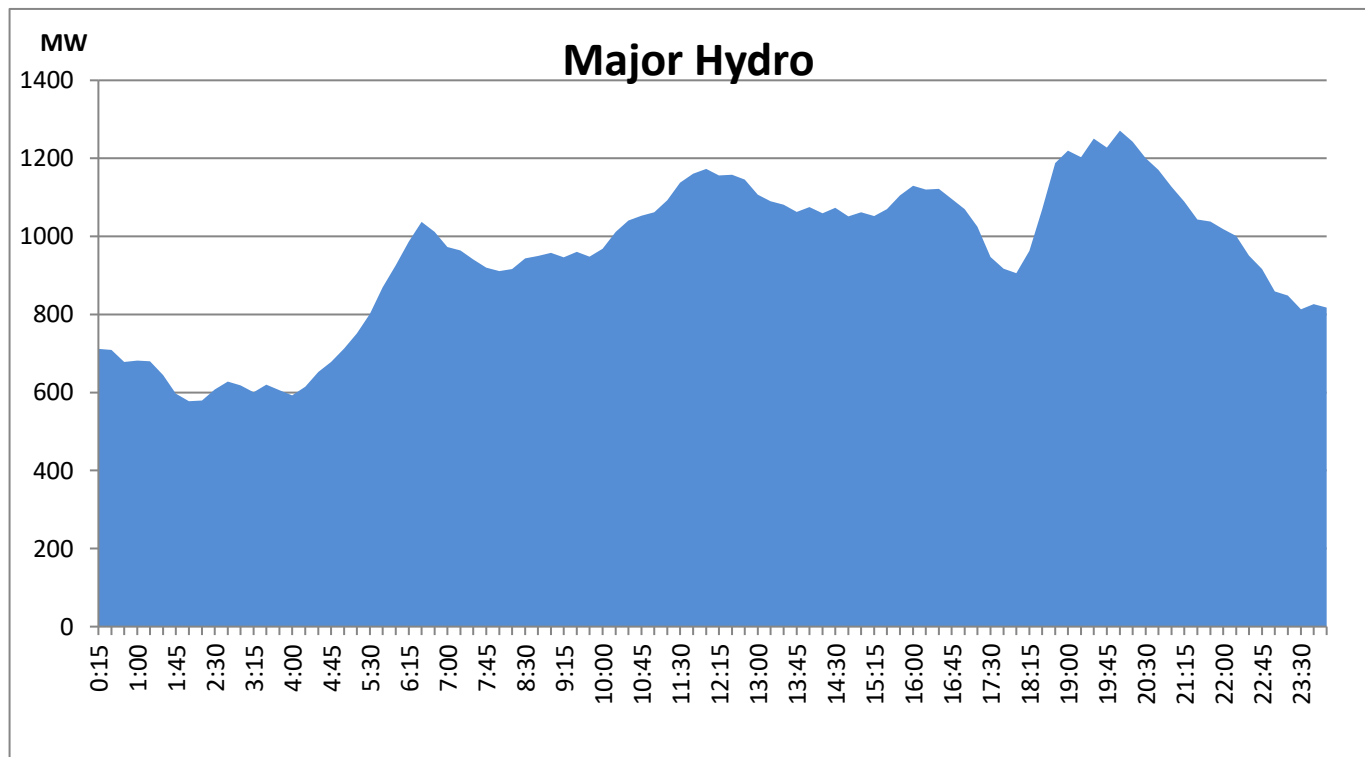
### IPP Oil Plant Generation during the Previous day

June 4, 2021



### Major Hydro Generation during the Previous day

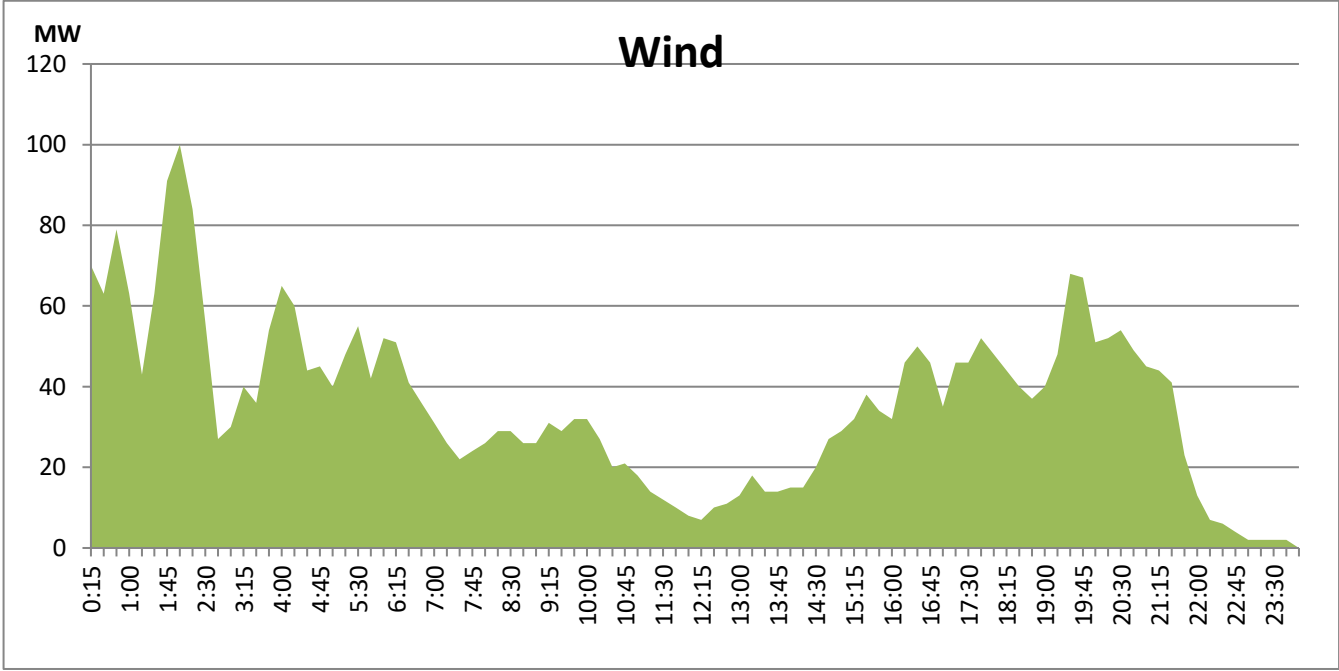
June 4, 2021



### Wind Generation during the Previous day

June 4, 2021

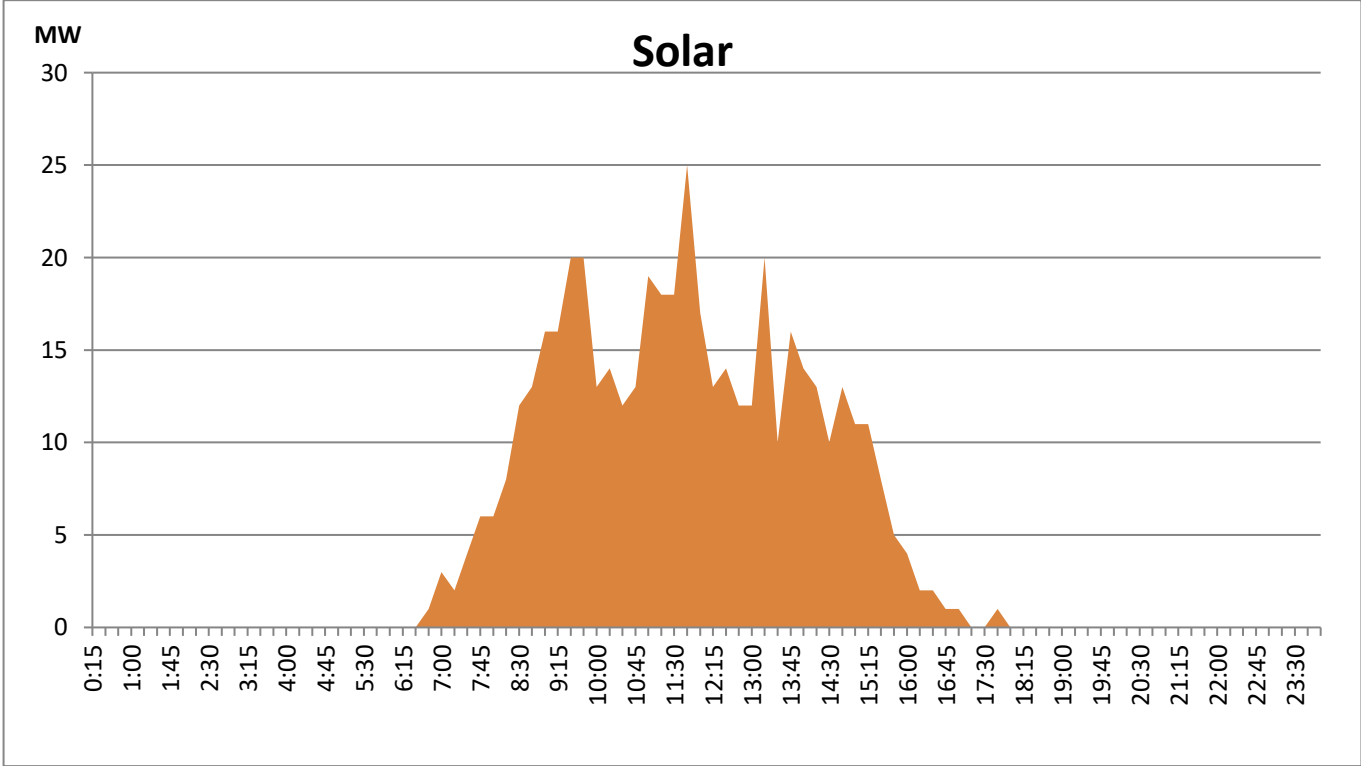
Based on Telemetered Power Stations only



### Solar Generation during the Previous day

June 4, 2021

Based on Telemetered Power Stations only



Summary of Major Plant performance

Plant	Installed Capacity (MW)	Plant Availability (MW)	Night peak Load (MW)	Plant Dispatch (GWh)
Wimalasurendra	50.00	50.00	25.00	191.00
Old Laxapana	53.80	54.00	51.60	1,240.00
Canyon	60.00	60.00	30.00	318.00
New Laxapana	116.00	100.00	99.00	2,167.00
Polpitiya	75.00	90.00	89.80	2,004.00
Kotmale	201.00	201.00	167.00	2,690.00
Victoria	210.00	230.00	240.00	4,323.00
Randenigala	122.00	104.00	99.00	999.00
Rantambe	49.00	50.00	50.00	647.00
Ukuwela	37.00	36.00	36.00	657.00
Bowatenna	40.00	38.00	28.00	325.00
Upper Kotmale	150.00	150.00	152.00	3,565.00
Nilambe	3.20	3.20	3.20	75.00
Samanalawewa	120.00	120.00	120.00	1,243.00
Kukule	75.00	75.00	77.10	1,832.00
Inginiyagala	11.25	11.25	6.00	136.00
Udawalawe	6.00	4.00	2.00	59.00
Puttalam Coal I	275.00	270.00	274.00	4,309.00
Puttalam Coal II	275.00	270.00	271.00	4,160.00
Puttalam Coal III	275.00	-	-	-
KPS Small GTs	65.20	48.00	-	-
KPS GT 7	113.00	115.00	-	-
KCCP	161.00	150.00	-	-
Sapugaskanda A	69.60	50.00	-	-
Sapugaskanda B	69.60	27.00	-	-
Uthura Janani	26.01	24.00	-	-
Barge CEB	60.00	60.00	-	67.00
CEB-Thulhiriya	10.00	7.20	-	-
CEB-Kolonnawa	20.00	12.80	-	-
CEB-Mathugama	20.00	12.60	-	-
ACE Matara	20.00	-	-	-
Asia Power	50.80	-	-	-
AES - Kelanitissa	163.00	163.00	-	-
Westcoast	270.00	270.00	-	-
ACE Embilipitiya	100.00	-	-	-
Vpower-Pallekele	24.00	-	-	-
Vpower-Galle	10.00	-	-	-
Vpower-Hamba.	24.00	-	-	-
Vpower-Horana	24.00	-	-	-
Altaaqa-Mahiya.	10.00	-	-	-
Vpower-Valach.	24.00	24.00	-	-
Solar	58.00		-	229.00
Wind	128.00		98.60	1,387.00
MH and BM	394.00		150.40	Not available
Total without NCRE	3,538.46	2,880.05		

Night peak load of MH and BM only include loading of Minihydro plants of total capacity MW 192

Installed capacity of Solar, wind, Mini-hydro and Biomass plants are as of end of December 2019

Plant availability is the availability recorded at 6 am on

June 6, 2021

### Thermal Plant Fuel types

Power Station	Primary Fuel
<b>CEB Thermal</b>	
<b>Sapugaskanda 1</b>	Heavy Fuel
<b>Sapugaskanda 2</b>	Heavy Fuel
<b>Kelanitissa Small Gas Turbines</b>	Auto Diesel
<b>GT 7 - Kelanitissa</b>	Auto Diesel
<b>Kelanitissa CCY</b>	Naptha & Diesel
<b>Lakvijaya 1</b>	Coal
<b>Lakvijaya 2</b>	Coal
<b>Lakvijaya 3</b>	Coal
<b>Uthuru Janani</b>	Heavy Fuel
<b>Barge CEB</b>	Furnace Oil

Power Station	Primary Fuel
<b>Private Thermal</b>	
<b>Asia Power</b>	Heavy Fuel
<b>Sojitz -</b>	Auto Diesel
<b>West Coast</b>	Low Sulphur Furnace oil
<b>ACE Embilipitiya</b>	Furnace Oil

### Major Incidents during the day -as reported by CEB morning of

June 6, 2021

- 1) Kukule spilling continues to the present hour.
- 2) Laxapana Pond spilling stopped at 02:35hrs on 06.06.2021.
- 3) Norton Pond spilling occurred between 03:13hrs to 09:45hrs and 21:30hrs to 22:15hrs on 05.06.2021.