

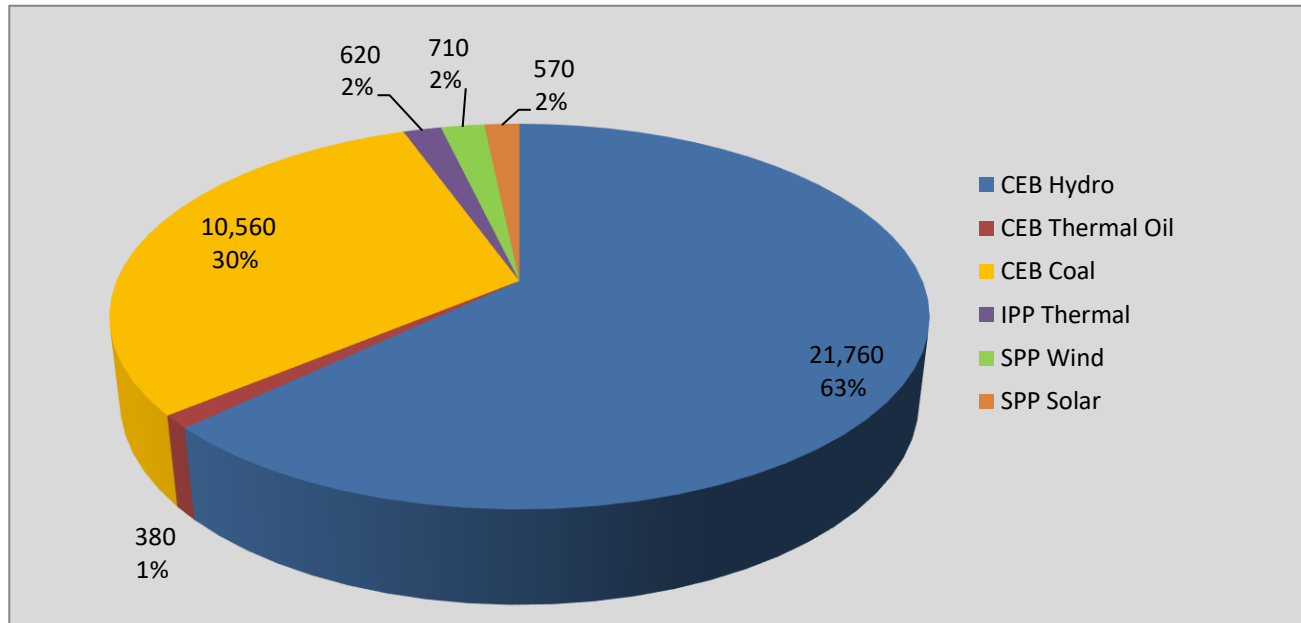
Generation and Reservoirs Statistics

May 28, 2021



PUBLIC UTILITIES COMMISSION OF SRI LANKA

Daily Generation Mix in MWh



Total Generation 35,630 MWh

Note: Generation from other SPPs (Mini Hydro and Biomass) is not included

Cumulative Dispatch

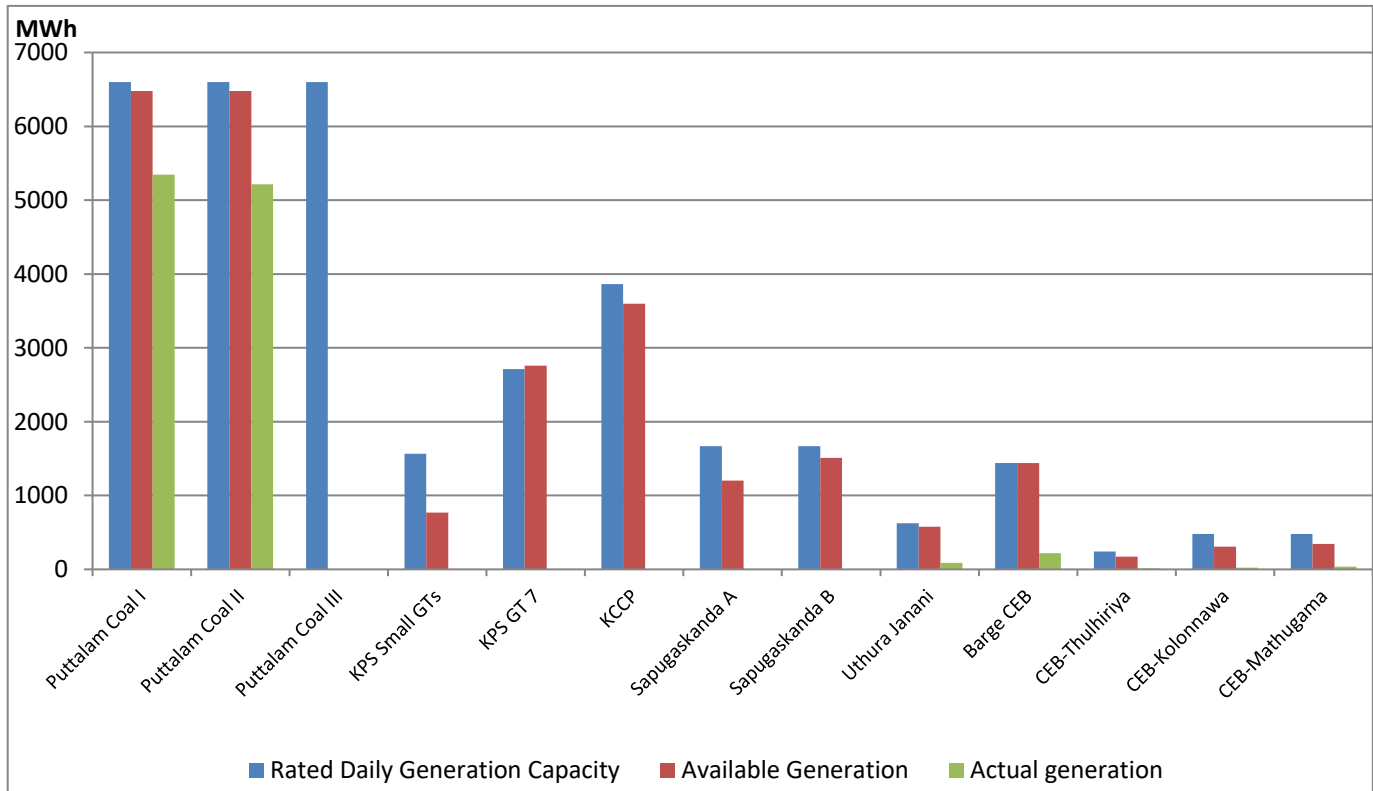
Note: Generation from other SPPs (Mini Hydro, small scale Solar and Biomass) is not included

For Current Month

| Category | Dispatch (GWh) | Percentage |
|-----------------|----------------|------------|
| CEB Hydro | 411.8 | 38.88% |
| CEB Thermal Oil | 81.2 | 7.66% |
| CEB Coal | 476.3 | 44.97% |
| IPP Thermal | 33.4 | 3.15% |
| SPP Wind | 15.2 | 1.44% |
| SPP Solar | 8.0 | 0.75% |
| Total | 1,059.0 | |

For Current Year

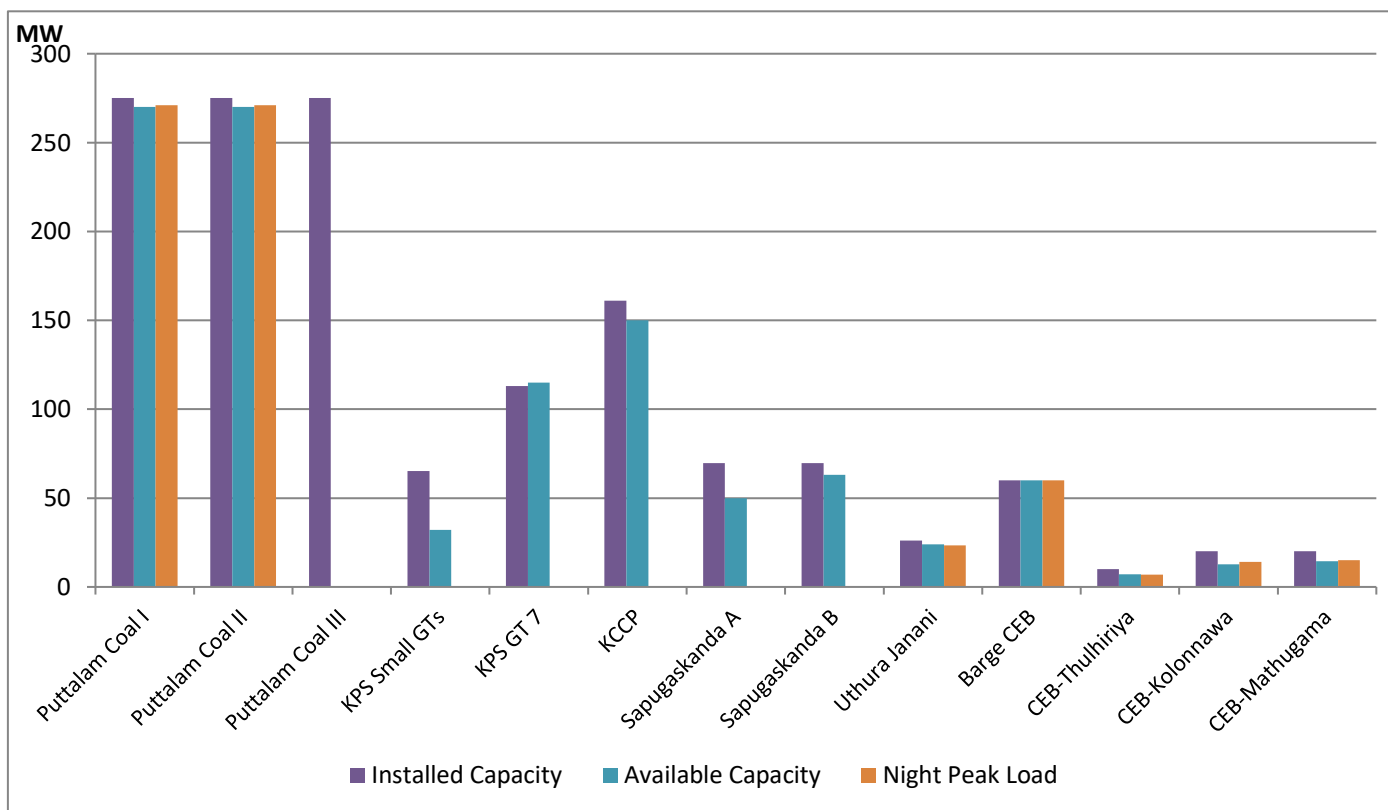
| Category | Dispatch (GWh) | Percentage |
|-----------------|----------------|------------|
| CEB Hydro | 1,425.5 | 23.69% |
| CEB Thermal Oil | 689.8 | 11.46% |
| CEB Coal | 2,740.8 | 45.54% |
| IPP Thermal | 1,030.4 | 17.12% |
| SPP Wind | 49.3 | 0.82% |
| SPP Solar | 38.9 | 0.65% |
| Total | 6,018.2 | |



Available Generation is estimated based on plant availability at 6.00am on

May 29, 2021

CEB Thermal Plant Loading at the Night Peak

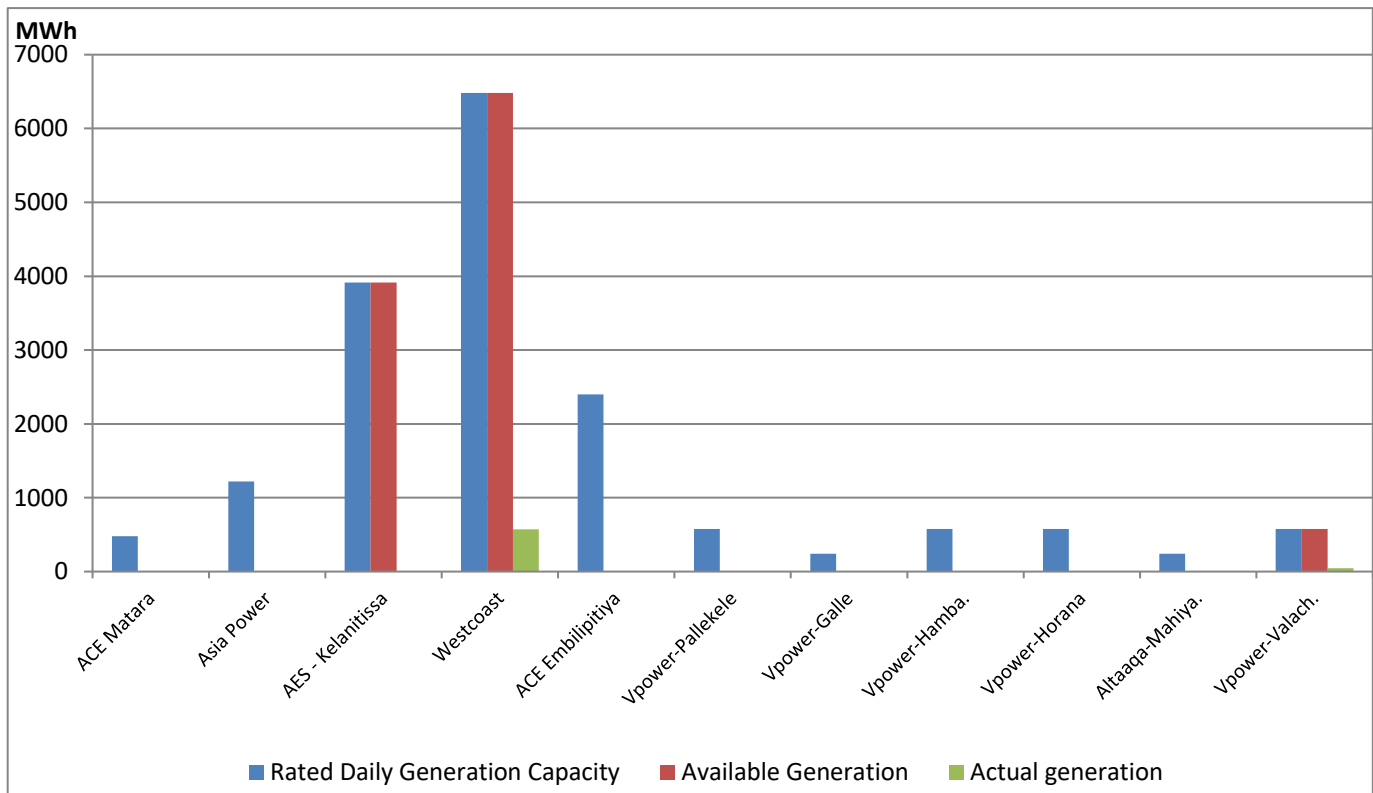


Note- Plant availability is recorded at 6.00 am on May 29, 2021

IPP Thermal Plant Dispatch

May 28, 2021

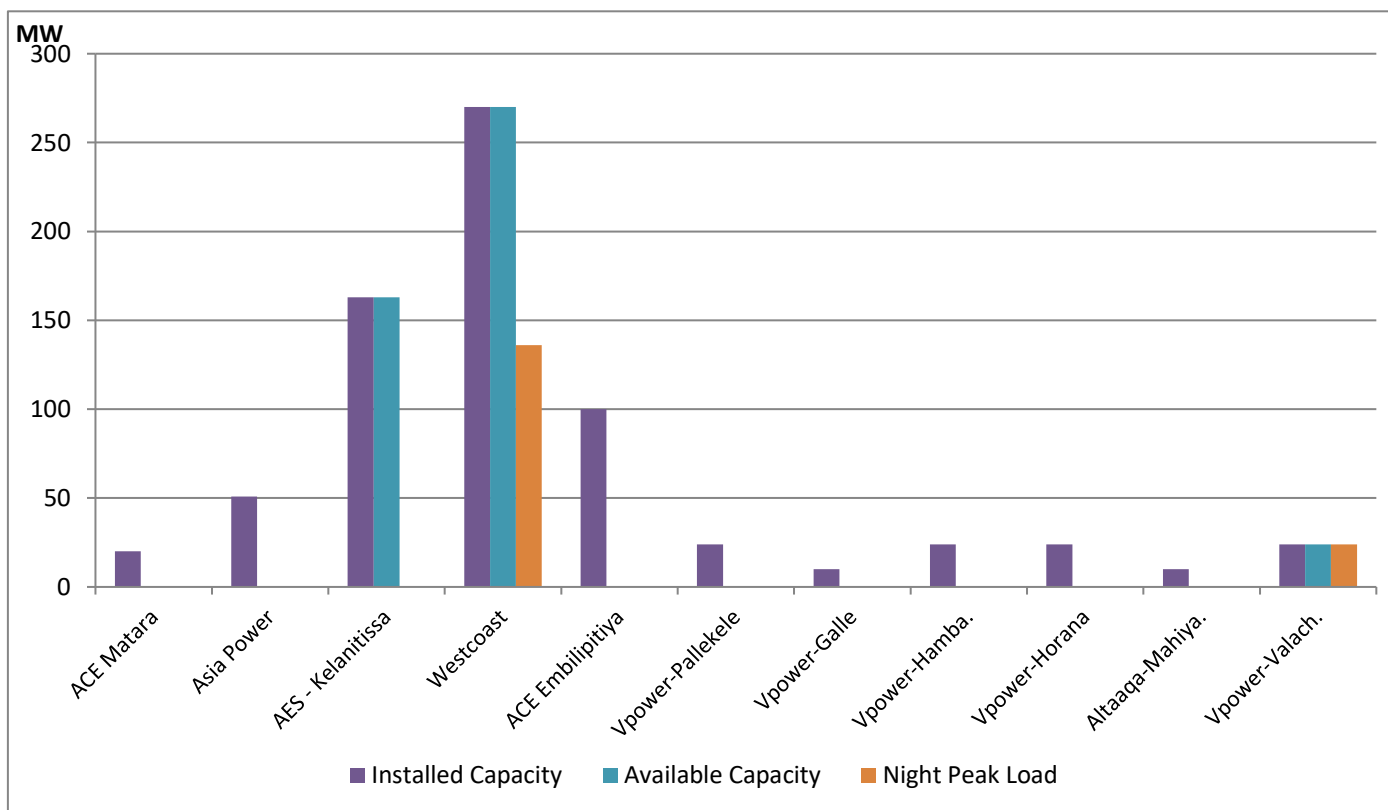
ACE Embilipitiya, ACE Matara, Asia Power, V Power Pallekale, Vpower Galle, V Power Horana, Vpower Hambantota and Altaqa Mahiyangana are not available due to expiration of PPAs



Available Generation is estimated based on plant availability at 6.00am on

May 29, 2021

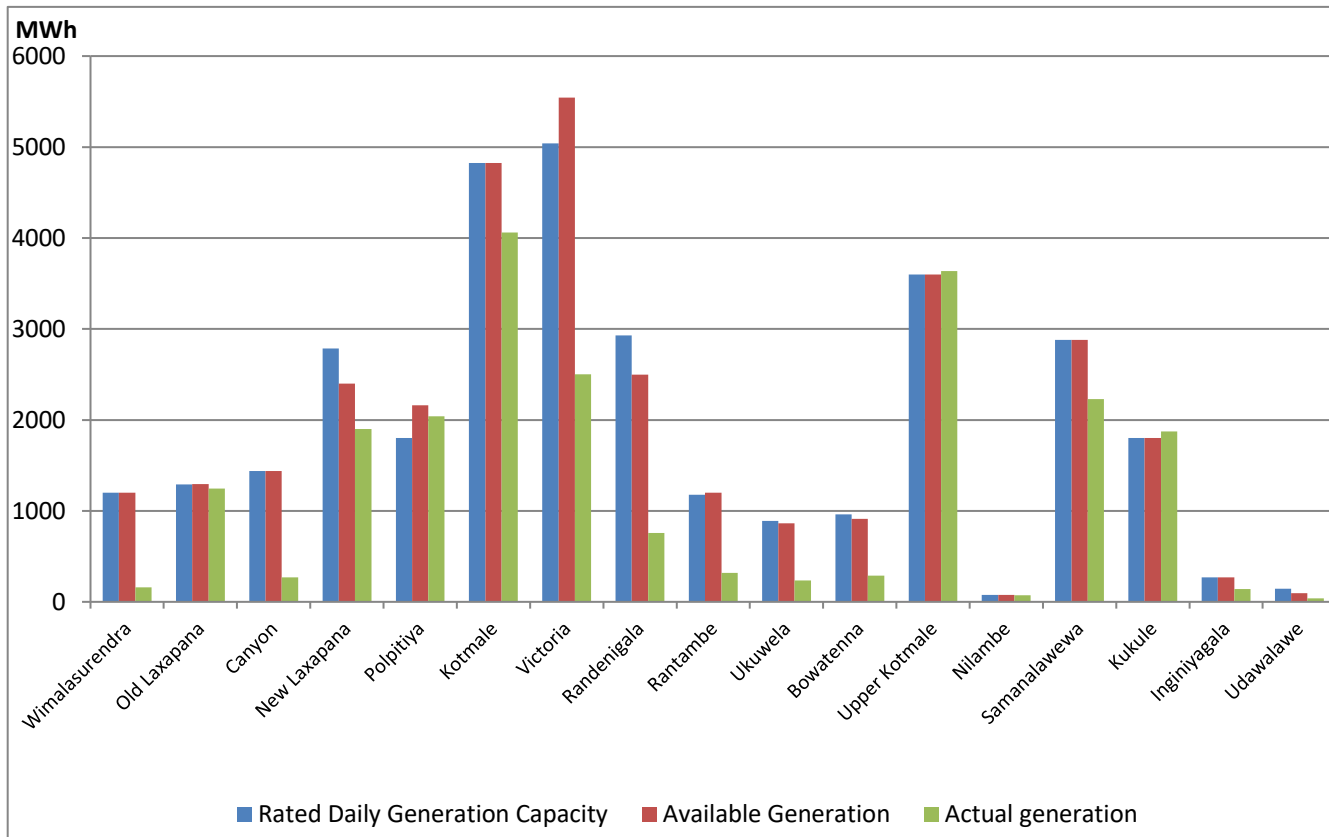
IPP Thermal Plant Loading at the Night Peak



Note- Plant availability is recorded at 6.00 am on May 29, 2021

Major Hydro Plant Dispatch

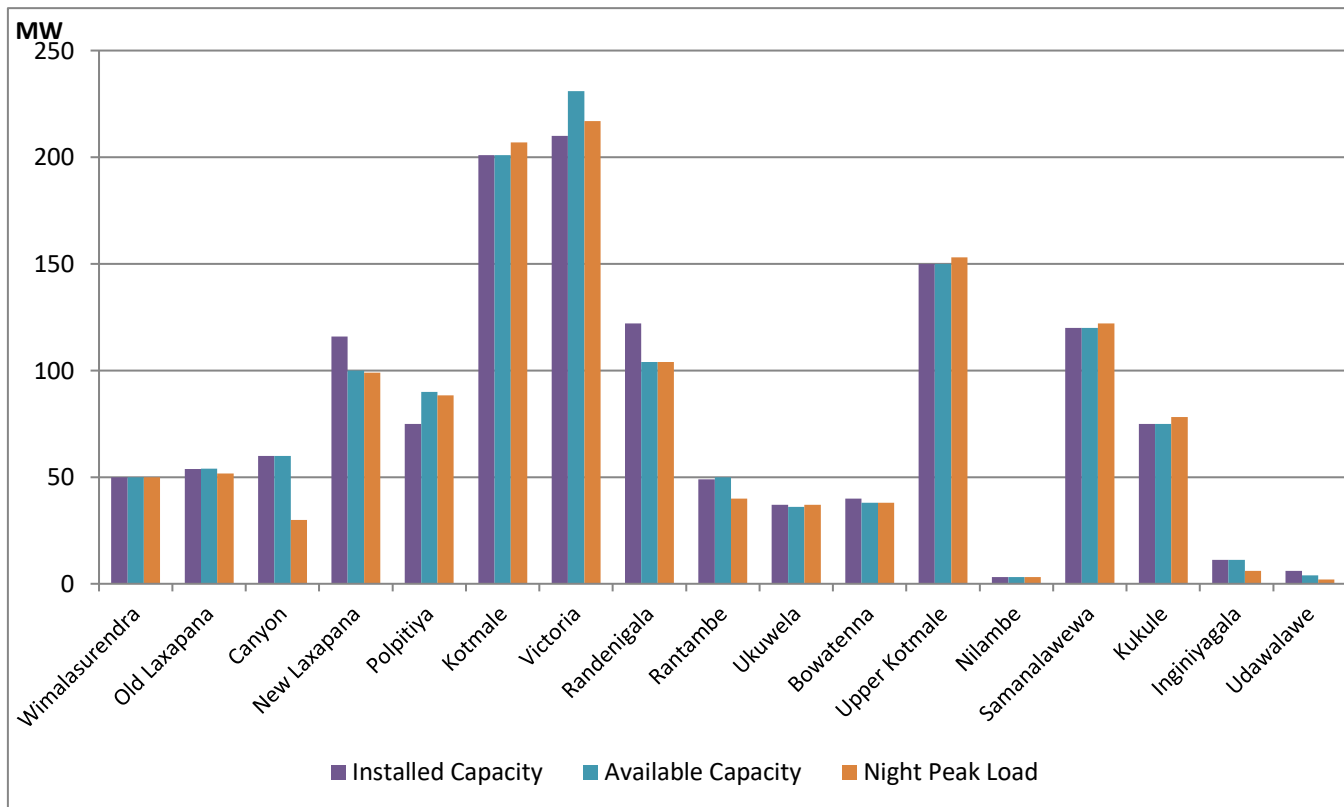
May 28, 2021



Note- Available Generation is estimated based on plant availability at 6.00am on May 29, 2021

Major Hydro Plant Loading at Night Peak

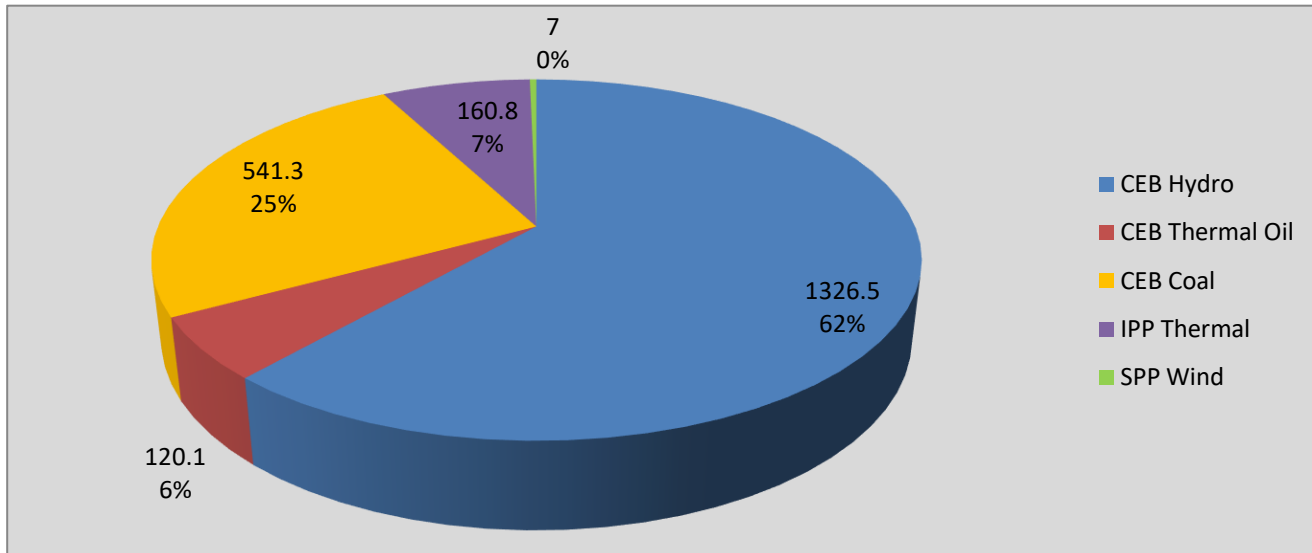
May 28, 2021



Note- Plant availability is recorded at 6.00 am on May 29, 2021

Contribution to the Night Peak in MW

May 28, 2021



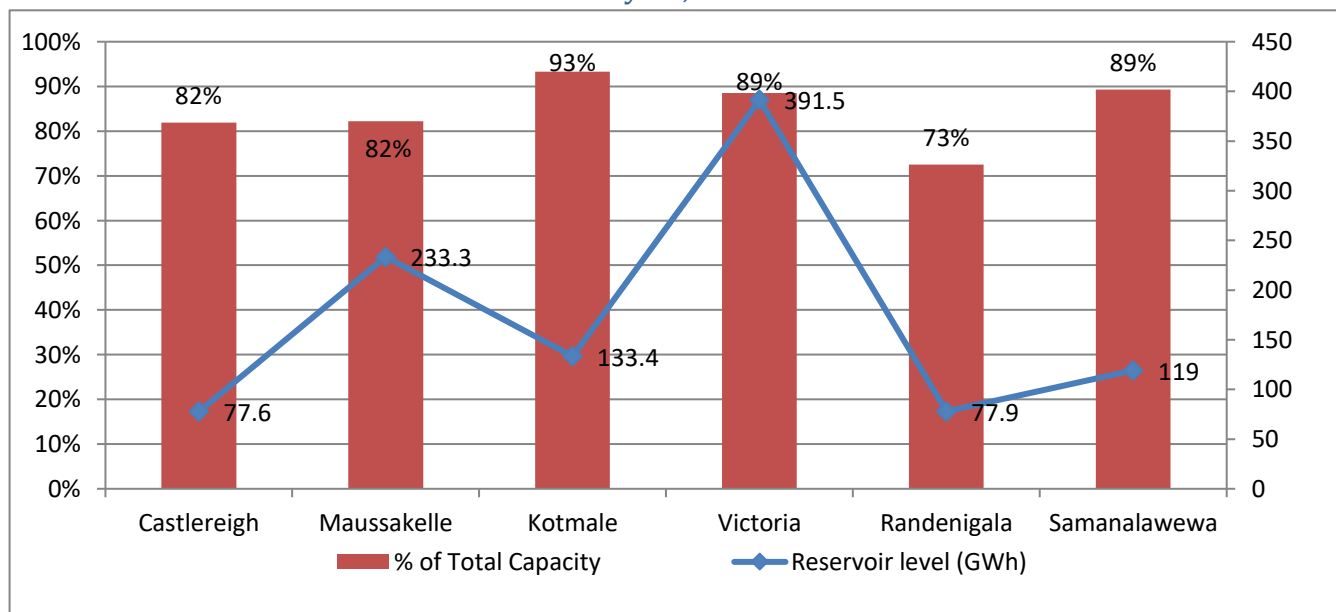
| | | |
|----------------|---------|----|
| Night Peak* | 2,248.5 | MW |
| Day Peak | 1,656.9 | MW |
| Minimum Demand | 1,096.3 | MW |

Notes: *The above chart pattern and night peak figure is presented excluding the contribution of Moragahakanda, other minihydro and biomass power plants

**Day peak and Minimum demand includes the contribution from Moragahakanda, wind and solar plants

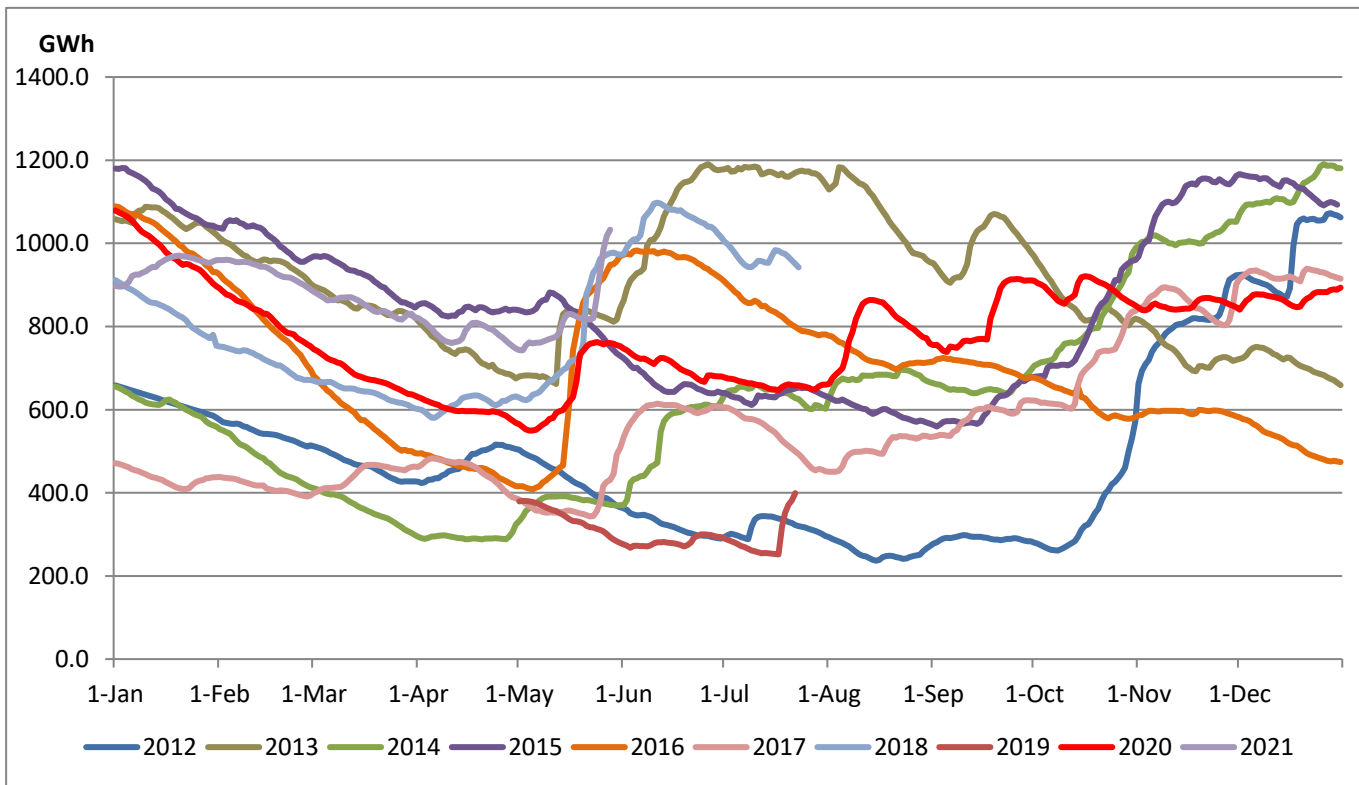
* in addition to the night peak figure presented above, Moragahakanda plant, other MiniHydro and Biomass Plants of installed capacity 181.00 MW has recorded total 159.80 MW at night peak

Reservoir Levels - as at 06.00 Hr on May 29, 2021



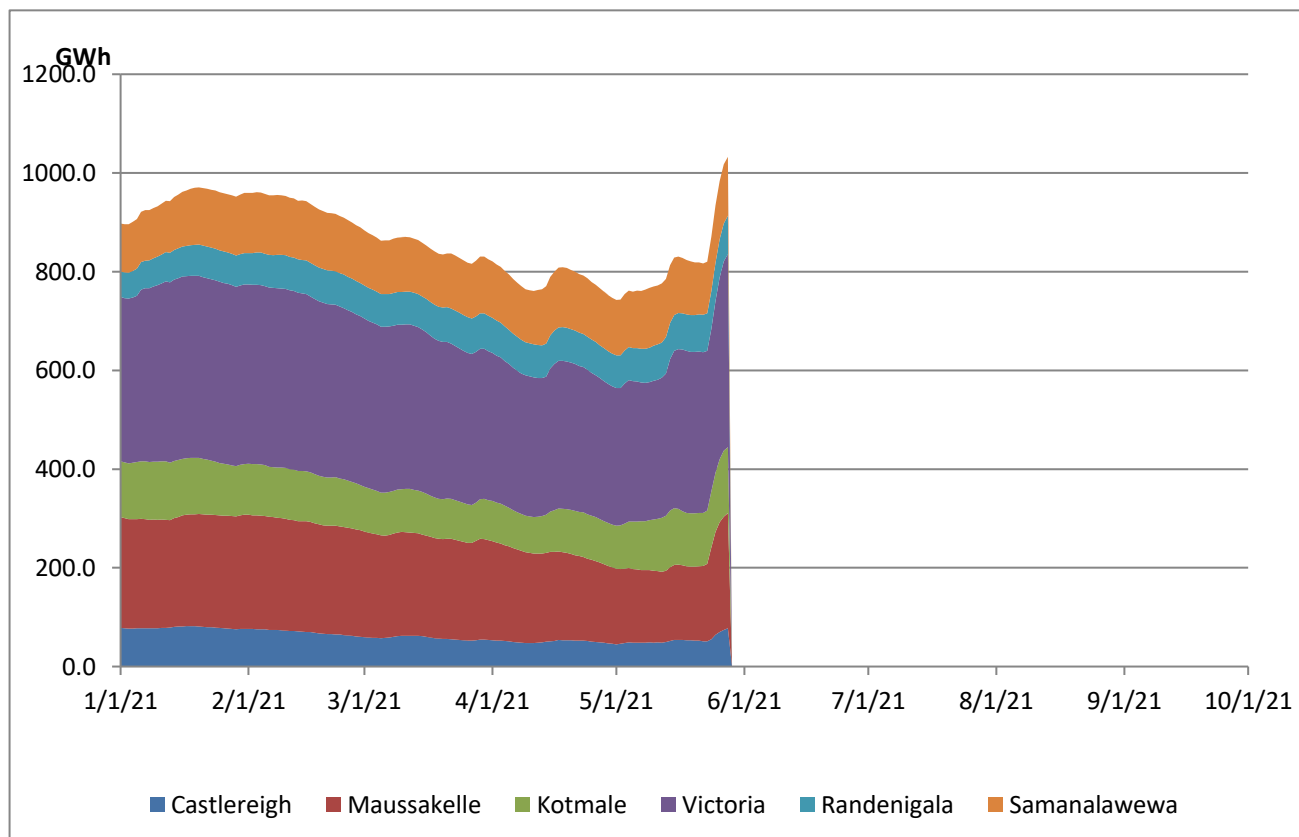
| | |
|----------------------------|--------|
| Total Reservoir Level(GWh) | 1032.7 |
| % of Total capacity | 85.7% |

Comparison of Total Reservoir Storage Levels with Past Years

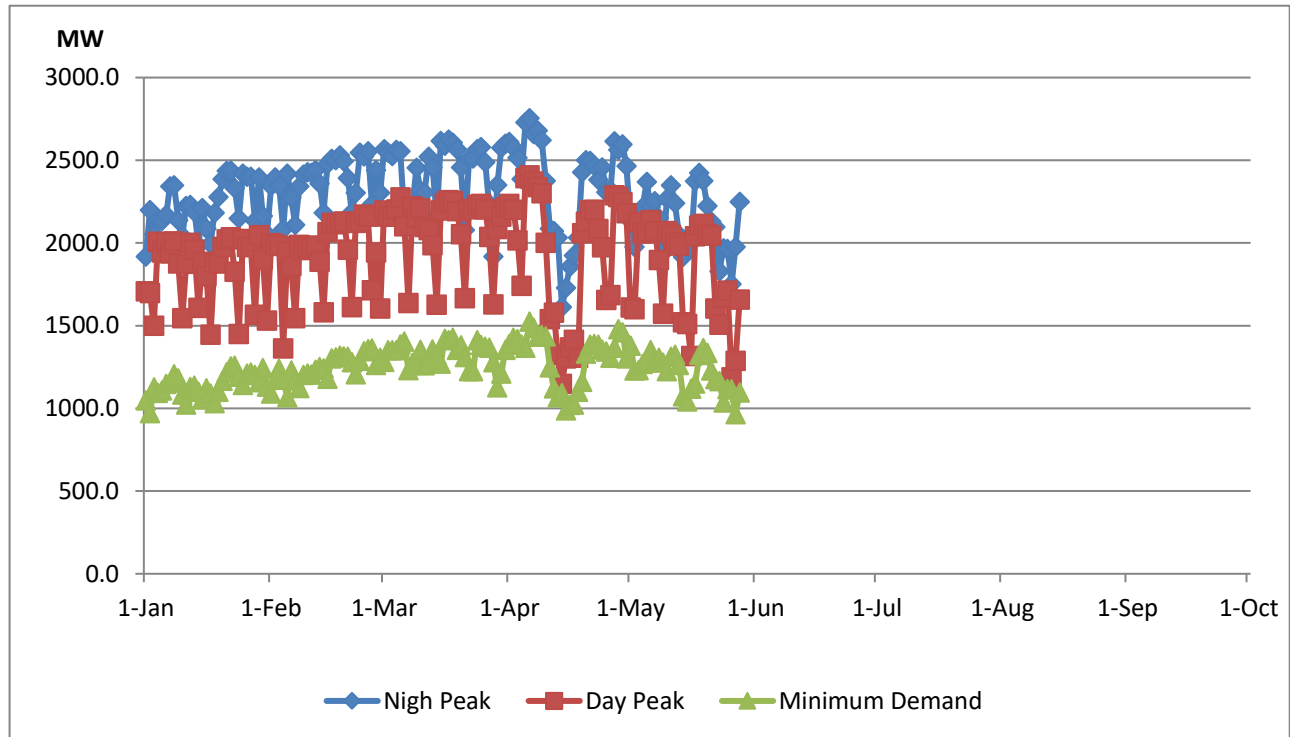


Data for 2018 and 2019 are only available for part of year.

Variation of Major Hydro Reservoir Levels in the current year (GWh)



Variation of Demand during the current year



Notes:

The night peak is excluding the contribution from Minihydro and biomass power plants

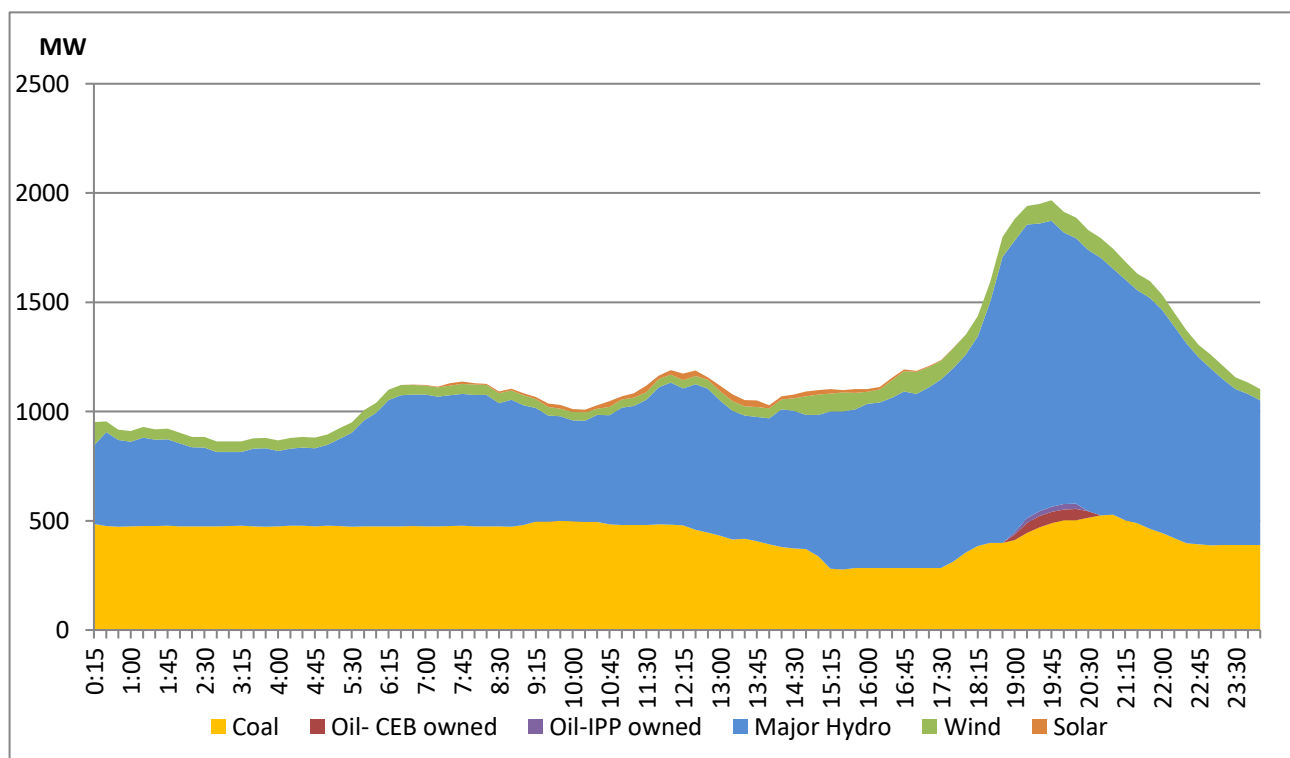
Day peak and minimum demand graphs includes the contribution from Moragahakanda power plant

All graphs include the contribution from telemetered solar and wind plants

Daily Load Curve of the Previous day

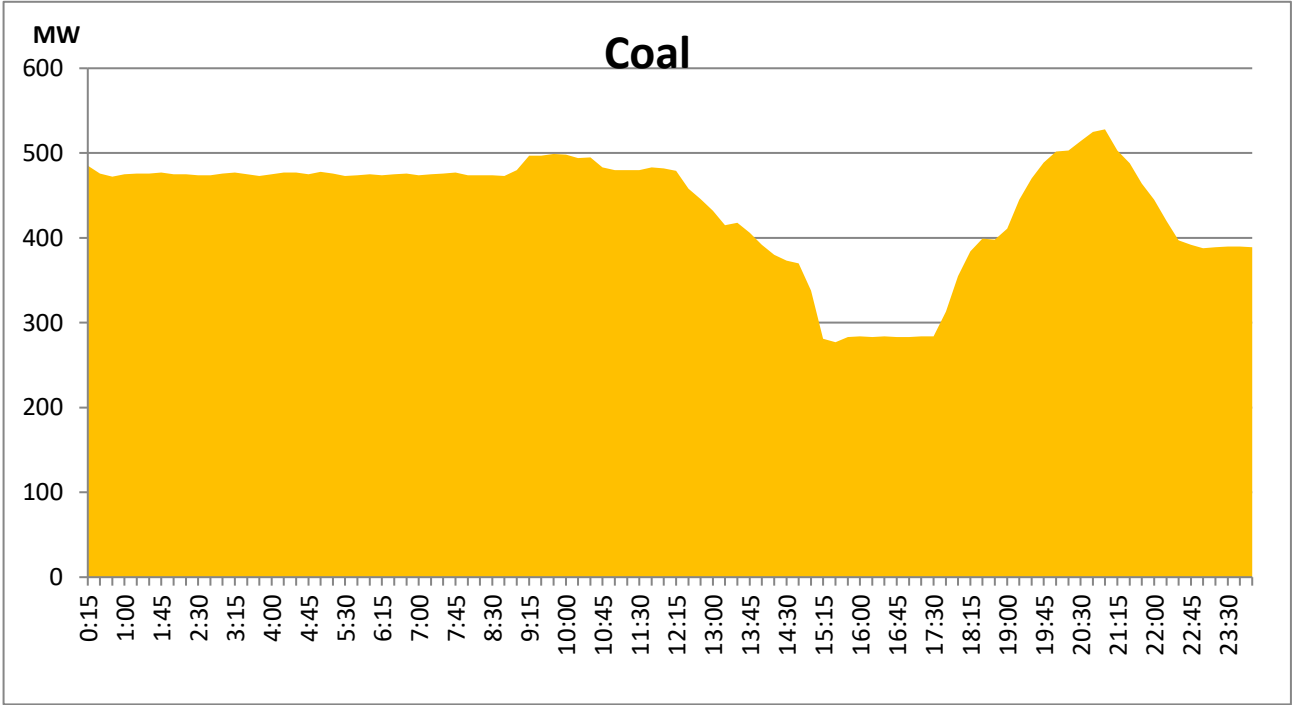
May 27, 2021

Solar and wind data is based on Telemetered Power Stations only



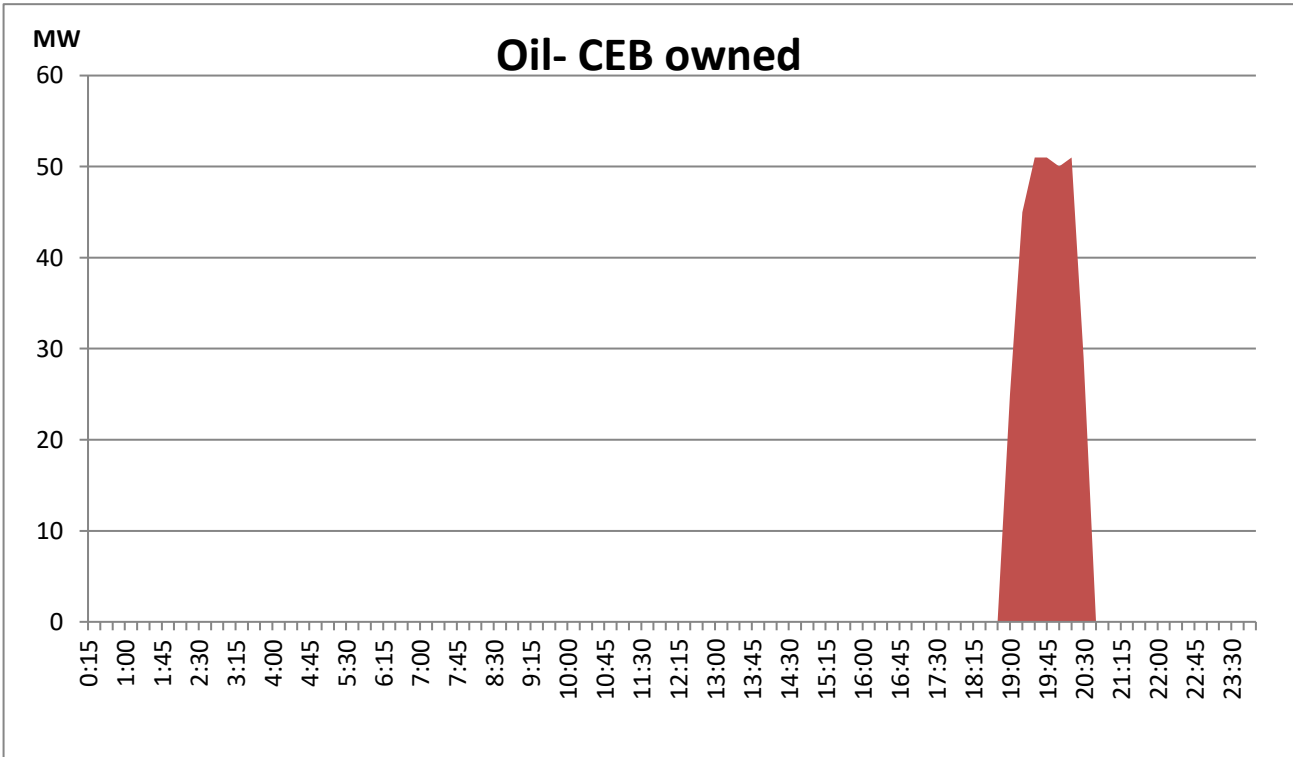
Coal Generation during the Previous day

May 27, 2021



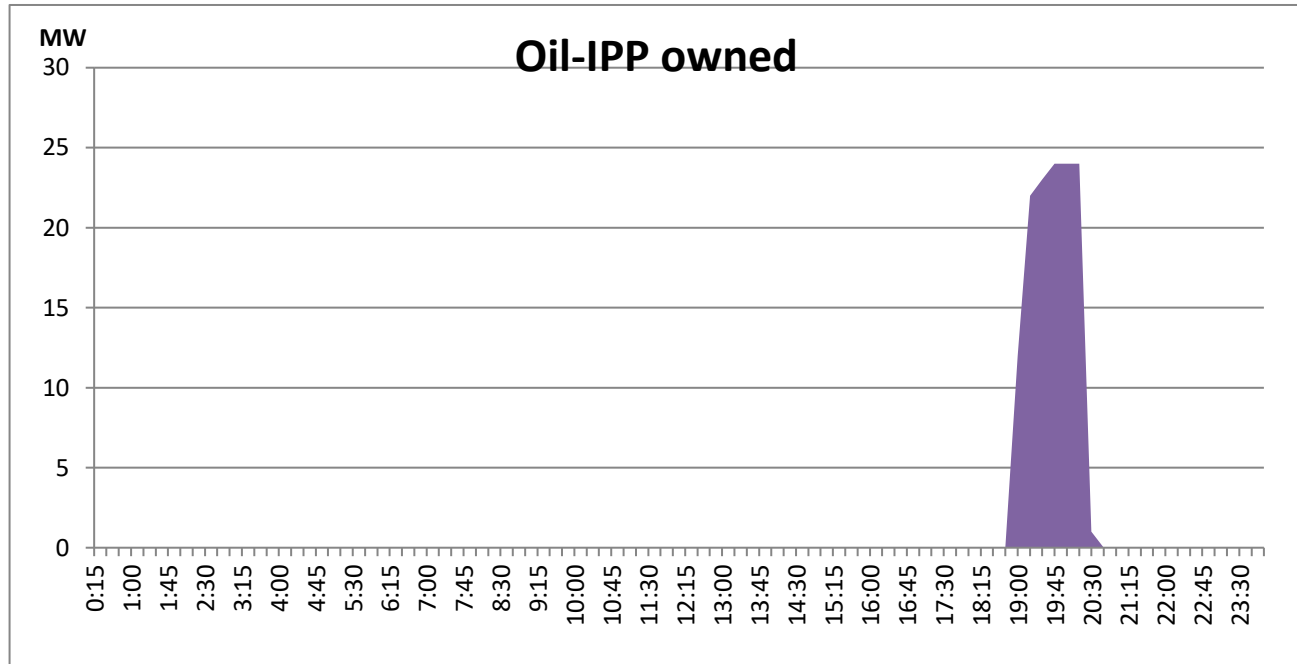
CEB Oil Plant Generation during the Previous day

May 27, 2021



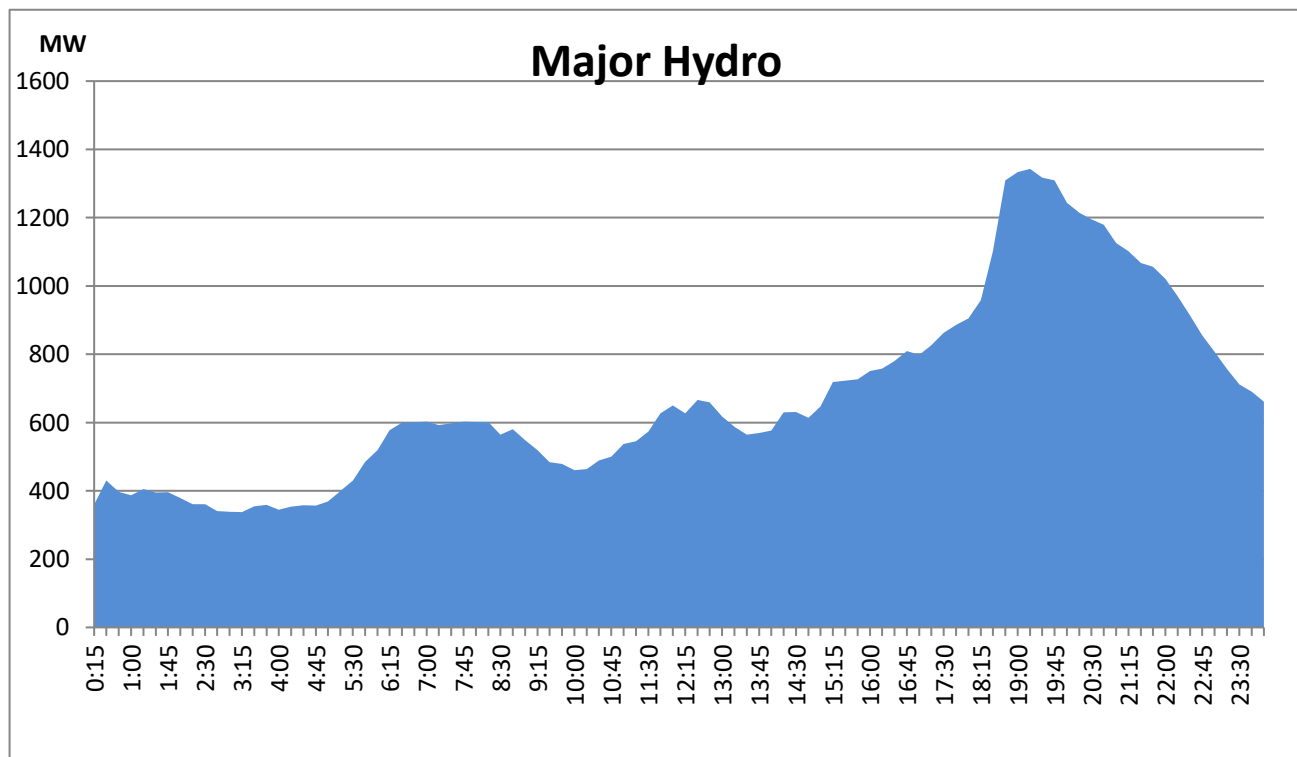
IPP Oil Plant Generation during the Previous day

May 27, 2021



Major Hydro Generation during the Previous day

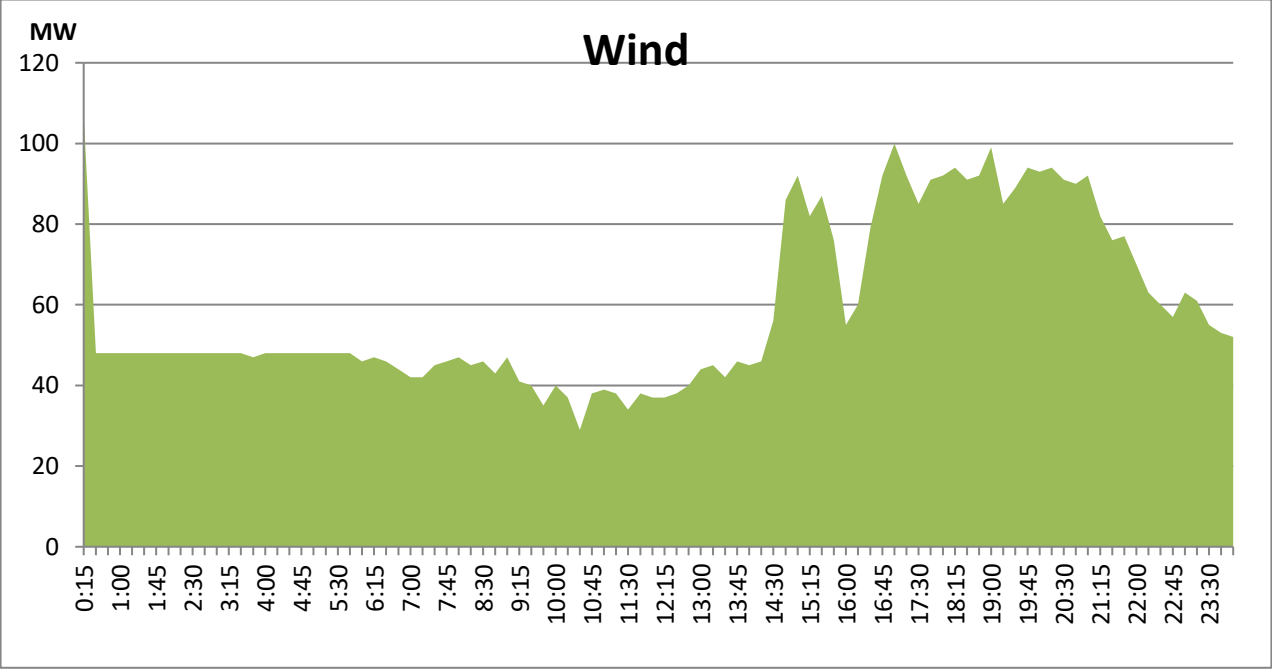
May 27, 2021



Wind Generation during the Previous day

May 27, 2021

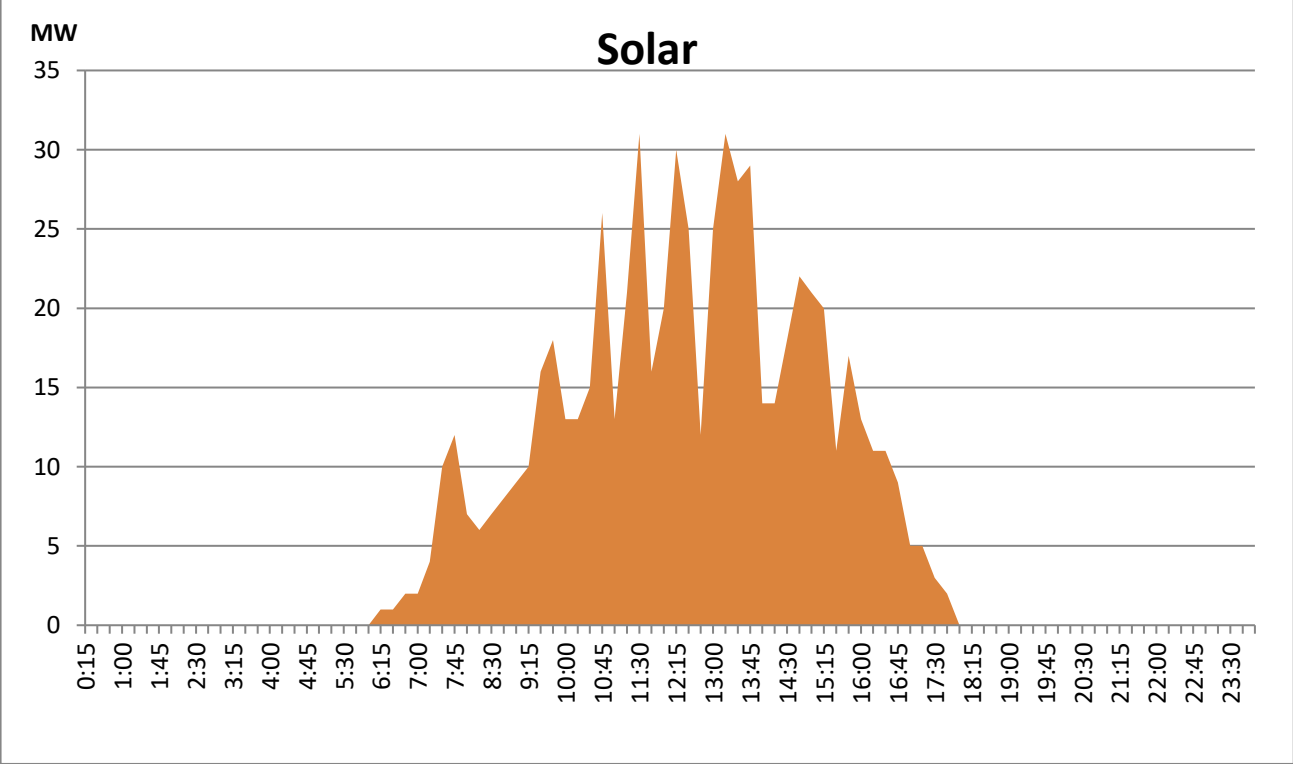
Based on Telemetered Power Stations only



Solar Generation during the Previous day

May 27, 2021

Based on Telemetered Power Stations only



Summary of Major Plant performance

| Plant | Installed Capacity (MW) | Plant Availability (MW) | Night peak Load (MW) | Plant Dispatch (GWh) |
|--------------------|----------------------------|----------------------------|-------------------------|-------------------------|
| Wimalasurendra | 50.00 | 50.00 | 50.00 | 161.00 |
| Old Laxapana | 53.80 | 54.00 | 51.70 | 1,245.00 |
| Canyon | 60.00 | 60.00 | 30.00 | 270.00 |
| New Laxapana | 116.00 | 100.00 | 99.00 | 1,898.00 |
| Polpitiya | 75.00 | 90.00 | 88.30 | 2,040.00 |
| Kotmale | 201.00 | 201.00 | 207.00 | 4,060.00 |
| Victoria | 210.00 | 231.00 | 217.00 | 2,500.00 |
| Randenigala | 122.00 | 104.00 | 104.00 | 759.00 |
| Rantambe | 49.00 | 50.00 | 40.00 | 320.00 |
| Ukuwela | 37.00 | 36.00 | 37.00 | 234.00 |
| Bowatenna | 40.00 | 38.00 | 38.00 | 289.00 |
| Upper Kotmale | 150.00 | 150.00 | 153.00 | 3,637.00 |
| Nilambe | 3.20 | 3.20 | 3.20 | 73.00 |
| Samanalawewa | 120.00 | 120.00 | 122.00 | 2,230.00 |
| Kukule | 75.00 | 75.00 | 78.20 | 1,873.00 |
| Inginiyagala | 11.25 | 11.25 | 6.10 | 140.00 |
| Udawalawe | 6.00 | 4.00 | 2.00 | 39.00 |
| Puttalam Coal I | 275.00 | 270.00 | 271.00 | 5,345.00 |
| Puttalam Coal II | 275.00 | 270.00 | 271.00 | 5,214.00 |
| Puttalam Coal III | 275.00 | - | - | - |
| KPS Small GTs | 65.20 | 32.00 | - | - |
| KPS GT 7 | 113.00 | 115.00 | - | - |
| KCCP | 161.00 | 150.00 | - | - |
| Sapugaskanda A | 69.60 | 50.00 | - | - |
| Sapugaskanda B | 69.60 | 63.00 | - | - |
| Uthura Janani | 26.01 | 24.00 | 23.40 | 90.00 |
| Barge CEB | 60.00 | 60.00 | 60.00 | 218.00 |
| CEB-Thulhiriya | 10.00 | 7.20 | 7.00 | 12.00 |
| CEB-Kolonnawa | 20.00 | 12.80 | 14.00 | 24.00 |
| CEB-Mathugama | 20.00 | 14.40 | 15.00 | 38.00 |
| ACE Matara | 20.00 | - | - | - |
| Asia Power | 50.80 | - | - | - |
| AES - Kelanitissa | 163.00 | 163.00 | - | - |
| Westcoast | 270.00 | 270.00 | 136.00 | 574.00 |
| ACE Embilipitiya | 100.00 | - | - | - |
| Vpower-Pallekele | 24.00 | - | - | - |
| Vpower-Galle | 10.00 | - | - | - |
| Vpower-Hamba. | 24.00 | - | - | - |
| Vpower-Horana | 24.00 | - | - | - |
| Altaaqa-Mahiya. | 10.00 | - | - | - |
| Vpower-Valach. | 24.00 | 24.00 | 24.00 | 47.00 |
| Solar | 58.00 | | - | 341.00 |
| Wind | 128.00 | | 99.70 | 1,731.00 |
| MH and BM | 394.00 | | 159.80 | Not available |
| Total without NCRE | 3,538.46 | 2,902.85 | | |

Night peak load of MH and BM only include loading of Minihydro plants of total capacity MW 181

Installed capacity of Solar, wind, Mini-hydro and Biomass plants are as of end of December 2019

Plant availability is the availability recorded at 6 am on

May 29, 2021

Thermal Plant Fuel types

| Power Station | Primary Fuel |
|--------------------------------|-----------------|
| CEB Thermal | |
| Sapugaskanda 1 | Heavy Fuel |
| Sapugaskanda 2 | Heavy Fuel |
| Kelanitissa Small Gas Turbines | Auto Diesel |
| GT 7 - Kelanitissa | Auto Diesel |
| Kelanitissa CCY | Naptha & Diesel |
| Lakvijaya 1 | Coal |
| Lakvijaya 2 | Coal |
| Lakvijaya 3 | Coal |
| Uthuru Janani | Heavy Fuel |
| Barge CEB | Furnace Oil |
| | |

| Power Station | Primary Fuel |
|------------------|----------------------------|
| Private Thermal | |
| Asia Power | Heavy Fuel |
| Sojitz - | Auto Diesel |
| West Coast | Low Sulphur Furnace oil |
| | |
| ACE Embilipitiya | Furnace Oil |

Major Incidents during the day -as reported by CEB morning of

May 29, 2021

- 1) Kukule pond spilling continues to the present hour.
- 2) Upper Kotmale Pond spilling stopped at 19:33 hrs.
- 3) WPS T/F 02 tripped at 21:06 hrs due to operation of master trip relay, T/F is yet to be energized.