

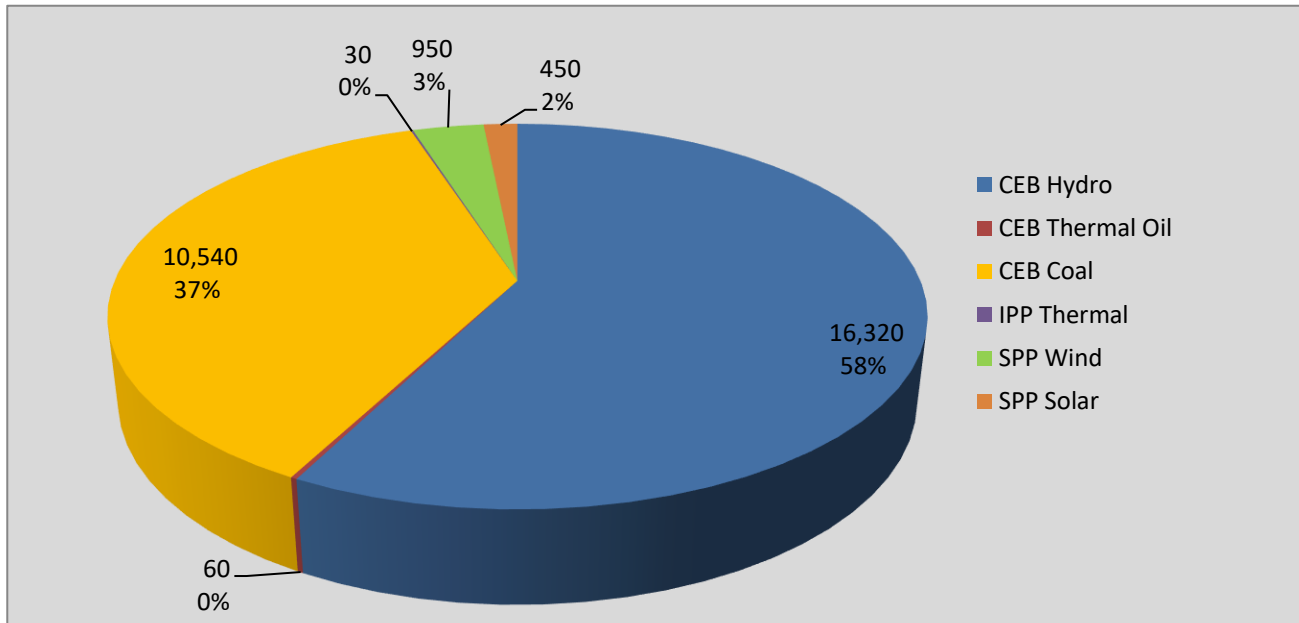
# **Generation and Reservoirs Statistics**

**May 27, 2021**



**PUBLIC UTILITIES COMMISSION OF SRI LANKA**

## Daily Generation Mix in MWh



**Total Generation** **29,460 MWh**

Note: Generation from other SPPs (Mini Hydro and Biomass) is not included

## Cumulative Dispatch

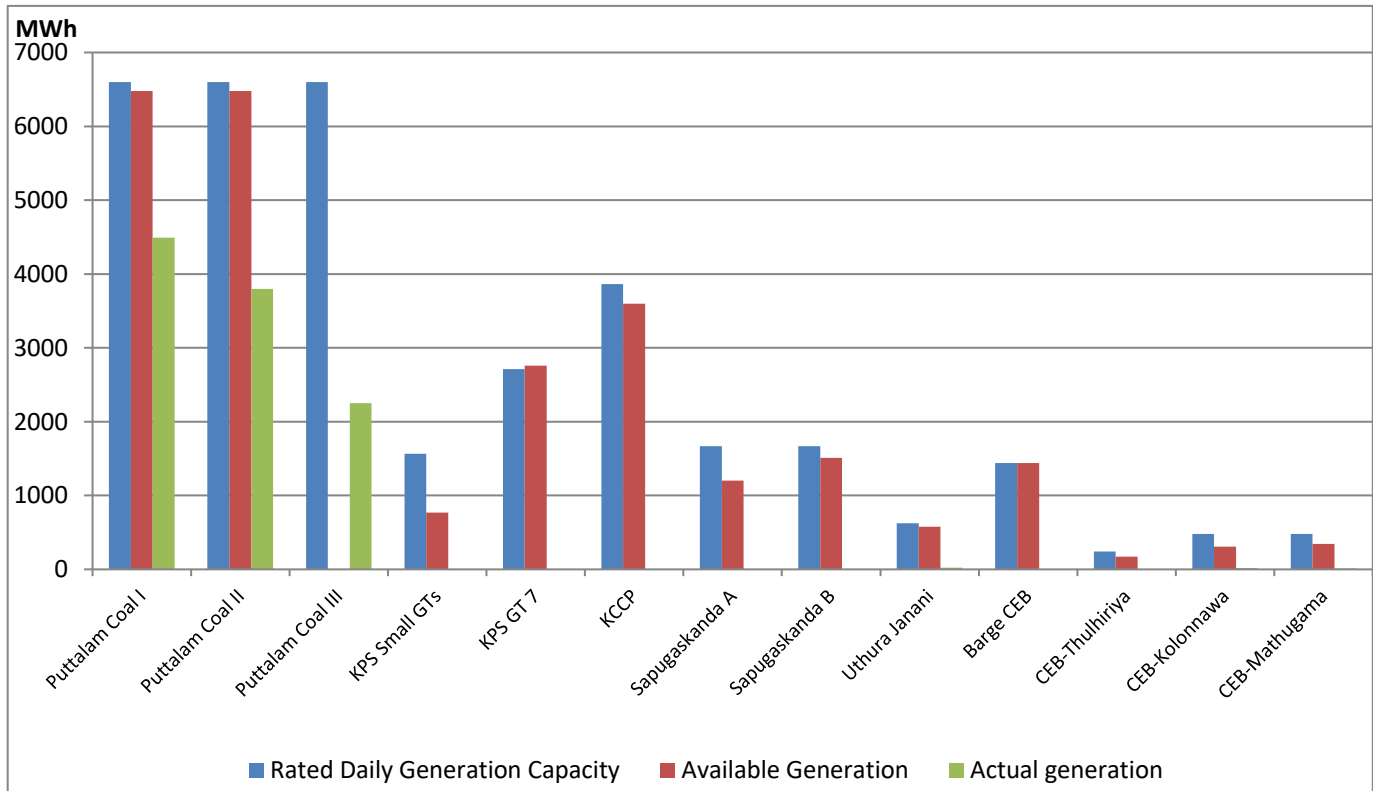
Note: Generation from other SPPs (Mini Hydro, small scale Solar and Biomass) is not included

### For Current Month

Category	Dispatch (GWh)	Percentage
CEB Hydro	390.0	38.11%
CEB Thermal Oil	80.8	7.89%
CEB Coal	465.7	45.51%
IPP Thermal	32.8	3.20%
SPP Wind	14.5	1.42%
SPP Solar	7.4	0.72%
<b>Total</b>	<b>1,023.4</b>	

### For Current Year

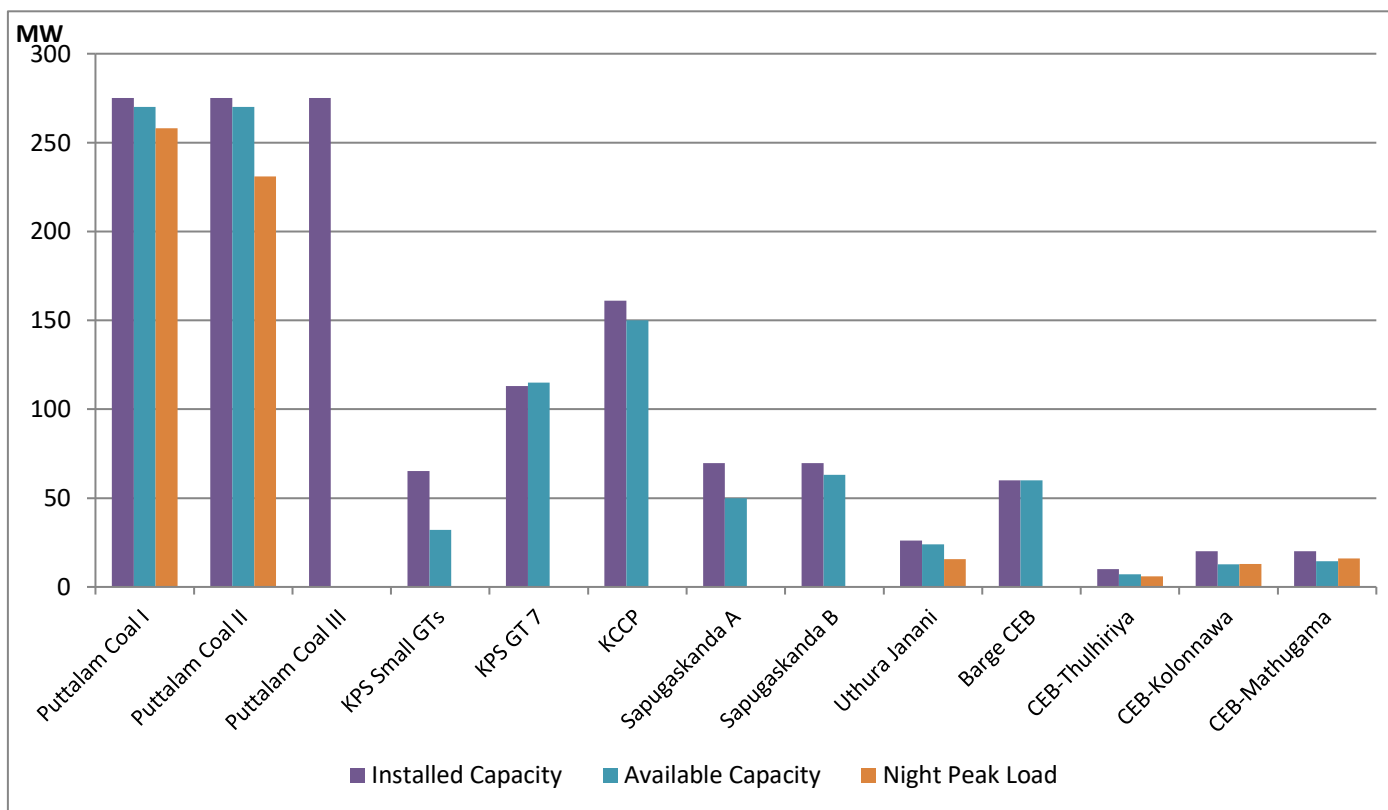
Category	Dispatch (GWh)	Percentage
CEB Hydro	1,403.8	23.46%
CEB Thermal Oil	689.4	11.52%
CEB Coal	2,730.2	45.64%
IPP Thermal	1,029.8	17.21%
SPP Wind	48.6	0.81%
SPP Solar	38.3	0.64%
<b>Total</b>	<b>5,982.6</b>	



Available Generation is estimated based on plant availability at 6.00am on

May 28, 2021

CEB Thermal Plant Loading at the Night Peak

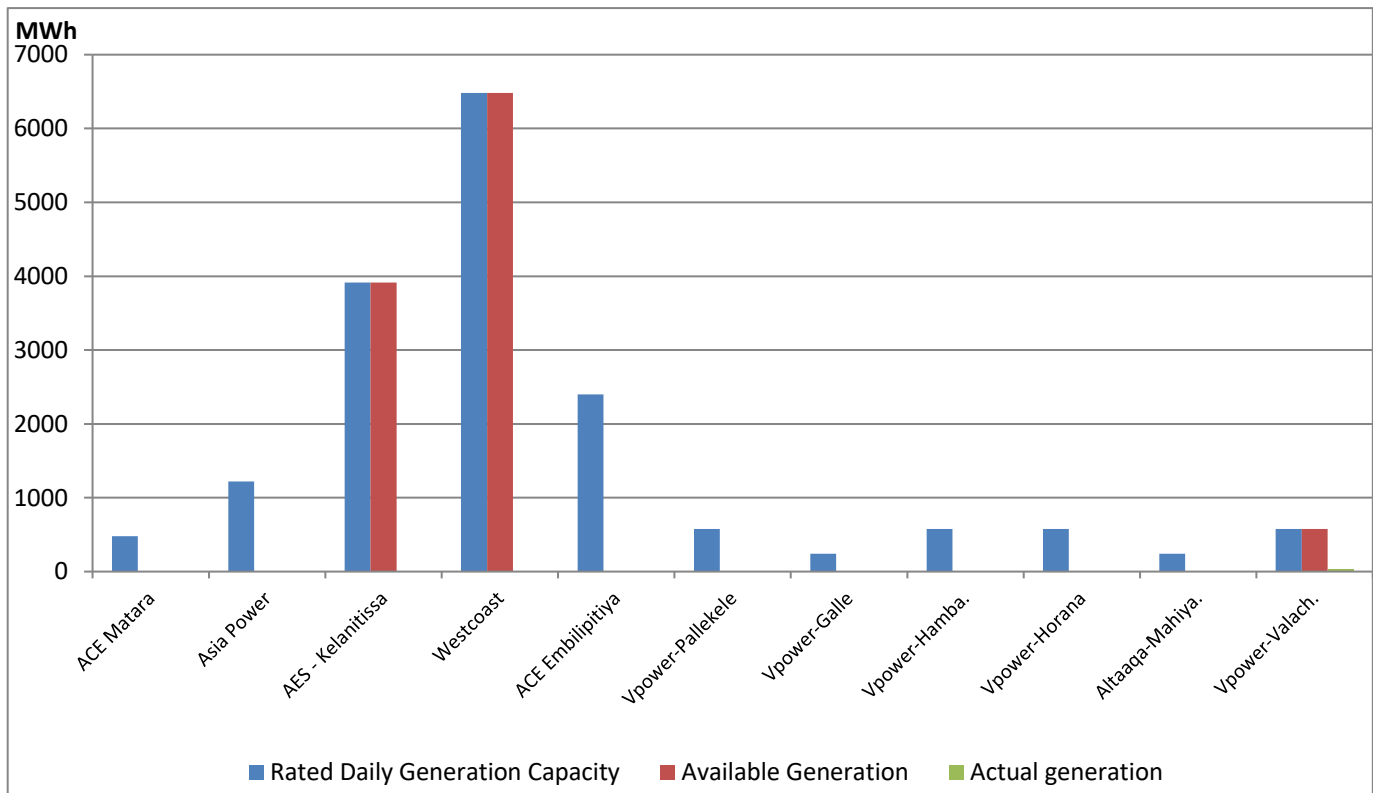


Note- Plant availability is recorded at 6.00 am on May 28, 2021

## IPP Thermal Plant Dispatch

May 27, 2021

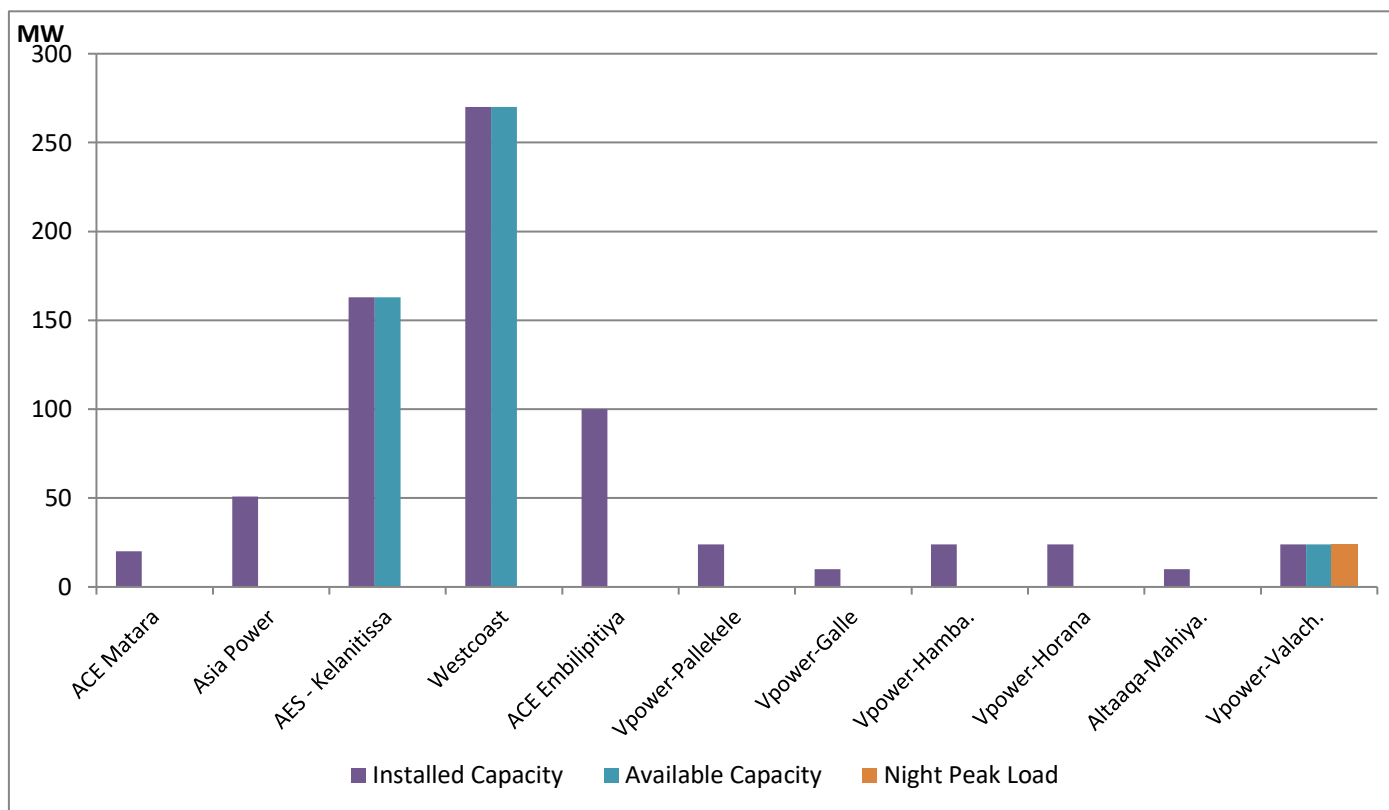
ACE Embilipitiya, ACE Matara, Asia Power, V Power Pallekale, Vpower Galle, V Power Horana, Vpower Hambantota and Altaqa Mahiyangana are not available due to expiration of PPAs



Available Generation is estimated based on plant availability at 6.00am on

May 28, 2021

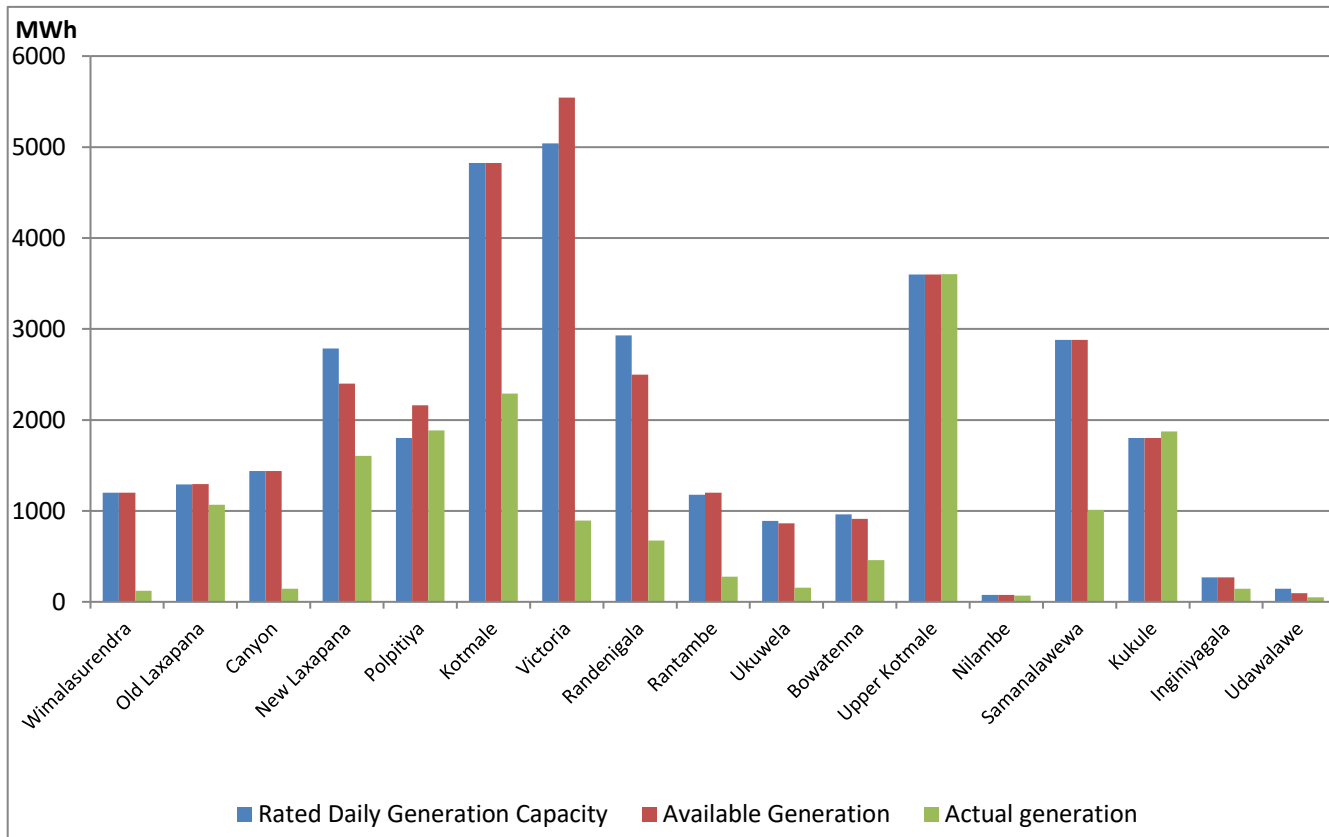
## IPP Thermal Plant Loading at the Night Peak



Note- Plant availability is recorded at 6.00 am on May 28, 2021

## Major Hydro Plant Dispatch

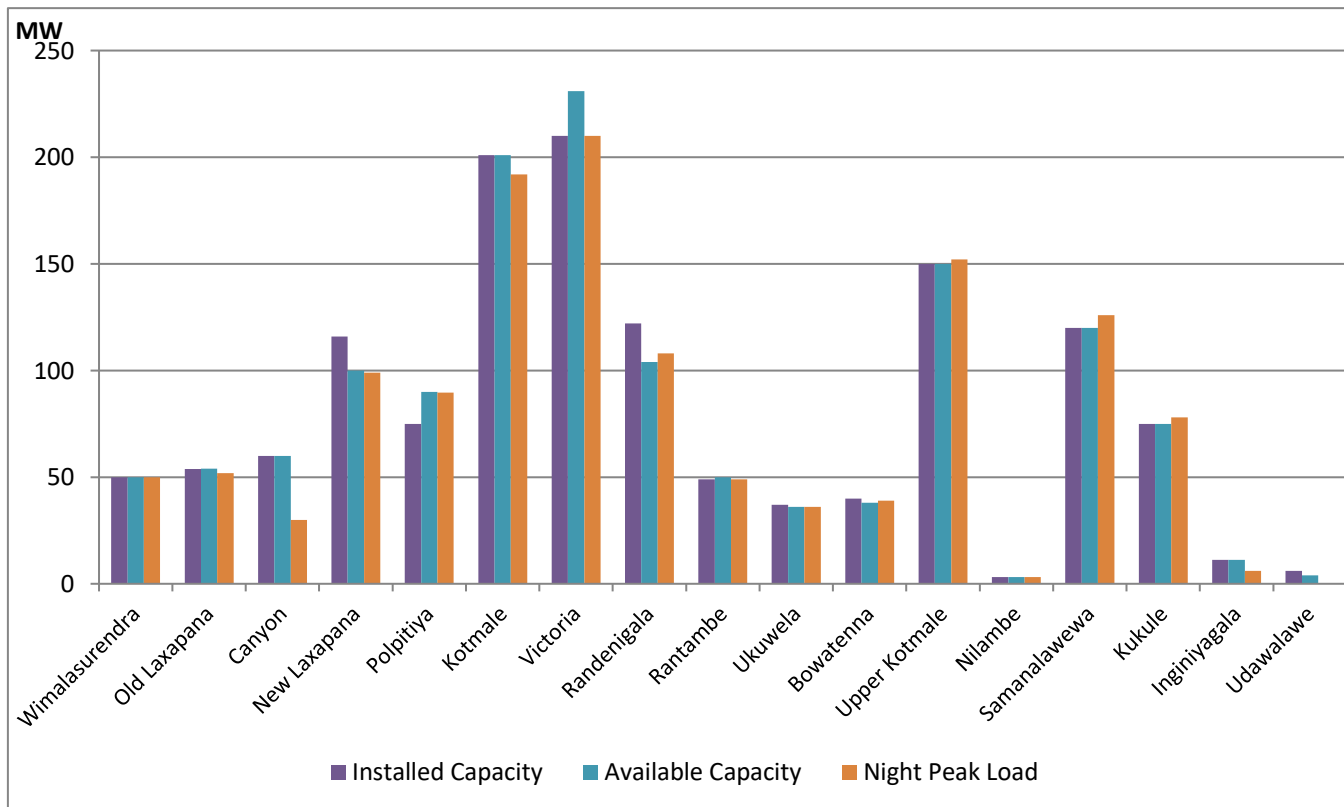
May 27, 2021



Note- Available Generation is estimated based on plant availability at 6.00am on May 28, 2021

## Major Hydro Plant Loading at Night Peak

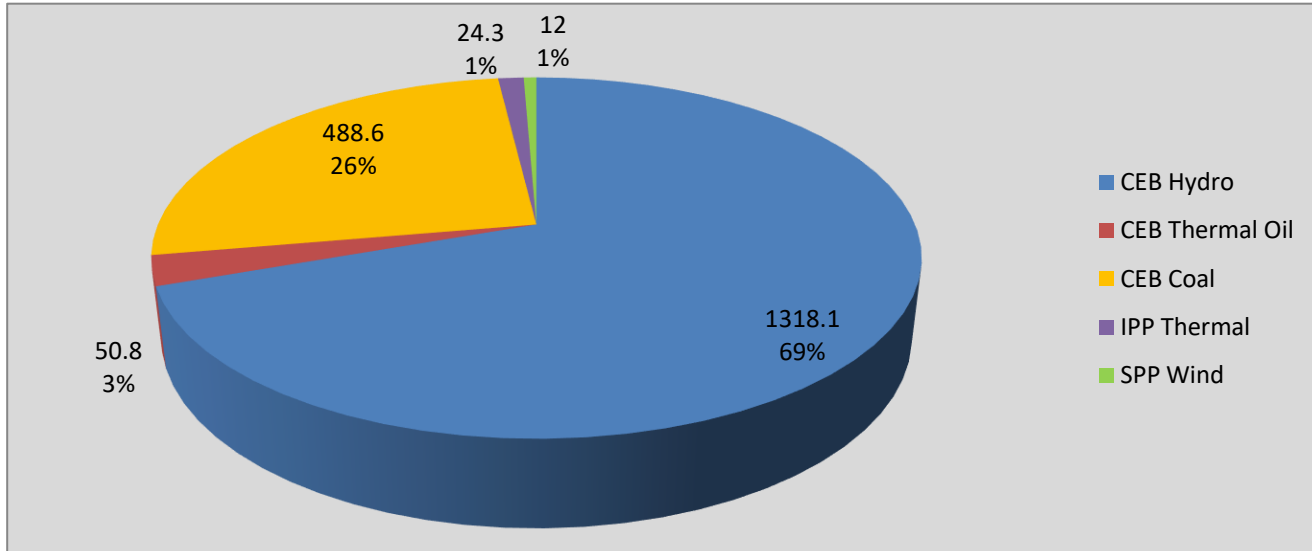
May 27, 2021



Note- Plant availability is recorded at 6.00 am on May 28, 2021

## Contribution to the Night Peak in MW

May 27, 2021



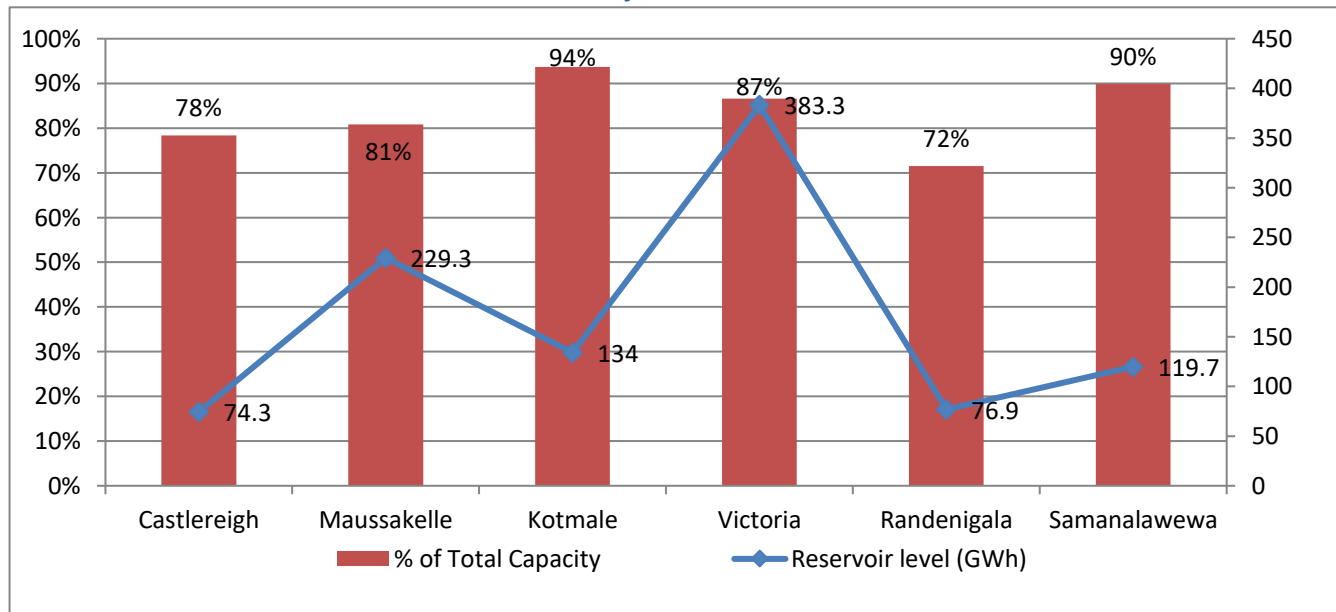
Night Peak*	1,976.1 MW
Day Peak	1,287.5 MW
Minimum Demand	964.2 MW

Notes: \*The above chart pattern and night peak figure is presented excluding the contribution of Moragahakanda, other minihydro and biomass power plants

\*\*Day peak and Minimum demand includes the contribution from Moragahakanda, wind and solar plants

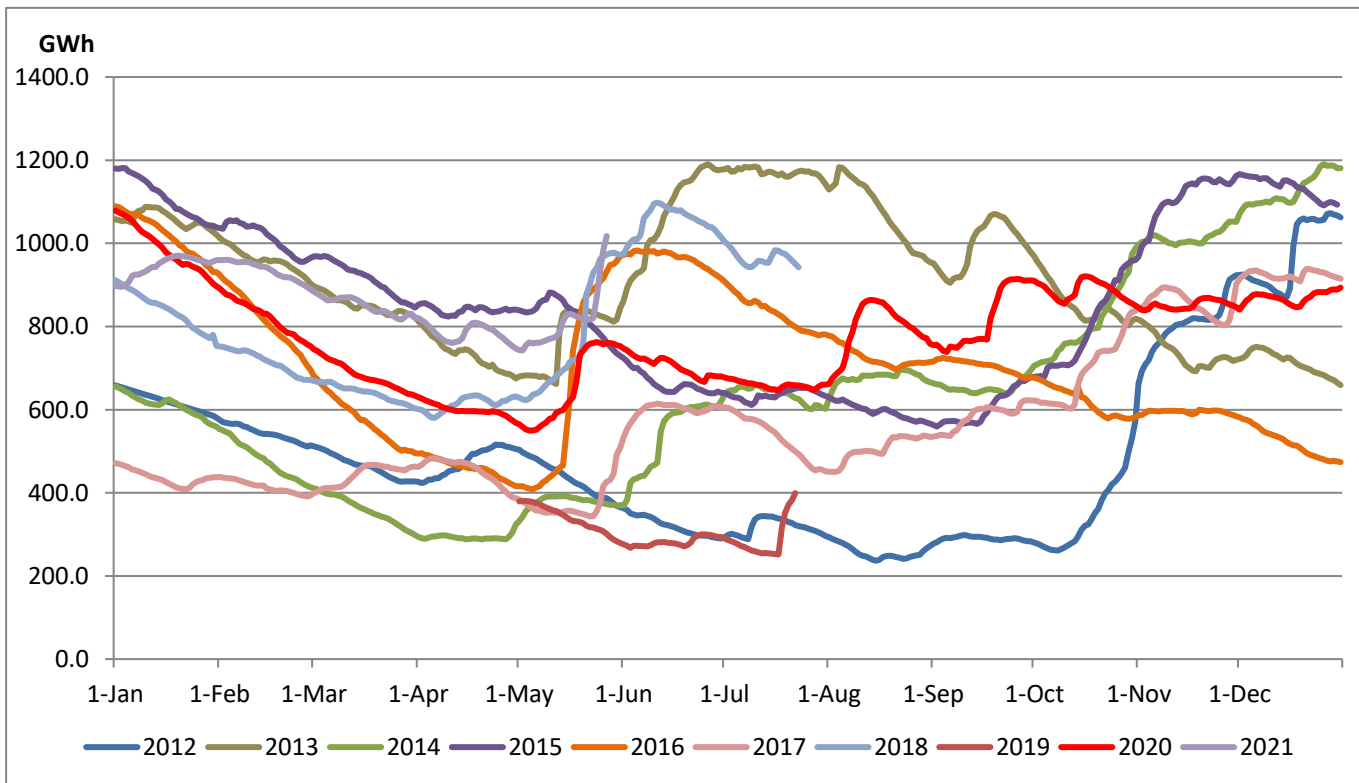
\* in addition to the night peak figure presented above, Moragahakanda plant, other MiniHydro and Biomass Plants of installed capacity 158.00 MW has recorded total 153.40 MW at night peak

## Reservoir Levels - as at 06.00 Hr on May 28, 2021



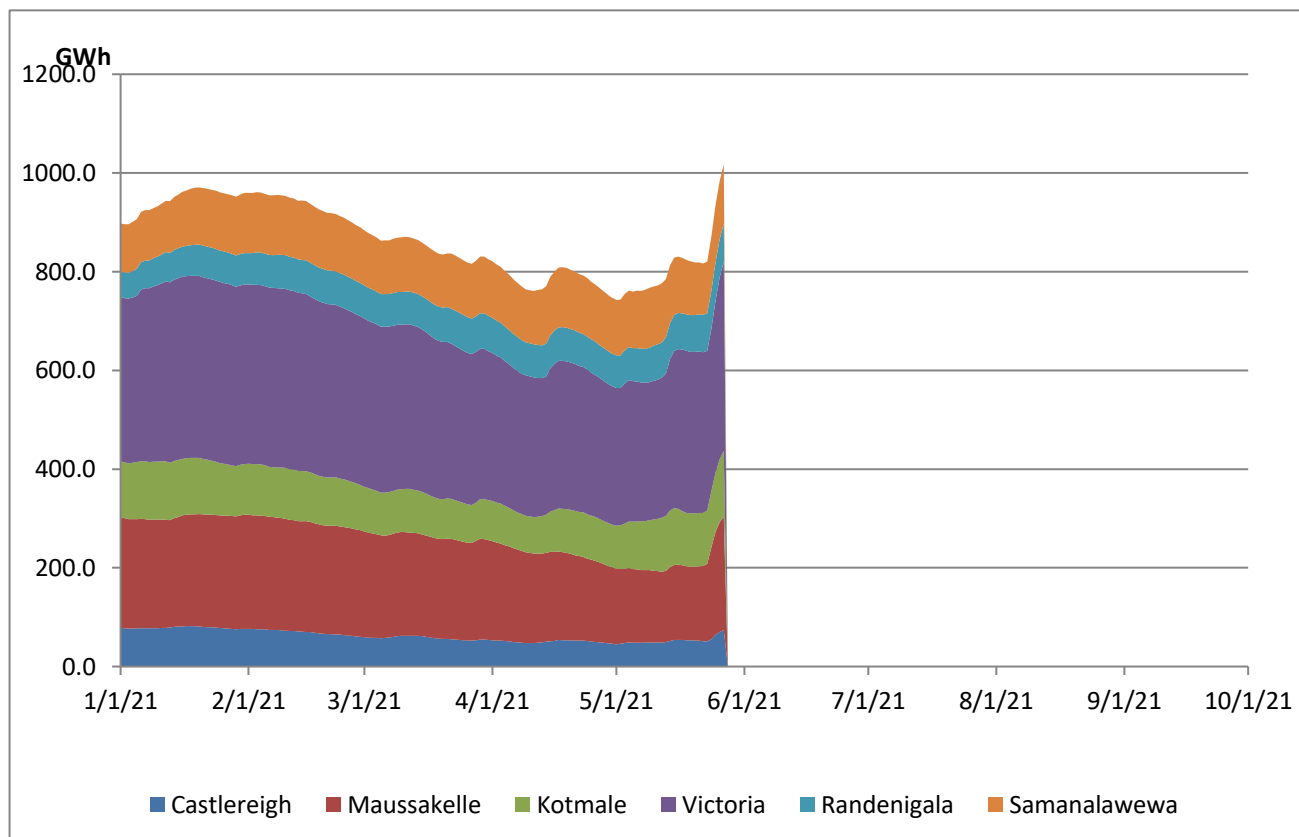
Total Reservoir Level(GWh)	1017.5
% of Total capacity	84.4%

## Comparison of Total Reservoir Storage Levels with Past Years

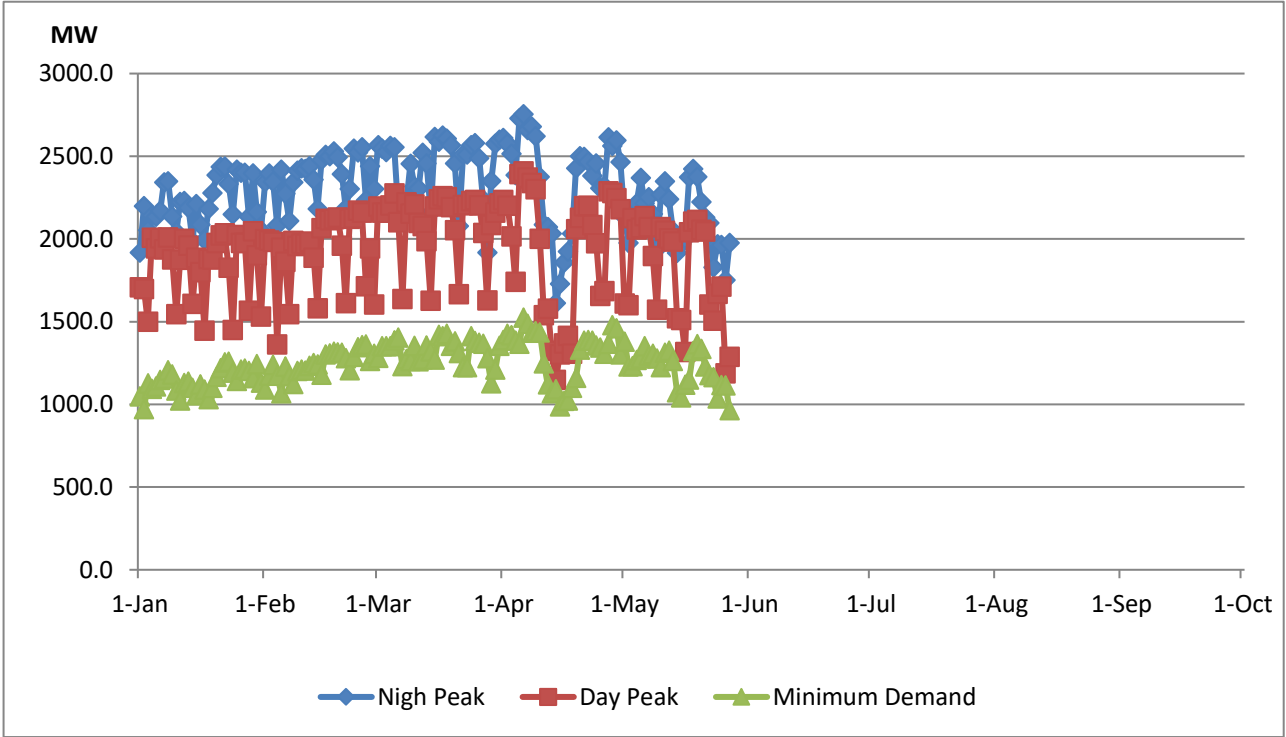


Data for 2018 and 2019 are only available for part of year.

## Variation of Major Hydro Reservoir Levels in the current year (GWh)



### Variation of Demand during the current year



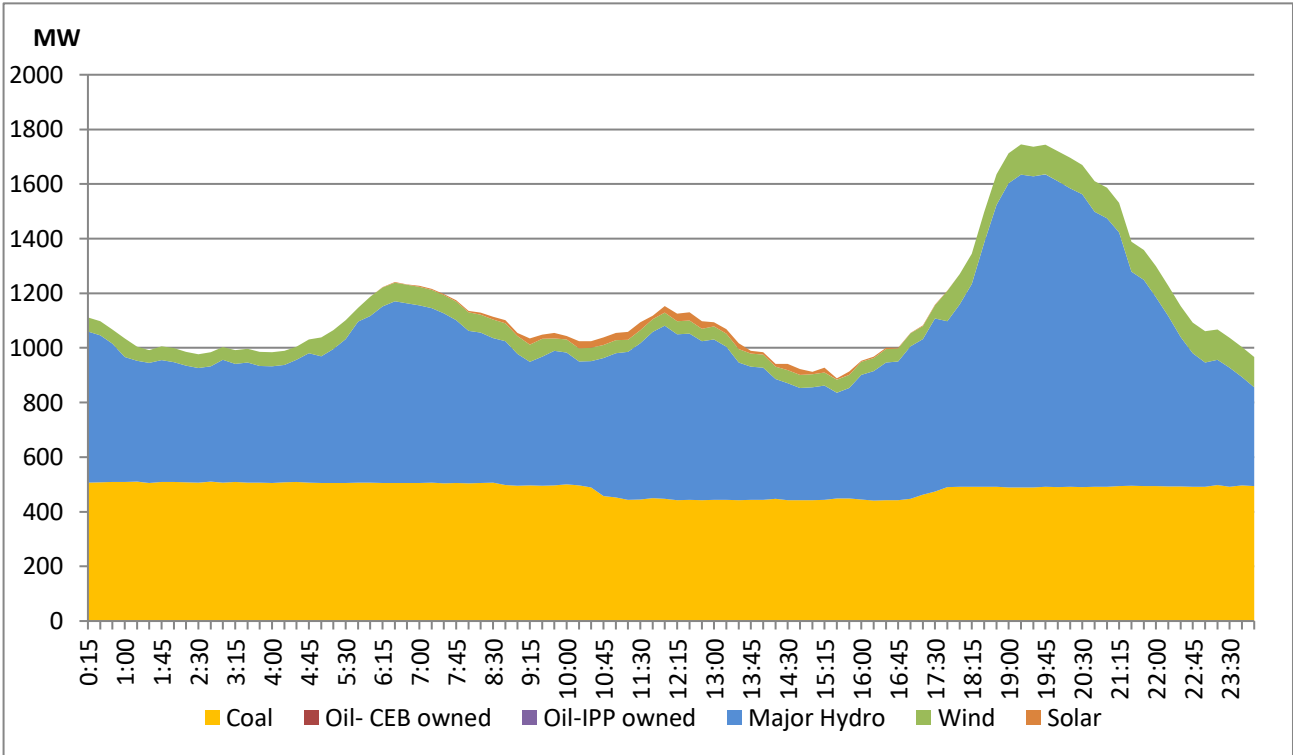
**Notes:**

The night peak is excluding the contribution from Minihydro and biomass power plants  
 Day peak and minimum demand graphs includes the contribution from Moragahakanda power plant  
 All graphs include the contribution from telemetered solar and wind plants

### Daily Load Curve of the Previous day

May 26, 2021

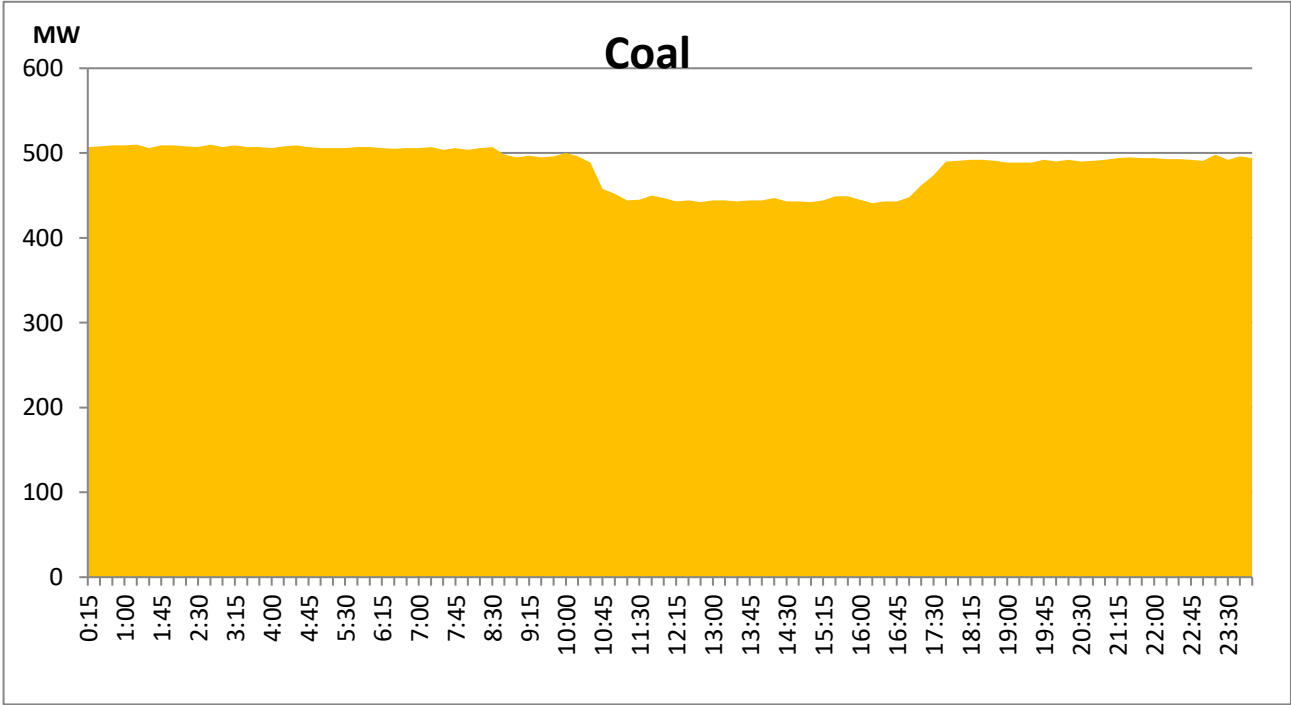
Solar and wind data is based on Telemetered Power Stations only





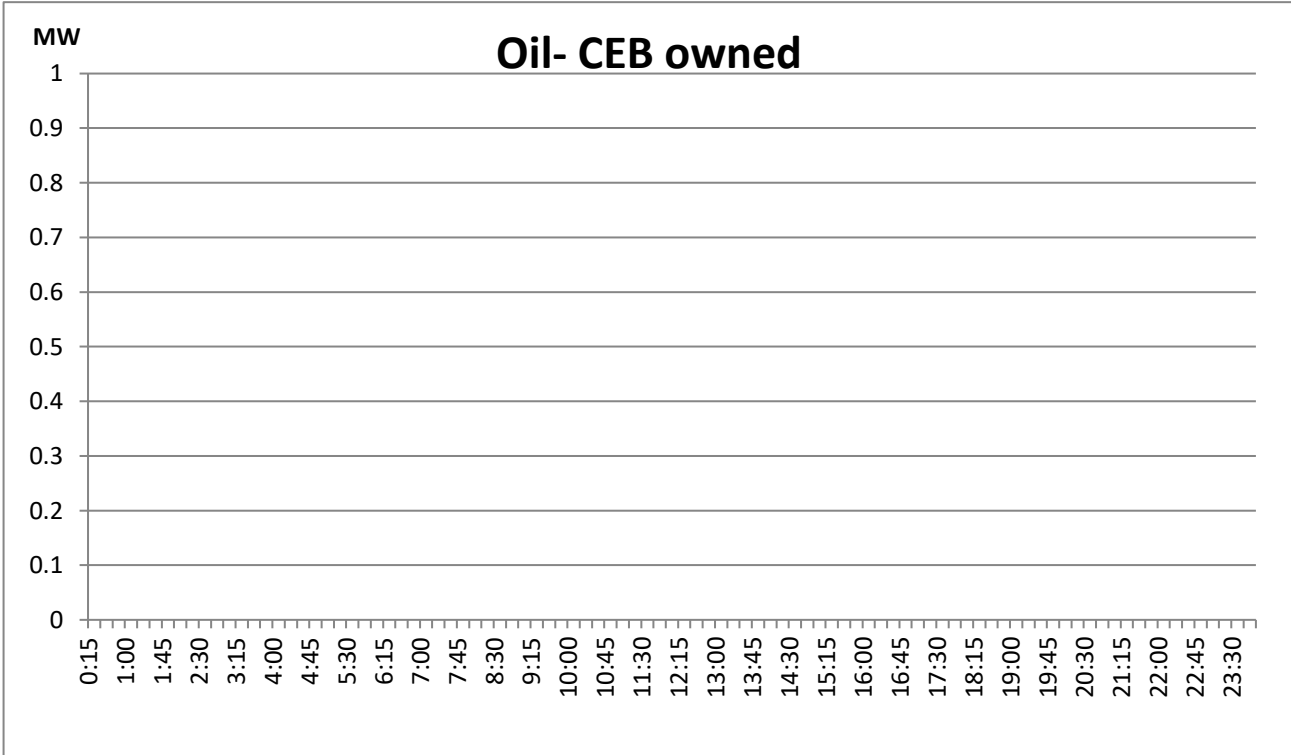
**Coal Generation during the Previous day**

**May 26, 2021**



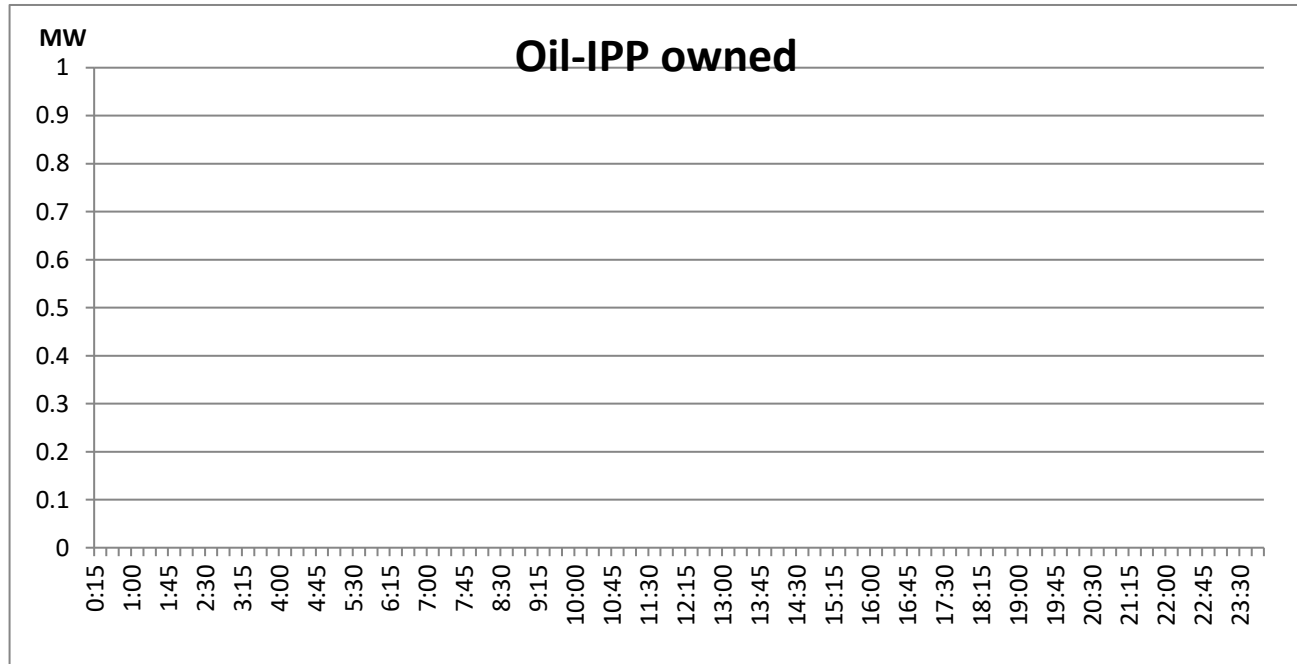
**CEB Oil Plant Generation during the Previous day**

**May 26, 2021**



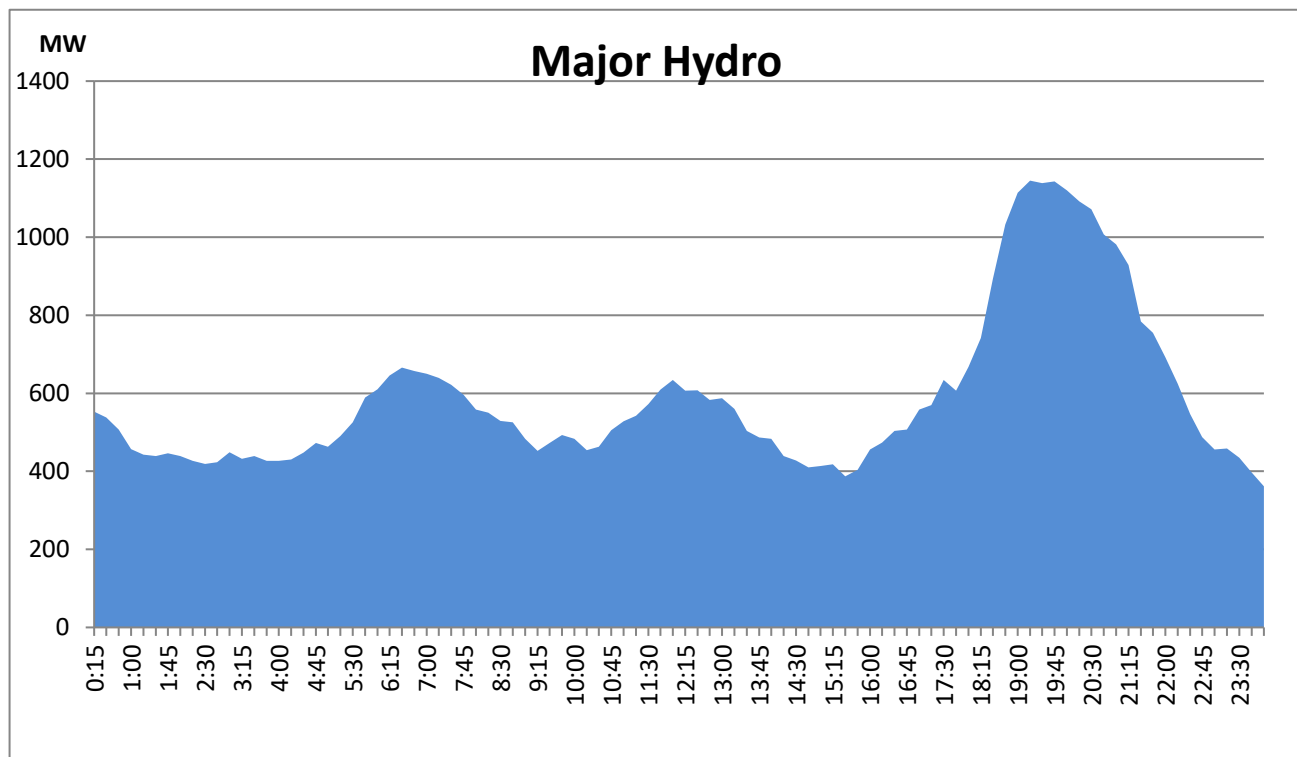
### IPP Oil Plant Generation during the Previous day

May 26, 2021



### Major Hydro Generation during the Previous day

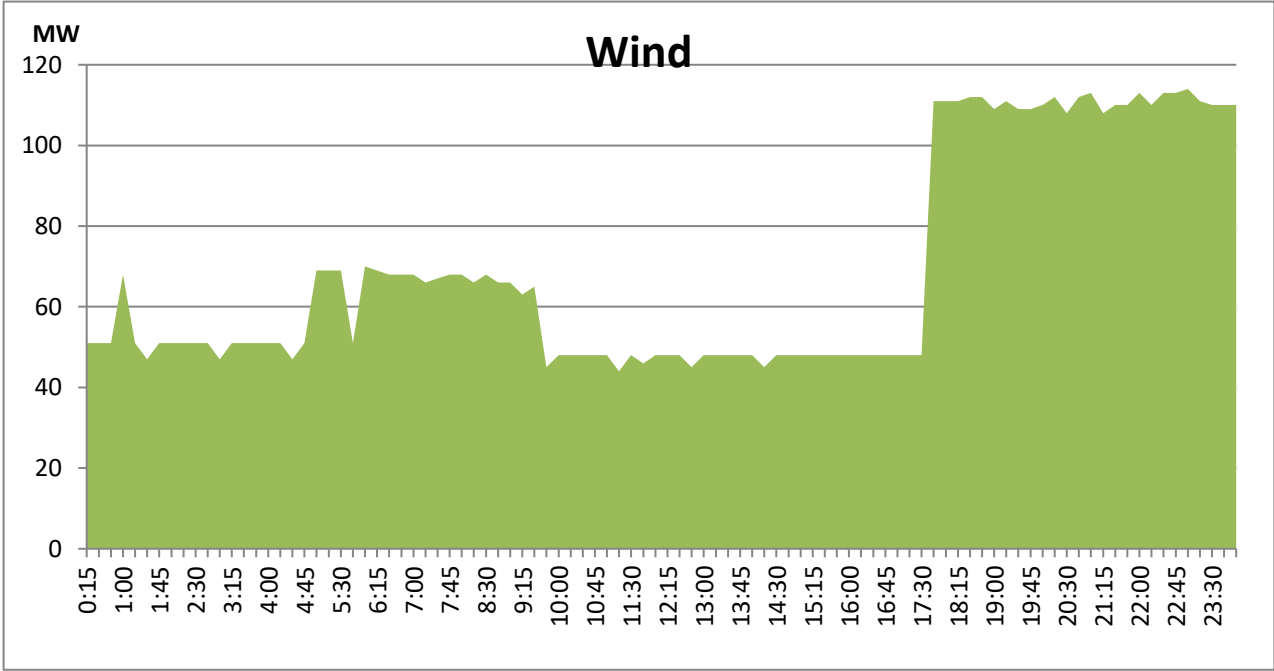
May 26, 2021



# Wind Generation during the Previous day

May 26, 2021

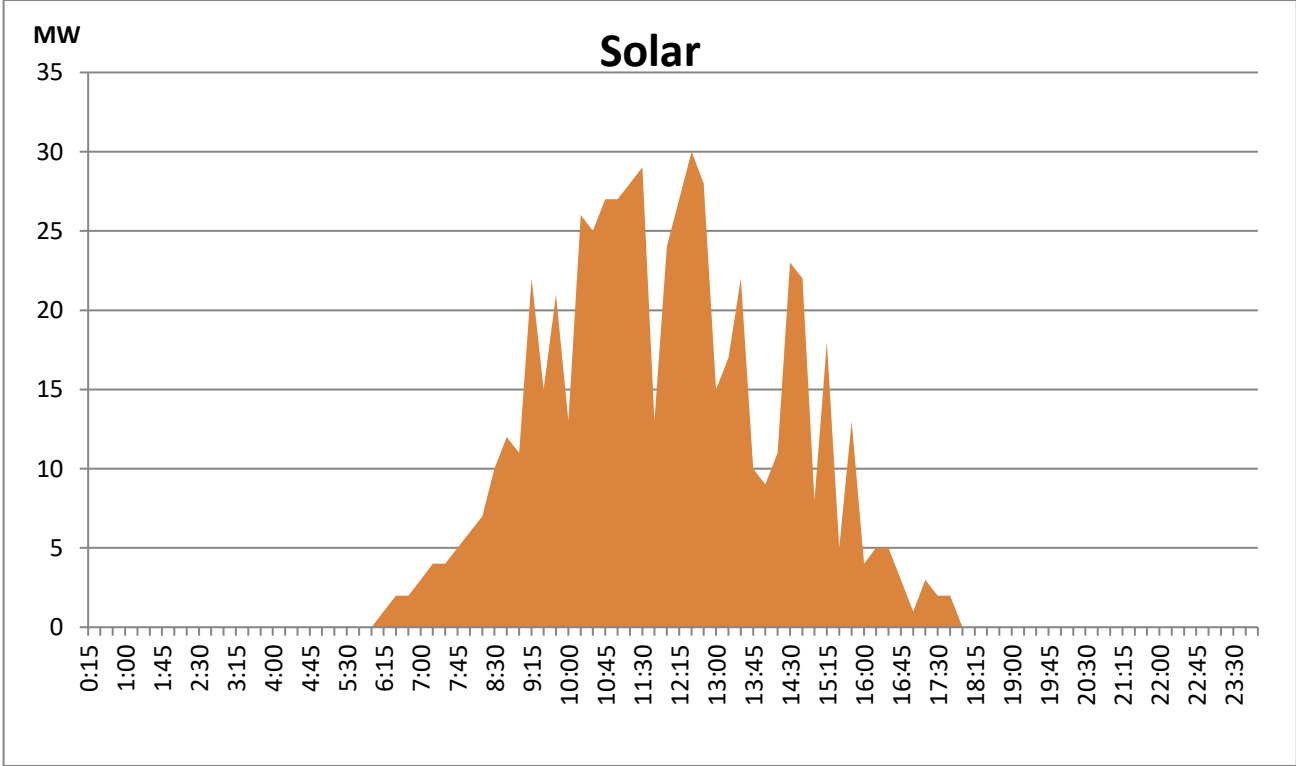
Based on Telemetered Power Stations only



# Solar Generation during the Previous day

May 26, 2021

Based on Telemetered Power Stations only



Summary of Major Plant performance

Plant	Installed Capacity (MW)	Plant Availability (MW)	Night peak Load (MW)	Plant Dispatch (GWh)
Wimalasurendra	50.00	50.00	50.00	122.00
Old Laxapana	53.80	54.00	51.90	1,066.00
Canyon	60.00	60.00	30.00	146.00
New Laxapana	116.00	100.00	99.00	1,603.00
Polpitiya	75.00	90.00	89.70	1,884.00
Kotmale	201.00	201.00	192.00	2,290.00
Victoria	210.00	231.00	210.00	894.00
Randenigala	122.00	104.00	108.00	674.00
Rantambe	49.00	50.00	49.00	276.00
Ukuwela	37.00	36.00	36.00	155.00
Bowatenna	40.00	38.00	39.00	457.00
Upper Kotmale	150.00	150.00	152.00	3,604.00
Nilambe	3.20	3.20	3.20	68.00
Samanalawewa	120.00	120.00	126.00	1,010.00
Kukule	75.00	75.00	78.00	1,874.00
Inginiyagala	11.25	11.25	6.10	143.00
Udawalawe	6.00	4.00	-	51.00
Puttalam Coal I	275.00	270.00	258.00	4,493.00
Puttalam Coal II	275.00	270.00	231.00	3,798.00
Puttalam Coal III	275.00	-	-	2,251.00
KPS Small GTs	65.20	32.00	-	-
KPS GT 7	113.00	115.00	-	-
KCCP	161.00	150.00	-	-
Sapugaskanda A	69.60	50.00	-	-
Sapugaskanda B	69.60	63.00	-	-
Uthura Janani	26.01	24.00	15.60	23.00
Barge CEB	60.00	60.00	-	-
CEB-Thulhiriya	10.00	7.20	6.00	5.00
CEB-Kolonnawa	20.00	12.80	13.00	17.00
CEB-Mathugama	20.00	14.40	16.00	15.00
ACE Matara	20.00	-	-	-
Asia Power	50.80	-	-	-
AES - Kelanitissa	163.00	163.00	-	-
Westcoast	270.00	270.00	-	-
ACE Embilipitiya	100.00	-	-	-
Vpower-Pallekele	24.00	-	-	-
Vpower-Galle	10.00	-	-	-
Vpower-Hamba.	24.00	-	-	-
Vpower-Horana	24.00	-	-	-
Altaaqa-Mahiya.	10.00	-	-	-
Vpower-Valach.	24.00	24.00	24.00	33.00
Solar	58.00		-	290.00
Wind	128.00		94.30	2,061.00
MH and BM	394.00		153.40	Not available
Total without NCRE	3,538.46	2,902.85		

Night peak load of MH and BM only include loading of Minihydro plants of total capacity MW 158

Installed capacity of Solar, wind, Mini-hydro and Biomass plants are as of end of December 2019

Plant availability is the availability recorded at 6 am on

May 28, 2021

## Thermal Plant Fuel types

Power Station	Primary Fuel
CEB Thermal	
Sapugaskanda 1	Heavy Fuel
Sapugaskanda 2	Heavy Fuel
Kelanitissa Small Gas Turbines	Auto Diesel
GT 7 - Kelanitissa	Auto Diesel
Kelanitissa CCY	Naptha & Diesel
Lakvijaya 1	Coal
Lakvijaya 2	Coal
Lakvijaya 3	Coal
Uthuru Janani	Heavy Fuel
Barge CEB	Furnace Oil

Power Station	Primary Fuel
Private Thermal	
Asia Power	Heavy Fuel
Sojitz -	Auto Diesel
West Coast	Low Sulphur Furnace oil
ACE Embilipitiya	Furnace Oil

### Major Incidents during the day -as reported by CEB morning of

May 28, 2021

- 1) Canyon, Norton and Lax Ponds spilling stopped at 07:15 hrs,22:30 hrs and 1:12 hrs(28/05/2021) respectively.
- 2) Kukule and Upper kothmale spilling continues to the present hour.
- 3) Putt T/F 02 and 03 tripped at 7:22 hrs and energized at 8:25 hrs and 7:49 hrs respectively.
- 4) Galle -Balan cct tripped and A/R at 8:33 hrs.
- 5) Kolon-Panni cct 01 tripped at 13:06 hrs and restored at 13:54 hrs .
- 6) N/ Anu-Puut cct 02 tripped and A/R at 16:21 hrs.
- 7) O/Anu 132/33 T/F 02 tripped at 16:37 hrs with feeder 06 .T/F and Feeder 06 energized at 16:48 hrs and 18:28 hrs respectively.