

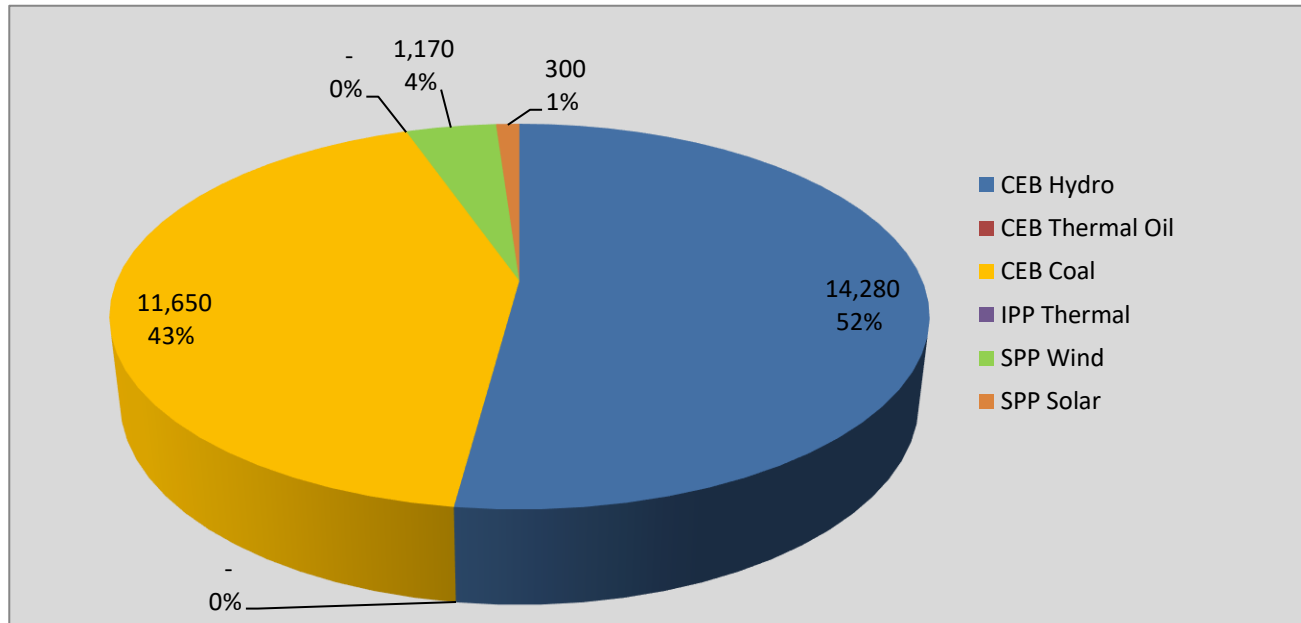
# **Generation and Reservoirs Statistics**

**May 26, 2021**



**PUBLIC UTILITIES COMMISSION OF SRI LANKA**

## Daily Generation Mix in MWh



**Total Generation** **28,720 MWh**

Note: Generation from other SPPs (Mini Hydro and Biomass) is not included

## Cumulative Dispatch

Note: Generation from other SPPs (Mini Hydro, small scale Solar and Biomass) is not included

### For Current Month

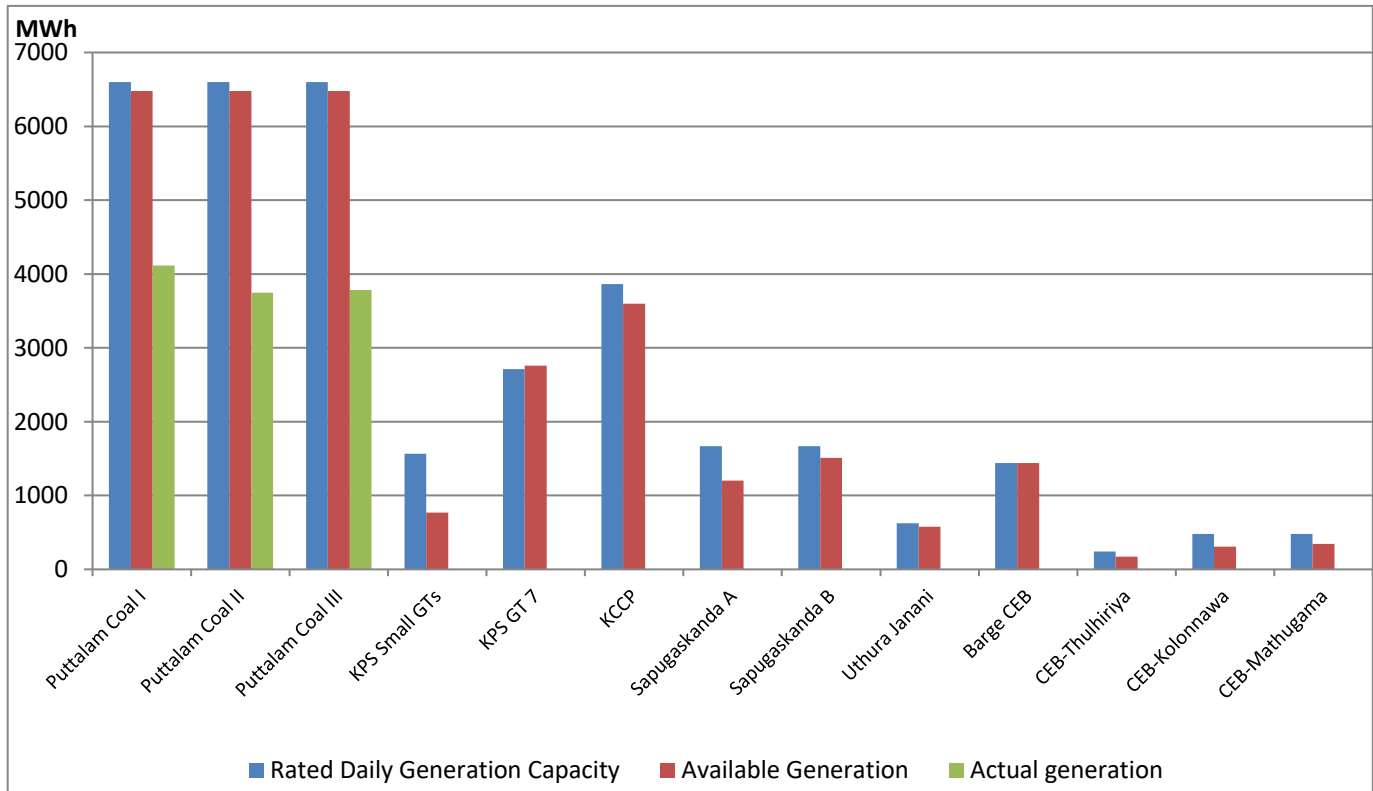
Category	Dispatch (GWh)	Percentage
CEB Hydro	373.7	37.60%
CEB Thermal Oil	80.7	8.12%
CEB Coal	455.2	45.80%
IPP Thermal	32.8	3.30%
SPP Wind	13.6	1.36%
SPP Solar	7.0	0.70%
<b>Total</b>	<b>993.9</b>	

### For Current Year

Category	Dispatch (GWh)	Percentage
CEB Hydro	1,387.5	23.31%
CEB Thermal Oil	689.4	11.58%
CEB Coal	2,719.7	45.69%
IPP Thermal	1,029.7	17.30%
SPP Wind	47.6	0.80%
SPP Solar	37.9	0.64%
<b>Total</b>	<b>5,953.2</b>	

# CEB Thermal Plant Dispatch

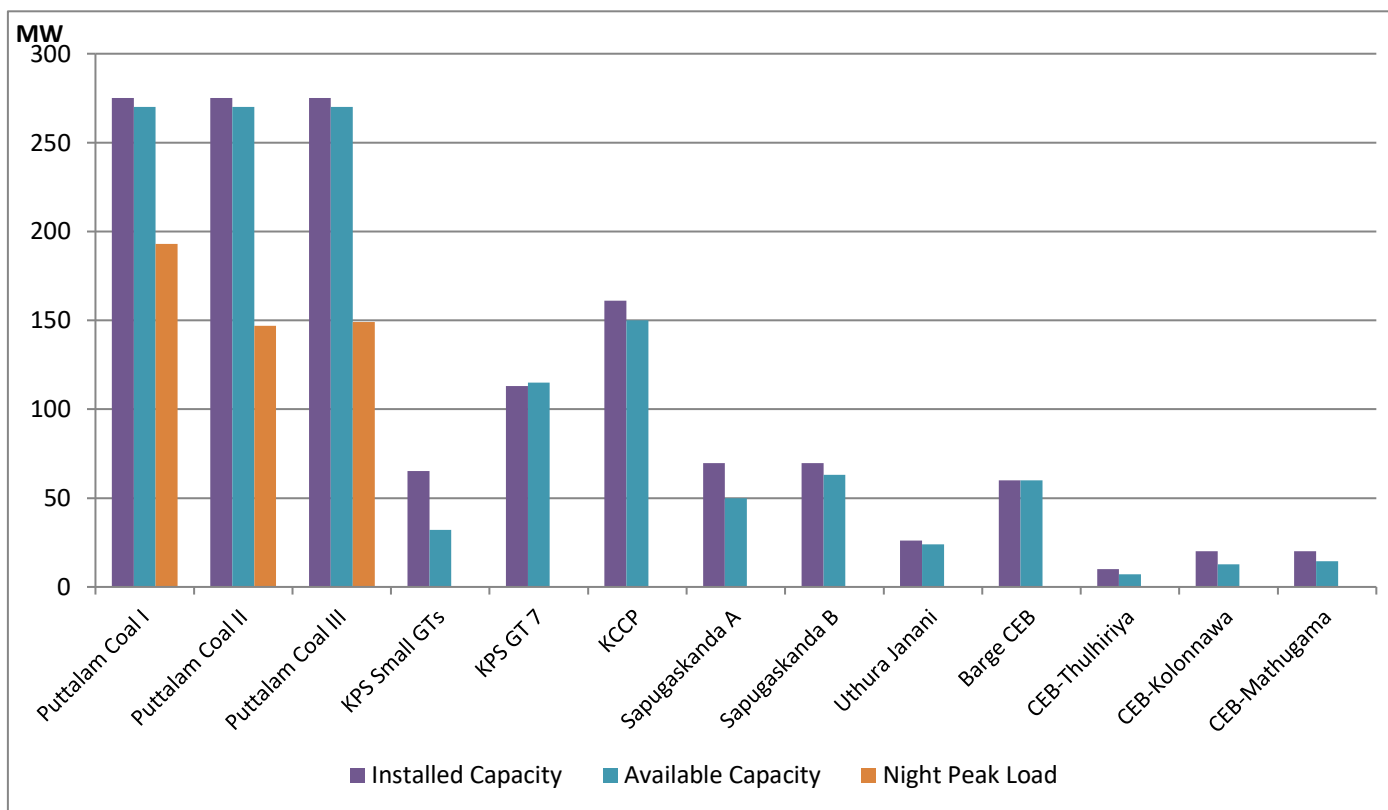
May 26, 2021



Available Generation is estimated based on plant availability at 6.00am on

May 27, 2021

# CEB Thermal Plant Loading at the Night Peak

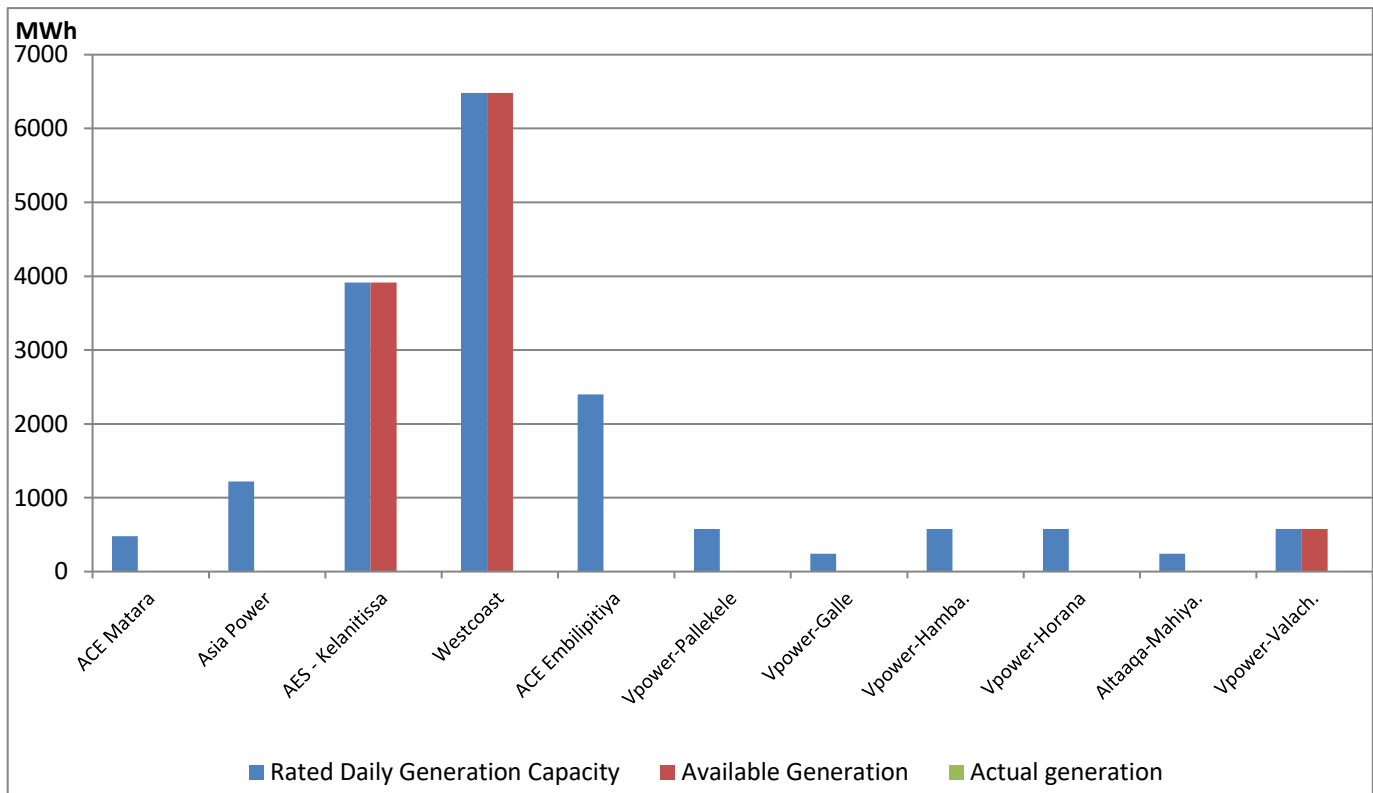


Note- Plant availability is recorded at 6.00 am on May 27, 2021

## IPP Thermal Plant Dispatch

May 26, 2021

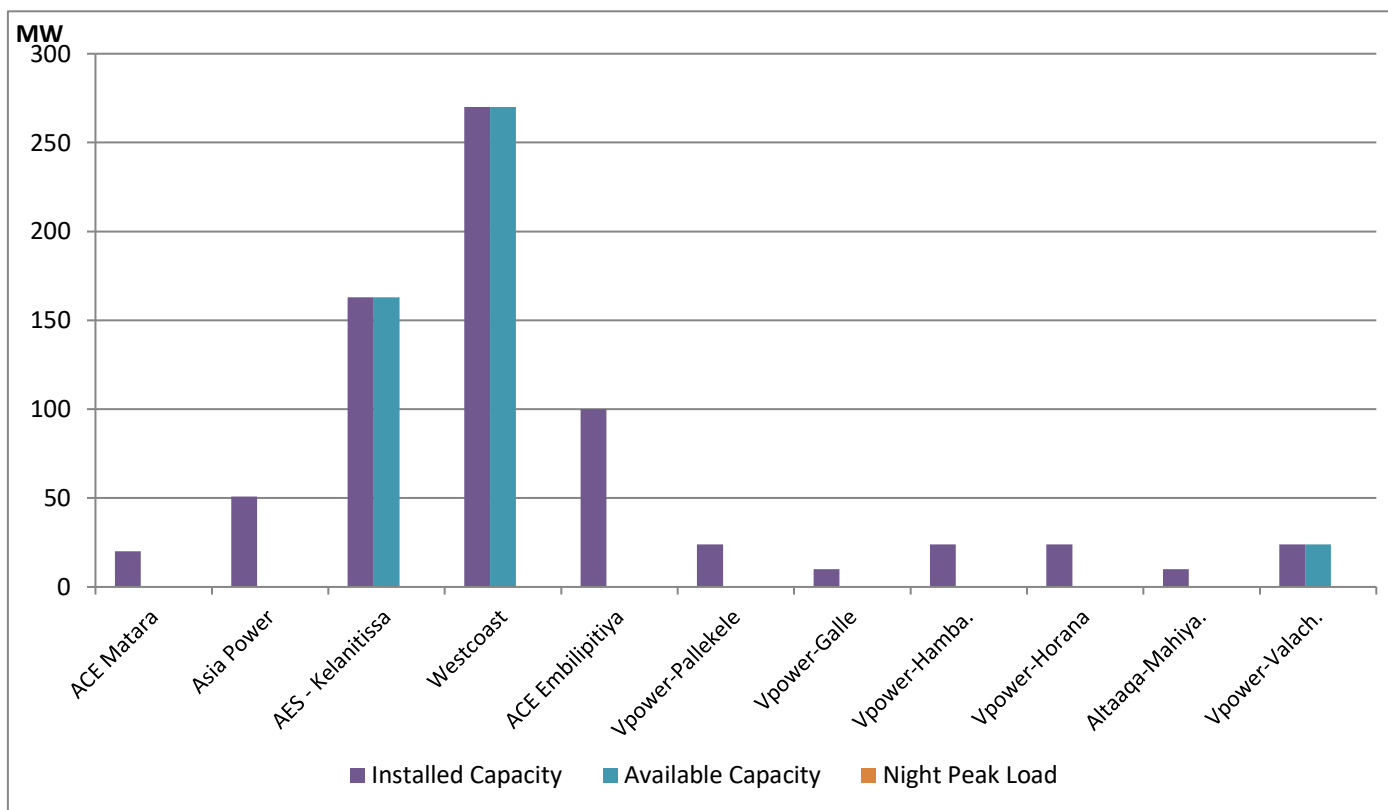
ACE Embilipitiya, ACE Matara, Asia Power, V Power Pallekale, Vpower Galle, V Power Horana, Vpower Hambantota and Altaqa Mahiyangana are not available due to expiration of PPAs



Available Generation is estimated based on plant availability at 6.00am on

May 27, 2021

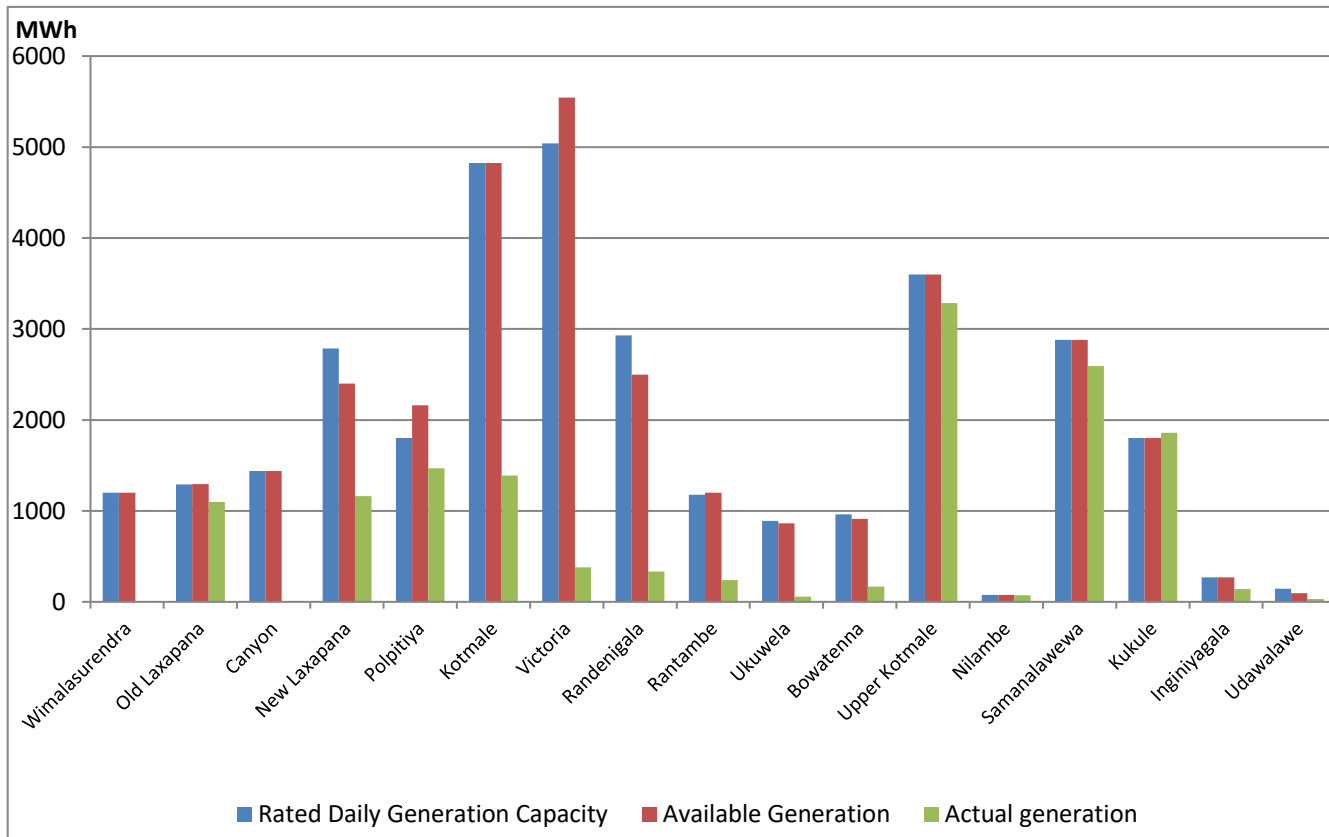
## IPP Thermal Plant Loading at the Night Peak



Note- Plant availability is recorded at 6.00 am on May 27, 2021

## Major Hydro Plant Dispatch

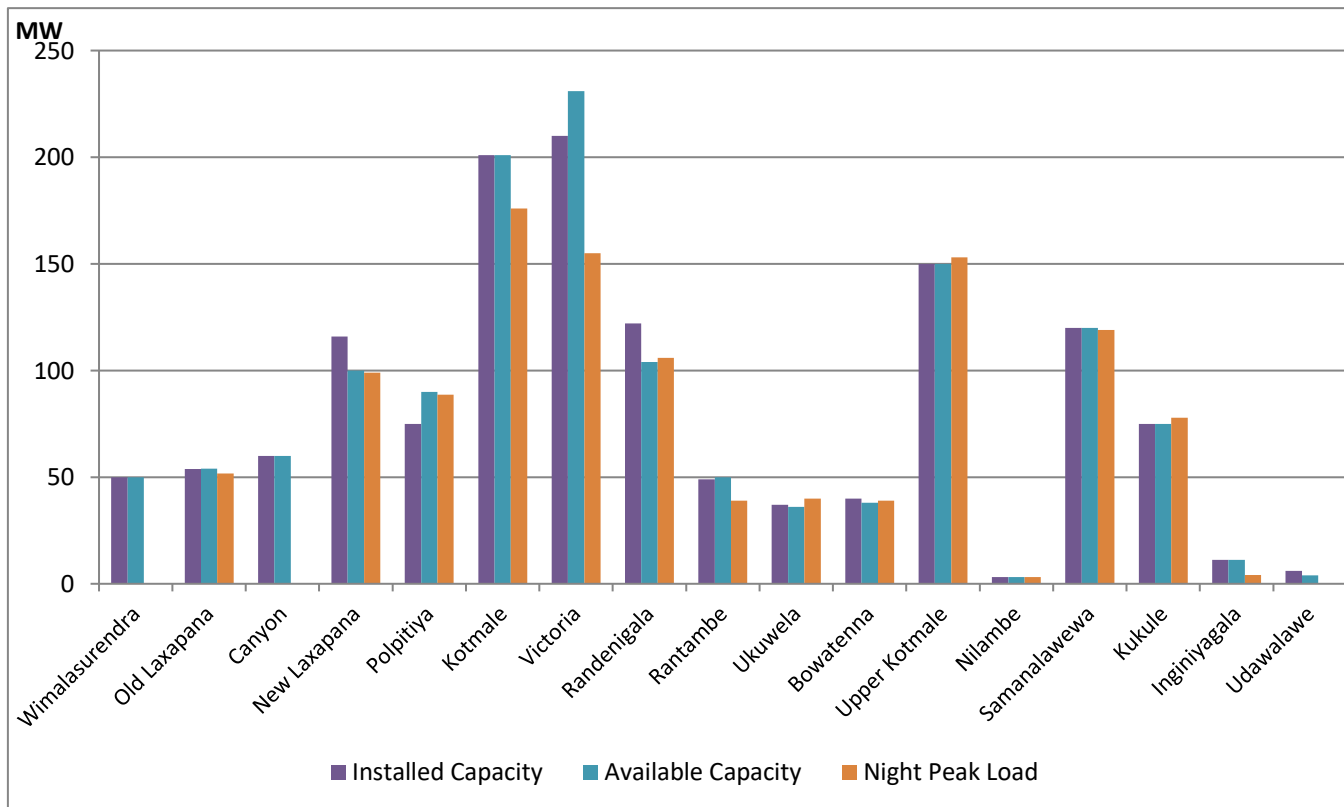
May 26, 2021



Note- Available Generation is estimated based on plant availability at 6.00am on May 27, 2021

## Major Hydro Plant Loading at Night Peak

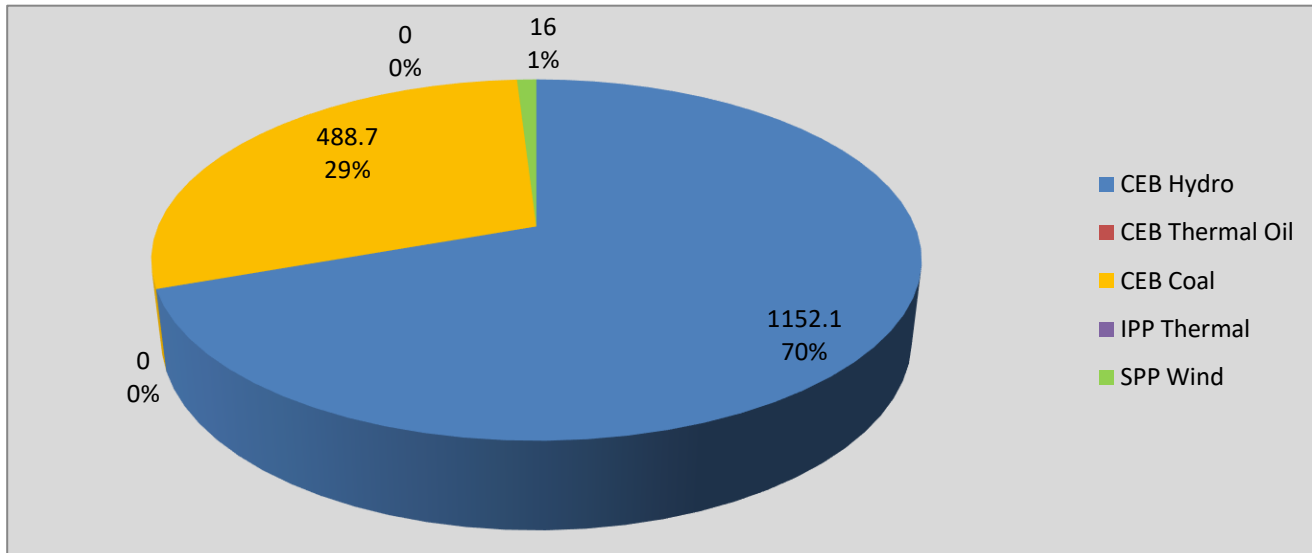
May 26, 2021



Note- Plant availability is recorded at 6.00 am on May 27, 2021

## Contribution to the Night Peak in MW

May 26, 2021



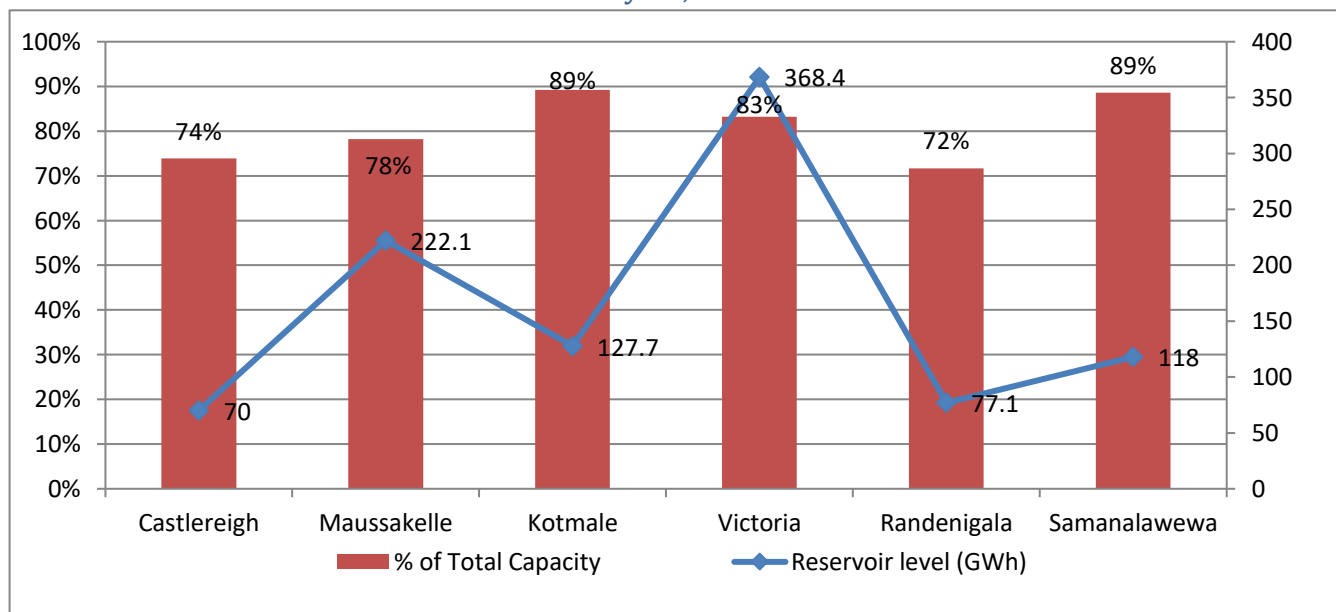
Night Peak*	1,752.1 MW
Day Peak	1,187.8 MW
Minimum Demand	1,114.6 MW

Notes: \*The above chart pattern and night peak figure is presented excluding the contribution of Moragahakanda, other minihydro and biomass power plants

\*\*Day peak and Minimum demand includes the contribution from Moragahakanda, wind and solar plants

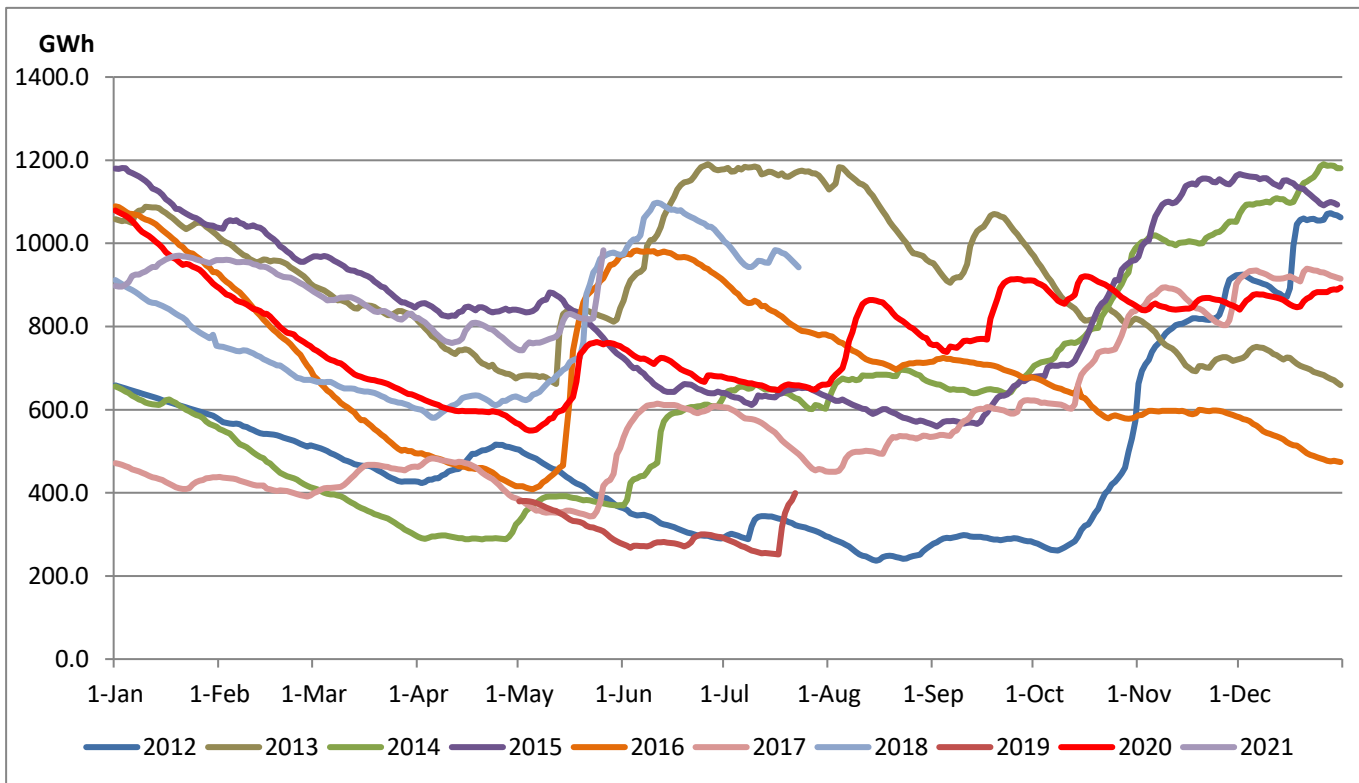
\* in addition to the night peak figure presented above, Moragahakanda plant, other MiniHydro and Biomass Plants of installed capacity 158.00 MW has recorded total 97.90 MW at night peak

## Reservoir Levels - as at 06.00 Hr on May 27, 2021



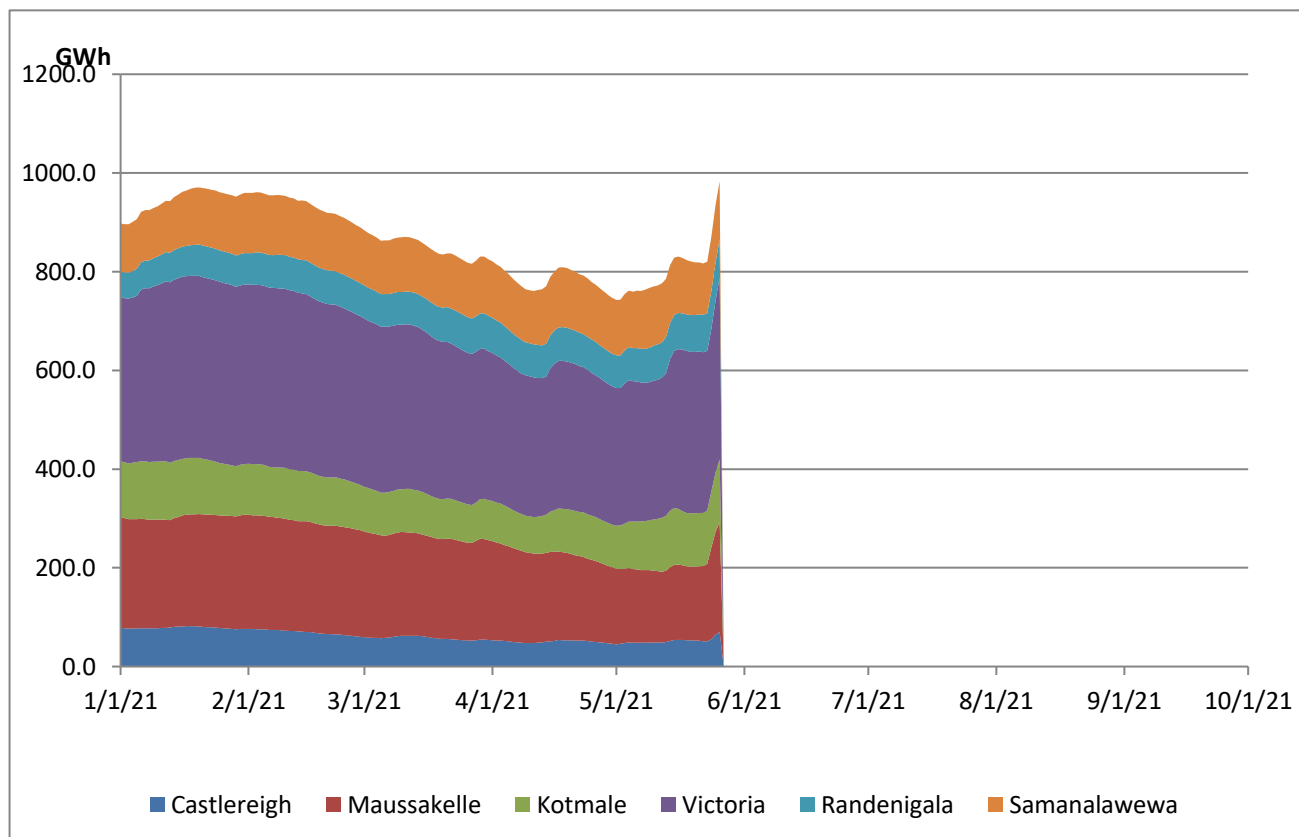
Total Reservoir Level(GWh)	983.3
% of Total capacity	81.6%

## Comparison of Total Reservoir Storage Levels with Past Years

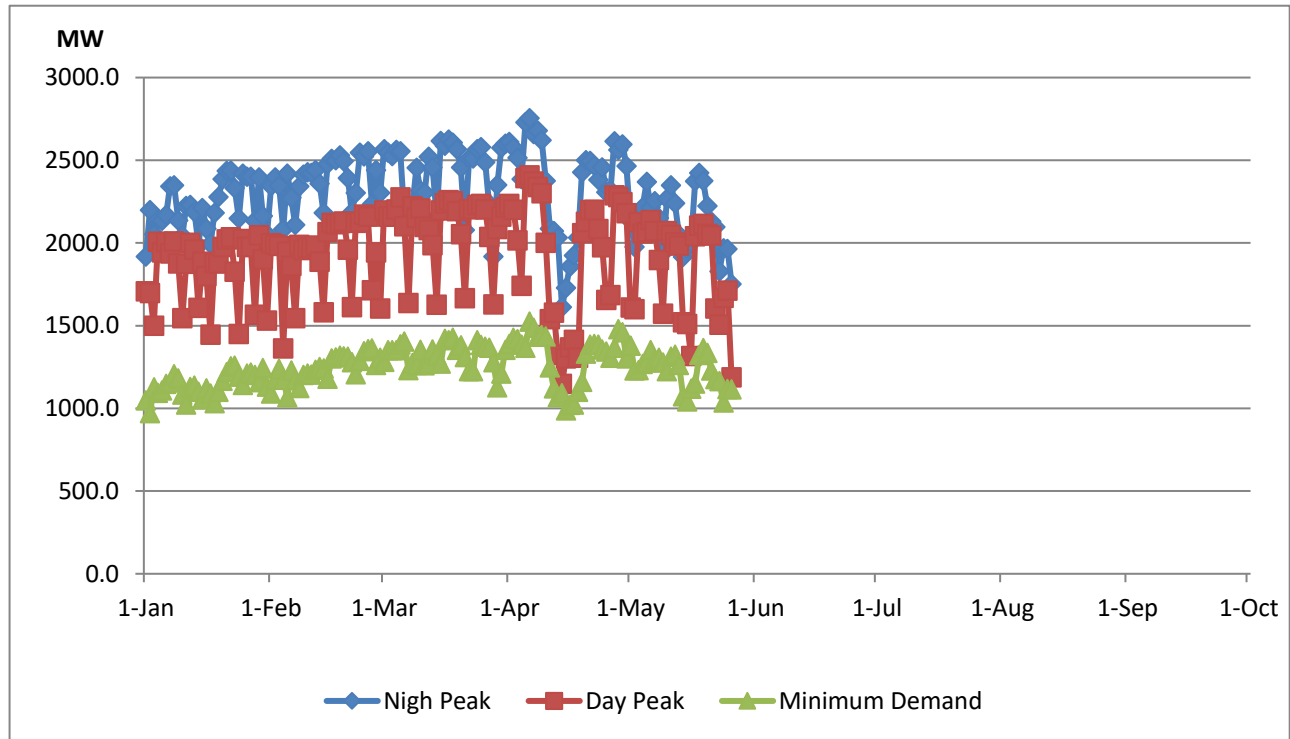


Data for 2018 and 2019 are only available for part of year.

## Variation of Major Hydro Reservoir Levels in the current year (GWh)



## Variation of Demand during the current year



### Notes:

The night peak is excluding the contribution from Minihydro and biomass power plants

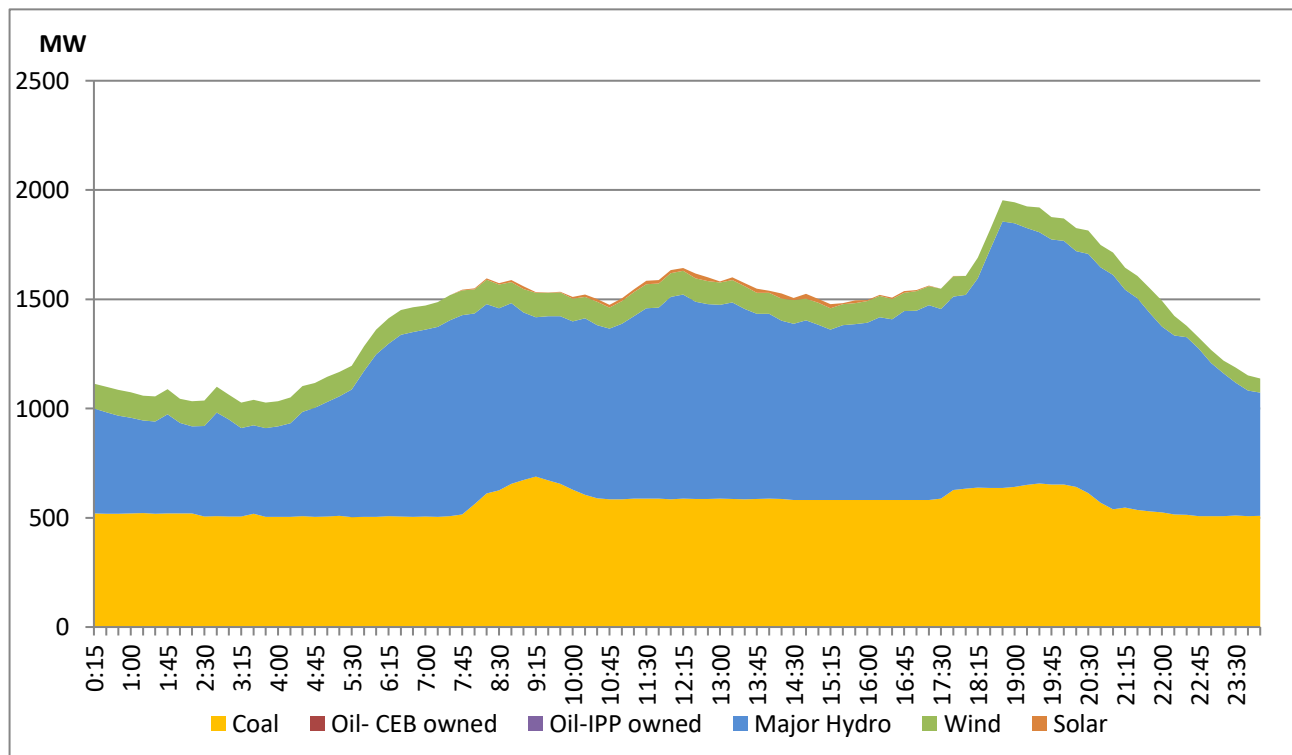
Day peak and minimum demand graphs includes the contribution from Moragahakanda power plant

All graphs include the contribution from telemetered solar and wind plants

## Daily Load Curve of the Previous day

May 25, 2021

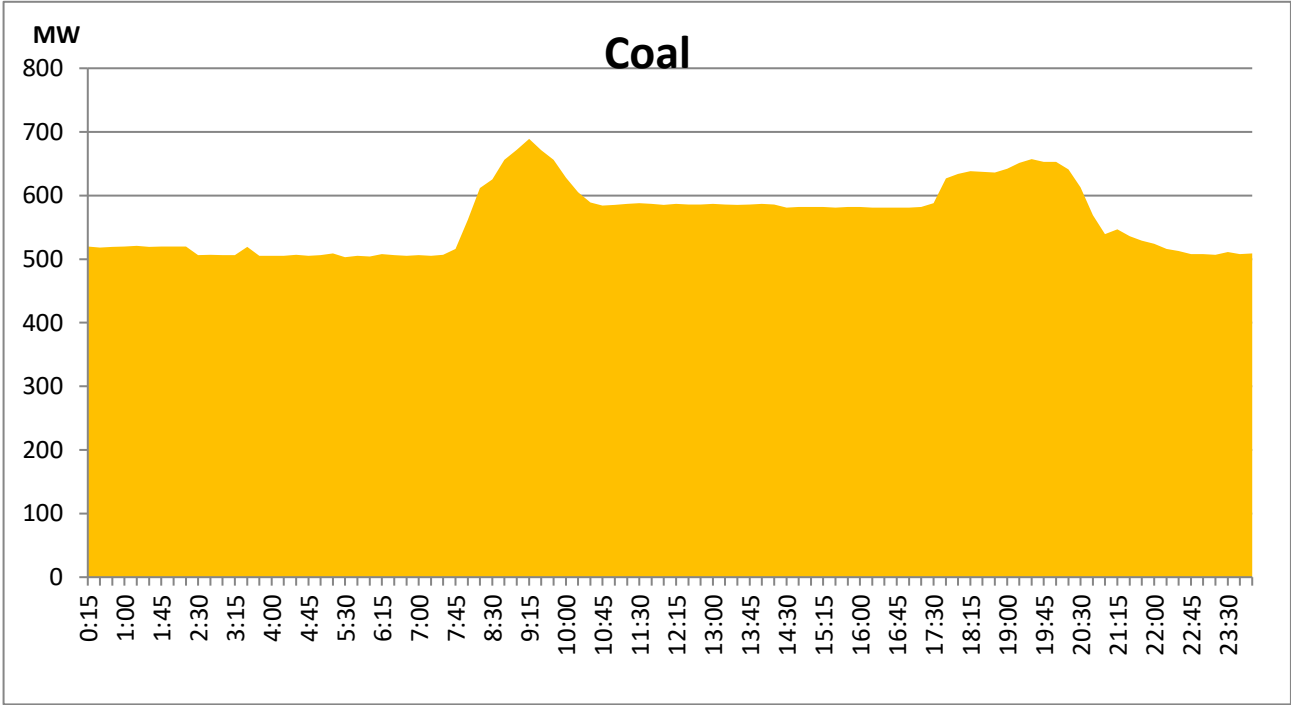
Solar and wind data is based on Telemetered Power Stations only





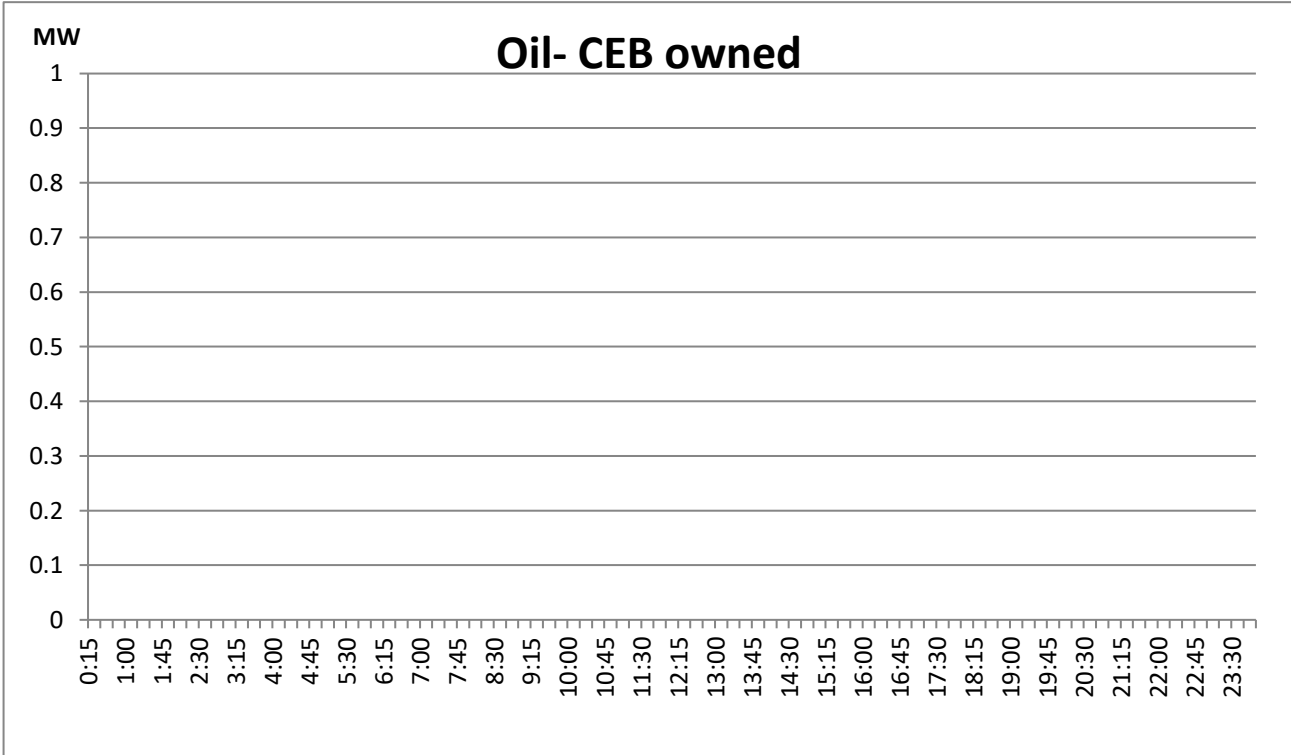
**Coal Generation during the Previous day**

**May 25, 2021**



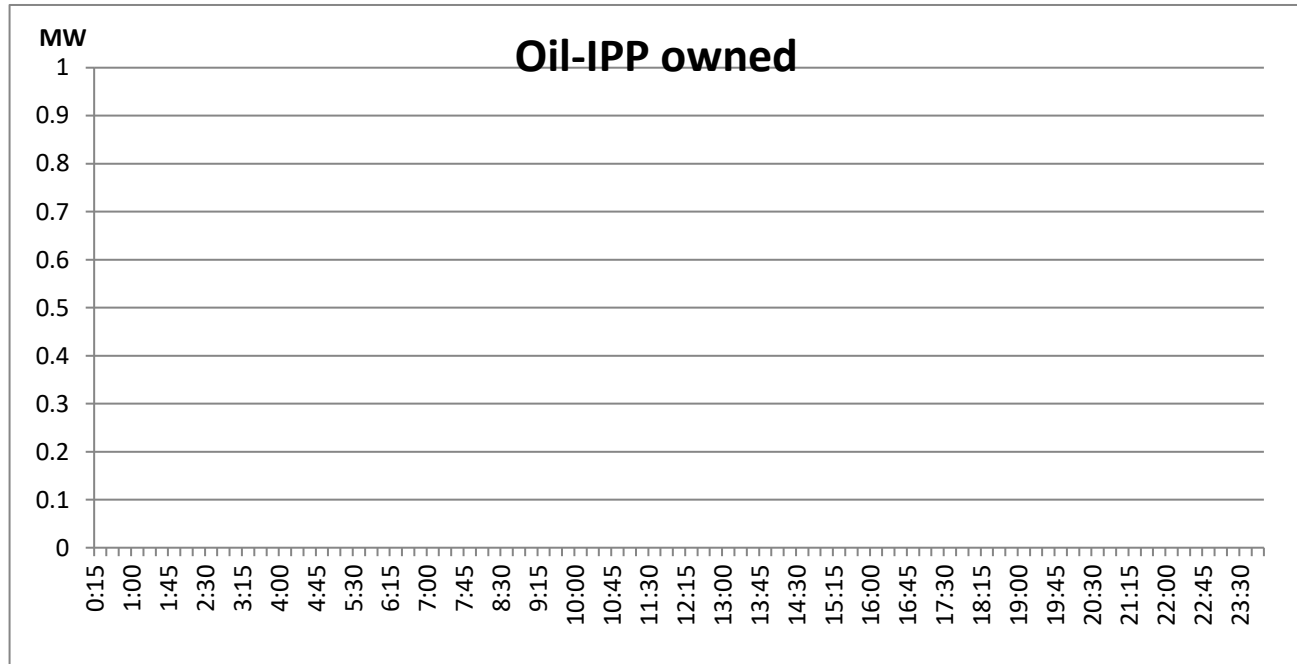
**CEB Oil Plant Generation during the Previous day**

**May 25, 2021**



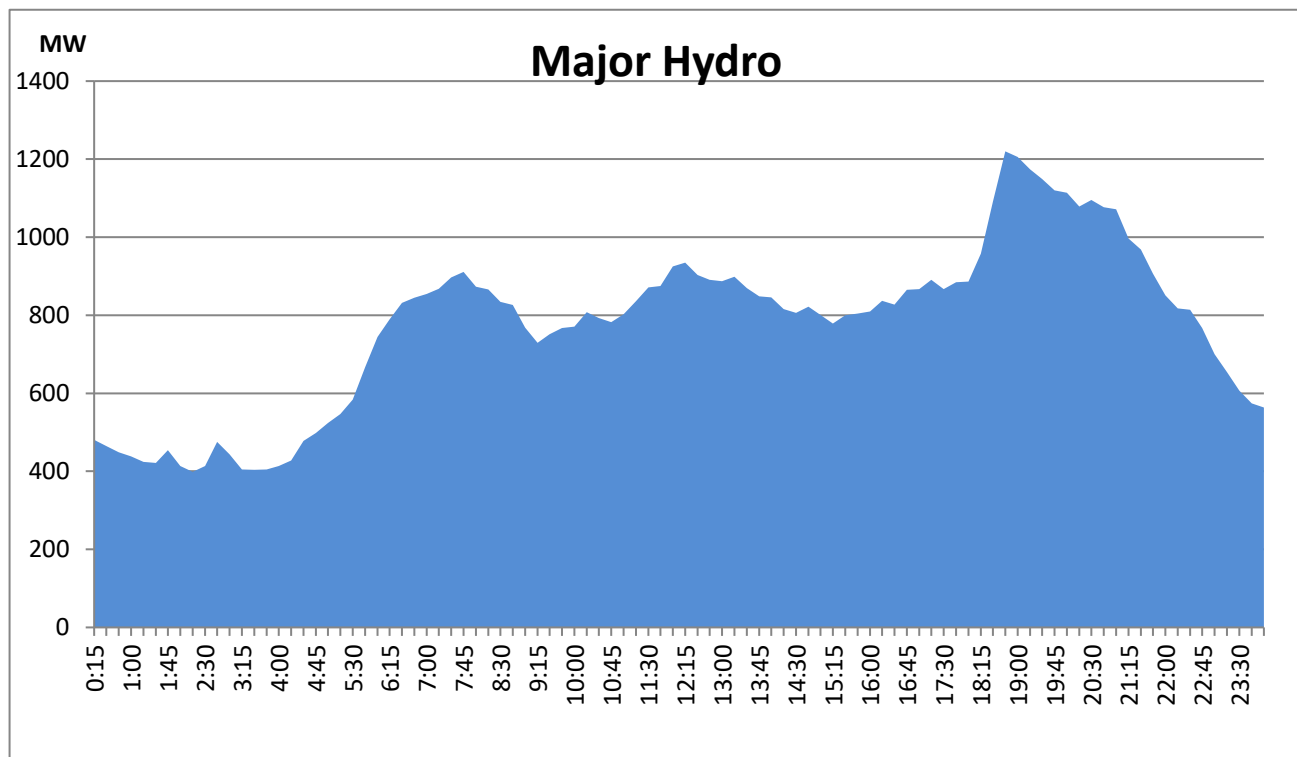
### IPP Oil Plant Generation during the Previous day

May 25, 2021



### Major Hydro Generation during the Previous day

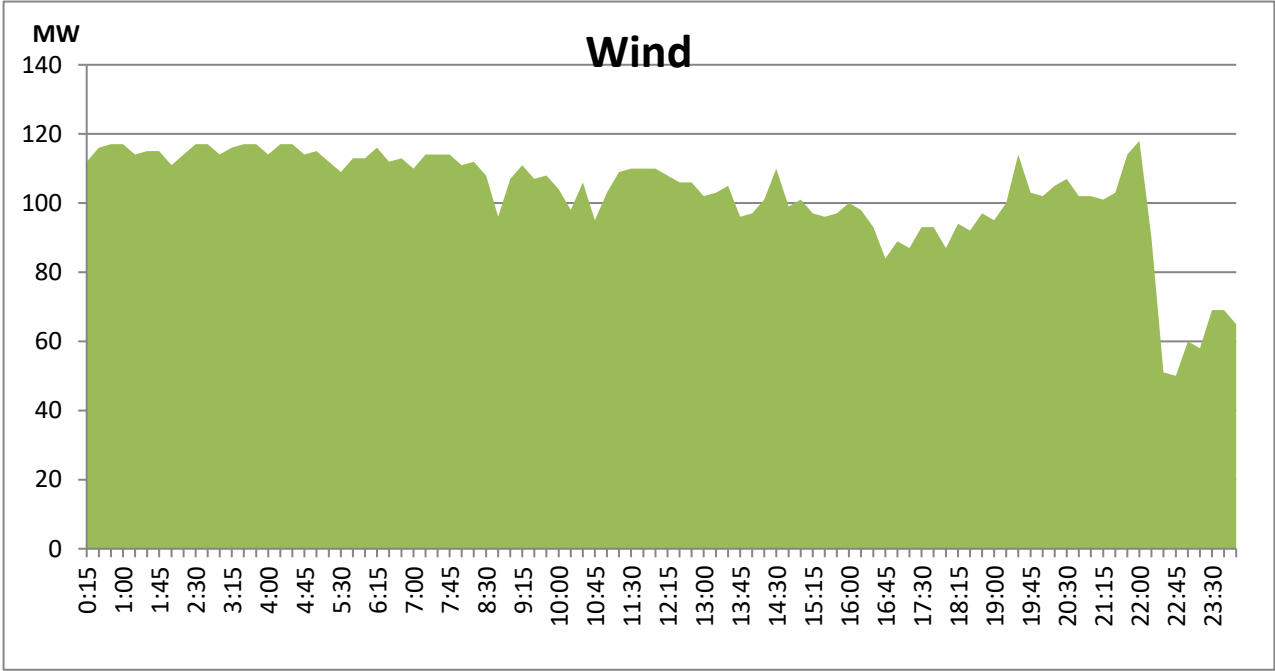
May 25, 2021



# Wind Generation during the Previous day

May 25, 2021

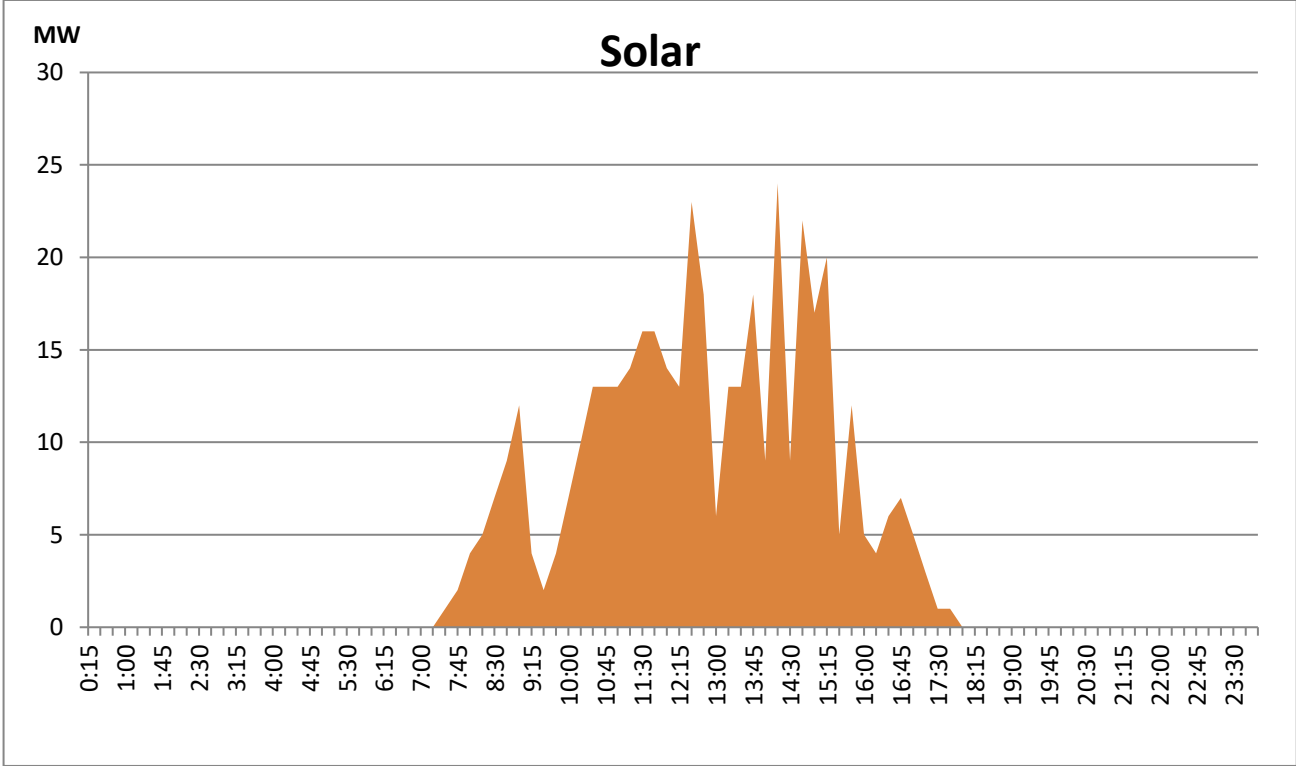
Based on Telemetered Power Stations only



# Solar Generation during the Previous day

May 25, 2021

Based on Telemetered Power Stations only



Summary of Major Plant performance

Plant	Installed Capacity (MW)	Plant Availability (MW)	Night peak Load (MW)	Plant Dispatch (GWh)
Wimalasurendra	50.00	50.00	-	-
Old Laxapana	53.80	54.00	51.70	1,096.00
Canyon	60.00	60.00	-	-
New Laxapana	116.00	100.00	99.00	1,161.00
Polpitiya	75.00	90.00	88.60	1,468.00
Kotmale	201.00	201.00	176.00	1,390.00
Victoria	210.00	231.00	155.00	380.00
Randenigala	122.00	104.00	106.00	333.00
Rantambe	49.00	50.00	39.00	237.00
Ukuwela	37.00	36.00	40.00	59.00
Bowatenna	40.00	38.00	39.00	167.00
Upper Kotmale	150.00	150.00	153.00	3,284.00
Nilambe	3.20	3.20	3.20	71.00
Samanalawewa	120.00	120.00	119.00	2,593.00
Kukule	75.00	75.00	77.80	1,859.00
Inginiyagala	11.25	11.25	4.10	142.00
Udawalawe	6.00	4.00	-	32.00
Puttalam Coal I	275.00	270.00	193.00	4,116.00
Puttalam Coal II	275.00	270.00	147.00	3,747.00
Puttalam Coal III	275.00	270.00	149.00	3,784.00
KPS Small GTs	65.20	32.00	-	-
KPS GT 7	113.00	115.00	-	-
KCCP	161.00	150.00	-	-
Sapugaskanda A	69.60	50.00	-	-
Sapugaskanda B	69.60	63.00	-	-
Uthura Janani	26.01	24.00	-	-
Barge CEB	60.00	60.00	-	-
CEB-Thulhiriya	10.00	7.20	-	-
CEB-Kolonnawa	20.00	12.80	-	-
CEB-Mathugama	20.00	14.40	-	-
ACE Matara	20.00	-	-	-
Asia Power	50.80	-	-	-
AES - Kelanitissa	163.00	163.00	-	-
Westcoast	270.00	270.00	-	-
ACE Embilipitiya	100.00	-	-	-
Vpower-Pallekele	24.00	-	-	-
Vpower-Galle	10.00	-	-	-
Vpower-Hamba.	24.00	-	-	-
Vpower-Horana	24.00	-	-	-
Altaaqa-Mahiya.	10.00	-	-	-
Vpower-Valach.	24.00	24.00	-	-
Solar	58.00		-	226.00
Wind	128.00		111.30	2,505.00
MH and BM	394.00		97.90	Not available
<b>Total without NCRE</b>	<b>3,538.46</b>	<b>3,172.85</b>		

Night peak load of MH and BM only include loading of Minihydro plants of total capacity MW 158

Installed capacity of Solar, wind, Mini-hydro and Biomass plants are as of end of December 2019

Plant availability is the availability recorded at 6 am on

May 27, 2021

**Thermal Plant Fuel types**

Power Station	Primary Fuel
CEB Thermal	
Sapugaskanda 1	Heavy Fuel
Sapugaskanda 2	Heavy Fuel
Kelanitissa Small Gas Turbines	Auto Diesel
GT 7 - Kelanitissa	Auto Diesel
Kelanitissa CCY	Naptha & Diesel
Lakvijaya 1	Coal
Lakvijaya 2	Coal
Lakvijaya 3	Coal
Uthuru Janani	Heavy Fuel
Barge CEB	Furnace Oil

Power Station	Primary Fuel
Private Thermal	
Asia Power	Heavy Fuel
Sojitz -	Auto Diesel
West Coast	Low Sulphur Furnace oil
ACE Embilipitiya	Furnace Oil

**Major Incidents during the day -as reported by CEB morning of May 27, 2021**

- 1) Canyon pond spilling started at 01:06 hrs and Laxapana pond spilling started at 02:30 hrs on 27/06/2021.
- 2) Norton Pond, Kukule and Upper kothmale spilling continues to the present hour.
- 3) Deniyaya-Balangoda cct tripped at 12:51 hrs from both ends due to operation of distance protection and cct normalized at 13:14 hrs.
- 4) Matara-Galle cct-01 tripped & auto-reclosed at 16:35 hrs from Matara end and tripped from Galle end due to operation of differential protection. Cct normalized at 16:42 hrs.
- 5) Biyagama 132/33kV T/F-03 & T/F-04 normalized at 17:44 hrs.
- 6) Galle-Balangoda cct tripped from both ends at 03:17 hrs (on 27/06/2021) due to operation of distance protection. Cct normalized at 03:37 hrs. Same cct again tripped and A/R from both ends at 04:02 hrs.
- 7) Puttalam 132/33kV T/F-02 tripped from both sides at 04:18 hrs. Sametime T/F-01 & T/F-03 tripped from 33kV side only and made Puttalam GSS feeders to be dead. Some of the affected feeders were normalized via T/F-01, T/F-03 at 05:36 hrs. Puttalam T/F-02 and remaining feeders normalized at 06:05 hrs