

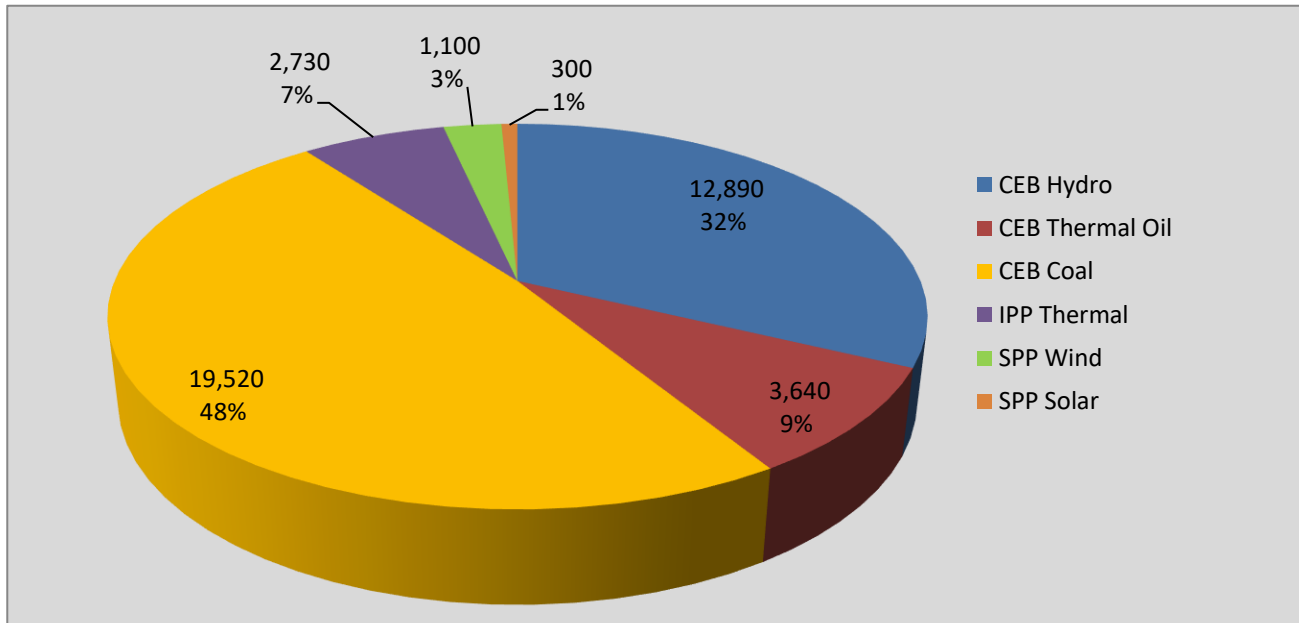
# **Generation and Reservoirs Statistics**

**May 20, 2021**



**PUBLIC UTILITIES COMMISSION OF SRI LANKA**

## Daily Generation Mix in MWh



**Total Generation** **42,530 MWh**

Note: Generation from other SPPs (Mini Hydro and Biomass) is not included

## Cumulative Dispatch

Note: Generation from other SPPs (Mini Hydro, small scale Solar and Biomass) is not included

### For Current Month

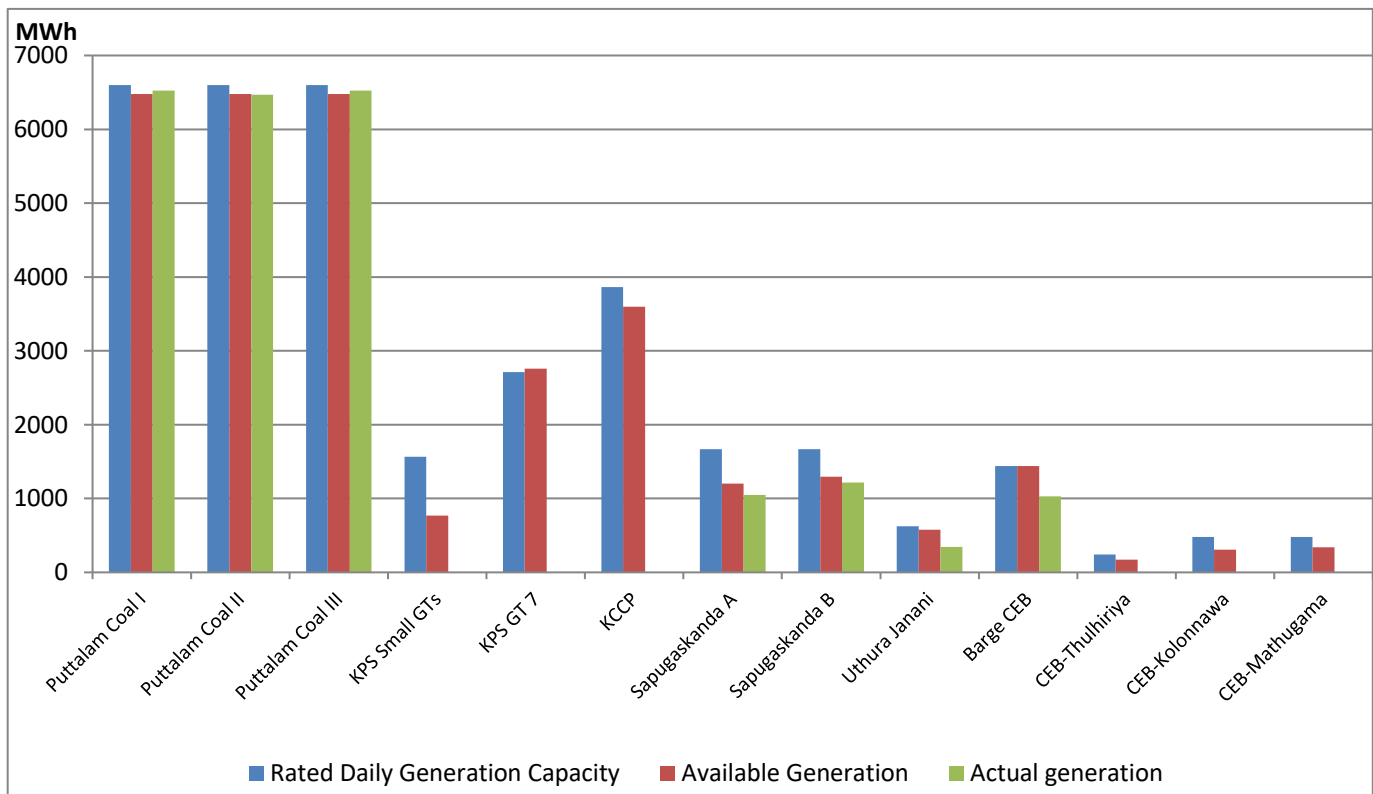
Category	Dispatch (GWh)	
CEB Hydro	282.7	35.98%
CEB Thermal Oil	75.7	9.64%
CEB Coal	362.9	46.19%
IPP Thermal	32.8	4.17%
SPP Wind	7.7	0.98%
SPP Solar	5.0	0.63%
<b>Total</b>	<b>785.6</b>	

### For Current Year

Category	Dispatch (GWh)	
CEB Hydro	1,296.4	22.57%
CEB Thermal Oil	684.4	11.91%
CEB Coal	2,627.4	45.73%
IPP Thermal	1,029.7	17.92%
SPP Wind	41.8	0.73%
SPP Solar	35.9	0.62%
<b>Total</b>	<b>5,744.8</b>	

# CEB Thermal Plant Dispatch

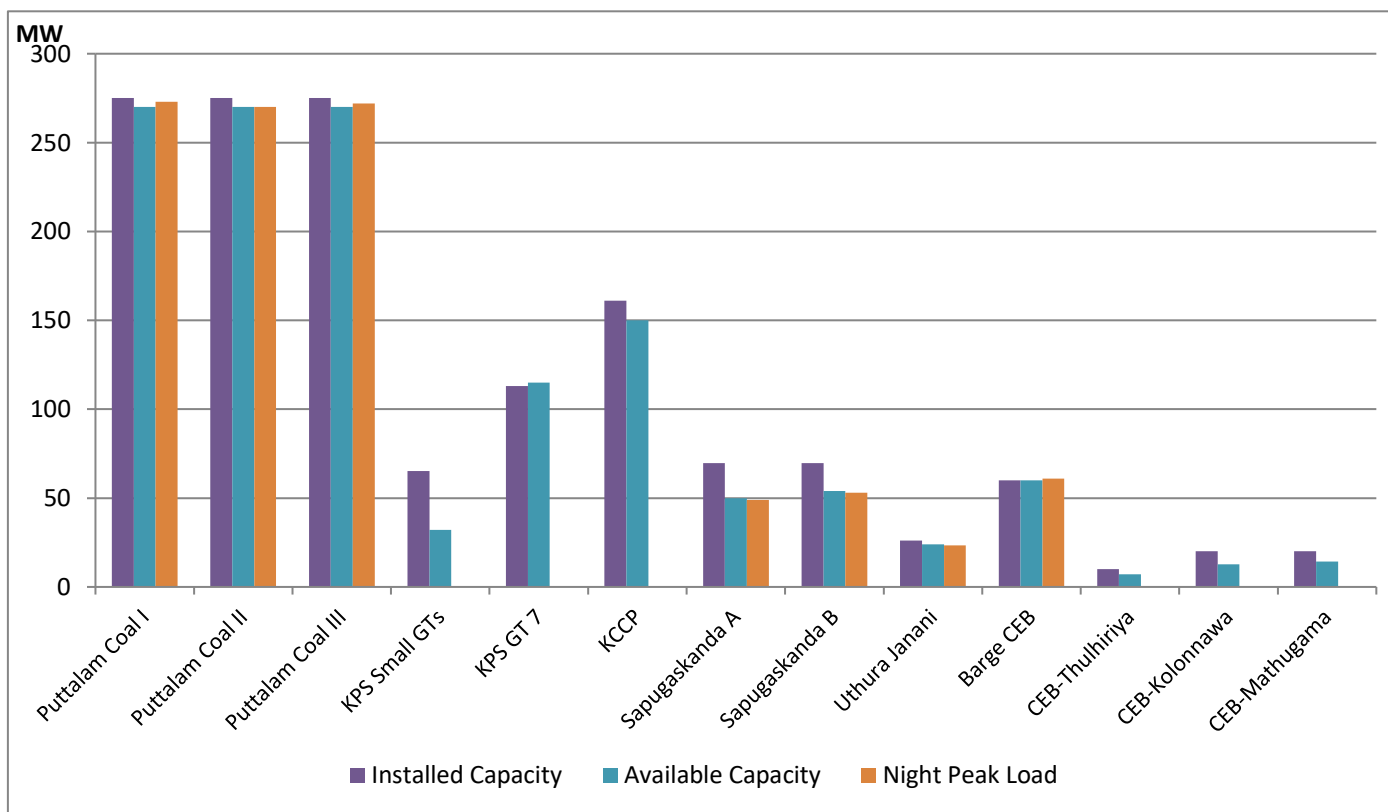
May 20, 2021



Available Generation is estimated based on plant availability at 6.00am on

May 21, 2021

# CEB Thermal Plant Loading at the Night Peak

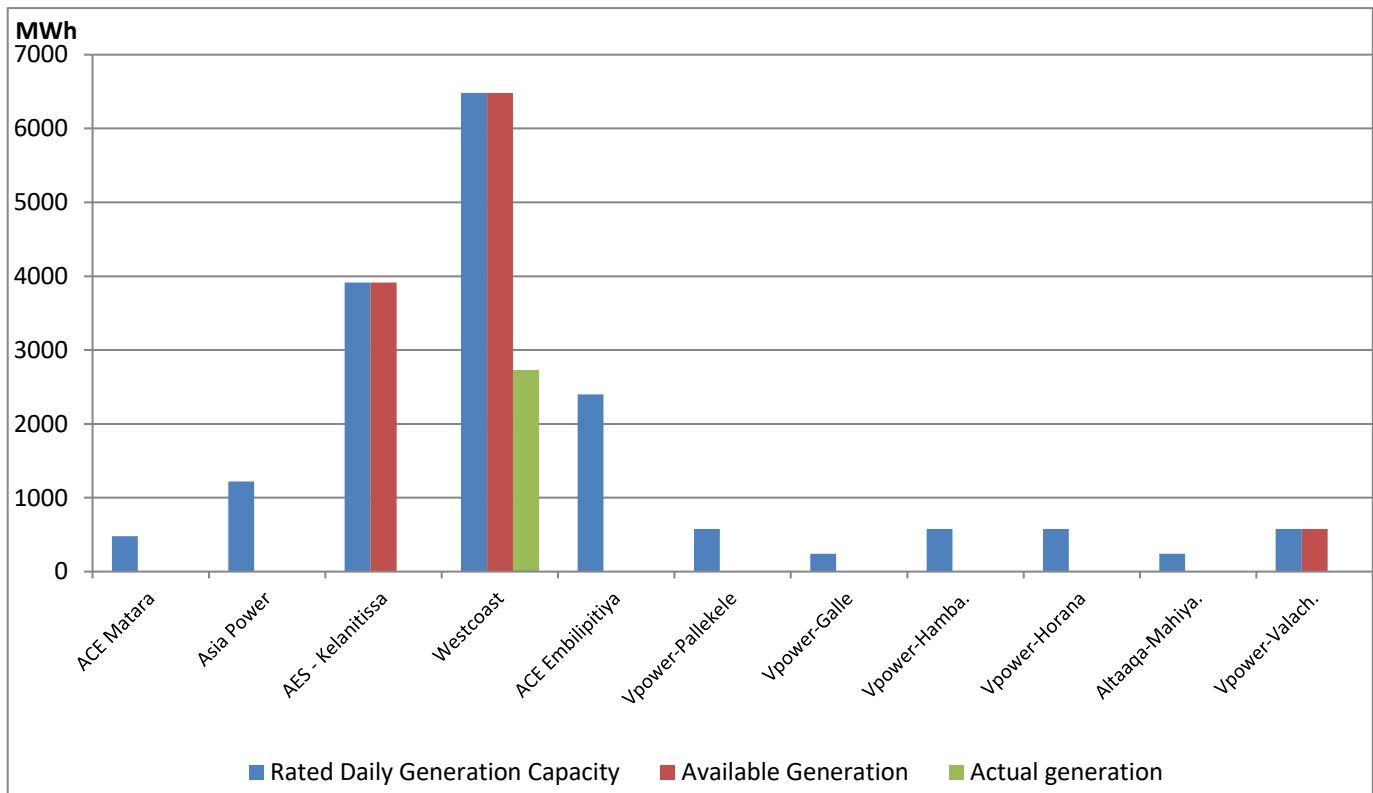


Note- Plant availability is recorded at 6.00 am on May 21, 2021

## IPP Thermal Plant Dispatch

May 20, 2021

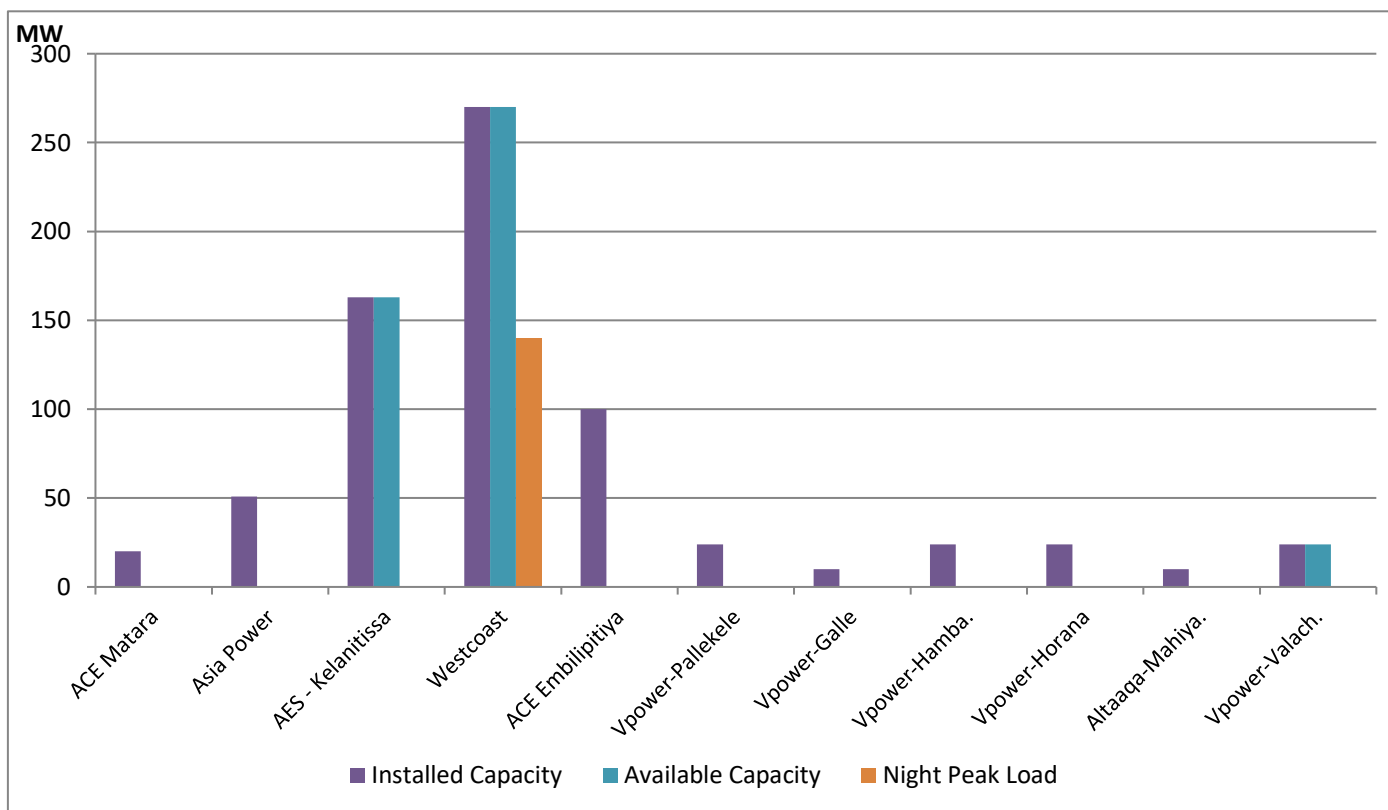
ACE Embilipitiya, ACE Matara, Asia Power, V Power Pallekale, Vpower Galle, V Power Horana, Vpower Hambantota and Altaqa Mahiyangana are not available due to expiration of PPAs



Available Generation is estimated based on plant availability at 6.00am on

May 21, 2021

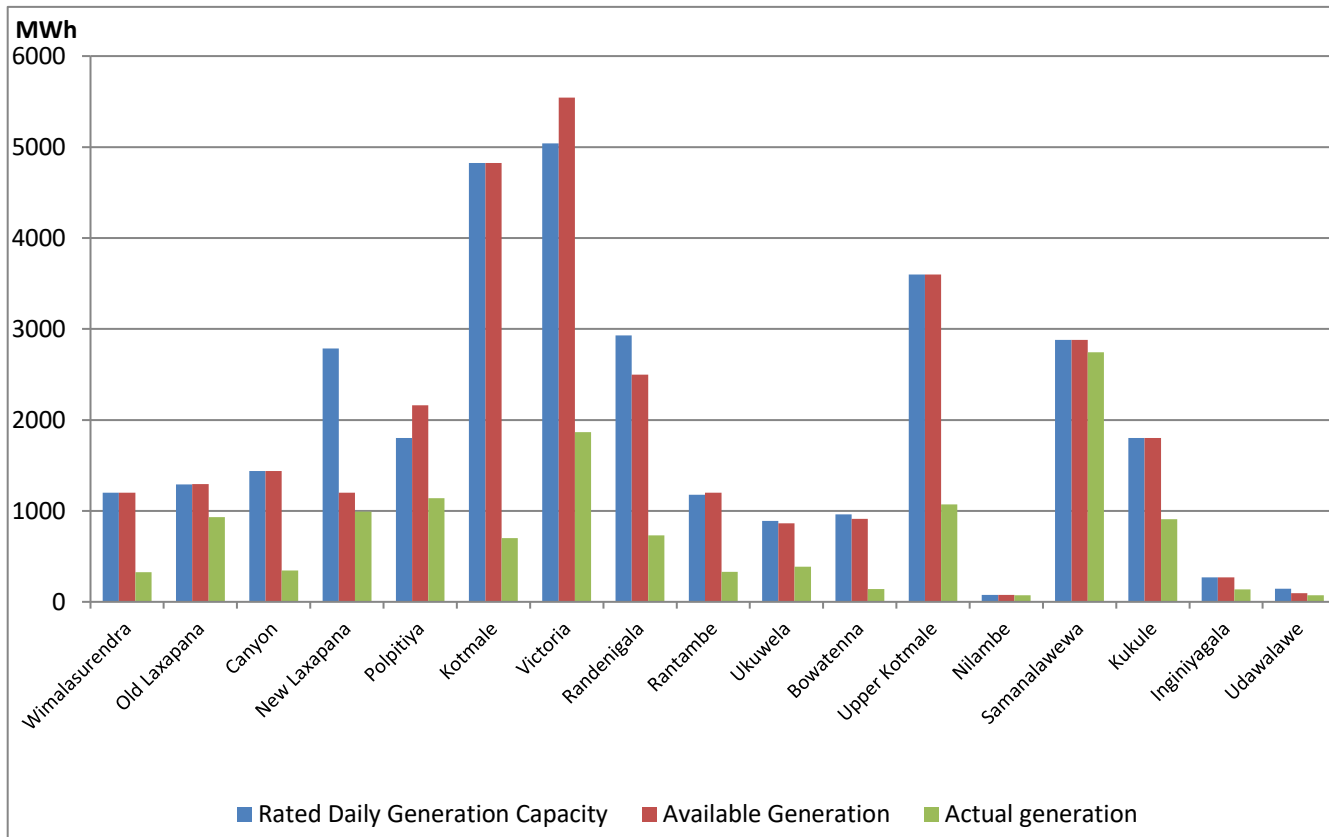
## IPP Thermal Plant Loading at the Night Peak



Note- Plant availability is recorded at 6.00 am on May 21, 2021

## Major Hydro Plant Dispatch

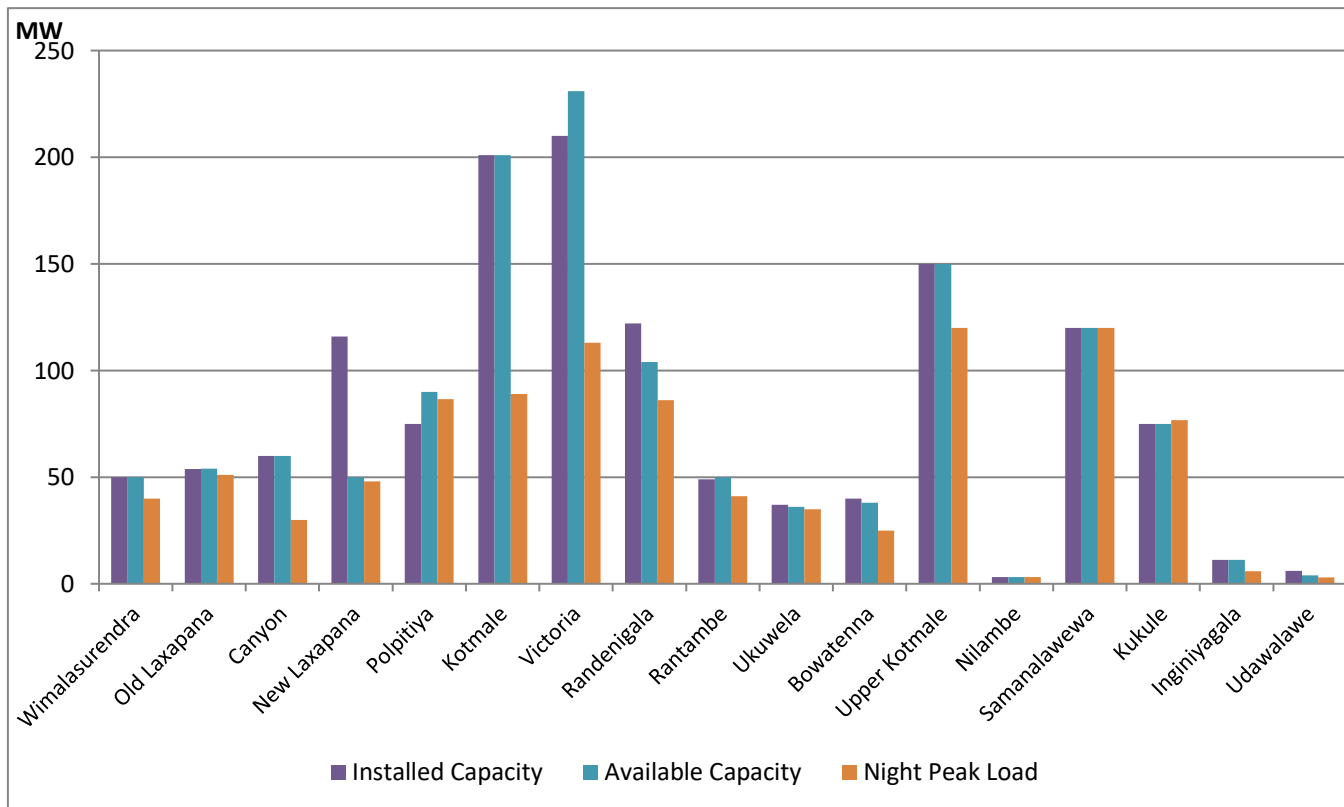
May 20, 2021



Note- Available Generation is estimated based on plant availability at 6.00am on May 21, 2021

## Major Hydro Plant Loading at Night Peak

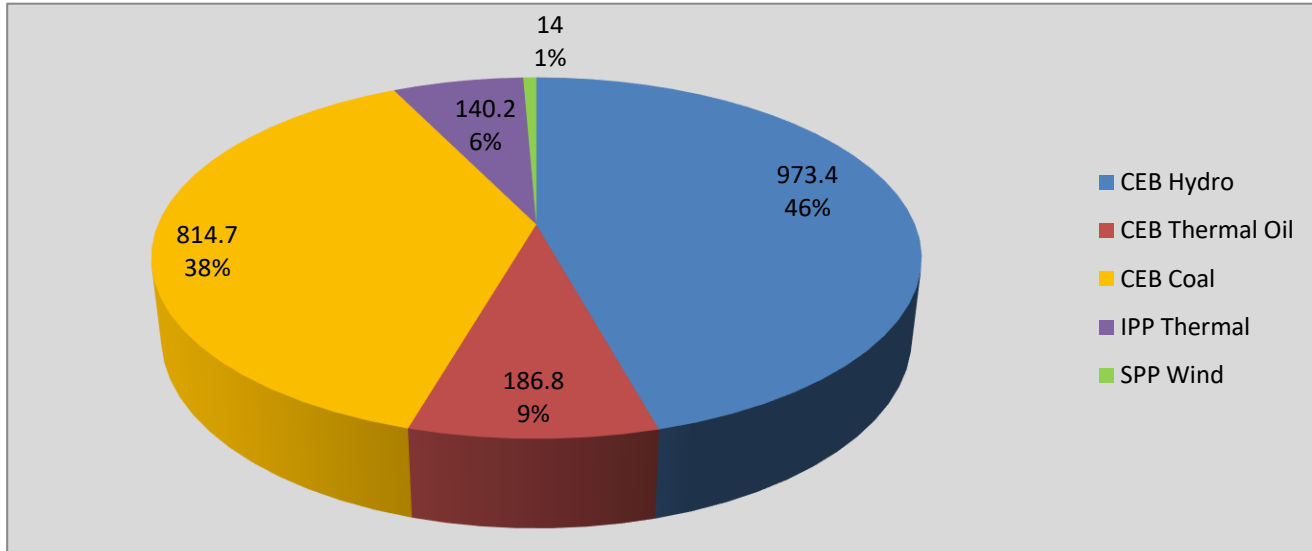
May 20, 2021



Note- Plant availability is recorded at 6.00 am on May 21, 2021

## Contribution to the Night Peak in MW

May 20, 2021



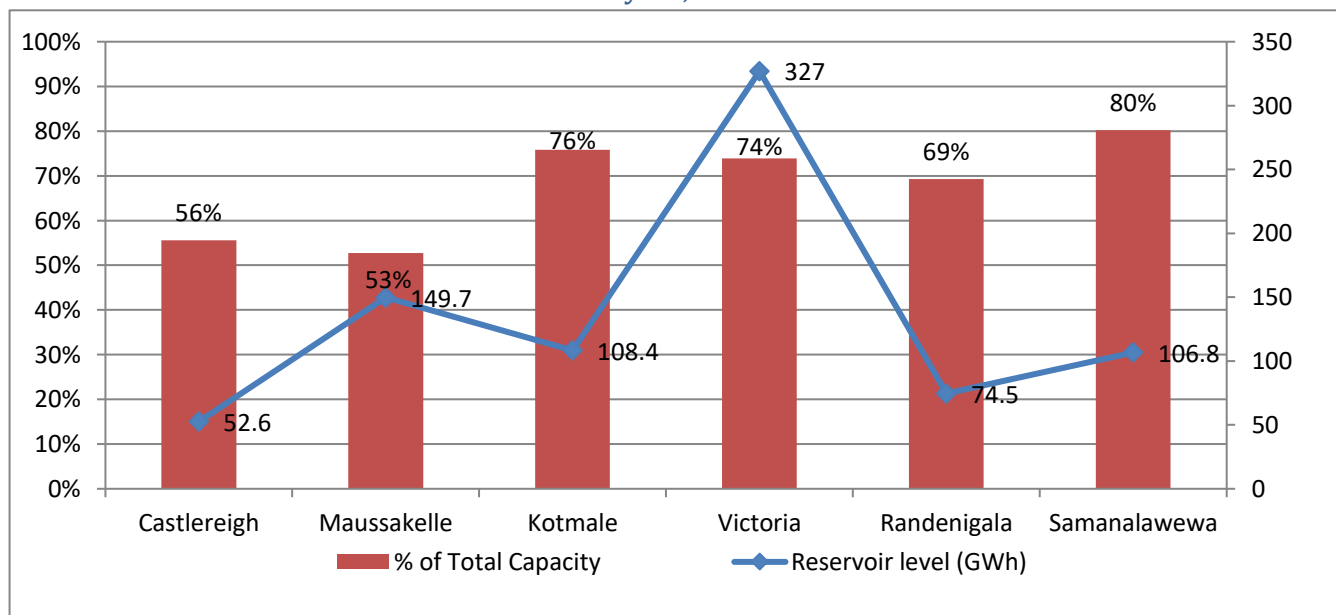
Night Peak*	2,223.9 MW
Day Peak	2,054.8 MW
Minimum Demand	1,334.3 MW

Notes: \*The above chart pattern and night peak figure is presented excluding the contribution of Moragahakanda, other minihydro and biomass power plants

\*\*Day peak and Minimum demand includes the contribution from Moragahakanda, wind and solar plants

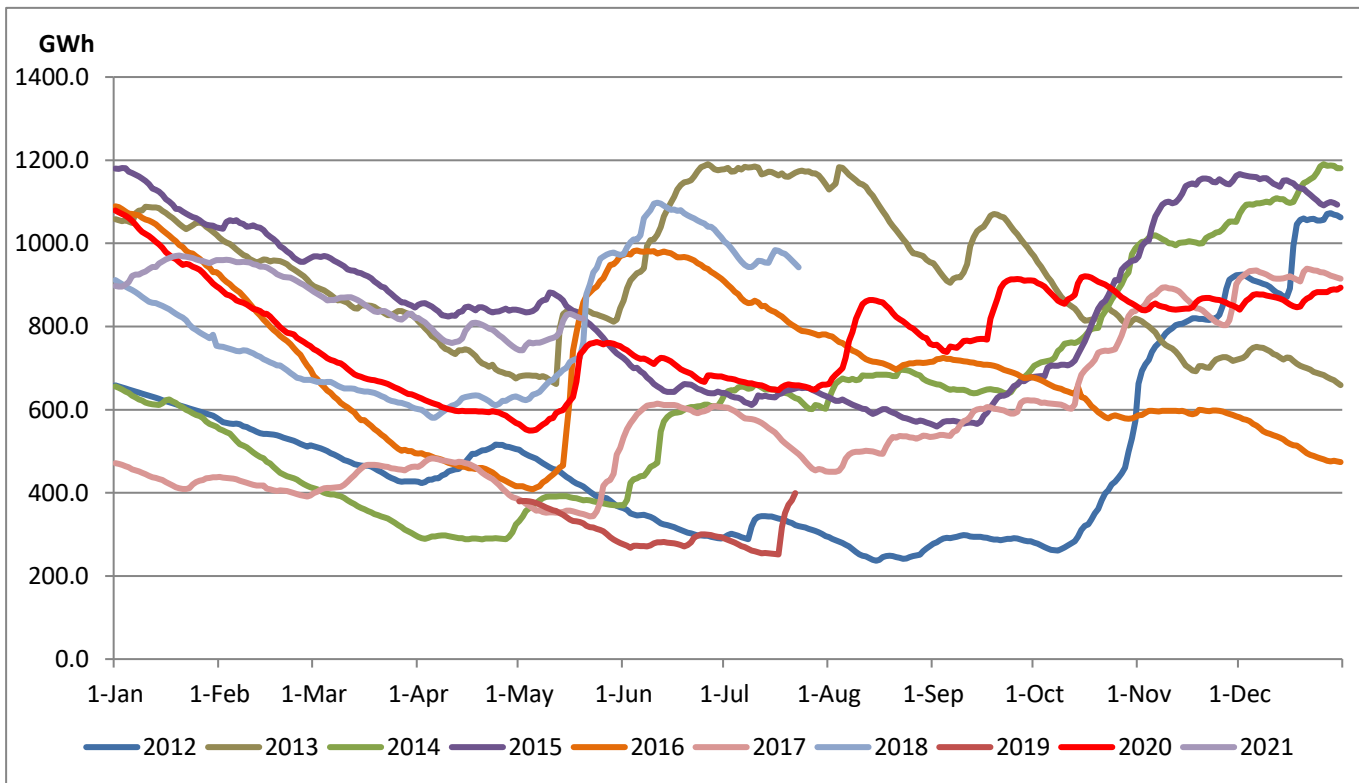
\* in addition to the night peak figure presented above, Moragahakanda plant, other MiniHydro and Biomass Plants of installed capacity 192.00 MW has recorded total 101.40 MW at night peak

## Reservoir Levels - as at 06.00 Hr on May 21, 2021



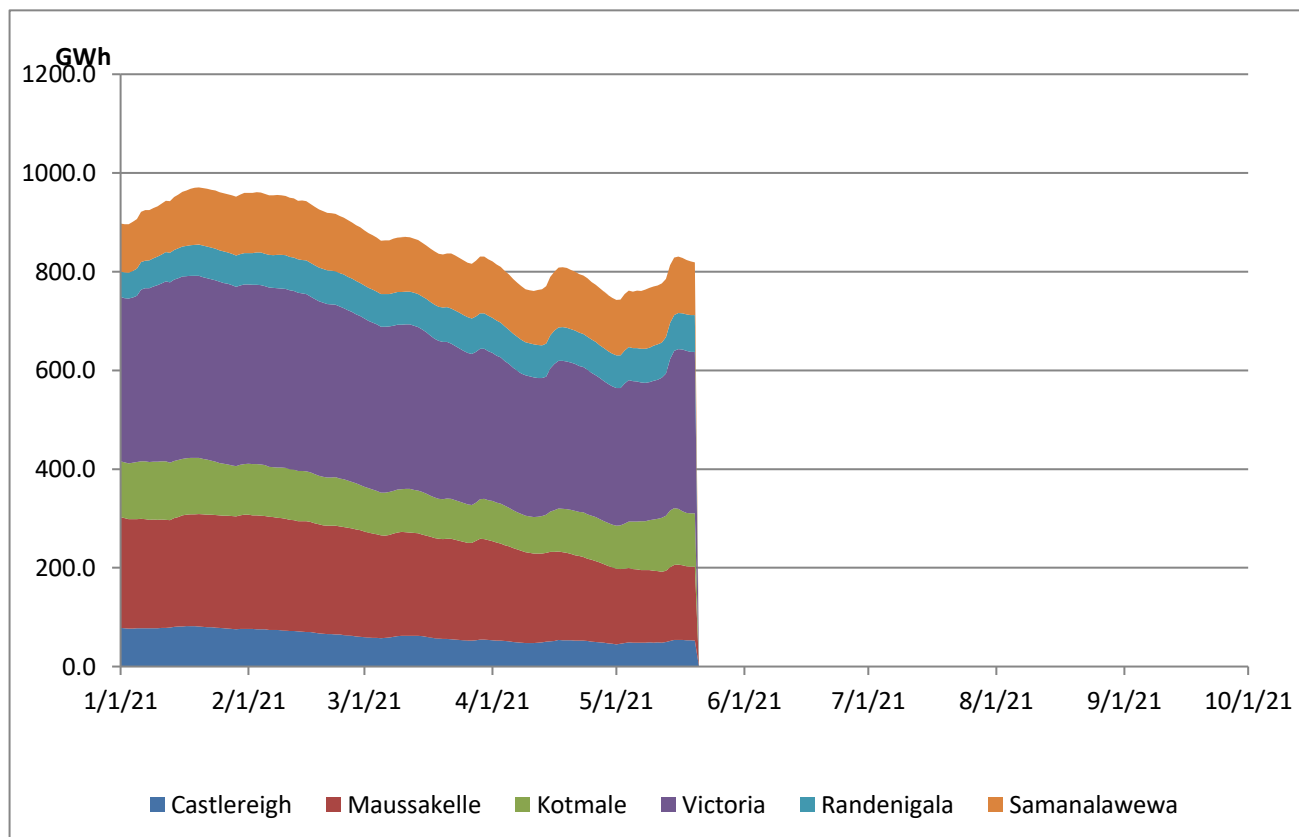
Total Reservoir Level(GWh)	819
% of Total capacity	68.0%

## Comparison of Total Reservoir Storage Levels with Past Years

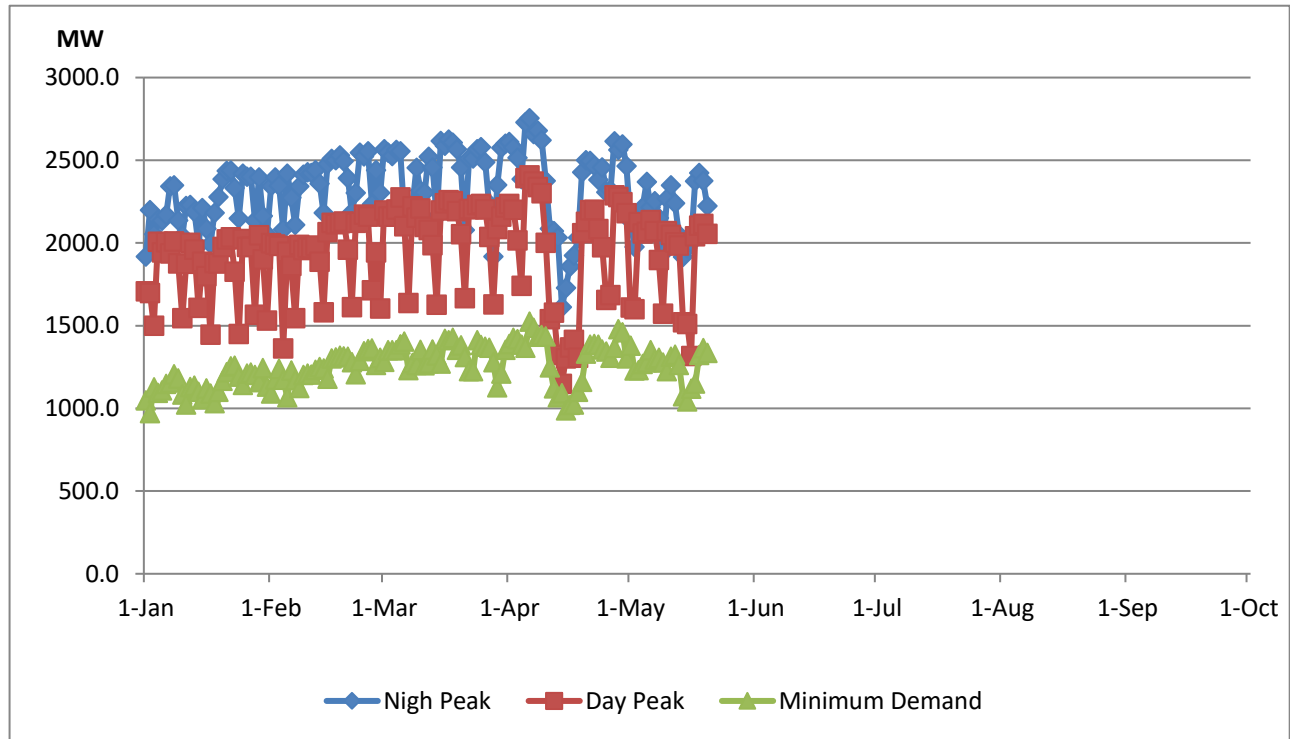


Data for 2018 and 2019 are only available for part of year.

## Variation of Major Hydro Reservoir Levels in the current year (GWh)



## Variation of Demand during the current year



### Notes:

The night peak is excluding the contribution from Mini hydro and biomass power plants

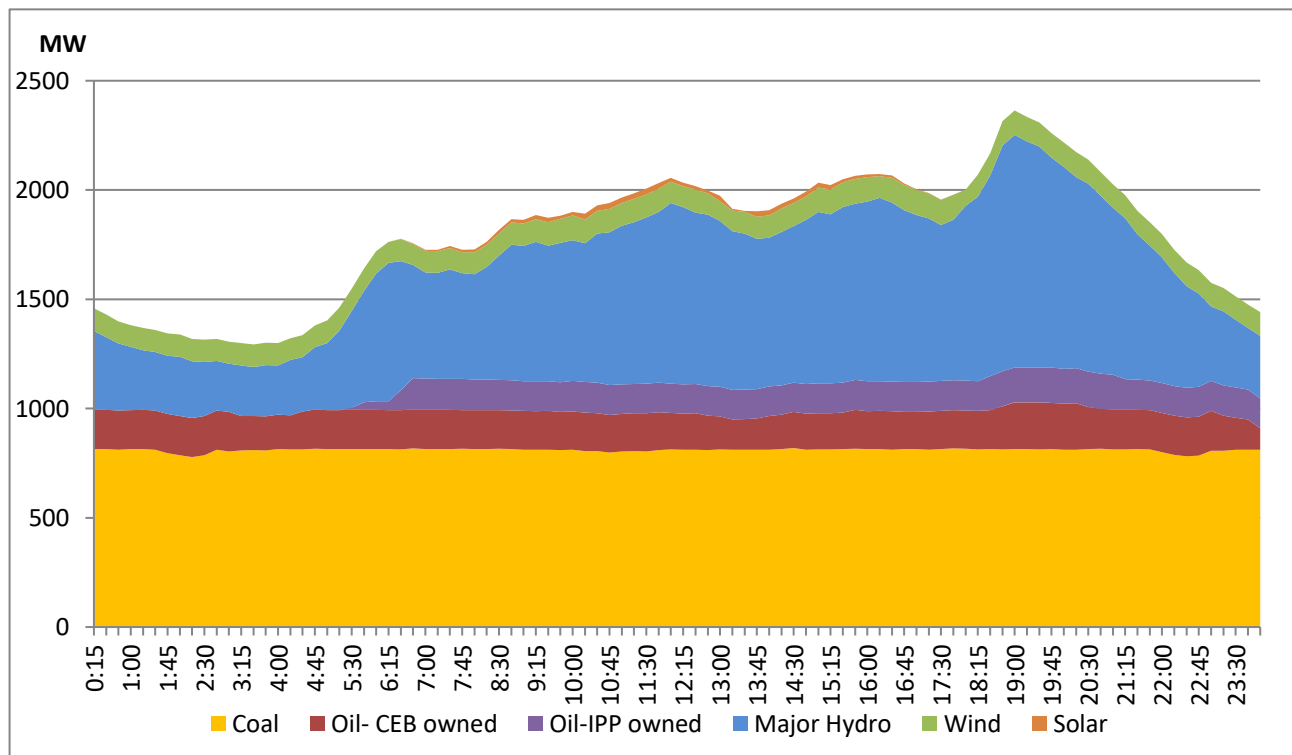
Day peak and minimum demand graphs includes the contribution from Moragahakanda power plant

All graphs include the contribution from telemetered solar and wind plants

## Daily Load Curve of the Previous day

May 19, 2021

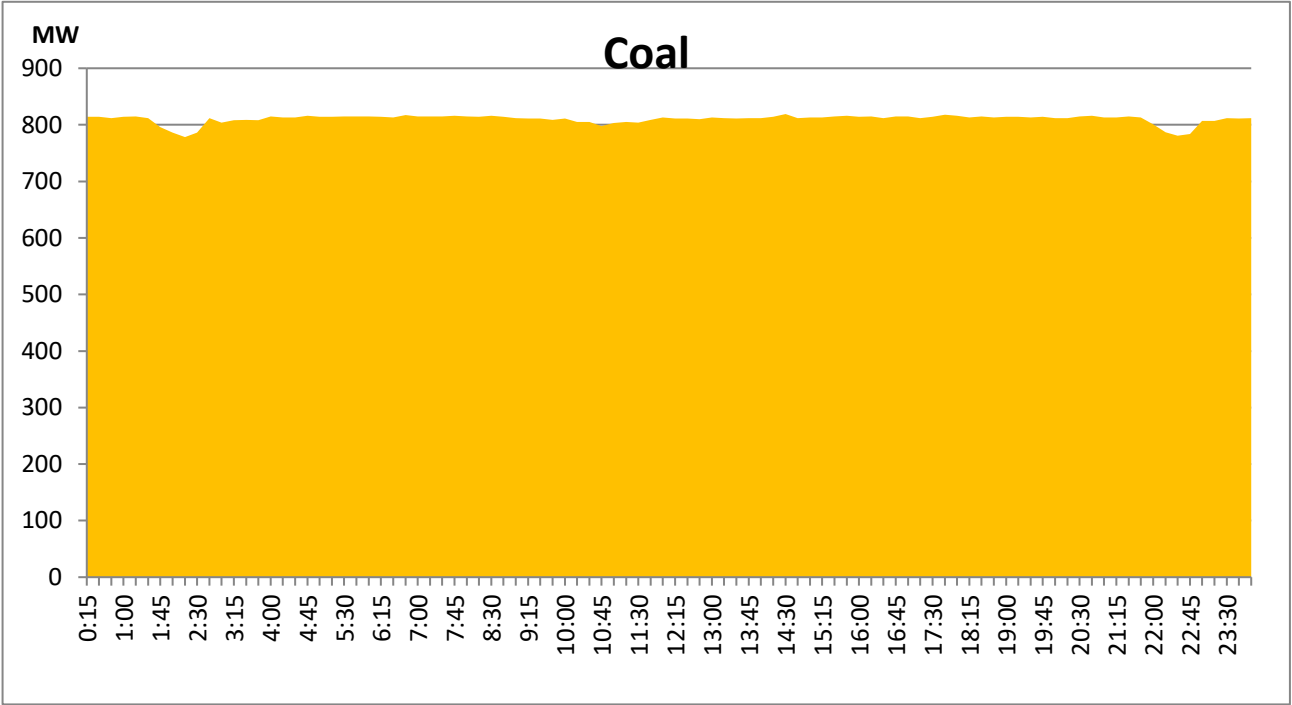
Solar and wind data is based on Telemetered Power Stations only





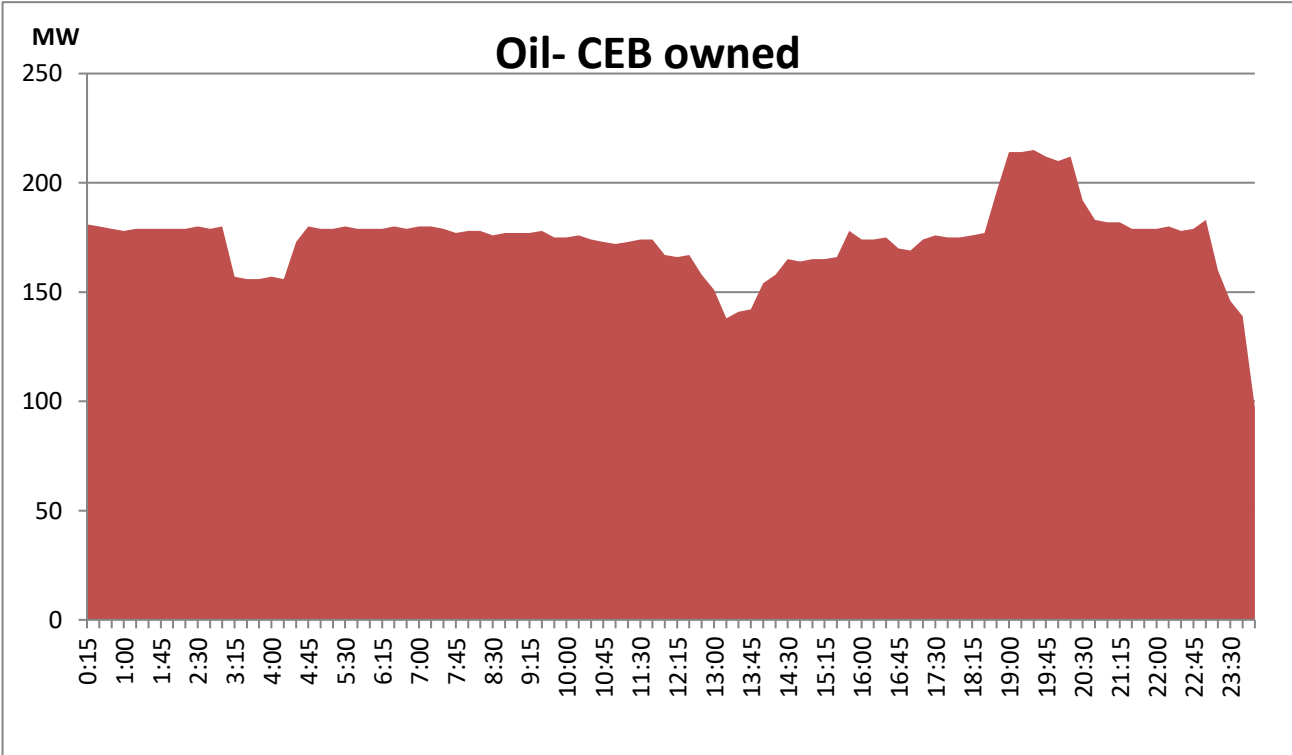
**Coal Generation during the Previous day**

**May 19, 2021**



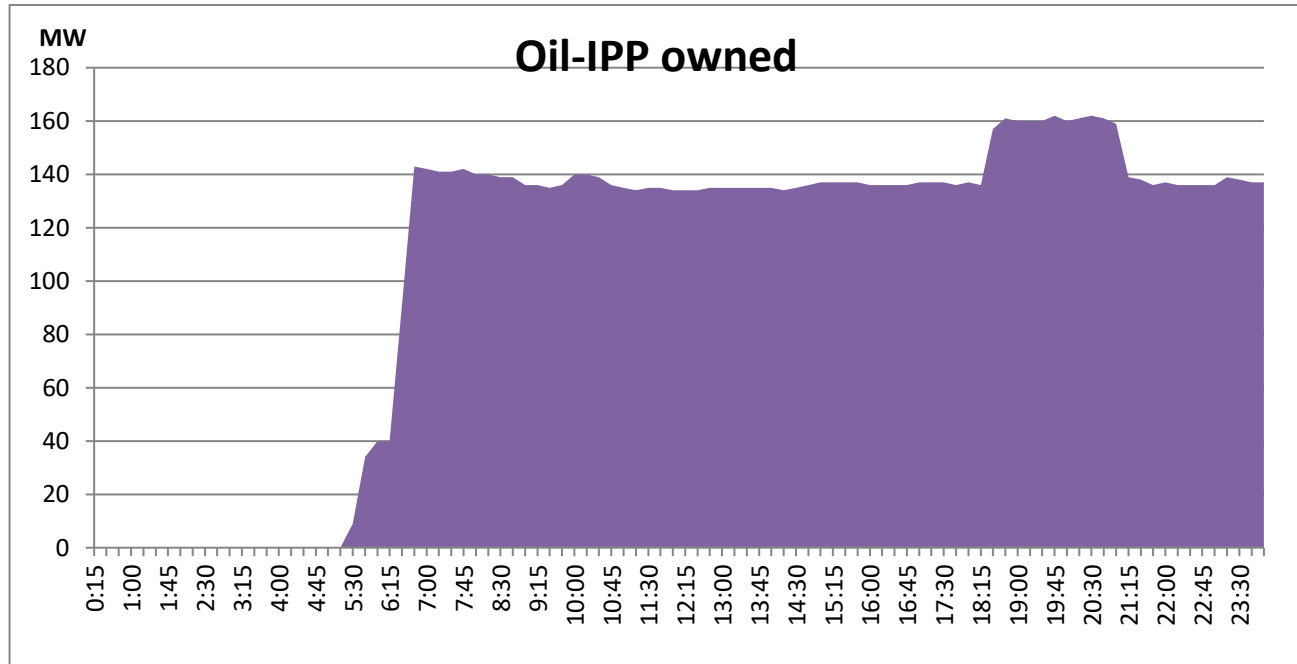
**CEB Oil Plant Generation during the Previous day**

**May 19, 2021**



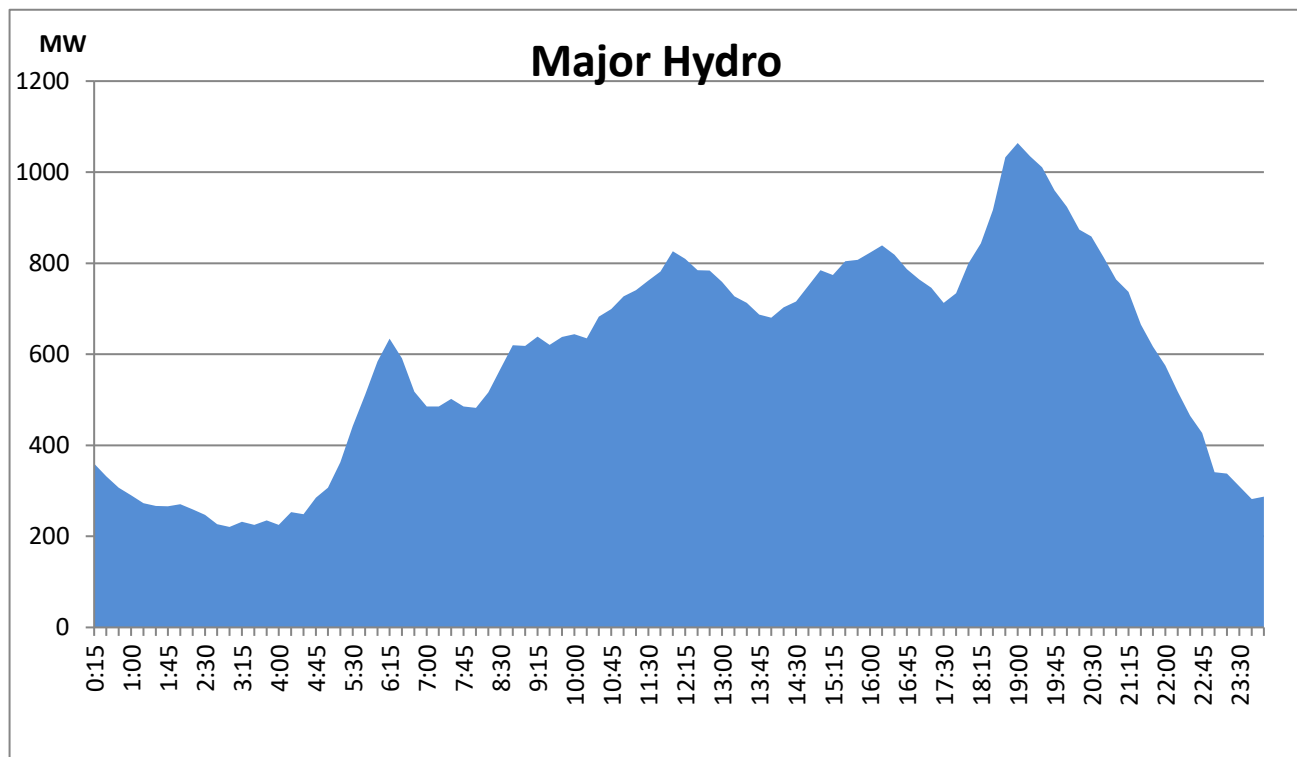
### IPP Oil Plant Generation during the Previous day

May 19, 2021



### Major Hydro Generation during the Previous day

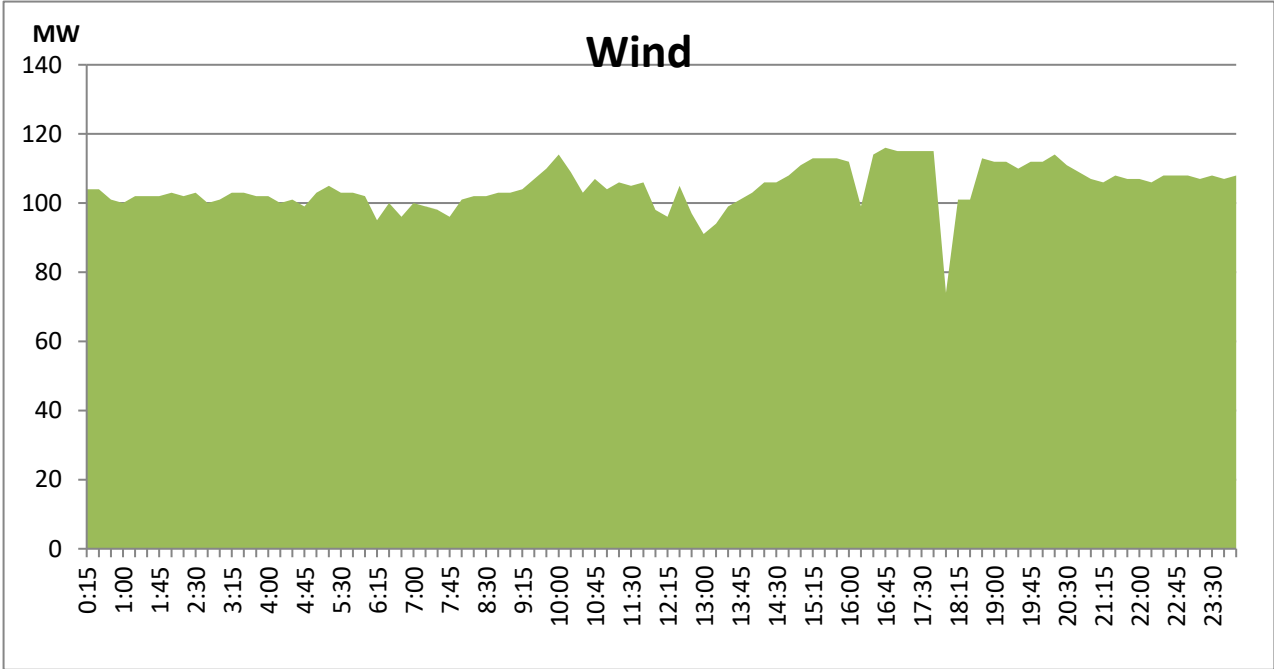
May 19, 2021



# Wind Generation during the Previous day

May 19, 2021

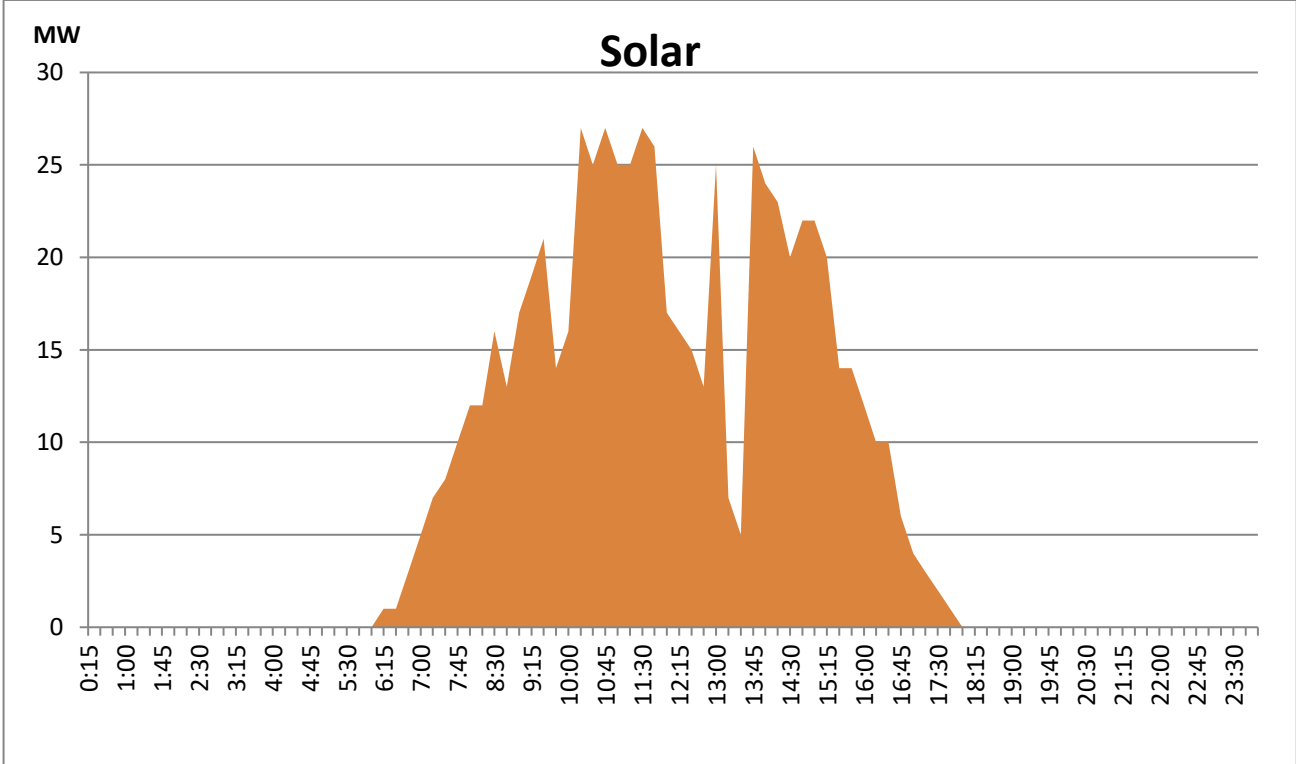
Based on Telemetered Power Stations only



# Solar Generation during the Previous day

May 19, 2021

Based on Telemetered Power Stations only



Summary of Major Plant performance

Plant	Installed Capacity (MW)	Plant Availability (MW)	Night peak Load (MW)	Plant Dispatch (GWh)
Wimalasurendra	50.00	50.00	40.00	325.00
Old Laxapana	53.80	54.00	51.10	932.00
Canyon	60.00	60.00	30.00	343.00
New Laxapana	116.00	50.00	48.00	993.00
Polpitiya	75.00	90.00	86.50	1,141.00
Kotmale	201.00	201.00	89.00	700.00
Victoria	210.00	231.00	113.00	1,866.00
Randenigala	122.00	104.00	86.00	730.00
Rantambe	49.00	50.00	41.00	331.00
Ukuwela	37.00	36.00	35.00	385.00
Bowatenna	40.00	38.00	25.00	140.00
Upper Kotmale	150.00	150.00	120.00	1,070.00
Nilambe	3.20	3.20	3.20	73.00
Samanalawewa	120.00	120.00	120.00	2,745.00
Kukule	75.00	75.00	76.70	909.00
Inginiyagala	11.25	11.25	5.90	137.00
Udawalawe	6.00	4.00	3.00	71.00
Puttalam Coal I	275.00	270.00	273.00	6,524.00
Puttalam Coal II	275.00	270.00	270.00	6,469.00
Puttalam Coal III	275.00	270.00	272.00	6,523.00
KPS Small GTs	65.20	32.00	-	-
KPS GT 7	113.00	115.00	-	-
KCCP	161.00	150.00	-	-
Sapugaskanda A	69.60	50.00	49.00	1,048.00
Sapugaskanda B	69.60	54.00	53.00	1,216.00
Uthura Janani	26.01	24.00	23.30	346.00
Barge CEB	60.00	60.00	61.00	1,030.00
CEB-Thulhiriya	10.00	7.20	-	-
CEB-Kolonnawa	20.00	12.80	-	-
CEB-Mathugama	20.00	14.20	-	-
ACE Matara	20.00	-	-	-
Asia Power	50.80	-	-	-
AES - Kelanitissa	163.00	163.00	-	-
Westcoast	270.00	270.00	140.00	2,725.00
ACE Embilipitiya	100.00	-	-	-
Vpower-Pallekele	24.00	-	-	-
Vpower-Galle	10.00	-	-	-
Vpower-Hamba.	24.00	-	-	-
Vpower-Horana	24.00	-	-	-
Altaaqa-Mahiya.	10.00	-	-	-
Vpower-Valach.	24.00	24.00	-	-
Solar	58.00		-	247.00
Wind	128.00		108.90	3,454.00
MH and BM	394.00		101.40	Not available
Total without NCRE	3,538.46	3,113.65		

Night peak load of MH and BM only include loading of Minihydro plants of total capacity MW 192

Installed capacity of Solar, wind, Mini-hydro and Biomass plants are as of end of December 2019

Plant availability is the availability recorded at 6 am on

May 21, 2021

**Thermal Plant Fuel types**

<b>Power Station</b>	<b>Primary Fuel</b>
<b>CEB Thermal</b>	
<b>Sapugaskanda 1</b>	Heavy Fuel
<b>Sapugaskanda 2</b>	Heavy Fuel
<b>Kelanitissa Small Gas Turbines</b>	Auto Diesel
<b>GT 7 - Kelanitissa</b>	Auto Diesel
<b>Kelanitissa CCY</b>	Naptha & Diesel
<b>Lakvijaya 1</b>	Coal
<b>Lakvijaya 2</b>	Coal
<b>Lakvijaya 3</b>	Coal
<b>Uthuru Janani</b>	Heavy Fuel
<b>Barge CEB</b>	Furnace Oil

<b>Power Station</b>	<b>Primary Fuel</b>
<b>Private Thermal</b>	
<b>Asia Power</b>	Heavy Fuel
<b>Sojitz -</b>	Auto Diesel
<b>West Coast</b>	Low Sulphur Furnace oil
<b>ACE Embilipitiya</b>	Furnace Oil

**Major Incidents during the day -as reported by CEB morning of May 21, 2021**

- 1) Maliboda-Polpitiya cct tripped and auto-reclosed at 11:54 hrs due to operation of differential protection.
- 2) Kosgama-Kolonnawa cct tripped and auto-reclosed at 18:38 hrs due to operation of distance protection.
- 3) Kilinochchi-Chunnakam cct 02 tripped at 22:31 hrs due to operation of distance protection. The cct was normalized by 22:47 hrs. The cct tripped again and auto-reclosed at 23:33 hrs.