

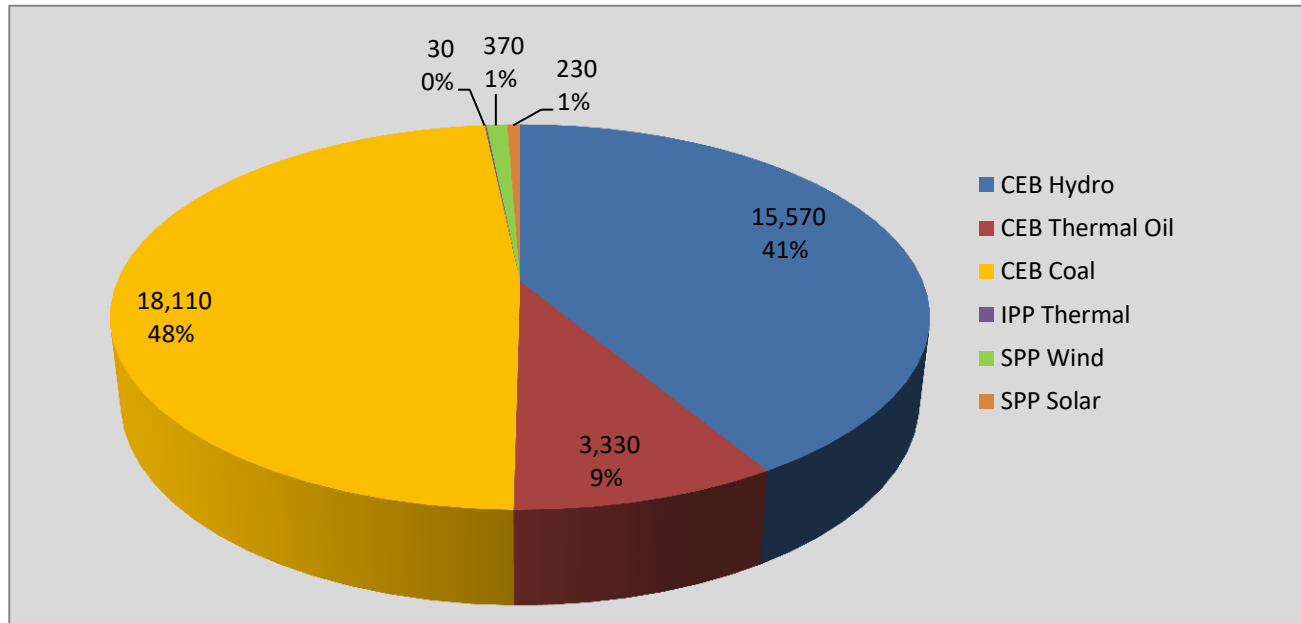
# **Generation and Reservoirs Statistics**

**May 13, 2021**



**PUBLIC UTILITIES COMMISSION OF SRI LANKA**

## Daily Generation Mix in MWh



**Total Generation 38,730 MWh**

Note: Generation from other SPPs (Mini Hydro and Biomass) is not included

## Cumulative Dispatch

Note: Generation from other SPPs (Mini Hydro, small scale Solar and Biomass) is not included

### For Current Month

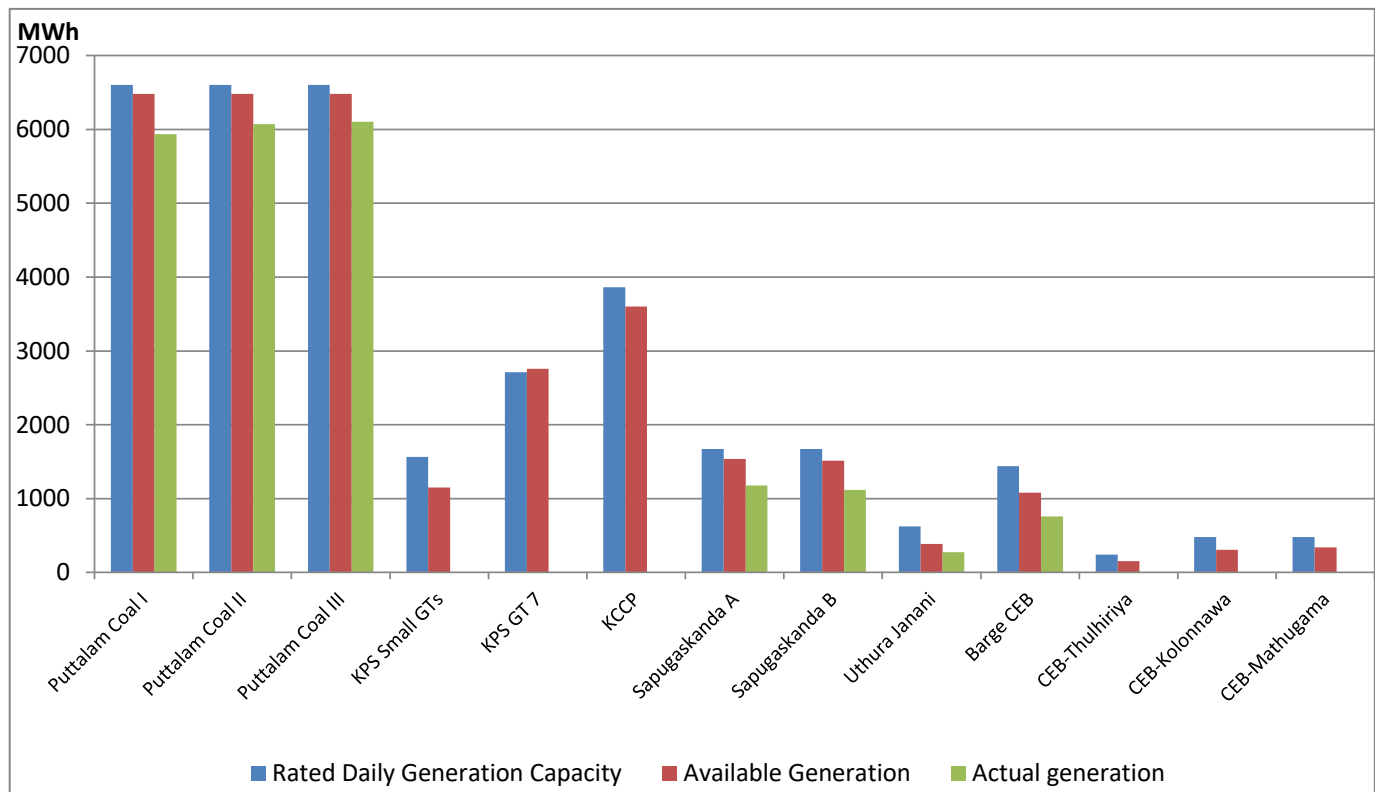
Category	Dispatch (GWh)	
CEB Hydro	179.7	34.66%
CEB Thermal Oil	60.4	11.65%
CEB Coal	242.7	46.80%
IPP Thermal	25.5	4.91%
SPP Wind	2.1	0.41%
SPP Solar	3.2	0.62%
<b>Total</b>	<b>518.4</b>	

### For Current Year

Category	Dispatch (GWh)	
CEB Hydro	1,193.4	21.79%
CEB Thermal Oil	669.1	12.21%
CEB Coal	2,507.2	45.77%
IPP Thermal	1,022.4	18.67%
SPP Wind	36.2	0.66%
SPP Solar	34.1	0.62%
<b>Total</b>	<b>5,477.7</b>	

## CEB Thermal Plant Dispatch

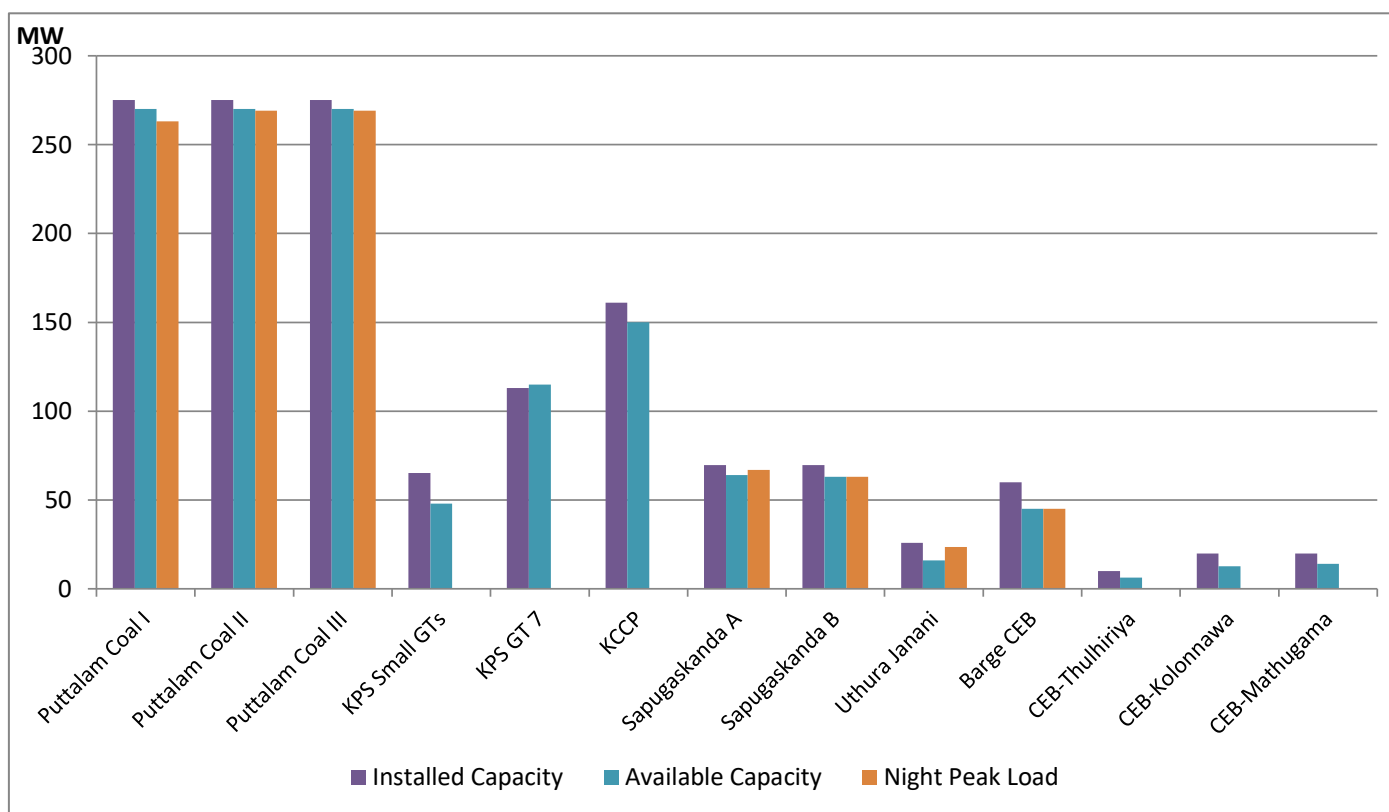
May 13, 2021



Available Generation is estimated based on plant availability at 6.00am on

May 14, 2021

## CEB Thermal Plant Loading at the Night Peak

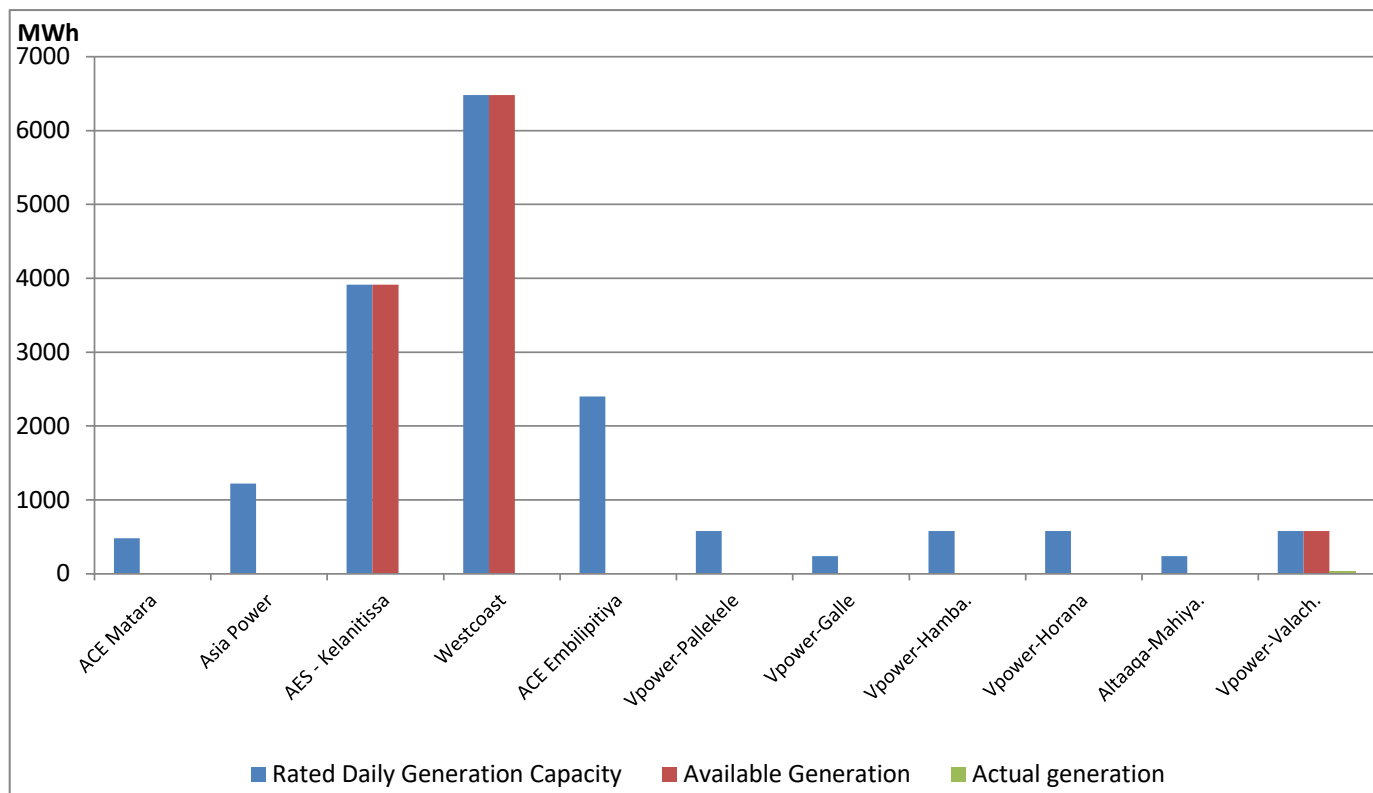


Note- Plant availability is recorded at 6.00 am on May 14, 2021

## IPP Thermal Plant Dispatch

May 13, 2021

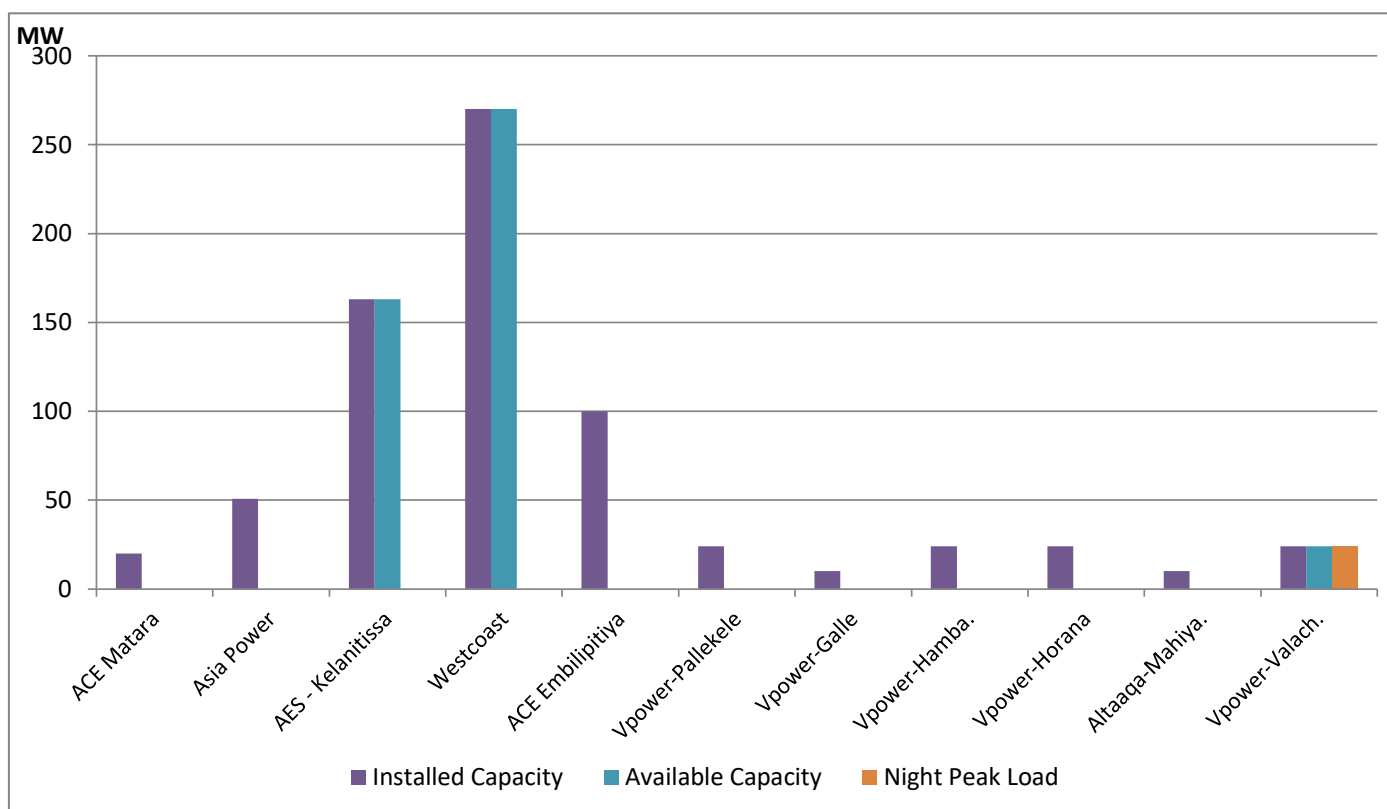
ACE Embilipitiya, ACE Matara, Asia Power, V Power Pallekale, Vpower Galle, V Power Horana, Vpower Hambantota and Altaqa Mahiyangana are not available due to expiration of PPAs



Available Generation is estimated based on plant availability at 6.00am on

May 14, 2021

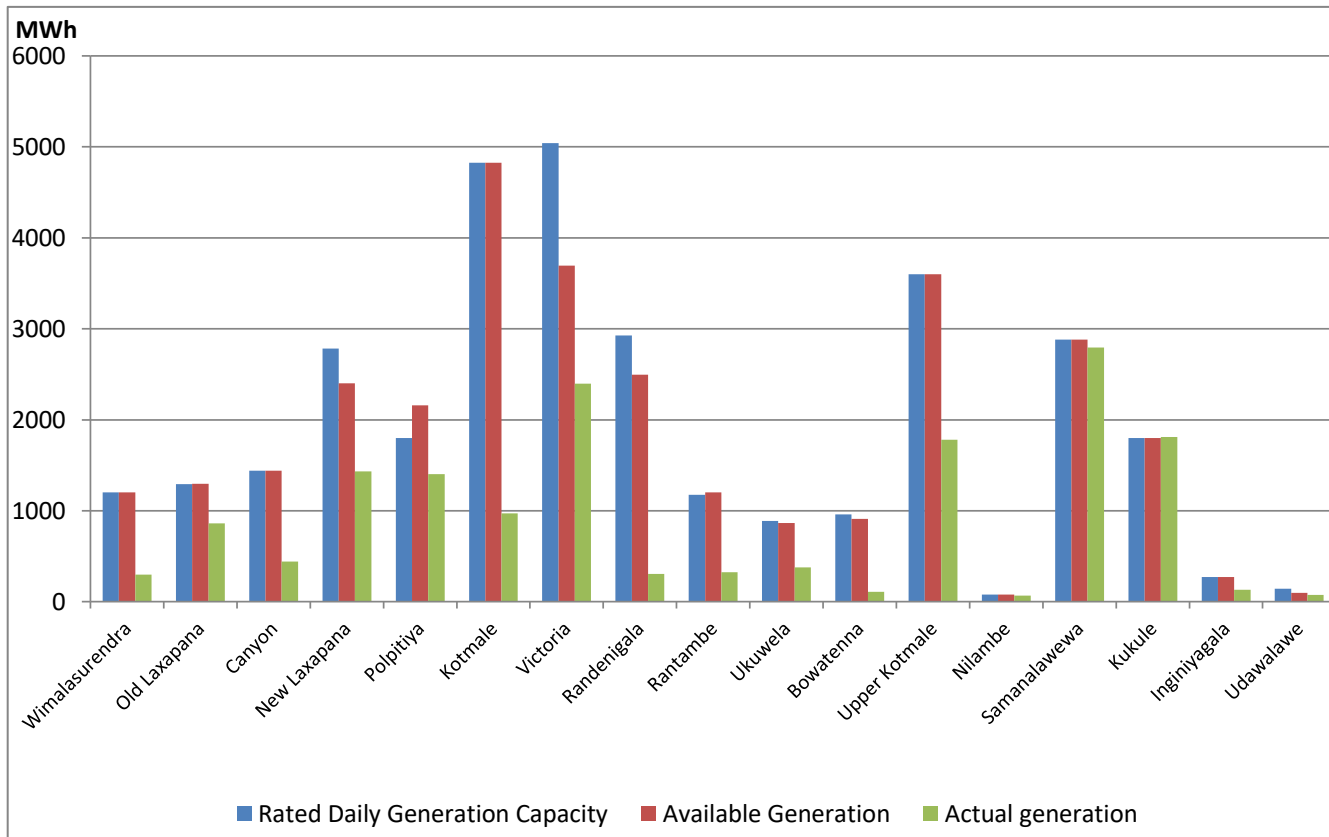
## IPP Thermal Plant Loading at the Night Peak



Note- Plant availability is recorded at 6.00 am on May 14, 2021

## Major Hydro Plant Dispatch

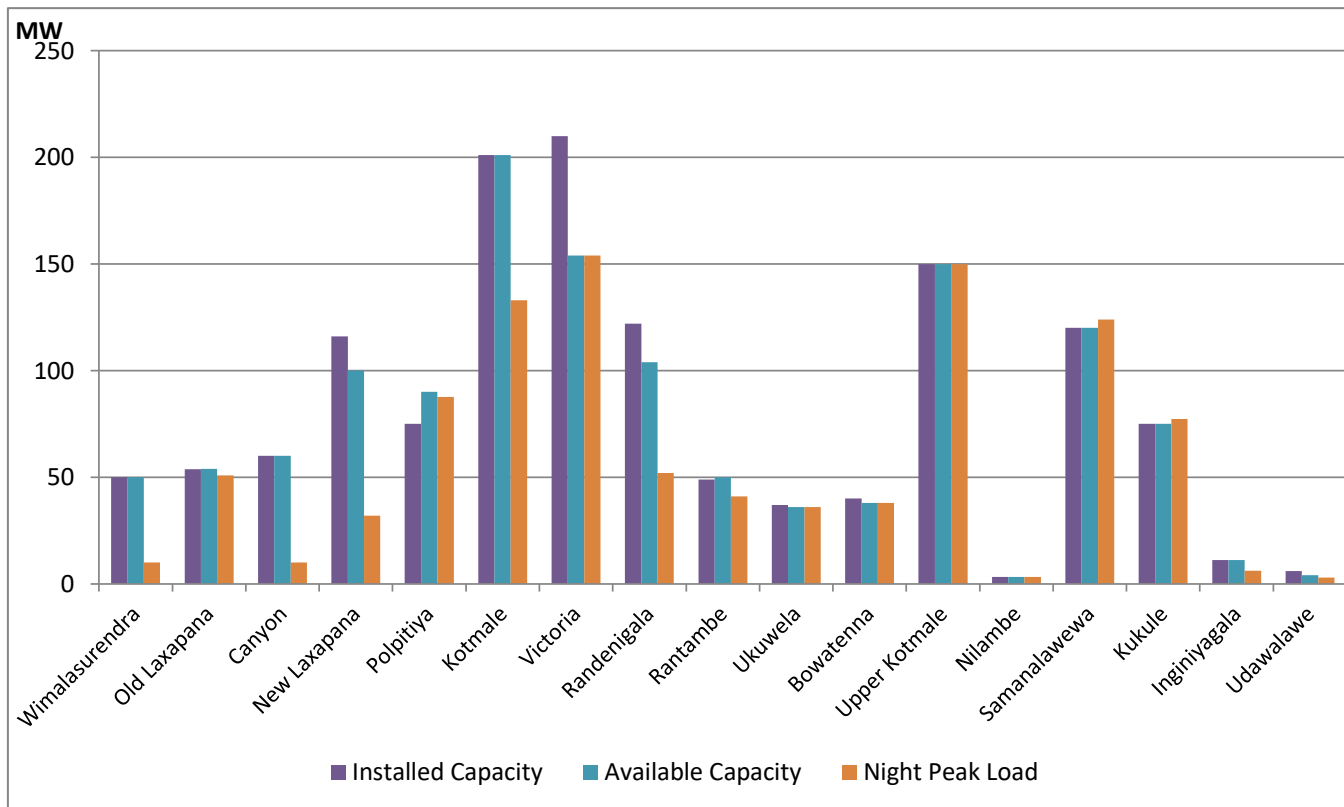
May 13, 2021



Note- Available Generation is estimated based on plant availability at 6.00am on May 14, 2021

## Major Hydro Plant Loading at Night Peak

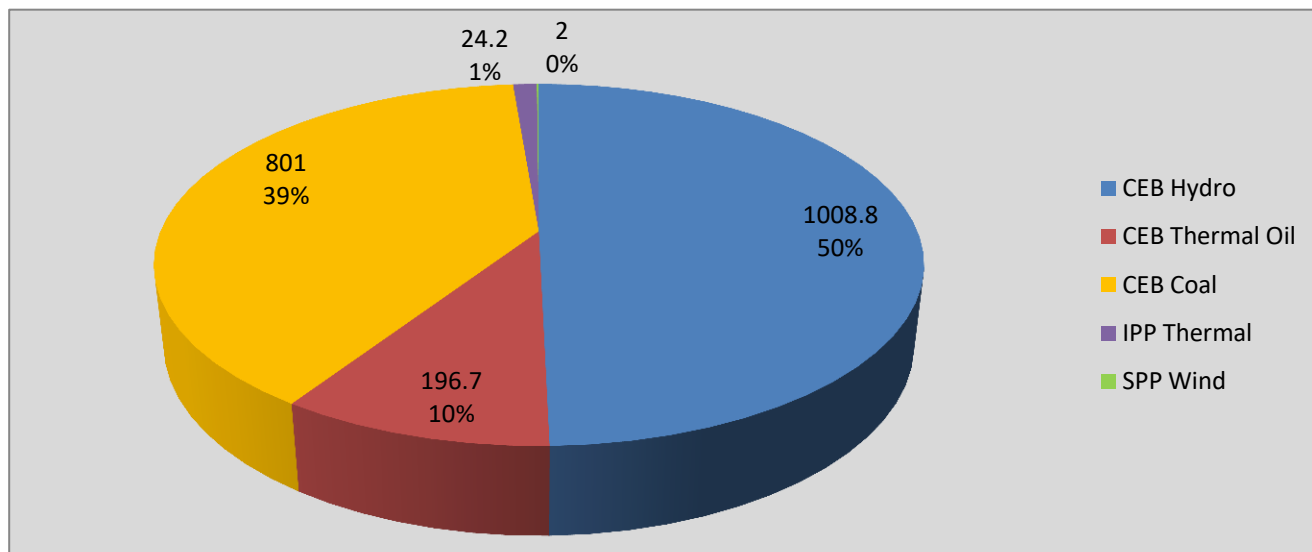
May 13, 2021



Note- Plant availability is recorded at 6.00 am on May 14, 2021

## Contribution to the Night Peak in MW

May 13, 2021



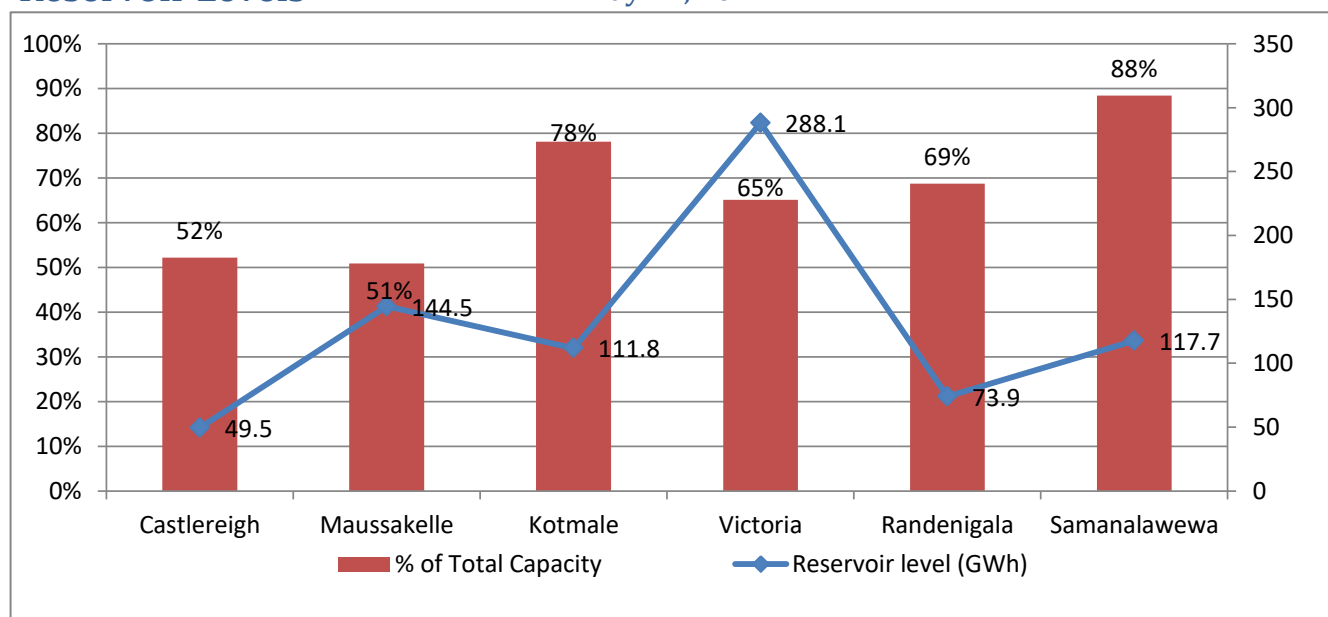
Night Peak*	2,048.6	MW
Day Peak	1,984.8	MW
Minimum Demand	1,263.2	MW

Notes: \*The above chart pattern and night peak figure is presented excluding the contribution of Moragahakanda, other minihydro and biomass power plants

\*\*Day peak and Minimum demand includes the contribution from Moragahakanda, wind and solar plants

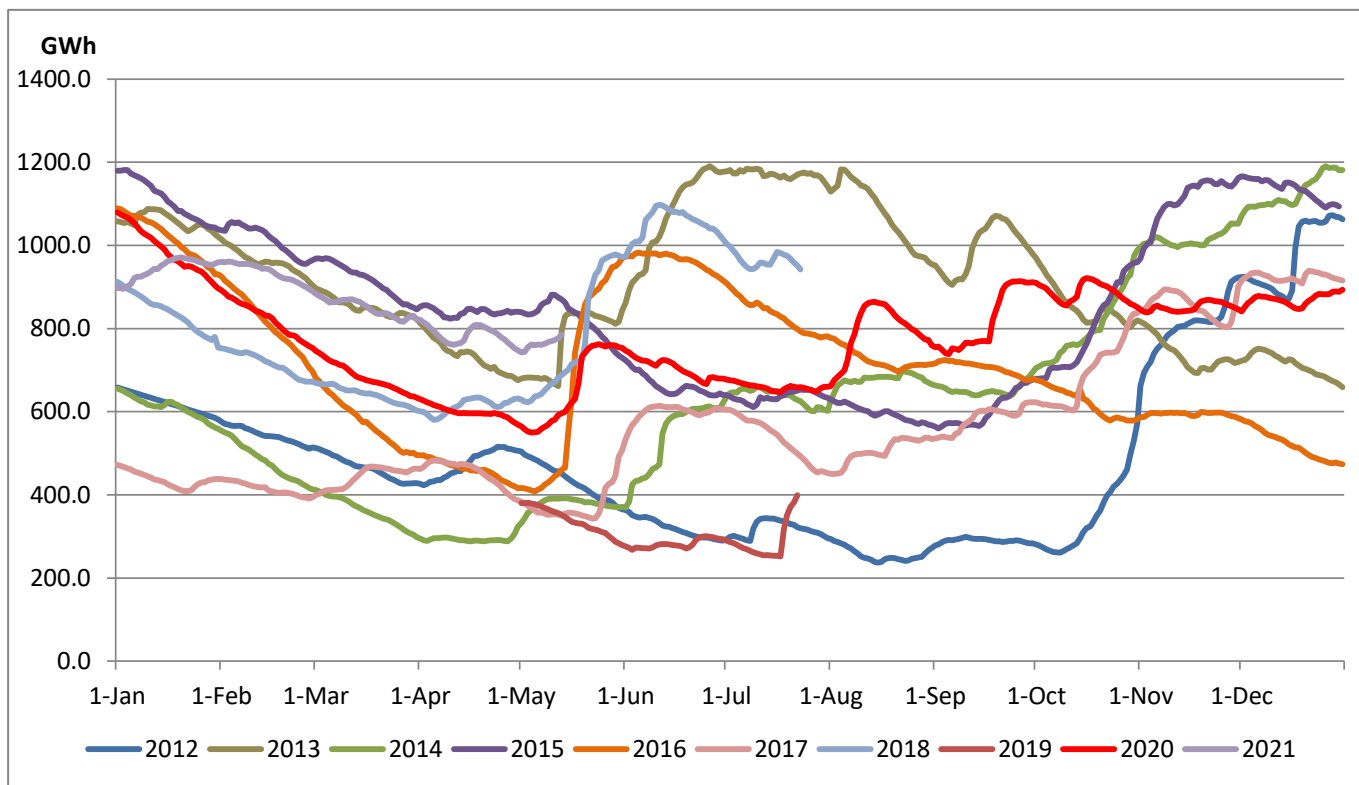
\* in addition to the night peak figure presented above, Moragahakanda plant, other MiniHydro and Biomass Plants of installed capacity 185.00 MW has recorded total 147.60 MW at night peak

## Reservoir Levels - as at 06.00 Hr on May 14, 2021



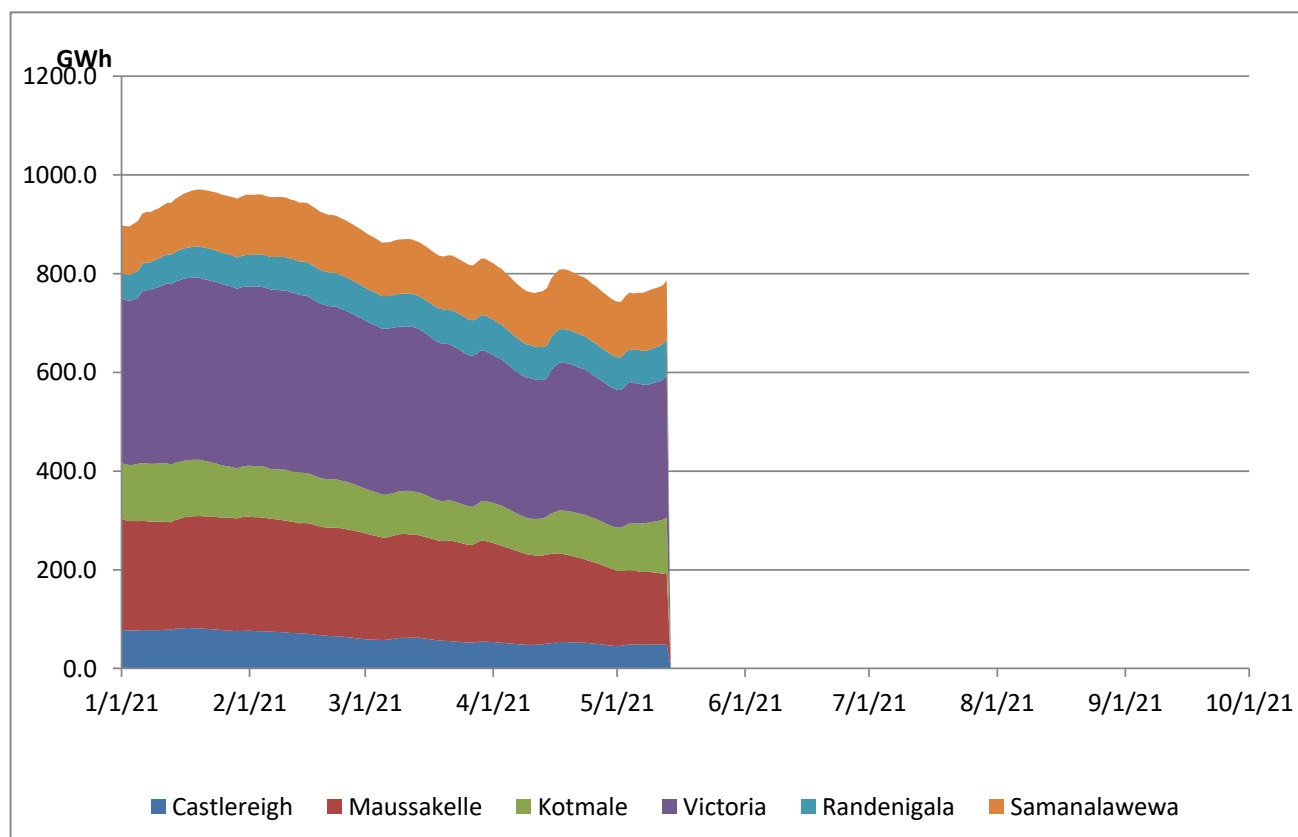
Total Reservoir Level(GWh)	785.5
% of Total capacity	65.2%

## Comparison of Total Reservoir Storage Levels with Past Years

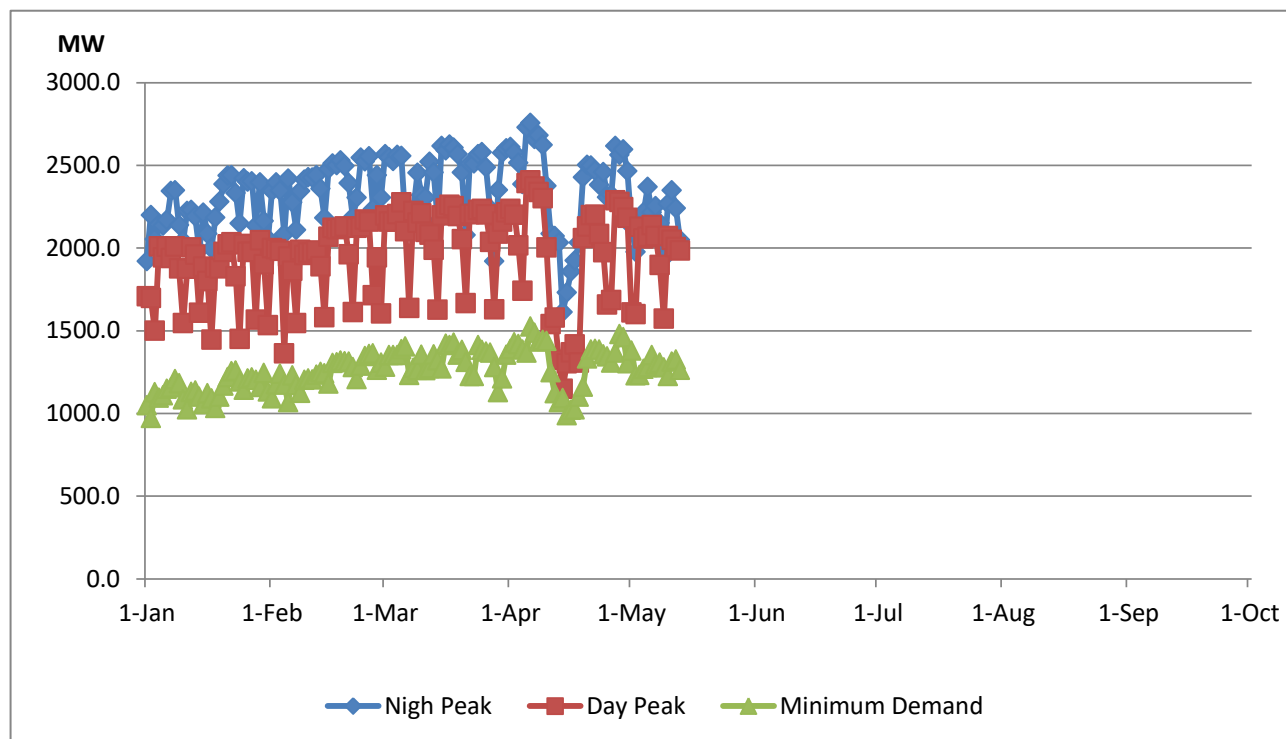


Data for 2018 and 2019 are only available for part of year.

## Variation of Major Hydro Reservoir Levels in the current year (GWh)



## Variation of Demand during the current year



### Notes:

The night peak is excluding the contribution from Minihydro and biomass power plants

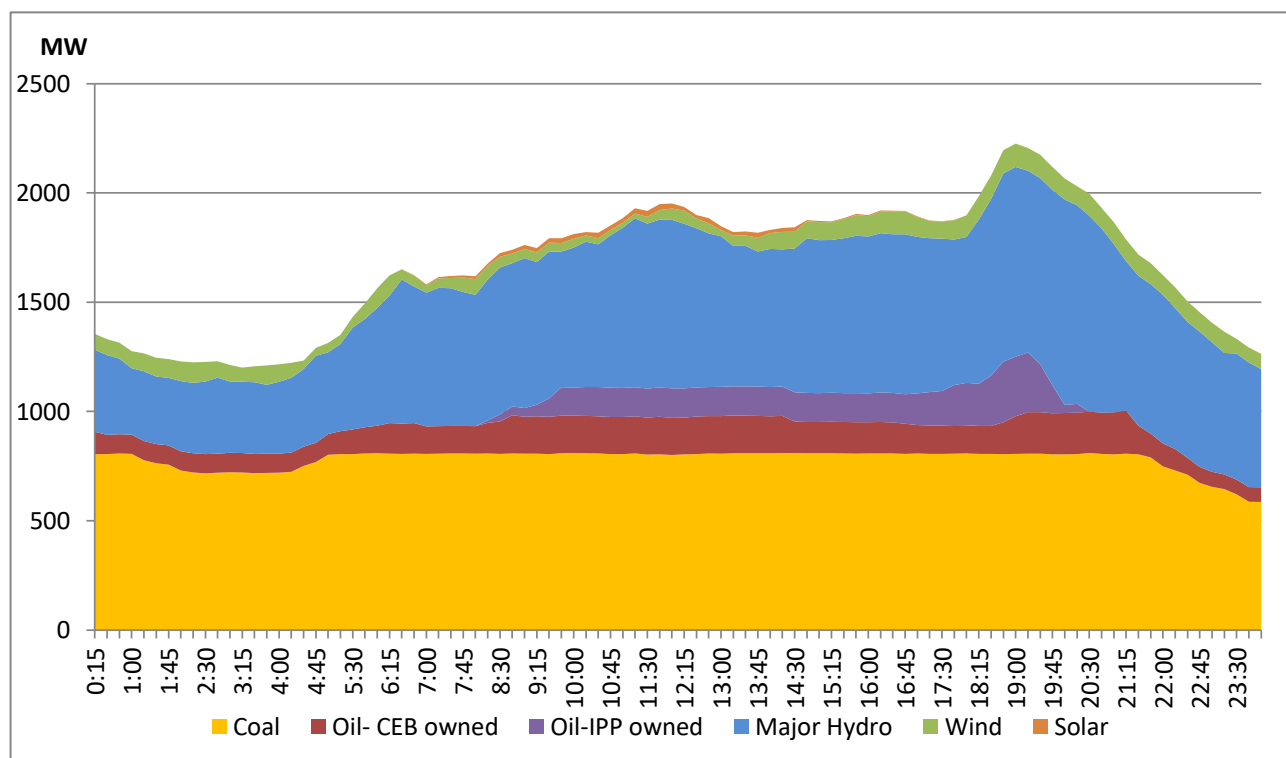
Day peak and minimum demand graphs includes the contribution from Moragahakanda power plant

All graphs include the contribution from telemetered solar and wind plants

## Daily Load Curve of the Previous day

May 12, 2021

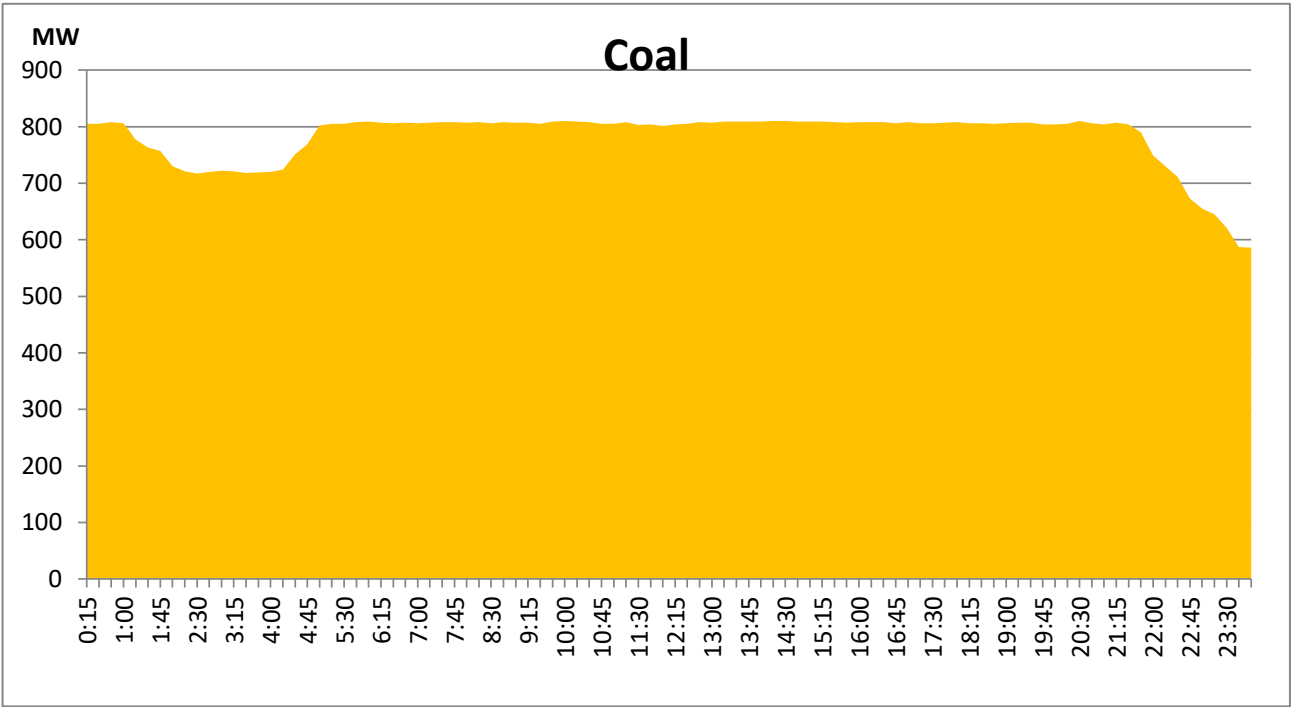
Solar and wind data is based on Telemetered Power Stations only





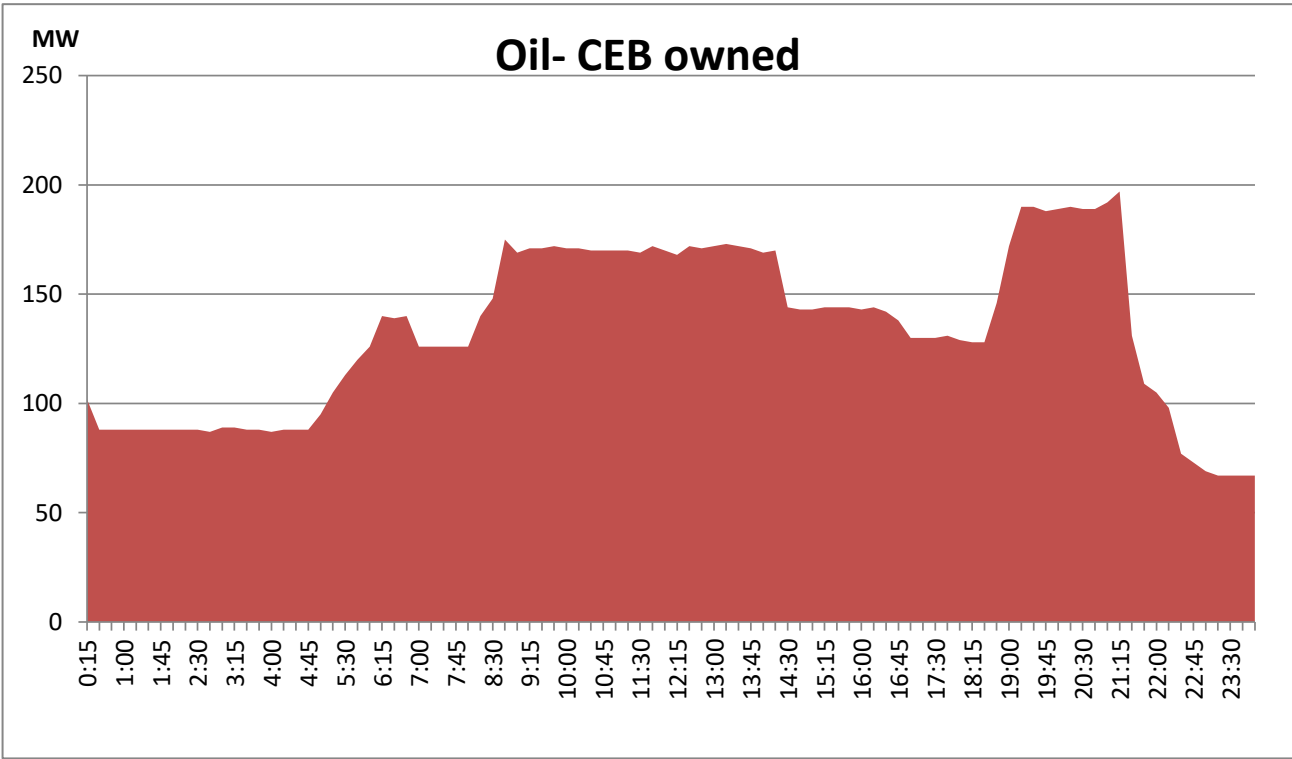
Coal Generation during the Previous day

May 12, 2021



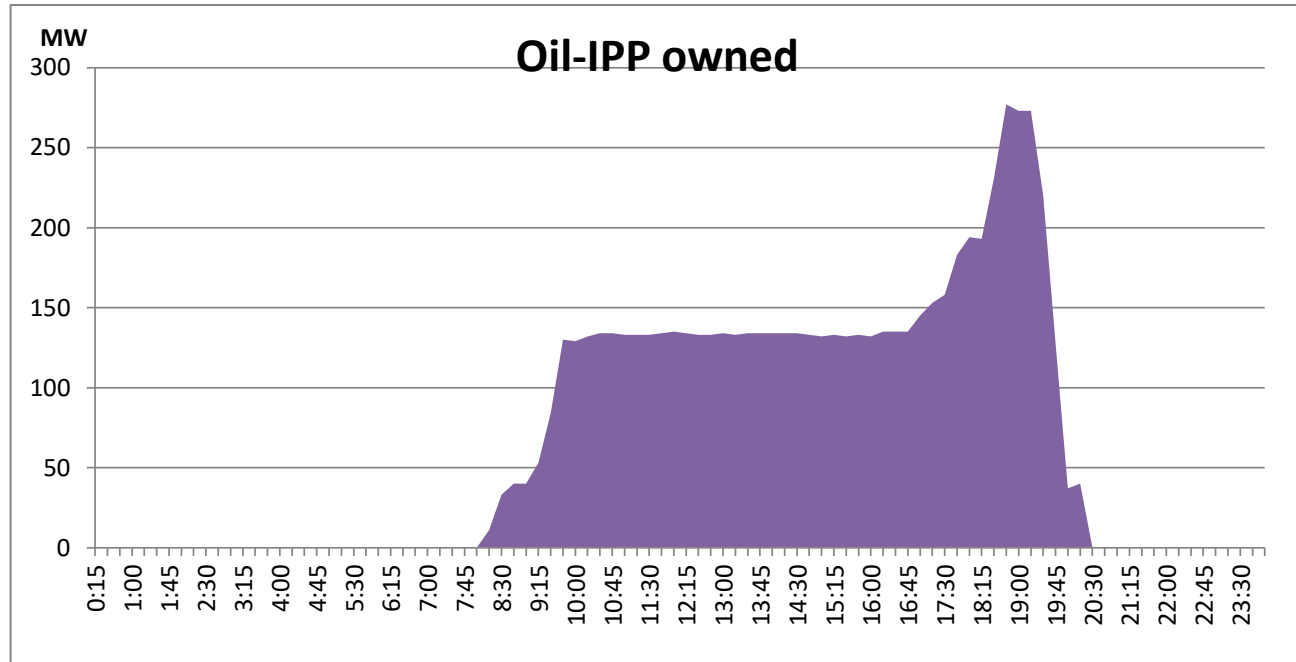
CEB Oil Plant Generation during the Previous day

May 12, 2021



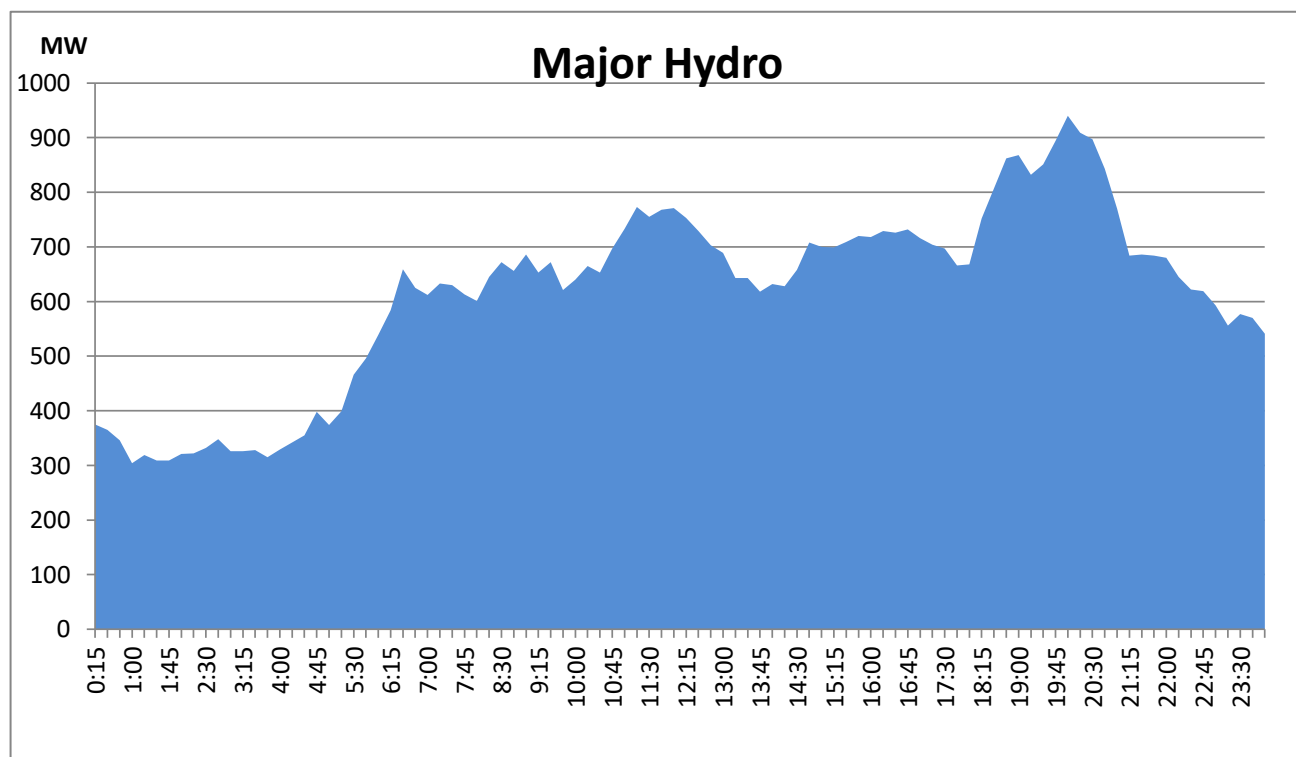
## IPP Oil Plant Generation during the Previous day

May 12, 2021



## Major Hydro Generation during the Previous day

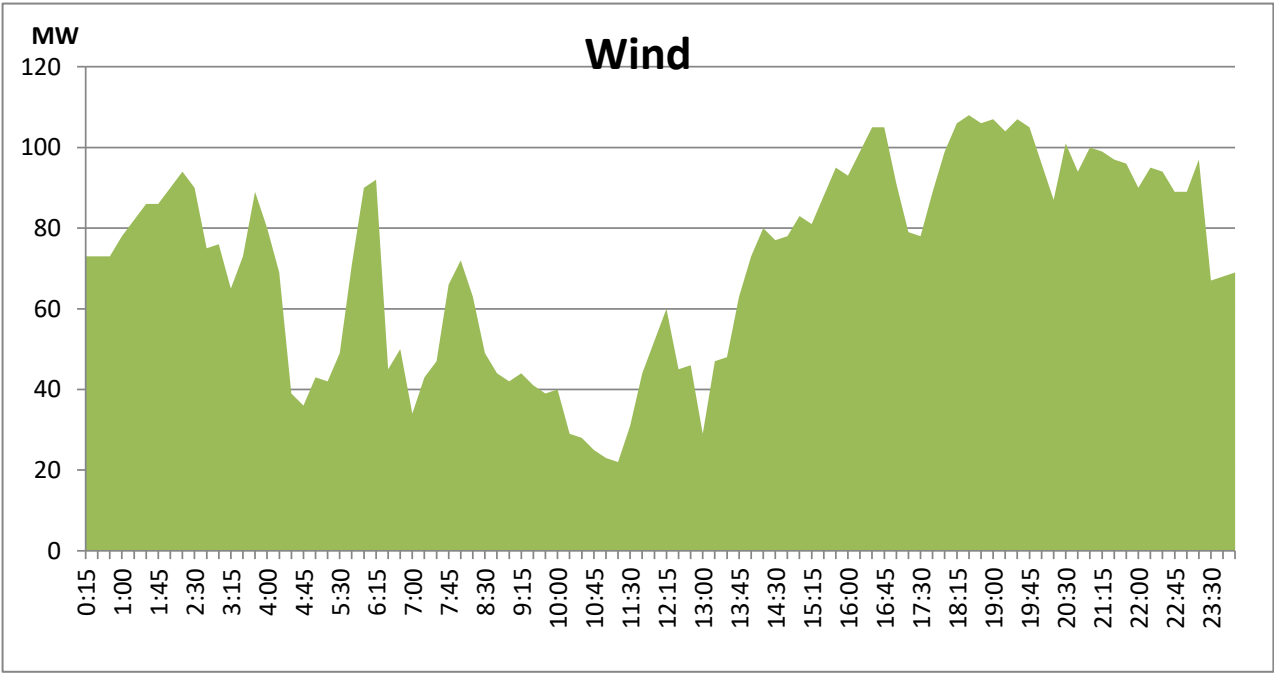
May 12, 2021



Wind Generation during the Previous day

May 12, 2021

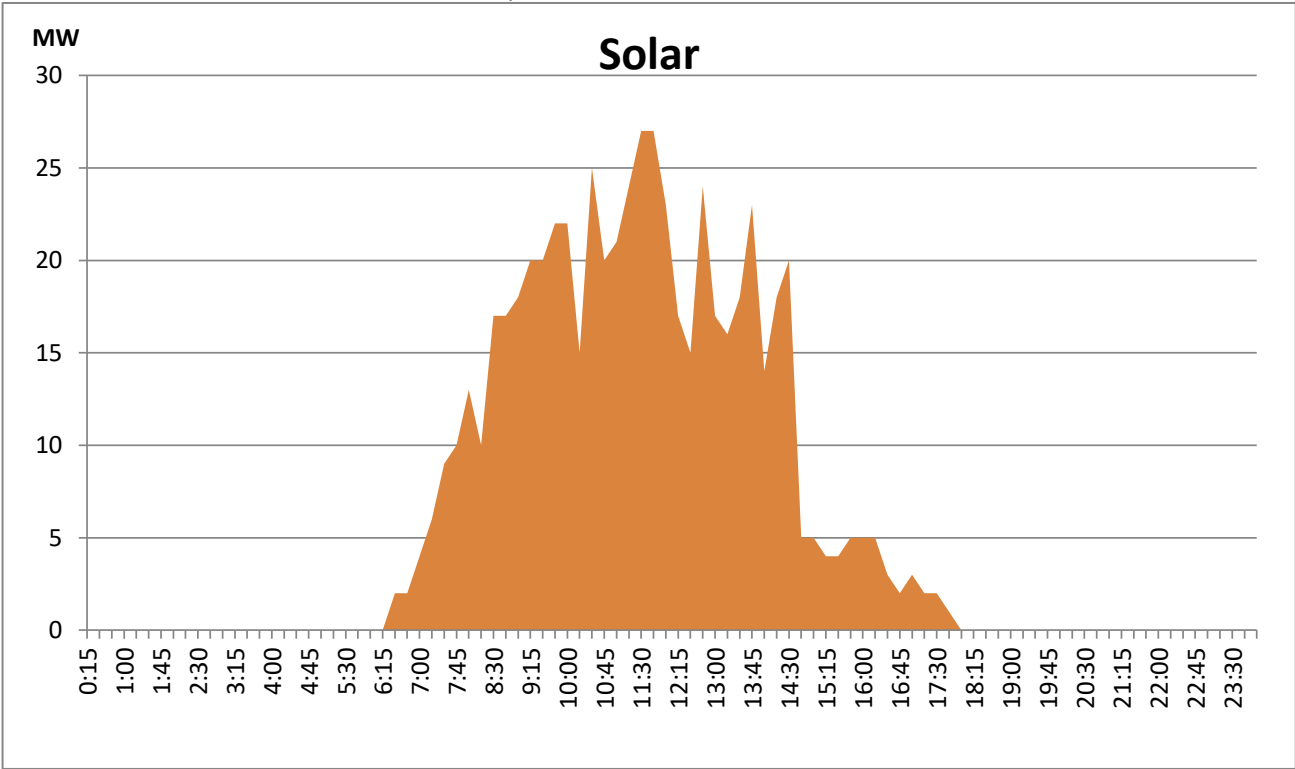
Based on Telemetered Power Stations only



Solar Generation during the Previous day

May 12, 2021

Based on Telemetered Power Stations only



Summary of Major Plant performance

Plant	Installed Capacity	Plant Availability	Night peak Load	Plant Dispatch
	(MW)	(MW)	(MW)	(GWh)
Wimalasurendra	50.00	50.00	10.00	296.00
Old Laxapana	53.80	54.00	50.80	862.00
Canyon	60.00	60.00	10.00	443.00
New Laxapana	116.00	100.00	32.00	1,431.00
Polpitiya	75.00	90.00	87.70	1,401.00
Kotmale	201.00	201.00	133.00	970.00
Victoria	210.00	154.00	154.00	2,398.00
Randenigala	122.00	104.00	52.00	305.00
Rantambe	49.00	50.00	41.00	325.00
Ukuwela	37.00	36.00	36.00	376.00
Bowatenna	40.00	38.00	38.00	107.00
Upper Kotmale	150.00	150.00	150.00	1,779.00
Nilambe	3.20	3.20	3.20	66.00
Samanalawewa	120.00	120.00	124.00	2,796.00
Kukule	75.00	75.00	77.30	1,812.00
Inginiyagala	11.25	11.25	6.10	131.00
Udawalawe	6.00	4.00	3.00	75.00
Puttalam Coal I	275.00	270.00	263.00	5,936.00
Puttalam Coal II	275.00	270.00	269.00	6,073.00
Puttalam Coal III	275.00	270.00	269.00	6,103.00
KPS Small GTs	65.20	48.00	-	-
KPS GT 7	113.00	115.00	-	-
KCCP	161.00	150.00	-	-
Sapugaskanda A	69.60	64.00	67.00	1,177.00
Sapugaskanda B	69.60	63.00	63.00	1,118.00
Uthura Janani	26.01	16.00	23.50	276.00
Barge CEB	60.00	45.00	45.00	757.00
CEB-Thulhiriya	10.00	6.40	-	-
CEB-Kolonnawa	20.00	12.80	-	-
CEB-Mathugama	20.00	14.20	-	-
ACE Matara	20.00	-	-	-
Asia Power	50.80	-	-	-
AES - Kelanitissa	163.00	163.00	-	-
Westcoast	270.00	270.00	-	-
ACE Embilipitiya	100.00	-	-	-
Vpower-Pallekele	24.00	-	-	-
Vpower-Galle	10.00	-	-	-
Vpower-Hamba.	24.00	-	-	-
Vpower-Horana	24.00	-	-	-
Altaaqa-Mahiya.	10.00	-	-	-
Vpower-Valach.	24.00	24.00	24.00	33.00
Solar	58.00		-	232.00
Wind	128.00		17.70	1,453.00
MH and BM	394.00		147.60	Not available
Total without NCRE	3,538.46	3,101.85		

Night peak load of MH and BM only include loading of Minihydro plants of total capacity MW 185

Installed capacity of Solar, wind, Mini-hydro and Biomass plants are as of end of December 2019

Plant availability is the availability recorded at 6 am on

May 14, 2021

## Thermal Plant Fuel types

Power Station	Primary Fuel
CEB Thermal	
Sapugaskanda 1	Heavy Fuel
Sapugaskanda 2	Heavy Fuel
Kelanitissa Small Gas Turbines	Auto Diesel
GT 7 - Kelanitissa	Auto Diesel
Kelanitissa CCY	Naptha & Diesel
Lakvijaya 1	Coal
Lakvijaya 2	Coal
Lakvijaya 3	Coal
Uthuru Janani	Heavy Fuel
Barge CEB	Furnace Oil

Power Station	Primary Fuel
Private Thermal	
Asia Power	Heavy Fuel
Sojitz -	Auto Diesel
West Coast	Low Sulphur Furnace oil
ACE Embilipitiya	Furnace Oil

## Major Incidents during the day -as reported by CEB morning of

**May 14, 2021**

- 1) Kuku-Mathu both ccts tripped from kuku end and A/R from Mathu end at 13:05 hrs causing both Kuku m/cs to be tripped. Kuku-Mathu ccts restored at 13:25 hrs and Kuku PS resumed generation at 13:38 hrs.
- 2) O/Lax stage 1 all m/cs tripped at 15:11 hrs and resumed generation at 16:42 hrs.
- 3) Putt 132/33kV T/F 03 tripped at 15:30 hrs due to O/C and energized at 15:36 hrs.
- 4) Polp -Malib cct tripped and A/R at 0:03 hrs (14/05/2021).
- 5) Biya 220/132 kV T/F 02 tripped at 5:03 hrs(14/05/2021) due to operation of OLTC buchholz relay and yet to be energized.
- 6) Balan T/F 02 tripped at 5:24 hrs(14/05/2021) due to operation of pressure relief valve and yet to be energized.
- 7) Kuku,Norton and Lax ponds spilling started at 8:00 hrs, 2:47 hrs(14/05/2021) and 3:41hrs(14/05/2021) and continues to present hour.