

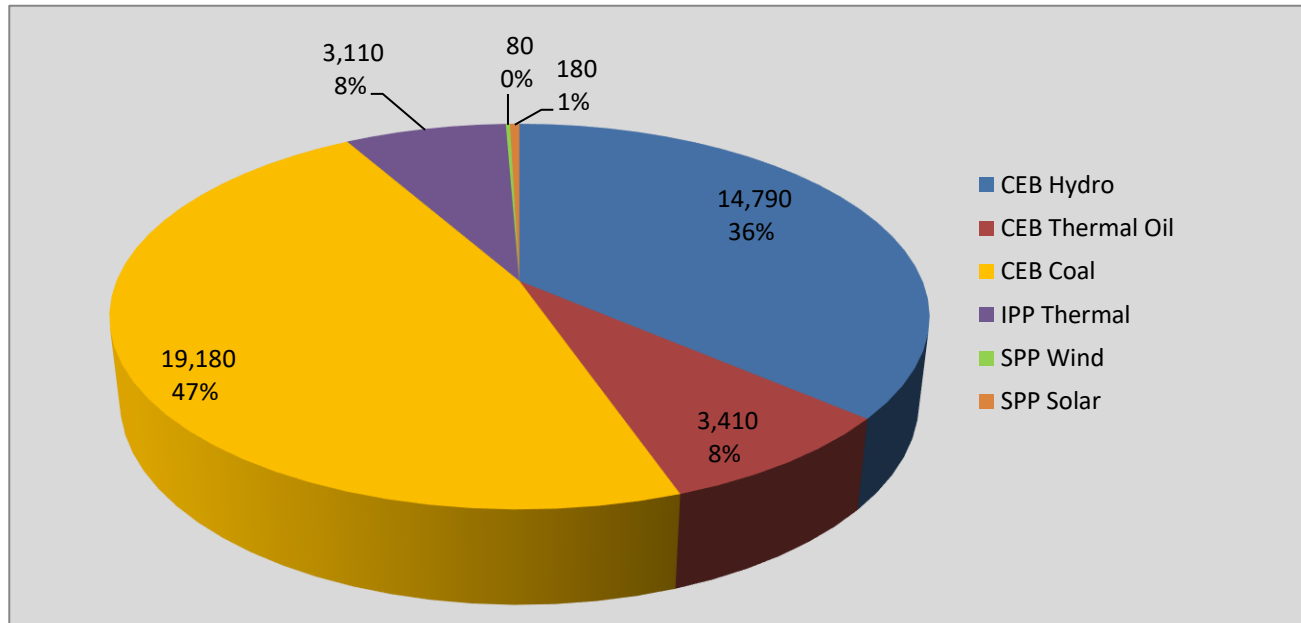
# **Generation and Reservoirs Statistics**

**May 10, 2021**



**PUBLIC UTILITIES COMMISSION OF SRI LANKA**

## Daily Generation Mix in MWh



**Total Generation** **41,000 MWh**

Note: Generation from other SPPs (Mini Hydro and Biomass) is not included

## Cumulative Dispatch

Note: Generation from other SPPs (Mini Hydro, small scale Solar and Biomass) is not included

### For Current Month

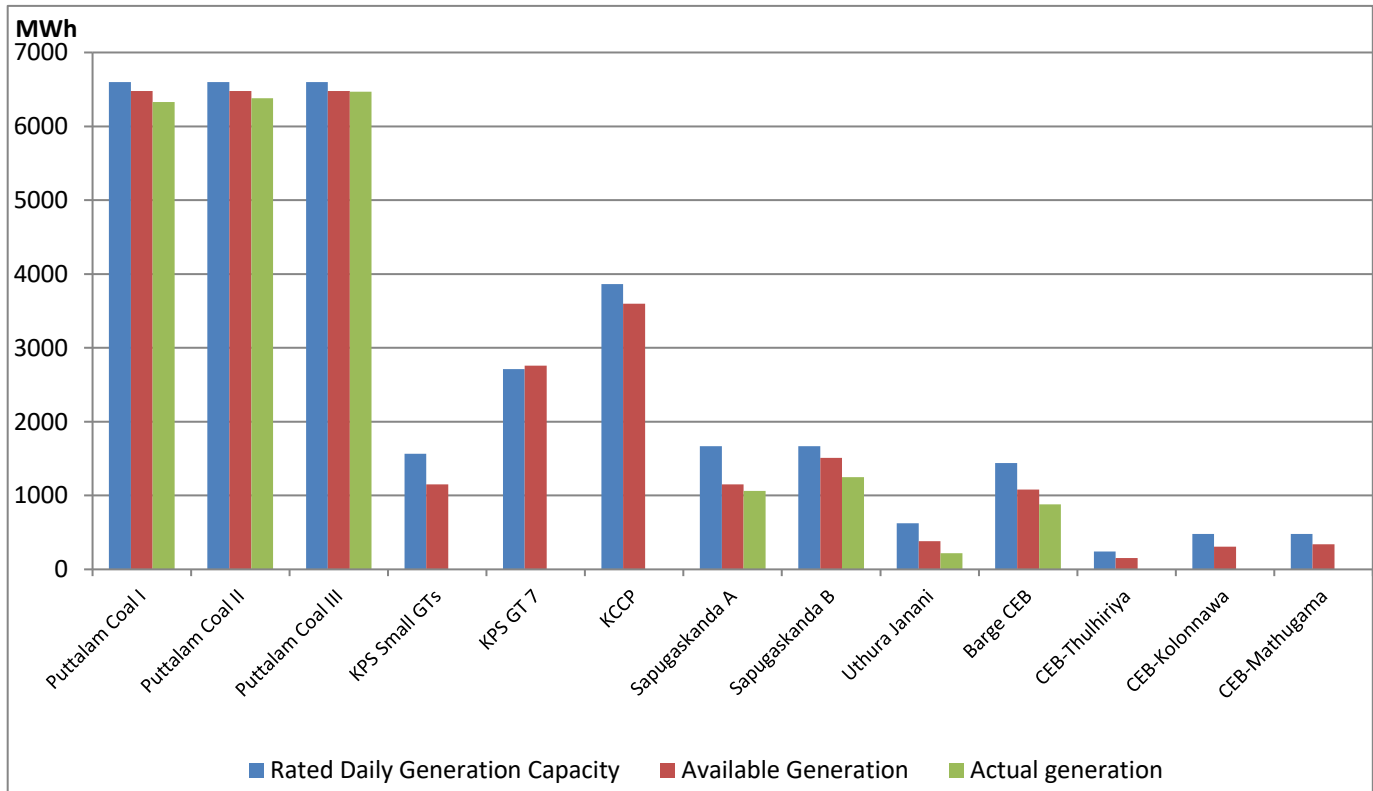
Category	Dispatch (GWh)	Percentage
CEB Hydro	134.6	33.92%
CEB Thermal Oil	50.4	12.70%
CEB Coal	186.5	46.99%
IPP Thermal	20.9	5.27%
SPP Wind	1.0	0.24%
SPP Solar	2.4	0.60%
<b>Total</b>	<b>396.8</b>	

### For Current Year

Category	Dispatch (GWh)	Percentage
CEB Hydro	1,148.4	21.44%
CEB Thermal Oil	659.0	12.30%
CEB Coal	2,451.0	45.76%
IPP Thermal	1,017.9	19.00%
SPP Wind	35.0	0.65%
SPP Solar	33.3	0.62%
<b>Total</b>	<b>5,356.1</b>	

# CEB Thermal Plant Dispatch

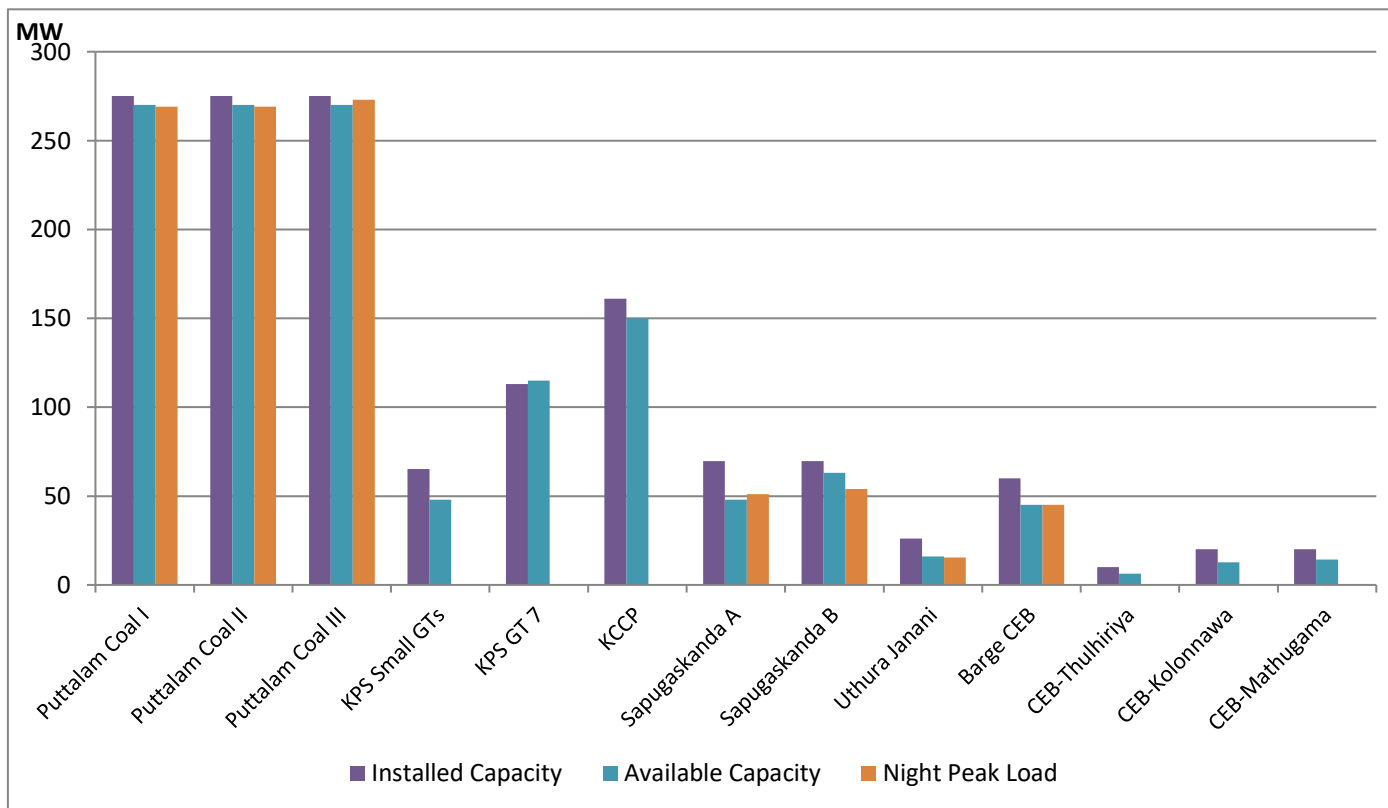
May 10, 2021



Available Generation is estimated based on plant availability at 6.00am on

May 11, 2021

# CEB Thermal Plant Loading at the Night Peak

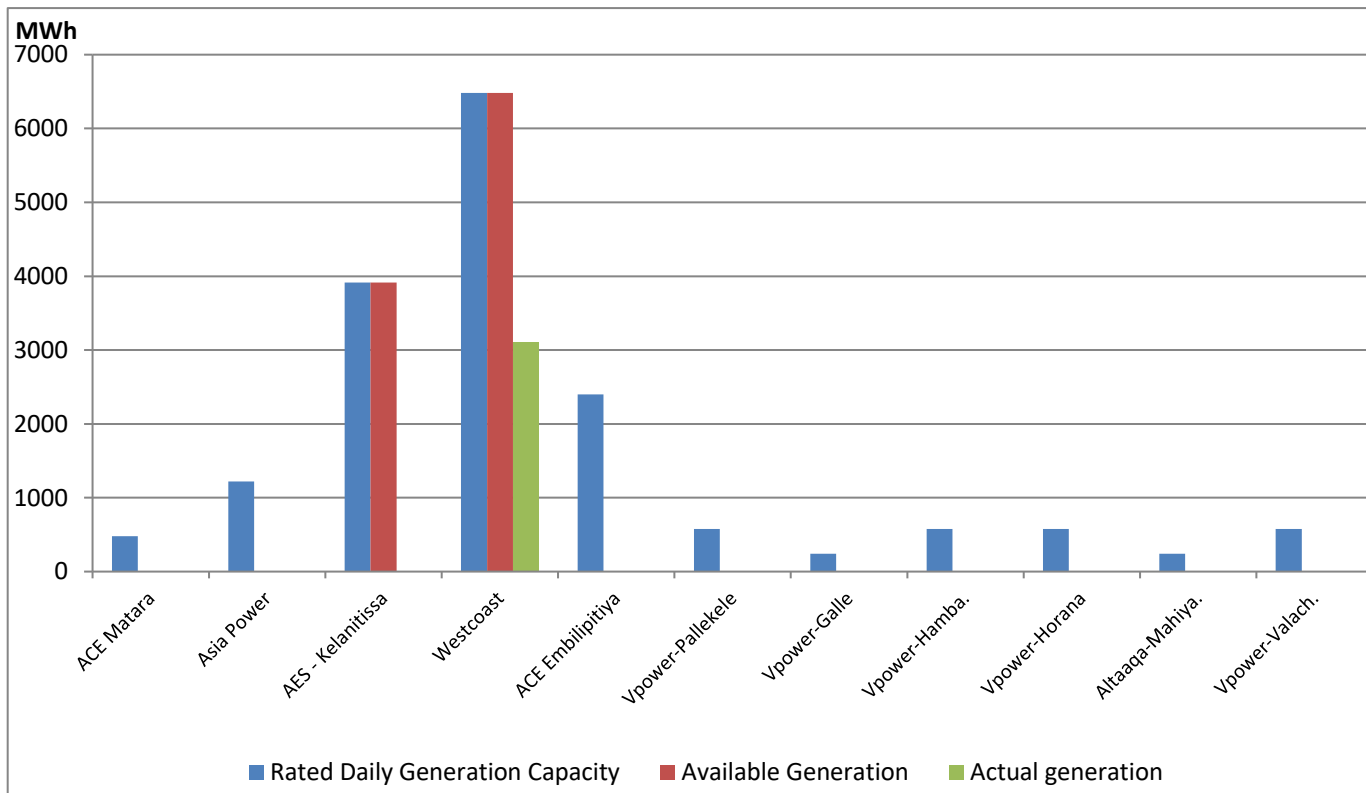


Note- Plant availability is recorded at 6.00 am on May 11, 2021

## IPP Thermal Plant Dispatch

May 10, 2021

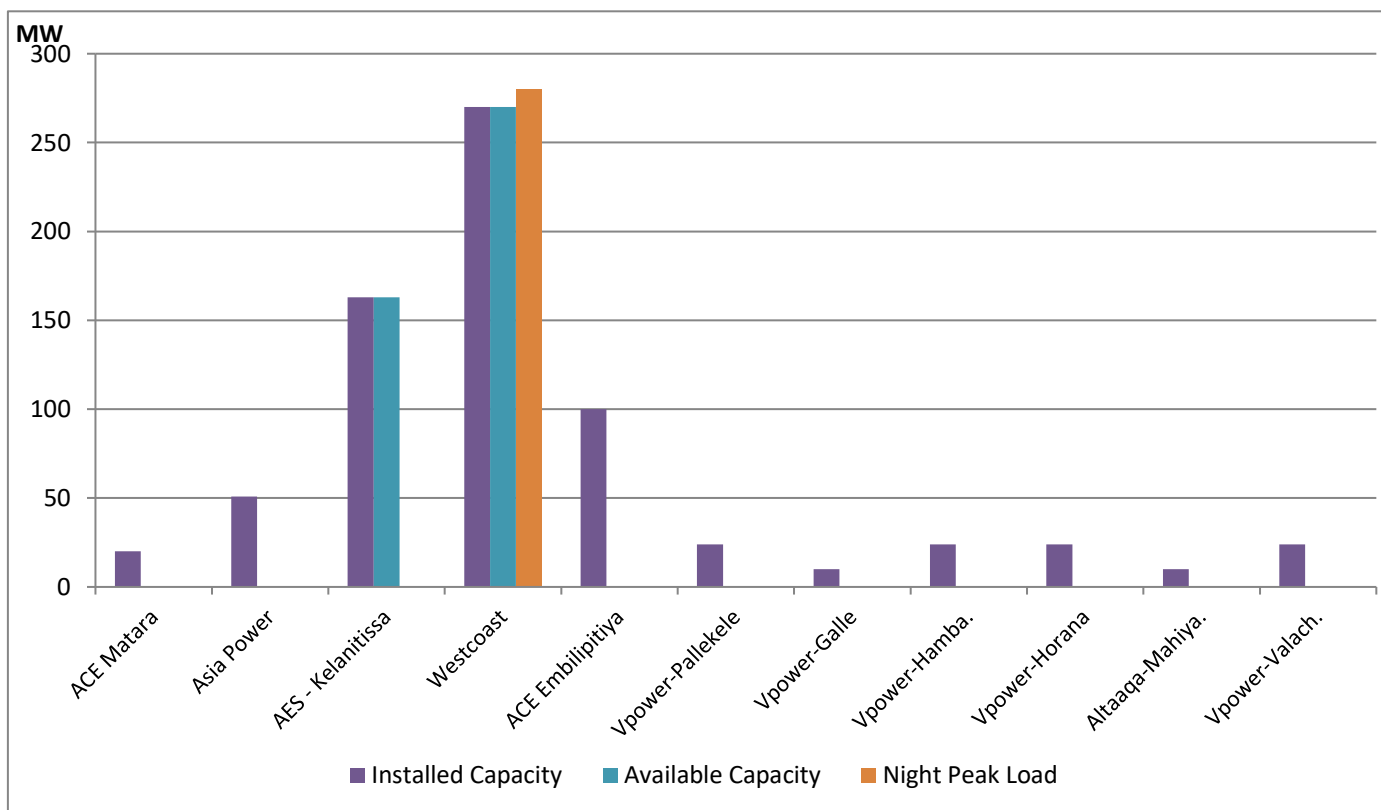
ACE Embilipitiya, ACE Matara, Asia Power, V Power Pallekale, Vpower Galle, V Power Horana, Vpower Hambantota and Altaqa Mahiyangana are not available due to expiration of PPAs



Available Generation is estimated based on plant availability at 6.00am on

May 11, 2021

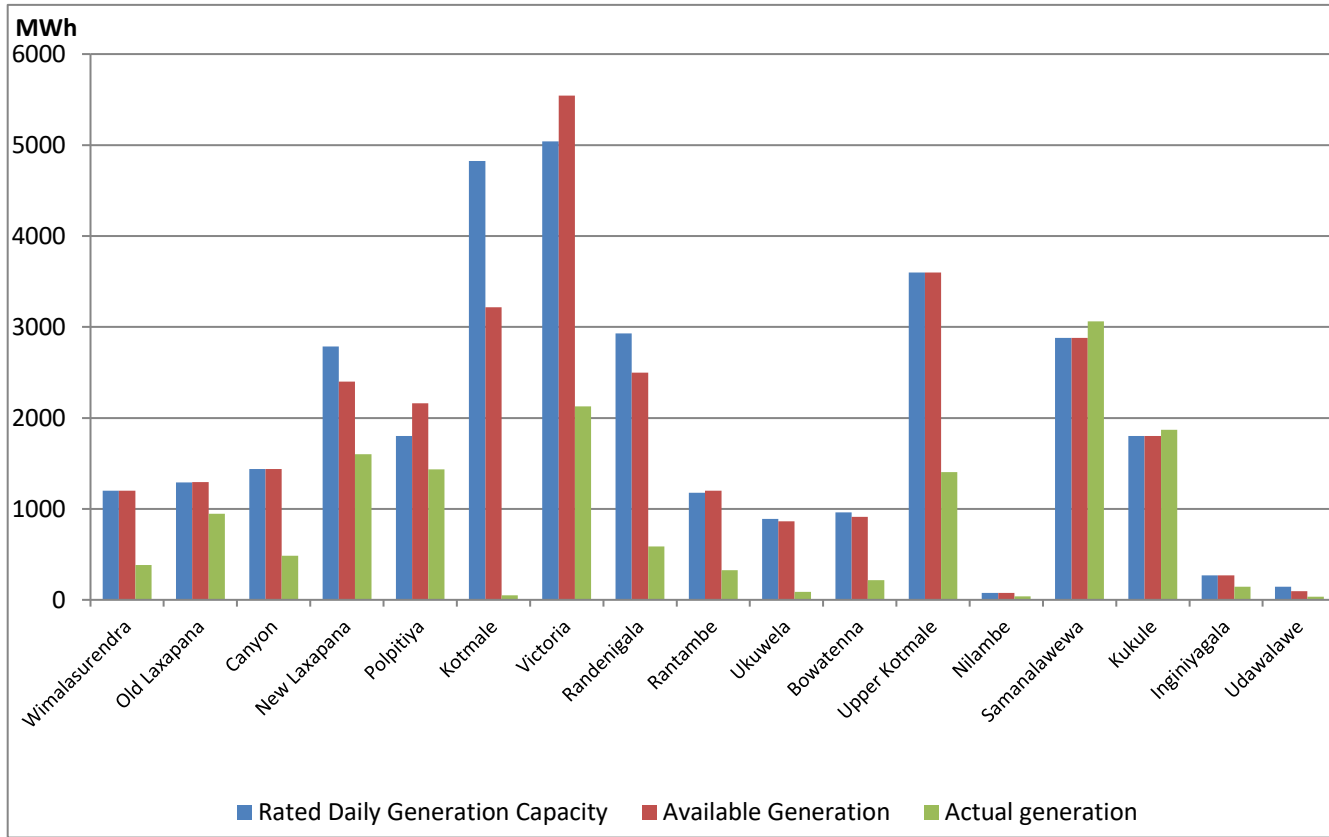
## IPP Thermal Plant Loading at the Night Peak



Note- Plant availability is recorded at 6.00 am on May 11, 2021

## Major Hydro Plant Dispatch

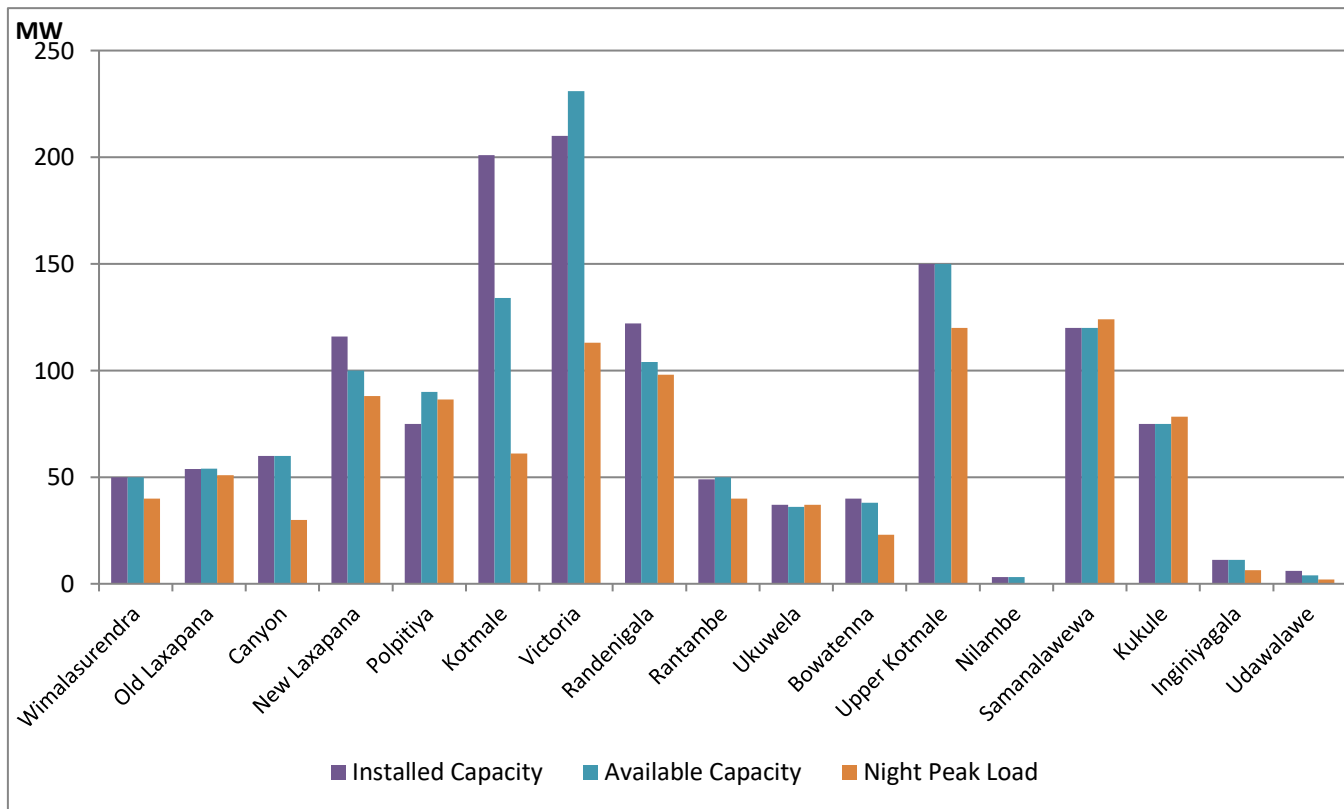
May 10, 2021



Note- Available Generation is estimated based on plant availability at 6.00am on May 11, 2021

## Major Hydro Plant Loading at Night Peak

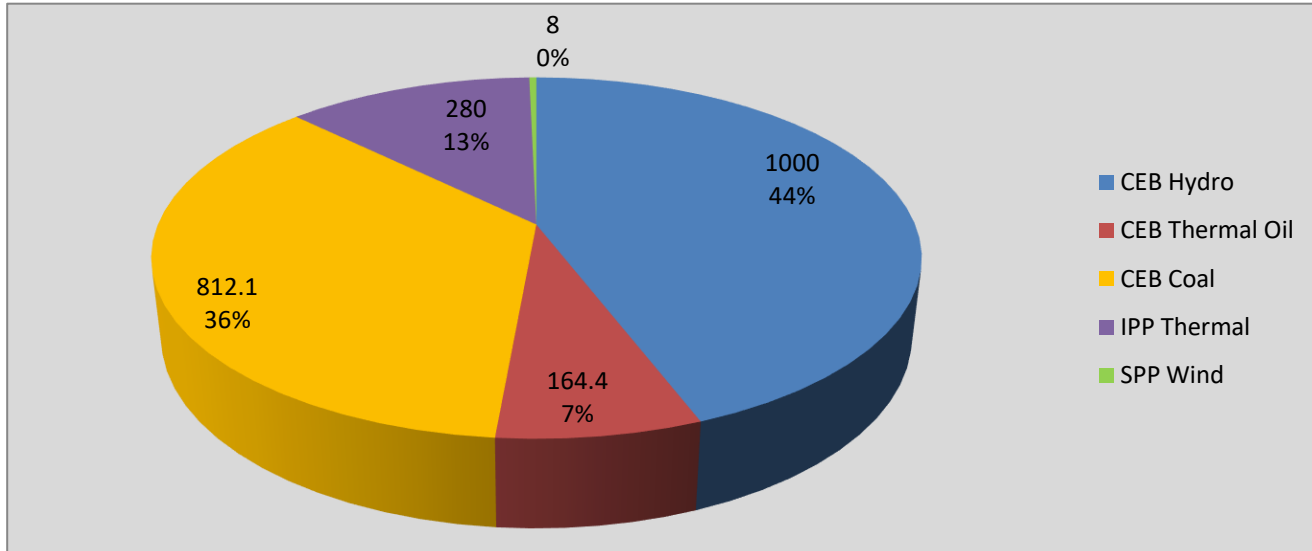
May 10, 2021



Note- Plant availability is recorded at 6.00 am on May 11, 2021

## Contribution to the Night Peak in MW

May 10, 2021



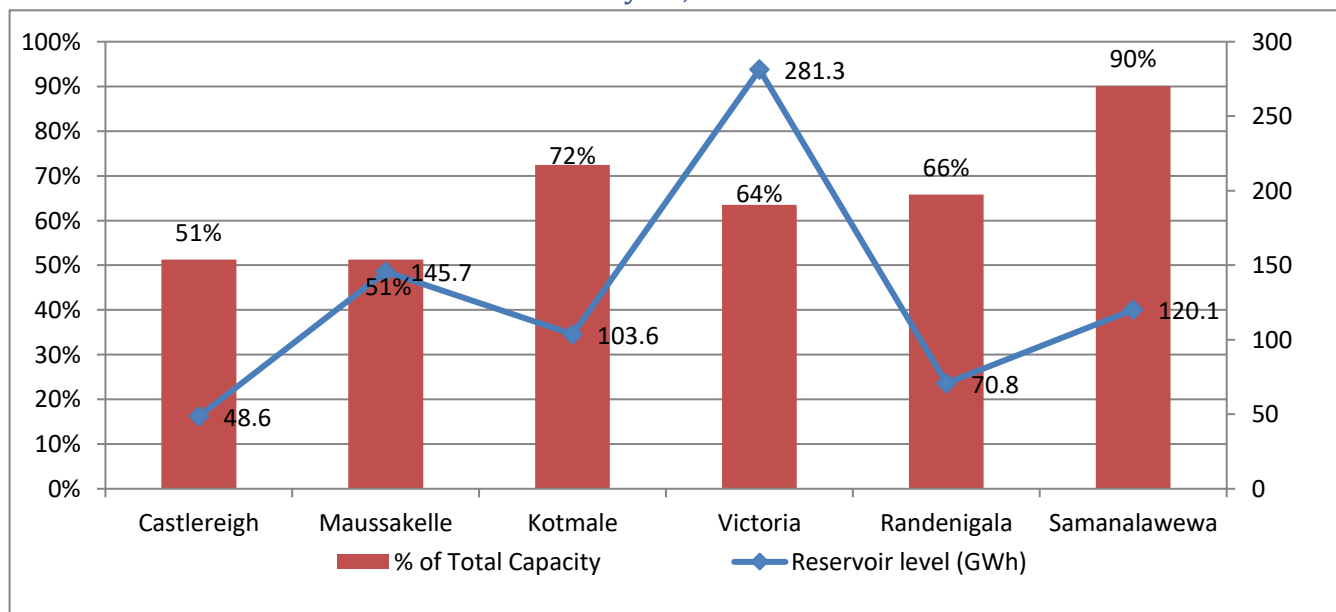
Night Peak*	2,266.5 MW
Day Peak	2,071.3 MW
Minimum Demand	1,225.5 MW

Notes: \*The above chart pattern and night peak figure is presented excluding the contribution of Moragahakanda, other minihydro and biomass power plants

\*\*Day peak and Minimum demand includes the contribution from Moragahakanda, wind and solar plants

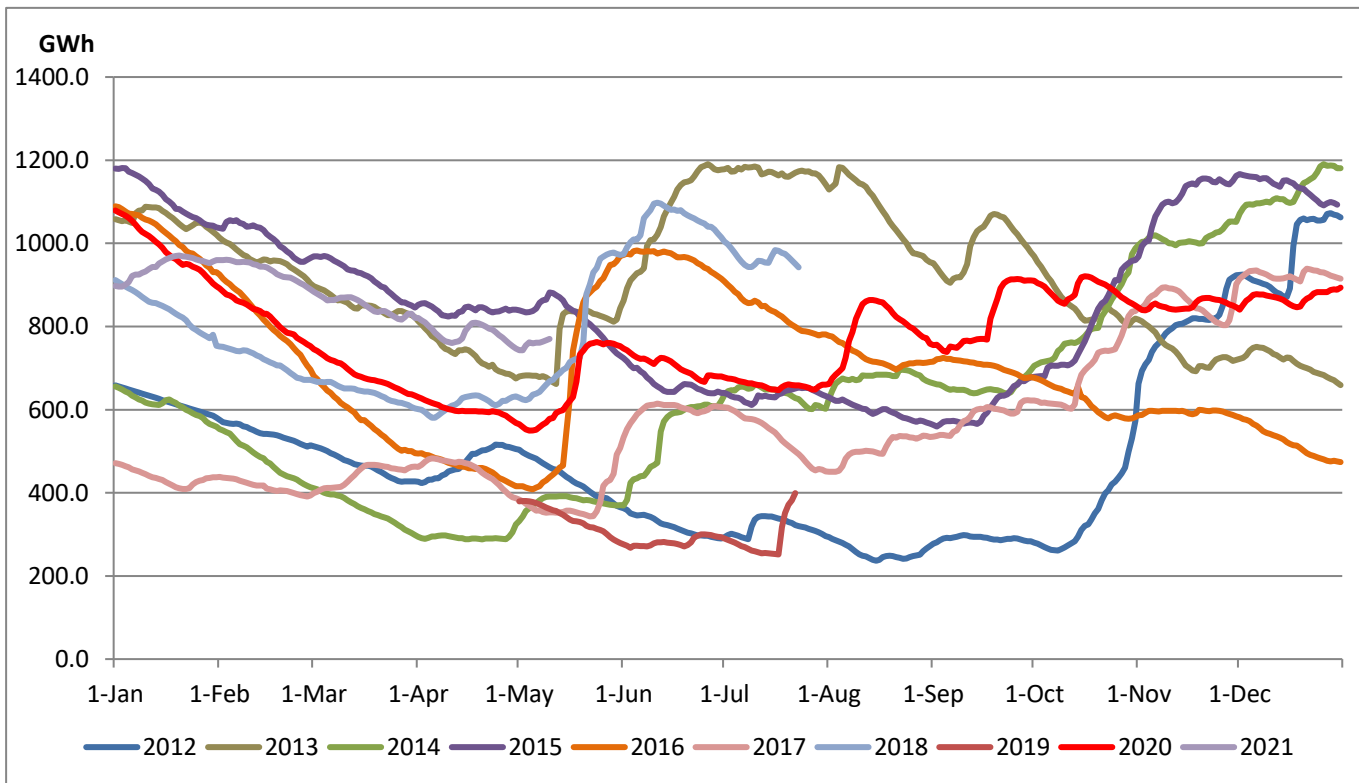
\* in addition to the night peak figure presented above, Moragahakanda plant, other MiniHydro and Biomass Plants of installed capacity 176.00 MW has recorded total 134.10 MW at night peak

## Reservoir Levels - as at 06.00 Hr on May 11, 2021



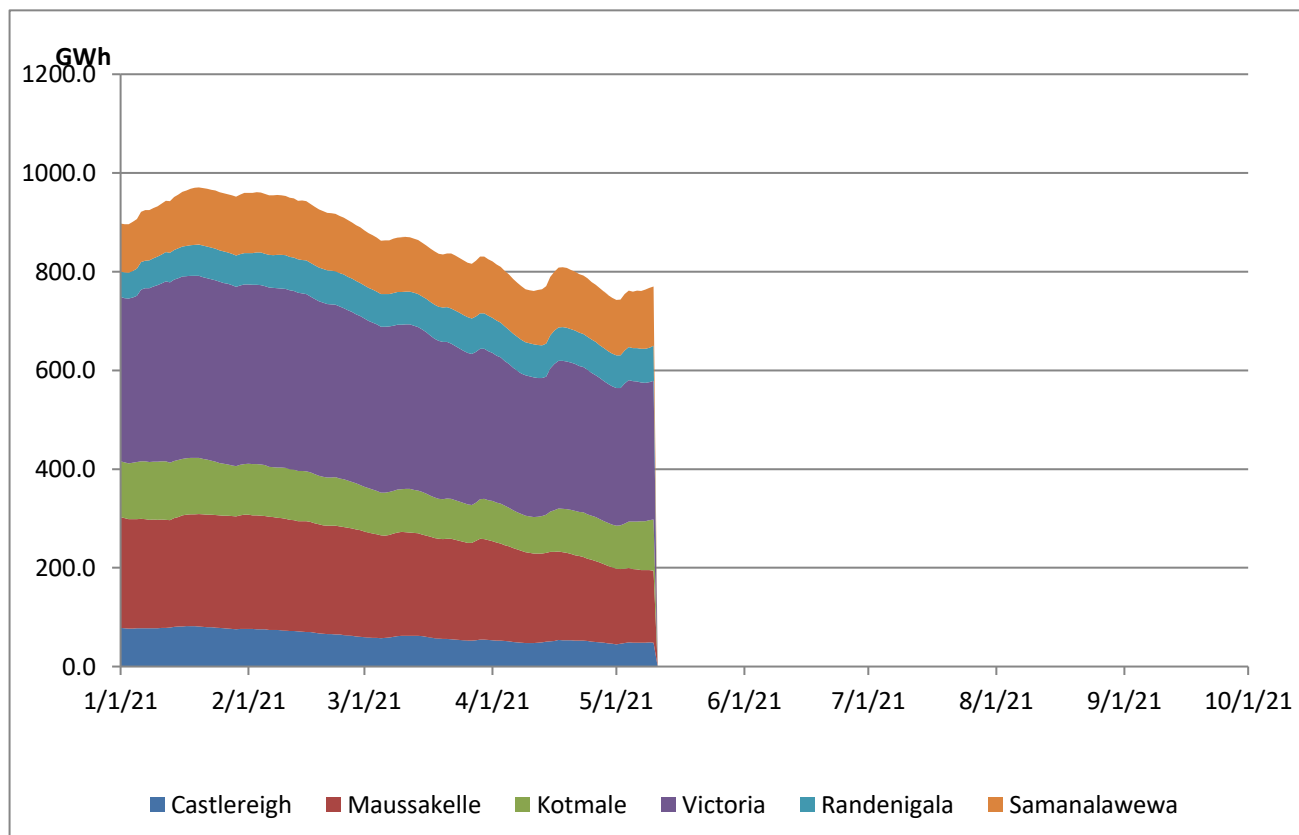
Total Reservoir Level(GWh)	770.1
% of Total capacity	63.9%

## Comparison of Total Reservoir Storage Levels with Past Years

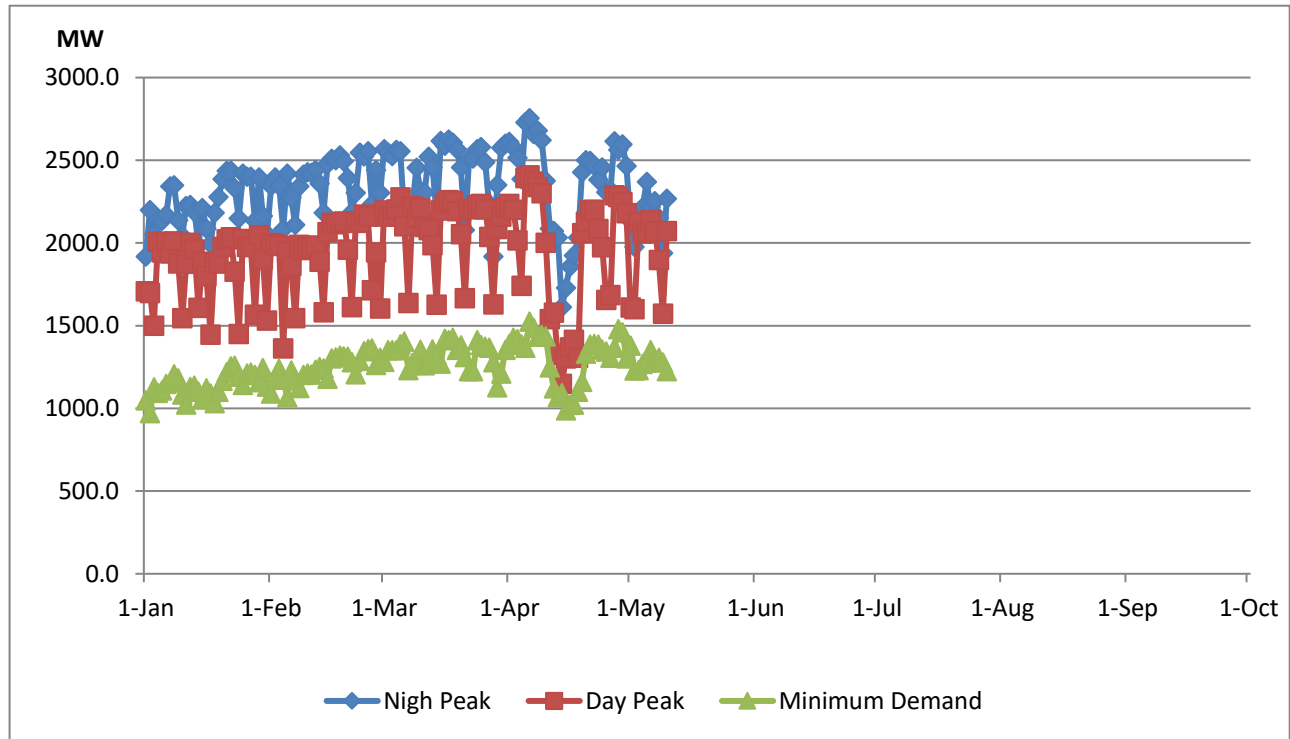


Data for 2018 and 2019 are only available for part of year.

## Variation of Major Hydro Reservoir Levels in the current year (GWh)



## Variation of Demand during the current year



### Notes:

The night peak is excluding the contribution from Mini hydro and biomass power plants

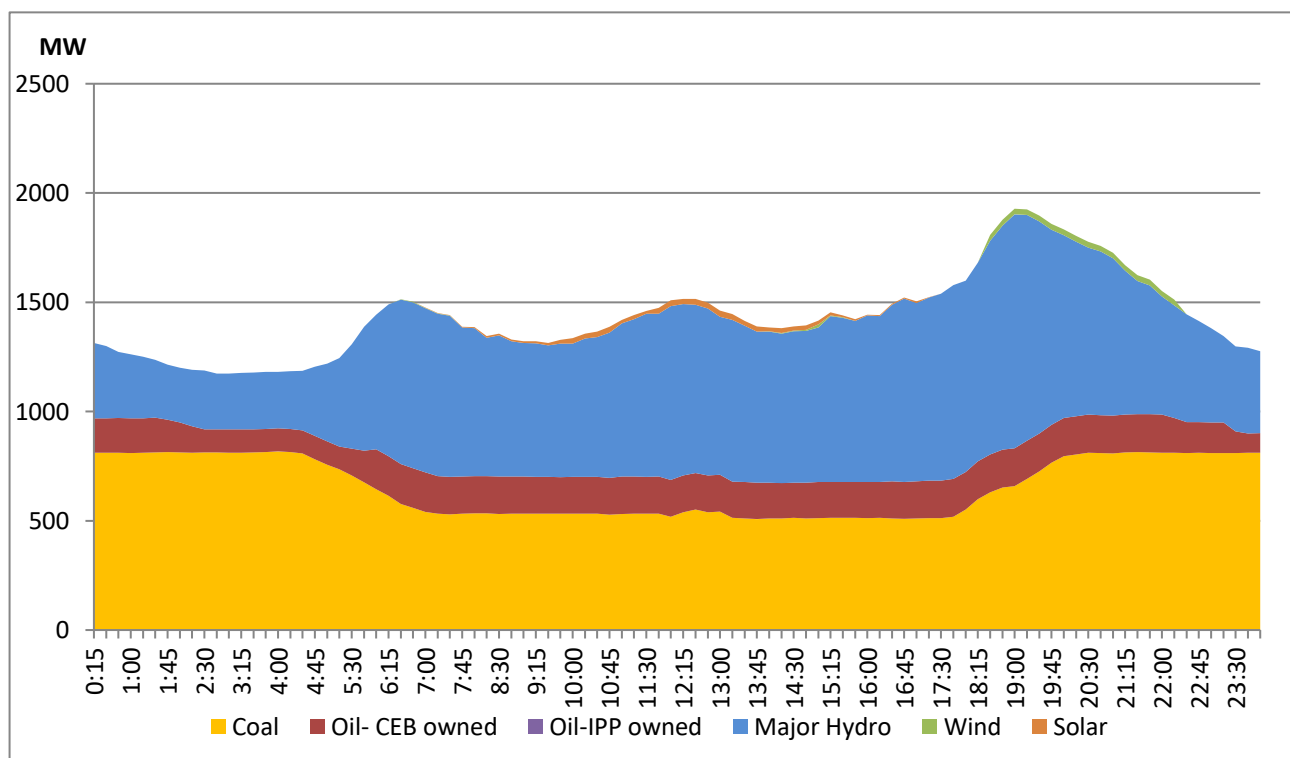
Day peak and minimum demand graphs includes the contribution from Moragahakanda power plant

All graphs include the contribution from telemetered solar and wind plants

## Daily Load Curve of the Previous day

May 9, 2021

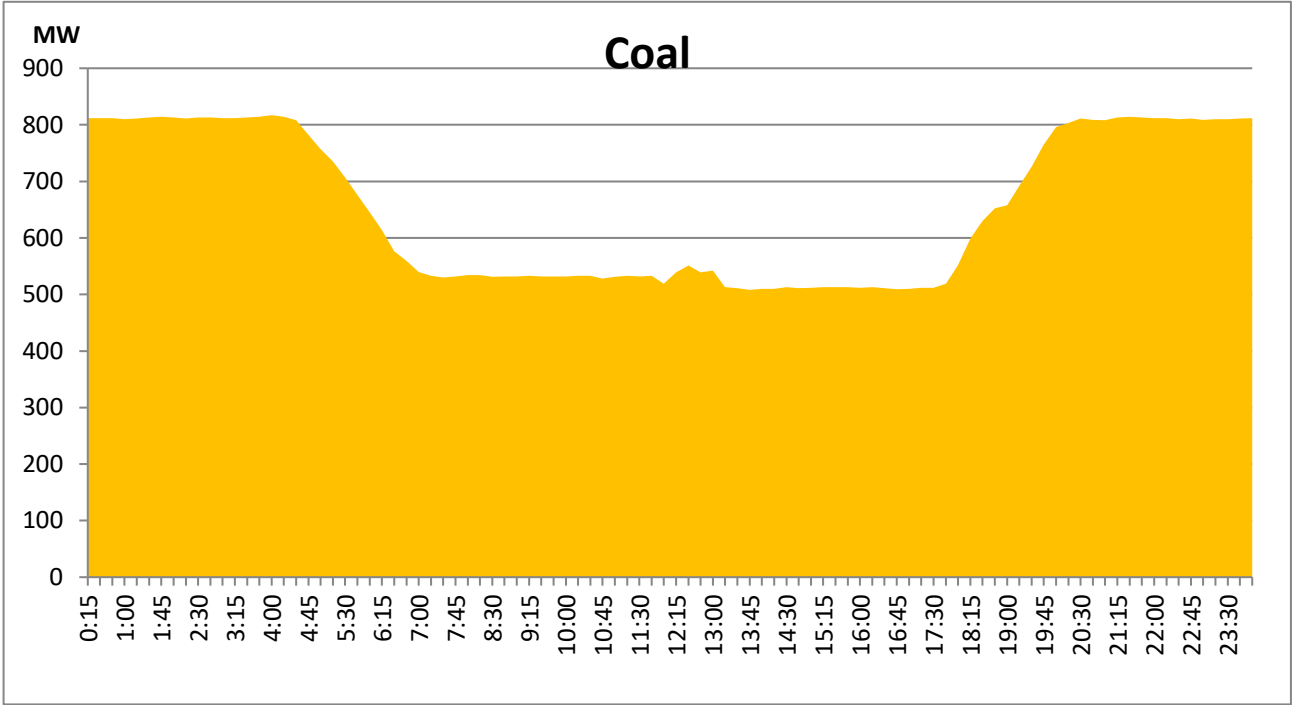
Solar and wind data is based on Telemetered Power Stations only





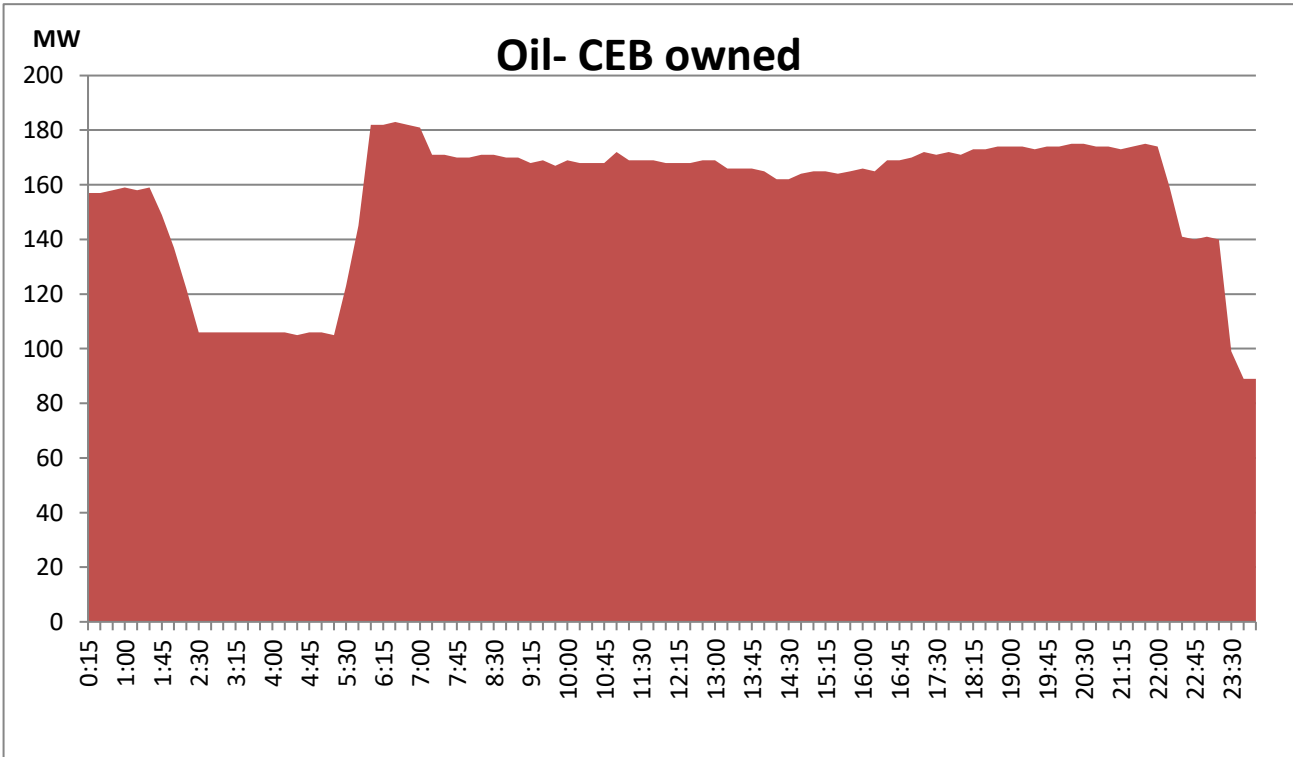
**Coal Generation during the Previous day**

**May 9, 2021**



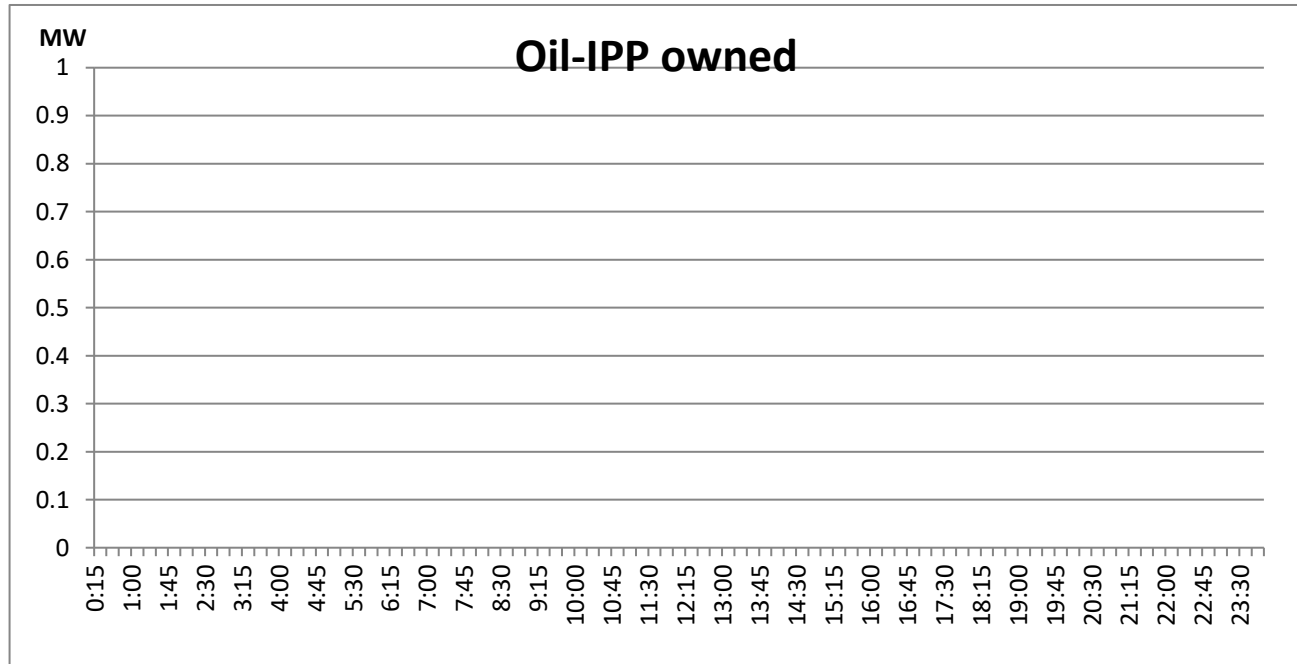
**CEB Oil Plant Generation during the Previous day**

**May 9, 2021**



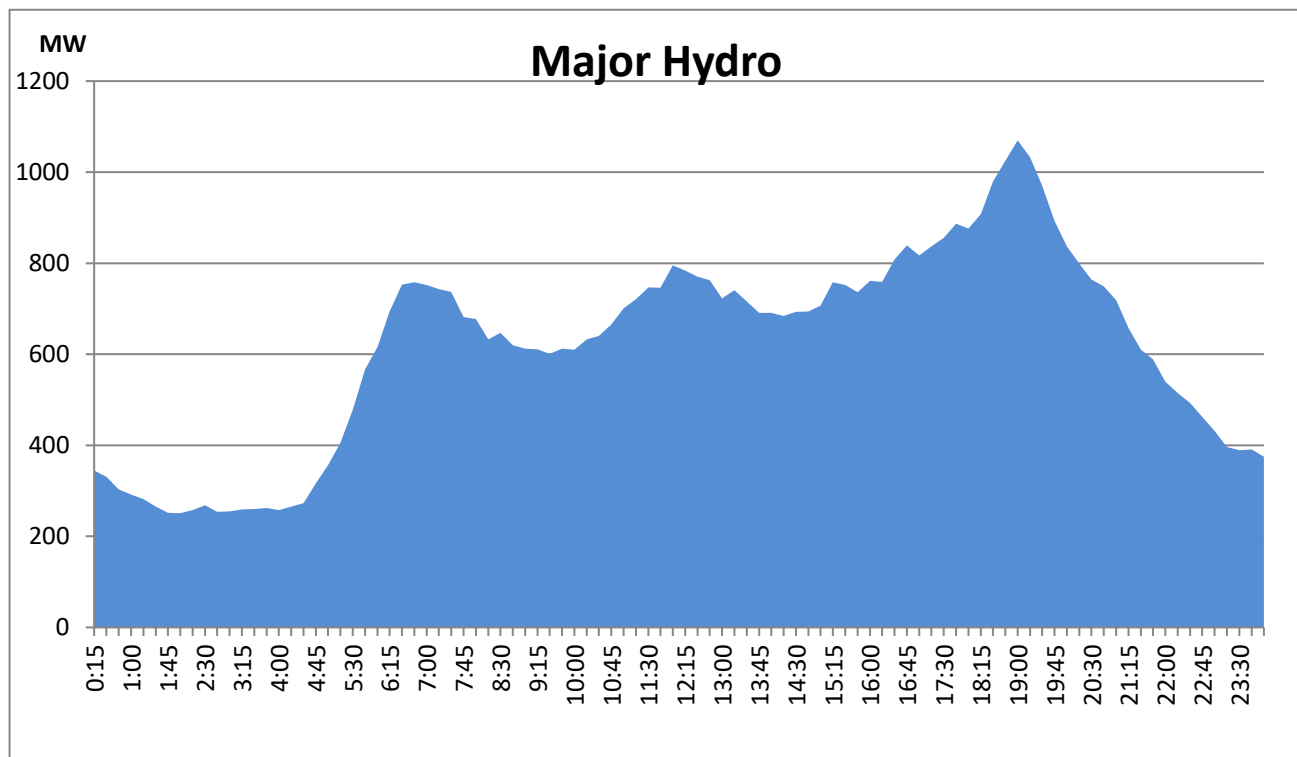
**IPP Oil Plant Generation during the Previous day**

**May 9, 2021**



**Major Hydro Generation during the Previous day**

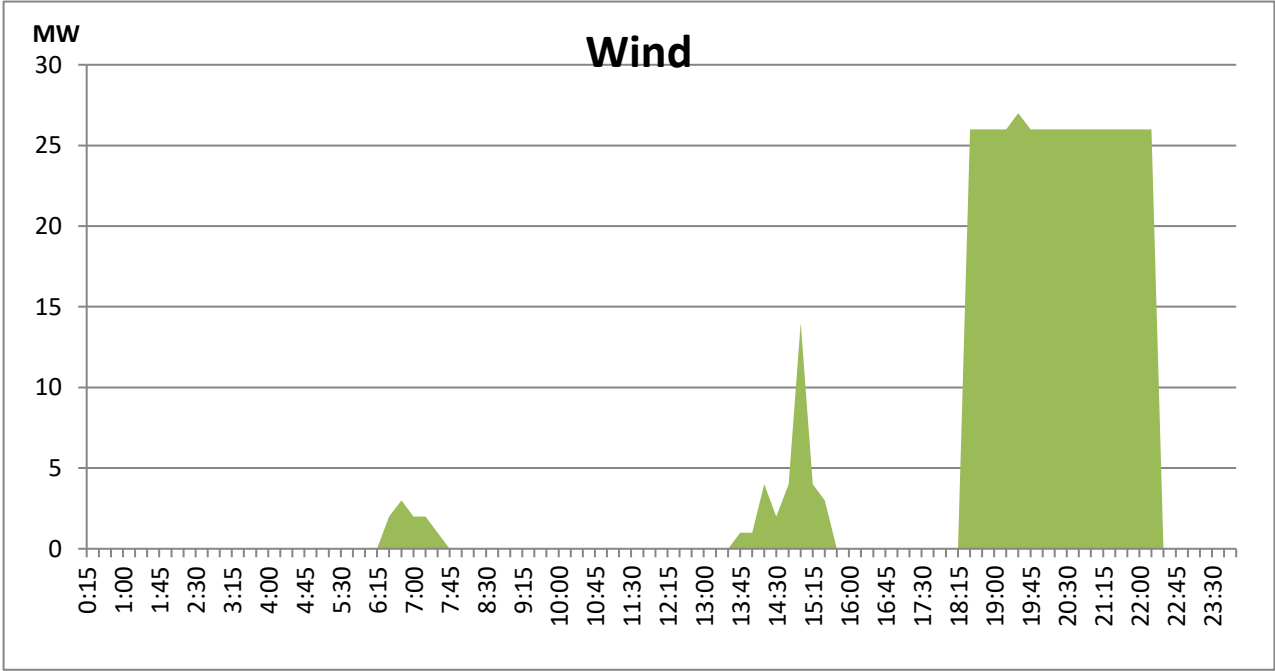
**May 9, 2021**



# Wind Generation during the Previous day

May 9, 2021

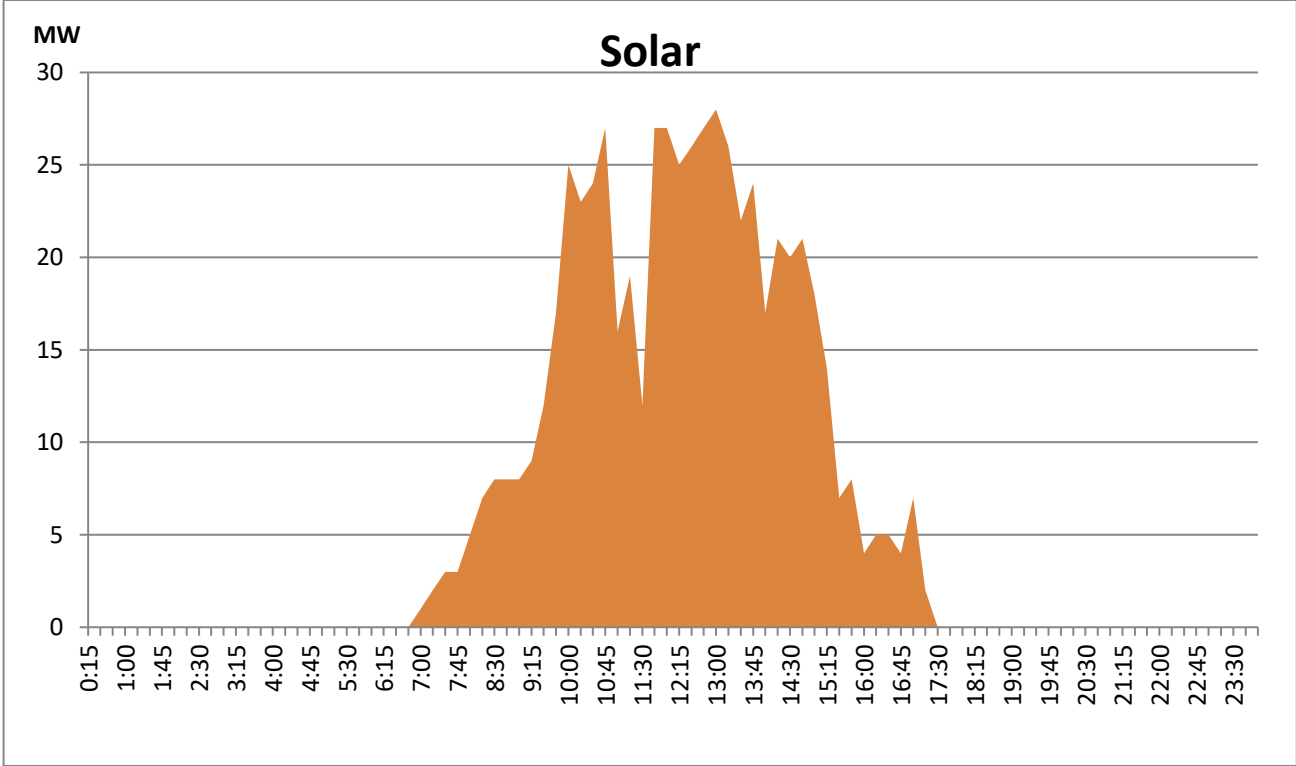
Based on Telemetered Power Stations only



# Solar Generation during the Previous day

May 9, 2021

Based on Telemetered Power Stations only



Summary of Major Plant performance

Plant	Installed Capacity (MW)	Plant Availability (MW)	Night peak Load (MW)	Plant Dispatch (GWh)
Wimalasurendra	50.00	50.00	40.00	381.00
Old Laxapana	53.80	54.00	50.90	947.00
Canyon	60.00	60.00	30.00	484.00
New Laxapana	116.00	100.00	88.00	1,602.00
Polpitiya	75.00	90.00	86.40	1,434.00
Kotmale	201.00	134.00	61.00	50.00
Victoria	210.00	231.00	113.00	2,127.00
Randenigala	122.00	104.00	98.00	587.00
Rantambe	49.00	50.00	40.00	325.00
Ukuwela	37.00	36.00	37.00	86.00
Bowatenna	40.00	38.00	23.00	216.00
Upper Kotmale	150.00	150.00	120.00	1,404.00
Nilambe	3.20	3.20	-	39.00
Samanalawewa	120.00	120.00	124.00	3,063.00
Kukule	75.00	75.00	78.30	1,869.00
Inginiyagala	11.25	11.25	6.30	145.00
Udawalawe	6.00	4.00	2.00	36.00
Puttalam Coal I	275.00	270.00	269.00	6,331.00
Puttalam Coal II	275.00	270.00	269.00	6,378.00
Puttalam Coal III	275.00	270.00	273.00	6,468.00
KPS Small GTs	65.20	48.00	-	-
KPS GT 7	113.00	115.00	-	-
KCCP	161.00	150.00	-	-
Sapugaskanda A	69.60	48.00	51.00	1,064.00
Sapugaskanda B	69.60	63.00	54.00	1,248.00
Uthura Janani	26.01	16.00	15.50	218.00
Barge CEB	60.00	45.00	45.00	881.00
CEB-Thulhiriya	10.00	6.40	-	-
CEB-Kolonnawa	20.00	12.80	-	-
CEB-Mathugama	20.00	14.20	-	-
ACE Matara	20.00	-	-	-
Asia Power	50.80	-	-	-
AES - Kelanitissa	163.00	163.00	-	-
Westcoast	270.00	270.00	280.00	3,108.00
ACE Embilipitiya	100.00	-	-	-
Vpower-Pallekele	24.00	-	-	-
Vpower-Galle	10.00	-	-	-
Vpower-Hamba.	24.00	-	-	-
Vpower-Horana	24.00	-	-	-
Altaaqa-Mahiya.	10.00	-	-	-
Vpower-Valach.	24.00	-	-	-
Solar	58.00		-	181.00
Wind	128.00		9.90	325.00
MH and BM	394.00		134.10	Not available
Total without NCRE	3,538.46	3,071.85		

Night peak load of MH and BM only include loading of Minihydro plants of total capacity MW 176

Installed capacity of Solar, wind, Mini-hydro and Biomass plants are as of end of December 2019

Plant availability is the availability recorded at 6 am on

May 11, 2021

**Thermal Plant Fuel types**

<b>Power Station</b>	<b>Primary Fuel</b>
<b>CEB Thermal</b>	
<b>Sapugaskanda 1</b>	Heavy Fuel
<b>Sapugaskanda 2</b>	Heavy Fuel
<b>Kelanitissa Small Gas Turbines</b>	Auto Diesel
<b>GT 7 - Kelanitissa</b>	Auto Diesel
<b>Kelanitissa CCY</b>	Naptha & Diesel
<b>Lakvijaya 1</b>	Coal
<b>Lakvijaya 2</b>	Coal
<b>Lakvijaya 3</b>	Coal
<b>Uthuru Janani</b>	Heavy Fuel
<b>Barge CEB</b>	Furnace Oil

<b>Power Station</b>	<b>Primary Fuel</b>
<b>Private Thermal</b>	
<b>Asia Power</b>	Heavy Fuel
<b>Sojitz -</b>	Auto Diesel
<b>West Coast</b>	Low Sulphur Furnace oil
<b>ACE Embilipitiya</b>	Furnace Oil

**Major Incidents during the day -as reported by CEB morning of May 11, 2021**

1 ) All circuit breakers connected to Embilipitiya GSS 132kV B/Bs tripped at 08:26hrs due to the operation of B/B protection causing Emb and Hamb GSS to be dead. Subsequent inspections revealed that the broken earth conductor of ACE Emb cct 01 had got in contact with 132kV B/S 02. Hamb GSS restored by 09:27hrs and Emb GSS 33kV side restored by 11:25hrs through Emb 132 kV B/S 01. Emb GSS 132kV B/S 02 restored by 12:36hrs.

2) Killinochchi -Chunnakam cct 02 tripped at 14:04hrs from both ends due to the operation of distance protection. First attempt to energize the cct failed at 14:17hrs. Killinochchi -Chunnakam cct 02 successfully restored at 17:05hrs

3) Kukule spilling stopped at 05:00hrs on 11.05.2021.