

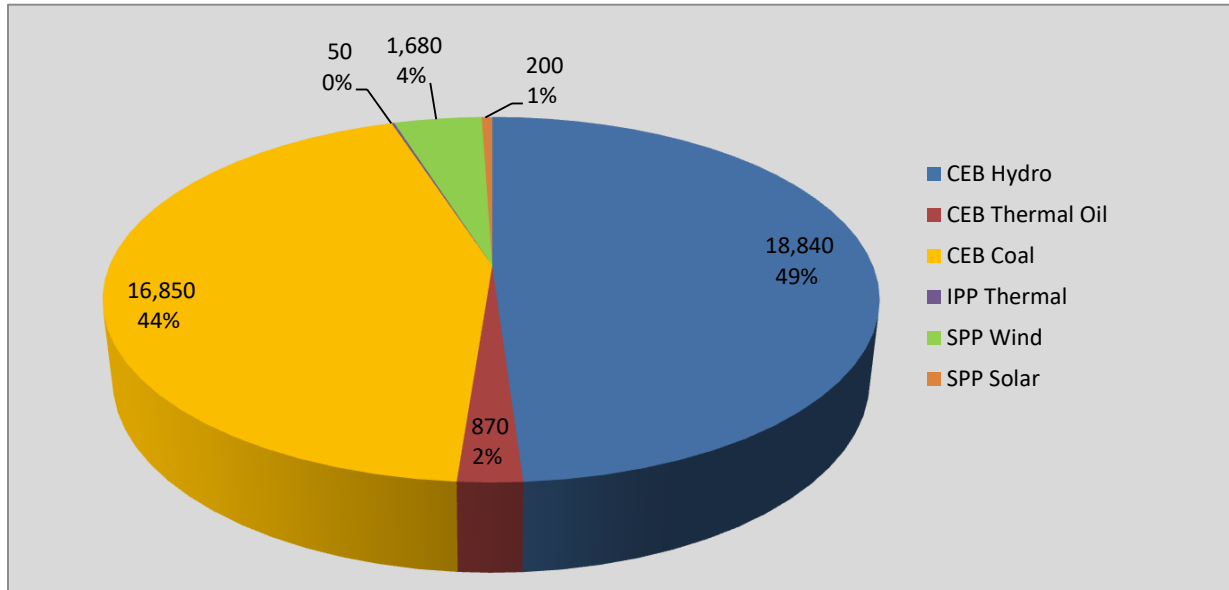
Generation and Reservoirs Statistics

September 21, 2020



PUBLIC UTILITIES COMMISSION OF SRI LANKA

Daily Generation Mix in MWh



Total Generation 38,500 MWh

Note: Generation from other SPPs (Mini Hydro and Biomass) is not included

Cumulative Dispatch

Note: Generation from other SPPs (Mini Hydro, small scale Solar and Biomass) is not included

For Current Month

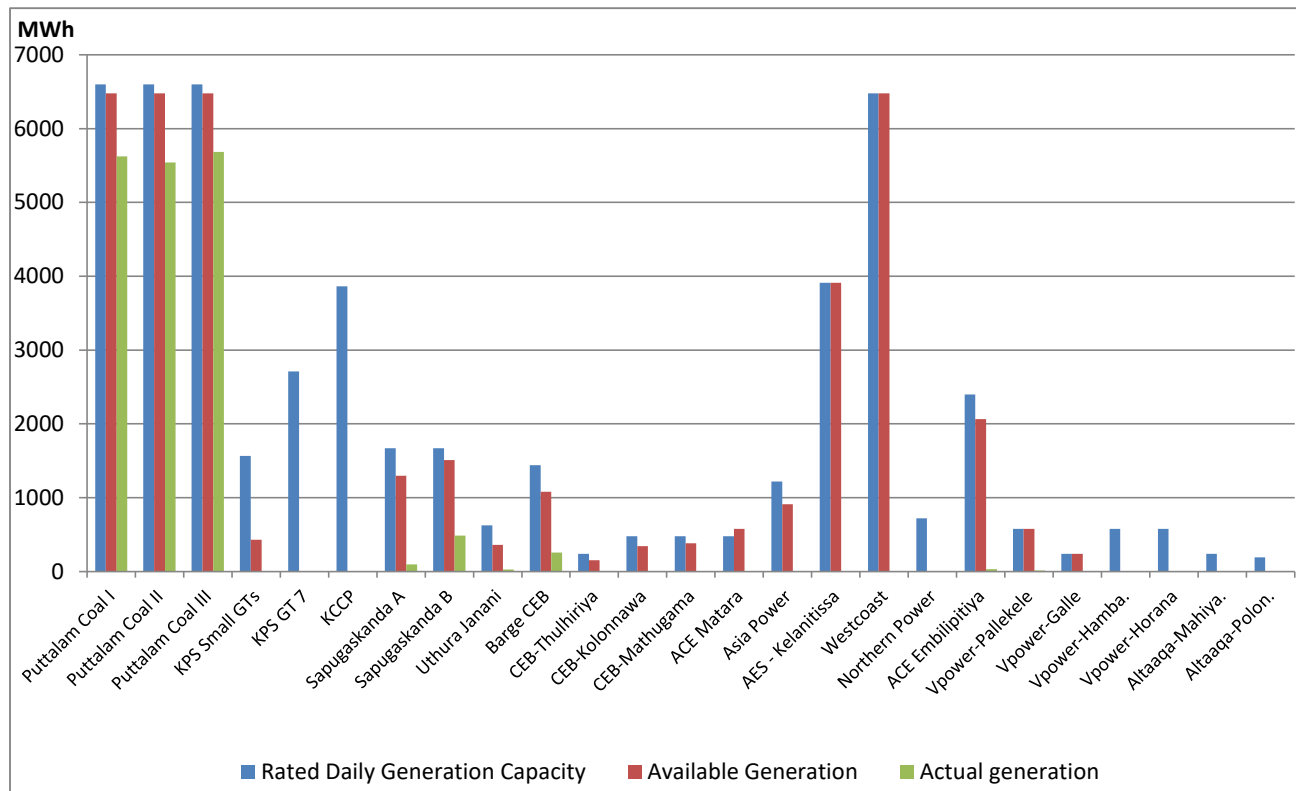
Category	Dispatch (GWh)	
CEB Hydro	283.0	34.25%
CEB Thermal Oil	58.6	7.09%
CEB Coal	361.6	43.76%
IPP Thermal	92.4	11.19%
SPP Wind	25.6	3.09%
SPP Solar	5.2	0.63%
Total	826.3	

For Current Year

Category	Dispatch (GWh)	
CEB Hydro	2,615.7	25.07%
CEB Thermal Oil	1,113.2	10.67%
CEB Coal	4,334.2	41.54%
IPP Thermal	2,056.0	19.70%
SPP Wind	241.7	2.32%
SPP Solar	73.5	0.70%
Total	10,434.2	

Thermal Plant Dispatch

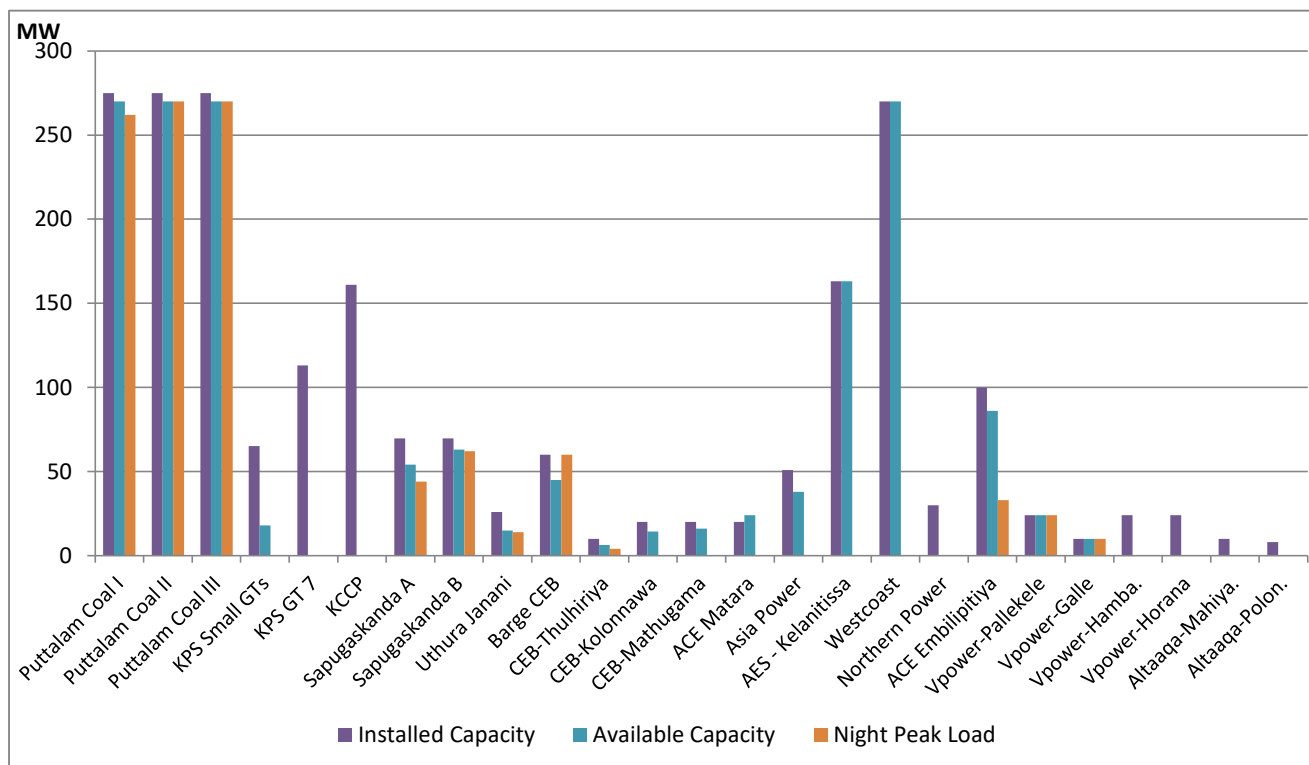
September 21, 2020



Available Generation is estimated based on plant availability at 6.00am on

September 22, 2020

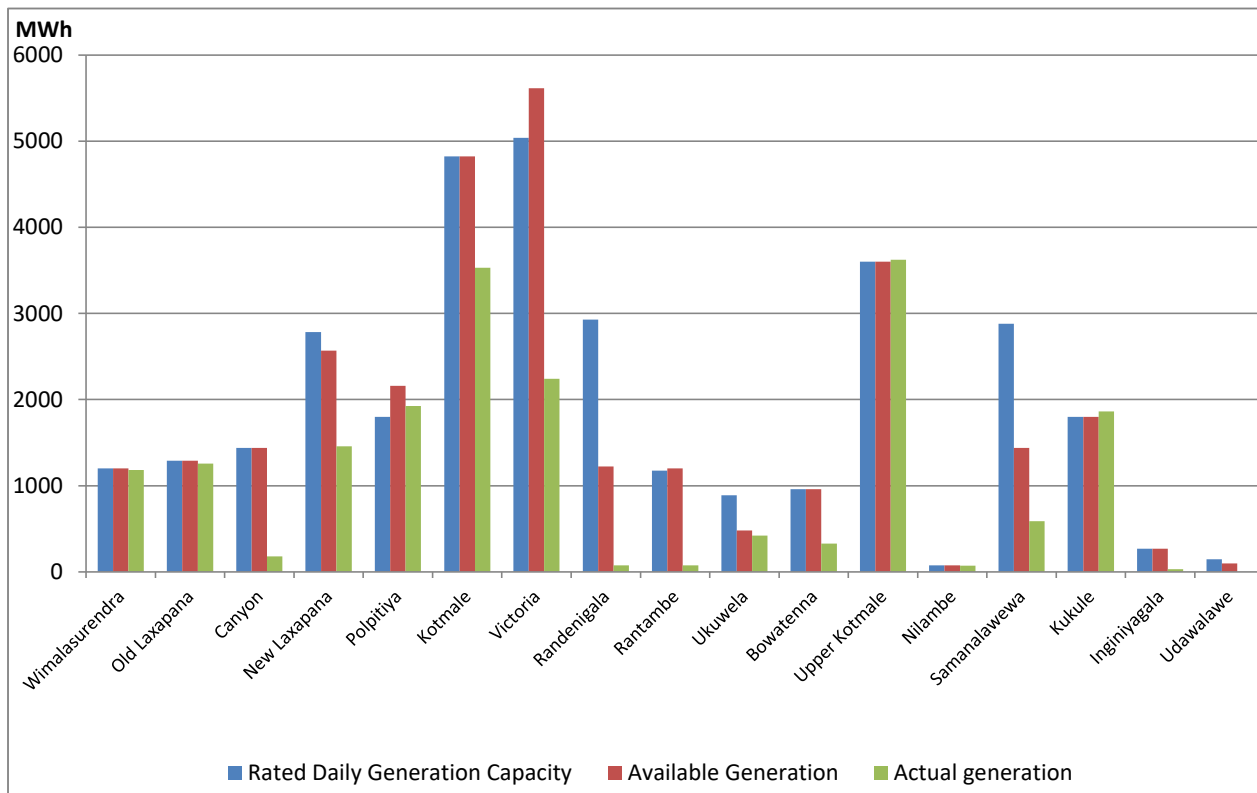
Thermal Plant Loading at the Night Peak



Note- Plant availability is recorded at 6.00 am on September 22, 2020

Major Hydro Plant Dispatch

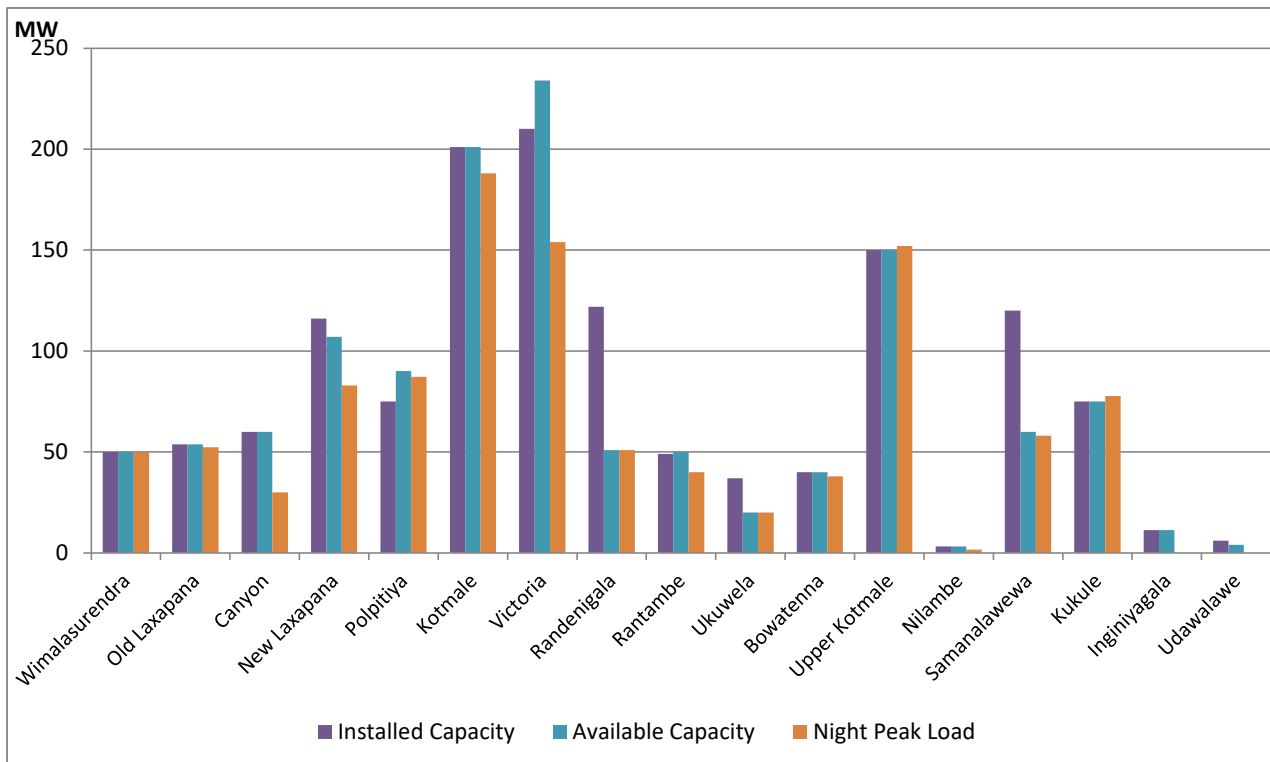
September 21, 2020



Note- Available Generation is estimated based on plant availability at 6.00am on September 22, 2020

Major Hydro Plant Loading at Night Peak

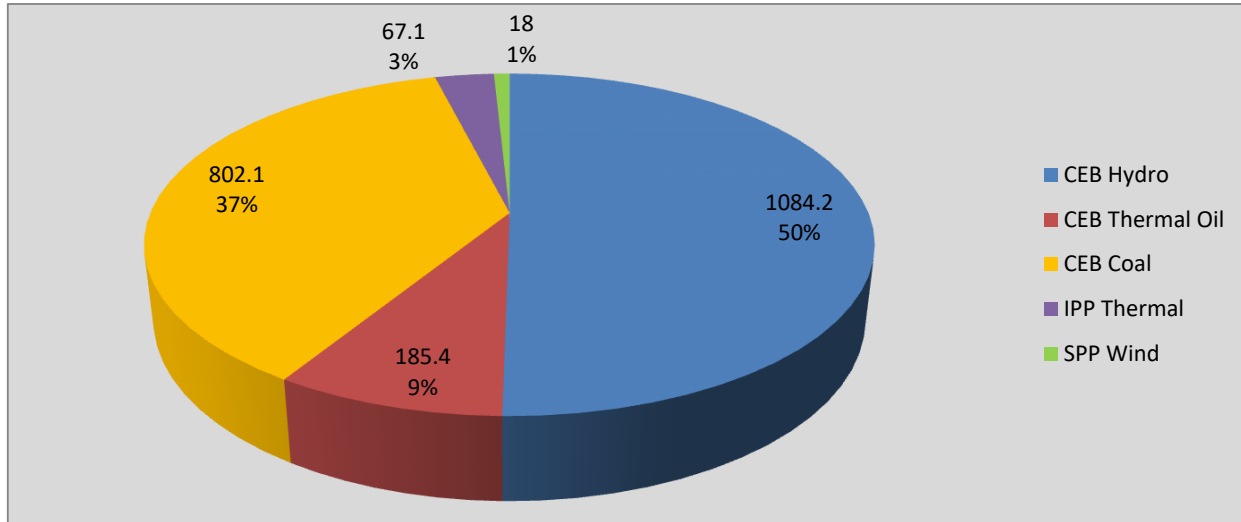
September 21, 2020



Note- Plant availability is recorded at 6.00 am on September 22, 2020

Contribution to the Night Peak in MW

September 21, 2020



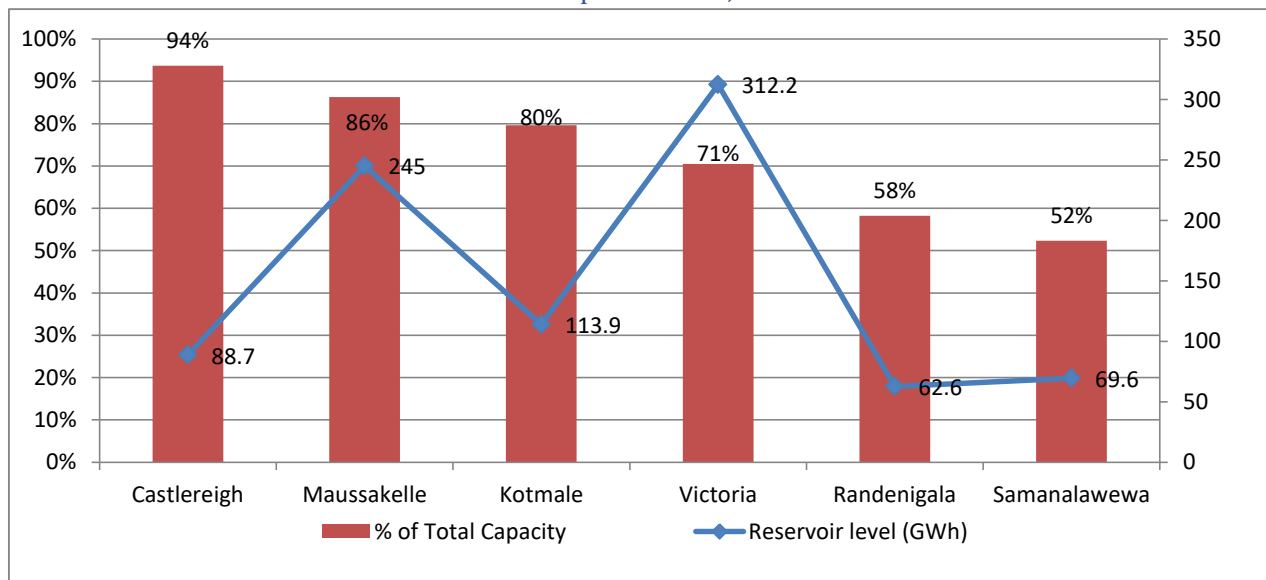
Night Peak*	2,156.7 MW
Day Peak	1,933.7 MW
Minimum Demand	1,068.3 MW

Notes: *The above chart pattern and night peak figure is presented excluding the contribution of Moragahakanda, other minihydro and biomass power plants from June 8 2020 onwards

**Day peak and Minimum demand includes the contribution from Moragahakanda, wind and solar plants

* in addition to the night peak figure presented above, Moragahakanda plant, other MiniHydro and Biomass Plants of installed capacity 226.00 MW has recorded total 167.60 MW at night peak

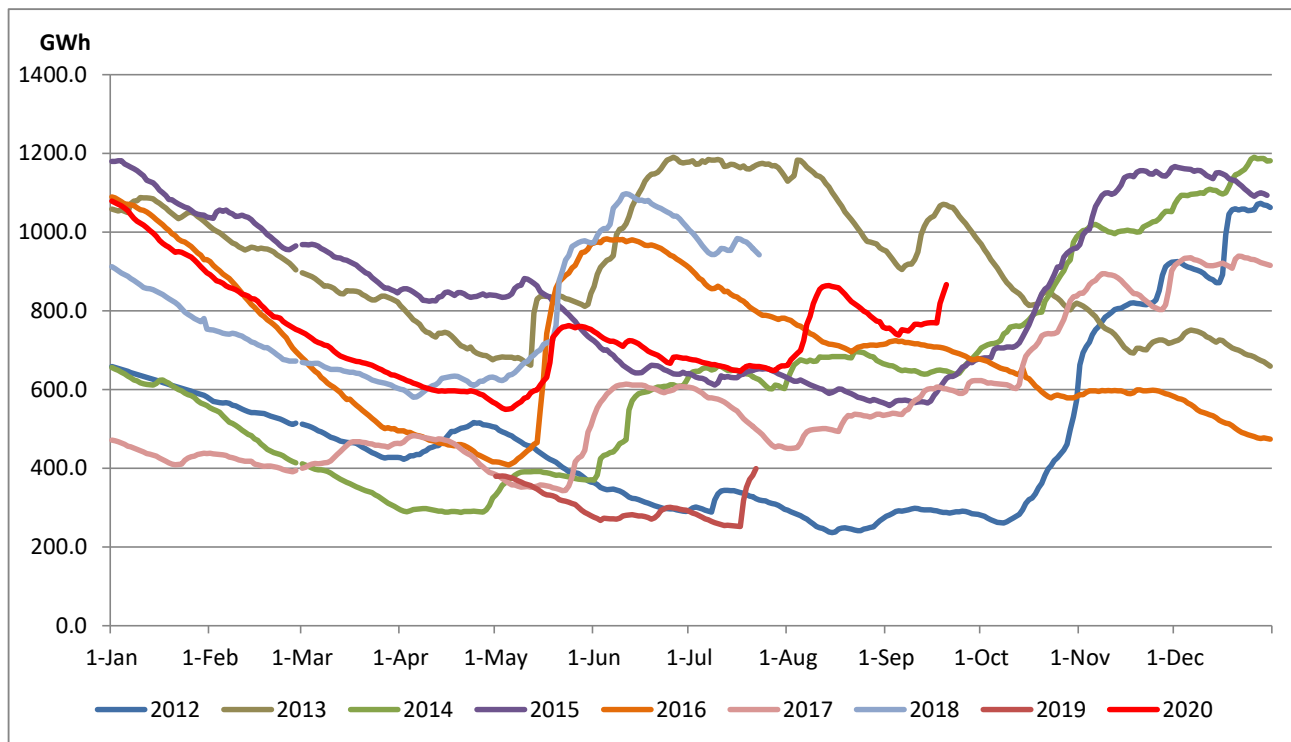
Reservoir Levels - as at 06.00 Hr on September 22, 2020



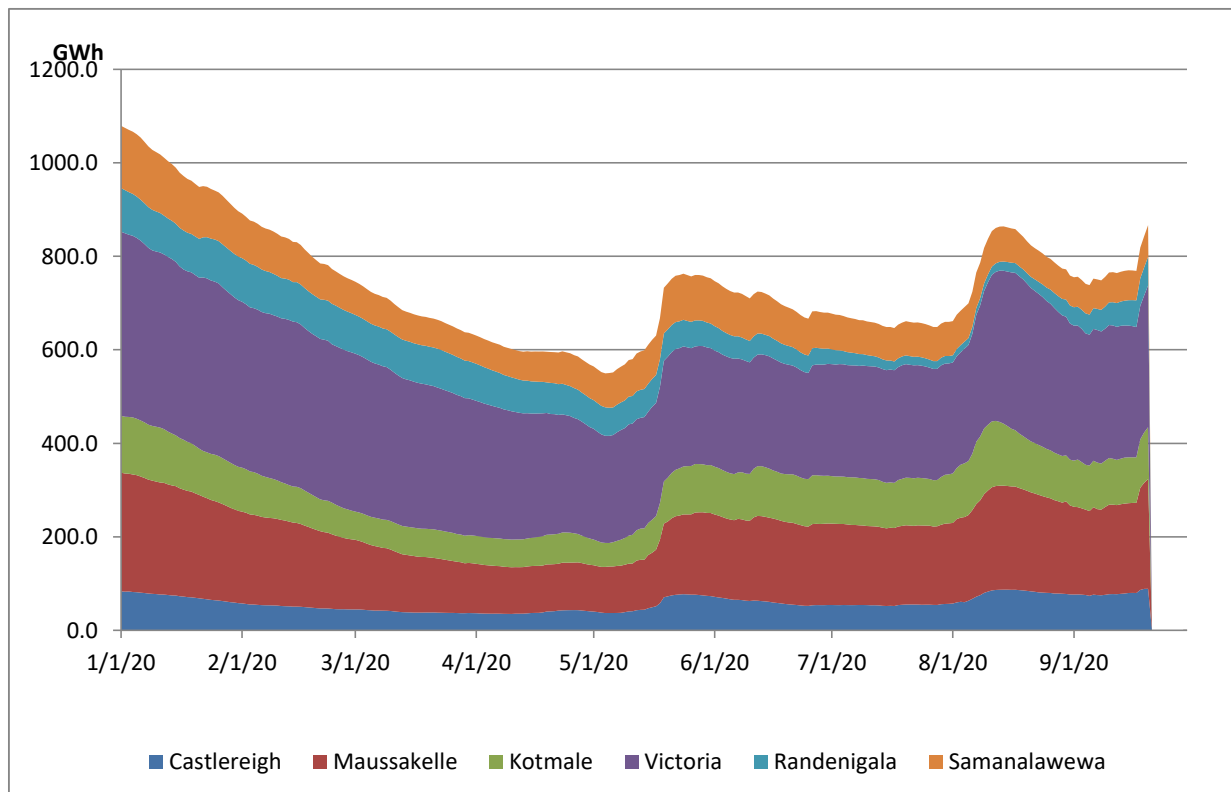
Total Reservoir Level(GWh) 892
% of Total capacity 74.0%

Comparison of Total Reservoir Storage Levels with Past Years

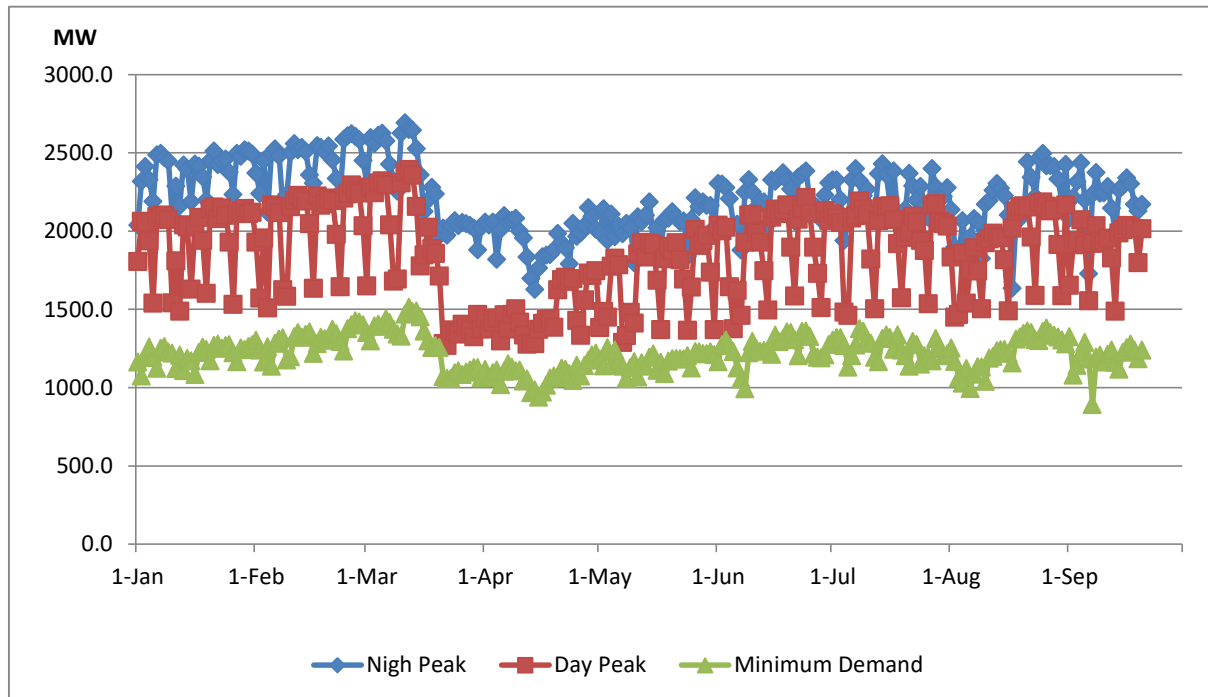
Data from June 2018 to March 2020 are not indicated in the graph



Variation of Major Hydro Reservoir Levels in the current year (GWh)



Variation of Demand during the current year



Notes: The night peak graph in the above chart is revised from June 8, 2020 to exclude the contribution from Mini hydro and biomass power plants

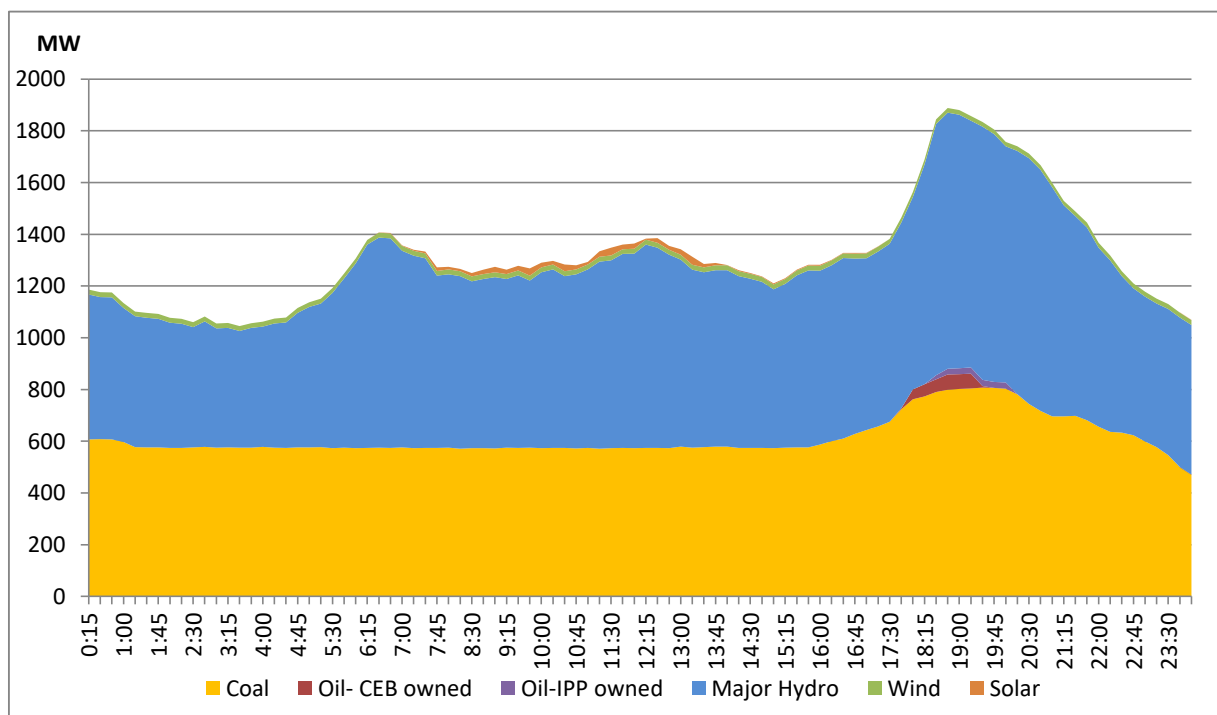
Day peak and minimum demand graphs includes the contribution from Moragahakanda power plant

All graphs include the contribution telemetered from solar and wind plants

Daily Load Curve of the Previous day

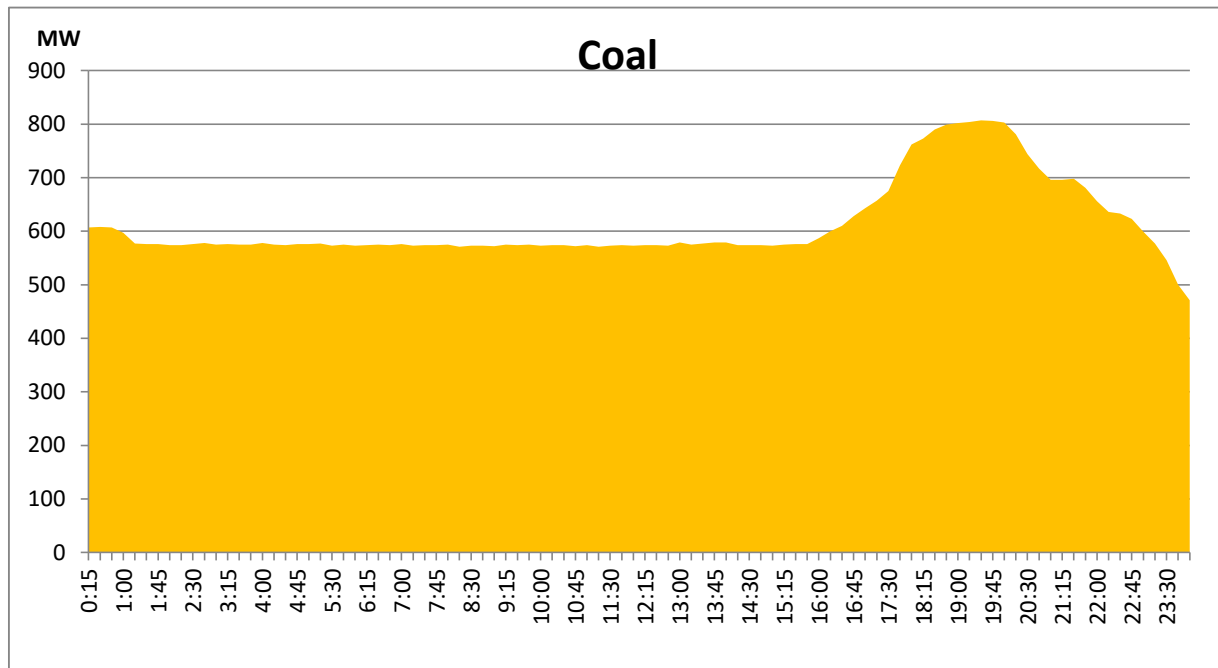
September 20, 2020

Solar and wind data is based on Telemetered Power Stations only



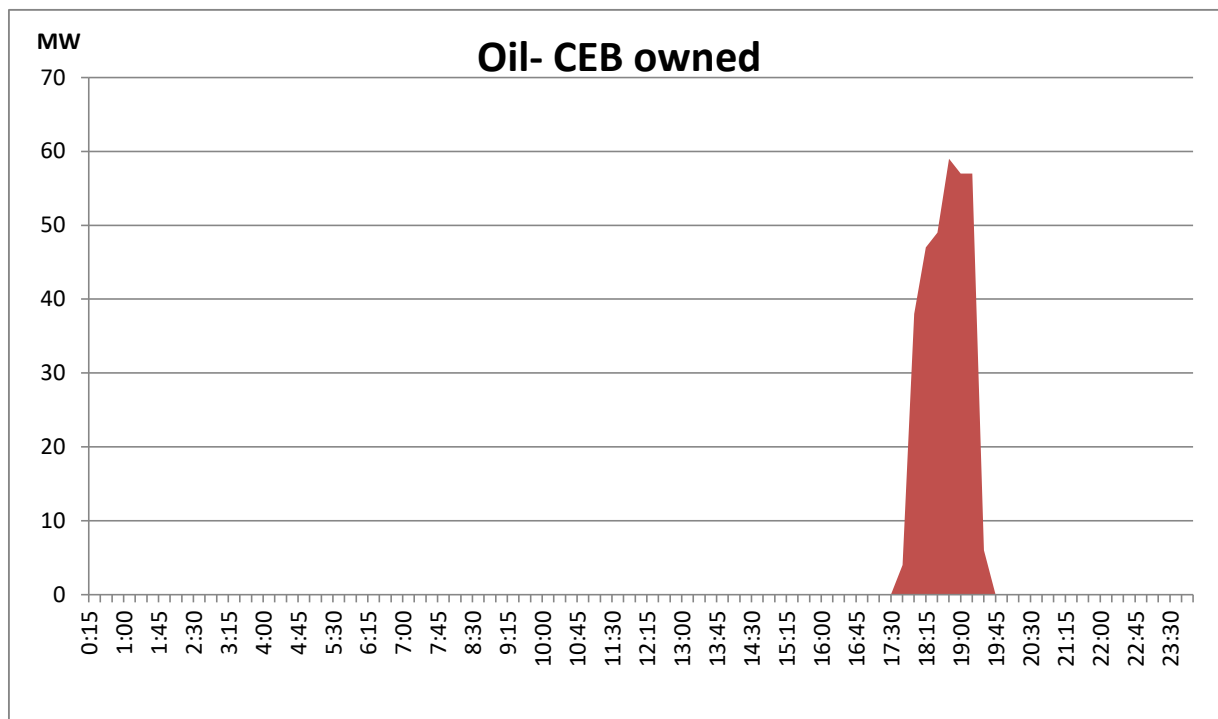
Coal Generation during the Previous day

September 20, 2020



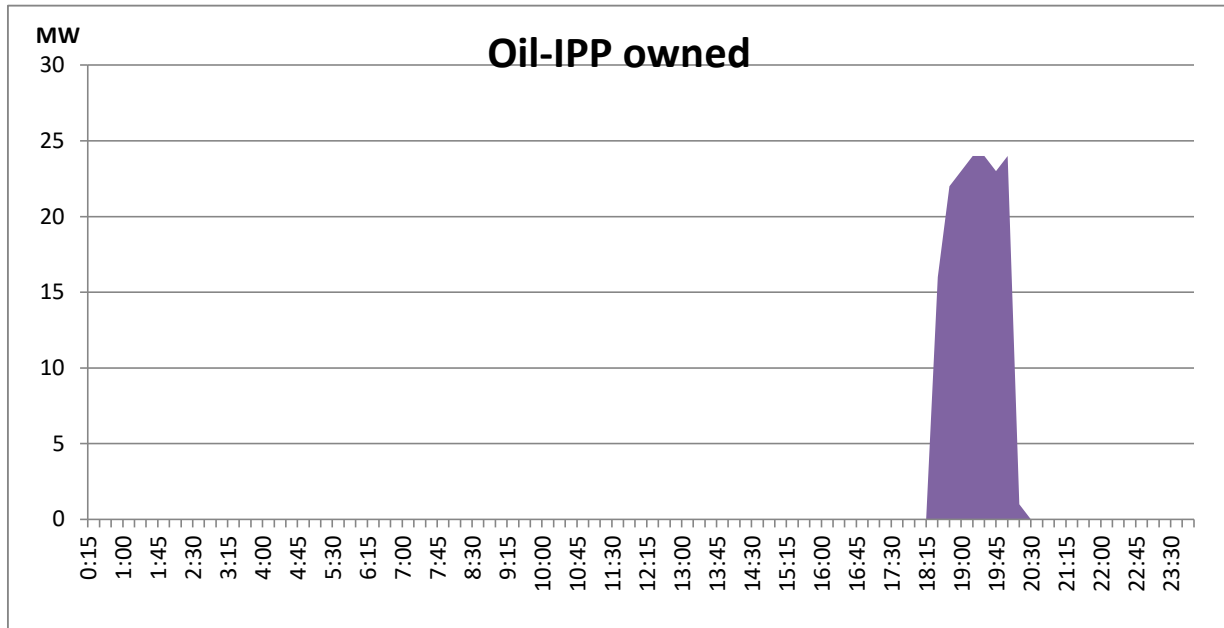
CEB Oil Plant Generation during the Previous day

September 20, 2020



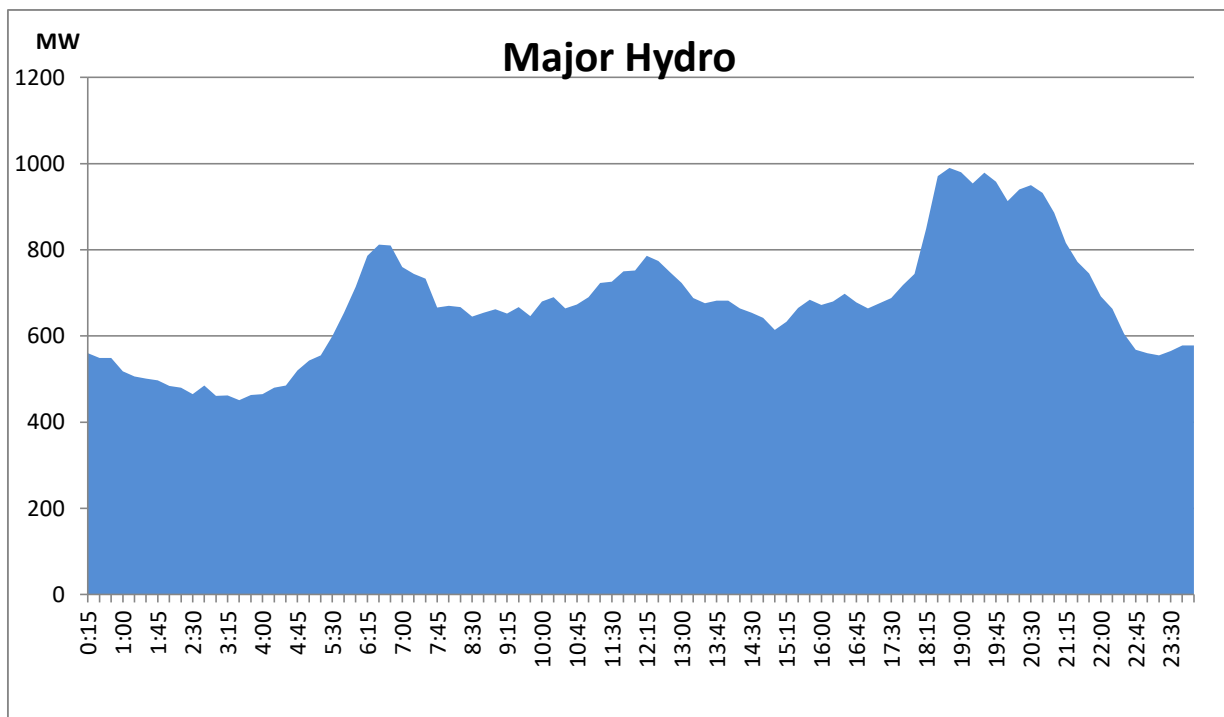
IPP Oil Plant Generation during the Previous day

September 20, 2020



Major Hydro Generation during the Previous day

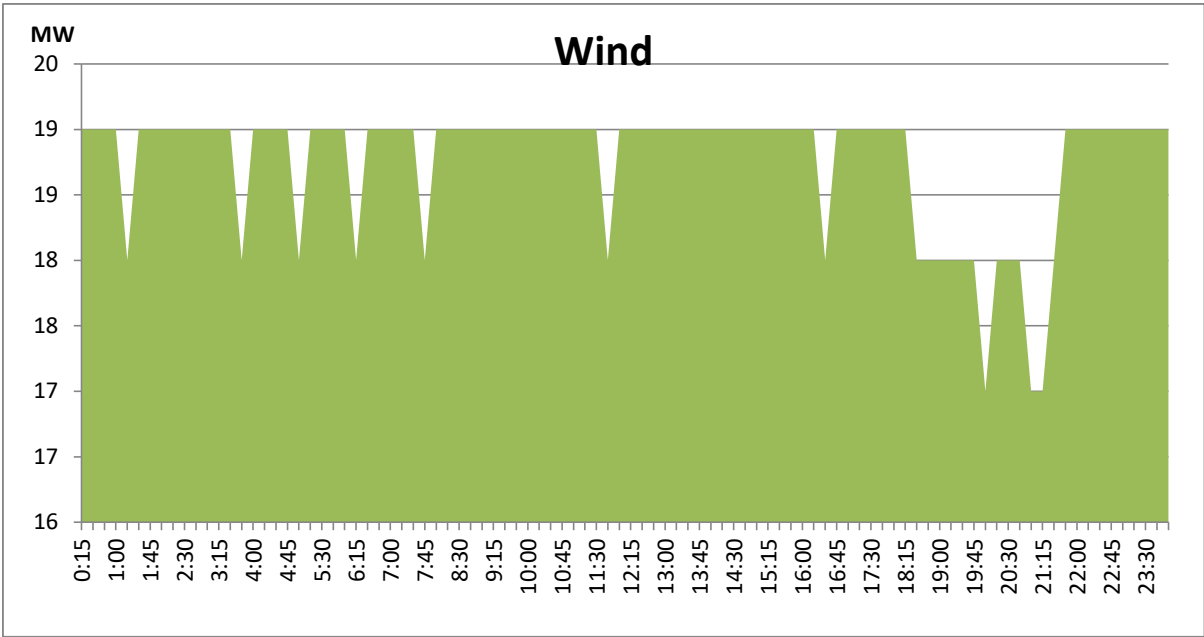
September 20, 2020



Wind Generation during the Previous day

September 20, 2020

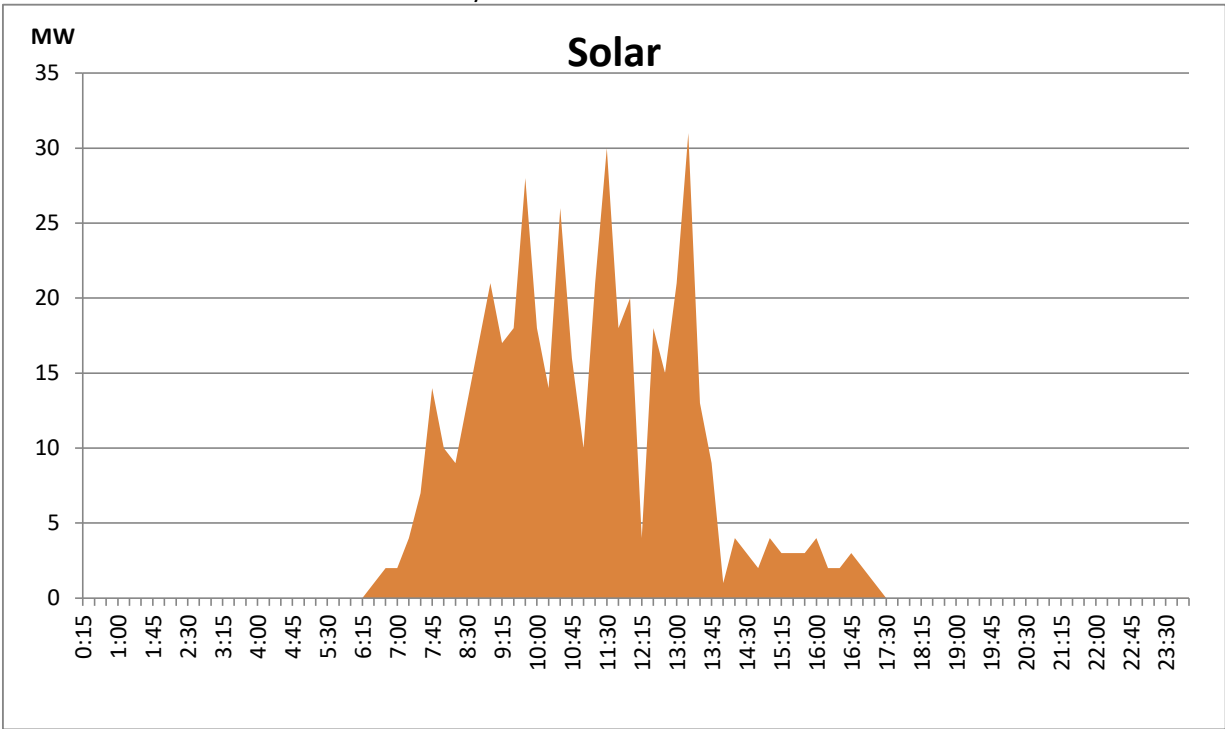
Based on Telemetered Power Stations only



Solar Generation during the Previous day

September 20, 2020

Based on Telemetered Power Stations only



Plant	Installed Capacity	Plant Availability	Night peak Load	Plant Dispatch
	(MW)	(MW)	(MW)	(GWh)
Wimalasurendra	50.00	50.00	50.00	1,181.00
Old Laxapana	53.80	53.80	52.40	1,257.00
Canyon	60.00	60.00	30.00	178.00
New Laxapana	116.00	107.00	83.00	1,459.00
Polpitiya	75.00	90.00	87.20	1,926.00
Kotmale	201.00	201.00	188.00	3,530.00
Victoria	210.00	234.00	154.00	2,241.00
Randenigala	122.00	51.00	51.00	76.00
Rantambe	49.00	50.00	40.00	75.00
Ukuwela	37.00	20.00	20.00	419.00
Bowatenna	40.00	40.00	38.00	327.00
Upper Kotmale	150.00	150.00	152.00	3,625.00
Nilambe	3.20	3.20	1.60	71.00
Samanalawewa	120.00	60.00	58.00	586.00
Kukule	75.00	75.00	77.70	1,861.00
Inginiyagala	11.25	11.25	-	30.00
Udawalawe	6.00	4.00	-	-
Puttalam Coal I	275.00	270.00	262.00	5,626.00
Puttalam Coal II	275.00	270.00	270.00	5,542.00
Puttalam Coal III	275.00	270.00	270.00	5,683.00
KPS Small GTs	65.20	18.00	-	-
KPS GT 7	113.00	-	-	-
KCCP	161.00	-	-	-
Sapugaskanda A	69.60	54.00	44.00	98.00
Sapugaskanda B	69.60	63.00	62.00	488.00
Uthura Janani	26.01	15.00	14.00	27.00
Barge CEB	60.00	45.00	60.00	258.00
CEB-Thulhiriya	10.00	6.40	4.00	2.00
CEB-Kolonnawa	20.00	14.40	-	-
CEB-Mathugama	20.00	16.00	-	-
ACE Matara	20.00	24.00	-	-
Asia Power	50.80	38.00	-	-
AES - Kelanitissa	163.00	163.00	-	-
Westcoast	270.00	270.00	-	-
ACE Embilipitiya	100.00	86.00	33.00	31.00
Vpower-Pallekele	24.00	24.00	24.00	13.00
Vpower-Galle	10.00	10.00	10.00	5.00
Vpower-Hamba.	24.00	-	-	-
Vpower-Horana	24.00	-	-	-
Altaaqa-Mahiya.	10.00	-	-	-
Altaaqa-Polon.	8.00	-	-	-
Solar	58.00		-	197.00
Wind	128.00		18.00	1,685.00
MH and BM	394.00		168.00	Not available
Total without NCRE	3,522.46	2,917.05		

Night peak load of MH and BM only include loading of Minihydro plants of total capacity MW 226

Installed capacity of Solar, wind, Mini-hydro and Biomass plants are as of end of December 2019

Plant availability is the availability recorded at 6 am on

September 22, 2020

Thermal Plant Fuel types

Power Station	Primary Fuel
CEB Thermal	
Sapugaskanda 1	Heavy Fuel
Sapugaskanda 2	Heavy Fuel
Kelanitissa Small Gas Turbines	Auto Diesel
GT 7 - Kelanitissa	Auto Diesel
Kelanitissa CCY	Naptha & Diesel
Lakvijaya 1	Coal
Lakvijaya 2	Coal
Lakvijaya 3	Coal
Uthuru Janani	Heavy Fuel
Barge CEB	Furnace Oil

Power Station	Primary Fuel
Private Thermal	
Asia Power	Heavy Fuel
Sojitz -	Auto Diesel
West Coast	Low Sulphur Furnace oil
ACE Embilipitiya	Furnace Oil

Major Incidents during the day -as reported by CEB morning of

September 22, 2020

- 1) Norton pond spilling continues to the present hour.
- 2) Upper Kothmale spilling continues to the present hour.
- 3) Kukule spilling continues to the present hour.
- 4) New Polpitiya - Thulhiriya - Athurugiriya cct tripped from New Polpitiya end at 11:50 hrs due to operation of IDMT non-directional E/F protection. Cct restored at 22:19hrs.