

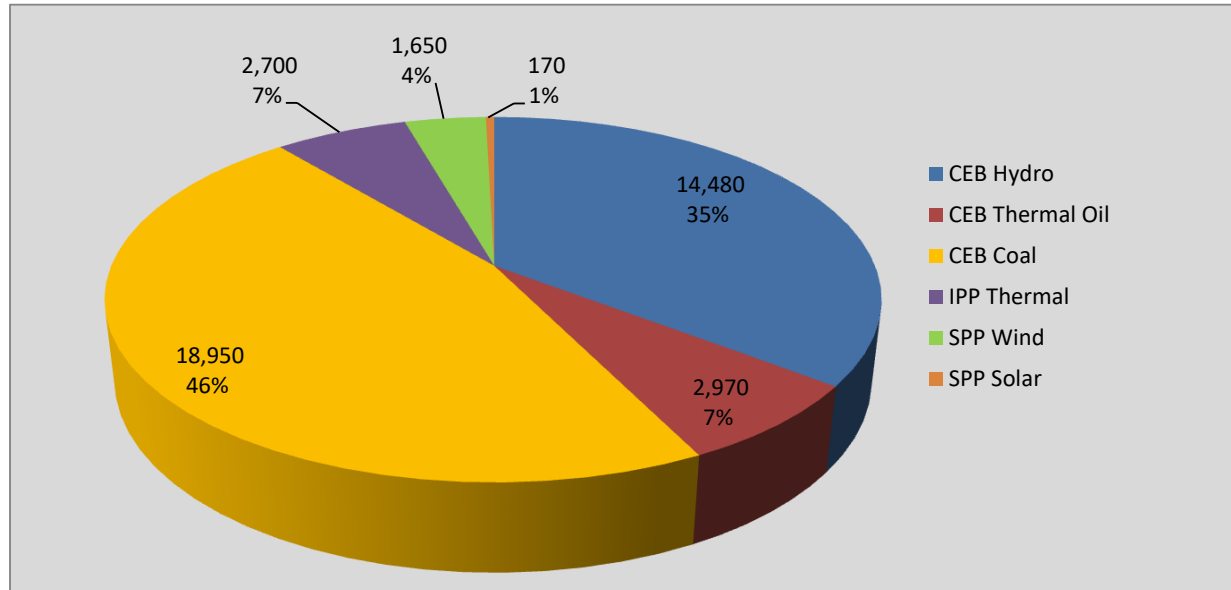
Generation and Reservoirs Statistics

September 18, 2020



PUBLIC UTILITIES COMMISSION OF SRI LANKA

Daily Generation Mix in MWh



Total Generation 40,930 MWh

Note: Generation from other SPPs (Mini Hydro and Biomass) is not included

Cumulative Dispatch

Note: Generation from other SPPs (Mini Hydro, small scale Solar and Biomass) is not included

For Current Month

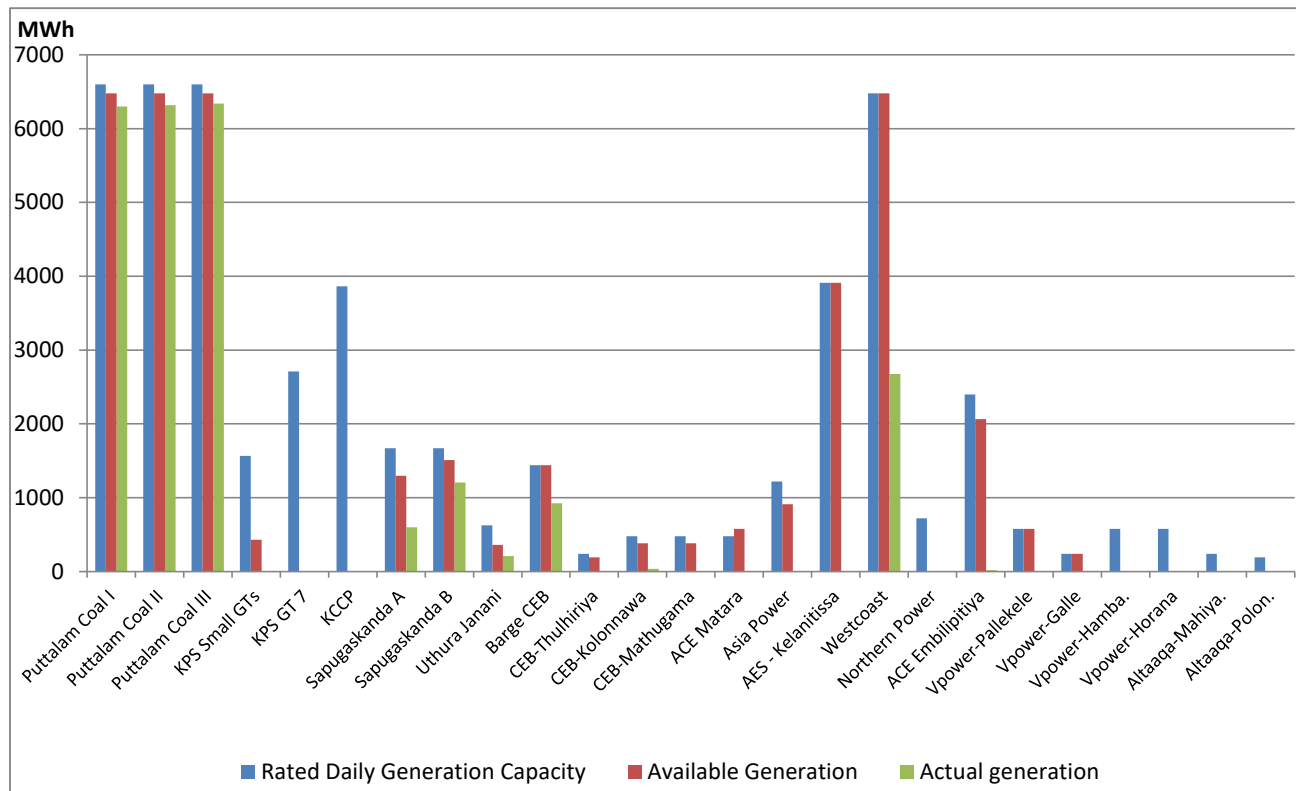
| Category | Dispatch (GWh) | |
|-----------------|----------------|--------|
| CEB Hydro | 229.5 | 31.98% |
| CEB Thermal Oil | 57.3 | 7.99% |
| CEB Coal | 313.1 | 43.63% |
| IPP Thermal | 92.3 | 12.87% |
| SPP Wind | 20.8 | 2.90% |
| SPP Solar | 4.5 | 0.63% |
| Total | 717.5 | |

For Current Year

| Category | Dispatch (GWh) | |
|-----------------|-----------------|--------|
| CEB Hydro | 2,562.2 | 24.81% |
| CEB Thermal Oil | 1,112.0 | 10.77% |
| CEB Coal | 4,285.6 | 41.51% |
| IPP Thermal | 2,055.9 | 19.91% |
| SPP Wind | 236.9 | 2.29% |
| SPP Solar | 72.9 | 0.71% |
| Total | 10,325.3 | |

Thermal Plant Dispatch

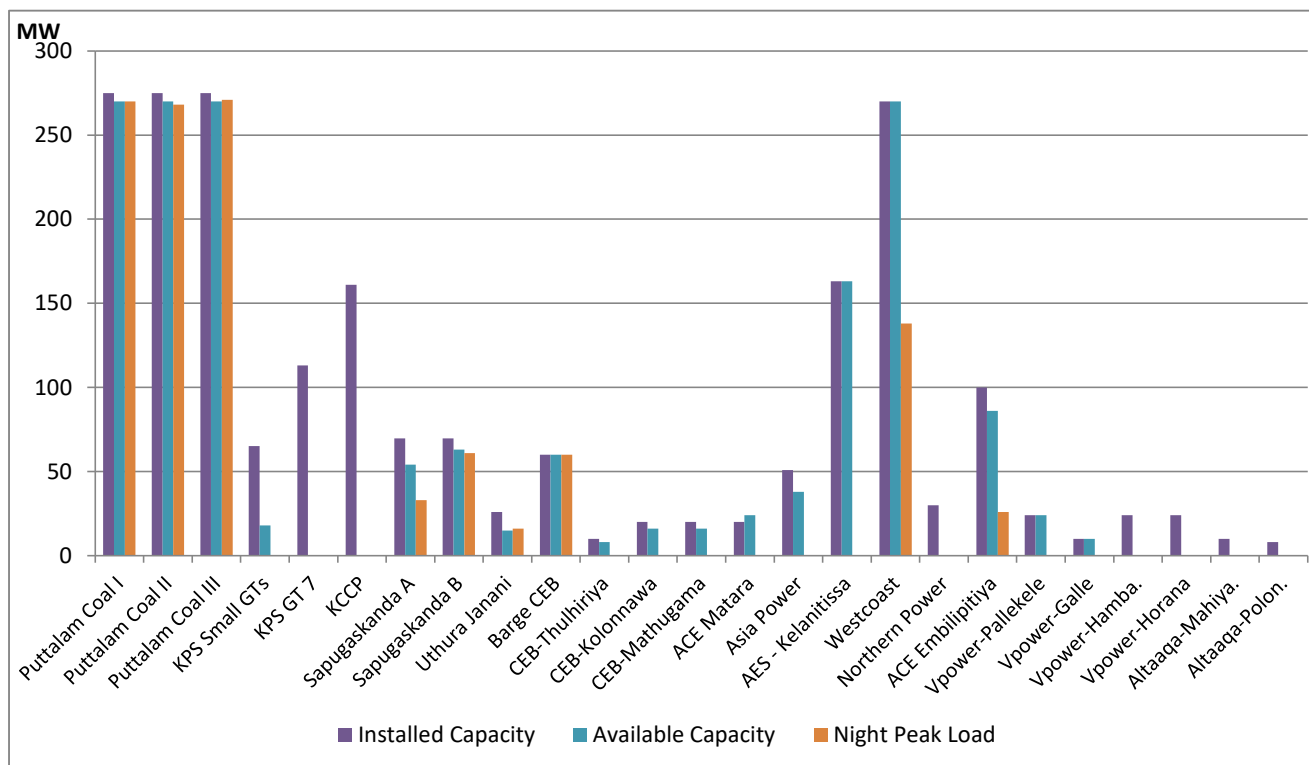
September 18, 2020



Available Generation is estimated based on plant availability at 6.00am on

September 19, 2020

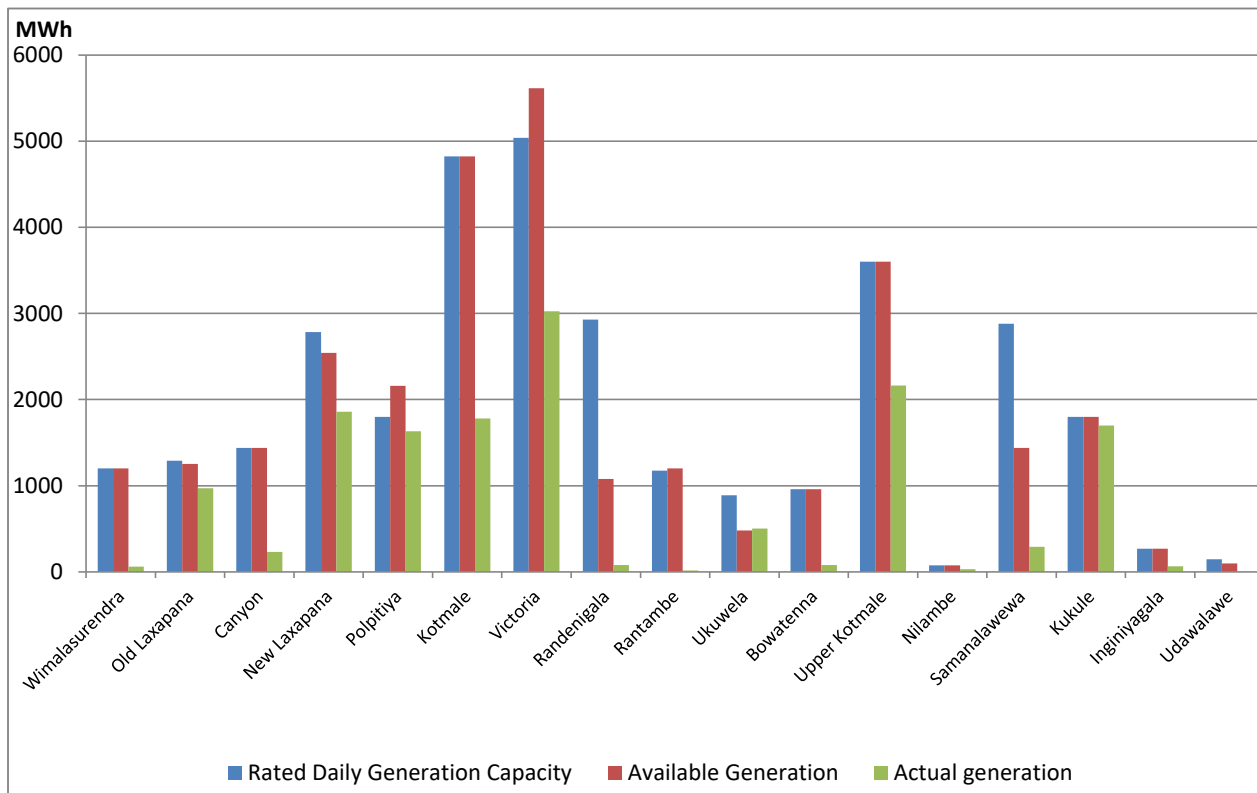
Thermal Plant Loading at the Night Peak



Note- Plant availability is recorded at 6.00 am on September 19, 2020

Major Hydro Plant Dispatch

September 18, 2020

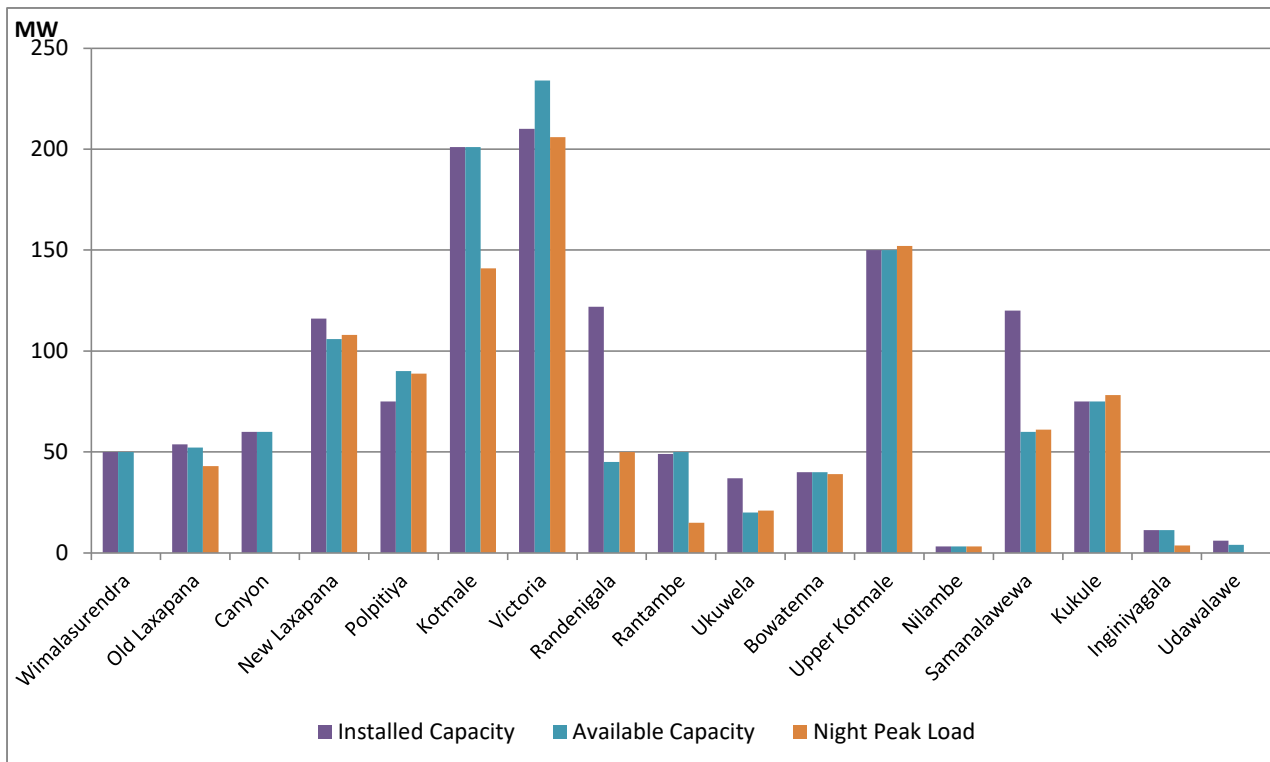


Note- Available Generation is estimated based on plant availability at 6.00am on

#####

Major Hydro Plant Loading at Night Peak

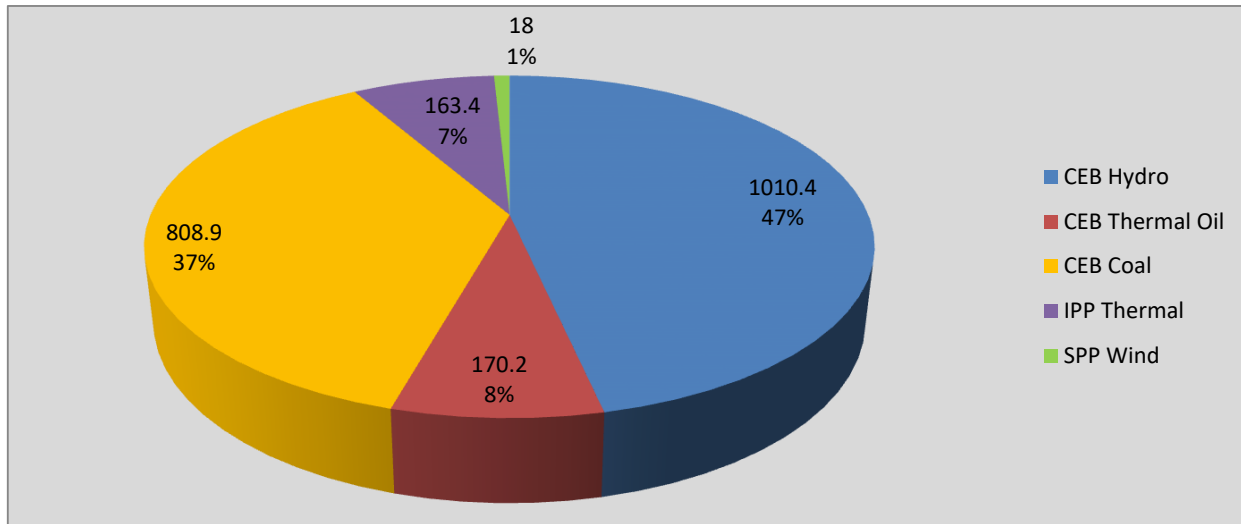
September 18, 2020



Note- Plant availability is recorded at 6.00 am on September 19, 2020

Contribution to the Night Peak in MW

September 18, 2020



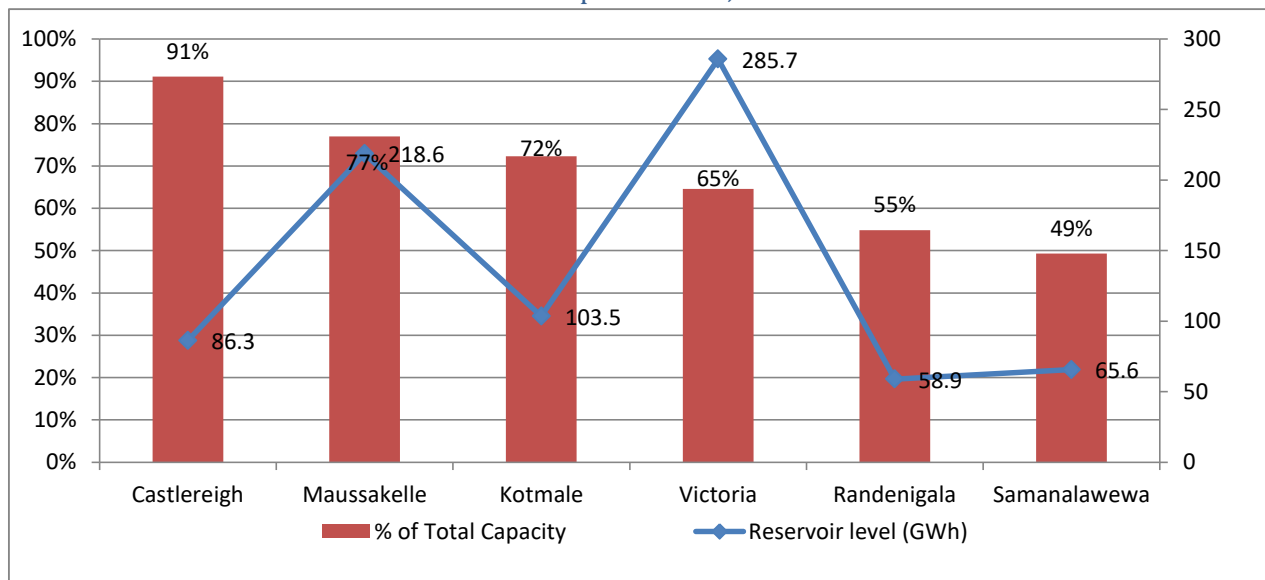
| | |
|----------------|------------|
| Night Peak* | 2,171.0 MW |
| Day Peak | 2,015.4 MW |
| Minimum Demand | 1,239.7 MW |

Notes: *The above chart pattern and night peak figure is presented excluding the contribution of Moragahakanda, other minihydro and biomass power plants from June 8 2020 onwards

**Day peak and Minimum demand includes the contribution from Moragahakanda, wind and solar plants

* in addition to the night peak figure presented above, Moragahakanda plant, other MiniHydro and Biomass Plants of installed capacity 191.62 MW has recorded total 136.30 MW at night peak

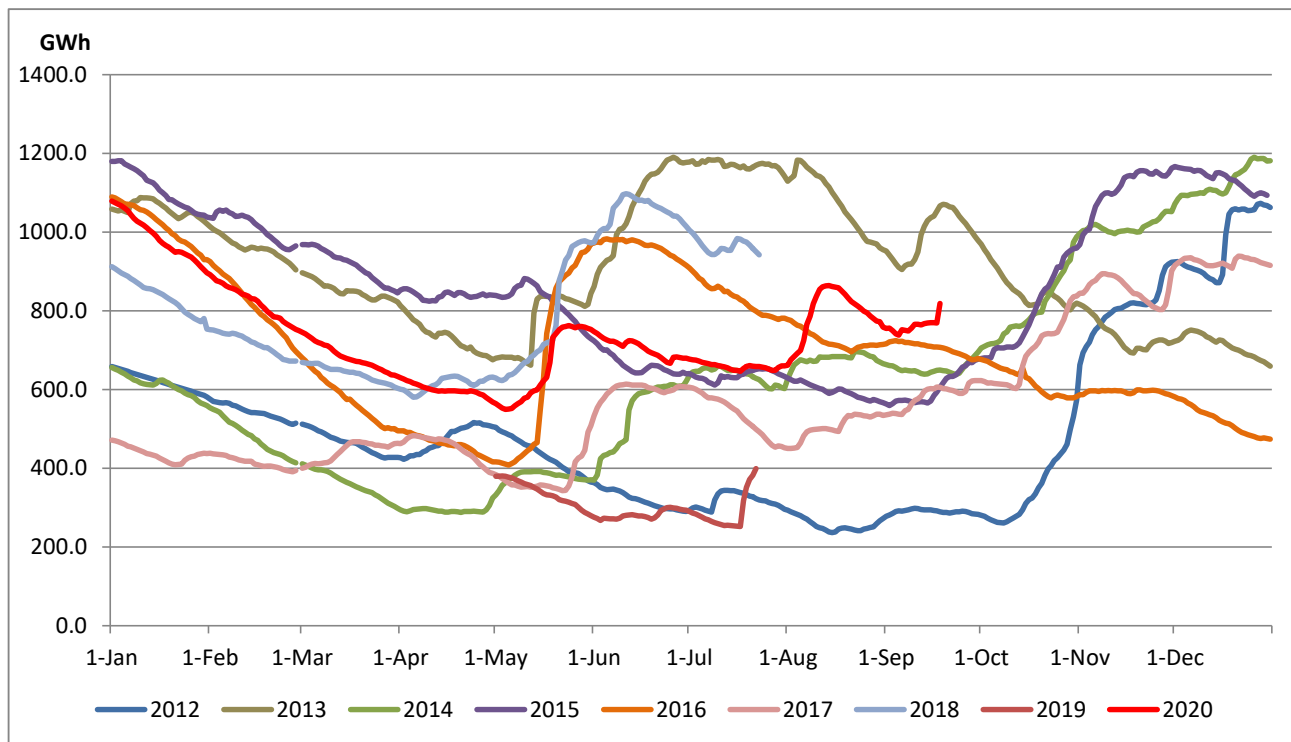
Reservoir Levels - as at 06.00 Hr on September 19, 2020



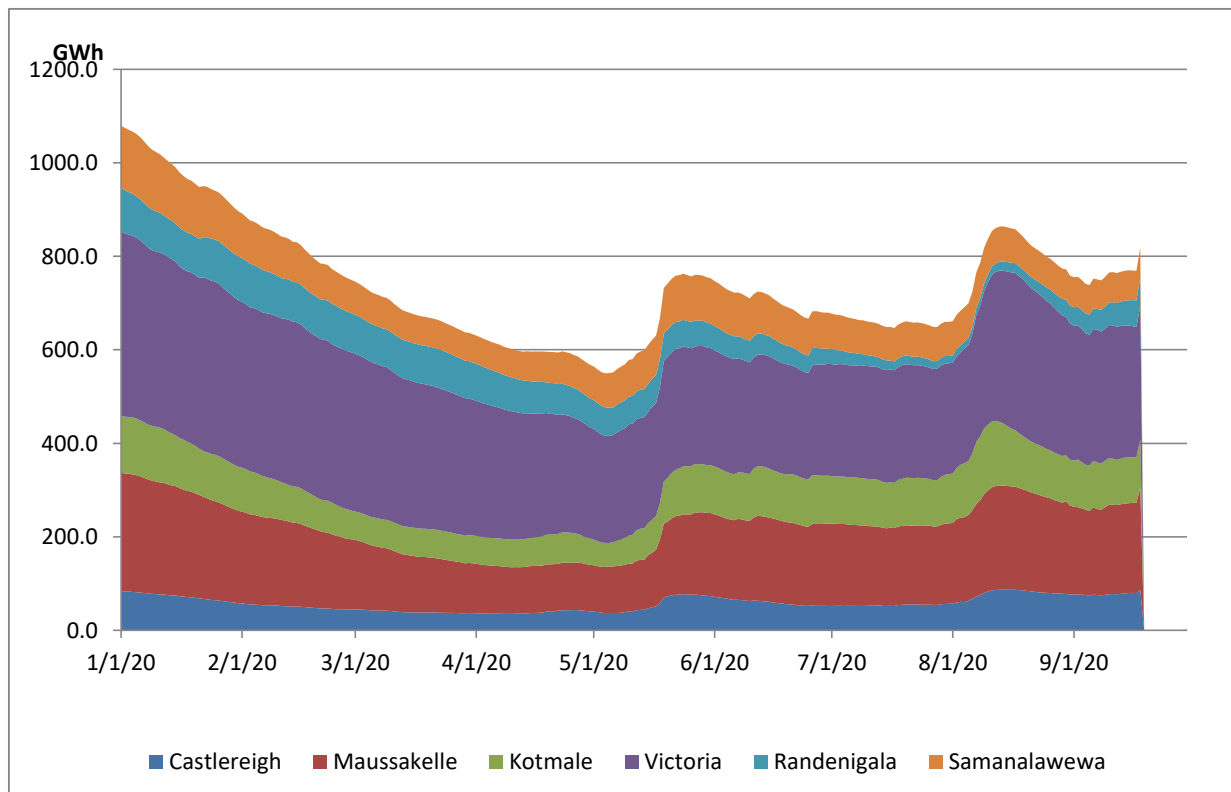
| | |
|----------------------------|-------|
| Total Reservoir Level(GWh) | 818.6 |
| % of Total capacity | 67.9% |

Comparison of Total Reservoir Storage Levels with Past Years

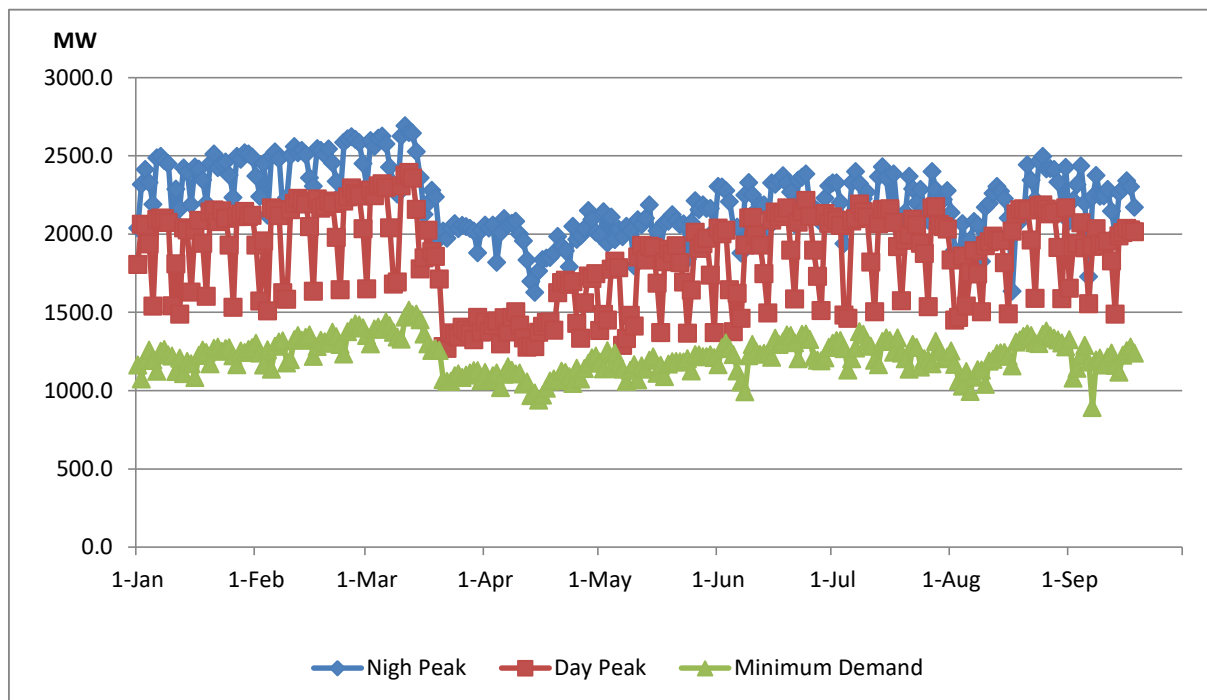
Data from June 2018 to March 2020 are not indicated in the graph



Variation of Major Hydro Reservoir Levels in the current year (GWh)



Variation of Demand during the current year



Notes: The night peak graph in the above chart is revised from June 8, 2020 to exclude the contribution from Mini hydro and biomass power plants

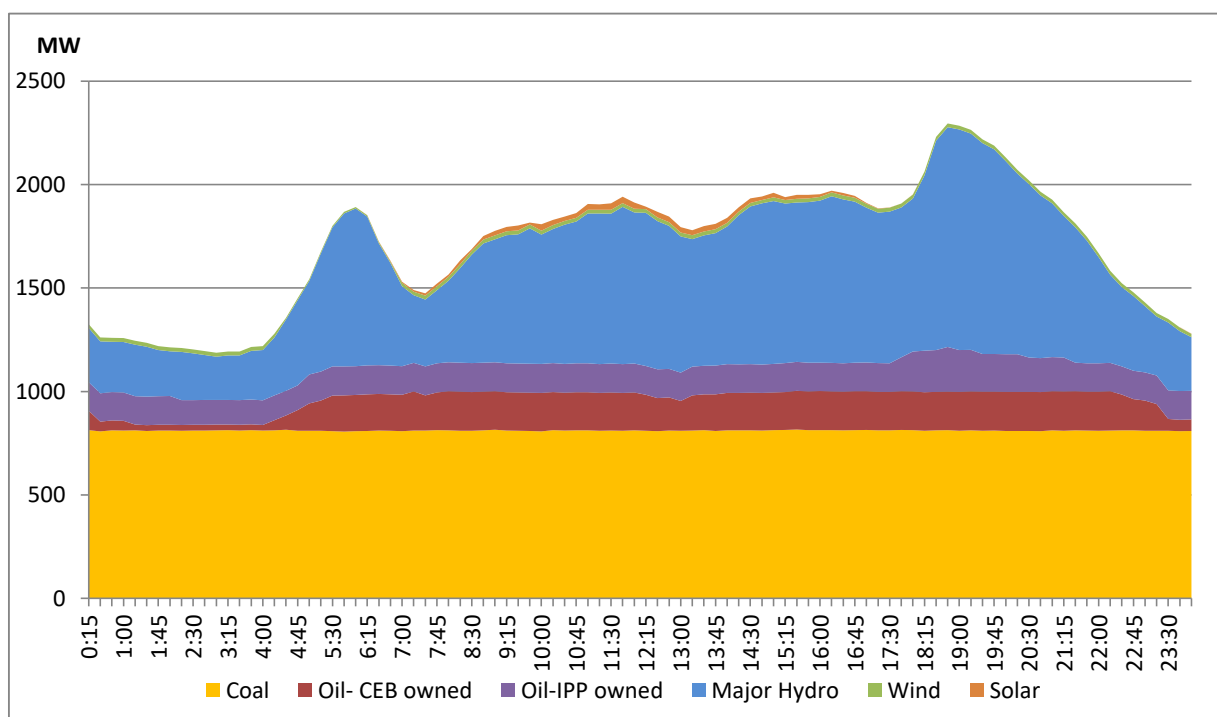
Day peak and minimum demand graphs includes the contribution from Moragahakanda power plant

All graphs include the contribution telemetered from solar and wind plants

Daily Load Curve of the Previous day

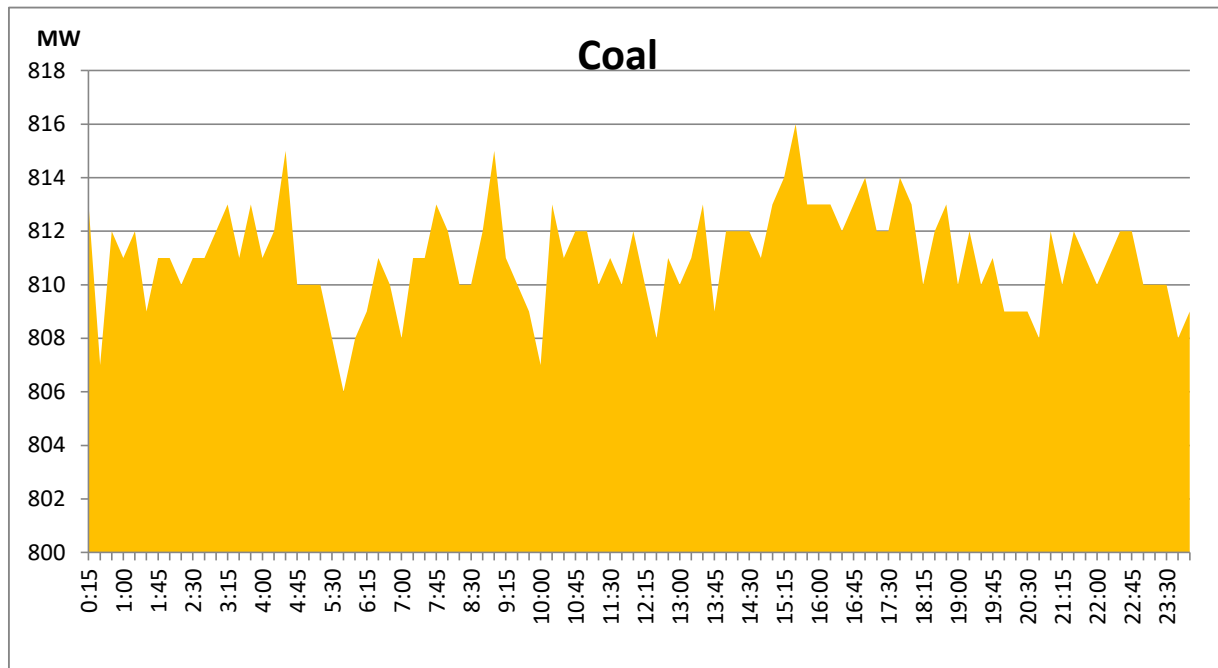
September 17, 2020

Solar and wind data is based on Telemetered Power Stations only



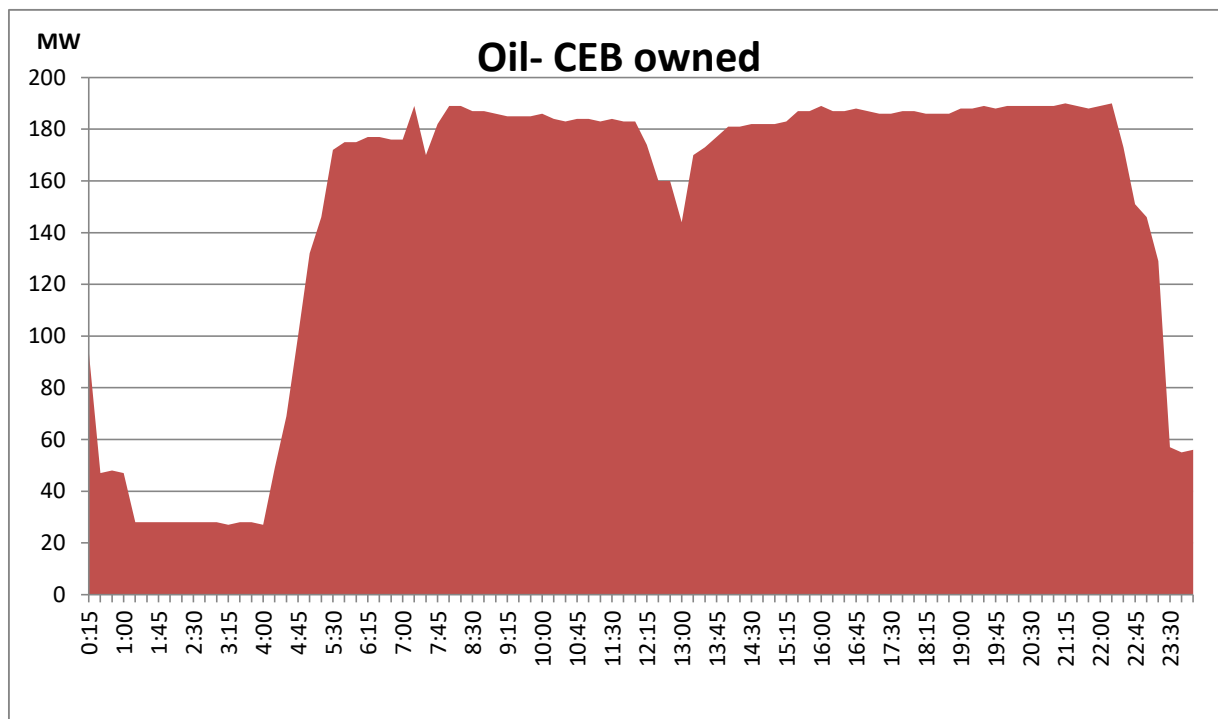
Coal Generation during the Previous day

September 17, 2020



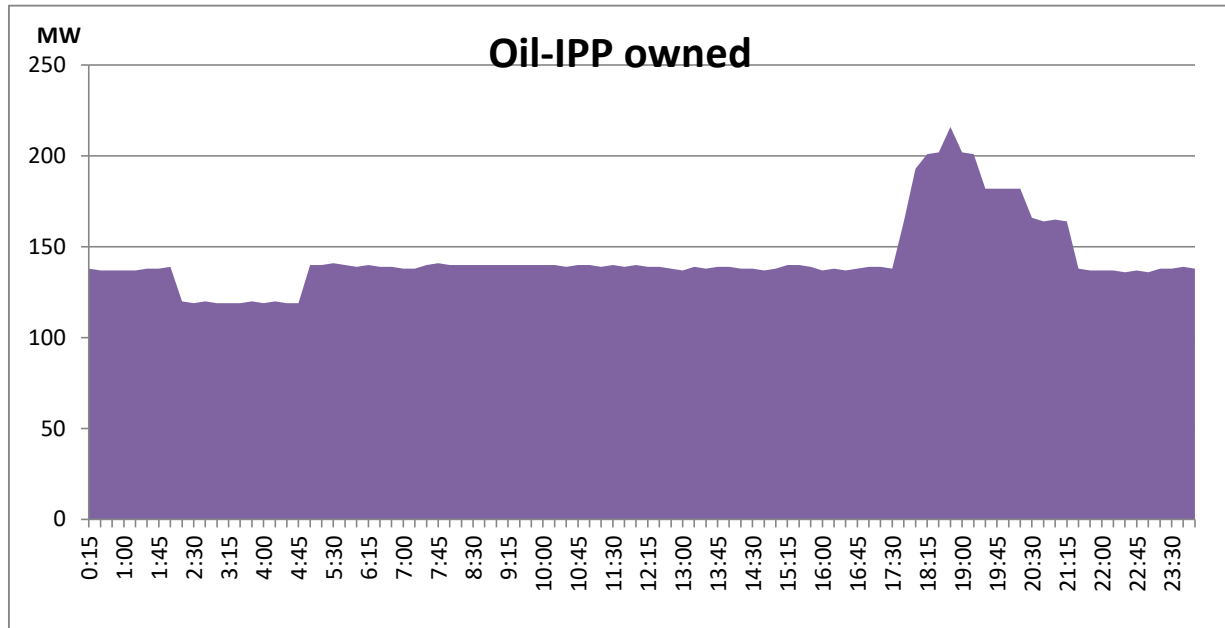
CEB Oil Plant Generation during the Previous day

September 17, 2020



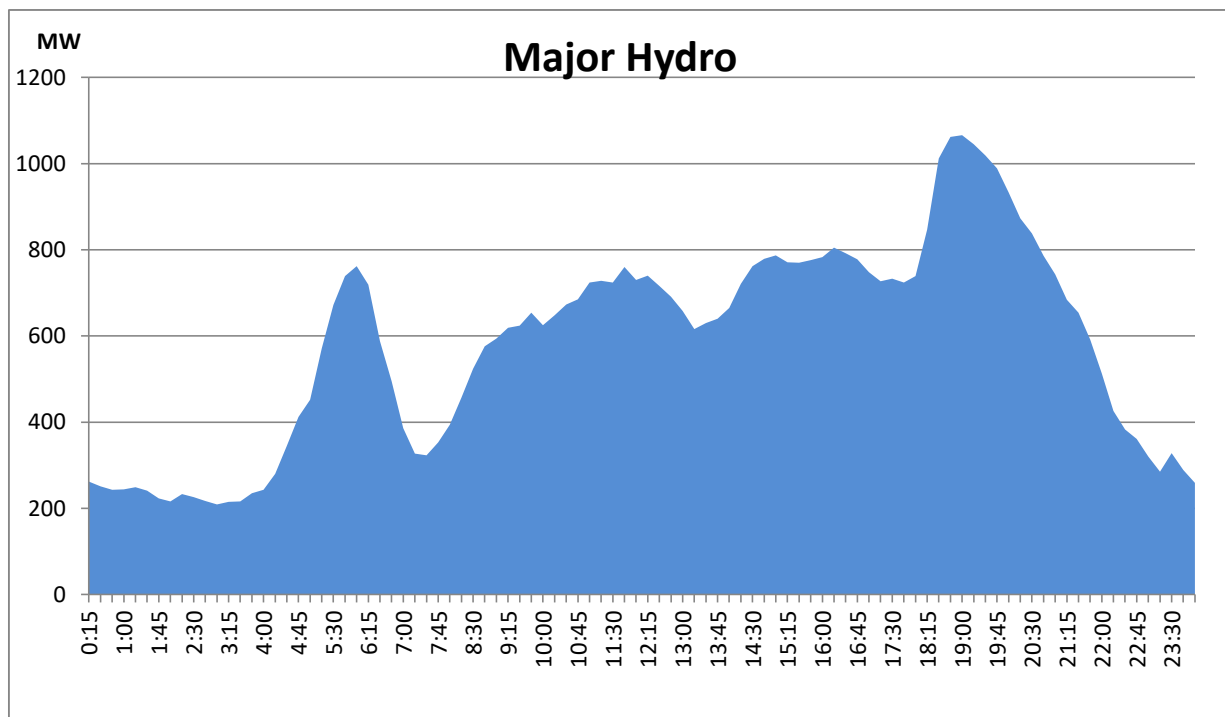
IPP Oil Plant Generation during the Previous day

September 17, 2020



Major Hydro Generation during the Previous day

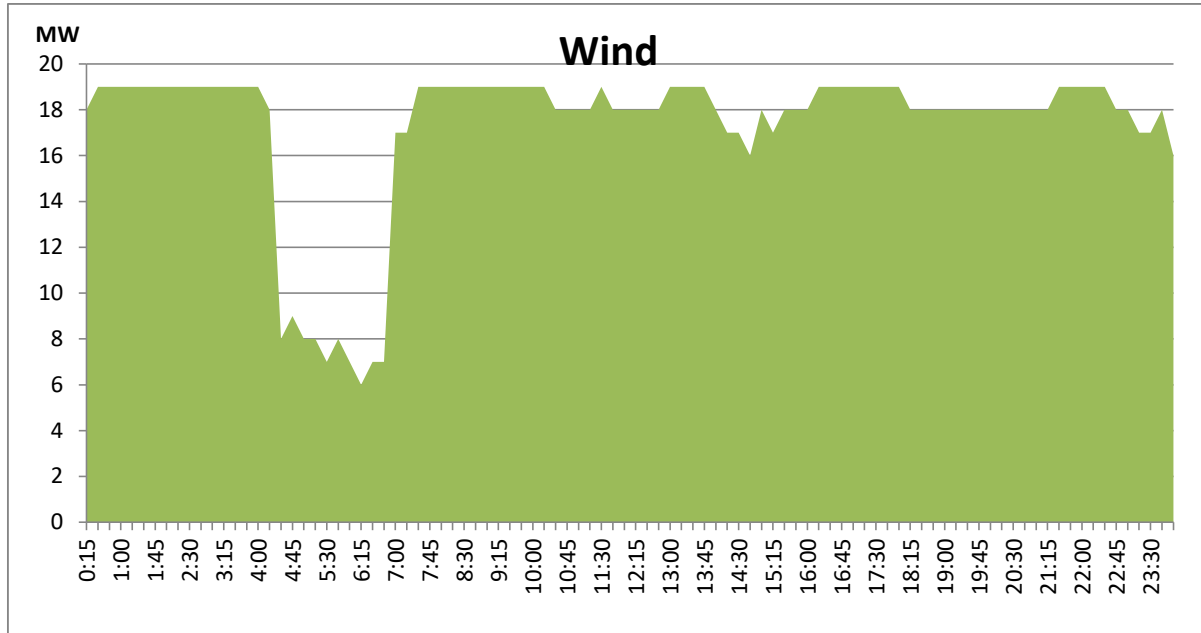
September 17, 2020



Wind Generation during the Previous day

September 17, 2020

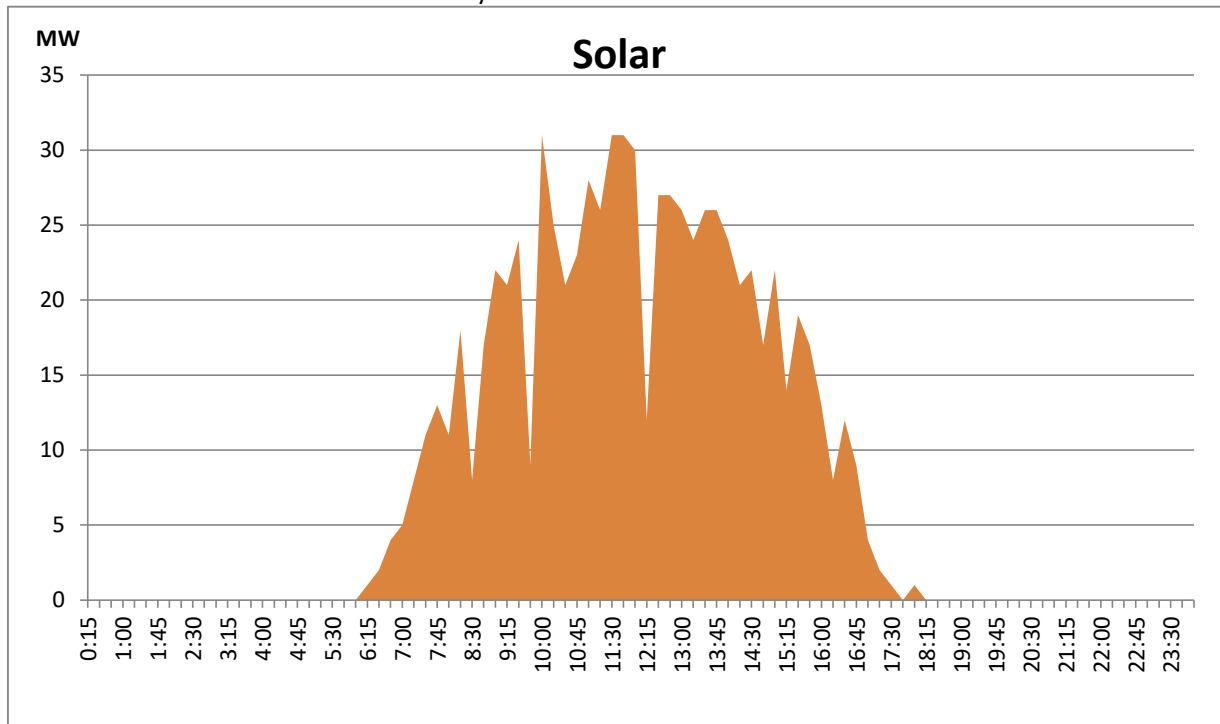
Based on Telemetered Power Stations only



Solar Generation during the Previous day

September 17, 2020

Based on Telemetered Power Stations only



| Plant | Installed Capacity | Plant Availability | Night peak Load | Plant Dispatch |
|--------------------|--------------------|--------------------|-----------------|----------------|
| | (MW) | (MW) | (MW) | (GWh) |
| Wimalasurendra | 50.00 | 50.00 | - | 61.00 |
| Old Laxapana | 53.80 | 52.20 | 43.00 | 970.00 |
| Canyon | 60.00 | 60.00 | - | 232.00 |
| New Laxapana | 116.00 | 106.00 | 108.00 | 1,857.00 |
| Polpitiya | 75.00 | 90.00 | 88.80 | 1,631.00 |
| Kotmale | 201.00 | 201.00 | 141.00 | 1,780.00 |
| Victoria | 210.00 | 234.00 | 206.00 | 3,027.00 |
| Randenigala | 122.00 | 45.00 | 50.00 | 79.00 |
| Rantambe | 49.00 | 50.00 | 15.00 | 15.00 |
| Ukuwela | 37.00 | 20.00 | 21.00 | 502.00 |
| Bowatenna | 40.00 | 40.00 | 39.00 | 77.00 |
| Upper Kotmale | 150.00 | 150.00 | 152.00 | 2,165.00 |
| Nilambe | 3.20 | 3.20 | 3.20 | 31.00 |
| Samanalawewa | 120.00 | 60.00 | 61.00 | 291.00 |
| Kukule | 75.00 | 75.00 | 78.20 | 1,697.00 |
| Inginiyagala | 11.25 | 11.25 | 3.70 | 65.00 |
| Udawalawe | 6.00 | 4.00 | - | - |
| Puttalam Coal I | 275.00 | 270.00 | 270.00 | 6,300.00 |
| Puttalam Coal II | 275.00 | 270.00 | 268.00 | 6,316.00 |
| Puttalam Coal III | 275.00 | 270.00 | 271.00 | 6,339.00 |
| KPS Small GTs | 65.20 | 18.00 | - | - |
| KPS GT 7 | 113.00 | - | - | - |
| KCCP | 161.00 | - | - | - |
| Sapugaskanda A | 69.60 | 54.00 | 33.00 | 598.00 |
| Sapugaskanda B | 69.60 | 63.00 | 61.00 | 1,207.00 |
| Uthura Janani | 26.01 | 15.00 | 16.00 | 209.00 |
| Barge CEB | 60.00 | 60.00 | 60.00 | 925.00 |
| CEB-Thulhiriya | 10.00 | 8.00 | - | - |
| CEB-Kolonnawa | 20.00 | 16.00 | - | 34.00 |
| CEB-Mathugama | 20.00 | 16.00 | - | - |
| ACE Matara | 20.00 | 24.00 | - | - |
| Asia Power | 50.80 | 38.00 | - | - |
| AES - Kelanitissa | 163.00 | 163.00 | - | - |
| Westcoast | 270.00 | 270.00 | 138.00 | 2,677.00 |
| ACE Embilipitiya | 100.00 | 86.00 | 26.00 | 19.00 |
| Vpower-Pallekele | 24.00 | 24.00 | - | - |
| Vpower-Galle | 10.00 | 10.00 | - | - |
| Vpower-Hamba. | 24.00 | - | - | - |
| Vpower-Horana | 24.00 | - | - | - |
| Altaaqa-Mahiya. | 10.00 | - | - | - |
| Altaaqa-Polon. | 8.00 | - | - | - |
| Solar | 58.00 | | - | 175.00 |
| Wind | 128.00 | | 18.00 | 1,649.00 |
| MH and BM | 394.00 | | 136.00 | Not available |
| Total without NCRE | 3,522.46 | 2,926.65 | | |

Night peak load of MH and BM only include loading of Minihydro plants of total capacity MW 191.623

Installed capacity of Solar, wind, Mini-hydro and Biomass plants are as of end of December 2019

Plant availability is the availability recorded at 6 am on

September 19, 2020

Thermal Plant Fuel types

| Power Station | Primary Fuel |
|--------------------------------|-----------------|
| CEB Thermal | |
| Sapugaskanda 1 | Heavy Fuel |
| Sapugaskanda 2 | Heavy Fuel |
| Kelanitissa Small Gas Turbines | Auto Diesel |
| GT 7 - Kelanitissa | Auto Diesel |
| Kelanitissa CCY | Naptha & Diesel |
| Lakvijaya 1 | Coal |
| Lakvijaya 2 | Coal |
| Lakvijaya 3 | Coal |
| Uthuru Janani | Heavy Fuel |
| Barge CEB | Furnace Oil |
| | |

| Power Station | Primary Fuel |
|------------------|----------------------------|
| Private Thermal | |
| Asia Power | Heavy Fuel |
| Sojitz - | Auto Diesel |
| West Coast | Low Sulphur Furnace oil |
| | |
| ACE Embilipitiya | Furnace Oil |

Major Incidents during the day

1) Polpitiya Unit 02 tripped at 19:15hrs rejecting 45MW from the system due to bearing oil temperature high and resumed generation at 20:35hrs.