

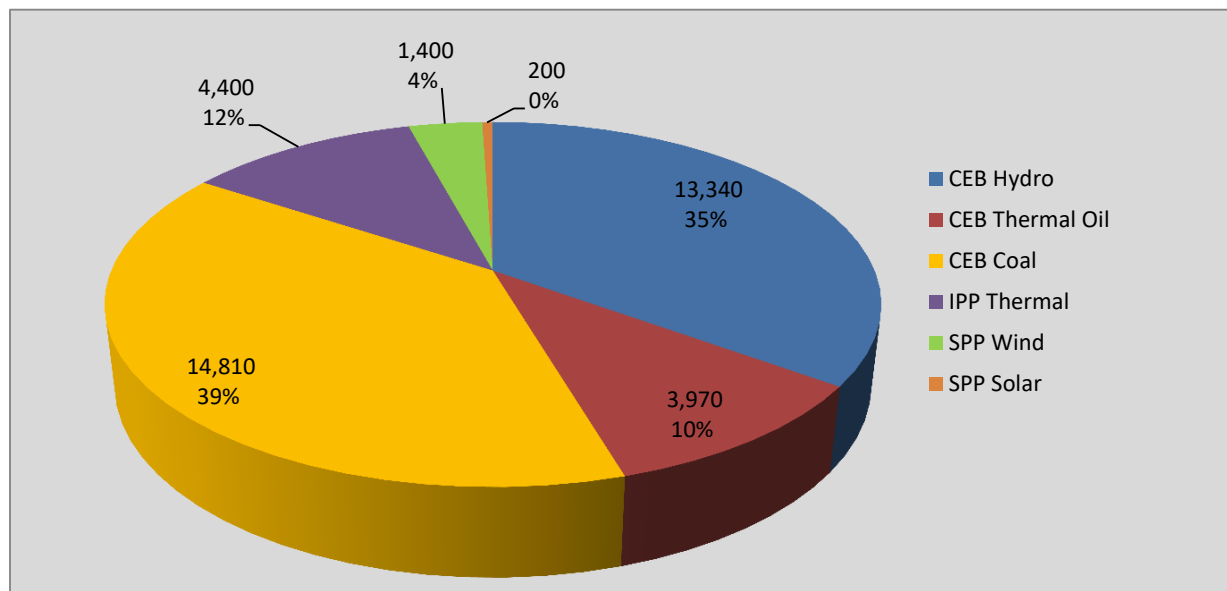
Generation and Reservoirs Statistics

September 7, 2020



PUBLIC UTILITIES COMMISSION OF SRI LANKA

Daily Generation Mix in MWh



Total Generation 38,120 MWh

Note: Generation from other SPPs (Mini Hydro and Biomass) is not included

Cumulative Dispatch

Note: Generation from other SPPs (Mini Hydro, small scale Solar and Biomass) is not included

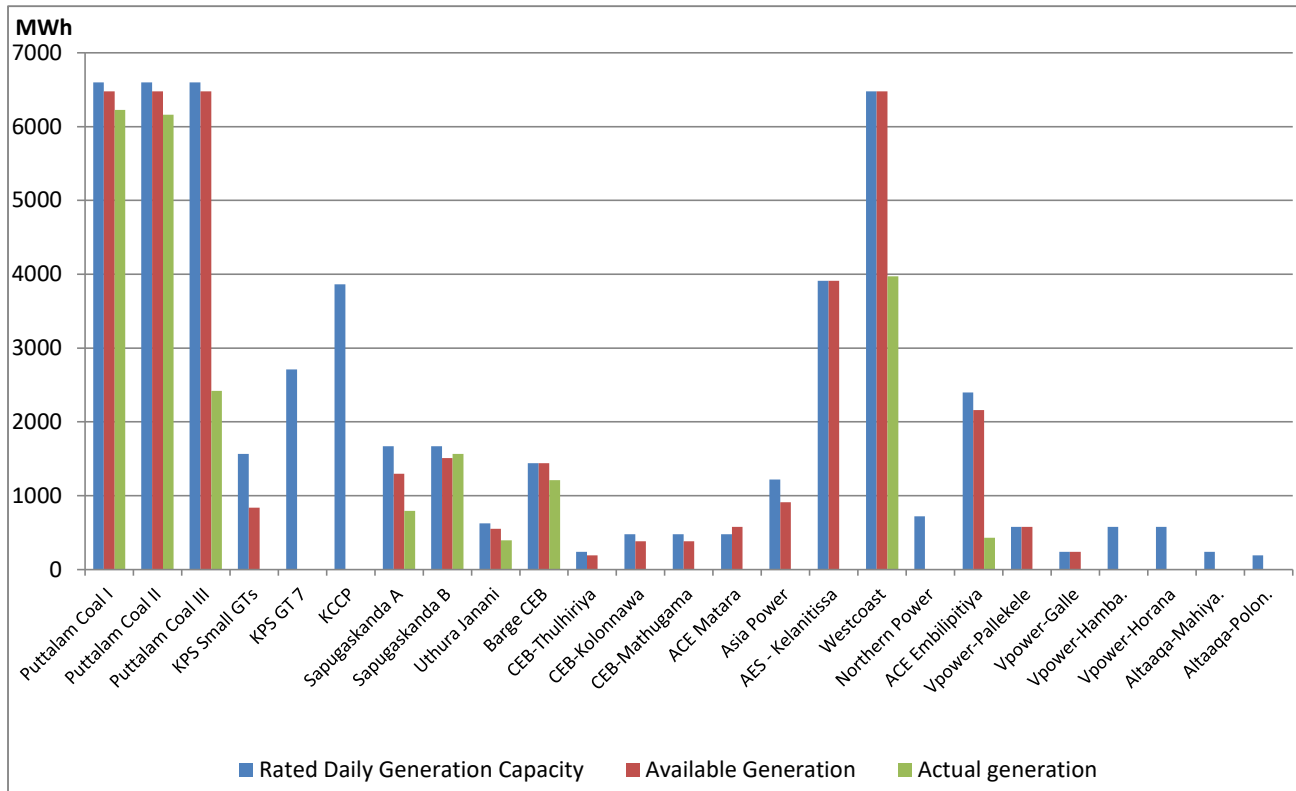
For Current Month

Category	Dispatch (GWh)	Percentage
CEB Hydro	77.3	28.34%
CEB Thermal Oil	27.5	10.08%
CEB Coal	100.3	36.77%
IPP Thermal	60.6	22.20%
SPP Wind	5.5	2.02%
SPP Solar	1.6	0.60%
Total	272.9	

For Current Year

Category	Dispatch (GWh)	Percentage
CEB Hydro	2,410.1	24.39%
CEB Thermal Oil	1,082.1	10.95%
CEB Coal	4,072.9	41.22%
IPP Thermal	2,024.2	20.49%
SPP Wind	221.7	2.24%
SPP Solar	70.0	0.71%
Total	9,880.8	

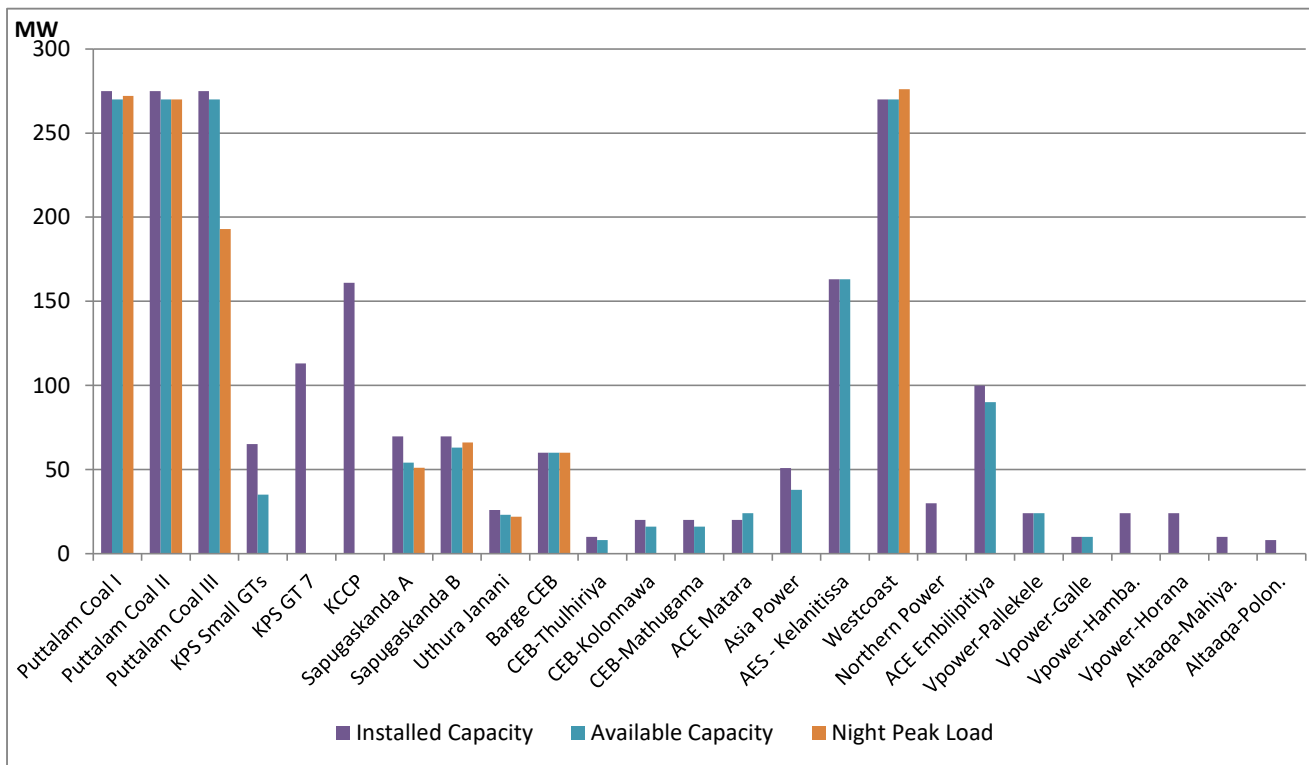
Thermal Plant Dispatch



Note- Available Generation is estimated based on plant availability at 6.00am on

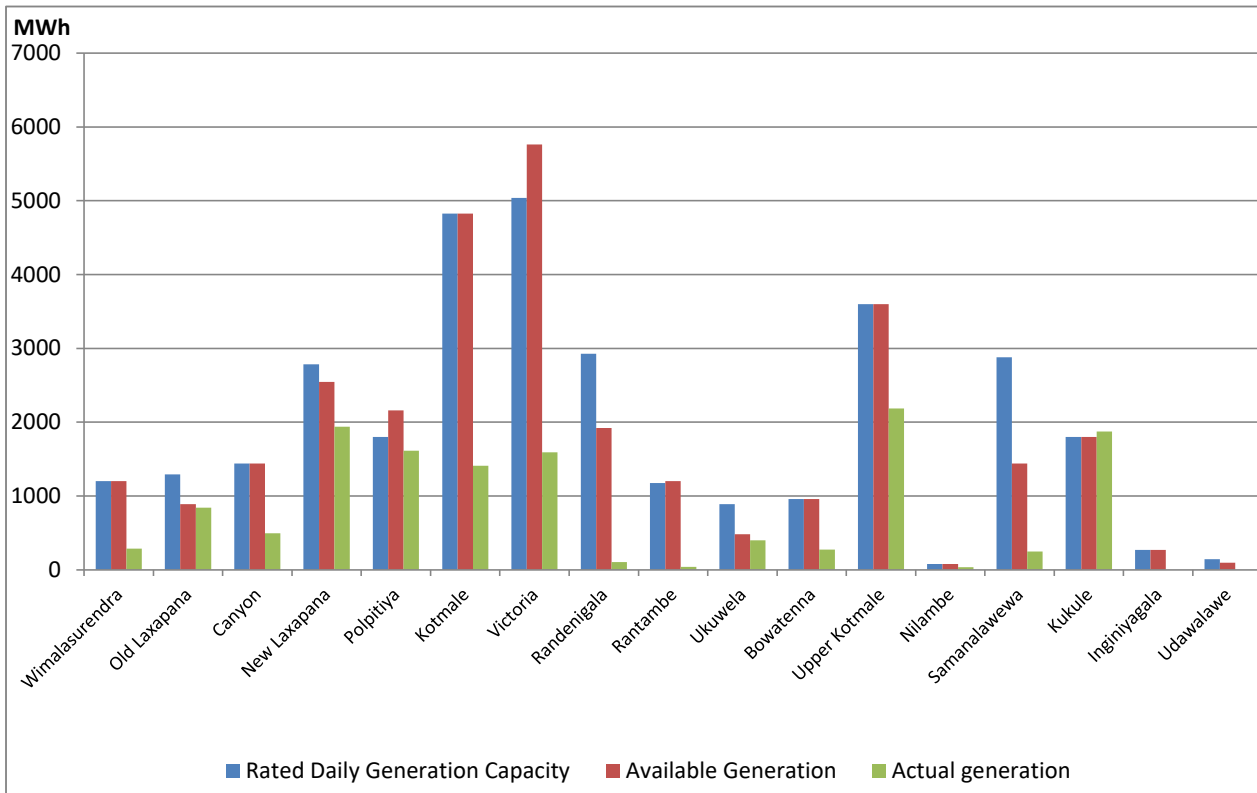
September 8, 2020

Thermal Plant Loading at the Night Peak



Note- Plant availability is recorded at 6.00 am on September 8, 2020

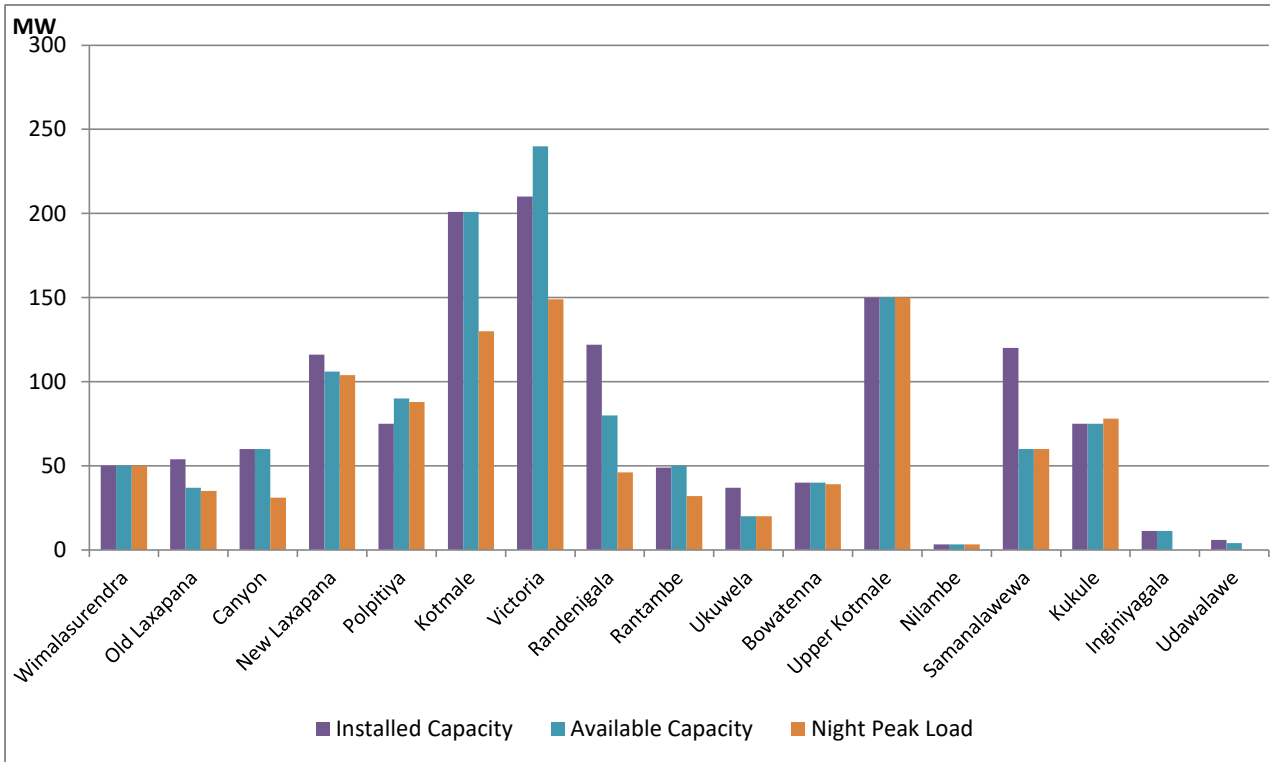
Major Hydro Plant Dispatch



Note- Available Generation is estimated based on plant availability at 6.00am on

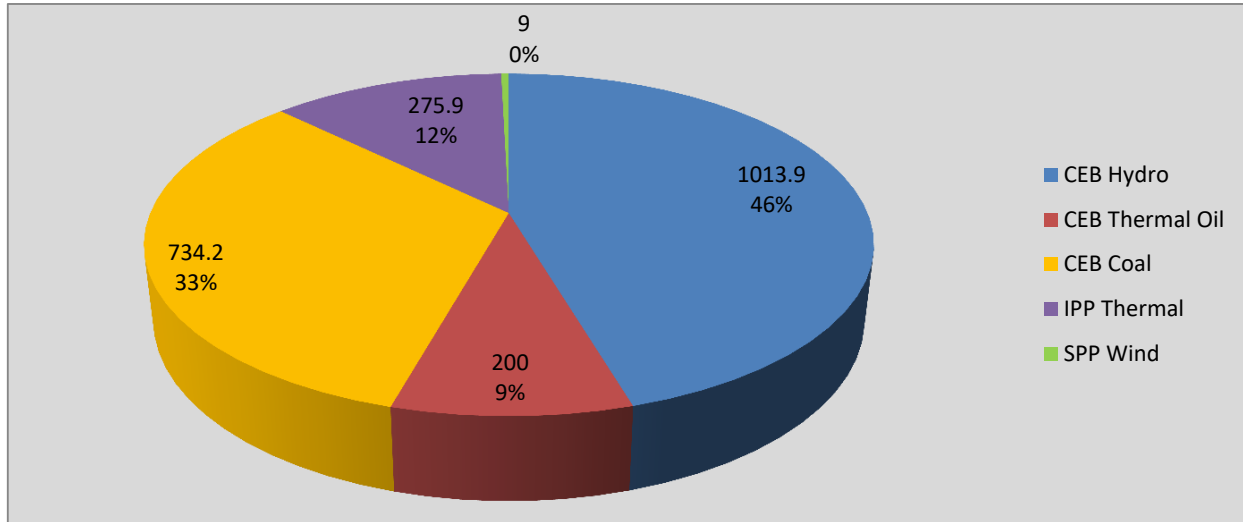
September 8, 2020

Major Hydro Plant Loading at Night Peak



Note- Plant availability is recorded at 6.00 am on September 8, 2020

Contribution to the Night Peak in MW



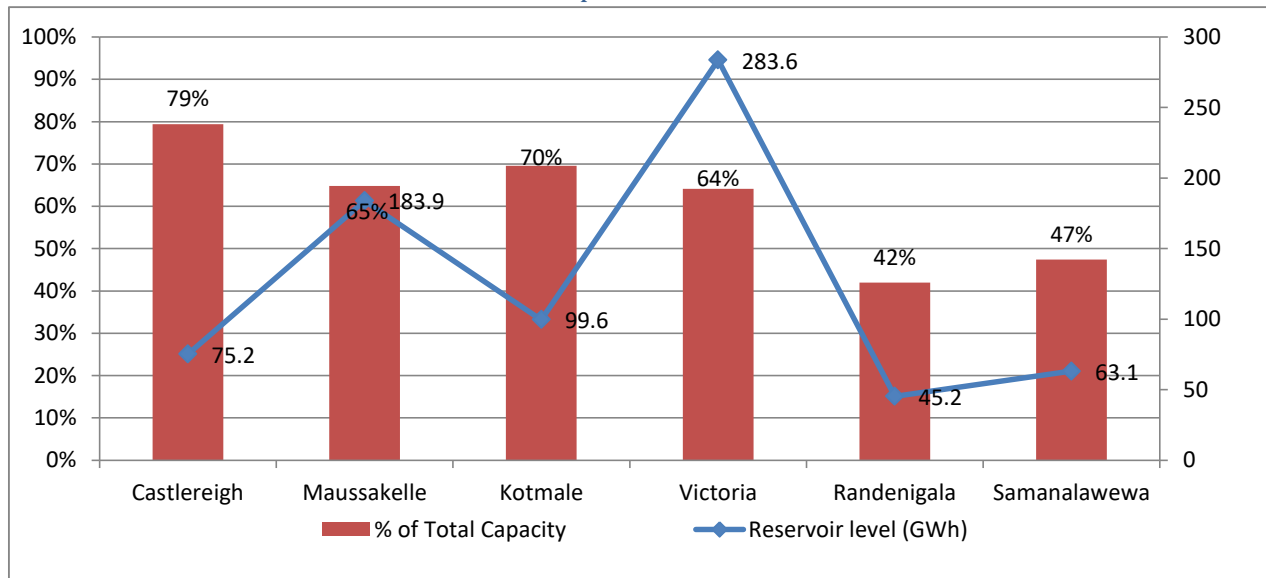
Night Peak*	2,233.0 MW
Day Peak	1,922.4 MW
Minimum Demand	891.7 MW

Notes: *The above chart pattern and night peak figure is presented excluding the contribution of Moragahakanda, other minihydro and biomass power plants from June 8 2020 onwards

**Day peak and Minimum demand includes the contribution from Moragahakanda, wind and solar plants

* in addition to the night peak figure presented above, Moragahakanda plant, other MiniHydro and Biomass Plants of installed capacity 181.00 MW has recorded total 77.00 MW at night peak

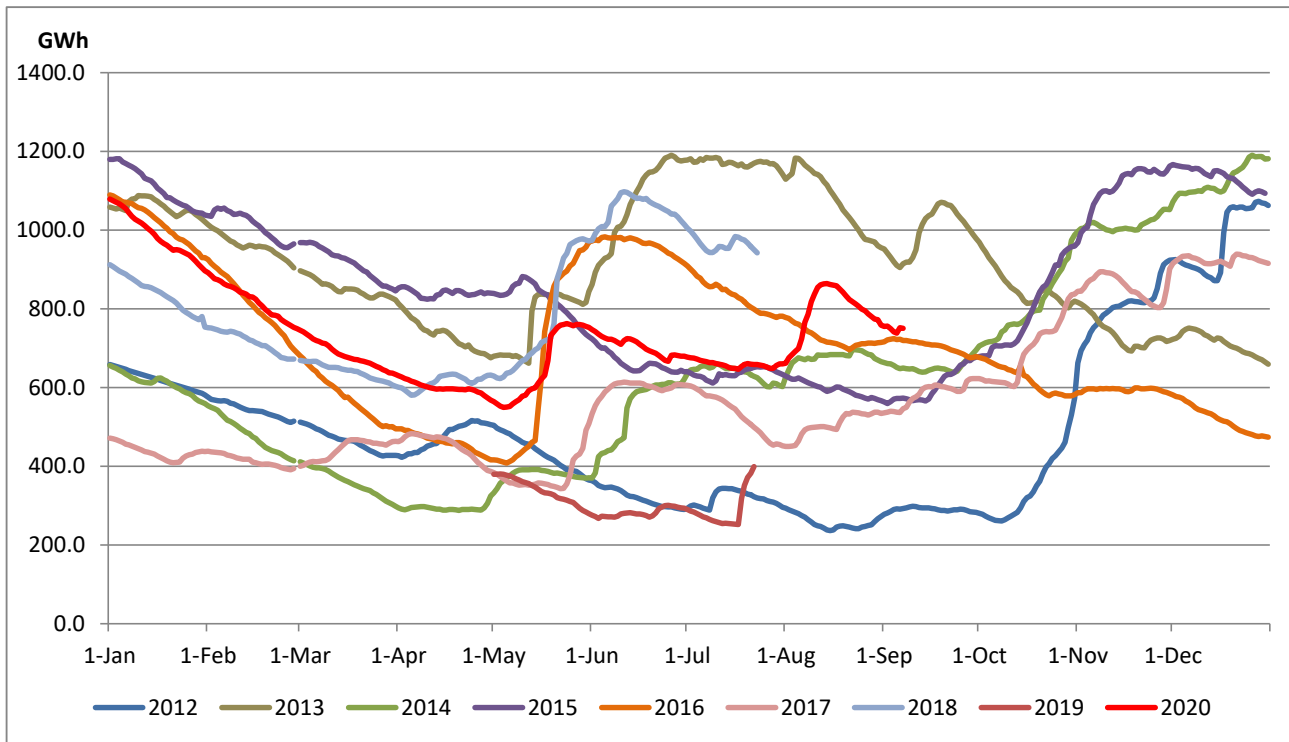
Reservoir Levels - as at 06.00 Hr on September 8, 2020



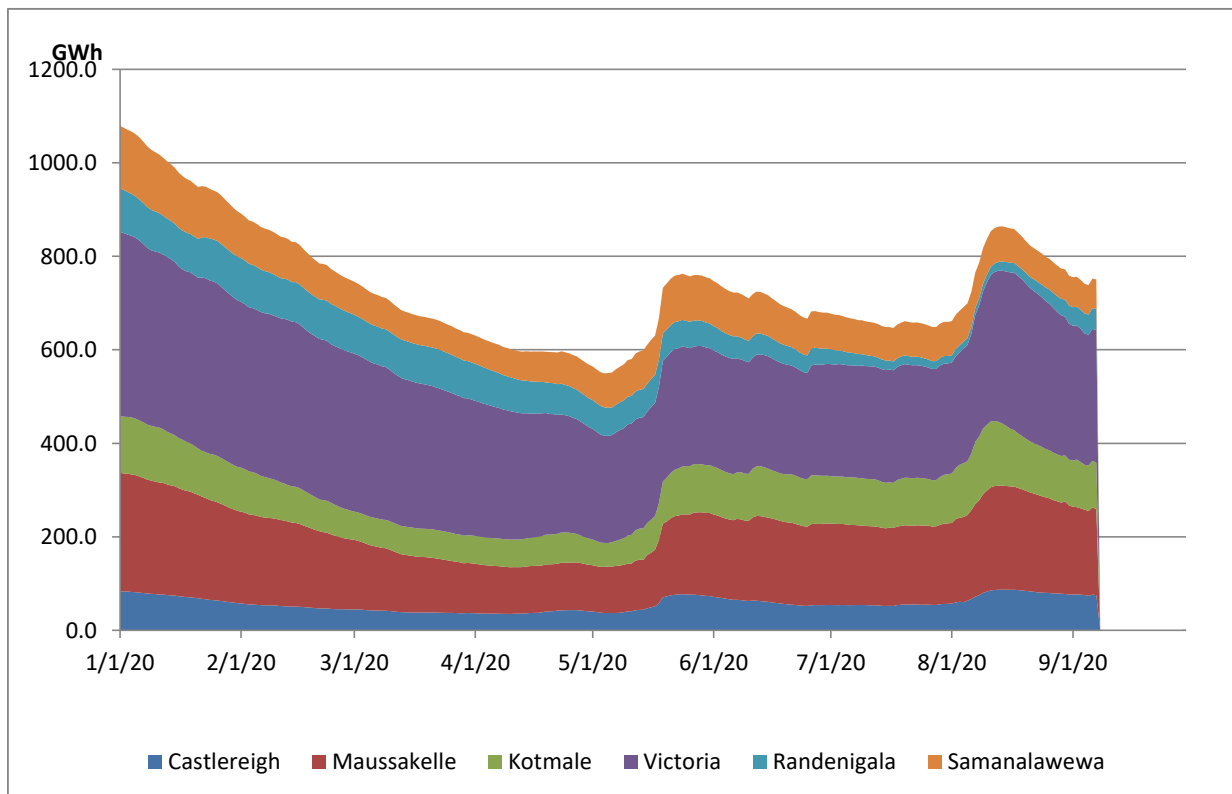
Total Reservoir Level(GWh)	750.6
% of Total capacity	62.3%

Comparison of Total Reservoir Storage Levels with Past Years

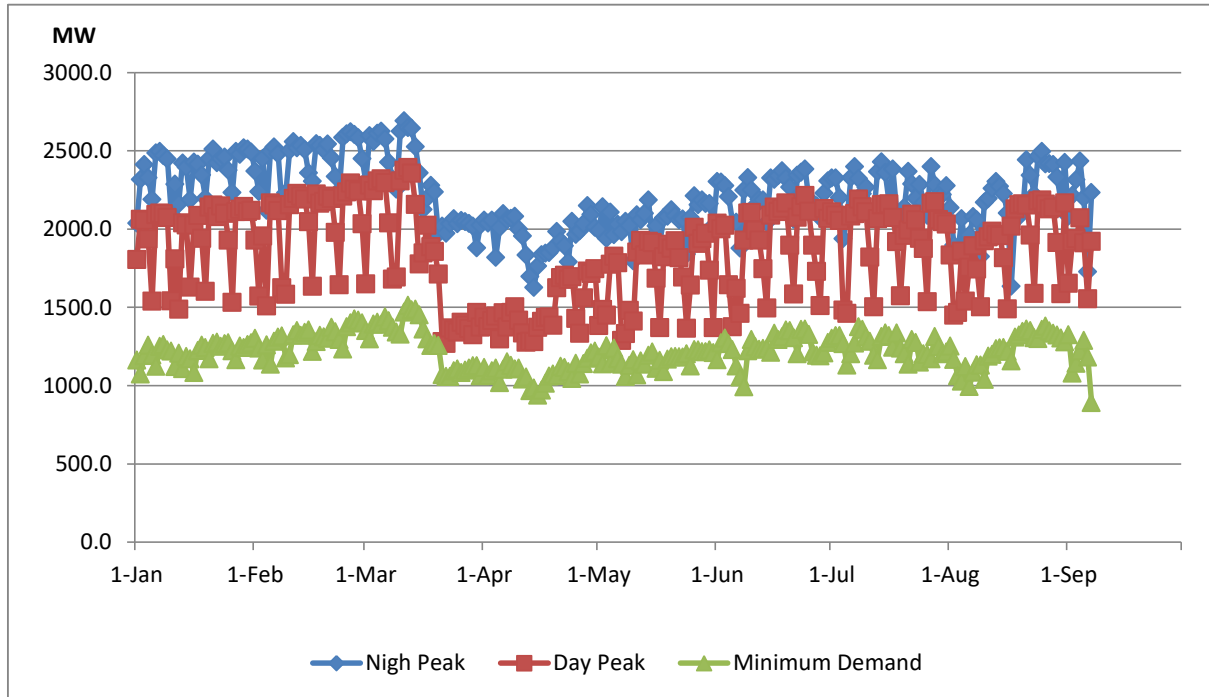
Data from June 2018 to March 2020 are not indicated in the graph



Variation of Major Hydro Reservoir Levels in the current year (GWh)



Variation of Demand during the current year

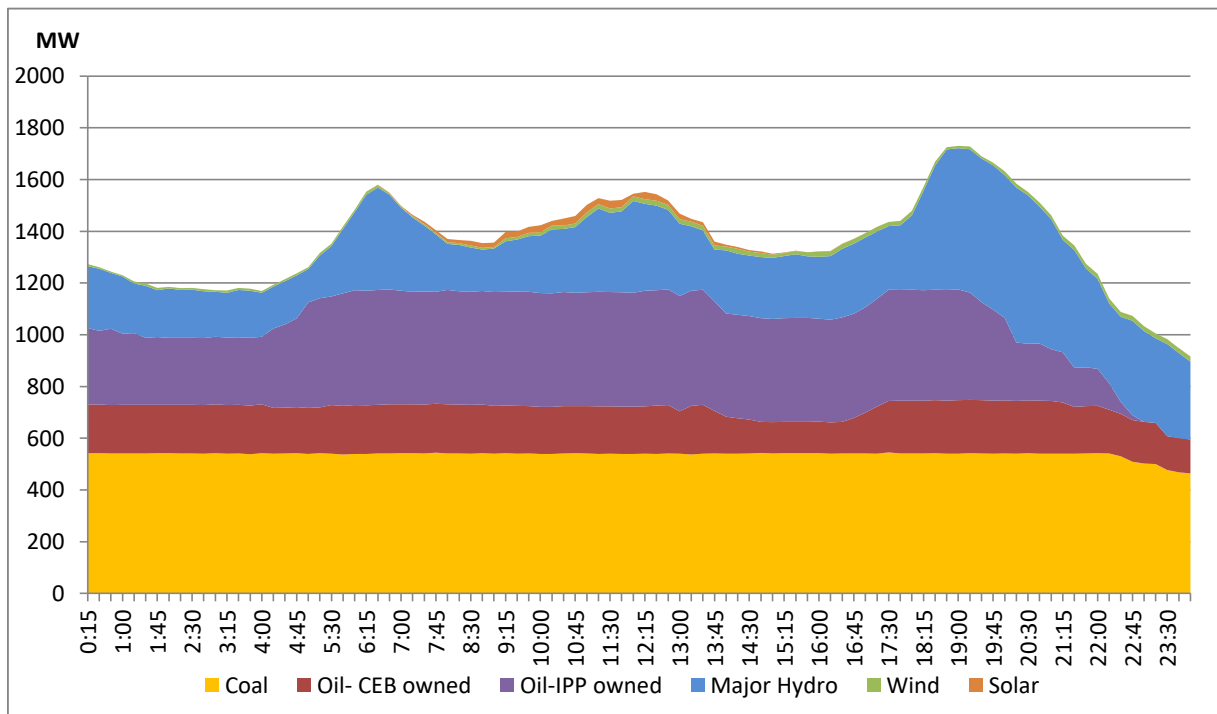


Notes: The night peak graph in the above chart is revised from June 8, 2020 to exclude the contribution from Mini hydro and biomass power plants
 Day peak and minimum demand graphs includes the contribution from Moragahakanda power plant
 All graphs include the contribution telemetered from solar and wind plants

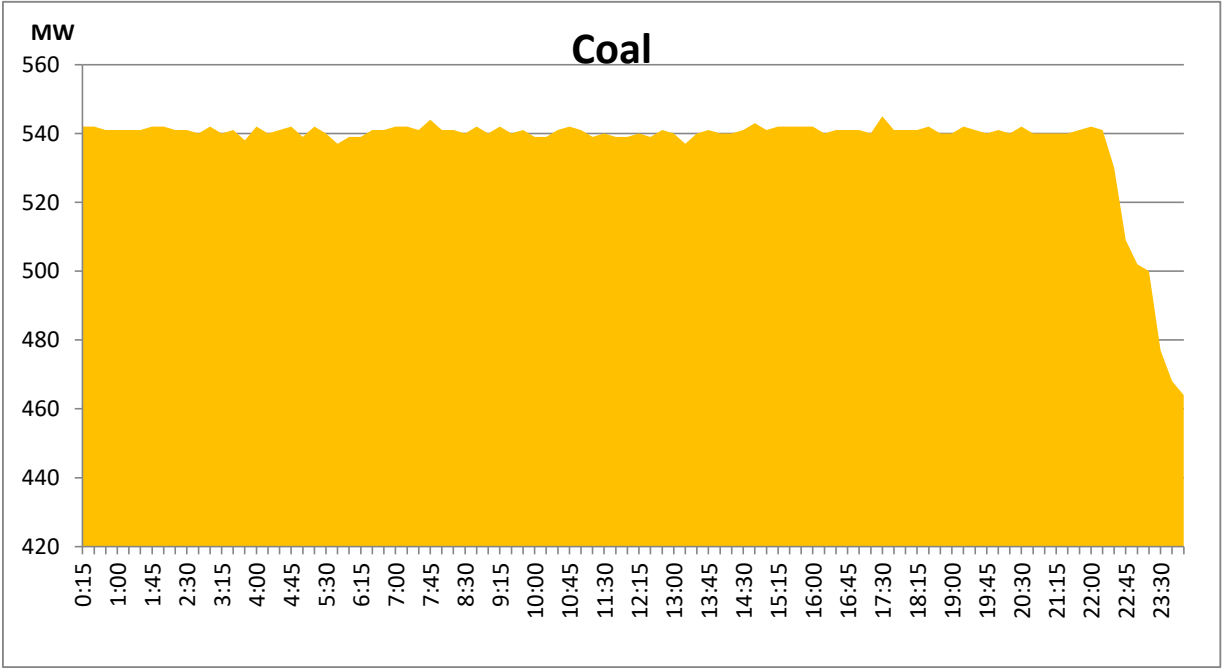
Daily Load Curve of the Previous day

September 6, 2020

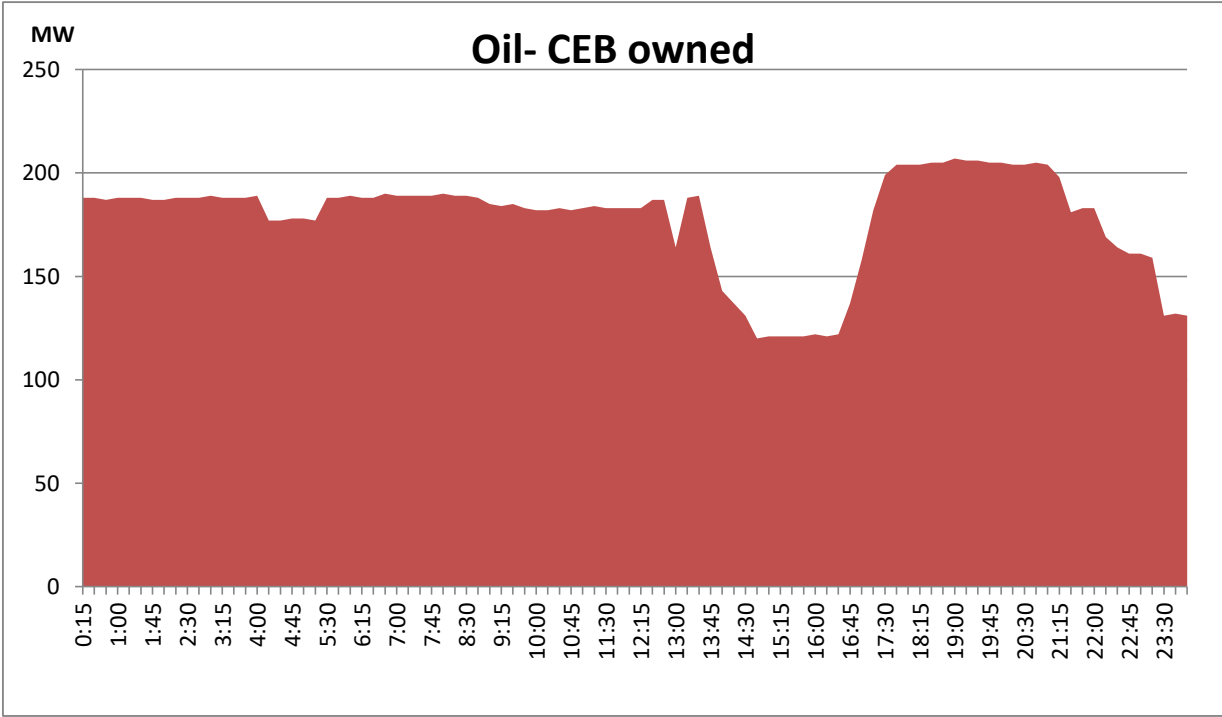
Solar and wind data is based on Telemetered Power Stations only



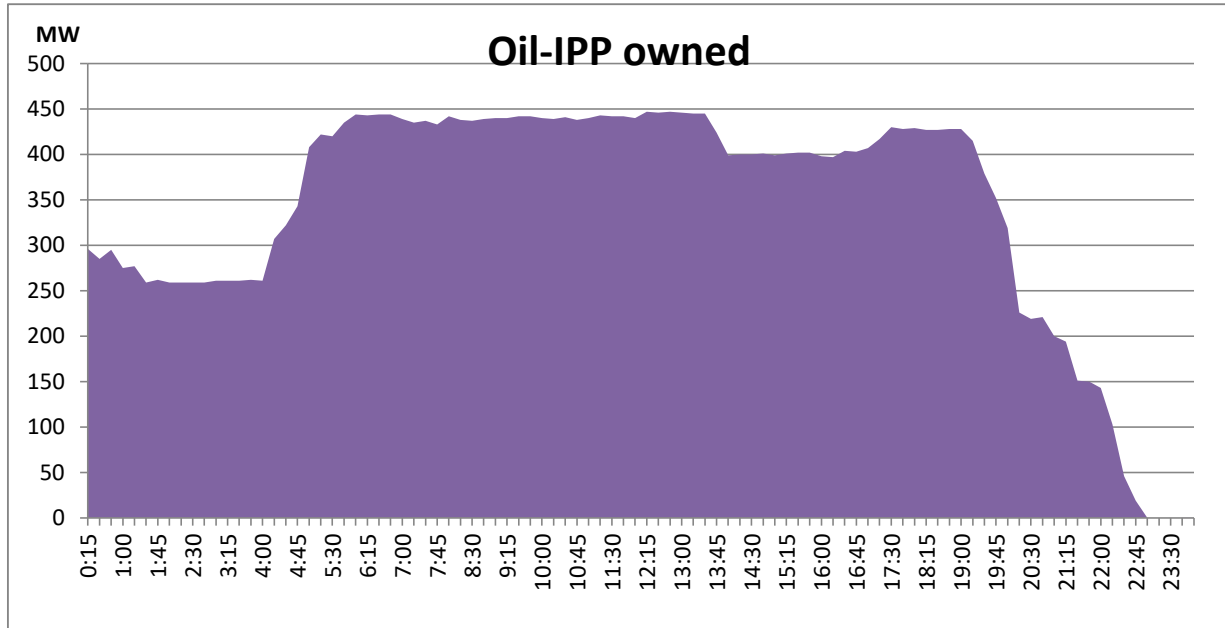
Coal Generation during the Previous day



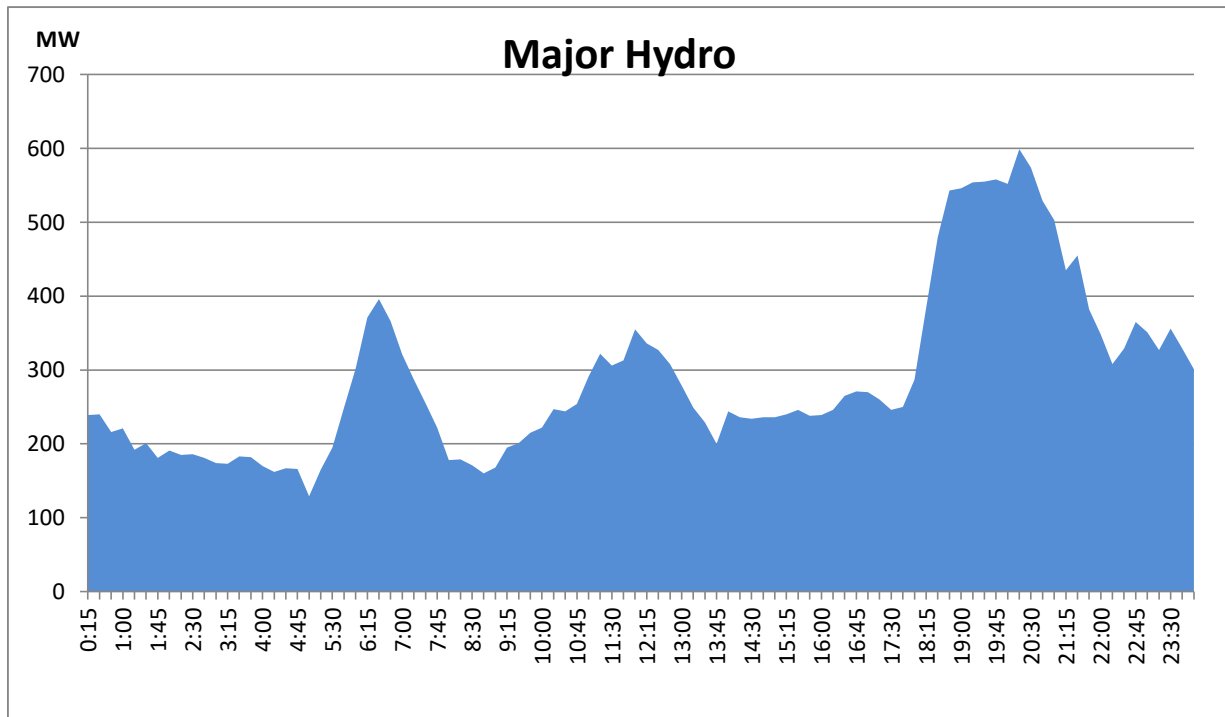
CEB Oil Plant Generation during the Previous day



IPP Oil Plant Generation during the Previous day

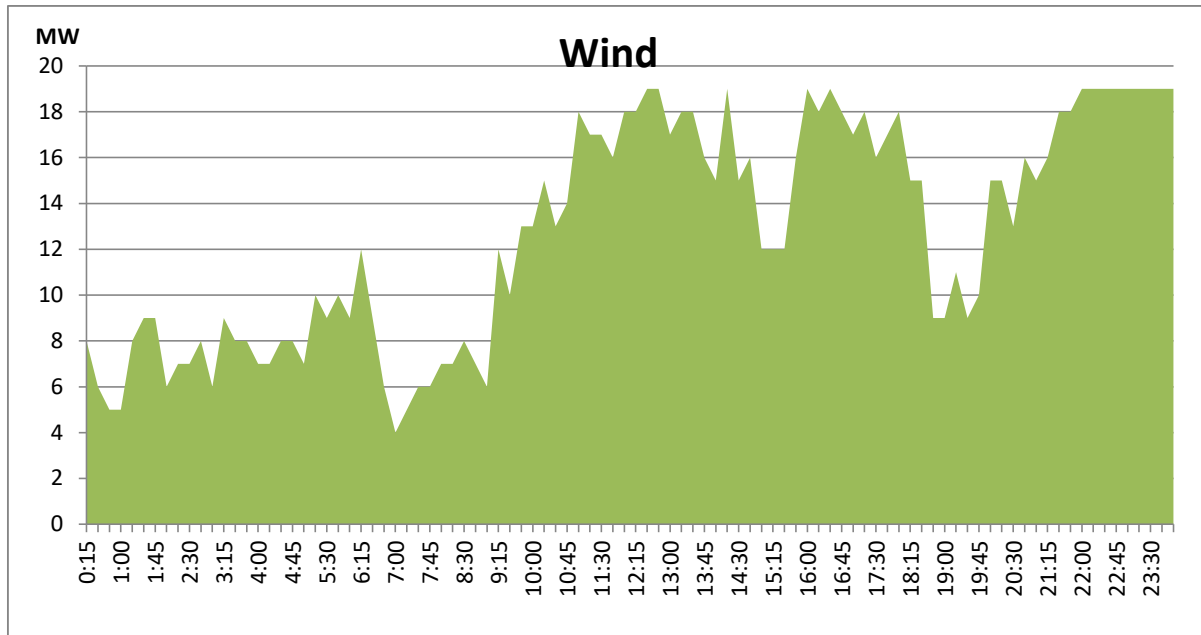


Major Hydro Generation during the Previous day



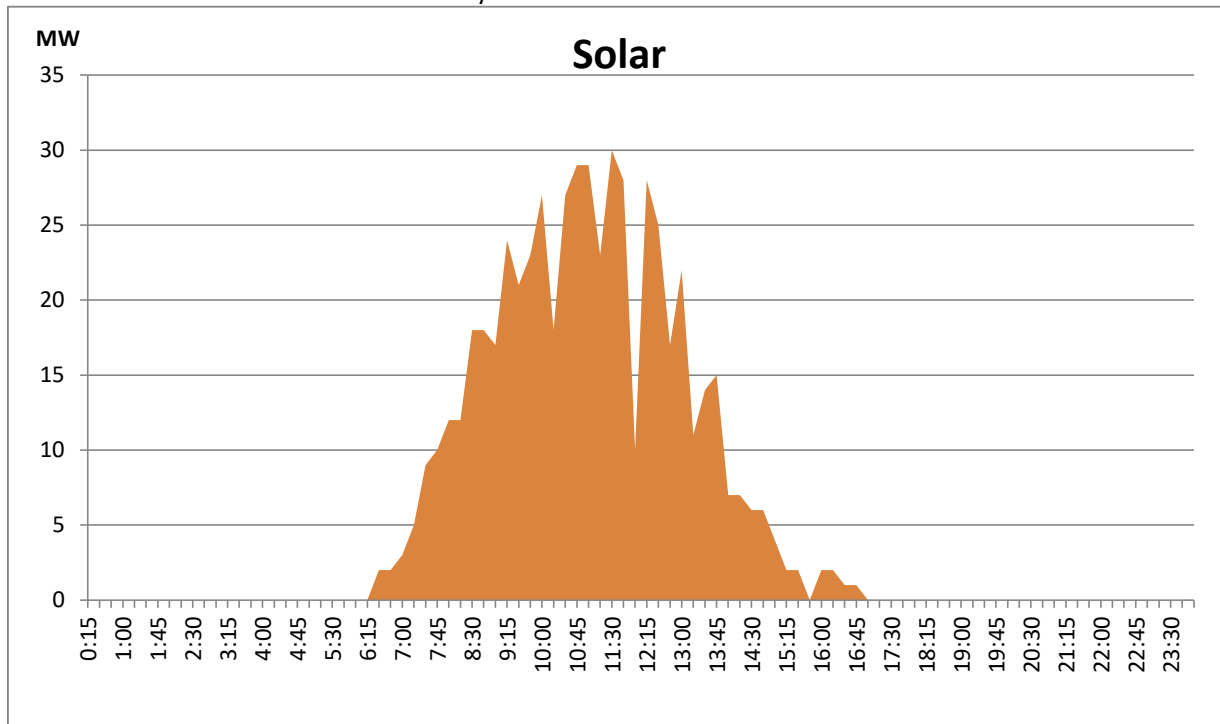
Wind Generation during the Previous day

Based on Telemetered Power Stations only



Solar Generation during the Previous day

Based on Telemetered Power Stations only



Plant	Installed Capacity (MW)	Plant Availability (MW)	Night peak Load (MW)	Plant Dispatch (GWh)
Wimalasurendra	50.00	50.00	50.00	288.00
Old Laxapana	53.80	37.00	35.00	841.00
Canyon	60.00	60.00	31.00	495.00
New Laxapana	116.00	106.00	104.00	1,939.00
Polpitiya	75.00	90.00	87.90	1,614.00
Kotmale	201.00	201.00	130.00	1,410.00
Victoria	210.00	240.00	149.00	1,592.00
Randenigala	122.00	80.00	46.00	107.00
Rantambe	49.00	50.00	32.00	41.00
Ukuwela	37.00	20.00	20.00	399.00
Bowatenna	40.00	40.00	39.00	274.00
Upper Kotmale	150.00	150.00	150.00	2,186.00
Nilambe	3.20	3.20	3.20	36.00
Samanalawewa	120.00	60.00	60.00	246.00
Kukule	75.00	75.00	78.10	1,874.00
Inginiyagala	11.25	11.25	-	-
Udawalawe	6.00	4.00	-	-
Puttalam Coal I	275.00	270.00	272.00	6,226.00
Puttalam Coal II	275.00	270.00	270.00	6,162.00
Puttalam Coal III	275.00	270.00	193.00	2,422.00
KPS Small GTs	65.20	35.00	-	-
KPS GT 7	113.00	-	-	-
KCCP	161.00	-	-	-
Sapugaskanda A	69.60	54.00	51.00	795.00
Sapugaskanda B	69.60	63.00	66.00	1,567.00
Uthura Janani	26.01	23.00	22.00	395.00
Barge CEB	60.00	60.00	60.00	1,212.00
CEB-Thulhiriya	10.00	8.00	-	-
CEB-Kolonnawa	20.00	16.00	-	-
CEB-Mathugama	20.00	16.00	-	-
ACE Matara	20.00	24.00	-	-
Asia Power	50.80	38.00	-	-
AES - Kelanitissa	163.00	163.00	-	-
Westcoast	270.00	270.00	276.00	3,971.00
Northern Power	30.00	-	-	-
ACE Embilipitiya	100.00	90.00	-	432.00
Vpower-Pallekele	24.00	24.00	-	-
Vpower-Galle	10.00	10.00	-	-
Vpower-Hamba.	24.00	-	-	-
Vpower-Horana	24.00	-	-	-
Altaaqa-Mahiya.	10.00	-	-	-
Altaaqa-Polon.	8.00	-	-	-
Solar	58.00		-	201.00
Wind	128.00		9.00	1,400.00
MH and BM	394.00		77.00	Not available
	3,552.46	2,981.45		

Night peak load of MH and BM only include loading of Mini-hydro plants of total capacity MW 181
Instaled capacity of Solar, wind, Mini-hydro and Biomass plants are as of end of December 2019
Plant availability is the availability recorded at 6 am on September 8, 2020

Major Incidents during the day

- 1) Kukule spilling stopped at 13:24 hrs.
- 2) Kegalle-Thul both ccts tripped from Kegalle end at 10:20 hrs and restored 10:36 hrs.
- 3) S'Japura T/F 01 and 02 tripped at 21:33 hrs with feeder 03.T/F s energized at 21:53 hrs and feeder 03 yet to be

Thermal Plant Fuel types

Power Station	Primary Fuel
CEB Thermal	
Sapugaskanda 1	Heavy Fuel
Sapugaskanda 2	Heavy Fuel
Kelanitissa Small Gas Turbines	Auto Diesel
GT 7 - Kelanitissa	Auto Diesel
Kelanitissa CCY	Naptha & Diesel
Lakvijaya 1	Coal
Lakvijaya 2	Coal
Lakvijaya 3	Coal
Uthuru Janani	Heavy Fuel
Barge CEB	Furnace Oil

Power Station	Primary Fuel
Private Thermal	
Asia Power	Heavy Fuel
Sojitz -	Auto Diesel
West Coast	Low Sulphur Furnace oil
ACE Embilipitiya	Furnace Oil