

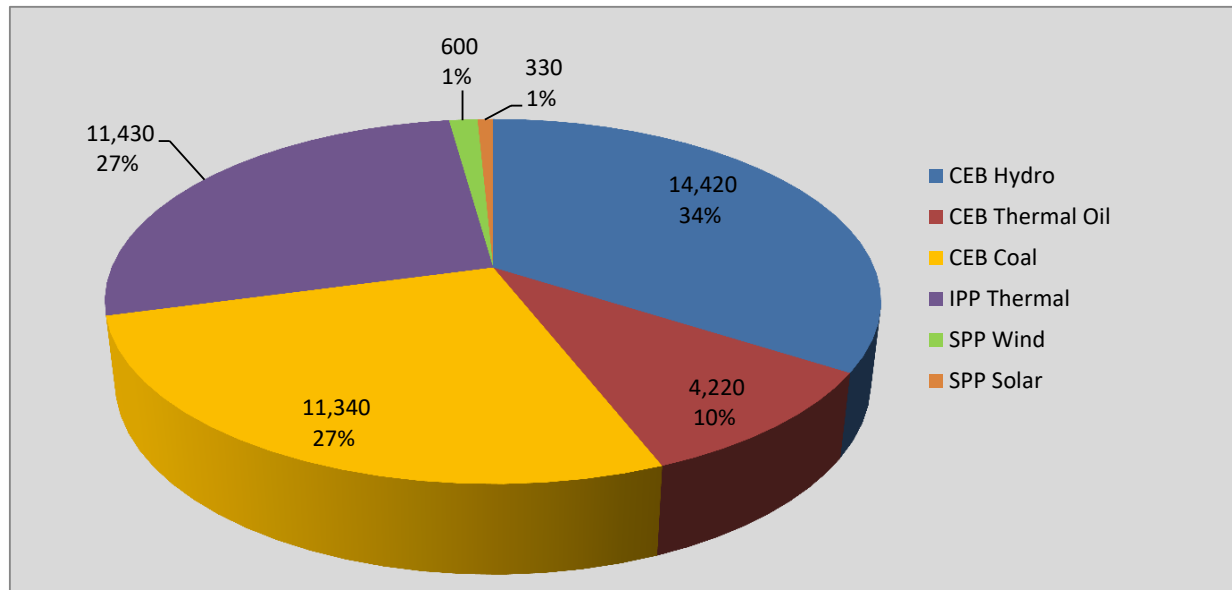
# **Generation and Reservoirs Statistics**

**August 24, 2020**



PUBLIC UTILITIES COMMISSION OF SRI LANKA

## Daily Generation Mix in MWh



**Total Generation 42,330 MWh**

Note: Generation from other SPPs (Mini Hydro and Biomass) is not included

## Cumulative Dispatch

Note: Generation from other SPPs (Mini Hydro, small scale Solar and Biomass) is not included

### For Current Month

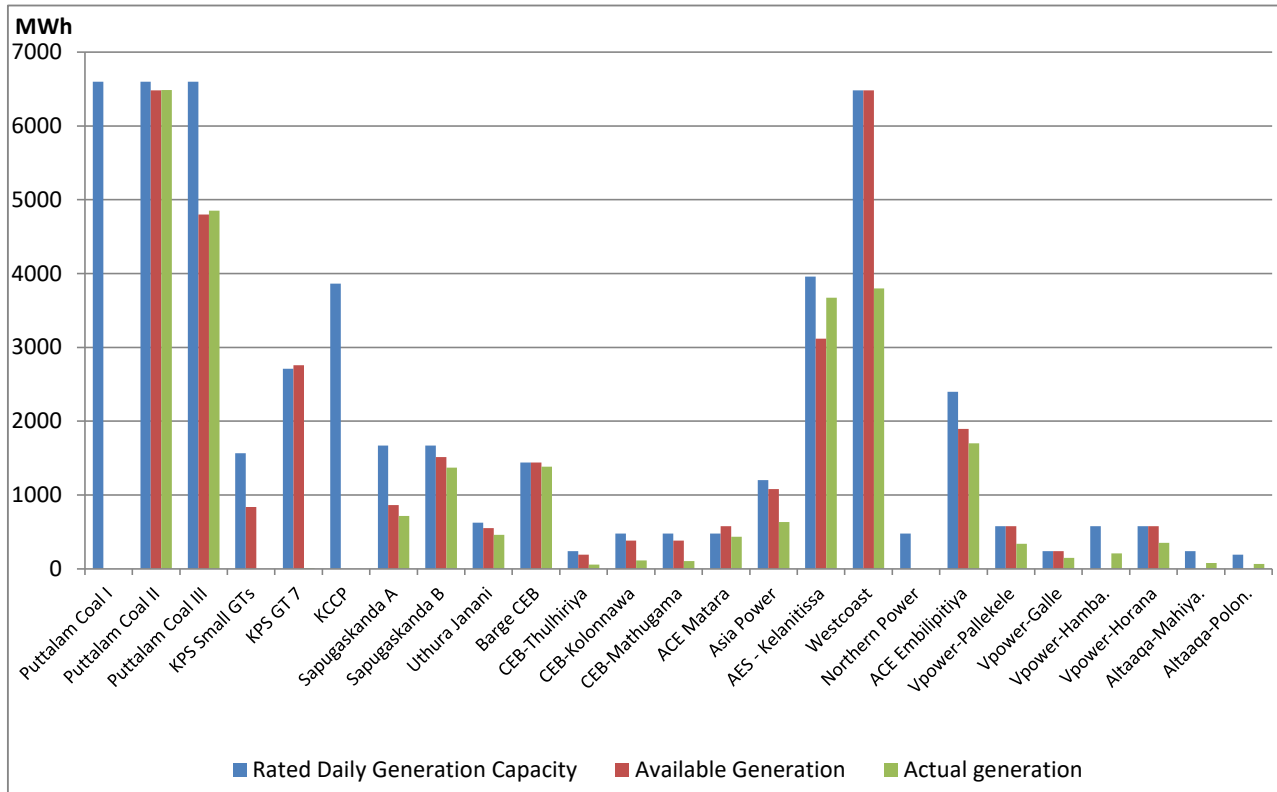
Category	Dispatch (GWh)	
CEB Hydro	369.5	40.09%
CEB Thermal Oil	78.0	8.46%
CEB Coal	324.1	35.16%
IPP Thermal	115.1	12.48%
SPP Wind	28.3	3.07%
SPP Solar	6.7	0.73%
<b>Total</b>	<b>921.7</b>	

### For Current Year

Category	Dispatch (GWh)	
CEB Hydro	2,232.3	24.00%
CEB Thermal Oil	1,025.3	11.02%
CEB Coal	3,893.5	41.86%
IPP Thermal	1,873.8	20.15%
SPP Wind	210.2	2.26%
SPP Solar	66.5	0.71%
<b>Total</b>	<b>9,301.4</b>	

## Thermal Plant Dispatch on

August 24, 2020

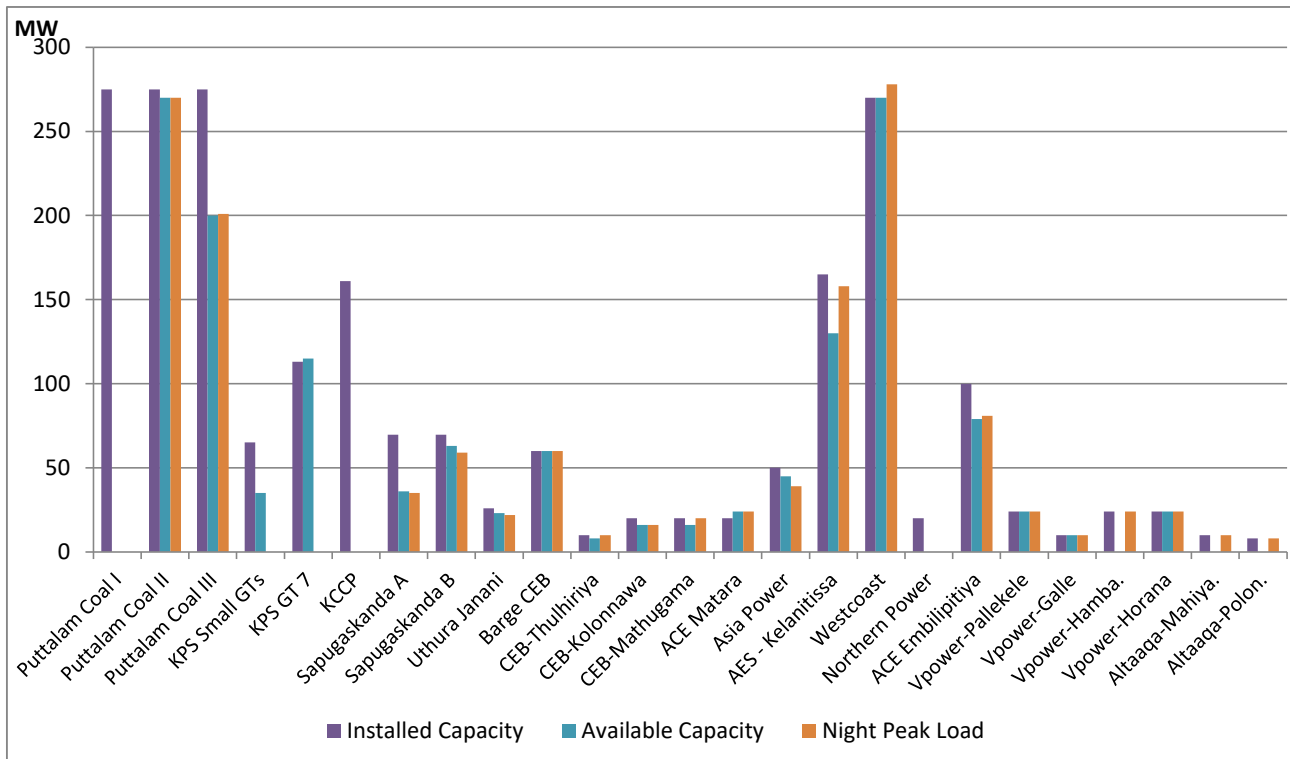


Note- Available Generation is estimated based on plant availability at 6.00am on

August 25, 2020

## Thermal Plant Loading at Night Peak on

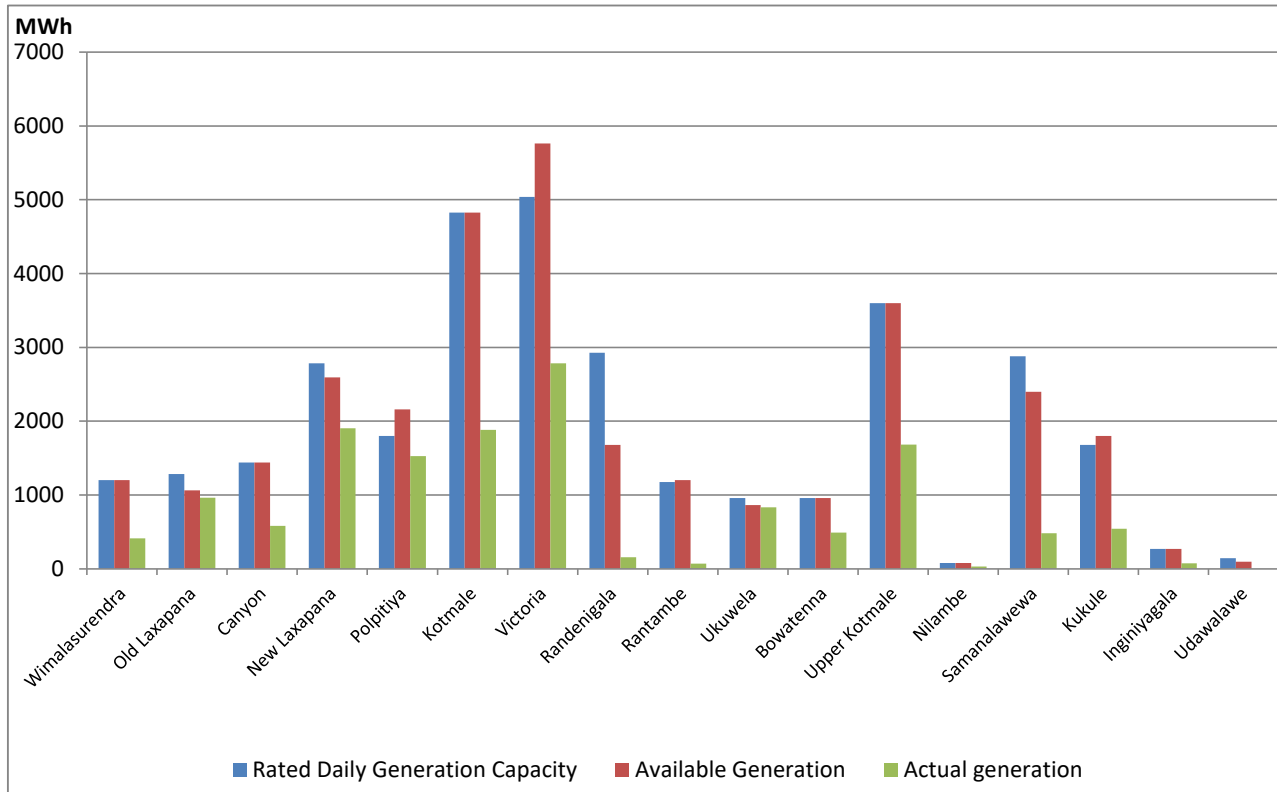
August 24, 2020



Note- Plant availability is recorded at 6.00 am on August 25, 2020

## Major Hydro Plant Dispatch on

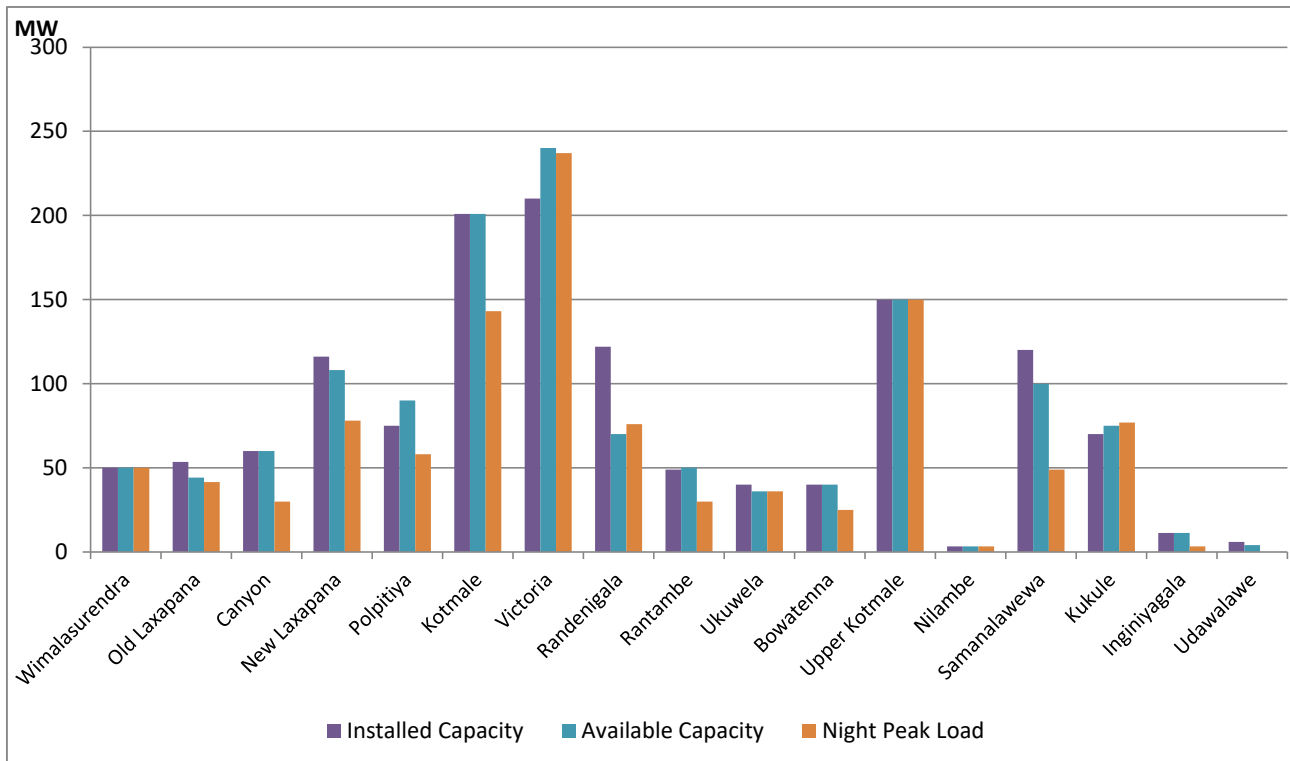
August 24, 2020



Note- Available Generation is estimated based on plant availability at 6.00am on August 25, 2020

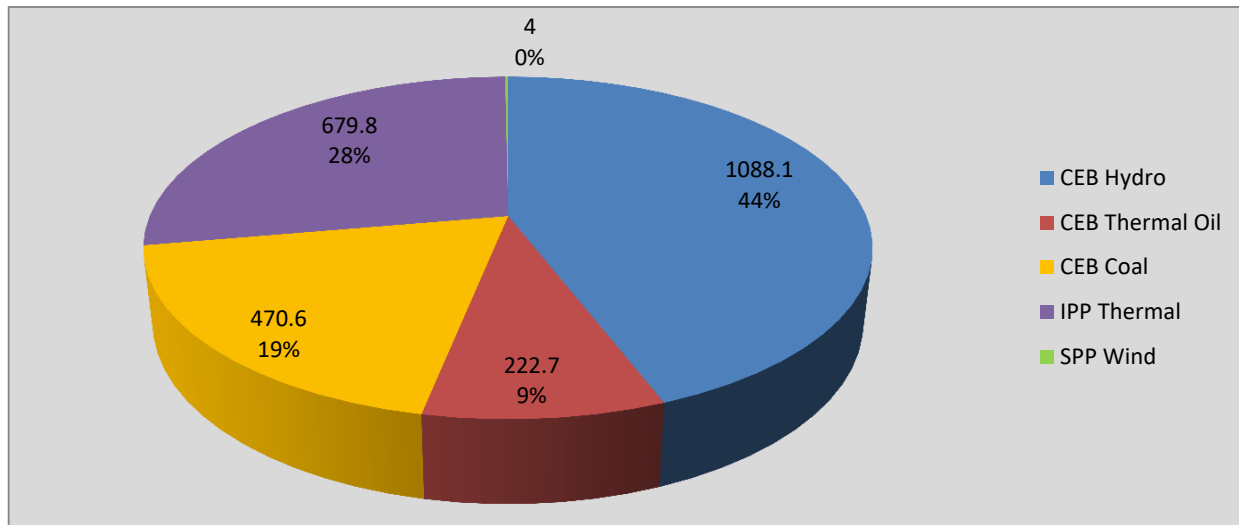
## Major Hydro Plant Loading at Night Peak on

August 24, 2020



Note- Plant availability is recorded at 6.00 am on August 25, 2020

## Contribution to the Night Peak in MW



Night Peak*	2,465.2 MW
Day Peak	2,180.8 MW
Minimum Demand	1,300.3 MW

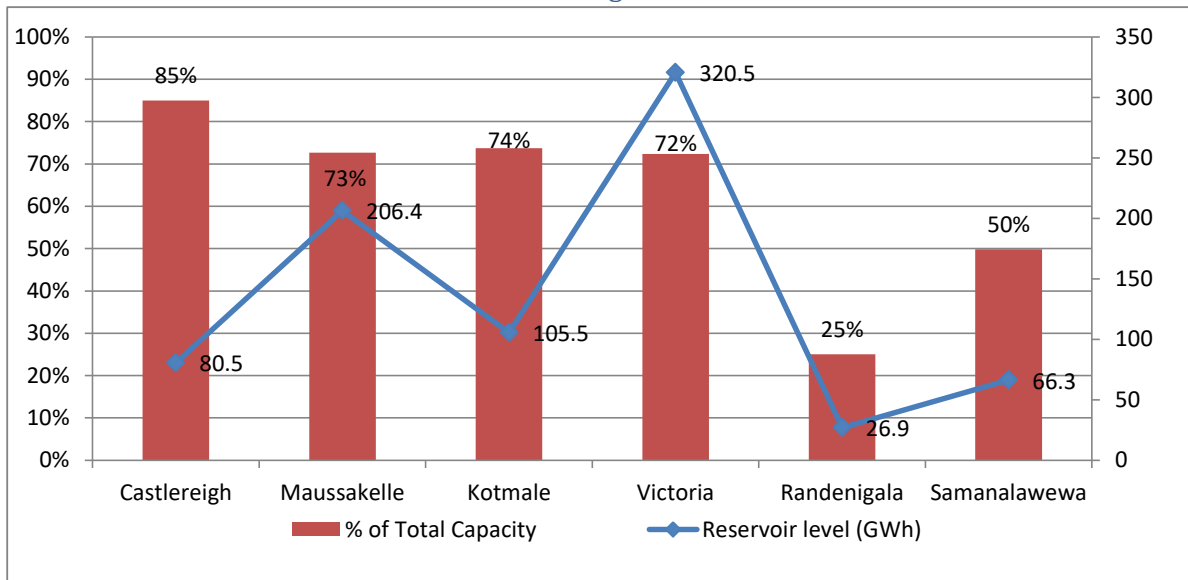
Notes:

\*The above chart pattern and night peak figure is presented excluding the contribution of Moragahakanda, other mini hydro and biomass power plants from June 8 2020 onwards

\*\*Day peak and Minimum demand includes the contribution from Moragahakanda, wind and solar plants

\* in addition to the night peak figure presented above, Moragahakanda plant, other MiniHydro and Biomass Plants of installed capacity 209.00 MW has recorded total 68.70 MW at the night peak

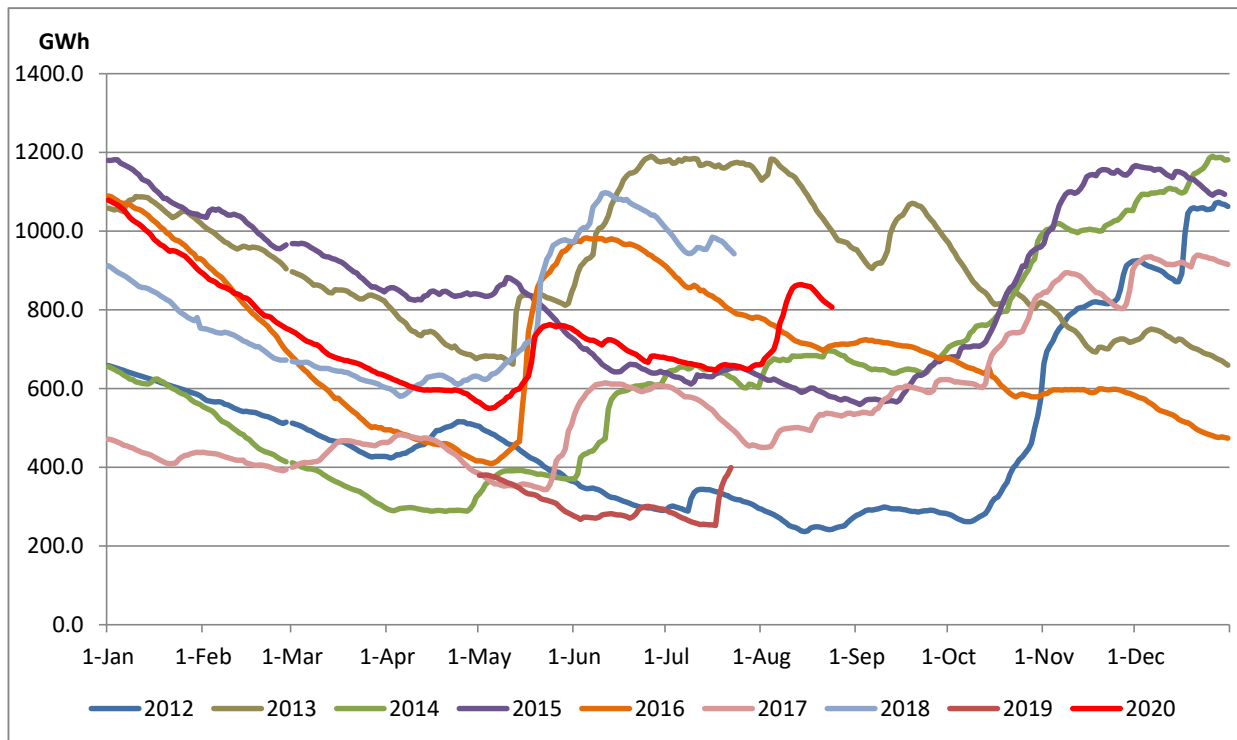
## Reservoir Levels - as at 06.00 Hr on August 25, 2020



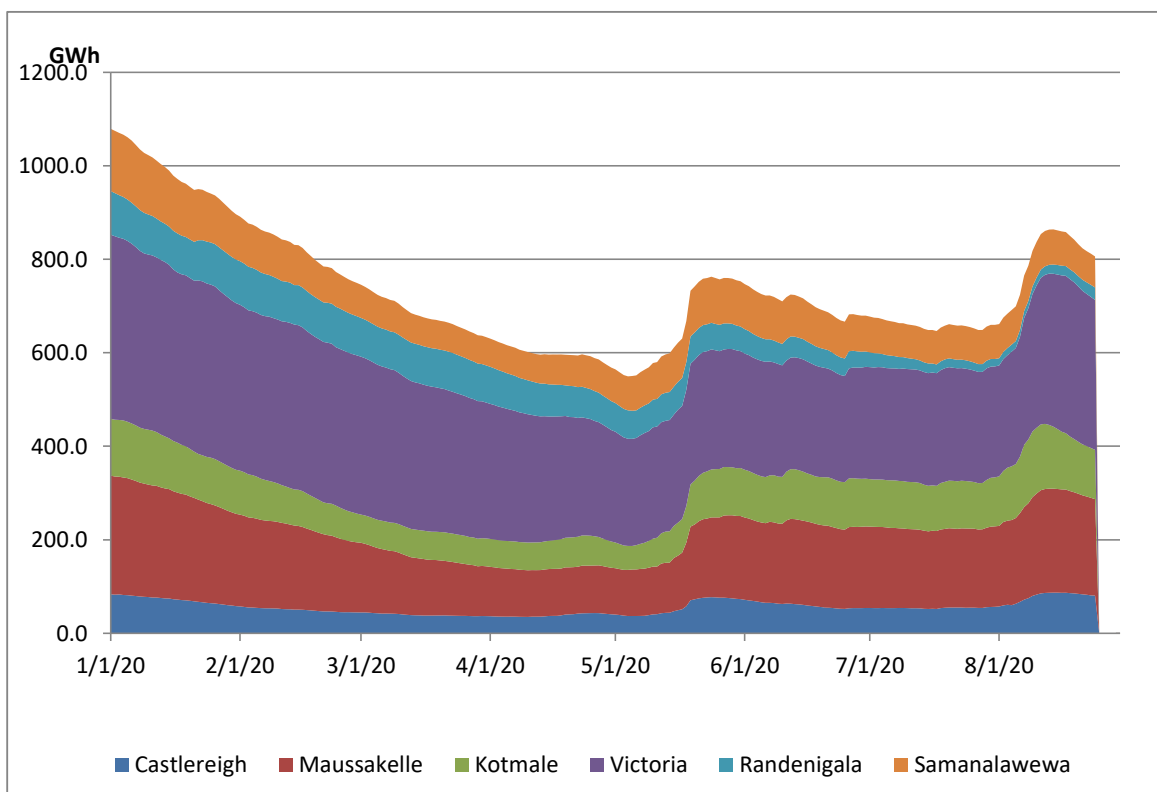
Total Reservoir Level(GWh)	806.1
% of Total capacity	66.9%

## Comparison of Total Reservoir Storage Levels with Past Years

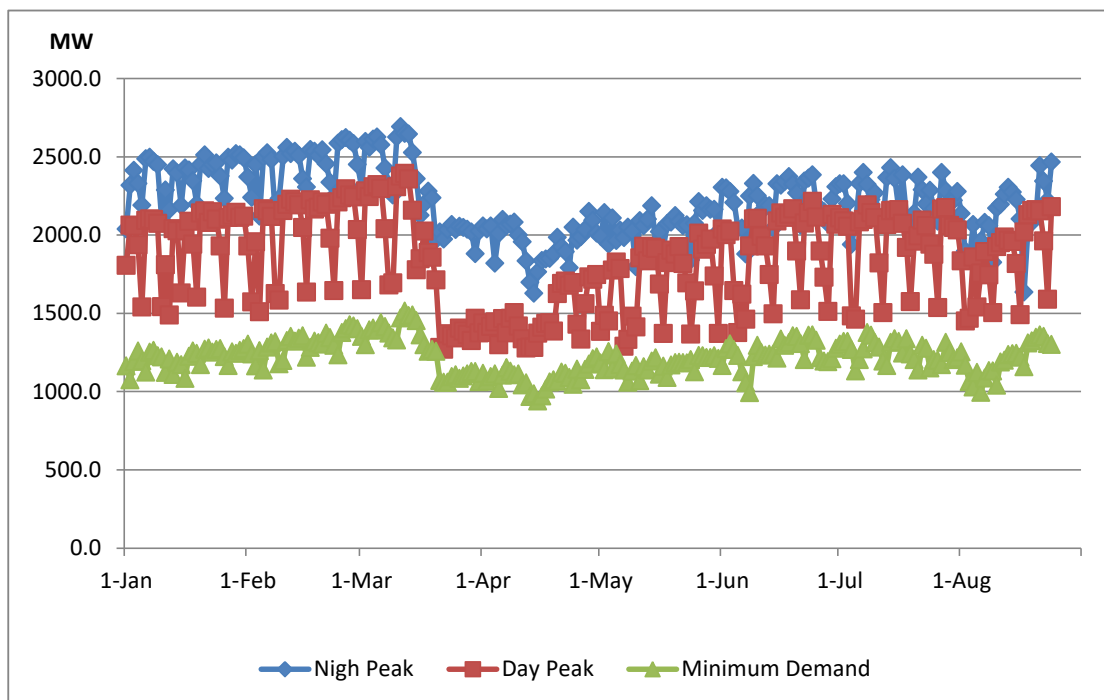
Data from June 2018 to March 2020 are not indicated in the graph



## Variation of Major Hydro Reservoir Levels in the current year (GWh)



## Variation of Demand during the current year



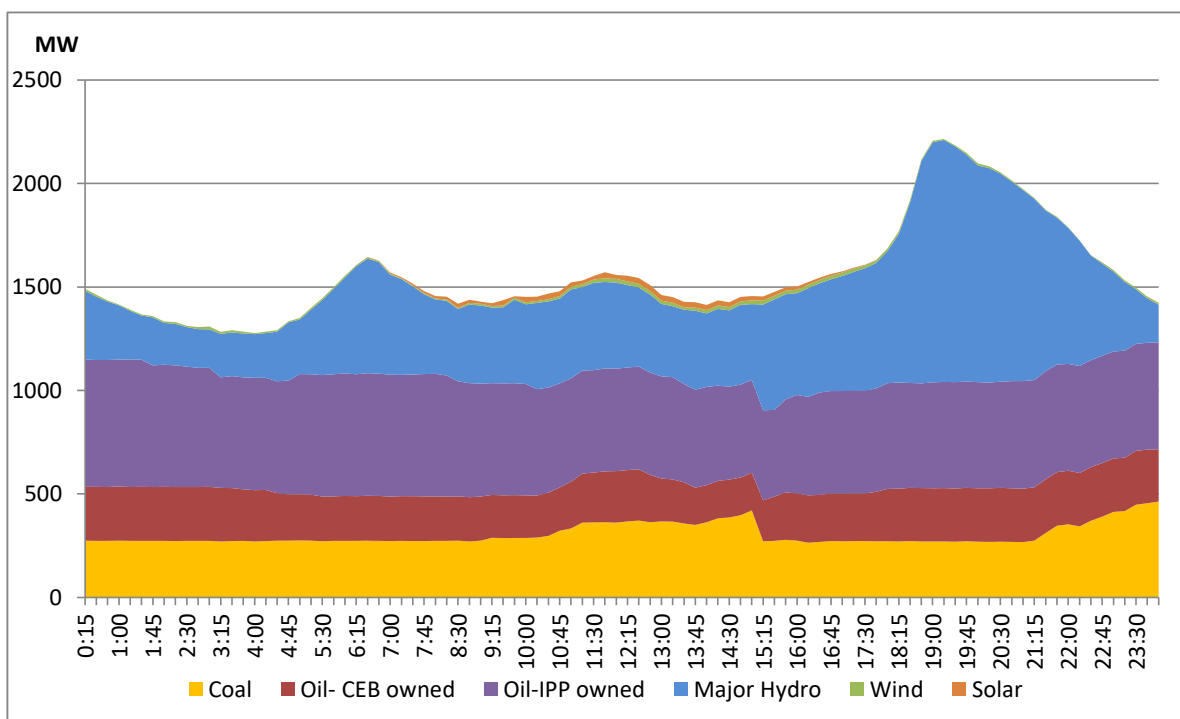
Notes: The night peak graph in the above chart is revised from June 8, 2020 to exclude the contribution from Mini hydro and biomass power plants contribution

Day peak and minimum demand graphs includes the contribution from Moragahakanda power plant

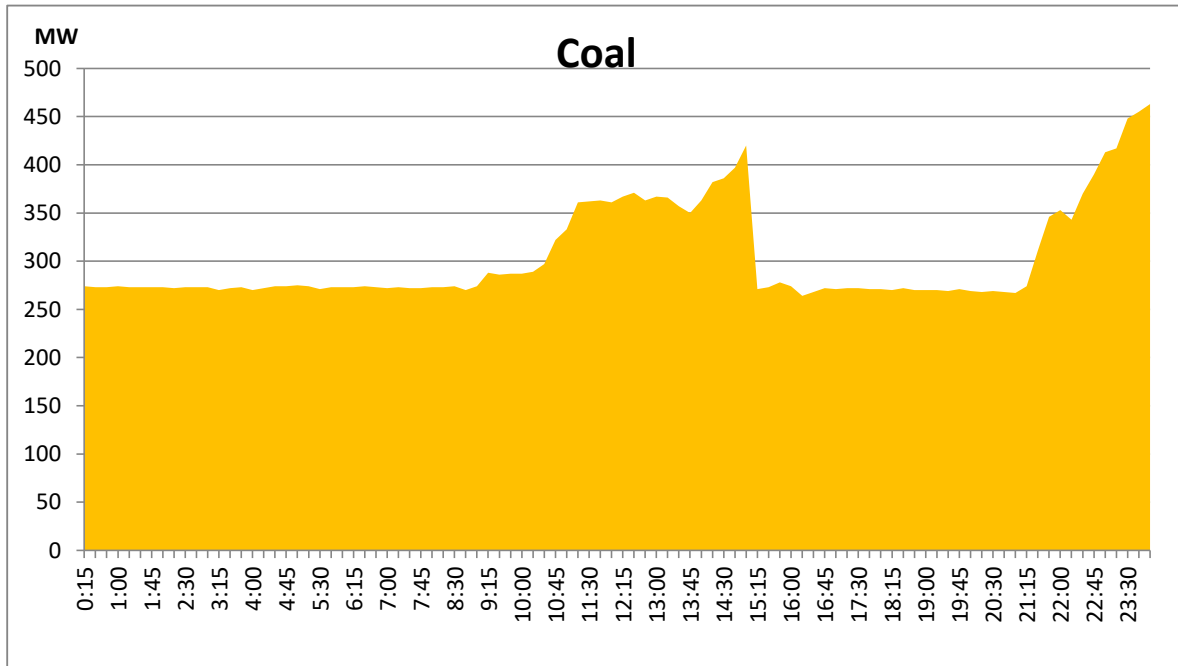
All graphs include the contribution telemetered from solar and wind plants

## Daily Load Curve - August 23, 2020

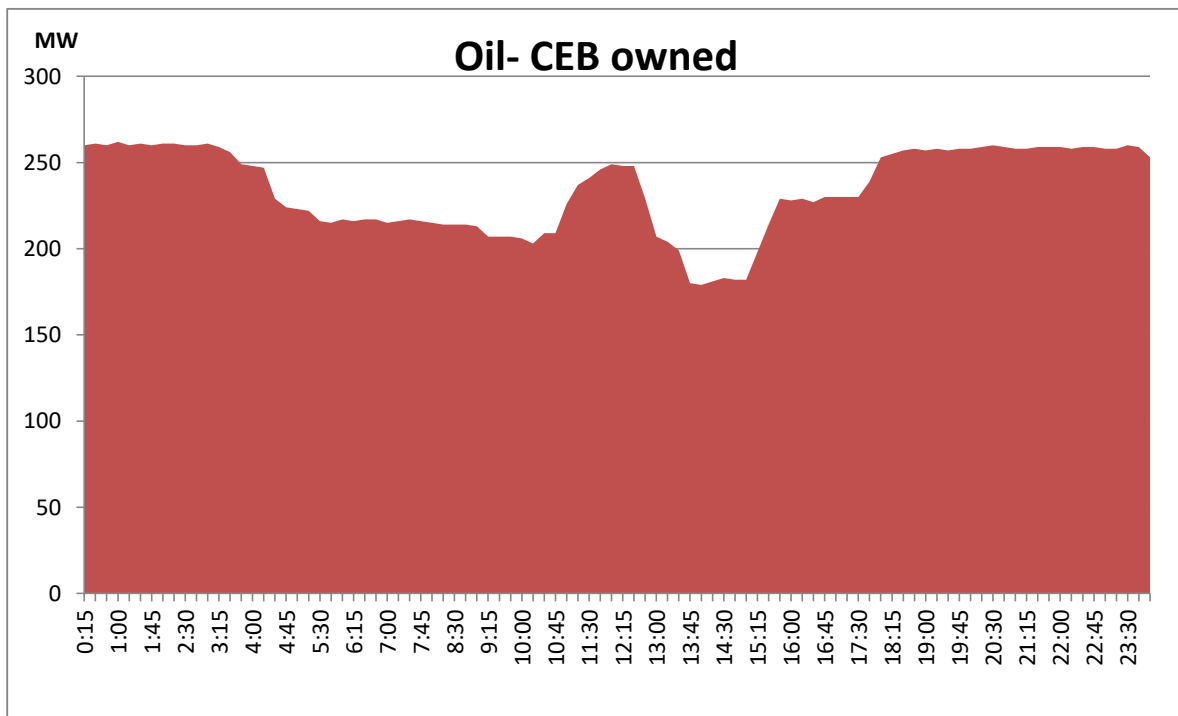
Solar and wind data is based on Telemetered Power Stations only



Coal generation during the day, August 23, 2020

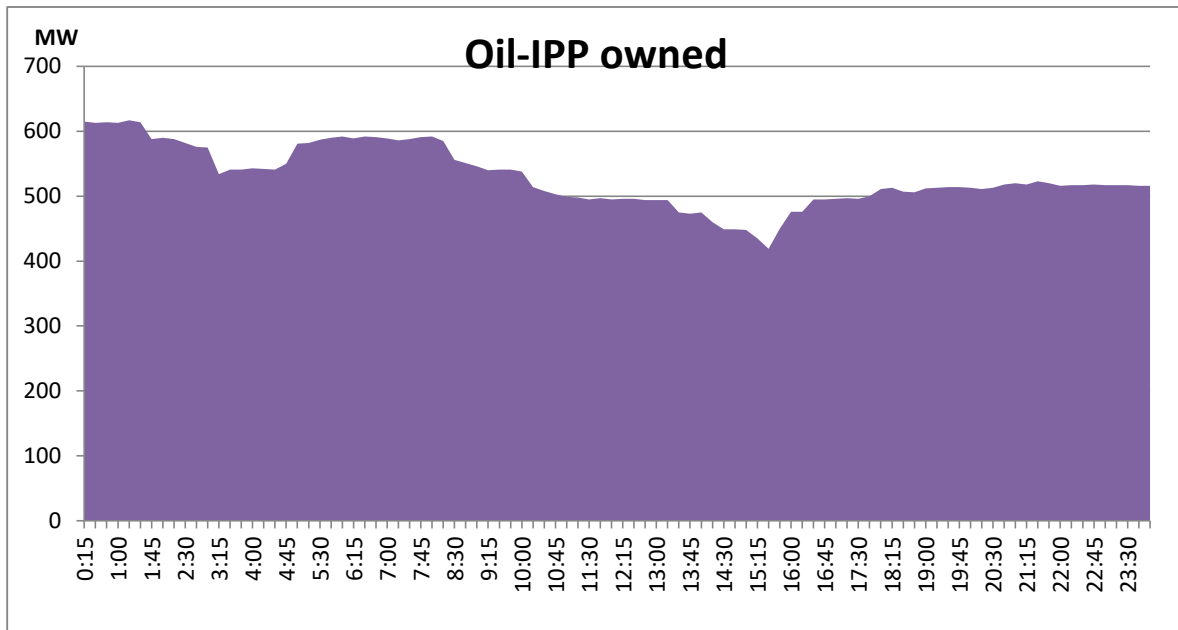


CEB Oil plant generation during, August 23, 2020

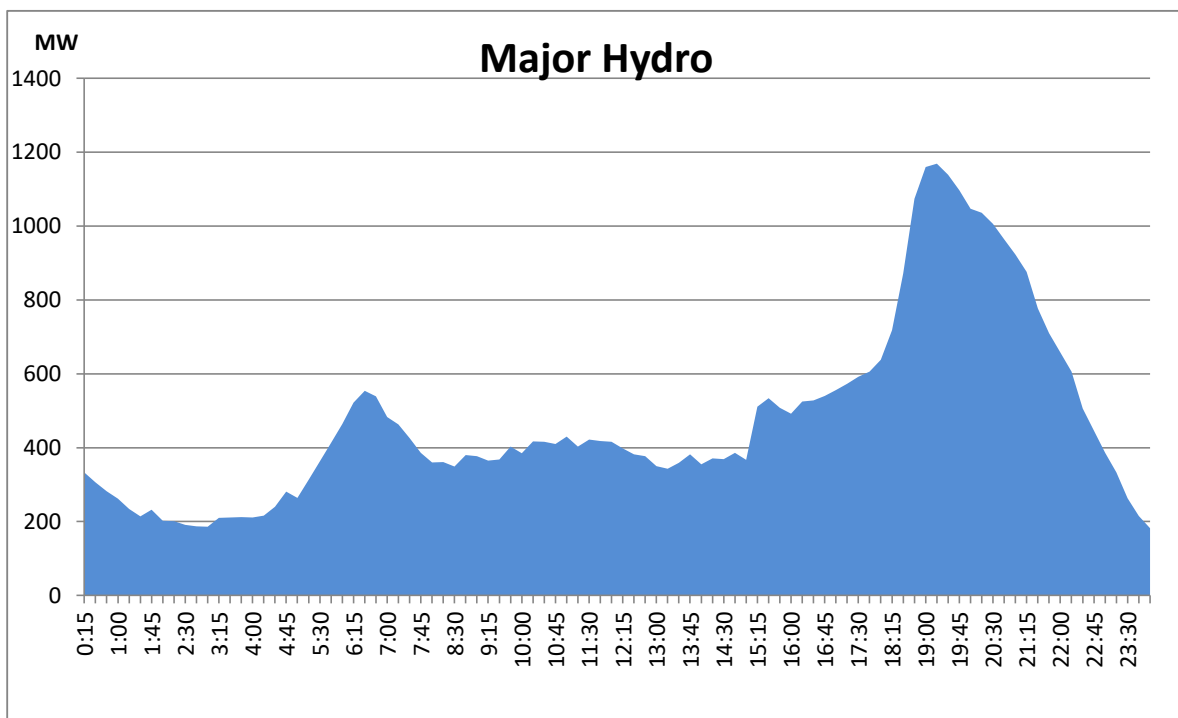




## IPP Oil Plant generation during , August 23, 2020

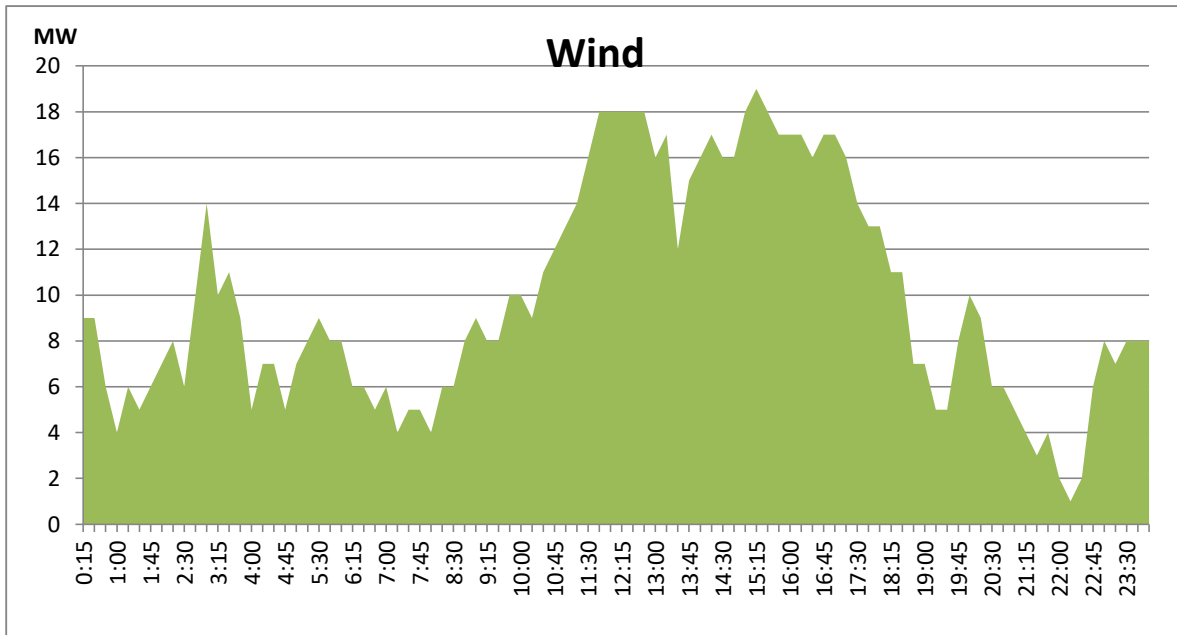


## Major Hydro generation during the August 23, 2020



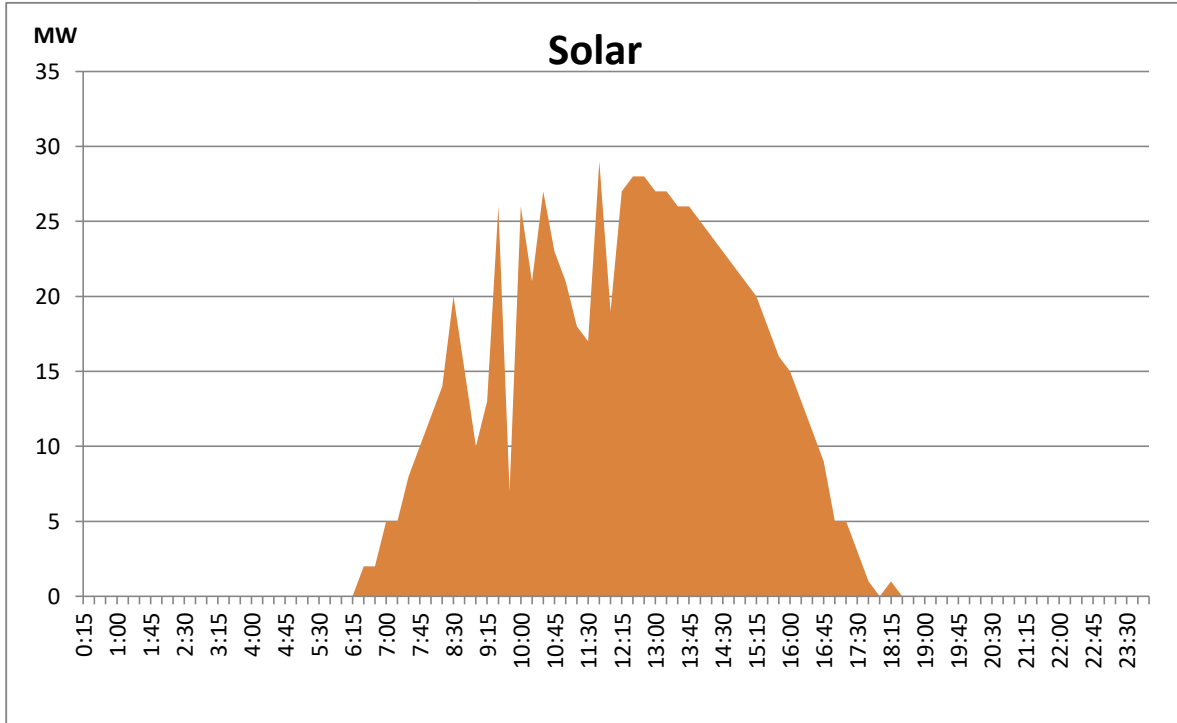
## Wind generation during the day, August 23, 2020

Based on Telemetered Power Stations only



## Solar generation during the day, August 23, 2020

Based on Telemetered Power Stations only



Plant	Dispatch (MWh)	Night peak Load (MW)	Plant Availability (MW)at 6 am
	August 24, 2020	August 24, 2020	August 25, 2020
Wimalasurendra	411.00	50.00	50.00
Old Laxapana	964.00	41.60	44.20
Canyon	582.00	30.00	60.00
New Laxapana	1,905.00	78.00	108.00
Polpitiya	1,527.00	58.00	90.00
Kotmale	1,880.00	143.00	201.00
Victoria	2,782.00	237.00	240.00
Randenigala	155.00	76.00	70.00
Rantambe	72.00	30.00	50.00
Ukuwela	834.00	36.00	36.00
Bowatenna	490.00	25.00	40.00
Upper Kotmale	1,683.00	150.00	150.00
Nilambe	30.00	3.20	3.20
Samanalawewa	481.00	49.00	100.00
Kukule	542.00	76.90	75.00
Inginiyagala	73.00	3.20	11.25
Udawalawe	-	-	4.00
Puttalam Coal I	-	-	-
Puttalam Coal II	6,487.00	270.00	270.00
Puttalam Coal III	4,852.00	201.00	200.00
KPS Small GTs	-	-	35.00
KPS GT 7	11.00	-	115.00
KCCP	-	-	-
Sapugaskanda A	718.00	35.00	36.00
Sapugaskanda B	1,373.00	59.00	63.00
Uthura Janani	459.00	22.00	23.00
Barge CEB	1,382.00	60.00	60.00
CEB-Thulhiriya	57.00	10.00	8.00
CEB-Kolonnawa	115.00	16.00	16.00
CEB-Mathugama	107.00	20.00	16.00
ACE Matara	433.00	24.00	24.00
Asia Power	632.00	39.00	45.00
AES - Kelanitissa	3,674.00	158.00	130.00
Westcoast	3,799.00	278.00	270.00
Northern Power	-	-	-
ACE Embilipitiya	1,701.00	81.00	79.00
Vpower-Pallekele	338.00	24.00	24.00
Vpower-Galle	147.00	10.00	10.00
Vpower-Hamba.	211.00	24.00	-
Vpower-Horana	352.00	24.00	24.00
Altaaqa-Mahiya.	81.00	10.00	-
Altaaqa-Polon.	66.00	8.00	-
Solar	333.00	-	Not available
Wind	598.00	4.00	Not available
MH and BM*	Not available	69.00	Not available

\*Only include data from

209 MW of power plants

**Major Incidents during the day**

1) Old Laxapana unit 01, 02, 03 tripped at 10:49hrs and unit 04, 05 tripped at 10:51hrs due to operation of breaker failure protection which was initiated by maloperation of DC system. Old Laxapana unit 02,03 and unit 04, 05 resumed generation 16:14hrs and 12:19hrs respectively. Old Laxapana unit 01 is yet to be resumed generation.

**Thermal Plant Capacity and Fuel types**

<b>Power Station</b>	<b>Capacity (MW)</b>	<b>Primary Fuel</b>
<b>CEB Hydro</b>		
Victoria	210	
Ukuwela	40	
Kotmale	201	
Randenigala	122	
Rantambe	49	
Bowatenna	40	
Nilambe	3.2	
Upper Kotmale	150	
Old Laxapana	50	
New Laxapana	115	
Polpitiya	75	
Wimalasurendra	50	
Canyon	60	
Samanalawewa	120	
Kukuleganga	75	
Inginiyagala	10	
Udawalawe	6	
<b>CEB Thermal</b>		
Sapugaskanda 1	72	Heavy Fuel
Sapugaskanda 2	72	Heavy Fuel
Kelanitissa Small Gas Turb	68	Auto Diesel
GT 7 - Kelanitissa	115	Auto Diesel
Kelanitissa CCY	165	Naptha & Diesel
Lakvijaya (Puttalam Coal)	275	Coal
Lakvijaya (Puttalam Coal)	275	Coal
Lakvijaya (Puttalam Coal)	275	Coal
Uthuru Janani	24	Heavy Fuel
Barge CEB	60	Furnace Oil
<b>Private Thermal (IPPs)</b>		
Asia Power	51	Heavy Fuel
Sojitz - Kelanitissa	163	Auto Diesel
West Coast	270	Low Sulphur Furnace oil
ACE Embilipitiya	100	Furnace Oil