

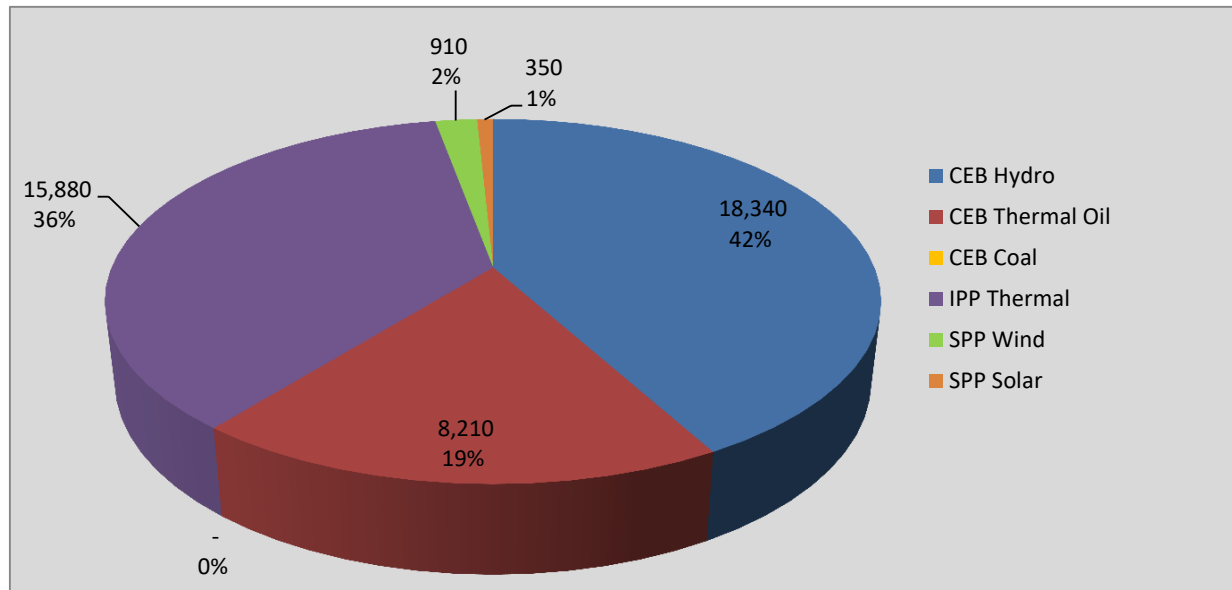
# **Generation and Reservoirs Statistics**

**August 19, 2020**



PUBLIC UTILITIES COMMISSION OF SRI LANKA

## Daily Generation Mix in MWh



**Total Generation 43,700 MWh**

Note: Generation from other SPPs (Mini Hydro and Biomass) is not included

## Cumulative Dispatch

Note: Generation from other SPPs (Mini Hydro, small scale Solar and Biomass) is not included

### For Current Month

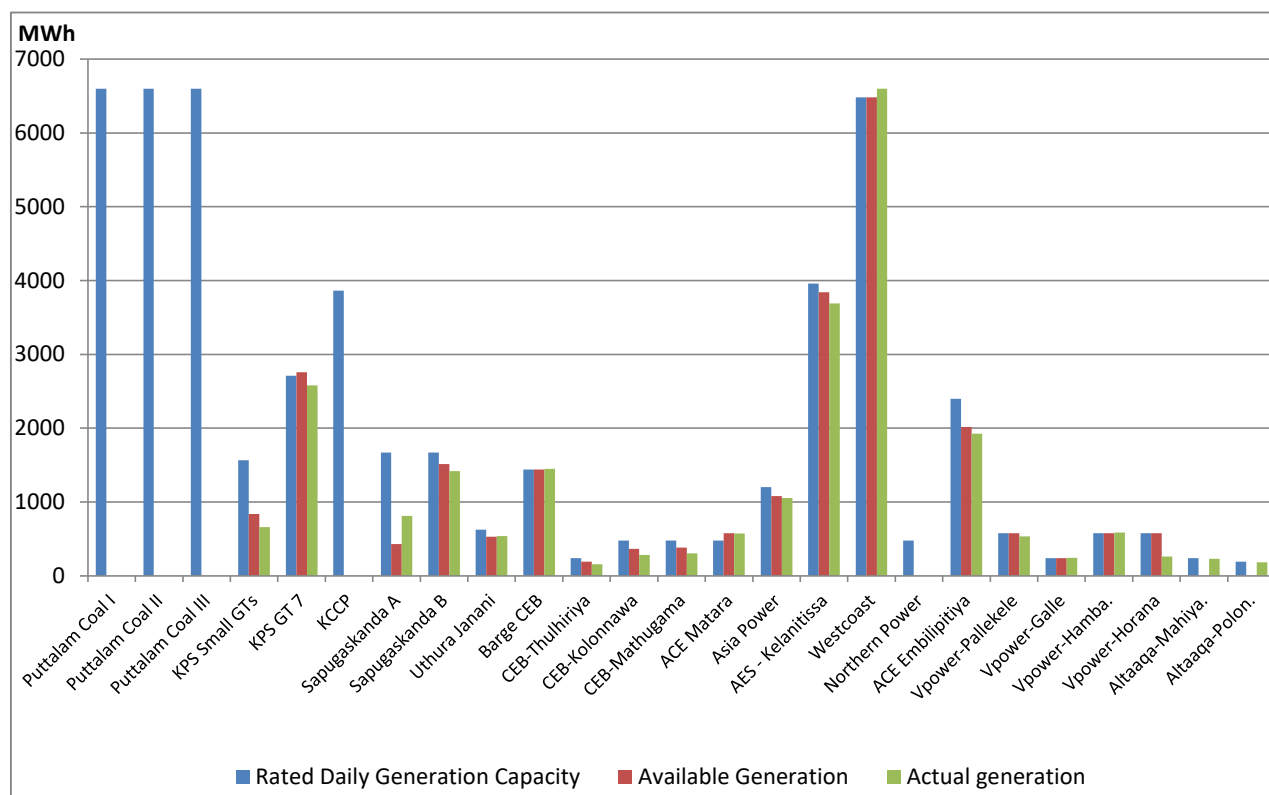
Category	Dispatch (GWh)	
CEB Hydro	293.2	41.38%
CEB Thermal Oil	45.5	6.42%
CEB Coal	296.0	41.77%
IPP Thermal	44.8	6.33%
SPP Wind	24.0	3.38%
SPP Solar	5.1	0.72%
<b>Total</b>	<b>708.5</b>	

### For Current Year

Category	Dispatch (GWh)	
CEB Hydro	2,155.9	23.72%
CEB Thermal Oil	992.8	10.92%
CEB Coal	3,865.4	42.53%
IPP Thermal	1,803.6	19.85%
SPP Wind	205.9	2.27%
SPP Solar	64.8	0.71%
<b>Total</b>	<b>9,088.2</b>	

## Thermal Plant Dispatch on

August 19, 2020

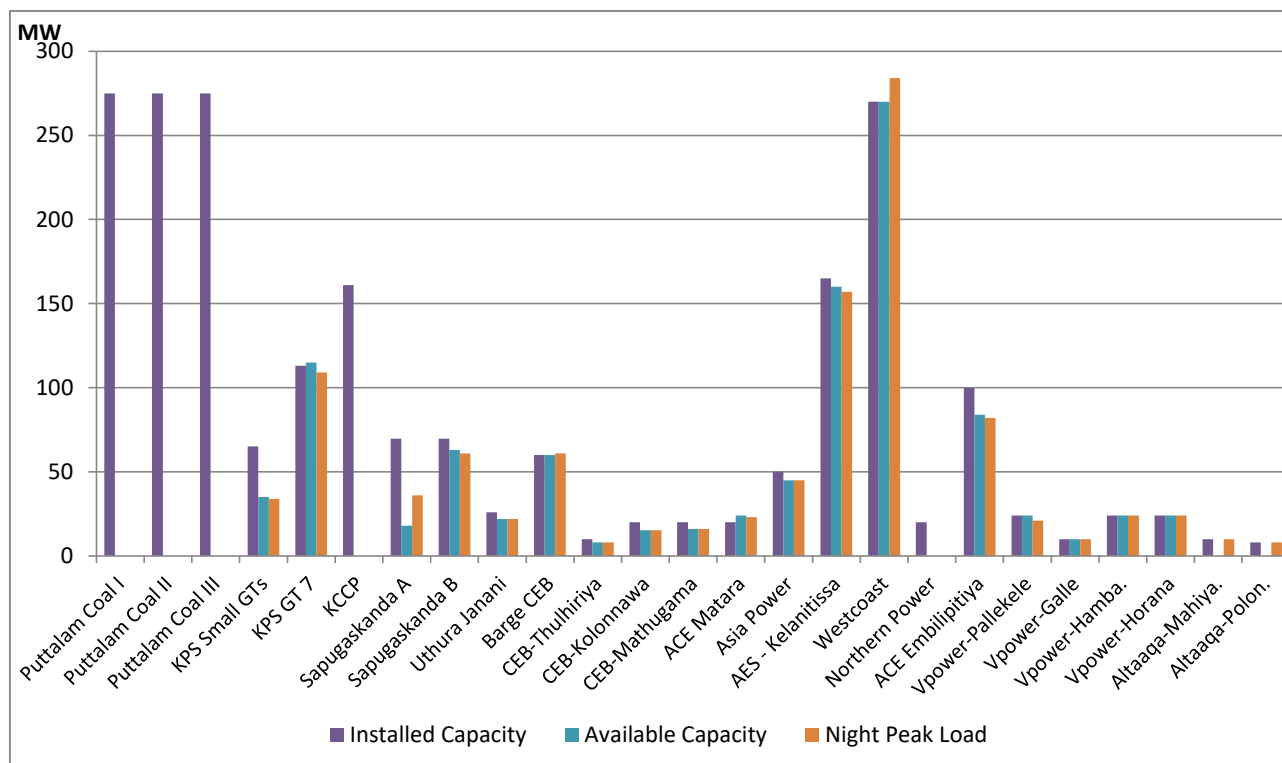


Note- Available Generation is estimated based on plant availability at 6.00am on

August 20, 2020

## Thermal Plant Loading at Night Peak on

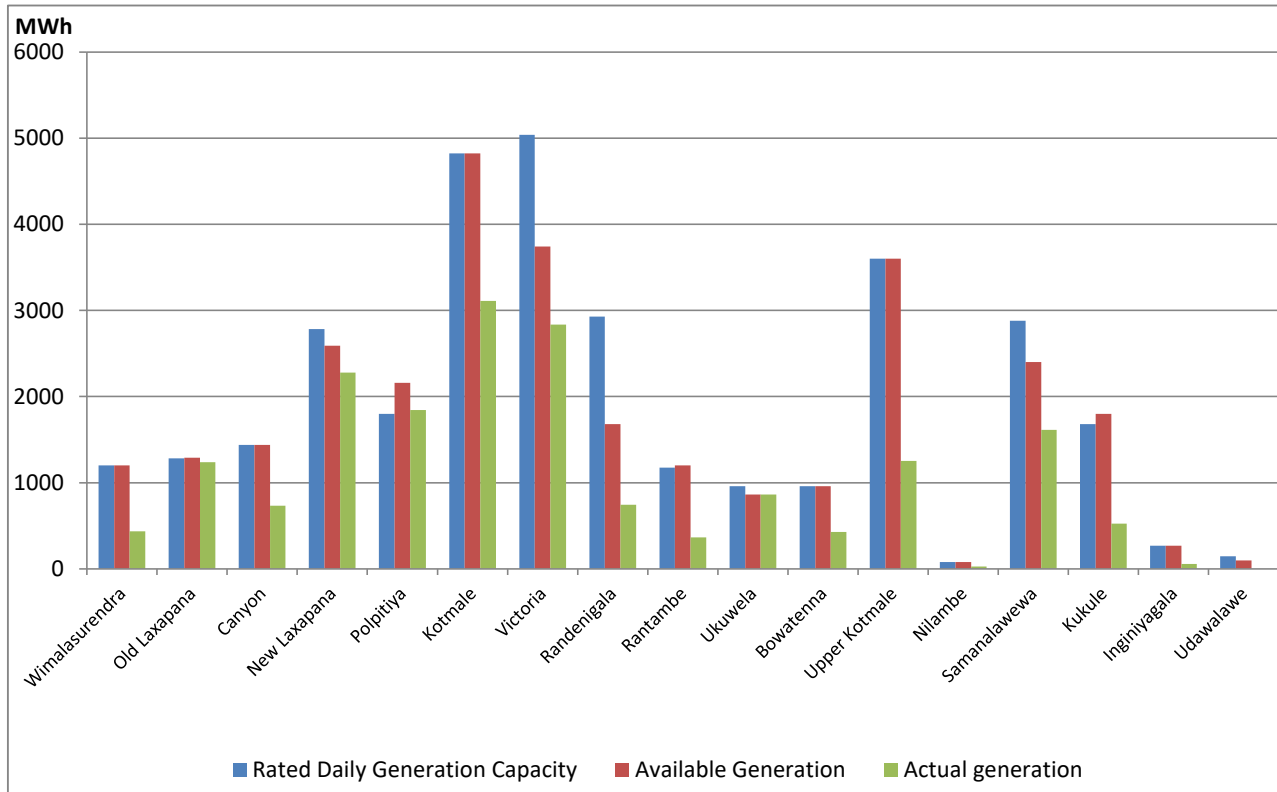
August 19, 2020



Note- Plant availability is recorded at 6.00 am on August 20, 2020

## Major Hydro Plant Dispatch on

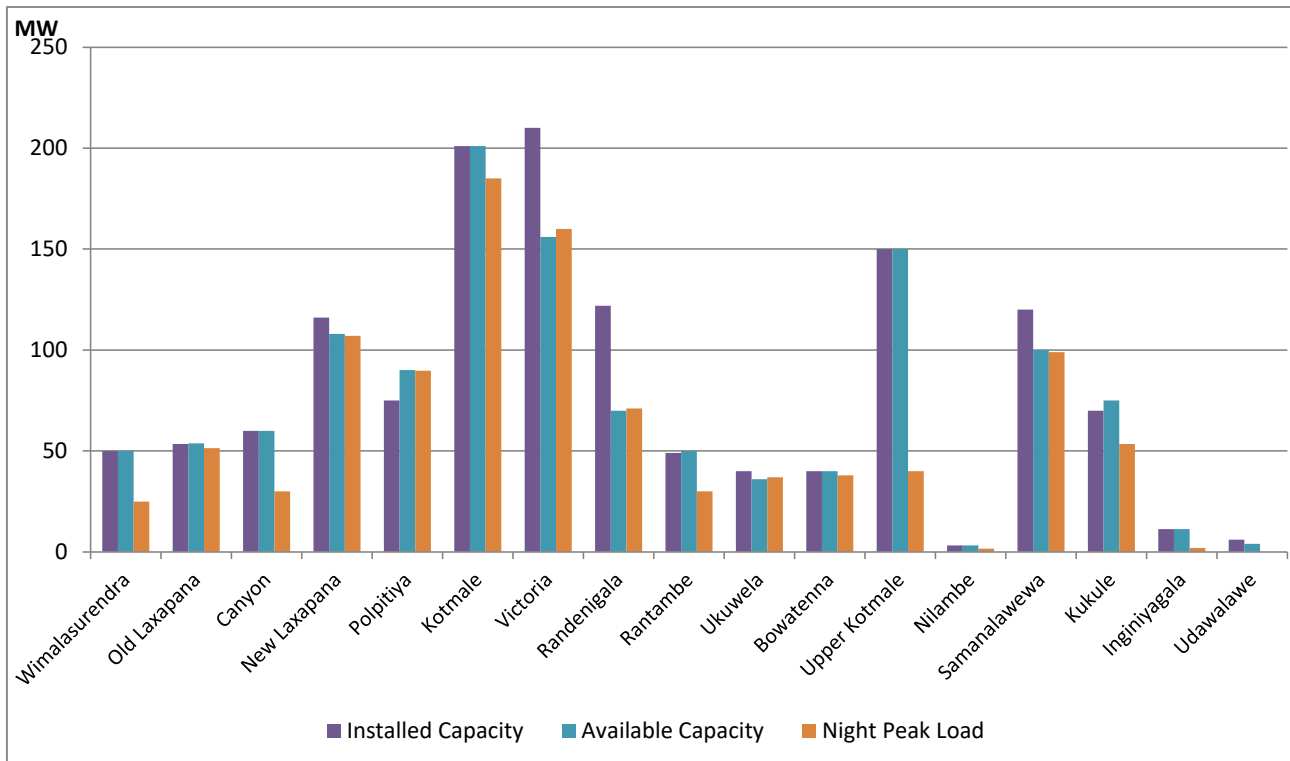
August 19, 2020



Note- Available Generation is estimated based on plant availability at 6.00am on August 20, 2020

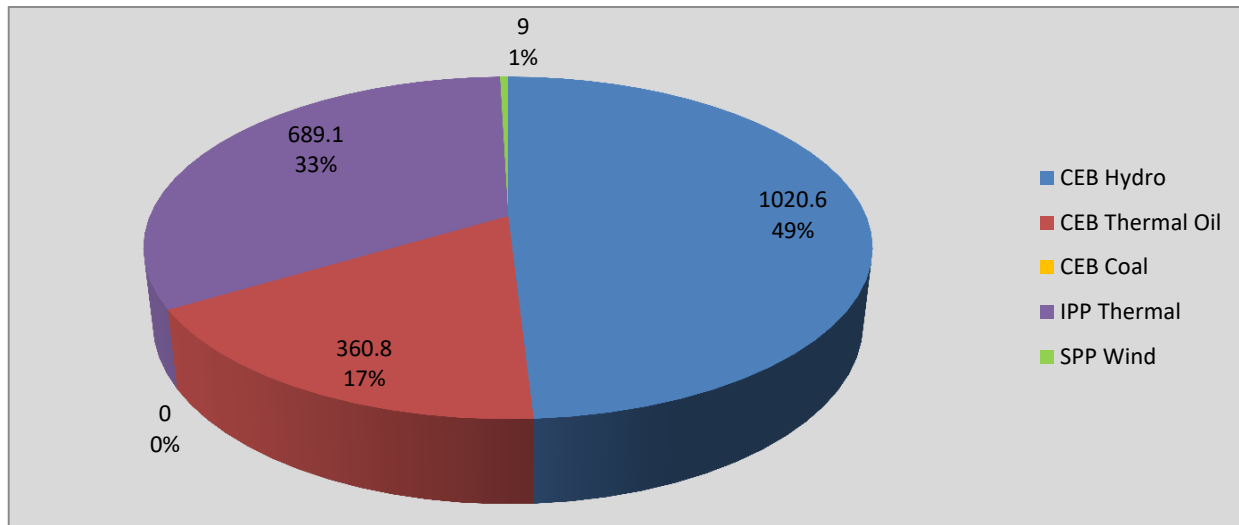
## Major Hydro Plant Loading at Night Peak on

August 19, 2020



Note- Plant availability is recorded at 6.00 am on August 20, 2020

## Contribution to the Night Peak in MW



Night Peak*	2,079.6 MW
Day Peak	2,155.2 MW
Minimum Demand	1,323.6 MW

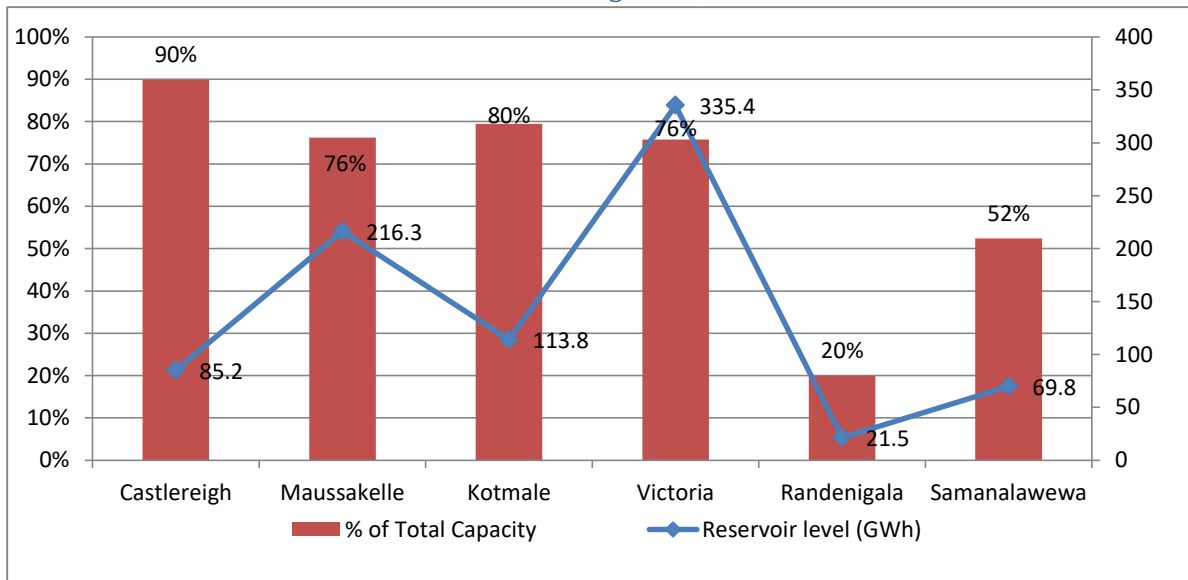
### Notes:

\*The above chart pattern and night peak figure is presented excluding the contribution of Moragahakanda, other mini hydro and biomass power plants from June 8 2020 onwards

\*\*Day peak and Minimum demand includes the contribution from Moragahakanda, wind and solar plants

\* in addition to the night peak figure presented above, Moragahakanda plant, other MiniHydro and Biomass Plants of installed capacity 195.00 MW has recorded total 69.60 MW at the night peak

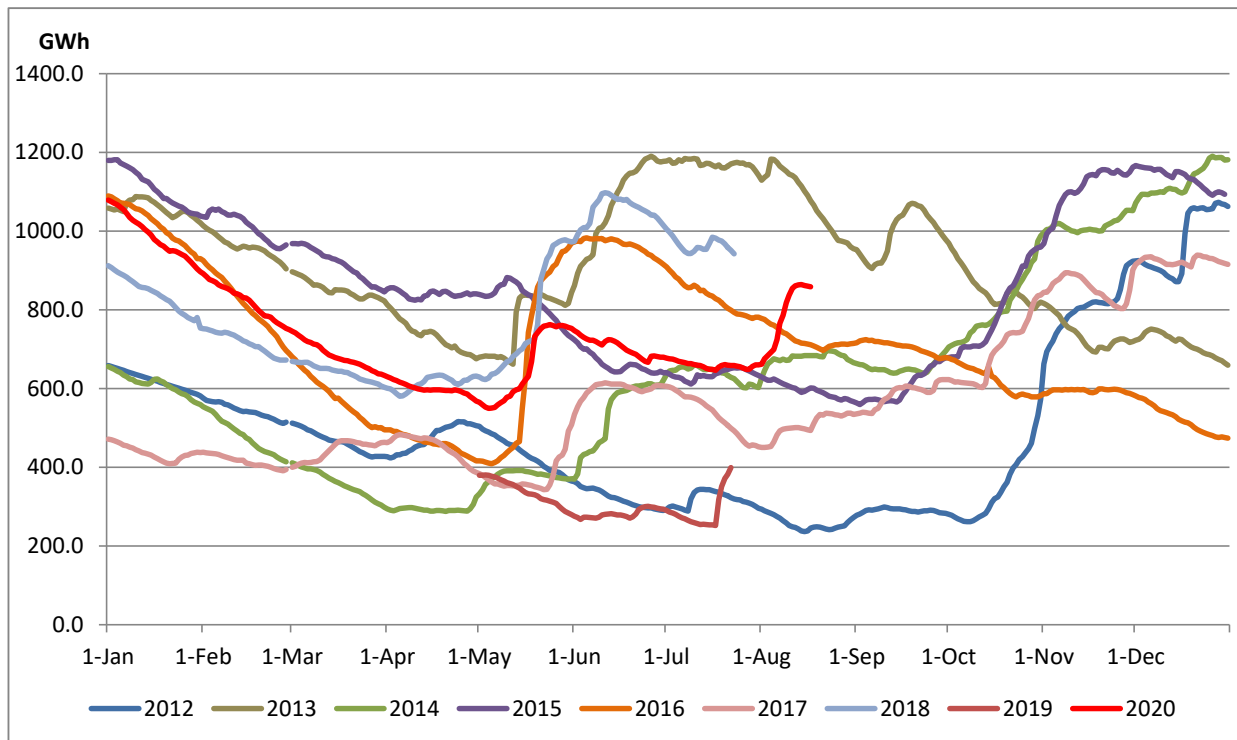
## Reservoir Levels - as at 06.00 Hr on August 20, 2020



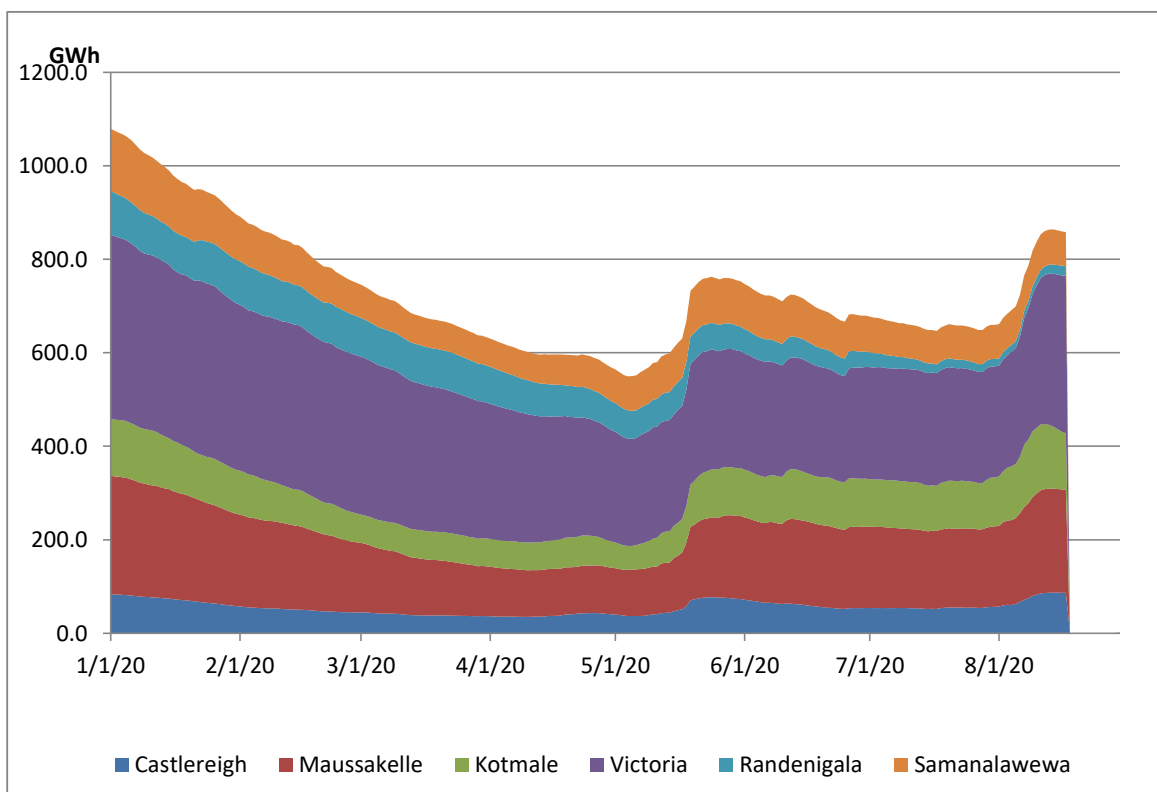
Total Reservoir Level(GWh)	842
% of Total capacity	69.9%

## Comparison of Total Reservoir Storage Levels with Past Years

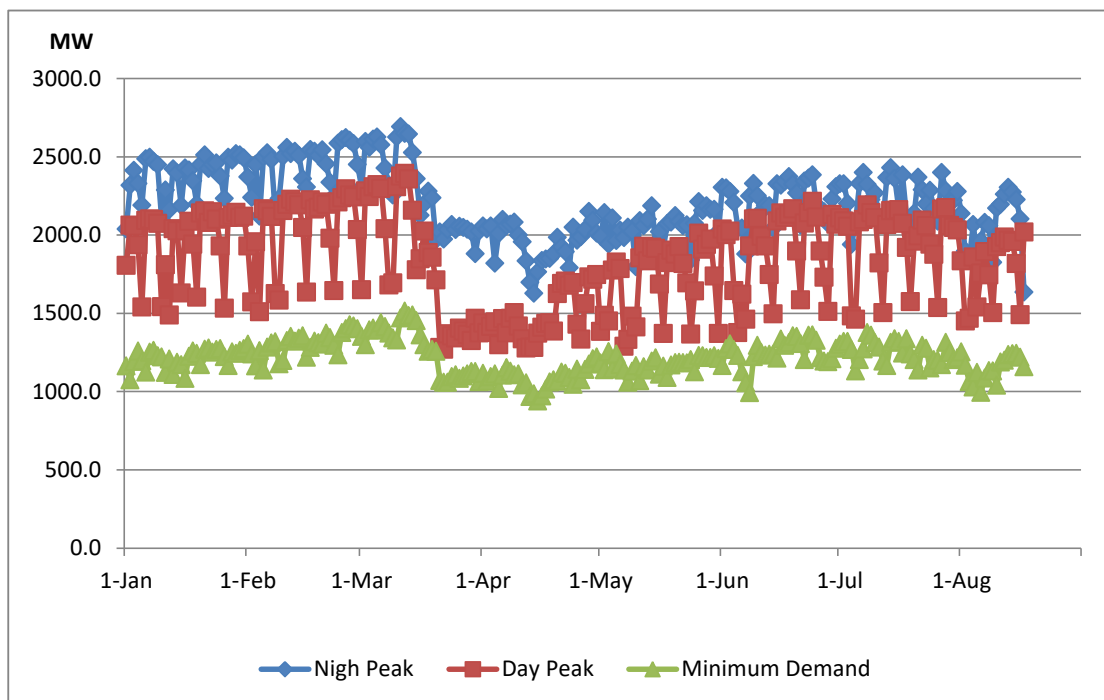
Data from June 2018 to March 2020 are not indicated in the graph



## Variation of Major Hydro Reservoir Levels in the current year (GWh)



## Variation of Demand during the current year



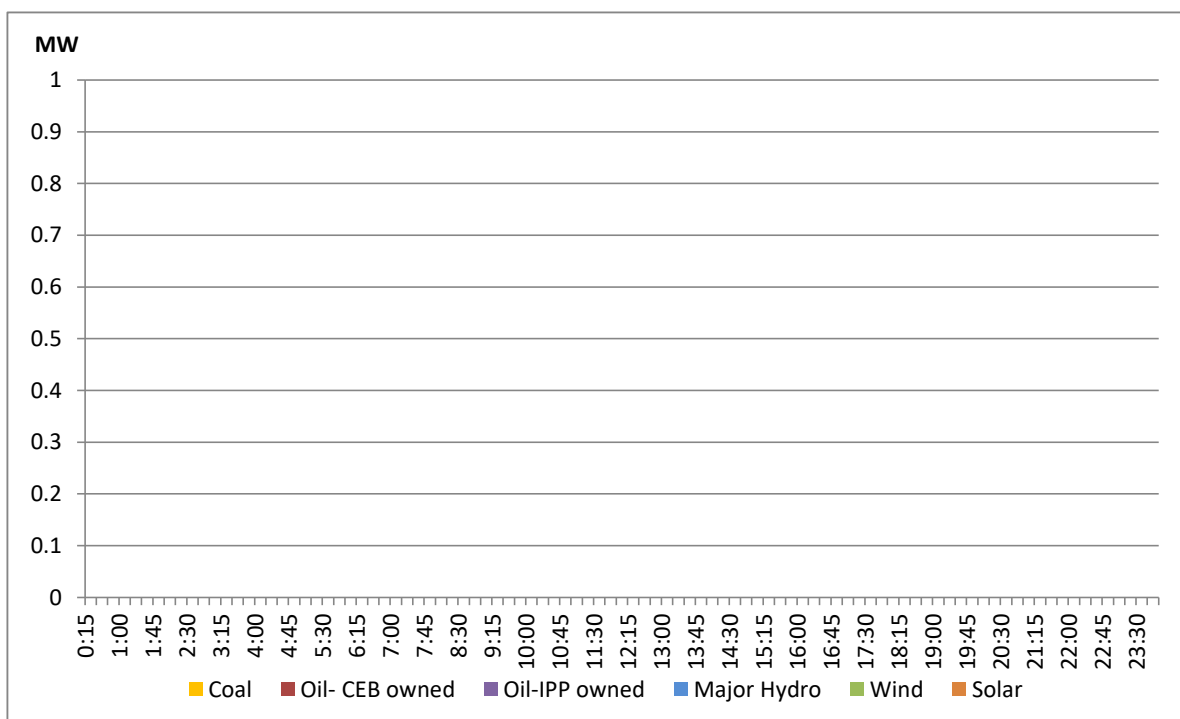
Notes: The night peak graph in the above chart is revised from June 8, 2020 to exclude the contribution from Mini hydro and biomass power plants contribution

Day peak and minimum demand graphs includes the contribution from Moragahakanda power plant

All graphs include the contribution telemetered from solar and wind plants

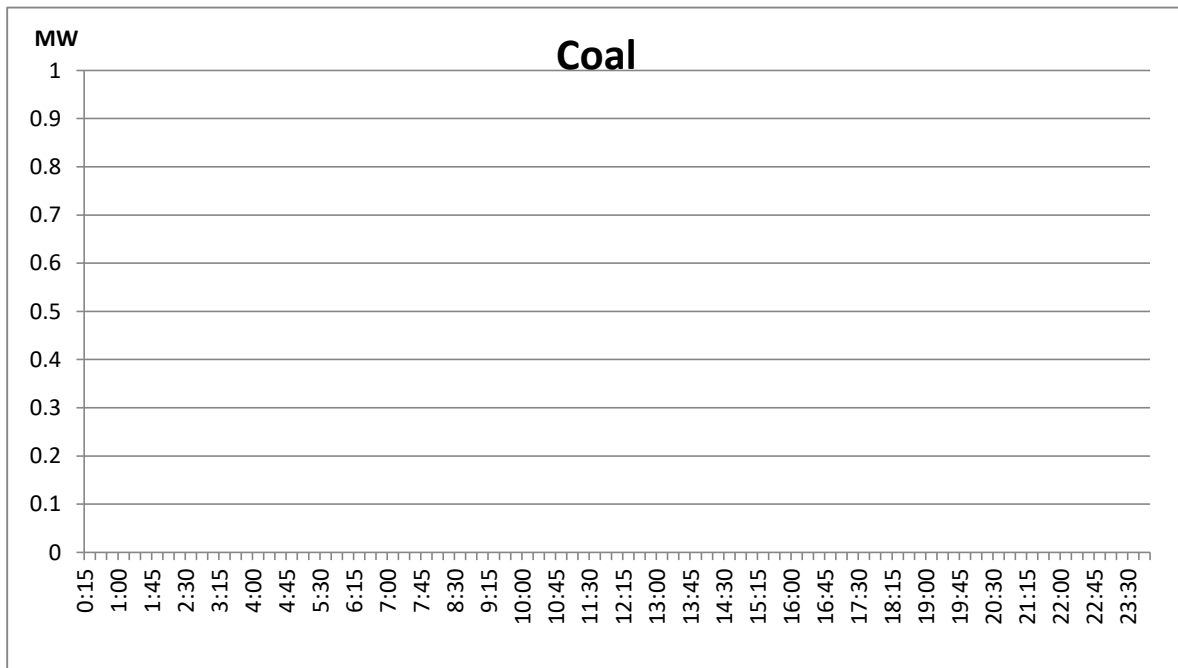
## Daily Load Curve - August 18, 2020

Solar and wind data is based on Telemetered Power Stations only



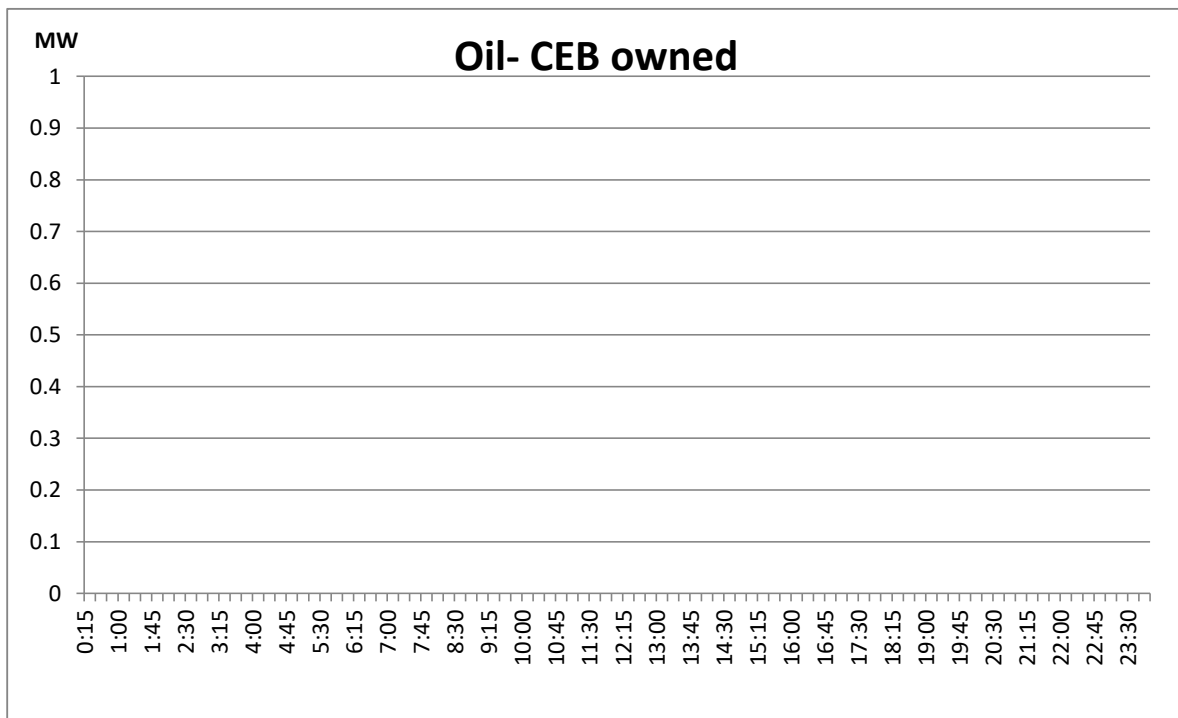
CEB has informed the unavailability of data due to failure in data recording system

## Coal generation during the day, August 18, 2020



CEB has informed the unavailability of data due to failure in data recording system

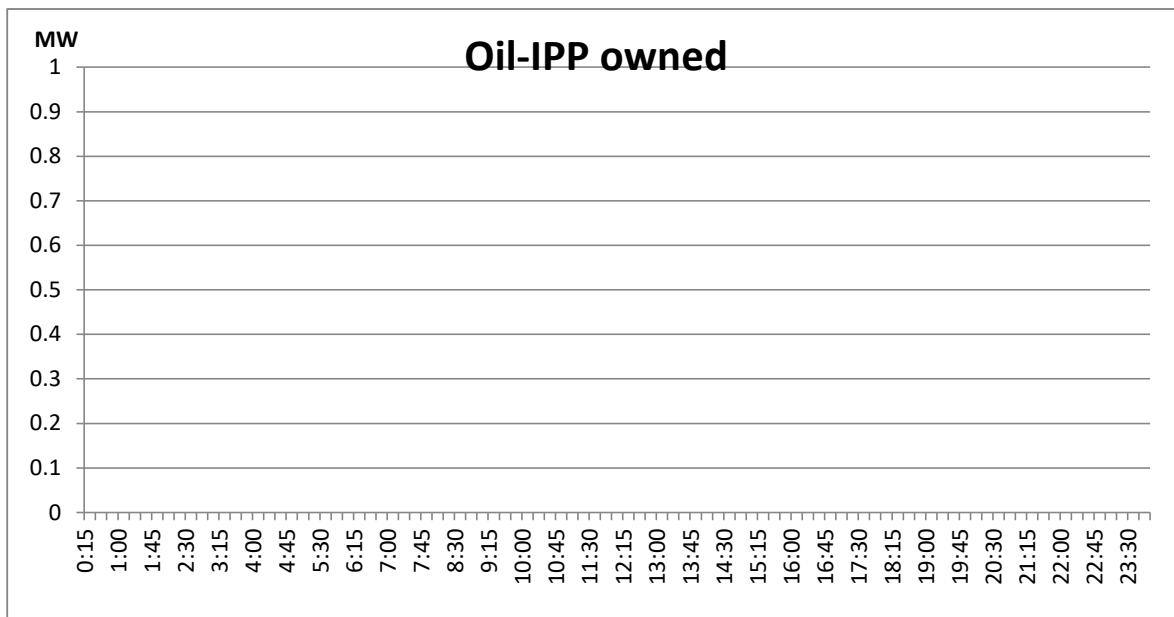
## CEB Oil plant generation during, August 18, 2020



CEB has informed the unavailability of data due to failure in data recording system

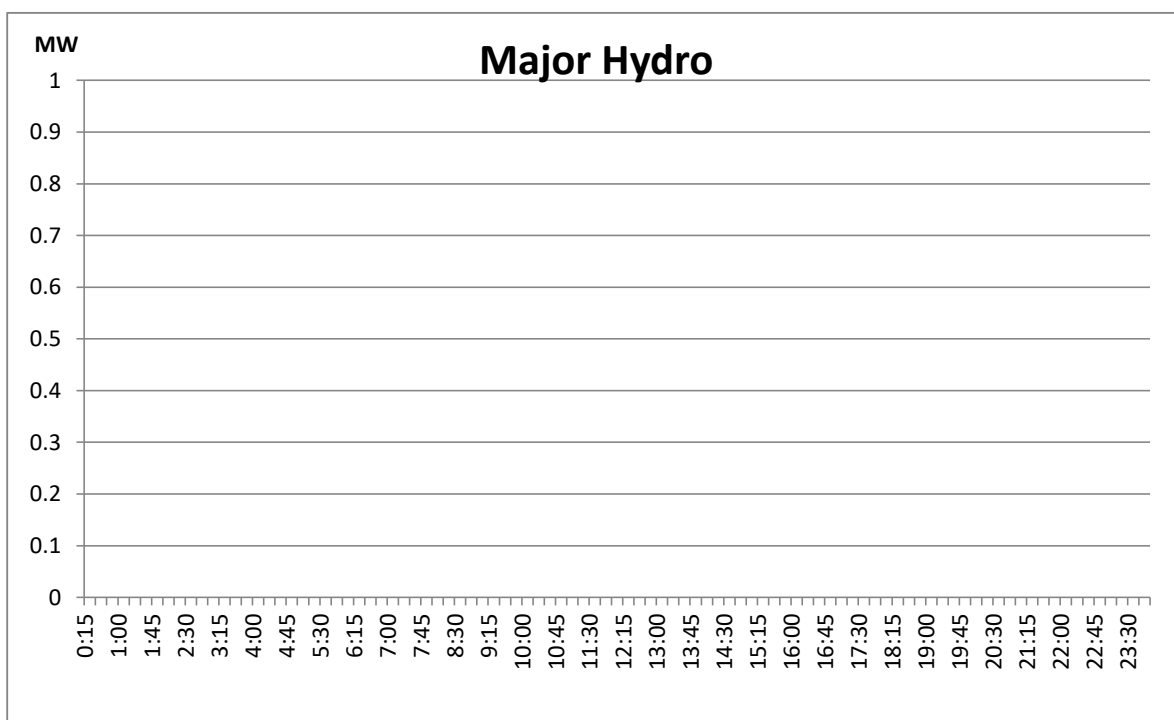


## IPP Oil Plant generation during , August 18, 2020



CEB has informed the unavailability of data due to failure in data recording system

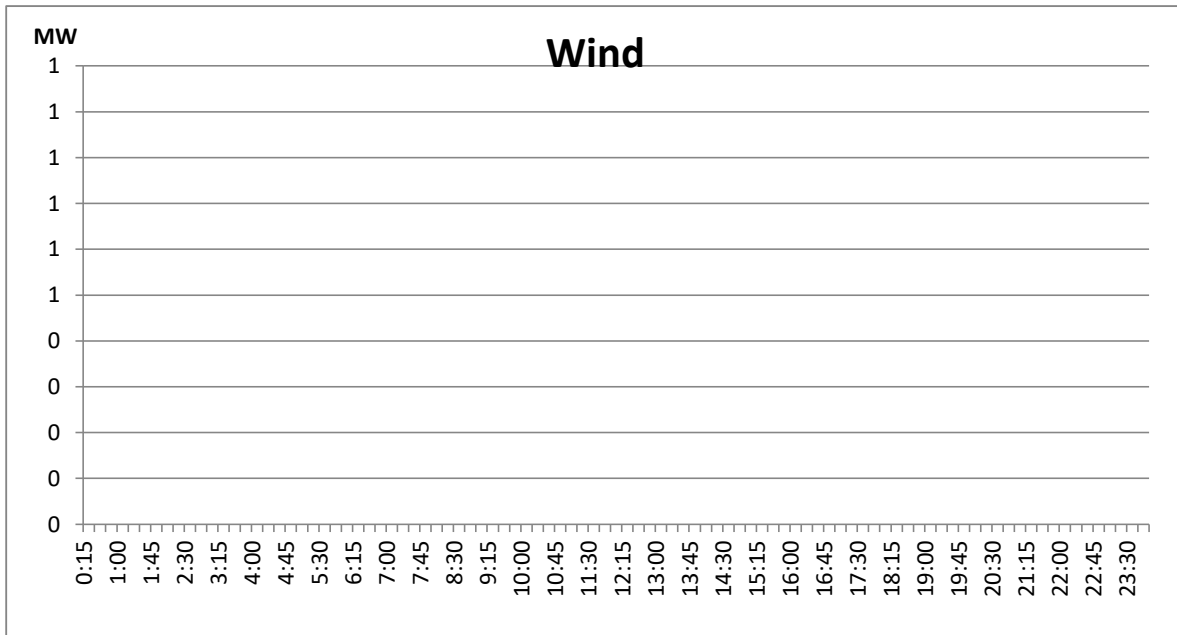
## Major Hydro generation during the August 18, 2020



CEB has informed the unavailability of data due to failure in data recording system

## Wind generation during the day, August 18, 2020

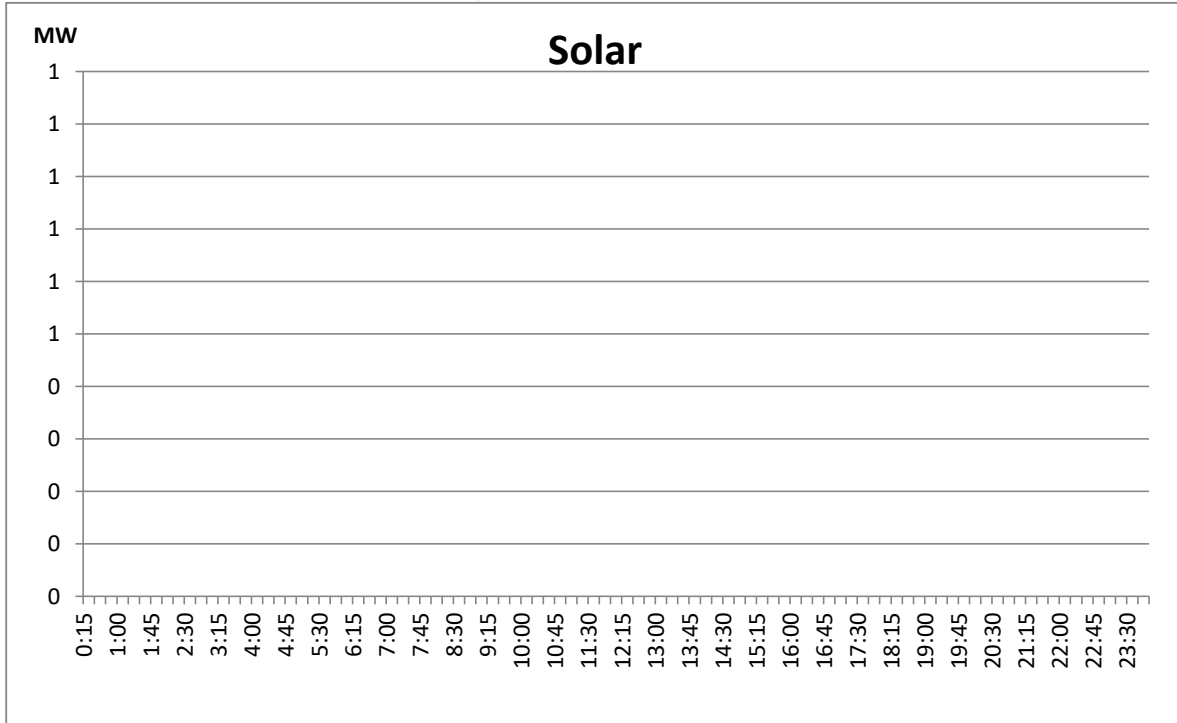
Based on Telemetered Power Stations only



CEB has informed the unavailability of data due to failure in data recording system

## Solar generation during the day, August 18, 2020

Based on Telemetered Power Stations only



CEB has informed the unavailability of data due to failure in data recording system

Power Station	Capacity (MW)	Primary Fuel
<b>CEB Hydro</b>		
Victoria	210	
Ukuwela	40	
Kotmale	201	
Randenigala	122	
Rantambe	49	
Bowatenna	40	
Nilambe	3.2	
Upper Kotmale	150	
Old Laxapana	50	
New Laxapana	115	
Polpitiya	75	
Wimalasurendra	50	
Canyon	60	
Samanalawewa	120	
Kukuleganga	75	
Inginiyagala	10	
Udawalawe	6	
<b>CEB Thermal</b>		
Sapugaskanda 1	72	Heavy Fuel
Sapugaskanda 2	72	Heavy Fuel
Kelanitissa Small Gas Turb	68	Auto Diesel
GT 7 - Kelanitissa	115	Auto Diesel
Kelanitissa CCY	165	Naptha & Diesel
Lakvijaya (Puttalam Coal)	275	Coal
Lakvijaya (Puttalam Coal)	275	Coal
Lakvijaya (Puttalam Coal)	275	Coal
Uthuru Janani	24	Heavy Fuel
Barge CEB	60	Furnace Oil
<b>Private Thermal (IPPs)</b>		
Asia Power	51	Heavy Fuel
Sojitz - Kelanitissa	163	Auto Diesel
West Coast	270	Low Sulphur Furnace oil
ACE Embilipitiya	100	Furnace Oil

Plant	Dispatch (MWh)	Night peak Load (MW)	Plant Availability (MW)at 6 am
	August 19, 2020	August 19, 2020	August 20, 2020
Wimalasurendra	437.00	25.00	50.00
Old Laxapana	1,238.00	51.40	53.80
Canyon	732.00	30.00	60.00
New Laxapana	2,277.00	107.00	108.00
Polpitiya	1,844.00	89.70	90.00
Kotmale	3,110.00	185.00	201.00
Victoria	2,835.00	160.00	156.00
Randenigala	745.00	71.00	70.00
Rantambe	366.00	30.00	50.00
Ukuwela	864.00	37.00	36.00
Bowatenna	427.00	38.00	40.00
Upper Kotmale	1,251.00	40.00	150.00
Nilambe	25.00	1.60	3.20
Samanalawewa	1,614.00	99.00	100.00
Kukule	523.00	53.50	75.00
Inginiyagala	56.00	1.90	11.25
Udawalawe	-	-	4.00
Puttalam Coal I	-	-	-
Puttalam Coal II	-	-	-
Puttalam Coal III	-	-	-
KPS Small GTs	661.00	34.00	35.00
KPS GT 7	2,582.00	109.00	115.00
KCCP	-	-	-
Sapugaskanda A	813.00	36.00	18.00
Sapugaskanda B	1,420.00	61.00	63.00
Uthura Janani	537.00	22.00	22.00
Barge CEB	1,448.00	61.00	60.00
CEB-Thulhiriya	158.00	8.00	8.00
CEB-Kolonnawa	284.00	15.20	15.20
CEB-Mathugama	304.00	16.00	16.00
ACE Matara	572.00	23.00	24.00
Asia Power	1,056.00	45.00	45.00
AES - Kelanitissa	3,689.00	157.00	160.00
Westcoast	6,597.00	284.00	270.00
Northern Power	-	-	-
ACE Embilipitiya	1,927.00	82.00	84.00
Vpower-Pallekele	535.00	21.00	24.00
Vpower-Galle	245.00	10.00	10.00
Vpower-Hamba.	586.00	24.00	24.00
Vpower-Horana	263.00	24.00	24.00
Altaaqa-Mahiya.	230.00	10.00	-
Altaaqa-Polon.	185.00	8.00	-
Solar	352.00	-	Not available
Wind	910.00	9.00	Not available
MH and BM*	Not available	70.00	Not available

\*Only include data from

195 MW of power plants