

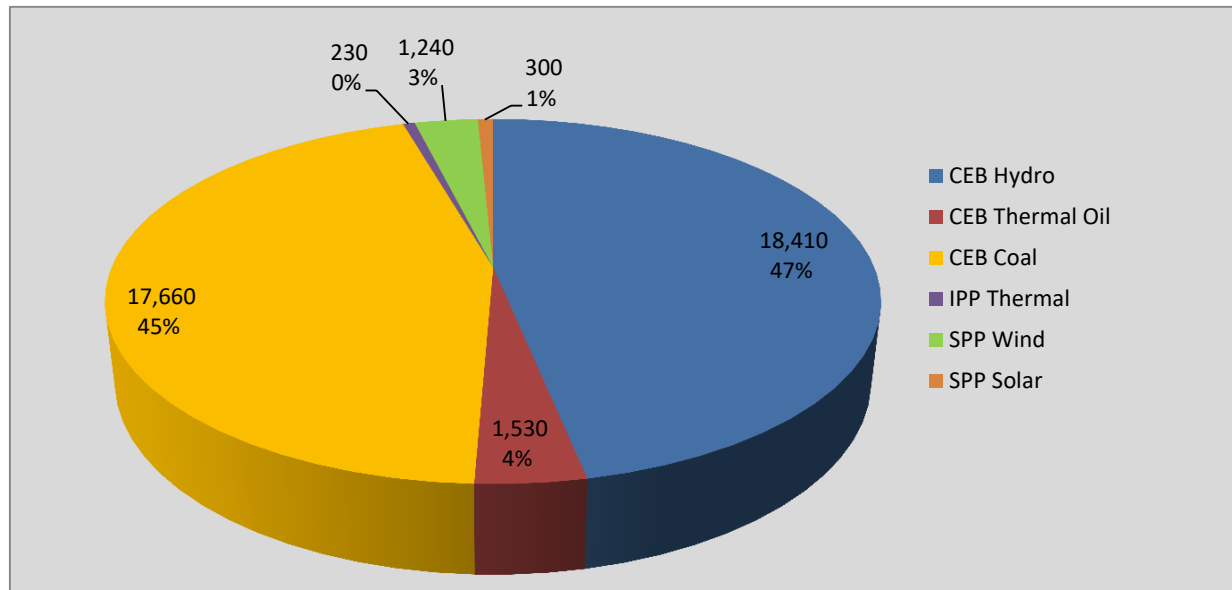
Generation and Reservoirs Statistics

August 15, 2020



PUBLIC UTILITIES COMMISSION OF SRI LANKA

Daily Generation Mix in MWh



Total Generation 39,380 MWh

Note: Generation from other SPPs (Mini Hydro and Biomass) is not included

Cumulative Dispatch

Note: Generation from other SPPs (Mini Hydro, small scale Solar and Biomass) is not included

For Current Month

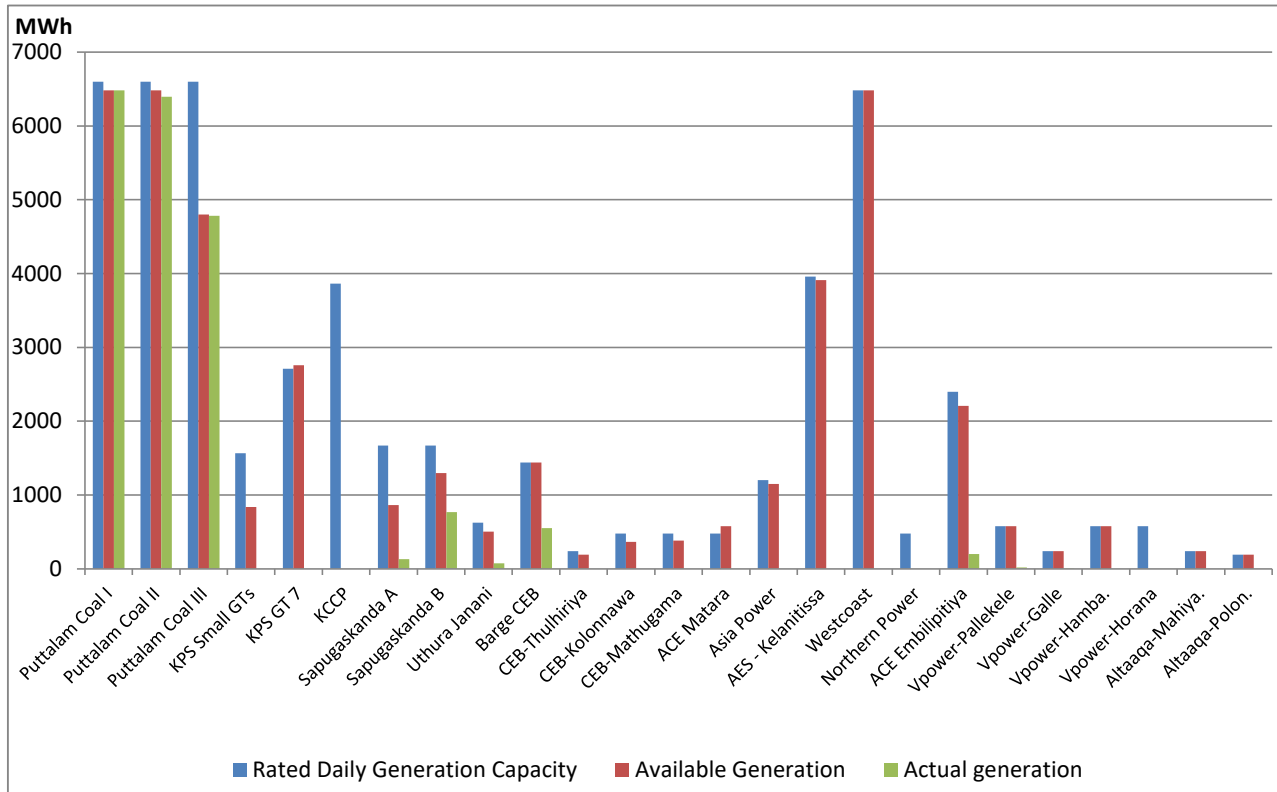
| Category | Dispatch (GWh) | |
|-----------------|----------------|--------|
| CEB Hydro | 227.4 | 40.75% |
| CEB Thermal Oil | 26.5 | 4.74% |
| CEB Coal | 269.3 | 48.25% |
| IPP Thermal | 10.7 | 1.92% |
| SPP Wind | 20.4 | 3.65% |
| SPP Solar | 3.9 | 0.70% |
| Total | 558.1 | |

For Current Year

| Category | Dispatch (GWh) | |
|-----------------|----------------|--------|
| CEB Hydro | 2,090.1 | 23.39% |
| CEB Thermal Oil | 973.8 | 10.90% |
| CEB Coal | 3,838.7 | 42.95% |
| IPP Thermal | 1,769.4 | 19.80% |
| SPP Wind | 202.3 | 2.26% |
| SPP Solar | 63.6 | 0.71% |
| Total | 8,937.9 | |

Thermal Plant Dispatch on

August 15, 2020

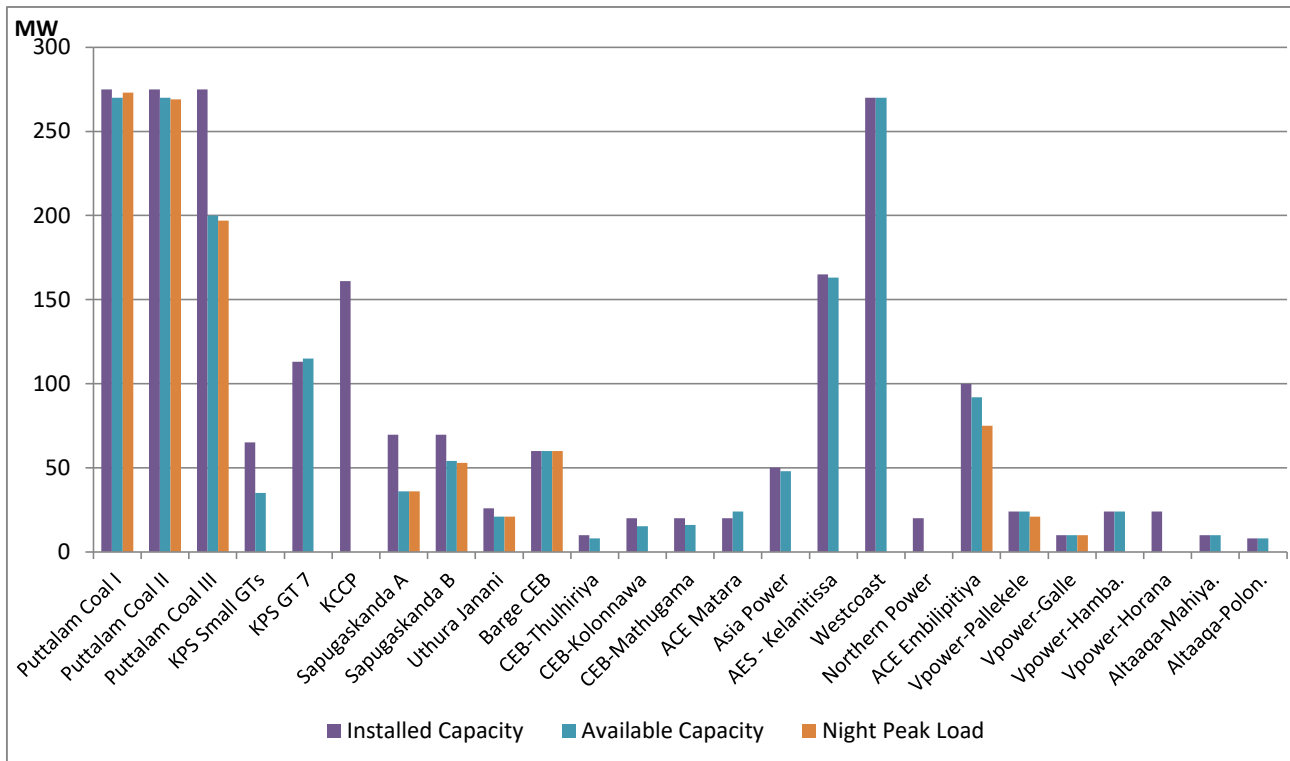


Note- Available Generation is estimated based on plant availability at 6.00am on

August 16, 2020

Thermal Plant Loading at Night Peak on

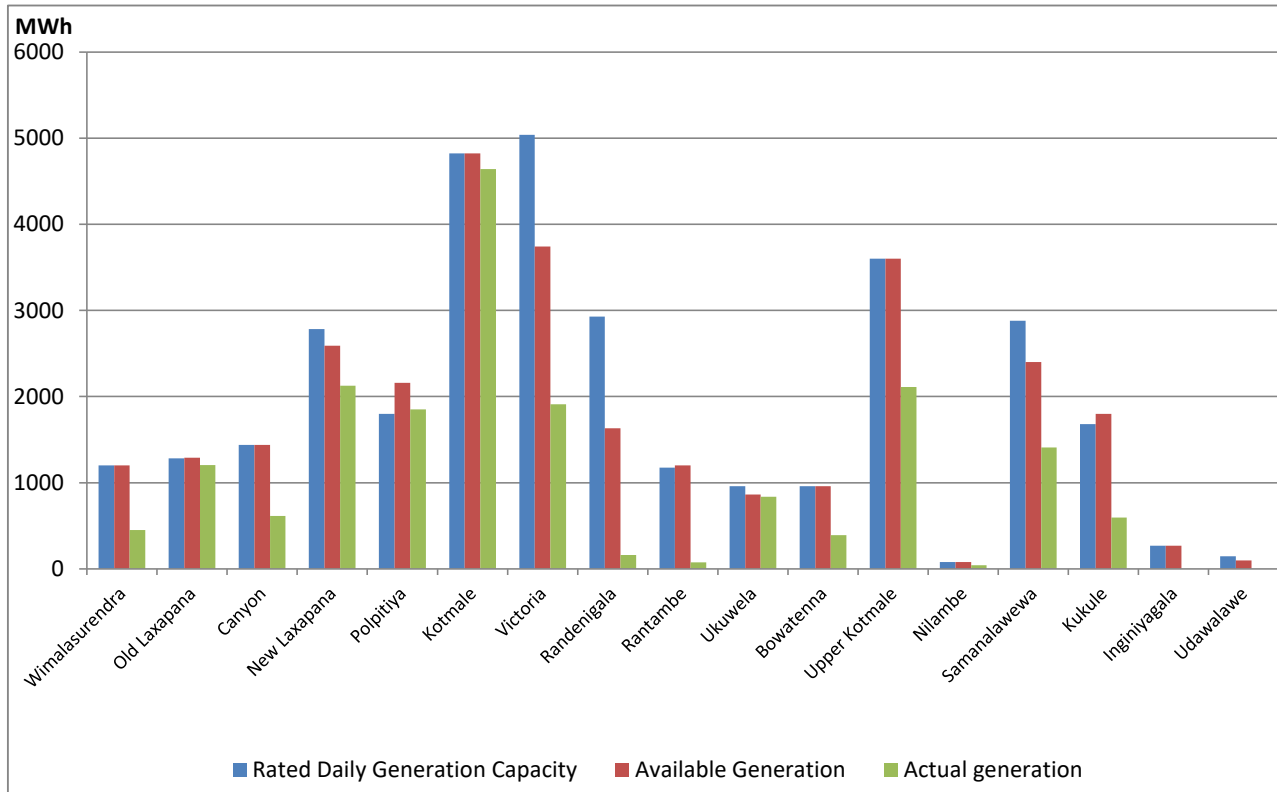
August 15, 2020



Note- Plant availability is recorded at 6.00 am on August 16, 2020

Major Hydro Plant Dispatch on

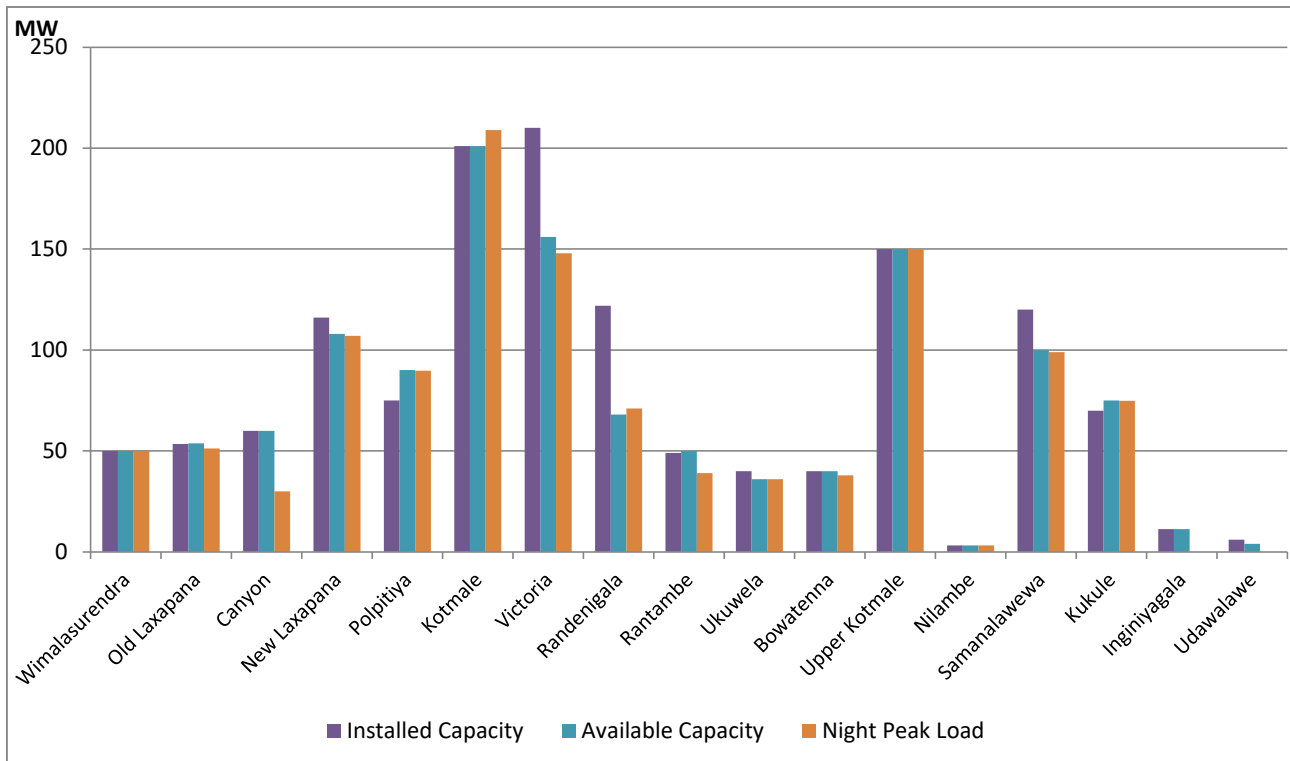
August 15, 2020



Note- Available Generation is estimated based on plant availability at 6.00am on August 16, 2020

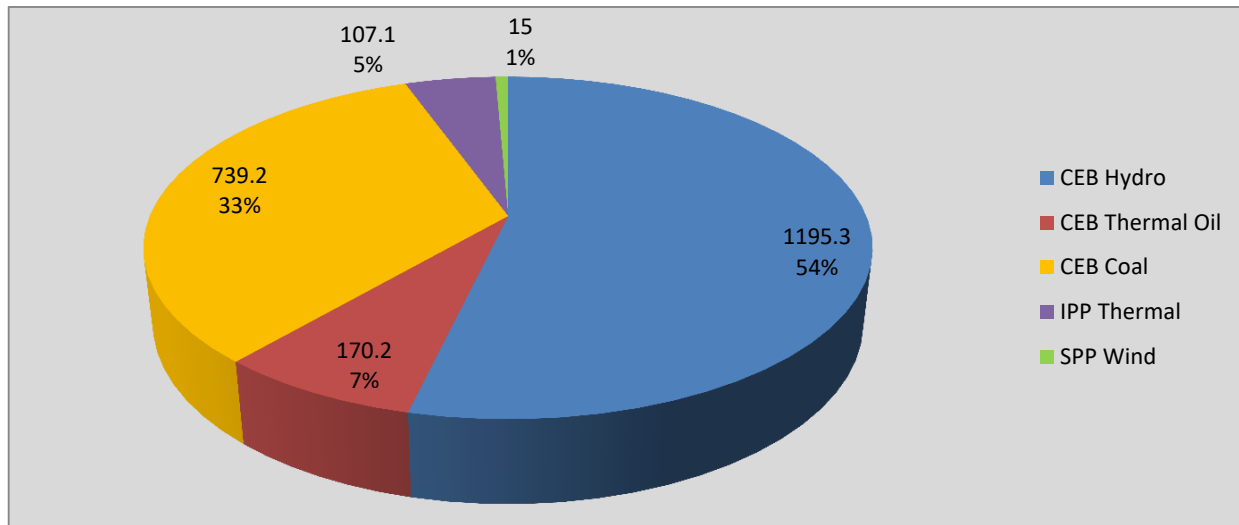
Major Hydro Plant Loading at Night Peak on

August 15, 2020



Note- Plant availability is recorded at 6.00 am on August 16, 2020

Contribution to the Night Peak in MW



| | |
|----------------|------------|
| Night Peak* | 2,226.9 MW |
| Day Peak | 1,817.1 MW |
| Minimum Demand | 1,244.3 MW |

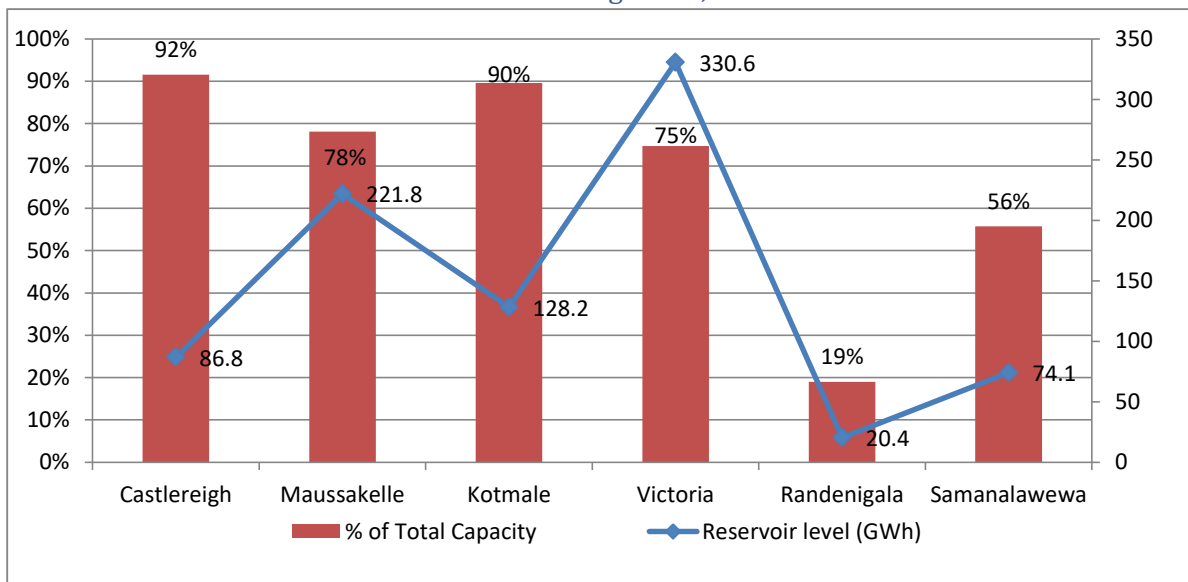
Notes:

*The above chart pattern and night peak figure is presented excluding the contribution of Moragahakanda, other mini hydro and biomass power plants from June 8 2020 onwards

**Day peak and Minimum demand includes the contribution from Moragahakanda, wind and solar plants

* in addition to the night peak figure presented above, Moragahakanda plant, other MiniHydro and Biomass Plants of installed capacity 201.54 MW has recorded total 96.60 MW at the night peak

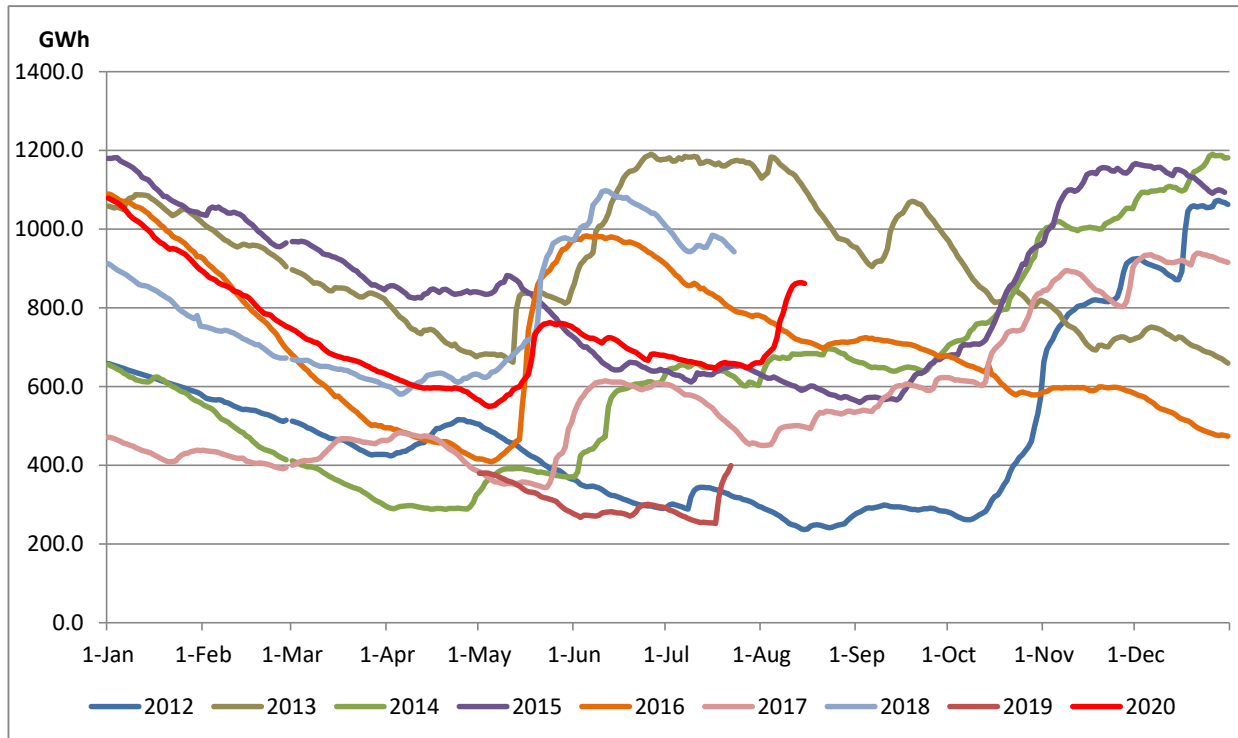
Reservoir Levels - as at 06.00 Hr on August 16, 2020



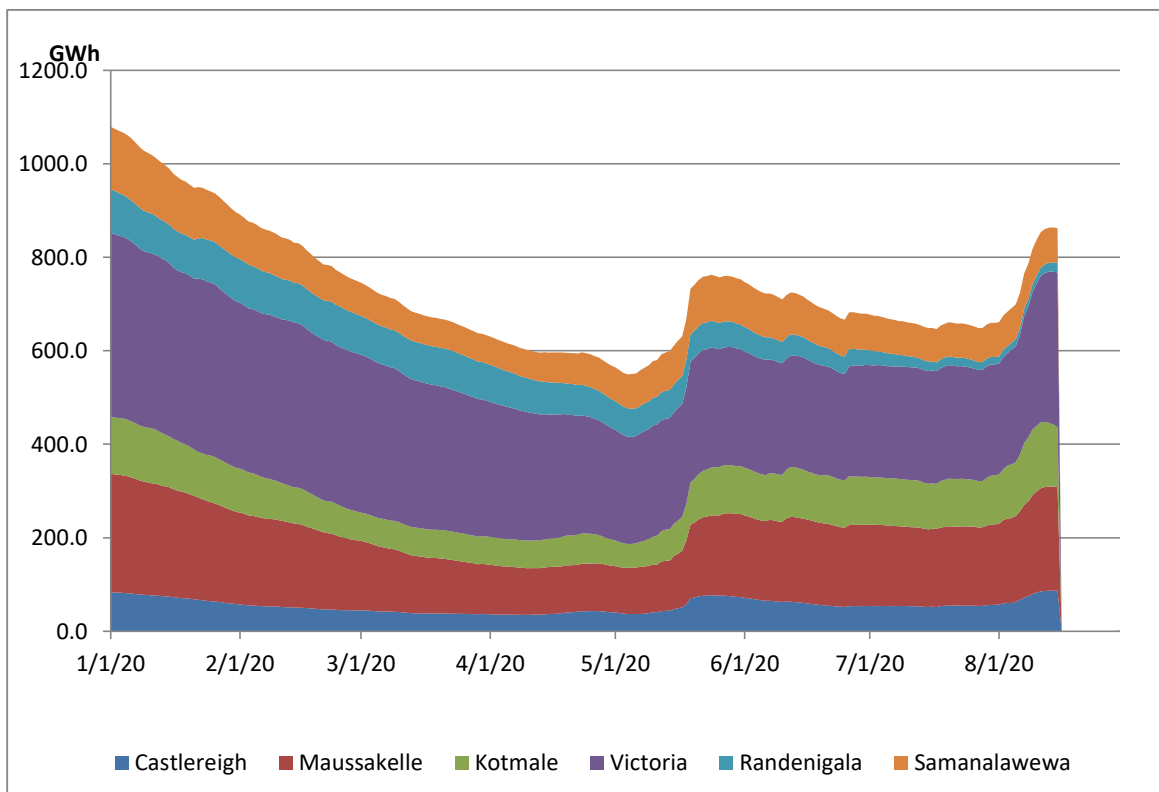
| | |
|----------------------------|-------|
| Total Reservoir Level(GWh) | 861.9 |
| % of Total capacity | 71.5% |

Comparison of Total Reservoir Storage Levels with Past Years

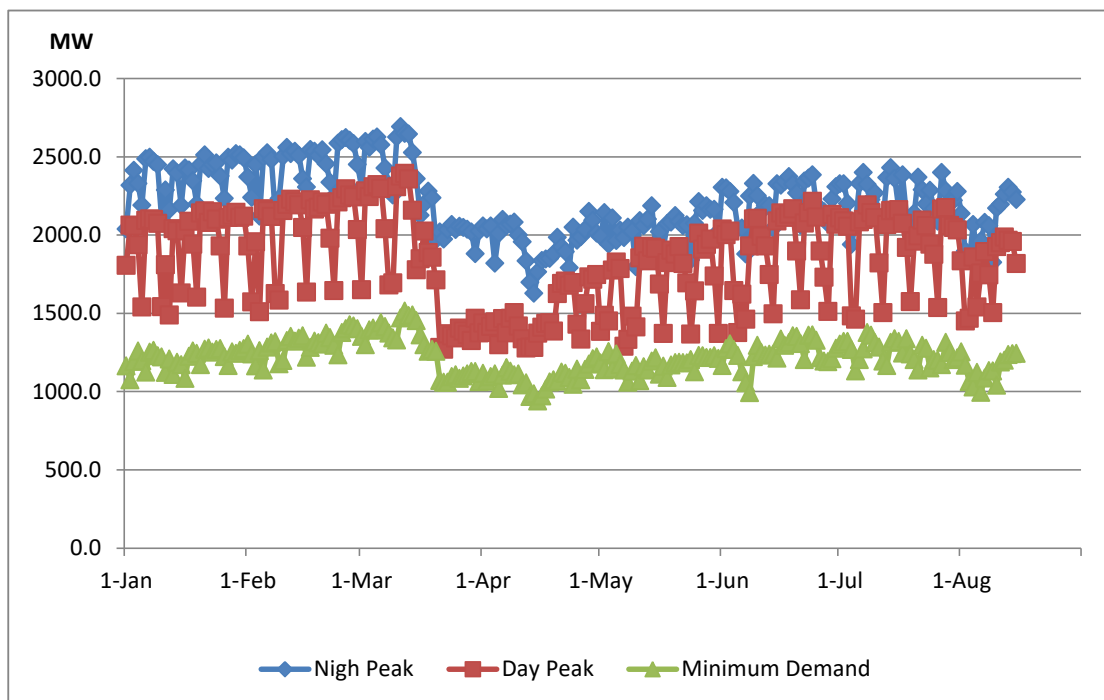
Data from June 2018 to March 2020 are not indicated in the graph



Variation of Major Hydro Reservoir Levels in the current year (GWh)



Variation of Demand during the current year



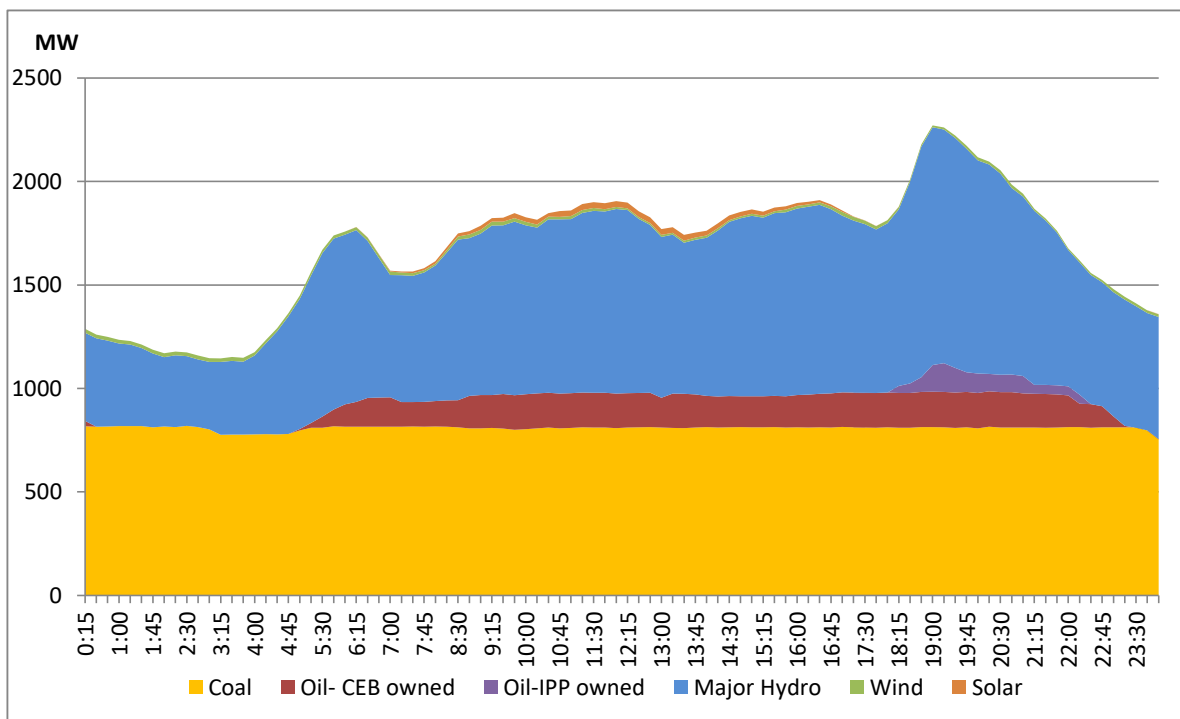
Notes: The night peak graph in the above chart is revised from June 8, 2020 to exclude the contribution from Mini hydro and biomass power plants contribution

Day peak and minimum demand graphs includes the contribution from Moragahakanda power plant

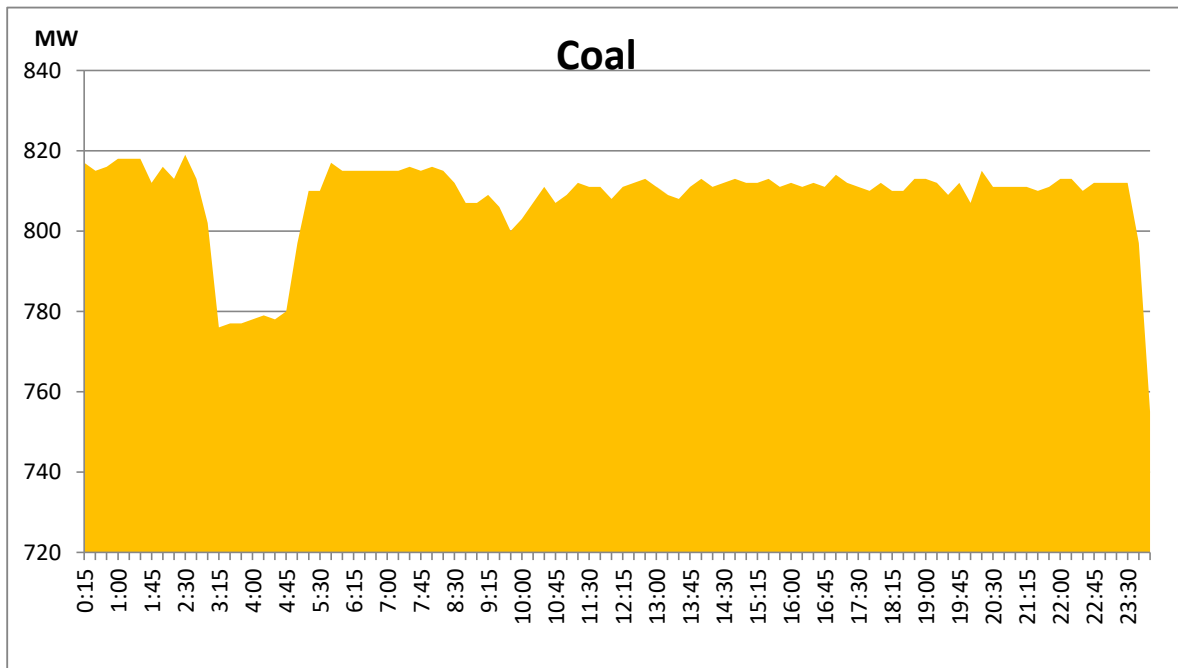
All graphs include the contribution telemetered from solar and wind plants

Daily Load Curve - August 14, 2020

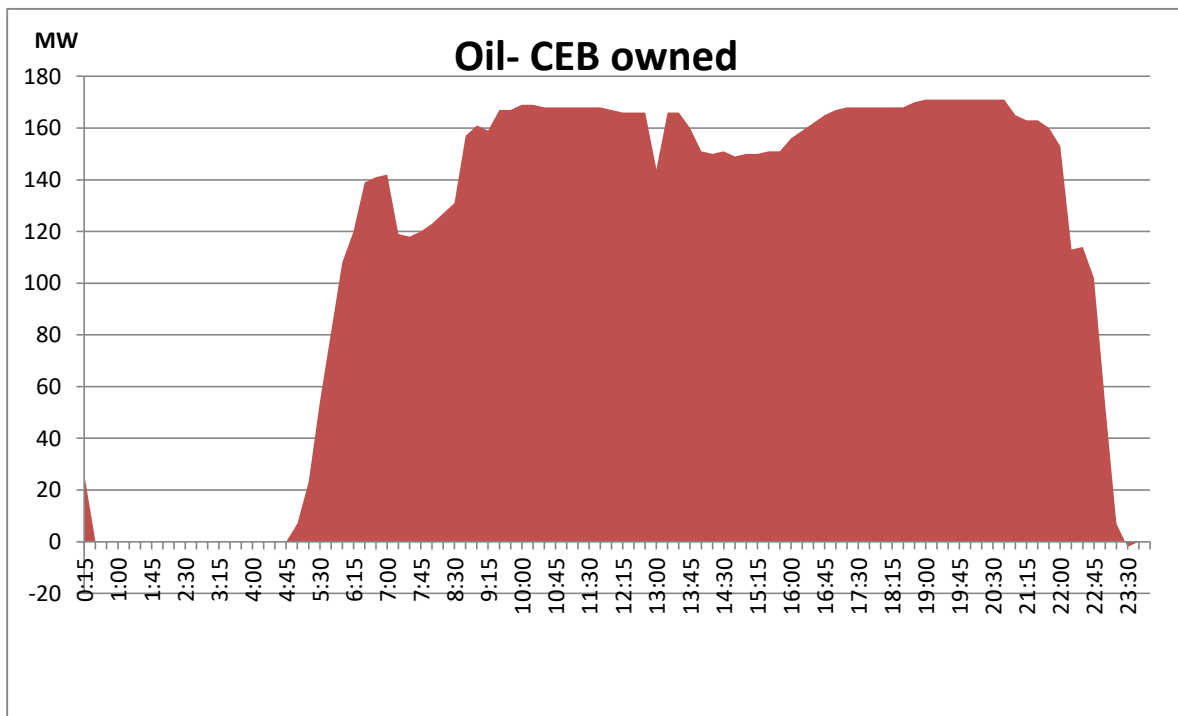
Solar and wind data is based on Telemetered Power Stations only



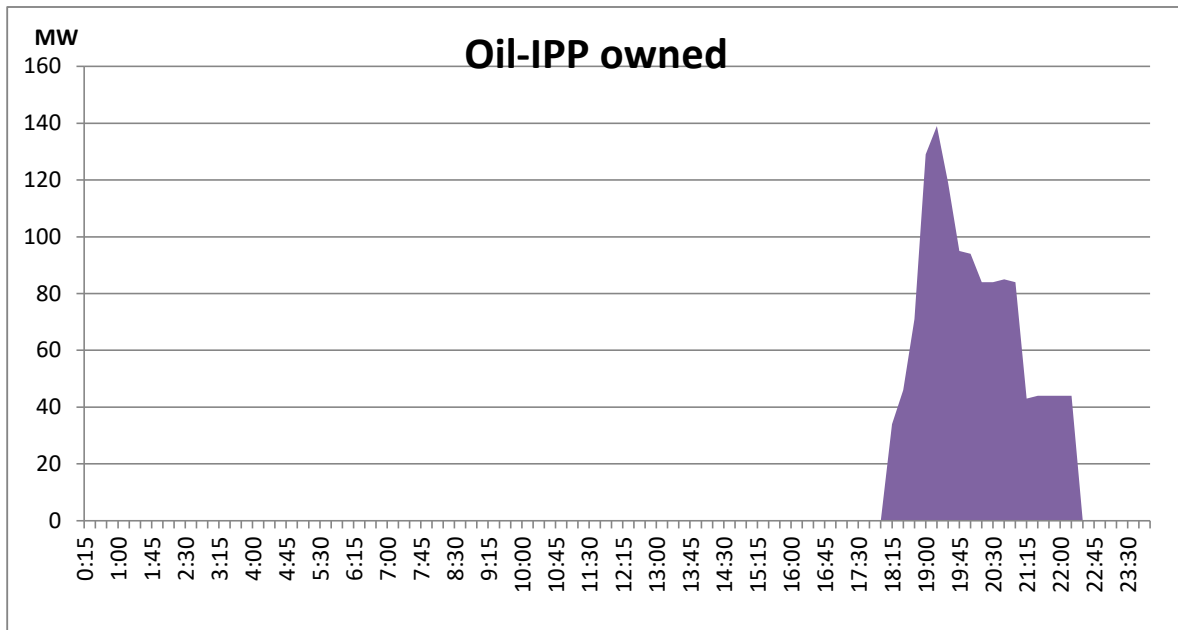
Coal generation during the day, August 14, 2020



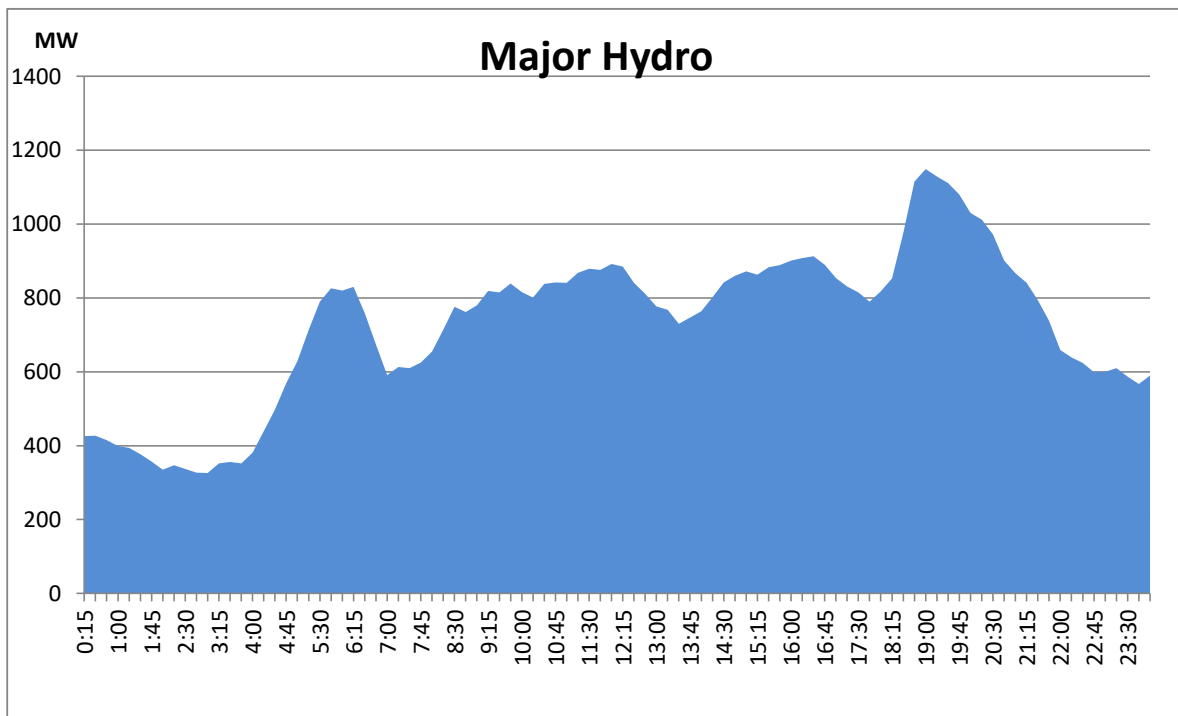
CEB Oil plant generation during, August 14, 2020



IPP Oil Plant generation during , August 14, 2020

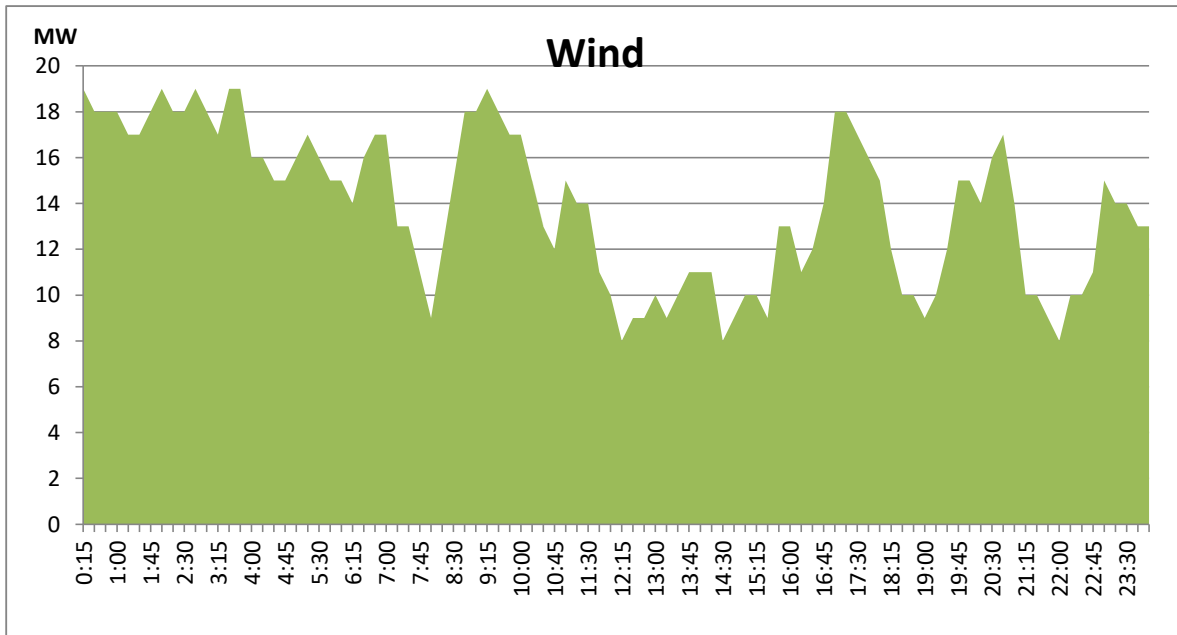


Major Hydro generation during the August 14, 2020



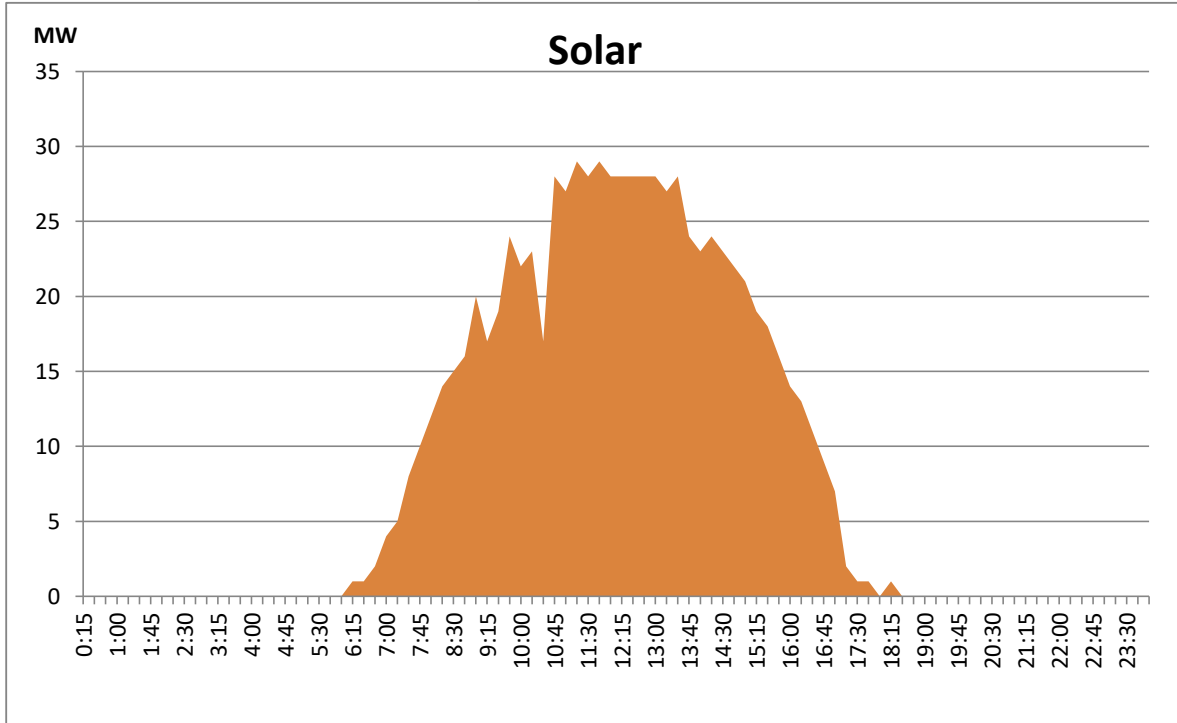
Wind generation during the day, August 14, 2020

Based on Telemetered Power Stations only



Solar generation during the day, August 14, 2020

Based on Telemetered Power Stations only



| Power Station | Capacity (MW) | Primary Fuel |
|-------------------------------|---------------|-------------------------|
| CEB Hydro | | |
| Victoria | 210 | |
| Ukuwela | 40 | |
| Kotmale | 201 | |
| Randenigala | 122 | |
| Rantambe | 49 | |
| Bowatenna | 40 | |
| Nilambe | 3.2 | |
| Upper Kotmale | 150 | |
| Old Laxapana | 50 | |
| New Laxapana | 115 | |
| Polpitiya | 75 | |
| Wimalasurendra | 50 | |
| Canyon | 60 | |
| Samanalawewa | 120 | |
| Kukuleganga | 75 | |
| Inginiyagala | 10 | |
| Udawalawe | 6 | |
| | | |
| CEB Thermal | | |
| Sapugaskanda 1 | 72 | Heavy Fuel |
| Sapugaskanda 2 | 72 | Heavy Fuel |
| Kelanitissa Small Gas Turb | 68 | Auto Diesel |
| GT 7 - Kelanitissa | 115 | Auto Diesel |
| Kelanitissa CCY | 165 | Naptha & Diesel |
| Lakvijaya (Puttalam Coal) | 275 | Coal |
| Lakvijaya (Puttalam Coal) | 275 | Coal |
| Lakvijaya (Puttalam Coal) | 275 | Coal |
| Uthuru Janani | 24 | Heavy Fuel |
| Barge CEB | 60 | Furnace Oil |
| | | |
| Private Thermal (IPPs) | | |
| Asia Power | 51 | Heavy Fuel |
| Sojitz - Kelanitissa | 163 | Auto Diesel |
| West Coast | 270 | Low Sulphur Furnace oil |
| | | |
| ACE Embilipitiya | 100 | Furnace Oil |