

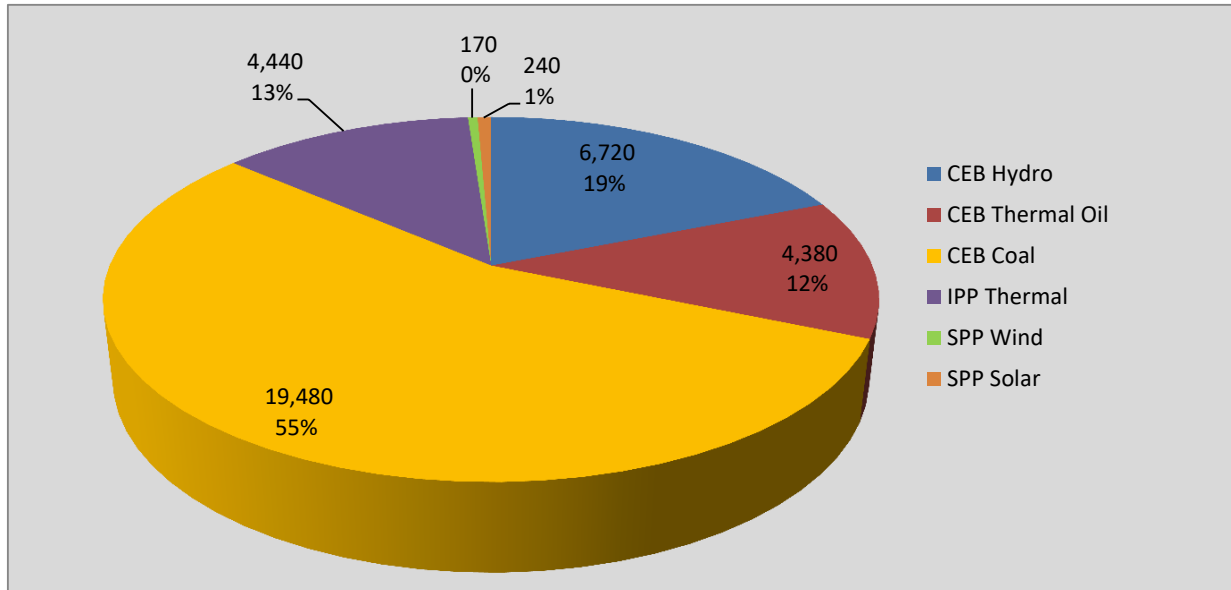
Generation and Reservoirs Statistics

July 19, 2020



PUBLIC UTILITIES COMMISSION OF SRI LANKA

Daily Generation Mix in MWh



Total Generation 35,420 MWh

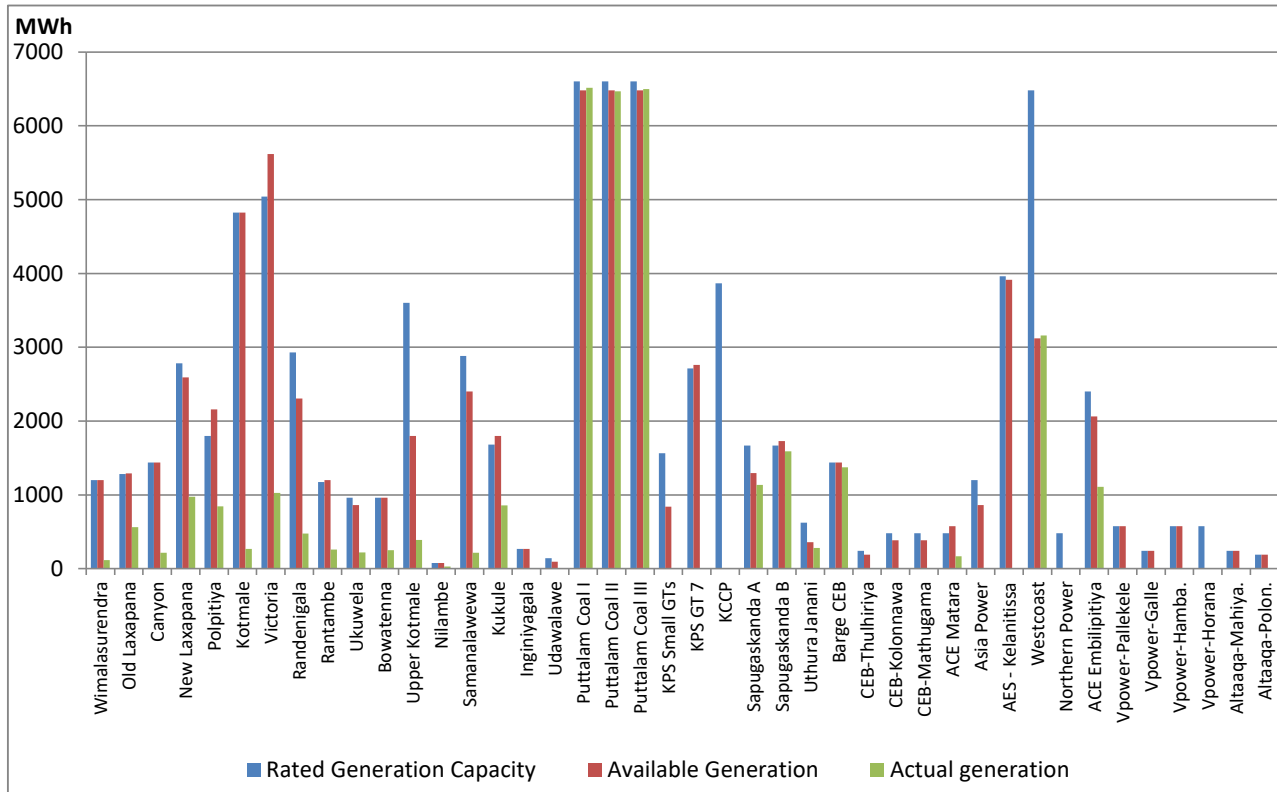
Note: Generation from other SPPs (Mini Hydro, small scale Solar and Biomass) is not included

Cumulative Dispatch

For Current Month

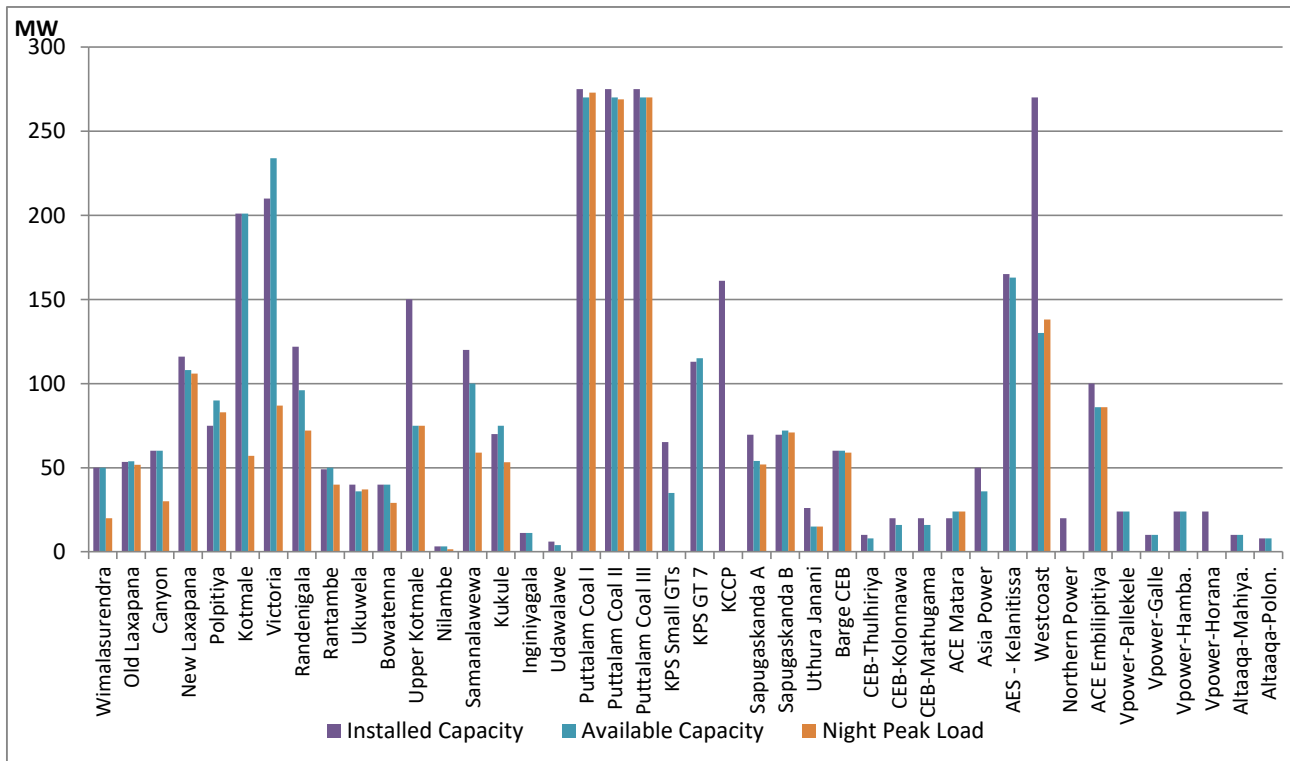
Category	Dispatch (MWh)	
CEB Hydro	165.4	21.01%
CEB Thermal Oil	76.2	9.68%
CEB Coal	367.1	46.63%
IPP Thermal	146.1	18.55%
SPP Wind	27.3	3.47%
SPP Solar	5.3	0.67%
Total	787.3	

Plant Dispatch on July 19, 2020



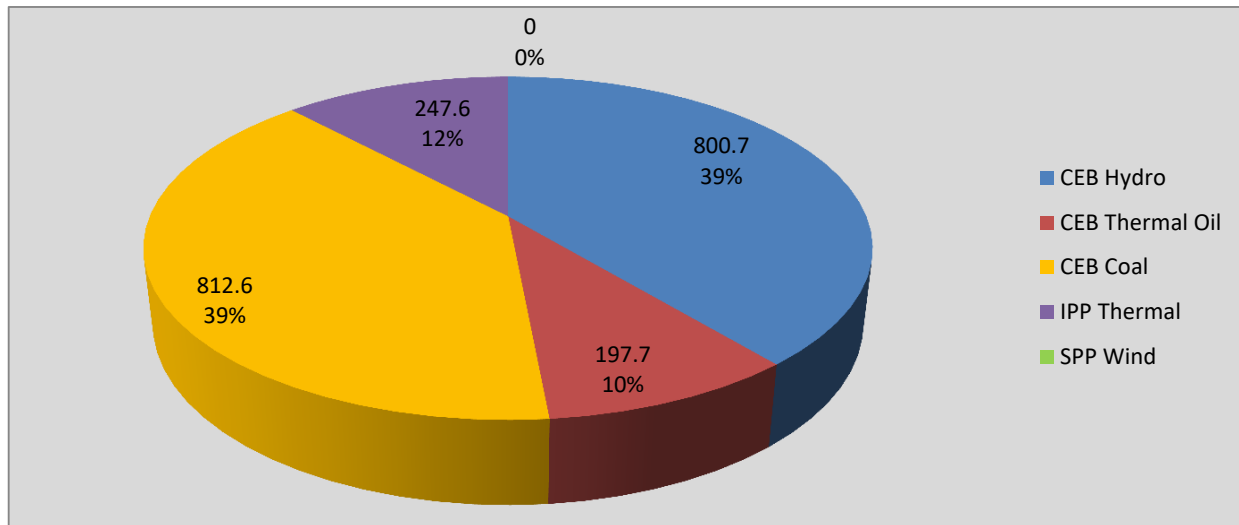
Note- Available Generation is estimated based on plant availability at 6.00am on July 20, 2020

Plant Loading at Night Peak on July 19, 2020



Note- Plant availability is recorded at 6.00 am on July 20, 2020

Contribution to the Night Peak in MW



Night Peak*	2,058.7 MW
Day Peak	1,573.6 MW
Minimum Demand	1,239.7 MW

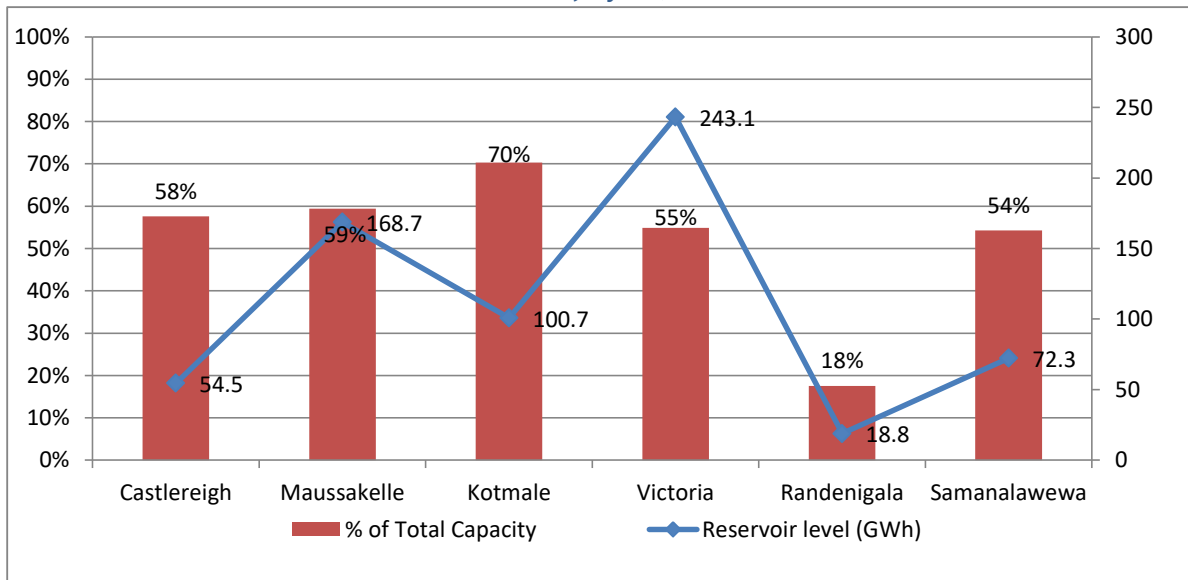
Note:

*The above chart pattern and night peak figure is presented excluding the contribution of Moragahakanda, other mini hydro and biomass power plants from June 8 2020 onwards

**Day peak and Minimum demand includes the contribution from Moragahakanda, wind and solar plants

* in addition to the night peak figure presented above, Moragahakanda plant, other MiniHydro and Biomass Plants of installed capacity 232.00 MW has recorded total 95.00 MW at the night peak

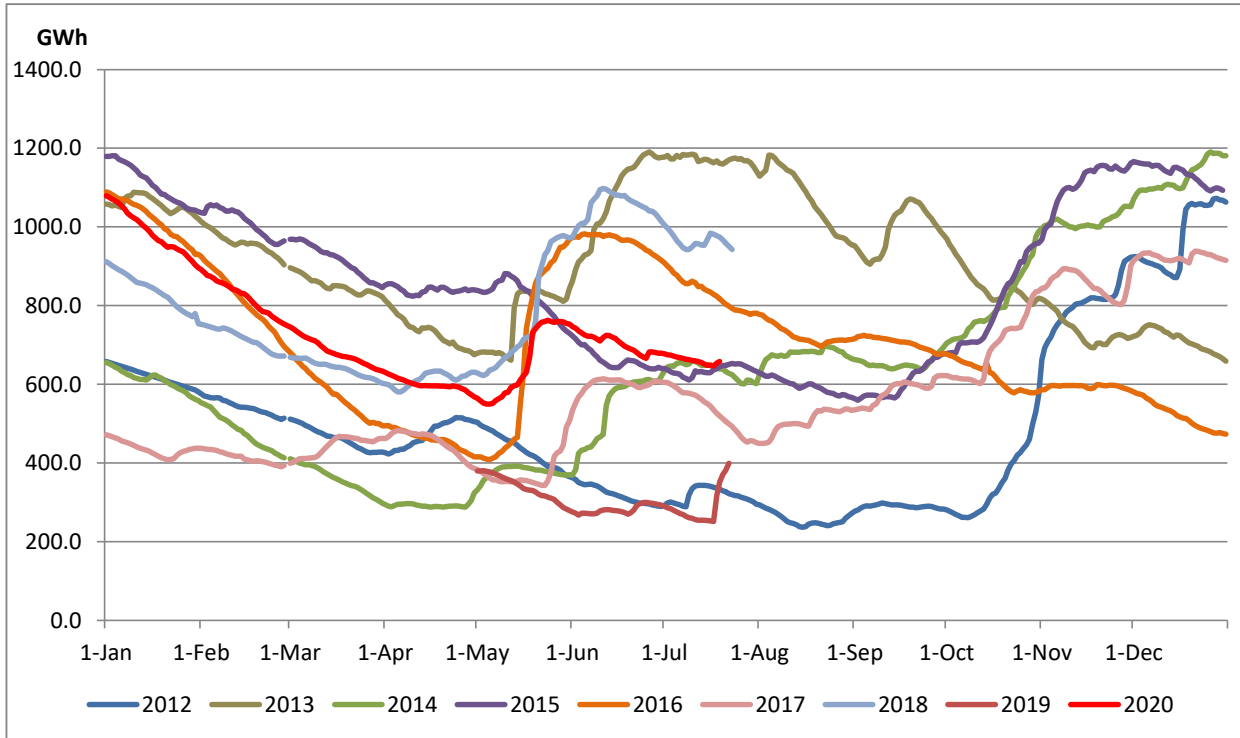
Reservoir Levels - as at 06.00 Hr on July 20, 2020



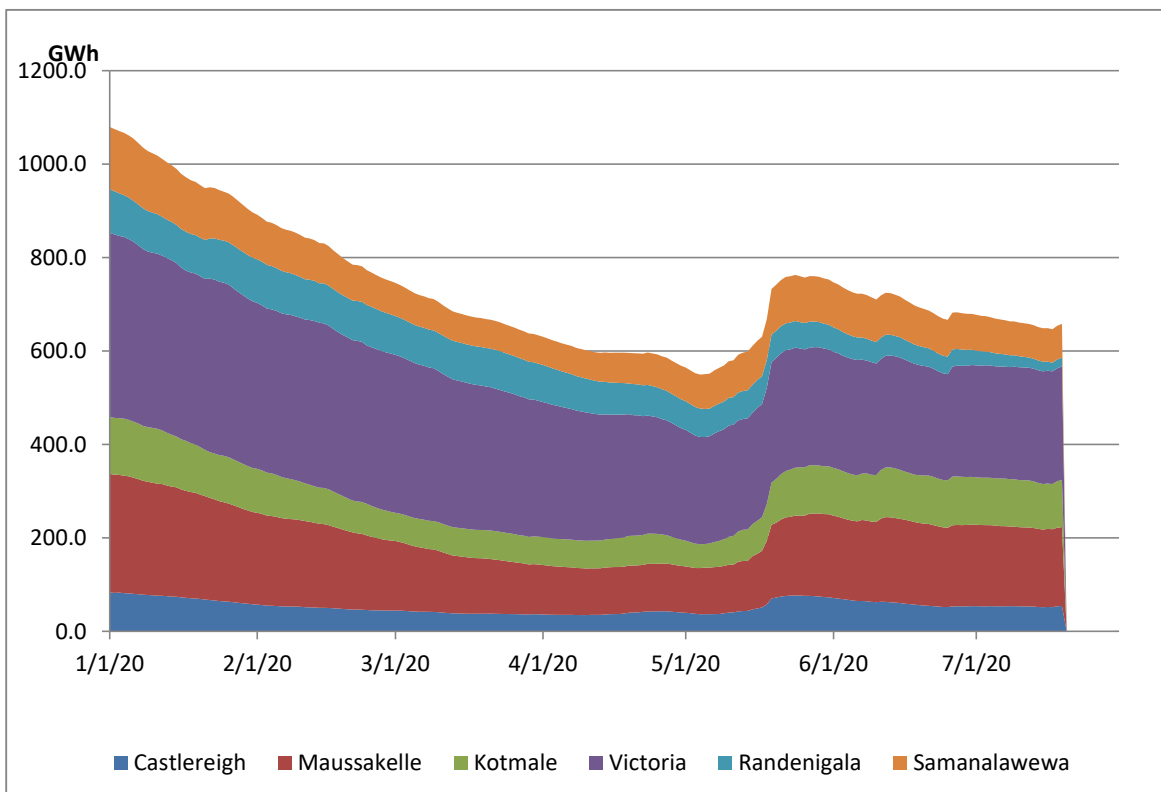
Total Reservoir Level(GWh)	658.1
% of Total capacity	54.6%

Comparison of Total Reservoir Storage Levels with Past Years

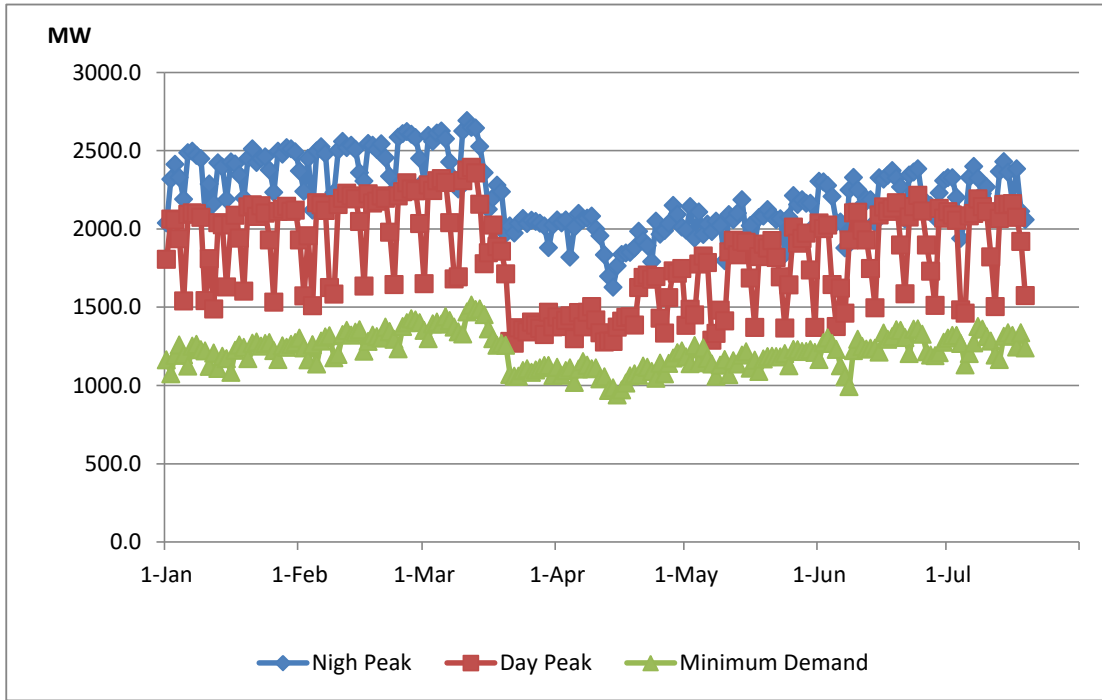
Data from June 2018 to March 2020 are not indicated in the graph



Variation of Major Hydro Reservoir Levels in the current year (GWh)



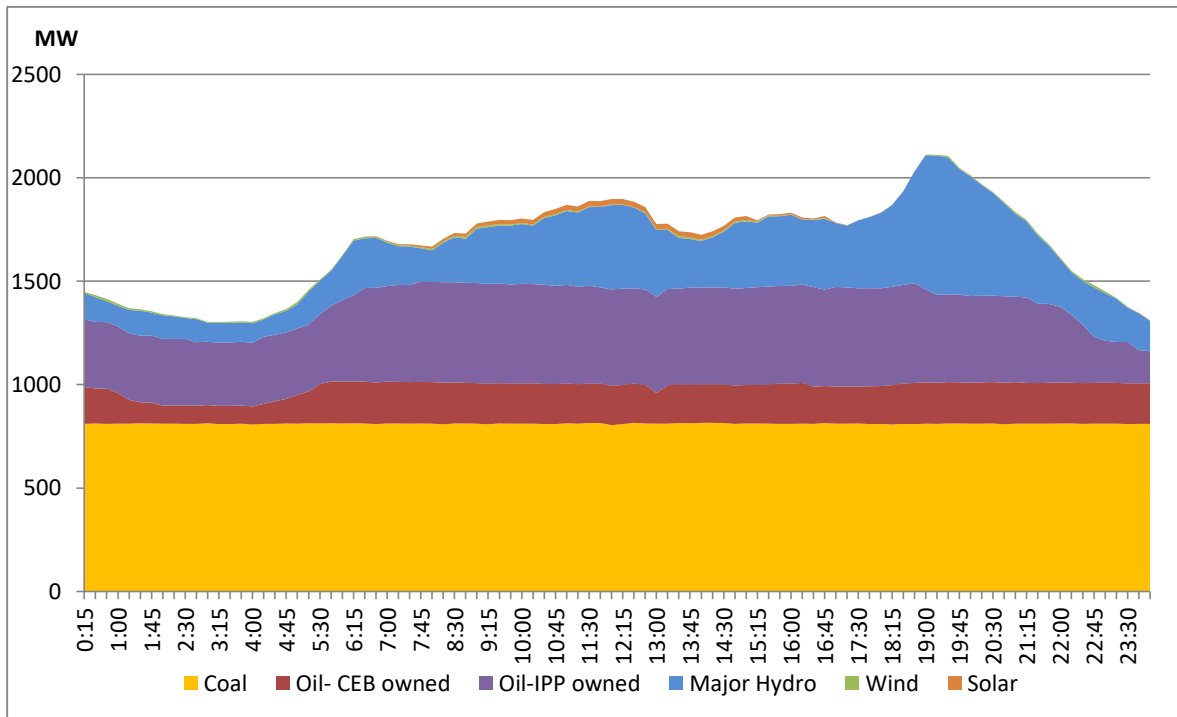
Variation of Demand during the current year



Notes: The night peak graph in the above chart is revised from June 8, 2020 to exclude the contribution from Mini hydro and biomass power plants contribution
 Day peak and minimum demand graphs includes the contribution from Moragahakanda power plant
 All graphs include the contribution telemetered from solar and wind plants

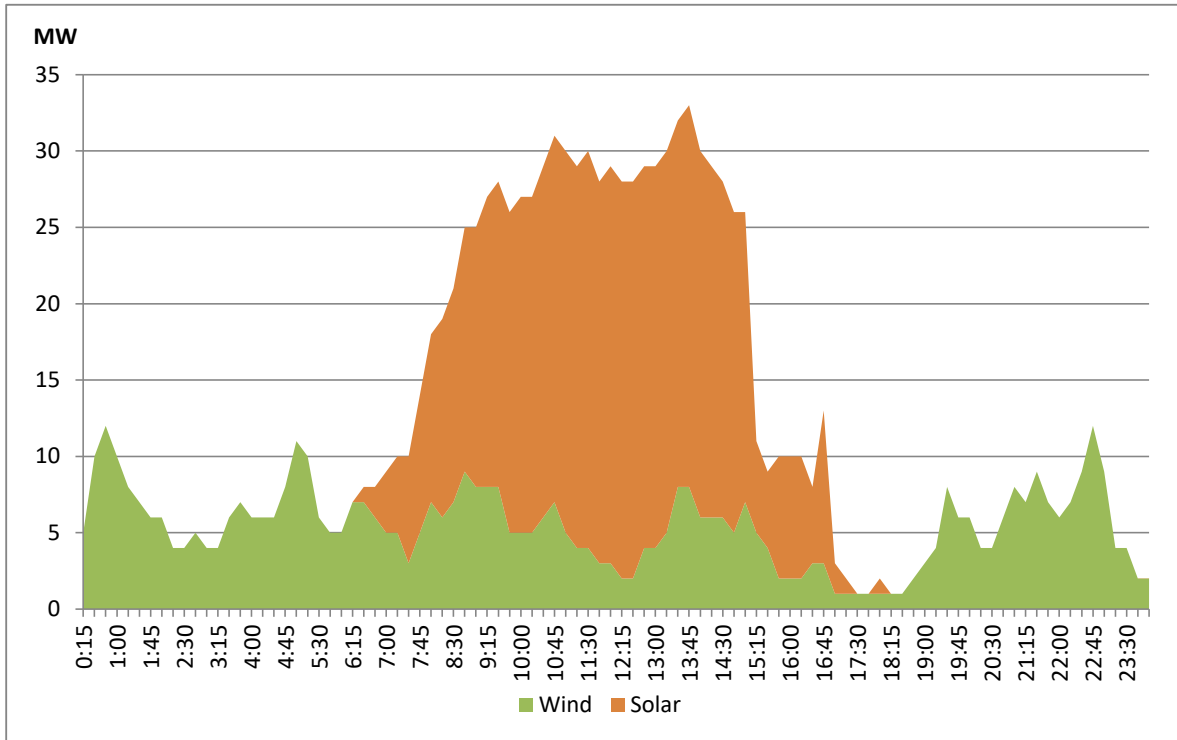
Daily Load Curve - July 18, 2020

Solar, Wind and Mini hydro data is based on Telemetered Power Stations only



Solar and Wind profiles of the day, July 18, 2020

Based on Telemetered Power Stations only



Power Station	Capacity (MW)	Primary Fuel
CEB Hydro		
Victoria	210	
Ukuwela	40	
Kotmale	201	
Randenigala	122	
Rantambe	49	
Bowatenna	40	
Nilambe	3.2	
Upper Kotmale	150	
Old Laxapana	50	
New Laxapana	115	
Polpitiya	75	
Wimalasurendra	50	
Canyon	60	
Samanalawewa	120	
Kukuleganga	75	
Inginiyagala	10	
Udawalawe	6	
CEB Thermal		
Sapugaskanda 1	72	Heavy Fuel
Sapugaskanda 2	72	Heavy Fuel
Kelanitissa Small Gas Turb	68	Auto Diesel
GT 7 - Kelanitissa	115	Auto Diesel
Kelanitissa CCY	165	Naptha & Diesel
Lakvijaya (Puttalam Coal)	275	Coal
Lakvijaya (Puttalam Coal)	275	Coal
Lakvijaya (Puttalam Coal)	275	Coal
Uthuru Janani	24	Heavy Fuel
Barge CEB	60	Furnace Oil
Private Thermal (IPPs)		
Asia Power	51	Heavy Fuel
Sojitz - Kelanitissa	163	Auto Diesel
West Coast	270	Low Sulphur Furnace oil
ACE Embilipitiya	100	Furnace Oil