

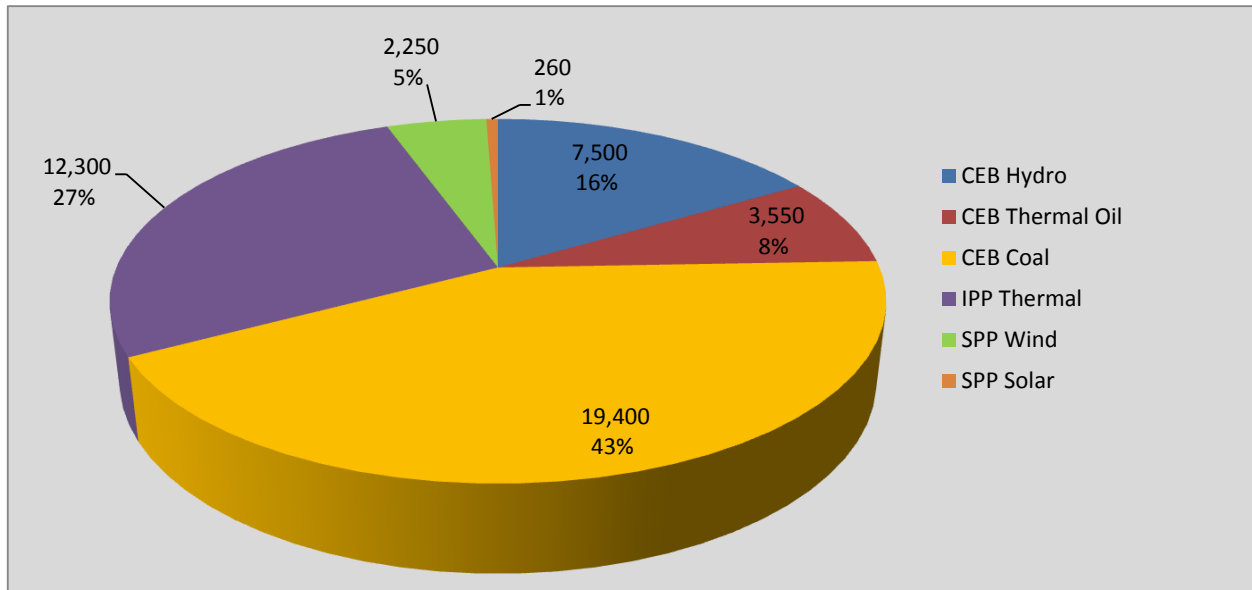
Generation and Reservoirs Statistics

July 15, 2020



PUBLIC UTILITIES COMMISSION OF SRI LANKA

Daily Generation Mix in MWh



Total Generation **45,250 MWh**

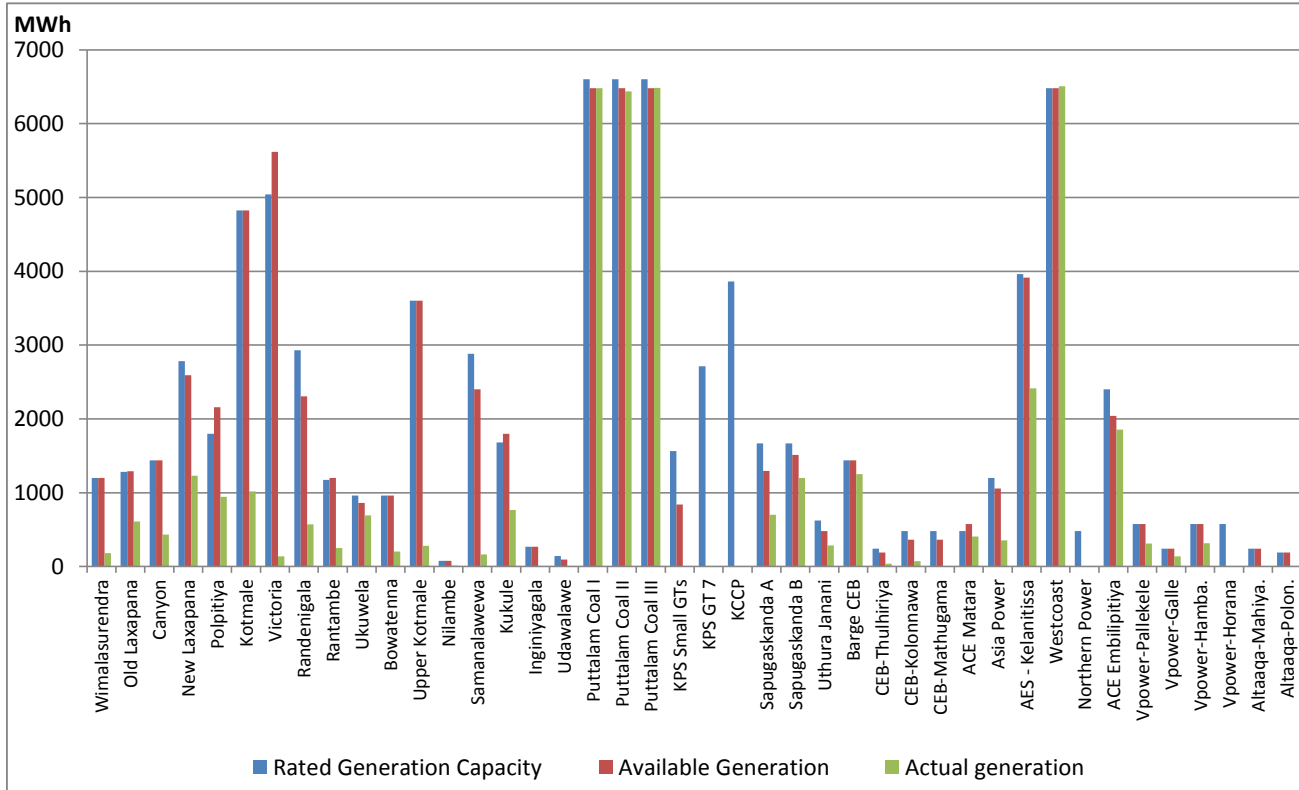
Note: Generation from other SPPs (Mini Hydro, small scale Solar and Biomass) is not included

Cumulative Dispatch

For Current Month

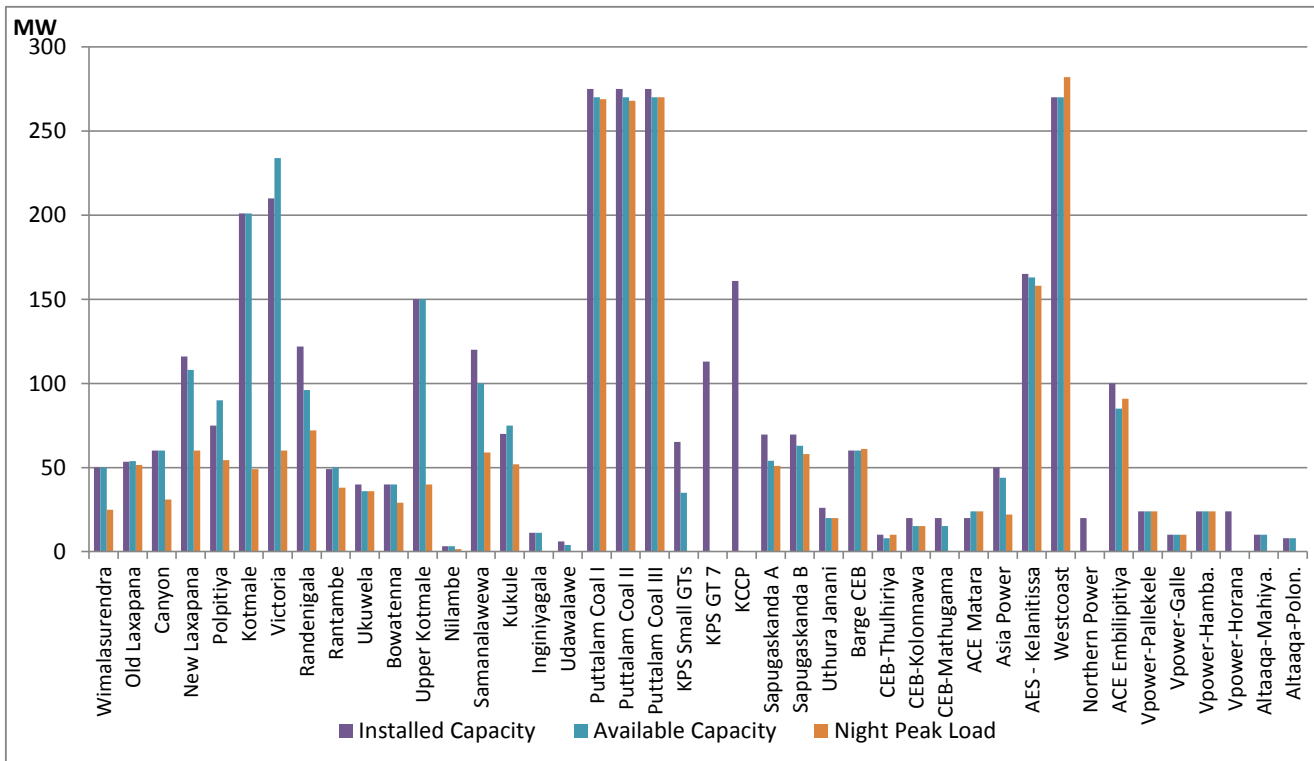
| Category | Dispatch (MWh) | Percentage |
|-----------------|----------------|------------|
| CEB Hydro | 136.5 | 21.84% |
| CEB Thermal Oil | 60.4 | 9.66% |
| CEB Coal | 289.1 | 46.25% |
| IPP Thermal | 111.1 | 17.78% |
| SPP Wind | 23.7 | 3.79% |
| SPP Solar | 4.2 | 0.67% |
| Total | 625.1 | |

Plant Dispatch on July 15, 2020



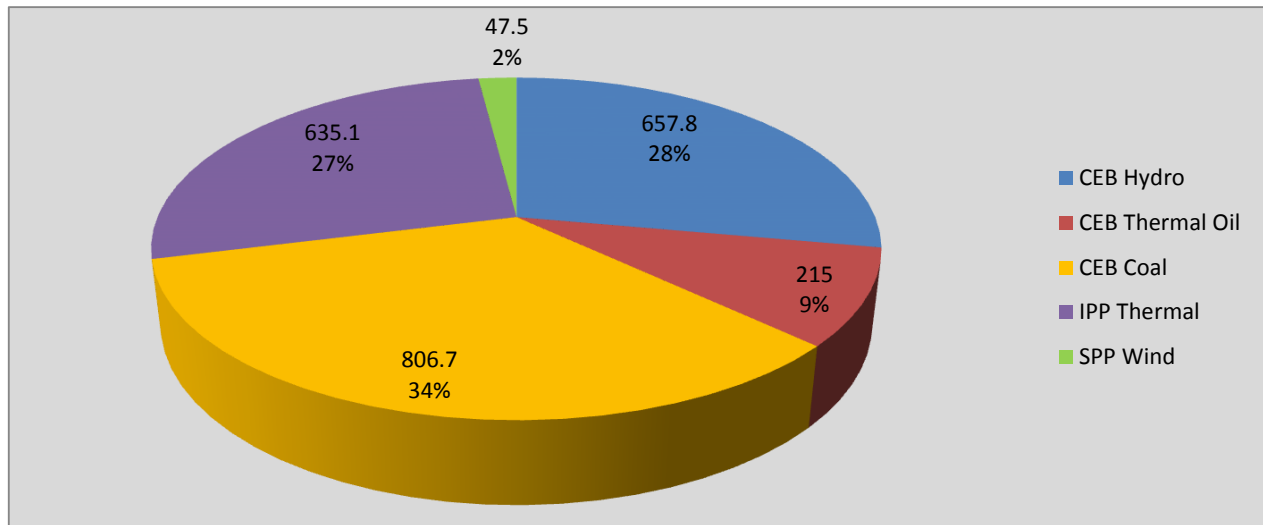
Note- Available Generation is estimated based on plant availability at 6.00am on July 16, 2020

Plant Loading at Night Peak on July 15, 2020



Note- Plant availability is recorded at 6.00 am on July 16, 2020

Contribution to the Night Peak in MW



| | |
|----------------|------------|
| Night Peak* | 2,362.0 MW |
| Day Peak | 2,157.0 MW |
| Minimum Demand | 1,337.1 MW |

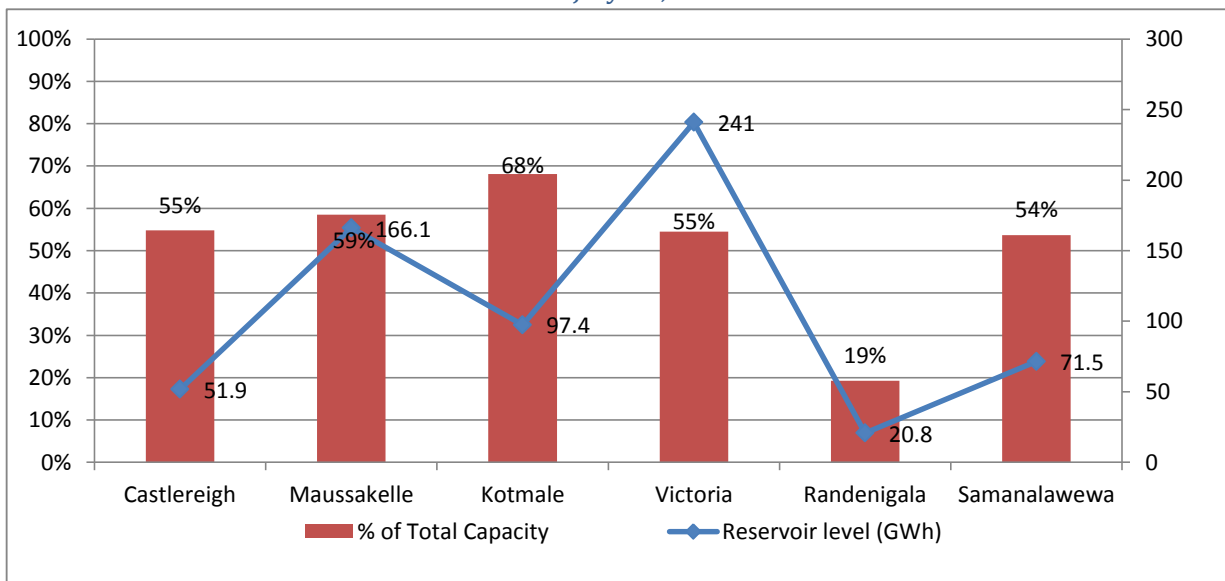
Note:

*The above chart pattern and night peak figure is presented excluding the contribution of Moragahakanda, other minihydro and biomass power plants from June 8 2020 onwards

**Day peak and Minimum demand includes the contribution from Moragahakanda, wind and solar plants

* in addition to the night peak figure presented above, Moragahakanda plant, other MiniHydro and Biomass Plants of installed capacity 213.00 MW has recorded total 74.50 MW at the night peak

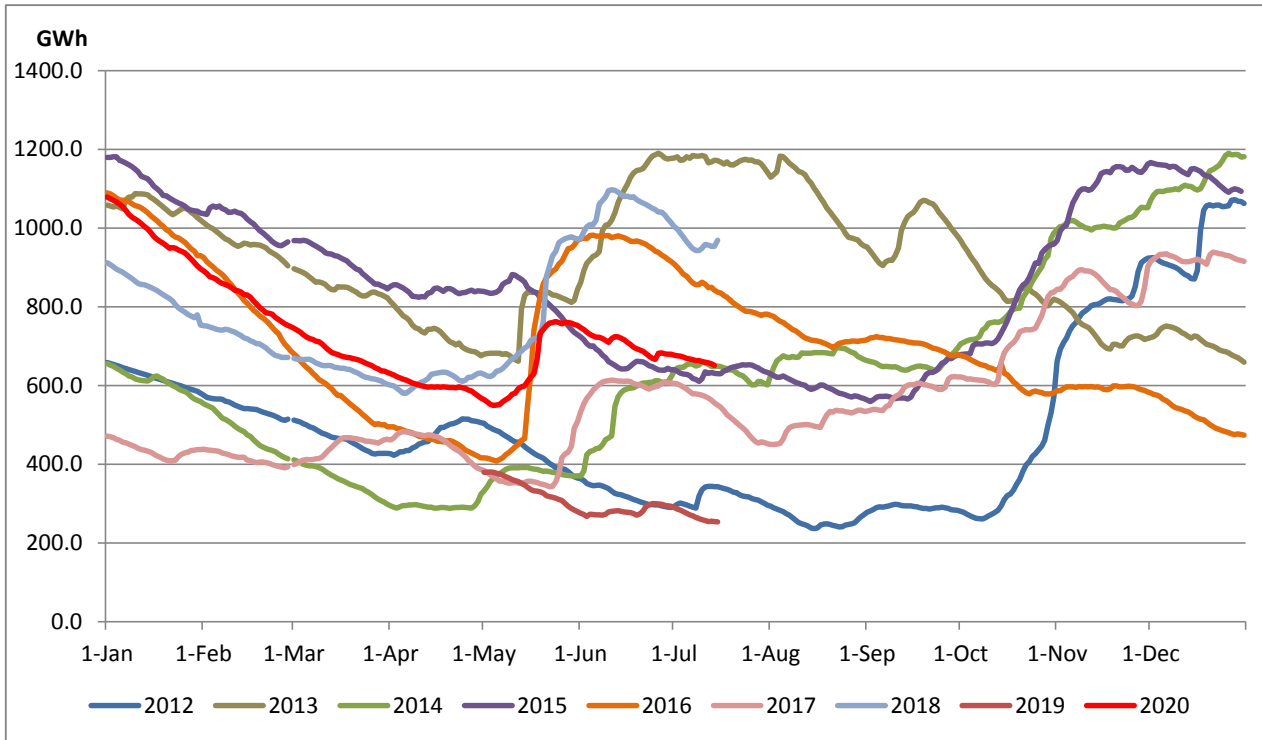
Reservoir Levels - as at 06.00 Hr on July 16, 2020



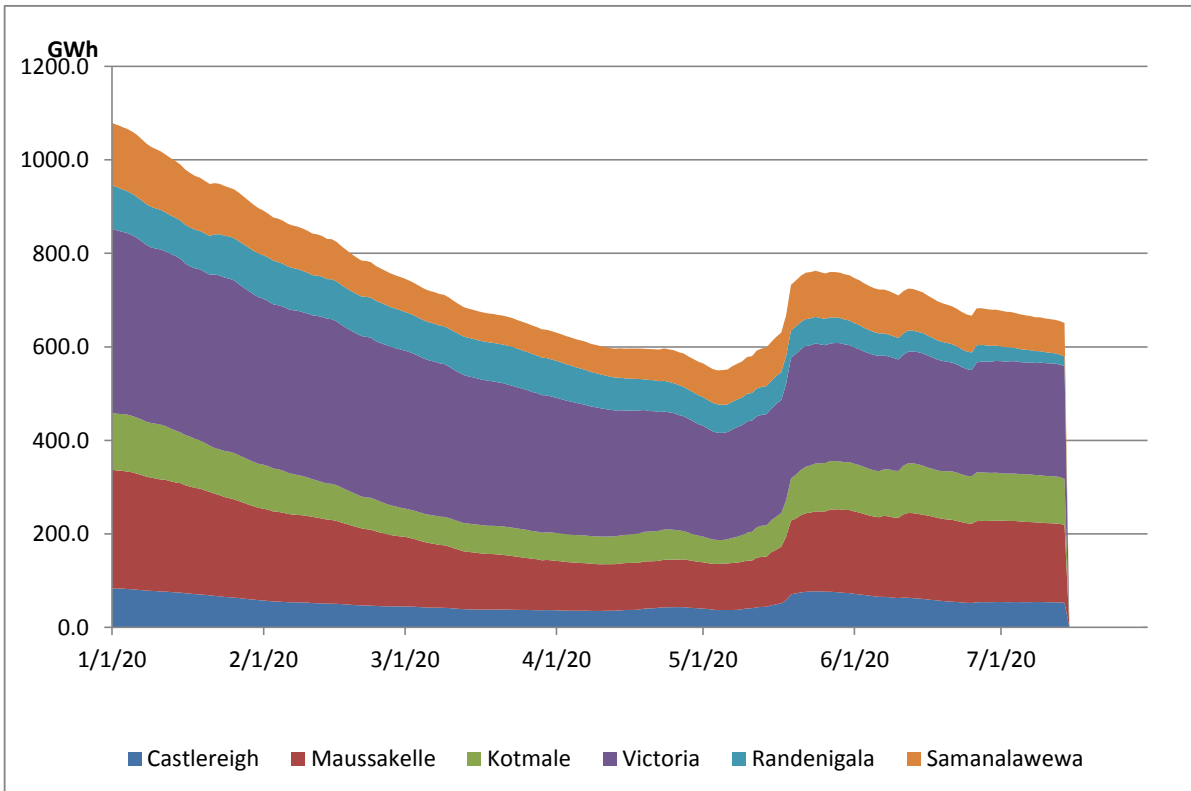
| | |
|----------------------------|-------|
| Total Reservoir Level(GWh) | 648.7 |
| % of Total capacity | 53.8% |

Comparison of Total Reservoir Storage Levels with Past Years

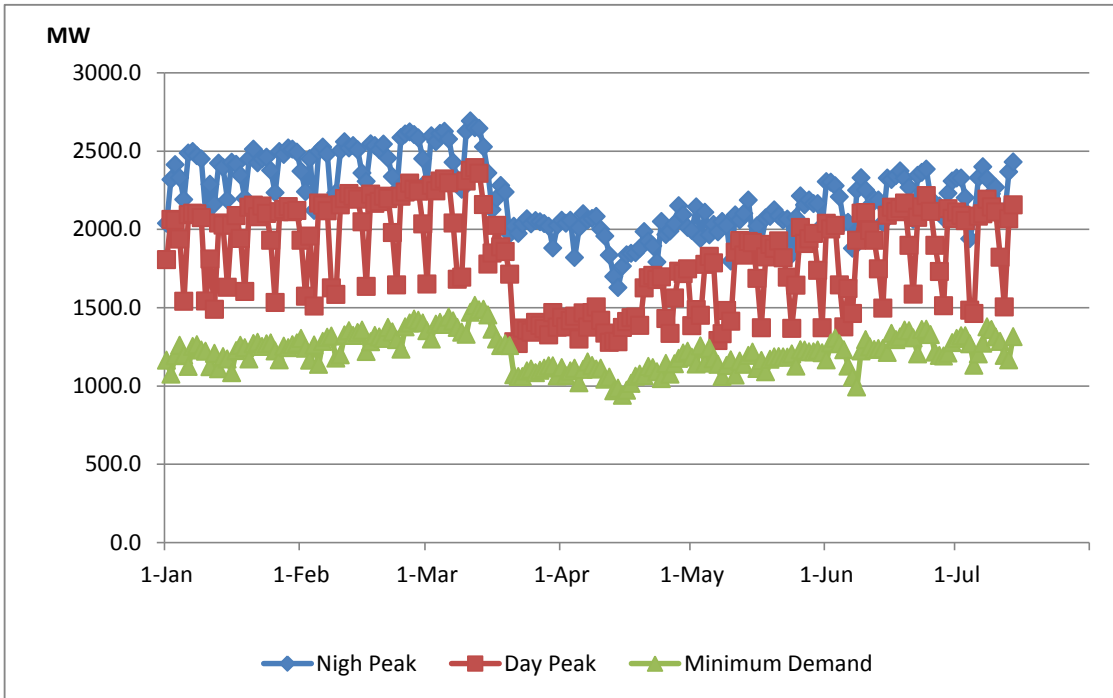
Data from June 2018 to March 2020 are not indicated in the graph



Variation of Major Hydro Reservoir Levels in the current year (GWh)



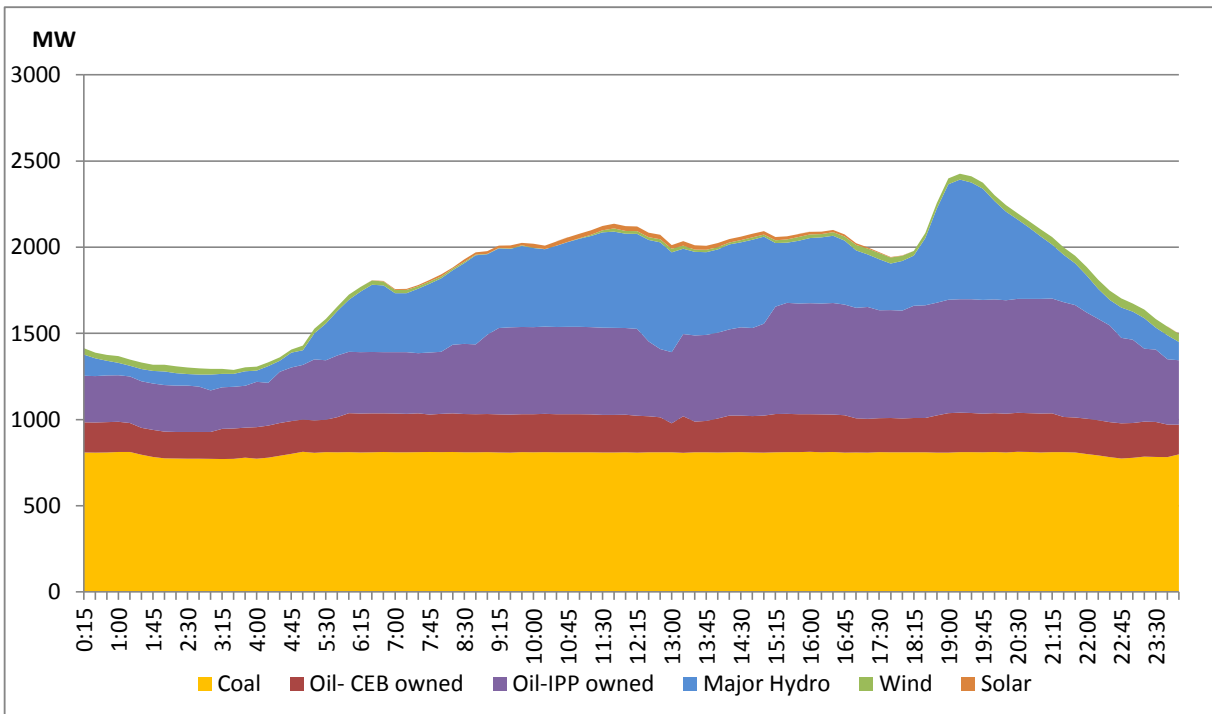
Variation of Demand during the current year



Notes: The night peak graph in the above chart is revised from June 8, 2020 to exclude the contribution from Minihydro and biomass power plants contribution
 Day peak and minimum demand graphs includes the contribution from Moragahakanda power plant
 All graphs include the contribution telemetered from solar and wind plants

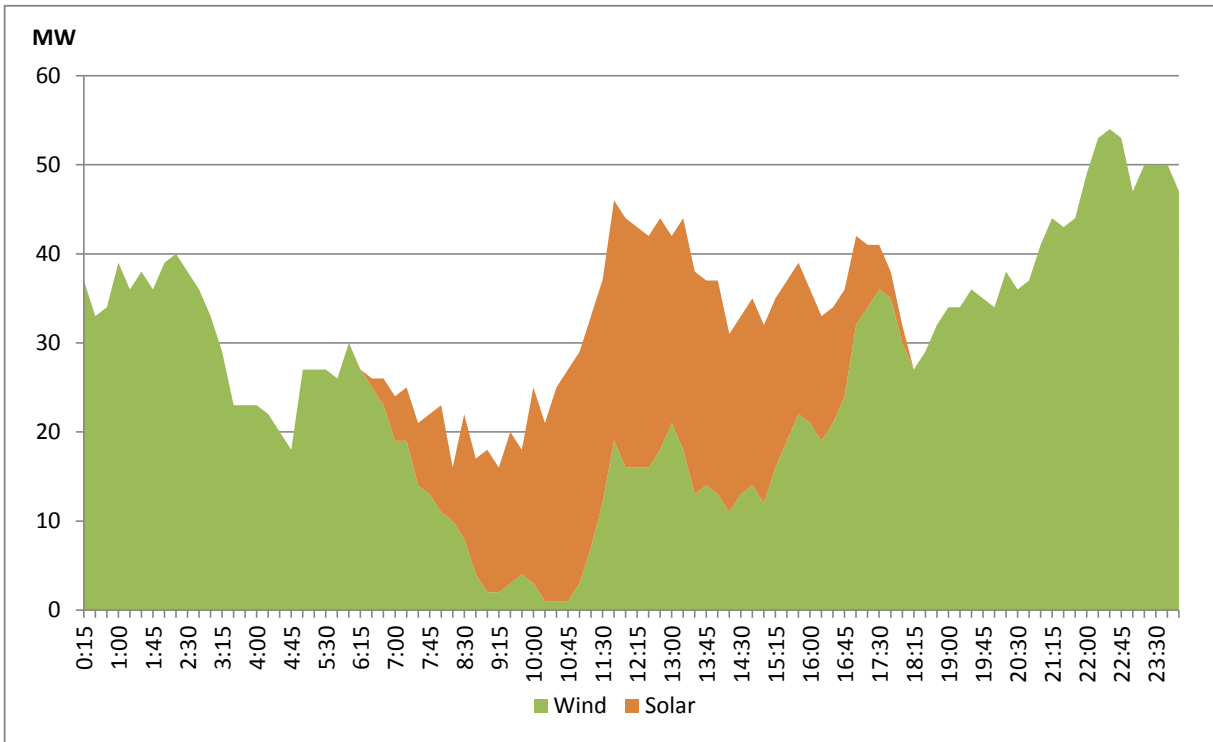
Daily Load Curve - July 14, 2020

Solar, Wind and Minihydro data is based on Telemetered Power Stations only



Solar and Wind profiles of the day, July 14, 2020

Based on Telemetered Power Stations only



| Power Station | Capacity (MW) | Primary Fuel |
|-------------------------------|----------------------|-------------------------|
| CEB Hydro | | |
| Victoria | 210 | |
| Ukuwela | 40 | |
| Kotmale | 201 | |
| Randenigala | 122 | |
| Rantambe | 49 | |
| Bowatenna | 40 | |
| Nilambe | 3.2 | |
| Upper Kotmale | 150 | |
| Old Laxapana | 50 | |
| New Laxapana | 115 | |
| Polpitiya | 75 | |
| Wimalasurendra | 50 | |
| Canyon | 60 | |
| Samanalawewa | 120 | |
| Kukuleganga | 75 | |
| Inginiyagala | 10 | |
| Udawalawe | 6 | |
| | | |
| CEB Thermal | | |
| Sapugaskanda 1 | 72 | Heavy Fuel |
| Sapugaskanda 2 | 72 | Heavy Fuel |
| Kelanitissa Small Gas Turb | 68 | Auto Diesel |
| GT 7 - Kelanitissa | 115 | Auto Diesel |
| Kelanitissa CCY | 165 | Naptha & Diesel |
| Lakvijaya (Puttalam Coal) | 275 | Coal |
| Lakvijaya (Puttalam Coal) | 275 | Coal |
| Lakvijaya (Puttalam Coal) | 275 | Coal |
| Uthuru Janani | 24 | Heavy Fuel |
| Barge CEB | 60 | Furnace Oil |
| | | |
| Private Thermal (IPPs) | | |
| Asia Power | 51 | Heavy Fuel |
| Sojitz - Kelanitissa | 163 | Auto Diesel |
| West Coast | 270 | Low Sulphur Furnace oil |
| | | |
| ACE Embilipitiya | 100 | Furnace Oil |