

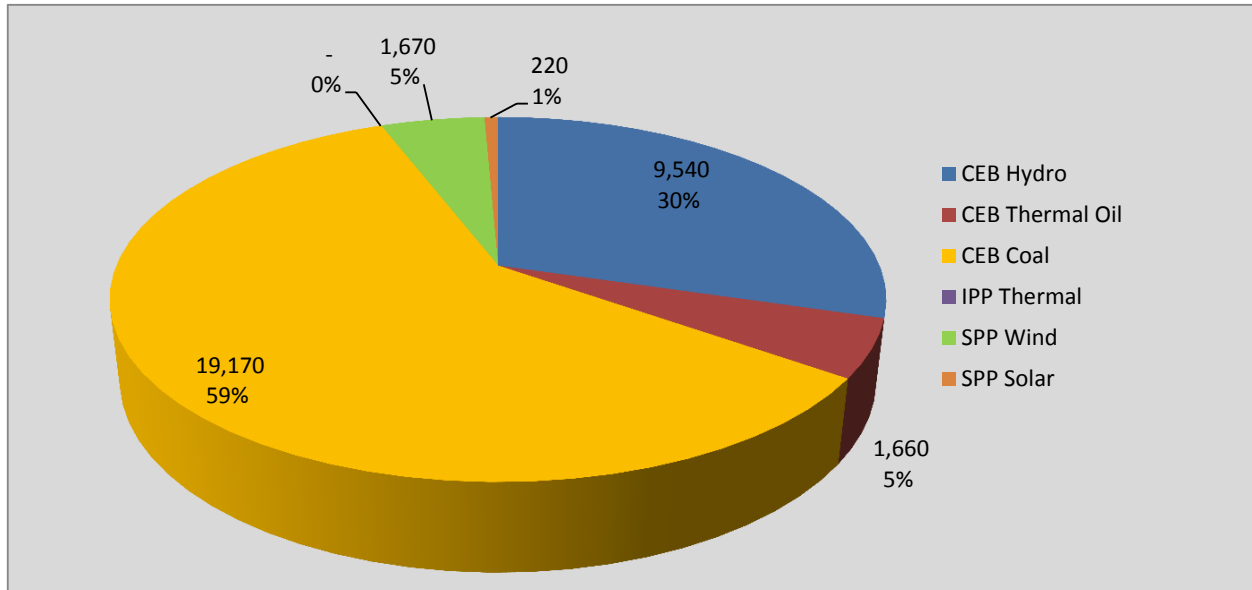
Generation and Reservoirs Statistics

June 7, 2020



PUBLIC UTILITIES COMMISSION OF SRI LANKA

Daily Generation Mix in MWh



Total Generation 32,240 MWh

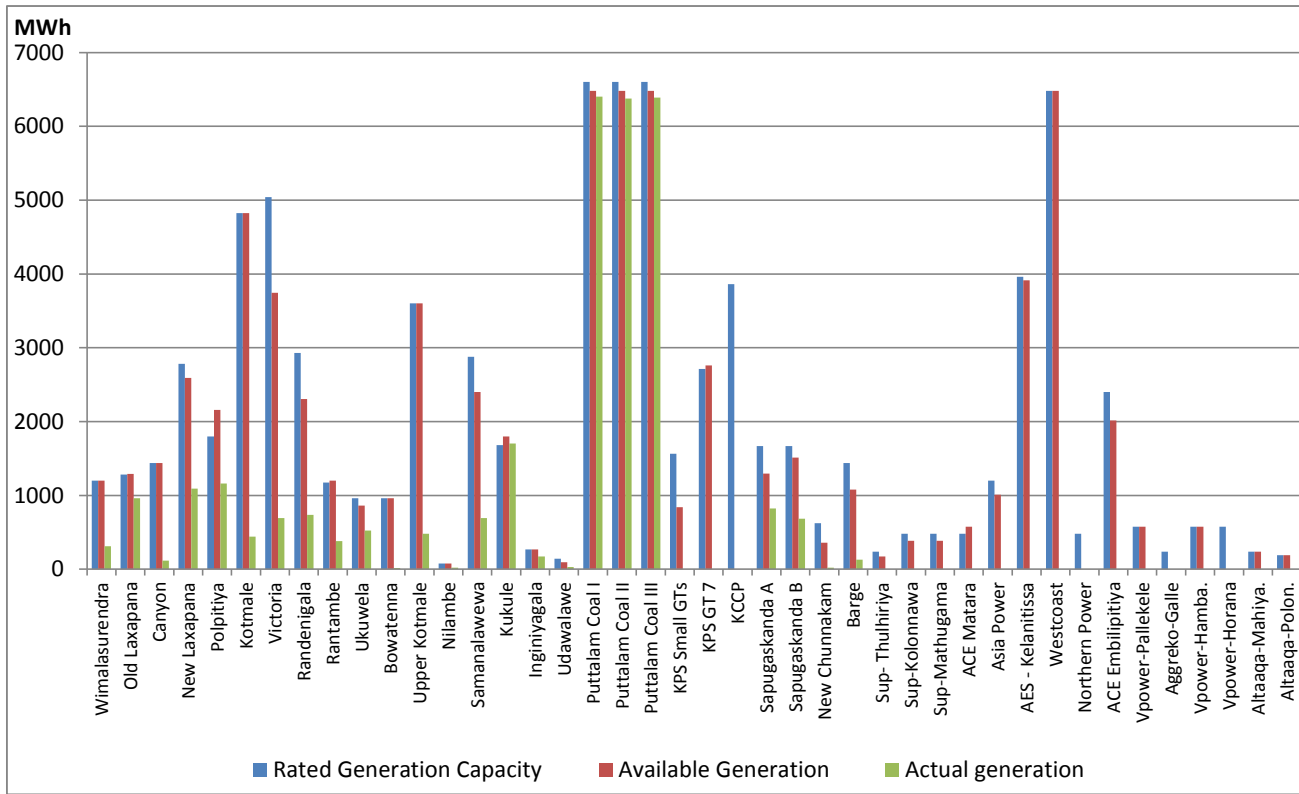
Note: Generation from other SPPs (Mini Hydro, small scale Solar and Biomass) is not included

Cumulative Dispatch

For Current Month

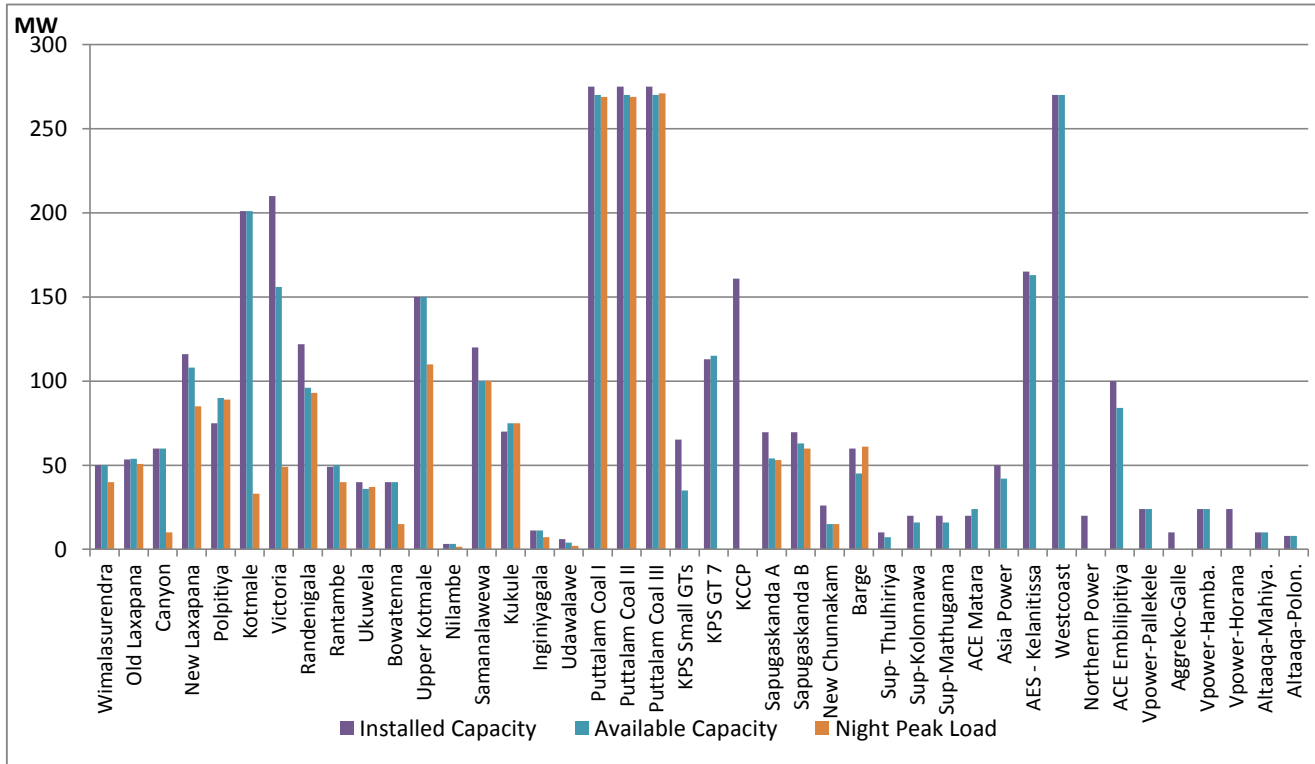
Category	Dispatch (MWh)	Percentage
CEB Hydro	75.9	28.29%
CEB Thermal Oil	23.8	8.88%
CEB Coal	135.6	50.53%
IPP Thermal	17.6	6.54%
SPP Wind	13.5	5.01%
SPP Solar	2.1	0.78%
Total	268.3	

Plant Dispatch on June 7, 2020



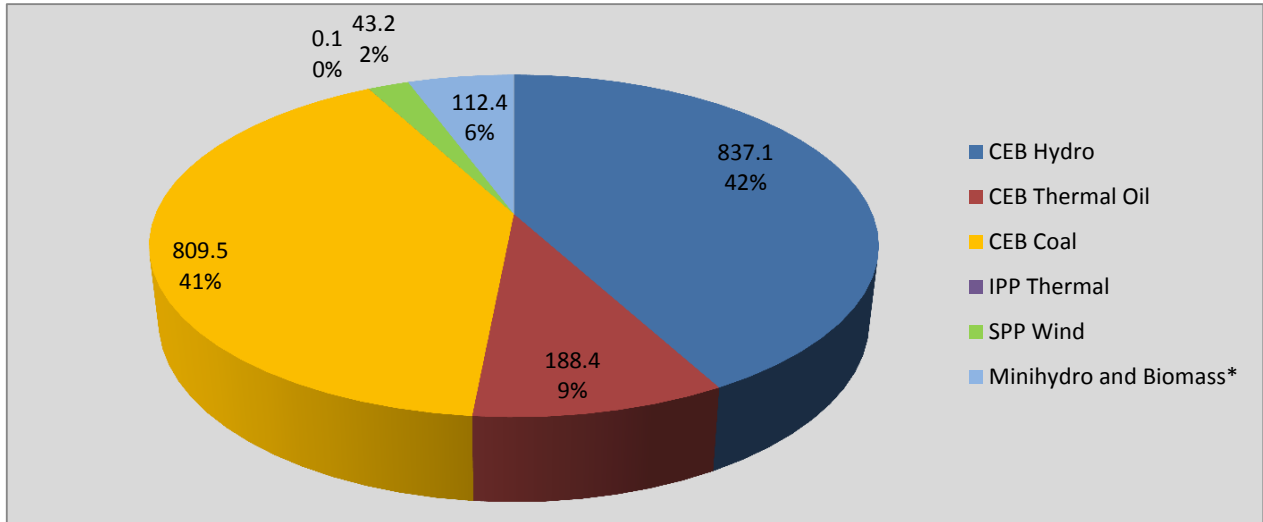
Note- Available Generation is estimated based on plant availability at 6.00am on June 8, 2020

Plant Loading at Night Peak on June 7, 2020



Note- Plant availability is recorded at 6.00 am on June 8, 2020

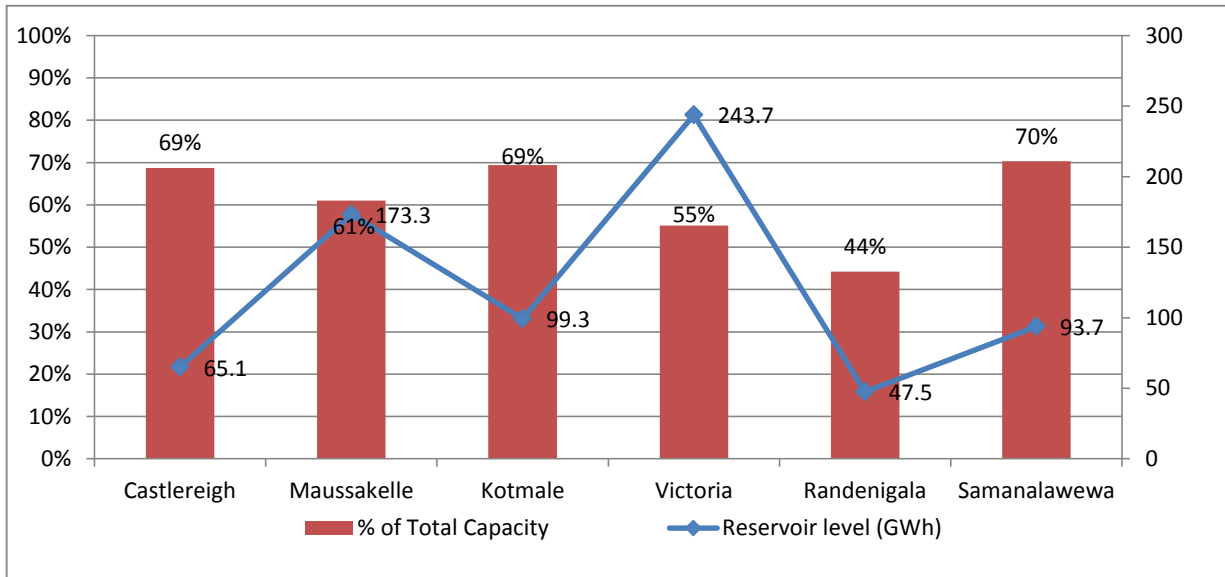
Contribution to the Night Peak in MW



Night Peak*	1,990.6 MW
Day Peak	1,462.5 MW
Minimum Demand	1,056.2 MW

* includes Moragahakanda plant and MiniHydro and Biomass plants of 236.00 MW Capacity

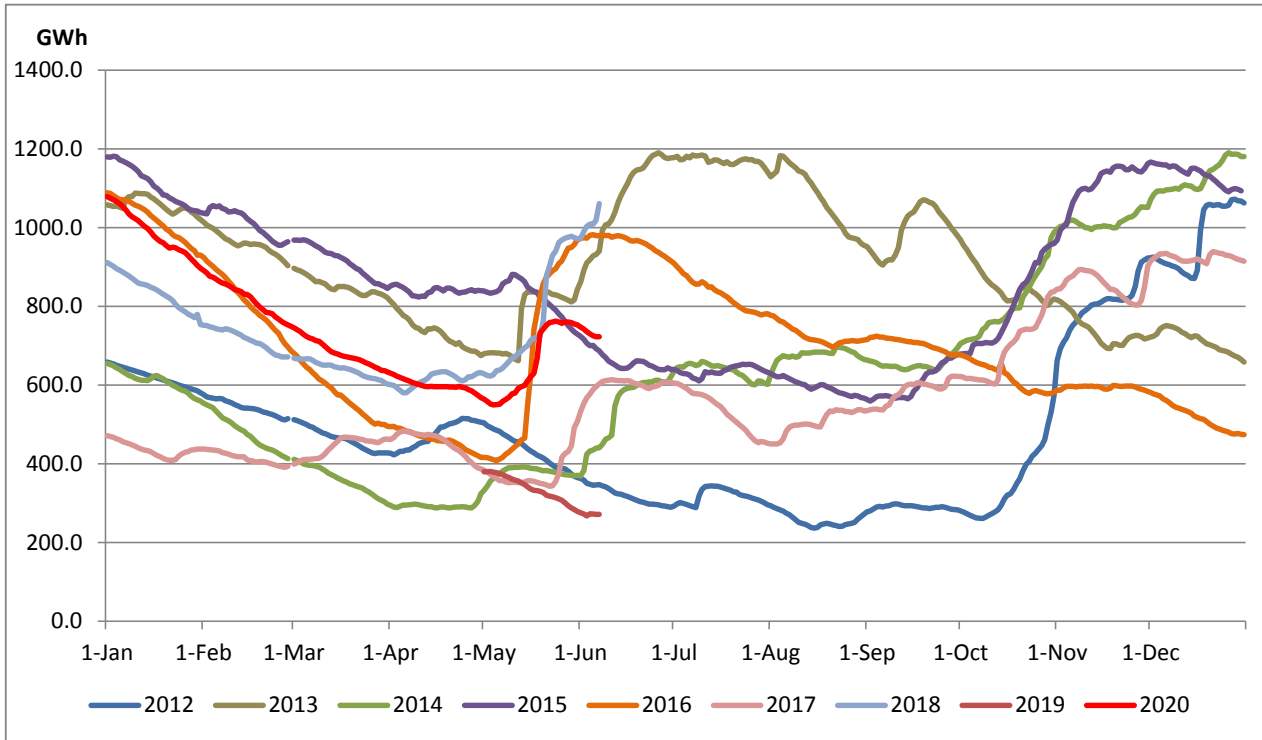
Reservoir Levels - as at 06.00 Hr on June 8, 2020



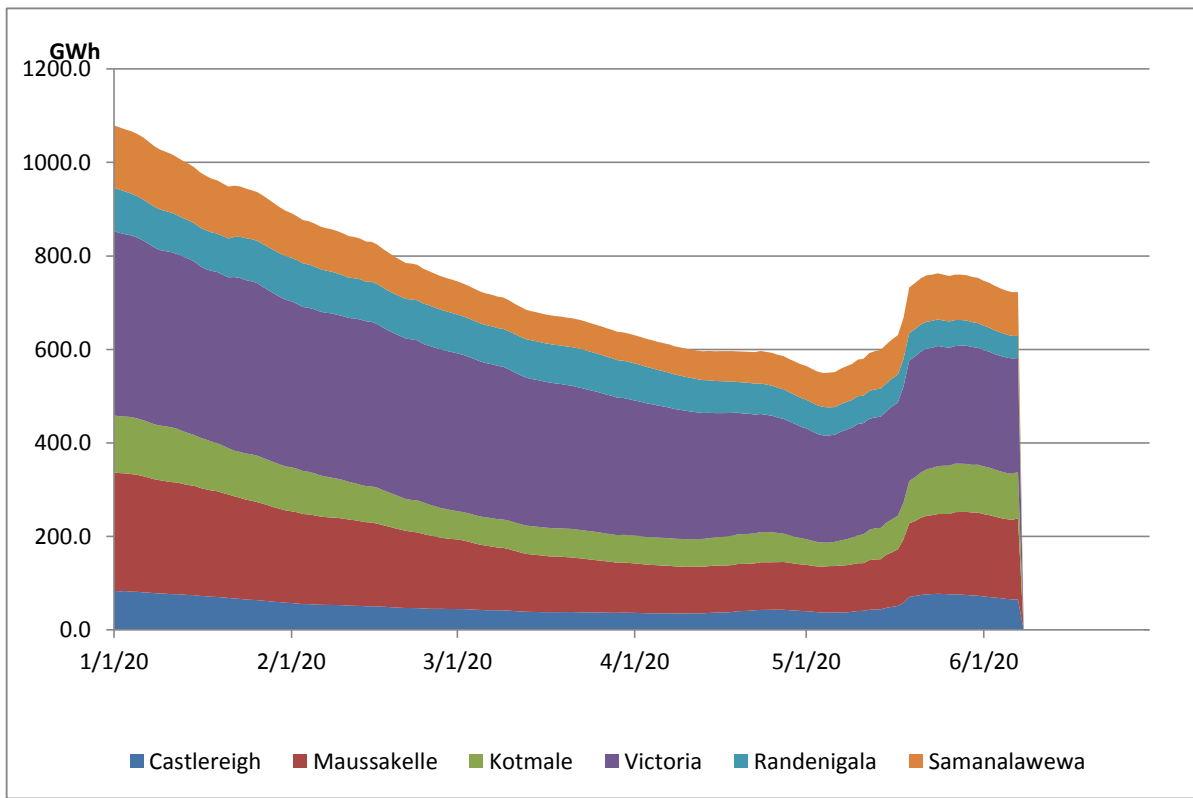
Total Reservoir Level(GWh)	722.6
% of Total capacity	60.0%

Comparison of Total Reservoir Storage Levels with Past Years

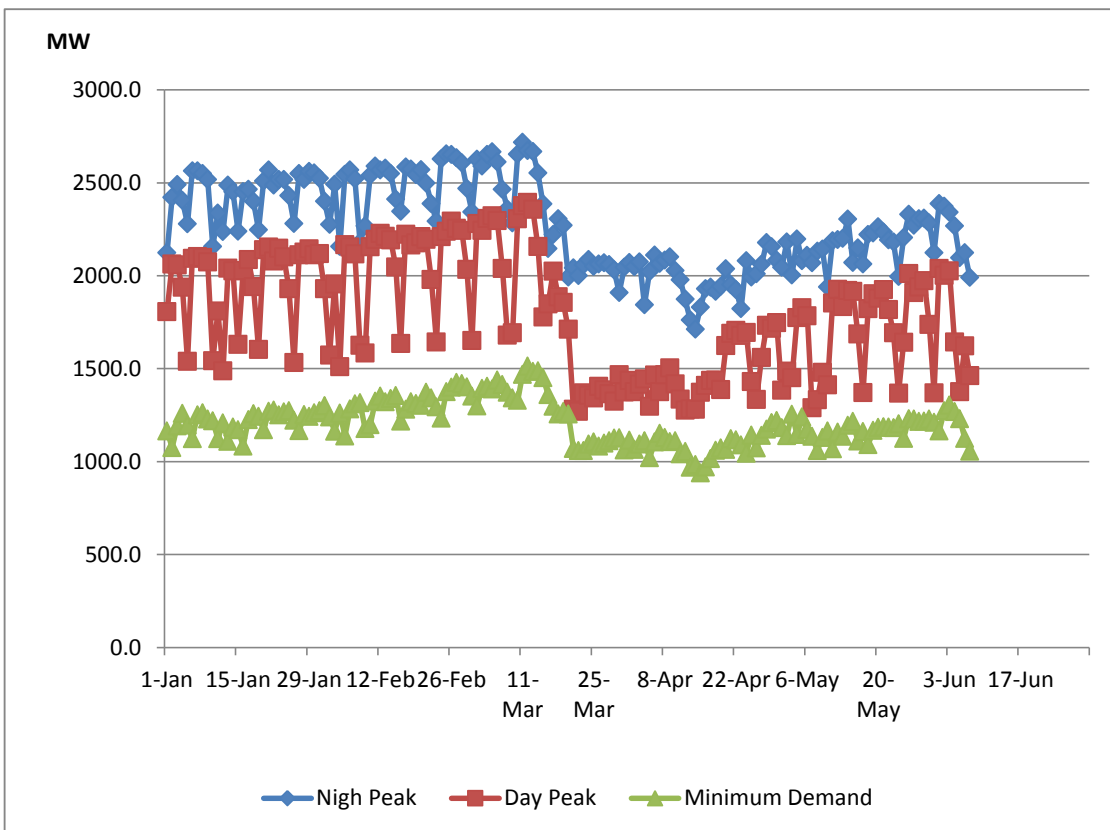
Data from June 2018 to March 2020 are not indicated in the graph



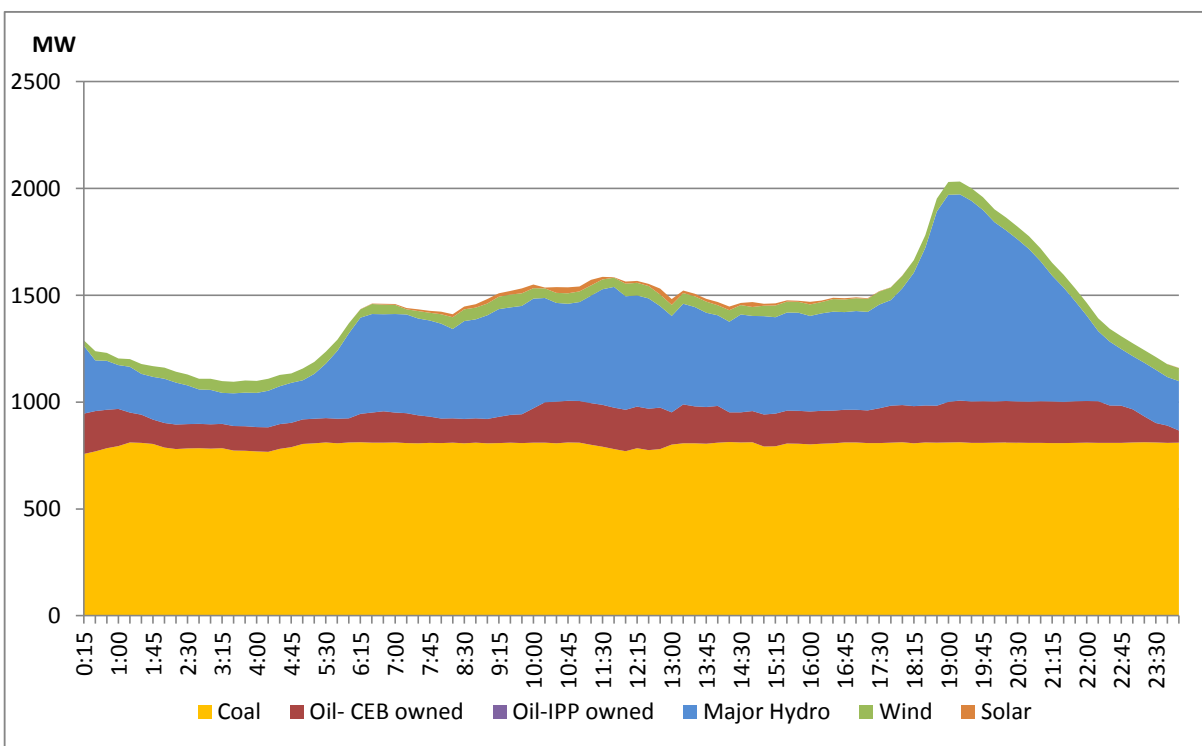
Variation of Major Hydro Reservoir Levels in the current year (GWh)



Variation of Demand during the current year



Daily Load Curve - June 6, 2020



Power Station	Capacity (MW)	Primary Fuel
CEB Hydro		
Victoria	210	
Ukuwela	40	
Kotmale	201	
Randenigala	122	
Rantambe	49	
Bowatenna	40	
Nilambe	3.2	
Upper Kotmale	150	
Old Laxapana	50	
New Laxapana	115	
Polpitiya	75	
Wimalasurendra	50	
Canyon	60	
Samanalawewa	120	
Kukuleganga	75	
Inginiyagala	10	
Udawalawe	6	
CEB Thermal		
Sapugaskanda 1	72	Heavy Fuel
Sapugaskanda 2	72	Heavy Fuel
Kelanitissa Small Gas Turb	68	Auto Diesel
GT 7 - Kelanitissa	115	Auto Diesel
Kelanitissa CCY	165	Naptha & Diesel
Lakvijaya (Puttalam Coal)	275	Coal
Lakvijaya (Puttalam Coal)	275	Coal
Lakvijaya (Puttalam Coal)	275	Coal
Uthuru Janani	24	Heavy Fuel
Barge CEB	60	Furnace Oil
Private Thermal (IPPs)		
Asia Power	51	Heavy Fuel
Sojitz - Kelanitissa	163	Auto Diesel
West Coast	270	Low Sulphur Furnace oil
Northern Power	27	Auto Diesel
ACE Embilipitiya	100	Furnace Oil