

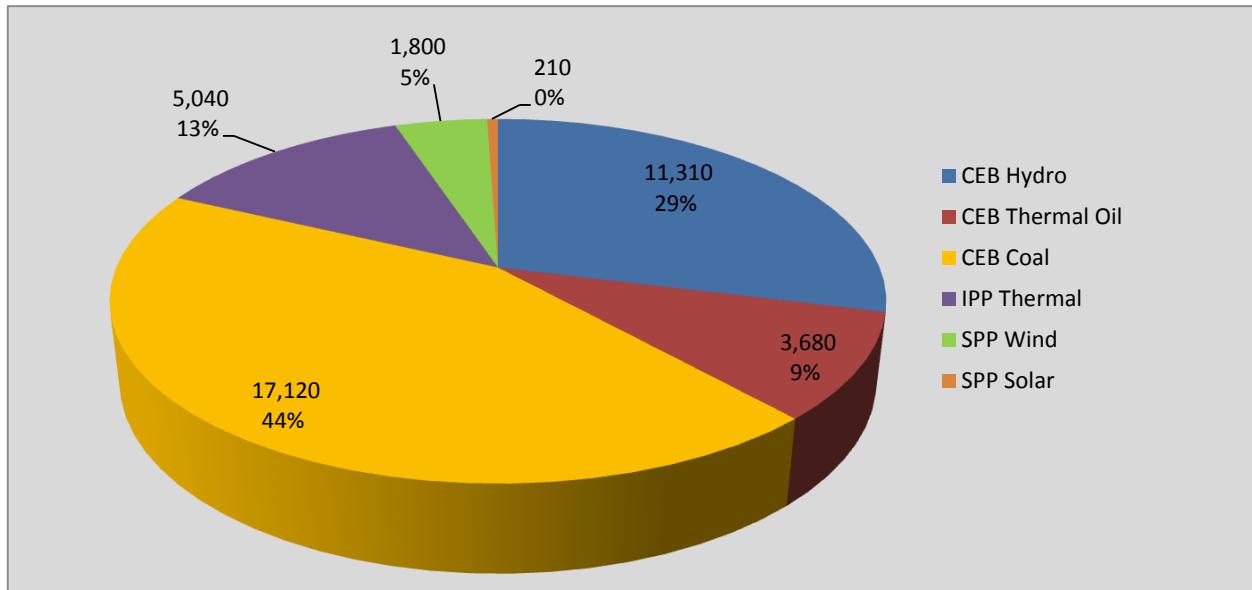
# **Generation and Reservoirs Statistics**

**May 27, 2020**



PUBLIC UTILITIES COMMISSION OF SRI LANKA

## Daily Generation Mix in MWh



**Total Generation 39,170 MWh**

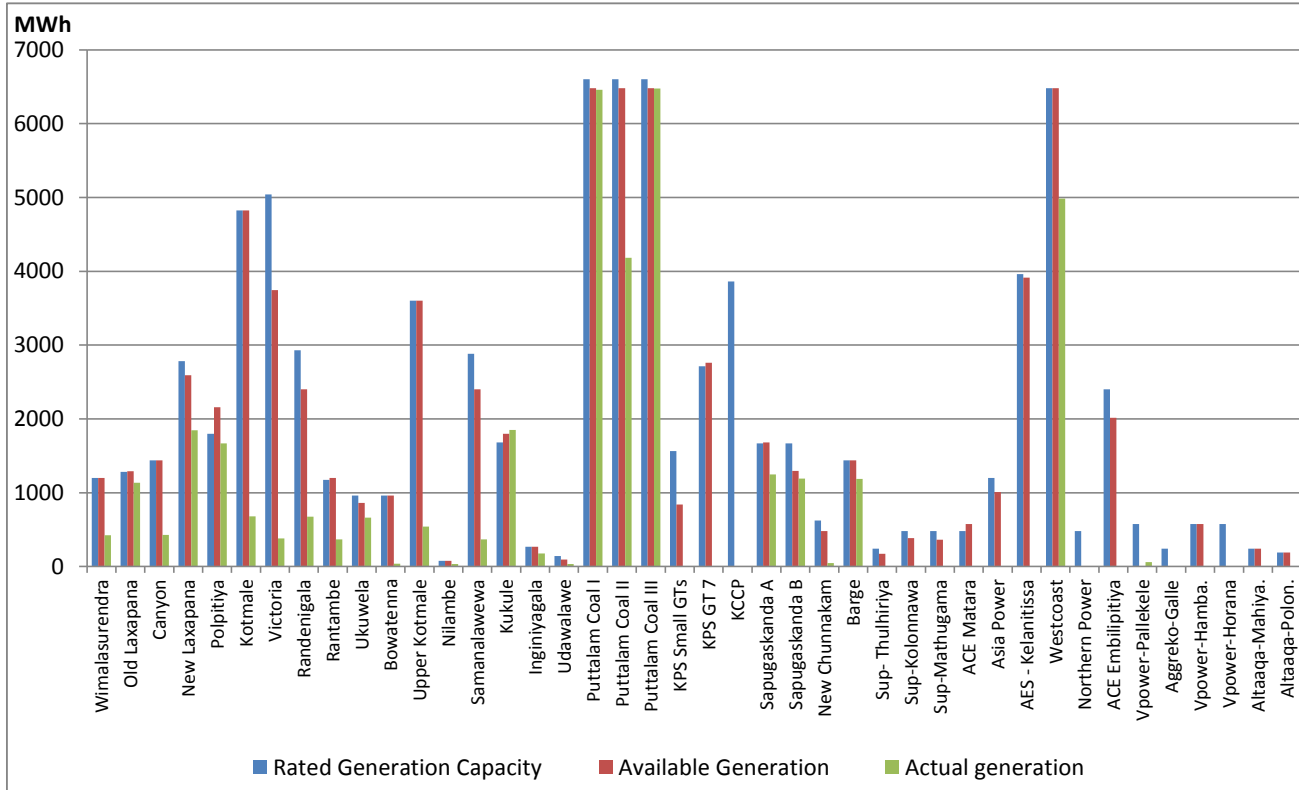
Note: Generation from other SPPs (Mini Hydro, small scale Solar and Biomass) is not included

## Cumulative Dispatch

**For Current Month**

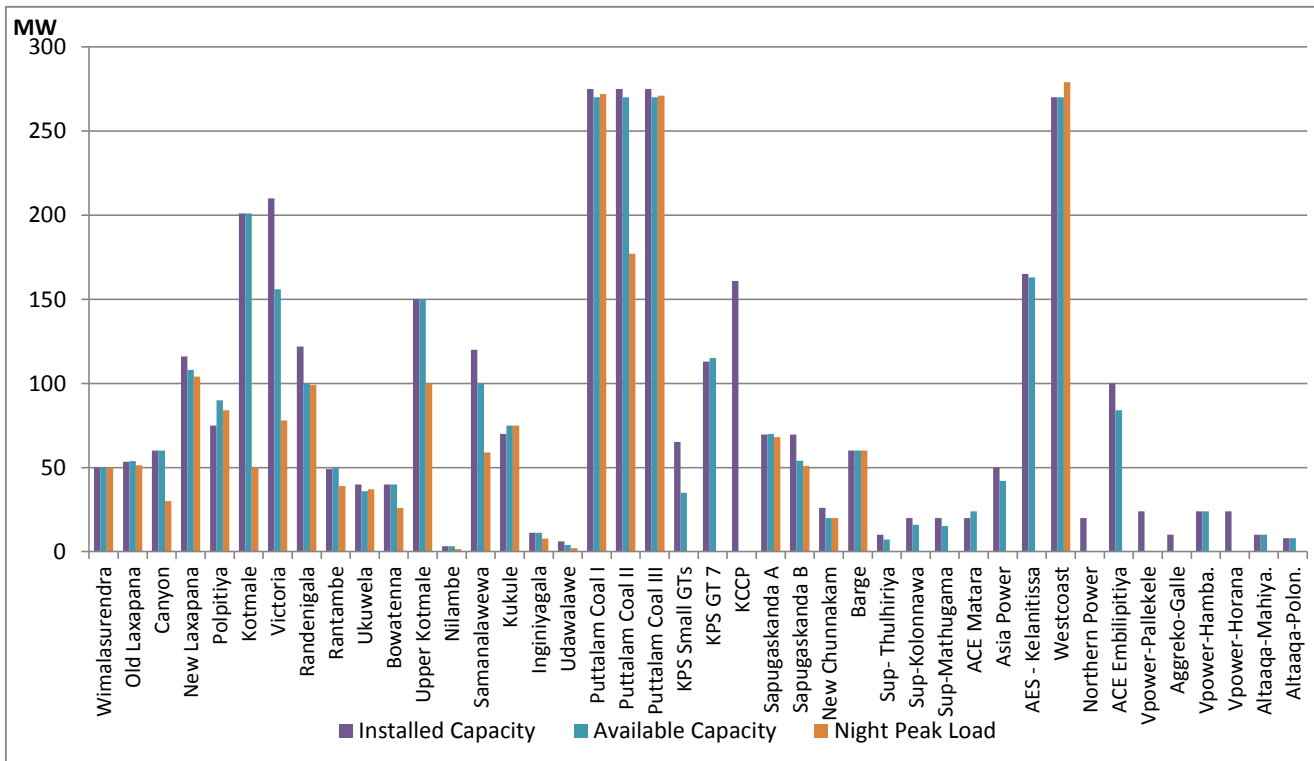
Category	Dispatch (MWh)	Percentage
CEB Hydro	249.5	25.69%
CEB Thermal Oil	95.1	9.79%
CEB Coal	449.0	46.22%
IPP Thermal	148.5	15.28%
SPP Wind	22.6	2.32%
SPP Solar	6.7	0.69%
<b>Total</b>	<b>971.3</b>	

## Plant Dispatch on May 27, 2020



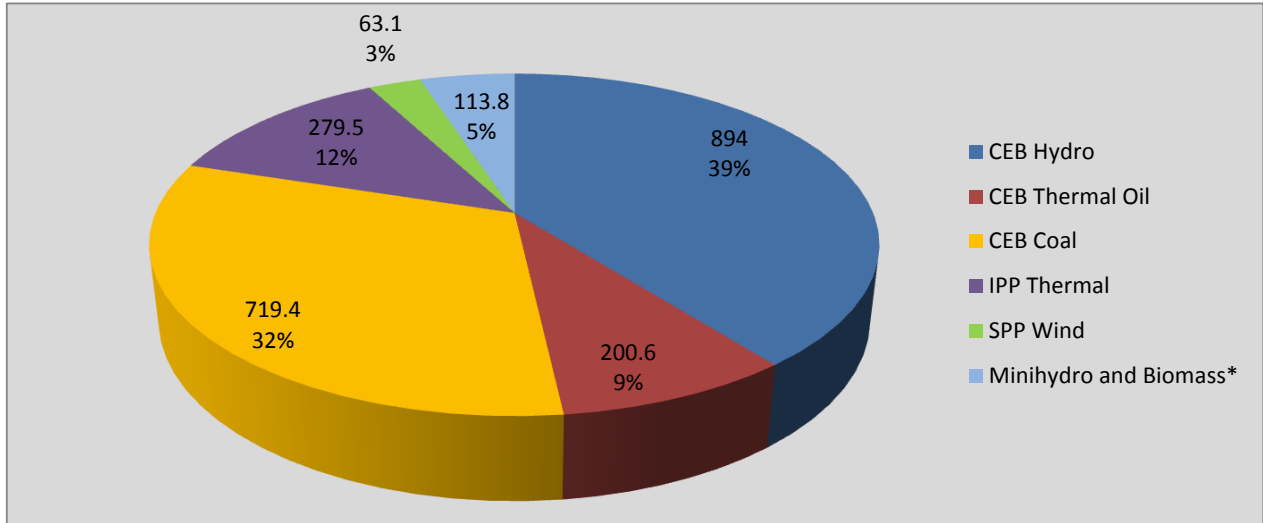
Note- Available Generation is estimated based on plant availability at 6.00am on May 28, 2020

## Plant Loading at Night Peak on May 27, 2020



Note- Plant availability is recorded at 6.00 am on May 28, 2020

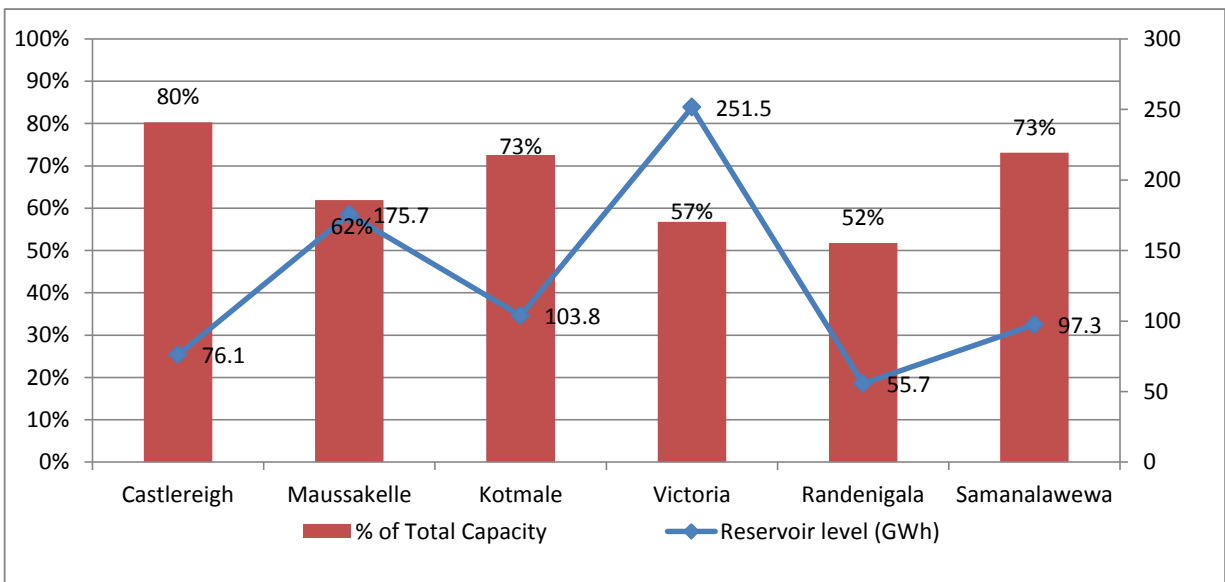
## Contribution to the Night Peak in MW



Night Peak\* 2,270.5 MW  
 Day Peak 1,909.6 MW  
 Minimum Demand 1,228.2 MW

\* includes Moragahakanda plant and MiniHydro and Biomass plants of 222.00 MW Capacity

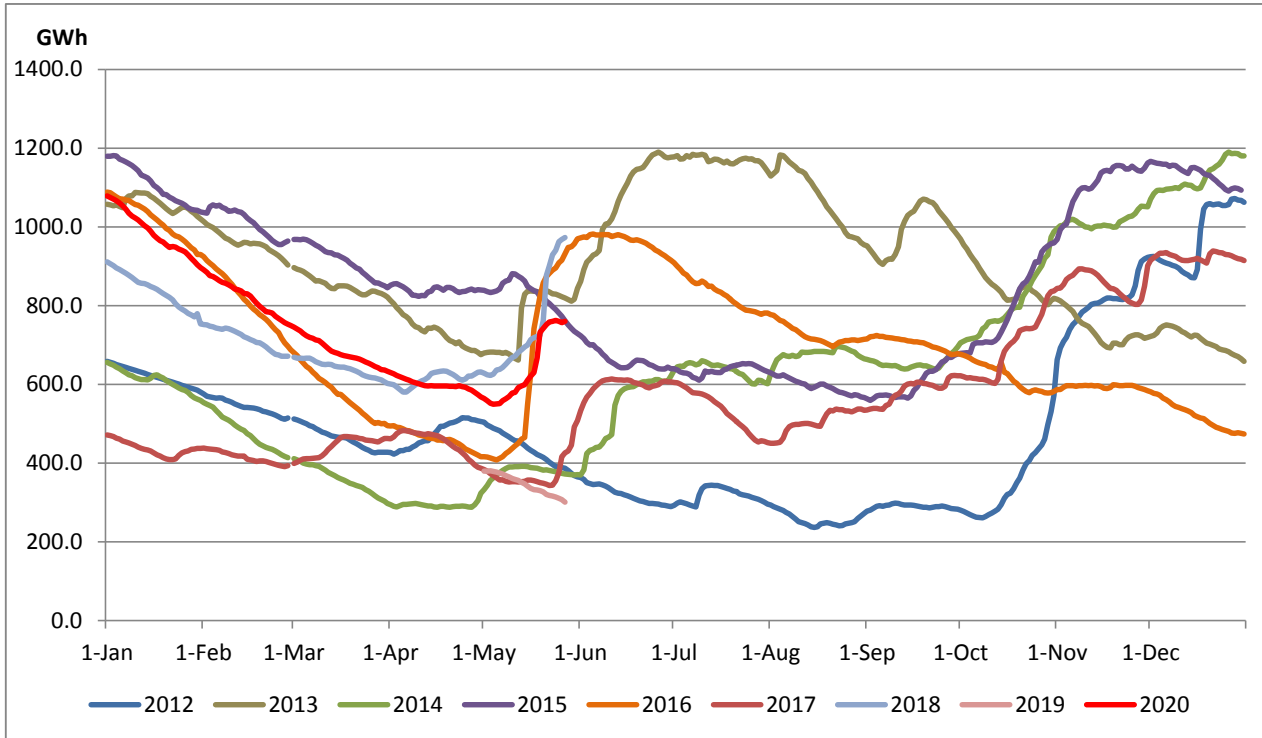
## Reservoir Levels - as at 06.00 Hr on May 28, 2020



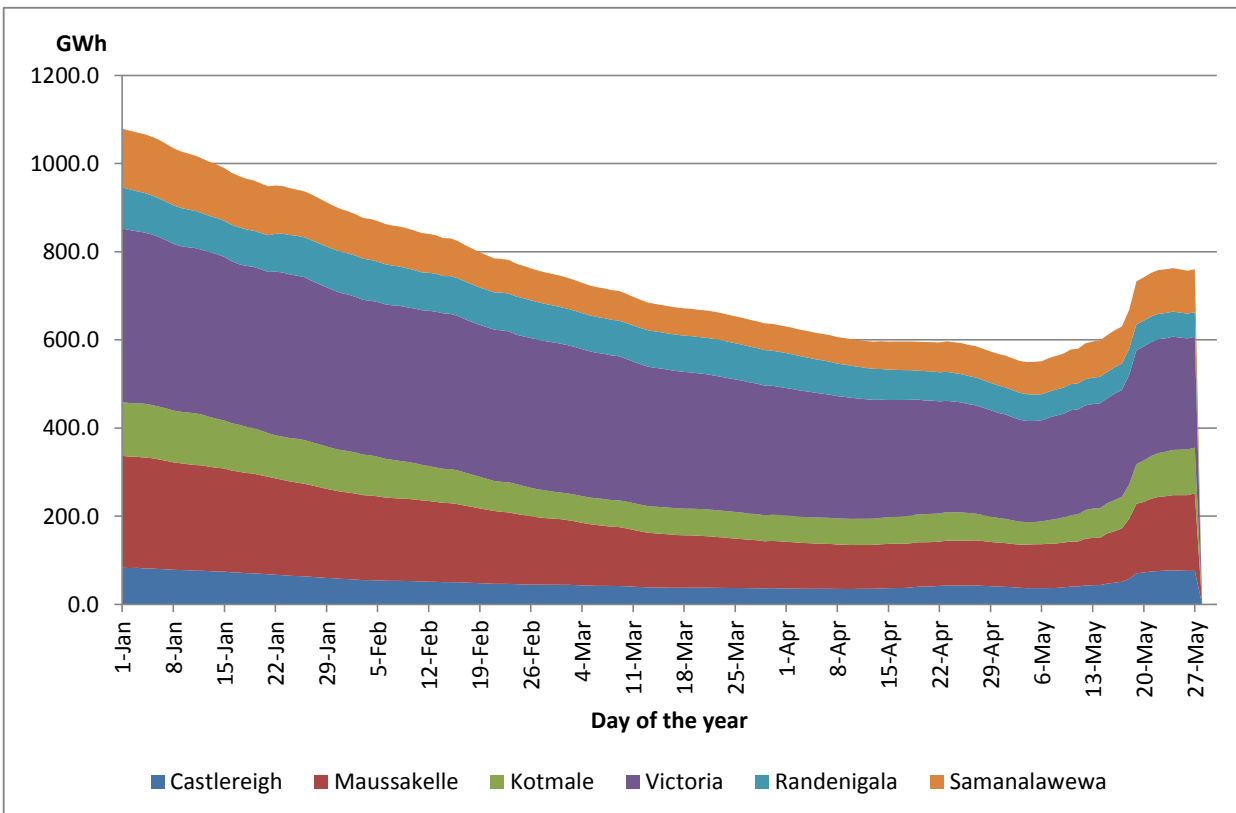
Total Reservoir Level(GWh) 760.1  
 % of Total capacity 63.1%

## Comparison of Total Reservoir Storage Levels with Past Years

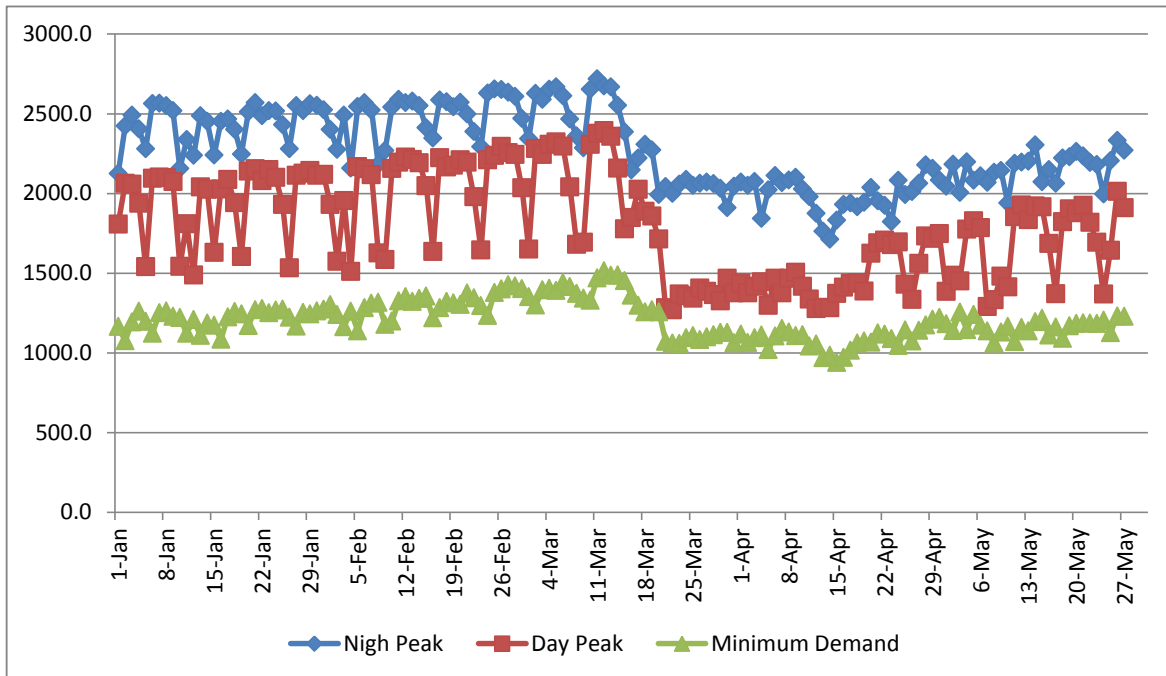
Data from June 2018 to March 2020 are not indicated in the graph



## Variation of Major Hydro Reservoir Levels in the current year (GWh)



## Variation of Demand during the current year



<b>Power Station</b>	<b>Capacity (MW)</b>	<b>Primary Fuel</b>
<b>CEB Hydro</b>		
Victoria	210	
Ukuwela	40	
Kotmale	201	
Randenigala	122	
Rantambe	49	
Bowatenna	40	
Nilambe	3.2	
Upper Kotmale	150	
Old Laxapana	50	
New Laxapana	115	
Polpitiya	75	
Wimalasurendra	50	
Canyon	60	
Samanalawewa	120	
Kukuleganga	75	
Inginiyagala	10	
Udawalawe	6	
<b>CEB Thermal</b>		
Sapugaskanda 1	72	Heavy Fuel
Sapugaskanda 2	72	Heavy Fuel
Kelanitissa Small Gas Turb	68	Auto Diesel
GT 7 - Kelanitissa	115	Auto Diesel
Kelanitissa CCY	165	Naptha & Diesel
Lakvijaya (Puttalam Coal)	275	Coal
Lakvijaya (Puttalam Coal)	275	Coal
Lakvijaya (Puttalam Coal)	275	Coal
Uthuru Janani	24	Heavy Fuel
Barge CEB	60	Furnace Oil
<b>Private Thermal (IPPs)</b>		
Asia Power	51	Heavy Fuel
Sojitz - Kelanitissa	163	Auto Diesel
West Coast	270	Low Sulphur Furnace oil
Northern Power	27	Auto Diesel
ACE Embilipitiya	100	Furnace Oil