

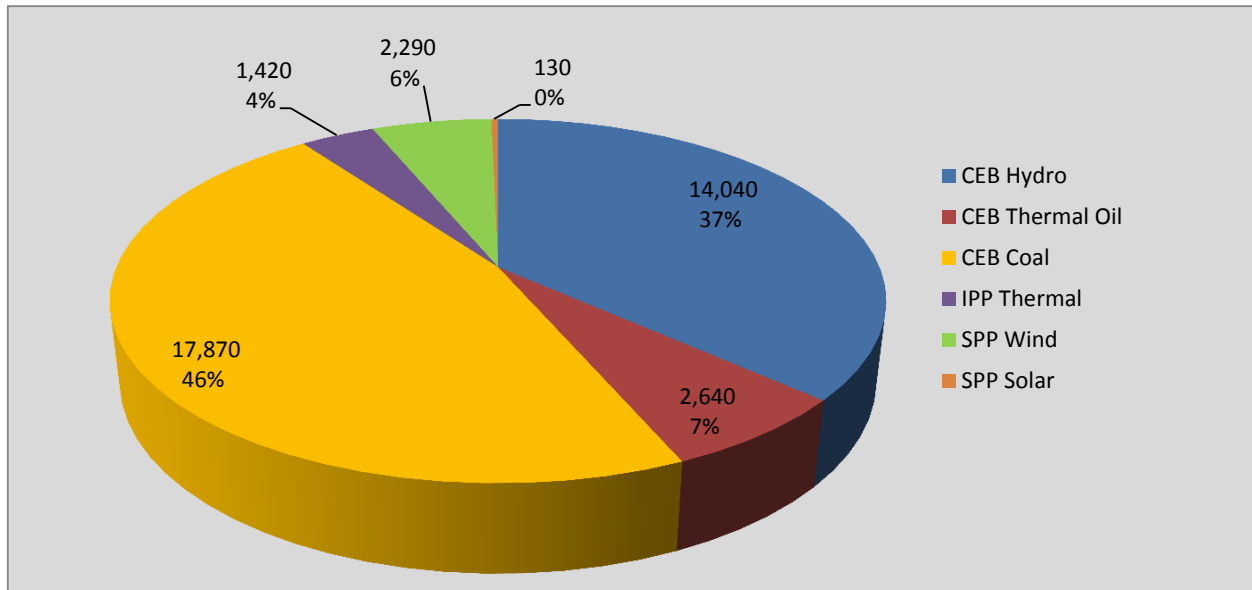
# **Generation and Reservoirs Statistics**

**May 19, 2020**



PUBLIC UTILITIES COMMISSION OF SRI LANKA

## Daily Generation Mix in MWh



**Total Generation 38,370 MWh**

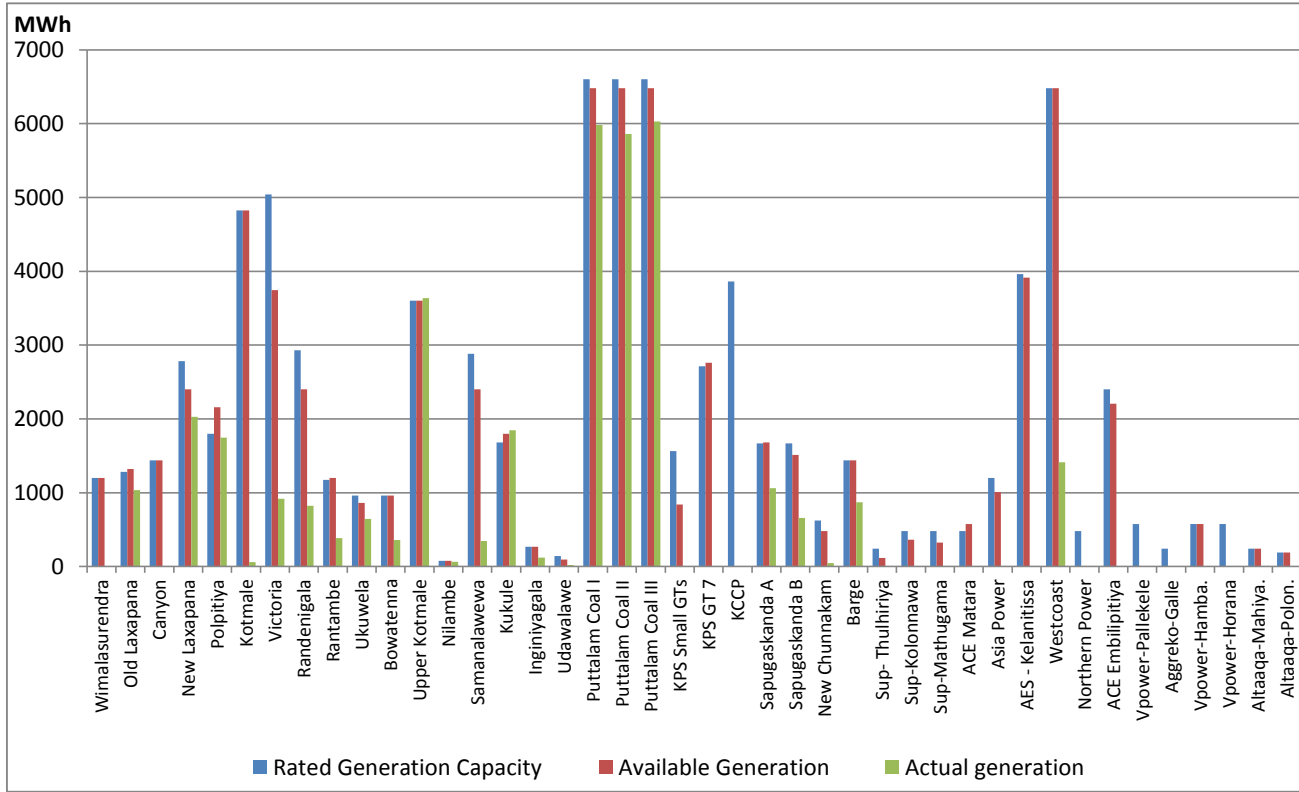
Note: Generation from other SPPs (Mini Hydro, small scale Solar and Biomass) is not included

## Cumulative Dispatch

**For Current Month**

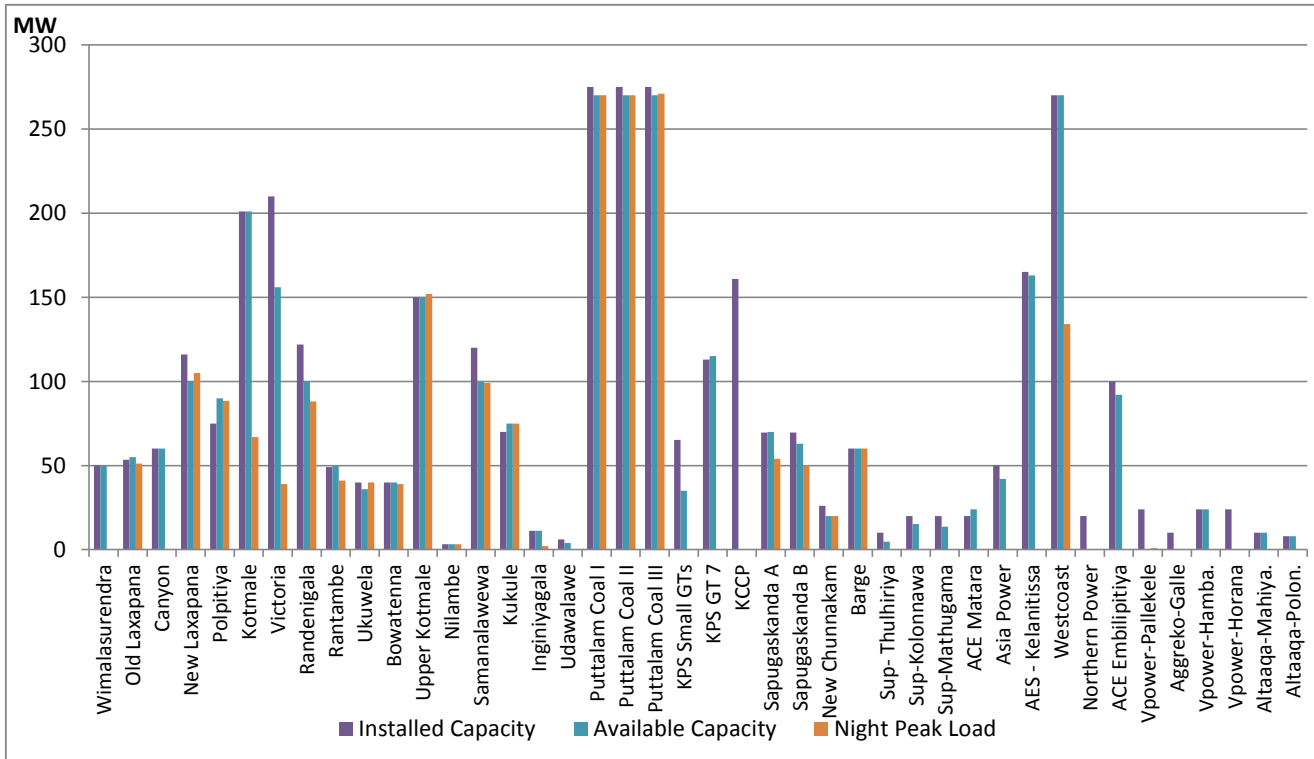
Category	Dispatch (MWh)	Percentage
CEB Hydro	146.5	21.76%
CEB Thermal Oil	64.4	9.57%
CEB Coal	336.0	49.92%
IPP Thermal	113.0	16.78%
SPP Wind	8.7	1.29%
SPP Solar	4.5	0.67%
<b>Total</b>	<b>673.1</b>	

## Plant Dispatch on May 19, 2020



Note- Available Generation is estimated based on plant availability at 6.00am on May 20, 2020

## Plant Loading at Night Peak on May 19, 2020

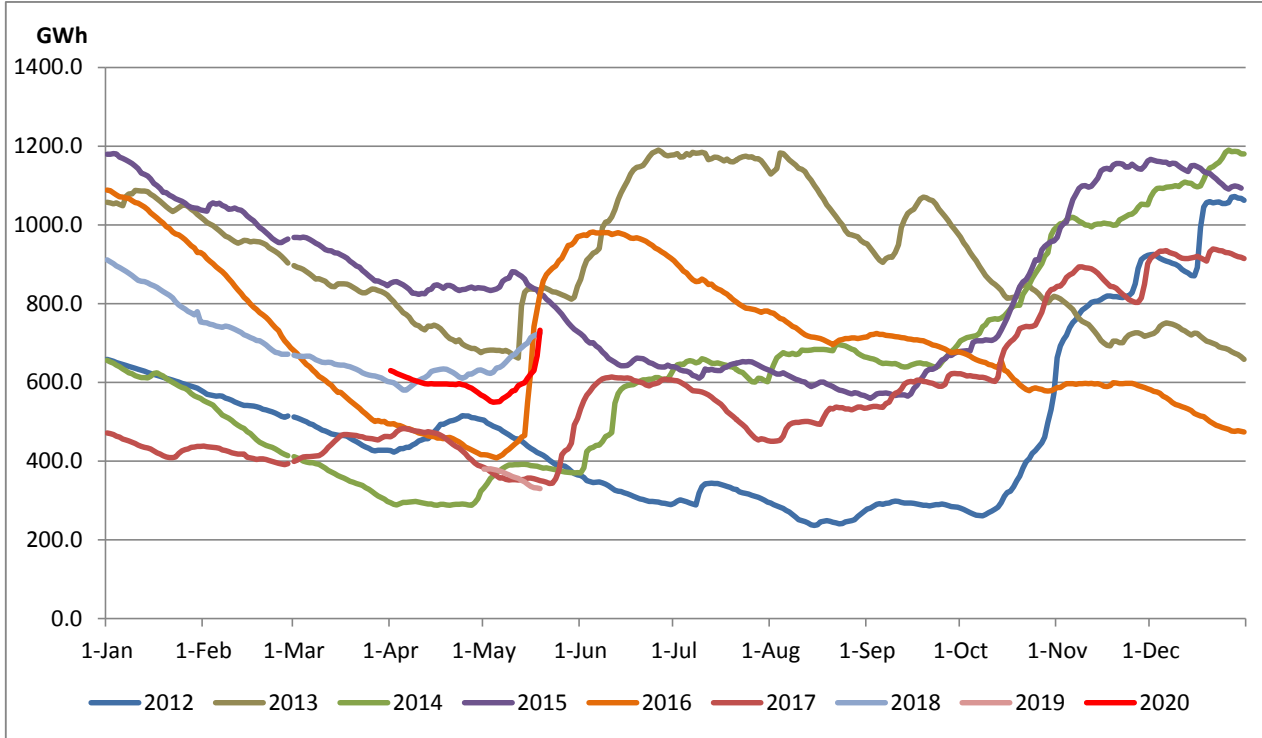


Note- Plant availability is recorded at 6.00 am on May 20, 2020



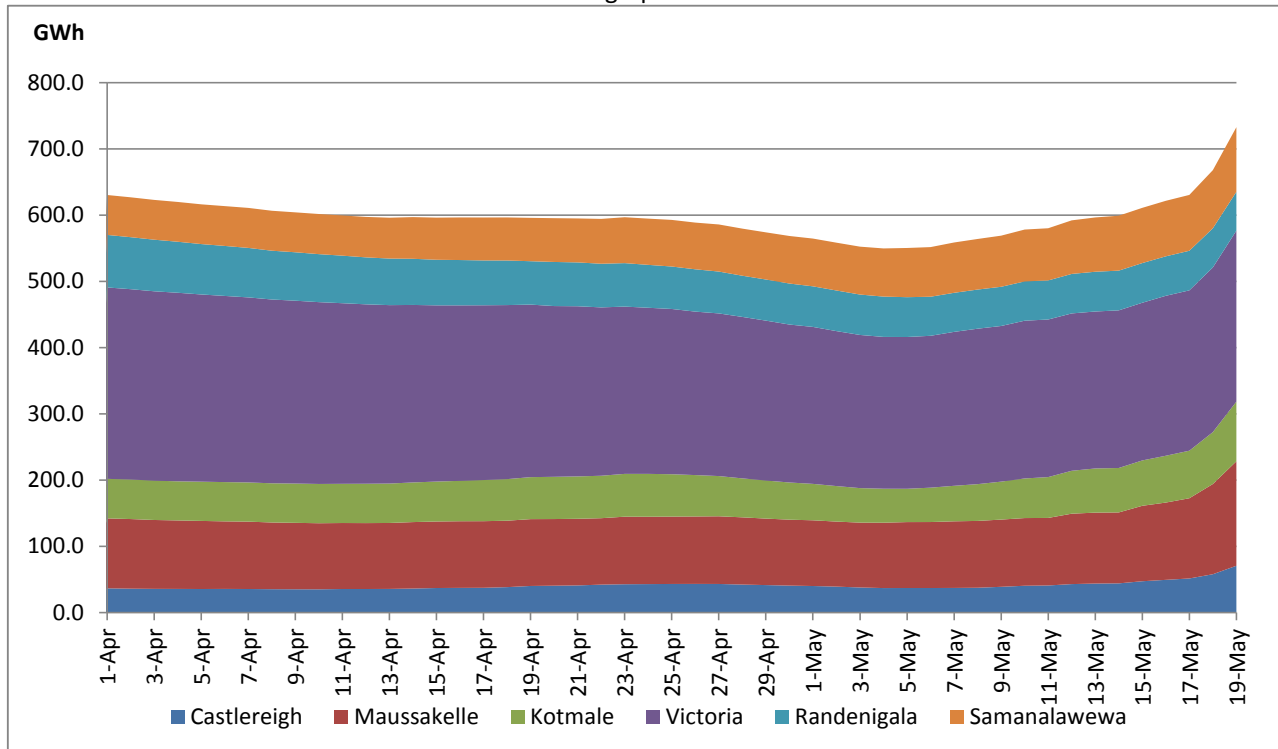
## Comparison of Total Reservoir Storage Levels with Past Years

Data from June 2018 to March 2020 are not indicated in the graph



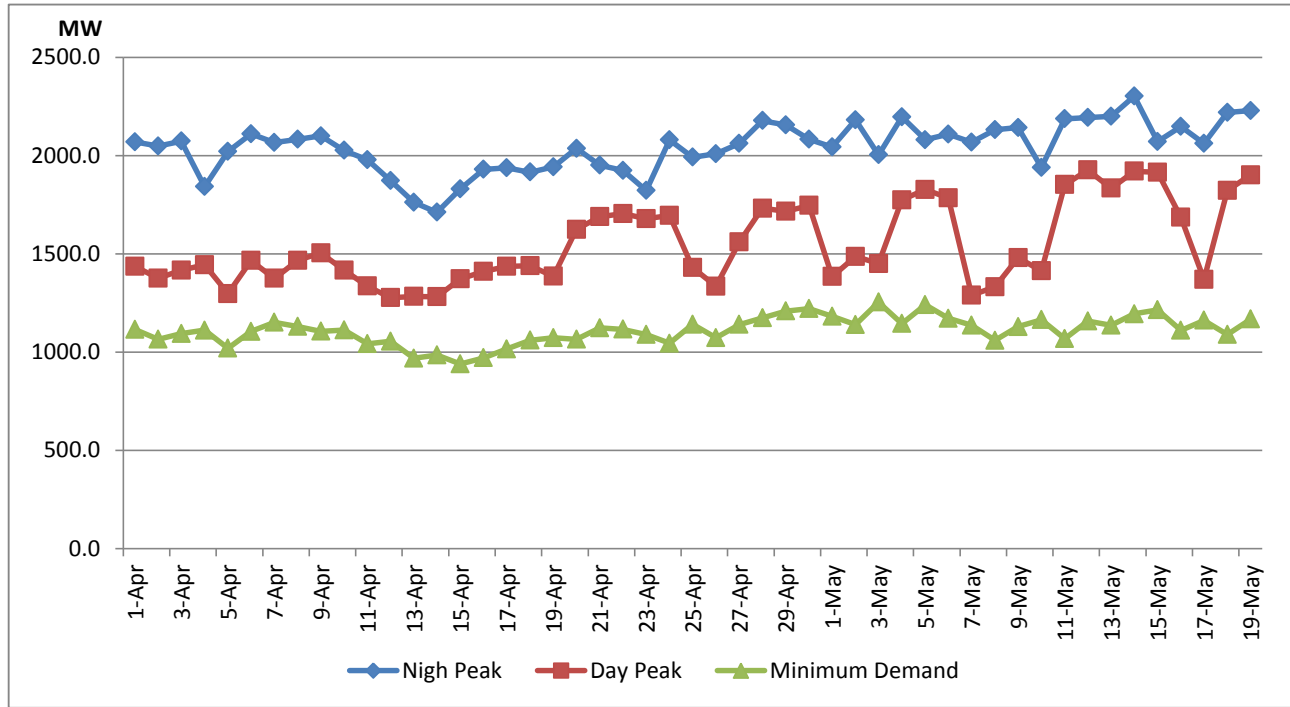
## Variation of Major Hydro Reservoir Levels in the current year (GWh)

Data from Jan 1-March 30 is not indicated in the graph

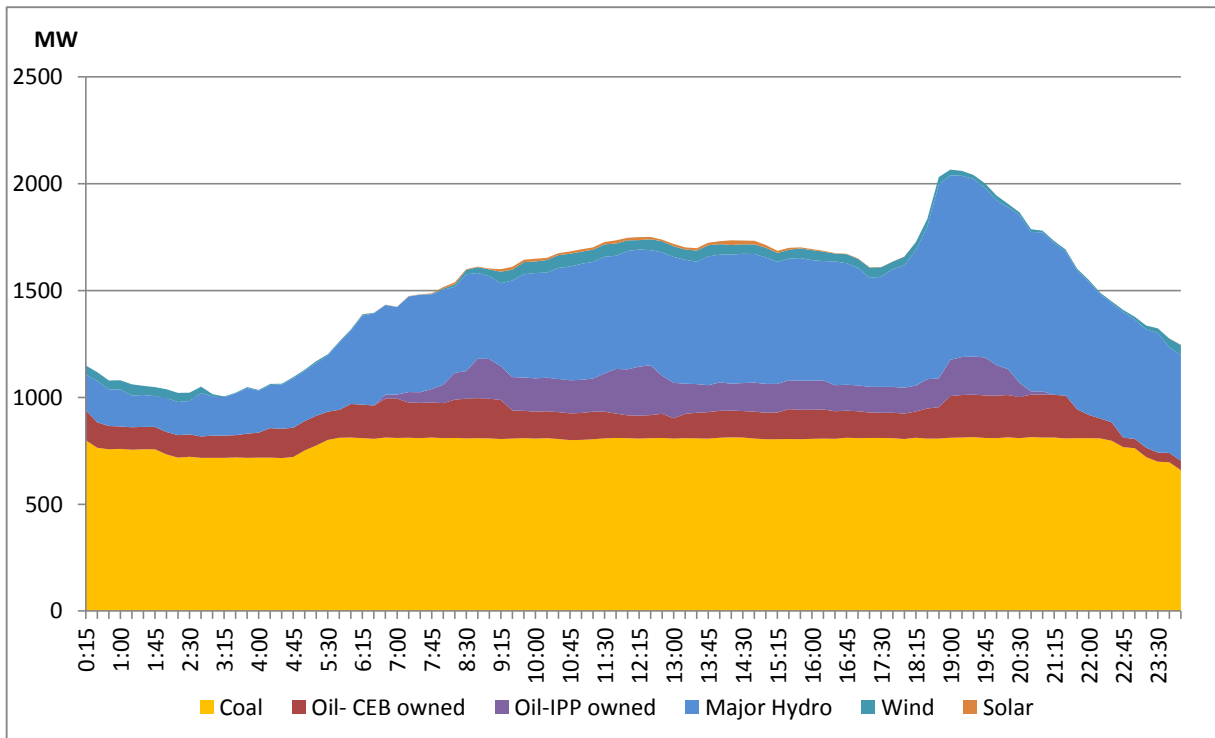


## Variation of Demand during the current year

Data from Jan 1-March 30 is not indicated in the graph



## Daily Load Curve - May 18, 2020



<b>Power Station</b>	<b>Capacity (MW)</b>	<b>Primary Fuel</b>
<b>CEB Hydro</b>		
Victoria	210	
Ukuwela	40	
Kotmale	201	
Randenigala	122	
Rantambe	49	
Bowatenna	40	
Nilambe	3.2	
Upper Kotmale	150	
Old Laxapana	50	
New Laxapana	115	
Polpitiya	75	
Wimalasurendra	50	
Canyon	60	
Samanalawewa	120	
Kukuleganga	75	
Inginiyagala	10	
Udawalawe	6	
<b>CEB Thermal</b>		
Sapugaskanda 1	72	Heavy Fuel
Sapugaskanda 2	72	Heavy Fuel
Kelanitissa Small Gas Turb	68	Auto Diesel
GT 7 - Kelanitissa	115	Auto Diesel
Kelanitissa CCY	165	Naptha & Diesel
Lakvijaya (Puttalam Coal)	275	Coal
Lakvijaya (Puttalam Coal)	275	Coal
Lakvijaya (Puttalam Coal)	275	Coal
Uthuru Janani	24	Heavy Fuel
Barge CEB	60	Furnace Oil
<b>Private Thermal (IPPs)</b>		
Asia Power	51	Heavy Fuel
Sojitz - Kelanitissa	163	Auto Diesel
West Coast	270	Low Sulphur Furnace oil
Northern Power	27	Auto Diesel
ACE Embilipitiya	100	Furnace Oil