

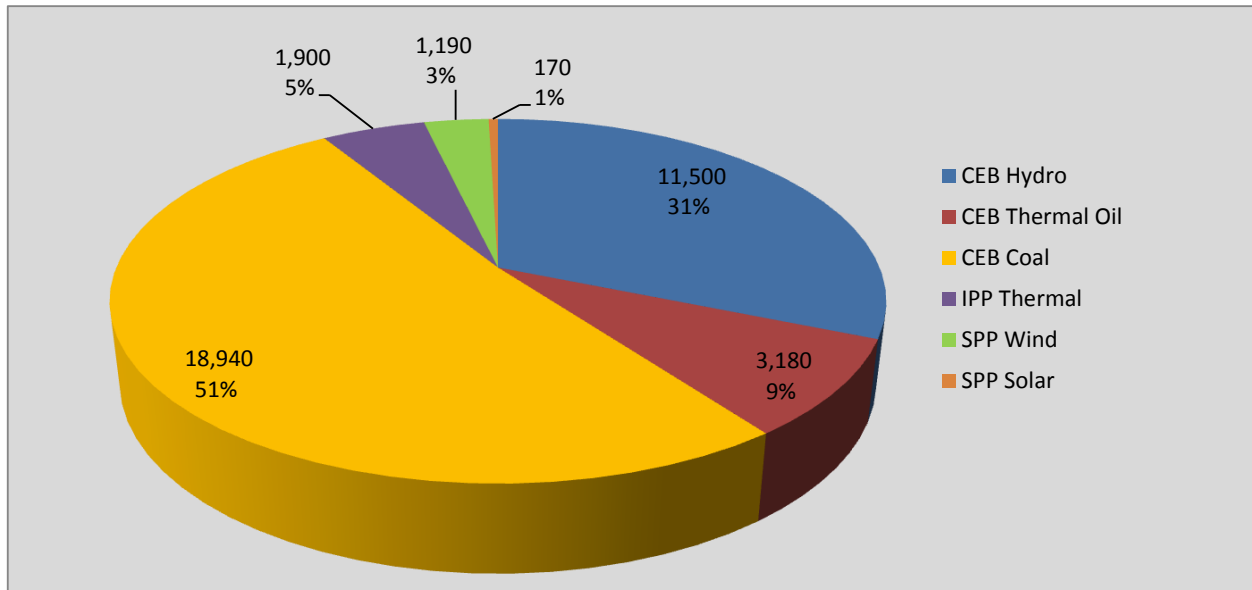
# **Generation and Reservoirs Statistics**

**May 18, 2020**



PUBLIC UTILITIES COMMISSION OF SRI LANKA

## Daily Generation Mix in MWh



**Total Generation 36,880 MWh**

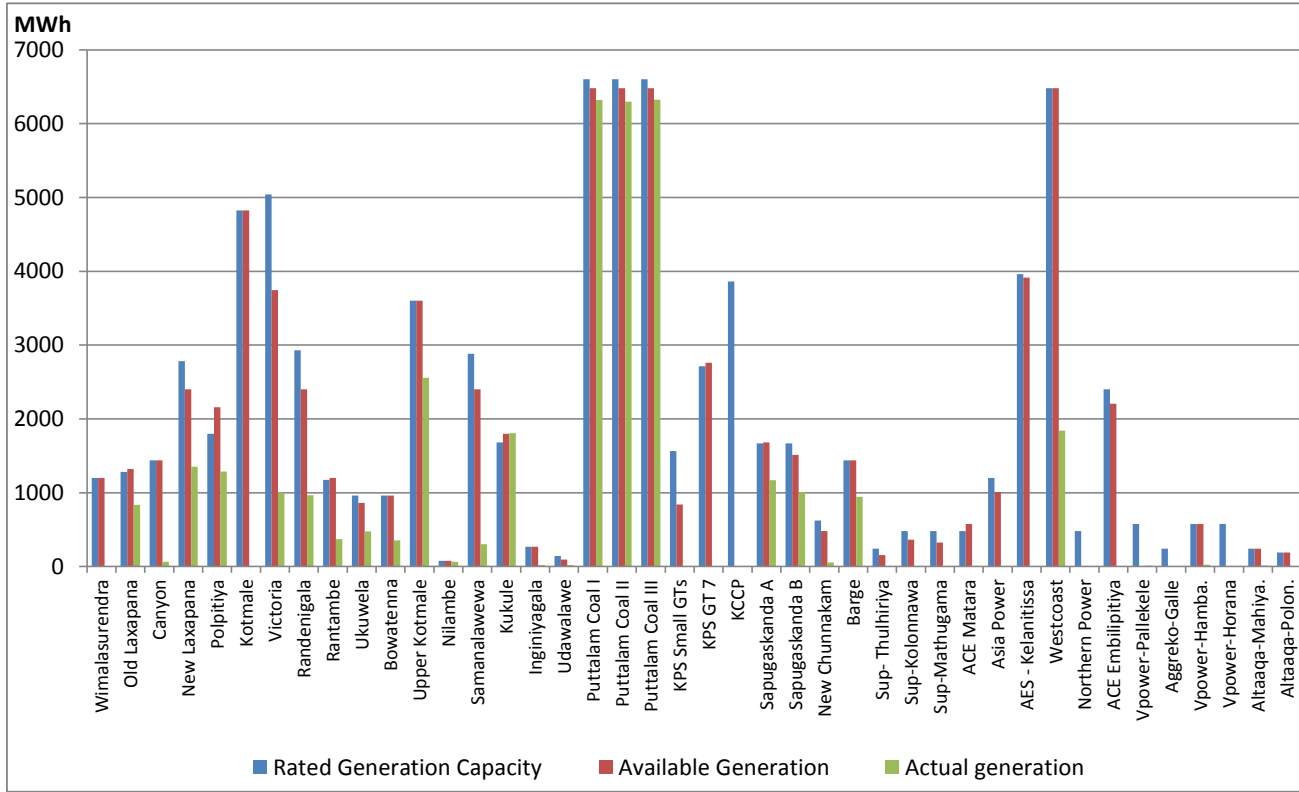
Note: Generation from other SPPs (Mini Hydro, small scale Solar and Biomass) is not included

## Cumulative Dispatch

**For Current Month**

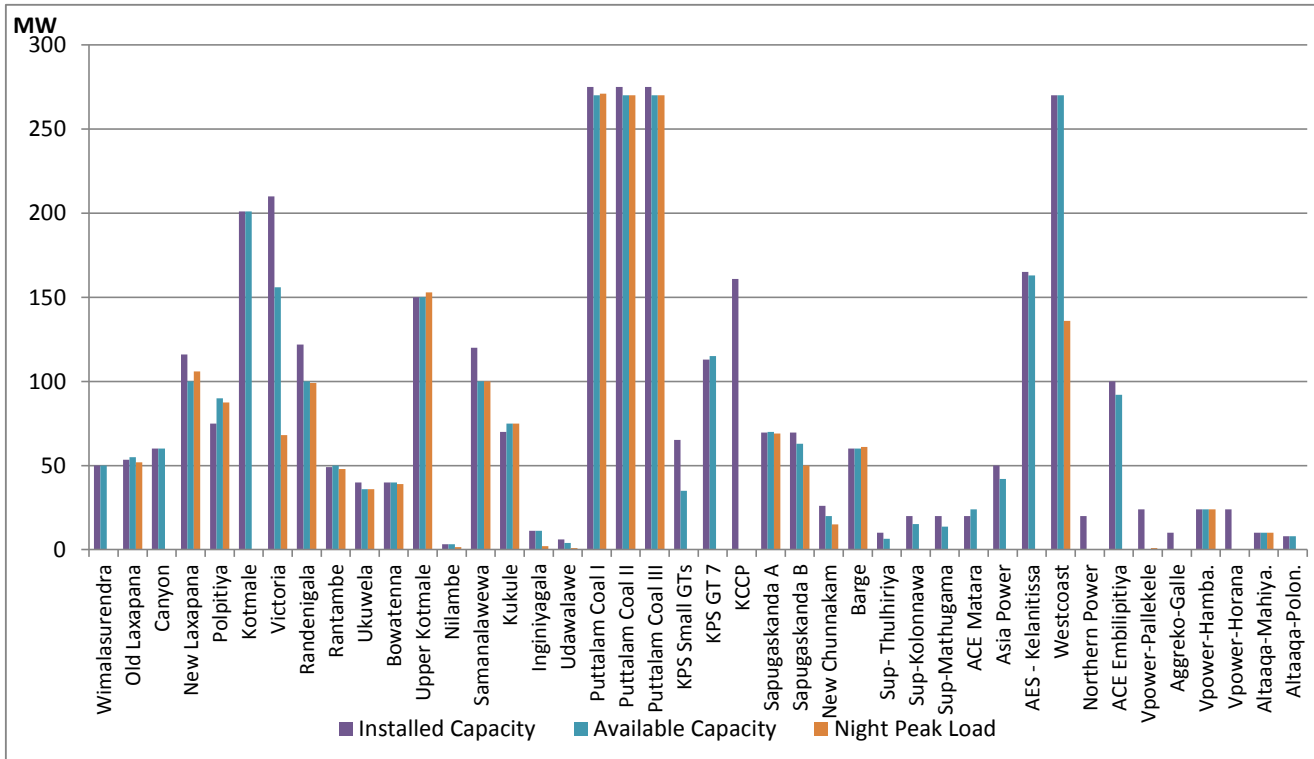
| Category        | Dispatch (MWh) |        |
|-----------------|----------------|--------|
| CEB Hydro       | 132.5          | 20.87% |
| CEB Thermal Oil | 61.8           | 9.73%  |
| CEB Coal        | 318.1          | 50.12% |
| IPP Thermal     | 111.6          | 17.58% |
| SPP Wind        | 6.4            | 1.01%  |
| SPP Solar       | 4.4            | 0.69%  |
| <b>Total</b>    | <b>634.7</b>   |        |

## Plant Dispatch on May 18, 2020



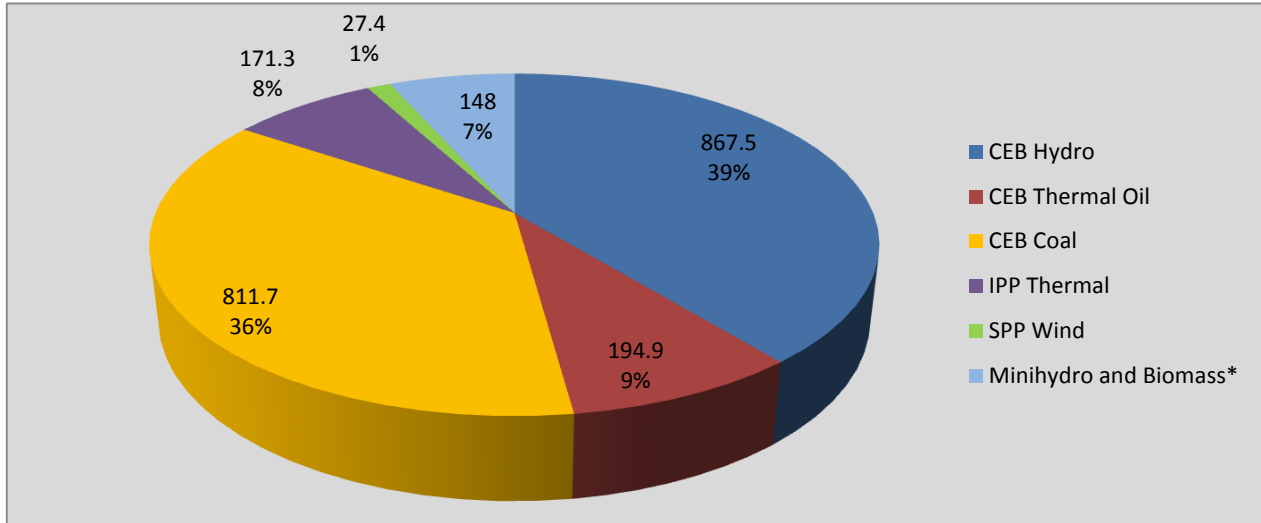
Note- Available Generation is estimated based on plant availability at 6.00am on May 19, 2020

## Plant Loading at Night Peak on May 18, 2020



Note- Plant availability is recorded at 6.00 am on May 19, 2020

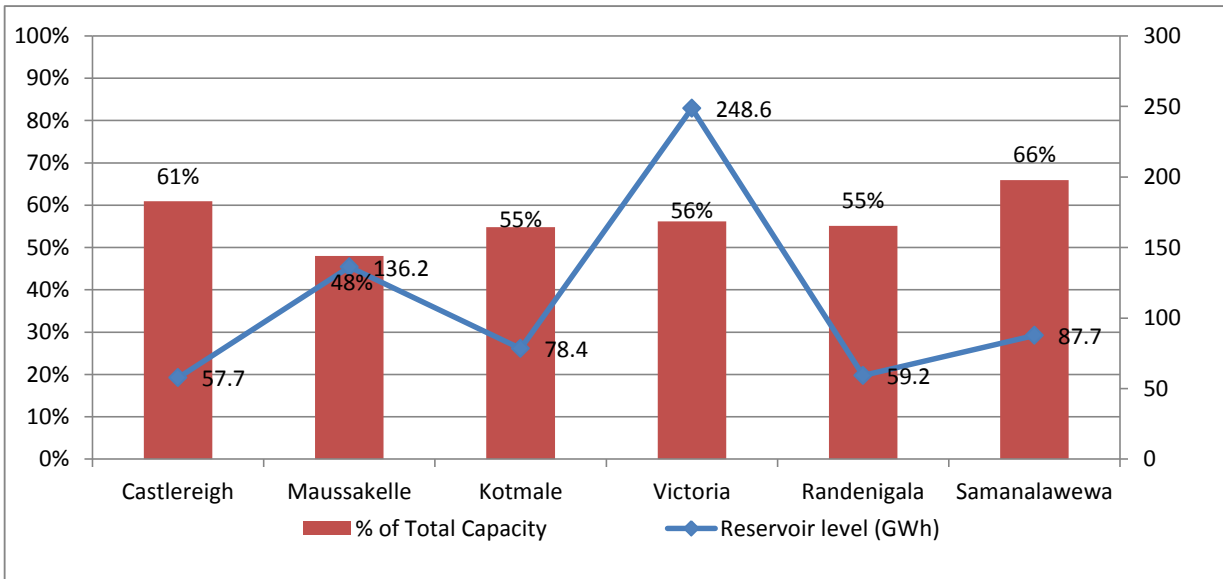
### Contribution to the Night Peak in MW



Night Peak\* 2,220.8 MW  
 Day Peak 1,822.8 MW  
 Minimum Demand 1,090.4 MW

\* includes Moragahakanda plant and MiniHydro and Biomass plants of 229.00 MW Capacity

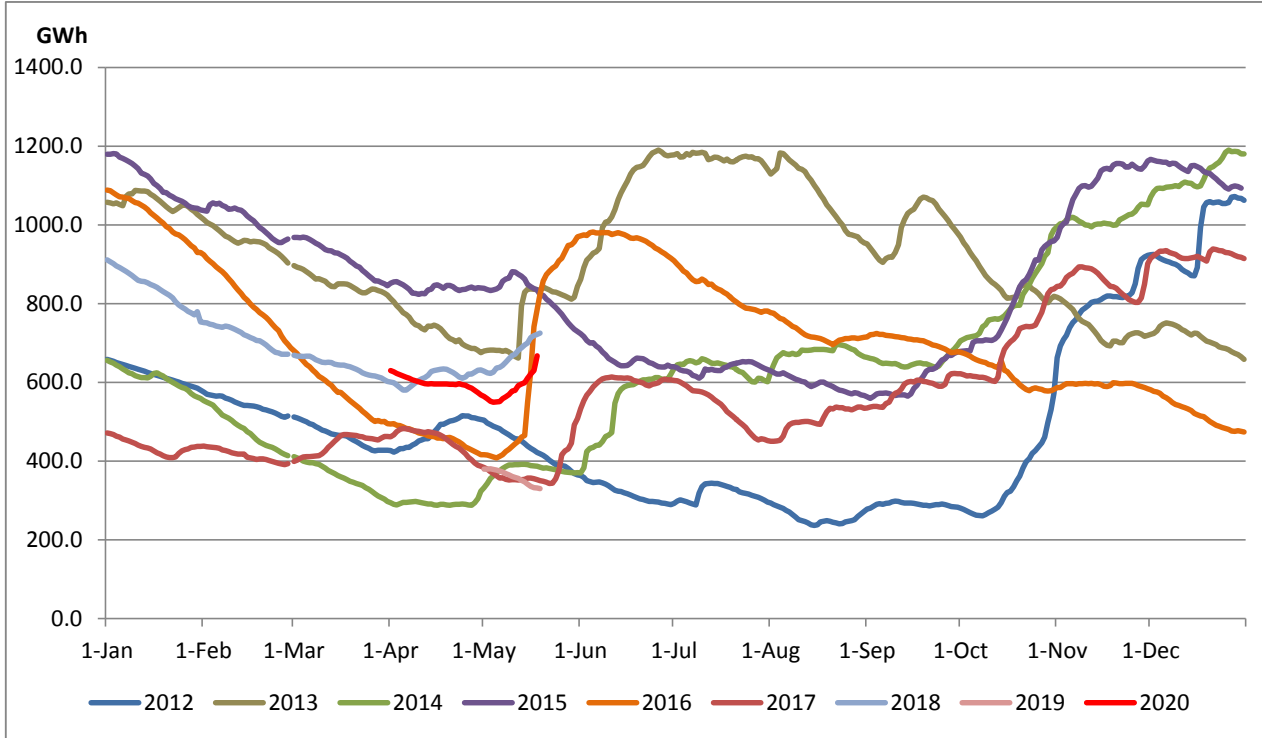
### Reservoir Levels - as at 06.00 Hr on May 19, 2020



Total Reservoir Level(GWh) 667.8  
 % of Total capacity 55.9%

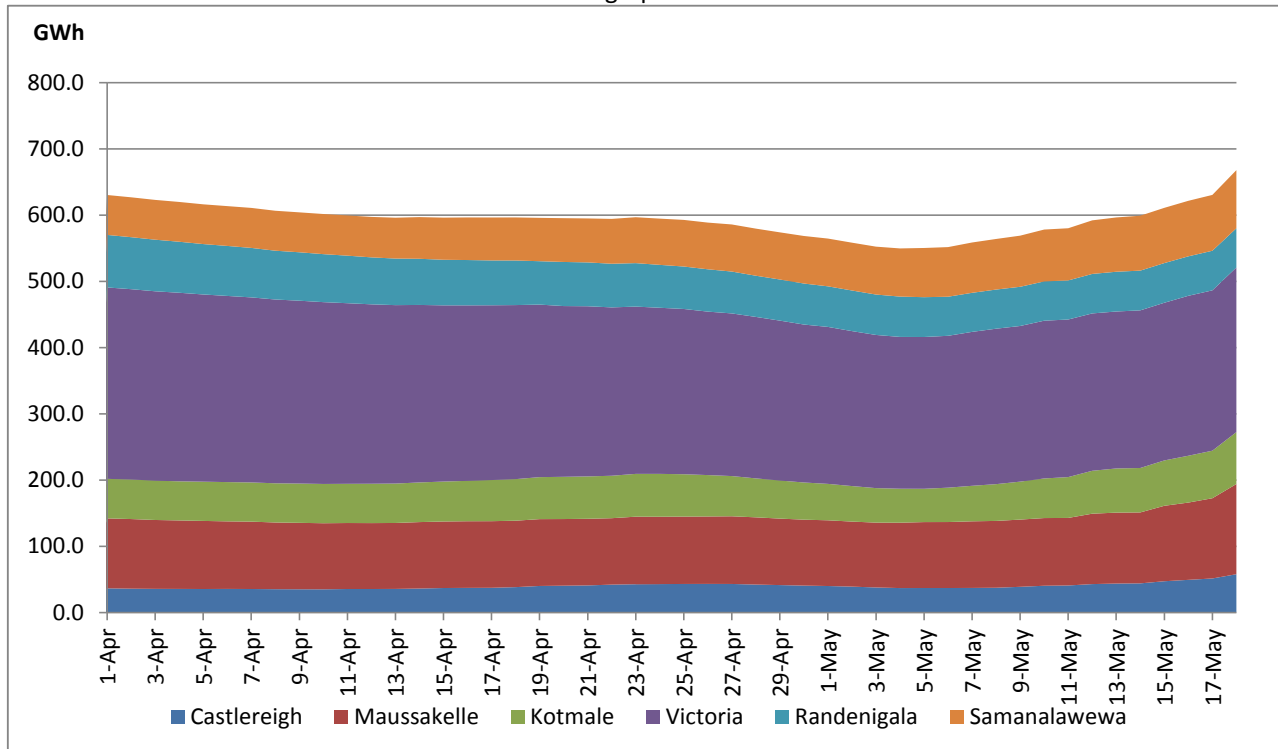
## Comparison of Total Reservoir Storage Levels with Past Years

Data from June 2018 to March 2020 are not indicated in the graph



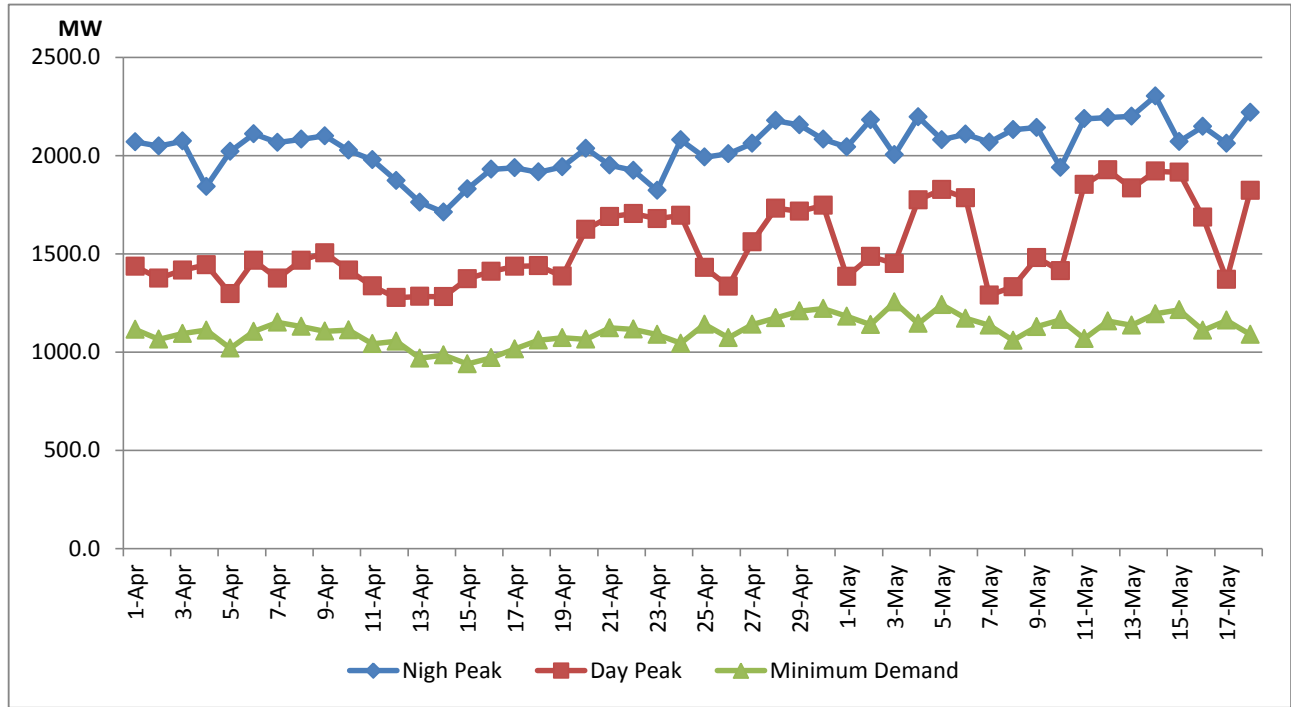
## Variation of Major Hydro Reservoir Levels in the current year (GWh)

Data from Jan 1-March 30 is not indicated in the graph

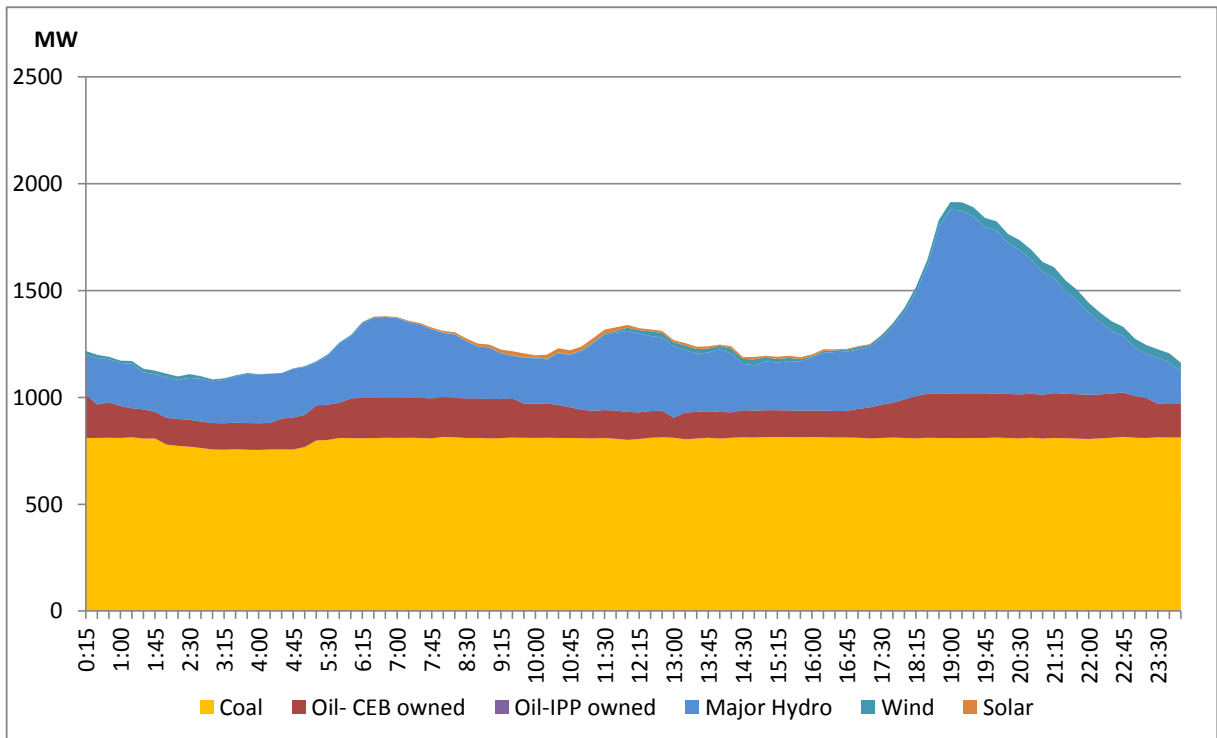


## Variation of Demand during the current year

Data from Jan 1-March 30 is not indicated in the graph



## Daily Load Curve - May 17, 2020



| Power Station                 | Capacity (MW) | Primary Fuel            |
|-------------------------------|---------------|-------------------------|
| <b>CEB Hydro</b>              |               |                         |
| Victoria                      | 210           |                         |
| Ukuwela                       | 40            |                         |
| Kotmale                       | 201           |                         |
| Randenigala                   | 122           |                         |
| Rantambe                      | 49            |                         |
| Bowatenna                     | 40            |                         |
| Nilambe                       | 3.2           |                         |
| Upper Kotmale                 | 150           |                         |
| Old Laxapana                  | 50            |                         |
| New Laxapana                  | 115           |                         |
| Polpitiya                     | 75            |                         |
| Wimalasurendra                | 50            |                         |
| Canyon                        | 60            |                         |
| Samanalawewa                  | 120           |                         |
| Kukuleganga                   | 75            |                         |
| Inginiyagala                  | 10            |                         |
| Udawalawe                     | 6             |                         |
|                               |               |                         |
| <b>CEB Thermal</b>            |               |                         |
| Sapugaskanda 1                | 72            | Heavy Fuel              |
| Sapugaskanda 2                | 72            | Heavy Fuel              |
| Kelanitissa Small Gas Turb    | 68            | Auto Diesel             |
| GT 7 - Kelanitissa            | 115           | Auto Diesel             |
| Kelanitissa CCY               | 165           | Naptha & Diesel         |
| Lakvijaya (Puttalam Coal)     | 275           | Coal                    |
| Lakvijaya (Puttalam Coal)     | 275           | Coal                    |
| Lakvijaya (Puttalam Coal)     | 275           | Coal                    |
| Uthuru Janani                 | 24            | Heavy Fuel              |
| Barge CEB                     | 60            | Furnace Oil             |
|                               |               |                         |
| <b>Private Thermal (IPPs)</b> |               |                         |
| Asia Power                    | 51            | Heavy Fuel              |
| Sojitz - Kelanitissa          | 163           | Auto Diesel             |
| West Coast                    | 270           | Low Sulphur Furnace oil |
| Northern Power                | 27            | Auto Diesel             |
| ACE Embilipitiya              | 100           | Furnace Oil             |