

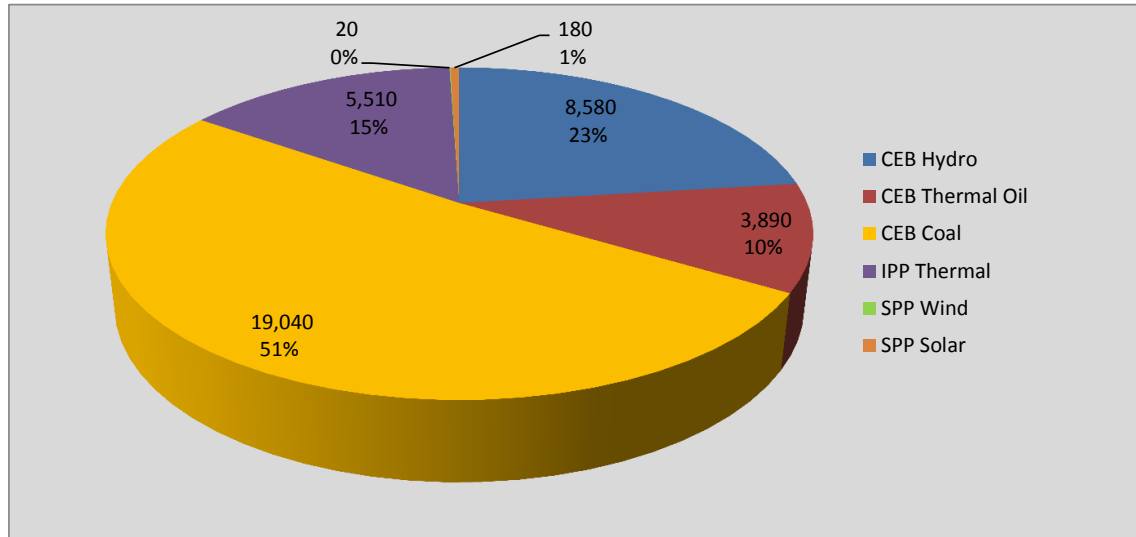
Generation and Reservoirs Statistics

May 13, 2020



PUBLIC UTILITIES COMMISSION OF SRI LANKA

Daily Generation Mix in MWh

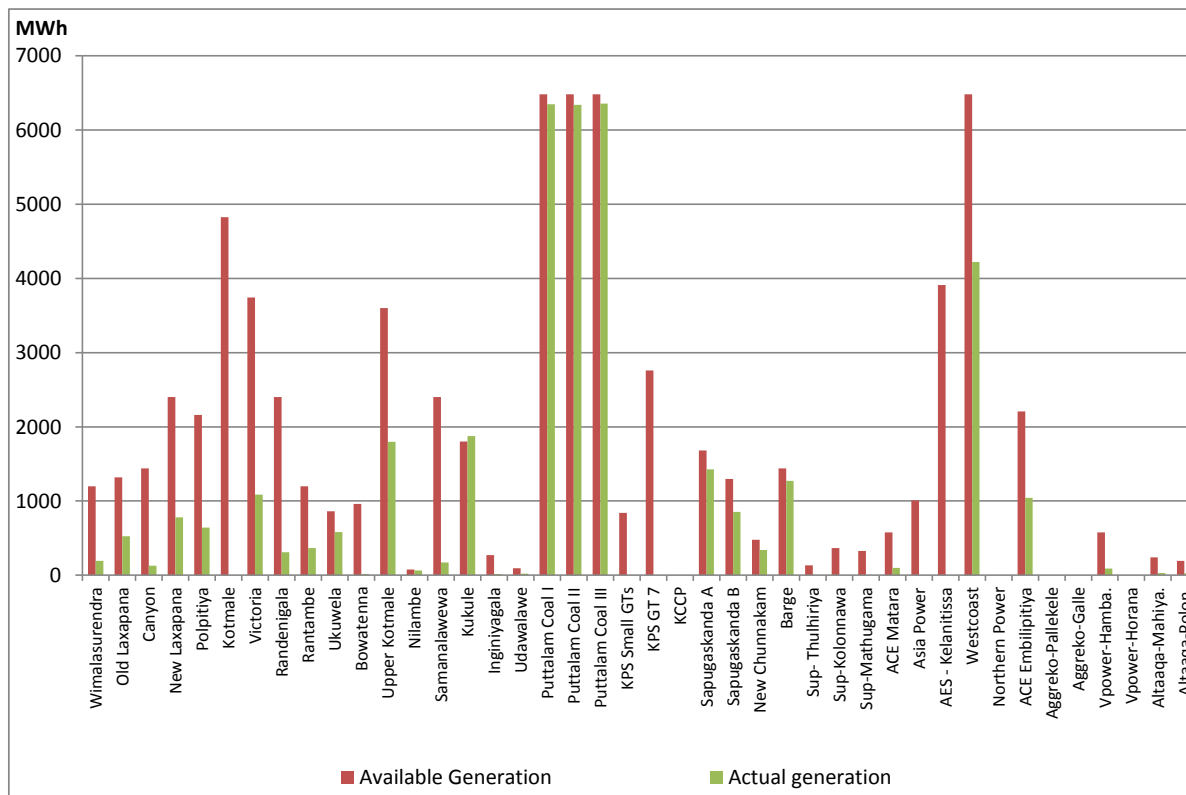


Total Generation

37,220 MWh

Note: Generation from other SPPs (Mini Hydro, small scale Solar and Biomass) is not included

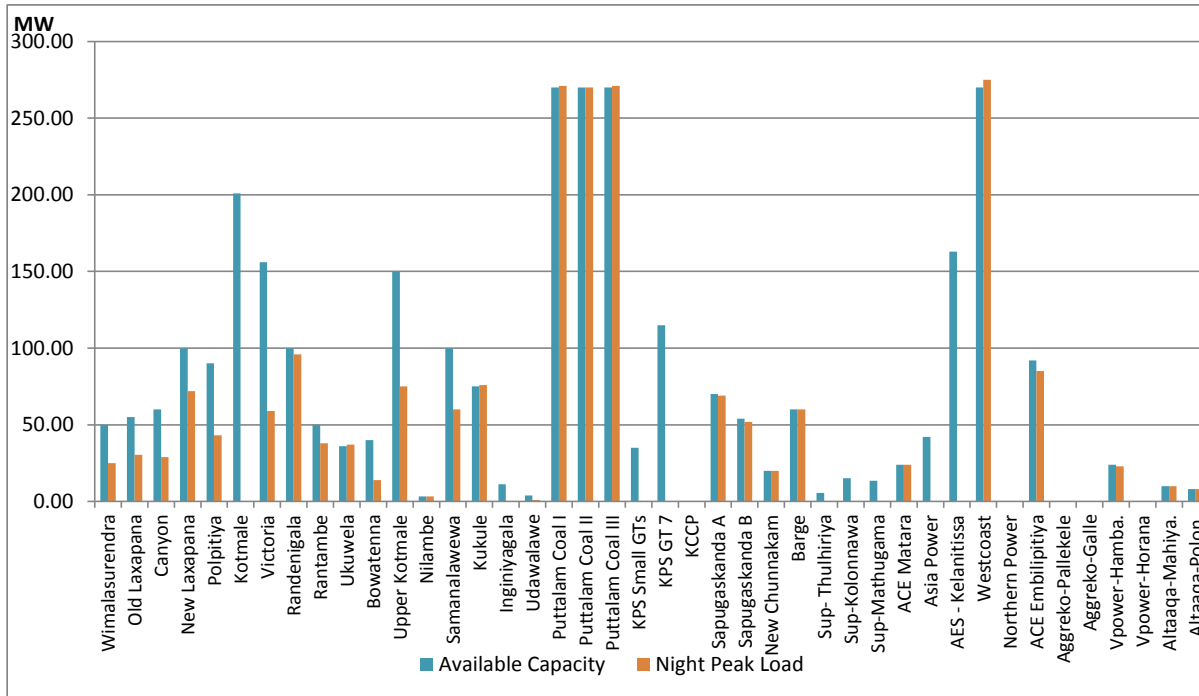
Plant Dispatch on May 13, 2020



Note- Available Generation is estimated based on plant availability at 6.00am on

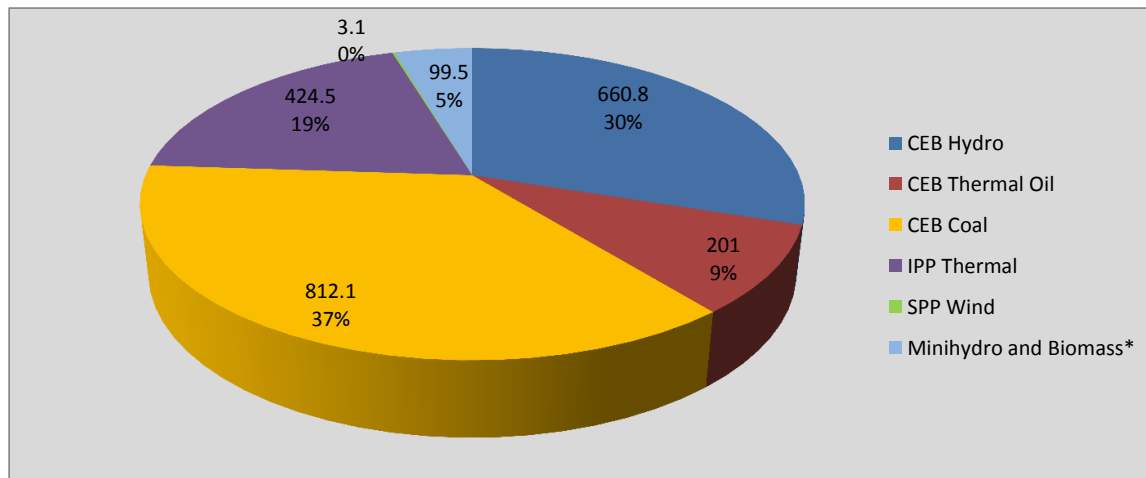
May 14, 2020

Plant Loading at Night Peak on May 13, 2020



Note- Plant availability is recorded at 6.00 am on May 14, 2020

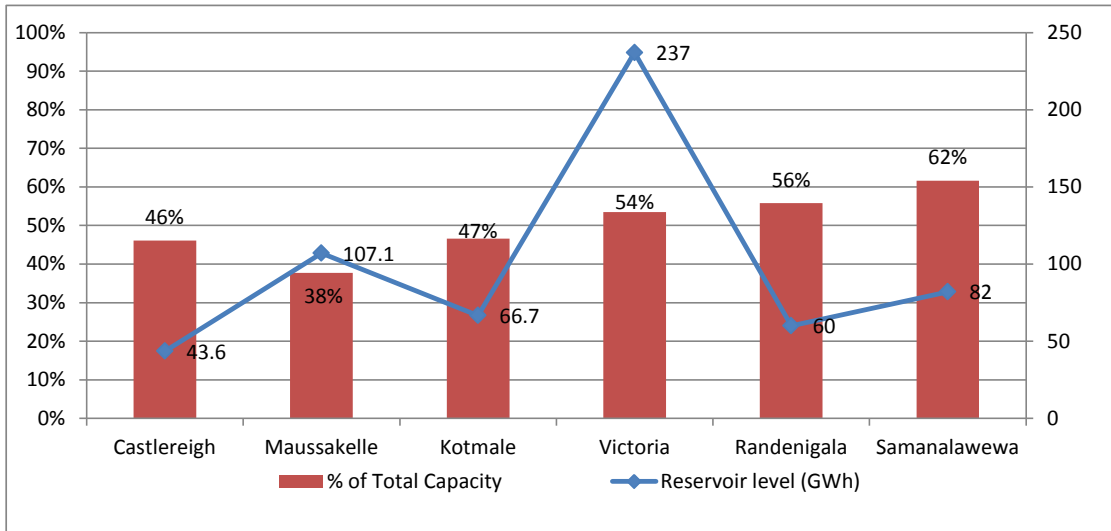
Contribution to the Night Peak in MW



| | |
|----------------|------------|
| Night Peak* | 2,201.0 MW |
| Day Peak | 1,834.7 MW |
| Minimum Demand | 1,136.5 MW |

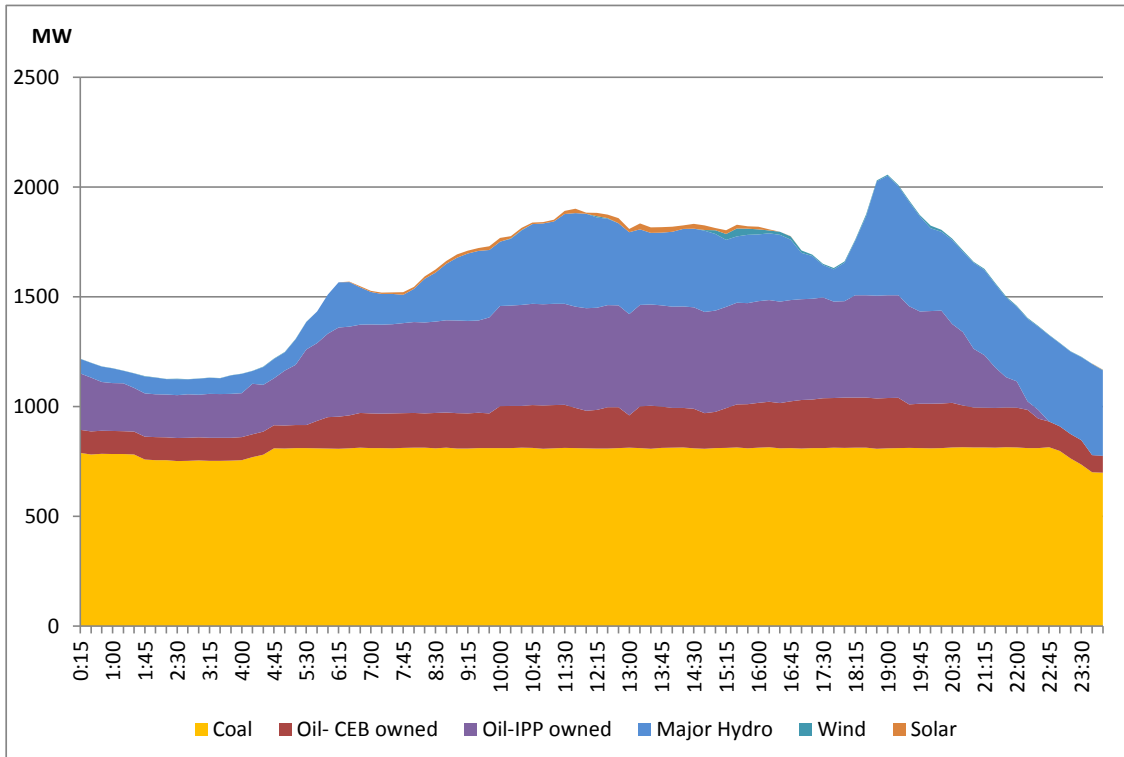
* includes Moragahakanda plant and MiniHydro and Biomass plants of 205.00 MW Capacity

Reservoir Levels - as at 06.00 Hr on May 14, 2020



Total Reservoir Level(GWh) 596.4
 % of Total capacity 50.0%

Daily Load Curve - May 12, 2020



| Power Station | Capacity (MW) | Primary Fuel |
|-------------------------------|---------------|-------------------------|
| CEB Hydro | | |
| Victoria | 210 | |
| Ukuwela | 40 | |
| Kotmale | 201 | |
| Randenigala | 122 | |
| Rantambe | 49 | |
| Bowatenna | 40 | |
| Nilambe | 3.2 | |
| Upper Kotmale | 150 | |
| Old Laxapana | 50 | |
| New Laxapana | 115 | |
| Polpitiya | 75 | |
| Wimalasurendra | 50 | |
| Canyon | 60 | |
| Samanalawewa | 120 | |
| Kukuleganga | 75 | |
| Inginiyagala | 10 | |
| Udawalawe | 6 | |
| | | |
| CEB Thermal | | |
| Sapugaskanda 1 | 72 | Heavy Fuel |
| Sapugaskanda 2 | 72 | Heavy Fuel |
| Kelanitissa Small Gas Turb | 68 | Auto Diesel |
| GT 7 - Kelanitissa | 115 | Auto Diesel |
| Kelanitissa CCY | 165 | Naptha & Diesel |
| Lakvijaya (Puttalam Coal) | 275 | Coal |
| Lakvijaya (Puttalam Coal) | 275 | Coal |
| Lakvijaya (Puttalam Coal) | 275 | Coal |
| Uthuru Janani | 24 | Heavy Fuel |
| Barge CEB | 60 | Furnace Oil |
| | | |
| Private Thermal (IPPs) | | |
| Asia Power | 51 | Heavy Fuel |
| Sojitz - Kelanitissa | 163 | Auto Diesel |
| West Coast | 270 | Low Sulphur Furnace oil |
| Northern Power | 27 | Auto Diesel |
| ACE Embilipitiya | 100 | Furnace Oil |