

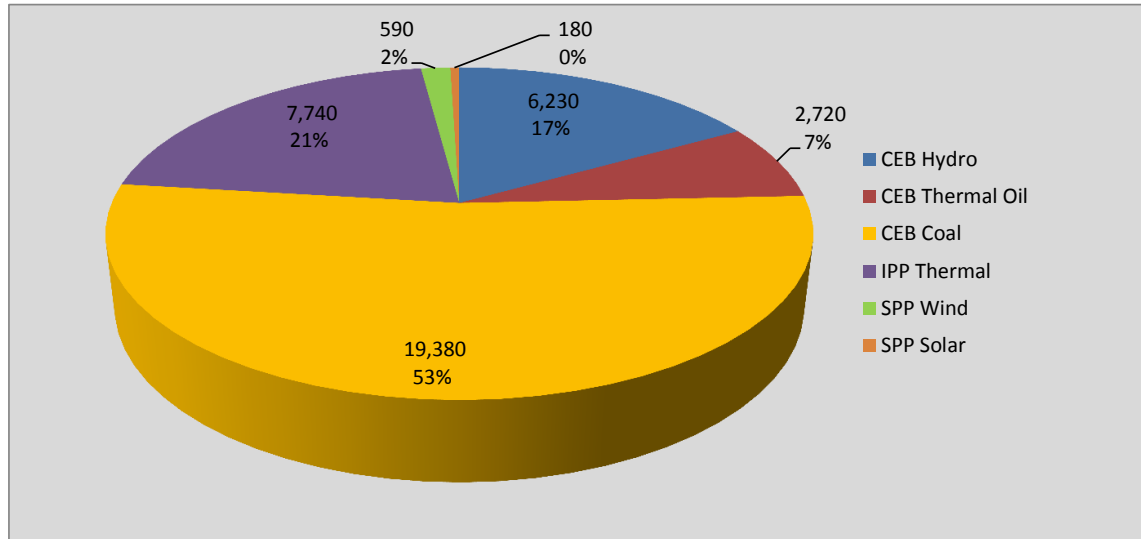
Generation and Reservoirs Statistics

May 6, 2020



PUBLIC UTILITIES COMMISSION OF SRI LANKA

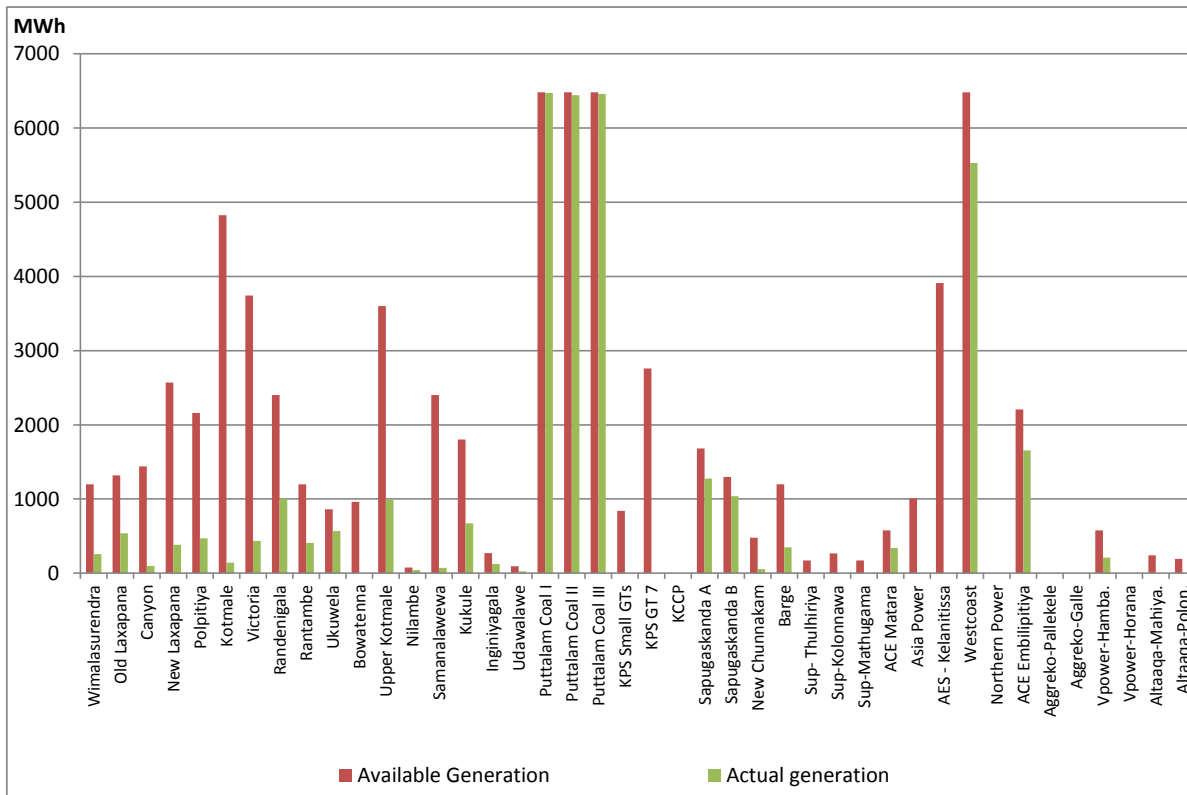
Daily Generation Mix in MWh



Total Generation 36,840 MWh

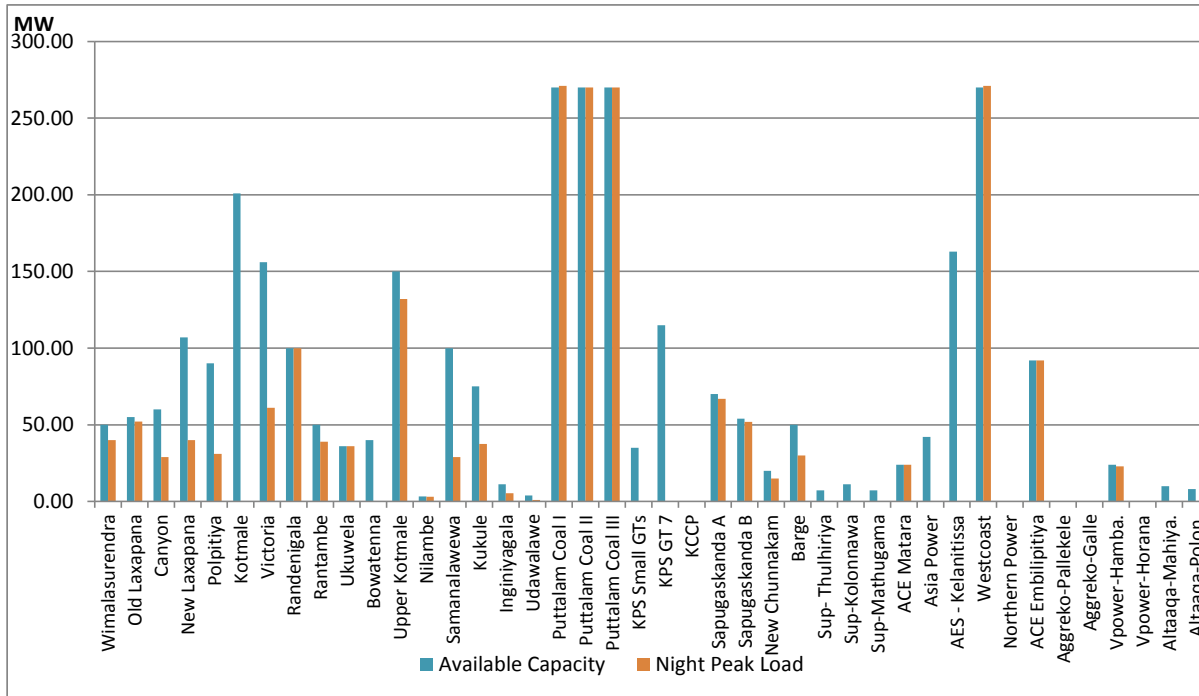
Note: Generation from other SPPs (Mini Hydro, small scale Solar and Biomass) is not included

Plant Dispatch on May 6, 2020



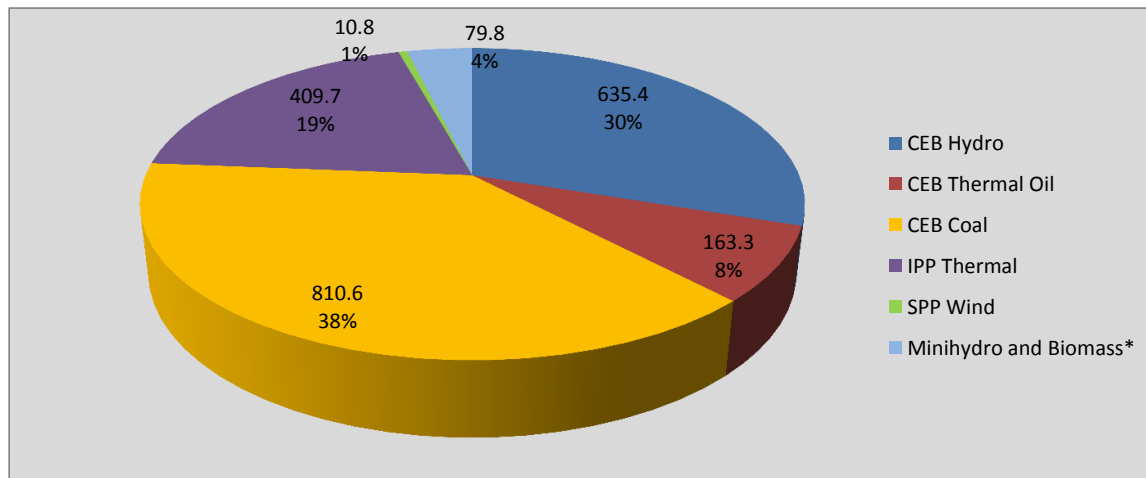
Note- Available Generation is estimated based on plant availability at 6.00am on May 7, 2020

Plant Loading at Night Peak on May 6, 2020



Note- Plant availability is recorded at 6.00 am on May 7, 2020

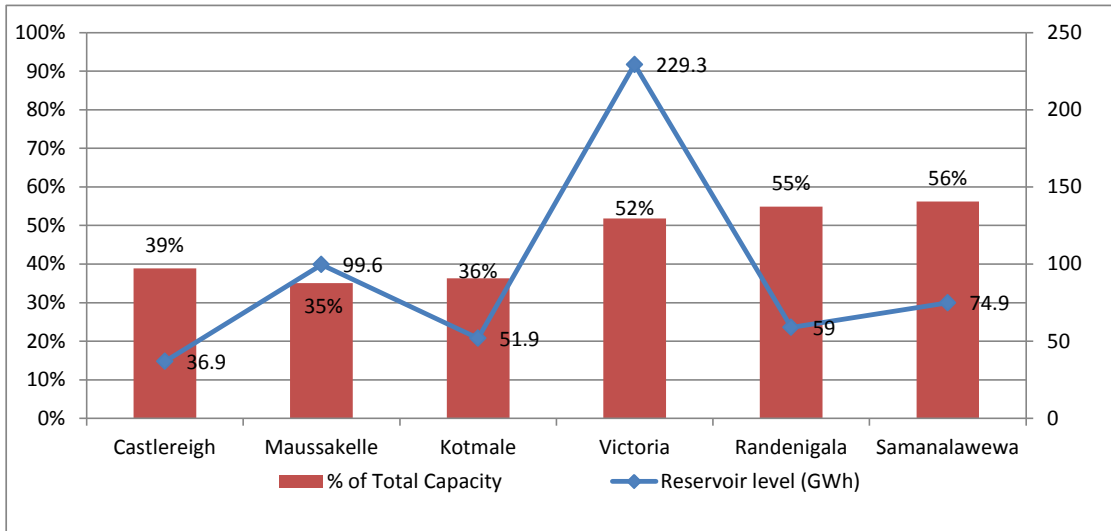
Contribution to the Night Peak in MW



Night Peak*	2,109.8 MW
Day Peak	1,784.6 MW
Minimum Demand	1,172.2 MW

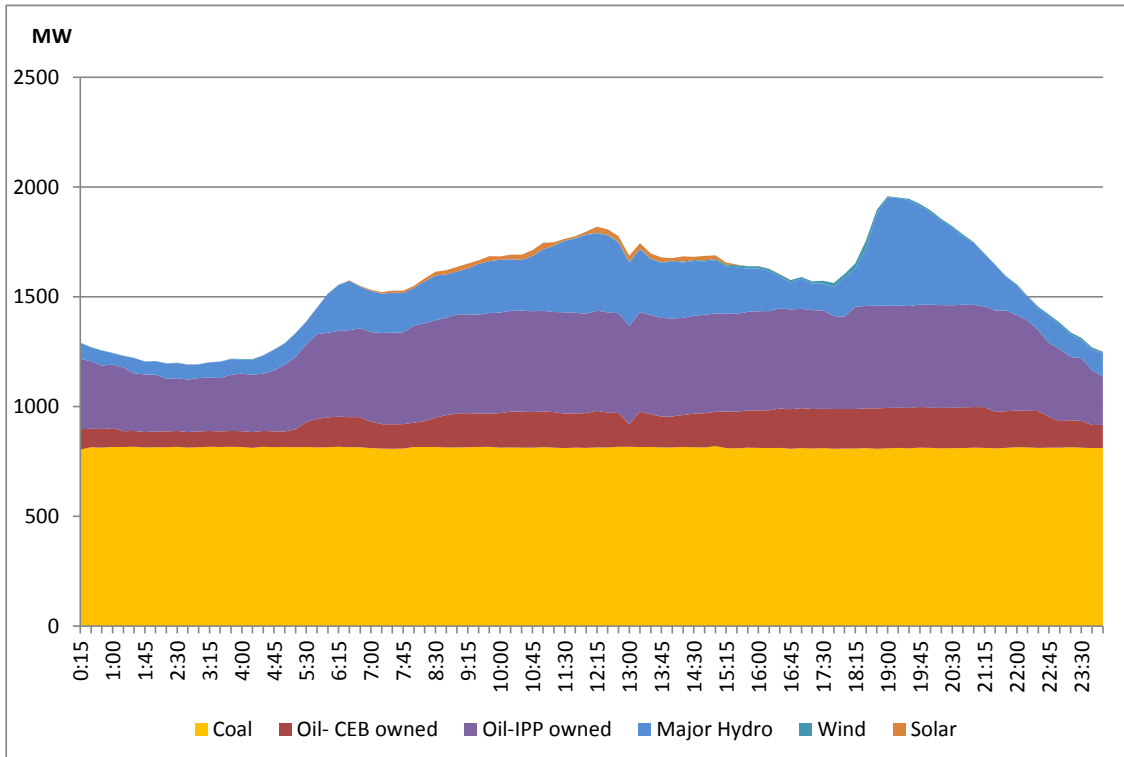
* includes Moragahakanda plant and MiniHydro and Biomass plants of 220.00 MW Capacity

Reservoir Levels - as at 06.00 Hr on May 7, 2020



Total Reservoir Level(GWh) 551.7
 % of Total capacity 46.2%

Daily Load Curve - May 5, 2020



Power Station	Capacity (MW)	Primary Fuel
CEB Hydro		
Victoria	210	
Ukuwela	40	
Kotmale	201	
Randenigala	122	
Rantambe	49	
Bowatenna	40	
Nilambe	3.2	
Upper Kotmale	150	
Old Laxapana	50	
New Laxapana	115	
Polpitiya	75	
Wimalasurendra	50	
Canyon	60	
Samanalawewa	120	
Kukuleganga	75	
Inginiyagala	10	
Udawalawe	6	
CEB Thermal		
Sapugaskanda 1	72	Heavy Fuel
Sapugaskanda 2	72	Heavy Fuel
Kelanitissa Small Gas Turb	68	Auto Diesel
GT 7 - Kelanitissa	115	Auto Diesel
Kelanitissa CCY	165	Naptha & Diesel
Lakvijaya (Puttalam Coal)	275	Coal
Lakvijaya (Puttalam Coal)	275	Coal
Lakvijaya (Puttalam Coal)	275	Coal
Uthuru Janani	24	Heavy Fuel
Barge CEB	60	Furnace Oil
Private Thermal (IPPs)		
Asia Power	51	Heavy Fuel
Sojitz - Kelanitissa	163	Auto Diesel
West Coast	270	Low Sulphur Furnace oil
Northern Power	27	Auto Diesel
ACE Embilipitiya	100	Furnace Oil