

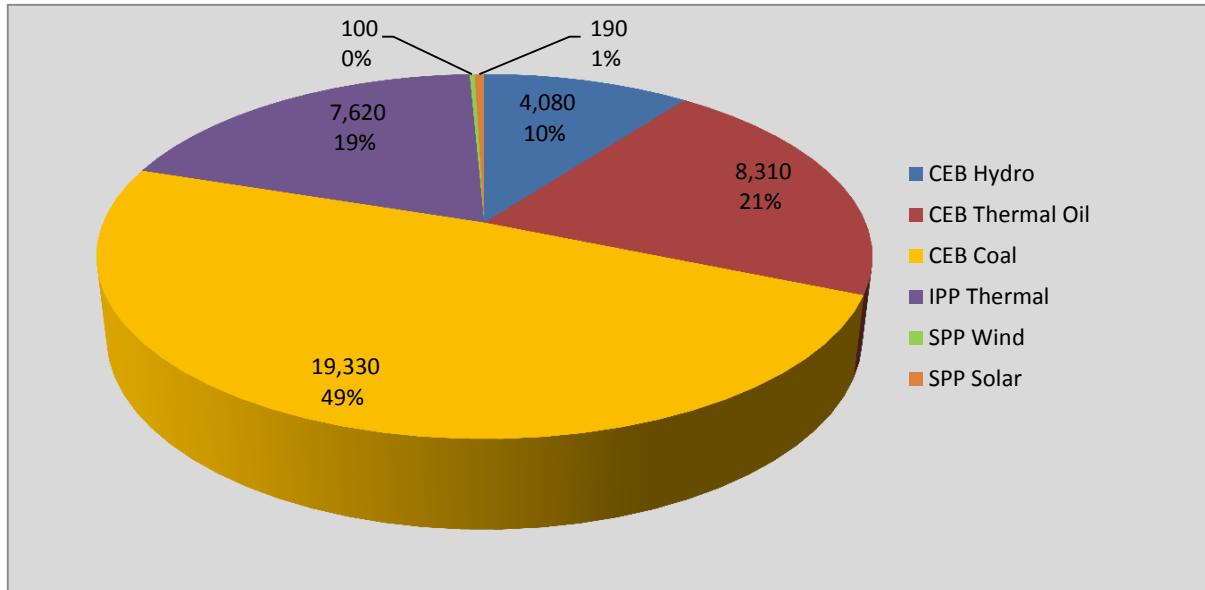
# **Generation and Reservoirs Statistics**

**April 1, 2017**



PUBLIC UTILITIES COMMISSION OF SRI LANKA

## Daily Generation Mix in MWh



**Total Generation 39,640 MWh**

Note: Generation from other SPPs (Mini Hydro, small scale Solar and Biomass) is not included

## Cumulative Dispatch

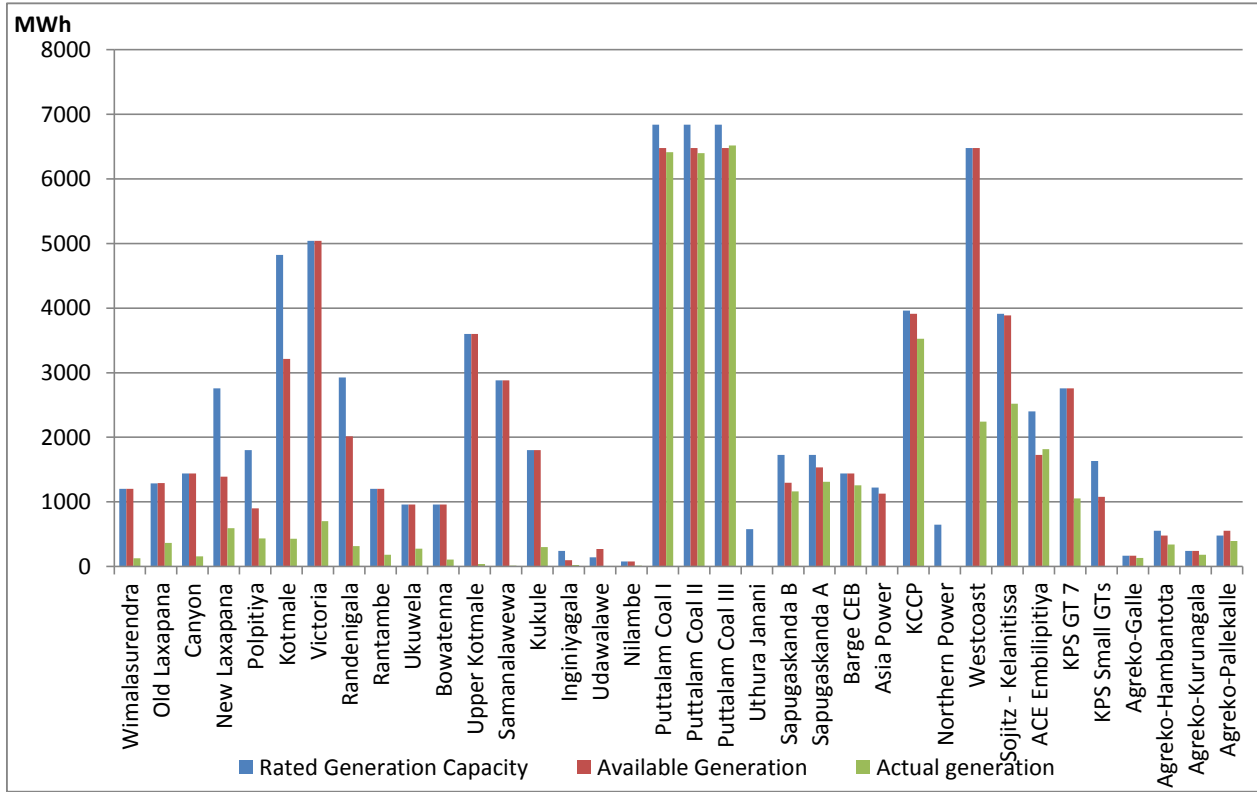
### For Current Month

Category	Dispatch (MWh)	Percentage
CEB Hydro	4,080.0	10.30%
CEB Thermal Oil	8,310.0	20.97%
CEB Coal	19,330.0	48.78%
IPP Thermal	7,620.0	19.23%
SPP Wind& Solar	290.0	0.73%
<b>Total</b>	<b>39,630.0</b>	

### For Current Year

Category	Dispatch (GWh)	Percentage
CEB Hydro	354	10.23%
CEB Thermal Oil	628	18.13%
CEB Coal	1,623	46.90%
IPP Thermal	771	22.27%
Renewable	86	2.47%
<b>Total</b>	<b>3,462</b>	

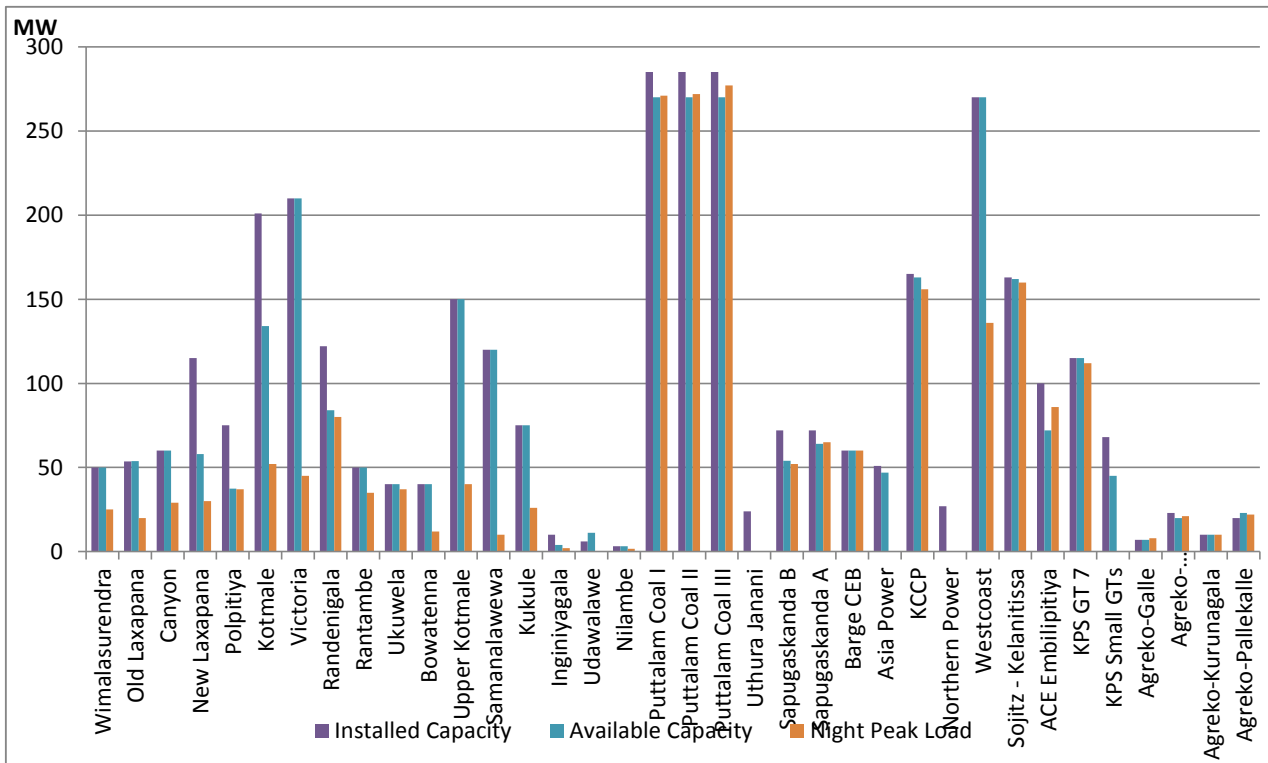
## Plant Dispatch on April 1, 2017



Note- Available Generation is estimated based on plant availability at 6.00am on

April 2, 2017

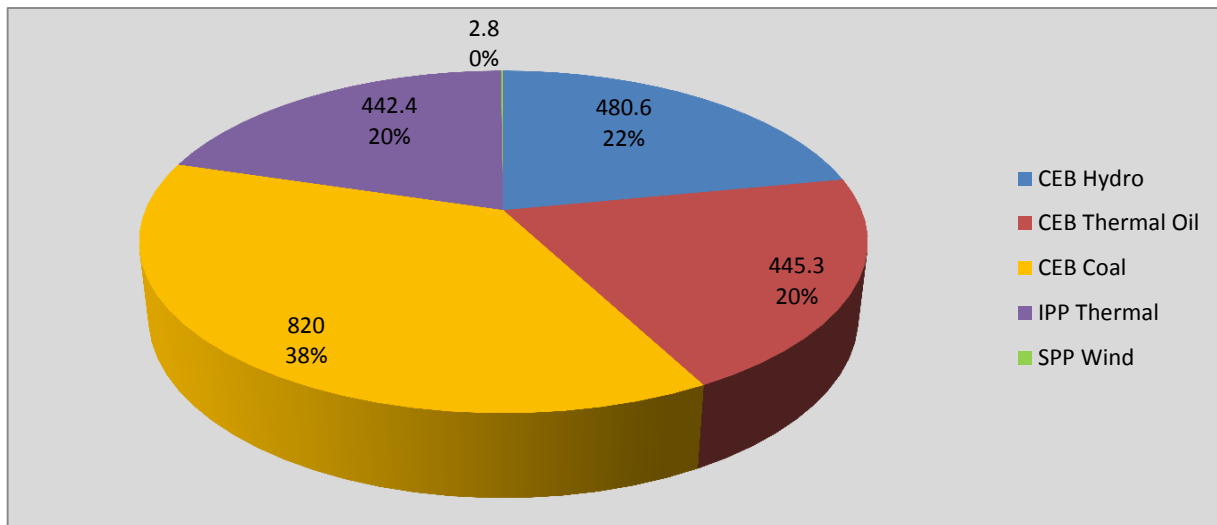
## Plant Loading at Night Peak on April 1, 2017



Note- Plant availability is recorded at 6.00 am on

April 2, 2017

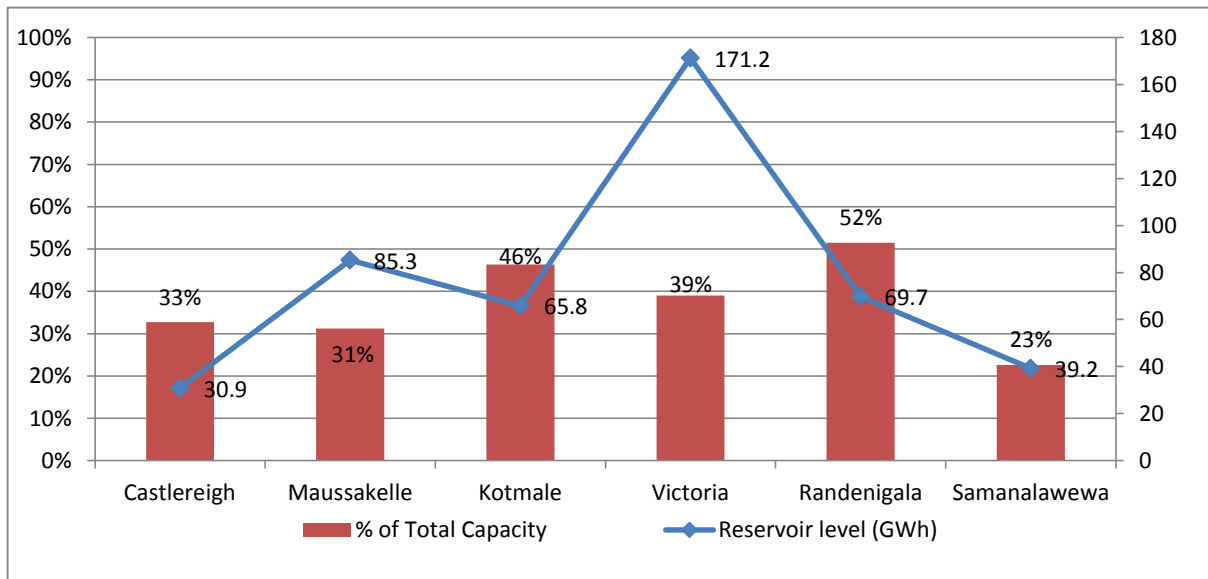
## Contribution to the Night Peak in MW



Night Peak	2,191.1 MW
Day Peak	1,968.6 MW
Minimum Demand	1,176.9 MW

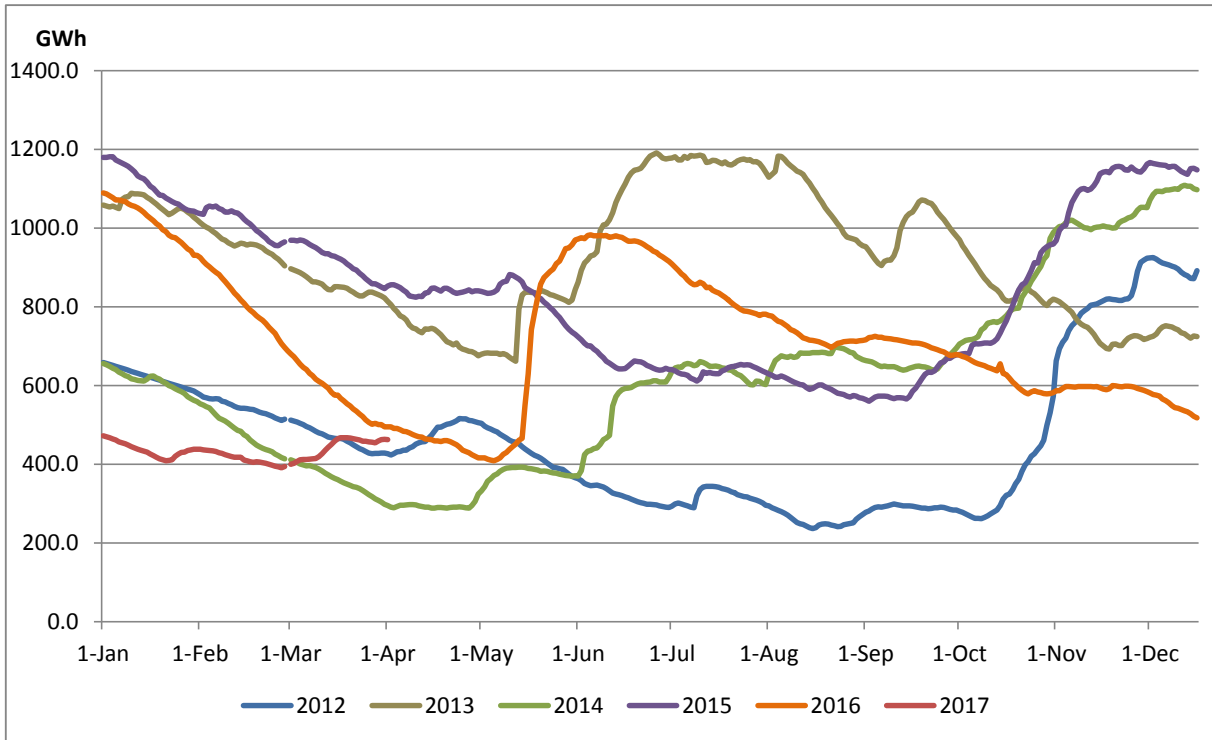
**Note:** Contribution from other SPPs (Mini Hydro, Solar and Biomass) is not included

## Reservoir Levels - as at 06.00 Hr on April 2, 2017

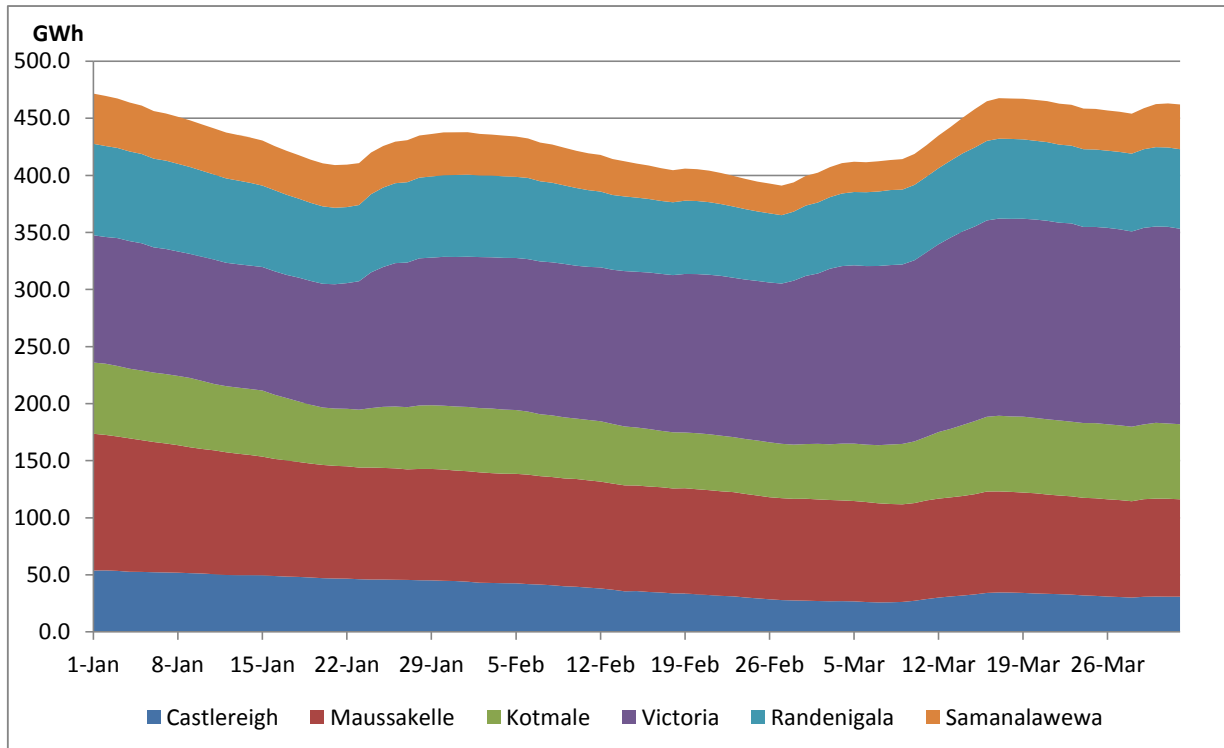


Total Reservoir Level(GWh)	462.1
% of Total capacity	0.37

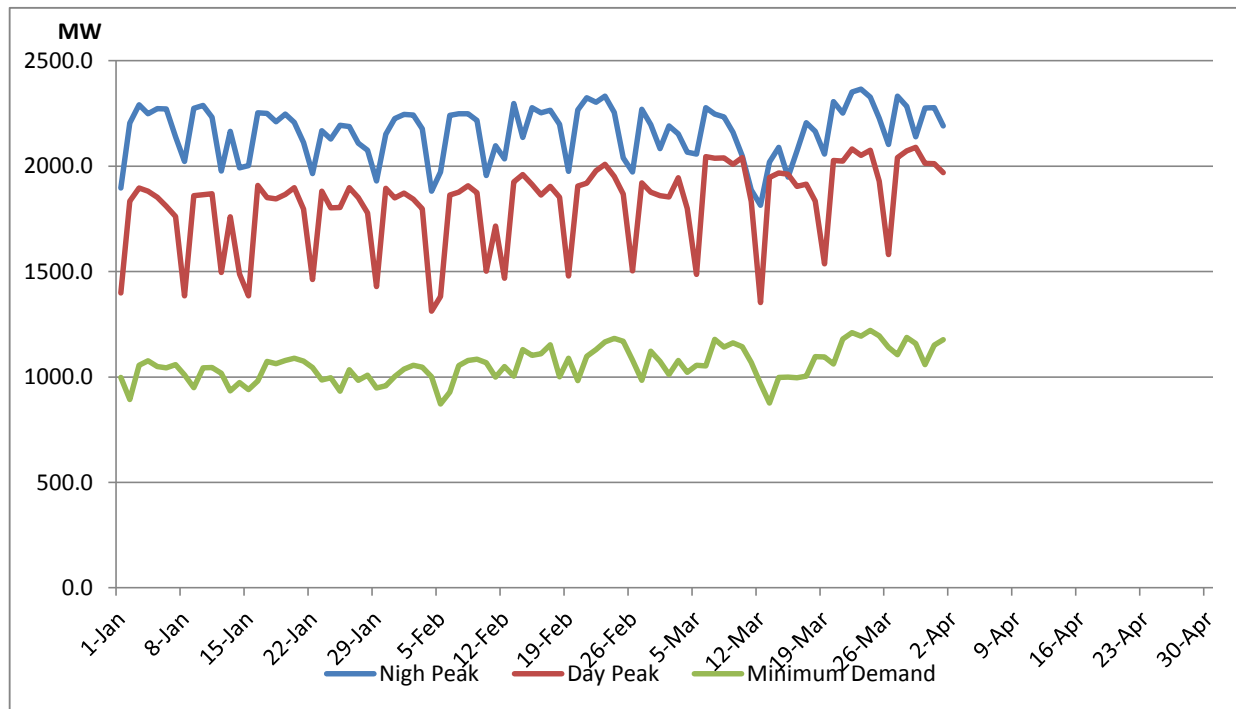
### Comparison of Total Reservoir Storage Levels with Past Years



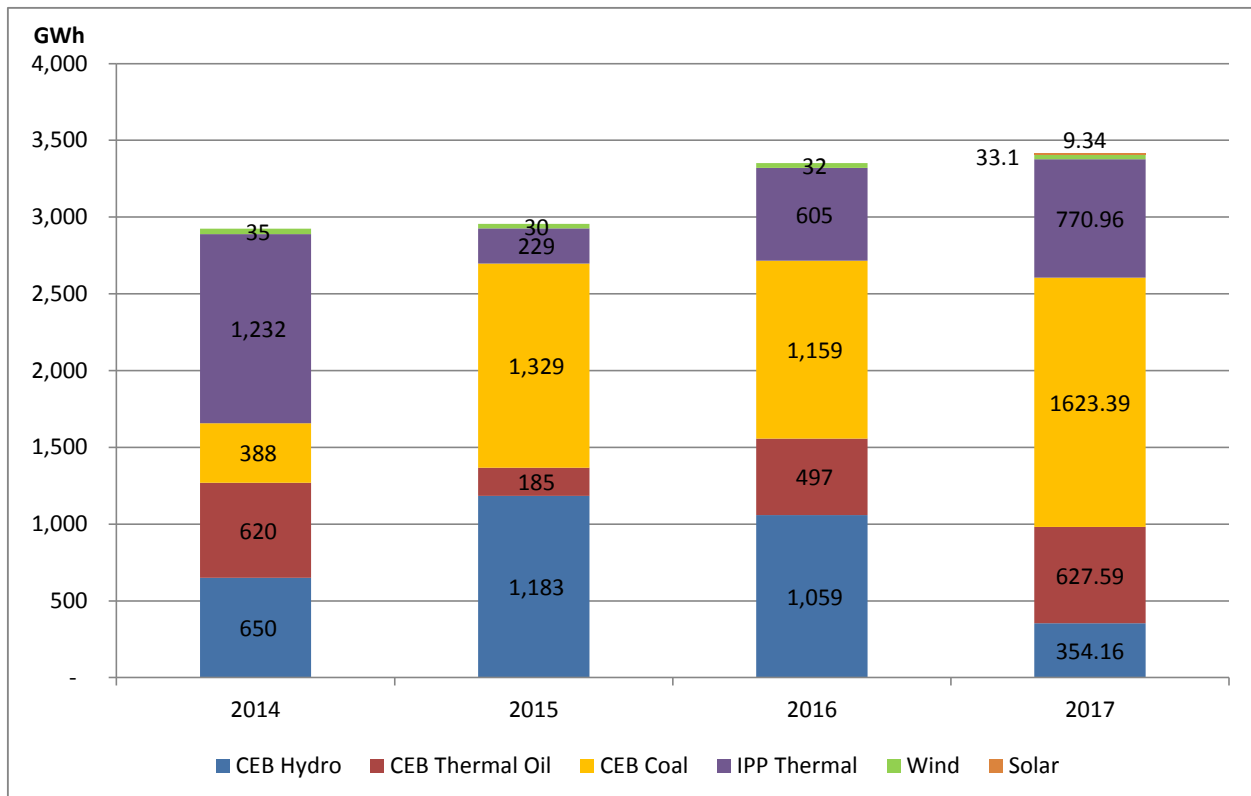
### Variation of Major Hydro Reservoir Levels in GWh- 2017



## Variation of Demand 2017



## Comparison of Cumulative Dispatch



## Daily Load Curve - March 31, 2017

<b>Power Station</b>	<b>Capacity (MW)</b>	<b>Primary Fuel</b>
<b>CEB Hydro</b>		
Victoria	210	
Ukuwela	40	
Kotmale	201	
Randenigala	122	
Rantambe	49	
Bowatenna	40	
Nilambe	3.2	
Upper Kotmale	150	
Old Laxapana	50	
New Laxapana	115	
Polpitiya	75	
Wimalasurendra	50	
Canyon	60	
Samanalawewa	120	
Kukuleganga	75	
Inginiyagala	10	
Udawalawe	6	
<b>CEB Thermal</b>		
Sapugaskanda 1	72	Heavy Fuel
Sapugaskanda 2	72	Heavy Fuel
Kelanitissa Small Gas Turb	68	Auto Diesel
GT 7 - Kelanitissa	115	Auto Diesel
Kelanitissa CCY	165	Naptha & Diesel
Lakvijaya (Puttalam Coal)	285	Coal
Lakvijaya (Puttalam Coal)	285	Coal
Lakvijaya (Puttalam Coal)	285	Coal
Uthuru Janani	24	Heavy Fuel
Barge CEB	60	Furnace Oil
<b>Private Thermal (IPPs)</b>		
Asia Power	51	Heavy Fuel
Sojitz - Kelanitissa	163	Auto Diesel
West Coast	270	Low Sulphur Furnace oil
Northern Power	27	Auto Diesel
ACE Embilipitiya	100	Furnace Oil